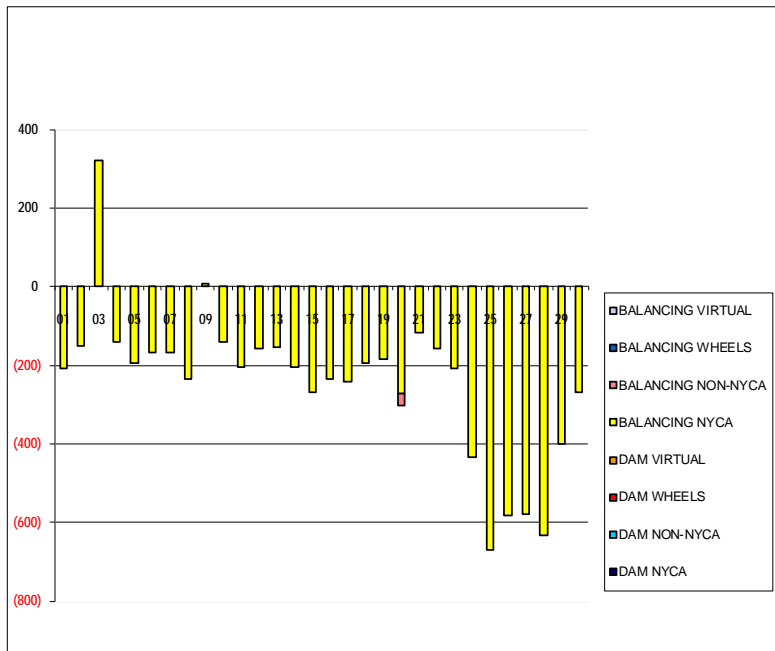


SETTLEMENTS REPORT
 June 2021 Settlement Adjustment
 November 5, 2021

Settlement Adjustment – Market Supply Delta Analysis

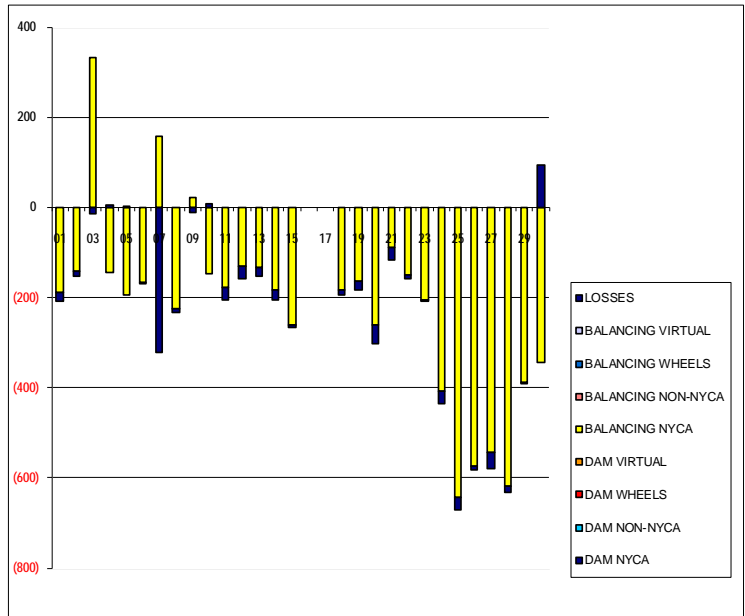
	MONDAY	TUESDAY	WEDNESDAY	THURSDAY	FRIDAY	SATURDAY	SUNDAY
		1	2	3	4	5	6
DAM NYCA		0	0	0	0	0	0
DAM NON-NYCA		0	0	0	0	0	0
DAM WHEELS		0	0	0	0	0	0
DAM VIRTUAL		0	0	0	0	0	0
BALANCING NYCA		(209)	(152)	319	(140)	(194)	(170)
BALANCING NON-NYCA		0	0	0	0	0	0
BALANCING WHEELS		0	0	0	0	0	0
BALANCING VIRTUAL		0	0	0	0	0	0
	7	8	9	10	11	12	13
DAM NYCA	0	0	0	0	0	0	0
DAM NON-NYCA	0	0	0	0	0	0	0
DAM WHEELS	0	0	0	0	0	0	0
DAM VIRTUAL	0	0	0	0	0	0	0
BALANCING NYCA	(166)	(234)	9	(142)	(207)	(159)	(153)
BALANCING NON-NYCA	0	0	0	0	0	0	0
BALANCING WHEELS	0	0	0	0	0	0	0
BALANCING VIRTUAL	0	0	0	0	0	0	0
	14	15	16	17	18	19	20
DAM NYCA	0	0	0	0	0	0	0
DAM NON-NYCA	0	0	0	0	0	0	0
DAM WHEELS	0	0	0	0	0	0	0
DAM VIRTUAL	0	0	0	0	0	0	0
BALANCING NYCA	(205)	(268)	(237)	(242)	(195)	(184)	(272)
BALANCING NON-NYCA	0	0	0	0	0	0	(30)
BALANCING WHEELS	0	0	0	0	0	0	0
BALANCING VIRTUAL	0	0	0	0	0	0	0
	21	22	23	24	25	26	27
DAM NYCA	0	0	0	0	0	0	0
DAM NON-NYCA	0	0	0	0	0	0	0
DAM WHEELS	0	0	0	0	0	0	0
DAM VIRTUAL	0	0	0	0	0	0	0
BALANCING NYCA	(116)	(159)	(209)	(435)	(671)	(583)	(578)
BALANCING NON-NYCA	0	0	0	0	0	0	0
BALANCING WHEELS	0	0	0	0	0	0	0
BALANCING VIRTUAL	0	0	0	0	0	0	0
	28	29	30				
DAM NYCA	0	0	0				
DAM NON-NYCA	0	0	0				
DAM WHEELS	0	0	0				
DAM VIRTUAL	0	0	0				
BALANCING NYCA	(633)	(399)	(269)				
BALANCING NON-NYCA	0	0	0				
BALANCING WHEELS	0	0	0				
BALANCING VIRTUAL	0	0	0				



SETTLEMENTS REPORT
 June 2021 Settlement Adjustment
 November 5, 2021

Settlement Adjustment – Market Withdrawals Delta Analysis

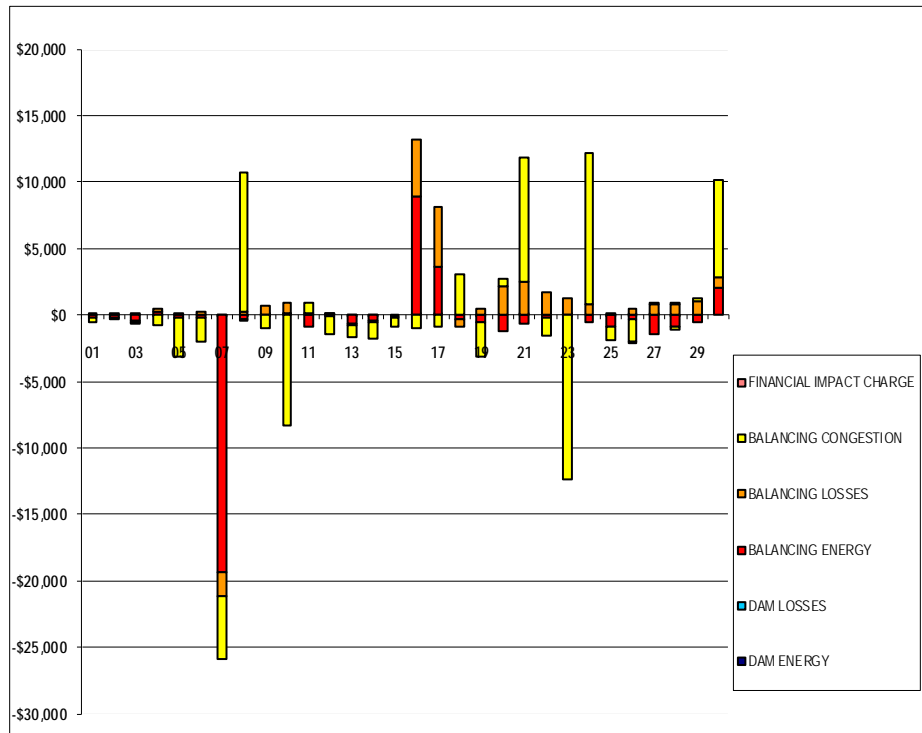
	MONDAY	TUESDAY	WEDNESDAY	THURSDAY	FRIDAY	SATURDAY	SUNDAY
		1	2	3	4	5	6
DAM NYCA		0	0	0	0	0	0
DAM NON-NYCA		0	0	0	0	0	0
DAM WHEELS		0	0	0	0	0	0
DAM VIRTUAL		0	0	0	0	0	0
BALANCING NYCA		(190)	(142)	333	(145)	(195)	(166)
BALANCING NON-NYCA		0	0	0	0	0	0
BALANCING WHEELS		0	0	0	0	0	0
BALANCING VIRTUAL		0	0	0	0	0	0
UFE/LOSSES		(19)	(10)	(13)	5	1	(3)
	7	8	9	10	11	12	13
DAM NYCA	0	0	0	0	0	0	0
DAM NON-NYCA	0	0	0	0	0	0	0
DAM WHEELS	0	0	0	0	0	0	0
DAM VIRTUAL	0	0	0	0	0	0	0
BALANCING NYCA	156	(224)	20	(148)	(177)	(130)	(132)
BALANCING NON-NYCA	0	0	0	0	0	0	0
BALANCING WHEELS	0	0	0	0	0	0	0
BALANCING VIRTUAL	0	0	0	0	0	0	0
UFE/LOSSES	(323)	(10)	(12)	7	(29)	(29)	(21)
	14	15	16	17	18	19	20
DAM NYCA	0	0	0	0	0	0	0
DAM NON-NYCA	0	0	0	0	0	0	0
DAM WHEELS	0	0	0	0	0	0	0
DAM VIRTUAL	0	0	0	0	0	0	0
BALANCING NYCA	(183)	(260)	0	0	(182)	(163)	(260)
BALANCING NON-NYCA	0	0	0	0	0	0	0
BALANCING WHEELS	0	0	0	0	0	0	0
BALANCING VIRTUAL	0	0	0	0	0	0	0
UFE/LOSSES	(22)	(8)	0	0	(12)	(20)	(42)
	21	22	23	24	25	26	27
DAM NYCA	0	0	0	0	0	0	0
DAM NON-NYCA	0	0	0	0	0	0	0
DAM WHEELS	0	0	0	0	0	0	0
DAM VIRTUAL	0	0	0	0	0	0	0
BALANCING NYCA	(89)	(151)	(206)	(407)	(643)	(574)	(544)
BALANCING NON-NYCA	0	0	0	0	0	0	0
BALANCING WHEELS	0	0	0	0	0	0	0
BALANCING VIRTUAL	0	0	0	0	0	0	0
UFE/LOSSES	(27)	(8)	(3)	(28)	(27)	(9)	(35)
	28	29	30				
DAM NYCA	0	0	0				
DAM NON-NYCA	0	0	0				
DAM WHEELS	0	0	0				
DAM VIRTUAL	0	0	0				
BALANCING NYCA	(618)	(390)	(344)				
BALANCING NON-NYCA	0	0	0				
BALANCING WHEELS	0	0	0				
BALANCING VIRTUAL	0	0	0				
UFE/LOSSES	(16)	(1)	95				



SETTLEMENTS REPORT
 June 2021 Settlement Adjustment
 November 5, 2021

Settlement Adjustment – Market Residuals Delta Analysis

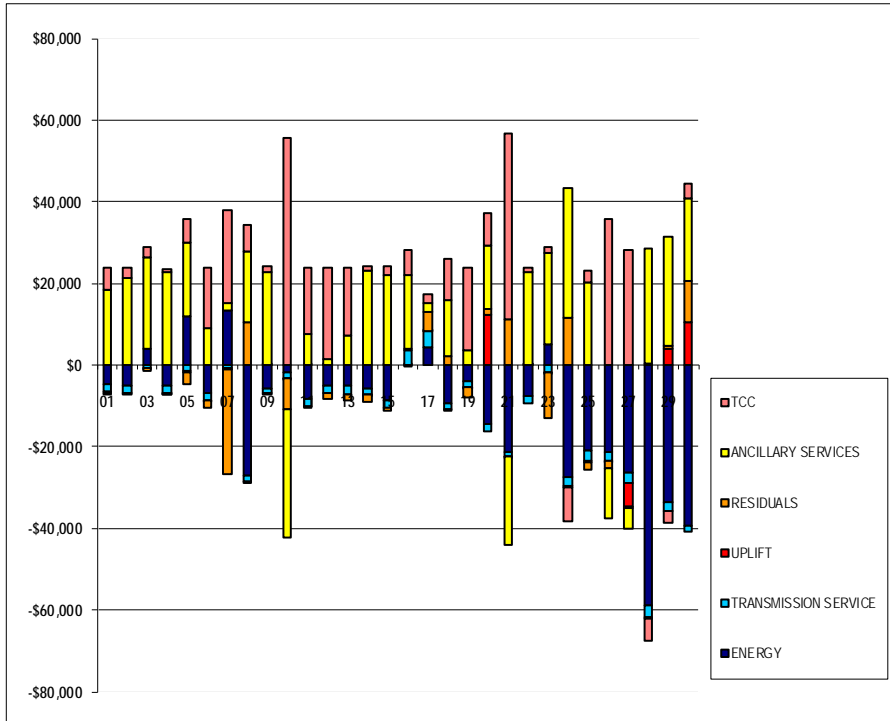
	MONDAY	TUESDAY	WEDNESDAY	THURSDAY	FRIDAY	SATURDAY	SUNDAY
		1	2	3	4	5	6
DAM ENERGY		\$0.00	\$0.00	\$0.01	\$0.00	\$0.00	\$0.00
DAM LOSSES		(\$0.01)	\$0.00	\$0.00	(\$0.01)	\$0.00	\$0.00
BALANCING ENERGY		(\$166.84)	(\$195.94)	(\$477.18)	\$253.35	(\$248.73)	(\$235.00)
BALANCING LOSSES		\$100.08	\$61.13	(\$129.53)	\$174.61	\$167.91	\$264.73
BALANCING CONGESTION		(\$332.15)	(\$110.32)	(\$112.52)	(\$790.82)	(\$2,906.79)	(\$1,751.12)
FINANCIAL IMPACT CHARGE		\$0.00	\$0.00	\$0.00	\$0.00	\$0.00	\$0.00
	7	8	9	10	11	12	13
DAM ENERGY	(\$0.01)	(\$0.01)	(\$0.01)	\$0.00	\$0.00	\$0.00	\$0.00
DAM LOSSES	\$0.00	(\$0.01)	(\$0.01)	\$0.01	\$0.00	\$0.01	(\$0.01)
BALANCING ENERGY	(\$19,403.96)	(\$281.45)	\$22.67	\$116.04	(\$863.08)	(\$146.84)	(\$622.81)
BALANCING LOSSES	(\$1,800.59)	\$236.73	\$616.20	\$800.38	\$165.97	\$21.12	(\$140.17)
BALANCING CONGESTION	(\$4,655.89)	\$10,499.22	(\$1,000.05)	(\$8,312.49)	\$771.30	(\$1,308.79)	(\$934.43)
FINANCIAL IMPACT CHARGE	\$0.00	(\$0.06)	\$0.00	\$0.00	\$0.00	\$0.00	\$0.00
	14	15	16	17	18	19	20
DAM ENERGY	(\$0.01)	\$0.00	\$0.01	\$0.01	\$0.00	\$0.00	\$0.00
DAM LOSSES	\$0.00	\$0.00	\$0.00	\$0.01	\$0.00	(\$0.01)	\$0.00
BALANCING ENERGY	(\$493.35)	(\$151.87)	\$8,957.00	\$3,645.00	(\$280.52)	(\$562.98)	(\$1,215.00)
BALANCING LOSSES	(\$72.71)	(\$14.65)	\$4,235.00	\$4,465.00	(\$595.08)	\$440.75	\$2,186.93
BALANCING CONGESTION	(\$1,171.54)	(\$709.94)	(\$1,055.39)	(\$840.09)	\$3,047.85	(\$2,599.92)	\$522.38
FINANCIAL IMPACT CHARGE	\$0.00	\$0.00	\$0.00	\$0.00	\$0.00	\$0.00	\$0.00
	21	22	23	24	25	26	27
DAM ENERGY	\$0.00	\$0.00	\$0.00	\$0.00	(\$0.01)	\$0.01	\$0.01
DAM LOSSES	\$0.01	\$0.00	\$0.01	\$0.00	\$0.00	(\$0.01)	\$0.00
BALANCING ENERGY	(\$662.74)	(\$230.20)	(\$43.21)	(\$585.21)	(\$908.30)	(\$316.25)	(\$1,503.94)
BALANCING LOSSES	\$2,444.14	\$1,712.03	\$1,234.77	\$771.44	\$123.59	\$430.33	\$825.62
BALANCING CONGESTION	\$9,349.72	(\$1,366.00)	(\$12,330.35)	\$11,409.00	(\$973.28)	(\$1,696.93)	\$133.74
FINANCIAL IMPACT CHARGE	\$0.00	\$0.00	\$0.00	\$0.00	\$0.00	(\$0.01)	\$0.00
	28	29	30				
DAM ENERGY	(\$0.01)	\$0.00	\$0.00				
DAM LOSSES	\$0.00	\$0.00	\$0.00				
BALANCING ENERGY	(\$885.11)	(\$559.32)	\$2,089.56				
BALANCING LOSSES	\$834.77	\$985.23	\$741.50				
BALANCING CONGESTION	(\$196.96)	\$308.27	\$7,371.61				
FINANCIAL IMPACT CHARGE	\$0.01	\$0.00	\$0.00				



SETTLEMENTS REPORT
 June 2021 Settlement Adjustment
 November 5, 2021

Settlement Adjustment – Market Costs Delta Analysis

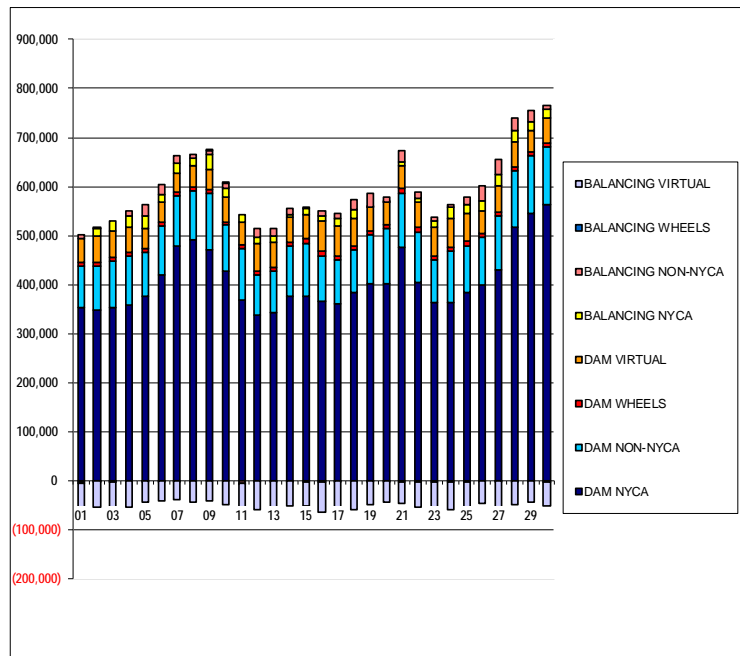
	MONDAY	TUESDAY	WEDNESDAY	THURSDAY	FRIDAY	SATURDAY	SUNDAY
		1	2	3	4	5	6
ENERGY		(\$4,850.07)	(\$5,061.69)	\$4,053.56	(\$5,088.60)	\$12,000.00	(\$6,987.06)
TRANSMISSION SERVICE		(\$1,814.13)	(\$1,880.38)	(\$551.08)	(\$1,665.06)	(\$1,505.31)	(\$1,692.31)
UPLIFT		(\$39.27)	\$0.03	(\$0.06)	(\$3.21)	(\$143.49)	(\$81.85)
RESIDUALS		(\$398.92)	(\$245.13)	(\$719.22)	(\$362.87)	(\$2,987.61)	(\$1,721.39)
ANCILLARY SERVICES		\$18,379.24	\$21,393.74	\$22,456.53	\$22,776.23	\$17,978.45	\$8,984.89
TCC		\$5,340.79	\$2,299.93	\$2,301.47	\$787.71	\$5,922.69	\$14,880.42
	7	8	9	10	11	12	13
ENERGY	\$13,419.02	(\$26,957.91)	(\$5,741.12)	(\$1,703.73)	(\$8,287.85)	(\$4,918.28)	(\$5,200.23)
TRANSMISSION SERVICE	(\$708.57)	(\$1,738.80)	(\$1,129.83)	(\$1,537.35)	(\$1,943.05)	(\$2,106.08)	(\$1,906.16)
UPLIFT	(\$286.09)	(\$299.54)	\$6.19	(\$54.54)	(\$2.40)	\$8.80	(\$1.79)
RESIDUALS	(\$25,860.45)	\$10,454.42	(\$361.20)	(\$7,396.06)	\$74.19	(\$1,434.50)	(\$1,697.42)
ANCILLARY SERVICES	\$1,835.77	\$17,342.65	\$22,744.01	(\$31,623.10)	\$7,564.98	\$1,439.79	\$7,328.39
TCC	\$22,528.03	\$6,368.23	\$1,435.50	\$55,523.96	\$16,323.07	\$22,291.26	\$16,480.23
	14	15	16	17	18	19	20
ENERGY	(\$5,624.04)	(\$8,683.44)	\$34.00	\$4,500.00	(\$9,481.07)	(\$3,998.01)	(\$14,517.59)
TRANSMISSION SERVICE	(\$1,563.15)	(\$1,694.30)	\$3,691.00	\$3,854.00	(\$1,489.01)	(\$1,404.11)	(\$1,861.32)
UPLIFT	(\$9.51)	\$93.81	(\$209.00)	\$73.61	(\$20.97)	(\$0.27)	\$12,161.54
RESIDUALS	(\$1,737.61)	(\$876.46)	\$350.00	\$4,500.00	\$2,172.25	(\$2,722.16)	\$1,494.31
ANCILLARY SERVICES	\$23,128.99	\$21,984.47	\$18,053.06	\$2,246.00	\$13,659.16	\$3,517.97	\$15,578.48
TCC	\$950.24	\$2,248.53	\$5,924.09	\$2,276.86	\$10,244.75	\$20,455.99	\$8,073.47
	21	22	23	24	25	26	27
ENERGY	(\$21,246.74)	(\$7,616.70)	\$4,956.25	(\$27,594.15)	(\$20,826.14)	(\$21,328.25)	(\$26,397.30)
TRANSMISSION SERVICE	(\$1,112.85)	(\$1,700.80)	(\$1,760.80)	(\$2,104.79)	(\$2,543.86)	(\$2,217.57)	(\$2,434.01)
UPLIFT	(\$173.36)	\$63.62	(\$52.41)	(\$165.23)	(\$372.77)	(\$18.60)	(\$5,752.65)
RESIDUALS	\$11,131.13	\$115.83	(\$11,138.78)	\$11,595.23	(\$1,758.00)	(\$1,582.86)	(\$544.57)
ANCILLARY SERVICES	(\$21,581.92)	\$22,745.46	\$22,620.90	\$31,864.02	\$20,351.53	(\$12,479.84)	(\$5,069.40)
TCC	\$45,732.65	\$1,047.83	\$1,180.02	(\$8,348.60)	\$2,813.25	\$35,807.52	\$28,278.95
	28	29	30				
ENERGY	(\$58,918.68)	(\$33,706.25)	(\$39,238.11)				
TRANSMISSION SERVICE	(\$2,889.26)	(\$1,876.17)	(\$1,396.68)				
UPLIFT	\$295.70	\$3,905.44	\$10,556.63				
RESIDUALS	(\$247.30)	\$734.18	\$10,202.67				
ANCILLARY SERVICES	\$28,282.14	\$26,634.65	\$19,934.89				
TCC	(\$5,352.87)	(\$3,060.21)	\$3,906.13				



SETTLEMENTS REPORT
 June 2021 Settlement Adjustment
 November 5, 2021

Initial Settlement – Market Supply Analysis

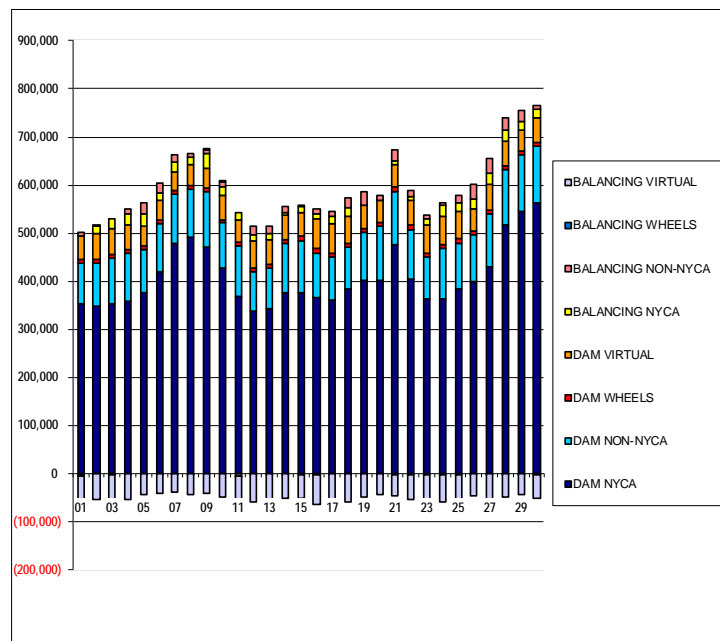
	MONDAY	TUESDAY	WEDNESDAY	THURSDAY	FRIDAY	SATURDAY	SUNDAY
		1	2	3	4	5	6
DAM NYCA		353,920	349,129	352,626	357,279	377,338	418,465
DAM NON-NYCA		84,198	89,267	95,375	99,660	87,266	100,157
DAM WHEELS		8,151	7,640	7,720	7,613	8,000	7,934
DAM VIRTUAL		47,950	54,012	52,388	53,586	42,027	40,653
BALANCING NYCA		(3,366)	13,211	21,689	20,901	24,823	15,983
BALANCING NON-NYCA		7,085	4,477	(775)	10,242	24,724	21,602
BALANCING WHEELS		(1,728)	(1,120)	(1,030)	(832)	(1,565)	(819)
BALANCING VIRTUAL		(47,950)	(54,012)	(52,388)	(53,586)	(42,027)	(40,653)
	7	8	9	10	11	12	13
DAM NYCA	478,052	492,080	470,365	428,193	368,352	337,425	341,617
DAM NON-NYCA	101,926	99,296	116,529	92,749	104,690	82,068	85,211
DAM WHEELS	7,737	8,050	7,200	7,200	7,200	7,200	7,200
DAM VIRTUAL	39,429	43,521	40,716	49,871	47,566	57,208	53,031
BALANCING NYCA	19,957	14,540	30,668	18,034	15,921	12,172	11,187
BALANCING NON-NYCA	16,744	7,182	7,519	10,422	(5,445)	17,526	16,972
BALANCING WHEELS	(478)	(540)	180	480	(1,335)	(1,615)	(1,190)
BALANCING VIRTUAL	(39,429)	(43,521)	(40,716)	(49,871)	(47,566)	(57,208)	(53,031)
	14	15	16	17	18	19	20
DAM NYCA	377,281	376,134	366,214	360,803	383,124	401,851	402,075
DAM NON-NYCA	102,361	108,191	92,593	90,398	86,953	100,331	113,361
DAM WHEELS	7,240	8,700	8,450	7,615	7,768	8,012	7,768
DAM VIRTUAL	50,665	48,786	62,678	59,789	57,277	48,354	44,120
BALANCING NYCA	5,046	14,697	11,233	15,481	17,858	565	1,230
BALANCING NON-NYCA	12,308	1,331	9,403	10,434	21,555	27,997	10,571
BALANCING WHEELS	(1,243)	(2,353)	(2,695)	(1,690)	(1,588)	(1,662)	(1,163)
BALANCING VIRTUAL	(50,665)	(48,786)	(62,678)	(59,789)	(57,277)	(48,354)	(44,120)
	21	22	23	24	25	26	27
DAM NYCA	475,885	403,859	362,637	362,042	383,441	400,371	430,554
DAM NON-NYCA	111,354	104,084	86,519	105,527	96,327	95,319	108,218
DAM WHEELS	9,692	8,842	7,865	9,217	9,900	8,086	8,389
DAM VIRTUAL	44,636	50,895	60,345	57,889	56,043	46,327	53,525
BALANCING NYCA	9,461	8,100	13,150	23,685	18,597	21,661	24,145
BALANCING NON-NYCA	23,284	12,530	7,851	4,322	14,844	30,258	29,906
BALANCING WHEELS	(2,832)	(2,237)	(1,904)	(2,715)	(3,045)	(1,126)	(1,213)
BALANCING VIRTUAL	(44,636)	(50,895)	(60,345)	(57,889)	(56,043)	(46,327)	(53,525)
	28	29	30				
DAM NYCA	517,177	544,682	563,298				
DAM NON-NYCA	114,897	117,584	118,018				
DAM WHEELS	8,683	8,043	8,314				
DAM VIRTUAL	49,164	42,903	49,871				
BALANCING NYCA	23,806	19,857	17,540				
BALANCING NON-NYCA	26,540	22,264	8,201				
BALANCING WHEELS	(973)	(723)	(1,992)				
BALANCING VIRTUAL	(49,164)	(42,903)	(49,871)				



SETTLEMENTS REPORT
 June 2021 Settlement Adjustment
 November 5, 2021

4-Month Settlement Adjustment – Market Supply Analysis

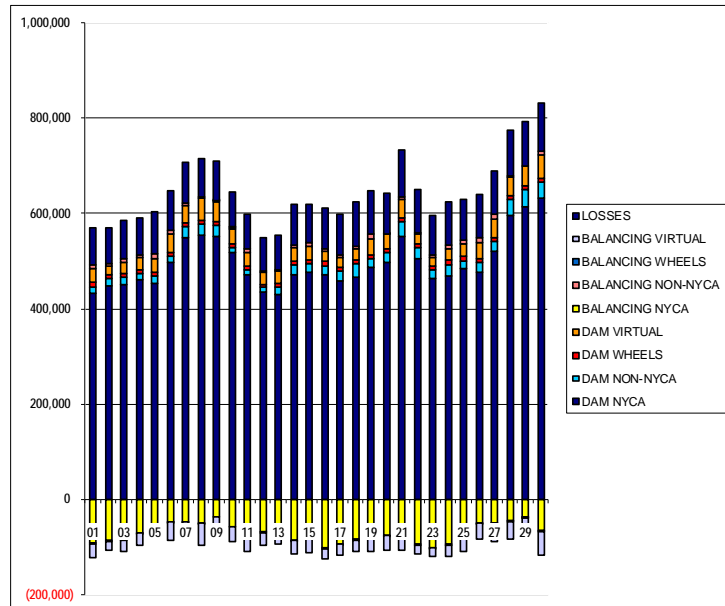
	MONDAY	TUESDAY	WEDNESDAY	THURSDAY	FRIDAY	SATURDAY	SUNDAY
		1	2	3	4	5	6
DAM NYCA		353,920	349,129	352,626	357,279	377,338	418,465
DAM NON-NYCA		84,198	89,267	95,375	99,660	87,266	100,157
DAM WHEELS		8,151	7,640	7,720	7,613	8,000	7,934
DAM VIRTUAL		47,950	54,012	52,388	53,586	42,027	40,653
BALANCING NYCA		(3,575)	13,059	22,008	20,761	24,629	15,813
BALANCING NON-NYCA		7,085	4,477	(775)	10,242	24,724	21,602
BALANCING WHEELS		(1,728)	(1,120)	(1,030)	(832)	(1,565)	(819)
BALANCING VIRTUAL		(47,950)	(54,012)	(52,388)	(53,586)	(42,027)	(40,653)
	7	8	9	10	11	12	13
DAM NYCA	478,052	492,080	470,365	428,193	368,352	337,425	341,617
DAM NON-NYCA	101,926	99,296	116,529	92,749	104,690	82,068	85,211
DAM WHEELS	7,737	8,050	7,200	7,200	7,200	7,200	7,200
DAM VIRTUAL	39,429	43,521	40,716	49,871	47,566	57,208	53,031
BALANCING NYCA	19,791	14,306	30,677	17,892	15,714	12,013	11,034
BALANCING NON-NYCA	16,744	7,182	7,519	10,422	(5,445)	17,526	16,972
BALANCING WHEELS	(478)	(540)	180	480	(1,335)	(1,615)	(1,190)
BALANCING VIRTUAL	(39,429)	(43,521)	(40,716)	(49,871)	(47,566)	(57,208)	(53,031)
	14	15	16	17	18	19	20
DAM NYCA	377,281	376,134	366,214	360,803	383,124	401,851	402,075
DAM NON-NYCA	102,361	108,191	92,593	90,398	86,953	100,331	113,361
DAM WHEELS	7,240	8,700	8,450	7,615	7,768	8,012	7,768
DAM VIRTUAL	50,665	48,786	62,678	59,789	57,277	48,354	44,120
BALANCING NYCA	4,841	14,429	10,996	15,239	17,663	381	958
BALANCING NON-NYCA	12,308	1,331	9,403	10,434	21,555	27,997	10,541
BALANCING WHEELS	(1,243)	(2,353)	(2,695)	(1,690)	(1,588)	(1,662)	(1,163)
BALANCING VIRTUAL	(50,665)	(48,786)	(62,678)	(59,789)	(57,277)	(48,354)	(44,120)
	21	22	23	24	25	26	27
DAM NYCA	475,885	403,859	362,637	362,042	383,441	400,371	430,554
DAM NON-NYCA	111,354	104,084	86,519	105,527	96,327	95,319	108,218
DAM WHEELS	9,692	8,842	7,865	9,217	9,900	8,086	8,389
DAM VIRTUAL	44,636	50,895	60,345	57,889	56,043	46,327	53,525
BALANCING NYCA	9,345	7,941	12,940	23,250	17,926	21,079	23,567
BALANCING NON-NYCA	23,284	12,530	7,851	4,322	14,844	30,258	29,906
BALANCING WHEELS	(2,832)	(2,237)	(1,904)	(2,715)	(3,045)	(1,126)	(1,213)
BALANCING VIRTUAL	(44,636)	(50,895)	(60,345)	(57,889)	(56,043)	(46,327)	(53,525)
	28	29	30				
DAM NYCA	517,177	544,682	563,298				
DAM NON-NYCA	114,897	117,584	118,018				
DAM WHEELS	8,683	8,043	8,314				
DAM VIRTUAL	49,164	42,903	49,871				
BALANCING NYCA	23,172	19,458	17,271				
BALANCING NON-NYCA	26,540	22,264	8,201				
BALANCING WHEELS	(973)	(723)	(1,992)				
BALANCING VIRTUAL	(49,164)	(42,903)	(49,871)				



SETTLEMENTS REPORT
 June 2021 Settlement Adjustment
 November 5, 2021

Initial Settlement – Market Withdrawals Analysis

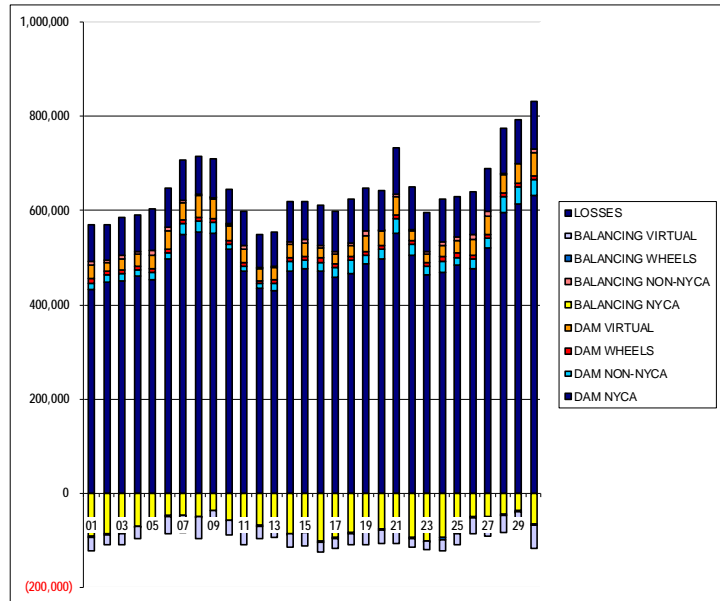
	MONDAY	TUESDAY	WEDNESDAY	THURSDAY	FRIDAY	SATURDAY	SUNDAY
		1	2	3	4	5	6
DAM NYCA		433,657	447,988	451,469	462,214	453,703	496,551
DAM NON-NYCA		12,750	14,626	14,448	12,475	15,765	14,757
DAM WHEELS		8,151	7,640	7,720	7,613	8,000	7,934
DAM VIRTUAL		29,389	20,068	24,372	25,313	27,581	36,855
BALANCING NYCA		(91,335)	(87,056)	(84,959)	(69,590)	(52,986)	(47,741)
BALANCING NON-NYCA		7,210	3,975	6,959	5,077	10,689	8,222
BALANCING WHEELS		(1,728)	(1,120)	(1,030)	(832)	(1,565)	(819)
BALANCING VIRTUAL		(29,389)	(20,068)	(24,372)	(25,313)	(27,581)	(36,855)
UFE/LOSSES		79,555	76,552	80,998	77,906	86,979	84,418
	7	8	9	10	11	12	13
DAM NYCA	550,307	554,831	551,652	518,657	471,705	435,102	428,573
DAM NON-NYCA	21,447	23,065	23,038	10,253	9,576	9,147	16,269
DAM WHEELS	7,737	8,050	7,200	7,200	7,200	7,200	7,200
DAM VIRTUAL	35,959	45,321	41,301	30,616	30,659	24,865	27,371
BALANCING NYCA	(46,532)	(49,677)	(37,403)	(58,221)	(77,031)	(69,076)	(64,839)
BALANCING NON-NYCA	5,038	2,356	4,038	4,090	6,004	3,433	1,054
BALANCING WHEELS	(478)	(540)	180	480	(1,335)	(1,615)	(1,190)
BALANCING VIRTUAL	(35,959)	(45,321)	(41,301)	(30,616)	(30,659)	(24,865)	(27,371)
UFE/LOSSES	86,420	82,523	83,756	74,619	73,264	70,585	73,931
	14	15	16	17	18	19	20
DAM NYCA	471,509	477,250	471,112	457,305	466,824	486,726	496,431
DAM NON-NYCA	20,033	16,868	19,589	22,518	26,675	18,366	21,067
DAM WHEELS	7,240	8,700	8,450	7,615	7,768	8,012	7,768
DAM VIRTUAL	28,632	29,278	20,485	21,214	23,533	33,828	30,479
BALANCING NYCA	(85,864)	(80,987)	(102,552)	(93,476)	(84,153)	(74,131)	(76,064)
BALANCING NON-NYCA	5,890	5,614	5,739	3,808	6,948	10,071	2,008
BALANCING WHEELS	(1,243)	(2,353)	(2,695)	(1,690)	(1,588)	(1,662)	(1,163)
BALANCING VIRTUAL	(28,632)	(29,278)	(20,485)	(21,214)	(23,533)	(33,828)	(30,479)
UFE/LOSSES	85,429	81,609	85,556	86,960	93,196	89,712	83,796
	21	22	23	24	25	26	27
DAM NYCA	552,145	504,156	463,616	468,845	483,818	475,941	520,912
DAM NON-NYCA	29,624	24,382	19,145	23,801	16,926	21,162	20,884
DAM WHEELS	9,692	8,842	7,865	9,217	9,900	8,086	8,389
DAM VIRTUAL	37,728	18,785	16,541	23,384	24,638	33,728	38,776
BALANCING NYCA	(66,380)	(94,317)	(100,648)	(94,948)	(81,642)	(50,057)	(49,848)
BALANCING NON-NYCA	6,555	4,015	4,826	7,501	8,310	9,146	8,940
BALANCING WHEELS	(2,832)	(2,237)	(1,904)	(2,715)	(3,045)	(1,126)	(1,213)
BALANCING VIRTUAL	(37,728)	(18,785)	(16,541)	(23,384)	(24,638)	(33,728)	(38,776)
UFE/LOSSES	98,042	90,336	83,218	90,378	85,798	91,418	91,935
	28	29	30				
DAM NYCA	595,508	614,803	631,181				
DAM NON-NYCA	33,987	34,225	33,813				
DAM WHEELS	8,683	8,043	8,314				
DAM VIRTUAL	38,086	42,117	50,647				
BALANCING NYCA	(45,330)	(37,313)	(65,007)				
BALANCING NON-NYCA	2,283	(770)	6,565				
BALANCING WHEELS	(973)	(723)	(1,992)				
BALANCING VIRTUAL	(38,086)	(42,117)	(50,647)				
UFE/LOSSES	95,971	93,441	100,505				



SETTLEMENTS REPORT
 June 2021 Settlement Adjustment
 November 5, 2021

4-Month Settlement Adjustment – Market Withdrawals Analysis

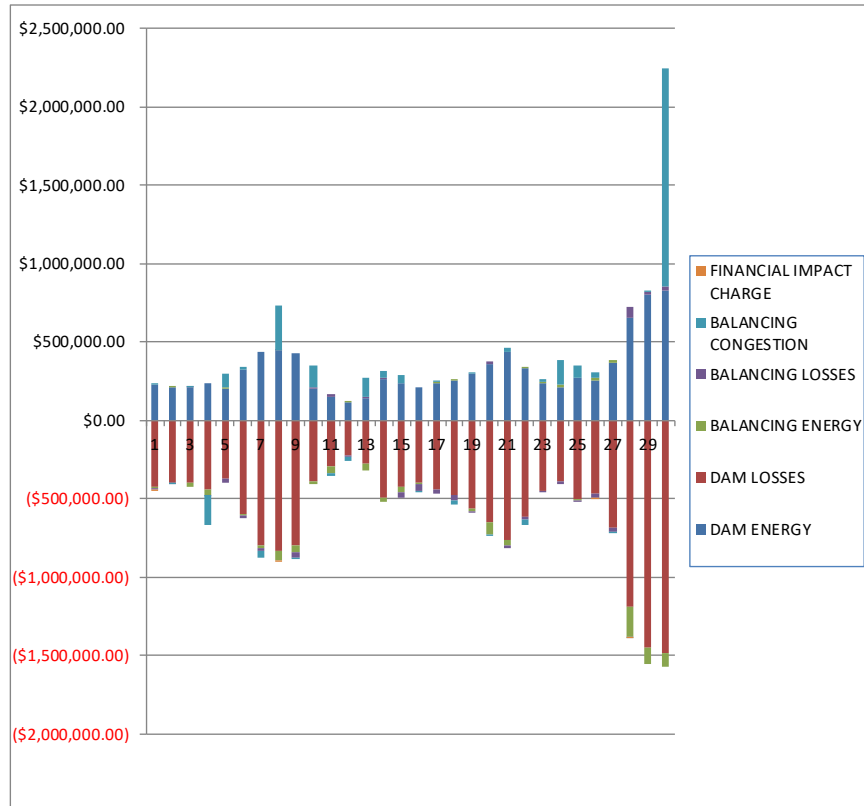
	MONDAY	TUESDAY	WEDNESDAY	THURSDAY	FRIDAY	SATURDAY	SUNDAY
		1	2	3	4	5	6
DAM NYCA		433,657	447,988	451,469	462,214	453,703	496,551
DAM NON-NYCA		12,750	14,626	14,448	12,475	15,765	14,757
DAM WHEELS		8,151	7,640	7,720	7,613	8,000	7,934
DAM VIRTUAL		29,389	20,068	24,372	25,313	27,581	36,855
BALANCING NYCA		(91,525)	(87,199)	(84,626)	(69,736)	(53,181)	(47,907)
BALANCING NON-NYCA		7,210	3,975	6,959	5,077	10,689	8,222
BALANCING WHEELS		(1,728)	(1,120)	(1,030)	(832)	(1,565)	(819)
BALANCING VIRTUAL		(29,389)	(20,068)	(24,372)	(25,313)	(27,581)	(36,855)
UFE/LOSSES		79,536	76,542	80,985	77,911	86,980	84,414
	7	8	9	10	11	12	13
DAM NYCA	550,307	554,831	551,652	518,657	471,705	435,102	428,573
DAM NON-NYCA	21,447	23,065	23,038	10,253	9,576	9,147	16,269
DAM WHEELS	7,737	8,050	7,200	7,200	7,200	7,200	7,200
DAM VIRTUAL	35,959	45,321	41,301	30,616	30,659	24,865	27,371
BALANCING NYCA	(46,376)	(49,902)	(37,382)	(58,369)	(77,208)	(69,206)	(64,971)
BALANCING NON-NYCA	5,038	2,356	4,038	4,090	6,004	3,433	1,054
BALANCING WHEELS	(478)	(540)	180	480	(1,335)	(1,615)	(1,190)
BALANCING VIRTUAL	(35,959)	(45,321)	(41,301)	(30,616)	(30,659)	(24,865)	(27,371)
UFE/LOSSES	86,097	82,513	83,744	74,626	73,234	70,556	73,910
	14	15	16	17	18	19	20
DAM NYCA	471,509	477,250	471,112	457,305	466,824	486,726	496,431
DAM NON-NYCA	20,033	16,868	19,589	22,518	26,675	18,366	21,067
DAM WHEELS	7,240	8,700	8,450	7,615	7,768	8,012	7,768
DAM VIRTUAL	28,632	29,278	20,485	21,214	23,533	33,828	30,479
BALANCING NYCA	(86,047)	(81,248)	(102,782)	(93,706)	(84,335)	(74,294)	(76,324)
BALANCING NON-NYCA	5,890	5,614	5,739	3,808	6,948	10,071	2,008
BALANCING WHEELS	(1,243)	(2,353)	(2,695)	(1,690)	(1,588)	(1,662)	(1,163)
BALANCING VIRTUAL	(28,632)	(29,278)	(20,485)	(21,214)	(23,533)	(33,828)	(30,479)
UFE/LOSSES	85,407	81,601	85,549	86,948	93,184	89,692	83,754
	21	22	23	24	25	26	27
DAM NYCA	552,145	504,156	463,616	468,845	483,818	475,941	520,912
DAM NON-NYCA	29,624	24,382	19,145	23,801	16,926	21,162	20,884
DAM WHEELS	9,692	8,842	7,865	9,217	9,900	8,086	8,389
DAM VIRTUAL	37,728	18,785	16,541	23,384	24,638	33,728	38,776
BALANCING NYCA	(66,470)	(94,468)	(100,855)	(95,355)	(82,286)	(50,631)	(50,392)
BALANCING NON-NYCA	6,555	4,015	4,826	7,501	8,310	9,146	8,940
BALANCING WHEELS	(2,832)	(2,237)	(1,904)	(2,715)	(3,045)	(1,126)	(1,213)
BALANCING VIRTUAL	(37,728)	(18,785)	(16,541)	(23,384)	(24,638)	(33,728)	(38,776)
UFE/LOSSES	98,015	90,328	83,215	90,350	85,770	91,409	91,901
	28	29	30				
DAM NYCA	595,508	614,803	631,181				
DAM NON-NYCA	33,987	34,225	33,813				
DAM WHEELS	8,683	8,043	8,314				
DAM VIRTUAL	38,086	42,117	50,647				
BALANCING NYCA	(45,948)	(37,702)	(65,351)				
BALANCING NON-NYCA	2,283	(770)	6,565				
BALANCING WHEELS	(973)	(723)	(1,992)				
BALANCING VIRTUAL	(38,086)	(42,117)	(50,647)				
UFE/LOSSES	95,955	93,440	100,600				



SETTLEMENTS REPORT
 June 2021 Settlement Adjustment
 November 5, 2021

Initial Settlement – Market Residuals Analysis

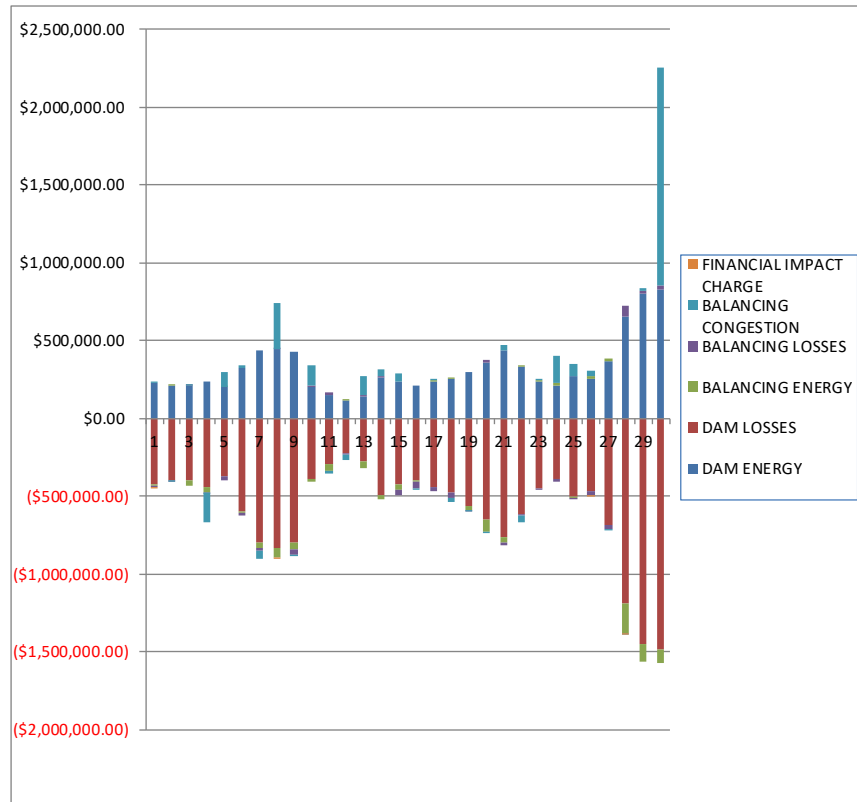
	MONDAY	TUESDAY	WEDNESDAY	THURSDAY	FRIDAY	SATURDAY	SUNDAY
		1	2	3	4	5	6
DAM ENERGY		\$227,315.13	\$206,542.77	\$206,289.38	\$235,071.80	\$202,040.65	\$326,576.94
DAM LOSSES		(\$425,096.44)	(\$396,497.33)	(\$401,224.72)	(\$445,444.30)	(\$373,081.54)	(\$601,405.59)
BALANCING ENERGY		(\$7,343.68)	\$1,116.53	(\$27,193.34)	(\$27,325.08)	\$3,695.31	(\$3,802.04)
BALANCING LOSSES		(\$6,816.65)	(\$6,170.97)	\$7,109.57	(\$3,842.73)	(\$29,412.83)	(\$18,011.94)
BALANCING CONGESTION		\$6,868.15	(\$5,239.63)	\$6,174.63	(\$191,097.31)	\$94,052.27	\$13,712.88
FINANCIAL IMPACT CHARGE		(\$42.41)	\$0.00	\$0.00	\$0.00	\$0.00	\$0.00
	7	8	9	10	11	12	13
DAM ENERGY	\$432,277.57	\$448,300.34	\$424,393.58	\$205,564.80	\$149,800.67	\$116,022.13	\$143,167.74
DAM LOSSES	(\$798,691.03)	(\$831,037.08)	(\$797,816.43)	(\$393,634.69)	(\$294,406.74)	(\$227,682.65)	(\$276,084.37)
BALANCING ENERGY	(\$14,144.49)	(\$58,832.94)	(\$46,844.53)	(\$11,943.01)	(\$46,600.58)	\$3,621.54	(\$41,248.65)
BALANCING LOSSES	(\$16,874.49)	\$173.99	(\$32,608.37)	\$4,731.95	\$15,782.20	(\$1,355.06)	\$9,402.80
BALANCING CONGESTION	(\$47,071.52)	\$284,618.49	(\$9,644.38)	\$138,366.23	(\$11,242.86)	(\$33,900.36)	\$115,294.44
FINANCIAL IMPACT CHARGE	\$0.00	(\$9.30)	\$0.00	\$0.00	\$0.00	\$0.00	\$0.00
	14	15	16	17	18	19	20
DAM ENERGY	\$265,836.72	\$239,125.06	\$212,456.97	\$234,696.04	\$253,333.55	\$300,290.24	\$356,231.19
DAM LOSSES	(\$496,198.48)	(\$425,205.35)	(\$401,713.07)	(\$442,803.56)	(\$473,680.82)	(\$561,213.76)	(\$652,120.94)
BALANCING ENERGY	(\$25,367.05)	(\$31,256.39)	(\$7,146.10)	\$7,744.65	\$12,700.72	(\$23,562.10)	(\$74,806.67)
BALANCING LOSSES	\$7,979.21	(\$35,901.57)	(\$38,371.18)	(\$26,382.28)	(\$35,875.62)	(\$6,661.76)	\$16,306.05
BALANCING CONGESTION	\$40,191.24	\$51,892.93	(\$2,566.21)	\$10,094.36	(\$30,753.06)	\$1,970.75	(\$4,748.71)
FINANCIAL IMPACT CHARGE	\$0.00	\$0.00	\$0.00	\$0.00	\$0.00	\$0.00	\$0.00
	21	22	23	24	25	26	27
DAM ENERGY	\$433,029.50	\$330,400.92	\$232,369.51	\$206,109.94	\$269,683.45	\$252,578.48	\$368,961.80
DAM LOSSES	(\$766,717.79)	(\$619,358.17)	(\$448,533.27)	(\$391,727.88)	(\$506,462.41)	(\$471,554.31)	(\$688,411.86)
BALANCING ENERGY	(\$31,586.32)	\$3,030.27	\$13,466.20	\$17,603.78	(\$5,496.11)	\$15,947.56	\$17,313.28
BALANCING LOSSES	(\$17,785.30)	(\$9,768.28)	(\$2,198.61)	(\$13,500.32)	(\$5,710.05)	(\$21,288.28)	(\$25,696.72)
BALANCING CONGESTION	\$28,442.43	(\$38,216.60)	\$15,763.11	\$163,421.63	\$76,598.03	\$37,410.52	(\$6,041.64)
FINANCIAL IMPACT CHARGE	\$0.00	\$0.00	\$0.00	\$0.00	\$0.00	(\$5,347.58)	\$0.00
	28	29	30				
DAM ENERGY	\$656,714.50	\$802,921.89	\$824,580.70				
DAM LOSSES	(\$1,192,259.09)	(\$1,449,165.37)	(\$1,486,624.01)				
BALANCING ENERGY	(\$187,491.10)	(\$109,276.49)	(\$84,187.07)				
BALANCING LOSSES	\$63,094.45	\$14,208.40	\$31,000.61				
BALANCING CONGESTION	(\$3,013.64)	\$13,540.47	\$1,392,343.10				
FINANCIAL IMPACT CHARGE	(\$2.97)	\$0.00	\$0.00				



SETTLEMENTS REPORT
 June 2021 Settlement Adjustment
 November 5, 2021

4-Month Settlement Adjustment – Market Residuals Analysis

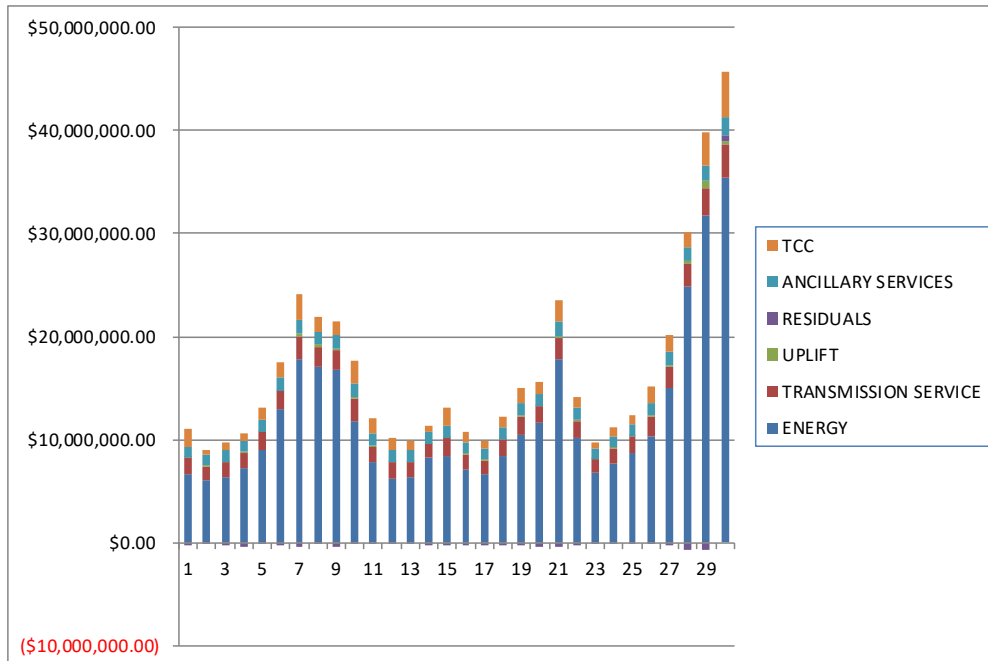
	MONDAY	TUESDAY	WEDNESDAY	THURSDAY	FRIDAY	SATURDAY	SUNDAY
		1	2	3	4	5	6
DAM ENERGY		\$227,315.13	\$206,542.77	\$206,289.39	\$235,071.80	\$202,040.65	\$326,576.94
DAM LOSSES		(\$425,096.45)	(\$396,497.33)	(\$401,224.72)	(\$445,444.31)	(\$373,081.54)	(\$601,405.59)
BALANCING ENERGY		(\$7,510.52)	\$920.59	(\$27,670.52)	(\$27,071.73)	\$3,446.58	(\$4,037.04)
BALANCING LOSSES		(\$6,716.57)	(\$6,109.84)	\$6,980.04	(\$3,668.12)	(\$29,244.92)	(\$17,747.21)
BALANCING CONGESTION		\$6,536.00	(\$5,349.95)	\$6,062.11	(\$191,888.13)	\$91,145.48	\$11,961.76
FINACIAL IMPACT CHARGE		(\$42.41)	\$0.00	\$0.00	\$0.00	\$0.00	\$0.00
	7	8	9	10	11	12	13
DAM ENERGY	\$432,277.56	\$448,300.33	\$424,393.57	\$205,564.80	\$149,800.67	\$116,022.13	\$143,167.74
DAM LOSSES	(\$798,691.03)	(\$831,037.09)	(\$797,816.44)	(\$393,634.68)	(\$294,406.74)	(\$227,682.64)	(\$276,084.38)
BALANCING ENERGY	(\$33,548.45)	(\$59,114.39)	(\$46,821.86)	(\$11,826.97)	(\$47,463.66)	\$3,474.70	(\$41,871.46)
BALANCING LOSSES	(\$18,675.08)	\$410.72	(\$31,992.17)	\$5,532.33	\$15,948.17	(\$1,333.94)	\$9,262.63
BALANCING CONGESTION	(\$51,727.41)	\$295,117.71	(\$10,644.43)	\$130,053.74	(\$10,471.56)	(\$35,209.15)	\$114,360.01
FINACIAL IMPACT CHARGE	\$0.00	(\$9.36)	\$0.00	\$0.00	\$0.00	\$0.00	\$0.00
	14	15	16	17	18	19	20
DAM ENERGY	\$265,836.71	\$239,125.06	\$212,456.98	\$234,696.05	\$253,333.55	\$300,290.24	\$356,231.19
DAM LOSSES	(\$496,198.48)	(\$425,205.35)	(\$401,713.07)	(\$442,803.55)	(\$473,680.82)	(\$561,213.77)	(\$652,120.94)
BALANCING ENERGY	(\$25,860.40)	(\$31,408.26)	(\$7,292.26)	\$7,597.11	\$12,420.20	(\$24,125.08)	(\$76,021.67)
BALANCING LOSSES	\$7,906.50	(\$35,916.22)	(\$38,145.36)	(\$26,248.04)	(\$36,470.70)	(\$6,221.01)	\$18,492.98
BALANCING CONGESTION	\$39,019.70	\$51,182.99	(\$3,621.60)	\$9,254.27	(\$27,705.21)	(\$629.17)	(\$4,226.33)
FINACIAL IMPACT CHARGE	\$0.00	\$0.00	\$0.00	\$0.00	\$0.00	\$0.00	\$0.00
	21	22	23	24	25	26	27
DAM ENERGY	\$433,029.50	\$330,400.92	\$232,369.51	\$206,109.94	\$269,683.44	\$252,578.49	\$368,961.81
DAM LOSSES	(\$766,717.78)	(\$619,358.17)	(\$448,533.26)	(\$391,727.88)	(\$506,462.41)	(\$471,554.32)	(\$688,411.86)
BALANCING ENERGY	(\$32,249.06)	\$2,800.07	\$13,422.99	\$17,018.57	(\$6,404.41)	\$15,631.31	\$15,809.34
BALANCING LOSSES	(\$15,341.16)	(\$8,056.25)	(\$963.84)	(\$12,728.88)	(\$5,586.46)	(\$20,857.95)	(\$24,871.10)
BALANCING CONGESTION	\$37,792.15	(\$39,582.60)	\$3,432.76	\$174,830.63	\$75,624.75	\$35,713.59	(\$5,907.90)
FINACIAL IMPACT CHARGE	\$0.00	\$0.00	\$0.00	\$0.00	\$0.00	(\$5,347.59)	\$0.00
	28	29	30				
DAM ENERGY	\$656,714.49	\$802,921.89	\$824,580.70				
DAM LOSSES	(\$1,192,259.09)	(\$1,449,165.37)	(\$1,486,624.01)				
BALANCING ENERGY	(\$188,376.21)	(\$109,835.81)	(\$82,097.51)				
BALANCING LOSSES	\$63,929.22	\$15,193.63	\$31,742.11				
BALANCING CONGESTION	(\$3,210.60)	\$13,848.74	\$1,399,714.71				
FINACIAL IMPACT CHARGE	(\$2.96)	\$0.00	\$0.00				



SETTLEMENTS REPORT
 June 2021 Settlement Adjustment
 November 5, 2021

Initial Settlement – Market Costs Analysis

	MONDAY	TUESDAY	WEDNESDAY	THURSDAY	FRIDAY	SATURDAY	SUNDAY
		1	2	3	4	5	6
ENERGY		\$6,612,881.80	\$6,089,422.85	\$6,381,000.72	\$7,256,801.22	\$9,027,120.83	\$12,908,705.68
TRANSMISSION SERVICE		\$1,591,196.27	\$1,280,060.64	\$1,400,466.60	\$1,438,586.88	\$1,690,130.03	\$1,826,472.59
UPLIFT		\$43,063.82	\$83,260.27	\$75,305.18	\$117,575.16	\$77,989.99	\$49,229.91
RESIDUALS		(\$205,115.90)	(\$200,248.63)	(\$208,844.48)	(\$432,637.62)	(\$102,706.14)	(\$282,929.75)
ANCILLARY SERVICES		\$1,030,764.54	\$1,032,865.68	\$1,059,713.24	\$1,040,055.52	\$1,144,939.52	\$1,313,214.18
TCC		\$1,746,619.34	\$470,621.13	\$807,423.68	\$694,036.50	\$1,113,074.20	\$1,341,742.87
	7	8	9	10	11	12	13
ENERGY	\$17,743,919.76	\$17,113,505.57	\$16,831,180.18	\$11,802,716.00	\$7,739,938.45	\$6,235,659.14	\$6,330,205.26
TRANSMISSION SERVICE	\$2,272,737.26	\$1,928,432.52	\$1,831,535.44	\$2,103,587.30	\$1,601,406.21	\$1,557,469.63	\$1,415,092.94
UPLIFT	\$212,738.41	\$171,490.82	\$190,604.52	\$152,822.23	\$70,745.18	\$64,254.16	\$71,182.53
RESIDUALS	(\$444,503.96)	(\$156,786.50)	(\$462,520.13)	(\$56,914.72)	(\$186,667.31)	(\$143,294.40)	(\$49,468.04)
ANCILLARY SERVICES	\$1,398,061.48	\$1,264,047.08	\$1,255,924.66	\$1,339,417.82	\$1,154,041.26	\$1,113,931.76	\$1,092,155.33
TCC	\$2,428,229.02	\$1,415,895.84	\$1,299,437.32	\$2,252,220.04	\$1,513,942.68	\$1,257,343.40	\$933,500.39
	14	15	16	17	18	19	20
ENERGY	\$8,201,745.10	\$8,409,002.77	\$7,054,818.73	\$6,699,735.32	\$8,436,149.87	\$10,520,381.34	\$11,604,626.60
TRANSMISSION SERVICE	\$1,355,309.25	\$1,680,573.78	\$1,500,770.30	\$1,300,496.91	\$1,519,625.68	\$1,744,002.03	\$1,619,260.91
UPLIFT	\$80,784.35	\$108,044.79	\$85,350.29	\$84,143.33	\$79,364.75	\$95,077.72	\$57,232.53
RESIDUALS	(\$207,558.36)	(\$201,345.32)	(\$237,339.59)	(\$216,650.79)	(\$274,275.23)	(\$289,176.63)	(\$359,139.08)
ANCILLARY SERVICES	\$1,113,149.95	\$1,126,799.58	\$1,091,258.86	\$1,067,922.53	\$1,125,653.59	\$1,197,352.18	\$1,204,876.19
TCC	\$617,364.42	\$1,783,677.71	\$1,079,968.50	\$756,675.60	\$1,085,290.78	\$1,389,073.15	\$1,058,917.88
	21	22	23	24	25	26	27
ENERGY	\$17,772,486.67	\$10,197,371.92	\$6,743,063.12	\$7,688,920.89	\$8,753,794.31	\$10,274,728.11	\$14,954,633.31
TRANSMISSION SERVICE	\$2,134,479.64	\$1,569,560.39	\$1,291,637.13	\$1,427,327.83	\$1,513,183.57	\$1,892,340.52	\$2,111,023.78
UPLIFT	\$101,900.67	\$130,408.16	\$108,654.51	\$146,298.29	\$104,823.39	\$185,677.02	\$102,387.64
RESIDUALS	(\$354,617.48)	(\$333,911.86)	(\$189,133.06)	(\$18,092.85)	(\$171,387.09)	(\$192,253.61)	(\$333,875.14)
ANCILLARY SERVICES	\$1,437,378.71	\$1,147,452.62	\$1,048,208.26	\$1,074,779.51	\$1,127,534.00	\$1,230,589.48	\$1,319,559.99
TCC	\$2,152,969.34	\$1,083,331.57	\$581,603.78	\$794,638.66	\$868,915.80	\$1,638,263.79	\$1,715,688.53
	28	29	30				
ENERGY	\$24,849,117.96	\$31,722,301.97	\$35,398,845.70				
TRANSMISSION SERVICE	\$2,248,212.56	\$2,710,521.01	\$3,271,196.78				
UPLIFT	\$259,225.76	\$705,745.10	\$255,361.46				
RESIDUALS	(\$662,957.85)	(\$727,771.10)	\$677,113.33				
ANCILLARY SERVICES	\$1,270,557.60	\$1,466,186.74	\$1,697,893.33				
TCC	\$1,502,108.34	\$3,162,068.52	\$4,405,344.34				



SETTLEMENTS REPORT
 June 2021 Settlement Adjustment
 November 5, 2021

4-Month Settlement Adjustment – Market Costs Analysis

	MONDAY	TUESDAY	WEDNESDAY	THURSDAY	FRIDAY	SATURDAY	SUNDAY
		1	2	3	4	5	6
ENERGY		\$6,608,031.73	\$6,084,361.16	\$6,385,054.28	\$7,251,712.62	\$9,021,004.65	\$12,901,718.62
TRANSMISSION SERVICE		\$1,589,382.14	\$1,278,180.26	\$1,399,915.52	\$1,436,921.82	\$1,688,624.72	\$1,824,780.28
UPLIFT		\$43,024.55	\$83,260.30	\$75,305.12	\$117,571.95	\$77,846.50	\$49,148.06
RESIDUALS		(\$205,514.82)	(\$200,493.76)	(\$209,563.70)	(\$433,000.49)	(\$105,693.75)	(\$284,651.14)
ANCILLARY SERVICES		\$1,049,143.78	\$1,054,259.42	\$1,082,169.77	\$1,062,831.75	\$1,162,917.97	\$1,322,199.07
TCC		\$1,751,960.13	\$472,921.06	\$809,725.15	\$694,824.21	\$1,118,996.89	\$1,356,623.29
	7	8	9	10	11	12	13
ENERGY	\$17,757,338.78	\$17,086,547.66	\$16,825,439.06	\$11,801,012.27	\$7,731,650.60	\$6,230,740.86	\$6,325,005.03
TRANSMISSION SERVICE	\$2,272,028.69	\$1,926,693.72	\$1,830,405.61	\$2,102,049.95	\$1,599,463.16	\$1,555,363.55	\$1,413,186.78
UPLIFT	\$212,452.32	\$171,191.28	\$190,610.71	\$152,767.69	\$70,742.78	\$64,262.96	\$71,180.74
RESIDUALS	(\$470,364.41)	(\$146,332.08)	(\$462,881.33)	(\$64,310.78)	(\$186,593.12)	(\$144,728.90)	(\$51,165.46)
ANCILLARY SERVICES	\$1,399,897.25	\$1,281,389.73	\$1,278,668.67	\$1,307,794.72	\$1,161,606.24	\$1,115,371.55	\$1,099,483.72
TCC	\$2,450,757.05	\$1,422,264.07	\$1,300,872.82	\$2,307,744.00	\$1,530,265.75	\$1,279,634.66	\$949,980.62
	14	15	16	17	18	19	20
ENERGY	\$8,196,121.06	\$8,400,319.33	\$7,048,784.01	\$6,693,013.90	\$8,426,668.80	\$10,516,383.33	\$11,590,109.01
TRANSMISSION SERVICE	\$1,353,746.10	\$1,678,879.48	\$1,499,036.43	\$1,298,830.31	\$1,518,136.67	\$1,742,597.92	\$1,617,399.59
UPLIFT	\$80,774.84	\$108,138.60	\$85,141.29	\$84,216.94	\$79,343.78	\$95,077.45	\$69,394.07
RESIDUALS	(\$209,295.97)	(\$202,221.78)	(\$238,315.31)	(\$217,504.16)	(\$272,102.98)	(\$291,898.79)	(\$357,644.77)
ANCILLARY SERVICES	\$1,136,278.94	\$1,148,784.05	\$1,109,311.92	\$1,089,447.23	\$1,139,312.75	\$1,200,870.15	\$1,220,454.67
TCC	\$618,314.66	\$1,785,926.24	\$1,085,892.59	\$758,952.46	\$1,095,535.53	\$1,409,529.14	\$1,066,991.35
	21	22	23	24	25	26	27
ENERGY	\$17,751,239.93	\$10,189,755.22	\$6,748,019.37	\$7,661,326.74	\$8,732,968.17	\$10,253,399.86	\$14,928,236.01
TRANSMISSION SERVICE	\$2,133,366.79	\$1,567,859.59	\$1,289,876.33	\$1,425,223.04	\$1,510,639.71	\$1,890,122.95	\$2,108,589.77
UPLIFT	\$101,727.31	\$130,471.78	\$108,602.10	\$146,133.06	\$104,450.62	\$185,658.42	\$96,634.99
RESIDUALS	(\$343,486.35)	(\$333,796.03)	(\$200,271.84)	(\$6,497.62)	(\$173,145.09)	(\$193,836.47)	(\$334,419.71)
ANCILLARY SERVICES	\$1,415,796.79	\$1,170,198.08	\$1,070,829.16	\$1,106,643.53	\$1,147,885.53	\$1,218,109.64	\$1,314,490.59
TCC	\$2,198,701.99	\$1,084,379.40	\$582,783.80	\$786,290.06	\$871,729.05	\$1,674,071.31	\$1,743,967.48
	28	29	30				
ENERGY	\$24,790,199.28	\$31,688,595.72	\$35,359,607.59				
TRANSMISSION SERVICE	\$2,245,323.30	\$2,708,644.84	\$3,269,800.10				
UPLIFT	\$259,521.46	\$709,650.54	\$265,918.09				
RESIDUALS	(\$663,205.15)	(\$727,036.92)	\$687,316.00				
ANCILLARY SERVICES	\$1,298,839.74	\$1,492,821.39	\$1,717,828.22				
TCC	\$1,496,755.47	\$3,159,008.31	\$4,409,250.47				

