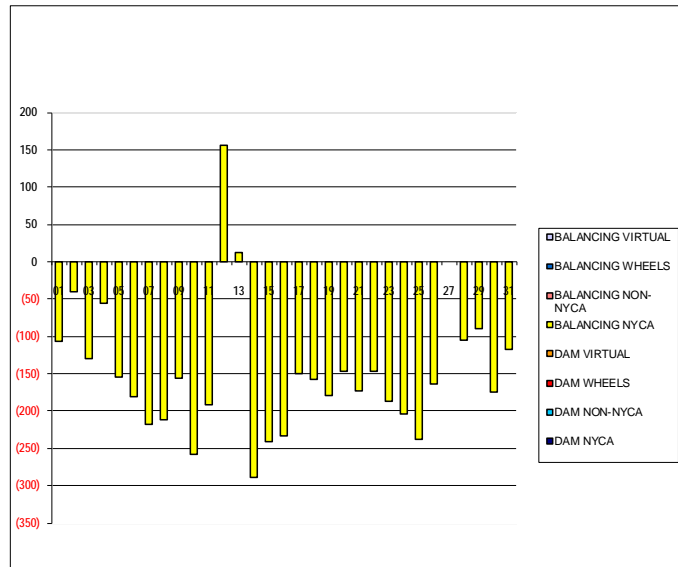


SETTLEMENTS REPORT  
 August 2021 Settlement Adjustment  
 January 10, 2022

Settlement Adjustment – Market Supply Delta Analysis

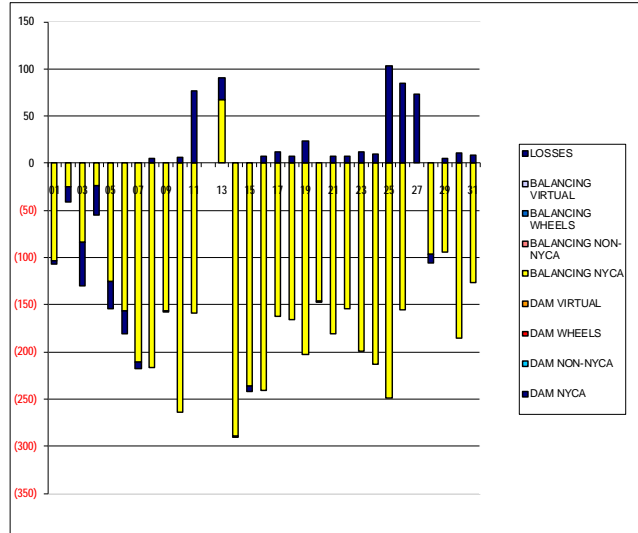
	MONDAY	TUESDAY	WEDNESDAY	THURSDAY	FRIDAY	SATURDAY	SUNDAY
DAM NYCA							1
DAM NON-NYCA							0
DAM WHEELS							0
DAM VIRTUAL							0
BALANCING NYCA							(107)
BALANCING NON-NYCA							0
BALANCING WHEELS							0
BALANCING VIRTUAL							0
	2	3	4	5	6	7	8
DAM NYCA	0	0	0	0	0	0	0
DAM NON-NYCA	0	0	0	0	0	0	0
DAM WHEELS	0	0	0	0	0	0	0
DAM VIRTUAL	0	0	0	0	0	0	0
BALANCING NYCA	(41)	(130)	(55)	(154)	(181)	(218)	(212)
BALANCING NON-NYCA	0	0	0	0	0	0	0
BALANCING WHEELS	0	0	0	0	0	0	0
BALANCING VIRTUAL	0	0	0	0	0	0	0
	9	10	11	12	13	14	15
DAM NYCA	0	0	0	0	0	0	0
DAM NON-NYCA	0	0	0	0	0	0	0
DAM WHEELS	0	0	0	0	0	0	0
DAM VIRTUAL	0	0	0	0	0	0	0
BALANCING NYCA	(157)	(258)	(192)	156	12	(290)	(242)
BALANCING NON-NYCA	0	0	0	0	0	0	0
BALANCING WHEELS	0	0	0	0	0	0	0
BALANCING VIRTUAL	0	0	0	0	0	0	0
	16	17	18	19	20	21	22
DAM NYCA	0	0	0	0	0	0	0
DAM NON-NYCA	0	0	0	0	0	0	0
DAM WHEELS	0	0	0	0	0	0	0
DAM VIRTUAL	0	0	0	0	0	0	0
BALANCING NYCA	(233)	(150)	(158)	(179)	(147)	(173)	(147)
BALANCING NON-NYCA	0	0	0	0	0	0	0
BALANCING WHEELS	0	0	0	0	0	0	0
BALANCING VIRTUAL	0	0	0	0	0	0	0
	23	24	25	26	27	28	29
DAM NYCA	0	0	0	0	0	0	0
DAM NON-NYCA	0	0	0	0	0	0	0
DAM WHEELS	0	0	0	0	0	0	0
DAM VIRTUAL	0	0	0	0	0	0	0
BALANCING NYCA	(186)	(203)	(238)	(164)	0	(105)	(90)
BALANCING NON-NYCA	0	0	0	0	0	0	0
BALANCING WHEELS	0	0	0	0	0	0	0
BALANCING VIRTUAL	0	0	0	0	0	0	0
	30	31					
DAM NYCA	0	0					
DAM NON-NYCA	0	0					
DAM WHEELS	0	0					
DAM VIRTUAL	0	0					
BALANCING NYCA	(175)	(118)					
BALANCING NON-NYCA	0	0					
BALANCING WHEELS	0	0					
BALANCING VIRTUAL	0	0					



SETTLEMENTS REPORT  
 August 2021 Settlement Adjustment  
 January 10, 2022

Settlement Adjustment – Market Withdrawals Delta Analysis

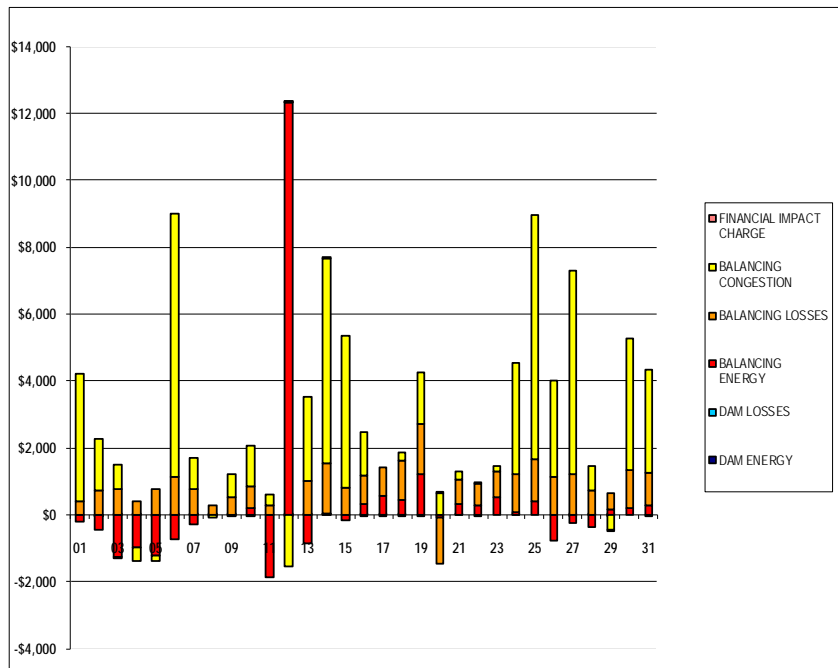
	MONDAY	TUESDAY	WEDNESDAY	THURSDAY	FRIDAY	SATURDAY	SUNDAY
DAM NYCA							1
DAM NON-NYCA							0
DAM WHEELS							0
DAM VIRTUAL							0
BALANCING NYCA							(104)
BALANCING NON-NYCA							0
BALANCING WHEELS							0
BALANCING VIRTUAL							0
UFE/LOSSES							(4)
DAM NYCA	2	3	4	5	6	7	8
DAM NON-NYCA	0	0	0	0	0	0	0
DAM WHEELS	0	0	0	0	0	0	0
DAM VIRTUAL	0	0	0	0	0	0	0
BALANCING NYCA	(25)	(84)	(23)	(125)	(157)	(211)	(217)
BALANCING NON-NYCA	0	0	0	0	0	0	0
BALANCING WHEELS	0	0	0	0	0	0	0
BALANCING VIRTUAL	0	0	0	0	0	0	0
UFE/LOSSES	(16)	(47)	(32)	(29)	(24)	(7)	5
DAM NYCA	9	10	11	12	13	14	15
DAM NON-NYCA	0	0	0	0	0	0	0
DAM WHEELS	0	0	0	0	0	0	0
DAM VIRTUAL	0	0	0	0	0	0	0
BALANCING NYCA	(154)	(264)	(159)	0	67	(299)	(234)
BALANCING NON-NYCA	0	0	0	0	0	0	0
BALANCING WHEELS	0	0	0	0	0	0	0
BALANCING VIRTUAL	0	0	0	0	0	0	0
UFE/LOSSES	(1)	6	77	0	24	(1)	(6)
DAM NYCA	16	17	18	19	20	21	22
DAM NON-NYCA	0	0	0	0	0	0	0
DAM WHEELS	0	0	0	0	0	0	0
DAM VIRTUAL	0	0	0	0	0	0	0
BALANCING NYCA	(241)	(162)	(166)	(203)	(147)	(181)	(155)
BALANCING NON-NYCA	0	0	0	0	0	0	0
BALANCING WHEELS	0	0	0	0	0	0	0
BALANCING VIRTUAL	0	0	0	0	0	0	0
UFE/LOSSES	8	12	8	24	(0)	8	8
DAM NYCA	23	24	25	26	27	28	29
DAM NON-NYCA	0	0	0	0	0	0	0
DAM WHEELS	0	0	0	0	0	0	0
DAM VIRTUAL	0	0	0	0	0	0	0
BALANCING NYCA	(199)	(213)	(248)	(156)	0	(96)	(95)
BALANCING NON-NYCA	0	0	0	0	0	0	0
BALANCING WHEELS	0	0	0	0	0	0	0
BALANCING VIRTUAL	0	0	0	0	0	0	0
UFE/LOSSES	12	10	103	84	73	(9)	5
DAM NYCA	30	31					
DAM NON-NYCA	0	0					
DAM WHEELS	0	0					
DAM VIRTUAL	0	0					
BALANCING NYCA	(184)	(127)					
BALANCING NON-NYCA	0	0					
BALANCING WHEELS	0	0					
BALANCING VIRTUAL	0	0					
UFE/LOSSES	11	9					



SETTLEMENTS REPORT  
 August 2021 Settlement Adjustment  
 January 10, 2022

Settlement Adjustment – Market Residuals Delta Analysis

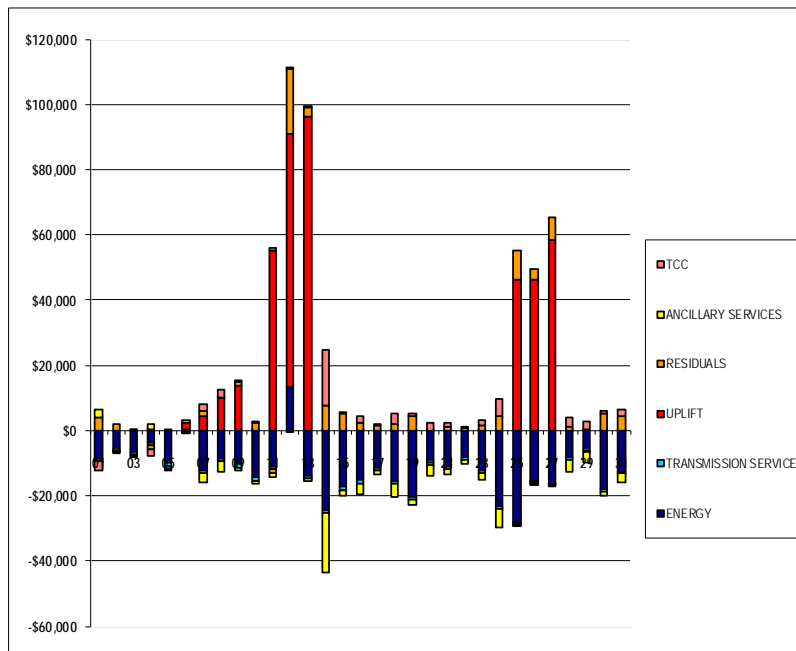
	MONDAY	TUESDAY	WEDNESDAY	THURSDAY	FRIDAY	SATURDAY	SUNDAY
DAM ENERGY							1
DAM LOSSES							\$0.00
BALANCING ENERGY							(\$223.09)
BALANCING LOSSES							\$404.05
BALANCING CONGESTION							\$3,800.05
FINANCIAL IMPACT CHARGE							\$0.00
	2	3	4	5	6	7	8
DAM ENERGY	(\$0.01)	\$0.00	\$0.01	\$0.00	\$0.01	\$0.01	\$0.01
DAM LOSSES	(\$0.01)	\$0.01	\$0.00	(\$0.01)	\$0.00	\$0.00	\$0.00
BALANCING ENERGY	(\$465.03)	(\$1,257.55)	(\$970.98)	(\$1,229.54)	(\$753.18)	(\$273.45)	(\$16.41)
BALANCING LOSSES	\$708.87	\$744.70	\$389.22	\$766.88	\$1,116.89	\$770.64	\$264.39
BALANCING CONGESTION	\$1,551.16	\$757.76	(\$429.11)	(\$169.19)	\$7,890.00	\$934.89	(\$90.64)
FINANCIAL IMPACT CHARGE	\$0.00	(\$0.07)	\$0.00	\$0.00	\$0.00	\$0.00	\$0.00
	9	10	11	12	13	14	15
DAM ENERGY	\$0.01	\$0.00	\$0.00	(\$0.01)	\$0.01	\$0.01	\$0.00
DAM LOSSES	\$0.00	(\$0.01)	\$0.00	\$0.01	\$0.00	\$0.00	\$0.00
BALANCING ENERGY	(\$4.97)	\$200.68	(\$1,875.80)	\$12,321.00	(\$860.78)	\$18.21	(\$178.12)
BALANCING LOSSES	\$527.87	\$654.51	\$287.15	\$15.68	\$1,011.87	\$1,500.28	\$823.73
BALANCING CONGESTION	\$681.08	\$1,210.56	\$332.56	(\$1,533.39)	\$2,515.30	\$6,120.27	\$4,530.59
FINANCIAL IMPACT CHARGE	\$0.00	\$0.00	\$0.00	\$0.04	\$0.00	\$0.07	\$0.00
	16	17	18	19	20	21	22
DAM ENERGY	(\$0.01)	\$0.00	\$0.01	\$0.00	\$0.00	\$0.01	\$0.00
DAM LOSSES	\$0.01	\$0.01	\$0.00	\$0.00	(\$0.01)	\$0.00	(\$0.01)
BALANCING ENERGY	\$311.28	\$566.99	\$455.36	\$1,223.59	(\$99.31)	\$327.58	\$277.39
BALANCING LOSSES	\$869.23	\$852.70	\$1,174.69	\$1,497.99	(\$1,347.50)	\$721.39	\$632.32
BALANCING CONGESTION	\$1,290.20	(\$29.63)	\$218.78	\$1,532.38	\$631.00	\$259.78	\$34.10
FINANCIAL IMPACT CHARGE	\$0.00	\$0.00	(\$0.01)	(\$0.04)	\$0.01	\$0.00	\$0.00
	23	24	25	26	27	28	29
DAM ENERGY	\$0.00	\$0.01	\$0.00	\$0.00	(\$0.01)	\$0.00	(\$0.01)
DAM LOSSES	\$0.00	\$0.00	\$0.00	\$0.00	\$0.01	\$0.01	\$0.01
BALANCING ENERGY	\$531.08	\$59.44	\$396.94	(\$787.88)	(\$231.85)	(\$356.29)	\$149.53
BALANCING LOSSES	\$758.79	\$1,149.97	\$1,269.99	\$1,144.54	\$1,197.14	\$730.66	\$511.32
BALANCING CONGESTION	\$180.06	\$3,306.97	\$7,272.03	\$2,875.65	\$6,095.71	\$726.40	(\$441.73)
FINANCIAL IMPACT CHARGE	\$0.00	\$0.00	\$0.00	\$0.00	\$0.00	\$0.00	(\$0.01)
	30	31					
DAM ENERGY	\$0.00	\$0.00					
DAM LOSSES	\$0.00	(\$0.01)					
BALANCING ENERGY	\$214.38	\$295.17					
BALANCING LOSSES	\$1,136.54	\$936.14					
BALANCING CONGESTION	\$3,931.35	\$3,117.83					
FINANCIAL IMPACT CHARGE	\$0.00	\$0.00					



SETTLEMENTS REPORT  
 August 2021 Settlement Adjustment  
 January 10, 2022

**Settlement Adjustment – Market Costs Delta Analysis**

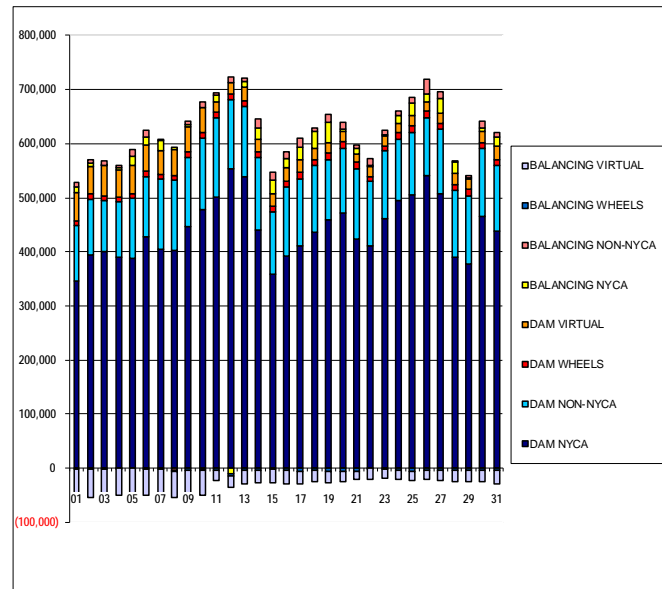
	MONDAY	TUESDAY	WEDNESDAY	THURSDAY	FRIDAY	SATURDAY	SUNDAY
ENERGY							1 (\$8,493.49)
TRANSMISSION SERVICE							(\$1,072.22)
UPLIFT							(\$0.43)
RESIDUALS							\$3,981.01
ANCILLARY SERVICES							\$2,395.56
TCC							(\$2,674.61)
	2	3	4	5	6	7	8
ENERGY	(\$5,340.52)	(\$6,382.80)	(\$3,680.43)	(\$9,841.62)	\$0.00	(\$12,250.61)	(\$8,431.56)
TRANSMISSION SERVICE	(\$774.60)	(\$830.72)	(\$868.63)	(\$1,165.59)	\$435.00	(\$966.55)	(\$1,151.77)
UPLIFT	(\$9.39)	\$10.98	\$163.84	(\$8.52)	\$1,906.25	\$4,555.89	\$10,091.62
RESIDUALS	\$1,794.98	\$244.85	(\$1,010.86)	(\$631.86)	\$756.00	\$1,432.09	\$157.35
ANCILLARY SERVICES	(\$261.31)	(\$694.09)	\$1,873.20	(\$647.58)	(\$321.56)	(\$2,769.31)	(\$2,907.30)
TCC	(\$368.93)	(\$12.22)	(\$2,309.35)	\$52.46	(\$19.26)	\$2,218.07	\$2,108.66
	9	10	11	12	13	14	15
ENERGY	(\$10,391.42)	(\$14,418.16)	(\$10,938.58)	\$13,543.00	(\$14,037.65)	(\$24,301.07)	(\$16,958.17)
TRANSMISSION SERVICE	(\$903.55)	(\$951.56)	(\$844.38)	(\$387.16)	(\$667.94)	(\$988.00)	(\$1,525.97)
UPLIFT	\$13,640.05	\$124.12	\$55,131.51	\$77,479.23	\$96,365.76	\$53.45	(\$22.94)
RESIDUALS	\$1,203.99	\$2,065.74	(\$1,256.09)	\$19,876.00	\$2,666.40	\$7,638.84	\$5,176.20
ANCILLARY SERVICES	(\$1,013.16)	(\$890.96)	(\$1,282.90)	\$81.52	(\$740.30)	(\$18,119.13)	(\$1,586.43)
TCC	\$357.43	\$119.48	\$675.48	\$399.93	\$178.98	\$17,074.48	\$302.99
	16	17	18	19	20	21	22
ENERGY	(\$15,060.69)	(\$11,513.66)	(\$15,588.20)	(\$20,365.34)	(\$9,193.54)	(\$10,908.72)	(\$8,303.86)
TRANSMISSION SERVICE	(\$1,346.13)	(\$872.17)	(\$881.09)	(\$792.86)	(\$775.56)	(\$943.04)	(\$844.90)
UPLIFT	\$32.32	\$16.20	\$4.14	\$12.85	\$6.83	\$26.96	(\$1.53)
RESIDUALS	\$2,470.71	\$1,390.07	\$1,848.83	\$4,253.92	(\$815.81)	\$1,308.76	\$943.80
ANCILLARY SERVICES	(\$2,986.73)	(\$1,045.85)	(\$3,943.75)	(\$1,496.51)	(\$2,931.44)	(\$1,653.54)	(\$908.37)
TCC	\$1,939.85	\$468.13	\$3,308.00	\$838.06	\$2,398.81	\$920.92	\$229.91
	23	24	25	26	27	28	29
ENERGY	(\$12,131.94)	(\$23,089.21)	(\$28,033.12)	(\$15,520.85)	(\$16,154.80)	(\$8,317.96)	(\$5,364.10)
TRANSMISSION SERVICE	(\$834.58)	(\$798.43)	(\$291.68)	(\$439.55)	(\$360.44)	(\$824.02)	(\$913.69)
UPLIFT	\$15.30	(\$11.20)	\$46,446.34	\$46,379.33	\$58,267.35	\$5.93	(\$332.83)
RESIDUALS	\$1,469.93	\$4,516.39	\$8,938.96	\$3,232.31	\$7,061.00	\$1,100.78	\$219.11
ANCILLARY SERVICES	(\$2,245.29)	(\$5,810.92)	(\$658.96)	(\$389.01)	(\$233.89)	(\$3,626.75)	(\$3,296.94)
TCC	\$1,579.96	\$4,994.80	(\$116.90)	(\$106.88)	(\$396.89)	\$2,851.91	\$2,608.26
	30	31					
ENERGY	(\$17,861.78)	(\$12,677.92)					
TRANSMISSION SERVICE	(\$765.66)	(\$560.37)					
UPLIFT	\$108.55	\$29.47					
RESIDUALS	\$5,282.27	\$4,349.13					
ANCILLARY SERVICES	(\$1,162.75)	(\$2,633.91)					
TCC	\$582.00	\$2,143.92					



SETTLEMENTS REPORT  
 August 2021 Settlement Adjustment  
 January 10, 2022

Initial Settlement – Market Supply Analysis

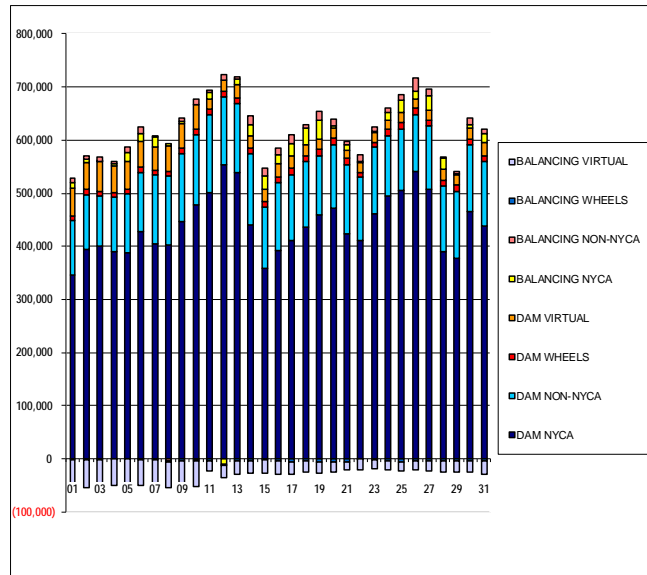
	MONDAY	TUESDAY	WEDNESDAY	THURSDAY	FRIDAY	SATURDAY	SUNDAY
							1
DAM NYCA							346,278
DAM NON-NYCA							101,582
DAM WHEELS							8,673
DAM VIRTUAL							53,710
BALANCING NYCA							10,914
BALANCING NON-NYCA							7,133
BALANCING WHEELS							(2,161)
BALANCING VIRTUAL							(53,710)
	2	3	4	5	6	7	8
DAM NYCA	395,256	400,280	390,495	387,818	427,123	404,986	402,088
DAM NON-NYCA	102,580	95,680	102,911	111,799	112,536	129,784	129,898
DAM WHEELS	8,909	8,111	7,315	7,469	9,189	9,103	9,890
DAM VIRTUAL	52,136	55,518	49,828	53,424	47,964	43,635	47,135
BALANCING NYCA	5,441	910	5,468	16,900	15,504	18,490	4,579
BALANCING NON-NYCA	5,495	8,078	4,534	10,959	13,208	2,358	(4,036)
BALANCING WHEELS	(1,709)	(1,513)	(327)	(269)	(1,989)	(1,903)	(2,690)
BALANCING VIRTUAL	(52,136)	(55,518)	(49,828)	(53,424)	(47,964)	(43,635)	(47,135)
	9	10	11	12	13	14	15
DAM NYCA	446,135	478,180	502,215	553,329	539,720	440,371	359,012
DAM NON-NYCA	128,005	131,988	145,315	127,503	129,162	134,004	115,627
DAM WHEELS	11,217	10,680	10,708	11,138	10,207	10,483	8,980
DAM VIRTUAL	46,419	46,644	18,863	21,089	25,907	23,151	24,867
BALANCING NYCA	2,903	(813)	13,051	(9,310)	10,284	21,796	25,213
BALANCING NON-NYCA	7,520	10,455	4,508	10,124	5,159	16,546	13,293
BALANCING WHEELS	(3,917)	(3,480)	(3,526)	(4,028)	(3,007)	(3,283)	(1,780)
BALANCING VIRTUAL	(46,419)	(46,644)	(18,863)	(21,089)	(25,907)	(23,151)	(24,867)
	16	17	18	19	20	21	22
DAM NYCA	392,461	410,246	436,744	459,849	472,520	423,440	411,250
DAM NON-NYCA	126,963	124,280	122,212	109,764	119,185	129,607	119,902
DAM WHEELS	11,312	12,264	11,960	13,228	12,428	12,644	7,200
DAM VIRTUAL	25,893	23,900	20,637	20,027	19,324	14,847	20,307
BALANCING NYCA	15,820	21,979	30,564	35,795	4,159	10,262	1,530
BALANCING NON-NYCA	13,002	18,223	6,111	14,733	11,430	7,878	12,956
BALANCING WHEELS	(4,112)	(5,111)	(4,760)	(6,028)	(5,128)	(5,444)	(150)
BALANCING VIRTUAL	(25,893)	(23,900)	(20,637)	(20,027)	(19,324)	(14,847)	(20,307)
	23	24	25	26	27	28	29
DAM NYCA	461,206	495,095	505,766	540,541	507,267	389,513	378,440
DAM NON-NYCA	126,615	113,635	115,518	107,373	119,869	124,828	125,551
DAM WHEELS	8,319	12,369	12,512	11,702	11,307	10,771	10,955
DAM VIRTUAL	18,485	16,125	17,783	16,909	18,861	20,426	20,491
BALANCING NYCA	1,569	14,406	23,340	16,203	26,847	20,841	2,094
BALANCING NON-NYCA	8,709	9,175	10,128	25,586	12,745	2,458	3,186
BALANCING WHEELS	(1,020)	(3,695)	(5,161)	(3,689)	(4,107)	(3,571)	(3,707)
BALANCING VIRTUAL	(18,485)	(16,125)	(17,783)	(16,909)	(18,861)	(20,426)	(20,491)
	30	31					
DAM NYCA	464,875	438,570					
DAM NON-NYCA	126,120	121,202					
DAM WHEELS	10,168	10,844					
DAM VIRTUAL	21,826	25,108					
BALANCING NYCA	6,868	16,423					
BALANCING NON-NYCA	11,882	8,559					
BALANCING WHEELS	(2,982)	(3,544)					
BALANCING VIRTUAL	(21,826)	(25,108)					



SETTLEMENTS REPORT  
 August 2021 Settlement Adjustment  
 January 10, 2022

4-Month Settlement Adjustment – Market Supply Analysis

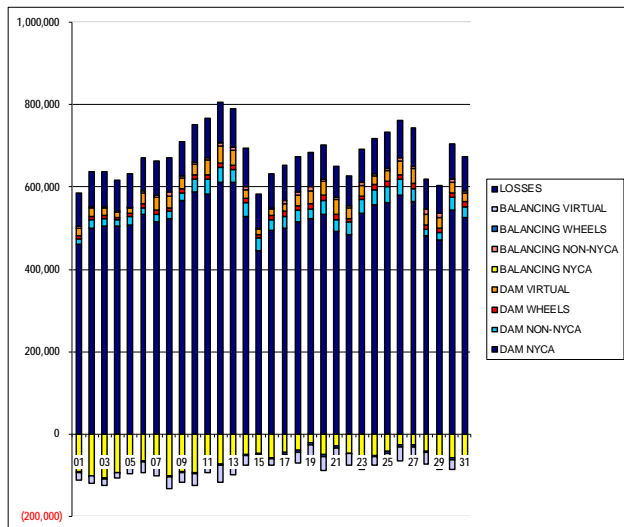
	MONDAY	TUESDAY	WEDNESDAY	THURSDAY	FRIDAY	SATURDAY	SUNDAY
							1
DAM NYCA							346,278
DAM NON-NYCA							101,582
DAM WHEELS							8,673
DAM VIRTUAL							53,710
BALANCING NYCA							10,807
BALANCING NON-NYCA							7,133
BALANCING WHEELS							(2,161)
BALANCING VIRTUAL							(53,710)
	2	3	4	5	6	7	8
DAM NYCA	395,256	400,280	390,495	387,818	427,123	404,986	402,088
DAM NON-NYCA	102,580	95,680	102,911	111,799	112,536	129,784	129,898
DAM WHEELS	8,909	8,111	7,315	7,469	9,189	9,103	9,890
DAM VIRTUAL	52,136	55,518	49,828	53,424	47,964	43,635	47,135
BALANCING NYCA	5,400	779	5,412	16,746	15,324	18,272	4,367
BALANCING NON-NYCA	5,495	8,078	4,534	10,959	13,208	2,358	(4,036)
BALANCING WHEELS	(1,709)	(1,513)	(327)	(269)	(1,989)	(1,903)	(2,690)
BALANCING VIRTUAL	(52,136)	(55,518)	(49,828)	(53,424)	(47,964)	(43,635)	(47,135)
	9	10	11	12	13	14	15
DAM NYCA	446,135	478,180	502,215	553,329	539,720	440,371	359,012
DAM NON-NYCA	128,005	131,988	145,315	127,503	129,162	134,004	115,627
DAM WHEELS	11,217	10,680	10,708	11,138	10,207	10,483	8,980
DAM VIRTUAL	46,419	46,644	18,863	21,089	25,907	23,151	24,867
BALANCING NYCA	2,747	(1,072)	12,859	(9,153)	10,075	21,507	24,972
BALANCING NON-NYCA	7,520	10,455	4,508	10,124	5,159	16,546	13,293
BALANCING WHEELS	(3,917)	(3,480)	(3,526)	(4,028)	(3,007)	(3,283)	(1,780)
BALANCING VIRTUAL	(46,419)	(46,644)	(18,863)	(21,089)	(25,907)	(23,151)	(24,867)
	16	17	18	19	20	21	22
DAM NYCA	392,461	410,246	436,744	459,849	472,520	423,440	411,250
DAM NON-NYCA	126,963	124,280	122,212	109,764	119,185	129,607	119,902
DAM WHEELS	11,312	12,264	11,960	13,228	12,428	12,644	7,200
DAM VIRTUAL	25,893	23,900	20,637	20,027	19,324	14,847	20,307
BALANCING NYCA	15,587	21,830	30,406	35,616	4,012	10,089	1,383
BALANCING NON-NYCA	13,002	18,223	6,111	14,733	11,430	7,878	12,956
BALANCING WHEELS	(4,112)	(5,111)	(4,760)	(6,028)	(5,128)	(5,444)	(150)
BALANCING VIRTUAL	(25,893)	(23,900)	(20,637)	(20,027)	(19,324)	(14,847)	(20,307)
	23	24	25	26	27	28	29
DAM NYCA	461,206	495,095	505,766	540,541	507,267	389,513	378,440
DAM NON-NYCA	126,615	113,635	115,518	107,373	119,869	124,828	125,551
DAM WHEELS	8,319	12,369	12,512	11,702	11,307	10,771	10,955
DAM VIRTUAL	18,485	16,125	17,783	16,909	18,861	20,426	20,491
BALANCING NYCA	1,382	14,202	23,102	16,039	26,685	20,735	2,004
BALANCING NON-NYCA	8,709	9,175	10,128	25,586	12,745	2,458	3,186
BALANCING WHEELS	(1,020)	(3,695)	(5,161)	(3,689)	(4,107)	(3,571)	(3,707)
BALANCING VIRTUAL	(18,485)	(16,125)	(17,783)	(16,909)	(18,861)	(20,426)	(20,491)
	30	31					
DAM NYCA	464,875	438,570					
DAM NON-NYCA	126,120	121,202					
DAM WHEELS	10,168	10,844					
DAM VIRTUAL	21,826	25,108					
BALANCING NYCA	6,693	16,305					
BALANCING NON-NYCA	11,882	8,559					
BALANCING WHEELS	(2,982)	(3,544)					
BALANCING VIRTUAL	(21,826)	(25,108)					



SETTLEMENTS REPORT  
 August 2021 Settlement Adjustment  
 January 10, 2022

Initial Settlement – Market Withdrawals Analysis

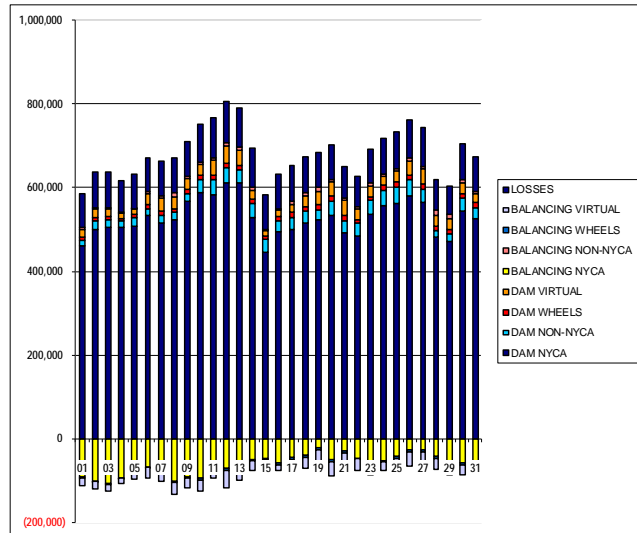
	MONDAY	TUESDAY	WEDNESDAY	THURSDAY	FRIDAY	SATURDAY	SUNDAY
							1
DAM NYCA							460,595
DAM NON-NYCA							13,442
DAM WHEELS							8,673
DAM VIRTUAL							17,198
BALANCING NYCA							(92,481)
BALANCING NON-NYCA							5,117
BALANCING WHEELS							(2,161)
BALANCING VIRTUAL							(17,198)
UFE/LOSSES							79,235
	2	3	4	5	6	7	8
DAM NYCA	500,795	503,974	505,832	507,750	533,394	516,630	522,110
DAM NON-NYCA	19,876	19,580	13,892	20,873	16,089	17,503	18,301
DAM WHEELS	8,909	8,111	7,315	7,469	9,189	9,103	9,890
DAM VIRTUAL	18,344	17,147	12,677	13,583	26,394	32,672	27,108
BALANCING NYCA	(100,931)	(106,925)	(93,542)	(82,708)	(66,176)	(66,893)	(101,930)
BALANCING NON-NYCA	4,089	3,938	1,741	522	4,381	4,888	10,224
BALANCING WHEELS	(1,709)	(1,513)	(327)	(269)	(1,989)	(1,903)	(2,690)
BALANCING VIRTUAL	(18,344)	(17,147)	(12,677)	(13,583)	(26,394)	(32,672)	(27,108)
UFE/LOSSES	84,942	84,380	75,485	81,038	81,282	83,492	83,825
	9	10	11	12	13	14	15
DAM NYCA	566,820	587,714	584,135	611,415	610,218	528,238	445,788
DAM NON-NYCA	18,932	30,432	35,938	36,027	31,466	32,911	30,416
DAM WHEELS	11,217	10,680	10,708	11,138	10,207	10,483	8,980
DAM VIRTUAL	23,724	26,962	34,104	40,284	38,554	22,374	11,975
BALANCING NYCA	(90,717)	(94,259)	(57,134)	(72,215)	(56,978)	(49,091)	(47,464)
BALANCING NON-NYCA	7,193	3,953	5,813	7,313	5,253	7,773	2,911
BALANCING WHEELS	(3,917)	(3,480)	(3,526)	(4,028)	(3,007)	(3,283)	(1,780)
BALANCING VIRTUAL	(23,724)	(26,962)	(34,104)	(40,284)	(38,554)	(22,374)	(11,975)
UFE/LOSSES	82,334	91,970	96,338	99,106	94,367	92,886	81,495
	16	17	18	19	20	21	22
DAM NYCA	493,738	499,073	516,268	524,419	534,824	492,017	485,090
DAM NON-NYCA	26,591	28,809	26,976	22,264	32,192	29,764	29,700
DAM WHEELS	11,312	12,264	11,960	13,228	12,428	12,644	7,200
DAM VIRTUAL	14,043	20,419	25,772	29,988	33,337	36,051	26,972
BALANCING NYCA	(57,498)	(45,472)	(39,048)	(20,528)	(49,170)	(29,408)	(47,790)
BALANCING NON-NYCA	2,591	5,611	6,073	10,670	5,515	3,510	5,149
BALANCING WHEELS	(4,112)	(5,111)	(4,740)	(6,020)	(5,120)	(5,440)	(1,509)
BALANCING VIRTUAL	(14,043)	(20,419)	(25,772)	(29,988)	(33,337)	(36,051)	(26,972)
UFE/LOSSES	82,823	86,708	85,363	83,317	83,933	75,305	73,489
	23	24	25	26	27	28	29
DAM NYCA	537,208	556,112	563,258	580,359	564,938	481,583	471,490
DAM NON-NYCA	31,523	37,489	38,622	37,767	31,427	15,190	17,829
DAM WHEELS	8,319	12,369	12,512	11,702	11,307	10,771	10,955
DAM VIRTUAL	27,105	29,886	24,791	34,218	37,620	27,260	25,249
BALANCING NYCA	(58,700)	(51,811)	(42,222)	(26,930)	(26,886)	(42,525)	(57,374)
BALANCING NON-NYCA	8,247	4,872	4,866	6,956	5,768	11,903	10,845
BALANCING WHEELS	(1,020)	(3,695)	(5,161)	(3,689)	(4,107)	(3,571)	(3,707)
BALANCING VIRTUAL	(27,105)	(20,886)	(24,791)	(34,218)	(37,620)	(27,260)	(25,249)
UFE/LOSSES	79,820	85,648	90,227	91,552	91,481	71,489	66,481
	30	31					
DAM NYCA	544,983	526,383					
DAM NON-NYCA	31,311	28,380					
DAM WHEELS	10,168	10,844					
DAM VIRTUAL	25,446	21,398					
BALANCING NYCA	(58,692)	(56,309)					
BALANCING NON-NYCA	6,024	4,555					
BALANCING WHEELS	(2,982)	(3,544)					
BALANCING VIRTUAL	(25,446)	(21,398)					
UFE/LOSSES	86,120	83,744					



SETTLEMENTS REPORT  
 August 2021 Settlement Adjustment  
 January 10, 2022

4-Month Settlement Adjustment – Market Withdrawals Analysis

	MONDAY	TUESDAY	WEDNESDAY	THURSDAY	FRIDAY	SATURDAY	SUNDAY
							1
DAM NYCA							460,595
DAM NON-NYCA							13,442
DAM WHEELS							8,673
DAM VIRTUAL							17,198
BALANCING NYCA							(92,585)
BALANCING NON-NYCA							5,117
BALANCING WHEELS							(2,161)
BALANCING VIRTUAL							(17,196)
UFE/LOSSES							79,231
	2	3	4	5	6	7	8
DAM NYCA	500,795	503,974	505,832	507,750	533,394	516,630	522,110
DAM NON-NYCA	19,876	19,580	13,892	20,873	16,089	17,503	18,301
DAM WHEELS	8,909	8,111	7,215	7,469	9,189	9,103	9,890
DAM VIRTUAL	18,344	17,147	12,677	13,583	26,394	32,672	27,108
BALANCING NYCA	(100,956)	(107,009)	(93,565)	(82,833)	(66,933)	(67,105)	(102,147)
BALANCING NON-NYCA	4,089	3,938	1,741	522	4,381	4,888	10,224
BALANCING WHEELS	(1,709)	(1,513)	(327)	(269)	(1,989)	(1,903)	(2,690)
BALANCING VIRTUAL	(18,344)	(17,147)	(12,677)	(13,583)	(26,394)	(32,672)	(27,108)
UFE/LOSSES	84,927	84,334	75,453	81,009	81,258	83,485	83,830
	9	10	11	12	13	14	15
DAM NYCA	566,820	587,714	584,135	611,415	610,218	528,238	445,788
DAM NON-NYCA	18,932	30,432	35,938	36,027	31,466	32,911	30,416
DAM WHEELS	11,217	10,680	10,708	11,138	10,207	10,483	8,980
DAM VIRTUAL	23,724	26,962	34,104	40,284	38,554	22,374	11,975
BALANCING NYCA	(90,873)	(94,523)	(57,293)	(72,013)	(57,172)	(49,380)	(47,700)
BALANCING NON-NYCA	7,193	3,929	5,813	7,313	5,253	7,773	2,911
BALANCING WHEELS	(3,917)	(3,480)	(3,526)	(4,028)	(3,007)	(3,283)	(1,780)
BALANCING VIRTUAL	(23,724)	(26,962)	(34,104)	(40,284)	(38,554)	(22,374)	(11,975)
UFE/LOSSES	82,334	91,976	96,415	99,186	94,486	92,886	81,490
	16	17	18	19	20	21	22
DAM NYCA	493,738	499,073	516,268	524,419	534,824	492,017	485,090
DAM NON-NYCA	26,591	28,809	26,976	22,264	32,192	29,764	29,700
DAM WHEELS	11,312	12,264	11,960	13,228	12,428	12,644	7,200
DAM VIRTUAL	14,043	20,419	25,772	29,988	33,337	36,051	26,972
BALANCING NYCA	(57,739)	(45,634)	(39,214)	(20,731)	(49,317)	(29,589)	(47,945)
BALANCING NON-NYCA	2,591	5,611	6,073	10,670	5,515	3,510	5,149
BALANCING WHEELS	(4,112)	(5,111)	(4,760)	(6,028)	(5,128)	(5,444)	(150)
BALANCING VIRTUAL	(14,043)	(20,419)	(25,772)	(29,988)	(33,337)	(36,051)	(26,972)
UFE/LOSSES	82,831	86,720	85,371	83,340	83,933	75,313	73,497
	23	24	25	26	27	28	29
DAM NYCA	537,208	556,112	563,258	580,359	564,938	481,583	471,490
DAM NON-NYCA	31,523	37,489	38,622	37,767	31,427	15,190	17,829
DAM WHEELS	8,319	12,369	12,512	11,702	11,307	10,771	10,955
DAM VIRTUAL	27,105	20,886	24,791	34,218	37,620	27,260	25,249
BALANCING NYCA	(58,899)	(52,024)	(42,470)	(27,086)	(27,044)	(42,627)	(57,469)
BALANCING NON-NYCA	8,247	4,872	4,866	6,956	5,768	11,903	10,845
BALANCING WHEELS	(1,020)	(3,695)	(5,161)	(3,689)	(4,107)	(3,571)	(3,707)
BALANCING VIRTUAL	(27,105)	(20,886)	(24,791)	(34,218)	(37,620)	(27,260)	(25,249)
UFE/LOSSES	79,833	85,658	90,331	91,636	91,554	71,479	66,485
	30	31					
DAM NYCA	544,983	526,383					
DAM NON-NYCA	31,311	26,380					
DAM WHEELS	10,168	10,844					
DAM VIRTUAL	25,446	21,398					
BALANCING NYCA	(58,878)	(56,436)					
BALANCING NON-NYCA	6,024	4,555					
BALANCING WHEELS	(2,982)	(3,544)					
BALANCING VIRTUAL	(25,446)	(21,398)					
UFE/LOSSES	86,131	83,753					

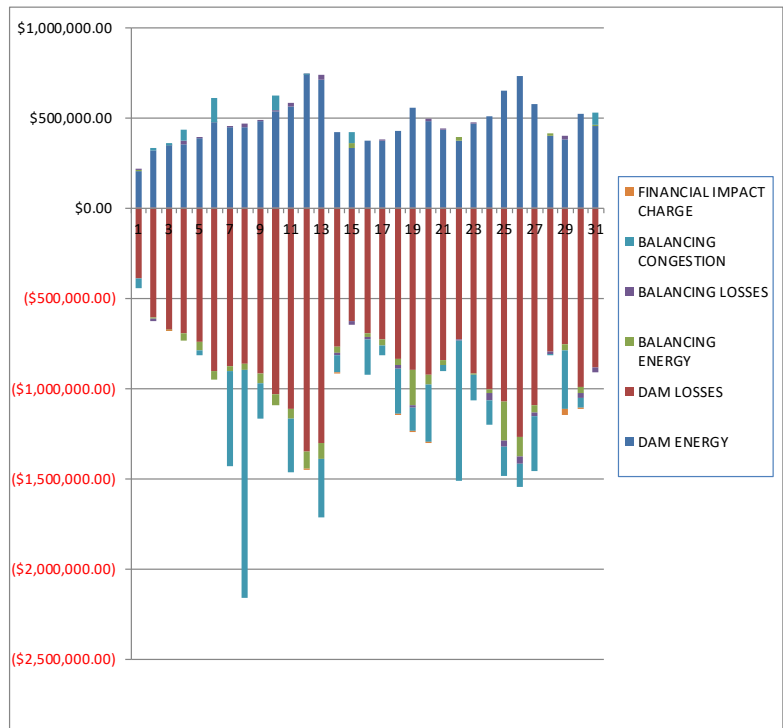




SETTLEMENTS REPORT  
August 2021 Settlement Adjustment  
January 10, 2022

Initial Settlement – Market Residuals Analysis

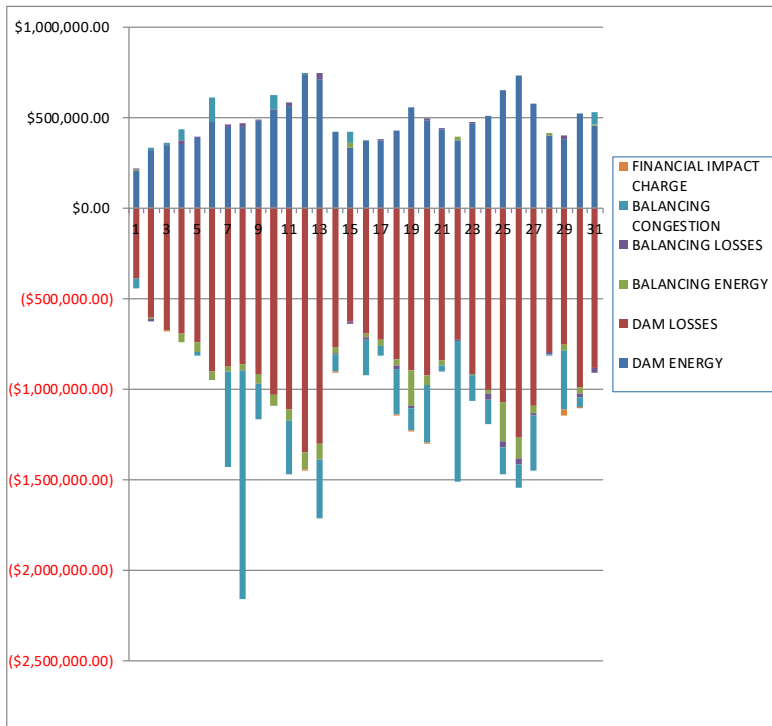
	MONDAY	TUESDAY	WEDNESDAY	THURSDAY	FRIDAY	SATURDAY	SUNDAY
							1
DAM ENERGY							\$208,601.19
DAM LOSSES							(\$391,543.15)
BALANCING ENERGY							\$1,264.24
BALANCING LOSSES							\$3,949.15
BALANCING CONGESTION							(\$53,302.51)
FINANCIAL IMPACT CHARGE							\$0.00
	2	3	4	5	6	7	8
DAM ENERGY	\$321,332.86	\$348,853.70	\$356,959.88	\$385,428.71	\$476,936.71	\$450,352.41	\$452,055.84
DAM LOSSES	(\$608,279.15)	(\$673,871.91)	(\$693,221.41)	(\$737,367.84)	(\$899,446.40)	(\$872,541.96)	(\$862,964.76)
BALANCING ENERGY	(\$4,769.68)	(\$980.22)	(\$43,220.15)	(\$53,307.33)	(\$51,789.88)	(\$32,844.59)	(\$31,969.27)
BALANCING LOSSES	(\$13,852.20)	\$19.08	\$16,761.02	\$5,952.76	\$319.78	\$8,314.35	\$17,489.57
BALANCING CONGESTION	\$13,404.65	\$10,274.96	\$60,093.10	(\$22,893.77)	\$132,673.80	(\$526,235.16)	(\$1,261,975.29)
FINANCIAL IMPACT CHARGE	\$0.00	(\$684.04)	\$0.00	\$0.00	\$0.00	\$0.00	\$0.00
	9	10	11	12	13	14	15
DAM ENERGY	\$483,541.24	\$540,474.89	\$566,751.20	\$737,896.38	\$715,642.55	\$420,925.50	\$333,432.39
DAM LOSSES	(\$915,868.03)	(\$1,029,638.31)	(\$1,111,610.85)	(\$1,349,473.56)	(\$1,298,626.54)	(\$768,238.42)	(\$628,920.28)
BALANCING ENERGY	(\$51,336.54)	(\$61,844.22)	(\$56,861.34)	(\$94,342.32)	(\$88,691.07)	(\$32,741.90)	\$25,554.21
BALANCING LOSSES	\$432.91	\$583.58	\$15,840.35	\$1,152.65	\$26,921.26	(\$11,120.39)	(\$14,076.40)
BALANCING CONGESTION	(\$202,065.62)	\$82,370.59	(\$298,776.22)	\$6,701.71	(\$330,076.35)	(\$95,513.02)	\$59,930.30
FINANCIAL IMPACT CHARGE	\$0.00	\$0.00	\$0.00	(\$169.97)	\$0.00	(\$3,121.77)	\$0.00
	16	17	18	19	20	21	22
DAM ENERGY	\$374,113.15	\$373,945.04	\$431,186.86	\$560,656.61	\$485,047.11	\$432,484.45	\$373,117.22
DAM LOSSES	(\$694,217.33)	(\$725,222.28)	(\$833,930.29)	(\$893,876.62)	(\$924,876.38)	(\$838,728.98)	(\$726,676.34)
BALANCING ENERGY	(\$21,611.56)	(\$38,660.77)	(\$36,304.64)	(\$201,144.92)	(\$50,424.11)	(\$33,103.47)	\$22,914.68
BALANCING LOSSES	(\$11,390.71)	\$7,542.83	(\$18,816.16)	(\$13,200.83)	\$10,931.33	\$6,198.55	(\$7,131.83)
BALANCING CONGESTION	(\$199,085.60)	(\$49,086.39)	(\$249,742.41)	(\$125,286.75)	(\$317,422.63)	(\$30,484.52)	(\$776,183.56)
FINANCIAL IMPACT CHARGE	\$0.00	\$0.00	(\$15.50)	(\$41.56)	(\$3,991.11)	\$0.00	\$0.00
	23	24	25	26	27	28	29
DAM ENERGY	\$472,554.15	\$507,127.00	\$649,899.98	\$730,274.96	\$578,302.40	\$400,275.71	\$383,430.70
DAM LOSSES	(\$915,397.31)	(\$1,006,238.22)	(\$1,068,609.93)	(\$1,266,085.60)	(\$1,093,645.74)	(\$796,742.09)	(\$752,660.43)
BALANCING ENERGY	(\$10,686.98)	(\$21,479.94)	(\$218,386.85)	(\$112,871.01)	(\$41,380.77)	\$14,246.51	(\$34,723.45)
BALANCING LOSSES	\$2,222.61	(\$34,852.50)	(\$38,011.24)	(\$37,981.89)	(\$14,926.23)	(\$12,444.02)	\$18,692.45
BALANCING CONGESTION	(\$136,731.30)	(\$136,292.26)	(\$156,058.07)	(\$128,304.22)	(\$309,979.70)	(\$3,117.05)	(\$324,158.56)
FINANCIAL IMPACT CHARGE	\$0.00	\$0.00	\$0.00	\$0.00	\$0.00	\$0.00	(\$32,335.26)
	30	31					
DAM ENERGY	\$520,929.15	\$453,951.39					
DAM LOSSES	(\$987,641.52)	(\$884,738.32)					
BALANCING ENERGY	(\$35,724.64)	\$9,038.50					
BALANCING LOSSES	(\$24,974.38)	(\$24,884.73)					
BALANCING CONGESTION	(\$54,972.79)	\$65,096.46					
FINANCIAL IMPACT CHARGE	(\$0.47)	\$0.00					



SETTLEMENTS REPORT  
 August 2021 Settlement Adjustment  
 January 10, 2022

4-Month Settlement Adjustment – Market Residuals Analysis

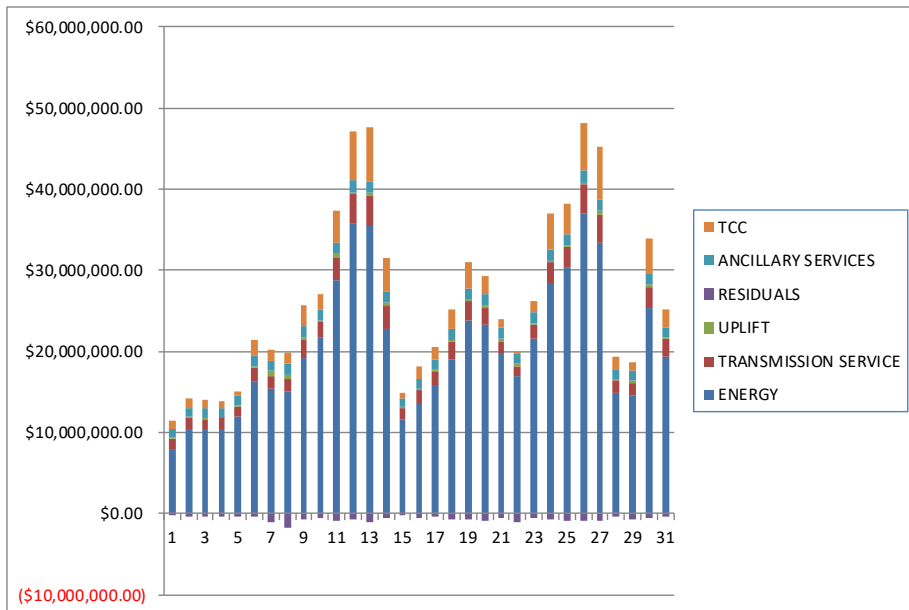
	MONDAY	TUESDAY	WEDNESDAY	THURSDAY	FRIDAY	SATURDAY	SUNDAY
							1
DAM ENERGY							\$208,601.19
DAM LOSSES							(\$391,543.15)
BALANCING ENERGY							\$1,041.15
BALANCING LOSSES							\$4,353.20
BALANCING CONGESTION							(\$49,502.46)
FINANCIAL IMPACT CHARGE							\$0.00
	2	3	4	5	6	7	8
DAM ENERGY	\$321,332.85	\$348,853.70	\$356,959.89	\$385,428.71	\$476,936.72	\$450,352.42	\$452,055.85
DAM LOSSES	(\$608,279.16)	(\$673,871.90)	(\$693,221.41)	(\$737,367.85)	(\$899,446.44)	(\$872,541.96)	(\$862,964.76)
BALANCING ENERGY	(\$5,234.71)	(\$2,237.77)	(\$44,191.13)	(\$54,536.87)	(\$52,543.06)	(\$33,118.04)	(\$31,985.68)
BALANCING LOSSES	(\$13,143.33)	\$763.78	\$17,150.24	\$6,719.64	\$1,436.67	\$9,084.99	\$17,753.96
BALANCING CONGESTION	\$14,955.81	\$11,032.72	\$59,663.99	(\$23,062.96)	\$134,198.27	(\$525,300.27)	(\$1,262,065.93)
FINANCIAL IMPACT CHARGE	\$0.00	(\$684.11)	\$0.00	\$0.00	\$0.00	\$0.00	\$0.00
	9	10	11	12	13	14	15
DAM ENERGY	\$483,541.25	\$540,474.89	\$566,751.20	\$737,896.37	\$715,642.56	\$420,925.51	\$333,432.39
DAM LOSSES	(\$915,868.03)	(\$1,029,638.32)	(\$1,111,610.85)	(\$1,349,473.55)	(\$1,298,626.54)	(\$768,238.42)	(\$628,920.28)
BALANCING ENERGY	(\$51,341.51)	(\$61,643.54)	(\$58,737.14)	(\$96,576.14)	(\$89,551.85)	(\$32,723.69)	\$25,376.09
BALANCING LOSSES	\$960.78	\$1,238.09	\$16,127.50	\$1,168.33	\$27,933.13	(\$9,620.11)	(\$13,252.67)
BALANCING CONGESTION	(\$201,384.54)	\$83,581.15	(\$298,443.66)	\$5,768.32	(\$327,561.05)	(\$89,392.75)	\$64,460.89
FINANCIAL IMPACT CHARGE	\$0.00	\$0.00	\$0.00	(\$169.93)	\$0.00	(\$3,121.70)	\$0.00
	16	17	18	19	20	21	22
DAM ENERGY	\$374,113.14	\$373,945.04	\$431,186.87	\$560,656.61	\$485,047.11	\$432,484.46	\$373,117.22
DAM LOSSES	(\$694,217.32)	(\$725,222.27)	(\$833,930.29)	(\$893,876.82)	(\$924,876.39)	(\$838,728.98)	(\$726,676.35)
BALANCING ENERGY	(\$21,300.28)	(\$38,093.78)	(\$35,849.28)	(\$199,921.33)	(\$50,523.42)	(\$32,775.89)	\$23,192.07
BALANCING LOSSES	(\$10,521.48)	\$8,395.53	(\$17,641.47)	(\$11,702.84)	\$9,583.83	\$6,919.94	(\$6,499.51)
BALANCING CONGESTION	(\$197,795.40)	(\$49,116.02)	(\$249,523.63)	(\$123,754.37)	(\$316,791.63)	(\$30,224.74)	(\$776,149.46)
FINANCIAL IMPACT CHARGE	\$0.00	\$0.00	(\$15.51)	(\$41.60)	(\$3,991.10)	\$0.00	\$0.00
	23	24	25	26	27	28	29
DAM ENERGY	\$472,554.15	\$507,127.01	\$649,899.98	\$730,274.96	\$578,302.39	\$400,275.71	\$383,430.69
DAM LOSSES	(\$915,397.31)	(\$1,006,238.22)	(\$1,068,609.93)	(\$1,266,085.60)	(\$1,093,645.73)	(\$796,742.08)	(\$752,660.42)
BALANCING ENERGY	(\$10,155.90)	(\$21,420.50)	(\$217,989.91)	(\$113,658.89)	(\$41,612.62)	\$13,890.22	(\$34,573.92)
BALANCING LOSSES	\$2,981.40	(\$33,702.53)	(\$36,741.25)	(\$36,837.35)	(\$13,729.09)	(\$11,713.36)	\$19,203.77
BALANCING CONGESTION	(\$136,551.24)	(\$132,985.29)	(\$148,786.04)	(\$125,428.57)	(\$303,883.99)	(\$2,390.65)	(\$324,600.29)
FINANCIAL IMPACT CHARGE	\$0.00	\$0.00	\$0.00	\$0.00	\$0.00	\$0.00	(\$32,335.27)
	30	31					
DAM ENERGY	\$520,929.15	\$453,951.39					
DAM LOSSES	(\$987,641.52)	(\$884,738.33)					
BALANCING ENERGY	(\$35,510.26)	\$9,333.67					
BALANCING LOSSES	(\$23,837.84)	(\$23,948.59)					
BALANCING CONGESTION	(\$51,041.44)	\$68,214.29					
FINANCIAL IMPACT CHARGE	(\$0.47)	\$0.00					



SETTLEMENTS REPORT  
August 2021 Settlement Adjustment  
January 10, 2022

Initial Settlement – Market Costs Analysis

	MONDAY	TUESDAY	WEDNESDAY	THURSDAY	FRIDAY	SATURDAY	SUNDAY
ENERGY							1
TRANSMISSION SERVICE							\$7,863,690.16
UPLIFT							\$1,393,945.75
RESIDUALS							\$92,776.01
ANCILLARY SERVICES							(\$231,031.08)
TCC							\$1,039,317.83
							\$1,079,803.97
	2	3	4	5	6	7	8
ENERGY	\$10,424,393.49	\$10,437,880.05	\$10,438,099.38	\$11,986,973.52	\$16,303,264.95	\$15,328,632.22	\$15,046,874.49
TRANSMISSION SERVICE	\$1,338,001.81	\$1,271,600.26	\$1,289,212.70	\$1,251,781.98	\$1,663,511.49	\$1,570,735.99	\$1,544,382.28
UPLIFT	\$131,338.85	\$94,630.29	\$111,150.30	\$125,342.24	\$249,557.14	\$684,043.46	\$600,827.23
RESIDUALS	(\$292,163.52)	(\$316,388.43)	(\$302,627.56)	(\$422,187.47)	(\$341,306.03)	(\$972,954.95)	(\$1,687,363.91)
ANCILLARY SERVICES	\$1,165,030.50	\$1,156,019.02	\$1,159,555.62	\$1,183,595.50	\$1,293,315.69	\$1,275,274.59	\$1,226,031.05
TCC	\$1,189,468.89	\$994,618.92	\$798,443.39	\$536,219.42	\$1,915,275.29	\$1,386,855.24	\$1,473,383.36
	9	10	11	12	13	14	15
ENERGY	\$19,235,747.64	\$21,755,792.62	\$28,847,317.81	\$35,753,524.62	\$35,413,475.69	\$22,767,405.23	\$11,609,286.68
TRANSMISSION SERVICE	\$2,214,869.50	\$1,805,548.05	\$2,724,440.24	\$3,679,477.80	\$3,889,159.62	\$2,988,088.17	\$1,314,821.48
UPLIFT	\$285,466.11	\$198,268.53	\$371,334.05	\$176,455.96	\$197,964.62	\$222,010.54	\$205,201.14
RESIDUALS	(\$685,296.04)	(\$468,053.47)	(\$884,656.86)	(\$698,235.11)	(\$974,830.15)	(\$489,810.00)	(\$224,079.78)
ANCILLARY SERVICES	\$1,323,093.28	\$1,404,194.63	\$1,464,472.20	\$1,476,721.22	\$1,462,699.84	\$1,365,835.89	\$1,155,058.93
TCC	\$2,704,994.19	\$1,813,622.88	\$3,969,877.35	\$6,093,600.80	\$6,717,447.66	\$4,221,975.61	\$574,428.76
	16	17	18	19	20	21	22
ENERGY	\$13,542,330.03	\$15,768,881.04	\$19,046,706.80	\$23,771,464.44	\$23,221,241.37	\$19,611,622.88	\$16,914,038.42
TRANSMISSION SERVICE	\$1,676,257.48	\$1,767,346.26	\$2,136,176.75	\$2,425,349.69	\$2,059,001.59	\$1,622,990.52	\$1,237,237.13
UPLIFT	\$168,557.97	\$227,832.57	\$268,330.97	\$185,709.19	\$356,341.32	\$354,435.74	\$268,627.02
RESIDUALS	(\$552,192.05)	(\$431,481.57)	(\$707,622.14)	(\$672,894.27)	(\$800,735.79)	(\$463,633.97)	(\$1,113,959.83)
ANCILLARY SERVICES	\$1,207,147.88	\$1,247,495.32	\$1,334,778.33	\$1,359,699.31	\$1,364,235.72	\$1,332,258.33	\$1,219,982.02
TCC	\$1,496,312.92	\$1,527,589.54	\$2,358,878.97	\$3,204,825.86	\$2,259,550.24	\$1,109,971.28	\$424,408.78
	23	24	25	26	27	28	29
ENERGY	\$21,543,608.09	\$28,408,524.36	\$30,246,418.74	\$36,945,919.54	\$33,372,656.36	\$14,858,731.12	\$14,628,336.11
TRANSMISSION SERVICE	\$1,735,199.09	\$2,639,865.91	\$2,635,536.15	\$3,616,127.65	\$3,525,265.49	\$1,616,654.70	\$1,408,347.77
UPLIFT	\$127,206.06	\$171,871.28	\$196,815.08	\$204,193.37	\$396,942.45	\$99,765.31	\$336,119.71
RESIDUALS	(\$588,038.83)	(\$691,735.92)	(\$831,166.11)	(\$814,967.76)	(\$881,630.04)	(\$397,780.94)	(\$741,754.55)
ANCILLARY SERVICES	\$1,338,015.58	\$1,328,691.48	\$1,375,666.87	\$1,462,953.11	\$1,426,601.10	\$1,225,666.95	\$1,182,885.91
TCC	\$1,526,924.49	\$4,406,425.36	\$3,669,463.26	\$5,956,187.98	\$6,433,449.66	\$1,499,013.73	\$1,060,066.25
	30	31					
ENERGY	\$25,304,179.78	\$19,293,049.43					
TRANSMISSION SERVICE	\$2,650,740.89	\$2,197,485.30					
UPLIFT	\$273,234.67	\$199,659.32					
RESIDUALS	(\$582,384.65)	(\$381,536.70)					
ANCILLARY SERVICES	\$1,382,259.21	\$1,306,080.58					
TCC	\$4,294,781.87	\$2,205,825.76					



SETTLEMENTS REPORT  
August 2021 Settlement Adjustment  
January 10, 2022

4-Month Settlement Adjustment – Market Costs Analysis

	MONDAY	TUESDAY	WEDNESDAY	THURSDAY	FRIDAY	SATURDAY	SUNDAY
ENERGY							1
TRANSMISSION SERVICE							\$7,855,196.67
UPLIFT							\$1,392,873.53
RESIDUALS							\$92,775.58
ANCILLARY SERVICES							(\$227,050.07)
TCC							\$1,041,713.39
							\$1,077,129.36
	2	3	4	5	6	7	8
ENERGY	\$10,419,052.97	\$10,431,497.25	\$10,434,418.95	\$11,977,131.90	\$16,289,663.88	\$15,316,381.61	\$15,038,442.93
TRANSMISSION SERVICE	\$1,337,227.21	\$1,270,769.54	\$1,288,344.07	\$1,250,616.39	\$1,662,712.03	\$1,569,769.44	\$1,543,230.51
UPLIFT	\$131,329.46	\$94,641.27	\$111,314.14	\$125,333.72	\$251,463.39	\$688,599.35	\$610,918.85
RESIDUALS	(\$290,368.54)	(\$316,143.58)	(\$303,638.42)	(\$422,819.33)	(\$339,417.84)	(\$971,522.86)	(\$1,687,206.56)
ANCILLARY SERVICES	\$1,164,769.19	\$1,155,324.93	\$1,161,428.82	\$1,182,947.92	\$1,292,994.13	\$1,272,505.28	\$1,223,123.75
TCC	\$1,189,099.96	\$994,606.70	\$796,134.04	\$536,271.88	\$1,915,256.03	\$1,389,073.31	\$1,475,492.02
	9	10	11	12	13	14	15
ENERGY	\$19,225,356.22	\$21,741,374.46	\$28,836,379.23	\$35,763,779.64	\$35,399,438.04	\$22,743,104.16	\$11,592,328.51
TRANSMISSION SERVICE	\$2,213,965.95	\$1,804,596.49	\$2,723,595.86	\$3,679,090.64	\$3,888,491.68	\$2,987,100.17	\$1,313,295.51
UPLIFT	\$299,106.16	\$198,392.65	\$426,465.56	\$253,935.19	\$294,330.38	\$222,063.99	\$205,178.20
RESIDUALS	(\$684,092.05)	(\$465,987.73)	(\$885,912.95)	(\$701,986.60)	(\$972,163.75)	(\$482,171.16)	(\$218,903.58)
ANCILLARY SERVICES	\$1,322,080.12	\$1,403,303.67	\$1,463,189.30	\$1,476,802.74	\$1,461,959.54	\$1,347,716.76	\$1,153,472.50
TCC	\$2,705,351.62	\$1,813,742.36	\$3,970,552.83	\$6,094,000.73	\$6,717,626.64	\$4,239,050.09	\$574,731.75
	16	17	18	19	20	21	22
ENERGY	\$13,527,269.34	\$15,757,367.38	\$19,031,118.60	\$23,751,099.10	\$23,212,047.83	\$19,600,714.16	\$16,905,734.56
TRANSMISSION SERVICE	\$1,674,911.35	\$1,766,474.09	\$2,135,295.66	\$2,424,556.83	\$2,058,226.03	\$1,622,047.48	\$1,236,392.23
UPLIFT	\$168,590.29	\$227,848.77	\$268,335.11	\$185,722.04	\$356,348.15	\$354,462.70	\$268,625.49
RESIDUALS	(\$549,721.34)	(\$430,091.50)	(\$705,773.31)	(\$668,640.35)	(\$801,551.60)	(\$462,325.21)	(\$1,113,016.03)
ANCILLARY SERVICES	\$1,204,161.15	\$1,246,449.47	\$1,330,834.58	\$1,358,202.80	\$1,361,304.28	\$1,330,604.79	\$1,219,073.65
TCC	\$1,498,252.77	\$1,528,057.67	\$2,362,186.97	\$3,205,663.92	\$2,261,949.05	\$1,110,892.20	\$424,638.69
	23	24	25	26	27	28	29
ENERGY	\$21,531,476.15	\$28,385,435.15	\$30,218,385.62	\$36,930,398.69	\$33,356,501.56	\$14,850,413.16	\$14,622,972.01
TRANSMISSION SERVICE	\$1,734,364.51	\$2,639,067.48	\$2,635,244.47	\$3,615,688.10	\$3,524,905.05	\$1,615,830.68	\$1,407,434.08
UPLIFT	\$127,221.36	\$171,860.08	\$243,261.42	\$250,572.70	\$455,209.80	\$99,771.24	\$335,786.88
RESIDUALS	(\$586,568.90)	(\$687,219.53)	(\$822,227.15)	(\$811,735.45)	(\$874,569.04)	(\$396,680.16)	(\$741,535.44)
ANCILLARY SERVICES	\$1,335,770.29	\$1,322,880.56	\$1,375,007.91	\$1,462,564.10	\$1,426,367.21	\$1,222,040.20	\$1,179,588.97
TCC	\$1,528,504.45	\$4,411,420.16	\$3,669,346.36	\$5,956,081.10	\$6,433,052.77	\$1,501,865.64	\$1,062,674.51
	30	31					
ENERGY	\$25,286,318.00	\$19,280,371.51					
TRANSMISSION SERVICE	\$2,649,975.23	\$2,196,924.93					
UPLIFT	\$273,343.22	\$199,688.79					
RESIDUALS	(\$577,102.38)	(\$377,187.57)					
ANCILLARY SERVICES	\$1,381,096.46	\$1,303,446.67					
TCC	\$4,295,363.87	\$2,207,969.68					

