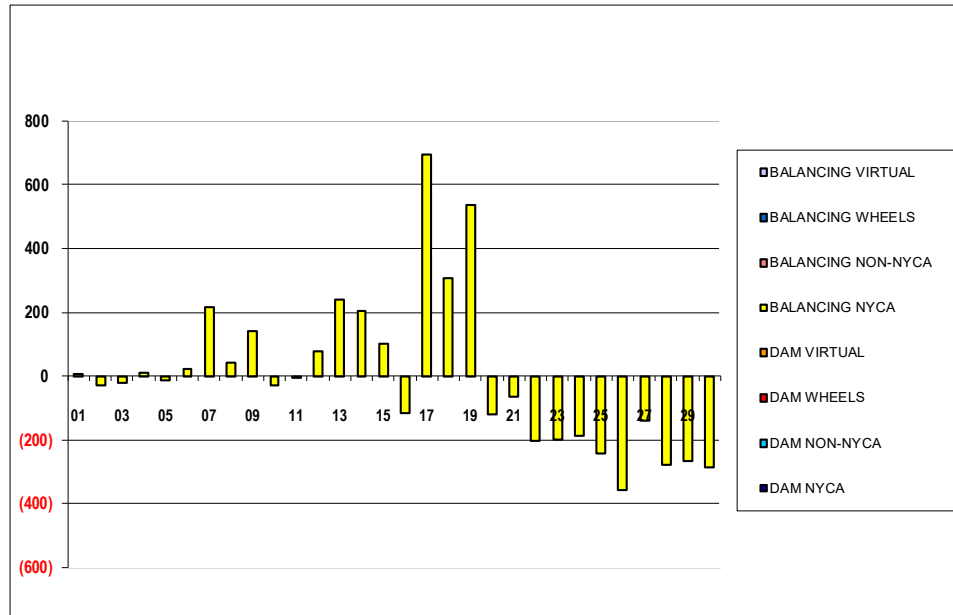


SETTLEMENTS REPORT
 June 2022 Settlement Adjustment
 November 7, 2022

Settlement Adjustment – Market Supply Delta Analysis

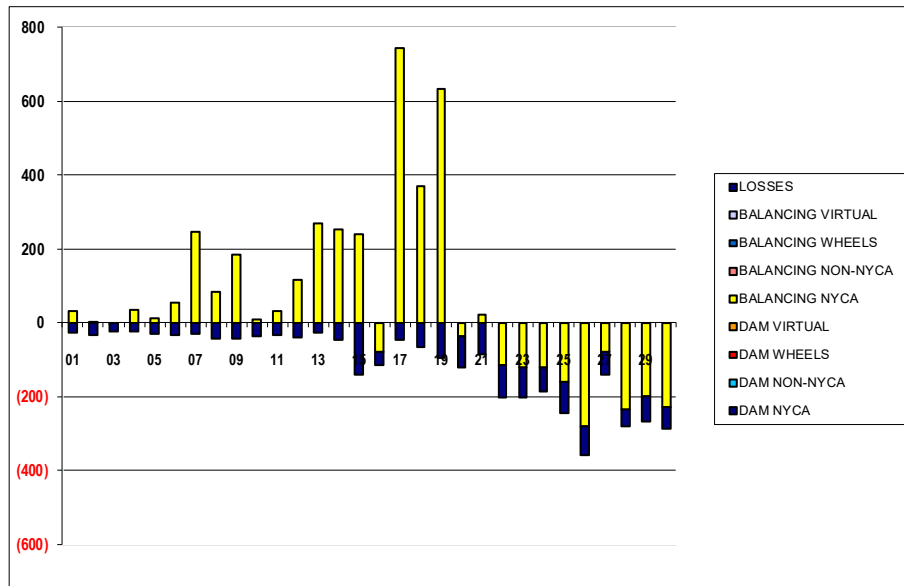
	MONDAY	TUESDAY	WEDNESDAY	THURSDAY	FRIDAY	SATURDAY	SUNDAY
			1	2	3	4	5
DAM NYCA			0	0	0	0	0
DAM NON-NYCA			0	0	0	0	0
DAM WHEELS			0	0	0	0	0
DAM VIRTUAL			0	0	0	0	0
BALANCING NYCA			7	(31)	(22)	11	(15)
BALANCING NON-NYCA			0	0	0	0	0
BALANCING WHEELS			0	0	0	0	0
BALANCING VIRTUAL			0	0	0	0	0
	6	7	8	9	10	11	12
DAM NYCA	0	0	0	0	0	0	0
DAM NON-NYCA	0	0	0	0	0	0	0
DAM WHEELS	0	0	0	0	0	0	0
DAM VIRTUAL	0	0	0	0	0	0	0
BALANCING NYCA	22	217	43	142	(29)	(2)	77
BALANCING NON-NYCA	0	0	0	0	0	0	0
BALANCING WHEELS	0	0	0	0	0	0	0
BALANCING VIRTUAL	0	0	0	0	0	0	0
	13	14	15	16	17	18	19
DAM NYCA	0	0	0	0	0	0	0
DAM NON-NYCA	0	0	0	0	0	0	0
DAM WHEELS	0	0	0	0	0	0	0
DAM VIRTUAL	0	0	0	0	0	0	0
BALANCING NYCA	242	205	100	(115)	696	307	538
BALANCING NON-NYCA	0	0	0	0	0	0	0
BALANCING WHEELS	0	0	0	0	0	0	0
BALANCING VIRTUAL	0	0	0	0	0	0	0
	20	21	22	23	24	25	26
DAM NYCA	0	0	0	0	0	0	0
DAM NON-NYCA	0	0	0	0	0	0	0
DAM WHEELS	0	0	0	0	0	0	0
DAM VIRTUAL	0	0	0	0	0	0	0
BALANCING NYCA	(122)	(64)	(202)	(201)	(187)	(244)	(359)
BALANCING NON-NYCA	0	0	0	0	0	0	0
BALANCING WHEELS	0	0	0	0	0	0	0
BALANCING VIRTUAL	0	0	0	0	0	0	0
	27	28	29	30			
DAM NYCA	0	0	0	0			
DAM NON-NYCA	0	0	0	0			
DAM WHEELS	0	0	0	0			
DAM VIRTUAL	0	0	0	0			
BALANCING NYCA	(141)	(279)	(269)	(287)			
BALANCING NON-NYCA	0	0	0	0			
BALANCING WHEELS	0	0	0	0			
BALANCING VIRTUAL	0	0	0	0			



SETTLEMENTS REPORT
 June 2022 Settlement Adjustment
 November 7, 2022

Settlement Adjustment – Market Withdrawals Delta Analysis

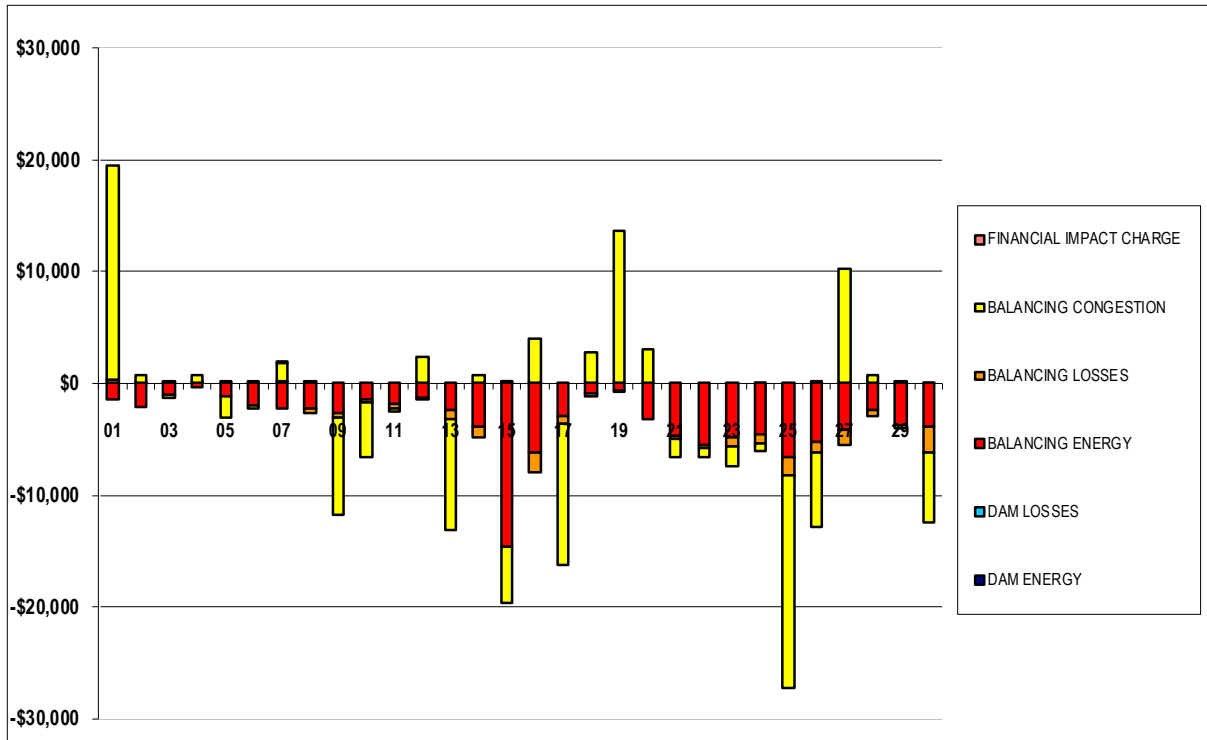
	MONDAY	TUESDAY	WEDNESDAY	THURSDAY	FRIDAY	SATURDAY	SUNDAY
			1	2	3	4	5
DAM NYCA			0	0	0	0	0
DAM NON-NYCA			0	0	0	0	0
DAM WHEELS			0	0	0	0	0
DAM VIRTUAL			0	0	0	0	0
BALANCING NYCA			33	1	(2)	35	14
BALANCING NON-NYCA			0	0	0	0	0
BALANCING WHEELS			0	0	0	0	0
BALANCING VIRTUAL			0	0	0	0	0
UFE/LOSSES			(27)	(32)	(20)	(25)	(28)
	6	7	8	9	10	11	12
DAM NYCA	0	0	0	0	0	0	0
DAM NON-NYCA	0	0	0	0	0	0	0
DAM WHEELS	0	0	0	0	0	0	0
DAM VIRTUAL	0	0	0	0	0	0	0
BALANCING NYCA	56	246	85	183	8	31	115
BALANCING NON-NYCA	0	0	0	0	0	0	0
BALANCING WHEELS	0	0	0	0	0	0	0
BALANCING VIRTUAL	0	0	0	0	0	0	0
UFE/LOSSES	(34)	(29)	(43)	(42)	(36)	(33)	(38)
	13	14	15	16	17	18	19
DAM NYCA	0	0	0	0	0	0	0
DAM NON-NYCA	0	0	0	0	0	0	0
DAM WHEELS	0	0	0	0	0	0	0
DAM VIRTUAL	0	0	0	0	0	0	0
BALANCING NYCA	269	252	241	(80)	743	371	634
BALANCING NON-NYCA	0	0	0	0	0	0	0
BALANCING WHEELS	0	0	0	0	0	0	0
BALANCING VIRTUAL	0	0	0	0	0	0	0
UFE/LOSSES	(27)	(47)	(142)	(36)	(48)	(64)	(96)
	20	21	22	23	24	25	26
DAM NYCA	0	0	0	0	0	0	0
DAM NON-NYCA	0	0	0	0	0	0	0
DAM WHEELS	0	0	0	0	0	0	0
DAM VIRTUAL	0	0	0	0	0	0	0
BALANCING NYCA	(35)	23	(114)	(120)	(122)	(161)	(280)
BALANCING NON-NYCA	0	0	0	0	0	0	0
BALANCING WHEELS	0	0	0	0	0	0	0
BALANCING VIRTUAL	0	0	0	0	0	0	0
UFE/LOSSES	(87)	(87)	(88)	(81)	(65)	(84)	(79)
	27	28	29	30			
DAM NYCA	0	0	0	0			
DAM NON-NYCA	0	0	0	0			
DAM WHEELS	0	0	0	0			
DAM VIRTUAL	0	0	0	0			
BALANCING NYCA	(80)	(234)	(199)	(227)			
BALANCING NON-NYCA	0	0	0	0			
BALANCING WHEELS	0	0	0	0			
BALANCING VIRTUAL	0	0	0	0			
UFE/LOSSES	(61)	(45)	(70)	(59)			



SETTLEMENTS REPORT
 June 2022 Settlement Adjustment
 November 7, 2022

Settlement Adjustment – Market Residuals Delta Analysis

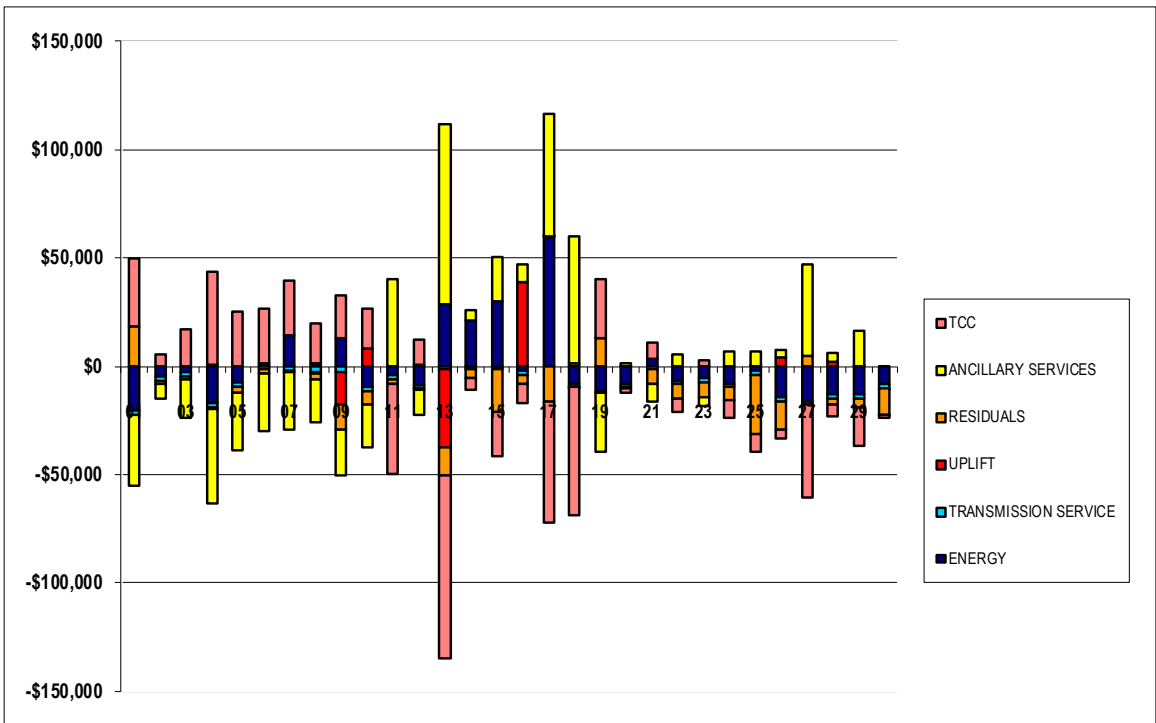
	MONDAY	TUESDAY	WEDNESDAY	THURSDAY	FRIDAY	SATURDAY	SUNDAY
			1	2	3	4	5
DAM ENERGY			\$0.00	\$0.00	\$0.00	\$0.01	\$0.00
DAM LOSSES			\$0.00	(\$0.01)	\$0.00	\$0.00	\$0.00
BALANCING ENERGY			(\$1,490.97)	(\$2,069.32)	(\$1,090.12)	(\$359.89)	(\$1,127.11)
BALANCING LOSSES			\$274.84	\$95.08	\$189.72	\$81.73	\$201.04
BALANCING CONGESTION			\$19,282.66	\$668.78	(\$233.04)	\$661.79	(\$1,977.20)
FINANCIAL IMPACT CHARGE			\$0.00	\$0.00	\$0.00	\$0.00	\$0.00
	6	7	8	9	10	11	12
DAM ENERGY	\$0.00	\$0.00	\$0.00	\$0.00	\$0.00	\$0.01	\$0.00
DAM LOSSES	(\$0.01)	\$0.00	\$0.00	\$0.01	\$0.00	\$0.00	\$0.00
BALANCING ENERGY	(\$1,987.04)	(\$2,187.18)	(\$2,208.48)	(\$2,591.26)	(\$1,379.92)	(\$1,822.77)	(\$1,270.00)
BALANCING LOSSES	\$113.92	\$149.72	(\$426.29)	(\$433.94)	(\$306.31)	(\$469.64)	(\$214.37)
BALANCING CONGESTION	(\$297.84)	\$1,661.76	\$194.61	(\$8,767.11)	(\$4,891.82)	(\$250.98)	\$2,363.77
FINANCIAL IMPACT CHARGE	\$0.00	\$0.06	\$0.00	\$0.00	\$0.00	\$0.00	\$0.00
	13	14	15	16	17	18	19
DAM ENERGY	\$0.00	\$0.01	(\$0.01)	\$0.00	\$0.00	\$0.00	\$0.00
DAM LOSSES	\$0.01	\$0.00	\$0.00	\$0.00	\$0.00	\$0.00	\$0.01
BALANCING ENERGY	(\$2,367.14)	(\$3,914.22)	(\$14,659.18)	(\$6,174.82)	(\$2,924.53)	(\$929.03)	(\$575.92)
BALANCING LOSSES	(\$834.09)	(\$909.33)	\$104.59	(\$1,799.50)	(\$743.97)	(\$295.42)	(\$2.50)
BALANCING CONGESTION	(\$9,956.53)	\$756.16	(\$4,964.25)	\$3,982.12	(\$12,638.86)	\$2,719.56	\$13,643.06
FINANCIAL IMPACT CHARGE	\$0.00	\$0.00	\$0.12	\$0.00	\$0.00	\$0.00	\$0.00
	20	21	22	23	24	25	26
DAM ENERGY	\$0.01	\$0.00	\$0.00	\$0.00	\$0.00	\$0.01	\$0.01
DAM LOSSES	\$0.00	\$0.00	\$0.00	\$0.01	(\$0.01)	\$0.00	\$0.00
BALANCING ENERGY	(\$3,154.21)	(\$4,699.94)	(\$5,462.65)	(\$4,874.42)	(\$4,504.34)	(\$6,649.47)	(\$5,211.37)
BALANCING LOSSES	\$17.63	(\$323.79)	(\$273.20)	(\$825.08)	(\$820.16)	(\$1,569.55)	(\$976.11)
BALANCING CONGESTION	\$3,032.29	(\$1,634.38)	(\$820.92)	(\$1,748.19)	(\$781.03)	(\$18,994.82)	(\$6,676.56)
FINANCIAL IMPACT CHARGE	\$0.00	\$0.00	\$0.00	\$0.00	\$0.00	\$0.00	\$0.05
	27	28	29	30			
DAM ENERGY	\$0.00	(\$0.01)	\$0.01	\$0.01			
DAM LOSSES	\$0.00	\$0.00	(\$0.01)	(\$0.01)			
BALANCING ENERGY	(\$4,150.48)	(\$2,440.59)	(\$3,759.00)	(\$3,898.35)			
BALANCING LOSSES	(\$1,366.59)	(\$539.41)	\$38.01	(\$2,232.88)			
BALANCING CONGESTION	\$10,300.18	\$704.03	(\$190.44)	(\$6,319.66)			
FINANCIAL IMPACT CHARGE	\$0.00	\$0.00	\$0.00	\$0.00			



SETTLEMENTS REPORT
 June 2022 Settlement Adjustment
 November 7, 2022

Settlement Adjustment – Market Costs Delta Analysis

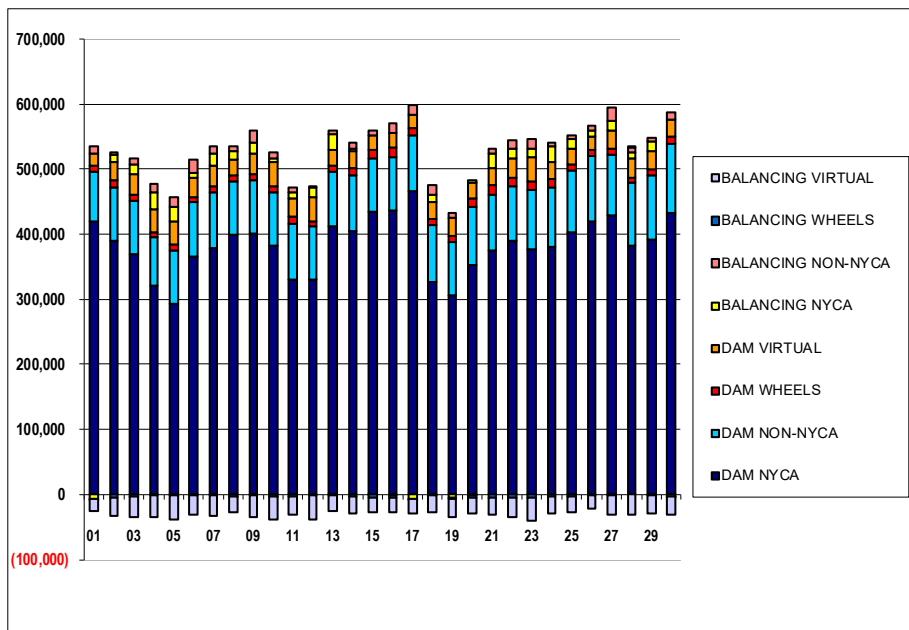
	MONDAY	TUESDAY	WEDNESDAY	THURSDAY	FRIDAY	SATURDAY	SUNDAY
ENERGY			1	2	3	4	5
TRANSMISSION SERVICE			(\$20,730.12)	(\$4,618.35)	(\$2,606.06)	(\$17,295.06)	(\$7,257.31)
UPLIFT			(\$1,771.66)	(\$2,146.06)	(\$2,070.30)	(\$1,938.53)	(\$2,011.01)
RESIDUALS			\$0.01	\$0.01	\$0.04	(\$207.47)	(\$0.10)
ANCILLARY SERVICES			\$18,066.53	(\$1,305.47)	(\$1,133.44)	\$383.64	(\$2,903.27)
TCC			(\$32,892.25)	(\$7,018.43)	(\$18,285.94)	(\$44,014.70)	(\$26,336.00)
			\$31,881.79	\$5,782.90	\$17,096.07	\$42,910.12	\$25,184.01
	6	7	8	9	10	11	12
ENERGY	\$1,568.65	\$14,128.59	\$1,237.24	\$13,052.72	(\$9,268.81)	(\$4,165.17)	(\$8,737.09)
TRANSMISSION SERVICE	(\$1,459.74)	(\$2,336.63)	(\$2,788.34)	(\$2,405.30)	(\$2,204.00)	(\$1,784.19)	(\$1,487.59)
UPLIFT	(\$0.01)	\$0.01	(\$660.18)	(\$15,081.77)	\$8,044.21	\$3.69	(\$621.16)
RESIDUALS	(\$2,170.97)	(\$375.64)	(\$2,440.16)	(\$11,792.30)	(\$6,578.05)	(\$2,543.38)	\$879.40
ANCILLARY SERVICES	(\$26,107.27)	(\$26,626.08)	(\$20,284.05)	(\$21,105.52)	(\$19,696.28)	\$40,445.35	(\$11,930.68)
TCC	\$25,284.80	\$25,359.63	\$18,730.22	\$19,790.12	\$18,437.38	(\$41,459.11)	\$11,102.62
	13	14	15	16	17	18	19
ENERGY	\$28,650.96	\$20,973.15	\$29,674.91	(\$2,380.16)	\$59,545.07	(\$8,459.04)	(\$11,484.86)
TRANSMISSION SERVICE	(\$1,577.05)	(\$902.50)	(\$800.63)	(\$1,639.20)	\$432.16	(\$1,176.89)	(\$725.67)
UPLIFT	(\$35,929.11)	(\$583.84)	(\$475.94)	\$38,619.58	\$33.66	(\$22.43)	\$0.00
RESIDUALS	(\$13,157.75)	(\$4,067.38)	(\$19,518.73)	(\$3,992.20)	(\$16,307.36)	\$1,495.11	\$13,064.65
ANCILLARY SERVICES	\$83,134.70	\$5,246.16	\$20,596.01	\$8,336.73	\$56,330.30	\$58,805.02	(\$27,228.33)
TCC	(\$83,973.29)	(\$5,675.01)	(\$21,002.83)	(\$9,275.40)	(\$55,837.11)	(\$59,378.31)	\$27,002.39
	20	21	22	23	24	25	26
ENERGY	(\$8,019.24)	\$3,286.89	(\$6,476.73)	(\$5,487.56)	(\$7,882.09)	(\$1,764.12)	(\$14,380.45)
TRANSMISSION SERVICE	(\$1,795.67)	(\$1,621.66)	(\$1,689.73)	(\$1,700.32)	(\$1,762.46)	(\$2,398.48)	(\$1,857.33)
UPLIFT	\$0.00	(\$0.01)	\$0.00	\$0.00	\$0.01	\$108.69	\$4,210.76
RESIDUALS	(\$104.28)	(\$6,658.11)	(\$6,556.77)	(\$7,447.68)	(\$6,105.54)	(\$27,213.83)	(\$12,863.98)
ANCILLARY SERVICES	\$1,295.22	(\$8,353.53)	\$5,613.56	(\$3,560.47)	\$6,985.68	\$6,705.42	\$3,062.53
TCC	(\$2,317.49)	\$7,406.71	(\$6,643.03)	\$2,525.59	(\$8,057.24)	(\$8,239.44)	(\$4,236.98)
	27	28	29	30			
ENERGY	(\$16,456.77)	(\$13,243.03)	(\$12,793.17)	(\$8,028.25)			
TRANSMISSION SERVICE	(\$1,238.66)	(\$2,054.55)	(\$2,362.48)	(\$1,957.66)			
UPLIFT	(\$2.81)	\$1,969.77	\$0.12	(\$128.19)			
RESIDUALS	\$4,783.11	(\$2,275.98)	(\$3,911.43)	(\$12,450.89)			
ANCILLARY SERVICES	\$42,320.42	\$4,085.06	\$16,387.28	(\$73.29)			
TCC	(\$43,071.72)	(\$5,323.83)	(\$17,810.62)	(\$1,101.89)			



SETTLEMENTS REPORT
June 2022 Settlement Adjustment
November 7, 2022

Initial Settlement – Market Supply Analysis

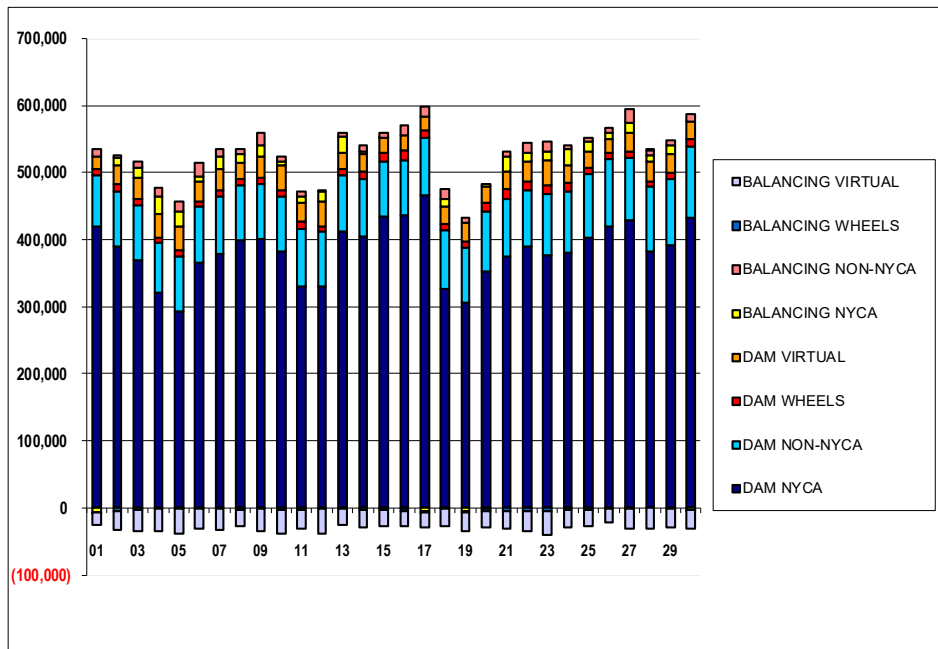
	MONDAY	TUESDAY	WEDNESDAY	THURSDAY	FRIDAY	SATURDAY	SUNDAY
			1	2	3	4	5
DAM NYCA			418,816	390,670	368,776	321,134	293,779
DAM NON-NYCA			78,103	81,015	83,458	75,071	81,903
DAM WHEELS			8,359	11,191	8,489	7,673	8,522
DAM VIRTUAL			18,544	28,612	32,108	34,292	36,391
BALANCING NYCA			(6,295)	10,230	13,967	26,746	20,908
BALANCING NON-NYCA			11,449	4,205	10,423	13,361	15,100
BALANCING WHEELS			(607)	(3,991)	(2,320)	(473)	(1,322)
BALANCING VIRTUAL			(18,544)	(28,612)	(32,108)	(34,292)	(36,391)
	6	7	8	9	10	11	12
DAM NYCA	365,299	379,581	398,671	400,809	382,314	329,653	329,478
DAM NON-NYCA	83,338	85,689	81,730	81,994	82,370	87,241	82,104
DAM WHEELS	8,447	8,966	10,287	8,753	9,469	10,069	7,821
DAM VIRTUAL	29,914	31,337	24,732	32,542	36,320	27,972	37,452
BALANCING NYCA	6,917	18,302	11,993	16,544	5,765	9,003	14,587
BALANCING NON-NYCA	21,374	10,739	7,432	18,802	8,696	7,690	2,239
BALANCING WHEELS	(1,247)	(1,766)	(3,067)	(1,553)	(2,269)	(2,865)	(621)
BALANCING VIRTUAL	(29,914)	(31,337)	(24,732)	(32,542)	(36,320)	(27,972)	(37,452)
	13	14	15	16	17	18	19
DAM NYCA	412,394	404,447	435,480	437,166	466,330	325,739	306,040
DAM NON-NYCA	83,511	86,452	80,861	81,687	84,945	88,721	82,529
DAM WHEELS	9,683	10,978	12,882	13,554	11,168	9,185	9,040
DAM VIRTUAL	23,879	26,337	22,447	23,061	21,659	26,114	28,431
BALANCING NYCA	24,207	3,100	(63)	(334)	(5,936)	10,916	(4,820)
BALANCING NON-NYCA	5,053	9,268	7,990	15,944	15,047	15,246	7,579
BALANCING WHEELS	(1,076)	(3,027)	(3,885)	(4,134)	(1,593)	(845)	(1,840)
BALANCING VIRTUAL	(23,879)	(26,337)	(22,447)	(23,061)	(21,659)	(26,114)	(28,431)
	20	21	22	23	24	25	26
DAM NYCA	353,411	374,209	390,526	377,315	381,399	402,933	419,537
DAM NON-NYCA	88,005	85,896	82,776	90,713	90,384	94,250	100,974
DAM WHEELS	13,267	14,559	14,313	13,957	13,189	10,295	9,150
DAM VIRTUAL	23,831	27,199	29,447	37,106	26,146	24,096	21,008
BALANCING NYCA	3,851	21,293	13,462	13,054	24,439	14,543	9,252
BALANCING NON-NYCA	(561)	8,545	13,591	14,275	4,803	5,794	7,141
BALANCING WHEELS	(4,187)	(4,609)	(5,088)	(3,953)	(2,665)	(2,284)	(735)
BALANCING VIRTUAL	(23,831)	(27,199)	(29,447)	(37,106)	(26,146)	(24,096)	(21,008)
	27	28	29	30			
DAM NYCA	428,662	382,306	392,617	433,188			
DAM NON-NYCA	93,895	97,274	98,450	106,104			
DAM WHEELS	8,645	7,200	9,556	10,500			
DAM VIRTUAL	29,038	30,375	27,787	26,731			
BALANCING NYCA	13,258	8,590	13,512	(2,316)			
BALANCING NON-NYCA	21,249	6,907	6,746	10,528			
BALANCING WHEELS	(926)	1,000	(515)	(1,280)			
BALANCING VIRTUAL	(29,038)	(30,375)	(27,787)	(26,731)			



SETTLEMENTS REPORT
 June 2022 Settlement Adjustment
 November 7, 2022

4-Month Settlement Adjustment – Market Supply Analysis

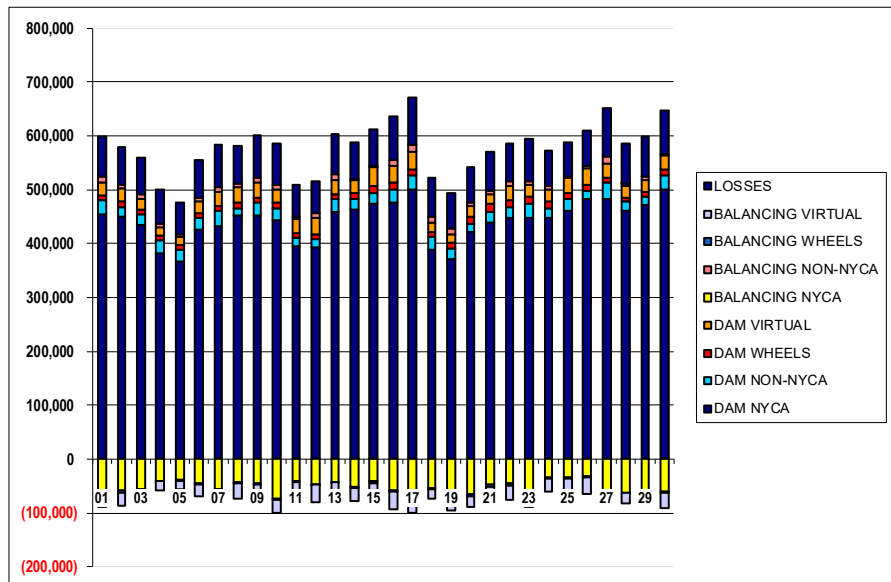
	MONDAY	TUESDAY	WEDNESDAY	THURSDAY	FRIDAY	SATURDAY	SUNDAY
			1	2	3	4	5
DAM NYCA			418,816	390,670	368,776	321,134	293,779
DAM NON-NYCA			78,103	81,015	83,458	75,071	81,903
DAM WHEELS			8,359	11,191	8,489	7,673	8,522
DAM VIRTUAL			18,544	28,612	32,108	34,292	36,391
BALANCING NYCA			(6,289)	10,199	13,944	26,756	20,893
BALANCING NON-NYCA			11,449	4,205	10,423	13,361	15,100
BALANCING WHEELS			(607)	(3,991)	(2,320)	(473)	(1,322)
BALANCING VIRTUAL			(18,544)	(28,612)	(32,108)	(34,292)	(36,391)
	6	7	8	9	10	11	12
DAM NYCA	365,299	379,581	398,671	400,809	382,314	329,653	329,478
DAM NON-NYCA	83,338	85,689	81,730	81,994	82,370	87,241	82,104
DAM WHEELS	8,447	8,966	10,287	8,753	9,469	10,069	7,821
DAM VIRTUAL	29,914	31,337	24,732	32,542	36,320	27,972	37,452
BALANCING NYCA	6,939	18,519	12,036	16,686	5,736	9,001	14,664
BALANCING NON-NYCA	21,374	10,739	7,432	18,802	8,696	7,690	2,239
BALANCING WHEELS	(1,247)	(1,766)	(3,067)	(1,553)	(2,269)	(2,865)	(621)
BALANCING VIRTUAL	(29,914)	(31,337)	(24,732)	(32,542)	(36,320)	(27,972)	(37,452)
	13	14	15	16	17	18	19
DAM NYCA	412,394	404,447	435,480	437,166	466,330	325,739	306,040
DAM NON-NYCA	83,511	86,452	80,861	81,687	84,945	88,721	82,529
DAM WHEELS	9,683	10,978	12,882	13,554	11,168	9,185	9,040
DAM VIRTUAL	23,879	26,337	22,447	23,061	21,659	26,114	28,431
BALANCING NYCA	24,448	3,304	37	(449)	(5,240)	11,223	(4,283)
BALANCING NON-NYCA	5,053	9,268	7,990	15,944	15,047	15,246	7,579
BALANCING WHEELS	(1,076)	(3,027)	(3,885)	(4,134)	(1,593)	(845)	(1,840)
BALANCING VIRTUAL	(23,879)	(26,337)	(22,447)	(23,061)	(21,659)	(26,114)	(28,431)
	20	21	22	23	24	25	26
DAM NYCA	353,411	374,209	390,526	377,315	381,399	402,933	419,537
DAM NON-NYCA	88,005	85,896	82,776	90,713	90,384	94,250	100,974
DAM WHEELS	13,267	14,559	14,313	13,957	13,189	10,295	9,150
DAM VIRTUAL	23,831	27,199	29,447	37,106	26,146	24,096	21,008
BALANCING NYCA	3,729	21,228	13,259	12,853	24,253	14,298	8,892
BALANCING NON-NYCA	(561)	8,545	13,591	14,275	4,803	5,794	7,141
BALANCING WHEELS	(4,187)	(4,609)	(5,088)	(3,953)	(2,665)	(2,284)	(735)
BALANCING VIRTUAL	(23,831)	(27,199)	(29,447)	(37,106)	(26,146)	(24,096)	(21,008)
	27	28	29	30			
DAM NYCA	428,662	382,306	392,617	433,188			
DAM NON-NYCA	93,895	97,274	98,450	106,104			
DAM WHEELS	8,645	7,200	9,556	10,500			
DAM VIRTUAL	29,038	30,375	27,787	26,731			
BALANCING NYCA	13,117	8,311	13,244	(2,602)			
BALANCING NON-NYCA	21,249	6,907	6,746	10,528			
BALANCING WHEELS	(926)	1,000	(515)	(1,280)			
BALANCING VIRTUAL	(29,038)	(30,375)	(27,787)	(26,731)			



SETTLEMENTS REPORT
 June 2022 Settlement Adjustment
 November 7, 2022

Initial Settlement – Market Withdrawals Analysis

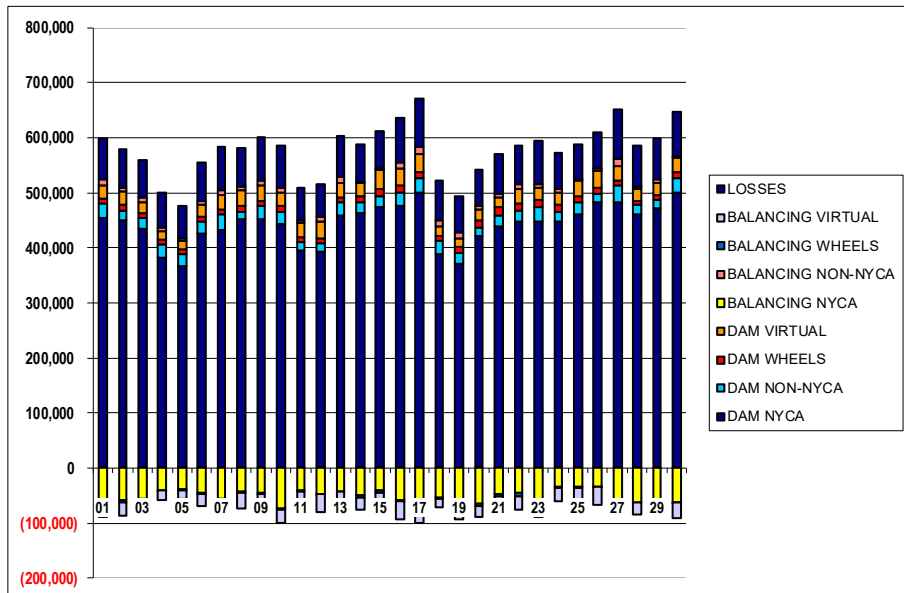
	MONDAY	TUESDAY	WEDNESDAY	THURSDAY	FRIDAY	SATURDAY	SUNDAY
			1	2	3	4	5
DAM NYCA			455,018	449,903	435,722	381,307	365,827
DAM NON-NYCA			25,274	16,657	19,223	25,044	23,351
DAM WHEELS			8,359	11,191	8,489	7,673	8,522
DAM VIRTUAL			24,876	23,919	20,073	16,487	15,798
BALANCING NYCA			(64,563)	(57,903)	(55,423)	(40,520)	(39,386)
BALANCING NON-NYCA			10,304	7,862	7,947	7,481	2,805
BALANCING WHEELS			(607)	(3,991)	(2,320)	(473)	(1,322)
BALANCING VIRTUAL			(24,876)	(23,919)	(20,073)	(16,487)	(15,798)
UFE/LOSSES			76,040	69,602	69,154	63,000	59,093
	6	7	8	9	10	11	12
DAM NYCA	425,418	432,563	452,880	451,714	444,483	395,279	392,942
DAM NON-NYCA	21,843	29,244	13,523	24,076	21,757	15,020	15,692
DAM WHEELS	8,447	8,966	10,287	8,753	9,469	10,069	7,821
DAM VIRTUAL	22,763	25,537	28,502	29,637	24,688	24,809	31,553
BALANCING NYCA	(46,124)	(55,372)	(42,420)	(45,805)	(72,549)	(40,937)	(47,275)
BALANCING NON-NYCA	6,001	7,691	6,395	8,217	9,289	4,035	7,878
BALANCING WHEELS	(1,247)	(1,766)	(3,067)	(1,553)	(2,269)	(2,865)	(621)
BALANCING VIRTUAL	(22,763)	(25,537)	(28,502)	(29,637)	(24,688)	(24,809)	(31,553)
UFE/LOSSES	69,790	80,184	69,448	79,947	76,166	60,190	59,172
	13	14	15	16	17	18	19
DAM NYCA	458,612	463,510	474,784	476,658	500,196	387,951	371,544
DAM NON-NYCA	23,777	19,981	18,864	24,089	25,997	25,532	20,311
DAM WHEELS	9,683	10,978	12,882	13,554	11,168	9,185	9,040
DAM VIRTUAL	26,968	23,334	34,695	31,042	34,091	34,091	17,271
BALANCING NYCA	(42,748)	(50,634)	(41,036)	(57,332)	(65,228)	(54,536)	(76,077)
BALANCING NON-NYCA	9,051	1,605	3,357	9,424	12,391	10,412	11,216
BALANCING WHEELS	(1,076)	(3,027)	(3,885)	(4,134)	(1,593)	(845)	(1,840)
BALANCING VIRTUAL	(26,968)	(23,334)	(34,695)	(31,042)	(34,091)	(17,271)	(16,783)
UFE/LOSSES	76,471	68,804	68,299	81,624	87,031	71,263	64,333
	20	21	22	23	24	25	26
DAM NYCA	422,064	438,215	448,344	447,187	448,285	461,400	482,699
DAM NON-NYCA	15,006	20,595	19,066	27,197	16,121	22,540	16,667
DAM WHEELS	13,267	14,559	14,313	13,957	13,189	10,295	9,150
DAM VIRTUAL	19,145	19,469	25,823	21,361	23,879	27,471	31,990
BALANCING NYCA	(65,638)	(46,305)	(45,510)	(64,270)	(33,799)	(33,289)	(33,045)
BALANCING NON-NYCA	6,767	6,308	7,726	7,081	5,166	1,912	4,546
BALANCING WHEELS	(4,187)	(4,609)	(5,088)	(3,953)	(2,665)	(2,284)	(735)
BALANCING VIRTUAL	(19,145)	(19,469)	(25,823)	(21,361)	(23,879)	(27,471)	(31,990)
UFE/LOSSES	66,506	71,130	70,730	78,162	65,254	64,957	66,036
	27	28	29	30			
DAM NYCA	483,669	460,239	471,456	500,786			
DAM NON-NYCA	29,373	18,824	14,917	25,750			
DAM WHEELS	8,645	7,200	9,556	10,500			
DAM VIRTUAL	26,966	20,009	21,427	27,685			
BALANCING NYCA	(59,526)	(63,266)	(57,435)	(61,508)			
BALANCING NON-NYCA	12,606	4,976	8,175	2,332			
BALANCING WHEELS	(926)	1,000	(515)	(1,280)			
BALANCING VIRTUAL	(26,966)	(20,009)	(21,427)	(27,685)			
UFE/LOSSES	90,941	74,304	74,212	80,145			



SETTLEMENTS REPORT
June 2022 Settlement Adjustment
November 7, 2022

4-Month Settlement Adjustment – Market Withdrawals Analysis

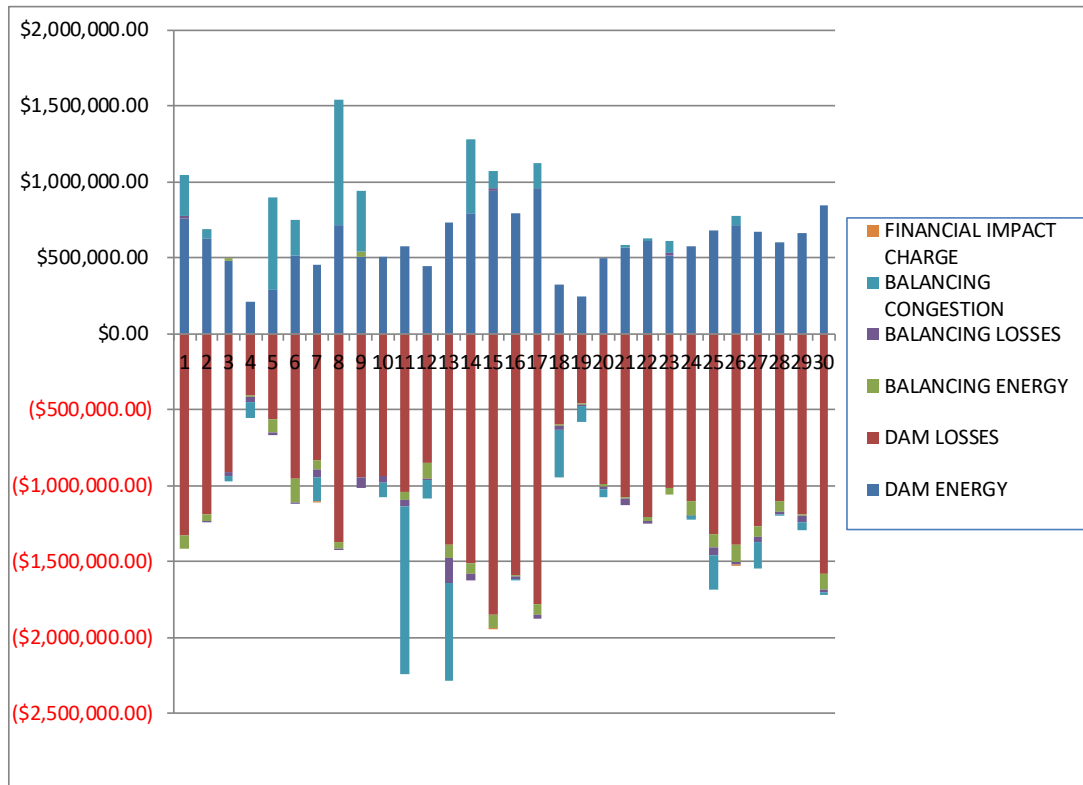
	MONDAY	TUESDAY	WEDNESDAY	THURSDAY	FRIDAY	SATURDAY	SUNDAY
			1	2	3	4	5
DAM NYCA			455,018	449,903	435,722	381,307	365,827
DAM NON-NYCA			25,274	16,657	19,223	25,044	23,351
DAM WHEELS			8,359	11,191	8,489	7,673	8,522
DAM VIRTUAL			24,876	23,919	20,073	16,487	15,798
BALANCING NYCA			(64,530)	(57,902)	(55,425)	(40,484)	(39,372)
BALANCING NON-NYCA			10,304	7,862	7,947	7,481	2,805
BALANCING WHEELS			(607)	(3,991)	(2,320)	(473)	(1,322)
BALANCING VIRTUAL			(24,876)	(23,919)	(20,073)	(16,487)	(15,798)
UFE/LOSSES			76,014	69,570	69,134	62,975	59,064
	6	7	8	9	10	11	12
DAM NYCA	425,418	432,563	452,880	451,714	444,483	395,279	392,942
DAM NON-NYCA	21,843	29,244	13,523	24,076	21,757	15,020	15,692
DAM WHEELS	8,447	8,966	10,287	8,753	9,469	10,069	7,821
DAM VIRTUAL	22,763	25,537	28,502	29,637	24,688	24,809	31,553
BALANCING NYCA	(46,068)	(55,126)	(42,335)	(45,621)	(72,541)	(40,906)	(47,160)
BALANCING NON-NYCA	6,001	7,691	6,395	8,217	9,289	4,035	7,878
BALANCING WHEELS	(1,247)	(1,766)	(3,067)	(1,553)	(2,269)	(2,865)	(621)
BALANCING VIRTUAL	(22,763)	(25,537)	(28,502)	(29,637)	(24,688)	(24,809)	(31,553)
UFE/LOSSES	69,756	80,155	69,406	79,905	76,129	60,157	59,134
	13	14	15	16	17	18	19
DAM NYCA	458,612	463,510	474,784	476,658	500,196	387,951	371,544
DAM NON-NYCA	23,777	19,981	18,864	24,089	25,997	25,532	20,311
DAM WHEELS	9,683	10,978	12,882	13,554	11,168	9,185	9,040
DAM VIRTUAL	26,968	23,334	34,695	31,042	34,091	17,271	16,783
BALANCING NYCA	(42,479)	(50,382)	(40,795)	(57,411)	(64,484)	(54,164)	(75,443)
BALANCING NON-NYCA	9,051	1,605	3,357	9,424	12,391	10,412	11,216
BALANCING WHEELS	(1,076)	(3,027)	(3,885)	(4,134)	(1,593)	(845)	(1,840)
BALANCING VIRTUAL	(26,968)	(23,334)	(34,695)	(31,042)	(34,091)	(17,271)	(16,783)
UFE/LOSSES	76,444	68,757	68,158	81,589	86,983	71,199	64,237
	20	21	22	23	24	25	26
DAM NYCA	422,064	438,215	448,344	447,187	448,285	461,400	482,699
DAM NON-NYCA	15,006	20,595	19,066	27,197	16,121	22,540	16,667
DAM WHEELS	13,267	14,559	14,313	13,957	13,189	10,295	9,150
DAM VIRTUAL	19,145	19,469	25,823	21,361	23,879	27,471	31,990
BALANCING NYCA	(65,673)	(46,282)	(45,624)	(64,390)	(33,921)	(33,450)	(33,325)
BALANCING NON-NYCA	6,767	6,308	7,726	7,081	5,166	1,912	4,546
BALANCING WHEELS	(4,187)	(4,609)	(5,088)	(3,953)	(2,665)	(2,284)	(735)
BALANCING VIRTUAL	(19,145)	(19,469)	(25,823)	(21,361)	(23,879)	(27,471)	(31,990)
UFE/LOSSES	66,419	71,043	70,642	78,081	65,188	64,874	65,957
	27	28	29	30			
DAM NYCA	483,669	460,239	471,456	500,786			
DAM NON-NYCA	29,373	18,824	14,917	25,750			
DAM WHEELS	8,645	7,200	9,556	10,500			
DAM VIRTUAL	26,966	20,009	21,427	27,685			
BALANCING NYCA	(59,606)	(63,500)	(57,634)	(61,736)			
BALANCING NON-NYCA	12,606	4,976	8,175	2,332			
BALANCING WHEELS	(926)	1,000	(515)	(1,280)			
BALANCING VIRTUAL	(26,966)	(20,009)	(21,427)	(27,685)			
UFE/LOSSES	90,880	74,259	74,142	80,086			



SETTLEMENTS REPORT
 June 2022 Settlement Adjustment
 November 7, 2022

Initial Settlement – Market Residuals Analysis

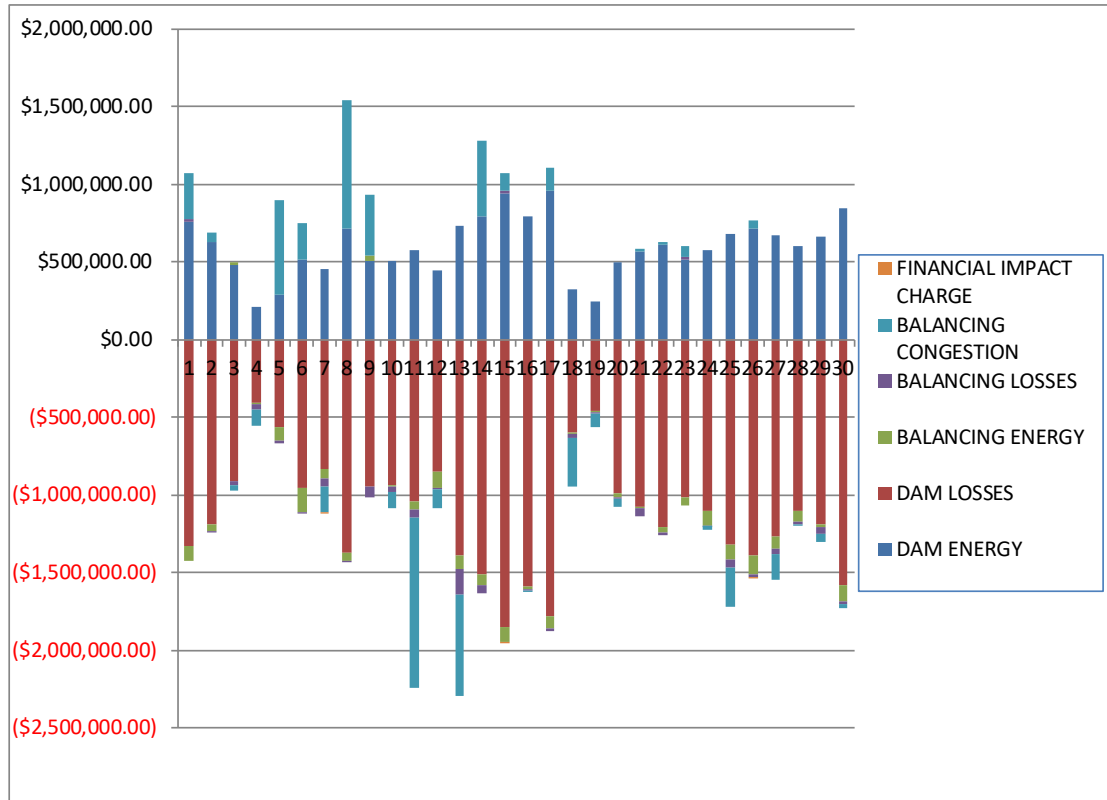
	MONDAY	TUESDAY	WEDNESDAY	THURSDAY	FRIDAY	SATURDAY	SUNDAY
			1	2	3	4	5
DAM ENERGY			\$759,996.18	\$626,025.08	\$476,917.78	\$211,888.26	\$289,146.58
DAM LOSSES			(\$1,334,035.67)	(\$1,191,445.45)	(\$915,765.07)	(\$411,773.54)	(\$566,217.74)
BALANCING ENERGY			(\$86,049.25)	(\$39,993.58)	\$18,031.15	(\$9,140.75)	(\$88,471.27)
BALANCING LOSSES			\$11,655.46	(\$252.15)	(\$24,961.57)	(\$26,865.63)	(\$12,419.40)
BALANCING CONGESTION			\$275,172.63	\$60,710.80	(\$31,939.04)	(\$110,669.78)	\$608,138.06
FINANCIAL IMPACT CHARGE			\$0.00	\$0.00	\$0.00	\$0.00	\$0.00
	6	7	8	9	10	11	12
DAM ENERGY	\$512,799.40	\$449,100.79	\$711,468.05	\$504,313.40	\$501,141.20	\$575,278.57	\$440,904.39
DAM LOSSES	(\$959,258.35)	(\$835,000.25)	(\$1,370,630.87)	(\$943,409.33)	(\$940,349.13)	(\$1,041,252.91)	(\$851,200.94)
BALANCING ENERGY	(\$151,074.36)	(\$61,344.93)	(\$50,144.58)	\$38,139.92	(\$2,158.93)	(\$53,984.56)	(\$101,471.49)
BALANCING LOSSES	(\$6,947.40)	(\$48,162.77)	(\$8,032.37)	(\$73,537.54)	(\$38,185.91)	(\$46,467.11)	(\$10,183.34)
BALANCING CONGESTION	\$236,283.18	(\$163,518.47)	\$824,735.02	\$398,630.76	(\$95,270.59)	(\$1,102,250.52)	(\$120,501.41)
FINANCIAL IMPACT CHARGE	\$0.00	(\$369.35)	\$0.00	\$0.00	\$0.00	\$0.00	\$0.00
	13	14	15	16	17	18	19
DAM ENERGY	\$727,857.66	\$787,909.53	\$942,413.53	\$792,257.32	\$957,379.68	\$323,772.38	\$239,520.68
DAM LOSSES	(\$1,392,722.52)	(\$1,515,971.26)	(\$1,855,255.82)	(\$1,591,747.91)	(\$1,786,530.27)	(\$602,438.63)	(\$462,322.70)
BALANCING ENERGY	(\$80,903.33)	(\$65,717.66)	(\$81,779.98)	(\$11,466.87)	(\$68,554.07)	(\$8,997.25)	(\$8,724.10)
BALANCING LOSSES	(\$169,812.12)	(\$48,352.24)	\$13,110.08	(\$9,939.60)	(\$20,150.47)	(\$22,309.28)	(\$2,566.98)
BALANCING CONGESTION	(\$639,454.58)	\$489,580.67	\$115,508.20	(\$5,301.56)	\$162,507.80	(\$311,072.67)	(\$104,658.06)
FINANCIAL IMPACT CHARGE	\$0.00	\$0.00	(\$58.75)	\$0.00	\$0.00	\$0.00	\$0.00
	20	21	22	23	24	25	26
DAM ENERGY	\$499,003.19	\$561,795.64	\$608,261.06	\$517,466.71	\$577,294.85	\$676,521.08	\$712,722.54
DAM LOSSES	(\$988,703.72)	(\$1,078,163.07)	(\$1,207,100.92)	(\$1,015,692.10)	(\$1,105,911.74)	(\$1,323,722.86)	(\$1,387,263.70)
BALANCING ENERGY	(\$21,922.89)	(\$7,590.71)	(\$31,591.48)	(\$45,415.54)	(\$90,493.42)	(\$86,086.78)	(\$116,221.15)
BALANCING LOSSES	(\$15,050.56)	(\$46,947.62)	(\$13,133.80)	\$11,933.31	(\$1,361.25)	(\$47,420.63)	(\$19,361.43)
BALANCING CONGESTION	(\$52,193.74)	\$23,745.61	\$14,879.97	\$76,547.66	(\$24,011.31)	(\$233,009.54)	\$61,910.50
FINANCIAL IMPACT CHARGE	\$0.00	\$0.00	\$0.00	\$0.00	\$0.00	\$0.00	(\$16.36)
	27	28	29	30			
DAM ENERGY	\$665,661.67	\$602,934.06	\$660,894.83	\$841,170.16			
DAM LOSSES	(\$1,266,160.80)	(\$1,105,935.43)	(\$1,190,596.02)	(\$1,585,623.86)			
BALANCING ENERGY	(\$76,954.77)	(\$65,694.66)	(\$12,639.45)	(\$101,035.57)			
BALANCING LOSSES	(\$34,515.72)	(\$15,801.13)	(\$42,587.11)	(\$13,677.62)			
BALANCING CONGESTION	(\$170,930.45)	(\$2,193.33)	(\$50,920.80)	(\$21,527.30)			
FINANCIAL IMPACT CHARGE	\$0.00	\$0.00	\$0.00	\$0.00			



SETTLEMENTS REPORT
 June 2022 Settlement Adjustment
 November 7, 2022

4-Month Settlement Adjustment – Market Residuals Analysis

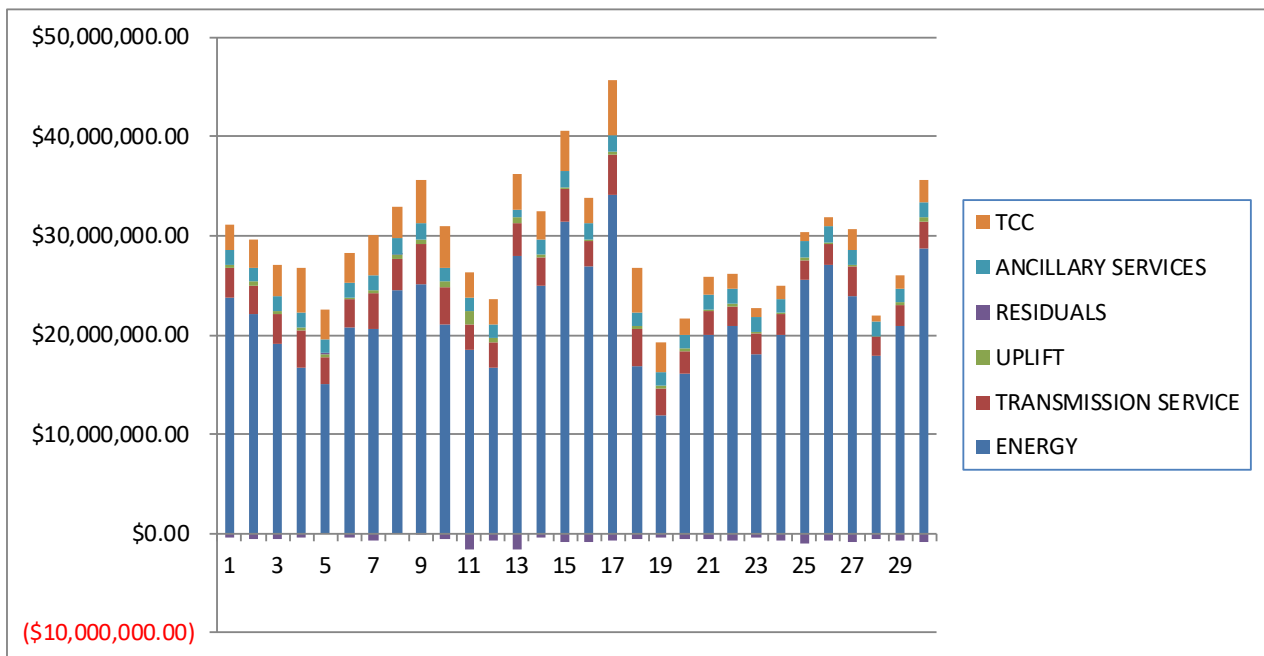
	MONDAY	TUESDAY	WEDNESDAY	THURSDAY	FRIDAY	SATURDAY	SUNDAY
			1	2	3	4	5
DAM ENERGY			\$759,996.18	\$626,025.08	\$476,917.78	\$211,888.27	\$289,146.58
DAM LOSSES			(\$1,334,035.67)	(\$1,191,445.46)	(\$915,765.07)	(\$411,773.54)	(\$566,217.74)
BALANCING ENERGY			(\$87,540.22)	(\$42,062.90)	\$16,941.03	(\$9,500.64)	(\$89,598.38)
BALANCING LOSSES			\$11,930.30	(\$157.07)	(\$24,771.85)	(\$26,783.90)	(\$12,218.36)
BALANCING CONGESTION			\$294,455.29	\$61,379.58	(\$32,172.08)	(\$110,007.99)	\$606,160.86
FINACIAL IMPACT CHARGE			\$0.00	\$0.00	\$0.00	\$0.00	\$0.00
	6	7	8	9	10	11	12
DAM ENERGY	\$512,799.40	\$449,100.79	\$711,468.05	\$504,313.40	\$501,141.20	\$575,278.58	\$440,904.39
DAM LOSSES	(\$959,258.36)	(\$835,000.25)	(\$1,370,630.87)	(\$943,409.32)	(\$940,349.13)	(\$1,041,252.91)	(\$851,200.94)
BALANCING ENERGY	(\$153,061.40)	(\$63,532.11)	(\$52,353.06)	\$35,548.66	(\$3,538.85)	(\$55,807.33)	(\$102,741.49)
BALANCING LOSSES	(\$6,833.48)	(\$48,013.05)	(\$8,458.66)	(\$73,971.48)	(\$38,492.22)	(\$46,936.75)	(\$10,397.71)
BALANCING CONGESTION	\$235,985.34	(\$161,856.71)	\$824,929.63	\$389,863.65	(\$100,162.41)	(\$1,102,501.50)	(\$118,137.64)
FINACIAL IMPACT CHARGE	\$0.00	(\$369.29)	\$0.00	\$0.00	\$0.00	\$0.00	\$0.00
	13	14	15	16	17	18	19
DAM ENERGY	\$727,857.66	\$787,909.54	\$942,413.52	\$792,257.32	\$957,379.68	\$323,772.38	\$239,520.68
DAM LOSSES	(\$1,392,722.51)	(\$1,515,971.26)	(\$1,855,255.82)	(\$1,591,747.91)	(\$1,786,530.27)	(\$602,438.63)	(\$462,322.69)
BALANCING ENERGY	(\$83,270.47)	(\$69,631.88)	(\$96,439.16)	(\$17,641.69)	(\$71,478.60)	(\$9,926.28)	(\$9,300.02)
BALANCING LOSSES	(\$170,646.21)	(\$49,261.57)	\$13,214.67	(\$11,739.10)	(\$20,894.44)	(\$22,604.70)	(\$2,569.48)
BALANCING CONGESTION	(\$649,411.11)	\$490,336.83	\$110,543.95	(\$1,319.44)	\$149,868.94	(\$308,353.11)	(\$91,015.00)
FINACIAL IMPACT CHARGE	\$0.00	\$0.00	(\$58.63)	\$0.00	\$0.00	\$0.00	\$0.00
	20	21	22	23	24	25	26
DAM ENERGY	\$499,003.20	\$561,795.64	\$608,261.06	\$517,466.71	\$577,294.85	\$676,521.09	\$712,722.55
DAM LOSSES	(\$988,703.72)	(\$1,078,163.07)	(\$1,207,100.92)	(\$1,015,692.09)	(\$1,105,911.75)	(\$1,323,722.86)	(\$1,387,263.70)
BALANCING ENERGY	(\$25,077.10)	(\$12,290.65)	(\$37,054.13)	(\$50,289.96)	(\$94,997.76)	(\$92,736.25)	(\$121,432.52)
BALANCING LOSSES	(\$15,032.93)	(\$47,271.41)	(\$13,407.00)	\$11,108.23	(\$2,181.41)	(\$48,990.18)	(\$20,337.54)
BALANCING CONGESTION	(\$49,161.45)	\$22,111.23	\$14,059.05	\$74,799.47	(\$24,792.34)	(\$252,004.36)	\$55,233.94
FINACIAL IMPACT CHARGE	\$0.00	\$0.00	\$0.00	\$0.00	\$0.00	\$0.00	(\$16.31)
	27	28	29	30			
DAM ENERGY	\$665,661.67	\$602,934.05	\$660,894.84	\$841,170.17			
DAM LOSSES	(\$1,266,160.80)	(\$1,105,935.43)	(\$1,190,596.03)	(\$1,585,623.87)			
BALANCING ENERGY	(\$81,105.25)	(\$68,135.25)	(\$16,398.45)	(\$104,933.92)			
BALANCING LOSSES	(\$35,882.31)	(\$16,340.54)	(\$42,549.10)	(\$15,910.50)			
BALANCING CONGESTION	(\$160,630.27)	(\$1,489.30)	(\$51,111.24)	(\$27,846.96)			
FINACIAL IMPACT CHARGE	\$0.00	\$0.00	\$0.00	\$0.00			



SETTLEMENTS REPORT
 June 2022 Settlement Adjustment
 November 7, 2022

Initial Settlement – Market Costs Analysis

	MONDAY	TUESDAY	WEDNESDAY	THURSDAY	FRIDAY	SATURDAY	SUNDAY
			1	2	3	4	5
ENERGY			\$23,818,193.46	\$22,045,969.95	\$19,139,009.26	\$16,760,528.06	\$14,994,931.56
TRANSMISSION SERVICE			\$2,980,347.38	\$2,914,502.65	\$3,002,212.71	\$3,745,458.64	\$2,696,864.09
UPLIFT			\$235,317.28	\$375,186.72	\$302,042.05	\$260,244.66	\$303,047.12
RESIDUALS			(\$373,260.65)	(\$544,955.30)	(\$477,716.75)	(\$346,561.44)	\$230,176.23
ANCILLARY SERVICES			\$1,483,500.40	\$1,403,451.91	\$1,460,804.58	\$1,460,567.43	\$1,350,887.42
TCC			\$2,610,726.90	\$2,861,421.99	\$3,217,726.58	\$4,512,289.29	\$3,010,194.00
	6	7	8	9	10	11	12
ENERGY	\$20,691,634.03	\$20,658,853.24	\$24,568,476.49	\$25,118,188.29	\$21,033,093.76	\$18,508,530.17	\$16,629,015.18
TRANSMISSION SERVICE	\$2,843,420.59	\$3,546,068.12	\$3,011,331.09	\$3,989,245.59	\$3,692,898.54	\$2,513,437.12	\$2,670,230.87
UPLIFT	\$239,213.86	\$276,594.09	\$462,322.49	\$472,268.72	\$614,859.09	\$1,343,619.57	\$424,331.27
RESIDUALS	(\$368,197.53)	(\$659,294.98)	\$107,395.25	(\$75,862.79)	(\$574,823.36)	(\$1,668,676.53)	(\$642,452.79)
ANCILLARY SERVICES	\$1,496,051.02	\$1,593,614.20	\$1,571,636.17	\$1,595,692.03	\$1,476,465.76	\$1,346,632.39	\$1,397,567.24
TCC	\$2,978,361.97	\$3,974,561.14	\$3,239,336.53	\$4,486,241.17	\$4,130,299.74	\$2,614,627.05	\$2,481,102.00
	13	14	15	16	17	18	19
ENERGY	\$27,932,694.16	\$25,021,339.70	\$31,468,323.12	\$26,973,249.12	\$34,026,611.57	\$16,920,365.34	\$11,907,495.52
TRANSMISSION SERVICE	\$3,246,983.33	\$2,793,764.46	\$3,163,905.63	\$2,481,754.96	\$4,100,957.77	\$3,735,299.40	\$2,757,247.87
UPLIFT	\$666,175.34	\$283,777.35	\$174,556.01	\$218,200.52	\$321,042.11	\$260,641.13	\$249,722.66
RESIDUALS	(\$1,555,034.89)	(\$352,550.96)	(\$866,062.74)	(\$826,198.62)	(\$755,347.33)	(\$621,045.45)	(\$338,751.16)
ANCILLARY SERVICES	\$780,373.67	\$1,500,025.21	\$1,620,874.63	\$1,559,220.17	\$1,585,870.84	\$1,335,513.95	\$1,367,591.56
TCC	\$3,565,542.84	\$2,802,657.58	\$4,152,925.90	\$2,635,996.06	\$5,637,181.22	\$4,451,743.47	\$2,967,186.58
	20	21	22	23	24	25	26
ENERGY	\$16,121,307.05	\$20,045,780.53	\$20,835,332.52	\$18,109,214.85	\$20,054,157.32	\$25,556,740.34	\$27,039,986.29
TRANSMISSION SERVICE	\$2,248,066.48	\$2,336,201.94	\$2,073,496.78	\$2,020,418.59	\$1,993,311.44	\$1,975,829.01	\$2,039,668.44
UPLIFT	\$246,294.68	\$216,230.51	\$279,249.96	\$217,387.00	\$192,126.16	\$317,400.57	\$254,505.57
RESIDUALS	(\$578,867.72)	(\$547,160.15)	(\$628,685.17)	(\$455,159.96)	(\$644,482.87)	(\$1,013,718.73)	(\$748,229.60)
ANCILLARY SERVICES	\$1,331,639.87	\$1,476,576.52	\$1,429,827.92	\$1,384,228.65	\$1,426,854.78	\$1,584,179.62	\$1,672,009.18
TCC	\$1,678,289.88	\$1,760,594.97	\$1,464,500.85	\$988,364.78	\$1,350,099.73	\$848,805.31	\$816,027.16
	27	28	29	30			
ENERGY	\$23,958,556.88	\$17,947,969.45	\$20,828,291.24	\$28,669,382.57			
TRANSMISSION SERVICE	\$2,901,370.05	\$1,846,919.65	\$2,183,148.64	\$2,700,351.29			
UPLIFT	\$181,925.81	\$99,146.84	\$232,186.96	\$462,143.19			
RESIDUALS	(\$882,900.07)	(\$586,690.49)	(\$635,848.55)	(\$880,694.19)			
ANCILLARY SERVICES	\$1,556,549.28	\$1,386,823.62	\$1,436,642.86	\$1,541,922.11			
TCC	\$2,103,838.43	\$708,627.40	\$1,345,340.57	\$2,297,854.19			



SETTLEMENTS REPORT
 June 2022 Settlement Adjustment
 November 7, 2022

4-Month Settlement Adjustment – Market Costs Analysis

	MONDAY	TUESDAY	WEDNESDAY	THURSDAY	FRIDAY	SATURDAY	SUNDAY
			1	2	3	4	5
ENERGY			\$23,797,463.34	\$22,041,351.60	\$19,136,403.20	\$16,743,233.00	\$14,987,674.25
TRANSMISSION SERVICE			\$2,978,575.72	\$2,912,356.59	\$3,000,142.41	\$3,743,520.11	\$2,694,853.08
UPLIFT			\$235,317.29	\$375,186.73	\$302,042.09	\$260,037.19	\$303,047.02
RESIDUALS			(\$355,194.12)	(\$546,260.77)	(\$478,850.19)	(\$346,177.80)	\$227,272.96
ANCILLARY SERVICES			\$1,450,608.15	\$1,396,433.48	\$1,442,518.64	\$1,416,552.73	\$1,324,551.42
TCC			\$2,642,608.69	\$2,867,204.89	\$3,234,822.65	\$4,555,199.41	\$3,035,378.01
	6	7	8	9	10	11	12
ENERGY	\$20,693,202.68	\$20,672,981.83	\$24,569,713.73	\$25,131,241.01	\$21,023,824.95	\$18,504,365.00	\$16,620,278.09
TRANSMISSION SERVICE	\$2,841,960.85	\$3,543,731.49	\$3,008,542.75	\$3,986,840.29	\$3,690,694.54	\$2,511,652.93	\$2,668,743.28
UPLIFT	\$239,213.85	\$276,594.10	\$461,662.31	\$457,186.95	\$622,903.30	\$1,343,623.26	\$423,710.11
RESIDUALS	(\$370,368.50)	(\$659,670.62)	\$104,955.09	(\$87,655.09)	(\$581,401.41)	(\$1,671,219.91)	(\$641,573.39)
ANCILLARY SERVICES	\$1,469,943.75	\$1,566,988.12	\$1,551,352.12	\$1,574,586.51	\$1,456,769.48	\$1,387,077.74	\$1,385,636.56
TCC	\$3,003,646.77	\$3,999,920.77	\$3,258,066.75	\$4,506,031.29	\$4,148,737.12	\$2,573,167.94	\$2,492,204.62
	13	14	15	16	17	18	19
ENERGY	\$27,961,345.12	\$25,042,312.85	\$31,497,998.03	\$26,970,868.96	\$34,086,156.64	\$16,911,906.30	\$11,896,010.66
TRANSMISSION SERVICE	\$3,245,406.28	\$2,792,861.96	\$3,163,105.00	\$2,480,115.76	\$4,101,389.93	\$3,734,122.51	\$2,756,522.20
UPLIFT	\$630,246.23	\$283,193.51	\$174,080.07	\$256,820.10	\$321,075.77	\$260,618.70	\$249,722.66
RESIDUALS	(\$1,568,192.64)	(\$356,618.34)	(\$885,581.47)	(\$830,190.82)	(\$771,654.69)	(\$619,550.34)	(\$325,686.51)
ANCILLARY SERVICES	\$863,508.37	\$1,505,271.37	\$1,641,470.64	\$1,567,556.90	\$1,642,201.14	\$1,394,318.97	\$1,340,363.23
TCC	\$3,481,569.55	\$2,796,982.57	\$4,131,923.07	\$2,626,720.66	\$5,581,344.11	\$4,392,365.16	\$2,994,188.97
	20	21	22	23	24	25	26
ENERGY	\$16,113,287.81	\$20,049,067.42	\$20,828,855.79	\$18,103,727.29	\$20,046,275.23	\$25,554,976.22	\$27,025,605.84
TRANSMISSION SERVICE	\$2,246,270.81	\$2,334,580.28	\$2,071,807.05	\$2,018,718.27	\$1,991,548.98	\$1,973,430.53	\$2,037,811.11
UPLIFT	\$246,294.68	\$216,230.50	\$279,249.96	\$217,387.00	\$192,126.17	\$317,509.26	\$258,716.33
RESIDUALS	(\$578,972.00)	(\$553,818.26)	(\$635,241.94)	(\$462,607.64)	(\$650,588.41)	(\$1,040,932.56)	(\$761,093.58)
ANCILLARY SERVICES	\$1,332,935.09	\$1,468,222.99	\$1,435,441.48	\$1,380,668.18	\$1,433,840.46	\$1,590,885.04	\$1,675,071.71
TCC	\$1,675,972.39	\$1,768,001.68	\$1,457,857.82	\$990,890.37	\$1,342,042.49	\$840,565.87	\$811,790.18
	27	28	29	30			
ENERGY	\$23,942,100.11	\$17,934,726.42	\$20,815,498.07	\$28,661,354.32			
TRANSMISSION SERVICE	\$2,900,131.39	\$1,844,865.10	\$2,180,786.16	\$2,698,393.63			
UPLIFT	\$181,923.00	\$101,116.61	\$232,187.08	\$462,015.00			
RESIDUALS	(\$878,116.96)	(\$588,966.47)	(\$639,759.98)	(\$893,145.08)			
ANCILLARY SERVICES	\$1,598,869.70	\$1,390,908.68	\$1,453,030.14	\$1,541,848.82			
TCC	\$2,060,766.71	\$703,303.57	\$1,327,529.95	\$2,296,752.30			

