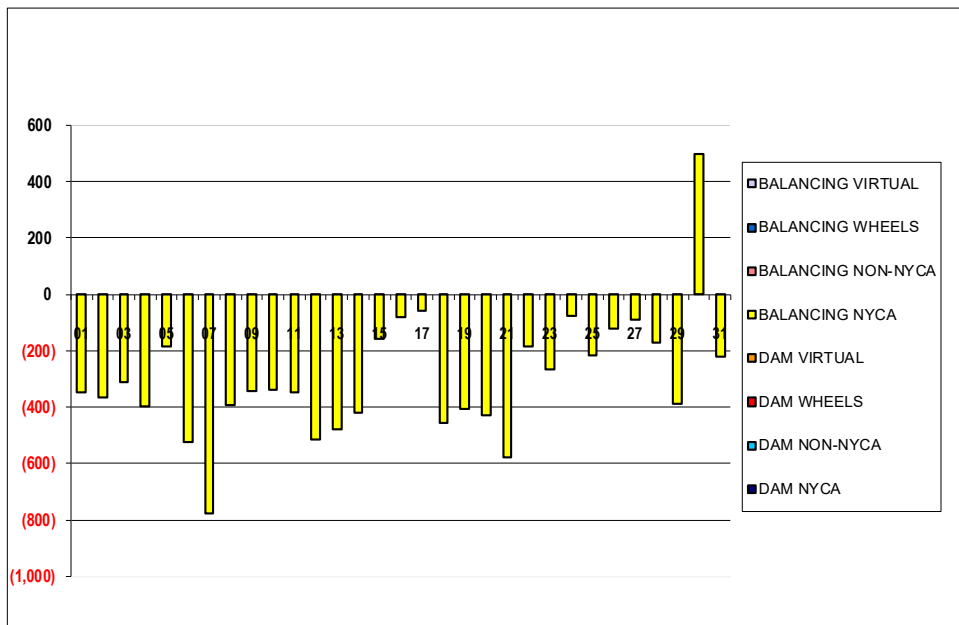


SETTLEMENTS REPORT
 July 2022 Settlement Adjustment
 December 7, 2022

Settlement Adjustment – Market Supply Delta Analysis

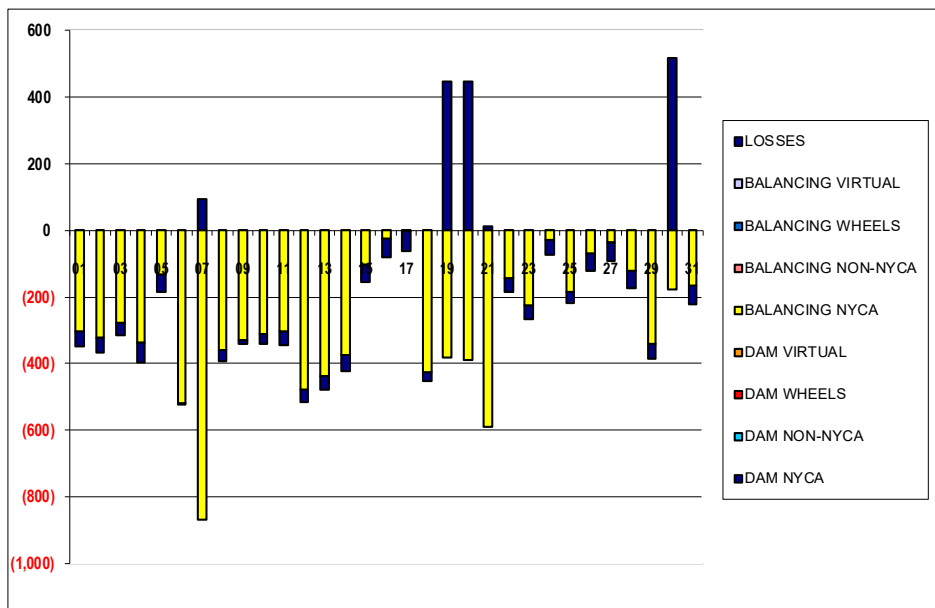
	MONDAY	TUESDAY	WEDNESDAY	THURSDAY	FRIDAY	SATURDAY	SUNDAY
					1	2	3
DAM NYCA					0	0	0
DAM NON-NYCA					0	0	0
DAM WHEELS					0	0	0
DAM VIRTUAL					0	0	0
BALANCING NYCA					(349)	(365)	(314)
BALANCING NON-NYCA					0	0	0
BALANCING WHEELS					0	0	0
BALANCING VIRTUAL					0	0	0
	4	5	6	7	8	9	10
DAM NYCA	0	0	0	0	0	0	0
DAM NON-NYCA	0	0	0	0	0	0	0
DAM WHEELS	0	0	0	0	0	0	0
DAM VIRTUAL	0	0	0	0	0	0	0
BALANCING NYCA	(398)	(185)	(524)	(776)	(392)	(341)	(341)
BALANCING NON-NYCA	0	0	0	0	0	0	0
BALANCING WHEELS	0	0	0	0	0	0	0
BALANCING VIRTUAL	0	0	0	0	0	0	0
	11	12	13	14	15	16	17
DAM NYCA	0	0	0	0	0	0	0
DAM NON-NYCA	0	0	0	0	0	0	0
DAM WHEELS	0	0	0	0	0	0	0
DAM VIRTUAL	0	0	0	0	0	0	0
BALANCING NYCA	(346)	(514)	(480)	(421)	(155)	(81)	(60)
BALANCING NON-NYCA	0	0	0	0	0	0	0
BALANCING WHEELS	0	0	0	0	0	0	0
BALANCING VIRTUAL	0	0	0	0	0	0	0
	18	19	20	21	22	23	24
DAM NYCA	0	0	0	0	0	0	0
DAM NON-NYCA	0	0	0	0	0	0	0
DAM WHEELS	0	0	0	0	0	0	0
DAM VIRTUAL	0	0	0	0	0	0	0
BALANCING NYCA	(454)	(404)	(429)	(577)	(183)	(268)	(75)
BALANCING NON-NYCA	0	0	0	0	0	0	0
BALANCING WHEELS	0	0	0	0	0	0	0
BALANCING VIRTUAL	0	0	0	0	0	0	0
	25	26	27	28	29	30	31
DAM NYCA	0	0	0	0	0	0	0
DAM NON-NYCA	0	0	0	0	0	0	0
DAM WHEELS	0	0	0	0	0	0	0
DAM VIRTUAL	0	0	0	0	0	0	0
BALANCING NYCA	(218)	(123)	(92)	(173)	(387)	499	(221)
BALANCING NON-NYCA	0	0	0	0	0	0	0
BALANCING WHEELS	0	0	0	0	0	0	0
BALANCING VIRTUAL	0	0	0	0	0	0	0



SETTLEMENTS REPORT
 July 2022 Settlement Adjustment
 December 7, 2022

Settlement Adjustment – Market Withdrawals Delta Analysis

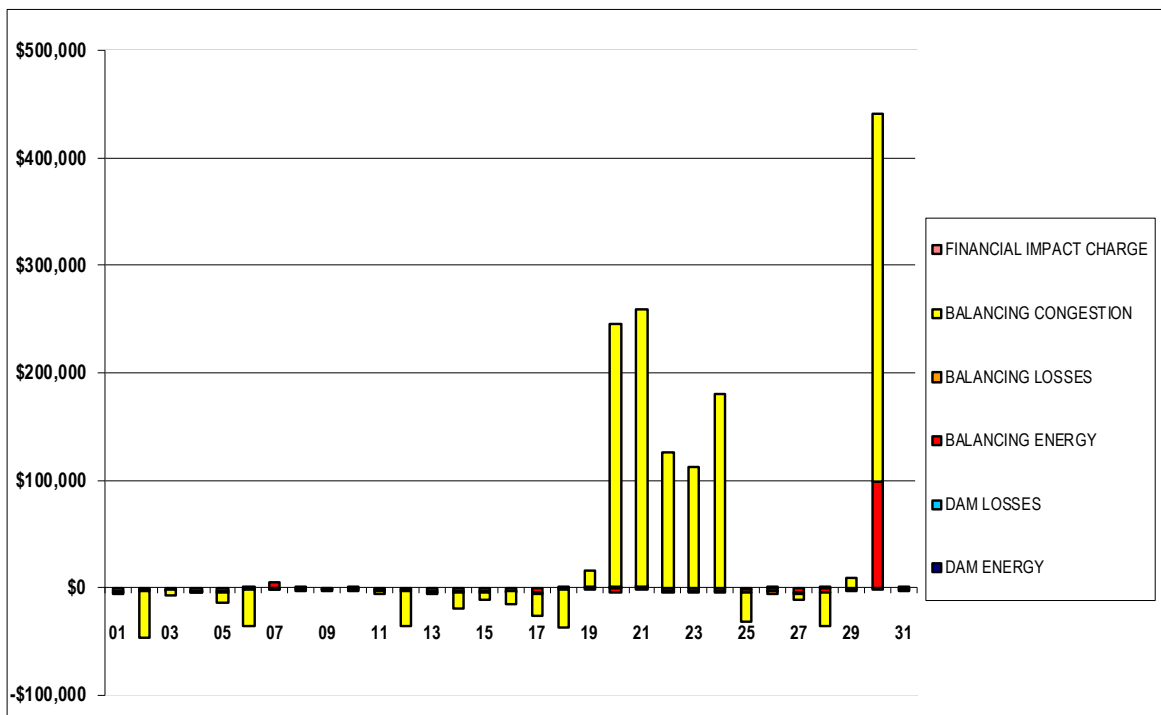
	MONDAY	TUESDAY	WEDNESDAY	THURSDAY	FRIDAY	SATURDAY	SUNDAY
					1	2	3
DAM NYCA					0	0	0
DAM NON-NYCA					0	0	0
DAM WHEELS					0	0	0
DAM VIRTUAL					0	0	0
BALANCING NYCA					(306)	(321)	(279)
BALANCING NON-NYCA					0	0	0
BALANCING WHEELS					0	0	0
BALANCING VIRTUAL					0	0	0
UFE/LOSSES					(44)	(44)	(35)
	4	5	6	7	8	9	10
DAM NYCA	0	0	0	0	0	0	0
DAM NON-NYCA	0	0	0	0	0	0	0
DAM WHEELS	0	0	0	0	0	0	0
DAM VIRTUAL	0	0	0	0	0	0	0
BALANCING NYCA	(337)	(134)	(520)	(868)	(358)	(330)	(310)
BALANCING NON-NYCA	0	0	0	0	0	0	0
BALANCING WHEELS	0	0	0	0	0	0	0
BALANCING VIRTUAL	0	0	0	0	0	0	0
UFE/LOSSES	(61)	(51)	(5)	93	(34)	(11)	(31)
	11	12	13	14	15	16	17
DAM NYCA	0	0	0	0	0	0	0
DAM NON-NYCA	0	0	0	0	0	0	0
DAM WHEELS	0	0	0	0	0	0	0
DAM VIRTUAL	0	0	0	0	0	0	0
BALANCING NYCA	(304)	(480)	(437)	(374)	(104)	(27)	(3)
BALANCING NON-NYCA	0	0	0	0	0	0	0
BALANCING WHEELS	0	0	0	0	0	0	0
BALANCING VIRTUAL	0	0	0	0	0	0	0
UFE/LOSSES	(41)	(34)	(43)	(47)	(52)	(55)	(58)
	18	19	20	21	22	23	24
DAM NYCA	0	0	0	0	0	0	0
DAM NON-NYCA	0	0	0	0	0	0	0
DAM WHEELS	0	0	0	0	0	0	0
DAM VIRTUAL	0	0	0	0	0	0	0
BALANCING NYCA	(426)	(381)	(388)	(590)	(145)	(225)	(27)
BALANCING NON-NYCA	0	0	0	0	0	0	0
BALANCING WHEELS	0	0	0	0	0	0	0
BALANCING VIRTUAL	0	0	0	0	0	0	0
UFE/LOSSES	(28)	448	447	13	(38)	(43)	(48)
	25	26	27	28	29	30	31
DAM NYCA	0	0	0	0	0	0	0
DAM NON-NYCA	0	0	0	0	0	0	0
DAM WHEELS	0	0	0	0	0	0	0
DAM VIRTUAL	0	0	0	0	0	0	0
BALANCING NYCA	(184)	(71)	(35)	(123)	(341)	(179)	(168)
BALANCING NON-NYCA	0	0	0	0	0	0	0
BALANCING WHEELS	0	0	0	0	0	0	0
BALANCING VIRTUAL	0	0	0	0	0	0	0
UFE/LOSSES	(34)	(52)	(57)	(50)	(46)	517	(53)



SETTLEMENTS REPORT
 July 2022 Settlement Adjustment
 December 7, 2022

Settlement Adjustment – Market Residuals Delta Analysis

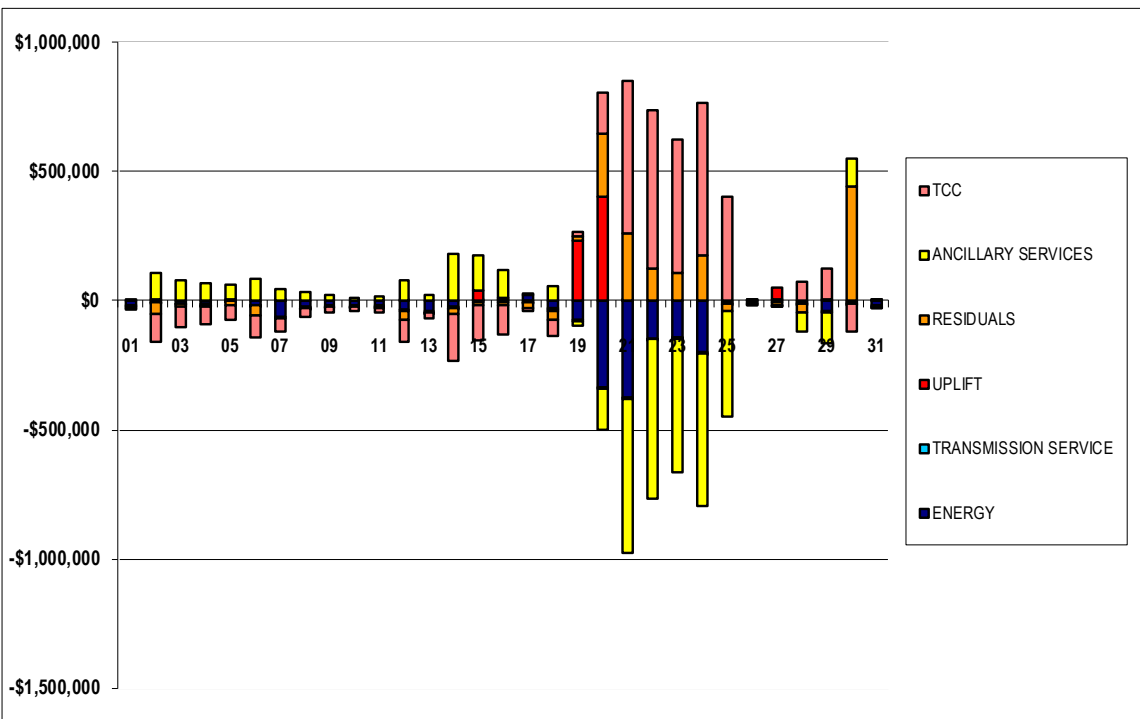
	MONDAY	TUESDAY	WEDNESDAY	THURSDAY	FRIDAY	SATURDAY	SUNDAY
					1	2	3
DAM ENERGY					\$0.00	\$0.00	(\$0.01)
DAM LOSSES					(\$0.01)	\$0.00	\$0.00
BALANCING ENERGY					(\$3,045.59)	(\$2,578.09)	(\$1,668.26)
BALANCING LOSSES					(\$1,341.04)	(\$1,127.65)	(\$872.79)
BALANCING CONGESTION					(\$1,141.48)	(\$43,109.35)	(\$4,394.22)
FINANCIAL IMPACT CHARGE					\$0.00	\$0.00	\$0.00
	4	5	6	7	8	9	10
DAM ENERGY	\$0.01	\$0.00	\$0.00	\$0.00	\$0.00	\$0.00	\$0.00
DAM LOSSES	\$0.00	(\$0.01)	\$0.01	\$0.00	\$0.01	\$0.01	\$0.00
BALANCING ENERGY	(\$2,703.69)	(\$3,101.64)	\$295.06	\$5,142.38	(\$2,420.92)	(\$1,050.14)	(\$1,475.15)
BALANCING LOSSES	(\$851.23)	(\$1,817.63)	(\$2,115.00)	(\$181.94)	\$140.97	(\$1,513.70)	(\$636.37)
BALANCING CONGESTION	(\$1,349.70)	(\$9,038.81)	(\$34,396.53)	(\$2,363.91)	(\$1,137.13)	(\$428.47)	\$440.38
FINANCIAL IMPACT CHARGE	\$0.00	\$0.00	\$0.01	\$0.00	\$0.00	\$0.00	\$0.00
	11	12	13	14	15	16	17
DAM ENERGY	\$0.00	\$0.01	(\$0.01)	\$0.00	\$0.00	\$0.00	\$0.00
DAM LOSSES	\$0.01	\$0.01	(\$0.01)	(\$0.01)	\$0.00	\$0.00	\$0.00
BALANCING ENERGY	(\$2,371.95)	(\$2,027.80)	(\$3,109.92)	(\$3,258.74)	(\$3,173.44)	(\$2,937.52)	(\$4,699.77)
BALANCING LOSSES	(\$764.59)	(\$868.30)	(\$990.50)	(\$1,124.66)	(\$1,410.93)	(\$855.08)	(\$1,201.87)
BALANCING CONGESTION	(\$2,237.27)	(\$32,525.18)	(\$488.69)	(\$14,605.67)	(\$7,401.86)	(\$11,651.43)	(\$20,513.98)
FINANCIAL IMPACT CHARGE	\$0.00	\$0.00	\$0.00	\$0.00	\$0.01	\$0.00	\$0.00
	18	19	20	21	22	23	24
DAM ENERGY	\$0.00	\$0.00	\$0.00	\$0.00	(\$0.01)	\$0.00	\$0.00
DAM LOSSES	\$0.00	\$0.00	\$0.00	\$0.00	\$0.00	\$0.01	\$0.00
BALANCING ENERGY	(\$2,074.80)	(\$2,033.09)	(\$4,863.30)	\$1,055.56	(\$2,856.23)	(\$3,405.90)	(\$3,376.54)
BALANCING LOSSES	\$222.88	\$518.21	\$220.21	\$366.30	(\$251.38)	(\$567.03)	(\$636.14)
BALANCING CONGESTION	(\$34,730.70)	\$15,001.37	\$244,812.64	\$257,952.16	\$126,210.40	\$112,061.68	\$180,858.60
FINANCIAL IMPACT CHARGE	\$0.00	\$0.00	\$0.00	(\$0.11)	\$0.00	\$0.00	\$0.00
	25	26	27	28	29	30	31
DAM ENERGY	\$0.01	(\$0.01)	\$0.00	\$0.00	\$0.00	\$0.00	\$0.01
DAM LOSSES	\$0.00	\$0.00	\$0.01	\$0.00	\$0.00	\$0.00	\$0.00
BALANCING ENERGY	(\$2,216.85)	(\$3,141.77)	(\$4,551.89)	(\$4,810.43)	(\$2,581.74)	\$98,033.05	(\$1,904.92)
BALANCING LOSSES	(\$2,220.90)	(\$2,267.00)	(\$1,734.66)	\$1,441.91	(\$426.23)	(\$710.73)	(\$480.41)
BALANCING CONGESTION	(\$27,956.59)	\$889.52	(\$5,661.40)	(\$31,173.28)	\$9,022.29	\$343,145.33	\$499.36
FINANCIAL IMPACT CHARGE	\$0.00	\$0.00	\$0.00	\$0.00	\$0.01	\$0.00	\$0.00



SETTLEMENTS REPORT
 July 2022 Settlement Adjustment
 December 7, 2022

Settlement Adjustment – Market Costs Delta Analysis

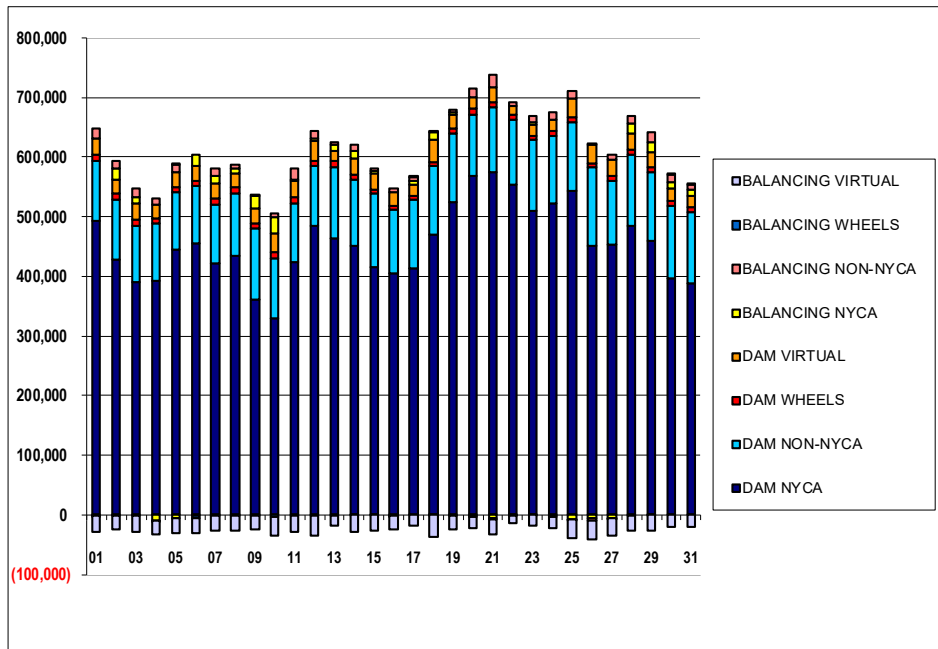
	MONDAY	TUESDAY	WEDNESDAY	THURSDAY	FRIDAY	SATURDAY	SUNDAY
					1	2	3
ENERGY					(\$19,328.40)	\$3,605.74	(\$10,284.98)
TRANSMISSION SERVICE					(\$3,948.24)	(\$5,008.05)	(\$3,851.65)
UPLIFT					(\$0.02)	(\$17.33)	(\$0.05)
RESIDUALS					(\$5,528.12)	(\$46,815.09)	(\$6,935.28)
ANCILLARY SERVICES					(\$8,163.64)	\$104,602.69	\$79,680.63
TCC					\$6,786.09	(\$106,328.03)	(\$80,914.91)
	4	5	6	7	8	9	10
ENERGY	(\$12,999.89)	\$3,279.83	(\$14,541.35)	(\$64,777.35)	(\$23,219.29)	(\$18,088.96)	(\$18,504.31)
TRANSMISSION SERVICE	(\$4,302.44)	(\$2,785.17)	(\$4,537.71)	(\$6,053.43)	(\$3,480.74)	(\$3,681.76)	(\$4,305.50)
UPLIFT	(\$7.98)	(\$2.28)	(\$926.08)	\$29.19	(\$53.42)	(\$84.31)	(\$75.16)
RESIDUALS	(\$4,904.61)	(\$13,958.09)	(\$36,216.45)	\$2,596.53	(\$3,417.07)	(\$2,992.30)	(\$1,671.14)
ANCILLARY SERVICES	\$66,285.12	\$58,349.64	\$86,857.65	\$44,844.63	\$32,640.98	\$19,798.47	\$11,262.57
TCC	(\$67,799.27)	(\$59,278.39)	(\$88,517.82)	(\$46,995.76)	(\$33,823.77)	(\$20,998.09)	(\$12,738.52)
	11	12	13	14	15	16	17
ENERGY	(\$16,944.18)	(\$35,136.15)	(\$39,322.75)	(\$25,028.18)	\$1,038.41	\$7,846.62	\$19,820.23
TRANSMISSION SERVICE	(\$3,882.19)	(\$5,425.17)	(\$4,121.13)	(\$4,993.59)	(\$3,214.79)	(\$3,608.72)	(\$4,401.35)
UPLIFT	(\$109.02)	\$167.44	(\$192.38)	(\$232.72)	\$38,022.16	\$1,453.08	(\$167.88)
RESIDUALS	(\$5,373.80)	(\$35,421.26)	(\$4,589.13)	(\$18,989.08)	(\$11,986.22)	(\$15,444.03)	(\$26,415.62)
ANCILLARY SERVICES	\$18,891.58	\$80,927.31	\$20,732.32	\$182,683.53	\$137,330.25	\$110,468.83	\$8,849.54
TCC	(\$20,243.05)	(\$82,850.28)	(\$22,203.28)	(\$184,444.15)	(\$138,403.37)	(\$111,651.82)	(\$10,279.71)
	18	19	20	21	22	23	24
ENERGY	(\$25,767.35)	(\$73,068.58)	(\$333,055.24)	(\$376,612.69)	(\$145,503.34)	(\$140,932.69)	(\$199,327.68)
TRANSMISSION SERVICE	(\$6,627.02)	(\$5,979.90)	(\$5,763.95)	(\$6,587.03)	(\$4,957.26)	(\$2,761.37)	(\$2,580.74)
UPLIFT	(\$7,440.99)	\$235,365.98	\$404,459.51	\$77.01	(\$3.83)	(\$2,602.82)	(\$1.28)
RESIDUALS	(\$36,582.62)	\$13,486.49	\$240,169.55	\$259,373.91	\$123,102.78	\$108,088.76	\$176,845.92
ANCILLARY SERVICES	\$59,274.23	(\$17,706.40)	(\$163,586.21)	(\$591,642.63)	(\$616,346.95)	(\$517,726.03)	(\$593,006.14)
TCC	(\$61,226.54)	\$15,457.13	\$161,418.64	\$589,319.56	\$614,696.04	\$516,770.99	\$592,152.49
	25	26	27	28	29	30	31
ENERGY	(\$4,398.78)	(\$4,611.88)	\$3,363.28	(\$6,597.98)	(\$42,152.06)	(\$4,486.42)	(\$16,478.42)
TRANSMISSION SERVICE	(\$5,034.34)	(\$4,983.40)	(\$3,236.26)	(\$4,467.10)	(\$3,913.44)	(\$4,371.34)	(\$4,489.52)
UPLIFT	(\$2.06)	\$1,269.36	\$46,511.47	(\$50.29)	(\$0.01)	(\$85.42)	\$6.60
RESIDUALS	(\$32,394.33)	(\$4,519.26)	(\$11,947.94)	(\$34,541.80)	\$6,014.33	\$440,467.65	(\$1,885.96)
ANCILLARY SERVICES	(\$404,553.29)	\$3,323.31	(\$245.65)	(\$75,826.73)	(\$118,224.18)	\$111,281.19	(\$2,229.87)
TCC	\$402,855.77	(\$4,976.19)	(\$853.28)	\$74,308.92	\$116,826.89	(\$111,503.93)	\$691.17



SETTLEMENTS REPORT
 July 2022 Settlement Adjustment
 December 7, 2022

Initial Settlement – Market Supply Analysis

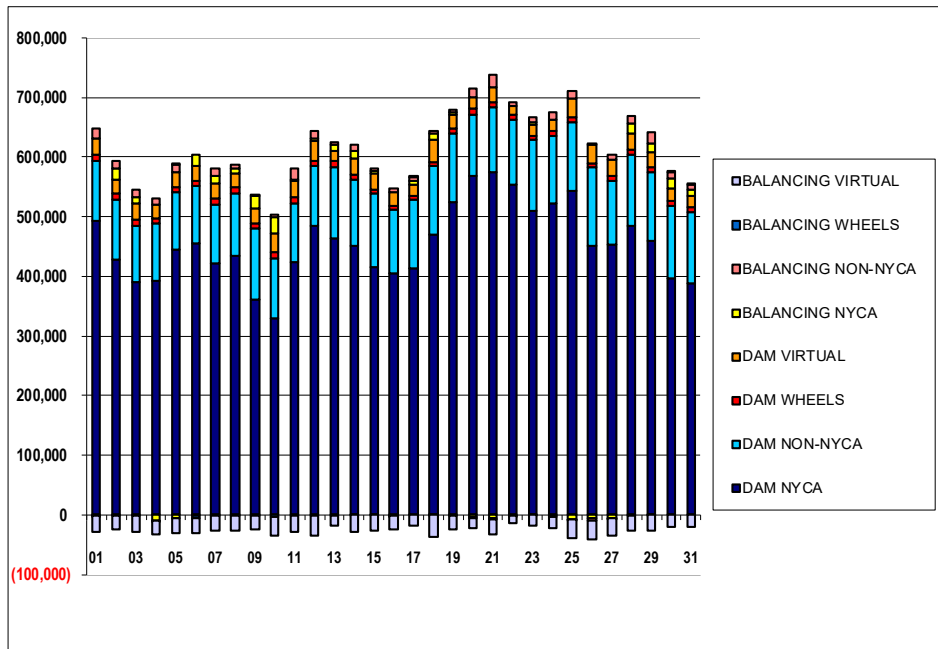
	MONDAY	TUESDAY	WEDNESDAY	THURSDAY	FRIDAY	SATURDAY	SUNDAY
					1	2	3
DAM NYCA					493,924	427,170	390,182
DAM NON-NYCA					100,017	102,020	94,796
DAM WHEELS					9,625	9,525	9,321
DAM VIRTUAL					27,042	24,084	28,319
BALANCING NYCA					(773)	17,715	10,419
BALANCING NON-NYCA					17,052	13,893	13,672
BALANCING WHEELS					(100)	(275)	(496)
BALANCING VIRTUAL					(27,042)	(24,084)	(28,319)
	4	5	6	7	8	9	10
DAM NYCA	391,706	445,413	455,586	422,826	435,139	361,354	328,700
DAM NON-NYCA	96,952	94,841	95,093	97,759	103,490	119,662	101,755
DAM WHEELS	8,588	9,209	9,403	9,575	10,297	8,400	10,379
DAM VIRTUAL	24,080	25,526	25,461	26,480	24,641	23,614	32,214
BALANCING NYCA	(8,796)	(5,669)	18,347	12,307	6,917	21,628	25,669
BALANCING NON-NYCA	9,499	12,504	(2,265)	11,984	7,256	2,081	6,175
BALANCING WHEELS	(150)	26	(3,159)	(950)	(1,647)	(1,025)	(3,179)
BALANCING VIRTUAL	(24,080)	(25,526)	(25,461)	(26,480)	(24,641)	(23,614)	(32,214)
	11	12	13	14	15	16	17
DAM NYCA	423,653	483,754	464,290	451,857	415,411	404,430	414,320
DAM NON-NYCA	99,327	100,429	119,521	110,772	123,304	106,757	114,369
DAM WHEELS	10,248	10,000	9,000	7,575	7,253	7,740	7,200
DAM VIRTUAL	26,413	33,163	17,035	28,303	26,380	22,500	18,941
BALANCING NYCA	2,597	3,460	10,439	11,763	4,525	(1,376)	5,266
BALANCING NON-NYCA	19,768	14,117	4,416	11,168	3,453	5,578	6,986
BALANCING WHEELS	(1,123)	(875)	(1,025)	(9)	(53)	(540)	100
BALANCING VIRTUAL	(26,413)	(33,163)	(17,035)	(28,303)	(26,380)	(22,500)	(18,941)
	18	19	20	21	22	23	24
DAM NYCA	470,514	525,171	568,393	575,110	553,161	509,944	522,237
DAM NON-NYCA	113,768	114,593	103,463	107,731	110,616	118,613	114,244
DAM WHEELS	7,275	8,055	10,101	8,532	7,724	7,430	7,864
DAM VIRTUAL	37,139	22,809	17,646	26,009	13,746	17,580	18,904
BALANCING NYCA	12,170	4,665	(1,928)	(5,563)	(154)	4,971	(1,908)
BALANCING NON-NYCA	3,868	4,802	16,360	19,947	7,059	9,451	12,482
BALANCING WHEELS	(75)	(670)	(2,130)	(1,332)	(504)	(230)	(664)
BALANCING VIRTUAL	(37,139)	(22,809)	(17,646)	(26,009)	(13,746)	(17,580)	(18,904)
	25	26	27	28	29	30	31
DAM NYCA	543,401	451,118	452,795	484,293	458,623	397,605	389,012
DAM NON-NYCA	115,205	131,666	106,433	120,301	116,763	121,516	119,206
DAM WHEELS	7,600	7,200	8,816	7,847	7,234	7,788	7,200
DAM VIRTUAL	31,486	31,235	27,486	26,438	26,109	20,092	20,109
BALANCING NYCA	(7,348)	(6,396)	(4,798)	16,783	15,362	11,343	9,238
BALANCING NON-NYCA	14,016	(3,811)	8,489	14,264	17,364	11,589	8,923
BALANCING WHEELS	(398)	425	(1,566)	(642)	(33)	140	100
BALANCING VIRTUAL	(31,486)	(31,235)	(27,486)	(26,438)	(26,109)	(20,092)	(20,109)



SETTLEMENTS REPORT
 July 2022 Settlement Adjustment
 December 7, 2022

4-Month Settlement Adjustment – Market Supply Analysis

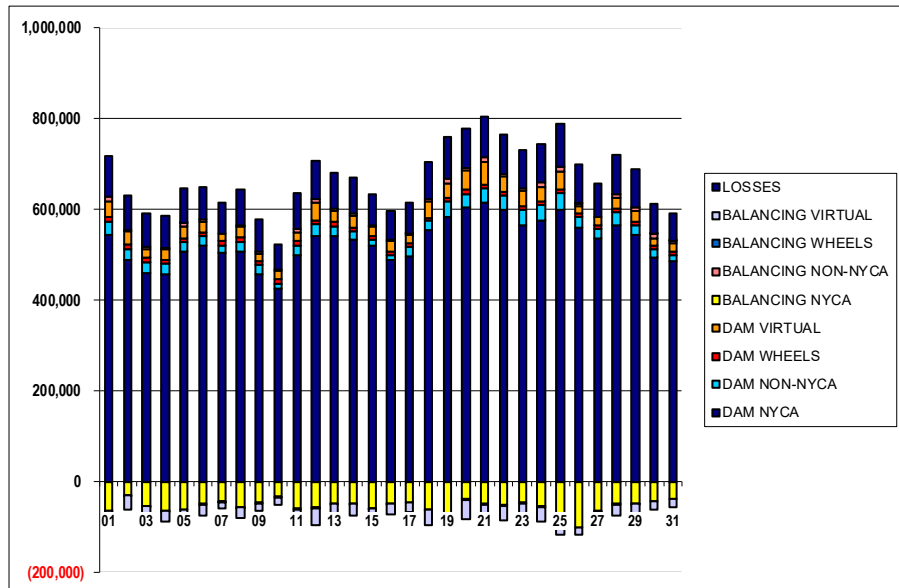
	MONDAY	TUESDAY	WEDNESDAY	THURSDAY	FRIDAY	SATURDAY	SUNDAY
					1	2	3
DAM NYCA					493,924	427,170	390,182
DAM NON-NYCA					100,017	102,020	94,796
DAM WHEELS					9,625	9,525	9,321
DAM VIRTUAL					27,042	24,084	28,319
BALANCING NYCA					(1,122)	17,350	10,106
BALANCING NON-NYCA					17,052	13,893	13,672
BALANCING WHEELS					(100)	(275)	(496)
BALANCING VIRTUAL					(27,042)	(24,084)	(28,319)
	4	5	6	7	8	9	10
DAM NYCA	391,706	445,413	455,586	422,826	435,139	361,354	328,700
DAM NON-NYCA	96,952	94,841	95,093	97,759	103,490	119,662	101,755
DAM WHEELS	8,588	9,209	9,403	9,575	10,297	8,400	10,379
DAM VIRTUAL	24,080	25,526	25,461	26,480	24,641	23,614	32,214
BALANCING NYCA	(9,194)	(5,854)	17,823	11,531	6,525	21,286	25,328
BALANCING NON-NYCA	9,499	12,504	(2,265)	11,984	7,256	2,081	6,175
BALANCING WHEELS	(150)	26	(3,159)	(950)	(1,647)	(1,025)	(3,179)
BALANCING VIRTUAL	(24,080)	(25,526)	(25,461)	(26,480)	(24,641)	(23,614)	(32,214)
	11	12	13	14	15	16	17
DAM NYCA	423,653	483,754	464,290	451,857	415,411	404,430	414,320
DAM NON-NYCA	99,327	100,429	119,521	110,772	123,304	106,757	114,369
DAM WHEELS	10,248	10,000	9,000	7,575	7,253	7,740	7,200
DAM VIRTUAL	26,413	33,163	17,035	28,303	26,380	22,500	18,941
BALANCING NYCA	2,251	2,946	9,959	11,342	4,369	(1,458)	5,205
BALANCING NON-NYCA	19,768	14,117	4,416	11,168	3,453	5,578	6,986
BALANCING WHEELS	(1,123)	(875)	(1,025)	(9)	(53)	(540)	100
BALANCING VIRTUAL	(26,413)	(33,163)	(17,035)	(28,303)	(26,380)	(22,500)	(18,941)
	18	19	20	21	22	23	24
DAM NYCA	470,514	525,171	568,393	575,110	553,161	509,944	522,237
DAM NON-NYCA	113,768	114,593	103,463	107,731	110,616	118,613	114,244
DAM WHEELS	7,275	8,055	10,101	8,532	7,724	7,430	7,864
DAM VIRTUAL	37,139	22,809	17,646	26,009	13,746	17,580	18,904
BALANCING NYCA	11,716	4,261	(2,357)	(6,140)	(338)	4,703	(1,983)
BALANCING NON-NYCA	3,868	4,802	16,360	19,947	7,059	9,451	12,482
BALANCING WHEELS	(75)	(670)	(2,130)	(1,332)	(504)	(230)	(664)
BALANCING VIRTUAL	(37,139)	(22,809)	(17,646)	(26,009)	(13,746)	(17,580)	(18,904)
	25	26	27	28	29	30	31
DAM NYCA	543,401	451,118	452,795	484,293	458,623	397,605	389,012
DAM NON-NYCA	115,205	131,666	106,433	120,301	116,763	121,516	119,206
DAM WHEELS	7,600	7,200	8,816	7,847	7,234	7,788	7,200
DAM VIRTUAL	31,486	31,235	27,486	26,438	26,109	20,092	20,109
BALANCING NYCA	(7,566)	(6,519)	(4,890)	16,610	14,975	16,335	9,017
BALANCING NON-NYCA	14,016	(3,811)	8,489	14,264	17,364	11,589	8,923
BALANCING WHEELS	(398)	425	(1,566)	(642)	(33)	140	100
BALANCING VIRTUAL	(31,486)	(31,235)	(27,486)	(26,438)	(26,109)	(20,092)	(20,109)



SETTLEMENTS REPORT
July 2022 Settlement Adjustment
December 7, 2022

Initial Settlement – Market Withdrawals Analysis

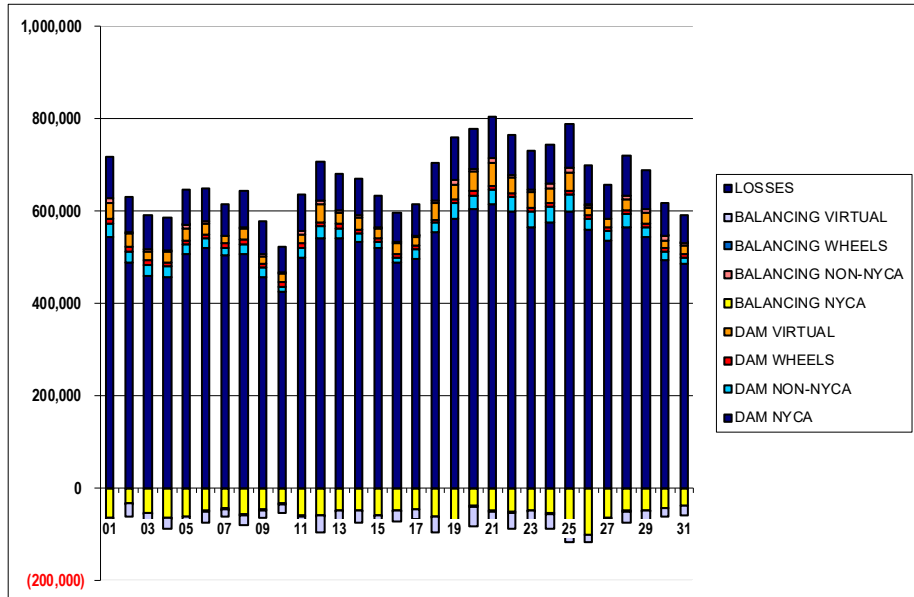
	MONDAY	TUESDAY	WEDNESDAY	THURSDAY	FRIDAY	SATURDAY	SUNDAY
					1	2	3
DAM NYCA					544,107	487,825	459,459
DAM NON-NYCA					28,268	23,864	23,378
DAM WHEELS					9,625	9,525	9,321
DAM VIRTUAL					34,582	29,239	19,348
BALANCING NYCA					(62,824)	(30,982)	(52,912)
BALANCING NON-NYCA					9,588	3,943	5,740
BALANCING WHEELS					(100)	(275)	(496)
BALANCING VIRTUAL					(34,582)	(29,239)	(19,348)
UFE/LOSSES					91,081	76,148	73,405
	4	5	6	7	8	9	10
DAM NYCA	456,060	506,893	520,349	502,643	506,664	455,367	425,270
DAM NON-NYCA	23,229	19,551	19,628	17,952	21,519	21,057	11,019
DAM WHEELS	8,588	9,209	9,403	9,575	10,297	8,400	10,379
DAM VIRTUAL	23,045	27,298	24,174	14,612	23,274	16,780	16,610
BALANCING NYCA	(64,150)	(62,413)	(47,932)	(43,254)	(55,651)	(46,685)	(32,242)
BALANCING NON-NYCA	3,415	7,128	3,273	(699)	2,888	4,213	2,546
BALANCING WHEELS	(150)	26	(3,159)	(950)	(1,647)	(1,025)	(3,179)
BALANCING VIRTUAL	(23,045)	(27,298)	(24,174)	(14,612)	(23,274)	(16,780)	(16,610)
UFE/LOSSES	70,808	75,931	71,442	68,233	77,383	70,772	55,707
	11	12	13	14	15	16	17
DAM NYCA	499,090	540,477	540,294	532,398	520,021	487,726	496,667
DAM NON-NYCA	20,276	25,699	22,064	19,294	12,150	11,198	19,836
DAM WHEELS	10,248	10,000	9,000	7,575	7,253	7,740	7,200
DAM VIRTUAL	19,459	38,012	25,219	27,210	21,903	24,380	20,088
BALANCING NYCA	(59,760)	(57,498)	(47,340)	(48,114)	(57,695)	(47,393)	(46,100)
BALANCING NON-NYCA	7,013	6,815	3,425	4,049	3,350	2,523	2,144
BALANCING WHEELS	(1,123)	(875)	(1,025)	(9)	(53)	(540)	100
BALANCING VIRTUAL	(19,459)	(38,012)	(25,219)	(27,210)	(21,903)	(24,380)	(20,088)
UFE/LOSSES	78,725	86,267	80,223	77,933	68,866	61,333	68,394
	18	19	20	21	22	23	24
DAM NYCA	553,795	583,984	604,365	615,210	597,421	565,368	575,302
DAM NON-NYCA	20,354	33,305	28,503	29,514	33,000	34,465	34,261
DAM WHEELS	7,275	8,055	10,101	8,532	7,724	7,430	7,864
DAM VIRTUAL	34,431	32,115	43,058	49,552	34,050	32,363	32,366
BALANCING NYCA	(60,919)	(69,483)	(37,767)	(48,477)	(51,900)	(47,025)	(54,749)
BALANCING NON-NYCA	6,994	9,583	5,094	11,276	5,642	6,398	8,238
BALANCING WHEELS	(75)	(670)	(2,130)	(1,332)	(504)	(230)	(664)
BALANCING VIRTUAL	(34,431)	(32,115)	(43,058)	(49,552)	(34,050)	(32,363)	(32,366)
UFE/LOSSES	80,097	91,842	86,093	89,702	86,519	83,774	84,004
	25	26	27	28	29	30	31
DAM NYCA	599,218	557,913	536,245	564,576	542,359	493,593	486,026
DAM NON-NYCA	35,488	24,650	19,697	27,435	21,383	17,159	12,264
DAM WHEELS	7,600	7,200	8,816	7,847	7,234	7,788	7,200
DAM VIRTUAL	40,853	17,587	18,697	25,764	23,766	17,507	18,737
BALANCING NYCA	(74,222)	(100,195)	(64,282)	(49,329)	(48,784)	(43,835)	(38,662)
BALANCING NON-NYCA	9,041	5,507	(473)	6,467	9,070	9,337	6,713
BALANCING WHEELS	(398)	425	(1,566)	(642)	(33)	140	100
BALANCING VIRTUAL	(40,853)	(17,587)	(18,697)	(25,764)	(23,766)	(17,507)	(18,737)
UFE/LOSSES	95,748	84,703	71,732	86,493	84,084	65,800	60,039



SETTLEMENTS REPORT
July 2022 Settlement Adjustment
December 7, 2022

4-Month Settlement Adjustment – Market Withdrawals Analysis

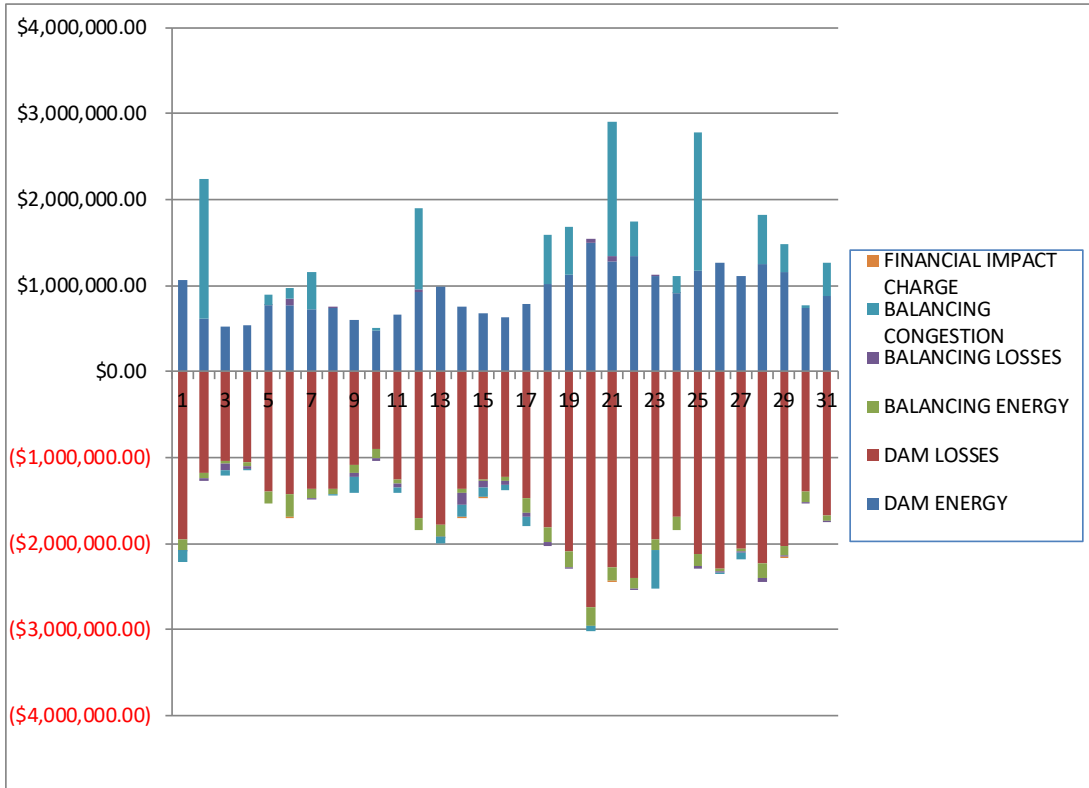
	MONDAY	TUESDAY	WEDNESDAY	THURSDAY	FRIDAY	SATURDAY	SUNDAY
					1	2	3
DAM NYCA					544,107	487,825	459,459
DAM NON-NYCA					28,268	23,864	23,378
DAM WHEELS					9,625	9,525	9,321
DAM VIRTUAL					34,582	29,239	19,348
BALANCING NYCA					(63,130)	(31,304)	(53,191)
BALANCING NON-NYCA					9,588	3,943	5,740
BALANCING WHEELS					(100)	(275)	(496)
BALANCING VIRTUAL					(34,582)	(29,239)	(19,348)
UFELOSSES					91,038	76,104	73,370
	4	5	6	7	8	9	10
DAM NYCA	456,060	506,893	520,349	502,643	506,664	455,367	425,270
DAM NON-NYCA	23,229	19,551	19,628	17,952	21,519	21,057	11,019
DAM WHEELS	8,588	9,209	9,403	9,575	10,297	8,400	10,379
DAM VIRTUAL	23,045	27,298	24,174	14,612	23,274	16,780	16,610
BALANCING NYCA	(64,487)	(62,547)	(48,452)	(44,122)	(56,010)	(47,015)	(32,552)
BALANCING NON-NYCA	3,415	7,128	3,273	(699)	2,888	4,213	2,546
BALANCING WHEELS	(150)	26	(3,159)	(950)	(1,647)	(1,025)	(3,179)
BALANCING VIRTUAL	(23,045)	(27,298)	(24,174)	(14,612)	(23,274)	(16,780)	(16,610)
UFELOSSES	70,747	75,880	71,438	68,326	77,349	70,761	55,676
	11	12	13	14	15	16	17
DAM NYCA	499,090	540,477	540,294	532,398	520,021	487,726	496,667
DAM NON-NYCA	20,276	25,699	22,064	19,294	12,150	11,198	19,836
DAM WHEELS	10,248	10,000	9,000	7,575	7,253	7,740	7,200
DAM VIRTUAL	19,459	38,012	25,219	27,210	21,903	24,380	20,088
BALANCING NYCA	(60,064)	(57,978)	(47,777)	(48,488)	(57,798)	(47,419)	(46,103)
BALANCING NON-NYCA	7,013	6,815	3,425	4,049	3,350	2,523	2,144
BALANCING WHEELS	(1,123)	(875)	(1,025)	(9)	(53)	(540)	100
BALANCING VIRTUAL	(19,459)	(38,012)	(25,219)	(27,210)	(21,903)	(24,380)	(20,088)
UFELOSSES	78,684	86,233	80,180	77,885	68,814	61,278	68,336
	18	19	20	21	22	23	24
DAM NYCA	553,795	583,984	604,365	615,210	597,421	565,368	575,302
DAM NON-NYCA	20,354	33,305	28,503	29,514	33,000	34,465	34,261
DAM WHEELS	7,275	8,055	10,101	8,532	7,724	7,430	7,964
DAM VIRTUAL	34,431	32,115	43,058	49,552	34,050	32,363	32,366
BALANCING NYCA	(61,345)	(69,865)	(38,155)	(49,067)	(52,045)	(47,250)	(54,776)
BALANCING NON-NYCA	6,994	9,583	5,094	11,276	5,642	6,398	8,238
BALANCING WHEELS	(75)	(670)	(2,130)	(1,332)	(504)	(230)	(664)
BALANCING VIRTUAL	(34,431)	(32,115)	(43,058)	(49,552)	(34,050)	(32,363)	(32,366)
UFELOSSES	80,069	92,290	86,540	89,715	86,480	83,731	83,956
	25	26	27	28	29	30	31
DAM NYCA	599,218	557,913	536,245	564,576	542,359	493,593	486,026
DAM NON-NYCA	35,488	24,650	19,697	27,435	21,383	17,159	12,264
DAM WHEELS	7,600	7,200	8,816	7,847	7,234	7,788	7,200
DAM VIRTUAL	40,853	17,587	18,697	25,764	23,766	17,507	18,737
BALANCING NYCA	(74,405)	(100,266)	(64,318)	(49,452)	(49,125)	(44,014)	(38,830)
BALANCING NON-NYCA	9,041	5,507	(473)	6,467	9,070	9,337	6,713
BALANCING WHEELS	(398)	425	(1,566)	(642)	(33)	140	100
BALANCING VIRTUAL	(40,853)	(17,587)	(18,697)	(25,764)	(23,766)	(17,507)	(18,737)
UFELOSSES	95,714	84,651	71,675	86,443	84,037	70,970	59,985



SETTLEMENTS REPORT
 July 2022 Settlement Adjustment
 December 7, 2022

Initial Settlement – Market Residuals Analysis

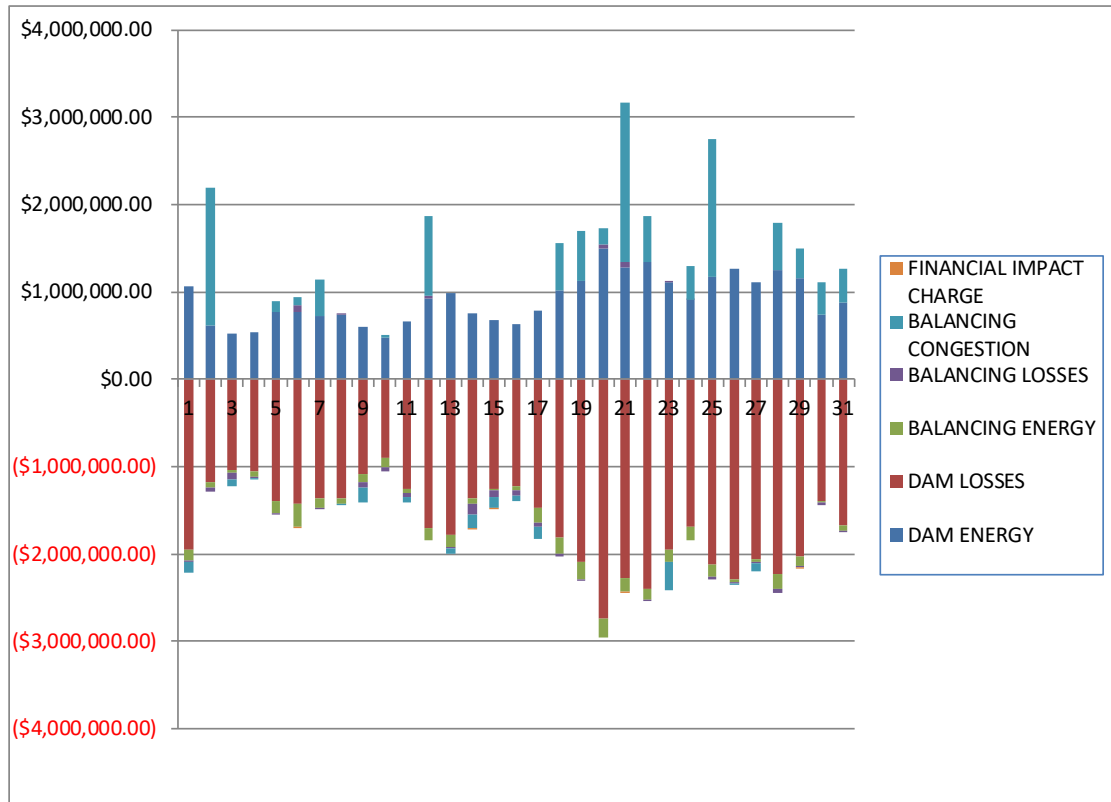
	MONDAY	TUESDAY	WEDNESDAY	THURSDAY	FRIDAY	SATURDAY	SUNDAY
					1	2	3
DAM ENERGY					\$1,060,451.77	\$618,511.37	\$529,859.50
DAM LOSSES					(\$1,946,683.76)	(\$1,171,466.04)	(\$1,035,222.58)
BALANCING ENERGY					(\$121,166.14)	(\$68,869.70)	(\$32,238.70)
BALANCING LOSSES					(\$11,596.65)	(\$35,575.12)	(\$83,012.81)
BALANCING CONGESTION					(\$129,597.44)	\$1,621,209.43	(\$63,290.09)
FINANCIAL IMPACT CHARGE					\$0.00	\$0.00	\$0.00
	4	5	6	7	8	9	10
DAM ENERGY	\$539,345.08	\$765,175.78	\$774,766.57	\$730,920.09	\$745,415.16	\$597,379.09	\$481,286.80
DAM LOSSES	(\$1,048,889.87)	(\$1,399,514.88)	(\$1,419,214.49)	(\$1,359,486.35)	(\$1,361,842.80)	(\$1,079,267.02)	(\$895,037.09)
BALANCING ENERGY	(\$59,720.95)	(\$126,716.56)	(\$274,933.04)	(\$113,925.13)	(\$62,608.77)	(\$99,939.09)	(\$118,518.56)
BALANCING LOSSES	(\$20,865.02)	\$1,391.52	\$78,964.22	(\$5,415.08)	\$1,784.70	(\$52,407.64)	(\$32,589.73)
BALANCING CONGESTION	(\$18,541.85)	\$133,716.75	\$114,814.97	\$418,160.67	(\$19,119.65)	(\$171,937.98)	\$26,088.75
FINANCIAL IMPACT CHARGE	\$0.00	\$0.00	(\$130.96)	\$0.00	\$0.00	\$0.00	\$0.00
	11	12	13	14	15	16	17
DAM ENERGY	\$661,607.27	\$920,203.35	\$983,835.64	\$753,785.85	\$681,942.04	\$627,367.85	\$781,156.37
DAM LOSSES	(\$1,258,170.60)	(\$1,699,641.66)	(\$1,782,805.85)	(\$1,360,635.56)	(\$1,253,819.42)	(\$1,226,141.83)	(\$1,473,194.94)
BALANCING ENERGY	(\$37,349.85)	(\$147,709.59)	(\$136,575.77)	(\$56,001.51)	(\$20,102.89)	(\$47,504.45)	(\$170,039.05)
BALANCING LOSSES	(\$47,207.12)	\$31,476.40	(\$7,312.84)	(\$130,938.17)	(\$71,943.35)	(\$48,269.50)	(\$46,816.94)
BALANCING CONGESTION	(\$64,797.77)	\$953,870.76	(\$63,562.60)	(\$144,750.77)	(\$111,162.18)	(\$63,600.78)	(\$105,791.72)
FINANCIAL IMPACT CHARGE	\$0.00	\$0.00	\$0.00	(\$12.55)	(\$102.74)	\$0.00	\$0.00
	18	19	20	21	22	23	24
DAM ENERGY	\$1,020,698.91	\$1,123,765.63	\$1,500,492.68	\$1,282,901.49	\$1,338,487.24	\$1,111,555.26	\$902,975.25
DAM LOSSES	(\$1,819,590.05)	(\$2,087,681.83)	(\$2,733,548.82)	(\$2,277,373.13)	(\$2,393,852.33)	(\$1,943,642.04)	(\$1,687,661.00)
BALANCING ENERGY	(\$169,540.66)	(\$195,782.49)	(\$221,639.38)	(\$152,205.92)	(\$131,897.23)	(\$136,408.61)	(\$154,821.52)
BALANCING LOSSES	(\$40,703.62)	(\$3,270.11)	\$46,763.84	\$52,404.95	(\$15,428.95)	\$7,145.80	\$5,250.20
BALANCING CONGESTION	\$570,598.19	\$551,409.04	(\$69,245.86)	\$1,569,131.15	\$404,347.15	(\$436,023.21)	\$207,428.85
FINANCIAL IMPACT CHARGE	\$0.00	\$0.00	\$0.00	(\$4,976.48)	\$0.00	\$0.00	\$0.00
	25	26	27	28	29	30	31
DAM ENERGY	\$1,164,807.49	\$1,268,627.80	\$1,113,059.22	\$1,252,480.64	\$1,156,993.50	\$732,495.03	\$879,980.65
DAM LOSSES	(\$2,124,706.70)	(\$2,287,259.79)	(\$2,053,049.55)	(\$2,234,595.42)	(\$2,033,900.90)	(\$1,396,097.82)	(\$1,668,005.46)
BALANCING ENERGY	(\$136,352.44)	(\$36,484.20)	(\$35,555.97)	(\$166,444.90)	(\$98,219.92)	(\$115,894.44)	(\$63,659.52)
BALANCING LOSSES	(\$24,585.64)	(\$11,814.02)	(\$17,948.45)	(\$43,598.98)	(\$24,324.01)	(\$28,784.60)	(\$2,678.45)
BALANCING CONGESTION	\$1,614,318.74	(\$10,164.46)	(\$83,169.92)	\$569,746.25	\$323,498.97	\$30,502.95	\$386,696.48
FINANCIAL IMPACT CHARGE	\$0.00	\$0.00	\$0.00	\$0.00	(\$2,579.41)	\$0.00	\$0.00



SETTLEMENTS REPORT
July 2022 Settlement Adjustment
December 7, 2022

4-Month Settlement Adjustment – Market Residuals Analysis

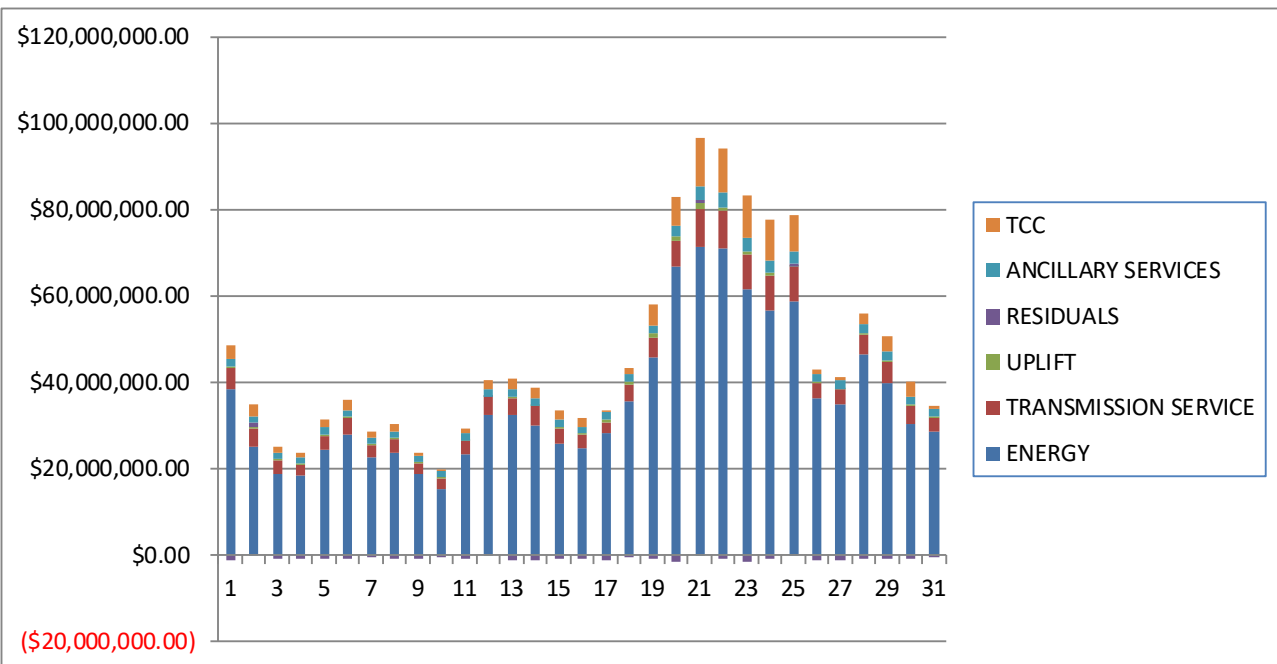
	MONDAY	TUESDAY	WEDNESDAY	THURSDAY	FRIDAY	SATURDAY	SUNDAY
					1	2	3
DAM ENERGY					\$1,060,451.77	\$618,511.37	\$529,859.49
DAM LOSSES					(\$1,946,683.77)	(\$1,171,466.04)	(\$1,035,222.58)
BALANCING ENERGY					(\$124,211.73)	(\$71,447.79)	(\$33,906.96)
BALANCING LOSSES					(\$12,937.69)	(\$36,702.77)	(\$83,885.60)
BALANCING CONGESTION					(\$130,738.92)	\$1,578,100.08	(\$67,684.31)
FINACIAL IMPACT CHARGE					\$0.00	\$0.00	\$0.00
	4	5	6	7	8	9	10
DAM ENERGY	\$539,345.09	\$765,175.78	\$774,766.57	\$730,920.09	\$745,415.16	\$597,379.09	\$481,286.80
DAM LOSSES	(\$1,048,889.87)	(\$1,399,514.89)	(\$1,419,214.48)	(\$1,359,486.35)	(\$1,361,842.79)	(\$1,079,267.01)	(\$895,037.09)
BALANCING ENERGY	(\$62,424.64)	(\$129,818.20)	(\$274,637.98)	(\$108,782.75)	(\$65,029.69)	(\$100,989.23)	(\$119,993.71)
BALANCING LOSSES	(\$21,716.25)	(\$426.11)	\$76,849.22	(\$5,597.02)	\$1,925.67	(\$53,921.34)	(\$33,226.10)
BALANCING CONGESTION	(\$19,891.55)	\$124,677.94	\$80,418.44	\$415,796.76	(\$20,256.78)	(\$172,366.45)	\$26,529.13
FINACIAL IMPACT CHARGE	\$0.00	\$0.00	(\$130.95)	\$0.00	\$0.00	\$0.00	\$0.00
	11	12	13	14	15	16	17
DAM ENERGY	\$661,607.27	\$920,203.36	\$983,835.63	\$753,785.85	\$681,942.04	\$627,367.85	\$781,156.37
DAM LOSSES	(\$1,258,170.59)	(\$1,699,641.65)	(\$1,782,805.86)	(\$1,360,635.57)	(\$1,253,819.42)	(\$1,226,141.83)	(\$1,473,194.94)
BALANCING ENERGY	(\$39,721.80)	(\$149,737.39)	(\$139,685.69)	(\$59,260.25)	(\$23,276.33)	(\$50,441.97)	(\$174,738.82)
BALANCING LOSSES	(\$47,971.71)	\$30,608.10	(\$8,303.34)	(\$132,062.83)	(\$73,354.28)	(\$49,124.58)	(\$48,018.81)
BALANCING CONGESTION	(\$67,035.04)	\$921,345.58	(\$64,051.29)	(\$159,356.44)	(\$118,564.04)	(\$75,252.21)	(\$126,305.70)
FINACIAL IMPACT CHARGE	\$0.00	\$0.00	\$0.00	(\$12.55)	(\$102.73)	\$0.00	\$0.00
	18	19	20	21	22	23	24
DAM ENERGY	\$1,020,698.91	\$1,123,765.63	\$1,500,492.68	\$1,282,901.49	\$1,338,487.23	\$1,111,555.26	\$902,975.25
DAM LOSSES	(\$1,819,590.05)	(\$2,087,681.83)	(\$2,733,548.82)	(\$2,277,373.13)	(\$2,393,852.33)	(\$1,943,642.03)	(\$1,687,661.00)
BALANCING ENERGY	(\$171,615.46)	(\$197,815.58)	(\$226,502.68)	(\$151,150.36)	(\$134,753.46)	(\$139,814.51)	(\$158,198.06)
BALANCING LOSSES	(\$40,480.74)	(\$2,751.90)	\$46,984.05	\$52,771.25	(\$15,680.33)	\$6,578.77	\$4,614.06
BALANCING CONGESTION	\$535,867.49	\$566,410.41	\$175,566.78	\$1,827,083.31	\$530,557.55	(\$323,961.53)	\$388,287.45
FINACIAL IMPACT CHARGE	\$0.00	\$0.00	\$0.00	(\$4,976.59)	\$0.00	\$0.00	\$0.00
	25	26	27	28	29	30	31
DAM ENERGY	\$1,164,807.50	\$1,268,627.79	\$1,113,059.22	\$1,252,480.64	\$1,156,993.50	\$732,495.03	\$879,980.66
DAM LOSSES	(\$2,124,706.70)	(\$2,287,259.79)	(\$2,053,049.54)	(\$2,234,595.42)	(\$2,033,900.90)	(\$1,396,097.82)	(\$1,668,005.46)
BALANCING ENERGY	(\$138,569.29)	(\$39,625.97)	(\$40,107.86)	(\$171,255.33)	(\$100,801.66)	(\$17,861.39)	(\$65,564.44)
BALANCING LOSSES	(\$26,806.54)	(\$14,081.02)	(\$19,683.11)	(\$42,157.07)	(\$24,750.24)	(\$29,495.33)	(\$3,158.86)
BALANCING CONGESTION	\$1,586,362.15	(\$9,274.94)	(\$88,831.32)	\$538,572.97	\$332,521.26	\$373,648.28	\$387,195.84
FINACIAL IMPACT CHARGE	\$0.00	\$0.00	\$0.00	\$0.00	(\$2,579.40)	\$0.00	\$0.00



SETTLEMENTS REPORT
 July 2022 Settlement Adjustment
 December 7, 2022

Initial Settlement – Market Costs Analysis

	MONDAY	TUESDAY	WEDNESDAY	THURSDAY	FRIDAY	SATURDAY	SUNDAY
ENERGY					1	2	3
TRANSMISSION SERVICE					\$38,616,366.61	\$25,029,854.38	\$18,786,070.00
UPLIFT					\$4,627,983.49	\$4,205,162.03	\$3,053,405.25
RESIDUALS					\$463,335.09	\$381,151.38	\$374,893.27
ANCILLARY SERVICES					(\$1,148,592.22)	\$963,809.94	(\$683,904.68)
TCC					\$1,684,233.24	\$1,494,567.14	\$1,409,493.39
					\$3,140,606.50	\$2,755,962.76	\$1,356,270.09
	4	5	6	7	8	9	10
ENERGY	\$18,335,417.39	\$24,375,199.79	\$27,935,193.68	\$22,738,101.82	\$23,886,173.05	\$18,718,538.02	\$15,442,868.92
TRANSMISSION SERVICE	\$2,743,572.71	\$3,363,300.11	\$3,809,075.24	\$2,893,805.04	\$3,014,846.46	\$2,512,066.75	\$2,224,976.76
UPLIFT	\$273,917.84	\$330,434.33	\$411,071.02	\$260,891.64	\$362,216.63	\$456,106.34	\$365,698.87
RESIDUALS	(\$608,672.61)	(\$625,947.39)	(\$725,732.73)	(\$329,745.80)	(\$696,371.36)	(\$806,172.64)	(\$538,769.83)
ANCILLARY SERVICES	\$1,420,664.77	\$1,486,498.18	\$1,441,648.97	\$1,521,863.90	\$1,515,759.76	\$1,359,945.70	\$1,345,322.10
TCC	\$1,108,668.46	\$1,968,164.88	\$2,413,094.42	\$1,175,344.90	\$1,477,341.16	\$604,610.74	\$365,537.59
	11	12	13	14	15	16	17
ENERGY	\$23,533,649.85	\$32,432,611.11	\$32,619,548.66	\$30,149,576.84	\$25,769,515.54	\$24,715,096.38	\$28,149,852.04
TRANSMISSION SERVICE	\$2,851,953.18	\$4,126,624.23	\$3,667,546.02	\$4,304,702.18	\$3,682,228.70	\$3,233,157.70	\$2,766,086.28
UPLIFT	\$258,180.23	\$236,241.38	\$472,642.56	\$315,656.75	\$351,932.76	\$327,715.14	\$596,394.28
RESIDUALS	(\$745,918.07)	\$58,199.26	(\$1,006,421.42)	(\$938,552.71)	(\$775,188.54)	(\$758,148.71)	(\$1,014,686.28)
ANCILLARY SERVICES	\$1,507,827.71	\$1,615,291.01	\$1,638,596.81	\$1,410,047.54	\$1,504,022.71	\$1,505,750.27	\$1,600,260.32
TCC	\$1,059,732.37	\$2,086,571.10	\$2,334,902.72	\$2,693,573.55	\$2,220,447.13	\$1,893,657.66	\$535,403.37
	18	19	20	21	22	23	24
ENERGY	\$35,574,498.77	\$45,876,867.83	\$66,631,164.54	\$71,369,718.14	\$70,871,857.22	\$61,480,469.60	\$56,678,359.96
TRANSMISSION SERVICE	\$3,840,966.42	\$4,508,209.51	\$6,191,395.77	\$8,894,063.93	\$8,707,526.63	\$8,235,220.08	\$7,920,896.98
UPLIFT	\$936,337.91	\$1,130,986.47	\$932,236.17	\$1,382,199.84	\$838,100.87	\$660,972.26	\$969,303.15
RESIDUALS	(\$438,537.23)	(\$611,559.76)	(\$1,477,177.54)	\$469,882.06	(\$798,344.12)	(\$1,397,372.80)	(\$726,828.22)
ANCILLARY SERVICES	\$1,686,163.33	\$1,702,663.56	\$2,592,685.90	\$3,215,179.94	\$3,470,956.29	\$3,176,893.66	\$2,793,526.85
TCC	\$1,438,562.58	\$4,715,800.47	\$6,592,123.07	\$11,221,949.47	\$10,144,951.70	\$9,551,616.91	\$9,131,419.62
	25	26	27	28	29	30	31
ENERGY	\$58,792,918.29	\$36,244,302.00	\$34,863,114.08	\$46,395,297.46	\$39,825,833.11	\$30,498,083.29	\$28,727,752.25
TRANSMISSION SERVICE	\$7,943,579.83	\$3,591,921.41	\$3,416,413.13	\$4,663,398.44	\$4,900,069.49	\$4,210,332.01	\$3,028,585.51
UPLIFT	\$208,006.79	\$307,224.78	\$337,115.96	\$339,940.59	\$274,511.32	\$351,115.58	\$238,356.27
RESIDUALS	\$493,481.45	(\$1,077,094.67)	(\$1,076,664.67)	(\$622,412.41)	(\$678,531.77)	(\$777,778.88)	(\$467,666.30)
ANCILLARY SERVICES	\$2,845,176.63	\$1,741,618.34	\$1,766,942.65	\$1,966,776.78	\$2,057,014.52	\$1,617,797.82	\$1,778,876.51
TCC	\$8,497,707.27	\$1,129,206.33	\$1,026,913.96	\$2,572,749.05	\$3,583,116.86	\$3,397,512.29	\$965,585.78



SETTLEMENTS REPORT
 July 2022 Settlement Adjustment
 December 7, 2022

4-Month Settlement Adjustment – Market Costs Analysis

	MONDAY	TUESDAY	WEDNESDAY	THURSDAY	FRIDAY	SATURDAY	SUNDAY
					1	2	3
ENERGY					\$38,597,038.21	\$25,033,460.12	\$18,775,785.02
TRANSMISSION SERVICE					\$4,624,035.25	\$4,200,153.98	\$3,049,553.60
UPLIFT					\$463,335.07	\$381,134.05	\$374,893.22
RESIDUALS					(\$1,154,120.34)	\$916,994.85	(\$690,839.96)
ANCILLARY SERVICES					\$1,676,069.60	\$1,599,169.83	\$1,489,174.02
TCC					\$3,147,392.59	\$2,649,634.73	\$1,275,355.18
	4	5	6	7	8	9	10
ENERGY	\$18,322,417.50	\$24,378,479.62	\$27,920,652.33	\$22,673,324.47	\$23,862,953.76	\$18,700,449.06	\$15,424,364.61
TRANSMISSION SERVICE	\$2,739,270.27	\$3,360,514.94	\$3,804,537.53	\$2,887,751.61	\$3,011,365.72	\$2,508,384.99	\$2,220,671.26
UPLIFT	\$273,909.86	\$330,432.05	\$410,144.94	\$260,920.83	\$362,163.21	\$456,022.03	\$365,623.71
RESIDUALS	(\$613,577.22)	(\$639,905.48)	(\$761,949.18)	(\$327,149.27)	(\$699,788.43)	(\$809,164.94)	(\$540,440.97)
ANCILLARY SERVICES	\$1,486,949.89	\$1,544,847.82	\$1,528,506.62	\$1,566,708.53	\$1,548,400.74	\$1,379,744.17	\$1,356,584.67
TCC	\$1,040,869.19	\$1,908,886.49	\$2,324,576.60	\$1,128,349.14	\$1,443,517.39	\$583,612.65	\$352,799.07
	11	12	13	14	15	16	17
ENERGY	\$23,516,705.67	\$32,397,474.96	\$32,580,225.91	\$30,124,548.66	\$25,770,553.95	\$24,722,943.00	\$28,169,672.27
TRANSMISSION SERVICE	\$2,848,070.99	\$4,121,199.06	\$3,663,424.89	\$4,299,708.59	\$3,679,013.91	\$3,229,548.98	\$2,761,684.93
UPLIFT	\$258,071.21	\$236,408.82	\$472,450.18	\$315,424.03	\$389,954.92	\$329,168.22	\$596,226.40
RESIDUALS	(\$751,291.87)	\$22,778.00	(\$1,011,010.55)	(\$957,541.79)	(\$787,174.76)	(\$773,592.74)	(\$1,041,101.90)
ANCILLARY SERVICES	\$1,526,719.29	\$1,696,218.32	\$1,659,329.13	\$1,592,731.07	\$1,641,352.96	\$1,616,219.10	\$1,609,109.86
TCC	\$1,039,489.32	\$2,003,720.82	\$2,312,699.44	\$2,509,129.40	\$2,082,043.76	\$1,782,005.84	\$525,123.66
	18	19	20	21	22	23	24
ENERGY	\$35,548,731.42	\$45,803,799.25	\$66,298,109.30	\$70,993,105.45	\$70,726,353.88	\$61,339,536.91	\$56,479,032.28
TRANSMISSION SERVICE	\$3,834,339.40	\$4,502,229.61	\$6,185,631.82	\$8,887,476.90	\$8,702,569.37	\$8,232,458.71	\$7,918,316.24
UPLIFT	\$928,896.92	\$1,366,352.45	\$1,336,695.68	\$1,382,276.85	\$838,097.04	\$658,369.44	\$969,301.87
RESIDUALS	(\$475,119.85)	(\$598,073.27)	(\$1,237,007.99)	\$729,255.97	(\$675,241.34)	(\$1,289,284.04)	(\$549,982.30)
ANCILLARY SERVICES	\$1,745,437.56	\$1,684,957.16	\$2,429,099.69	\$2,623,537.31	\$2,854,609.34	\$2,659,167.63	\$2,200,520.71
TCC	\$1,377,336.04	\$4,731,257.60	\$6,753,541.71	\$11,811,269.03	\$10,759,647.74	\$10,068,387.90	\$9,723,572.11
	25	26	27	28	29	30	31
ENERGY	\$58,788,519.51	\$36,239,690.12	\$34,866,477.36	\$46,388,699.48	\$39,783,681.05	\$30,493,596.87	\$28,711,273.83
TRANSMISSION SERVICE	\$7,938,545.49	\$3,586,938.01	\$3,413,176.87	\$4,658,931.34	\$4,896,156.05	\$4,205,960.67	\$3,024,095.99
UPLIFT	\$208,004.73	\$308,494.14	\$383,627.43	\$339,890.30	\$274,511.31	\$351,030.16	\$238,362.87
RESIDUALS	\$461,087.12	(\$1,081,613.93)	(\$1,088,612.61)	(\$656,954.21)	(\$672,517.44)	(\$337,311.23)	(\$469,552.26)
ANCILLARY SERVICES	\$2,440,623.34	\$1,744,941.65	\$1,766,697.00	\$1,890,950.05	\$1,938,790.34	\$1,729,079.01	\$1,776,646.64
TCC	\$8,900,563.04	\$1,124,230.14	\$1,026,060.68	\$2,647,057.97	\$3,699,943.75	\$3,286,008.36	\$966,276.95

