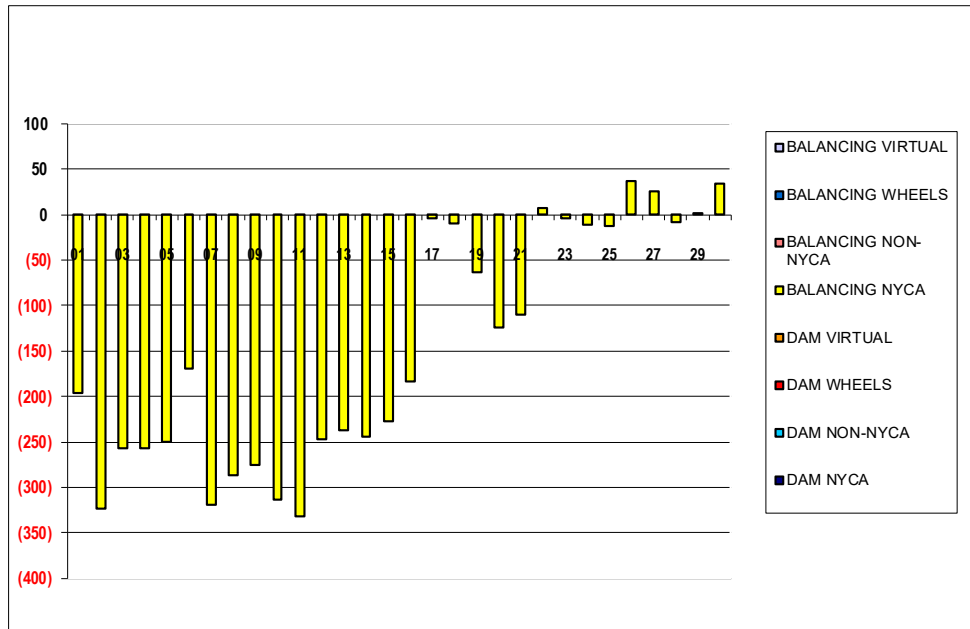


SETTLEMENTS REPORT  
 September 2022 Settlement Adjustment  
 February 7, 2023

**Settlement Adjustment – Market Supply Delta Analysis**

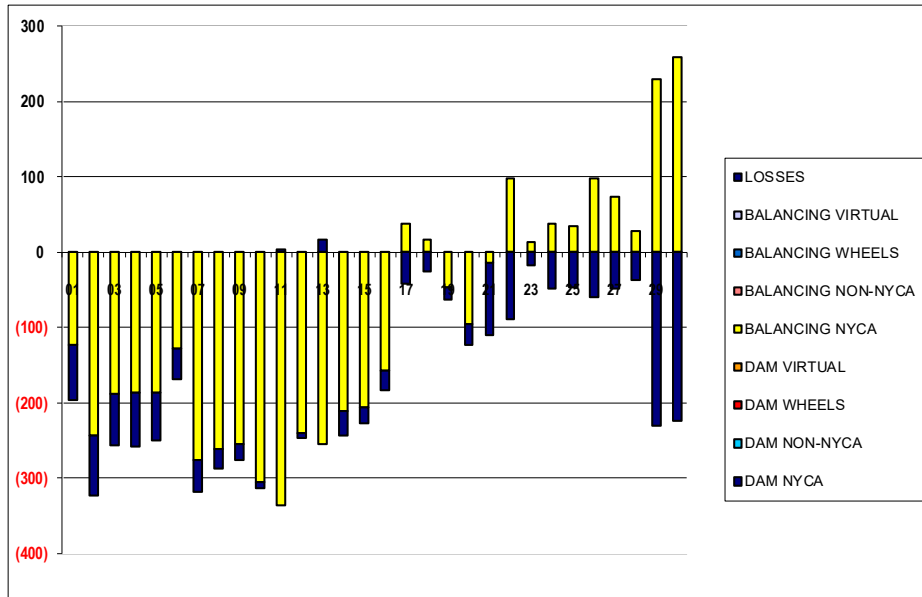
	MONDAY	TUESDAY	WEDNESDAY	THURSDAY	FRIDAY	SATURDAY	SUNDAY
				1	2	3	4
DAM NYCA				0	0	0	0
DAM NON-NYCA				0	0	0	0
DAM WHEELS				0	0	0	0
DAM VIRTUAL				0	0	0	0
BALANCING NYCA				(196)	(324)	(257)	(258)
BALANCING NON-NYCA				0	0	0	0
BALANCING WHEELS				0	0	0	0
BALANCING VIRTUAL				0	0	0	0
	5	6	7	8	9	10	11
DAM NYCA	0	0	0	0	0	0	0
DAM NON-NYCA	0	0	0	0	0	0	0
DAM WHEELS	0	0	0	0	0	0	0
DAM VIRTUAL	0	0	0	0	0	0	0
BALANCING NYCA	(250)	(169)	(319)	(287)	(276)	(314)	(332)
BALANCING NON-NYCA	0	0	0	0	0	0	0
BALANCING WHEELS	0	0	0	0	0	0	0
BALANCING VIRTUAL	0	0	0	0	0	0	0
	12	13	14	15	16	17	18
DAM NYCA	0	0	0	0	0	0	0
DAM NON-NYCA	0	0	0	0	0	0	0
DAM WHEELS	0	0	0	0	0	0	0
DAM VIRTUAL	0	0	0	0	0	0	0
BALANCING NYCA	(247)	(238)	(244)	(228)	(184)	(4)	(10)
BALANCING NON-NYCA	0	0	0	0	0	0	0
BALANCING WHEELS	0	0	0	0	0	0	0
BALANCING VIRTUAL	0	0	0	0	0	0	0
	19	20	21	22	23	24	25
DAM NYCA	0	0	0	0	0	0	0
DAM NON-NYCA	0	0	0	0	0	0	0
DAM WHEELS	0	0	0	0	0	0	0
DAM VIRTUAL	0	0	0	0	0	0	0
BALANCING NYCA	(63)	(123)	(110)	8	(4)	(11)	(12)
BALANCING NON-NYCA	0	0	0	0	0	0	0
BALANCING WHEELS	0	0	0	0	0	0	0
BALANCING VIRTUAL	0	0	0	0	0	0	0
	26	27	28	29	30		
DAM NYCA	0	0	0	0	0		
DAM NON-NYCA	0	0	0	0	0		
DAM WHEELS	0	0	0	0	0		
DAM VIRTUAL	0	0	0	0	0		
BALANCING NYCA	37	25	(9)	0	35		
BALANCING NON-NYCA	0	0	0	0	0		
BALANCING WHEELS	0	0	0	0	0		
BALANCING VIRTUAL	0	0	0	0	0		



SETTLEMENTS REPORT  
 September 2022 Settlement Adjustment  
 February 7, 2023

**Settlement Adjustment – Market Withdrawals Delta Analysis**

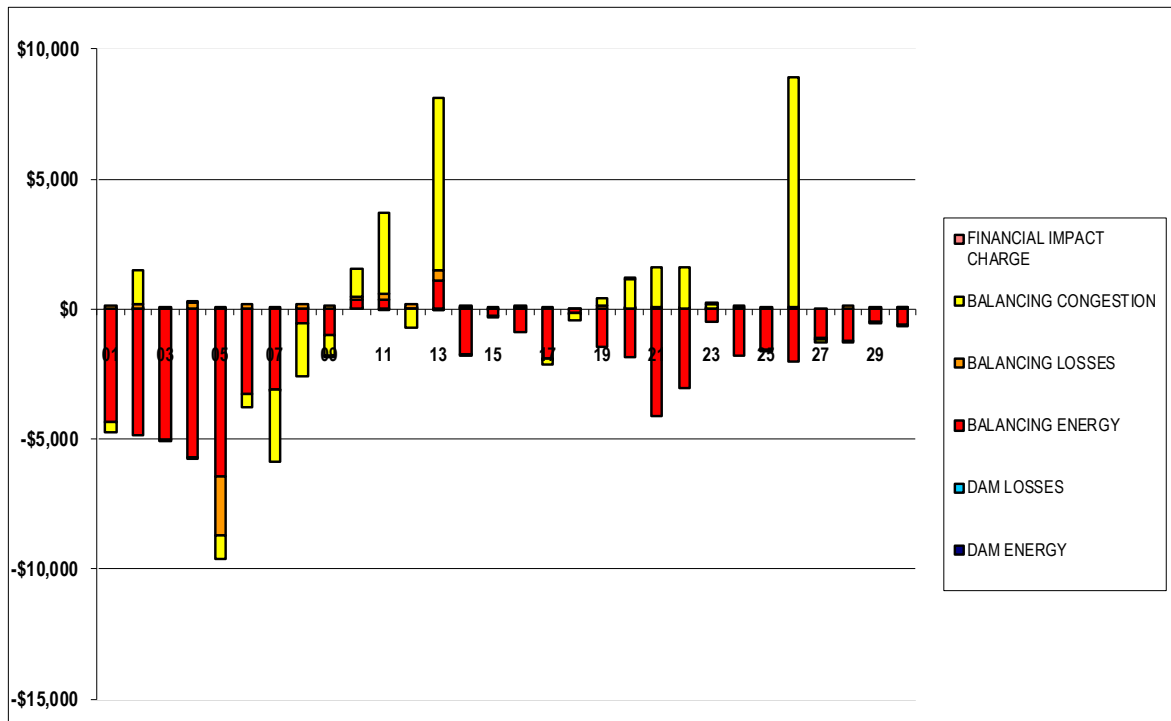
	MONDAY	TUESDAY	WEDNESDAY	THURSDAY	FRIDAY	SATURDAY	SUNDAY
				1	2	3	4
DAM NYCA				0	0	0	0
DAM NON-NYCA				0	0	0	0
DAM WHEELS				0	0	0	0
DAM VIRTUAL				0	0	0	0
BALANCING NYCA				(123)	(243)	(189)	(187)
BALANCING NON-NYCA				0	0	0	0
BALANCING WHEELS				0	0	0	0
BALANCING VIRTUAL				0	0	0	0
UFE/LOSSES				(73)	(81)	(68)	(70)
	5	6	7	8	9	10	11
DAM NYCA	0	0	0	0	0	0	0
DAM NON-NYCA	0	0	0	0	0	0	0
DAM WHEELS	0	0	0	0	0	0	0
DAM VIRTUAL	0	0	0	0	0	0	0
BALANCING NYCA	(186)	(128)	(276)	(262)	(256)	(305)	(336)
BALANCING NON-NYCA	0	0	0	0	0	0	0
BALANCING WHEELS	0	0	0	0	0	0	0
BALANCING VIRTUAL	0	0	0	0	0	0	0
UFE/LOSSES	(64)	(41)	(43)	(26)	(20)	(8)	4
	12	13	14	15	16	17	18
DAM NYCA	0	0	0	0	0	0	0
DAM NON-NYCA	0	0	0	0	0	0	0
DAM WHEELS	0	0	0	0	0	0	0
DAM VIRTUAL	0	0	0	0	0	0	0
BALANCING NYCA	(241)	(254)	(212)	(206)	(157)	38	16
BALANCING NON-NYCA	0	0	0	0	0	0	0
BALANCING WHEELS	0	0	0	0	0	0	0
BALANCING VIRTUAL	0	0	0	0	0	0	0
UFE/LOSSES	(6)	17	(32)	(22)	(27)	(42)	(26)
	19	20	21	22	23	24	25
DAM NYCA	0	0	0	0	0	0	0
DAM NON-NYCA	0	0	0	0	0	0	0
DAM WHEELS	0	0	0	0	0	0	0
DAM VIRTUAL	0	0	0	0	0	0	0
BALANCING NYCA	(47)	(95)	(14)	97	13	38	35
BALANCING NON-NYCA	0	0	0	0	0	0	0
BALANCING WHEELS	0	0	0	0	0	0	0
BALANCING VIRTUAL	0	0	0	0	0	0	0
UFE/LOSSES	(17)	(28)	(97)	(90)	(18)	(49)	(47)
	26	27	28	29	30		
DAM NYCA	0	0	0	0	0		
DAM NON-NYCA	0	0	0	0	0		
DAM WHEELS	0	0	0	0	0		
DAM VIRTUAL	0	0	0	0	0		
BALANCING NYCA	98	74	28	230	259		
BALANCING NON-NYCA	0	0	0	0	0		
BALANCING WHEELS	0	0	0	0	0		
BALANCING VIRTUAL	0	0	0	0	0		
UFE/LOSSES	(60)	(48)	(37)	(230)	(224)		



SETTLEMENTS REPORT  
September 2022 Settlement Adjustment  
February 7, 2023

**Settlement Adjustment – Market Residuals Delta Analysis**

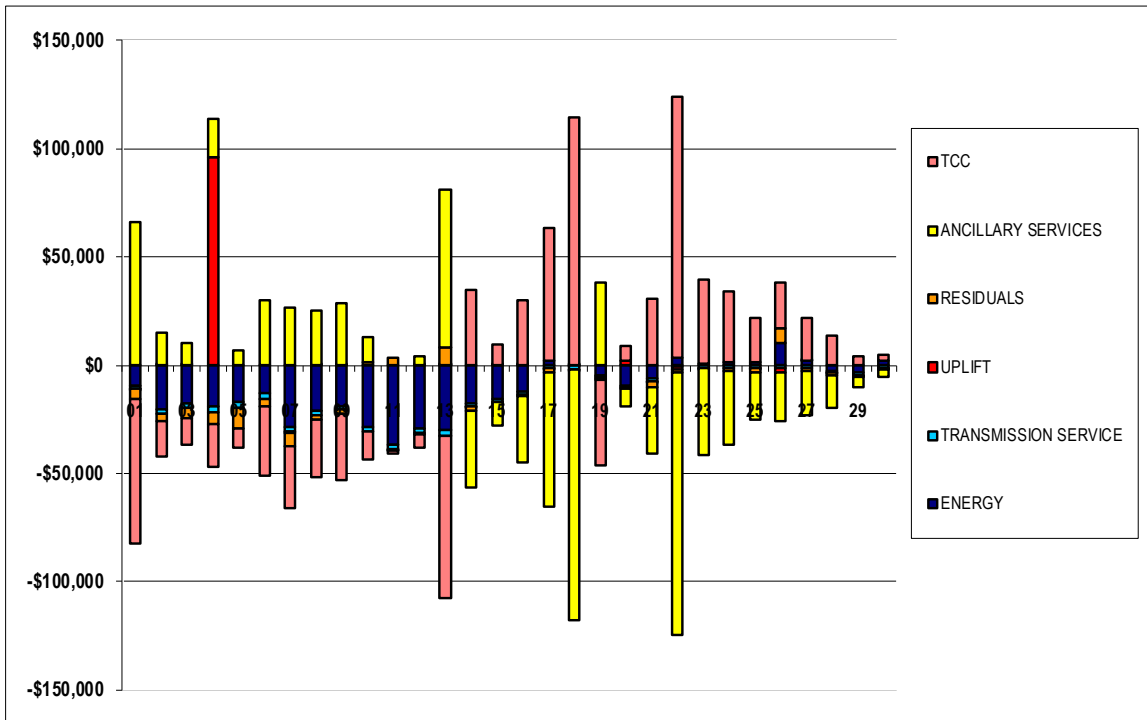
	MONDAY	TUESDAY	WEDNESDAY	THURSDAY	FRIDAY	SATURDAY	SUNDAY
				1	2	3	4
DAM ENERGY				\$0.00	(\$0.01)	\$0.00	\$0.00
DAM LOSSES				\$0.00	\$0.01	\$0.00	\$0.00
BALANCING ENERGY				(\$4,362.04)	(\$4,856.76)	(\$5,001.99)	(\$5,694.18)
BALANCING LOSSES				\$144.69	\$181.01	\$13.10	\$241.24
BALANCING CONGESTION				(\$366.52)	\$1,312.62	(\$4.26)	\$82.57
FINANCIAL IMPACT CHARGE				\$0.00	\$0.00	\$0.00	(\$0.03)
	5	6	7	8	9	10	11
DAM ENERGY	\$0.01	\$0.00	\$0.00	\$0.01	(\$0.01)	\$0.01	(\$0.01)
DAM LOSSES	(\$0.01)	\$0.00	\$0.01	\$0.00	(\$0.01)	\$0.00	\$0.00
BALANCING ENERGY	(\$6,416.16)	(\$3,259.96)	(\$3,084.51)	(\$568.90)	(\$997.58)	\$372.28	\$376.25
BALANCING LOSSES	(\$2,265.09)	\$165.18	(\$8.88)	\$171.03	\$155.98	\$121.62	\$202.27
BALANCING CONGESTION	(\$910.68)	(\$516.51)	(\$2,758.67)	(\$1,990.45)	(\$804.54)	\$1,052.07	\$3,136.88
FINANCIAL IMPACT CHARGE	\$0.00	\$0.00	\$0.00	\$0.00	(\$0.02)	\$0.00	\$0.00
	12	13	14	15	16	17	18
DAM ENERGY	\$0.00	(\$0.01)	\$0.00	(\$0.01)	\$0.00	\$0.00	\$0.00
DAM LOSSES	\$0.00	(\$0.01)	\$0.01	\$0.00	\$0.00	\$0.01	(\$0.01)
BALANCING ENERGY	\$6.93	\$1,120.55	(\$1,757.28)	(\$291.89)	(\$861.47)	(\$1,879.30)	(\$164.70)
BALANCING LOSSES	\$181.76	\$353.57	\$71.98	\$92.28	\$101.06	(\$9.35)	(\$3.20)
BALANCING CONGESTION	(\$696.03)	\$6,650.50	(\$24.68)	(\$56.33)	\$17.39	(\$220.91)	(\$265.48)
FINANCIAL IMPACT CHARGE	\$0.00	\$0.00	\$0.01	\$0.00	\$0.00	\$0.00	\$0.00
	19	20	21	22	23	24	25
DAM ENERGY	\$0.00	\$0.00	\$0.00	\$0.00	(\$0.01)	\$0.00	\$0.00
DAM LOSSES	\$0.00	\$0.01	\$0.00	\$0.00	\$0.00	\$0.00	\$0.00
BALANCING ENERGY	(\$1,452.64)	(\$1,837.93)	(\$4,130.04)	(\$3,033.82)	(\$511.36)	(\$1,775.40)	(\$1,564.96)
BALANCING LOSSES	\$119.75	\$46.99	\$64.30	\$34.22	\$39.85	\$71.11	\$44.33
BALANCING CONGESTION	\$303.04	\$1,091.37	\$1,541.39	\$1,590.42	\$143.84	\$55.55	(\$22.67)
FINANCIAL IMPACT CHARGE	\$0.00	\$0.02	\$0.00	\$0.00	\$0.06	\$0.00	\$0.00
	26	27	28	29	30		
DAM ENERGY	\$0.00	\$0.00	\$0.00	\$0.00	\$0.01		
DAM LOSSES	\$0.00	\$0.00	\$0.00	\$0.00	\$0.00		
BALANCING ENERGY	(\$2,009.44)	(\$1,108.63)	(\$1,250.95)	(\$509.92)	(\$598.43)		
BALANCING LOSSES	\$88.19	(\$85.55)	\$128.73	\$97.83	\$71.13		
BALANCING CONGESTION	\$8,800.12	(\$107.24)	(\$30.17)	(\$28.98)	(\$57.16)		
FINANCIAL IMPACT CHARGE	\$0.00	\$0.00	\$0.00	\$0.00	\$0.00		



SETTLEMENTS REPORT  
September 2022 Settlement Adjustment  
February 7, 2023

**Settlement Adjustment – Market Costs Delta Analysis**

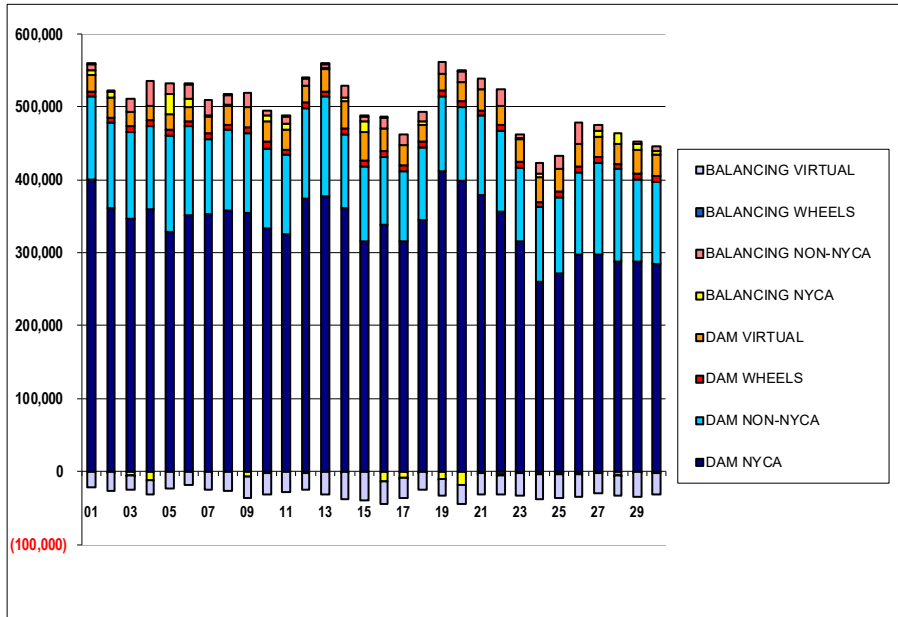
	MONDAY	TUESDAY	WEDNESDAY	THURSDAY	FRIDAY	SATURDAY	SUNDAY
ENERGY				1	2	3	4
TRANSMISSION SERVICE				(\$9,734.48)	(\$20,488.38)	(\$17,610.40)	(\$18,948.77)
UPLIFT				(\$1,138.03)	(\$1,841.63)	(\$2,114.37)	(\$2,829.38)
RESIDUALS				(\$63.10)	\$240.11	\$1.19	\$95,868.38
ANCILLARY SERVICES				(\$4,583.87)	(\$3,363.13)	(\$4,993.15)	(\$5,370.40)
TCC				\$65,833.70	\$14,832.21	\$10,124.27	\$17,631.19
				(\$66,837.34)	(\$16,441.08)	(\$11,960.63)	(\$20,075.53)
	5	6	7	8	9	10	11
ENERGY	(\$17,327.39)	(\$13,142.16)	(\$28,519.21)	(\$21,161.35)	(\$18,790.97)	(\$28,645.70)	(\$36,793.87)
TRANSMISSION SERVICE	(\$2,369.28)	(\$2,285.12)	(\$2,031.56)	(\$1,847.87)	(\$1,954.82)	(\$1,941.26)	(\$2,115.24)
UPLIFT	(\$0.01)	(\$0.01)	(\$1,045.05)	\$2.94	\$2.10	\$0.00	(\$29.19)
RESIDUALS	(\$9,591.93)	(\$3,611.29)	(\$5,852.05)	(\$2,388.31)	(\$1,646.18)	\$1,545.98	\$3,715.39
ANCILLARY SERVICES	\$7,010.52	\$30,085.62	\$26,563.85	\$24,925.56	\$28,722.87	\$11,355.52	(\$650.52)
TCC	(\$9,188.92)	(\$32,053.45)	(\$28,426.04)	(\$26,559.24)	(\$30,440.82)	(\$13,075.09)	(\$1,227.91)
	12	13	14	15	16	17	18
ENERGY	(\$29,433.85)	(\$29,893.21)	(\$17,832.01)	(\$15,433.31)	(\$12,134.12)	\$1,739.28	(\$243.44)
TRANSMISSION SERVICE	(\$1,900.96)	(\$2,607.91)	(\$1,387.96)	(\$1,288.74)	(\$1,440.30)	(\$1,156.77)	(\$1,521.18)
UPLIFT	\$1.67	\$56.31	(\$19.41)	\$0.26	\$0.13	(\$2.03)	\$1.91
RESIDUALS	(\$507.34)	\$8,124.60	(\$1,709.96)	(\$255.95)	(\$743.02)	(\$2,109.55)	(\$433.39)
ANCILLARY SERVICES	\$4,352.83	\$73,166.14	(\$35,817.13)	(\$10,729.71)	(\$30,973.91)	(\$62,366.84)	(\$115,491.71)
TCC	(\$6,028.32)	(\$75,423.89)	\$34,583.22	\$9,589.38	\$29,718.80	\$61,390.82	\$114,189.75
	19	20	21	22	23	24	25
ENERGY	(\$4,432.20)	(\$9,382.80)	(\$6,287.39)	\$3,104.73	\$663.97	\$1,214.82	\$1,070.80
TRANSMISSION SERVICE	(\$1,129.29)	(\$1,072.20)	(\$1,047.32)	(\$865.08)	(\$1,196.80)	(\$1,382.19)	(\$1,596.70)
UPLIFT	(\$360.58)	\$1,741.11	(\$117.24)	(\$1,162.25)	\$0.01	\$0.01	(\$0.08)
RESIDUALS	(\$1,029.85)	(\$699.54)	(\$2,524.35)	(\$1,409.18)	(\$327.62)	(\$1,648.74)	(\$1,543.30)
ANCILLARY SERVICES	\$38,438.93	(\$8,201.00)	(\$31,239.41)	(\$121,442.45)	(\$40,167.81)	(\$33,830.93)	(\$22,103.79)
TCC	(\$39,416.88)	\$7,242.27	\$30,334.74	\$120,704.97	\$39,172.98	\$32,601.50	\$20,737.24
	26	27	28	29	30		
ENERGY	\$10,441.41	\$2,252.32	(\$2,446.20)	(\$3,589.53)	\$2,251.28		
TRANSMISSION SERVICE	(\$1,463.10)	(\$1,269.20)	(\$1,044.84)	(\$1,052.67)	(\$1,333.06)		
UPLIFT	(\$1,917.18)	\$0.11	(\$15.20)	(\$83.43)	(\$0.38)		
RESIDUALS	\$6,878.87	(\$1,301.42)	(\$1,152.39)	(\$441.07)	(\$584.45)		
ANCILLARY SERVICES	(\$22,719.60)	(\$20,732.94)	(\$14,882.20)	(\$4,958.51)	(\$3,748.77)		
TCC	\$20,942.26	\$19,697.29	\$13,933.03	\$3,943.11	\$2,644.63		



SETTLEMENTS REPORT  
September 2022 Settlement Adjustment  
February 7, 2023

**Initial Settlement – Market Supply Analysis**

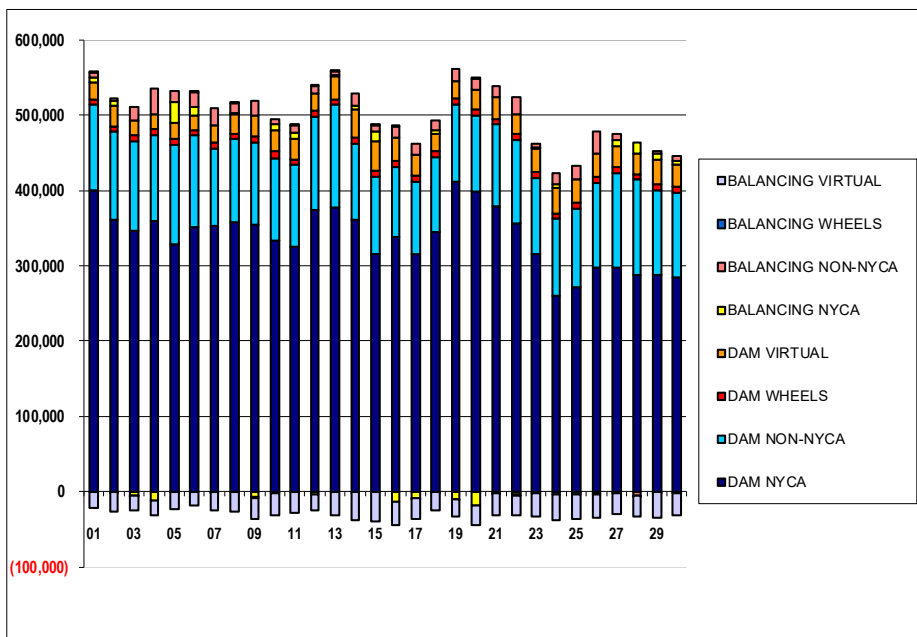
	MONDAY	TUESDAY	WEDNESDAY	THURSDAY	FRIDAY	SATURDAY	SUNDAY
				1	2	3	4
DAM NYCA				400,296	361,959	346,207	359,057
DAM NON-NYCA				113,676	115,873	119,438	115,390
DAM WHEELS				7,200	7,610	7,843	7,200
DAM VIRTUAL				22,178	26,533	19,796	19,378
BALANCING NYCA				6,380	8,330	(4,733)	(12,084)
BALANCING NON-NYCA				8,028	3,037	18,119	34,573
BALANCING WHEELS				150	(410)	(643)	0
BALANCING VIRTUAL				(22,178)	(26,533)	(19,796)	(19,378)
	5	6	7	8	9	10	11
DAM NYCA	329,476	351,269	352,346	358,004	355,137	333,882	325,658
DAM NON-NYCA	131,453	122,095	102,786	110,263	108,880	109,210	108,143
DAM WHEELS	7,200	7,200	8,352	7,200	7,860	8,745	7,200
DAM VIRTUAL	22,583	19,000	23,989	26,085	28,611	29,106	28,277
BALANCING NYCA	27,123	12,239	242	1,529	(7,273)	6,973	7,441
BALANCING NON-NYCA	14,573	19,459	21,969	13,750	18,488	7,543	10,133
BALANCING WHEELS	0	388	(904)	525	(260)	(1,489)	362
BALANCING VIRTUAL	(22,583)	(19,000)	(23,989)	(26,085)	(28,611)	(29,106)	(28,277)
	12	13	14	15	16	17	18
DAM NYCA	373,534	377,499	361,702	314,916	338,197	315,699	344,710
DAM NON-NYCA	125,287	136,241	101,018	103,765	93,666	96,542	100,419
DAM WHEELS	7,200	7,200	7,776	7,260	7,225	7,200	7,200
DAM VIRTUAL	22,729	30,981	37,621	39,458	31,496	27,363	23,577
BALANCING NYCA	(2,644)	1,275	4,311	14,210	(12,720)	(8,702)	4,268
BALANCING NON-NYCA	10,656	4,760	17,443	6,612	14,995	16,007	13,750
BALANCING WHEELS	1,117	400	(516)	340	25	(219)	(773)
BALANCING VIRTUAL	(22,729)	(30,981)	(37,621)	(39,458)	(31,496)	(27,363)	(23,577)
	19	20	21	22	23	24	25
DAM NYCA	412,424	397,978	379,719	356,177	315,884	259,816	270,915
DAM NON-NYCA	101,237	102,555	108,032	110,648	101,073	102,364	104,583
DAM WHEELS	8,171	7,200	7,719	7,732	7,872	7,200	7,830
DAM VIRTUAL	23,205	25,854	28,720	26,089	30,520	34,275	32,147
BALANCING NYCA	(9,659)	(18,021)	(1,891)	(3,940)	2,696	4,942	(430)
BALANCING NON-NYCA	16,532	15,347	15,323	24,135	4,314	13,842	17,555
BALANCING WHEELS	(746)	500	(758)	(1,012)	(2,047)	(3,432)	(3,239)
BALANCING VIRTUAL	(23,205)	(25,854)	(28,720)	(26,089)	(30,520)	(34,275)	(32,147)
	26	27	28	29	30		
DAM NYCA	297,740	298,107	288,338	288,049	284,337		
DAM NON-NYCA	112,834	125,629	125,906	112,577	113,256		
DAM WHEELS	7,200	7,200	7,252	7,200	7,200		
DAM VIRTUAL	30,833	27,438	27,887	33,341	30,494		
BALANCING NYCA	(2,773)	8,534	14,594	7,338	3,762		
BALANCING NON-NYCA	30,488	7,759	(4,520)	4,392	7,648		
BALANCING WHEELS	(1,446)	(1,847)	(1,223)	(1,040)	(1,358)		
BALANCING VIRTUAL	(30,833)	(27,438)	(27,887)	(33,341)	(30,494)		



SETTLEMENTS REPORT  
September 2022 Settlement Adjustment  
February 7, 2023

**4-Month Settlement Adjustment – Market Supply Analysis**

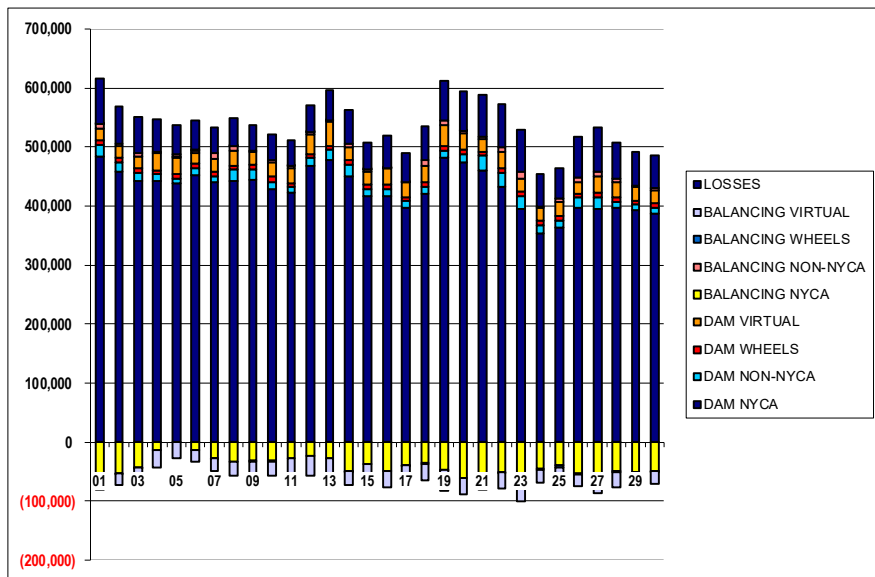
	MONDAY	TUESDAY	WEDNESDAY	THURSDAY	FRIDAY	SATURDAY	SUNDAY
				1	2	3	4
DAM NYCA				400,296	361,959	346,207	359,057
DAM NON-NYCA				113,676	115,873	119,438	115,390
DAM WHEELS				7,200	7,610	7,843	7,200
DAM VIRTUAL				22,178	26,533	19,796	19,378
BALANCING NYCA				6,183	8,006	(4,990)	(12,342)
BALANCING NON-NYCA				8,028	3,037	18,119	34,573
BALANCING WHEELS				150	(410)	(643)	0
BALANCING VIRTUAL				(22,178)	(26,533)	(19,796)	(19,378)
	5	6	7	8	9	10	11
DAM NYCA	329,476	351,269	352,346	358,004	355,137	333,882	325,658
DAM NON-NYCA	131,453	122,095	102,786	110,263	108,880	109,210	108,143
DAM WHEELS	7,200	7,200	8,352	7,200	7,860	8,745	7,200
DAM VIRTUAL	22,583	19,000	23,989	26,085	28,611	29,106	28,277
BALANCING NYCA	26,872	12,069	(77)	1,241	(7,548)	6,659	7,109
BALANCING NON-NYCA	14,573	19,459	21,969	13,750	18,488	7,543	10,133
BALANCING WHEELS	0	388	(904)	525	(260)	(1,489)	362
BALANCING VIRTUAL	(22,583)	(19,000)	(23,989)	(26,085)	(28,611)	(29,106)	(28,277)
	12	13	14	15	16	17	18
DAM NYCA	373,534	377,499	361,702	314,916	338,197	315,699	344,710
DAM NON-NYCA	125,287	136,241	101,018	103,765	93,666	96,542	100,419
DAM WHEELS	7,200	7,200	7,776	7,260	7,225	7,200	7,200
DAM VIRTUAL	22,729	30,981	37,621	39,458	31,496	27,363	23,577
BALANCING NYCA	(2,891)	1,037	4,067	13,982	(12,904)	(8,706)	4,258
BALANCING NON-NYCA	10,656	4,760	17,443	6,612	14,995	16,007	13,750
BALANCING WHEELS	1,117	400	(516)	340	25	(219)	(773)
BALANCING VIRTUAL	(22,729)	(30,981)	(37,621)	(39,458)	(31,496)	(27,363)	(23,577)
	19	20	21	22	23	24	25
DAM NYCA	412,424	397,978	379,719	356,177	315,884	259,816	270,915
DAM NON-NYCA	101,237	102,555	108,032	110,648	101,073	102,364	104,583
DAM WHEELS	8,171	7,200	7,719	7,732	7,872	7,200	7,830
DAM VIRTUAL	23,205	25,854	28,720	26,089	30,520	34,275	32,147
BALANCING NYCA	(9,723)	(18,144)	(2,001)	(3,933)	2,692	4,931	(443)
BALANCING NON-NYCA	16,532	15,347	15,323	24,135	4,314	13,842	17,555
BALANCING WHEELS	(746)	500	(758)	(1,012)	(2,047)	(3,432)	(3,239)
BALANCING VIRTUAL	(23,205)	(25,854)	(28,720)	(26,089)	(30,520)	(34,275)	(32,147)
	26	27	28	29	30		
DAM NYCA	297,740	298,107	288,338	288,049	284,337		
DAM NON-NYCA	112,834	125,629	125,906	112,577	113,256		
DAM WHEELS	7,200	7,200	7,252	7,200	7,200		
DAM VIRTUAL	30,833	27,438	27,887	33,341	30,494		
BALANCING NYCA	(2,736)	8,559	14,586	7,338	3,796		
BALANCING NON-NYCA	30,488	7,759	(4,520)	4,392	7,648		
BALANCING WHEELS	(1,446)	(1,847)	(1,223)	(1,040)	(1,358)		
BALANCING VIRTUAL	(30,833)	(27,438)	(27,887)	(33,341)	(30,494)		



SETTLEMENTS REPORT  
September 2022 Settlement Adjustment  
February 7, 2023

**Initial Settlement – Market Withdrawals Analysis**

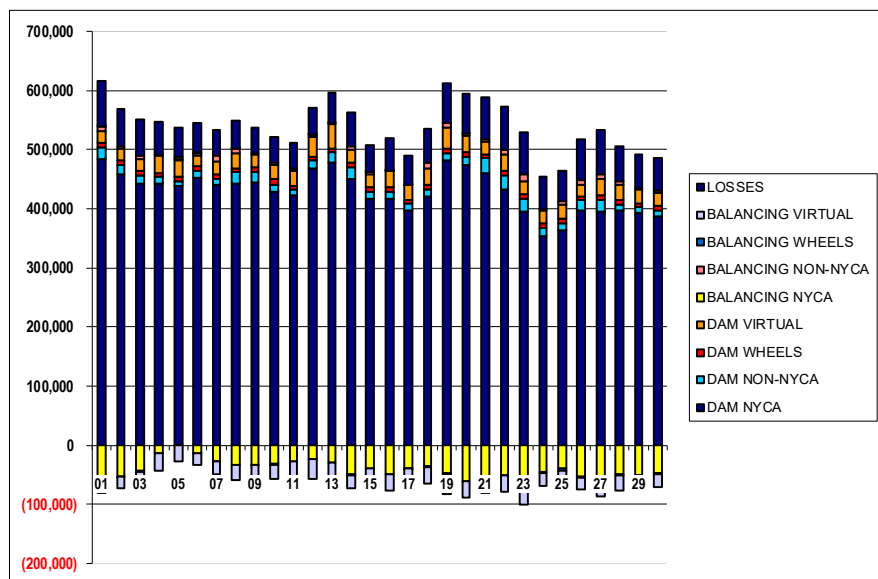
	MONDAY	TUESDAY	WEDNESDAY	THURSDAY	FRIDAY	SATURDAY	SUNDAY
				1	2	3	4
DAM NYCA				483,858	458,830	441,551	442,113
DAM NON-NYCA				19,582	14,834	13,862	11,457
DAM WHEELS				7,200	7,610	7,843	7,200
DAM VIRTUAL				20,660	19,640	20,383	29,401
BALANCING NYCA				(58,743)	(52,878)	(43,067)	(13,406)
BALANCING NON-NYCA				7,453	3,678	6,668	1,960
BALANCING WHEELS				150	(410)	(643)	0
BALANCING VIRTUAL				(20,660)	(19,640)	(20,383)	(29,401)
UFELOSSES				76,231	64,736	60,017	54,812
	5	6	7	8	9	10	11
DAM NYCA	437,523	451,962	441,183	443,228	444,739	428,871	422,243
DAM NON-NYCA	9,363	11,837	8,857	18,364	16,444	11,969	9,267
DAM WHEELS	7,200	7,200	8,352	7,200	7,860	8,745	7,200
DAM VIRTUAL	26,912	19,414	20,881	24,656	22,601	24,604	24,400
BALANCING NYCA	1,925	(12,622)	(26,878)	(32,913)	(31,826)	(30,610)	(27,639)
BALANCING NON-NYCA	5,085	3,886	10,320	7,158	1,271	2,740	4,926
BALANCING WHEELS	0	388	(904)	525	(260)	(1,489)	382
BALANCING VIRTUAL	(26,912)	(19,414)	(20,881)	(24,656)	(22,601)	(24,604)	(24,400)
UFELOSSES	48,729	49,998	43,862	47,708	44,604	44,637	42,578
	12	13	14	15	16	17	18
DAM NYCA	467,950	477,329	450,333	416,469	417,302	396,806	420,686
DAM NON-NYCA	13,262	17,271	19,121	12,053	11,628	11,568	12,030
DAM WHEELS	7,200	7,200	7,776	7,260	7,225	7,200	7,200
DAM VIRTUAL	32,493	40,294	22,040	23,058	27,461	25,052	28,780
BALANCING NYCA	(23,205)	(27,886)	(49,238)	(37,833)	(49,616)	(38,427)	(35,467)
BALANCING NON-NYCA	3,353	2,443	7,001	2,611	361	571	8,535
BALANCING WHEELS	1,117	400	(516)	340	25	(219)	(773)
BALANCING VIRTUAL	(32,493)	(40,294)	(22,040)	(23,058)	(27,461)	(25,052)	(28,780)
UFELOSSES	45,473	50,618	57,258	46,204	54,463	49,227	57,364
	19	20	21	22	23	24	25
DAM NYCA	480,883	474,633	460,601	433,374	395,937	353,055	363,277
DAM NON-NYCA	11,733	13,945	24,165	23,396	19,787	15,169	12,217
DAM WHEELS	8,171	7,200	7,719	7,732	7,872	7,200	7,830
DAM VIRTUAL	35,193	27,545	21,550	26,882	23,502	20,979	24,445
BALANCING NYCA	(47,051)	(60,846)	(58,402)	(50,484)	(74,360)	(44,074)	(39,729)
BALANCING NON-NYCA	8,508	3,886	4,123	7,482	11,016	3,277	5,215
BALANCING WHEELS	(748)	500	(758)	(1,012)	(2,047)	(3,432)	(3,239)
BALANCING VIRTUAL	(35,193)	(27,545)	(21,550)	(26,882)	(23,502)	(20,979)	(24,445)
UFELOSSES	66,461	66,241	70,696	73,251	71,587	53,536	51,644
	26	27	28	29	30		
DAM NYCA	396,591	395,615	396,008	392,104	387,533		
DAM NON-NYCA	17,663	19,149	11,597	10,287	9,647		
DAM WHEELS	7,200	7,200	7,252	7,200	7,200		
DAM VIRTUAL	19,337	27,959	25,293	22,690	22,061		
BALANCING NYCA	(52,967)	(57,141)	(49,537)	(50,026)	(47,977)		
BALANCING NON-NYCA	7,957	9,097	5,211	2,723	3,910		
BALANCING WHEELS	(1,446)	(1,847)	(1,223)	(1,040)	(1,358)		
BALANCING VIRTUAL	(19,337)	(27,959)	(25,293)	(22,690)	(22,061)		
UFELOSSES	69,044	73,309	61,039	57,268	55,889		



SETTLEMENTS REPORT  
September 2022 Settlement Adjustment  
February 7, 2023

**4-Month Settlement Adjustment – Market Withdrawals Analysis**

	MONDAY	TUESDAY	WEDNESDAY	THURSDAY	FRIDAY	SATURDAY	SUNDAY
				1	2	3	4
DAM NYCA				483,858	458,830	441,551	442,113
DAM NON-NYCA				19,582	14,834	13,862	11,457
DAM WHEELS				7,200	7,610	7,843	7,200
DAM VIRTUAL				20,660	19,640	20,383	29,401
BALANCING NYCA				(58,866)	(53,121)	(43,256)	(13,593)
BALANCING NON-NYCA				7,453	3,678	6,668	1,960
BALANCING WHEELS				150	(410)	(643)	0
BALANCING VIRTUAL				(20,660)	(19,640)	(20,383)	(29,401)
UFE/LOSSES				76,157	64,655	59,949	54,742
	5	6	7	8	9	10	11
DAM NYCA	437,523	451,962	441,183	443,228	444,739	428,871	422,243
DAM NON-NYCA	9,363	11,837	8,857	18,364	16,444	11,969	9,267
DAM WHEELS	7,200	7,200	8,352	7,200	7,860	8,745	7,200
DAM VIRTUAL	26,912	19,414	20,881	24,656	22,601	24,604	24,400
BALANCING NYCA	1,739	(12,750)	(27,155)	(33,174)	(32,082)	(30,915)	(27,975)
BALANCING NON-NYCA	5,085	3,886	10,320	7,158	1,271	2,740	4,926
BALANCING WHEELS	0	388	(904)	525	(260)	(1,489)	362
BALANCING VIRTUAL	(26,912)	(19,414)	(20,881)	(24,656)	(22,601)	(24,604)	(24,400)
UFE/LOSSES	48,665	49,956	43,820	47,683	44,584	44,629	42,582
	12	13	14	15	16	17	18
DAM NYCA	467,950	477,329	450,333	416,469	417,302	396,606	420,686
DAM NON-NYCA	13,262	17,271	19,121	12,053	11,628	11,568	12,030
DAM WHEELS	7,200	7,200	7,776	7,260	7,225	7,200	7,200
DAM VIRTUAL	32,493	40,294	22,040	23,058	27,461	25,052	28,780
BALANCING NYCA	(23,446)	(28,140)	(49,449)	(38,039)	(49,773)	(38,389)	(35,451)
BALANCING NON-NYCA	3,353	2,443	7,001	2,611	361	571	8,535
BALANCING WHEELS	1,117	400	(516)	340	25	(219)	(773)
BALANCING VIRTUAL	(32,493)	(40,294)	(22,040)	(23,058)	(27,461)	(25,052)	(28,780)
UFE/LOSSES	45,467	50,635	57,225	46,182	54,436	49,185	57,337
	19	20	21	22	23	24	25
DAM NYCA	480,883	474,633	460,601	433,374	395,937	353,055	363,277
DAM NON-NYCA	11,733	13,945	24,165	23,396	19,787	15,169	12,217
DAM WHEELS	8,171	7,200	7,719	7,732	7,872	7,200	7,830
DAM VIRTUAL	35,193	27,545	21,550	26,882	23,502	20,979	24,445
BALANCING NYCA	(47,098)	(60,941)	(58,416)	(50,387)	(74,346)	(44,036)	(39,695)
BALANCING NON-NYCA	8,508	3,886	4,123	7,482	11,016	3,277	5,215
BALANCING WHEELS	(746)	500	(758)	(1,012)	(2,047)	(3,432)	(3,239)
BALANCING VIRTUAL	(35,193)	(27,545)	(21,550)	(26,882)	(23,502)	(20,979)	(24,445)
UFE/LOSSES	66,444	66,213	70,599	73,161	71,569	53,487	51,597
	26	27	28	29	30		
DAM NYCA	396,591	395,615	396,008	392,104	387,533		
DAM NON-NYCA	17,663	19,149	11,597	10,287	9,647		
DAM WHEELS	7,200	7,200	7,252	7,200	7,200		
DAM VIRTUAL	19,337	27,959	25,293	22,690	22,061		
BALANCING NYCA	(52,869)	(57,068)	(49,509)	(49,795)	(47,718)		
BALANCING NON-NYCA	7,957	9,097	5,211	2,723	3,910		
BALANCING WHEELS	(1,446)	(1,847)	(1,223)	(1,040)	(1,358)		
BALANCING VIRTUAL	(19,337)	(27,959)	(25,293)	(22,690)	(22,061)		
UFE/LOSSES	68,984	73,260	61,003	57,037	55,665		

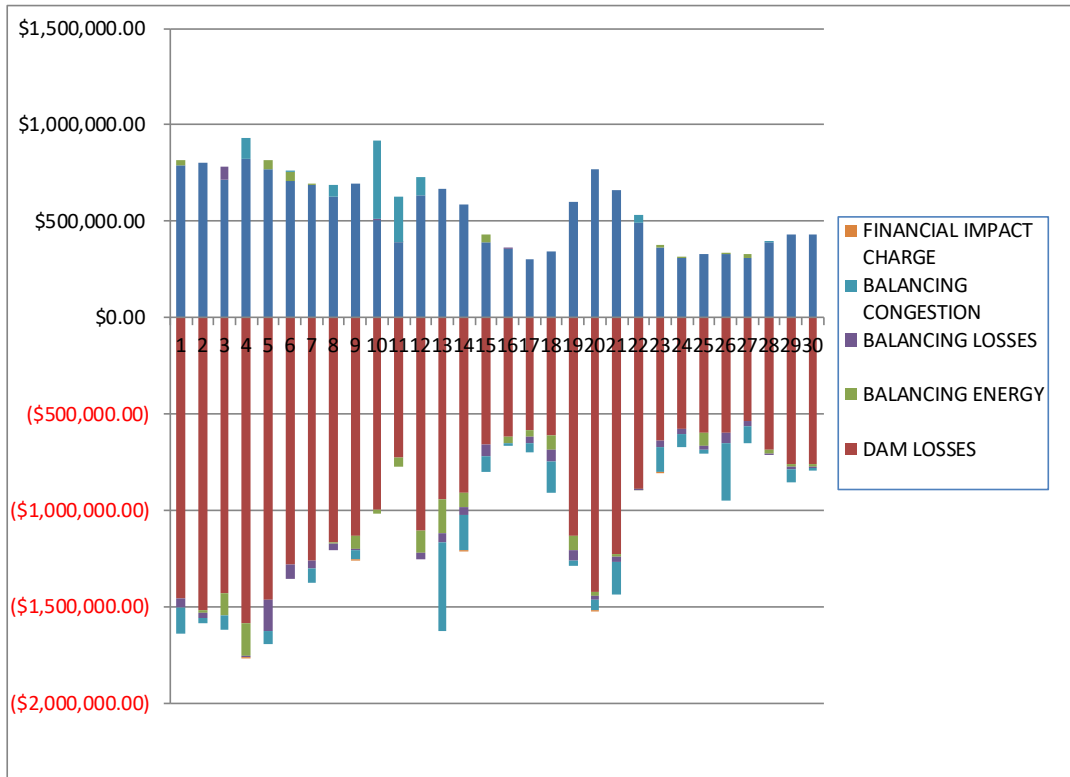




**SETTLEMENTS REPORT**  
**September 2022 Settlement Adjustment**  
**February 7, 2023**

**Initial Settlement – Market Residuals Analysis**

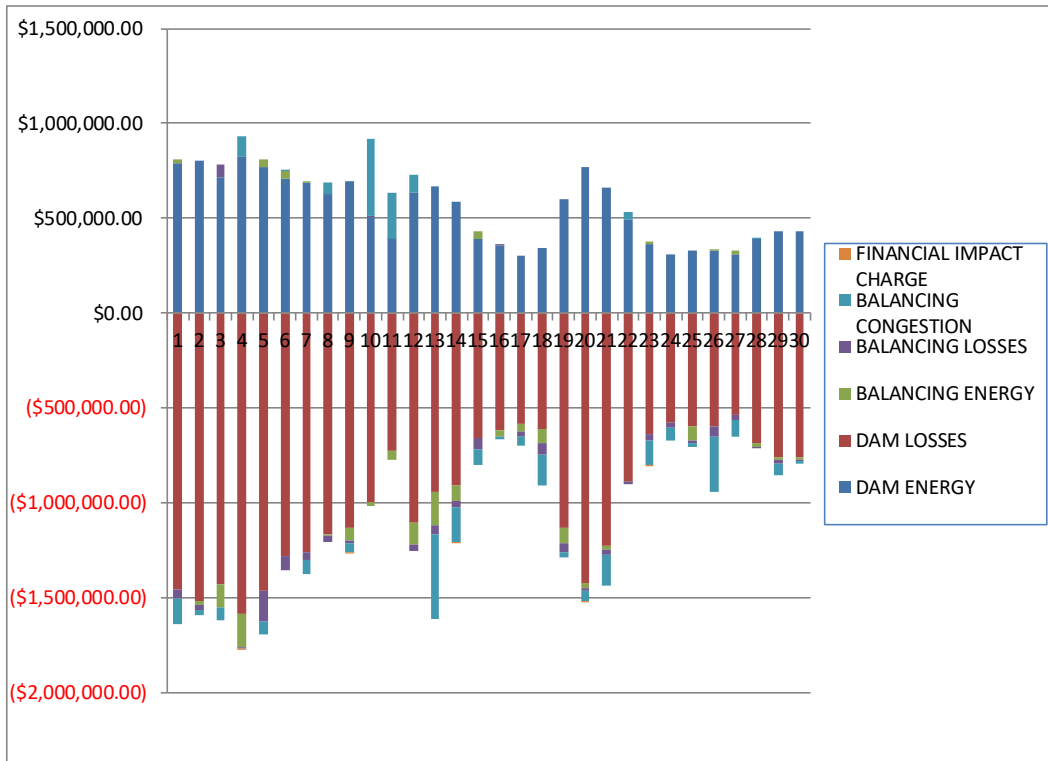
	MONDAY	TUESDAY	WEDNESDAY	THURSDAY	FRIDAY	SATURDAY	SUNDAY
				1	2	3	4
DAM ENERGY				\$789,757.15	\$806,892.50	\$714,268.77	\$825,181.14
DAM LOSSES				(\$1,456,712.11)	(\$1,515,821.43)	(\$1,425,319.13)	(\$1,582,843.78)
BALANCING ENERGY				\$24,173.01	(\$16,306.74)	(\$121,249.54)	(\$170,125.43)
BALANCING LOSSES				(\$47,269.23)	(\$26,986.22)	\$71,011.81	(\$7,471.38)
BALANCING CONGESTION				(\$130,610.94)	(\$26,710.69)	(\$68,680.88)	\$104,456.32
FINACIAL IMPACT CHARGE				\$0.00	\$0.00	\$0.00	(\$6,353.02)
	5	6	7	8	9	10	11
DAM ENERGY	\$769,060.86	\$709,583.49	\$689,449.82	\$628,460.37	\$697,900.30	\$508,425.19	\$388,961.72
DAM LOSSES	(\$1,462,137.09)	(\$1,279,622.03)	(\$1,256,180.33)	(\$1,161,970.13)	(\$1,132,419.46)	(\$994,206.99)	(\$722,753.89)
BALANCING ENERGY	\$50,425.21	\$43,618.27	\$7,949.49	(\$9,977.27)	(\$63,504.07)	(\$19,521.03)	(\$47,701.86)
BALANCING LOSSES	(\$160,241.00)	(\$74,429.31)	(\$46,061.06)	(\$33,698.05)	(\$11,944.58)	\$1,623.70	\$4,911.06
BALANCING CONGESTION	(\$68,583.14)	\$3,277.85	(\$70,628.14)	\$63,282.31	(\$47,698.91)	\$409,004.63	\$235,899.14
FINACIAL IMPACT CHARGE	\$0.00	\$0.00	\$0.00	\$0.00	(\$13.52)	\$0.00	\$0.00
	12	13	14	15	16	17	18
DAM ENERGY	\$631,235.13	\$665,255.88	\$584,445.87	\$390,831.72	\$357,376.88	\$304,886.89	\$340,958.79
DAM LOSSES	(\$1,105,965.31)	(\$942,746.92)	(\$909,591.49)	(\$655,567.03)	(\$613,702.45)	(\$582,219.50)	(\$613,093.55)
BALANCING ENERGY	(\$111,198.32)	(\$173,136.57)	(\$74,385.62)	\$42,036.51	(\$39,206.06)	(\$36,237.58)	(\$73,427.78)
BALANCING LOSSES	(\$32,075.32)	(\$47,176.73)	(\$39,346.86)	(\$60,468.06)	\$2,843.55	(\$29,417.52)	(\$55,301.39)
BALANCING CONGESTION	\$99,516.01	(\$459,125.53)	(\$179,065.52)	(\$82,098.30)	(\$8,990.53)	(\$46,685.29)	(\$164,215.77)
FINACIAL IMPACT CHARGE	\$0.00	\$0.00	(\$13.80)	\$0.00	\$0.00	\$0.00	\$0.00
	19	20	21	22	23	24	25
DAM ENERGY	\$601,795.25	\$768,644.77	\$661,468.44	\$490,672.62	\$363,155.64	\$307,368.51	\$327,406.76
DAM LOSSES	(\$1,133,698.47)	(\$1,418,384.10)	(\$1,228,266.92)	(\$883,870.07)	(\$637,244.19)	(\$577,193.73)	(\$598,276.21)
BALANCING ENERGY	(\$74,596.16)	(\$26,367.93)	(\$12,547.30)	(\$2,635.19)	\$15,911.35	\$1,610.59	(\$68,532.21)
BALANCING LOSSES	(\$48,889.29)	(\$15,845.61)	(\$27,511.99)	(\$8,101.72)	(\$36,029.92)	(\$22,723.75)	(\$18,836.58)
BALANCING CONGESTION	(\$29,818.26)	(\$53,405.98)	(\$165,372.96)	\$42,489.99	(\$127,545.00)	(\$72,099.78)	(\$20,366.36)
FINACIAL IMPACT CHARGE	\$0.00	(\$608.14)	\$0.00	\$0.00	(\$185.67)	\$0.00	\$0.00
	26	27	28	29	30		
DAM ENERGY	\$330,494.04	\$309,729.91	\$391,783.31	\$432,685.56	\$433,080.05		
DAM LOSSES	(\$594,410.71)	(\$534,874.69)	(\$685,942.36)	(\$762,072.49)	(\$759,810.09)		
BALANCING ENERGY	\$4,004.49	\$19,417.07	(\$18,190.87)	(\$8,291.14)	(\$14,623.21)		
BALANCING LOSSES	(\$55,031.95)	(\$26,716.05)	(\$3,054.10)	(\$18,515.25)	(\$6,031.13)		
BALANCING CONGESTION	(\$297,676.69)	(\$90,447.92)	\$640.93	(\$66,375.35)	(\$11,858.70)		
FINACIAL IMPACT CHARGE	\$0.00	\$0.00	\$0.00	\$0.00	\$0.00		



**SETTLEMENTS REPORT**  
**September 2022 Settlement Adjustment**  
**February 7, 2023**

**4-Month Settlement Adjustment – Market Residuals Analysis**

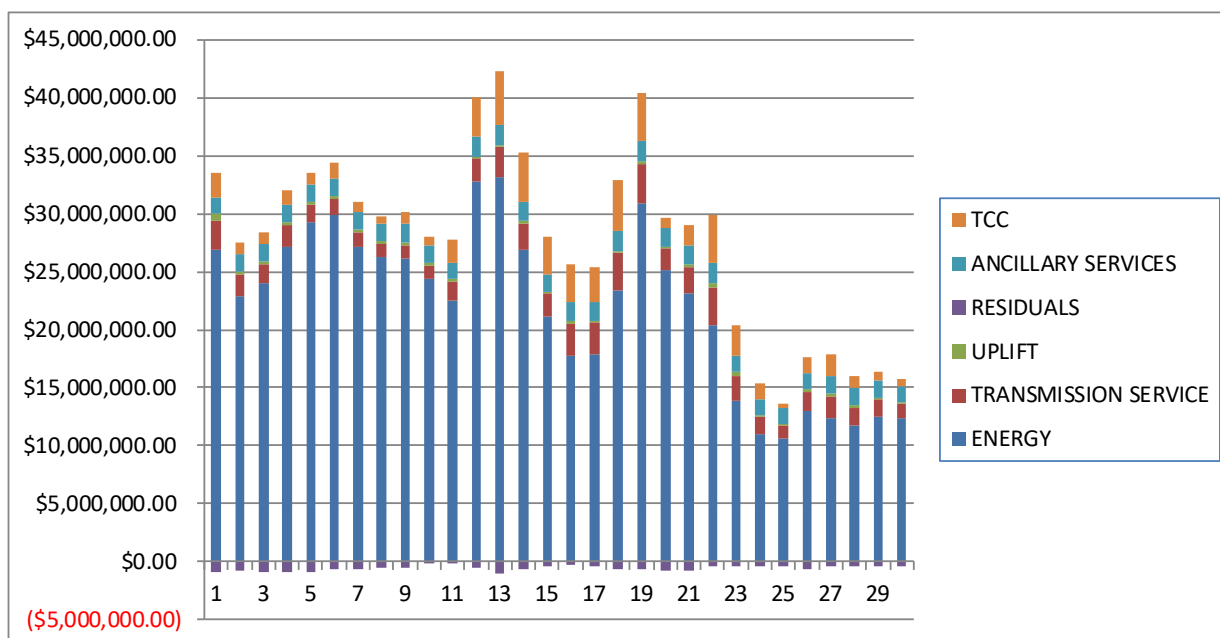
	MONDAY	TUESDAY	WEDNESDAY	THURSDAY	FRIDAY	SATURDAY	SUNDAY
				1	2	3	4
DAM ENERGY				\$789,757.15	\$806,892.49	\$714,268.77	\$825,181.14
DAM LOSSES				(\$1,456,712.11)	(\$1,515,821.42)	(\$1,425,319.13)	(\$1,582,843.78)
BALANCING ENERGY				\$19,810.97	(\$21,163.50)	(\$126,251.53)	(\$175,819.61)
BALANCING LOSSES				(\$47,124.54)	(\$26,805.21)	\$71,024.91	(\$7,230.14)
BALANCING CONGESTION				(\$130,977.46)	(\$25,398.07)	(\$68,685.14)	\$104,538.89
FINACIAL IMPACT CHARGE				\$0.00	\$0.00	\$0.00	(\$6,353.05)
	5	6	7	8	9	10	11
DAM ENERGY	\$769,060.87	\$709,583.49	\$689,449.82	\$628,460.38	\$697,900.29	\$508,425.20	\$388,961.71
DAM LOSSES	(\$1,462,137.10)	(\$1,279,622.03)	(\$1,256,180.32)	(\$1,161,970.13)	(\$1,132,419.47)	(\$994,206.99)	(\$722,753.89)
BALANCING ENERGY	\$44,009.05	\$40,358.31	\$4,864.98	(\$10,546.17)	(\$64,501.65)	(\$19,148.75)	(\$47,325.61)
BALANCING LOSSES	(\$162,506.09)	(\$74,264.13)	(\$46,069.94)	(\$33,527.02)	(\$11,788.60)	\$1,745.32	\$5,113.33
BALANCING CONGESTION	(\$69,493.82)	\$2,761.34	(\$73,386.81)	\$61,291.86	(\$48,503.45)	\$410,056.70	\$239,036.02
FINACIAL IMPACT CHARGE	\$0.00	\$0.00	\$0.00	\$0.00	(\$13.54)	\$0.00	\$0.00
	12	13	14	15	16	17	18
DAM ENERGY	\$631,235.13	\$665,255.87	\$584,445.87	\$390,831.71	\$357,376.88	\$304,886.89	\$340,958.79
DAM LOSSES	(\$1,105,965.31)	(\$942,746.93)	(\$909,591.48)	(\$655,567.03)	(\$613,702.45)	(\$582,219.49)	(\$613,093.56)
BALANCING ENERGY	(\$111,191.39)	(\$172,016.02)	(\$76,142.90)	\$41,744.62	(\$40,067.53)	(\$38,116.88)	(\$73,592.48)
BALANCING LOSSES	(\$31,893.56)	(\$46,823.16)	(\$39,274.88)	(\$60,375.78)	\$2,944.61	(\$29,426.87)	(\$55,304.59)
BALANCING CONGESTION	\$98,819.98	(\$452,475.03)	(\$179,090.20)	(\$82,154.63)	(\$8,973.14)	(\$46,906.20)	(\$164,481.25)
FINACIAL IMPACT CHARGE	\$0.00	\$0.00	(\$13.79)	\$0.00	\$0.00	\$0.00	\$0.00
	19	20	21	22	23	24	25
DAM ENERGY	\$601,795.25	\$768,644.77	\$661,468.44	\$490,672.62	\$363,155.63	\$307,368.51	\$327,406.76
DAM LOSSES	(\$1,133,698.47)	(\$1,418,384.09)	(\$1,228,266.92)	(\$883,870.07)	(\$637,244.19)	(\$577,193.73)	(\$598,276.21)
BALANCING ENERGY	(\$76,048.80)	(\$28,205.86)	(\$16,677.34)	(\$5,669.01)	\$15,399.99	(\$164.81)	(\$70,097.17)
BALANCING LOSSES	(\$48,769.54)	(\$15,798.62)	(\$27,447.69)	(\$8,067.50)	(\$35,990.07)	(\$22,652.64)	(\$18,792.25)
BALANCING CONGESTION	(\$29,515.22)	(\$52,314.61)	(\$163,831.57)	\$44,080.41	(\$127,401.16)	(\$72,044.23)	(\$20,389.03)
FINACIAL IMPACT CHARGE	\$0.00	(\$608.12)	\$0.00	\$0.00	(\$185.61)	\$0.00	\$0.00
	26	27	28	29	30		
DAM ENERGY	\$330,494.04	\$309,729.91	\$391,783.31	\$432,685.56	\$433,080.06		
DAM LOSSES	(\$594,410.71)	(\$534,874.69)	(\$685,942.36)	(\$762,072.49)	(\$759,810.09)		
BALANCING ENERGY	\$1,995.05	\$18,308.44	(\$19,441.82)	(\$8,801.06)	(\$15,221.64)		
BALANCING LOSSES	(\$54,943.76)	(\$26,801.60)	(\$2,925.37)	(\$18,417.42)	(\$5,960.00)		
BALANCING CONGESTION	(\$288,876.57)	(\$90,555.16)	\$610.76	(\$66,404.33)	(\$11,915.86)		
FINACIAL IMPACT CHARGE	\$0.00	\$0.00	\$0.00	\$0.00	\$0.00		



**SETTLEMENTS REPORT**  
**September 2022 Settlement Adjustment**  
**February 7, 2023**

**Initial Settlement – Market Costs Analysis**

	MONDAY	TUESDAY	WEDNESDAY	THURSDAY	FRIDAY	SATURDAY	SUNDAY
ENERGY				1	2	3	4
TRANSMISSION SERVICE				\$26,912,110.10	\$22,928,025.19	\$24,058,354.32	\$27,092,436.28
UPLIFT				\$2,440,324.03	\$1,813,561.14	\$1,614,503.00	\$1,934,991.09
RESIDUALS				\$634,785.33	\$266,900.08	\$242,939.00	\$249,650.03
ANCILLARY SERVICES				(\$820,662.12)	(\$778,932.58)	(\$829,968.97)	(\$837,156.15)
TCC				\$1,416,533.43	\$1,432,751.91	\$1,430,140.27	\$1,532,392.74
				\$2,094,332.39	\$1,049,622.66	\$1,017,368.86	\$1,210,327.82
	5	6	7	8	9	10	11
ENERGY	\$29,195,318.87	\$29,821,785.44	\$27,126,443.57	\$26,191,770.71	\$26,078,006.18	\$24,357,234.48	\$22,552,814.53
TRANSMISSION SERVICE	\$1,559,902.03	\$1,486,164.54	\$1,282,328.06	\$1,170,181.36	\$1,217,644.53	\$1,157,733.39	\$1,562,545.47
UPLIFT	\$204,675.62	\$205,608.13	\$253,107.09	\$260,142.82	\$197,789.33	\$177,369.36	\$202,470.66
RESIDUALS	(\$871,475.16)	(\$597,571.73)	(\$675,470.22)	(\$513,902.77)	(\$557,680.24)	(\$94,674.50)	(\$140,683.83)
ANCILLARY SERVICES	\$1,521,258.79	\$1,522,134.17	\$1,491,350.74	\$1,459,965.73	\$1,662,490.26	\$1,555,848.11	\$1,461,746.65
TCC	\$1,047,463.05	\$1,326,734.70	\$814,998.48	\$660,843.84	\$976,817.06	\$750,381.39	\$1,961,342.86
	12	13	14	15	16	17	18
ENERGY	\$32,765,184.56	\$33,082,459.73	\$26,868,153.02	\$21,081,532.44	\$17,748,636.18	\$17,897,566.63	\$23,430,510.80
TRANSMISSION SERVICE	\$1,960,119.46	\$2,664,281.79	\$2,301,983.54	\$1,997,318.48	\$2,812,320.13	\$2,680,725.82	\$3,187,279.51
UPLIFT	\$93,368.68	\$154,640.88	\$146,187.84	\$180,877.35	\$204,532.80	\$163,243.91	\$75,331.70
RESIDUALS	(\$518,487.81)	(\$956,929.87)	(\$617,957.42)	(\$365,265.16)	(\$301,678.61)	(\$389,673.00)	(\$565,079.70)
ANCILLARY SERVICES	\$1,811,792.75	\$1,719,553.38	\$1,677,128.67	\$1,492,566.95	\$1,581,856.01	\$1,609,282.38	\$1,867,310.07
TCC	\$3,406,765.12	\$4,670,364.38	\$4,261,672.91	\$3,194,243.66	\$3,221,008.55	\$3,020,151.42	\$4,297,650.77
	19	20	21	22	23	24	25
ENERGY	\$30,835,499.73	\$25,151,992.21	\$23,071,993.65	\$20,380,757.30	\$13,909,130.64	\$10,971,739.76	\$10,671,866.04
TRANSMISSION SERVICE	\$3,473,771.86	\$1,816,330.82	\$2,349,566.27	\$3,219,268.18	\$2,142,341.45	\$1,502,072.43	\$1,074,828.75
UPLIFT	\$184,914.71	\$203,776.54	\$258,429.47	\$421,355.85	\$303,291.79	\$165,211.42	\$100,812.39
RESIDUALS	(\$685,206.93)	(\$745,966.99)	(\$772,230.73)	(\$361,444.37)	(\$421,937.79)	(\$363,038.16)	(\$378,604.60)
ANCILLARY SERVICES	\$1,742,427.19	\$1,540,061.80	\$1,575,093.06	\$1,762,696.93	\$1,453,155.56	\$1,368,646.50	\$1,391,604.01
TCC	\$4,111,741.52	\$917,213.52	\$1,769,456.28	\$4,148,295.64	\$2,539,063.25	\$1,399,054.34	\$363,665.39
	26	27	28	29	30		
ENERGY	\$13,017,952.08	\$12,355,428.20	\$11,801,568.91	\$12,561,058.55	\$12,353,310.64		
TRANSMISSION SERVICE	\$1,653,059.87	\$1,880,701.86	\$1,502,974.57	\$1,406,632.80	\$1,238,878.48		
UPLIFT	\$165,950.08	\$209,141.12	\$197,146.43	\$153,324.82	\$179,442.57		
RESIDUALS	(\$612,620.82)	(\$322,891.68)	(\$314,763.09)	(\$422,568.67)	(\$359,243.08)		
ANCILLARY SERVICES	\$1,470,787.71	\$1,500,084.67	\$1,462,694.93	\$1,454,633.21	\$1,409,127.08		
TCC	\$1,254,807.04	\$1,912,780.33	\$1,087,680.14	\$860,842.44	\$518,485.48		



**SETTLEMENTS REPORT**  
 September 2022 Settlement Adjustment  
 February 7, 2023

**4-Month Settlement Adjustment – Market Costs Analysis**

	MONDAY	TUESDAY	WEDNESDAY	THURSDAY	FRIDAY	SATURDAY	SUNDAY
				1	2	3	4
ENERGY				\$26,902,375.62	\$22,907,536.81	\$24,040,743.92	\$27,073,487.51
TRANSMISSION SERVICE				\$2,439,186.00	\$1,811,719.51	\$1,612,388.63	\$1,932,161.71
UPLIFT				\$634,722.23	\$267,140.19	\$242,940.19	\$345,518.41
RESIDUALS				(\$825,245.99)	(\$782,295.71)	(\$834,962.12)	(\$842,526.55)
ANCILLARY SERVICES				\$1,482,367.13	\$1,447,584.12	\$1,440,264.54	\$1,550,023.93
TCC				\$2,027,495.05	\$1,033,181.58	\$1,005,408.23	\$1,190,252.29
	5	6	7	8	9	10	11
ENERGY	\$29,177,991.48	\$29,808,643.28	\$27,097,924.36	\$26,170,609.36	\$26,059,215.21	\$24,328,588.78	\$22,516,020.66
TRANSMISSION SERVICE	\$1,557,532.75	\$1,483,879.42	\$1,280,296.50	\$1,168,333.49	\$1,215,689.71	\$1,155,792.13	\$1,560,430.23
UPLIFT	\$204,675.61	\$205,608.12	\$252,062.04	\$260,145.76	\$197,791.43	\$177,369.36	\$202,441.47
RESIDUALS	(\$881,067.09)	(\$601,183.02)	(\$681,322.27)	(\$516,291.08)	(\$559,326.42)	(\$93,128.52)	(\$136,968.44)
ANCILLARY SERVICES	\$1,528,269.31	\$1,552,219.79	\$1,517,914.59	\$1,484,891.29	\$1,691,213.13	\$1,567,203.63	\$1,461,096.13
TCC	\$1,038,274.13	\$1,294,681.25	\$786,572.44	\$634,284.60	\$946,376.24	\$737,306.30	\$1,960,114.95
	12	13	14	15	16	17	18
ENERGY	\$32,735,750.71	\$33,052,566.52	\$26,850,321.01	\$21,066,099.13	\$17,736,502.06	\$17,899,305.91	\$23,430,267.36
TRANSMISSION SERVICE	\$1,958,218.50	\$2,661,673.88	\$2,300,595.58	\$1,996,029.74	\$2,810,879.83	\$2,679,569.05	\$3,185,758.33
UPLIFT	\$93,370.35	\$154,697.19	\$146,168.43	\$180,877.61	\$204,532.93	\$163,241.88	\$75,333.61
RESIDUALS	(\$518,995.15)	(\$948,805.27)	(\$619,667.38)	(\$365,521.11)	(\$302,421.63)	(\$391,782.55)	(\$565,513.09)
ANCILLARY SERVICES	\$1,816,145.58	\$1,792,719.52	\$1,641,311.54	\$1,481,837.24	\$1,550,882.10	\$1,546,915.54	\$1,751,818.36
TCC	\$3,400,736.80	\$4,594,940.49	\$4,296,256.13	\$3,203,833.04	\$3,250,727.35	\$3,081,542.24	\$4,411,840.52
	19	20	21	22	23	24	25
ENERGY	\$30,831,067.53	\$25,142,609.41	\$23,065,706.26	\$20,383,862.03	\$13,909,794.61	\$10,972,954.58	\$10,672,936.84
TRANSMISSION SERVICE	\$3,472,642.57	\$1,815,258.62	\$2,348,518.95	\$3,218,403.10	\$2,141,144.65	\$1,500,690.24	\$1,073,232.05
UPLIFT	\$184,554.13	\$205,517.65	\$258,312.23	\$420,193.60	\$303,291.80	\$165,211.43	\$100,812.31
RESIDUALS	(\$686,236.78)	(\$746,666.53)	(\$774,755.08)	(\$362,853.55)	(\$422,265.41)	(\$364,686.90)	(\$380,147.90)
ANCILLARY SERVICES	\$1,780,866.12	\$1,531,860.80	\$1,543,853.65	\$1,641,254.48	\$1,412,987.75	\$1,334,815.57	\$1,369,500.22
TCC	\$4,072,324.64	\$924,455.79	\$1,799,791.02	\$4,269,000.61	\$2,578,236.23	\$1,431,655.84	\$384,402.63
	26	27	28	29	30		
ENERGY	\$13,028,393.49	\$12,357,680.52	\$11,799,122.71	\$12,557,469.02	\$12,355,561.92		
TRANSMISSION SERVICE	\$1,651,596.77	\$1,879,432.66	\$1,501,929.73	\$1,405,580.13	\$1,237,545.42		
UPLIFT	\$164,032.90	\$209,141.23	\$197,131.23	\$153,241.39	\$179,442.19		
RESIDUALS	(\$605,741.95)	(\$324,193.10)	(\$315,915.48)	(\$423,009.74)	(\$359,827.53)		
ANCILLARY SERVICES	\$1,448,068.11	\$1,479,351.73	\$1,447,812.73	\$1,449,674.70	\$1,405,378.31		
TCC	\$1,275,749.30	\$1,932,477.62	\$1,101,613.17	\$864,785.55	\$521,130.11		

