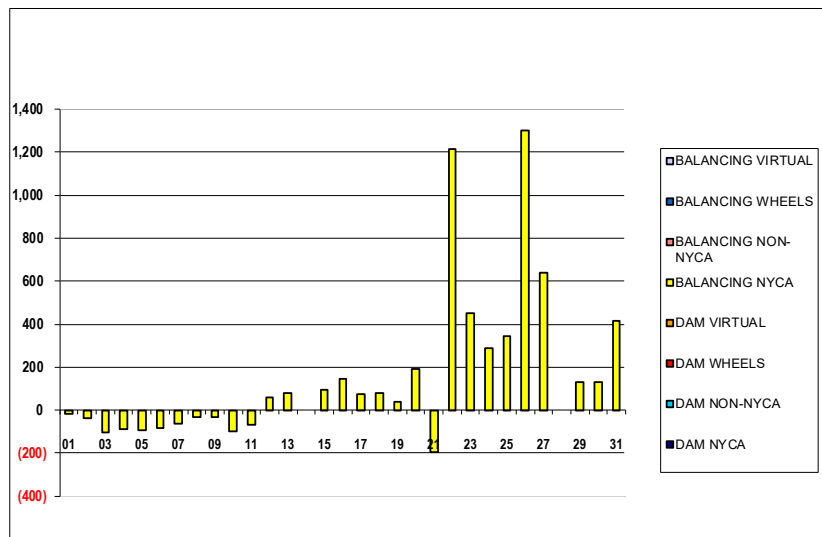


SETTLEMENTS REPORT
 October 2022 Settlement Adjustment
 March 7, 2023

Settlement Adjustment – Market Supply Delta Analysis

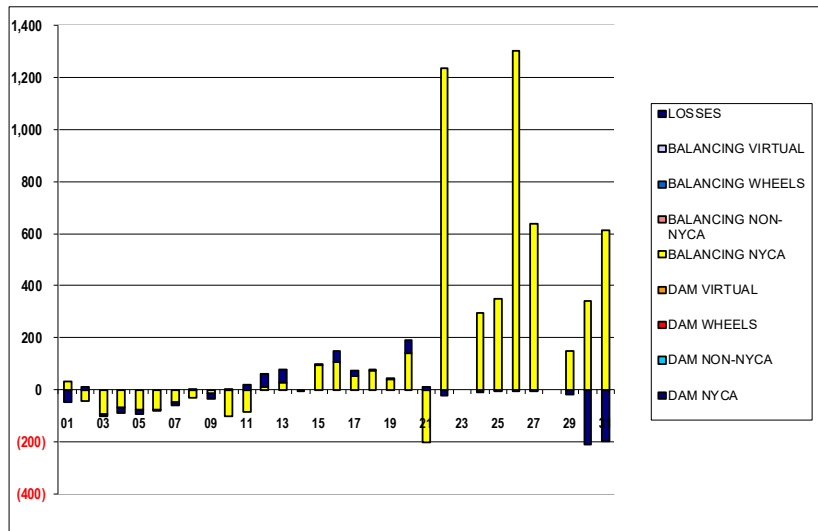
	MONDAY	TUESDAY	WEDNESDAY	THURSDAY	FRIDAY	SATURDAY	SUNDAY
DAM NYCA						1	2
DAM NON-NYCA						0	0
DAM WHEELS						0	0
DAM VIRTUAL						0	0
BALANCING NYCA						(15)	(35)
BALANCING NON-NYCA						0	0
BALANCING WHEELS						0	0
BALANCING VIRTUAL						0	0
	3	4	5	6	7	8	9
DAM NYCA	0	0	0	0	0	0	0
DAM NON-NYCA	0	0	0	0	0	0	0
DAM WHEELS	0	0	0	0	0	0	0
DAM VIRTUAL	0	0	0	0	0	0	0
BALANCING NYCA	(102)	(89)	(92)	(81)	(61)	(31)	(33)
BALANCING NON-NYCA	0	0	0	0	0	0	0
BALANCING WHEELS	0	0	0	0	0	0	0
BALANCING VIRTUAL	0	0	0	0	0	0	0
	10	11	12	13	14	15	16
DAM NYCA	0	0	0	0	0	0	0
DAM NON-NYCA	0	0	0	0	0	0	0
DAM WHEELS	0	0	0	0	0	0	0
DAM VIRTUAL	0	0	0	0	0	0	0
BALANCING NYCA	(96)	(68)	60	77	0	95	147
BALANCING NON-NYCA	0	0	0	0	0	0	0
BALANCING WHEELS	0	0	0	0	0	0	0
BALANCING VIRTUAL	0	0	0	0	0	0	0
	17	18	19	20	21	22	23
DAM NYCA	0	0	0	0	0	0	0
DAM NON-NYCA	0	0	0	0	0	0	0
DAM WHEELS	0	0	0	0	0	0	0
DAM VIRTUAL	0	0	0	0	0	0	0
BALANCING NYCA	73	79	41	191	(193)	1,212	452
BALANCING NON-NYCA	0	0	0	0	0	0	0
BALANCING WHEELS	0	0	0	0	0	0	0
BALANCING VIRTUAL	0	0	0	0	0	0	0
	24	25	26	27	28	29	30
DAM NYCA	0	0	0	0	0	0	0
DAM NON-NYCA	0	0	0	0	0	0	0
DAM WHEELS	0	0	0	0	0	0	0
DAM VIRTUAL	0	0	0	0	0	0	0
BALANCING NYCA	287	344	1,301	640	0	132	132
BALANCING NON-NYCA	0	0	0	0	0	0	0
BALANCING WHEELS	0	0	0	0	0	0	0
BALANCING VIRTUAL	0	0	0	0	0	0	0
	31						
DAM NYCA	0						
DAM NON-NYCA	0						
DAM WHEELS	0						
DAM VIRTUAL	0						
BALANCING NYCA	417						
BALANCING NON-NYCA	0						
BALANCING WHEELS	0						
BALANCING VIRTUAL	0						



SETTLEMENTS REPORT
 October 2022 Settlement Adjustment
 March 7, 2023

Settlement Adjustment – Market Withdrawals Delta Analysis

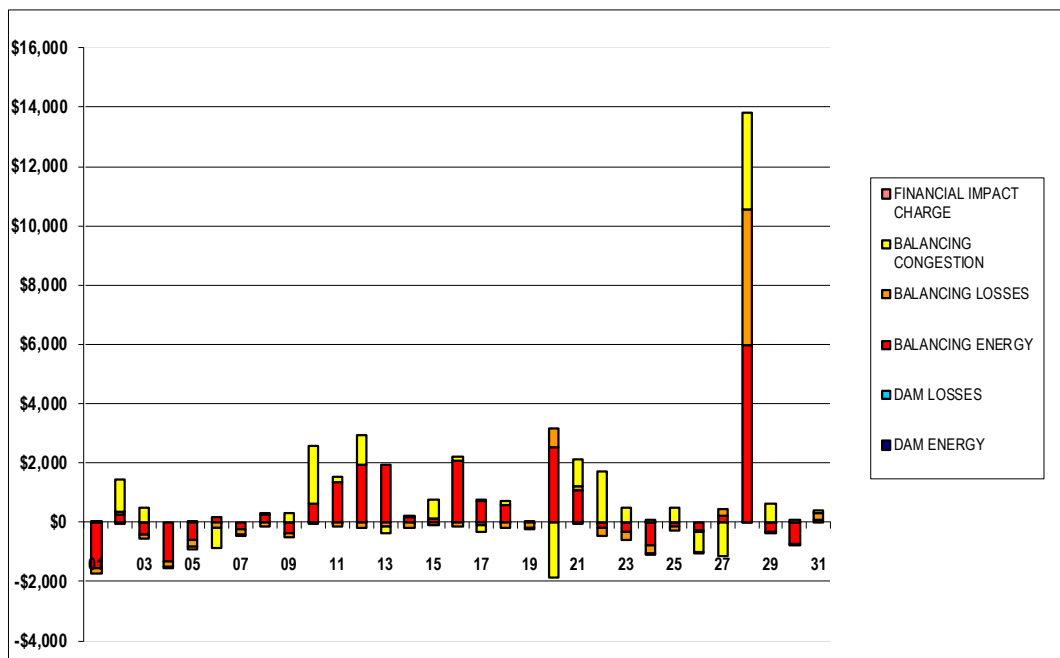
	MONDAY	TUESDAY	WEDNESDAY	THURSDAY	FRIDAY	SATURDAY	SUNDAY
DAM NYCA						1	2
DAM NON-NYCA						0	0
DAM WHEELS						0	0
DAM VIRTUAL						0	0
BALANCING NYCA						33	(45)
BALANCING NON-NYCA						0	0
BALANCING WHEELS						0	0
BALANCING VIRTUAL						0	0
UFE/LOSSES						(48)	10
DAM NYCA	3	4	5	6	7	8	9
DAM NON-NYCA	0	0	0	0	0	0	0
DAM WHEELS	0	0	0	0	0	0	0
DAM VIRTUAL	0	0	0	0	0	0	0
BALANCING NYCA	(93)	(67)	(77)	(76)	(48)	(32)	(15)
BALANCING NON-NYCA	0	0	0	0	0	0	0
BALANCING WHEELS	0	0	0	0	0	0	0
BALANCING VIRTUAL	0	0	0	0	0	0	0
UFE/LOSSES	(10)	(22)	(14)	(5)	(13)	1	(19)
DAM NYCA	10	11	12	13	14	15	16
DAM NON-NYCA	0	0	0	0	0	0	0
DAM WHEELS	0	0	0	0	0	0	0
DAM VIRTUAL	0	0	0	0	0	0	0
BALANCING NYCA	(101)	(87)	12	26	0	94	107
BALANCING NON-NYCA	0	0	0	0	0	0	0
BALANCING WHEELS	0	0	0	0	0	0	0
BALANCING VIRTUAL	0	0	0	0	0	0	0
UFE/LOSSES	4	19	48	51	(4)	1	40
DAM NYCA	17	18	19	20	21	22	23
DAM NON-NYCA	0	0	0	0	0	0	0
DAM WHEELS	0	0	0	0	0	0	0
DAM VIRTUAL	0	0	0	0	0	0	0
BALANCING NYCA	54	72	41	143	(202)	1,235	0
BALANCING NON-NYCA	0	0	0	0	0	0	0
BALANCING WHEELS	0	0	0	0	0	0	0
BALANCING VIRTUAL	0	0	0	0	0	0	0
UFE/LOSSES	19	8	0	49	9	(23)	0
DAM NYCA	24	25	26	27	28	29	30
DAM NON-NYCA	0	0	0	0	0	0	0
DAM WHEELS	0	0	0	0	0	0	0
DAM VIRTUAL	0	0	0	0	0	0	0
BALANCING NYCA	297	349	1,305	640	0	149	341
BALANCING NON-NYCA	0	0	0	0	0	0	0
BALANCING WHEELS	0	0	0	0	0	0	0
BALANCING VIRTUAL	0	0	0	0	0	0	0
UFE/LOSSES	(10)	(5)	(4)	(0)	0	(17)	(209)
DAM NYCA	31						
DAM NON-NYCA	0						
DAM WHEELS	0						
DAM VIRTUAL	0						
BALANCING NYCA	613						
BALANCING NON-NYCA	0						
BALANCING WHEELS	0						
BALANCING VIRTUAL	0						
UFE/LOSSES	(197)						



SETTLEMENTS REPORT
 October 2022 Settlement Adjustment
 March 7, 2023

Settlement Adjustment – Market Residuals Delta Analysis

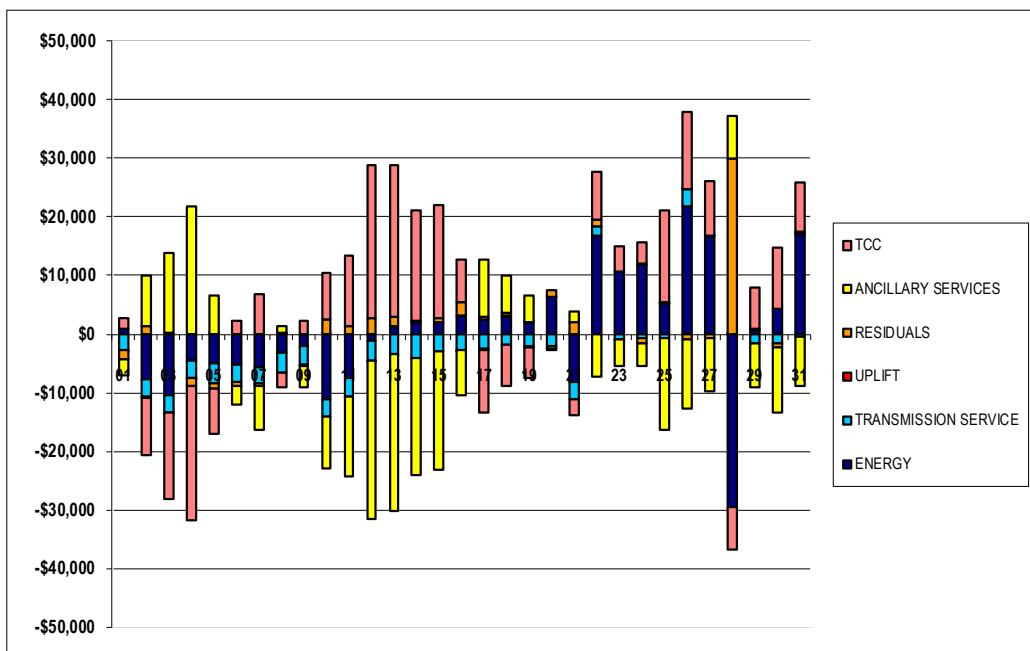
	MONDAY	TUESDAY	WEDNESDAY	THURSDAY	FRIDAY	SATURDAY	SUNDAY
						1	2
DAM ENERGY						\$0.00	\$0.01
DAM LOSSES						\$0.00	(\$0.01)
BALANCING ENERGY						(\$1,562.44)	\$282.50
BALANCING LOSSES						(\$168.89)	\$60.59
BALANCING CONGESTION						\$55.78	\$1,102.03
FINANCIAL IMPACT CHARGE						\$0.00	\$0.00
	3	4	5	6	7	8	9
DAM ENERGY	\$0.00	\$0.00	\$0.00	\$0.00	\$0.00	\$0.00	\$0.01
DAM LOSSES	\$0.01	\$0.00	\$0.01	(\$0.01)	\$0.00	\$0.00	\$0.00
BALANCING ENERGY	(\$432.18)	(\$1,306.58)	(\$574.22)	\$165.42	(\$246.72)	\$263.17	(\$363.10)
BALANCING LOSSES	(\$109.36)	(\$176.32)	(\$233.98)	(\$189.26)	(\$165.22)	(\$122.50)	(\$162.93)
BALANCING CONGESTION	\$482.01	(\$55.58)	(\$103.37)	(\$682.93)	(\$0.76)	\$50.64	\$303.65
FINANCIAL IMPACT CHARGE	\$0.00	\$0.00	\$0.00	\$0.00	\$0.00	\$0.00	\$0.00
	10	11	12	13	14	15	16
DAM ENERGY	\$0.00	(\$0.01)	\$0.01	\$0.00	(\$0.01)	\$0.01	\$0.00
DAM LOSSES	\$0.01	(\$0.01)	\$0.00	\$0.00	(\$0.01)	(\$0.01)	\$0.01
BALANCING ENERGY	\$647.06	\$1,353.10	\$1,942.67	\$1,956.58	\$161.40	\$145.17	\$2,081.69
BALANCING LOSSES	(\$5.73)	(\$141.75)	(\$190.94)	(\$148.88)	(\$194.49)	(\$112.67)	(\$131.22)
BALANCING CONGESTION	\$1,919.74	\$190.13	\$976.54	(\$214.58)	\$62.64	\$638.75	\$151.67
FINANCIAL IMPACT CHARGE	\$0.00	\$0.00	\$0.00	\$0.00	\$0.00	\$0.00	\$0.00
	17	18	19	20	21	22	23
DAM ENERGY	\$0.00	(\$0.01)	\$0.00	\$0.00	\$0.00	(\$0.01)	\$0.00
DAM LOSSES	\$0.01	\$0.01	(\$0.01)	\$0.00	\$0.01	\$0.00	\$0.00
BALANCING ENERGY	\$727.22	\$586.47	\$35.24	\$2,524.71	\$1,079.00	(\$182.24)	(\$332.24)
BALANCING LOSSES	(\$105.45)	(\$182.61)	(\$196.36)	\$622.14	\$126.58	(\$282.64)	(\$245.63)
BALANCING CONGESTION	(\$233.79)	\$111.68	(\$51.67)	(\$1,863.15)	\$902.17	\$1,702.84	\$506.55
FINANCIAL IMPACT CHARGE	\$0.08	\$0.00	\$0.00	\$0.00	(\$0.09)	\$0.00	\$0.00
	24	25	26	27	28	29	30
DAM ENERGY	\$0.01	\$0.00	\$0.00	(\$0.01)	\$0.01	(\$0.01)	\$0.00
DAM LOSSES	\$0.01	\$0.00	\$0.00	\$0.00	\$0.00	(\$0.01)	\$0.00
BALANCING ENERGY	(\$768.95)	(\$133.11)	(\$299.90)	\$226.68	\$5,976.00	(\$315.04)	(\$722.18)
BALANCING LOSSES	(\$284.87)	(\$159.43)	(\$32.12)	\$220.32	\$4,576.00	(\$69.79)	(\$46.85)
BALANCING CONGESTION	\$98.85	\$482.06	(\$663.50)	(\$1,128.37)	\$3,254.00	\$633.80	\$65.61
FINANCIAL IMPACT CHARGE	(\$0.06)	\$0.00	(\$0.04)	\$0.00	\$0.00	\$0.00	\$0.00
	31						
DAM ENERGY	\$0.00						
DAM LOSSES	\$0.00						
BALANCING ENERGY	\$66.27						
BALANCING LOSSES	\$250.18						
BALANCING CONGESTION	\$104.12						
FINANCIAL IMPACT CHARGE	\$0.00						



SETTLEMENTS REPORT
 October 2022 Settlement Adjustment
 March 7, 2023

Settlement Adjustment – Market Costs Delta Analysis

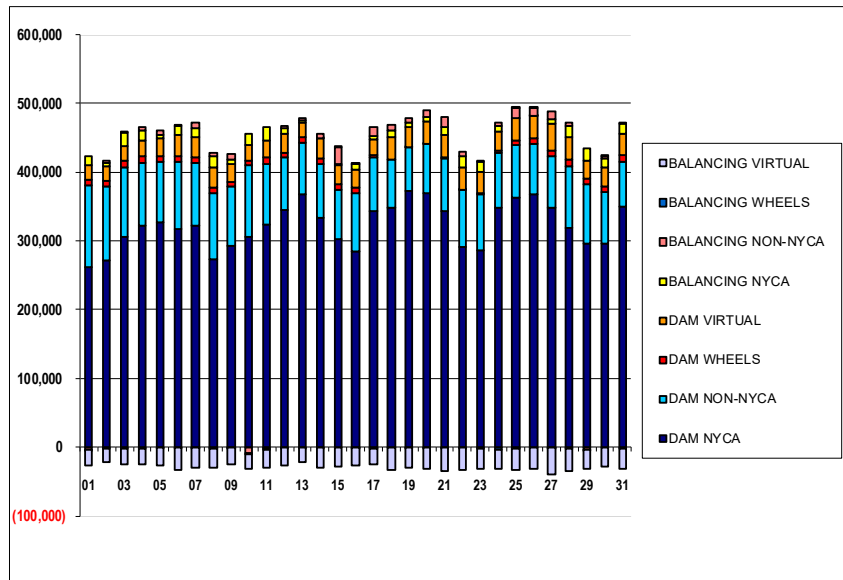
	MONDAY	TUESDAY	WEDNESDAY	THURSDAY	FRIDAY	SATURDAY	SUNDAY
						1	2
ENERGY						\$1,006.63	(\$7,724.23)
TRANSMISSION SERVICE						(\$2,679.47)	(\$3,050.40)
UPLIFT						(\$0.27)	(\$65.36)
RESIDUALS						(\$1,675.55)	\$1,445.12
ANCILLARY SERVICES						(\$2,771.34)	\$8,477.71
TCC						\$1,780.23	(\$9,741.18)
	3	4	5	6	7	8	9
ENERGY	(\$10,339.36)	(\$4,561.84)	(\$5,045.24)	(\$5,189.39)	(\$5,723.29)	(\$3,092.89)	(\$1,989.06)
TRANSMISSION SERVICE	(\$3,062.45)	(\$2,859.61)	(\$3,347.65)	(\$2,931.93)	(\$2,609.34)	(\$3,569.82)	(\$3,294.54)
UPLIFT	\$166.73	(\$1.69)	\$8.40	(\$0.01)	(\$1.68)	\$58.89	(\$28.04)
RESIDUALS	(\$59.52)	(\$1,538.48)	(\$911.56)	(\$706.78)	(\$412.70)	\$191.31	(\$222.37)
ANCILLARY SERVICES	\$13,698.36	\$21,834.49	\$6,560.14	(\$3,280.96)	(\$7,708.69)	\$1,018.07	(\$3,483.72)
TCC	(\$14,595.18)	(\$22,903.36)	(\$7,837.09)	\$2,174.54	\$6,736.95	(\$2,374.46)	\$2,250.37
	10	11	12	13	14	15	16
ENERGY	(\$11,067.18)	(\$7,532.20)	(\$1,171.34)	\$1,438.82	\$2,150.10	\$2,068.58	\$3,265.96
TRANSMISSION SERVICE	(\$2,954.77)	(\$3,073.97)	(\$3,304.85)	(\$3,302.13)	(\$4,101.14)	(\$3,007.56)	(\$2,783.80)
UPLIFT	\$2.91	(\$55.24)	(\$32.89)	(\$1.19)	\$0.01	\$0.00	(\$1.72)
RESIDUALS	\$2,561.08	\$1,401.46	\$2,728.48	\$1,593.12	\$29.53	\$671.25	\$2,102.15
ANCILLARY SERVICES	(\$8,932.64)	(\$13,674.30)	(\$27,033.79)	(\$26,879.87)	(\$19,974.28)	(\$20,055.44)	(\$7,625.25)
TCC	\$7,791.20	\$11,904.37	\$26,191.38	\$25,888.09	\$18,946.21	\$19,388.11	\$7,364.61
	17	18	19	20	21	22	23
ENERGY	\$2,588.53	\$3,005.24	\$1,976.49	\$6,270.26	(\$8,126.36)	\$16,737.41	\$10,783.43
TRANSMISSION SERVICE	(\$2,585.88)	(\$1,783.10)	(\$2,079.11)	(\$2,050.41)	(\$2,995.95)	\$1,551.42	(\$934.24)
UPLIFT	(\$33.90)	\$66.61	\$23.59	\$50.36	\$15.71	\$0.01	\$0.00
RESIDUALS	\$388.07	\$515.54	(\$212.80)	\$1,283.70	\$2,107.67	\$1,237.95	(\$71.32)
ANCILLARY SERVICES	\$9,759.12	\$6,515.74	\$4,629.11	(\$371.41)	\$1,646.39	(\$7,302.07)	(\$4,500.59)
TCC	(\$10,862.18)	(\$7,120.33)	(\$5,260.54)	(\$35.25)	(\$2,806.61)	\$8,245.72	\$4,294.45
	24	25	26	27	28	29	30
ENERGY	\$11,875.52	\$5,178.48	\$21,787.21	\$16,489.80	(\$29,607.00)	\$653.29	\$4,286.12
TRANSMISSION SERVICE	(\$640.21)	(\$578.64)	\$2,900.39	\$325.86	\$42.29	(\$1,556.64)	(\$1,662.97)
UPLIFT	\$143.83	\$86.98	\$115.40	\$3.03	\$0.00	\$0.00	(\$0.39)
RESIDUALS	(\$955.01)	\$189.52	(\$995.56)	(\$681.38)	\$29,876.00	\$248.95	(\$703.42)
ANCILLARY SERVICES	(\$3,898.66)	(\$15,858.58)	(\$11,672.37)	(\$9,082.48)	\$7,392.28	(\$7,477.24)	(\$11,143.76)
TCC	\$3,739.31	\$15,745.96	\$13,129.23	\$9,384.78	(\$7,229.46)	\$6,938.89	\$10,554.38
	31						
ENERGY	\$17,129.60						
TRANSMISSION SERVICE	(\$565.98)						
UPLIFT	\$31.80						
RESIDUALS	\$420.57						
ANCILLARY SERVICES	(\$8,352.59)						
TCC	\$8,263.42						



SETTLEMENTS REPORT
 October 2022 Settlement Adjustment
 March 7, 2023

Initial Settlement – Market Supply Analysis

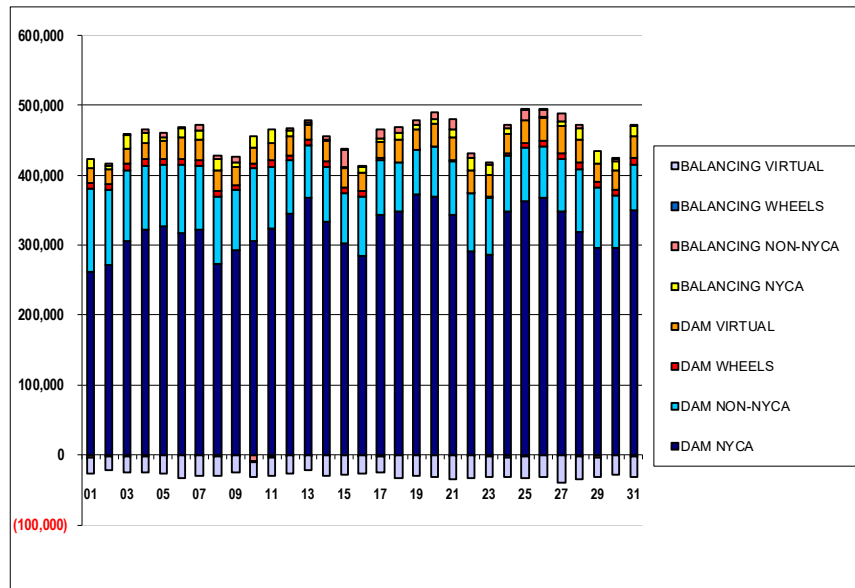
	MONDAY	TUESDAY	WEDNESDAY	THURSDAY	FRIDAY	SATURDAY	SUNDAY
						1	2
DAM NYCA						262,450	271,539
DAM NON-NYCA						117,829	107,458
DAM WHEELS						7,980	8,620
DAM VIRTUAL						22,173	20,921
BALANCING NYCA						13,488	4,526
BALANCING NON-NYCA						(3,599)	2,934
BALANCING WHEELS						(780)	(1,420)
BALANCING VIRTUAL						(22,173)	(20,921)
	3	4	5	6	7	8	9
DAM NYCA	305,980	321,779	327,534	316,708	321,496	273,818	292,985
DAM NON-NYCA	101,056	91,826	87,779	98,890	92,189	95,433	85,725
DAM WHEELS	8,832	9,060	8,261	7,200	8,250	8,687	7,600
DAM VIRTUAL	22,732	23,093	25,936	31,874	29,311	28,592	25,030
BALANCING NYCA	18,815	15,264	4,450	12,529	13,209	17,128	7,269
BALANCING NON-NYCA	136	5,139	6,242	(768)	7,122	5,219	7,842
BALANCING WHEELS	(1,392)	(1,422)	(688)	607	(1,050)	(1,487)	(400)
BALANCING VIRTUAL	(22,732)	(23,093)	(25,936)	(31,874)	(29,311)	(28,592)	(25,030)
	10	11	12	13	14	15	16
DAM NYCA	305,429	324,045	344,489	368,401	334,294	303,260	284,132
DAM NON-NYCA	104,002	88,136	76,411	74,378	77,513	71,670	85,845
DAM WHEELS	7,818	8,618	7,300	7,502	7,622	7,250	7,609
DAM VIRTUAL	22,623	25,487	26,762	21,796	29,811	27,539	25,617
BALANCING NYCA	15,949	19,685	9,571	3,555	811	1,918	8,469
BALANCING NON-NYCA	(8,947)	(2,674)	2,359	3,510	6,332	24,109	2,128
BALANCING WHEELS	(523)	(1,418)	(100)	(229)	(313)	200	(409)
BALANCING VIRTUAL	(22,623)	(25,487)	(26,762)	(21,796)	(29,811)	(27,539)	(25,617)
	17	18	19	20	21	22	23
DAM NYCA	343,401	348,370	372,478	370,159	343,488	291,249	286,139
DAM NON-NYCA	78,366	70,103	62,932	70,801	76,432	82,691	82,059
DAM WHEELS	2,850	0	965	530	1,188	1,160	1,451
DAM VIRTUAL	22,702	32,918	29,059	31,486	33,683	31,866	30,387
BALANCING NYCA	5,565	9,708	7,062	7,731	10,650	15,848	14,541
BALANCING NON-NYCA	12,559	7,388	5,780	9,164	14,500	7,061	2,867
BALANCING WHEELS	(2,550)	0	(730)	(410)	(1,083)	(1,160)	(1,451)
BALANCING VIRTUAL	(22,702)	(32,918)	(29,059)	(31,486)	(33,683)	(31,866)	(30,387)
	24	25	26	27	28	29	30
DAM NYCA	348,366	362,206	368,038	347,952	319,040	296,675	295,843
DAM NON-NYCA	79,436	77,257	73,668	75,837	89,683	86,036	75,803
DAM WHEELS	3,000	7,200	7,265	8,154	9,525	7,650	7,200
DAM VIRTUAL	27,980	31,397	32,171	38,252	32,387	26,923	27,660
BALANCING NYCA	7,973	(1,860)	1,390	6,527	16,631	16,876	13,086
BALANCING NON-NYCA	4,897	14,607	10,192	11,275	3,987	(3,356)	4,238
BALANCING WHEELS	(3,000)	108	287	(500)	(2,125)	(450)	200
BALANCING VIRTUAL	(27,980)	(31,397)	(32,171)	(38,252)	(32,387)	(26,923)	(27,660)
	31						
DAM NYCA	349,086						
DAM NON-NYCA	66,579						
DAM WHEELS	3,411						
DAM VIRTUAL	29,968						
BALANCING NYCA	14,683						
BALANCING NON-NYCA	783						
BALANCING WHEELS	(1,922)						
BALANCING VIRTUAL	(29,968)						



SETTLEMENTS REPORT
October 2022 Settlement Adjustment
March 7, 2023

4-Month Settlement Adjustment – Market Supply Analysis

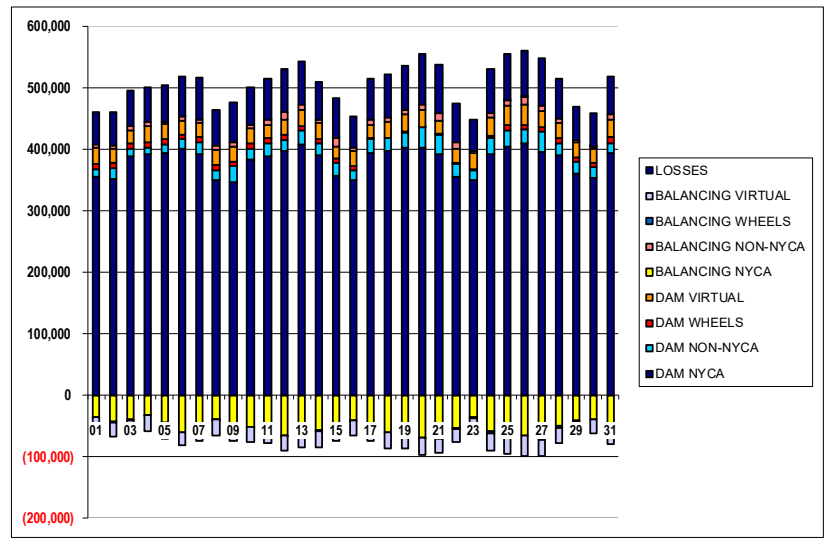
	MONDAY	TUESDAY	WEDNESDAY	THURSDAY	FRIDAY	SATURDAY	SUNDAY
						1	2
DAM NYCA						262,450	271,539
DAM NON-NYCA						117,829	107,458
DAM WHEELS						7,980	8,620
DAM VIRTUAL						22,173	20,921
BALANCING NYCA						13,472	4,491
BALANCING NON-NYCA						(3,599)	2,934
BALANCING WHEELS						(780)	(1,420)
BALANCING VIRTUAL						(22,173)	(20,921)
	3	4	5	6	7	8	9
DAM NYCA	305,980	321,779	327,534	316,708	321,496	273,818	292,985
DAM NON-NYCA	101,056	91,826	87,779	98,890	92,189	95,433	85,725
DAM WHEELS	8,832	9,060	8,261	7,200	8,250	8,687	7,600
DAM VIRTUAL	22,732	23,093	25,936	31,874	29,311	28,592	25,030
BALANCING NYCA	18,713	15,176	4,358	12,448	13,148	17,097	7,235
BALANCING NON-NYCA	136	5,139	6,242	(768)	7,122	5,219	7,842
BALANCING WHEELS	(1,392)	(1,422)	(688)	607	(1,050)	(1,487)	(400)
BALANCING VIRTUAL	(22,732)	(23,093)	(25,936)	(31,874)	(29,311)	(28,592)	(25,030)
	10	11	12	13	14	15	16
DAM NYCA	305,429	324,045	344,489	368,401	334,294	303,260	284,132
DAM NON-NYCA	104,002	88,136	76,411	74,378	77,513	71,670	85,845
DAM WHEELS	7,818	8,618	7,300	7,502	7,622	7,250	7,609
DAM VIRTUAL	22,623	25,487	26,762	21,796	29,811	27,539	25,617
BALANCING NYCA	15,853	19,616	9,631	3,632	860	2,013	8,616
BALANCING NON-NYCA	(8,947)	(2,674)	2,359	3,510	6,332	24,109	2,128
BALANCING WHEELS	(523)	(1,418)	(100)	(229)	(313)	200	(409)
BALANCING VIRTUAL	(22,623)	(25,487)	(26,762)	(21,796)	(29,811)	(27,539)	(25,617)
	17	18	19	20	21	22	23
DAM NYCA	343,401	348,370	372,478	370,159	343,488	291,249	286,139
DAM NON-NYCA	78,366	70,103	62,932	70,801	76,432	82,691	82,059
DAM WHEELS	2,850	0	965	530	1,188	1,160	1,451
DAM VIRTUAL	22,702	32,918	29,059	31,486	33,683	31,866	30,387
BALANCING NYCA	5,638	9,788	7,103	7,922	10,457	17,060	14,994
BALANCING NON-NYCA	12,559	7,388	5,780	9,164	14,500	7,061	2,867
BALANCING WHEELS	(2,550)	0	(730)	(410)	(1,083)	(1,160)	(1,451)
BALANCING VIRTUAL	(22,702)	(32,918)	(29,059)	(31,486)	(33,683)	(31,866)	(30,387)
	24	25	26	27	28	29	30
DAM NYCA	348,366	362,206	368,038	347,952	319,040	296,675	295,843
DAM NON-NYCA	79,436	77,257	73,668	75,837	89,683	86,036	75,803
DAM WHEELS	3,000	7,200	7,265	8,154	9,525	7,650	7,200
DAM VIRTUAL	27,980	31,397	32,171	38,252	32,387	26,923	27,660
BALANCING NYCA	8,261	(1,516)	2,691	7,167	17,190	17,008	13,217
BALANCING NON-NYCA	4,897	14,607	10,192	11,275	3,987	(3,356)	4,238
BALANCING WHEELS	(3,000)	108	287	(500)	(2,125)	(450)	200
BALANCING VIRTUAL	(27,980)	(31,397)	(32,171)	(38,252)	(32,387)	(26,923)	(27,660)
	31						
DAM NYCA	349,086						
DAM NON-NYCA	66,579						
DAM WHEELS	9,411						
DAM VIRTUAL	29,968						
BALANCING NYCA	15,100						
BALANCING NON-NYCA	783						
BALANCING WHEELS	(1,922)						
BALANCING VIRTUAL	(29,968)						



SETTLEMENTS REPORT
 October 2022 Settlement Adjustment
 March 7, 2023

Initial Settlement – Market Withdrawals Analysis

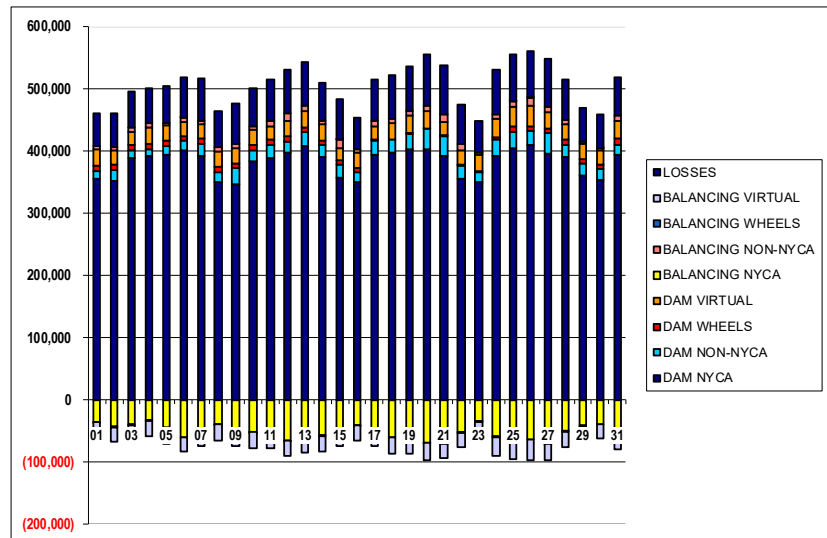
	MONDAY	TUESDAY	WEDNESDAY	THURSDAY	FRIDAY	SATURDAY	SUNDAY
						1	2
DAM NYCA						354,275	352,347
DAM NON-NYCA						13,063	17,302
DAM WHEELS						7,980	8,620
DAM VIRTUAL						27,359	23,179
BALANCING NYCA						(35,629)	(42,869)
BALANCING NON-NYCA						5,462	4,996
BALANCING WHEELS						(780)	(1,420)
BALANCING VIRTUAL						(27,359)	(23,179)
UFE/LOSSES						52,997	54,681
	3	4	5	6	7	8	9
DAM NYCA	389,181	392,598	393,985	401,318	391,951	349,873	347,047
DAM NON-NYCA	11,928	9,963	13,897	14,997	19,359	15,983	24,903
DAM WHEELS	8,832	9,060	8,261	7,200	8,250	8,687	7,600
DAM VIRTUAL	21,225	26,165	24,632	22,675	22,763	25,063	24,828
BALANCING NYCA	(38,865)	(31,700)	(45,239)	(59,562)	(50,929)	(38,572)	(49,287)
BALANCING NON-NYCA	5,940	6,270	4,190	7,115	6,411	6,477	7,425
BALANCING WHEELS	(1,392)	(1,422)	(688)	607	(1,050)	(1,487)	(400)
BALANCING VIRTUAL	(21,225)	(26,165)	(24,632)	(22,675)	(22,763)	(25,063)	(24,828)
UFE/LOSSES	57,805	56,878	59,172	63,490	67,225	57,836	63,733
	10	11	12	13	14	15	16
DAM NYCA	382,433	388,988	396,354	406,949	389,956	356,271	349,748
DAM NON-NYCA	18,528	20,254	19,048	22,887	18,818	21,066	15,962
DAM WHEELS	7,818	8,618	7,300	7,502	7,622	7,250	7,609
DAM VIRTUAL	24,953	21,427	25,349	27,233	26,017	19,723	24,134
BALANCING NYCA	(51,455)	(55,510)	(65,474)	(58,022)	(57,702)	(55,493)	(41,245)
BALANCING NON-NYCA	6,420	9,091	12,293	8,093	5,620	13,941	5,033
BALANCING WHEELS	(523)	(1,418)	(100)	(229)	(313)	200	(409)
BALANCING VIRTUAL	(24,953)	(21,427)	(25,349)	(27,233)	(26,017)	(19,723)	(24,134)
UFE/LOSSES	60,508	66,369	70,610	69,937	62,258	65,172	51,076
	17	18	19	20	21	22	23
DAM NYCA	392,848	396,513	402,266	402,138	392,113	355,470	349,709
DAM NON-NYCA	23,088	22,380	25,627	33,476	31,205	21,050	16,030
DAM WHEELS	2,850	0	965	530	1,188	1,160	1,451
DAM VIRTUAL	21,320	25,260	28,150	27,948	22,185	22,398	26,242
BALANCING NYCA	(50,868)	(60,892)	(58,536)	(69,427)	(69,536)	(53,102)	(35,236)
BALANCING NON-NYCA	7,110	7,699	6,399	9,092	12,070	10,937	4,411
BALANCING WHEELS	(2,550)	0	(730)	(410)	(1,083)	(1,160)	(1,451)
BALANCING VIRTUAL	(21,320)	(25,260)	(28,150)	(27,948)	(22,185)	(22,398)	(26,242)
UFE/LOSSES	67,713	69,868	72,496	82,575	79,218	62,495	50,691
	24	25	26	27	28	29	30
DAM NYCA	391,911	404,826	410,236	395,937	390,735	360,803	353,838
DAM NON-NYCA	26,712	26,514	22,110	32,284	18,377	18,193	16,960
DAM WHEELS	3,000	7,200	7,265	8,154	9,525	7,650	7,200
DAM VIRTUAL	29,252	31,956	33,785	26,030	24,606	23,962	22,359
BALANCING NYCA	(58,280)	(63,731)	(64,941)	(71,716)	(50,657)	(41,872)	(39,382)
BALANCING NON-NYCA	7,408	9,883	12,237	9,195	6,939	4,186	4,538
BALANCING WHEELS	(3,000)	108	287	(500)	(2,125)	(450)	200
BALANCING VIRTUAL	(29,252)	(31,956)	(33,785)	(26,030)	(24,606)	(23,962)	(22,359)
UFE/LOSSES	72,922	74,718	73,647	75,891	63,948	54,921	53,017
	31						
DAM NYCA	393,997						
DAM NON-NYCA	16,352						
DAM WHEELS	9,411						
DAM VIRTUAL	28,082						
BALANCING NYCA	(49,716)						
BALANCING NON-NYCA	8,958						
BALANCING WHEELS	(1,922)						
BALANCING VIRTUAL	(28,082)						
UFE/LOSSES	61,540						



SETTLEMENTS REPORT
 October 2022 Settlement Adjustment
 March 7, 2023

4-Month Settlement Adjustment – Market Withdrawals Analysis

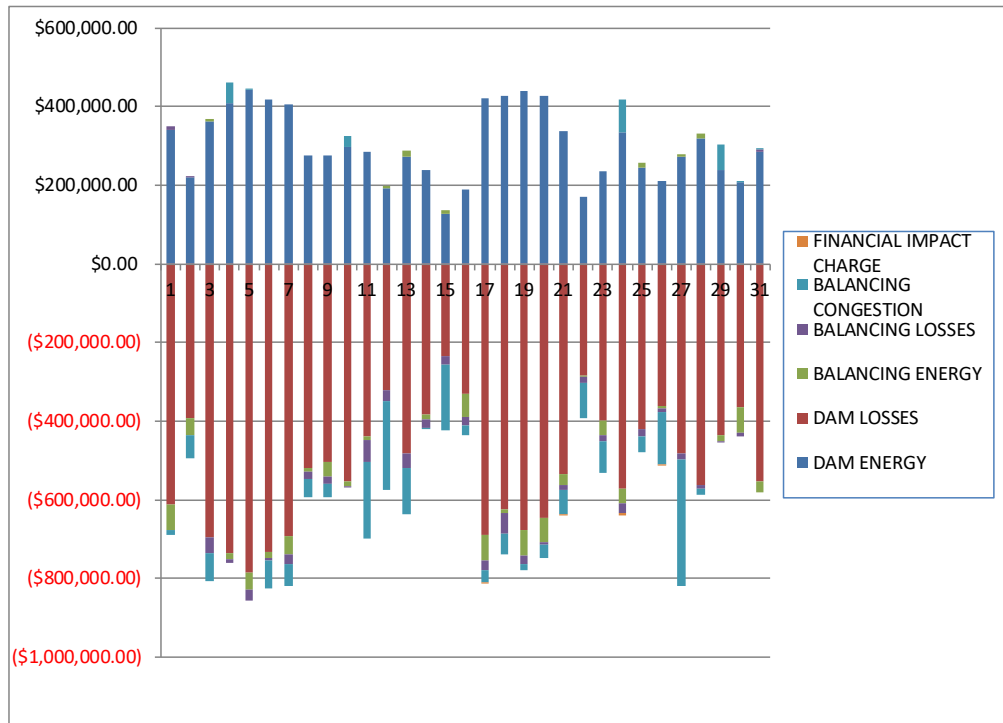
	MONDAY	TUESDAY	WEDNESDAY	THURSDAY	FRIDAY	SATURDAY	SUNDAY
						1	2
DAM NYCA						354,275	352,347
DAM NON-NYCA						13,063	17,302
DAM WHEELS						7,980	8,620
DAM VIRTUAL						27,359	23,179
BALANCING NYCA						(35,596)	(42,914)
BALANCING NON-NYCA						5,462	4,996
BALANCING WHEELS						(780)	(1,420)
BALANCING VIRTUAL						(27,359)	(23,179)
UFE/LOSSES						52,948	54,691
	3	4	5	6	7	8	9
DAM NYCA	389,181	392,598	393,985	401,318	391,951	349,873	347,047
DAM NON-NYCA	11,928	9,963	13,897	14,997	19,359	15,983	24,903
DAM WHEELS	8,832	9,060	8,261	7,200	8,250	8,687	7,600
DAM VIRTUAL	21,225	26,165	24,632	22,675	22,763	25,063	24,828
BALANCING NYCA	(38,958)	(31,767)	(45,316)	(59,638)	(50,978)	(38,604)	(49,302)
BALANCING NON-NYCA	5,940	6,270	4,190	7,115	6,411	6,477	7,425
BALANCING WHEELS	(1,392)	(1,422)	(688)	607	(1,050)	(1,487)	(400)
BALANCING VIRTUAL	(21,225)	(26,165)	(24,632)	(22,675)	(22,763)	(25,063)	(24,828)
UFE/LOSSES	57,795	56,856	59,158	63,486	67,212	57,837	63,714
	10	11	12	13	14	15	16
DAM NYCA	382,433	388,988	396,354	406,949	389,956	356,271	349,748
DAM NON-NYCA	18,528	20,254	19,048	22,887	18,818	21,066	15,962
DAM WHEELS	7,818	8,618	7,300	7,502	7,622	7,250	7,609
DAM VIRTUAL	24,953	21,427	25,349	27,233	26,017	19,723	24,134
BALANCING NYCA	(51,556)	(55,597)	(65,463)	(57,995)	(57,649)	(55,399)	(41,137)
BALANCING NON-NYCA	6,420	9,091	12,293	8,093	5,620	13,941	5,033
BALANCING WHEELS	(523)	(1,418)	(100)	(229)	(313)	200	(409)
BALANCING VIRTUAL	(24,953)	(21,427)	(25,349)	(27,233)	(26,017)	(19,723)	(24,134)
UFE/LOSSES	60,512	66,388	70,658	69,988	62,255	65,173	51,115
	17	18	19	20	21	22	23
DAM NYCA	392,848	396,513	402,266	402,138	392,113	355,470	349,709
DAM NON-NYCA	23,088	22,380	25,627	33,476	31,205	21,050	16,030
DAM WHEELS	2,850	0	965	530	1,188	1,160	1,451
DAM VIRTUAL	21,320	25,260	28,150	27,948	22,185	22,398	26,242
BALANCING NYCA	(50,814)	(60,820)	(58,495)	(69,284)	(69,738)	(51,867)	(34,761)
BALANCING NON-NYCA	7,110	7,699	6,399	9,092	12,070	10,937	4,411
BALANCING WHEELS	(2,550)	0	(730)	(410)	(1,083)	(1,160)	(1,451)
BALANCING VIRTUAL	(21,320)	(25,260)	(28,150)	(27,948)	(22,185)	(22,398)	(26,242)
UFE/LOSSES	67,732	69,876	72,496	82,623	79,227	62,472	50,669
	24	25	26	27	28	29	30
DAM NYCA	391,911	404,826	410,236	395,937	390,735	360,803	353,838
DAM NON-NYCA	26,712	26,514	22,110	32,284	32,377	18,193	16,960
DAM WHEELS	3,000	7,200	7,265	8,154	9,525	7,650	7,200
DAM VIRTUAL	29,252	31,956	33,785	26,030	24,606	23,962	22,359
BALANCING NYCA	(57,982)	(63,382)	(63,637)	(71,076)	(50,091)	(41,723)	(39,041)
BALANCING NON-NYCA	7,408	9,883	12,237	9,195	6,939	4,186	4,538
BALANCING WHEELS	(3,000)	108	287	(500)	(2,125)	(450)	200
BALANCING VIRTUAL	(29,252)	(31,956)	(33,785)	(26,030)	(24,606)	(23,962)	(22,359)
UFE/LOSSES	72,912	74,712	73,643	75,891	63,940	54,904	52,807
	31						
DAM NYCA	393,997						
DAM NON-NYCA	16,352						
DAM WHEELS	9,411						
DAM VIRTUAL	28,082						
BALANCING NYCA	(49,102)						
BALANCING NON-NYCA	8,958						
BALANCING WHEELS	(1,922)						
BALANCING VIRTUAL	(28,082)						
UFE/LOSSES	61,343						



SETTLEMENTS REPORT
October 2022 Settlement Adjustment
March 7, 2023

Initial Settlement – Market Residuals Analysis

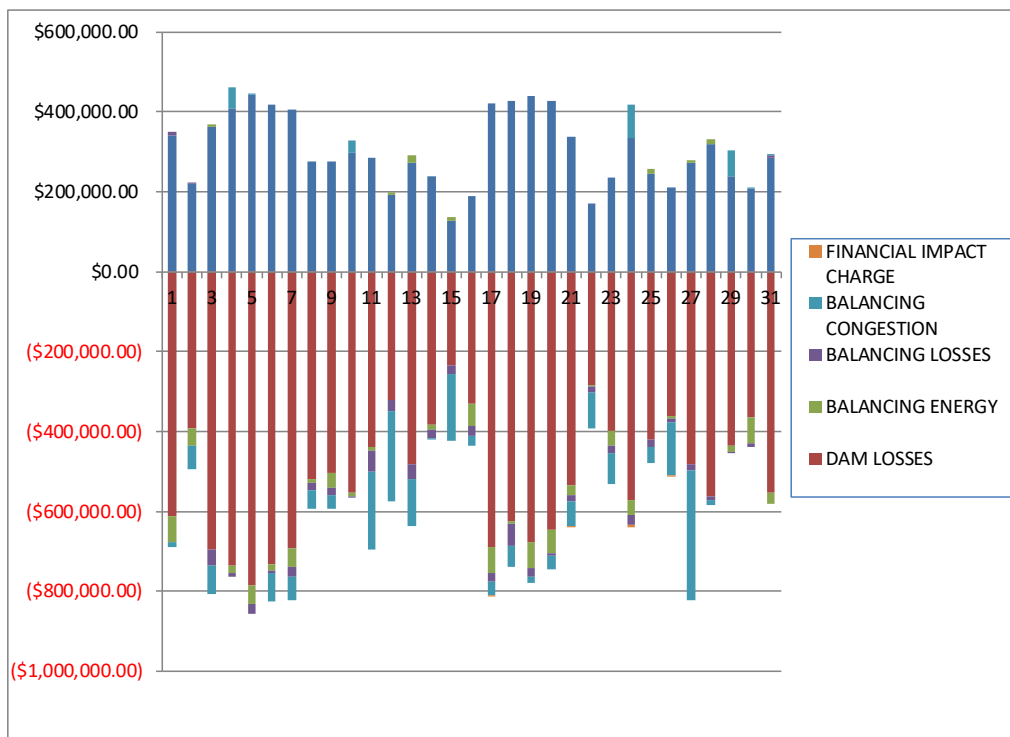
	MONDAY	TUESDAY	WEDNESDAY	THURSDAY	FRIDAY	SATURDAY	SUNDAY
						1	2
DAM ENERGY						\$340,550.56	\$218,875.77
DAM LOSSES						(\$612,493.88)	(\$391,316.95)
BALANCING ENERGY						(\$62,912.36)	(\$43,967.19)
BALANCING LOSSES						\$8,863.78	\$5,119.07
BALANCING CONGESTION						(\$13,595.08)	(\$59,514.60)
FINANCIAL IMPACT CHARGE						\$0.00	\$0.00
	3	4	5	6	7	8	9
DAM ENERGY	\$360,776.76	\$407,831.33	\$442,164.23	\$417,208.97	\$406,140.92	\$275,537.75	\$275,746.08
DAM LOSSES	(\$696,295.14)	(\$736,928.17)	(\$784,416.47)	(\$733,487.12)	(\$693,107.41)	(\$517,696.75)	(\$503,172.20)
BALANCING ENERGY	\$8,966.59	(\$14,575.71)	(\$45,274.08)	(\$15,479.40)	(\$44,342.06)	(\$11,940.83)	(\$37,662.22)
BALANCING LOSSES	(\$40,119.33)	(\$10,112.26)	(\$25,408.66)	(\$3,957.74)	(\$26,757.13)	(\$17,335.57)	(\$18,344.15)
BALANCING CONGESTION	(\$69,202.09)	\$53,877.61	\$342.28	(\$70,971.53)	(\$56,315.70)	(\$46,844.15)	(\$33,138.22)
FINANCIAL IMPACT CHARGE	\$0.00	\$0.00	\$0.00	\$0.00	\$0.00	\$0.00	\$0.00
	10	11	12	13	14	15	16
DAM ENERGY	\$298,465.58	\$284,154.00	\$192,783.01	\$272,557.09	\$238,458.59	\$127,862.14	\$188,074.19
DAM LOSSES	(\$552,609.80)	(\$439,897.09)	(\$322,056.73)	(\$482,862.23)	(\$382,108.39)	(\$234,378.18)	(\$331,382.73)
BALANCING ENERGY	(\$11,598.47)	(\$8,371.27)	\$4,047.48	\$15,325.88	(\$13,653.97)	\$8,553.70	(\$57,837.36)
BALANCING LOSSES	(\$743.82)	(\$54,955.66)	(\$25,734.12)	(\$35,516.64)	(\$21,259.68)	(\$20,395.87)	(\$22,564.64)
BALANCING CONGESTION	\$26,523.19	(\$194,880.61)	(\$227,683.64)	(\$118,618.16)	(\$2,217.33)	(\$167,934.42)	(\$24,443.46)
FINANCIAL IMPACT CHARGE	\$0.00	\$0.00	\$0.00	\$0.00	\$0.00	\$0.00	\$0.00
	17	18	19	20	21	22	23
DAM ENERGY	\$420,353.74	\$426,203.63	\$437,820.52	\$426,000.50	\$338,312.31	\$169,101.22	\$234,245.95
DAM LOSSES	(\$689,539.99)	(\$625,252.77)	(\$676,883.35)	(\$647,275.26)	(\$534,015.00)	(\$284,792.86)	(\$398,395.41)
BALANCING ENERGY	(\$64,051.13)	(\$6,989.57)	(\$65,292.38)	(\$59,641.57)	(\$27,090.80)	(\$3,031.35)	(\$37,766.08)
BALANCING LOSSES	(\$23,803.82)	(\$55,203.87)	(\$22,191.23)	(\$7,291.78)	(\$14,544.79)	(\$15,365.16)	(\$15,914.46)
BALANCING CONGESTION	(\$31,707.21)	(\$52,315.38)	(\$15,341.23)	(\$33,382.60)	(\$62,139.49)	(\$90,310.11)	(\$78,741.41)
FINANCIAL IMPACT CHARGE	(\$148.96)	\$0.00	\$0.00	\$0.00	(\$210.91)	\$0.00	\$0.00
	24	25	26	27	28	29	30
DAM ENERGY	\$333,738.08	\$245,105.93	\$210,609.01	\$273,227.41	\$319,718.65	\$239,660.72	\$206,324.36
DAM LOSSES	(\$572,915.28)	(\$420,083.51)	(\$360,167.29)	(\$482,028.37)	(\$562,238.51)	(\$435,183.25)	(\$364,290.11)
BALANCING ENERGY	(\$34,722.24)	\$12,456.31	(\$6,269.88)	\$5,999.51	\$11,575.23	(\$15,569.69)	(\$65,524.52)
BALANCING LOSSES	(\$25,569.49)	(\$18,390.87)	(\$10,996.85)	(\$14,379.30)	(\$7,909.60)	(\$642.43)	(\$7,928.10)
BALANCING CONGESTION	\$83,225.01	(\$41,308.27)	(\$131,710.28)	(\$323,783.37)	(\$15,674.17)	\$62,875.73	\$3,121.18
FINANCIAL IMPACT CHARGE	(\$5,739.51)	\$0.00	(\$2,709.06)	\$0.00	\$0.00	\$0.00	\$0.00
	31						
DAM ENERGY	\$286,149.32						
DAM LOSSES	(\$551,765.12)						
BALANCING ENERGY	(\$28,459.54)						
BALANCING LOSSES	\$4,004.35						
BALANCING CONGESTION	\$4,997.78						
FINANCIAL IMPACT CHARGE	\$0.00						



SETTLEMENTS REPORT
October 2022 Settlement Adjustment
March 7, 2023

4-Month Settlement Adjustment – Market Residuals Analysis

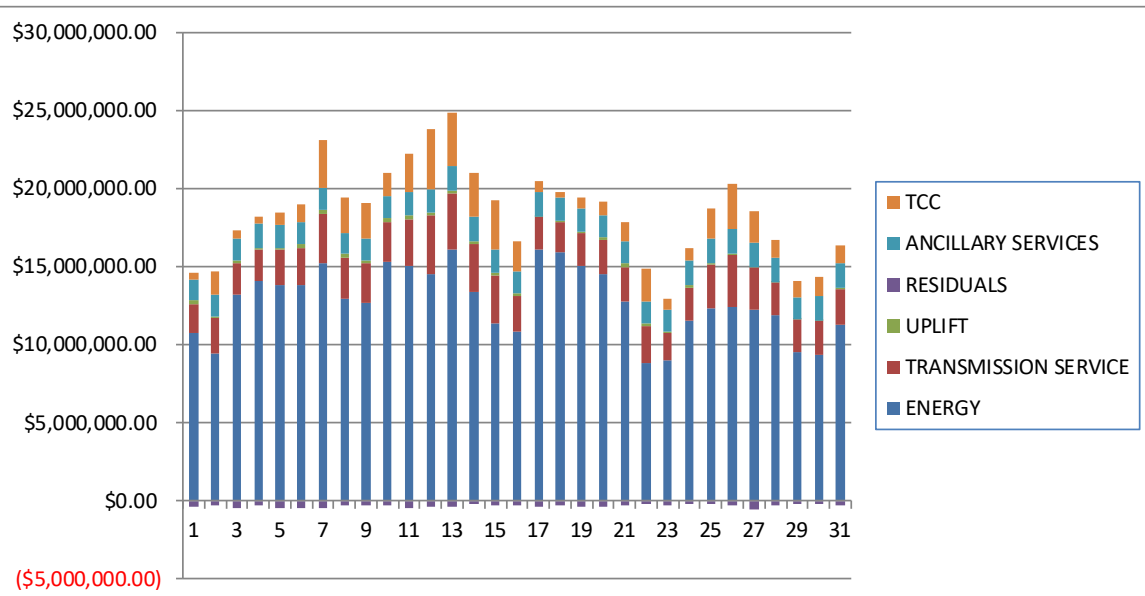
	MONDAY	TUESDAY	WEDNESDAY	THURSDAY	FRIDAY	SATURDAY	SUNDAY
						1	2
DAM ENERGY						\$340,550.56	\$218,875.78
DAM LOSSES						(\$612,493.88)	(\$391,316.96)
BALANCING ENERGY						(\$64,474.80)	(\$43,684.69)
BALANCING LOSSES						\$8,694.89	\$5,179.66
BALANCING CONGESTION						(\$13,539.30)	(\$58,412.57)
FINANCIAL IMPACT CHARGE						\$0.00	\$0.00
	3	4	5	6	7	8	9
DAM ENERGY	\$360,776.76	\$407,831.33	\$442,164.23	\$417,208.97	\$406,140.92	\$275,537.75	\$275,746.09
DAM LOSSES	(\$696,295.13)	(\$736,928.17)	(\$784,416.46)	(\$733,487.13)	(\$693,107.41)	(\$517,696.75)	(\$503,172.20)
BALANCING ENERGY	\$8,534.41	(\$15,882.29)	(\$45,848.30)	(\$15,313.98)	(\$44,588.78)	(\$11,677.66)	(\$38,025.32)
BALANCING LOSSES	(\$40,228.69)	(\$10,288.58)	(\$25,642.64)	(\$4,147.00)	(\$26,922.35)	(\$17,458.07)	(\$18,507.08)
BALANCING CONGESTION	(\$68,720.08)	\$53,822.03	\$238.91	(\$71,654.46)	(\$56,316.46)	(\$46,793.51)	(\$32,834.57)
FINANCIAL IMPACT CHARGE	\$0.00	\$0.00	\$0.00	\$0.00	\$0.00	\$0.00	\$0.00
	10	11	12	13	14	15	16
DAM ENERGY	\$298,465.58	\$284,153.99	\$192,783.02	\$272,557.09	\$238,458.58	\$127,862.15	\$188,074.19
DAM LOSSES	(\$552,609.79)	(\$439,897.10)	(\$322,056.73)	(\$482,862.23)	(\$382,108.40)	(\$234,378.19)	(\$331,382.72)
BALANCING ENERGY	(\$10,951.41)	(\$7,018.17)	\$5,990.35	\$17,282.46	(\$13,492.57)	\$8,698.87	(\$55,755.67)
BALANCING LOSSES	(\$749.55)	(\$55,097.41)	(\$25,925.06)	(\$35,665.52)	(\$21,454.17)	(\$20,508.54)	(\$22,695.86)
BALANCING CONGESTION	\$28,442.93	(\$194,690.48)	(\$226,707.10)	(\$118,832.74)	(\$2,154.69)	(\$167,295.67)	(\$24,291.79)
FINANCIAL IMPACT CHARGE	\$0.00	\$0.00	\$0.00	\$0.00	\$0.00	\$0.00	\$0.00
	17	18	19	20	21	22	23
DAM ENERGY	\$420,353.74	\$426,203.62	\$437,820.52	\$426,000.50	\$338,312.31	\$169,101.21	\$234,245.95
DAM LOSSES	(\$689,539.98)	(\$625,252.76)	(\$676,883.36)	(\$647,275.26)	(\$534,014.99)	(\$284,792.86)	(\$398,395.41)
BALANCING ENERGY	(\$63,323.91)	(\$6,403.10)	(\$65,257.14)	(\$57,116.86)	(\$26,011.80)	(\$3,213.59)	(\$38,098.32)
BALANCING LOSSES	(\$23,909.27)	(\$55,386.48)	(\$22,387.59)	(\$6,669.64)	(\$14,418.21)	(\$15,647.80)	(\$16,160.09)
BALANCING CONGESTION	(\$31,941.00)	(\$52,203.70)	(\$15,392.90)	(\$35,245.75)	(\$61,237.32)	(\$88,607.27)	(\$78,234.86)
FINANCIAL IMPACT CHARGE	(\$148.88)	\$0.00	\$0.00	\$0.00	(\$211.00)	\$0.00	\$0.00
	24	25	26	27	28	29	30
DAM ENERGY	\$333,738.09	\$245,105.93	\$210,609.01	\$273,227.40	\$319,718.66	\$239,660.71	\$206,324.36
DAM LOSSES	(\$572,915.27)	(\$420,083.51)	(\$360,167.29)	(\$482,028.37)	(\$562,238.51)	(\$435,183.26)	(\$364,290.11)
BALANCING ENERGY	(\$35,491.19)	\$12,323.20	(\$6,569.78)	\$6,226.19	\$11,552.72	(\$15,884.73)	(\$66,246.70)
BALANCING LOSSES	(\$25,854.36)	(\$18,550.30)	(\$11,028.97)	(\$14,158.98)	(\$7,900.24)	(\$7,12.22)	(\$7,974.95)
BALANCING CONGESTION	\$83,323.86	(\$40,826.21)	(\$132,373.78)	(\$324,911.74)	(\$15,317.10)	\$63,509.53	\$3,186.79
FINANCIAL IMPACT CHARGE	(\$5,739.57)	\$0.00	(\$2,709.10)	\$0.00	\$0.00	\$0.00	\$0.00
	31						
DAM ENERGY	\$286,149.32						
DAM LOSSES	(\$551,765.12)						
BALANCING ENERGY	(\$28,393.27)						
BALANCING LOSSES	\$4,254.53						
BALANCING CONGESTION	\$5,101.90						
FINANCIAL IMPACT CHARGE	\$0.00						



SETTLEMENTS REPORT
October 2022 Settlement Adjustment
March 7, 2023

Initial Settlement – Market Costs Analysis

	MONDAY	TUESDAY	WEDNESDAY	THURSDAY	FRIDAY	SATURDAY	SUNDAY
ENERGY						1	2
TRANSMISSION SERVICE						\$10,793,406.45	\$9,421,819.12
UPLIFT						\$1,831,519.90	\$2,258,394.79
RESIDUALS						\$192,521.05	\$140,524.94
ANCILLARY SERVICES						(\$339,586.98)	(\$270,803.90)
TCC						\$1,351,597.45	\$1,360,161.16
						\$450,680.63	\$1,547,425.65
	3	4	5	6	7	8	9
ENERGY	\$13,198,734.29	\$14,087,058.15	\$13,802,110.99	\$13,856,140.79	\$15,205,650.75	\$12,928,627.26	\$12,684,079.93
TRANSMISSION SERVICE	\$1,983,111.38	\$1,965,807.48	\$2,243,260.79	\$2,354,467.39	\$3,128,672.28	\$2,670,738.61	\$2,520,853.20
UPLIFT	\$194,307.10	\$159,716.64	\$145,339.51	\$209,032.77	\$270,560.07	\$188,528.94	\$165,675.30
RESIDUALS	(\$435,873.21)	(\$299,907.20)	(\$412,592.70)	(\$406,686.82)	(\$414,381.38)	(\$318,279.55)	(\$316,570.71)
ANCILLARY SERVICES	\$1,415,423.12	\$1,507,065.69	\$1,440,614.82	\$1,445,508.83	\$1,460,496.59	\$1,379,862.87	\$1,388,576.92
TCC	\$531,067.41	\$461,327.11	\$838,336.99	\$1,089,416.00	\$3,034,567.34	\$2,225,597.04	\$2,269,202.41
	10	11	12	13	14	15	16
ENERGY	\$15,314,087.36	\$15,017,562.13	\$14,481,064.26	\$16,126,908.80	\$13,348,093.67	\$11,390,620.19	\$10,796,235.81
TRANSMISSION SERVICE	\$2,513,560.77	\$3,033,271.39	\$3,813,144.63	\$3,570,218.38	\$3,121,371.26	\$3,042,580.20	\$2,308,187.06
UPLIFT	\$232,827.58	\$260,442.55	\$168,268.25	\$139,298.19	\$179,987.72	\$163,632.25	\$183,039.47
RESIDUALS	(\$239,963.32)	(\$413,950.63)	(\$378,644.00)	(\$349,114.06)	(\$180,780.78)	(\$286,292.63)	(\$248,154.00)
ANCILLARY SERVICES	\$1,455,442.05	\$1,420,792.28	\$1,515,034.37	\$1,567,268.53	\$1,497,075.40	\$1,495,670.55	\$1,380,220.15
TCC	\$1,512,721.52	\$2,461,362.36	\$3,817,197.85	\$3,450,737.75	\$2,806,303.38	\$3,154,215.07	\$1,953,777.10
	17	18	19	20	21	22	23
ENERGY	\$16,105,870.62	\$15,894,168.27	\$15,002,494.11	\$14,553,593.44	\$12,749,239.21	\$8,789,752.93	\$9,023,065.55
TRANSMISSION SERVICE	\$2,045,681.34	\$1,927,317.24	\$2,144,500.30	\$2,164,803.45	\$2,240,536.60	\$2,398,768.25	\$1,769,239.48
UPLIFT	\$41,093.81	\$61,200.80	\$75,274.75	\$117,309.56	\$181,594.41	\$165,147.49	\$84,800.17
RESIDUALS	(\$388,897.37)	(\$313,557.96)	(\$341,887.67)	(\$321,590.71)	(\$299,688.68)	(\$224,398.26)	(\$296,571.41)
ANCILLARY SERVICES	\$1,557,699.98	\$1,522,612.10	\$1,452,952.63	\$1,441,744.91	\$1,455,627.67	\$1,400,239.76	\$1,395,490.04
TCC	\$696,354.72	\$328,336.93	\$767,166.70	\$867,483.94	\$1,188,155.15	\$2,098,445.92	\$680,311.03
	24	25	26	27	28	29	30
ENERGY	\$11,539,022.71	\$12,291,358.70	\$12,416,441.27	\$12,275,561.90	\$11,849,857.37	\$9,512,083.06	\$9,371,089.51
TRANSMISSION SERVICE	\$2,106,266.30	\$2,793,344.39	\$3,293,552.58	\$2,661,407.30	\$2,099,782.31	\$2,098,603.55	\$2,175,859.83
UPLIFT	\$174,264.48	\$148,028.48	\$94,606.52	\$12,214.50	\$73,062.95	\$56,365.01	\$25,946.84
RESIDUALS	(\$221,983.43)	(\$222,220.41)	(\$301,244.35)	(\$540,964.12)	(\$254,528.40)	(\$148,858.92)	(\$228,297.19)
ANCILLARY SERVICES	\$1,527,693.41	\$1,560,704.28	\$1,610,588.23	\$1,587,724.62	\$1,545,410.19	\$1,400,432.21	\$1,562,212.83
TCC	\$801,749.11	\$1,900,752.99	\$2,911,272.65	\$2,014,731.99	\$1,154,219.35	\$995,816.37	\$1,239,577.64
	31						
ENERGY	\$11,249,205.07						
TRANSMISSION SERVICE	\$2,325,465.67						
UPLIFT	\$49,675.91						
RESIDUALS	(\$285,073.21)						
ANCILLARY SERVICES	\$1,603,236.63						
TCC	\$1,086,946.82						



SETTLEMENTS REPORT
 October 2022 Settlement Adjustment
 March 7, 2023

4-Month Settlement Adjustment – Market Costs Analysis

	MONDAY	TUESDAY	WEDNESDAY	THURSDAY	FRIDAY	SATURDAY	SUNDAY
						1	2
ENERGY						\$10,794,413.08	\$9,414,094.89
TRANSMISSION SERVICE						\$1,828,840.43	\$2,255,344.39
UPLIFT						\$192,520.78	\$140,459.58
RESIDUALS						(\$341,262.53)	(\$269,358.78)
ANCILLARY SERVICES						\$1,348,826.11	\$1,368,638.87
TCC						\$452,460.86	\$1,537,684.47
	3	4	5	6	7	8	9
ENERGY	\$13,188,394.93	\$14,082,496.31	\$13,797,065.75	\$13,850,951.40	\$15,199,927.46	\$12,925,534.37	\$12,682,090.87
TRANSMISSION SERVICE	\$1,980,048.93	\$1,962,947.87	\$2,239,913.14	\$2,351,535.46	\$3,126,062.94	\$2,667,168.79	\$2,517,558.66
UPLIFT	\$194,473.83	\$159,714.95	\$145,347.91	\$209,032.76	\$270,558.39	\$188,587.83	\$165,647.26
RESIDUALS	(\$435,932.73)	(\$301,445.68)	(\$413,504.26)	(\$407,393.60)	(\$414,794.08)	(\$318,088.24)	(\$316,793.08)
ANCILLARY SERVICES	\$1,429,121.48	\$1,528,900.18	\$1,447,174.96	\$1,442,227.87	\$1,452,787.90	\$1,380,880.94	\$1,385,093.20
TCC	\$516,472.23	\$438,423.75	\$830,499.90	\$1,091,590.54	\$3,041,304.29	\$2,223,222.58	\$2,271,452.78
	10	11	12	13	14	15	16
ENERGY	\$15,303,020.18	\$15,010,029.93	\$14,479,892.92	\$16,128,347.62	\$13,350,243.77	\$11,392,688.77	\$10,799,501.77
TRANSMISSION SERVICE	\$2,510,606.00	\$3,030,197.42	\$3,809,839.78	\$3,566,916.25	\$3,117,270.12	\$3,039,572.64	\$2,305,403.26
UPLIFT	\$232,830.49	\$260,387.31	\$168,235.36	\$139,297.00	\$179,987.73	\$163,632.25	\$183,037.75
RESIDUALS	(\$237,402.24)	(\$412,549.17)	(\$375,915.52)	(\$347,520.94)	(\$180,751.25)	(\$285,621.38)	(\$246,051.85)
ANCILLARY SERVICES	\$1,446,509.41	\$1,407,117.98	\$1,488,000.58	\$1,540,388.66	\$1,477,101.12	\$1,475,615.11	\$1,372,594.90
TCC	\$1,520,512.72	\$2,473,266.73	\$3,843,389.23	\$3,476,625.84	\$2,825,249.59	\$3,173,603.18	\$1,961,141.71
	17	18	19	20	21	22	23
ENERGY	\$16,108,459.15	\$15,897,173.51	\$15,004,470.60	\$14,559,863.70	\$12,741,112.85	\$8,806,490.34	\$9,033,848.98
TRANSMISSION SERVICE	\$2,043,095.46	\$1,925,534.14	\$2,142,421.19	\$2,162,753.04	\$2,237,540.65	\$2,400,319.67	\$1,768,305.24
UPLIFT	\$41,059.91	\$61,267.41	\$75,298.34	\$117,359.92	\$181,610.12	\$165,147.50	\$84,800.17
RESIDUALS	(\$388,509.30)	(\$313,042.42)	(\$342,100.47)	(\$320,307.01)	(\$297,581.01)	(\$223,160.31)	(\$296,642.73)
ANCILLARY SERVICES	\$1,567,459.10	\$1,529,127.84	\$1,457,581.74	\$1,441,373.50	\$1,457,274.06	\$1,392,937.69	\$1,390,989.45
TCC	\$685,492.54	\$321,216.60	\$761,906.16	\$867,448.69	\$1,185,348.54	\$2,106,691.64	\$684,605.48
	24	25	26	27	28	29	30
ENERGY	\$11,550,898.23	\$12,296,537.18	\$12,438,228.48	\$12,292,051.70	\$11,867,688.83	\$9,512,736.35	\$9,375,375.63
TRANSMISSION SERVICE	\$2,105,626.09	\$2,792,765.75	\$3,296,452.97	\$2,661,733.16	\$2,099,824.60	\$2,097,046.91	\$2,174,196.86
UPLIFT	\$174,408.31	\$148,115.46	\$94,721.92	\$12,217.53	\$73,062.95	\$56,365.01	\$25,946.45
RESIDUALS	(\$222,938.44)	(\$222,030.89)	(\$302,239.91)	(\$541,645.50)	(\$254,184.47)	(\$148,609.97)	(\$229,000.61)
ANCILLARY SERVICES	\$1,523,794.75	\$1,544,845.70	\$1,598,915.86	\$1,578,642.14	\$1,552,802.47	\$1,392,954.97	\$1,551,069.07
TCC	\$805,488.42	\$1,916,498.95	\$2,924,401.88	\$2,024,116.77	\$1,146,989.89	\$1,002,755.26	\$1,250,132.02
	31						
ENERGY	\$11,266,334.67						
TRANSMISSION SERVICE	\$2,324,899.69						
UPLIFT	\$49,707.71						
RESIDUALS	(\$284,652.64)						
ANCILLARY SERVICES	\$1,594,884.04						
TCC	\$1,095,210.24						

