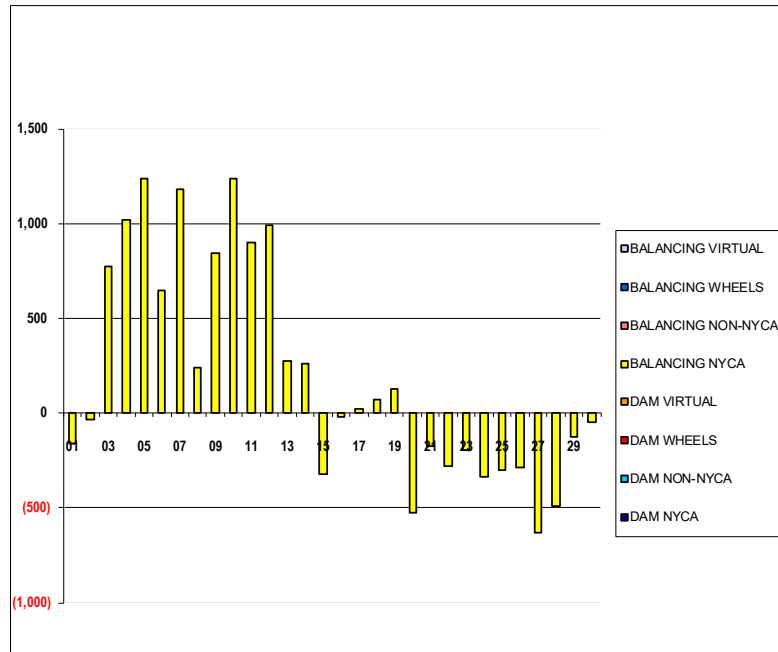


SETTLEMENTS REPORT
November 2022 Settlement Adjustment
April 7, 2023

Settlement Adjustment – Market Supply Delta Analysis

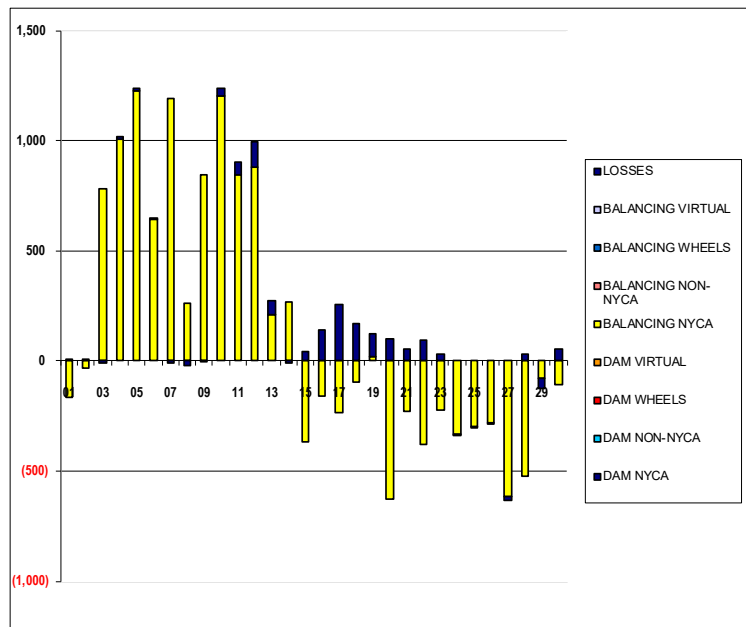
	MONDAY	TUESDAY	WEDNESDAY	THURSDAY	FRIDAY	SATURDAY	SUNDAY
		1	2	3	4	5	6
DAM NYCA		0	0	0	0	0	0
DAM NON-NYCA		0	0	0	0	0	0
DAM WHEELS		0	0	0	0	0	0
DAM VIRTUAL		0	0	0	0	0	0
BALANCING NYCA		(162)	(31)	774	1,016	1,236	649
BALANCING NON-NYCA		0	0	0	0	0	0
BALANCING WHEELS		0	0	0	0	0	0
BALANCING VIRTUAL		0	0	0	0	0	0
	7	8	9	10	11	12	13
DAM NYCA	0	0	0	0	0	0	0
DAM NON-NYCA	0	0	0	0	0	0	0
DAM WHEELS	0	0	0	0	0	0	0
DAM VIRTUAL	0	0	0	0	0	0	0
BALANCING NYCA	1,181	240	843	1,237	903	994	272
BALANCING NON-NYCA	0	0	0	0	0	0	0
BALANCING WHEELS	0	0	0	0	0	0	0
BALANCING VIRTUAL	0	0	0	0	0	0	0
	14	15	16	17	18	19	20
DAM NYCA	0	0	0	0	0	0	0
DAM NON-NYCA	0	0	0	0	0	0	0
DAM WHEELS	0	0	0	0	0	0	0
DAM VIRTUAL	0	0	0	0	0	0	0
BALANCING NYCA	260	(324)	(19)	19	74	125	(526)
BALANCING NON-NYCA	0	0	0	0	0	0	0
BALANCING WHEELS	0	0	0	0	0	0	0
BALANCING VIRTUAL	0	0	0	0	0	0	0
	21	22	23	24	25	26	27
DAM NYCA	0	0	0	0	0	0	0
DAM NON-NYCA	0	0	0	0	0	0	0
DAM WHEELS	0	0	0	0	0	0	0
DAM VIRTUAL	0	0	0	0	0	0	0
BALANCING NYCA	(175)	(282)	(194)	(338)	(300)	(287)	(632)
BALANCING NON-NYCA	0	0	0	0	0	0	0
BALANCING WHEELS	0	0	0	0	0	0	0
BALANCING VIRTUAL	0	0	0	0	0	0	0
	28	29	30				
DAM NYCA	0	0	0				
DAM NON-NYCA	0	0	0				
DAM WHEELS	0	0	0				
DAM VIRTUAL	0	0	0				
BALANCING NYCA	(491)	(125)	(49)				
BALANCING NON-NYCA	0	0	0				
BALANCING WHEELS	0	0	0				
BALANCING VIRTUAL	0	0	0				



SETTLEMENTS REPORT
November 2022 Settlement Adjustment
April 7, 2023

Settlement Adjustment – Market Withdrawals Delta Analysis

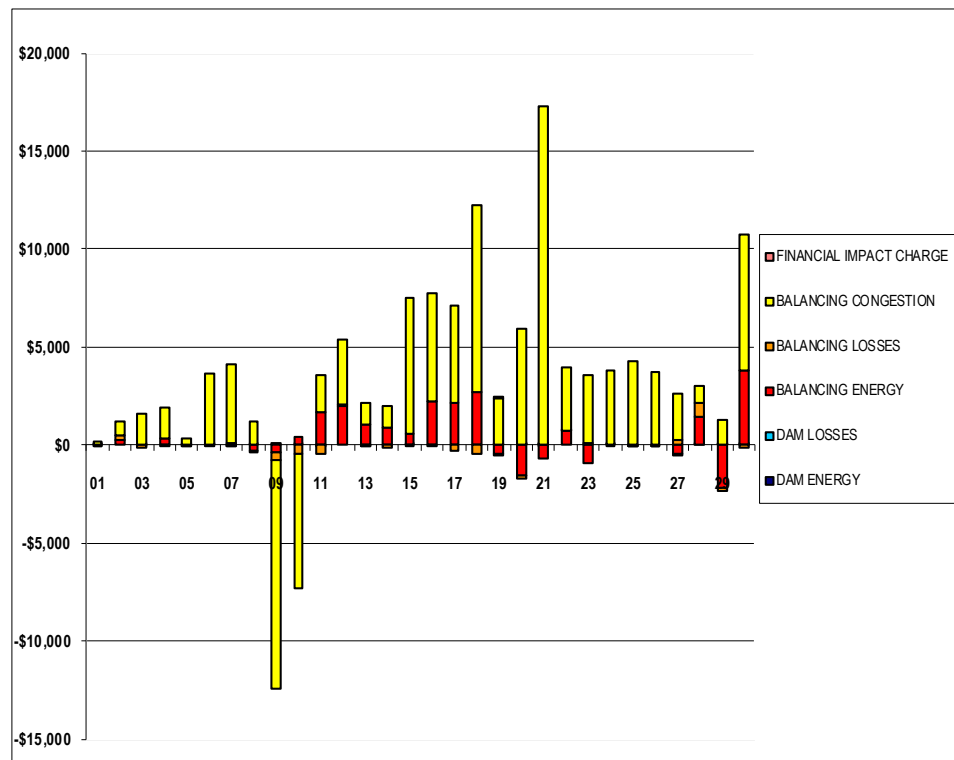
	MONDAY	TUESDAY	WEDNESDAY	THURSDAY	FRIDAY	SATURDAY	SUNDAY
		1	2	3	4	5	6
DAM NYCA		0	0	0	0	0	0
DAM NON-NYCA		0	0	0	0	0	0
DAM WHEELS		0	0	0	0	0	0
DAM VIRTUAL		0	0	0	0	0	0
BALANCING NYCA		(163)	(33)	781	1,009	1,227	643
BALANCING NON-NYCA		0	0	0	0	0	0
BALANCING WHEELS		0	0	0	0	0	0
BALANCING VIRTUAL		0	0	0	0	0	0
UFE/LOSSES		1	2	(7)	7	9	6
	7	8	9	10	11	12	13
DAM NYCA	0	0	0	0	0	0	0
DAM NON-NYCA	0	0	0	0	0	0	0
DAM WHEELS	0	0	0	0	0	0	0
DAM VIRTUAL	0	0	0	0	0	0	0
BALANCING NYCA	1,191	262	844	1,205	844	881	212
BALANCING NON-NYCA	0	0	0	0	0	0	0
BALANCING WHEELS	0	0	0	0	0	0	0
BALANCING VIRTUAL	0	0	0	0	0	0	0
UFE/LOSSES	(10)	(21)	(1)	31	59	113	60
	14	15	16	17	18	19	20
DAM NYCA	0	0	0	0	0	0	0
DAM NON-NYCA	0	0	0	0	0	0	0
DAM WHEELS	0	0	0	0	0	0	0
DAM VIRTUAL	0	0	0	0	0	0	0
BALANCING NYCA	268	(365)	(161)	(234)	(94)	20	(627)
BALANCING NON-NYCA	0	0	0	0	0	0	0
BALANCING WHEELS	0	0	0	0	0	0	0
BALANCING VIRTUAL	0	0	0	0	0	0	0
UFE/LOSSES	(8)	41	142	253	168	105	101
	21	22	23	24	25	26	27
DAM NYCA	0	0	0	0	0	0	0
DAM NON-NYCA	0	0	0	0	0	0	0
DAM WHEELS	0	0	0	0	0	0	0
DAM VIRTUAL	0	0	0	0	0	0	0
BALANCING NYCA	(231)	(377)	(223)	(333)	(297)	(282)	(618)
BALANCING NON-NYCA	0	0	0	0	0	0	0
BALANCING WHEELS	0	0	0	0	0	0	0
BALANCING VIRTUAL	0	0	0	0	0	0	0
UFE/LOSSES	56	94	30	(5)	(2)	(5)	(15)
	28	29	30				
DAM NYCA	0	0	0				
DAM NON-NYCA	0	0	0				
DAM WHEELS	0	0	0				
DAM VIRTUAL	0	0	0				
BALANCING NYCA	(522)	(81)	(105)				
BALANCING NON-NYCA	0	0	0				
BALANCING WHEELS	0	0	0				
BALANCING VIRTUAL	0	0	0				
UFE/LOSSES	31	(45)	56				



SETTLEMENTS REPORT
November 2022 Settlement Adjustment
April 7, 2023

Settlement Adjustment – Market Residuals Delta Analysis

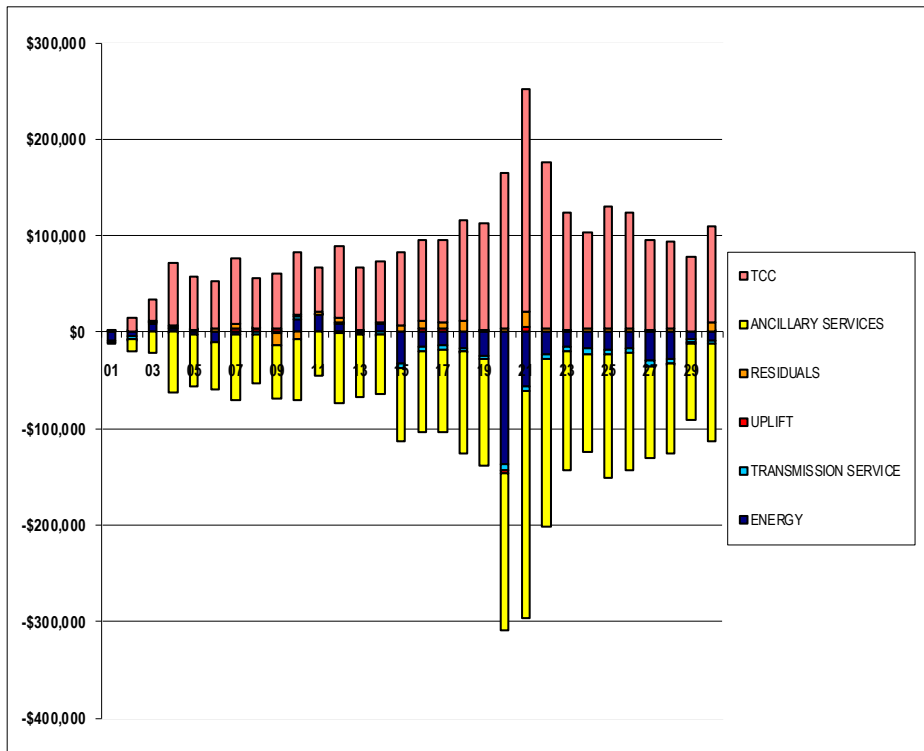
	MONDAY	TUESDAY	WEDNESDAY	THURSDAY	FRIDAY	SATURDAY	SUNDAY
		1	2	3	4	5	6
DAM ENERGY		\$0.01	\$0.00	(\$0.01)	\$0.00	(\$0.01)	\$0.00
DAM LOSSES		(\$0.01)	\$0.00	\$0.00	\$0.00	\$0.00	\$0.00
BALANCING ENERGY		\$39.91	\$259.87	\$7.08	\$341.01	\$53.90	(\$21.97)
BALANCING LOSSES		(\$62.54)	\$205.15	(\$112.66)	(\$5.91)	(\$46.02)	\$9.54
BALANCING CONGESTION		\$98.66	\$725.59	\$1,613.40	\$1,540.37	\$243.10	\$3,631.93
FINANCIAL IMPACT CHARGE		\$0.00	\$0.00	\$0.00	\$0.00	\$0.00	\$0.00
	7	8	9	10	11	12	13
DAM ENERGY	(\$0.01)	\$0.00	\$0.00	\$0.01	(\$0.01)	\$0.00	(\$0.01)
DAM LOSSES	\$0.00	\$0.01	\$0.01	\$0.00	\$0.00	\$0.00	\$0.00
BALANCING ENERGY	\$85.02	(\$265.72)	(\$391.30)	\$419.75	\$1,640.85	\$1,988.68	\$1,047.55
BALANCING LOSSES	(\$18.61)	(\$104.67)	(\$385.88)	(\$452.39)	(\$419.44)	\$62.88	(\$98.20)
BALANCING CONGESTION	\$4,035.59	\$1,179.81	(\$11,678.26)	(\$6,895.37)	\$1,931.57	\$3,313.07	\$1,072.99
FINANCIAL IMPACT CHARGE	\$0.00	\$0.00	\$0.00	\$0.00	\$0.00	\$0.00	\$0.00
	14	15	16	17	18	19	20
DAM ENERGY	\$0.00	\$0.00	\$0.00	\$0.00	\$0.00	\$0.00	\$0.01
DAM LOSSES	\$0.00	\$0.01	\$0.00	\$0.00	\$0.00	\$0.01	\$0.01
BALANCING ENERGY	\$921.14	\$602.58	\$2,221.20	\$2,177.80	\$2,709.77	(\$444.45)	(\$1,531.83)
BALANCING LOSSES	(\$174.06)	(\$80.53)	(\$9.41)	(\$288.20)	(\$421.95)	(\$35.97)	(\$223.34)
BALANCING CONGESTION	\$1,059.85	\$6,939.08	\$5,520.94	\$4,960.97	\$9,543.67	\$2,380.89	\$5,929.77
FINANCIAL IMPACT CHARGE	\$0.00	\$0.00	\$0.00	\$0.00	\$0.00	\$0.02	\$0.00
	21	22	23	24	25	26	27
DAM ENERGY	\$0.01	\$0.00	\$0.00	\$0.00	\$0.00	(\$0.01)	\$0.00
DAM LOSSES	(\$0.01)	\$0.00	\$0.00	\$0.01	(\$0.01)	\$0.00	\$0.00
BALANCING ENERGY	(\$664.18)	\$705.71	(\$918.25)	(\$53.30)	(\$0.35)	(\$21.69)	(\$470.09)
BALANCING LOSSES	\$33.65	\$43.05	\$99.20	\$11.12	(\$4.42)	(\$2.97)	\$237.59
BALANCING CONGESTION	\$17,227.28	\$3,220.82	\$3,460.23	\$3,774.81	\$4,280.46	\$3,706.59	\$2,381.91
FINANCIAL IMPACT CHARGE	\$0.00	\$0.00	\$0.00	\$0.00	\$0.00	\$0.00	(\$0.16)
	28	29	30				
DAM ENERGY	\$0.00	\$0.01	\$0.00				
DAM LOSSES	\$0.01	\$0.01	\$0.01				
BALANCING ENERGY	\$1,451.77	(\$2,161.34)	\$3,803.14				
BALANCING LOSSES	\$722.70	(\$204.27)	(\$123.66)				
BALANCING CONGESTION	\$866.44	\$1,247.33	\$6,944.84				
FINANCIAL IMPACT CHARGE	\$0.00	\$0.00	\$0.00				



SETTLEMENTS REPORT
November 2022 Settlement Adjustment
April 7, 2023

Settlement Adjustment – Market Costs Delta Analysis

	MONDAY	TUESDAY	WEDNESDAY	THURSDAY	FRIDAY	SATURDAY	SUNDAY
		1	2	3	4	5	6
ENERGY		(\$8,366.52)	(\$3,999.67)	\$9,144.95	\$3,787.87	(\$2,369.31)	(\$9,725.07)
TRANSMISSION SERVICE		(\$2,750.49)	(\$2,734.57)	\$724.46	\$1,800.74	\$1,584.23	(\$763.63)
UPLIFT		\$0.08	(\$0.40)	\$4.03	(\$0.18)	\$178.40	\$0.31
RESIDUALS		\$76.03	\$1,190.61	\$1,507.81	\$1,875.47	\$250.97	\$3,619.50
ANCILLARY SERVICES		(\$1,005.13)	(\$13,473.14)	(\$21,876.69)	(\$63,363.68)	(\$54,101.43)	(\$49,684.84)
TCC		\$119.22	\$12,898.62	\$22,335.21	\$64,224.54	\$54,959.88	\$49,640.40
	7	8	9	10	11	12	13
ENERGY	(\$3,254.44)	\$565.78	(\$438.25)	\$13,874.88	\$17,239.12	\$9,239.93	(\$909.50)
TRANSMISSION SERVICE	\$1,268.91	(\$2,305.82)	\$128.16	\$1,800.25	\$425.41	\$668.72	(\$1,623.49)
UPLIFT	\$2,965.19	\$3,065.34	\$3,172.38	\$2,424.61	\$4.01	(\$333.47)	\$0.65
RESIDUALS	\$4,101.99	\$809.43	(\$12,455.43)	(\$6,928.00)	\$3,152.97	\$5,364.63	\$2,022.33
ANCILLARY SERVICES	(\$67,697.18)	(\$51,416.29)	(\$56,343.81)	(\$63,565.18)	(\$45,013.92)	(\$72,978.84)	(\$65,621.75)
TCC	\$68,450.37	\$50,812.74	\$56,726.28	\$64,600.68	\$46,028.10	\$74,183.82	\$65,648.10
	14	15	16	17	18	19	20
ENERGY	\$8,975.60	(\$32,798.99)	(\$15,817.69)	(\$13,766.82)	(\$16,559.39)	(\$24,514.68)	(\$136,460.69)
TRANSMISSION SERVICE	(\$2,032.54)	(\$4,654.08)	(\$3,482.84)	(\$4,573.77)	(\$3,666.23)	(\$3,221.60)	(\$6,177.75)
UPLIFT	(\$14.06)	(\$21.31)	\$3,170.12	\$3,247.45	(\$3.97)	\$15.48	(\$3,306.79)
RESIDUALS	\$1,806.93	\$7,461.14	\$7,732.73	\$6,850.57	\$11,831.49	\$1,900.50	\$4,174.62
ANCILLARY SERVICES	(\$62,402.82)	(\$76,257.09)	(\$84,824.46)	(\$85,742.06)	(\$105,425.53)	(\$111,371.79)	(\$163,714.06)
TCC	\$62,324.49	\$75,233.01	\$83,742.78	\$84,621.42	\$104,362.08	\$110,494.02	\$161,268.87
	21	22	23	24	25	26	27
ENERGY	(\$55,657.48)	(\$23,189.53)	(\$15,696.24)	(\$17,043.74)	(\$18,829.90)	(\$17,439.94)	(\$29,921.66)
TRANSMISSION SERVICE	(\$4,636.29)	(\$5,285.12)	(\$4,853.85)	(\$5,344.73)	(\$4,671.71)	(\$4,743.45)	(\$6,080.67)
UPLIFT	\$4,895.08	\$0.01	\$1.89	\$0.00	\$0.01	\$0.06	\$0.04
RESIDUALS	\$16,596.75	\$3,969.58	\$2,641.18	\$3,732.64	\$4,275.68	\$3,681.92	\$2,149.25
ANCILLARY SERVICES	(\$235,488.23)	(\$173,088.05)	(\$123,233.64)	(\$101,788.28)	(\$127,469.03)	(\$121,508.02)	(\$95,369.39)
TCC	\$230,920.68	\$171,574.53	\$121,336.26	\$100,269.30	\$126,000.84	\$119,988.60	\$93,504.36
	28	29	30				
ENERGY	(\$27,162.67)	(\$7,095.85)	(\$8,314.62)				
TRANSMISSION SERVICE	(\$6,067.46)	(\$4,080.33)	(\$4,102.21)				
UPLIFT	(\$85.13)	\$0.01	\$0.22				
RESIDUALS	\$3,040.92	(\$1,118.26)	\$10,624.33				
ANCILLARY SERVICES	(\$92,756.53)	(\$79,500.76)	(\$100,097.38)				
TCC	\$90,773.01	\$78,272.07	\$98,766.24				



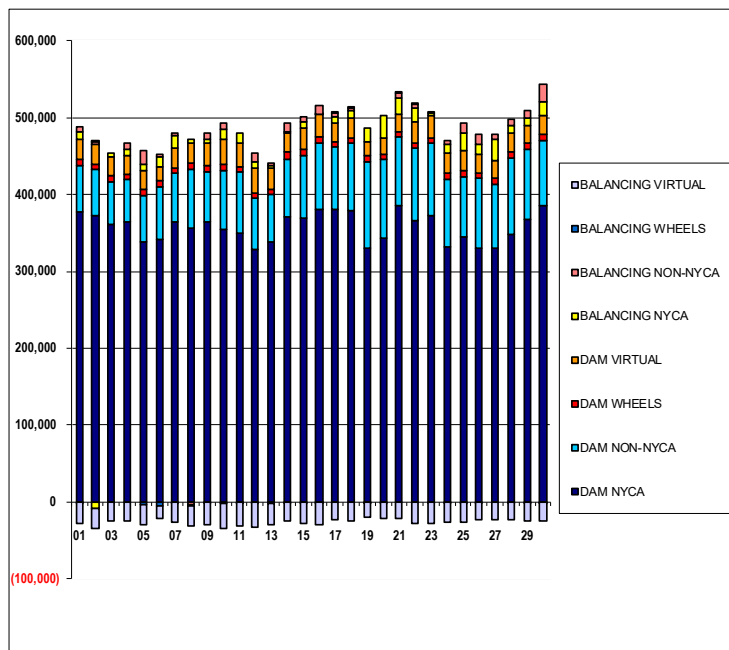
SETTLEMENTS REPORT

November 2022 Settlement Adjustment

April 7, 2023

Initial Settlement – Market Supply Analysis

	MONDAY	TUESDAY	WEDNESDAY	THURSDAY	FRIDAY	SATURDAY	SUNDAY
		1	2	3	4	5	6
DAM NYCA		377,032	373,002	360,966	364,023	338,630	341,982
DAM NON-NYCA		59,897	59,688	55,410	55,077	59,908	67,823
DAM WHEELS		8,960	7,200	7,550	7,200	7,562	8,230
DAM VIRTUAL		26,417	26,365	24,414	24,748	25,343	17,686
BALANCING NYCA		10,247	(8,551)	4,972	8,134	8,724	14,044
BALANCING NON-NYCA		5,324	2,329	(567)	7,969	17,789	2,720
BALANCING WHEELS		(1,510)	131	(350)	0	(3,986)	(4,948)
BALANCING VIRTUAL		(26,417)	(26,365)	(24,414)	(24,748)	(25,343)	(17,686)
	7	8	9	10	11	12	13
DAM NYCA	363,725	356,014	363,940	354,833	349,877	329,034	337,825
DAM NON-NYCA	63,530	76,670	65,121	76,443	78,935	65,593	61,822
DAM WHEELS	7,372	8,687	8,288	7,875	7,773	8,042	7,450
DAM VIRTUAL	25,390	26,133	29,630	32,760	31,197	32,571	27,017
BALANCING NYCA	17,442	5,199	4,550	13,386	12,667	6,937	3,068
BALANCING NON-NYCA	2,540	(4,156)	8,090	8,255	(575)	12,658	4,108
BALANCING WHEELS	(984)	(841)	(477)	(1,912)	(660)	(1,295)	(2,346)
BALANCING VIRTUAL	(25,390)	(26,133)	(29,630)	(32,760)	(31,197)	(32,571)	(27,017)
	14	15	16	17	18	19	20
DAM NYCA	370,152	370,073	380,014	380,907	379,584	330,727	343,096
DAM NON-NYCA	76,103	81,456	87,865	81,095	87,392	112,054	102,076
DAM WHEELS	8,679	8,200	8,095	7,491	7,245	7,316	7,200
DAM VIRTUAL	24,452	26,819	28,481	23,510	24,892	18,882	20,846
BALANCING NYCA	1,909	7,838	49	9,112	10,995	18,044	29,660
BALANCING NON-NYCA	11,400	6,735	10,688	3,566	2,940	(1,038)	(350)
BALANCING WHEELS	(1,304)	(861)	(895)	355	355	(116)	0
BALANCING VIRTUAL	(24,452)	(26,819)	(28,481)	(23,510)	(24,892)	(18,882)	(20,846)
	21	22	23	24	25	26	27
DAM NYCA	385,974	365,581	371,835	331,511	344,644	329,740	330,934
DAM NON-NYCA	88,477	94,213	94,604	88,009	79,066	91,273	82,641
DAM WHEELS	7,200	7,550	7,675	7,775	7,325	7,325	7,350
DAM VIRTUAL	22,377	27,823	28,114	26,453	26,118	23,378	23,225
BALANCING NYCA	22,526	17,096	4,561	11,993	22,199	13,018	28,009
BALANCING NON-NYCA	6,479	4,749	847	4,790	14,609	13,767	6,183
BALANCING WHEELS	350	100	(467)	(575)	(125)	(125)	0
BALANCING VIRTUAL	(22,377)	(27,823)	(28,114)	(26,453)	(26,118)	(23,378)	(23,225)
	28	29	30				
DAM NYCA	348,588	367,830	385,329				
DAM NON-NYCA	99,563	90,643	85,122				
DAM WHEELS	7,650	7,917	7,325				
DAM VIRTUAL	23,667	24,208	25,841				
BALANCING NYCA	10,277	8,704	16,859				
BALANCING NON-NYCA	9,064	9,380	23,287				
BALANCING WHEELS	(250)	(717)	(125)				
BALANCING VIRTUAL	(23,667)	(24,208)	(25,841)				



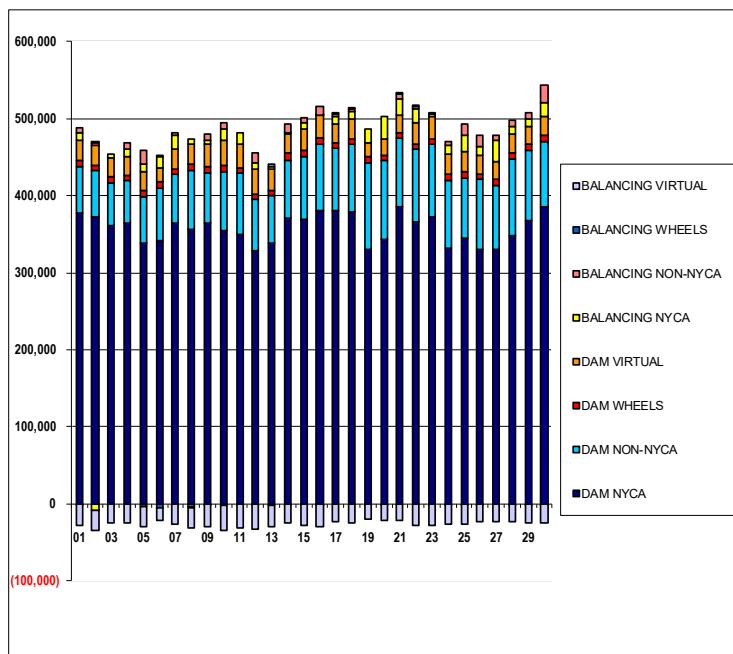
SETTLEMENTS REPORT

November 2022 Settlement Adjustment

April 7, 2023

4-Month Settlement Adjustment – Market Supply Analysis

	MONDAY	TUESDAY	WEDNESDAY	THURSDAY	FRIDAY	SATURDAY	SUNDAY
		1	2	3	4	5	6
DAM NYCA		377,032	373,002	360,966	364,023	338,630	341,982
DAM NON-NYCA		59,897	59,688	55,410	55,077	59,908	67,823
DAM WHEELS		8,960	7,200	7,550	7,200	7,562	8,230
DAM VIRTUAL		26,417	26,365	24,414	24,748	25,343	17,686
BALANCING NYCA		10,085	(8,582)	5,746	9,150	9,960	14,693
BALANCING NON-NYCA		5,324	2,329	(567)	7,969	17,789	2,720
BALANCING WHEELS		(1,510)	131	(350)	0	(3,986)	(4,948)
BALANCING VIRTUAL		(26,417)	(26,365)	(24,414)	(24,748)	(25,343)	(17,686)
	7	8	9	10	11	12	13
DAM NYCA	363,725	356,014	363,940	354,833	349,877	329,034	337,825
DAM NON-NYCA	63,530	76,670	65,121	76,443	78,935	65,593	61,822
DAM WHEELS	7,372	8,687	8,288	7,875	7,773	8,042	7,450
DAM VIRTUAL	25,390	26,133	29,630	32,760	31,197	32,571	27,017
BALANCING NYCA	18,623	5,439	5,393	14,623	13,570	7,930	3,340
BALANCING NON-NYCA	2,540	(4,156)	8,090	8,255	(575)	12,658	4,108
BALANCING WHEELS	(984)	(841)	(477)	(1,912)	(660)	(1,295)	(2,346)
BALANCING VIRTUAL	(25,390)	(26,133)	(29,630)	(32,760)	(31,197)	(32,571)	(27,017)
	14	15	16	17	18	19	20
DAM NYCA	370,152	370,073	380,014	380,907	379,584	330,727	343,096
DAM NON-NYCA	76,103	81,456	87,865	81,095	87,392	112,054	102,076
DAM WHEELS	8,679	8,200	8,095	7,491	7,245	7,316	7,200
DAM VIRTUAL	24,452	26,819	28,481	23,510	24,892	18,882	20,846
BALANCING NYCA	2,170	7,514	30	9,131	11,069	18,169	29,134
BALANCING NON-NYCA	11,400	6,735	10,688	3,566	2,940	(1,038)	(350)
BALANCING WHEELS	(1,304)	(861)	(895)	355	355	(116)	0
BALANCING VIRTUAL	(24,452)	(26,819)	(28,481)	(23,510)	(24,892)	(18,882)	(20,846)
	21	22	23	24	25	26	27
DAM NYCA	385,974	365,581	371,835	331,511	344,644	329,740	330,934
DAM NON-NYCA	88,477	94,213	94,604	88,009	79,066	91,273	82,641
DAM WHEELS	7,200	7,550	7,675	7,775	7,325	7,325	7,350
DAM VIRTUAL	22,377	27,823	28,114	26,453	26,118	23,378	23,225
BALANCING NYCA	22,352	16,814	4,368	11,656	21,900	12,731	27,377
BALANCING NON-NYCA	6,479	4,749	847	4,790	14,609	13,767	6,183
BALANCING WHEELS	350	100	(467)	(575)	(125)	(125)	0
BALANCING VIRTUAL	(22,377)	(27,823)	(28,114)	(26,453)	(26,118)	(23,378)	(23,225)
	28	29	30				
DAM NYCA	348,588	367,830	385,329				
DAM NON-NYCA	99,563	90,643	85,122				
DAM WHEELS	7,650	7,917	7,325				
DAM VIRTUAL	23,667	24,208	25,841				
BALANCING NYCA	9,786	8,578	16,810				
BALANCING NON-NYCA	9,064	9,380	23,287				
BALANCING WHEELS	(250)	(717)	(125)				
BALANCING VIRTUAL	(23,667)	(24,208)	(25,841)				



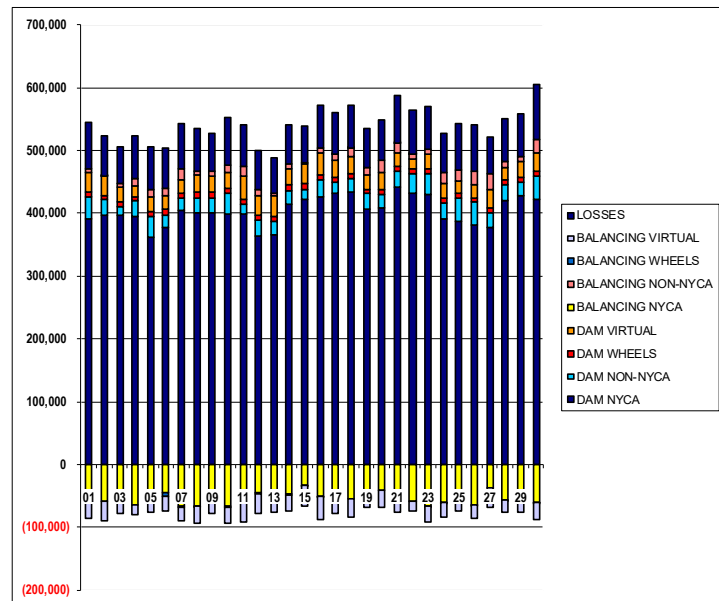
SETTLEMENTS REPORT

November 2022 Settlement Adjustment

April 7, 2023

Initial Settlement – Market Withdrawals Analysis

	MONDAY	TUESDAY	WEDNESDAY	THURSDAY	FRIDAY	SATURDAY	SUNDAY
		1	2	3	4	5	6
DAM NYCA		391,573	396,891	396,742	394,736	362,219	377,688
DAM NON-NYCA		34,232	24,684	13,565	24,986	32,272	19,897
DAM WHEELS		8,960	7,200	7,550	7,200	7,562	8,230
DAM VIRTUAL		29,380	30,275	23,081	16,941	23,035	23,064
BALANCING NYCA		(54,124)	(58,767)	(55,231)	(63,545)	(49,631)	(45,216)
BALANCING NON-NYCA		5,953	741	6,930	10,685	13,031	10,409
BALANCING WHEELS		(1,510)	131	(350)	0	(3,986)	(4,948)
BALANCING VIRTUAL		(29,380)	(30,275)	(23,081)	(16,941)	(23,035)	(23,064)
UFE/LOSSES		74,865	62,919	58,775	68,341	67,160	63,791
	7	8	9	10	11	12	13
DAM NYCA	404,232	400,103	401,317	398,057	399,300	363,896	365,680
DAM NON-NYCA	19,630	24,701	23,690	34,020	14,807	24,679	21,478
DAM WHEELS	7,372	8,687	8,288	7,875	7,773	8,042	7,450
DAM VIRTUAL	21,318	26,816	26,388	24,381	38,179	31,780	33,193
BALANCING NYCA	(66,887)	(66,193)	(51,606)	(66,369)	(53,407)	(45,489)	(40,326)
BALANCING NON-NYCA	17,769	7,559	7,159	12,997	13,831	9,332	3,339
BALANCING WHEELS	(984)	(841)	(477)	(1,912)	(660)	(1,295)	(2,346)
BALANCING VIRTUAL	(21,318)	(26,816)	(26,388)	(24,381)	(38,179)	(31,780)	(33,193)
UFE/LOSSES	72,492	67,557	61,141	74,213	66,373	61,803	56,652
	14	15	16	17	18	19	20
DAM NYCA	413,918	421,783	425,809	430,910	433,406	406,381	408,176
DAM NON-NYCA	22,557	16,849	27,213	18,990	22,663	24,532	22,022
DAM WHEELS	8,679	8,200	8,095	7,491	7,245	7,316	7,200
DAM VIRTUAL	26,542	32,191	35,771	27,952	27,742	22,968	27,147
BALANCING NYCA	(46,560)	(32,405)	(50,218)	(50,463)	(55,286)	(45,132)	(40,022)
BALANCING NON-NYCA	6,492	1,337	6,751	9,383	13,066	11,461	20,593
BALANCING WHEELS	(1,304)	(861)	(895)	355	355	(116)	0
BALANCING VIRTUAL	(26,542)	(32,191)	(35,771)	(27,952)	(27,742)	(22,968)	(27,147)
UFE/LOSSES	63,157	58,538	69,061	65,860	67,062	62,547	63,713
	21	22	23	24	25	26	27
DAM NYCA	441,730	432,160	430,669	390,064	386,732	380,660	377,555
DAM NON-NYCA	25,489	31,404	31,654	25,969	38,198	36,657	23,218
DAM WHEELS	7,200	7,550	7,675	7,775	7,325	7,325	7,350
DAM VIRTUAL	21,812	16,183	24,849	22,705	18,456	20,545	29,442
BALANCING NYCA	(54,758)	(58,489)	(66,321)	(60,426)	(55,613)	(64,998)	(37,682)
BALANCING NON-NYCA	14,861	7,633	6,503	17,765	17,707	22,591	24,709
BALANCING WHEELS	350	100	(467)	(575)	(125)	(125)	0
BALANCING VIRTUAL	(21,812)	(16,183)	(24,849)	(22,705)	(18,456)	(20,545)	(29,442)
UFE/LOSSES	76,135	68,932	69,341	62,931	73,495	72,888	59,967
	28	29	30				
DAM NYCA	420,026	427,106	422,650				
DAM NON-NYCA	26,439	21,975	37,003				
DAM WHEELS	7,650	7,917	7,325				
DAM VIRTUAL	18,473	25,832	28,350				
BALANCING NYCA	(56,460)	(48,643)	(59,380)				
BALANCING NON-NYCA	8,999	6,912	22,112				
BALANCING WHEELS	(250)	(717)	(125)				
BALANCING VIRTUAL	(18,473)	(25,832)	(28,350)				
UFE/LOSSES	68,489	69,207	88,211				



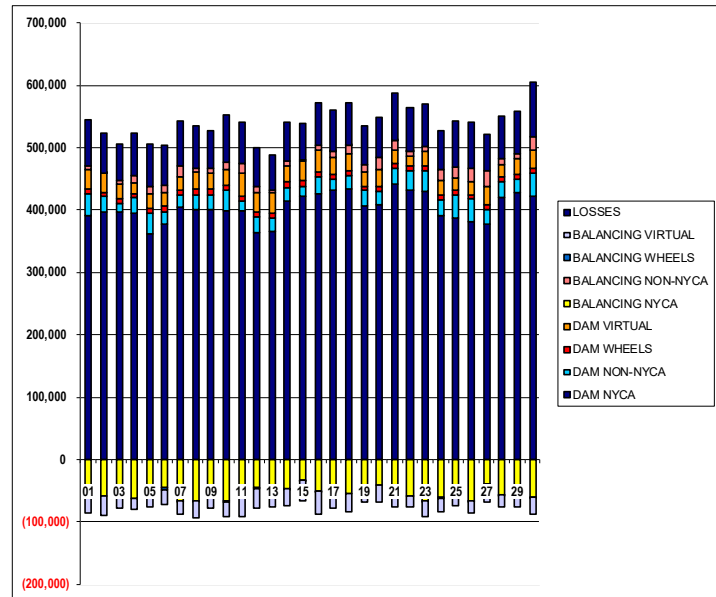
SETTLEMENTS REPORT

November 2022 Settlement Adjustment

April 7, 2023

4-Month Settlement Adjustment – Market Withdrawals Analysis

	MONDAY	TUESDAY	WEDNESDAY	THURSDAY	FRIDAY	SATURDAY	SUNDAY
		1	2	3	4	5	6
DAM NYCA		391,573	396,891	396,742	394,736	362,219	377,688
DAM NON-NYCA		34,232	24,684	13,565	24,986	32,272	19,897
DAM WHEELS		8,960	7,200	7,550	7,200	7,562	8,230
DAM VIRTUAL		29,380	30,275	23,081	16,941	23,035	23,064
BALANCING NYCA		(54,287)	(58,800)	(54,450)	(62,537)	(48,404)	(44,573)
BALANCING NON-NYCA		5,953	741	6,930	10,685	13,031	10,409
BALANCING WHEELS		(1,510)	131	(350)	0	(3,986)	(4,948)
BALANCING VIRTUAL		(29,380)	(30,275)	(23,081)	(16,941)	(23,035)	(23,064)
UFE/LOSSES		74,866	62,921	58,768	68,348	67,169	63,797
	7	8	9	10	11	12	13
DAM NYCA	404,232	400,103	401,317	398,057	399,300	363,896	365,680
DAM NON-NYCA	19,630	24,701	23,690	34,020	14,807	24,679	21,478
DAM WHEELS	7,372	8,687	8,288	7,875	7,773	8,042	7,450
DAM VIRTUAL	21,318	26,816	26,388	24,381	38,179	31,780	33,193
BALANCING NYCA	(65,696)	(65,932)	(50,761)	(65,163)	(52,563)	(44,609)	(40,115)
BALANCING NON-NYCA	17,769	7,559	7,159	12,997	13,831	9,332	3,339
BALANCING WHEELS	(984)	(841)	(477)	(1,912)	(660)	(1,295)	(2,346)
BALANCING VIRTUAL	(21,318)	(26,816)	(26,388)	(24,381)	(38,179)	(31,780)	(33,193)
UFE/LOSSES	72,482	67,535	61,140	74,244	66,432	61,916	56,712
	14	15	16	17	18	19	20
DAM NYCA	413,918	421,783	425,809	430,910	433,406	406,381	408,176
DAM NON-NYCA	22,557	16,849	27,213	18,990	22,663	24,532	22,022
DAM WHEELS	8,679	8,200	8,095	7,491	7,245	7,316	7,200
DAM VIRTUAL	26,542	32,191	35,771	27,952	27,742	22,968	27,147
BALANCING NYCA	(46,292)	(32,770)	(50,380)	(50,697)	(55,380)	(45,112)	(40,649)
BALANCING NON-NYCA	6,492	1,337	6,751	9,383	13,066	11,461	20,593
BALANCING WHEELS	(1,304)	(861)	(895)	355	355	(116)	0
BALANCING VIRTUAL	(26,542)	(32,191)	(35,771)	(27,952)	(27,742)	(22,968)	(27,147)
UFE/LOSSES	63,149	58,579	69,203	66,113	67,230	62,652	63,814
	21	22	23	24	25	26	27
DAM NYCA	441,730	432,160	430,669	390,064	386,732	380,660	377,555
DAM NON-NYCA	25,489	31,404	31,654	25,969	38,198	36,657	23,218
DAM WHEELS	7,200	7,550	7,675	7,775	7,325	7,325	7,350
DAM VIRTUAL	21,812	16,183	24,849	22,705	18,456	20,545	29,442
BALANCING NYCA	(54,989)	(58,866)	(66,544)	(60,759)	(55,910)	(65,280)	(38,300)
BALANCING NON-NYCA	14,861	7,633	6,503	17,765	17,707	22,591	24,709
BALANCING WHEELS	350	100	(467)	(575)	(125)	(125)	0
BALANCING VIRTUAL	(21,812)	(16,183)	(24,849)	(22,705)	(18,456)	(20,545)	(29,442)
UFE/LOSSES	76,191	69,026	69,371	62,926	73,492	72,883	59,953
	28	29	30				
DAM NYCA	420,026	427,106	422,650				
DAM NON-NYCA	26,439	21,975	37,003				
DAM WHEELS	7,650	7,917	7,325				
DAM VIRTUAL	18,473	25,832	28,350				
BALANCING NYCA	(56,983)	(48,724)	(59,485)				
BALANCING NON-NYCA	8,999	6,912	22,112				
BALANCING WHEELS	(250)	(717)	(125)				
BALANCING VIRTUAL	(18,473)	(25,832)	(28,350)				
UFE/LOSSES	68,520	69,163	88,267				



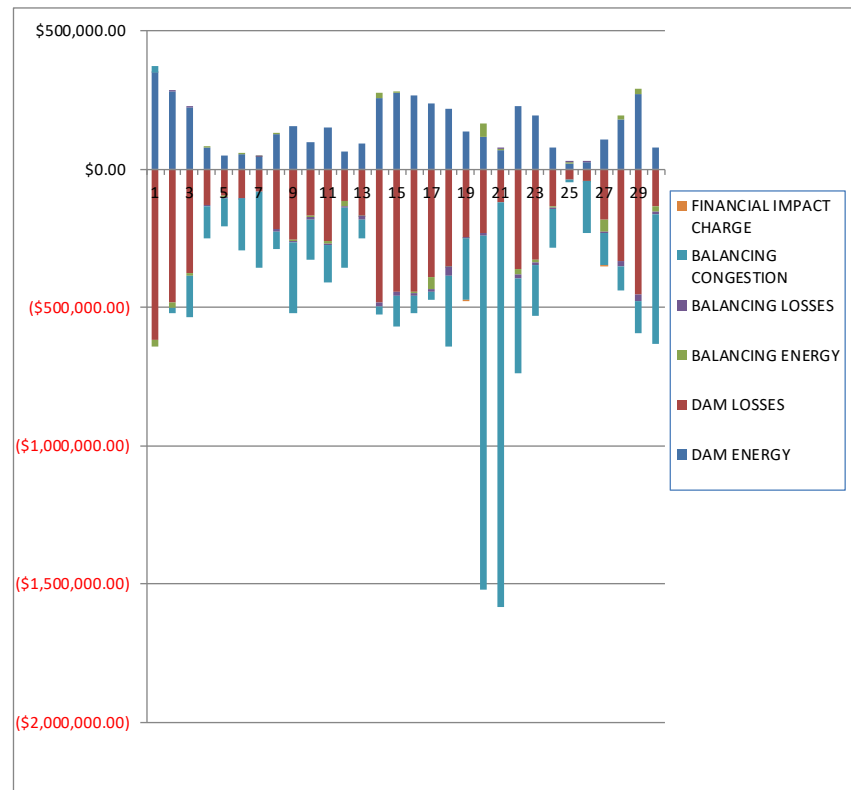
SETTLEMENTS REPORT

November 2022 Settlement Adjustment

April 7, 2023

Initial Settlement – Market Residuals Analysis

	MONDAY	TUESDAY	WEDNESDAY	THURSDAY	FRIDAY	SATURDAY	SUNDAY
		1	2	3	4	5	6
DAM ENERGY		\$347,369.36	\$278,723.17	\$221,643.79	\$76,723.92	\$50,200.30	\$54,601.43
DAM LOSSES		(\$619,550.19)	(\$481,261.57)	(\$376,839.44)	(\$129,464.98)	(\$96,163.04)	(\$104,668.31)
BALANCING ENERGY		(\$23,383.78)	(\$21,135.60)	(\$9,066.44)	\$1,907.32	(\$6,619.40)	\$2,118.08
BALANCING LOSSES		\$443.00	\$1,248.53	\$1,989.12	(\$6,767.46)	(\$1,344.83)	(\$113.36)
BALANCING CONGESTION		\$24,131.29	(\$16,341.39)	(\$149,292.89)	(\$116,486.42)	(\$101,101.65)	(\$190,354.77)
FINANCIAL IMPACT CHARGE		\$0.00	\$0.00	\$0.00	\$0.00	\$0.00	\$0.00
	7	8	9	10	11	12	13
DAM ENERGY	\$42,374.19	\$125,996.13	\$156,559.98	\$99,034.21	\$147,902.43	\$61,101.28	\$91,954.15
DAM LOSSES	(\$80,713.24)	(\$216,198.90)	(\$255,958.25)	(\$168,401.05)	(\$259,748.09)	(\$113,103.43)	(\$166,489.35)
BALANCING ENERGY	\$601.00	\$1,077.80	(\$2,093.54)	(\$5,690.26)	(\$11,316.77)	(\$23,645.78)	(\$2,744.59)
BALANCING LOSSES	\$229.96	(\$12,515.14)	(\$7,220.25)	(\$8,090.20)	(\$3,329.46)	(\$5,251.40)	(\$16,239.61)
BALANCING CONGESTION	(\$274,226.46)	(\$58,976.04)	(\$256,078.36)	(\$145,985.54)	(\$135,461.62)	(\$213,912.65)	(\$63,848.62)
FINANCIAL IMPACT CHARGE	\$0.00	\$0.00	\$0.00	\$0.00	\$0.00	\$0.00	\$0.00
	14	15	16	17	18	19	20
DAM ENERGY	\$253,989.56	\$274,302.34	\$265,415.44	\$236,592.60	\$215,972.91	\$134,789.03	\$118,488.94
DAM LOSSES	(\$483,453.38)	(\$443,825.58)	(\$443,232.21)	(\$392,532.24)	(\$351,857.71)	(\$246,032.11)	(\$231,214.70)
BALANCING ENERGY	\$19,707.79	\$7,497.34	(\$6,991.12)	(\$39,419.41)	(\$2,158.01)	(\$1,356.78)	\$48,501.80
BALANCING LOSSES	(\$15,780.02)	(\$15,421.80)	(\$6,964.45)	(\$13,414.57)	(\$30,271.96)	(\$3,302.15)	(\$7,524.72)
BALANCING CONGESTION	(\$27,903.87)	(\$111,416.44)	(\$65,125.51)	(\$27,019.38)	(\$259,560.44)	(\$223,728.30)	(\$1,281,758.99)
FINANCIAL IMPACT CHARGE	\$0.00	\$0.00	\$0.00	\$0.00	\$0.00	(\$2,899.73)	\$0.00
	21	22	23	24	25	26	27
DAM ENERGY	\$67,568.15	\$226,459.93	\$194,893.76	\$77,948.85	\$21,821.41	\$24,022.17	\$104,674.28
DAM LOSSES	(\$120,685.81)	(\$363,745.14)	(\$327,873.77)	(\$136,840.55)	(\$37,433.28)	(\$41,354.55)	(\$183,958.44)
BALANCING ENERGY	\$6,369.94	(\$15,851.13)	(\$9,060.94)	(\$4,871.79)	\$1,474.17	(\$2,203.83)	(\$41,549.02)
BALANCING LOSSES	\$102.60	(\$17,038.04)	(\$10,866.03)	(\$562.36)	\$1,122.51	\$408.74	(\$7,193.72)
BALANCING CONGESTION	(\$1,462,786.19)	(\$341,046.43)	(\$182,852.65)	(\$143,428.60)	(\$11,760.91)	(\$187,289.97)	(\$114,569.80)
FINANCIAL IMPACT CHARGE	\$0.00	\$0.00	\$0.00	\$0.00	\$0.00	\$0.00	(\$351.58)
	28	29	30				
DAM ENERGY	\$179,469.35	\$271,787.95	\$76,790.87				
DAM LOSSES	(\$334,421.32)	(\$452,933.42)	(\$136,788.12)				
BALANCING ENERGY	\$16,309.16	\$18,438.68	(\$17,025.03)				
BALANCING LOSSES	(\$17,345.56)	(\$26,632.71)	(\$9,527.76)				
BALANCING CONGESTION	(\$85,398.12)	(\$115,476.80)	(\$470,759.50)				
FINANCIAL IMPACT CHARGE	\$0.00	\$0.00	\$0.00				



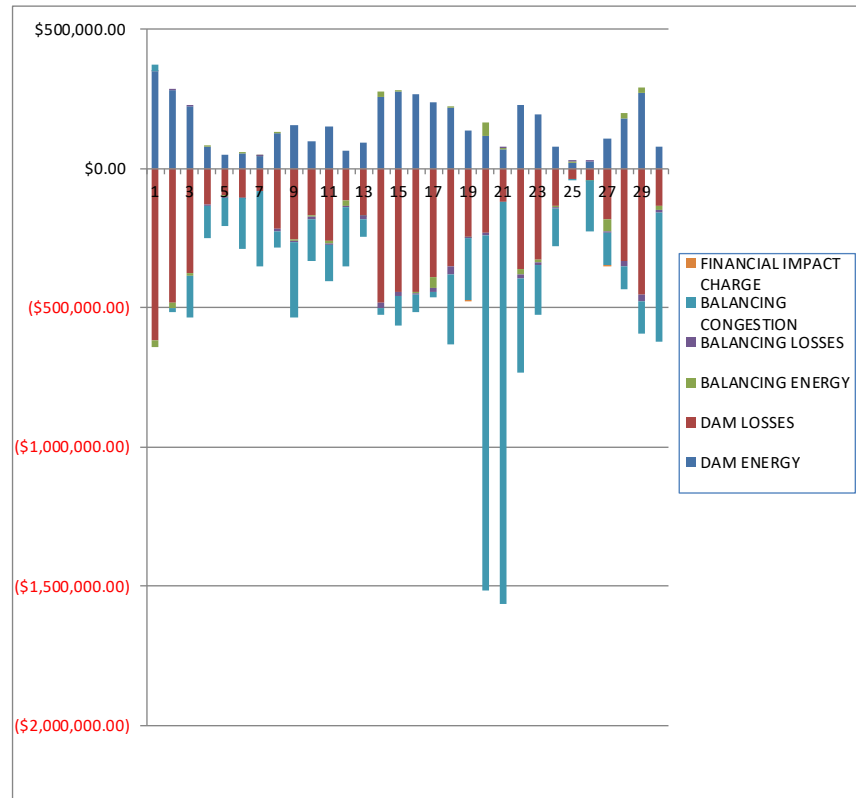
SETTLEMENTS REPORT

November 2022 Settlement Adjustment

April 7, 2023

4-Month Settlement Adjustment – Market Residuals Analysis

	MONDAY	TUESDAY	WEDNESDAY	THURSDAY	FRIDAY	SATURDAY	SUNDAY
		1	2	3	4	5	6
DAM ENERGY		\$347,369.37	\$278,723.17	\$221,643.78	\$76,723.92	\$50,200.29	\$54,601.43
DAM LOSSES		(\$619,550.20)	(\$481,261.57)	(\$376,839.44)	(\$129,464.98)	(\$96,163.04)	(\$104,668.31)
BALANCING ENERGY		(\$23,343.87)	(\$20,875.73)	(\$9,059.36)	\$2,248.33	(\$6,565.50)	\$2,096.11
BALANCING LOSSES		\$380.46	\$1,453.68	\$1,876.46	(\$6,773.37)	(\$1,390.85)	(\$103.82)
BALANCING CONGESTION		\$24,229.95	(\$15,615.80)	(\$147,679.49)	(\$114,946.05)	(\$100,858.55)	(\$186,722.84)
FINACIAL IMPACT CHARGE		\$0.00	\$0.00	\$0.00	\$0.00	\$0.00	\$0.00
	7	8	9	10	11	12	13
DAM ENERGY	\$42,374.18	\$125,996.13	\$156,559.98	\$99,034.22	\$147,902.42	\$61,101.28	\$91,954.14
DAM LOSSES	(\$80,713.24)	(\$216,198.89)	(\$255,958.24)	(\$168,401.05)	(\$259,748.09)	(\$113,103.43)	(\$166,489.35)
BALANCING ENERGY	\$686.02	\$812.08	(\$2,484.84)	(\$5,270.51)	(\$9,675.92)	(\$21,657.10)	(\$1,697.04)
BALANCING LOSSES	\$211.35	(\$12,619.81)	(\$7,606.13)	(\$8,542.59)	(\$3,748.90)	(\$5,188.52)	(\$16,337.81)
BALANCING CONGESTION	(\$270,190.87)	(\$57,796.23)	(\$267,756.62)	(\$152,880.91)	(\$133,530.05)	(\$210,599.58)	(\$62,775.63)
FINACIAL IMPACT CHARGE	\$0.00	\$0.00	\$0.00	\$0.00	\$0.00	\$0.00	\$0.00
	14	15	16	17	18	19	20
DAM ENERGY	\$253,989.56	\$274,302.34	\$265,415.44	\$236,592.60	\$215,972.91	\$134,789.03	\$118,488.95
DAM LOSSES	(\$483,453.38)	(\$443,825.57)	(\$443,232.21)	(\$392,532.24)	(\$351,857.71)	(\$246,032.10)	(\$231,214.69)
BALANCING ENERGY	\$20,628.93	\$8,099.92	(\$4,769.92)	(\$37,241.61)	\$551.76	(\$1,801.23)	\$46,969.97
BALANCING LOSSES	(\$15,954.08)	(\$15,502.33)	(\$6,973.86)	(\$13,702.77)	(\$30,693.91)	(\$3,338.12)	(\$7,748.06)
BALANCING CONGESTION	(\$26,844.02)	(\$104,477.36)	(\$59,604.57)	(\$22,058.41)	(\$250,016.77)	(\$221,347.41)	(\$1,275,829.22)
FINACIAL IMPACT CHARGE	\$0.00	\$0.00	\$0.00	\$0.00	\$0.00	(\$2,899.71)	\$0.00
	21	22	23	24	25	26	27
DAM ENERGY	\$67,568.16	\$226,459.93	\$194,893.76	\$77,948.85	\$21,821.41	\$24,022.16	\$104,674.28
DAM LOSSES	(\$120,685.82)	(\$363,745.14)	(\$327,873.77)	(\$136,840.54)	(\$37,433.29)	(\$41,354.55)	(\$183,958.44)
BALANCING ENERGY	\$5,705.76	(\$15,145.42)	(\$9,979.19)	(\$4,925.09)	\$1,473.82	(\$2,225.52)	(\$42,019.11)
BALANCING LOSSES	\$136.25	(\$16,994.99)	(\$10,756.83)	(\$551.24)	\$1,118.09	\$405.77	(\$6,956.13)
BALANCING CONGESTION	(\$1,445,558.91)	(\$337,825.61)	(\$179,392.42)	(\$139,653.79)	(\$7,480.45)	(\$183,583.38)	(\$112,187.89)
FINACIAL IMPACT CHARGE	\$0.00	\$0.00	\$0.00	\$0.00	\$0.00	\$0.00	(\$351.74)
	28	29	30				
DAM ENERGY	\$179,469.35	\$271,787.96	\$76,790.87				
DAM LOSSES	(\$334,421.31)	(\$452,933.41)	(\$136,788.11)				
BALANCING ENERGY	\$17,760.93	\$16,277.34	(\$13,221.89)				
BALANCING LOSSES	(\$16,622.86)	(\$26,836.98)	(\$9,651.42)				
BALANCING CONGESTION	(\$84,531.68)	(\$114,229.47)	(\$463,814.66)				
FINACIAL IMPACT CHARGE	\$0.00	\$0.00	\$0.00				



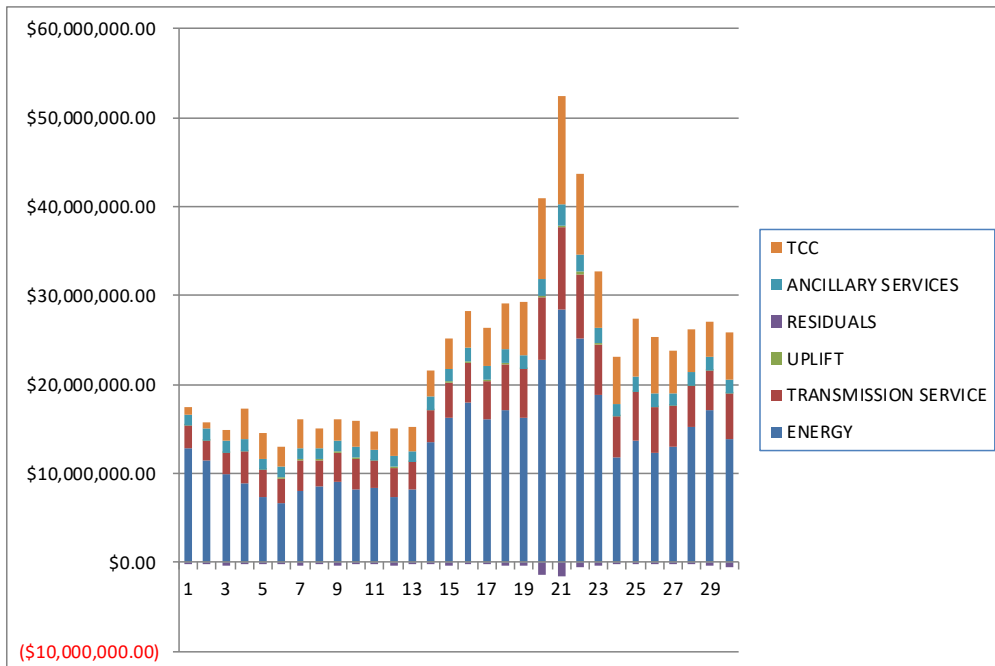
SETTLEMENTS REPORT

November 2022 Settlement Adjustment

April 7, 2023

Initial Settlement – Market Costs Analysis

	MONDAY	TUESDAY	WEDNESDAY	THURSDAY	FRIDAY	SATURDAY	SUNDAY
		1	2	3	4	5	6
ENERGY		\$12,880,581.88	\$11,415,042.40	\$9,832,633.40	\$8,861,358.21	\$7,266,620.17	\$6,681,693.82
TRANSMISSION SERVICE		\$2,463,004.90	\$2,241,878.51	\$2,510,623.40	\$3,665,659.48	\$3,145,368.68	\$2,794,175.32
UPLIFT		\$23,305.40	\$57,234.30	\$46,126.14	\$30,473.84	\$5,547.42	\$14,966.67
RESIDUALS		(\$270,990.32)	(\$238,766.86)	(\$311,565.86)	(\$174,087.62)	(\$155,028.62)	(\$238,416.93)
ANCILLARY SERVICES		\$1,278,882.91	\$1,264,135.40	\$1,213,675.31	\$1,364,683.46	\$1,263,257.80	\$1,200,137.00
TCC		\$754,726.67	\$742,543.87	\$1,320,810.35	\$3,369,492.36	\$2,778,925.63	\$2,329,675.59
	7	8	9	10	11	12	13
ENERGY	\$7,967,735.80	\$8,527,835.40	\$9,072,658.38	\$8,207,451.89	\$8,344,324.02	\$7,395,817.08	\$8,138,488.69
TRANSMISSION SERVICE	\$3,557,769.69	\$3,004,833.51	\$3,319,982.69	\$3,470,452.17	\$3,058,290.99	\$3,284,390.73	\$3,069,947.50
UPLIFT	\$89,428.74	\$49,691.39	\$100,553.49	\$42,102.40	\$23,561.72	\$13,713.22	\$679.85
RESIDUALS	(\$311,734.55)	(\$160,616.15)	(\$364,790.42)	(\$229,132.84)	(\$261,953.51)	(\$294,811.98)	(\$157,368.02)
ANCILLARY SERVICES	\$1,268,586.54	\$1,222,139.14	\$1,189,677.36	\$1,305,600.71	\$1,229,540.27	\$1,269,589.78	\$1,295,179.35
TCC	\$3,235,115.69	\$2,255,526.49	\$2,379,443.03	\$2,864,084.07	\$2,051,379.08	\$3,061,734.60	\$2,689,191.14
	14	15	16	17	18	19	20
ENERGY	\$13,564,934.53	\$16,212,417.22	\$18,012,879.33	\$16,032,000.31	\$17,143,210.44	\$16,270,639.95	\$22,724,878.93
TRANSMISSION SERVICE	\$3,522,451.12	\$4,052,393.08	\$4,454,720.92	\$4,413,646.81	\$5,141,192.12	\$5,406,634.13	\$7,110,312.85
UPLIFT	\$84,932.80	\$88,231.56	\$75,980.31	\$111,024.87	\$214,347.70	\$20,746.40	\$169,836.55
RESIDUALS	(\$253,439.92)	(\$288,864.14)	(\$256,897.85)	(\$235,793.00)	(\$427,875.21)	(\$342,530.04)	(\$1,353,507.67)
ANCILLARY SERVICES	\$1,450,857.83	\$1,457,783.35	\$1,643,628.15	\$1,533,894.12	\$1,544,242.29	\$1,566,406.84	\$1,893,253.20
TCC	\$2,919,536.44	\$3,383,752.96	\$4,136,638.27	\$4,271,868.28	\$5,138,258.32	\$6,102,614.25	\$9,072,864.66
	21	22	23	24	25	26	27
ENERGY	\$28,413,155.01	\$25,152,691.86	\$18,816,439.73	\$11,731,172.02	\$13,666,378.99	\$12,322,701.65	\$13,024,180.40
TRANSMISSION SERVICE	\$9,263,508.89	\$7,291,898.19	\$5,604,022.42	\$4,645,094.63	\$5,576,567.72	\$5,193,375.38	\$4,538,025.73
UPLIFT	\$239,830.73	\$186,245.44	\$296,695.16	\$372.50	\$11,442.91	\$1,015.59	\$11,412.90
RESIDUALS	(\$1,509,431.31)	(\$511,220.81)	(\$335,749.63)	(\$207,754.45)	(\$24,776.10)	(\$206,417.44)	(\$242,948.28)
ANCILLARY SERVICES	\$2,318,688.41	\$1,987,635.33	\$1,651,231.04	\$1,452,461.70	\$1,556,670.58	\$1,533,766.59	\$1,424,599.97
TCC	\$12,250,074.23	\$9,012,859.27	\$6,297,729.35	\$5,254,682.10	\$6,649,278.74	\$6,215,649.70	\$4,883,525.29
	28	29	30				
ENERGY	\$15,289,079.02	\$17,187,735.93	\$13,813,314.21				
TRANSMISSION SERVICE	\$4,598,754.71	\$4,409,909.36	\$5,179,606.59				
UPLIFT	\$5,416.06	\$5,565.48	\$16,844.74				
RESIDUALS	(\$241,386.49)	(\$304,816.30)	(\$557,309.54)				
ANCILLARY SERVICES	\$1,583,554.64	\$1,556,743.45	\$1,521,911.30				
TCC	\$4,637,685.44	\$3,967,080.19	\$5,328,498.16				



SETTLEMENTS REPORT
November 2022 Settlement Adjustment
April 7, 2023

4-Month Settlement Adjustment – Market Costs Analysis

	MONDAY	TUESDAY	WEDNESDAY	THURSDAY	FRIDAY	SATURDAY	SUNDAY
		1	2	3	4	5	6
ENERGY		\$12,872,215.36	\$11,411,042.73	\$9,841,778.35	\$8,865,146.08	\$7,264,250.86	\$6,671,968.75
TRANSMISSION SERVICE		\$2,460,254.41	\$2,239,143.94	\$2,511,347.86	\$3,667,460.22	\$3,146,952.91	\$2,793,411.69
UPLIFT		\$23,305.48	\$57,233.90	\$46,130.17	\$30,473.66	\$5,725.82	\$14,966.98
RESIDUALS		(\$270,914.29)	(\$237,576.25)	(\$310,058.05)	(\$172,212.15)	(\$154,777.65)	(\$234,797.43)
ANCILLARY SERVICES		\$1,277,877.78	\$1,250,662.26	\$1,191,798.62	\$1,301,319.78	\$1,209,156.37	\$1,150,452.16
TCC		\$754,845.89	\$755,442.49	\$1,343,145.56	\$3,433,716.90	\$2,833,885.51	\$2,379,315.99
	7	8	9	10	11	12	13
ENERGY	\$7,964,481.36	\$8,528,401.18	\$9,072,220.13	\$8,221,326.77	\$8,361,563.14	\$7,405,057.01	\$8,137,579.19
TRANSMISSION SERVICE	\$3,559,038.60	\$3,002,527.69	\$3,320,110.85	\$3,472,252.42	\$3,058,716.40	\$3,285,059.45	\$3,068,324.01
UPLIFT	\$92,393.93	\$52,756.73	\$103,725.87	\$44,527.01	\$23,565.73	\$13,379.75	\$680.50
RESIDUALS	(\$307,632.56)	(\$159,806.72)	(\$377,245.85)	(\$236,060.84)	(\$258,800.54)	(\$289,447.35)	(\$155,345.69)
ANCILLARY SERVICES	\$1,200,889.36	\$1,170,722.85	\$1,133,333.55	\$1,242,035.53	\$1,184,526.35	\$1,196,610.94	\$1,229,557.60
TCC	\$3,303,566.06	\$2,306,339.23	\$2,436,169.31	\$2,928,684.75	\$2,097,407.18	\$3,135,918.42	\$2,754,839.24
	14	15	16	17	18	19	20
ENERGY	\$13,573,910.13	\$16,179,618.23	\$17,997,061.64	\$16,018,233.49	\$17,126,651.05	\$16,246,125.27	\$22,588,418.24
TRANSMISSION SERVICE	\$3,520,418.58	\$4,047,739.00	\$4,451,238.08	\$4,409,073.04	\$5,137,525.89	\$5,403,412.53	\$7,104,135.10
UPLIFT	\$84,918.74	\$88,210.25	\$79,150.43	\$114,272.32	\$214,343.73	\$20,761.88	\$166,529.76
RESIDUALS	(\$251,632.99)	(\$281,403.00)	(\$249,165.12)	(\$228,942.43)	(\$416,043.72)	(\$340,629.54)	(\$1,349,333.05)
ANCILLARY SERVICES	\$1,388,455.01	\$1,381,526.26	\$1,558,803.69	\$1,448,152.06	\$1,438,816.76	\$1,455,035.05	\$1,729,539.14
TCC	\$2,981,860.93	\$3,458,985.97	\$4,220,381.05	\$4,356,489.70	\$5,242,620.40	\$6,213,108.27	\$9,234,133.53
	21	22	23	24	25	26	27
ENERGY	\$28,357,497.53	\$25,129,502.33	\$18,800,743.49	\$11,714,128.28	\$13,647,549.09	\$12,305,261.71	\$12,994,258.74
TRANSMISSION SERVICE	\$9,258,872.60	\$7,286,613.07	\$5,599,168.57	\$4,639,749.90	\$5,571,896.01	\$5,188,631.93	\$4,531,945.06
UPLIFT	\$244,725.81	\$186,245.45	\$296,697.05	\$372.50	\$11,442.92	\$1,015.65	\$11,412.94
RESIDUALS	(\$1,492,834.56)	(\$507,251.23)	(\$333,108.45)	(\$204,021.81)	(\$20,500.42)	(\$202,735.52)	(\$240,799.03)
ANCILLARY SERVICES	\$2,083,200.18	\$1,814,547.28	\$1,527,997.40	\$1,350,673.42	\$1,429,201.55	\$1,412,258.57	\$1,329,230.58
TCC	\$12,480,994.91	\$9,184,433.80	\$6,419,065.61	\$5,354,951.40	\$6,775,279.58	\$6,335,638.30	\$4,977,029.65
	28	29	30				
ENERGY	\$15,261,916.35	\$17,180,640.08	\$13,804,999.59				
TRANSMISSION SERVICE	\$4,592,687.25	\$4,405,829.03	\$5,175,504.38				
UPLIFT	\$5,330.93	\$5,565.49	\$16,844.96				
RESIDUALS	(\$238,345.57)	(\$305,934.56)	(\$546,685.21)				
ANCILLARY SERVICES	\$1,490,798.11	\$1,477,242.69	\$1,421,813.92				
TCC	\$4,728,458.45	\$4,045,352.26	\$5,427,264.40				

