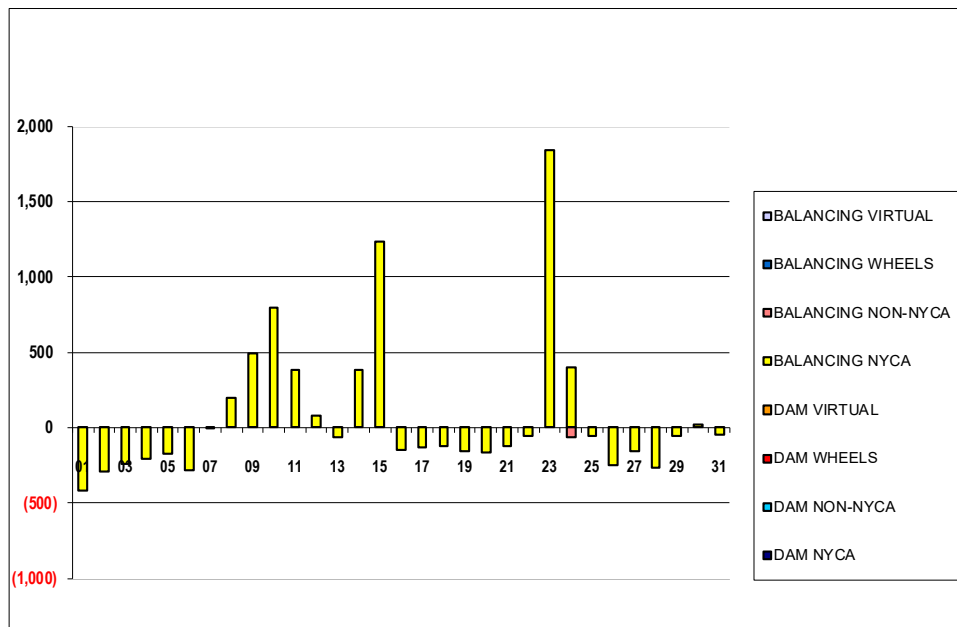


SETTLEMENTS REPORT
December 2022 Settlement Adjustment
May 5, 2023

Settlement Adjustment – Market Supply Delta Analysis

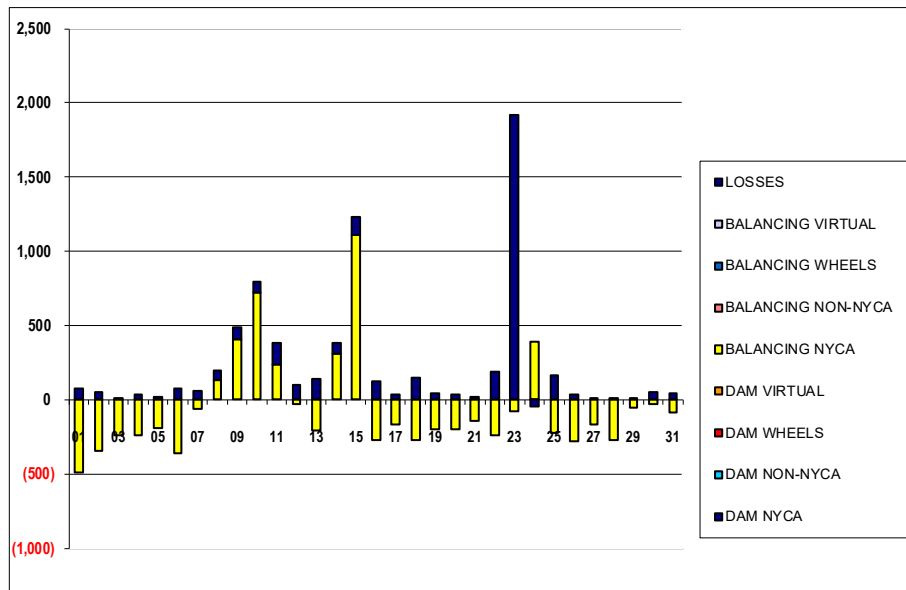
	MONDAY	TUESDAY	WEDNESDAY	THURSDAY	FRIDAY	SATURDAY	SUNDAY
				1	2	3	4
DAM NYCA				0	0	0	0
DAM NON-NYCA				0	0	0	0
DAM WHEELS				0	0	0	0
DAM VIRTUAL				0	0	0	0
BALANCING NYCA				(415)	(293)	(238)	(204)
BALANCING NON-NYCA				0	0	0	0
BALANCING WHEELS				0	0	0	0
BALANCING VIRTUAL				0	0	0	0
	5	6	7	8	9	10	11
DAM NYCA	0	0	0	0	0	0	0
DAM NON-NYCA	0	0	0	0	0	0	0
DAM WHEELS	0	0	0	0	0	0	0
DAM VIRTUAL	0	0	0	0	0	0	0
BALANCING NYCA	(178)	(287)	(4)	196	489	793	380
BALANCING NON-NYCA	0	0	0	0	0	0	0
BALANCING WHEELS	0	0	0	0	0	0	0
BALANCING VIRTUAL	0	0	0	0	0	0	0
	12	13	14	15	16	17	18
DAM NYCA	0	0	0	0	0	0	0
DAM NON-NYCA	0	0	0	0	0	0	0
DAM WHEELS	0	0	0	0	0	0	0
DAM VIRTUAL	0	0	0	0	0	0	0
BALANCING NYCA	77	(68)	381	1,231	(149)	(129)	(123)
BALANCING NON-NYCA	0	0	0	0	0	0	0
BALANCING WHEELS	0	0	0	0	0	0	0
BALANCING VIRTUAL	0	0	0	0	0	0	0
	19	20	21	22	23	24	25
DAM NYCA	0	0	0	0	0	0	0
DAM NON-NYCA	0	0	0	0	0	0	0
DAM WHEELS	0	0	0	0	0	0	0
DAM VIRTUAL	0	0	0	0	0	0	0
BALANCING NYCA	(157)	(169)	(121)	(57)	1,838	403	(54)
BALANCING NON-NYCA	0	0	0	0	0	(61)	0
BALANCING WHEELS	0	0	0	0	0	0	0
BALANCING VIRTUAL	0	0	0	0	0	0	0
	26	27	28	29	30	31	
DAM NYCA	0	0	0	0	0	0	
DAM NON-NYCA	0	0	0	0	0	0	
DAM WHEELS	0	0	0	0	0	0	
DAM VIRTUAL	0	0	0	0	0	0	
BALANCING NYCA	(247)	(156)	(266)	(53)	21	(45)	
BALANCING NON-NYCA	0	0	0	0	0	0	
BALANCING WHEELS	0	0	0	0	0	0	
BALANCING VIRTUAL	0	0	0	0	0	0	



SETTLEMENTS REPORT
December 2022 Settlement Adjustment
May 5, 2023

Settlement Adjustment – Market Withdrawals Delta Analysis

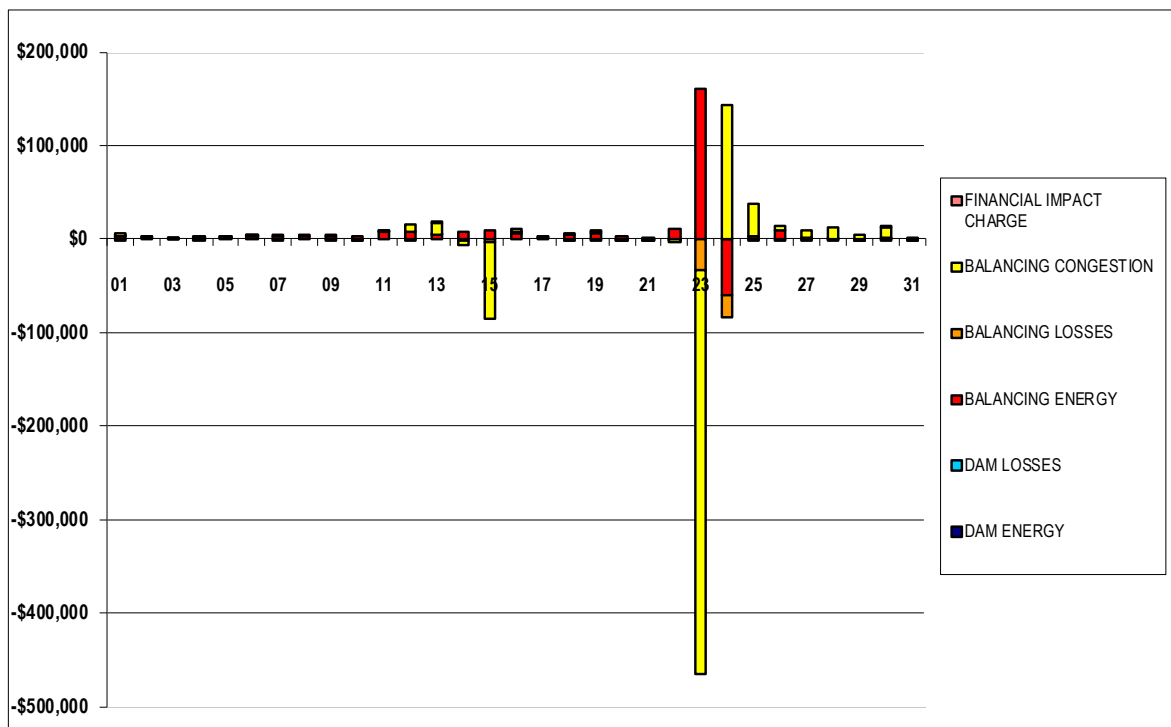
	MONDAY	TUESDAY	WEDNESDAY	THURSDAY	FRIDAY	SATURDAY	SUNDAY
				1	2	3	4
DAM NYCA				0	0	0	0
DAM NON-NYCA				0	0	0	0
DAM WHEELS				0	0	0	0
DAM VIRTUAL				0	0	0	0
BALANCING NYCA				(490)	(345)	(243)	(242)
BALANCING NON-NYCA				0	0	0	0
BALANCING WHEELS				0	0	0	0
BALANCING VIRTUAL				0	0	0	0
UFE/LOSSES				75	52	5	37
	5	6	7	8	9	10	11
DAM NYCA	0	0	0	0	0	0	0
DAM NON-NYCA	0	0	0	0	0	0	0
DAM WHEELS	0	0	0	0	0	0	0
DAM VIRTUAL	0	0	0	0	0	0	0
BALANCING NYCA	(196)	(362)	(65)	134	408	722	236
BALANCING NON-NYCA	0	0	0	0	0	0	0
BALANCING WHEELS	0	0	0	0	0	0	0
BALANCING VIRTUAL	0	0	0	0	0	0	0
UFE/LOSSES	18	75	62	62	81	71	144
	12	13	14	15	16	17	18
DAM NYCA	0	0	0	0	0	0	0
DAM NON-NYCA	0	0	0	0	0	0	0
DAM WHEELS	0	0	0	0	0	0	0
DAM VIRTUAL	0	0	0	0	0	0	0
BALANCING NYCA	(26)	(208)	313	1,111	(275)	(164)	(270)
BALANCING NON-NYCA	0	0	0	0	0	0	0
BALANCING WHEELS	0	0	0	0	0	0	0
BALANCING VIRTUAL	0	0	0	0	0	0	0
UFE/LOSSES	103	140	68	120	126	36	147
	19	20	21	22	23	24	25
DAM NYCA	0	0	0	0	0	0	0
DAM NON-NYCA	0	0	0	0	0	0	0
DAM WHEELS	0	0	0	0	0	0	0
DAM VIRTUAL	0	0	0	0	0	0	0
BALANCING NYCA	(203)	(200)	(143)	(242)	(79)	392	(221)
BALANCING NON-NYCA	0	0	0	0	0	0	0
BALANCING WHEELS	0	0	0	0	0	0	0
BALANCING VIRTUAL	0	0	0	0	0	0	0
UFE/LOSSES	47	31	22	185	1,917	(50)	167
	26	27	28	29	30	31	
DAM NYCA	0	0	0	0	0	0	
DAM NON-NYCA	0	0	0	0	0	0	
DAM WHEELS	0	0	0	0	0	0	
DAM VIRTUAL	0	0	0	0	0	0	
BALANCING NYCA	(284)	(169)	(270)	(54)	(33)	(87)	
BALANCING NON-NYCA	0	0	0	0	0	0	
BALANCING WHEELS	0	0	0	0	0	0	
BALANCING VIRTUAL	0	0	0	0	0	0	
UFE/LOSSES	37	13	4	1	54	43	



SETTLEMENTS REPORT
December 2022 Settlement Adjustment
May 5, 2023

Settlement Adjustment – Market Residuals Delta Analysis

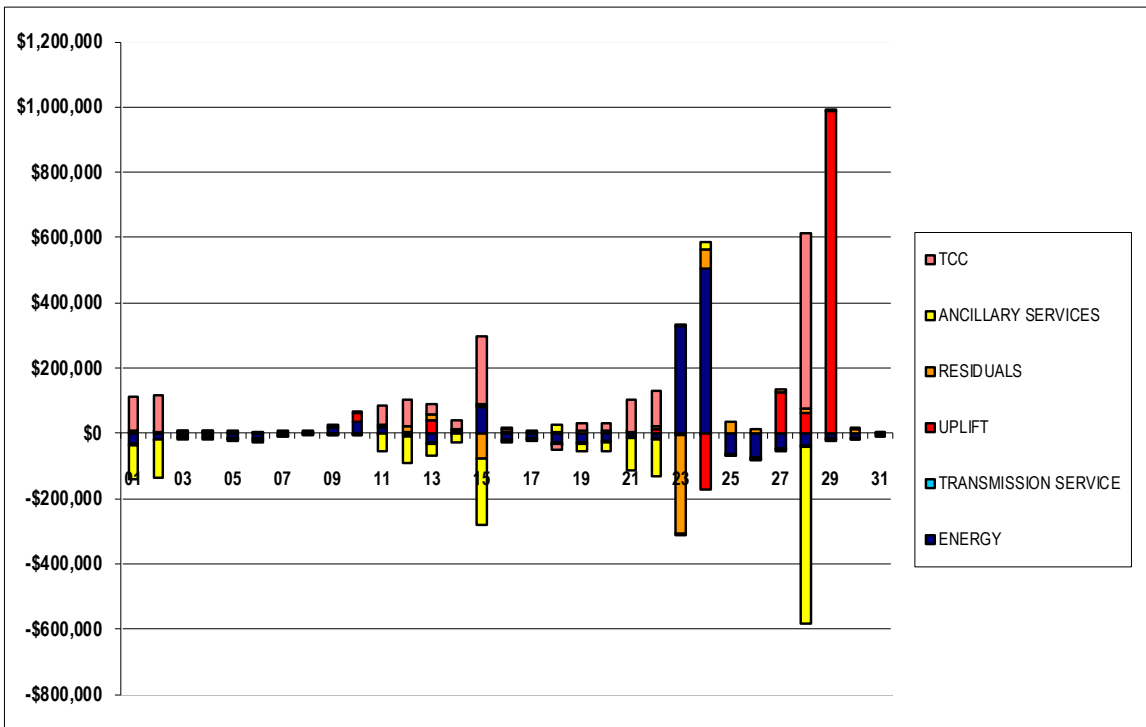
	MONDAY	TUESDAY	WEDNESDAY	THURSDAY	FRIDAY	SATURDAY	SUNDAY
				1	2	3	4
DAM ENERGY				\$0.00	\$0.01	\$0.00	\$0.00
DAM LOSSES				\$0.00	\$0.00	\$0.00	\$0.00
BALANCING ENERGY				\$2,340.75	\$1,222.83	\$132.61	\$1,371.45
BALANCING LOSSES				\$114.41	\$184.97	\$228.66	\$197.69
BALANCING CONGESTION				\$3,935.26	\$1,076.43	\$1,062.68	(\$194.03)
FINANCIAL IMPACT CHARGE				(\$0.08)	\$0.00	\$0.00	\$0.00
	5	6	7	8	9	10	11
DAM ENERGY	\$0.00	\$0.00	\$0.00	\$0.00	(\$0.01)	\$0.00	\$0.00
DAM LOSSES	\$0.00	\$0.00	(\$0.01)	\$0.00	\$0.00	\$0.00	\$0.01
BALANCING ENERGY	\$776.46	\$3,276.75	\$2,215.75	\$2,392.63	\$3,345.31	\$2,583.63	\$7,849.40
BALANCING LOSSES	\$111.59	\$285.67	\$327.49	\$294.47	(\$24.24)	(\$160.22)	\$27.37
BALANCING CONGESTION	\$618.78	\$176.97	(\$0.01)	\$0.01	\$167.35	(\$3.58)	\$244.83
FINANCIAL IMPACT CHARGE	\$0.00	\$0.00	\$0.00	\$0.00	\$0.00	\$0.00	\$0.00
	12	13	14	15	16	17	18
DAM ENERGY	\$0.00	\$0.00	\$0.00	\$0.00	\$0.00	\$0.00	\$0.00
DAM LOSSES	\$0.00	\$0.00	\$0.00	\$0.01	\$0.00	\$0.00	\$0.00
BALANCING ENERGY	\$7,501.94	\$4,804.72	\$8,093.90	\$9,120.69	\$6,624.34	\$2,000.13	\$4,468.06
BALANCING LOSSES	(\$567.67)	\$50.61	(\$1,640.47)	(\$3,436.30)	\$518.23	\$18.75	(\$193.01)
BALANCING CONGESTION	\$8,684.90	\$11,799.22	(\$4,591.16)	(\$81,302.18)	\$2,897.46	\$146.07	\$1,560.18
FINANCIAL IMPACT CHARGE	\$0.00	\$0.02	\$0.00	\$0.00	\$0.00	\$0.00	(\$0.05)
	19	20	21	22	23	24	25
DAM ENERGY	\$0.00	\$0.00	\$0.01	\$0.00	\$0.00	\$0.01	\$0.00
DAM LOSSES	(\$0.01)	\$0.00	\$0.00	\$0.01	\$0.00	\$0.00	\$0.00
BALANCING ENERGY	\$6,768.67	\$3,454.05	\$1,458.40	\$11,256.80	\$160,678.05	(\$59,390.48)	\$2,238.79
BALANCING LOSSES	(\$271.49)	(\$113.55)	(\$106.92)	(\$325.76)	(\$32,835.13)	(\$24,141.16)	(\$290.18)
BALANCING CONGESTION	\$125.39	(\$2,009.28)	(\$361.73)	(\$2,345.44)	(\$432,782.38)	\$143,450.46	\$34,714.28
FINANCIAL IMPACT CHARGE	\$2,779.27	\$0.00	\$0.00	(\$0.04)	(\$0.02)	\$0.00	\$0.00
	26	27	28	29	30	31	
DAM ENERGY	\$0.00	\$0.01	\$0.01	\$0.00	(\$0.01)	\$0.00	
DAM LOSSES	\$0.00	\$0.00	(\$0.01)	\$0.00	\$0.01	\$0.00	
BALANCING ENERGY	\$8,854.20	\$1,740.49	\$202.45	(\$107.46)	\$658.54	\$1,265.81	
BALANCING LOSSES	(\$1,642.52)	(\$703.24)	(\$9.39)	(\$27.61)	(\$197.44)	(\$225.74)	
BALANCING CONGESTION	\$4,568.57	\$8,136.60	\$12,090.64	\$4,761.46	\$11,117.87	(\$71.30)	
FINANCIAL IMPACT CHARGE	\$0.00	\$0.00	\$0.00	(\$0.11)	\$0.09	\$0.01	



SETTLEMENTS REPORT
December 2022 Settlement Adjustment
May 5, 2023

Settlement Adjustment – Market Costs Delta Analysis

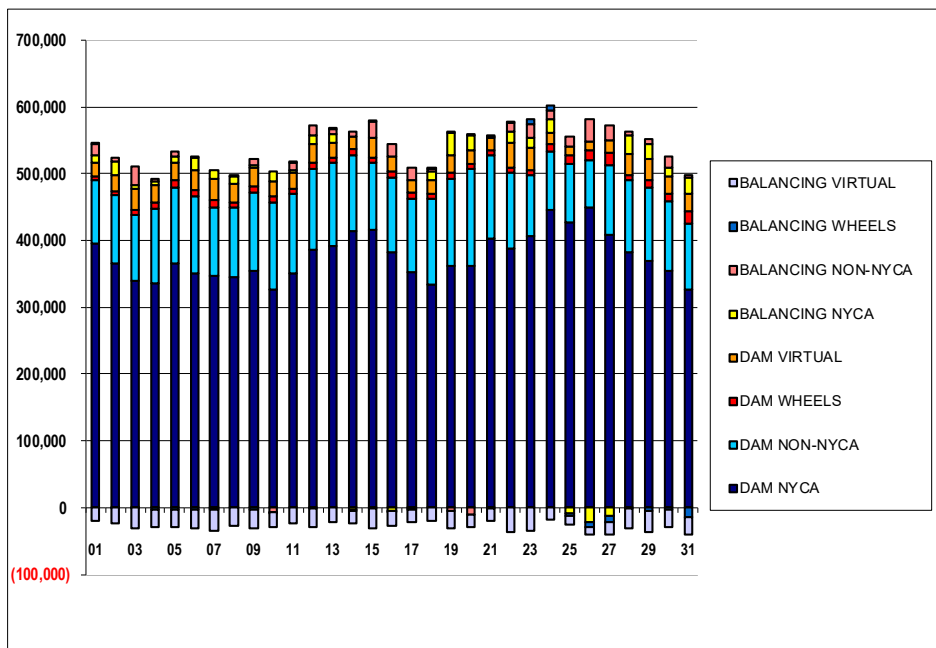
	MONDAY	TUESDAY	WEDNESDAY	THURSDAY	FRIDAY	SATURDAY	SUNDAY
				1	2	3	4
ENERGY				(\$32,023.34)	(\$17,486.40)	(\$9,981.53)	(\$10,063.46)
TRANSMISSION SERVICE				(\$3,311.34)	(\$3,447.22)	(\$2,759.05)	(\$3,839.79)
UPLIFT				\$2,107.45	\$1,634.40	\$3,339.49	\$3,512.97
RESIDUALS				\$6,390.34	\$2,484.24	\$1,423.95	\$1,375.11
ANCILLARY SERVICES				(\$104,616.56)	(\$116,589.00)	(\$2,761.12)	(\$3,075.78)
TCC				\$102,660.54	\$114,582.18	\$1,096.89	\$1,035.72
	5	6	7	8	9	10	11
ENERGY	(\$12,539.43)	(\$15,741.56)	(\$4,876.70)	\$5,207.14	\$17,016.36	\$35,410.50	\$15,883.88
TRANSMISSION SERVICE	(\$3,773.84)	(\$4,234.37)	(\$2,494.91)	(\$2,556.58)	(\$1,035.05)	(\$528.11)	(\$1,301.11)
UPLIFT	\$4,852.48	\$125.84	\$2,571.84	(\$0.01)	\$6,197.96	\$27,899.83	\$3,995.34
RESIDUALS	\$1,506.83	\$3,739.39	\$2,543.22	\$2,687.11	\$3,488.41	\$2,419.83	\$8,121.61
ANCILLARY SERVICES	(\$1,766.44)	(\$2,046.27)	(\$1,353.98)	(\$1,328.19)	(\$361.52)	(\$147.14)	(\$55,825.55)
TCC	(\$76.11)	(\$164.13)	\$0.00	\$0.00	(\$25.08)	(\$64.92)	\$55,275.81
	12	13	14	15	16	17	18
ENERGY	(\$5,365.55)	(\$28,269.80)	\$3,526.65	\$82,130.50	(\$19,562.64)	(\$15,005.16)	(\$28,738.49)
TRANSMISSION SERVICE	(\$2,395.25)	(\$2,451.44)	(\$1,008.15)	\$1,023.48	(\$2,455.61)	(\$2,486.87)	(\$2,657.18)
UPLIFT	\$4,370.61	\$39,874.98	\$5,692.73	\$5,019.62	\$2,369.35	(\$0.02)	(\$3.31)
RESIDUALS	\$15,619.17	\$16,654.57	\$1,862.27	(\$75,617.78)	\$10,040.03	\$2,164.95	\$5,835.18
ANCILLARY SERVICES	(\$84,429.54)	(\$35,740.43)	(\$27,285.47)	(\$207,348.03)	(\$1,338.73)	\$3,958.59	\$19,076.01
TCC	\$85,193.19	\$34,912.53	\$26,738.61	\$208,361.97	\$109.14	(\$5,318.49)	(\$20,837.28)
	19	20	21	22	23	24	25
ENERGY	(\$28,096.81)	(\$23,648.08)	(\$10,551.84)	(\$16,634.75)	\$327,041.01	\$503,380.06	(\$62,231.32)
TRANSMISSION SERVICE	(\$5,130.09)	(\$2,670.69)	(\$2,549.43)	(\$3,054.42)	(\$4,607.51)	(\$1,180.94)	(\$2,943.54)
UPLIFT	(\$0.26)	\$5,500.45	\$2,156.29	\$14,445.59	\$1,568.77	(\$169,574.90)	\$0.24
RESIDUALS	\$9,401.83	\$1,331.22	\$989.76	\$8,585.57	(\$304,939.48)	\$59,918.83	\$36,662.89
ANCILLARY SERVICES	(\$22,299.04)	(\$26,744.92)	(\$100,191.13)	(\$110,688.15)	(\$2,106.16)	\$22,357.33	(\$2,256.56)
TCC	\$20,421.96	\$25,337.97	\$98,677.80	\$108,813.36	\$0.00	\$0.00	\$0.00
	26	27	28	29	30	31	
ENERGY	(\$72,567.81)	(\$47,245.81)	(\$39,104.58)	(\$15,952.73)	(\$13,728.70)	(\$3,467.19)	
TRANSMISSION SERVICE	(\$5,229.27)	(\$3,524.00)	(\$2,663.11)	(\$2,320.07)	(\$1,906.46)	(\$2,605.66)	
UPLIFT	(\$114.88)	\$124,379.86	\$61,352.55	\$989,877.34	\$0.00	\$4.38	
RESIDUALS	\$11,780.25	\$9,173.86	\$12,283.70	\$4,626.28	\$11,579.06	\$968.78	
ANCILLARY SERVICES	(\$3,287.08)	(\$2,467.01)	(\$543,048.37)	(\$1,531.76)	(\$4,741.97)	\$2,785.68	
TCC	\$0.00	\$0.00	\$541,256.46	\$0.00	\$3,706.35	(\$4,262.49)	



SETTLEMENTS REPORT
December 2022 Settlement Adjustment
May 5, 2023

Initial Settlement – Market Supply Analysis

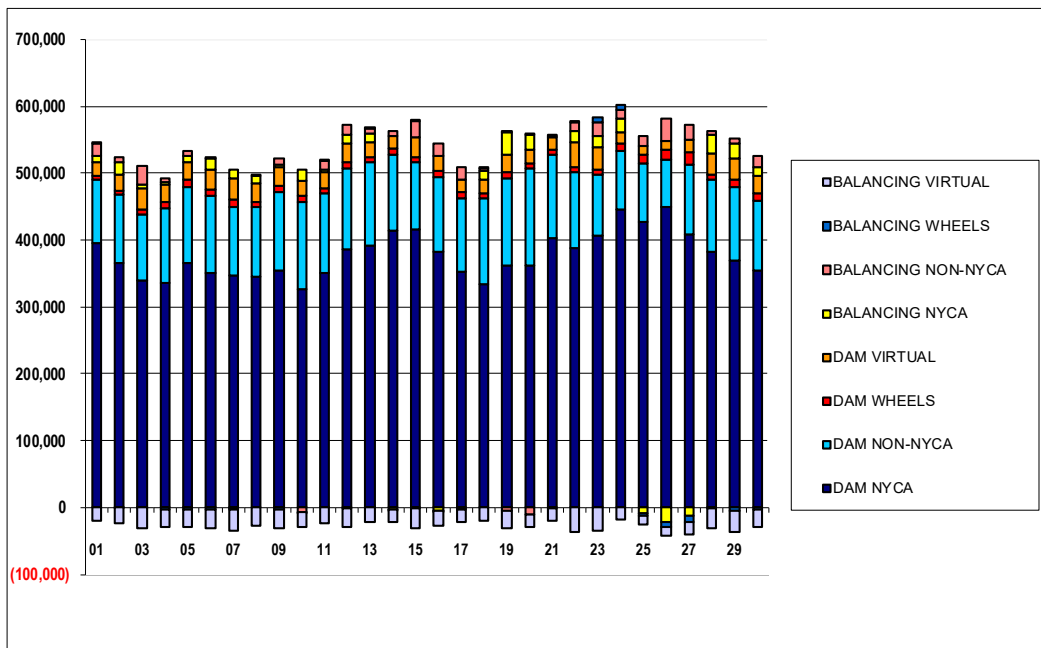
	MONDAY	TUESDAY	WEDNESDAY	THURSDAY	FRIDAY	SATURDAY	SUNDAY
				1	2	3	4
DAM NYCA				396,291	365,446	340,547	335,236
DAM NON-NYCA				93,336	101,766	98,250	112,176
DAM WHEELS				7,200	7,350	7,241	9,055
DAM VIRTUAL				19,484	23,835	31,024	26,589
BALANCING NYCA				10,631	19,226	6,793	4,678
BALANCING NON-NYCA				18,344	7,205	27,519	4,460
BALANCING WHEELS				300	(75)	(41)	(3,103)
BALANCING VIRTUAL				(19,484)	(23,835)	(31,024)	(26,589)
	5	6	7	8	9	10	11
DAM NYCA	365,960	350,061	346,956	344,592	354,744	326,831	351,165
DAM NON-NYCA	113,973	116,101	103,160	105,367	117,117	130,741	119,041
DAM WHEELS	10,037	9,833	10,400	7,440	9,872	8,695	7,805
DAM VIRTUAL	26,473	28,490	32,204	27,262	27,800	22,308	22,934
BALANCING NYCA	8,728	18,827	12,475	10,901	3,462	15,532	4,618
BALANCING NON-NYCA	7,985	1,492	(238)	3,027	9,244	(6,609)	11,536
BALANCING WHEELS	(2,540)	(2,149)	(3,050)	0	(2,432)	(845)	152
BALANCING VIRTUAL	(26,473)	(28,490)	(32,204)	(27,262)	(27,800)	(22,308)	(22,934)
	12	13	14	15	16	17	18
DAM NYCA	385,755	392,286	413,501	415,896	383,055	352,115	334,166
DAM NON-NYCA	121,192	123,570	114,753	100,663	110,574	111,342	128,646
DAM WHEELS	9,583	7,895	8,050	7,280	10,135	8,800	7,455
DAM VIRTUAL	28,249	21,844	18,430	29,720	22,338	18,287	19,627
BALANCING NYCA	11,807	13,080	(3,890)	(1,474)	(3,977)	(1,691)	13,287
BALANCING NON-NYCA	16,503	8,078	8,001	25,000	18,024	18,327	4,529
BALANCING WHEELS	(1,687)	328	(284)	300	(610)	(1,318)	50
BALANCING VIRTUAL	(28,249)	(21,844)	(18,430)	(29,720)	(22,338)	(18,287)	(19,627)
	19	20	21	22	23	24	25
DAM NYCA	362,568	361,656	403,355	387,679	407,543	445,427	427,905
DAM NON-NYCA	130,301	144,749	124,739	113,796	89,814	87,173	86,458
DAM WHEELS	7,930	9,111	7,935	7,799	8,125	10,968	12,980
DAM VIRTUAL	26,431	19,150	17,187	36,576	33,905	17,645	12,857
BALANCING NYCA	33,738	22,733	(1,698)	18,018	14,875	19,993	(9,270)
BALANCING NON-NYCA	(5,031)	(10,435)	3,237	13,145	20,230	14,091	14,823
BALANCING WHEELS	1,461	1,112	985	663	7,327	6,431	(2,966)
BALANCING VIRTUAL	(26,431)	(19,150)	(17,187)	(36,576)	(33,905)	(17,645)	(12,857)
	26	27	28	29	30	31	
DAM NYCA	450,315	409,317	382,386	369,741	354,808	325,805	
DAM NON-NYCA	69,385	103,824	107,864	108,870	103,806	99,276	
DAM WHEELS	15,370	18,285	8,341	12,006	10,633	18,309	
DAM VIRTUAL	12,462	17,790	30,192	32,214	26,384	27,297	
BALANCING NYCA	(21,425)	(11,489)	28,933	21,505	13,930	22,740	
BALANCING NON-NYCA	34,251	22,312	5,217	8,453	15,892	4,406	
BALANCING WHEELS	(7,030)	(10,503)	(1,091)	(4,467)	(3,433)	(13,537)	
BALANCING VIRTUAL	(12,462)	(17,790)	(30,192)	(32,214)	(26,384)	(27,297)	



SETTLEMENTS REPORT
December 2022 Settlement Adjustment
May 5, 2023

4-Month Settlement Adjustment – Market Supply Analysis

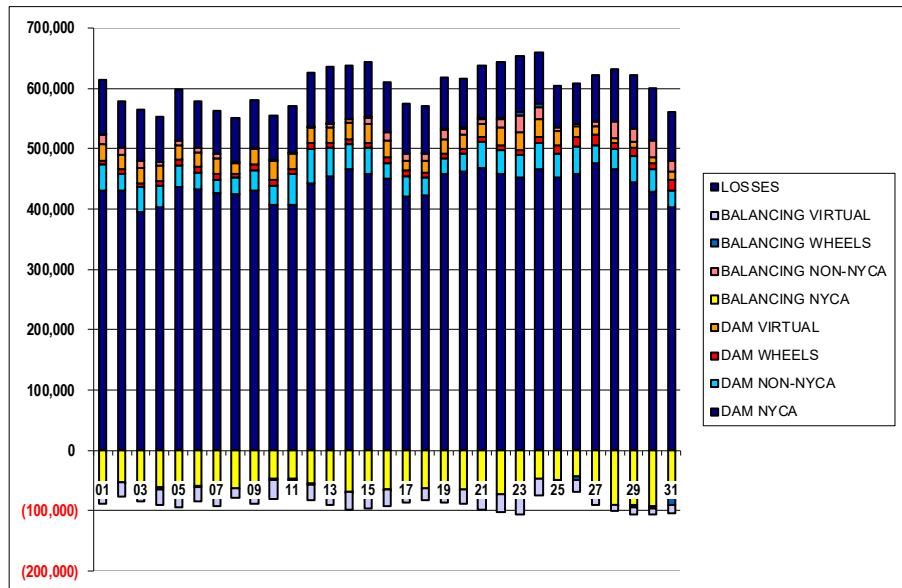
	MONDAY	TUESDAY	WEDNESDAY	THURSDAY	FRIDAY	SATURDAY	SUNDAY
				1	2	3	4
DAM NYCA				396,291	365,446	340,547	335,236
DAM NON-NYCA				93,336	101,766	98,250	112,176
DAM WHEELS				7,200	7,350	7,241	9,055
DAM VIRTUAL				19,484	23,835	31,024	26,589
BALANCING NYCA				10,216	18,933	6,555	4,473
BALANCING NON-NYCA				18,344	7,205	27,519	4,460
BALANCING WHEELS				300	(75)	(41)	(3,103)
BALANCING VIRTUAL				(19,484)	(23,835)	(31,024)	(26,589)
	5	6	7	8	9	10	11
DAM NYCA	365,960	350,061	346,956	344,592	354,744	326,831	351,165
DAM NON-NYCA	113,973	116,101	103,160	105,367	117,117	130,741	119,041
DAM WHEELS	10,037	9,833	10,400	7,440	9,872	8,695	7,805
DAM VIRTUAL	26,473	28,490	32,204	27,262	27,800	22,308	22,934
BALANCING NYCA	8,550	18,540	12,471	11,096	3,951	16,324	4,998
BALANCING NON-NYCA	7,985	1,492	(238)	3,027	9,244	(6,609)	11,536
BALANCING WHEELS	(2,540)	(2,149)	(3,050)	0	(2,432)	(845)	152
BALANCING VIRTUAL	(26,473)	(28,490)	(32,204)	(27,262)	(27,800)	(22,308)	(22,934)
	12	13	14	15	16	17	18
DAM NYCA	385,755	392,286	413,501	415,896	383,055	352,115	334,166
DAM NON-NYCA	121,192	123,570	114,753	100,663	110,574	111,342	128,646
DAM WHEELS	9,583	7,895	8,050	7,280	10,135	8,800	7,455
DAM VIRTUAL	28,249	21,844	18,430	29,720	22,338	18,287	19,627
BALANCING NYCA	11,884	13,012	(3,509)	(244)	(4,126)	(1,819)	13,163
BALANCING NON-NYCA	16,503	8,078	8,001	25,000	18,024	18,327	4,529
BALANCING WHEELS	(1,687)	328	(284)	300	(610)	(1,318)	50
BALANCING VIRTUAL	(28,249)	(21,844)	(18,430)	(29,720)	(22,338)	(18,287)	(19,627)
	19	20	21	22	23	24	25
DAM NYCA	362,568	361,656	403,355	387,679	407,543	445,427	427,905
DAM NON-NYCA	130,301	144,749	124,739	113,796	89,814	87,173	86,458
DAM WHEELS	7,930	9,111	7,935	7,799	8,125	10,968	12,980
DAM VIRTUAL	26,431	19,150	17,187	36,576	33,905	17,645	12,857
BALANCING NYCA	33,582	22,564	(1,819)	17,961	16,713	20,395	(9,325)
BALANCING NON-NYCA	(5,031)	(10,435)	3,237	13,145	20,230	14,030	14,823
BALANCING WHEELS	1,461	1,112	985	663	7,327	6,431	(2,966)
BALANCING VIRTUAL	(26,431)	(19,150)	(17,187)	(36,576)	(33,905)	(17,645)	(12,857)
	26	27	28	29	30	31	
DAM NYCA	450,315	409,317	382,386	369,741	354,808	325,805	
DAM NON-NYCA	69,385	103,824	107,864	108,870	103,806	99,276	
DAM WHEELS	15,370	18,285	8,341	12,006	10,633	18,309	
DAM VIRTUAL	12,462	17,790	30,192	32,214	26,384	27,297	
BALANCING NYCA	(21,672)	(11,645)	28,667	21,453	13,951	22,695	
BALANCING NON-NYCA	34,251	22,312	5,217	8,453	15,892	4,406	
BALANCING WHEELS	(7,030)	(10,503)	(1,091)	(4,467)	(3,433)	(13,537)	
BALANCING VIRTUAL	(12,462)	(17,790)	(30,192)	(32,214)	(26,384)	(27,297)	



SETTLEMENTS REPORT
December 2022 Settlement Adjustment
May 5, 2023

Initial Settlement – Market Withdrawals Analysis

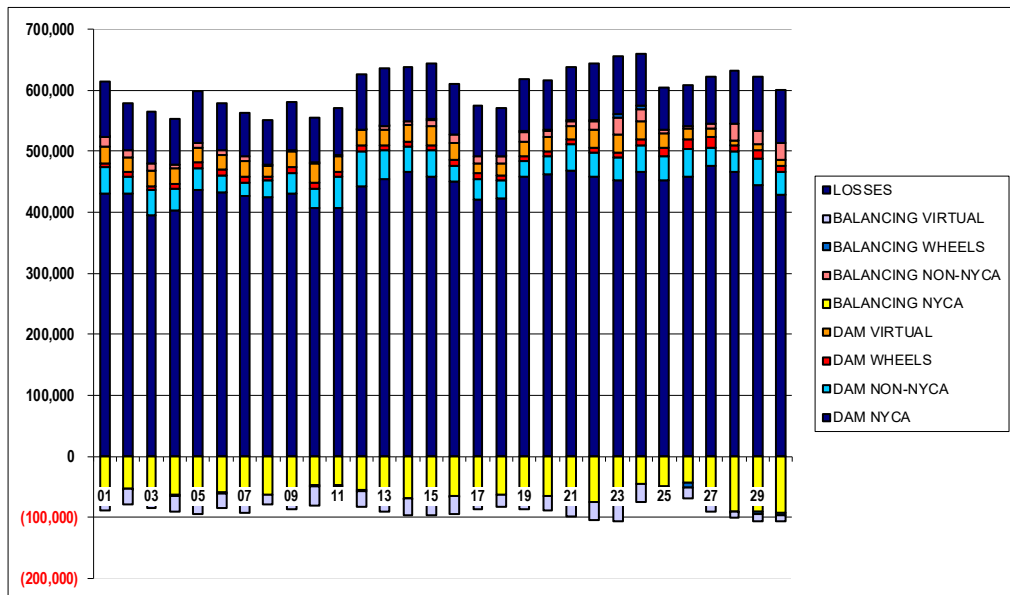
	MONDAY	TUESDAY	WEDNESDAY	THURSDAY	FRIDAY	SATURDAY	SUNDAY
				1	2	3	4
DAM NYCA				430,243	430,285	394,994	402,327
DAM NON-NYCA				42,773	27,876	40,796	35,410
DAM WHEELS				7,200	7,350	7,241	9,055
DAM VIRTUAL				27,539	24,373	23,934	25,679
BALANCING NYCA				(59,770)	(52,789)	(60,073)	(61,547)
BALANCING NON-NYCA				15,875	12,037	12,656	5,992
BALANCING WHEELS				300	(75)	(41)	(3,103)
BALANCING VIRTUAL				(27,539)	(24,373)	(23,934)	(25,679)
UFE/LOSSES				89,481	76,233	84,737	74,367
	5	6	7	8	9	10	11
DAM NYCA	435,785	432,921	427,209	424,500	429,977	405,942	405,884
DAM NON-NYCA	35,327	27,975	20,681	26,724	34,926	32,975	52,288
DAM WHEELS	10,037	9,833	10,400	7,440	9,872	8,695	7,805
DAM VIRTUAL	24,271	23,733	25,884	16,745	25,177	31,606	28,544
BALANCING NYCA	(66,411)	(58,445)	(63,065)	(61,773)	(59,840)	(47,704)	(47,129)
BALANCING NON-NYCA	7,505	7,036	8,297	3,207	1,526	2,793	(2,499)
BALANCING WHEELS	(2,540)	(2,149)	(3,050)	0	(2,432)	(845)	152
BALANCING VIRTUAL	(24,271)	(23,733)	(25,884)	(16,745)	(25,177)	(31,606)	(26,544)
UFE/LOSSES	84,440	76,995	69,230	71,229	77,978	72,488	77,816
	12	13	14	15	16	17	18
DAM NYCA	442,864	454,245	465,230	457,860	450,002	421,004	422,577
DAM NON-NYCA	57,184	46,389	41,307	43,901	25,647	33,554	30,382
DAM WHEELS	9,583	7,895	8,050	7,280	10,135	8,800	7,455
DAM VIRTUAL	24,950	26,126	28,890	31,833	28,248	16,361	19,330
BALANCING NYCA	(55,106)	(63,750)	(67,984)	(64,799)	(64,197)	(69,272)	(62,935)
BALANCING NON-NYCA	421	5,752	6,171	10,684	12,494	11,005	11,685
BALANCING WHEELS	(1,687)	328	(284)	300	(610)	(1,318)	50
BALANCING VIRTUAL	(24,950)	(26,126)	(28,890)	(31,833)	(28,248)	(16,361)	(19,330)
UFE/LOSSES	89,894	94,379	87,640	92,438	83,731	83,802	78,919
	19	20	21	22	23	24	25
DAM NYCA	457,488	461,395	467,258	457,900	451,810	465,581	452,224
DAM NON-NYCA	25,848	29,798	44,583	39,111	36,944	43,314	39,882
DAM WHEELS	7,930	9,111	7,935	7,799	8,125	10,968	12,980
DAM VIRTUAL	24,674	22,817	21,921	29,590	29,532	28,846	23,530
BALANCING NYCA	(61,963)	(64,667)	(76,599)	(73,320)	(76,298)	(45,996)	(48,152)
BALANCING NON-NYCA	16,029	10,316	7,173	14,864	27,515	20,004	6,738
BALANCING WHEELS	1,461	1,112	985	663	7,327	6,431	(2,966)
BALANCING VIRTUAL	(24,674)	(22,817)	(21,921)	(29,590)	(29,532)	(28,846)	(23,530)
UFE/LOSSES	84,175	81,861	87,218	94,083	92,491	83,781	69,223
	26	27	28	29	30	31	
DAM NYCA	457,489	476,043	465,517	444,919	429,083	402,009	
DAM NON-NYCA	46,274	29,494	34,516	43,609	36,332	28,552	
DAM WHEELS	15,370	18,285	8,341	12,006	10,633	18,309	
DAM VIRTUAL	18,104	13,931	9,184	11,190	10,100	13,291	
BALANCING NYCA	(42,690)	(65,021)	(89,576)	(90,200)	(91,714)	(76,356)	
BALANCING NON-NYCA	3,566	6,173	27,761	20,997	26,554	17,679	
BALANCING WHEELS	(7,030)	(10,503)	(1,091)	(4,467)	(3,433)	(13,537)	
BALANCING VIRTUAL	(18,104)	(13,931)	(9,184)	(11,190)	(10,100)	(13,291)	
UFE/LOSSES	67,887	77,276	86,180	89,245	88,182	80,343	



SETTLEMENTS REPORT
December 2022 Settlement Adjustment
May 5, 2023

4-Month Settlement Adjustment – Market Withdrawals Analysis

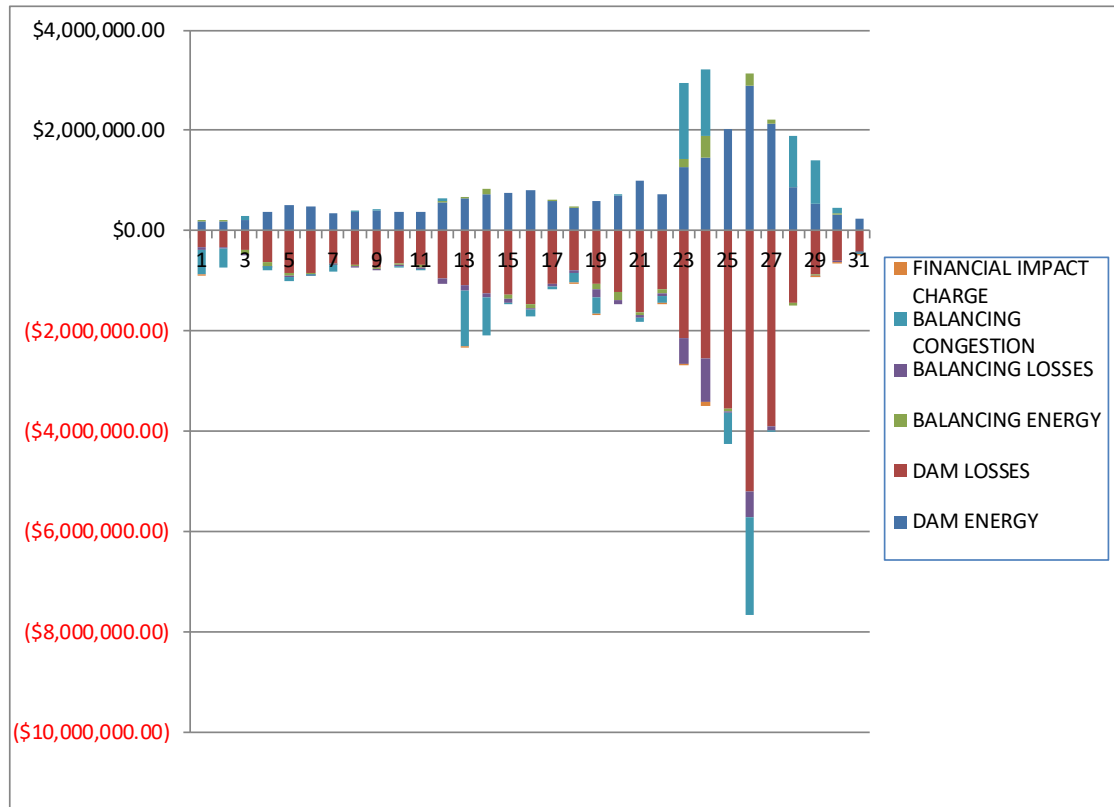
	MONDAY	TUESDAY	WEDNESDAY	THURSDAY	FRIDAY	SATURDAY	SUNDAY
				1	2	3	4
DAM NYCA				430,243	430,285	394,994	402,327
DAM NON-NYCA				42,773	27,876	40,796	35,410
DAM WHEELS				7,200	7,350	7,241	9,055
DAM VIRTUAL				27,539	24,373	23,934	25,679
BALANCING NYCA				(60,260)	(53,133)	(60,316)	(61,789)
BALANCING NON-NYCA				15,875	12,037	12,656	5,992
BALANCING WHEELS				300	(75)	(41)	(3,103)
BALANCING VIRTUAL				(27,539)	(24,373)	(23,934)	(25,679)
UFELOSSES				89,557	76,285	84,742	74,404
	5	6	7	8	9	10	11
DAM NYCA	435,785	432,921	427,209	424,500	429,977	405,942	405,884
DAM NON-NYCA	35,327	27,975	20,681	26,724	34,926	32,975	52,288
DAM WHEELS	10,037	9,833	10,400	7,440	9,872	8,695	7,805
DAM VIRTUAL	24,271	23,733	25,884	16,745	25,177	31,606	26,544
BALANCING NYCA	(66,606)	(68,807)	(63,130)	(61,640)	(59,432)	(46,982)	(46,893)
BALANCING NON-NYCA	7,505	7,036	8,297	3,207	1,526	2,793	(2,499)
BALANCING WHEELS	(2,540)	(2,149)	(3,050)	0	(2,432)	(845)	152
BALANCING VIRTUAL	(24,271)	(23,733)	(25,884)	(16,745)	(25,177)	(31,606)	(26,544)
UFELOSSES	84,457	77,070	69,292	71,291	78,059	72,559	77,960
	12	13	14	15	16	17	18
DAM NYCA	442,864	454,245	465,230	457,860	450,002	421,004	422,577
DAM NON-NYCA	57,184	46,389	41,307	43,901	25,647	33,554	30,382
DAM WHEELS	9,583	7,895	8,050	7,280	10,135	8,800	7,455
DAM VIRTUAL	24,950	26,126	28,890	31,833	28,248	16,361	19,330
BALANCING NYCA	(55,132)	(63,958)	(67,670)	(63,688)	(64,472)	(69,436)	(63,205)
BALANCING NON-NYCA	421	5,752	6,171	10,684	12,494	11,005	11,685
BALANCING WHEELS	(1,687)	328	(284)	300	(610)	(1,318)	50
BALANCING VIRTUAL	(24,950)	(26,126)	(28,890)	(31,833)	(28,248)	(16,361)	(19,330)
UFELOSSES	89,997	94,519	87,708	92,558	83,857	83,837	79,066
	19	20	21	22	23	24	25
DAM NYCA	457,488	461,395	467,258	457,900	451,810	465,581	452,224
DAM NON-NYCA	25,848	29,798	44,583	39,111	36,944	43,314	39,882
DAM WHEELS	7,930	9,111	7,935	7,799	8,125	10,968	12,980
DAM VIRTUAL	24,674	22,817	21,921	29,590	29,532	28,846	23,530
BALANCING NYCA	(62,167)	(64,867)	(76,742)	(73,562)	(76,376)	(45,605)	(48,373)
BALANCING NON-NYCA	16,029	10,316	7,173	14,864	27,515	20,004	6,738
BALANCING WHEELS	1,461	1,112	985	663	7,327	6,431	(2,966)
BALANCING VIRTUAL	(24,674)	(22,817)	(21,921)	(29,590)	(29,532)	(28,846)	(23,530)
UFELOSSES	84,222	81,892	87,240	94,268	94,408	83,731	69,390
	26	27	28	29	30	31	
DAM NYCA	457,489	476,043	465,517	444,919	429,083	402,009	
DAM NON-NYCA	46,274	29,494	34,516	43,609	36,332	28,552	
DAM WHEELS	15,370	18,285	8,341	12,006	10,633	18,309	
DAM VIRTUAL	18,104	13,931	9,184	11,190	10,100	13,291	
BALANCING NYCA	(42,974)	(65,190)	(89,846)	(90,253)	(91,747)	(76,443)	
BALANCING NON-NYCA	3,566	6,173	27,761	20,997	26,554	17,679	
BALANCING WHEELS	(7,030)	(10,503)	(1,091)	(4,467)	(3,433)	(13,537)	
BALANCING VIRTUAL	(18,104)	(13,931)	(9,184)	(11,190)	(10,100)	(13,291)	
UFELOSSES	67,924	77,288	86,185	89,246	88,235	80,386	



SETTLEMENTS REPORT
 December 2022 Settlement Adjustment
 May 5, 2023

Initial Settlement – Market Residuals Analysis

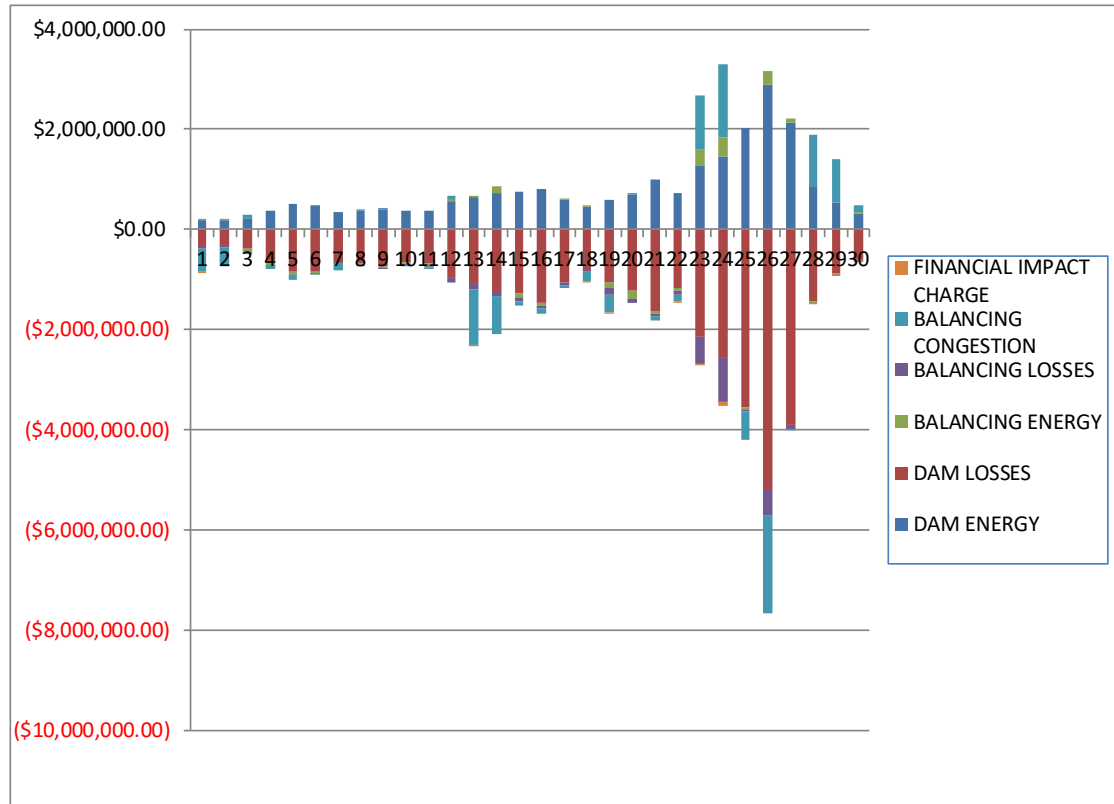
	MONDAY	TUESDAY	WEDNESDAY	THURSDAY	FRIDAY	SATURDAY	SUNDAY
				1	2	3	4
DAM ENERGY				\$186,906.88	\$195,542.44	\$222,064.39	\$362,563.48
DAM LOSSES				(\$335,996.72)	(\$323,400.61)	(\$377,831.65)	(\$615,361.45)
BALANCING ENERGY				\$22,024.43	\$2,236.95	(\$83,724.06)	(\$81,699.64)
BALANCING LOSSES				(\$35,411.94)	(\$36,596.67)	(\$18,860.23)	(\$10,223.86)
BALANCING CONGESTION				(\$484,263.64)	(\$365,600.39)	\$71,219.03	(\$71,110.33)
FINANCIAL IMPACT CHARGE				(\$70.26)	\$0.00	\$0.00	\$0.00
	5	6	7	8	9	10	11
DAM ENERGY	\$500,410.88	\$477,918.70	\$361,185.31	\$373,992.07	\$412,790.97	\$379,794.21	\$378,617.13
DAM LOSSES	(\$853,937.73)	(\$849,797.86)	(\$660,050.47)	(\$691,254.36)	(\$736,763.56)	(\$645,877.27)	(\$685,197.77)
BALANCING ENERGY	(\$41,133.10)	(\$28,395.31)	(\$2,284.15)	(\$4,798.56)	(\$23,575.16)	(\$38,705.49)	(\$50,178.80)
BALANCING LOSSES	(\$15,194.94)	(\$1,123.93)	(\$21,252.33)	(\$28,930.31)	(\$16,221.02)	(\$15,384.07)	(\$22,295.44)
BALANCING CONGESTION	(\$83,120.96)	(\$13,135.86)	(\$129,675.18)	\$628.61	\$11,312.97	(\$19,970.76)	(\$10,953.61)
FINANCIAL IMPACT CHARGE	\$0.00	\$0.00	\$0.00	\$0.00	\$0.00	\$0.00	\$0.00
	12	13	14	15	16	17	18
DAM ENERGY	\$566,302.30	\$643,710.20	\$723,940.54	\$753,386.05	\$821,758.99	\$594,821.00	\$458,400.94
DAM LOSSES	(\$938,392.36)	(\$1,087,666.77)	(\$1,238,623.24)	(\$1,286,206.02)	(\$1,470,839.88)	(\$1,058,498.43)	(\$792,720.83)
BALANCING ENERGY	\$13,978.75	\$33,551.75	\$125,042.37	(\$71,760.55)	(\$65,987.77)	\$24,265.93	\$1,911.08
BALANCING LOSSES	(\$121,017.20)	(\$99,393.46)	(\$81,191.73)	(\$80,525.18)	(\$46,981.01)	(\$52,508.09)	(\$38,730.96)
BALANCING CONGESTION	\$74,022.77	(\$1,120,444.89)	(\$769,238.72)	(\$1,612.45)	(\$113,588.67)	(\$53,306.99)	(\$196,022.13)
FINANCIAL IMPACT CHARGE	\$0.00	(\$6,321.75)	\$0.00	\$0.00	\$0.00	\$0.00	(\$252.72)
	19	20	21	22	23	24	25
DAM ENERGY	\$603,899.25	\$710,853.51	\$996,773.29	\$732,010.27	\$1,270,645.76	\$1,461,511.27	\$2,037,302.06
DAM LOSSES	(\$1,046,263.50)	(\$1,230,532.42)	(\$1,625,560.29)	(\$1,167,940.88)	(\$2,128,026.02)	(\$2,549,115.56)	(\$3,552,791.72)
BALANCING ENERGY	(\$132,187.00)	(\$148,369.01)	(\$57,334.69)	(\$72,312.44)	\$165,927.33	\$428,662.43	(\$61,630.20)
BALANCING LOSSES	(\$142,607.24)	(\$96,540.75)	(\$55,617.72)	(\$70,338.01)	(\$517,924.37)	(\$866,321.40)	(\$17,609.05)
BALANCING CONGESTION	(\$327,326.43)	\$5,512.81	(\$81,803.14)	(\$123,309.10)	\$1,519,056.24	\$1,314,960.27	(\$609,880.74)
FINANCIAL IMPACT CHARGE	(\$3,020.40)	\$0.00	\$0.00	(\$16.01)	(\$48.54)	(\$75,532.15)	\$0.00
	26	27	28	29	30	31	
DAM ENERGY	\$2,887,400.61	\$2,144,997.51	\$861,796.26	\$538,015.74	\$334,665.53	\$235,635.16	
DAM LOSSES	(\$5,204,481.38)	(\$3,892,697.51)	(\$1,442,709.01)	(\$877,243.34)	(\$593,633.10)	(\$418,253.19)	
BALANCING ENERGY	\$254,440.40	\$69,984.67	(\$46,464.26)	(\$9,467.98)	\$1,613.86	(\$1,724.27)	
BALANCING LOSSES	(\$502,441.82)	(\$81,716.43)	\$6,780.65	(\$843.64)	(\$18,055.22)	(\$28,406.83)	
BALANCING CONGESTION	(\$1,956,808.06)	(\$39,153.10)	\$1,021,684.68	\$868,327.81	\$134,013.11	(\$11,825.58)	
FINANCIAL IMPACT CHARGE	\$0.00	\$0.00	\$0.00	(\$727.12)	(\$106.73)	(\$3.57)	



SETTLEMENTS REPORT
December 2022 Settlement Adjustment
May 5, 2023

4-Month Settlement Adjustment – Market Residuals Analysis

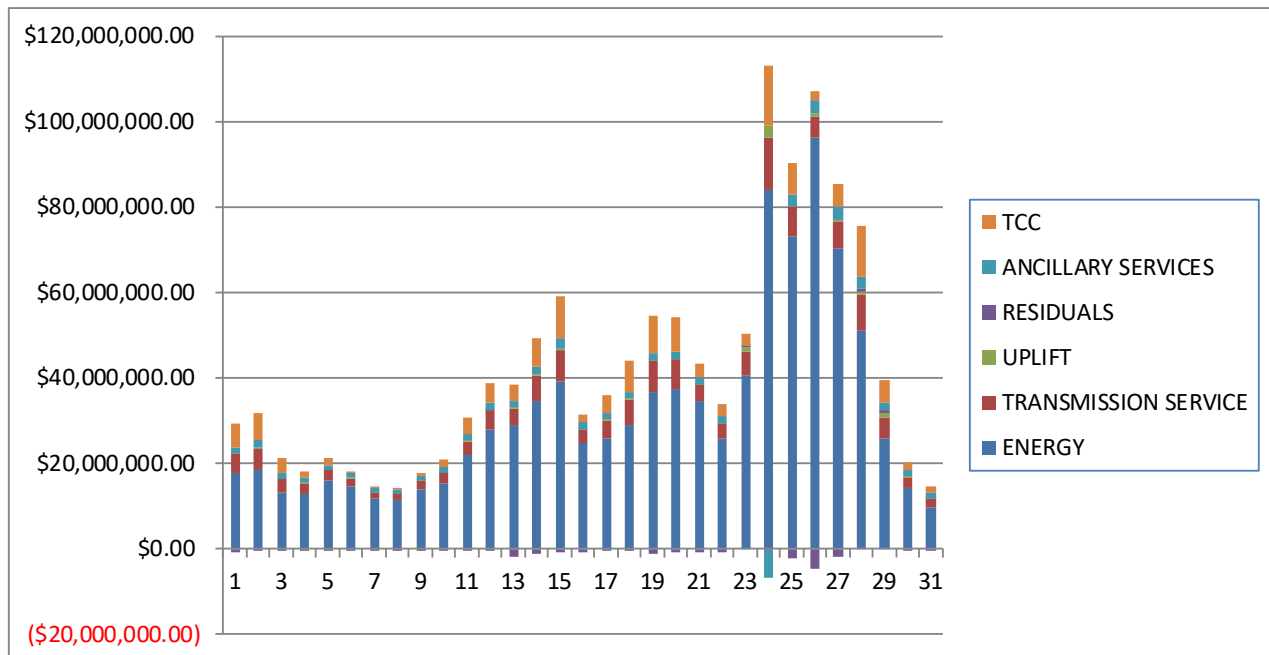
	MONDAY	TUESDAY	WEDNESDAY	THURSDAY	FRIDAY	SATURDAY	SUNDAY
				1	2	3	4
DAM ENERGY				\$186,906.88	\$195,542.45	\$222,064.39	\$362,563.48
DAM LOSSES				(\$335,996.72)	(\$323,400.61)	(\$377,831.65)	(\$615,361.45)
BALANCING ENERGY				\$24,365.18	\$3,459.78	(\$83,591.45)	(\$80,328.19)
BALANCING LOSSES				(\$35,297.53)	(\$36,411.70)	(\$18,631.57)	(\$10,026.17)
BALANCING CONGESTION				(\$480,328.38)	(\$364,523.96)	\$72,281.71	(\$71,304.36)
FINANCIAL IMPACT CHARGE				(\$70.34)	\$0.00	\$0.00	\$0.00
	5	6	7	8	9	10	11
DAM ENERGY	\$500,410.88	\$477,918.70	\$361,185.31	\$373,992.07	\$412,790.96	\$379,794.21	\$378,617.13
DAM LOSSES	(\$853,937.73)	(\$849,797.86)	(\$660,050.48)	(\$691,254.36)	(\$736,763.56)	(\$645,877.27)	(\$685,197.76)
BALANCING ENERGY	(\$40,356.64)	(\$25,118.56)	(\$68.40)	(\$2,405.93)	(\$20,229.85)	(\$36,121.86)	(\$42,329.40)
BALANCING LOSSES	(\$15,083.35)	(\$838.26)	(\$20,924.84)	(\$28,635.84)	(\$16,245.26)	(\$15,544.29)	(\$22,268.07)
BALANCING CONGESTION	(\$82,502.18)	(\$12,958.89)	(\$129,675.19)	\$628.62	\$11,480.32	(\$19,974.34)	(\$10,708.78)
FINANCIAL IMPACT CHARGE	\$0.00	\$0.00	\$0.00	\$0.00	\$0.00	\$0.00	\$0.00
	12	13	14	15	16	17	18
DAM ENERGY	\$566,302.30	\$643,710.20	\$723,940.54	\$753,386.05	\$821,758.99	\$594,821.00	\$458,400.94
DAM LOSSES	(\$938,392.36)	(\$1,087,666.77)	(\$1,238,623.24)	(\$1,286,206.01)	(\$1,470,839.88)	(\$1,058,498.43)	(\$792,720.83)
BALANCING ENERGY	\$21,480.69	\$38,356.47	\$133,136.27	(\$62,639.86)	(\$59,363.43)	\$26,266.06	\$6,379.14
BALANCING LOSSES	(\$121,584.87)	(\$99,342.85)	(\$82,832.20)	(\$83,961.48)	(\$46,462.78)	(\$52,489.34)	(\$38,923.97)
BALANCING CONGESTION	\$82,707.67	(\$1,108,645.67)	(\$773,829.88)	(\$82,914.63)	(\$110,691.21)	(\$53,160.92)	(\$194,461.95)
FINANCIAL IMPACT CHARGE	\$0.00	(\$6,321.73)	\$0.00	\$0.00	\$0.00	\$0.00	(\$252.77)
	19	20	21	22	23	24	25
DAM ENERGY	\$603,899.25	\$710,853.51	\$996,773.30	\$732,010.27	\$1,270,645.76	\$1,461,511.28	\$2,037,302.06
DAM LOSSES	(\$1,046,263.51)	(\$1,230,532.42)	(\$1,625,560.29)	(\$1,167,940.87)	(\$2,128,026.02)	(\$2,549,115.56)	(\$3,552,791.72)
BALANCING ENERGY	(\$125,418.33)	(\$144,914.96)	(\$55,876.29)	(\$61,055.64)	\$326,605.38	\$369,271.95	(\$59,391.41)
BALANCING LOSSES	(\$142,878.73)	(\$96,654.30)	(\$55,724.64)	(\$70,663.77)	(\$550,759.50)	(\$890,462.56)	(\$17,899.23)
BALANCING CONGESTION	(\$327,201.04)	\$3,503.53	(\$82,164.87)	(\$125,654.54)	\$1,086,273.86	\$1,458,410.73	(\$575,166.46)
FINANCIAL IMPACT CHARGE	(\$241.13)	\$0.00	\$0.00	(\$16.05)	(\$48.56)	(\$75,532.15)	\$0.00
	26	27	28	29	30	31	
DAM ENERGY	\$2,887,400.61	\$2,144,997.52	\$861,796.27	\$538,015.74	\$334,665.52	\$235,635.16	
DAM LOSSES	(\$5,204,481.38)	(\$3,892,697.51)	(\$1,442,709.02)	(\$877,243.34)	(\$593,633.09)	(\$418,253.19)	
BALANCING ENERGY	\$263,294.60	\$71,725.16	(\$46,261.81)	(\$9,575.44)	\$2,272.40	(\$458.46)	
BALANCING LOSSES	(\$504,084.34)	(\$82,419.67)	\$6,771.26	(\$871.25)	(\$18,252.66)	(\$28,632.57)	
BALANCING CONGESTION	(\$1,952,239.49)	(\$31,016.50)	\$1,033,775.32	\$873,089.27	\$145,130.98	(\$11,896.88)	
FINANCIAL IMPACT CHARGE	\$0.00	\$0.00	\$0.00	(\$727.23)	(\$106.64)	(\$3.56)	



SETTLEMENTS REPORT
December 2022 Settlement Adjustment
May 5, 2023

Initial Settlement – Market Costs Analysis

	MONDAY	TUESDAY	WEDNESDAY	THURSDAY	FRIDAY	SATURDAY	SUNDAY
				1	2	3	4
ENERGY				\$17,714,062.80	\$18,497,090.18	\$13,156,073.50	\$13,052,316.63
TRANSMISSION SERVICE				\$4,468,975.30	\$5,024,094.53	\$3,347,303.22	\$2,306,361.63
UPLIFT				\$173,992.18	\$269,029.84	\$32,148.43	\$177,015.16
RESIDUALS				(\$646,811.25)	(\$527,818.28)	(\$187,132.52)	(\$415,831.80)
ANCILLARY SERVICES				\$1,547,162.63	\$1,678,494.00	\$1,223,803.31	\$1,138,117.24
TCC				\$5,443,461.05	\$6,201,137.95	\$3,708,419.82	\$1,628,262.18
	5	6	7	8	9	10	11
ENERGY	\$16,011,874.81	\$14,678,950.63	\$11,788,843.21	\$11,376,173.21	\$14,026,671.81	\$15,457,563.72	\$21,868,148.41
TRANSMISSION SERVICE	\$2,374,054.07	\$1,821,106.08	\$1,407,330.72	\$1,394,290.69	\$1,849,501.74	\$2,341,331.74	\$3,430,993.16
UPLIFT	\$124,501.74	\$160,575.28	\$106,363.21	\$93,815.18	\$66,117.52	\$168,053.69	\$63,720.32
RESIDUALS	(\$492,975.85)	(\$414,534.26)	(\$452,076.82)	(\$350,362.55)	(\$352,455.80)	(\$340,143.38)	(\$390,008.49)
ANCILLARY SERVICES	\$1,204,768.58	\$1,160,630.62	\$1,108,560.36	\$1,083,596.57	\$1,155,598.61	\$1,173,118.68	\$1,393,843.15
TCC	\$1,410,326.48	\$459,420.98	\$76,632.40	\$66,101.68	\$597,301.48	\$1,647,526.65	\$3,953,072.18
	12	13	14	15	16	17	18
ENERGY	\$28,080,565.02	\$29,054,394.08	\$34,764,217.81	\$39,314,989.30	\$24,828,878.55	\$25,997,967.05	\$29,140,482.38
TRANSMISSION SERVICE	\$4,295,390.79	\$3,889,117.40	\$5,714,978.81	\$7,352,026.55	\$3,112,244.78	\$4,191,187.79	\$5,852,457.76
UPLIFT	\$250,411.12	\$131,056.96	\$536,422.54	\$227,362.24	\$147,951.41	\$50,327.31	\$320,969.52
RESIDUALS	(\$405,105.74)	(\$1,636,564.92)	(\$1,240,070.78)	(\$686,718.15)	(\$875,638.34)	(\$545,226.58)	(\$567,414.62)
ANCILLARY SERVICES	\$1,540,510.51	\$1,435,173.00	\$1,775,507.57	\$2,321,766.45	\$1,444,651.81	\$1,610,698.31	\$1,482,998.82
TCC	\$4,535,130.16	\$3,877,623.40	\$6,552,689.30	\$9,779,290.34	\$1,846,105.04	\$4,274,926.68	\$7,115,518.82
	19	20	21	22	23	24	25
ENERGY	\$36,582,559.29	\$37,472,436.52	\$34,599,778.90	\$25,793,702.74	\$40,681,353.76	\$83,859,164.38	\$73,137,253.77
TRANSMISSION SERVICE	\$7,383,123.77	\$6,839,318.87	\$3,753,200.51	\$3,622,518.58	\$5,514,212.64	\$12,205,888.20	\$6,930,727.56
UPLIFT	\$106,778.72	\$172,671.02	\$42,838.21	\$80,866.05	\$1,020,627.91	\$3,080,365.73	\$33,202.50
RESIDUALS	(\$1,047,505.32)	(\$759,075.86)	(\$823,542.55)	(\$701,906.17)	\$309,630.40	(\$285,835.14)	(\$2,204,609.65)
ANCILLARY SERVICES	\$1,785,043.38	\$1,784,807.57	\$1,809,442.98	\$1,525,359.52	\$1,119,912.07	(\$6,391,484.57)	\$2,684,103.74
TCC	\$8,740,266.84	\$7,785,582.70	\$3,027,072.81	\$2,844,875.01	\$2,624,880.77	\$13,778,433.53	\$7,513,466.99
	26	27	28	29	30	31	
ENERGY	\$96,139,285.94	\$70,315,265.72	\$50,915,339.63	\$25,925,053.57	\$14,229,360.93	\$9,846,536.37	
TRANSMISSION SERVICE	\$5,037,159.83	\$6,154,318.54	\$8,646,851.53	\$4,723,592.20	\$2,611,572.97	\$2,120,750.85	
UPLIFT	\$480,295.87	\$555,484.32	\$751,224.20	\$1,203,978.49	\$95,049.62	\$4,683.32	
RESIDUALS	(\$4,521,890.25)	(\$1,798,584.86)	\$401,088.32	\$518,061.47	(\$141,502.55)	(\$224,578.28)	
ANCILLARY SERVICES	\$3,344,257.08	\$3,107,186.99	\$3,009,845.40	\$1,901,857.14	\$1,467,552.39	\$1,217,961.46	
TCC	\$1,982,581.69	\$5,328,378.65	\$11,784,717.95	\$5,266,687.14	\$1,909,099.89	\$1,365,710.70	



SETTLEMENTS REPORT
December 2022 Settlement Adjustment
May 5, 2023

4-Month Settlement Adjustment – Market Costs Analysis

	MONDAY	TUESDAY	WEDNESDAY	THURSDAY	FRIDAY	SATURDAY	SUNDAY
				1	2	3	4
ENERGY				\$17,682,039.46	\$18,479,603.78	\$13,146,091.97	\$13,042,253.17
TRANSMISSION SERVICE				\$4,465,663.96	\$5,020,647.31	\$3,344,544.17	\$2,302,521.84
UPLIFT				\$176,099.63	\$270,664.24	\$35,487.92	\$180,528.13
RESIDUALS				(\$640,420.91)	(\$525,334.04)	(\$185,708.57)	(\$414,456.69)
ANCILLARY SERVICES				\$1,442,546.07	\$1,561,905.00	\$1,221,042.19	\$1,135,041.46
TCC				\$5,546,121.59	\$6,315,720.13	\$3,709,516.71	\$1,629,297.90
	5	6	7	8	9	10	11
ENERGY	\$15,999,335.38	\$14,663,209.07	\$11,783,966.51	\$11,381,380.35	\$14,043,688.17	\$15,492,974.22	\$21,884,032.29
TRANSMISSION SERVICE	\$2,370,280.23	\$1,816,871.71	\$1,404,835.81	\$1,391,734.11	\$1,848,466.69	\$2,340,803.63	\$3,429,692.05
UPLIFT	\$129,354.22	\$160,701.12	\$108,935.05	\$93,815.17	\$72,315.48	\$195,953.52	\$67,715.66
RESIDUALS	(\$491,469.02)	(\$410,794.87)	(\$449,533.60)	(\$347,675.44)	(\$348,967.39)	(\$337,723.55)	(\$381,886.88)
ANCILLARY SERVICES	\$1,203,002.14	\$1,158,584.35	\$1,107,206.38	\$1,082,268.38	\$1,155,237.09	\$1,172,971.54	\$1,338,017.60
TCC	\$1,410,250.37	\$459,256.85	\$76,632.40	\$66,101.68	\$597,276.40	\$1,647,461.73	\$4,008,347.99
	12	13	14	15	16	17	18
ENERGY	\$28,075,199.47	\$29,026,124.28	\$34,767,744.46	\$39,397,119.80	\$24,809,315.91	\$25,982,961.89	\$29,111,743.89
TRANSMISSION SERVICE	\$4,292,995.54	\$3,886,665.96	\$5,713,970.66	\$7,353,050.03	\$3,109,789.17	\$4,188,700.92	\$5,849,800.58
UPLIFT	\$254,781.73	\$170,931.94	\$542,115.27	\$232,381.86	\$150,320.76	\$50,327.29	\$320,966.21
RESIDUALS	(\$389,486.57)	(\$1,619,910.35)	(\$1,238,208.51)	(\$762,335.93)	(\$865,598.31)	(\$543,061.63)	(\$561,579.44)
ANCILLARY SERVICES	\$1,456,080.97	\$1,399,432.57	\$1,748,222.10	\$2,114,418.42	\$1,443,313.08	\$1,614,656.90	\$1,502,074.83
TCC	\$4,620,323.35	\$3,912,535.93	\$6,579,427.91	\$9,987,652.31	\$1,846,214.18	\$4,269,608.19	\$7,094,681.54
	19	20	21	22	23	24	25
ENERGY	\$36,554,462.48	\$37,448,788.44	\$34,589,227.06	\$25,777,067.99	\$41,008,394.77	\$84,362,544.44	\$73,075,022.45
TRANSMISSION SERVICE	\$7,377,993.68	\$6,836,648.18	\$3,750,651.08	\$3,619,464.16	\$5,509,605.13	\$12,204,707.26	\$6,927,784.02
UPLIFT	\$106,778.46	\$178,171.47	\$44,994.50	\$95,311.64	\$1,022,196.68	\$2,910,790.83	\$33,202.74
RESIDUALS	(\$1,038,103.49)	(\$757,744.64)	(\$822,552.79)	(\$693,320.60)	\$4,690.92	(\$225,916.31)	(\$2,167,946.76)
ANCILLARY SERVICES	\$1,762,744.34	\$1,758,062.65	\$1,709,251.85	\$1,414,671.37	\$109,805.91	(\$6,369,127.24)	\$2,681,847.18
TCC	\$8,760,688.80	\$7,810,920.67	\$3,125,750.61	\$2,953,688.37	\$2,624,880.77	\$13,778,433.53	\$7,513,466.99
	26	27	28	29	30	31	
ENERGY	\$96,066,718.13	\$70,268,019.91	\$50,876,235.05	\$25,909,100.84	\$14,215,632.23	\$9,843,069.18	
TRANSMISSION SERVICE	\$5,031,930.56	\$6,150,794.54	\$8,644,188.42	\$4,721,272.13	\$2,609,666.51	\$2,118,145.19	
UPLIFT	\$480,180.99	\$679,864.18	\$812,576.75	\$2,193,855.83	\$95,049.62	\$4,687.70	
RESIDUALS	(\$4,510,110.00)	(\$1,789,411.00)	\$413,372.02	\$522,687.75	(\$129,923.49)	(\$223,609.50)	
ANCILLARY SERVICES	\$3,340,970.00	\$3,104,719.98	\$2,466,797.03	\$1,900,325.38	\$1,462,810.42	\$1,220,747.14	
TCC	\$1,982,581.69	\$5,328,378.65	\$12,325,974.41	\$5,266,687.14	\$1,912,806.24	\$1,361,448.21	

