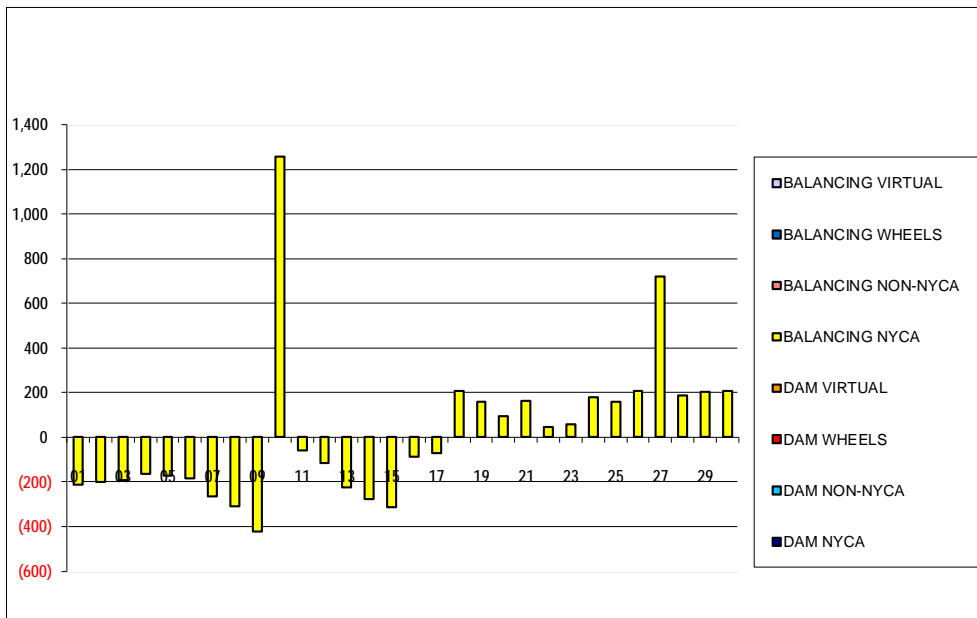


SETTLEMENTS REPORT
 September 2021 Settlement Adjustment
 February 7, 2022

Settlement Adjustment – Market Supply Delta Analysis

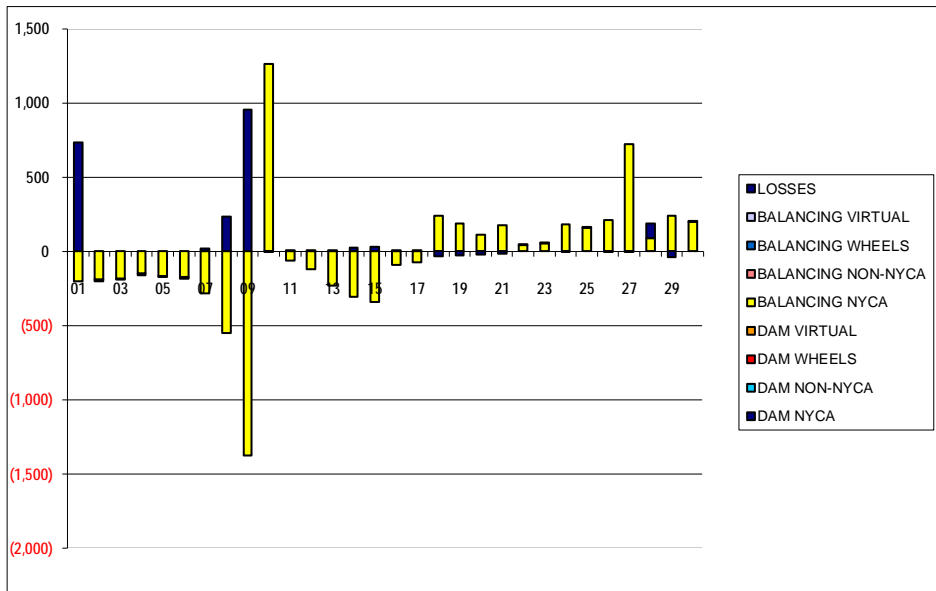
	MONDAY	TUESDAY	WEDNESDAY	THURSDAY	FRIDAY	SATURDAY	SUNDAY
			1	2	3	4	5
DAM NYCA			0	0	0	0	0
DAM NON-NYCA			0	0	0	0	0
DAM WHEELS			0	0	0	0	0
DAM VIRTUAL			0	0	0	0	0
BALANCING NYCA			(212)	(200)	(191)	(162)	(173)
BALANCING NON-NYCA			0	0	0	0	0
BALANCING WHEELS			0	0	0	0	0
BALANCING VIRTUAL			0	0	0	0	0
	6	7	8	9	10	11	12
DAM NYCA	0	0	0	0	0	0	0
DAM NON-NYCA	0	0	0	0	0	0	0
DAM WHEELS	0	0	0	0	0	0	0
DAM VIRTUAL	0	0	0	0	0	0	0
BALANCING NYCA	(185)	(264)	(311)	(423)	1,257	(60)	(114)
BALANCING NON-NYCA	0	0	0	0	0	0	0
BALANCING WHEELS	0	0	0	0	0	0	0
BALANCING VIRTUAL	0	0	0	0	0	0	0
	13	14	15	16	17	18	19
DAM NYCA	0	0	0	0	0	0	0
DAM NON-NYCA	0	0	0	0	0	0	0
DAM WHEELS	0	0	0	0	0	0	0
DAM VIRTUAL	0	0	0	0	0	0	0
BALANCING NYCA	(223)	(277)	(313)	(88)	(70)	207	160
BALANCING NON-NYCA	0	0	0	0	0	0	0
BALANCING WHEELS	0	0	0	0	0	0	0
BALANCING VIRTUAL	0	0	0	0	0	0	0
	20	21	22	23	24	25	26
DAM NYCA	0	0	0	0	0	0	0
DAM NON-NYCA	0	0	0	0	0	0	0
DAM WHEELS	0	0	0	0	0	0	0
DAM VIRTUAL	0	0	0	0	0	0	0
BALANCING NYCA	96	162	44	57	180	158	209
BALANCING NON-NYCA	0	0	0	0	0	0	0
BALANCING WHEELS	0	0	0	0	0	0	0
BALANCING VIRTUAL	0	0	0	0	0	0	0
	27	28	29	30			
DAM NYCA	0	0	0	0			
DAM NON-NYCA	0	0	0	0			
DAM WHEELS	0	0	0	0			
DAM VIRTUAL	0	0	0	0			
BALANCING NYCA	720	187	203	206			
BALANCING NON-NYCA	0	0	0	0			
BALANCING WHEELS	0	0	0	0			
BALANCING VIRTUAL	0	0	0	0			



SETTLEMENTS REPORT
 September 2021 Settlement Adjustment
 February 7, 2022

Settlement Adjustment – Market Withdrawals Delta Analysis

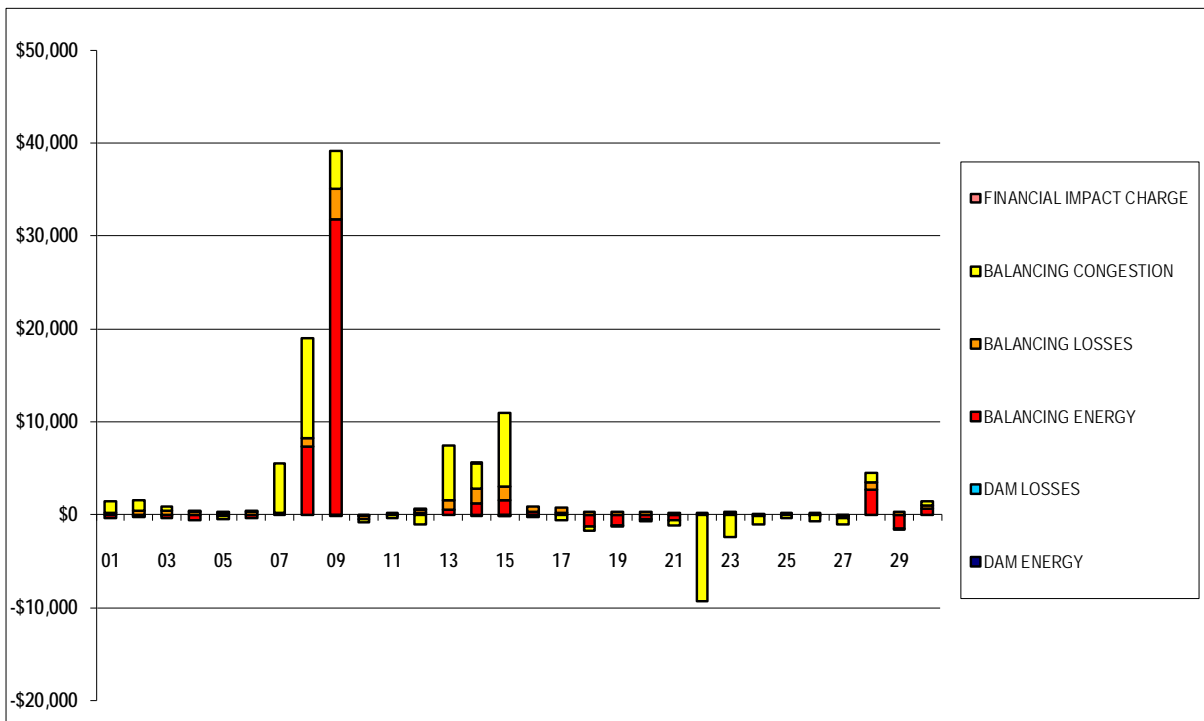
	MONDAY	TUESDAY	WEDNESDAY	THURSDAY	FRIDAY	SATURDAY	SUNDAY
			1	2	3	4	5
DAM NYCA			0	0	0	0	0
DAM NON-NYCA			0	0	0	0	0
DAM WHEELS			0	0	0	0	0
DAM VIRTUAL			0	0	0	0	0
BALANCING NYCA			(200)	(190)	(181)	(146)	(167)
BALANCING NON-NYCA			0	0	0	0	0
BALANCING WHEELS			0	0	0	0	0
BALANCING VIRTUAL			0	0	0	0	0
UFE/LOSSES			736	(10)	(9)	(16)	(6)
	6	7	8	9	10	11	12
DAM NYCA	0	0	0	0	0	0	0
DAM NON-NYCA	0	0	0	0	0	0	0
DAM WHEELS	0	0	0	0	0	0	0
DAM VIRTUAL	0	0	0	0	0	0	0
BALANCING NYCA	(170)	(283)	(548)	(1,376)	1,262	(62)	(122)
BALANCING NON-NYCA	0	0	0	0	0	0	0
BALANCING WHEELS	0	0	0	0	0	0	0
BALANCING VIRTUAL	0	0	0	0	0	0	0
UFE/LOSSES	(14)	19	237	953	(5)	2	8
	13	14	15	16	17	18	19
DAM NYCA	0	0	0	0	0	0	0
DAM NON-NYCA	0	0	0	0	0	0	0
DAM WHEELS	0	0	0	0	0	0	0
DAM VIRTUAL	0	0	0	0	0	0	0
BALANCING NYCA	(233)	(303)	(343)	(90)	(74)	238	186
BALANCING NON-NYCA	0	0	0	0	0	0	0
BALANCING WHEELS	0	0	0	0	0	0	0
BALANCING VIRTUAL	0	0	0	0	0	0	0
UFE/LOSSES	10	26	30	2	4	(31)	(26)
	20	21	22	23	24	25	26
DAM NYCA	0	0	0	0	0	0	0
DAM NON-NYCA	0	0	0	0	0	0	0
DAM WHEELS	0	0	0	0	0	0	0
DAM VIRTUAL	0	0	0	0	0	0	0
BALANCING NYCA	115	178	41	56	182	157	213
BALANCING NON-NYCA	0	0	0	0	0	0	0
BALANCING WHEELS	0	0	0	0	0	0	0
BALANCING VIRTUAL	0	0	0	0	0	0	0
UFE/LOSSES	(19)	(16)	3	2	(2)	2	(4)
	27	28	29	30			
DAM NYCA	0	0	0	0			
DAM NON-NYCA	0	0	0	0			
DAM WHEELS	0	0	0	0			
DAM VIRTUAL	0	0	0	0			
BALANCING NYCA	721	88	239	198			
BALANCING NON-NYCA	0	0	0	0			
BALANCING WHEELS	0	0	0	0			
BALANCING VIRTUAL	0	0	0	0			
UFE/LOSSES	(1)	99	(36)	8			



SETTLEMENTS REPORT
September 2021 Settlement Adjustment
February 7, 2022

Settlement Adjustment – Market Residuals Delta Analysis

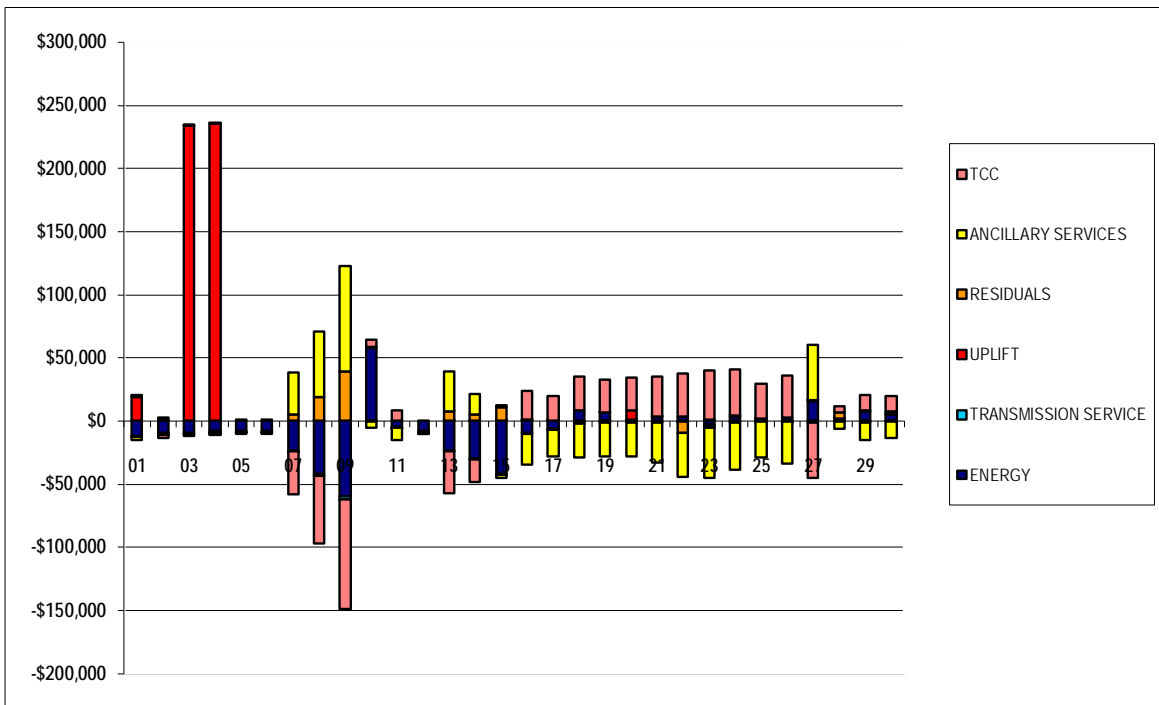
	MONDAY	TUESDAY	WEDNESDAY	THURSDAY	FRIDAY	SATURDAY	SUNDAY
			1	2	3	4	5
DAM ENERGY			\$0.00	(\$0.01)	(\$0.01)	\$0.00	\$0.00
DAM LOSSES			\$0.00	\$0.00	\$0.00	\$0.00	\$0.00
BALANCING ENERGY			(\$384.22)	(\$263.44)	(\$398.26)	(\$608.55)	(\$132.95)
BALANCING LOSSES			\$265.16	\$434.99	\$485.75	\$329.34	\$203.19
BALANCING CONGESTION			\$1,214.02	\$1,150.97	\$370.82	\$137.89	(\$284.51)
FINANCIAL IMPACT CHARGE			\$0.00	\$0.00	\$0.00	\$0.00	\$0.10
	6	7	8	9	10	11	12
DAM ENERGY	\$0.00	\$0.00	\$0.01	\$0.00	\$0.00	(\$0.01)	\$0.00
DAM LOSSES	\$0.01	\$0.00	\$0.00	\$0.00	(\$0.01)	\$0.00	\$0.01
BALANCING ENERGY	(\$358.90)	\$117.30	\$7,318.57	\$31,768.39	(\$123.09)	\$69.58	\$238.22
BALANCING LOSSES	\$317.89	\$141.30	\$969.06	\$3,318.29	(\$377.13)	\$186.92	\$265.86
BALANCING CONGESTION	\$162.99	\$5,314.81	\$10,761.24	\$4,130.69	(\$345.31)	(\$350.03)	(\$1,044.58)
FINANCIAL IMPACT CHARGE	\$0.00	\$0.00	\$0.00	(\$0.05)	\$0.00	\$0.00	\$0.13
	13	14	15	16	17	18	19
DAM ENERGY	\$0.00	(\$0.01)	(\$0.01)	\$0.00	\$0.00	\$0.00	\$0.00
DAM LOSSES	\$0.00	\$0.01	\$0.00	\$0.00	\$0.00	\$0.00	\$0.00
BALANCING ENERGY	\$536.98	\$1,279.98	\$1,528.54	\$295.32	\$244.19	(\$1,224.48)	(\$1,158.56)
BALANCING LOSSES	\$1,028.31	\$1,484.84	\$1,508.23	\$601.73	\$541.71	\$318.28	\$303.46
BALANCING CONGESTION	\$5,883.04	\$2,725.84	\$7,910.39	(\$199.26)	(\$590.39)	(\$480.10)	(\$68.60)
FINANCIAL IMPACT CHARGE	\$0.00	\$0.01	(\$0.02)	\$0.00	\$0.00	\$0.00	\$0.00
	20	21	22	23	24	25	26
DAM ENERGY	\$0.00	\$0.01	\$0.00	\$0.01	\$0.00	\$0.01	\$0.00
DAM LOSSES	\$0.00	\$0.00	\$0.00	(\$0.01)	\$0.01	\$0.01	\$0.00
BALANCING ENERGY	(\$477.66)	(\$531.08)	\$79.76	\$78.03	(\$163.62)	(\$11.35)	(\$62.76)
BALANCING LOSSES	\$290.30	\$203.22	\$158.24	\$208.49	\$138.18	\$212.31	\$128.41
BALANCING CONGESTION	(\$252.66)	(\$600.42)	(\$9,268.83)	(\$2,421.12)	(\$819.04)	(\$396.77)	(\$645.37)
FINANCIAL IMPACT CHARGE	\$0.00	\$0.00	\$0.00	\$0.00	\$0.00	\$0.00	\$0.03
	27	28	29	30			
DAM ENERGY	\$0.00	\$0.01	\$0.00	\$0.00			
DAM LOSSES	(\$0.01)	\$0.00	(\$0.01)	\$0.00			
BALANCING ENERGY	(\$139.00)	\$2,714.91	(\$1,471.56)	\$627.03			
BALANCING LOSSES	(\$206.55)	\$759.39	\$278.85	\$413.21			
BALANCING CONGESTION	(\$711.97)	\$1,005.04	(\$92.86)	\$417.12			
FINANCIAL IMPACT CHARGE	\$0.00	\$0.00	\$0.00	\$0.00			



SETTLEMENTS REPORT
September 2021 Settlement Adjustment
February 7, 2022

Settlement Adjustment – Market Costs Delta Analysis

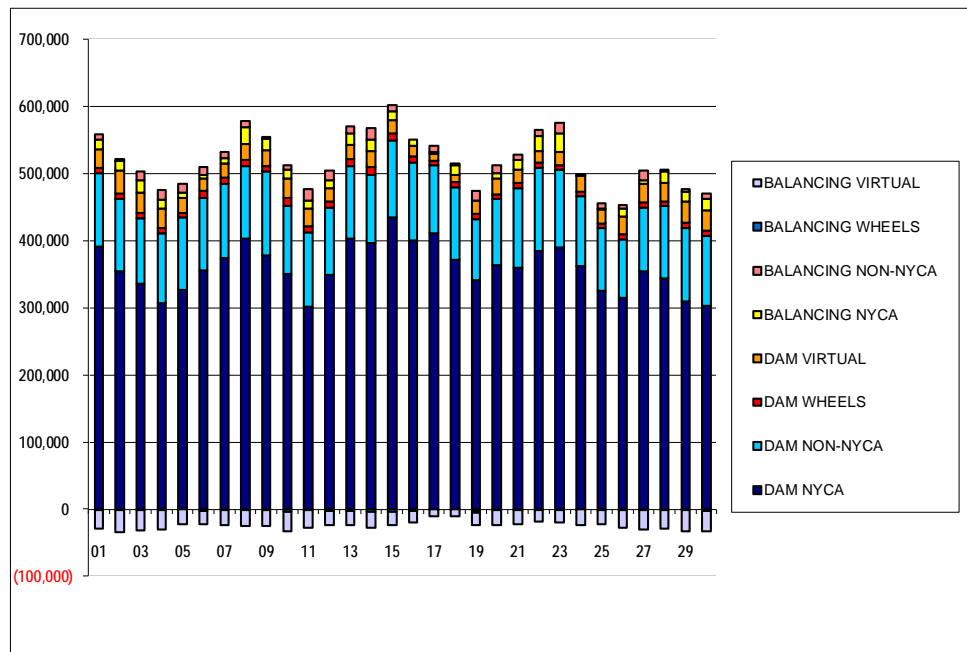
	MONDAY	TUESDAY	WEDNESDAY	THURSDAY	FRIDAY	SATURDAY	SUNDAY
			1	2	3	4	5
ENERGY			(\$11,934.65)	(\$9,543.42)	(\$9,291.65)	(\$7,976.02)	(\$7,373.90)
TRANSMISSION SERVICE			(\$986.92)	(\$1,250.26)	(\$1,174.98)	(\$1,327.29)	(\$1,185.70)
UPLIFT			\$18,881.66	(\$0.18)	\$233,640.88	\$235,099.67	(\$1.01)
RESIDUALS			\$1,094.96	\$1,322.51	\$458.30	(\$141.32)	(\$214.17)
ANCILLARY SERVICES			(\$2,080.51)	\$1,377.47	(\$1,597.08)	(\$1,495.79)	(\$1,702.57)
TCC			\$719.77	(\$2,662.93)	\$369.76	\$137.63	\$495.21
	6	7	8	9	10	11	12
ENERGY	(\$7,862.67)	(\$23,014.74)	(\$41,812.70)	(\$59,400.91)	\$57,679.24	(\$4,302.07)	(\$7,687.97)
TRANSMISSION SERVICE	(\$1,056.04)	(\$1,240.43)	(\$1,670.89)	(\$2,650.79)	\$850.84	(\$1,058.32)	(\$1,084.30)
UPLIFT	(\$3.91)	(\$63.74)	\$44.21	(\$46.17)	(\$0.43)	(\$2.02)	(\$25.69)
RESIDUALS	\$121.99	\$5,573.41	\$19,048.88	\$39,217.32	(\$845.54)	(\$93.54)	(\$540.36)
ANCILLARY SERVICES	(\$274.15)	\$32,682.51	\$51,864.29	\$83,384.90	(\$4,719.00)	(\$9,715.56)	(\$192.13)
TCC	(\$877.35)	(\$34,018.33)	(\$53,698.01)	(\$86,408.11)	\$5,928.53	\$8,661.22	(\$925.83)
	13	14	15	16	17	18	19
ENERGY	(\$23,396.57)	(\$29,617.24)	(\$41,638.97)	(\$9,474.55)	(\$6,473.25)	\$8,527.51	\$6,614.94
TRANSMISSION SERVICE	(\$779.77)	(\$1,058.47)	(\$860.12)	(\$702.26)	(\$769.16)	(\$358.57)	(\$609.53)
UPLIFT	\$24.30	\$79.81	\$122.06	\$153.11	\$137.02	(\$142.02)	\$168.59
RESIDUALS	\$7,448.33	\$5,490.67	\$10,947.13	\$697.79	\$195.51	(\$1,386.30)	(\$923.70)
ANCILLARY SERVICES	\$31,955.86	\$16,253.54	(\$2,891.80)	(\$24,026.50)	(\$20,502.58)	(\$27,241.33)	(\$26,834.47)
TCC	(\$32,916.99)	(\$17,299.64)	\$1,857.94	\$23,284.33	\$19,704.13	\$26,832.61	\$26,128.64
	20	21	22	23	24	25	26
ENERGY	\$1,194.22	\$3,333.01	\$3,480.86	(\$2,779.30)	\$3,733.33	\$1,930.40	\$3,076.02
TRANSMISSION SERVICE	(\$589.29)	(\$376.72)	(\$612.26)	(\$773.38)	(\$373.71)	(\$377.42)	(\$245.18)
UPLIFT	\$7,265.51	\$58.99	(\$27.62)	\$1,544.27	\$327.62	\$1.02	(\$0.27)
RESIDUALS	(\$440.02)	(\$928.27)	(\$9,030.83)	(\$2,134.60)	(\$844.47)	(\$195.79)	(\$579.69)
ANCILLARY SERVICES	(\$26,680.21)	(\$31,822.83)	(\$34,919.26)	(\$39,504.35)	(\$37,295.23)	(\$28,319.04)	(\$33,120.43)
TCC	\$26,250.84	\$31,445.84	\$34,337.35	\$38,864.81	\$36,956.02	\$27,966.15	\$32,899.76
	27	28	29	30			
ENERGY	\$15,813.28	\$2,154.18	\$7,974.57	\$5,629.39			
TRANSMISSION SERVICE	\$658.71	(\$525.49)	(\$361.72)	(\$323.69)			
UPLIFT	\$25.20	\$5.91	\$130.83	\$331.35			
RESIDUALS	(\$1,057.53)	\$4,479.35	(\$1,285.58)	\$1,457.36			
ANCILLARY SERVICES	\$44,249.07	(\$5,311.91)	(\$13,251.98)	(\$12,753.73)			
TCC	(\$43,696.35)	\$4,770.92	\$12,862.84	\$12,331.58			



SETTLEMENTS REPORT
September 2021 Settlement Adjustment
February 7, 2022

Initial Settlement – Market Supply Analysis

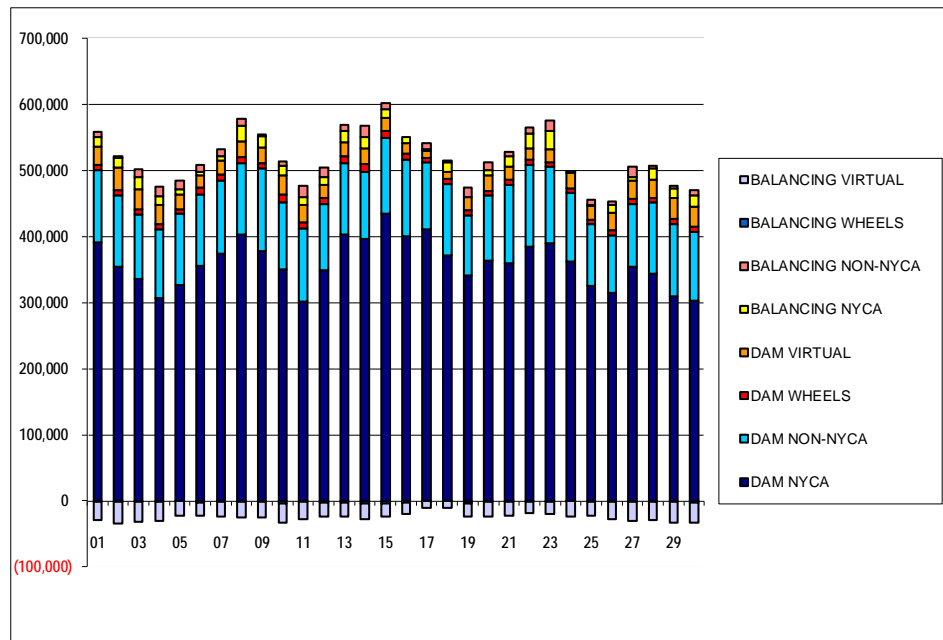
	MONDAY	TUESDAY	WEDNESDAY	THURSDAY	FRIDAY	SATURDAY	SUNDAY
			1	2	3	4	5
DAM NYCA			391,102	354,236	336,087	307,103	326,873
DAM NON-NYCA			109,145	108,858	97,089	103,857	107,438
DAM WHEELS			8,298	7,803	7,800	7,733	7,208
DAM VIRTUAL			27,899	33,635	30,668	28,708	22,127
BALANCING NYCA			14,372	14,460	18,502	13,379	7,985
BALANCING NON-NYCA			8,060	3,401	12,590	15,170	12,787
BALANCING WHEELS			(1,098)	(778)	(784)	(1,233)	(680)
BALANCING VIRTUAL			(27,899)	(33,635)	(30,668)	(28,708)	(22,127)
	6	7	8	9	10	11	12
DAM NYCA	355,853	373,818	403,184	378,367	350,029	301,759	348,642
DAM NON-NYCA	107,715	111,151	108,313	124,521	102,474	110,938	100,252
DAM WHEELS	10,220	8,772	8,321	8,065	10,716	8,642	9,420
DAM VIRTUAL	19,198	21,760	24,007	23,851	30,077	26,494	20,427
BALANCING NYCA	5,531	7,177	25,014	17,161	12,368	11,931	11,044
BALANCING NON-NYCA	10,799	10,234	9,601	3,286	7,332	17,599	14,840
BALANCING WHEELS	(3,020)	(1,830)	(1,340)	(865)	(3,516)	(1,635)	(2,822)
BALANCING VIRTUAL	(19,198)	(21,760)	(24,007)	(23,851)	(30,077)	(26,494)	(20,427)
	13	14	15	16	17	18	19
DAM NYCA	403,457	396,076	435,052	401,047	410,450	371,064	341,689
DAM NON-NYCA	108,196	102,465	113,899	115,753	101,758	108,999	90,835
DAM WHEELS	10,267	10,926	10,877	8,326	7,236	7,208	7,836
DAM VIRTUAL	20,305	23,884	20,006	16,107	10,727	10,777	19,704
BALANCING NYCA	17,799	17,637	12,780	9,113	2,546	14,412	(2,555)
BALANCING NON-NYCA	9,877	17,281	9,959	(2,769)	8,811	2,094	14,562
BALANCING WHEELS	(3,067)	(3,491)	(3,541)	(426)	(36)	(100)	(2,098)
BALANCING VIRTUAL	(20,305)	(23,884)	(20,006)	(16,107)	(10,727)	(10,777)	(19,704)
	20	21	22	23	24	25	26
DAM NYCA	363,634	359,897	384,210	390,530	361,920	325,338	314,701
DAM NON-NYCA	98,464	118,659	124,375	114,783	104,127	93,705	87,626
DAM WHEELS	7,556	7,943	7,680	7,655	7,200	7,200	7,200
DAM VIRTUAL	22,604	19,920	17,111	19,526	23,051	20,890	25,954
BALANCING NYCA	8,209	14,672	22,210	27,147	837	946	12,055
BALANCING NON-NYCA	12,492	7,581	10,221	16,452	2,343	7,317	5,201
BALANCING WHEELS	(1,315)	(1,861)	(996)	(885)	(258)	(1,689)	(1,813)
BALANCING VIRTUAL	(22,604)	(19,920)	(17,111)	(19,526)	(23,051)	(20,890)	(25,954)
	27	28	29	30			
DAM NYCA	354,110	344,500	309,284	302,948			
DAM NON-NYCA	95,404	106,993	109,732	104,280			
DAM WHEELS	7,344	7,348	7,516	7,859			
DAM VIRTUAL	27,930	27,510	31,903	30,765			
BALANCING NYCA	4,750	17,405	14,219	16,639			
BALANCING NON-NYCA	15,667	2,826	4,024	7,261			
BALANCING WHEELS	(1,778)	(1,782)	(1,470)	(2,207)			
BALANCING VIRTUAL	(27,930)	(27,510)	(31,903)	(30,765)			



SETTLEMENTS REPORT
September 2021 Settlement Adjustment
February 7, 2022

4-Month Settlement Adjustment – Market Supply Analysis

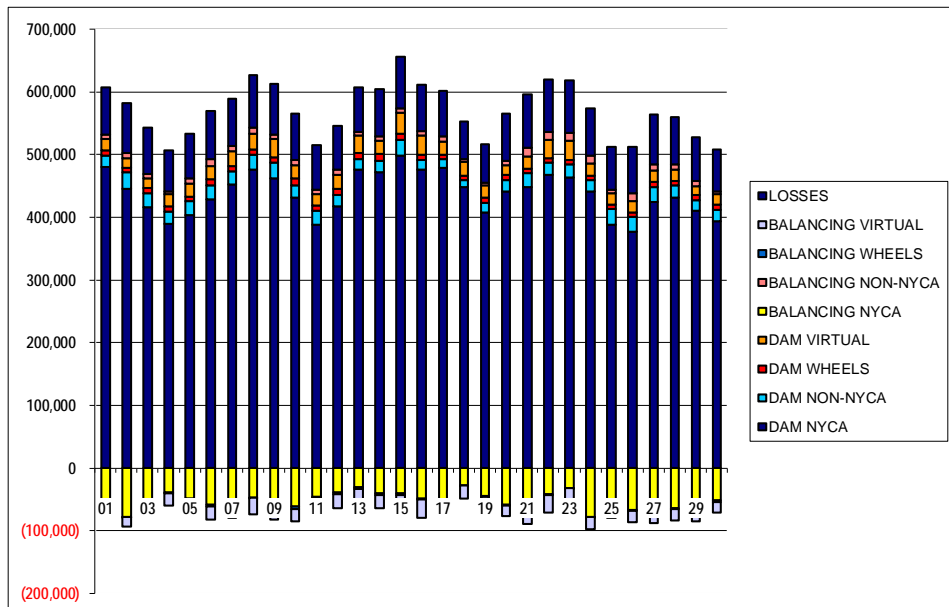
	MONDAY	TUESDAY	WEDNESDAY	THURSDAY	FRIDAY	SATURDAY	SUNDAY
			1	2	3	4	5
DAM NYCA			391,102	354,236	336,087	307,103	326,873
DAM NON-NYCA			109,145	108,858	97,089	103,857	107,438
DAM WHEELS			8,298	7,803	7,800	7,733	7,208
DAM VIRTUAL			27,899	33,635	30,668	28,708	22,127
BALANCING NYCA			14,160	14,259	18,312	13,217	7,812
BALANCING NON-NYCA			8,060	3,401	12,590	15,170	12,787
BALANCING WHEELS			(1,098)	(778)	(784)	(1,233)	(680)
BALANCING VIRTUAL			(27,899)	(33,635)	(30,668)	(28,708)	(22,127)
	6	7	8	9	10	11	12
DAM NYCA	355,853	373,818	403,184	378,367	350,029	301,759	348,642
DAM NON-NYCA	107,715	111,151	108,313	124,521	102,474	110,938	100,252
DAM WHEELS	10,220	8,772	8,321	8,065	10,716	8,642	9,420
DAM VIRTUAL	19,198	21,760	24,007	23,851	30,077	26,494	20,427
BALANCING NYCA	5,346	6,912	24,703	16,737	13,625	11,871	10,930
BALANCING NON-NYCA	10,799	10,234	9,601	3,286	7,332	17,599	14,840
BALANCING WHEELS	(3,020)	(1,830)	(1,340)	(865)	(3,516)	(1,635)	(2,822)
BALANCING VIRTUAL	(19,198)	(21,760)	(24,007)	(23,851)	(30,077)	(26,494)	(20,427)
	13	14	15	16	17	18	19
DAM NYCA	403,457	396,076	435,052	401,047	410,450	371,064	341,689
DAM NON-NYCA	108,196	102,465	113,899	115,753	101,758	108,999	90,835
DAM WHEELS	10,267	10,926	10,877	8,326	7,236	7,208	7,836
DAM VIRTUAL	20,305	23,884	20,006	16,107	10,727	10,777	19,704
BALANCING NYCA	17,575	17,360	12,467	9,026	2,476	14,619	(2,395)
BALANCING NON-NYCA	9,877	17,281	9,959	(2,769)	8,811	2,094	14,562
BALANCING WHEELS	(3,067)	(3,491)	(3,541)	(426)	(36)	(100)	(2,098)
BALANCING VIRTUAL	(20,305)	(23,884)	(20,006)	(16,107)	(10,727)	(10,777)	(19,704)
	20	21	22	23	24	25	26
DAM NYCA	363,634	359,897	384,210	390,530	361,920	325,338	314,701
DAM NON-NYCA	98,464	118,659	124,375	114,783	104,127	93,705	87,626
DAM WHEELS	7,556	7,943	7,680	7,655	7,200	7,200	7,200
DAM VIRTUAL	22,604	19,920	17,111	19,526	23,051	20,890	25,954
BALANCING NYCA	8,305	14,834	22,254	27,204	1,017	1,104	12,264
BALANCING NON-NYCA	12,492	7,581	10,221	16,452	2,343	7,317	5,201
BALANCING WHEELS	(1,315)	(1,861)	(996)	(885)	(258)	(1,689)	(1,813)
BALANCING VIRTUAL	(22,604)	(19,920)	(17,111)	(19,526)	(23,051)	(20,890)	(25,954)
	27	28	29	30			
DAM NYCA	354,110	344,500	309,284	302,948			
DAM NON-NYCA	95,404	106,993	109,732	104,280			
DAM WHEELS	7,344	7,348	7,516	7,859			
DAM VIRTUAL	27,930	27,510	31,903	30,765			
BALANCING NYCA	5,470	17,592	14,422	16,845			
BALANCING NON-NYCA	15,667	2,826	4,024	7,261			
BALANCING WHEELS	(1,778)	(1,782)	(1,470)	(2,207)			
BALANCING VIRTUAL	(27,930)	(27,510)	(31,903)	(30,765)			



SETTLEMENTS REPORT
September 2021 Settlement Adjustment
February 7, 2022

Initial Settlement – Market Withdrawals Analysis

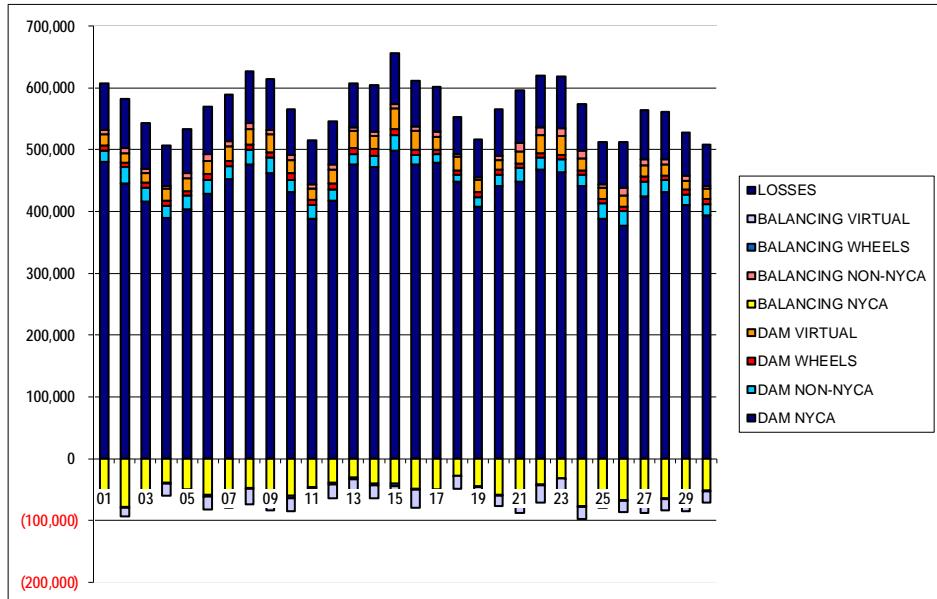
	MONDAY	TUESDAY	WEDNESDAY	THURSDAY	FRIDAY	SATURDAY	SUNDAY
			1	2	3	4	5
DAM NYCA			480,848	445,613	416,614	389,635	402,976
DAM NON-NYCA			17,157	25,660	22,318	19,738	22,705
DAM WHEELS			8,298	7,803	7,800	7,733	7,208
DAM VIRTUAL			18,908	15,125	15,416	20,303	21,357
BALANCING NYCA			(57,024)	(78,023)	(56,297)	(38,765)	(49,477)
BALANCING NON-NYCA			6,813	7,997	6,546	3,785	7,870
BALANCING WHEELS			(1,098)	(778)	(784)	(1,233)	(680)
BALANCING VIRTUAL			(18,908)	(15,125)	(15,416)	(20,303)	(21,357)
UFE/LOSSES			74,885	79,708	75,088	65,116	71,008
	6	7	8	9	10	11	12
DAM NYCA	429,022	452,458	475,832	461,638	431,225	387,561	416,880
DAM NON-NYCA	21,701	20,493	24,335	25,568	20,435	22,736	18,600
DAM WHEELS	10,220	8,772	8,321	8,065	10,716	8,642	9,420
DAM VIRTUAL	20,930	23,913	25,318	30,004	20,468	18,280	22,418
BALANCING NYCA	(58,358)	(53,727)	(46,741)	(51,449)	(61,776)	(46,174)	(58,876)
BALANCING NON-NYCA	11,180	7,814	9,656	6,813	8,655	7,441	9,311
BALANCING WHEELS	(3,020)	(1,830)	(1,340)	(865)	(3,516)	(1,635)	(2,822)
BALANCING VIRTUAL	(20,930)	(23,913)	(25,318)	(30,004)	(20,468)	(18,280)	(22,418)
UFE/LOSSES	76,353	75,341	83,030	80,764	73,664	70,661	68,864
	13	14	15	16	17	18	19
DAM NYCA	476,731	471,662	498,515	476,742	479,205	447,666	408,219
DAM NON-NYCA	15,831	19,069	24,483	15,398	13,815	11,954	14,809
DAM WHEELS	10,267	10,926	10,877	8,326	7,236	7,208	7,836
DAM VIRTUAL	27,872	20,628	33,660	30,150	20,074	21,430	20,471
BALANCING NYCA	(30,346)	(39,976)	(40,209)	(49,262)	(50,670)	(27,841)	(44,251)
BALANCING NON-NYCA	5,748	6,687	6,581	6,684	8,508	4,514	4,169
BALANCING WHEELS	(3,067)	(3,491)	(3,541)	(426)	(36)	(100)	(2,098)
BALANCING VIRTUAL	(27,872)	(20,628)	(33,660)	(30,150)	(20,074)	(21,430)	(20,471)
UFE/LOSSES	71,365	76,016	82,319	73,582	72,707	60,276	61,586
	20	21	22	23	24	25	26
DAM NYCA	441,815	447,840	467,679	463,955	441,707	388,436	376,852
DAM NON-NYCA	17,972	22,324	19,171	20,152	17,053	24,886	24,118
DAM WHEELS	7,556	7,943	7,680	7,655	7,200	7,200	7,200
DAM VIRTUAL	15,741	18,882	29,007	30,594	20,500	17,398	18,292
BALANCING NYCA	(59,111)	(68,003)	(41,843)	(31,860)	(77,482)	(61,047)	(66,752)
BALANCING NON-NYCA	7,549	13,606	12,966	12,478	11,619	5,459	11,953
BALANCING WHEELS	(1,315)	(1,861)	(996)	(885)	(258)	(1,689)	(1,913)
BALANCING VIRTUAL	(15,741)	(18,882)	(29,007)	(30,594)	(20,500)	(17,398)	(18,292)
UFE/LOSSES	74,574	85,041	83,043	84,187	76,331	69,572	73,413
	27	28	29	30			
DAM NYCA	425,143	431,489	410,649	393,596			
DAM NON-NYCA	23,440	19,647	17,240	18,343			
DAM WHEELS	7,344	7,348	7,516	7,859			
DAM VIRTUAL	19,081	17,807	14,183	17,567			
BALANCING NYCA	(67,242)	(63,618)	(69,038)	(51,559)			
BALANCING NON-NYCA	9,854	8,718	8,376	4,315			
BALANCING WHEELS	(1,778)	(1,782)	(1,470)	(2,207)			
BALANCING VIRTUAL	(19,081)	(17,807)	(14,183)	(17,567)			
UFE/LOSSES	78,736	75,487	70,032	66,434			



SETTLEMENTS REPORT
September 2021 Settlement Adjustment
February 7, 2022

4-Month Settlement Adjustment – Market Withdrawals Analysis

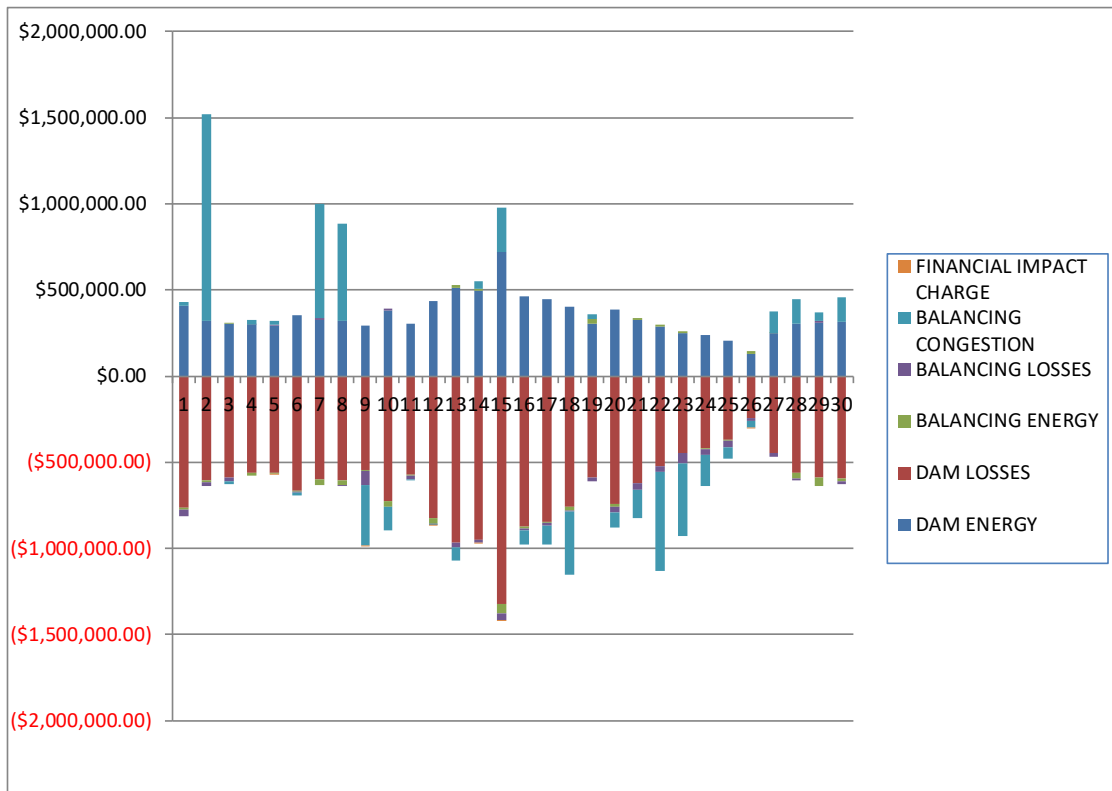
	MONDAY	TUESDAY	WEDNESDAY	THURSDAY	FRIDAY	SATURDAY	SUNDAY
			1	2	3	4	5
DAM NYCA			480,848	445,613	416,614	389,635	402,976
DAM NON-NYCA			17,157	25,660	22,318	19,738	22,705
DAM WHEELS			8,298	7,803	7,800	7,733	7,208
DAM VIRTUAL			18,908	15,125	15,416	20,303	21,357
BALANCING NYCA			(57,225)	(78,212)	(56,479)	(38,911)	(49,643)
BALANCING NON-NYCA			6,813	7,997	6,546	3,785	7,870
BALANCING WHEELS			(1,098)	(778)	(784)	(1,233)	(680)
BALANCING VIRTUAL			(18,908)	(15,125)	(15,416)	(20,303)	(21,357)
UFE/LOSSES			75,621	79,698	75,078	65,100	71,002
	6	7	8	9	10	11	12
DAM NYCA	429,022	452,458	475,832	461,638	431,225	387,561	416,880
DAM NON-NYCA	21,701	20,493	24,335	25,568	20,435	22,736	18,600
DAM WHEELS	10,220	8,772	8,321	8,065	10,716	8,642	9,420
DAM VIRTUAL	20,930	23,913	25,318	30,004	20,468	18,280	22,418
BALANCING NYCA	(58,529)	(54,010)	(47,289)	(52,825)	(60,514)	(46,236)	(38,997)
BALANCING NON-NYCA	11,180	7,814	9,656	6,813	8,655	7,441	9,311
BALANCING WHEELS	(3,020)	(1,830)	(1,340)	(865)	(3,516)	(1,635)	(2,822)
BALANCING VIRTUAL	(20,930)	(23,913)	(25,318)	(30,004)	(20,468)	(18,280)	(22,418)
UFE/LOSSES	76,339	75,359	83,267	81,717	73,658	70,664	68,871
	13	14	15	16	17	18	19
DAM NYCA	476,731	471,662	498,515	476,742	479,205	447,666	408,219
DAM NON-NYCA	15,831	19,069	24,483	15,398	13,815	11,954	14,809
DAM WHEELS	10,267	10,926	10,877	8,326	7,236	7,208	7,836
DAM VIRTUAL	27,872	20,628	33,660	30,150	20,074	21,430	20,471
BALANCING NYCA	(30,579)	(40,279)	(40,552)	(49,352)	(50,743)	(27,604)	(44,065)
BALANCING NON-NYCA	5,748	6,687	6,581	6,684	8,508	4,514	4,169
BALANCING WHEELS	(3,067)	(3,491)	(3,541)	(426)	(36)	(100)	(2,098)
BALANCING VIRTUAL	(27,872)	(20,628)	(33,660)	(30,150)	(20,074)	(21,430)	(20,471)
UFE/LOSSES	71,374	76,042	82,350	73,585	72,711	60,246	61,560
	20	21	22	23	24	25	26
DAM NYCA	441,815	447,840	467,679	463,955	441,707	388,436	376,852
DAM NON-NYCA	17,972	22,324	19,171	20,152	17,053	24,886	24,118
DAM WHEELS	7,556	7,943	7,680	7,655	7,200	7,200	7,200
DAM VIRTUAL	15,741	18,882	29,007	30,594	20,500	17,398	18,292
BALANCING NYCA	(58,996)	(67,825)	(41,802)	(31,804)	(77,300)	(60,890)	(66,540)
BALANCING NON-NYCA	7,549	13,606	12,966	12,478	11,619	5,459	11,953
BALANCING WHEELS	(1,315)	(1,861)	(996)	(885)	(258)	(1,689)	(1,813)
BALANCING VIRTUAL	(15,741)	(18,882)	(29,007)	(30,594)	(20,500)	(17,398)	(18,292)
UFE/LOSSES	74,555	85,025	83,046	84,189	76,329	69,573	73,409
	27	28	29	30			
DAM NYCA	425,143	431,489	410,649	393,596			
DAM NON-NYCA	23,440	19,647	17,240	18,343			
DAM WHEELS	7,344	7,348	7,516	7,859			
DAM VIRTUAL	19,081	17,807	14,183	17,567			
BALANCING NYCA	(66,521)	(63,529)	(68,799)	(51,361)			
BALANCING NON-NYCA	9,854	8,718	8,376	4,315			
BALANCING WHEELS	(1,778)	(1,782)	(1,470)	(2,207)			
BALANCING VIRTUAL	(19,081)	(17,807)	(14,183)	(17,567)			
UFE/LOSSES	78,736	75,586	69,997	66,441			



SETTLEMENTS REPORT
September 2021 Settlement Adjustment
February 7, 2022

Initial Settlement – Market Residuals Analysis

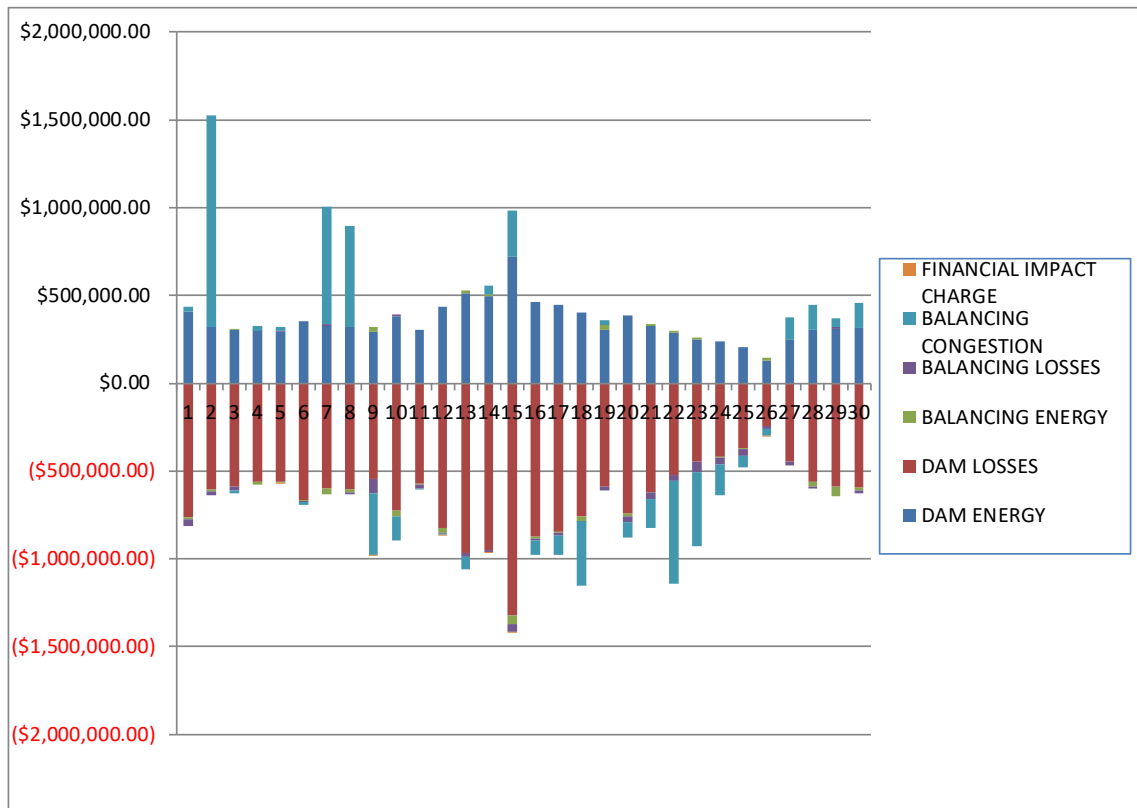
	MONDAY	TUESDAY	WEDNESDAY	THURSDAY	FRIDAY	SATURDAY	SUNDAY
			1	2	3	4	5
DAM ENERGY			\$408,105.48	\$322,024.25	\$302,527.99	\$298,368.76	\$293,390.07
DAM LOSSES			(\$765,563.63)	(\$607,413.04)	(\$586,084.63)	(\$562,251.69)	(\$563,121.23)
BALANCING ENERGY			(\$11,008.57)	(\$5,774.58)	\$3,155.87	(\$17,309.26)	(\$4,502.11)
BALANCING LOSSES			(\$35,485.03)	(\$26,564.34)	(\$25,240.90)	\$2,191.79	\$4,824.94
BALANCING CONGESTION			\$23,357.16	\$1,199,589.65	(\$14,059.26)	\$25,317.39	\$19,550.97
FINANCIAL IMPACT CHARGE			\$0.00	\$0.00	\$0.00	\$0.00	(\$41.60)
	6	7	8	9	10	11	12
DAM ENERGY	\$350,897.04	\$323,781.03	\$319,571.93	\$293,708.26	\$383,240.89	\$305,051.96	\$437,093.03
DAM LOSSES	(\$665,389.93)	(\$601,792.65)	(\$606,062.92)	(\$546,768.58)	(\$725,170.01)	(\$572,162.92)	(\$821,634.12)
BALANCING ENERGY	(\$4,695.48)	(\$28,214.37)	(\$25,015.96)	(\$3,150.48)	(\$33,975.91)	(\$4,232.93)	(\$32,475.63)
BALANCING LOSSES	(\$7,962.53)	\$12,649.16	(\$8,925.37)	(\$82,242.32)	\$11,016.08	(\$24,869.05)	(\$1,433.87)
BALANCING CONGESTION	(\$13,687.25)	\$661,524.69	\$565,562.52	(\$353,199.80)	(\$136,503.22)	(\$3,168.63)	(\$7,049.63)
FINANCIAL IMPACT CHARGE	\$0.00	\$0.00	\$0.00	(\$5,100.13)	\$0.00	\$0.00	(\$4,119.38)
	13	14	15	16	17	18	19
DAM ENERGY	\$512,268.56	\$496,534.29	\$717,930.57	\$464,198.74	\$444,834.01	\$401,604.65	\$304,082.86
DAM LOSSES	(\$965,391.48)	(\$949,856.68)	(\$1,319,784.28)	(\$874,549.30)	(\$846,961.77)	(\$758,693.51)	(\$589,044.43)
BALANCING ENERGY	\$13,922.15	\$9,081.06	(\$54,517.55)	(\$7,230.20)	(\$6,268.86)	(\$23,604.19)	\$26,102.55
BALANCING LOSSES	(\$26,277.15)	(\$14,388.91)	(\$43,262.61)	(\$13,888.71)	(\$15,334.53)	(\$4,680.83)	(\$23,085.61)
BALANCING CONGESTION	(\$76,770.26)	\$44,222.18	\$257,193.98	(\$79,482.18)	(\$107,449.68)	(\$366,478.87)	\$29,369.96
FINANCIAL IMPACT CHARGE	\$0.00	(\$396.38)	(\$2.09)	\$0.00	\$0.00	\$0.00	\$0.00
	20	21	22	23	24	25	26
DAM ENERGY	\$387,909.76	\$327,799.95	\$287,969.74	\$251,604.73	\$238,214.72	\$205,673.45	\$131,513.87
DAM LOSSES	(\$742,197.77)	(\$621,987.99)	(\$524,594.84)	(\$444,991.25)	(\$420,337.42)	(\$369,439.01)	(\$241,273.13)
BALANCING ENERGY	(\$16,037.86)	\$10,031.72	\$10,942.81	\$9,257.73	(\$6,408.10)	(\$6,839.60)	\$12,922.07
BALANCING LOSSES	(\$31,128.10)	(\$36,020.94)	(\$33,731.87)	(\$60,056.96)	(\$33,034.30)	(\$38,814.63)	(\$21,139.45)
BALANCING CONGESTION	(\$86,645.04)	(\$165,633.33)	(\$571,365.40)	(\$422,334.48)	(\$177,553.68)	(\$65,996.58)	(\$37,460.13)
FINANCIAL IMPACT CHARGE	\$0.00	\$0.00	\$0.00	\$0.00	\$0.00	\$0.00	(\$83.05)
	27	28	29	30			
DAM ENERGY	\$248,013.24	\$306,271.18	\$308,366.05	\$316,190.86			
DAM LOSSES	(\$445,342.18)	(\$559,603.70)	(\$586,590.06)	(\$592,207.13)			
BALANCING ENERGY	\$3,114.54	(\$33,277.64)	(\$52,604.00)	(\$16,605.52)			
BALANCING LOSSES	(\$21,954.61)	(\$11,410.71)	\$11,177.57	(\$17,377.14)			
BALANCING CONGESTION	\$125,458.94	\$141,422.92	\$48,068.13	\$141,205.83			
FINANCIAL IMPACT CHARGE	\$0.00	\$0.00	\$0.00	\$0.00			



SETTLEMENTS REPORT
September 2021 Settlement Adjustment
February 7, 2022

4-Month Settlement Adjustment – Market Residuals Analysis

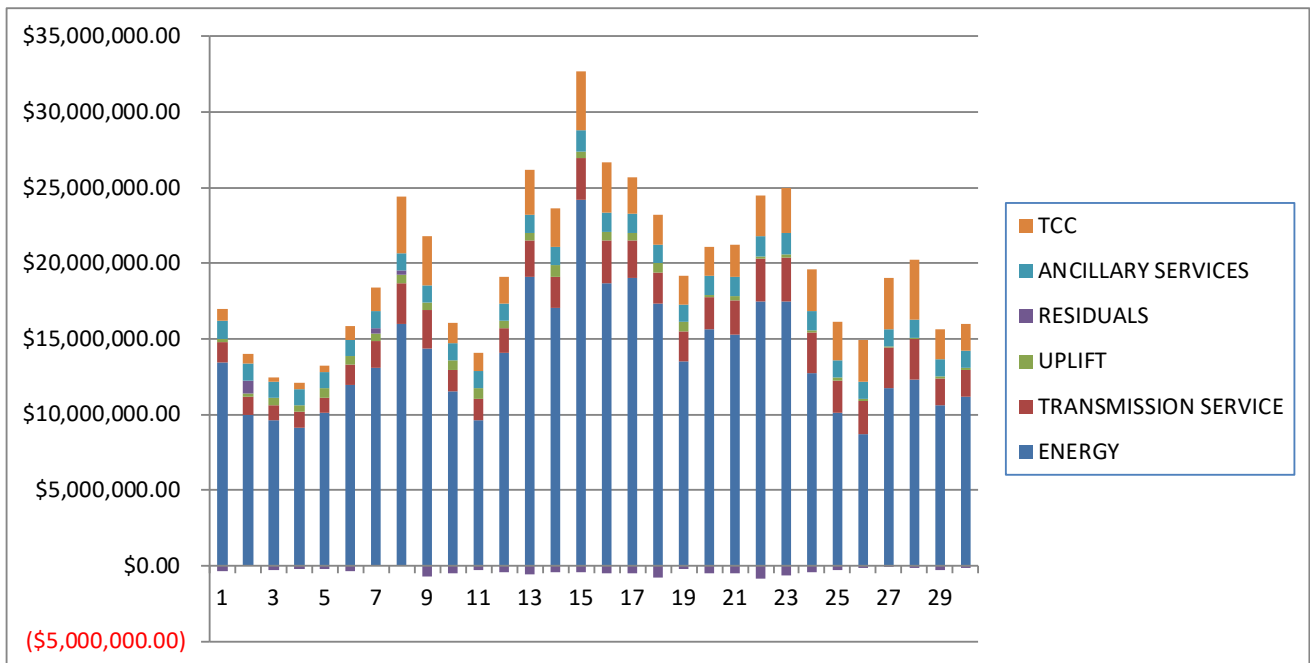
	MONDAY	TUESDAY	WEDNESDAY	THURSDAY	FRIDAY	SATURDAY	SUNDAY
			1	2	3	4	5
DAM ENERGY			\$408,105.48	\$322,024.24	\$302,527.98	\$298,368.76	\$293,390.07
DAM LOSSES			(\$765,563.63)	(\$607,413.04)	(\$586,084.63)	(\$562,251.69)	(\$563,121.23)
BALANCING ENERGY			(\$11,392.79)	(\$6,038.02)	\$2,757.61	(\$17,917.81)	(\$4,635.06)
BALANCING LOSSES			(\$35,219.87)	(\$26,129.35)	(\$24,755.15)	\$2,521.13	\$5,028.13
BALANCING CONGESTION			\$24,571.18	\$1,200,740.62	(\$13,688.44)	\$25,455.28	\$19,266.46
FINANCIAL IMPACT CHARGE			\$0.00	\$0.00	\$0.00	\$0.00	(\$41.50)
	6	7	8	9	10	11	12
DAM ENERGY	\$350,897.04	\$323,781.03	\$319,571.94	\$293,708.26	\$383,240.89	\$305,051.95	\$437,093.03
DAM LOSSES	(\$665,389.92)	(\$601,792.65)	(\$606,062.92)	(\$546,768.58)	(\$725,170.02)	(\$572,162.92)	(\$821,634.11)
BALANCING ENERGY	(\$5,054.38)	(\$28,097.07)	(\$17,697.39)	\$28,617.91	(\$34,099.00)	(\$4,163.35)	(\$32,237.41)
BALANCING LOSSES	(\$7,644.64)	\$12,790.46	(\$7,956.31)	(\$78,924.03)	\$10,638.95	(\$24,682.13)	(\$1,168.01)
BALANCING CONGESTION	(\$13,524.26)	\$666,839.50	\$576,323.76	(\$349,069.11)	(\$136,848.53)	(\$3,518.66)	(\$8,094.21)
FINANCIAL IMPACT CHARGE	\$0.00	\$0.00	\$0.00	(\$5,100.18)	\$0.00	\$0.00	(\$4,119.25)
	13	14	15	16	17	18	19
DAM ENERGY	\$512,268.56	\$496,534.28	\$717,930.56	\$464,198.74	\$444,834.01	\$401,604.65	\$304,082.86
DAM LOSSES	(\$965,391.48)	(\$949,856.67)	(\$1,319,784.28)	(\$874,549.30)	(\$846,961.77)	(\$758,693.51)	(\$589,044.43)
BALANCING ENERGY	\$14,459.13	\$10,361.04	(\$52,989.01)	(\$6,934.88)	(\$6,024.67)	(\$24,828.67)	\$24,943.99
BALANCING LOSSES	(\$25,248.84)	(\$12,904.07)	(\$41,754.38)	(\$13,286.98)	(\$14,792.82)	(\$4,362.55)	(\$22,782.15)
BALANCING CONGESTION	(\$70,887.22)	\$46,948.02	\$265,104.37	(\$79,681.44)	(\$108,040.07)	(\$366,958.97)	\$29,301.36
FINANCIAL IMPACT CHARGE	\$0.00	(\$396.37)	(\$2.11)	\$0.00	\$0.00	\$0.00	\$0.00
	20	21	22	23	24	25	26
DAM ENERGY	\$387,909.76	\$327,799.96	\$287,969.74	\$251,604.74	\$238,214.72	\$205,673.46	\$131,513.87
DAM LOSSES	(\$742,197.77)	(\$621,987.99)	(\$524,594.84)	(\$444,991.26)	(\$420,337.41)	(\$369,439.00)	(\$241,273.13)
BALANCING ENERGY	(\$16,515.52)	\$9,500.64	\$11,022.57	\$9,335.76	(\$6,571.72)	(\$6,850.95)	\$12,859.31
BALANCING LOSSES	(\$30,837.80)	(\$35,817.72)	(\$33,573.63)	(\$59,848.47)	(\$32,896.12)	(\$38,602.32)	(\$21,011.04)
BALANCING CONGESTION	(\$86,897.70)	(\$166,233.75)	(\$580,634.23)	(\$424,755.60)	(\$178,372.72)	(\$66,393.35)	(\$38,105.50)
FINANCIAL IMPACT CHARGE	\$0.00	\$0.00	\$0.00	\$0.00	\$0.00	\$0.00	(\$83.02)
	27	28	29	30			
DAM ENERGY	\$248,013.24	\$306,271.19	\$308,366.05	\$316,190.86			
DAM LOSSES	(\$445,342.19)	(\$559,603.70)	(\$586,590.07)	(\$592,207.13)			
BALANCING ENERGY	\$2,975.54	(\$30,562.73)	(\$54,075.56)	(\$15,978.49)			
BALANCING LOSSES	(\$22,161.16)	(\$10,651.32)	\$11,456.42	(\$16,963.93)			
BALANCING CONGESTION	\$124,746.97	\$142,427.96	\$47,975.27	\$141,622.95			
FINANCIAL IMPACT CHARGE	\$0.00	\$0.00	\$0.00	\$0.00			



SETTLEMENTS REPORT
September 2021 Settlement Adjustment
February 7, 2022

Initial Settlement – Market Costs Analysis

	MONDAY	TUESDAY	WEDNESDAY	THURSDAY	FRIDAY	SATURDAY	SUNDAY
			1	2	3	4	5
ENERGY			\$13,447,624.78	\$9,975,123.74	\$9,647,231.46	\$9,139,765.80	\$10,112,837.42
TRANSMISSION SERVICE			\$1,370,545.44	\$1,213,426.98	\$995,702.14	\$1,028,819.12	\$1,006,620.14
UPLIFT			\$203,730.40	\$196,804.81	\$434,892.81	\$413,993.29	\$618,021.29
RESIDUALS			(\$380,594.59)	\$881,861.94	(\$319,700.93)	(\$253,683.01)	(\$249,898.96)
ANCILLARY SERVICES			\$1,181,755.05	\$1,097,251.06	\$1,090,091.28	\$1,068,575.42	\$1,095,539.17
TCC			\$781,095.19	\$674,489.62	\$269,320.61	\$464,699.81	\$391,662.54
	6	7	8	9	10	11	12
ENERGY	\$11,961,370.90	\$13,099,750.94	\$15,984,805.48	\$14,361,419.85	\$11,515,607.74	\$9,620,987.04	\$14,048,202.50
TRANSMISSION SERVICE	\$1,355,339.12	\$1,770,229.05	\$2,697,843.73	\$2,524,895.55	\$1,448,794.37	\$1,394,131.98	\$1,634,123.37
UPLIFT	\$520,514.73	\$487,901.57	\$581,309.96	\$552,218.28	\$630,904.27	\$741,343.98	\$544,622.51
RESIDUALS	(\$340,838.15)	\$367,947.86	\$245,130.20	(\$696,753.05)	(\$501,392.17)	(\$299,381.57)	(\$429,619.60)
ANCILLARY SERVICES	\$1,120,121.53	\$1,105,619.80	\$1,171,466.49	\$1,110,493.01	\$1,123,234.69	\$1,091,305.90	\$1,129,492.48
TCC	\$880,225.04	\$1,585,613.98	\$3,705,621.12	\$3,216,927.71	\$1,307,072.74	\$1,197,355.40	\$1,759,596.16
	13	14	15	16	17	18	19
ENERGY	\$19,072,638.18	\$17,029,623.09	\$24,231,024.87	\$18,695,927.16	\$19,009,028.10	\$17,337,313.25	\$13,523,216.61
TRANSMISSION SERVICE	\$2,411,120.78	\$2,090,512.54	\$2,717,664.02	\$2,813,804.40	\$2,473,458.93	\$2,065,178.03	\$1,945,468.97
UPLIFT	\$521,235.45	\$731,601.22	\$461,441.13	\$535,711.25	\$529,430.00	\$604,504.45	\$661,108.19
RESIDUALS	(\$542,248.18)	(\$414,804.44)	(\$442,441.98)	(\$510,951.65)	(\$531,180.83)	(\$751,852.75)	(\$252,574.67)
ANCILLARY SERVICES	\$1,211,200.19	\$1,235,492.26	\$1,392,727.22	\$1,322,777.71	\$1,271,108.11	\$1,253,026.31	\$1,156,048.96
TCC	\$2,950,171.27	\$2,568,883.89	\$3,893,938.76	\$3,278,818.50	\$2,432,321.58	\$1,917,877.88	\$1,897,537.23
	20	21	22	23	24	25	26
ENERGY	\$15,657,658.31	\$15,288,284.42	\$17,501,713.61	\$17,441,091.89	\$12,706,543.35	\$10,096,265.67	\$8,681,664.42
TRANSMISSION SERVICE	\$2,106,686.79	\$2,271,559.73	\$2,792,812.47	\$2,967,805.07	\$2,704,113.52	\$2,139,760.84	\$2,193,241.27
UPLIFT	\$141,453.11	\$282,091.92	\$134,640.62	\$181,506.91	\$167,239.84	\$203,801.65	\$181,766.25
RESIDUALS	(\$488,099.01)	(\$485,810.59)	(\$830,779.56)	(\$666,520.23)	(\$399,118.78)	(\$275,416.37)	(\$155,519.82)
ANCILLARY SERVICES	\$1,246,471.70	\$1,233,667.73	\$1,341,571.33	\$1,405,768.98	\$1,251,047.59	\$1,114,985.71	\$1,103,238.59
TCC	\$1,953,726.26	\$2,130,844.94	\$2,679,800.94	\$2,998,267.25	\$2,776,301.65	\$2,542,781.06	\$2,786,418.58
	27	28	29	30			
ENERGY	\$11,770,289.38	\$12,338,999.88	\$10,597,228.06	\$11,167,297.25			
TRANSMISSION SERVICE	\$2,650,118.15	\$2,680,638.34	\$1,779,112.03	\$1,746,564.68			
UPLIFT	\$68,859.04	\$83,561.31	\$172,298.29	\$203,236.37			
RESIDUALS	(\$90,710.07)	(\$156,597.95)	(\$271,582.31)	(\$168,793.10)			
ANCILLARY SERVICES	\$1,125,716.46	\$1,176,850.29	\$1,121,587.79	\$1,113,374.31			
TCC	\$3,418,750.31	\$3,947,157.30	\$1,966,944.34	\$1,785,064.81			



SETTLEMENTS REPORT
September 2021 Settlement Adjustment
February 7, 2022

4-Month Settlement Adjustment – Market Costs Analysis

	MONDAY	TUESDAY	WEDNESDAY	THURSDAY	FRIDAY	SATURDAY	SUNDAY
			1	2	3	4	5
ENERGY			\$13,435,690.13	\$9,965,580.32	\$9,637,939.81	\$9,131,789.78	\$10,105,463.52
TRANSMISSION SERVICE			\$1,369,558.52	\$1,212,176.72	\$994,527.16	\$1,027,491.83	\$1,005,434.44
UPLIFT			\$222,612.06	\$196,804.63	\$668,533.69	\$649,092.96	\$618,020.28
RESIDUALS			(\$379,499.63)	\$883,184.45	(\$319,242.63)	(\$253,824.33)	(\$250,113.13)
ANCILLARY SERVICES			\$1,179,674.54	\$1,098,628.53	\$1,088,494.20	\$1,067,079.63	\$1,093,836.60
TCC			\$781,814.96	\$671,826.69	\$269,690.37	\$464,837.44	\$392,157.75
	6	7	8	9	10	11	12
ENERGY	\$11,953,508.23	\$13,076,736.20	\$15,942,992.78	\$14,302,018.94	\$11,573,286.98	\$9,616,684.97	\$14,040,514.53
TRANSMISSION SERVICE	\$1,354,283.08	\$1,768,988.62	\$2,696,172.84	\$2,522,244.76	\$1,449,645.21	\$1,393,073.66	\$1,633,039.07
UPLIFT	\$520,510.82	\$487,837.83	\$581,354.17	\$552,172.11	\$630,903.84	\$741,341.96	\$544,596.82
RESIDUALS	(\$340,716.16)	\$373,521.27	\$264,179.08	(\$657,535.73)	(\$502,237.71)	(\$299,475.11)	(\$430,159.96)
ANCILLARY SERVICES	\$1,119,847.38	\$1,138,302.31	\$1,223,330.78	\$1,193,877.91	\$1,118,515.69	\$1,081,590.34	\$1,129,300.35
TCC	\$879,347.69	\$1,551,595.65	\$3,651,923.11	\$3,130,519.60	\$1,313,001.27	\$1,206,016.62	\$1,758,670.33
	13	14	15	16	17	18	19
ENERGY	\$19,049,241.61	\$17,000,005.85	\$24,189,385.90	\$18,686,452.61	\$19,002,554.85	\$17,345,840.76	\$13,529,831.55
TRANSMISSION SERVICE	\$2,410,341.01	\$2,089,454.07	\$2,716,803.90	\$2,813,102.14	\$2,472,689.77	\$2,064,819.46	\$1,944,859.44
UPLIFT	\$521,259.75	\$731,681.03	\$461,563.19	\$535,864.36	\$529,567.02	\$604,362.43	\$661,276.78
RESIDUALS	(\$534,799.85)	(\$409,313.77)	(\$431,494.85)	(\$510,253.86)	(\$530,985.32)	(\$753,239.05)	(\$253,498.37)
ANCILLARY SERVICES	\$1,243,156.05	\$1,251,745.80	\$1,389,835.42	\$1,298,751.21	\$1,250,605.53	\$1,225,784.98	\$1,129,214.49
TCC	\$2,917,254.28	\$2,551,584.25	\$3,895,796.70	\$3,302,102.83	\$2,452,025.71	\$1,944,710.49	\$1,923,665.87
	20	21	22	23	24	25	26
ENERGY	\$15,658,852.53	\$15,291,617.43	\$17,505,194.47	\$17,438,312.59	\$12,710,276.68	\$10,098,196.07	\$8,684,740.44
TRANSMISSION SERVICE	\$2,106,097.50	\$2,271,183.01	\$2,792,200.21	\$2,967,031.69	\$2,703,739.81	\$2,139,383.42	\$2,192,996.09
UPLIFT	\$148,718.62	\$282,150.91	\$134,613.00	\$183,051.18	\$167,567.46	\$203,802.67	\$181,765.98
RESIDUALS	(\$488,539.03)	(\$486,738.86)	(\$839,810.39)	(\$668,654.83)	(\$399,963.25)	(\$275,612.16)	(\$156,099.51)
ANCILLARY SERVICES	\$1,219,791.49	\$1,201,844.90	\$1,306,652.07	\$1,366,264.63	\$1,213,752.36	\$1,086,666.67	\$1,070,118.16
TCC	\$1,979,977.10	\$2,162,290.78	\$2,714,138.29	\$3,037,132.06	\$2,813,257.67	\$2,570,747.21	\$2,819,318.34
	27	28	29	30			
ENERGY	\$11,786,102.66	\$12,341,154.06	\$10,605,202.63	\$11,172,926.64			
TRANSMISSION SERVICE	\$2,650,776.86	\$2,680,112.85	\$1,778,750.31	\$1,746,240.99			
UPLIFT	\$68,884.24	\$83,567.22	\$172,429.12	\$203,567.72			
RESIDUALS	(\$91,767.60)	(\$152,118.60)	(\$272,867.89)	(\$167,335.74)			
ANCILLARY SERVICES	\$1,169,965.53	\$1,171,538.38	\$1,108,335.81	\$1,100,620.58			
TCC	\$3,375,053.96	\$3,951,928.22	\$1,979,807.18	\$1,797,396.39			

