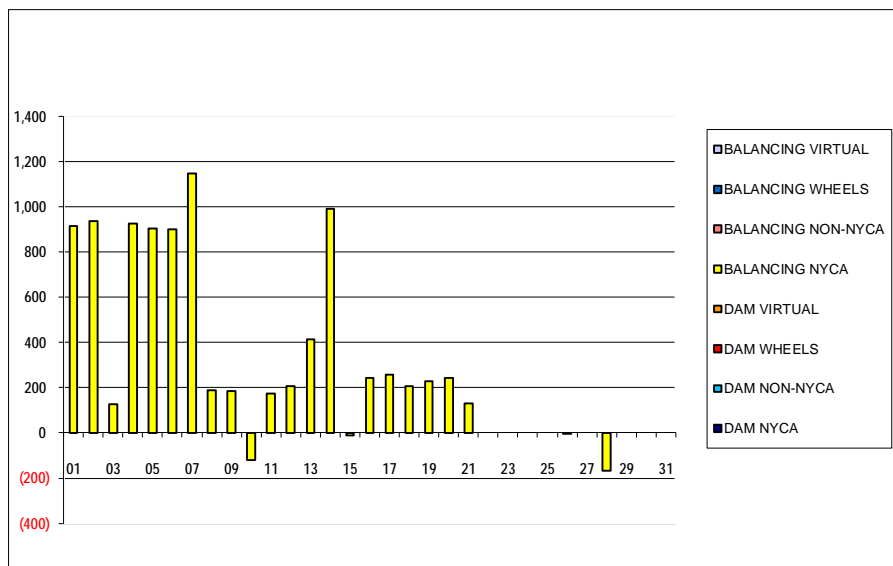


SETTLEMENTS REPORT
 January 2022 Settlement Adjustment
 February 7, 2022

Initial – Market Supply Delta Analysis

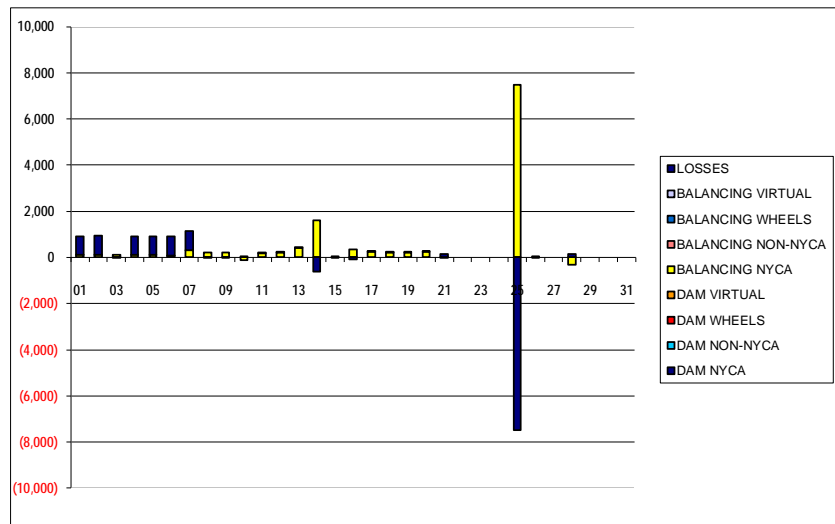
	MONDAY	TUESDAY	WEDNESDAY	THURSDAY	FRIDAY	SATURDAY	SUNDAY
DAM NYCA						1	2
DAM NON-NYCA						0	0
DAM WHEELS						0	0
DAM VIRTUAL						0	0
BALANCING NYCA						915	936
BALANCING NON-NYCA						0	0
BALANCING WHEELS						0	0
BALANCING VIRTUAL						0	0
	3	4	5	6	7	8	9
DAM NYCA	0	0	0	0	0	0	0
DAM NON-NYCA	0	0	0	0	0	0	0
DAM WHEELS	0	0	0	0	0	0	0
DAM VIRTUAL	0	0	0	0	0	0	0
BALANCING NYCA	125	925	904	901	1,148	187	186
BALANCING NON-NYCA	0	0	0	0	0	0	0
BALANCING WHEELS	0	0	0	0	0	0	0
BALANCING VIRTUAL	0	0	0	0	0	0	0
	10	11	12	13	14	15	16
DAM NYCA	0	0	0	0	0	0	0
DAM NON-NYCA	0	0	0	0	0	0	0
DAM WHEELS	0	0	0	0	0	0	0
DAM VIRTUAL	0	0	0	0	0	0	0
BALANCING NYCA	(119)	175	207	415	993	(9)	243
BALANCING NON-NYCA	0	0	0	0	0	0	0
BALANCING WHEELS	0	0	0	0	0	0	0
BALANCING VIRTUAL	0	0	0	0	0	0	0
	17	18	19	20	21	22	23
DAM NYCA	0	0	0	0	0	0	0
DAM NON-NYCA	0	0	0	0	0	0	0
DAM WHEELS	0	0	0	0	0	0	0
DAM VIRTUAL	0	0	0	0	0	0	0
BALANCING NYCA	256	208	229	244	129	0	0
BALANCING NON-NYCA	0	0	0	0	0	0	0
BALANCING WHEELS	0	0	0	0	0	0	0
BALANCING VIRTUAL	0	0	0	0	0	0	0
	24	25	26	27	28	29	30
DAM NYCA	0	0	0	0	0	0	0
DAM NON-NYCA	0	0	0	0	0	0	0
DAM WHEELS	0	0	0	0	0	0	0
DAM VIRTUAL	0	0	0	0	0	0	0
BALANCING NYCA	0	0	(1)	0	(167)	0	0
BALANCING NON-NYCA	0	0	0	0	0	0	0
BALANCING WHEELS	0	0	0	0	0	0	0
BALANCING VIRTUAL	0	0	0	0	0	0	0
	31						
DAM NYCA	0						
DAM NON-NYCA	0						
DAM WHEELS	0						
DAM VIRTUAL	0						
BALANCING NYCA	0						
BALANCING NON-NYCA	0						
BALANCING WHEELS	0						
BALANCING VIRTUAL	0						



SETTLEMENTS REPORT
January 2022 Settlement Adjustment
February 7, 2022

Initial – Market Withdrawals Delta Analysis

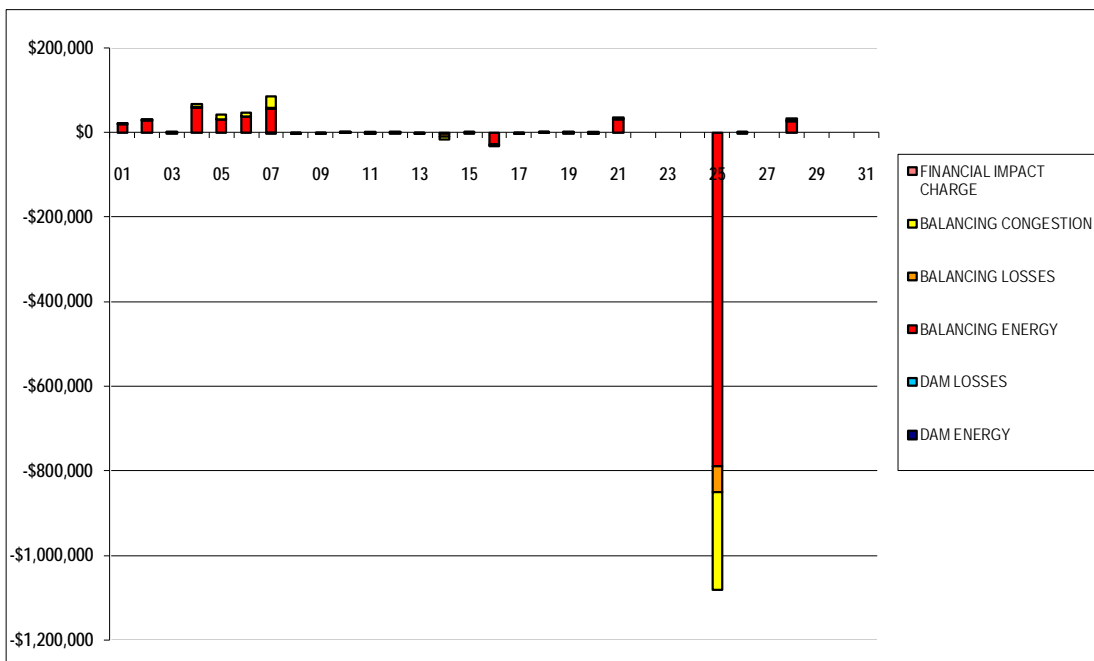
	MONDAY	TUESDAY	WEDNESDAY	THURSDAY	FRIDAY	SATURDAY	SUNDAY
						1	2
DAM NYCA						0	0
DAM NON-NYCA						0	0
DAM WHEELS						0	0
DAM VIRTUAL						0	0
BALANCING NYCA						123	128
BALANCING NON-NYCA						0	0
BALANCING WHEELS						0	0
BALANCING VIRTUAL						0	0
UFE/LOSSES						791	808
	3	4	5	6	7	8	9
DAM NYCA	0	0	0	0	0	0	0
DAM NON-NYCA	0	0	0	0	0	0	0
DAM WHEELS	0	0	0	0	0	0	0
DAM VIRTUAL	0	0	0	0	0	0	0
BALANCING NYCA	127	119	99	92	302	200	205
BALANCING NON-NYCA	0	0	0	0	0	0	0
BALANCING WHEELS	0	0	0	0	0	0	0
BALANCING VIRTUAL	0	0	0	0	0	0	0
UFE/LOSSES	(2)	806	805	808	847	(13)	(19)
	10	11	12	13	14	15	16
DAM NYCA	0	0	0	0	0	0	0
DAM NON-NYCA	0	0	0	0	0	0	0
DAM WHEELS	0	0	0	0	0	0	0
DAM VIRTUAL	0	0	0	0	0	0	0
BALANCING NYCA	(122)	175	207	415	1,610	(10)	331
BALANCING NON-NYCA	0	0	0	0	0	0	0
BALANCING WHEELS	0	0	0	0	0	0	0
BALANCING VIRTUAL	0	0	0	0	0	0	0
UFE/LOSSES	3	0	0	0	(617)	0	(88)
	17	18	19	20	21	22	23
DAM NYCA	0	0	0	0	0	0	0
DAM NON-NYCA	0	0	0	0	0	0	0
DAM WHEELS	0	0	0	0	0	0	0
DAM VIRTUAL	0	0	0	0	0	0	0
BALANCING NYCA	256	208	228	244	(29)	0	0
BALANCING NON-NYCA	0	0	0	0	0	0	0
BALANCING WHEELS	0	0	0	0	0	0	0
BALANCING VIRTUAL	0	0	0	0	0	0	0
UFE/LOSSES	0	0	1	0	157	0	0
	24	25	26	27	28	29	30
DAM NYCA	0	0	0	0	0	0	0
DAM NON-NYCA	0	0	0	0	0	0	0
DAM WHEELS	0	0	0	0	0	0	0
DAM VIRTUAL	0	0	0	0	0	0	0
BALANCING NYCA	0	7,493	(1)	0	(311)	0	0
BALANCING NON-NYCA	0	0	0	0	0	0	0
BALANCING WHEELS	0	0	0	0	0	0	0
BALANCING VIRTUAL	0	0	0	0	0	0	0
UFE/LOSSES	0	(7,493)	0	0	144	0	0
	31						
DAM NYCA	0						
DAM NON-NYCA	0						
DAM WHEELS	0						
DAM VIRTUAL	0						
BALANCING NYCA	0						
BALANCING NON-NYCA	0						
BALANCING WHEELS	0						
BALANCING VIRTUAL	0						
UFE/LOSSES	0						



SETTLEMENTS REPORT
January 2022 Settlement Adjustment
February 7, 2022

Initial – Market Residuals Delta Analysis

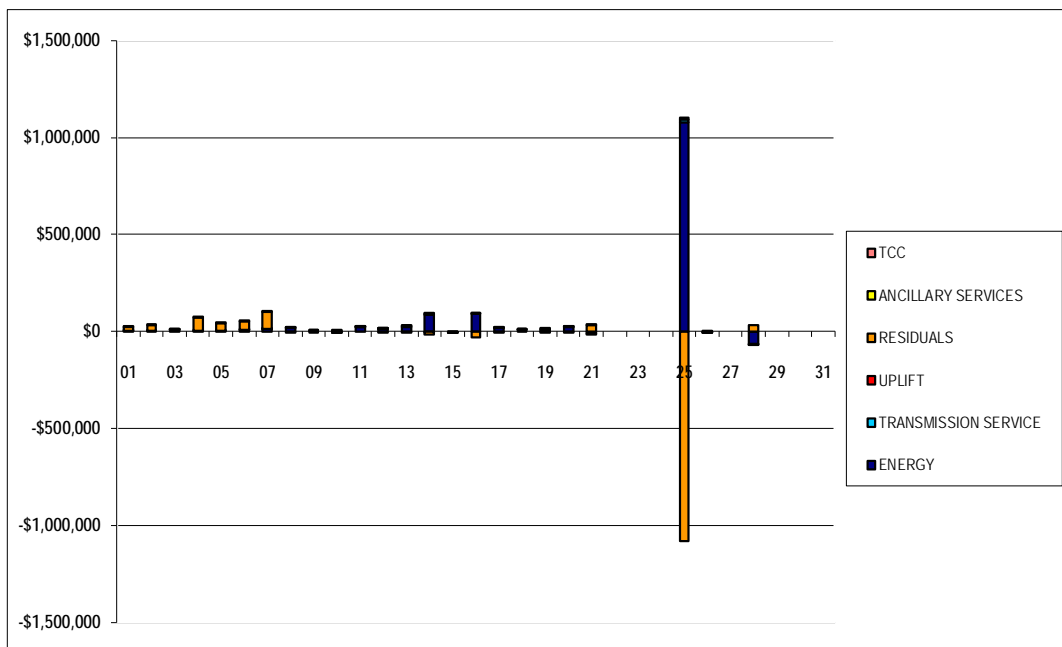
	MONDAY	TUESDAY	WEDNESDAY	THURSDAY	FRIDAY	SATURDAY	SUNDAY
						1	2
DAM ENERGY						\$0.01	\$0.00
DAM LOSSES						\$0.00	\$0.00
BALANCING ENERGY						\$18,620.57	\$28,990.31
BALANCING LOSSES						\$178.21	\$317.94
BALANCING CONGESTION						\$735.47	\$92.68
FINANCIAL IMPACT CHARGE						\$0.00	\$0.00
	3	4	5	6	7	8	9
DAM ENERGY	(\$0.01)	\$0.00	(\$0.01)	(\$0.01)	\$0.00	\$0.00	\$0.01
DAM LOSSES	\$0.01	\$0.00	\$0.01	(\$0.01)	(\$0.01)	\$0.00	(\$0.01)
BALANCING ENERGY	\$139.16	\$59,212.34	\$31,289.17	\$37,882.81	\$56,241.41	(\$1,318.24)	(\$190.05)
BALANCING LOSSES	\$110.24	\$298.80	\$345.29	\$708.41	\$1,024.10	(\$114.60)	(\$9.21)
BALANCING CONGESTION	(\$85.99)	\$8,112.12	\$10,808.36	\$8,591.55	\$29,057.96	(\$763.26)	(\$1,251.82)
FINANCIAL IMPACT CHARGE	\$0.00	\$0.00	(\$0.01)	\$0.00	(\$0.11)	(\$0.02)	\$0.05
	10	11	12	13	14	15	16
DAM ENERGY	\$0.01	(\$0.01)	\$0.00	\$0.00	\$0.00	\$0.00	\$0.00
DAM LOSSES	(\$0.01)	\$0.00	\$0.00	\$0.00	\$0.01	\$0.00	\$0.00
BALANCING ENERGY	\$79.45	(\$70.03)	\$85.58	(\$13.51)	(\$3,997.14)	\$10.15	(\$27,814.35)
BALANCING LOSSES	\$38.54	\$313.79	\$103.43	(\$56.56)	(\$6,290.94)	(\$29.18)	(\$1,757.24)
BALANCING CONGESTION	\$147.75	(\$96.52)	(\$46.24)	(\$604.89)	(\$5,339.98)	\$1.49	(\$1,818.25)
FINANCIAL IMPACT CHARGE	\$0.00	\$0.00	\$0.02	\$0.00	\$0.00	\$0.00	\$0.00
	17	18	19	20	21	22	23
DAM ENERGY	\$0.01	\$0.00	\$0.00	\$0.00	\$0.00	\$0.00	\$0.00
DAM LOSSES	\$0.00	\$0.01	\$0.00	\$0.00	\$0.00	\$0.00	\$0.00
BALANCING ENERGY	(\$58.42)	\$42.34	\$40.44	(\$111.72)	\$31,290.76	\$0.00	\$0.00
BALANCING LOSSES	(\$25.46)	\$79.96	\$46.35	\$122.70	\$2,173.06	\$0.00	\$0.00
BALANCING CONGESTION	(\$366.95)	\$754.24	(\$790.86)	(\$408.82)	\$817.92	\$0.00	\$0.00
FINANCIAL IMPACT CHARGE	\$0.00	\$0.03	\$0.00	\$0.00	\$0.00	\$0.00	\$0.00
	24	25	26	27	28	29	30
DAM ENERGY	\$0.00	(\$0.01)	\$0.00	\$0.00	(\$0.01)	\$0.00	\$0.00
DAM LOSSES	\$0.00	\$0.00	\$0.00	\$0.00	\$0.00	\$0.00	\$0.00
BALANCING ENERGY	\$0.00	(\$789,632.81)	(\$0.26)	\$0.14	\$25,294.17	\$0.00	\$0.00
BALANCING LOSSES	\$0.00	(\$59,350.32)	\$0.85	(\$0.01)	\$2,923.51	\$0.00	\$0.00
BALANCING CONGESTION	\$0.00	(\$231,040.90)	\$6.09	\$0.01	\$4,384.16	\$0.00	\$0.00
FINANCIAL IMPACT CHARGE	\$0.00	\$0.00	\$0.00	\$0.00	\$0.03	\$0.00	\$0.00
	31						
DAM ENERGY	\$0.00						
DAM LOSSES	\$0.00						
BALANCING ENERGY	\$0.00						
BALANCING LOSSES	\$0.00						
BALANCING CONGESTION	\$0.00						
FINANCIAL IMPACT CHARGE	\$0.00						



SETTLEMENTS REPORT
January 2022 Settlement Adjustment
February 7, 2022

Initial – Market Costs Delta Analysis

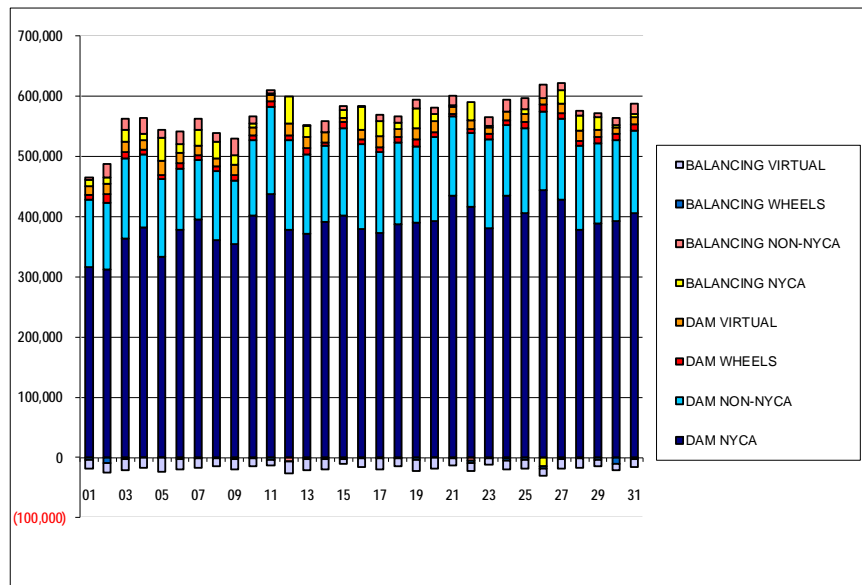
	MONDAY	TUESDAY	WEDNESDAY	THURSDAY	FRIDAY	SATURDAY	SUNDAY
						1	2
ENERGY						\$2,802.97	\$4,295.58
TRANSMISSION SERVICE						\$192.64	\$199.44
UPLIFT						\$0.00	\$0.00
RESIDUALS						\$19,534.26	\$29,400.93
ANCILLARY SERVICES						\$445.89	\$456.86
TCC						\$0.00	\$0.00
	3	4	5	6	7	8	9
ENERGY	\$6,419.55	\$4,671.33	\$1,819.41	\$6,311.60	\$12,684.77	\$16,060.79	\$2,190.15
TRANSMISSION SERVICE	\$198.57	\$185.21	\$153.98	\$144.15	\$470.41	\$311.93	\$320.41
UPLIFT	\$0.00	\$0.01	\$0.00	\$0.02	\$0.02	\$0.00	(\$0.01)
RESIDUALS	\$163.41	\$67,623.26	\$42,442.81	\$47,182.75	\$86,323.35	(\$2,196.12)	(\$1,451.03)
ANCILLARY SERVICES	\$201.30	\$441.92	\$410.52	\$400.60	\$743.19	\$312.00	\$333.99
TCC	\$0.00	\$0.00	\$0.00	\$0.00	\$0.00	\$0.00	\$0.00
	10	11	12	13	14	15	16
ENERGY	\$3,551.70	\$23,203.07	\$13,452.49	\$25,109.03	\$87,296.36	(\$1,481.64)	\$90,792.72
TRANSMISSION SERVICE	(\$189.94)	\$272.65	\$322.78	\$647.80	\$2,511.65	(\$14.84)	\$515.72
UPLIFT	(\$10.67)	\$0.02	(\$93.05)	\$0.01	(\$11.59)	(\$0.02)	(\$0.02)
RESIDUALS	\$265.74	\$147.23	\$142.79	(\$674.96)	(\$15,628.05)	(\$17.54)	(\$31,389.84)
ANCILLARY SERVICES	(\$176.89)	\$290.94	\$334.91	\$670.49	\$2,369.30	(\$12.37)	\$493.90
TCC	\$0.00	\$0.00	\$0.00	\$0.00	\$0.00	\$0.00	\$0.00
	17	18	19	20	21	22	23
ENERGY	\$16,555.15	\$8,502.63	\$10,774.26	\$25,122.88	(\$10,325.83)	\$0.00	\$0.00
TRANSMISSION SERVICE	\$399.76	\$323.72	\$355.25	\$380.53	(\$44.73)	\$0.00	\$0.00
UPLIFT	\$0.01	\$32.07	\$0.00	(\$0.01)	(\$0.01)	\$0.00	\$0.00
RESIDUALS	(\$450.82)	\$876.58	(\$704.07)	(\$397.84)	\$34,281.74	\$0.00	\$0.00
ANCILLARY SERVICES	\$404.41	\$350.19	\$359.67	\$384.94	\$93.32	\$0.00	\$0.00
TCC	\$0.00	\$0.00	\$0.00	\$0.00	\$0.00	\$0.00	\$0.00
	24	25	26	27	28	29	30
ENERGY	\$0.00	\$1,080,024.03	(\$106.21)	(\$0.18)	(\$61,975.17)	\$0.00	\$0.00
TRANSMISSION SERVICE	\$0.00	\$11,689.08	(\$1.19)	(\$0.01)	(\$485.33)	\$0.00	\$0.00
UPLIFT	\$0.00	(\$0.01)	\$0.00	\$0.01	\$0.01	\$0.00	\$0.00
RESIDUALS	\$0.00	(\$1,080,024.04)	\$6.68	\$0.14	\$32,601.86	\$0.00	\$0.00
ANCILLARY SERVICES	\$0.00	\$9,457.36	(\$0.57)	\$0.00	(\$445.49)	\$0.00	\$0.00
TCC	\$0.00	\$0.00	\$0.00	\$0.00	\$0.00	\$0.00	\$0.00
	31						
ENERGY	\$0.00						
TRANSMISSION SERVICE	\$0.00						
UPLIFT	\$0.00						
RESIDUALS	\$0.00						
ANCILLARY SERVICES	\$0.00						
TCC	\$0.00						



SETTLEMENTS REPORT
January 2022 Settlement Adjustment
February 7, 2022

Weekly Settlement – Market Supply Analysis

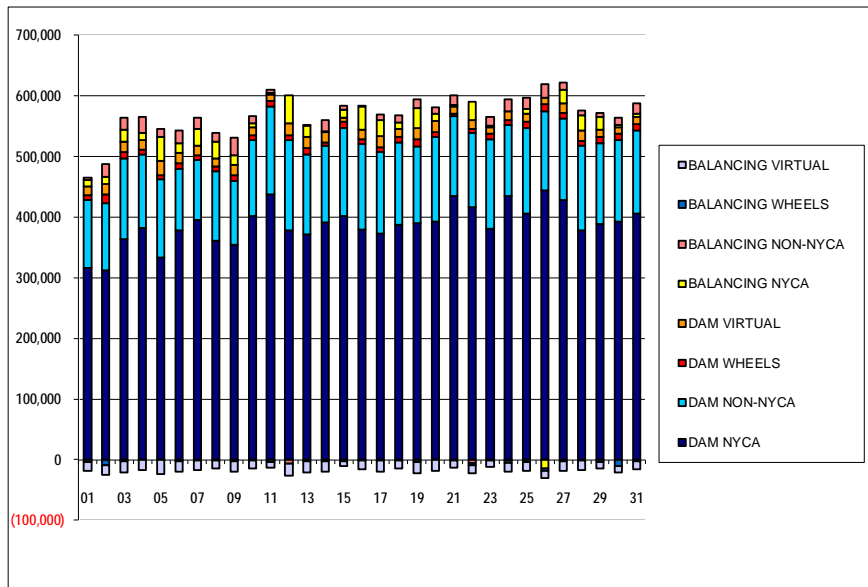
	MONDAY	TUESDAY	WEDNESDAY	THURSDAY	FRIDAY	SATURDAY	SUNDAY
						1	2
DAM NYCA						316,438	311,908
DAM NON-NYCA						111,825	111,662
DAM WHEELS						8,406	14,361
DAM VIRTUAL						13,635	16,370
BALANCING NYCA						10,264	11,412
BALANCING NON-NYCA						4,269	21,479
BALANCING WHEELS						(4,334)	(8,793)
BALANCING VIRTUAL						(13,635)	(16,370)
	3	4	5	6	7	8	9
DAM NYCA	364,089	382,639	333,695	378,697	395,479	360,393	354,812
DAM NON-NYCA	133,283	120,248	128,621	100,960	98,066	114,726	104,881
DAM WHEELS	9,770	7,868	7,204	9,534	8,285	8,071	9,583
DAM VIRTUAL	17,827	16,584	23,551	16,947	16,187	14,058	17,439
BALANCING NYCA	19,133	10,620	38,138	14,285	25,709	26,666	15,590
BALANCING NON-NYCA	19,103	25,859	12,917	21,535	18,638	14,722	27,864
BALANCING WHEELS	(3,292)	(668)	(4)	(2,334)	(1,085)	(871)	(2,833)
BALANCING VIRTUAL	(17,827)	(16,584)	(23,551)	(16,947)	(16,187)	(14,058)	(17,439)
	10	11	12	13	14	15	16
DAM NYCA	401,211	437,792	378,182	371,714	391,033	401,516	380,014
DAM NON-NYCA	125,436	144,149	149,038	131,998	126,722	145,538	140,584
DAM WHEELS	8,251	9,998	7,810	10,180	5,088	9,867	8,346
DAM VIRTUAL	13,648	9,628	19,413	17,988	17,155	7,468	14,765
BALANCING NYCA	6,386	3,560	45,730	18,648	876	13,386	38,216
BALANCING NON-NYCA	11,800	5,207	(6,579)	91	17,661	5,360	381
BALANCING WHEELS	(1,051)	(3,598)	(610)	(2,980)	(2,988)	(2,667)	(1,221)
BALANCING VIRTUAL	(13,648)	(9,628)	(19,413)	(17,988)	(17,155)	(7,468)	(14,765)
	17	18	19	20	21	22	23
DAM NYCA	372,898	387,860	390,109	392,592	435,147	415,885	380,927
DAM NON-NYCA	133,983	135,653	126,730	140,328	130,939	123,319	147,852
DAM WHEELS	8,551	8,709	11,194	7,300	3,846	6,618	8,460
DAM VIRTUAL	18,623	13,572	18,501	18,665	11,907	13,823	11,252
BALANCING NYCA	25,267	10,250	33,033	11,570	2,665	30,369	2,860
BALANCING NON-NYCA	9,476	11,096	14,396	10,318	16,780	(5,835)	13,850
BALANCING WHEELS	(1,351)	(1,509)	(4,144)	(55)	(1,778)	(2,968)	(1,260)
BALANCING VIRTUAL	(18,623)	(13,572)	(18,501)	(18,665)	(11,907)	(13,823)	(11,252)
	24	25	26	27	28	29	30
DAM NYCA	434,390	406,392	444,257	428,160	378,005	388,804	392,834
DAM NON-NYCA	117,473	139,980	130,347	135,010	140,236	133,423	133,722
DAM WHEELS	7,742	10,513	11,422	9,076	7,974	10,548	10,741
DAM VIRTUAL	14,627	14,252	10,959	16,066	16,884	11,568	10,204
BALANCING NYCA	(1,649)	7,056	(14,455)	21,752	24,548	20,322	4,032
BALANCING NON-NYCA	20,483	18,519	22,792	12,358	7,817	7,473	12,617
BALANCING WHEELS	(4,142)	(4,213)	(4,472)	(2,204)	(774)	(3,423)	(10,405)
BALANCING VIRTUAL	(14,627)	(14,252)	(10,959)	(16,066)	(16,884)	(11,568)	(10,204)
	31						
DAM NYCA	405,615						
DAM NON-NYCA	136,764						
DAM WHEELS	10,370						
DAM VIRTUAL	12,137						
BALANCING NYCA	6,284						
BALANCING NON-NYCA	15,959						
BALANCING WHEELS	(3,170)						
BALANCING VIRTUAL	(12,137)						



SETTLEMENTS REPORT
January 2022 Settlement Adjustment
February 7, 2022

Initial Settlement Adjustment – Market Supply Analysis

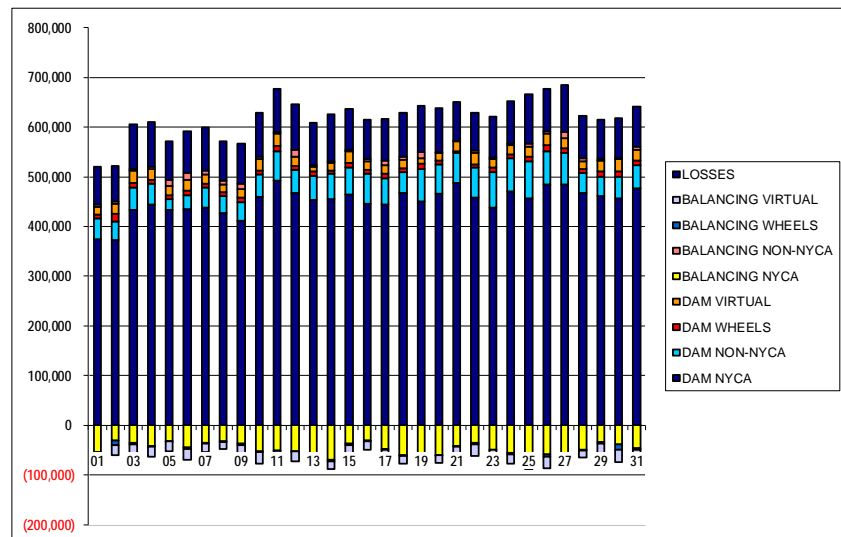
	MONDAY	TUESDAY	WEDNESDAY	THURSDAY	FRIDAY	SATURDAY	SUNDAY
						1	2
DAM NYCA						316,438	311,908
DAM NON-NYCA						111,825	111,662
DAM WHEELS						8,406	14,361
DAM VIRTUAL						13,635	16,370
BALANCING NYCA						11,178	12,347
BALANCING NON-NYCA						4,269	21,479
BALANCING WHEELS						(4,334)	(8,793)
BALANCING VIRTUAL						(13,635)	(16,370)
	3	4	5	6	7	8	9
DAM NYCA	364,089	382,639	333,695	378,697	395,479	360,393	354,812
DAM NON-NYCA	133,283	120,248	128,621	100,960	98,066	114,726	104,881
DAM WHEELS	9,770	7,868	7,204	9,534	8,285	8,071	9,583
DAM VIRTUAL	17,827	16,584	23,551	16,947	16,187	14,058	17,439
BALANCING NYCA	19,259	11,545	39,041	15,185	26,858	26,853	15,777
BALANCING NON-NYCA	19,103	25,859	12,917	21,535	18,638	14,722	27,864
BALANCING WHEELS	(3,292)	(668)	(4)	(2,334)	(1,085)	(871)	(2,383)
BALANCING VIRTUAL	(17,827)	(16,584)	(23,551)	(16,947)	(16,187)	(14,058)	(17,439)
	10	11	12	13	14	15	16
DAM NYCA	401,211	437,792	378,182	371,714	391,033	401,516	380,014
DAM NON-NYCA	125,436	144,149	149,038	131,998	126,722	145,538	140,584
DAM WHEELS	8,251	9,998	7,810	10,180	5,088	9,867	8,346
DAM VIRTUAL	13,648	9,628	19,413	17,988	17,155	7,468	14,765
BALANCING NYCA	6,267	3,735	45,937	19,063	1,869	13,376	38,459
BALANCING NON-NYCA	11,800	5,207	(6,579)	91	17,661	5,360	381
BALANCING WHEELS	(1,051)	(3,598)	(610)	(2,980)	(2,988)	(2,667)	(1,221)
BALANCING VIRTUAL	(13,648)	(9,628)	(19,413)	(17,988)	(17,155)	(7,468)	(14,765)
	17	18	19	20	21	22	23
DAM NYCA	372,898	387,860	390,109	392,592	435,147	415,885	380,927
DAM NON-NYCA	133,983	135,653	126,730	140,328	130,939	123,319	147,852
DAM WHEELS	8,551	8,709	11,194	7,300	3,846	6,618	8,460
DAM VIRTUAL	18,623	13,572	18,501	18,665	11,907	13,823	11,252
BALANCING NYCA	25,523	10,458	33,262	11,814	2,794	30,369	2,860
BALANCING NON-NYCA	9,476	11,096	14,396	10,318	16,780	(5,835)	13,850
BALANCING WHEELS	(1,351)	(1,509)	(4,144)	(55)	(1,778)	(2,968)	(1,260)
BALANCING VIRTUAL	(18,623)	(13,572)	(18,501)	(18,665)	(11,907)	(13,823)	(11,252)
	24	25	26	27	28	29	30
DAM NYCA	434,390	406,392	444,257	428,160	378,005	388,804	392,834
DAM NON-NYCA	117,473	139,980	130,347	135,010	140,236	133,423	133,722
DAM WHEELS	7,742	10,513	11,422	9,076	7,974	10,548	10,741
DAM VIRTUAL	14,627	14,252	10,959	16,066	16,884	11,568	10,204
BALANCING NYCA	(1,649)	7,056	(14,456)	21,752	24,381	20,322	4,032
BALANCING NON-NYCA	20,483	18,519	22,792	12,358	7,817	7,473	12,617
BALANCING WHEELS	(4,142)	(4,213)	(4,472)	(2,204)	(774)	(3,423)	(10,405)
BALANCING VIRTUAL	(14,627)	(14,252)	(10,959)	(16,066)	(16,884)	(11,568)	(10,204)
	31						
DAM NYCA	405,615						
DAM NON-NYCA	136,764						
DAM WHEELS	10,370						
DAM VIRTUAL	12,137						
BALANCING NYCA	6,284						
BALANCING NON-NYCA	15,959						
BALANCING WHEELS	(3,170)						
BALANCING VIRTUAL	(12,137)						



SETTLEMENTS REPORT
January 2022 Settlement Adjustment
February 7, 2022

Weekly Settlement – Market Withdrawals Analysis

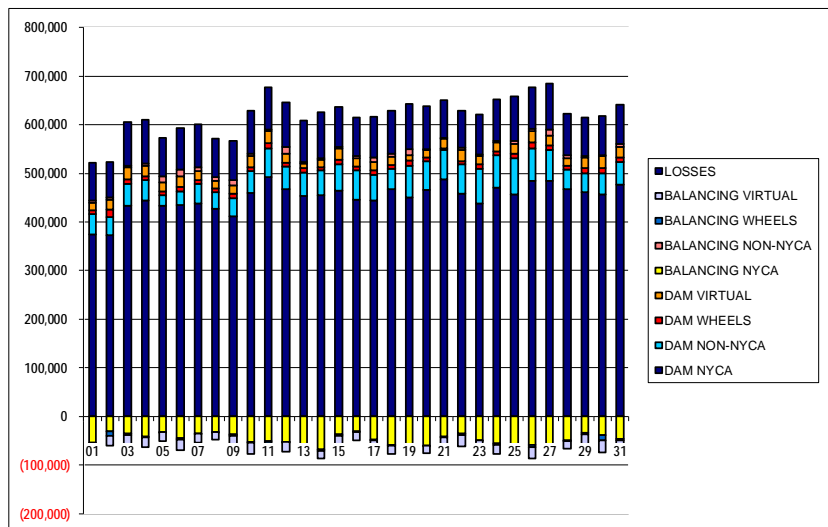
	MONDAY	TUESDAY	WEDNESDAY	THURSDAY	FRIDAY	SATURDAY	SUNDAY
						1	2
DAM NYCA						373,662	373,236
DAM NON-NYCA						41,942	37,319
DAM WHEELS						8,406	14,361
DAM VIRTUAL						15,436	20,334
BALANCING NYCA						(53,636)	(30,884)
BALANCING NON-NYCA						4,077	5,206
BALANCING WHEELS						(4,334)	(8,793)
BALANCING VIRTUAL						(15,436)	(20,334)
UFE/LOSSES						76,752	71,584
	3	4	5	6	7	8	9
DAM NYCA	433,715	444,725	432,865	435,181	438,725	427,155	412,179
DAM NON-NYCA	44,385	41,329	22,006	26,865	39,729	34,151	36,388
DAM WHEELS	9,770	7,868	7,204	9,534	8,285	8,071	9,583
DAM VIRTUAL	25,191	21,225	18,748	21,960	18,443	15,157	17,462
BALANCING NYCA	(35,444)	(41,677)	(32,694)	(44,672)	(34,948)	(31,977)	(37,013)
BALANCING NON-NYCA	1,712	5,312	13,336	13,659	6,862	7,764	10,656
BALANCING WHEELS	(3,292)	(668)	(4)	(2,334)	(1,085)	(871)	(2,383)
BALANCING VIRTUAL	(25,191)	(21,225)	(18,748)	(21,960)	(18,443)	(15,157)	(17,462)
UFE/LOSSES	91,241	89,677	77,859	84,443	87,524	79,413	80,938
	10	11	12	13	14	15	16
DAM NYCA	460,448	491,817	468,083	454,045	455,237	464,490	445,455
DAM NON-NYCA	44,106	59,787	45,481	46,909	51,535	53,490	60,829
DAM WHEELS	8,251	9,998	7,810	10,180	5,088	9,867	8,346
DAM VIRTUAL	23,218	25,720	19,562	9,525	15,640	23,351	17,036
BALANCING NYCA	(52,099)	(51,117)	(52,243)	(66,979)	(68,681)	(36,829)	(31,006)
BALANCING NON-NYCA	4,710	2,801	13,675	2,347	4,198	3,232	3,832
BALANCING WHEELS	(1,051)	(3,598)	(610)	(2,980)	(2,988)	(2,667)	(1,221)
BALANCING VIRTUAL	(23,218)	(25,720)	(19,562)	(9,525)	(15,640)	(23,351)	(17,036)
UFE/LOSSES	87,667	87,421	91,375	86,129	94,003	81,418	80,086
	17	18	19	20	21	22	23
DAM NYCA	444,726	466,884	450,197	466,197	487,231	458,582	438,328
DAM NON-NYCA	52,217	42,058	65,443	59,235	60,281	60,333	71,257
DAM WHEELS	8,551	8,709	11,194	7,300	3,846	6,618	8,460
DAM VIRTUAL	17,509	16,594	9,847	14,820	20,183	22,893	18,308
BALANCING NYCA	(48,026)	(59,299)	(57,862)	(60,554)	(40,922)	(35,682)	(48,373)
BALANCING NON-NYCA	9,312	6,437	12,455	2,744	826	4,092	2,022
BALANCING WHEELS	(1,351)	(1,509)	(4,144)	(55)	(1,778)	(2,968)	(1,260)
BALANCING VIRTUAL	(17,509)	(16,594)	(9,847)	(14,820)	(20,183)	(22,893)	(18,308)
UFE/LOSSES	83,396	88,778	94,035	87,186	78,115	76,414	82,255
	24	25	26	27	28	29	30
DAM NYCA	470,278	456,412	484,995	484,005	467,414	461,938	456,615
DAM NON-NYCA	67,232	73,959	66,747	64,245	40,751	38,466	43,672
DAM WHEELS	7,742	10,513	11,422	9,076	7,974	10,548	10,741
DAM VIRTUAL	18,392	19,609	23,839	19,668	15,012	21,438	24,970
BALANCING NYCA	(54,686)	(64,355)	(58,515)	(59,101)	(49,320)	(33,218)	(38,441)
BALANCING NON-NYCA	3,147	6,541	3,967	13,421	5,741	3,587	2,020
BALANCING WHEELS	(4,142)	(4,213)	(4,472)	(2,204)	(774)	(3,423)	(10,405)
BALANCING VIRTUAL	(18,392)	(19,609)	(23,839)	(19,668)	(15,012)	(21,438)	(24,970)
UFE/LOSSES	84,726	99,391	85,748	94,709	86,021	79,249	79,340
	31						
DAM NYCA	476,481						
DAM NON-NYCA	46,487						
DAM WHEELS	10,370						
DAM VIRTUAL	20,684						
BALANCING NYCA	(45,448)						
BALANCING NON-NYCA	5,827						
BALANCING WHEELS	(3,170)						
BALANCING VIRTUAL	(20,684)						
UFE/LOSSES	81,275						



SETTLEMENTS REPORT
January 2022 Settlement Adjustment
February 7, 2022

Initial Settlement Adjustment – Market Withdrawals Analysis

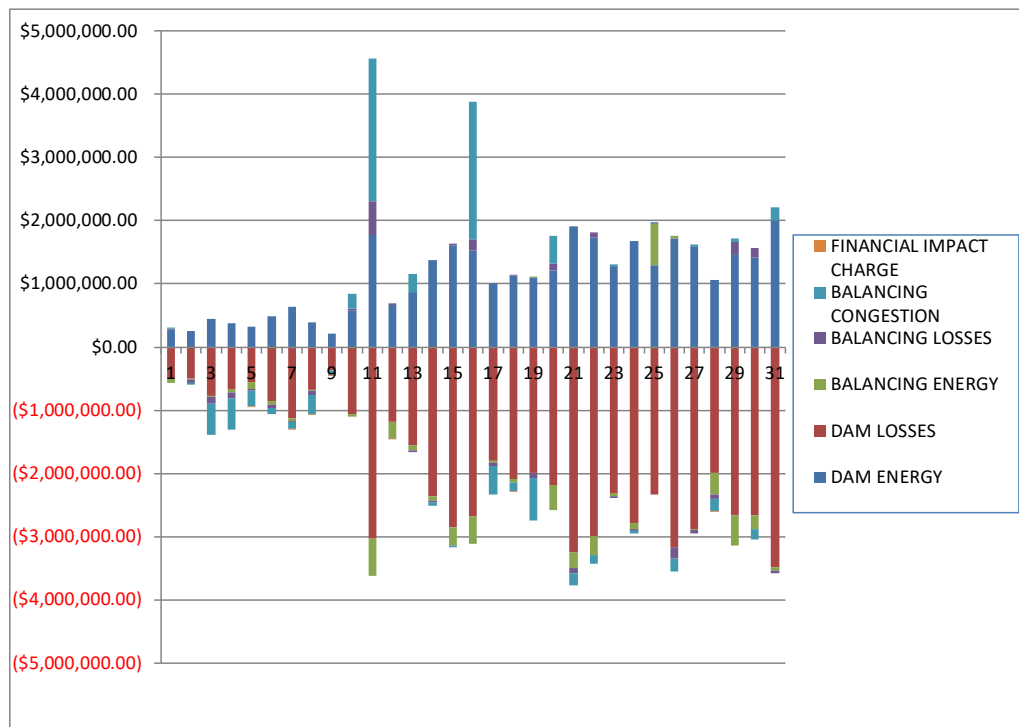
	MONDAY	TUESDAY	WEDNESDAY	THURSDAY	FRIDAY	SATURDAY	SUNDAY
						1	2
DAM NYCA						373,662	373,236
DAM NON-NYCA						41,942	37,319
DAM WHEELS						8,406	14,361
DAM VIRTUAL						15,436	20,334
BALANCING NYCA						(53,513)	(30,756)
BALANCING NON-NYCA						4,077	5,206
BALANCING WHEELS						(4,334)	(8,793)
BALANCING VIRTUAL						(15,436)	(20,334)
UFE/LOSSES						77,543	72,392
	3	4	5	6	7	8	9
DAM NYCA	433,715	444,725	432,865	435,181	438,725	427,155	412,179
DAM NON-NYCA	44,385	41,329	22,006	26,865	39,729	34,151	36,388
DAM WHEELS	9,770	7,868	7,204	9,534	8,285	8,071	9,583
DAM VIRTUAL	25,191	21,225	18,748	21,960	18,443	15,157	17,462
BALANCING NYCA	(35,317)	(41,558)	(32,596)	(44,580)	(34,646)	(31,777)	(36,808)
BALANCING NON-NYCA	1,712	5,312	13,336	13,659	6,862	7,764	10,656
BALANCING WHEELS	(3,292)	(668)	(4)	(2,334)	(1,085)	(871)	(2,383)
BALANCING VIRTUAL	(25,191)	(21,225)	(18,748)	(21,960)	(18,443)	(15,157)	(17,462)
UFE/LOSSES	91,239	90,483	78,663	85,252	88,370	79,400	80,919
	10	11	12	13	14	15	16
DAM NYCA	460,448	491,817	468,083	454,045	455,237	464,490	445,455
DAM NON-NYCA	44,106	59,787	45,481	46,909	51,535	53,490	60,829
DAM WHEELS	8,251	9,998	7,810	10,180	5,088	9,867	8,346
DAM VIRTUAL	23,218	25,720	19,562	9,525	15,640	23,351	17,036
BALANCING NYCA	(52,220)	(50,943)	(52,036)	(66,563)	(67,071)	(36,839)	(30,676)
BALANCING NON-NYCA	4,710	2,801	13,675	2,347	4,198	3,232	3,832
BALANCING WHEELS	(1,051)	(3,598)	(610)	(2,980)	(2,988)	(2,667)	(1,221)
BALANCING VIRTUAL	(23,218)	(25,720)	(19,562)	(9,525)	(15,640)	(23,351)	(17,036)
UFE/LOSSES	87,670	87,421	91,375	86,130	93,386	81,418	79,998
	17	18	19	20	21	22	23
DAM NYCA	444,726	466,884	450,197	466,197	487,231	458,582	438,328
DAM NON-NYCA	52,217	42,058	65,443	59,235	60,281	60,333	71,257
DAM WHEELS	8,551	8,709	11,194	7,300	3,846	6,618	8,460
DAM VIRTUAL	17,509	16,594	9,847	14,820	20,183	22,893	18,308
BALANCING NYCA	(47,770)	(59,091)	(57,635)	(60,311)	(40,950)	(35,682)	(48,373)
BALANCING NON-NYCA	9,312	6,437	12,455	2,744	826	4,092	2,022
BALANCING WHEELS	(1,351)	(1,509)	(4,144)	(55)	(1,778)	(2,968)	(1,260)
BALANCING VIRTUAL	(17,509)	(16,594)	(9,847)	(14,820)	(20,183)	(22,893)	(18,308)
UFE/LOSSES	83,396	88,778	94,036	87,186	78,273	76,414	82,255
	24	25	26	27	28	29	30
DAM NYCA	470,278	456,412	484,995	484,005	467,414	461,938	456,615
DAM NON-NYCA	67,232	73,959	66,747	64,245	40,751	38,466	43,672
DAM WHEELS	7,742	10,513	11,422	9,076	7,974	10,548	10,741
DAM VIRTUAL	18,392	19,609	23,839	19,668	15,012	21,438	24,970
BALANCING NYCA	(54,686)	(56,862)	(58,516)	(59,101)	(49,631)	(33,218)	(38,441)
BALANCING NON-NYCA	3,147	6,541	3,967	13,421	5,741	3,587	2,020
BALANCING WHEELS	(4,142)	(4,213)	(4,472)	(2,204)	(774)	(3,423)	(10,405)
BALANCING VIRTUAL	(18,392)	(19,609)	(23,839)	(19,668)	(15,012)	(21,438)	(24,970)
UFE/LOSSES	84,726	91,898	85,748	94,709	86,165	79,249	79,340
	31						
DAM NYCA	476,481						
DAM NON-NYCA	46,487						
DAM WHEELS	10,370						
DAM VIRTUAL	20,684						
BALANCING NYCA	(45,448)						
BALANCING NON-NYCA	5,827						
BALANCING WHEELS	(3,170)						
BALANCING VIRTUAL	(20,684)						
UFE/LOSSES	81,275						



SETTLEMENTS REPORT
January 2022 Settlement Adjustment
February 7, 2022

Weekly Settlement – Market Residuals Analysis

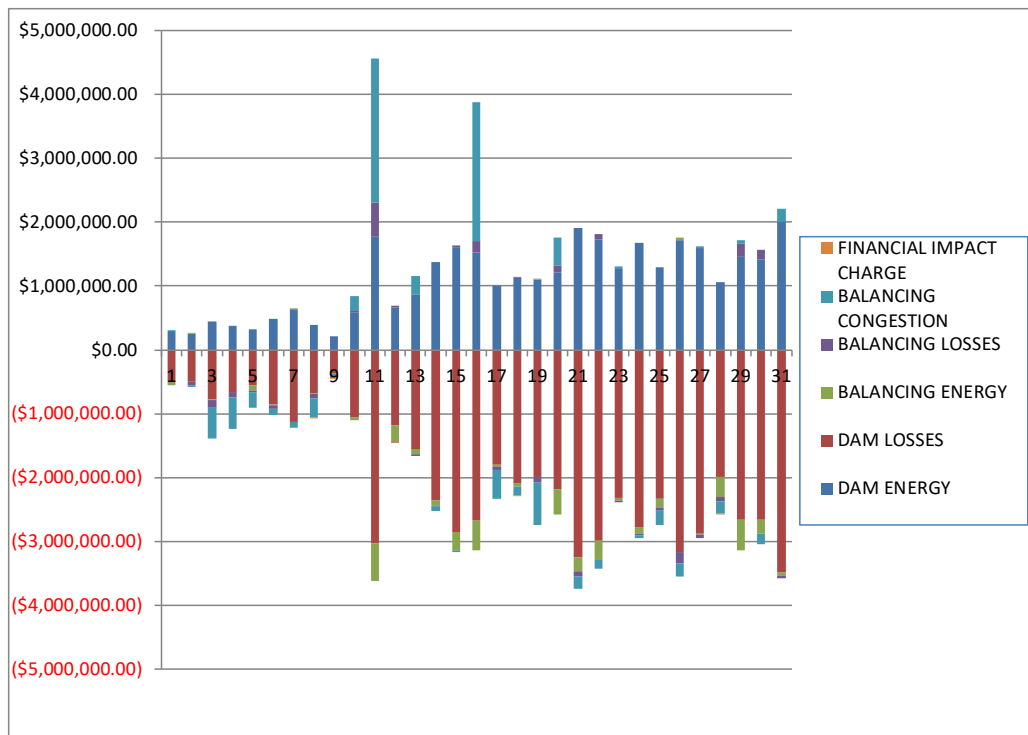
	MONDAY	TUESDAY	WEDNESDAY	THURSDAY	FRIDAY	SATURDAY	SUNDAY
						1	2
DAM ENERGY						\$282,838.17	\$255,144.11
DAM LOSSES						(\$502,564.89)	(\$498,379.50)
BALANCING ENERGY						(\$63,850.36)	(\$14,337.30)
BALANCING LOSSES						\$9,565.21	(\$55,828.17)
BALANCING CONGESTION						\$5,017.75	(\$23,312.58)
FINANCIAL IMPACT CHARGE						\$0.00	\$0.00
	3	4	5	6	7	8	9
DAM ENERGY	\$438,757.46	\$381,025.33	\$319,247.22	\$490,402.67	\$635,352.05	\$386,779.97	\$210,200.20
DAM LOSSES	(\$776,047.07)	(\$662,081.17)	(\$552,365.63)	(\$855,134.41)	(\$1,124,926.02)	(\$673,994.85)	(\$369,264.08)
BALANCING ENERGY	(\$12,916.70)	(\$61,209.74)	(\$113,445.15)	(\$57,262.48)	(\$45,604.89)	(\$20,424.85)	(\$7,666.27)
BALANCING LOSSES	(\$101,727.82)	(\$88,806.52)	(\$23,756.79)	(\$46,138.30)	(\$10,679.71)	(\$59,975.48)	(\$3,382.97)
BALANCING CONGESTION	(\$498,337.10)	(\$498,956.88)	(\$247,252.94)	(\$105,545.72)	(\$107,076.85)	(\$301,597.24)	(\$57,936.93)
FINANCIAL IMPACT CHARGE	\$0.00	\$0.00	(\$2,840.09)	\$0.00	(\$4,494.40)	(\$88.85)	(\$6,293.99)
	10	11	12	13	14	15	16
DAM ENERGY	\$588,382.43	\$1,772,356.45	\$670,457.05	\$865,003.94	\$1,372,210.41	\$1,611,002.08	\$1,532,534.68
DAM LOSSES	(\$1,057,324.74)	(\$3,038,215.28)	(\$1,179,442.85)	(\$1,557,371.97)	(\$2,357,553.60)	(\$2,847,257.64)	(\$2,672,254.33)
BALANCING ENERGY	(\$39,626.63)	(\$580,447.43)	(\$260,723.97)	(\$78,906.89)	(\$77,465.25)	(\$292,404.81)	(\$447,350.41)
BALANCING LOSSES	\$26,159.29	\$535,557.32	\$17,446.45	(\$25,538.33)	(\$16,249.85)	\$24,974.11	\$175,369.67
BALANCING CONGESTION	\$221,667.70	\$2,252,752.94	(\$8,253.24)	\$289,659.81	(\$54,090.05)	(\$22,259.52)	\$2,179,539.87
FINANCIAL IMPACT CHARGE	\$0.00	\$0.00	(\$2,197.96)	\$0.00	\$0.00	\$0.00	\$0.00
	17	18	19	20	21	22	23
DAM ENERGY	\$1,005,038.65	\$1,123,900.40	\$1,101,100.58	\$1,214,052.91	\$1,903,102.32	\$1,724,974.83	\$1,279,149.24
DAM LOSSES	(\$1,805,301.59)	(\$2,084,309.47)	(\$1,989,991.24)	(\$2,184,189.15)	(\$3,251,880.42)	(\$2,994,175.80)	(\$2,317,925.20)
BALANCING ENERGY	(\$16,751.81)	(\$64,293.15)	\$8,009.31	(\$398,076.92)	(\$248,878.44)	(\$296,444.83)	(\$36,748.75)
BALANCING LOSSES	(\$65,261.05)	\$2,549.23	(\$81,522.85)	\$108,794.80	(\$80,517.06)	\$95,015.12	(\$37,969.58)
BALANCING CONGESTION	(\$444,944.67)	(\$132,004.02)	(\$676,469.25)	\$437,316.35	(\$190,354.66)	(\$142,859.26)	\$29,406.92
FINANCIAL IMPACT CHARGE	\$0.00	(\$13,764.44)	\$0.00	\$0.00	\$0.00	\$0.00	\$0.00
	24	25	26	27	28	29	30
DAM ENERGY	\$1,676,746.92	\$1,297,872.01	\$1,722,882.71	\$1,590,291.38	\$1,060,262.03	\$1,463,853.52	\$1,414,380.32
DAM LOSSES	(\$2,781,646.67)	(\$2,334,161.72)	(\$3,174,738.58)	(\$2,877,815.16)	(\$1,987,318.12)	(\$2,663,198.07)	(\$2,659,144.45)
BALANCING ENERGY	(\$105,805.40)	\$658,954.05	\$31,665.93	(\$20,336.78)	(\$342,884.47)	(\$477,674.26)	(\$217,525.62)
BALANCING LOSSES	(\$24,986.54)	\$13,884.90	(\$166,608.25)	(\$54,397.49)	(\$70,522.08)	\$203,652.42	\$156,138.43
BALANCING CONGESTION	(\$33,822.67)	\$2,864.81	(\$214,739.76)	\$32,490.56	(\$198,903.64)	\$43,873.26	(\$164,010.92)
FINANCIAL IMPACT CHARGE	\$0.00	\$0.00	\$0.00	\$0.00	(\$1,407.20)	\$0.00	\$0.00
	31						
DAM ENERGY	\$1,999,215.66						
DAM LOSSES	(\$3,486,361.82)						
BALANCING ENERGY	(\$55,890.20)						
BALANCING LOSSES	(\$36,070.72)						
BALANCING CONGESTION	\$215,401.44						
FINANCIAL IMPACT CHARGE	\$0.00						



SETTLEMENTS REPORT
January 2022 Settlement Adjustment
February 7, 2022

Initial Settlement Adjustment – Market Residuals Analysis

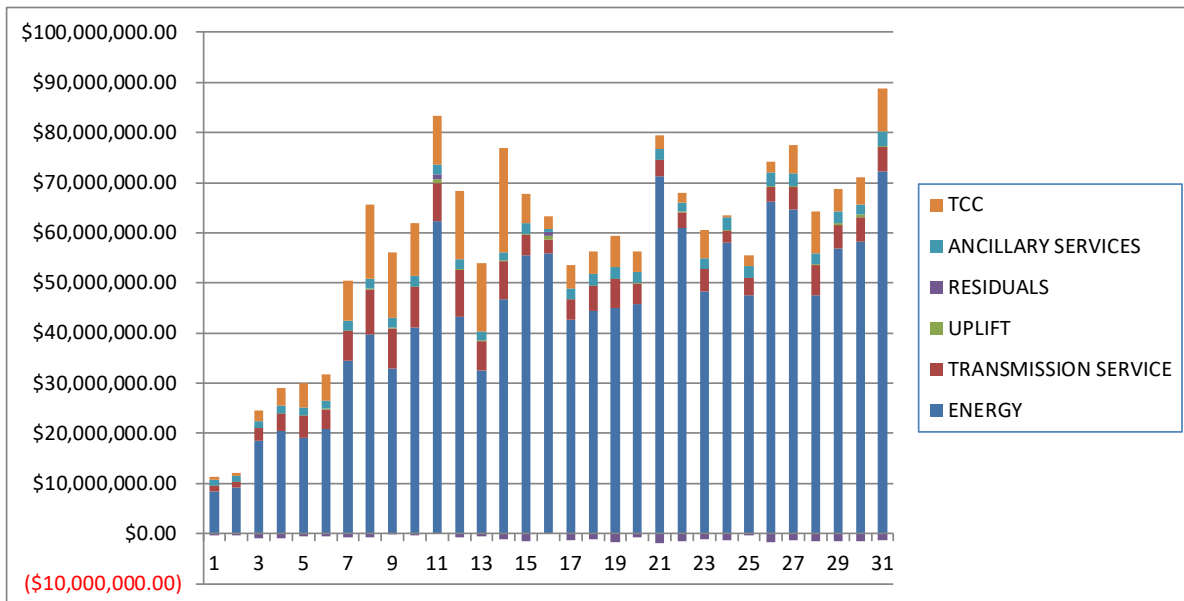
	MONDAY	TUESDAY	WEDNESDAY	THURSDAY	FRIDAY	SATURDAY	SUNDAY
						1	2
DAM ENERGY						\$282,838.18	\$255,144.11
DAM LOSSES						(\$502,564.89)	(\$498,379.50)
BALANCING ENERGY						(\$45,229.79)	\$14,653.01
BALANCING LOSSES						\$9,743.42	(\$55,510.23)
BALANCING CONGESTION						\$5,753.22	(\$23,219.90)
FINANCIAL IMPACT CHARGE						\$0.00	\$0.00
	3	4	5	6	7	8	9
DAM ENERGY	\$438,757.45	\$381,025.33	\$319,247.21	\$490,402.66	\$635,352.05	\$386,779.97	\$210,200.21
DAM LOSSES	(\$776,047.06)	(\$662,081.17)	(\$552,365.62)	(\$855,134.42)	(\$1,124,926.03)	(\$673,994.85)	(\$369,264.09)
BALANCING ENERGY	(\$12,777.54)	(\$1,997.40)	(\$82,155.98)	(\$19,379.67)	\$10,636.52	(\$21,743.09)	(\$7,856.32)
BALANCING LOSSES	(\$101,617.58)	(\$88,507.72)	(\$23,411.50)	(\$45,429.89)	(\$9,655.61)	(\$60,090.08)	(\$3,392.18)
BALANCING CONGESTION	(\$498,423.09)	(\$490,844.76)	(\$236,444.50)	(\$96,954.17)	(\$78,018.89)	(\$302,360.50)	(\$59,189.75)
FINANCIAL IMPACT CHARGE	\$0.00	\$0.00	(\$2,840.10)	\$0.00	(\$4,494.51)	(\$88.87)	(\$6,293.94)
	10	11	12	13	14	15	16
DAM ENERGY	\$588,382.44	\$1,772,356.44	\$670,457.05	\$865,003.94	\$1,372,210.41	\$1,611,002.08	\$1,532,534.68
DAM LOSSES	(\$1,057,324.75)	(\$3,038,215.28)	(\$1,179,442.85)	(\$1,557,371.97)	(\$2,357,553.59)	(\$2,847,257.64)	(\$2,672,254.33)
BALANCING ENERGY	(\$39,547.18)	(\$580,517.46)	(\$260,638.39)	(\$78,920.40)	(\$81,462.39)	(\$292,394.66)	(\$475,164.76)
BALANCING LOSSES	\$26,197.83	\$535,871.11	\$17,549.88	(\$25,594.89)	(\$22,540.79)	\$24,944.93	\$173,612.43
BALANCING CONGESTION	\$221,815.45	\$2,252,656.42	(\$8,299.48)	\$289,054.92	(\$59,430.03)	(\$22,258.03)	\$2,177,721.62
FINANCIAL IMPACT CHARGE	\$0.00	\$0.00	(\$2,197.94)	\$0.00	\$0.00	\$0.00	\$0.00
	17	18	19	20	21	22	23
DAM ENERGY	\$1,005,038.66	\$1,123,900.40	\$1,101,100.58	\$1,214,052.91	\$1,903,102.32	\$1,724,974.83	\$1,279,149.24
DAM LOSSES	(\$1,805,301.59)	(\$2,084,309.46)	(\$1,989,991.24)	(\$2,184,189.15)	(\$3,251,880.42)	(\$2,994,175.80)	(\$2,317,925.20)
BALANCING ENERGY	(\$16,810.23)	(\$64,250.81)	\$8,049.75	(\$398,188.64)	(\$217,587.68)	(\$296,444.83)	(\$36,748.75)
BALANCING LOSSES	(\$65,286.51)	\$2,629.19	(\$81,476.50)	\$108,917.50	(\$78,344.00)	\$95,015.12	(\$37,969.58)
BALANCING CONGESTION	(\$445,311.62)	(\$131,249.78)	(\$677,260.11)	\$436,907.53	(\$189,536.74)	(\$142,859.26)	\$29,406.92
FINANCIAL IMPACT CHARGE	\$0.00	(\$13,764.41)	\$0.00	\$0.00	\$0.00	\$0.00	\$0.00
	24	25	26	27	28	29	30
DAM ENERGY	\$1,676,746.92	\$1,297,872.00	\$1,722,882.71	\$1,590,291.38	\$1,060,262.02	\$1,463,853.52	\$1,414,380.32
DAM LOSSES	(\$2,781,646.67)	(\$2,334,161.72)	(\$3,174,738.58)	(\$2,877,815.16)	(\$1,987,318.12)	(\$2,663,198.07)	(\$2,659,144.45)
BALANCING ENERGY	(\$105,805.40)	(\$130,678.76)	\$31,665.67	(\$20,336.64)	(\$317,590.30)	(\$477,674.26)	(\$217,525.62)
BALANCING LOSSES	(\$24,986.54)	(\$45,465.42)	(\$166,607.40)	(\$54,397.50)	(\$67,598.57)	\$203,652.42	\$156,138.43
BALANCING CONGESTION	(\$33,822.67)	(\$228,176.09)	(\$214,733.67)	\$32,490.57	(\$194,519.48)	\$43,873.26	(\$164,010.92)
FINANCIAL IMPACT CHARGE	\$0.00	\$0.00	\$0.00	\$0.00	(\$1,407.17)	\$0.00	\$0.00
	31						
DAM ENERGY	\$1,999,215.66						
DAM LOSSES	(\$3,486,361.82)						
BALANCING ENERGY	(\$55,890.20)						
BALANCING LOSSES	(\$36,070.72)						
BALANCING CONGESTION	\$215,401.44						
FINANCIAL IMPACT CHARGE	\$0.00						



SETTLEMENTS REPORT
January 2022 Settlement Adjustment
February 7, 2022

Weekly Settlement – Market Costs Analysis

	MONDAY	TUESDAY	WEDNESDAY	THURSDAY	FRIDAY	SATURDAY	SUNDAY
						1	2
ENERGY						\$8,313,634.28	\$9,225,993.39
TRANSMISSION SERVICE						\$1,223,408.34	\$1,158,452.03
UPLIFT						\$12,737.34	\$22,773.74
RESIDUALS						(\$268,994.12)	(\$336,713.44)
ANCILLARY SERVICES						\$1,117,664.39	\$1,160,159.74
TCC						\$707,235.79	\$545,635.33
	3	4	5	6	7	8	9
ENERGY	\$18,580,313.86	\$20,419,194.41	\$19,135,083.27	\$20,828,412.57	\$34,517,129.86	\$39,713,255.20	\$32,830,127.01
TRANSMISSION SERVICE	\$2,430,329.71	\$3,511,603.05	\$4,410,864.40	\$4,008,723.04	\$6,032,635.08	\$8,920,047.73	\$8,065,377.28
UPLIFT	\$69,686.29	\$85,550.54	\$49,019.75	\$45,301.86	\$62,240.58	\$262,365.89	\$169,252.92
RESIDUALS	(\$950,271.23)	(\$930,028.98)	(\$620,413.38)	(\$573,678.24)	(\$657,429.82)	(\$669,301.30)	(\$234,344.04)
ANCILLARY SERVICES	\$1,384,093.36	\$1,471,888.61	\$1,498,759.60	\$1,592,774.43	\$1,779,803.71	\$1,850,002.43	\$1,991,403.67
TCC	\$2,034,949.39	\$3,637,272.13	\$4,997,539.79	\$5,215,412.55	\$8,035,896.15	\$14,816,523.45	\$13,036,457.67
	10	11	12	13	14	15	16
ENERGY	\$41,099,808.88	\$62,225,455.88	\$43,244,729.24	\$32,554,241.68	\$46,693,807.59	\$55,490,570.57	\$55,812,263.31
TRANSMISSION SERVICE	\$8,194,262.73	\$7,642,908.84	\$9,422,114.55	\$5,890,332.37	\$7,685,998.99	\$4,091,752.52	\$2,741,785.04
UPLIFT	\$69,233.62	\$781,728.49	\$112,183.67	\$62,533.15	\$171,506.72	\$217,552.92	\$892,462.38
RESIDUALS	(\$260,741.95)	\$942,004.00	(\$762,714.52)	(\$507,153.44)	(\$1,133,148.34)	(\$1,525,945.78)	\$767,839.48
ANCILLARY SERVICES	\$1,968,916.21	\$2,066,697.45	\$1,932,945.82	\$1,782,537.79	\$1,530,373.71	\$2,144,536.64	\$457,597.78
TCC	\$10,668,046.09	\$9,728,631.58	\$13,587,039.36	\$13,734,605.92	\$20,759,522.25	\$5,875,798.02	\$2,526,720.63
	17	18	19	20	21	22	23
ENERGY	\$42,592,478.26	\$44,450,664.83	\$45,074,373.14	\$45,723,814.76	\$71,233,578.92	\$60,991,990.59	\$48,205,942.75
TRANSMISSION SERVICE	\$4,133,151.61	\$4,931,261.42	\$5,733,154.58	\$4,124,626.16	\$3,273,916.44	\$3,108,200.27	\$4,576,922.20
UPLIFT	\$100,024.12	\$156,378.86	\$70,293.89	\$179,868.21	\$115,070.86	\$82,256.86	\$44,726.04
RESIDUALS	(\$1,327,220.47)	(\$1,167,921.45)	(\$1,638,873.45)	(\$822,102.01)	(\$1,868,528.26)	(\$1,613,489.94)	(\$1,084,087.37)
ANCILLARY SERVICES	\$2,143,775.57	\$2,175,916.39	\$2,209,220.75	\$2,156,923.85	\$2,171,653.88	\$1,832,057.18	\$2,098,092.18
TCC	\$4,516,446.81	\$4,472,310.57	\$6,353,304.82	\$4,147,753.77	\$2,685,651.67	\$1,952,531.07	\$5,610,225.50
	24	25	26	27	28	29	30
ENERGY	\$58,025,199.19	\$47,574,503.52	\$66,234,239.62	\$64,693,193.40	\$47,474,895.88	\$56,900,486.60	\$58,205,329.56
TRANSMISSION SERVICE	\$2,390,696.19	\$3,356,979.67	\$2,939,076.49	\$4,470,652.91	\$6,056,006.66	\$4,638,362.76	\$4,899,583.11
UPLIFT	\$127,687.01	\$32,202.30	\$192,054.90	\$81,209.31	\$191,883.23	\$353,374.69	\$476,183.41
RESIDUALS	(\$1,269,514.36)	(\$360,585.95)	(\$1,801,537.95)	(\$1,329,767.49)	(\$1,540,773.48)	(\$1,429,493.13)	(\$1,470,162.24)
ANCILLARY SERVICES	\$2,548,770.77	\$2,375,644.73	\$2,754,309.62	\$2,517,809.64	\$2,168,406.79	\$2,312,822.43	\$2,019,134.95
TCC	\$379,592.16	\$2,210,327.29	\$1,973,910.36	\$5,770,857.92	\$8,425,210.71	\$4,613,213.85	\$5,461,735.71
	31						
ENERGY	\$72,213,120.36						
TRANSMISSION SERVICE	\$4,815,409.86						
UPLIFT	\$359,237.38						
RESIDUALS	(\$1,363,705.64)						
ANCILLARY SERVICES	\$2,785,975.91						
TCC	\$8,690,198.82						



SETTLEMENTS REPORT
January 2022 Settlement Adjustment
February 7, 2022

Initial Settlement Adjustment – Market Costs Analysis

	MONDAY	TUESDAY	WEDNESDAY	THURSDAY	FRIDAY	SATURDAY	SUNDAY
						1	2
ENERGY						\$8,316,437.25	\$9,230,288.97
TRANSMISSION SERVICE						\$1,223,600.98	\$1,158,651.47
UPLIFT						\$12,737.34	\$22,773.74
RESIDUALS						(\$249,459.86)	(\$307,312.51)
ANCILLARY SERVICES						\$1,118,110.28	\$1,160,616.60
TCC						\$707,235.79	\$545,635.33
	3	4	5	6	7	8	9
ENERGY	\$18,586,733.41	\$20,423,865.74	\$19,136,902.68	\$20,834,724.17	\$34,529,814.63	\$39,729,315.99	\$32,832,317.16
TRANSMISSION SERVICE	\$2,430,528.28	\$3,511,788.26	\$4,411,018.38	\$4,008,867.19	\$6,033,105.49	\$8,920,359.66	\$8,065,697.69
UPLIFT	\$69,686.29	\$85,550.55	\$49,019.75	\$45,301.88	\$62,240.60	\$262,365.89	\$169,252.91
RESIDUALS	(\$950,107.82)	(\$862,405.72)	(\$577,970.57)	(\$526,495.49)	(\$571,106.47)	(\$671,497.42)	(\$235,795.07)
ANCILLARY SERVICES	\$1,384,294.66	\$1,472,330.53	\$1,499,170.12	\$1,593,175.03	\$1,780,546.90	\$1,850,314.43	\$1,991,737.66
TCC	\$2,034,949.39	\$3,637,272.13	\$4,997,539.79	\$5,215,412.55	\$8,035,896.15	\$14,816,523.45	\$13,036,457.67
	10	11	12	13	14	15	16
ENERGY	\$41,103,360.58	\$62,248,658.95	\$43,258,181.73	\$32,579,350.71	\$46,781,103.95	\$55,489,088.93	\$55,903,056.03
TRANSMISSION SERVICE	\$8,194,072.79	\$7,643,181.49	\$9,422,437.33	\$5,890,980.17	\$7,688,510.64	\$4,091,737.68	\$2,742,300.76
UPLIFT	\$69,222.95	\$781,728.51	\$112,090.62	\$62,533.16	\$171,495.13	\$217,552.90	\$892,462.36
RESIDUALS	(\$260,476.21)	\$942,151.23	(\$762,571.73)	(\$507,828.40)	(\$1,148,776.39)	(\$1,525,963.32)	\$736,449.64
ANCILLARY SERVICES	\$1,968,739.32	\$2,066,988.39	\$1,933,280.73	\$1,783,208.28	\$1,532,743.01	\$2,144,524.27	\$458,091.68
TCC	\$10,668,046.09	\$9,728,631.58	\$13,587,039.36	\$13,734,605.92	\$20,759,522.25	\$5,875,798.02	\$2,526,720.63
	17	18	19	20	21	22	23
ENERGY	\$42,609,033.41	\$44,459,167.46	\$45,085,147.40	\$45,748,937.64	\$71,223,253.09	\$60,991,990.59	\$48,205,942.75
TRANSMISSION SERVICE	\$4,133,551.37	\$4,931,585.14	\$5,733,509.83	\$4,125,006.69	\$3,273,871.71	\$3,108,200.27	\$4,576,922.20
UPLIFT	\$100,024.13	\$156,410.93	\$70,293.89	\$179,868.20	\$115,070.85	\$82,256.86	\$44,726.04
RESIDUALS	(\$1,327,671.29)	(\$1,167,044.87)	(\$1,639,577.52)	(\$822,499.85)	(\$1,834,246.52)	(\$1,613,489.94)	(\$1,084,087.37)
ANCILLARY SERVICES	\$2,144,179.98	\$2,176,266.58	\$2,209,580.42	\$2,157,308.79	\$2,171,747.20	\$1,832,057.18	\$2,098,092.18
TCC	\$4,516,446.81	\$4,472,310.57	\$6,353,304.82	\$4,147,753.77	\$2,685,651.67	\$1,952,531.07	\$5,610,225.50
	24	25	26	27	28	29	30
ENERGY	\$58,025,199.19	\$48,654,527.55	\$66,234,133.41	\$64,693,193.22	\$47,412,920.71	\$56,900,486.60	\$58,205,329.56
TRANSMISSION SERVICE	\$2,390,696.19	\$3,368,668.75	\$2,939,075.30	\$4,470,652.90	\$6,055,521.33	\$4,638,362.76	\$4,899,583.11
UPLIFT	\$127,687.01	\$32,202.29	\$192,054.90	\$81,209.32	\$191,883.24	\$353,374.69	\$476,183.41
RESIDUALS	(\$1,269,514.36)	(\$1,440,609.99)	(\$1,801,531.27)	(\$1,329,767.35)	(\$1,508,171.62)	(\$1,429,493.13)	(\$1,470,162.24)
ANCILLARY SERVICES	\$2,548,770.77	\$2,385,102.09	\$2,754,309.05	\$2,517,809.64	\$2,167,961.30	\$2,312,822.43	\$2,019,134.95
TCC	\$379,592.16	\$2,210,327.29	\$1,973,910.36	\$5,770,857.92	\$8,425,210.71	\$4,613,213.85	\$5,461,735.71
	31						
ENERGY	\$72,213,120.36						
TRANSMISSION SERVICE	\$4,815,409.86						
UPLIFT	\$359,237.38						
RESIDUALS	(\$1,363,705.64)						
ANCILLARY SERVICES	\$2,785,975.91						
TCC	\$8,690,198.82						

