

2022 Economic Forecast

Max Schuler

Demand Forecasting and Analysis

LFTF/ESPWG

February 25, 2022

Agenda

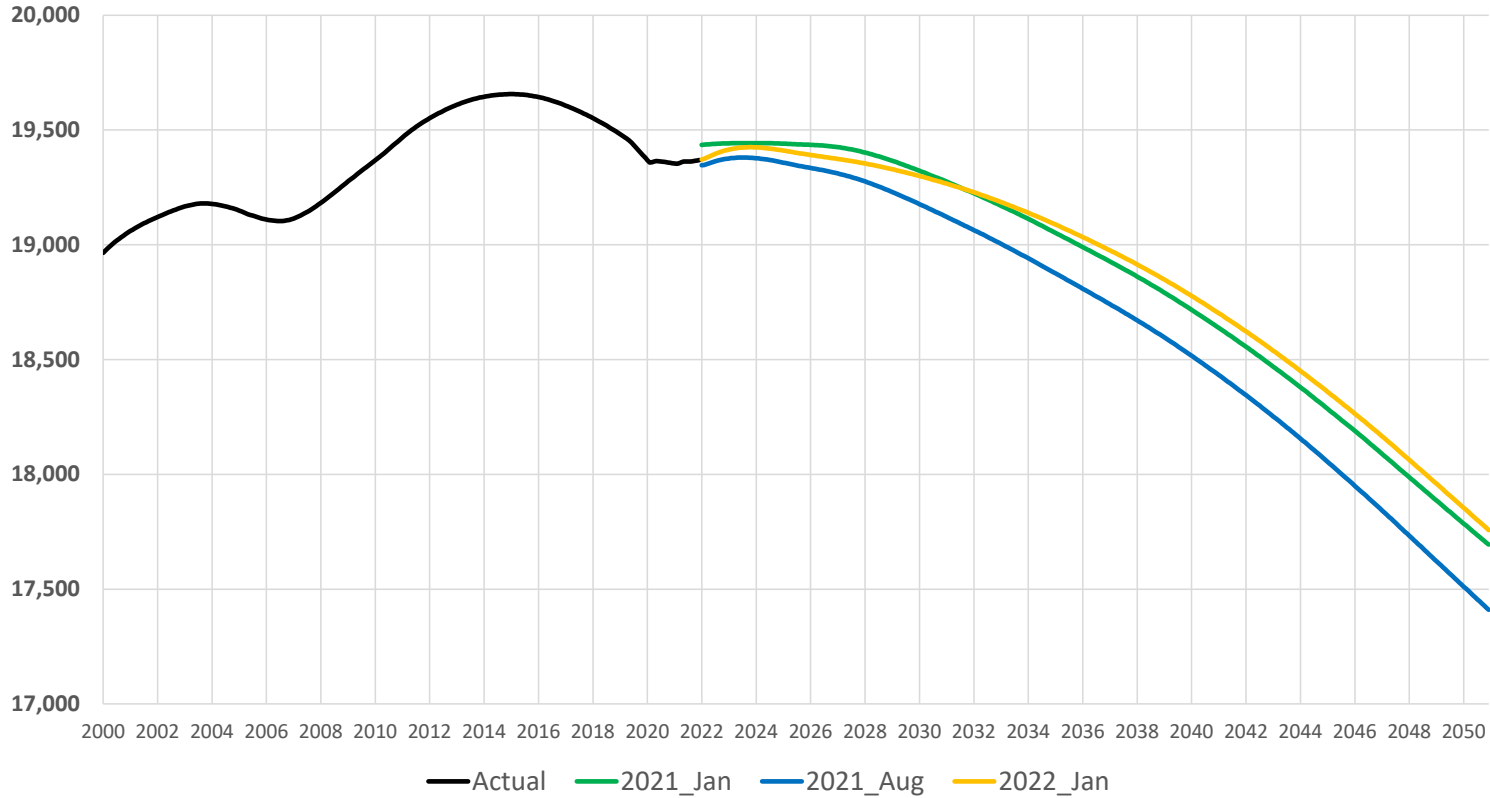
- **Moody's Analytics Economic Forecast Summary**
- **Statewide Economic Forecast**
- **Regional Economic Indicators**

January 2022 Moody's Economic Forecast Summary

- Similar to recent forecast iterations, Moody's projects statewide population to decline significantly during the 2030s and 2040s, falling below 18 million by 2050. Population decline is steepest in western and central New York (zones A to E).
- Household growth is generally flat through the late 2020s and early 2030s, and then declines slightly through the late 2030s and 2040s.
- Following two jumps due to stimulus impacts in 2020 and 2021, real income generally grows at its historical rate over the forecast horizon.
- Total employment continues to recover through 2024, before flattening out in the long run. Employment does not fully return to its pre-pandemic level statewide and across the majority of regions.
- Gross State Product (GSP) has fully recovered to the pre-pandemic expected level. In the long run, economic growth is strong.
- Regional projections generally follow statewide trends to varying extents, with Eastern NY (zones F&G) showing the strongest average growth across the various indicators. Western and central NY (zones A to E) generally lags behind the statewide projections.

Statewide Economic Forecast

Statewide Population (Thousands)

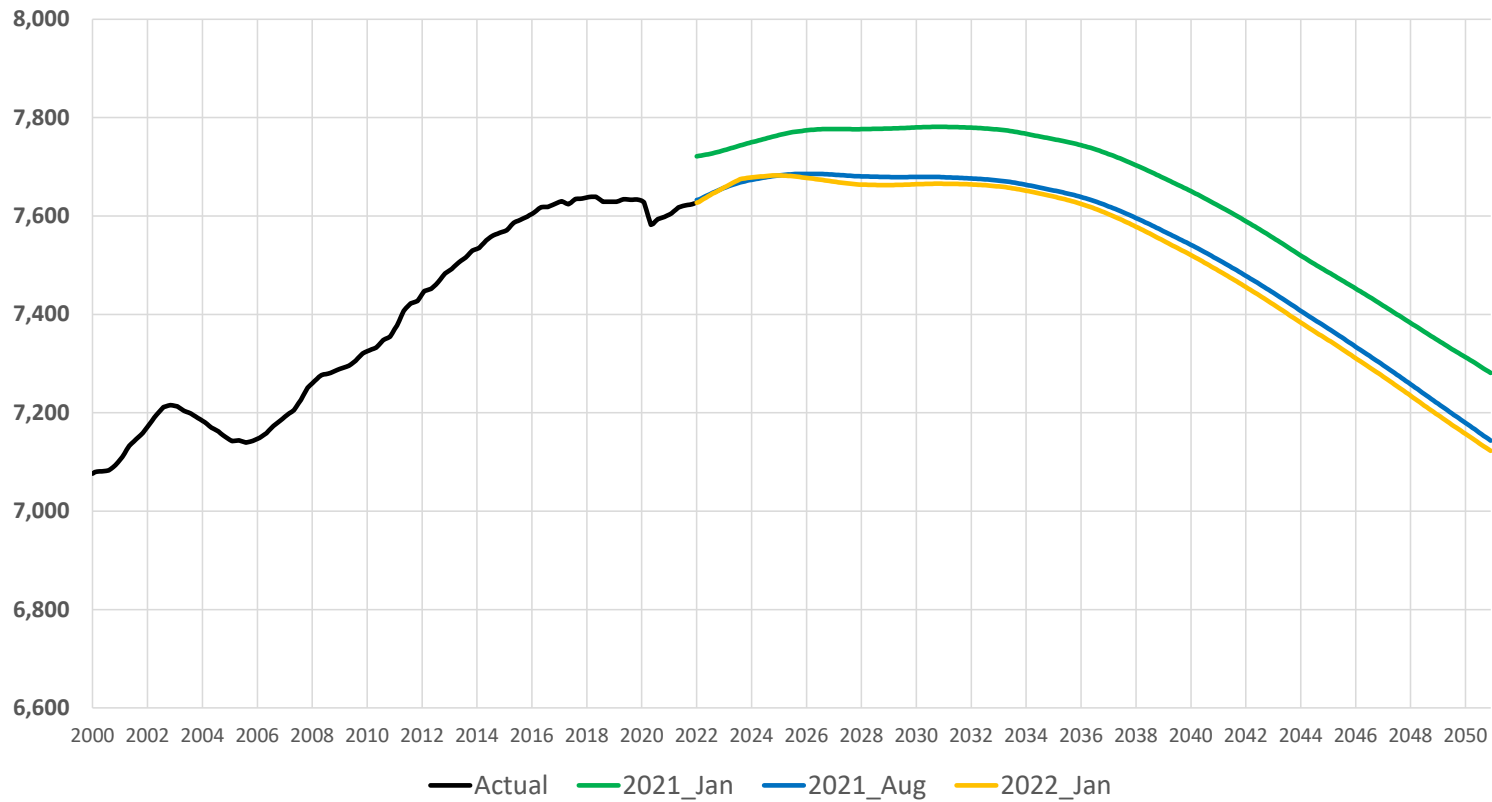


| Period | Average Annual Growth |
|---------|-----------------------|
| 2000-05 | 0.1% |
| 2005-10 | 0.4% |
| 2010-15 | 0.2% |
| 2015-20 | -0.3% |
| 2020-25 | 0.0% |
| 2025-30 | -0.1% |
| 2030-35 | -0.2% |
| 2035-40 | -0.3% |
| 2040-45 | -0.5% |
| 2045-50 | -0.7% |

Data from Moody's Analytics



Statewide Households (Thousands)

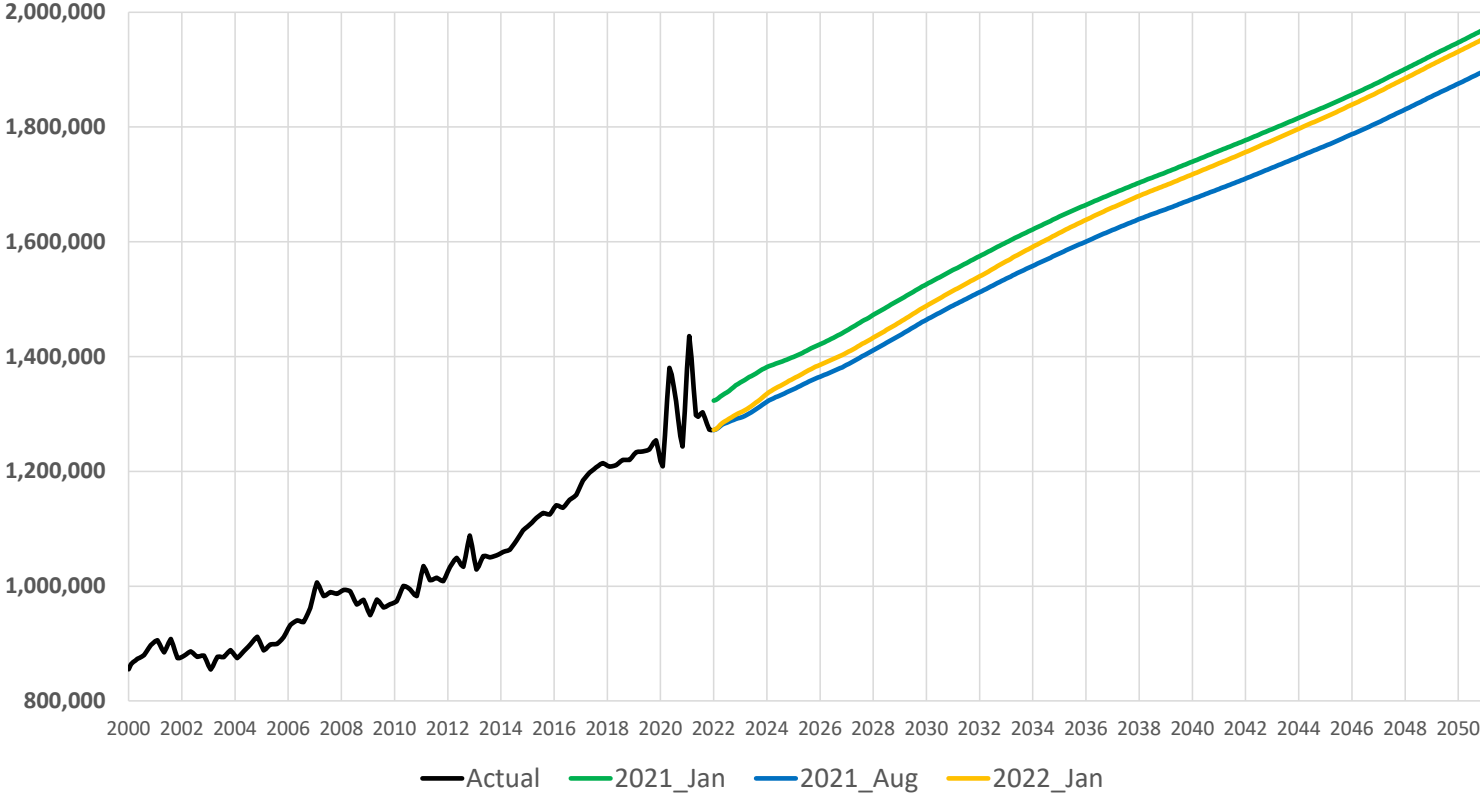


| Period | Average Annual Growth |
|---------|-----------------------|
| 2000-05 | 0.1% |
| 2005-10 | 0.6% |
| 2010-15 | 0.7% |
| 2015-20 | 0.0% |
| 2020-25 | 0.2% |
| 2025-30 | 0.0% |
| 2030-35 | -0.1% |
| 2035-40 | -0.4% |
| 2040-45 | -0.5% |
| 2045-50 | -0.7% |

Data from Moody's Analytics



Statewide Real Income (\$2012 M)

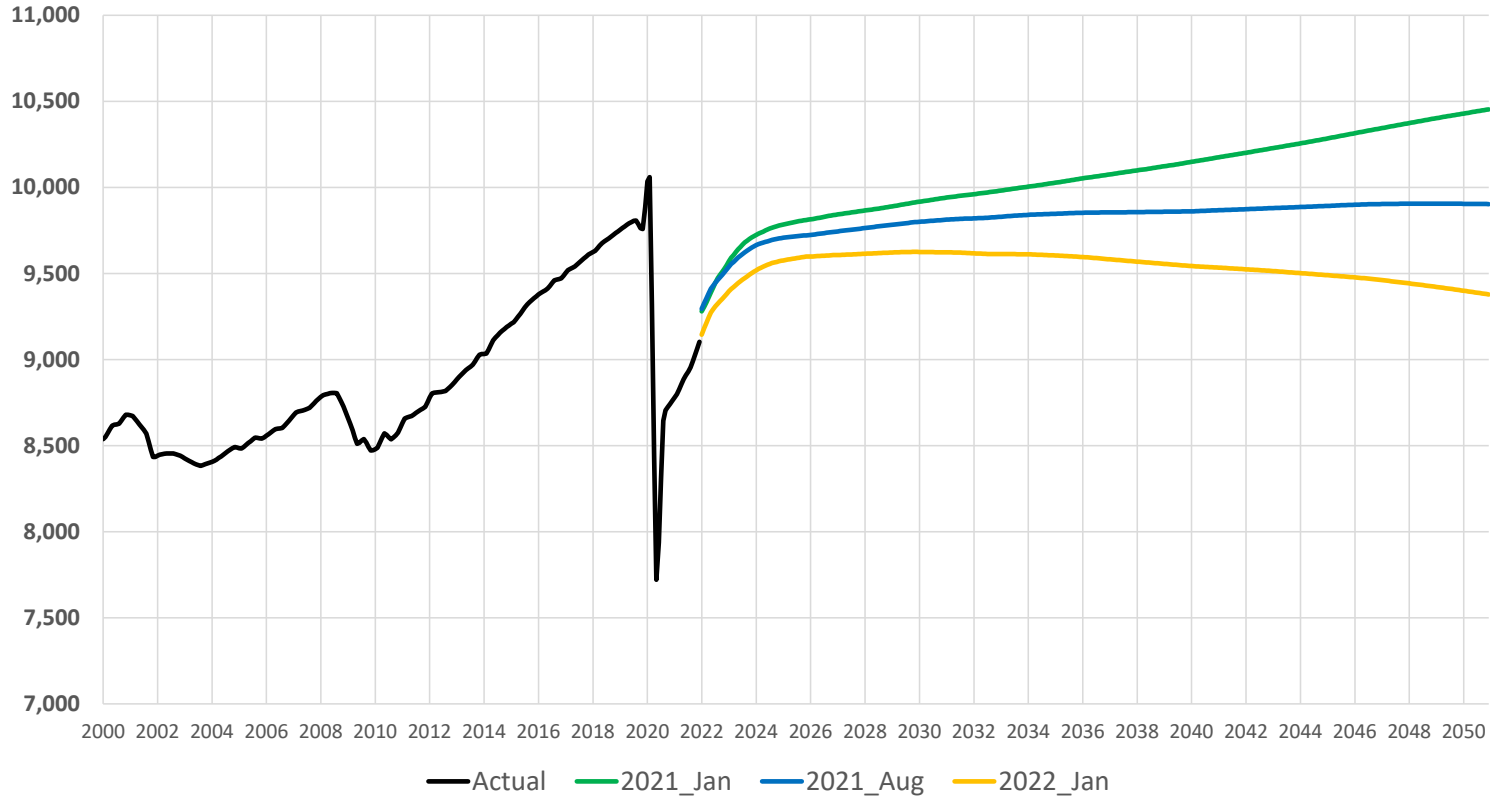


| Period | Average Annual Growth |
|---------|-----------------------|
| 2000-05 | 0.4% |
| 2005-10 | 1.8% |
| 2010-15 | 2.6% |
| 2015-20 | 3.1% |
| 2020-25 | 1.2% |
| 2025-30 | 1.9% |
| 2030-35 | 1.6% |
| 2035-40 | 1.2% |
| 2040-45 | 1.2% |
| 2045-50 | 1.6% |

Data from Moody's Analytics



Total Employment (Thousands)

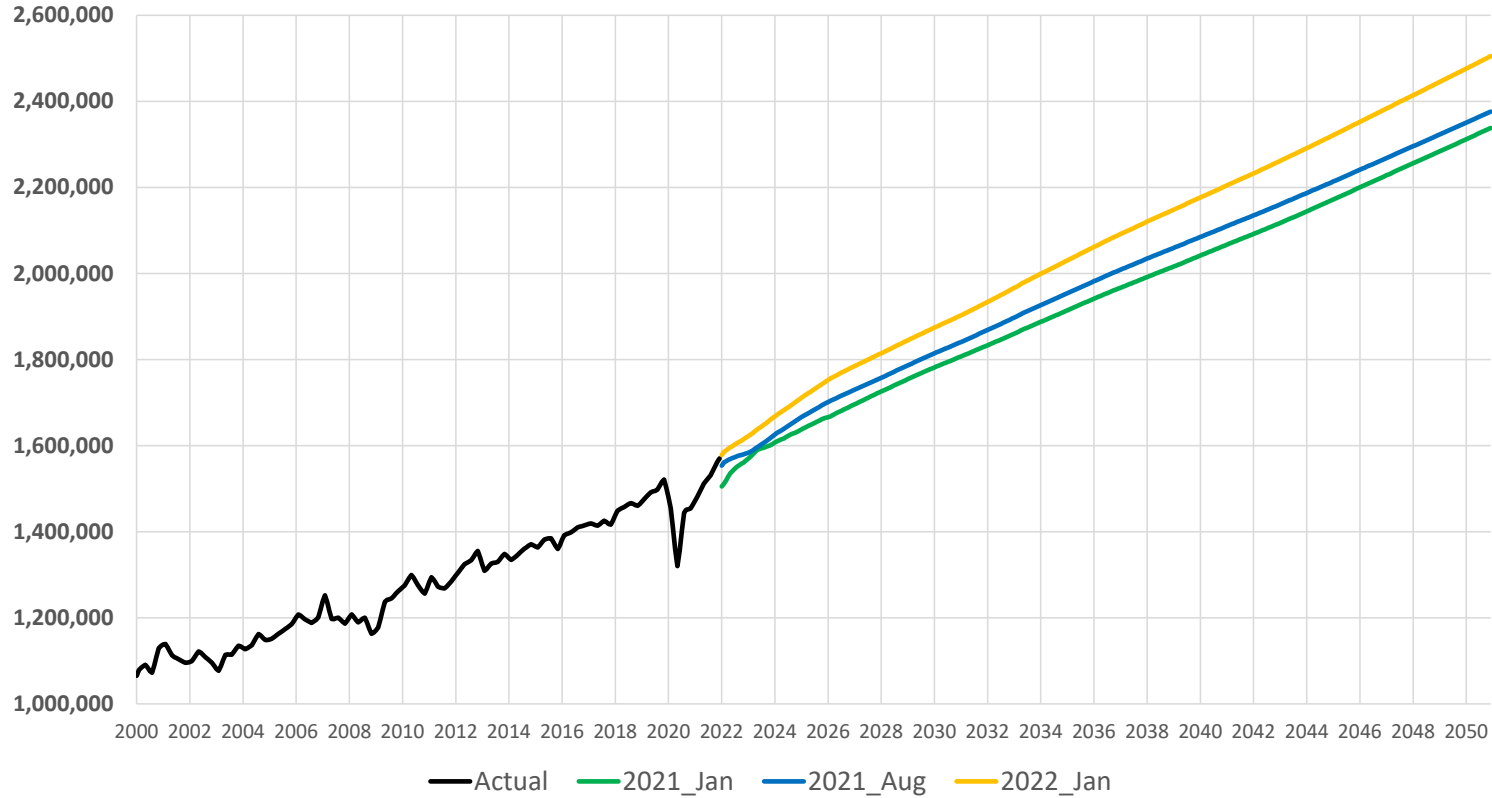


| Period | Average Annual Growth |
|---------|-----------------------|
| 2000-05 | -0.3% |
| 2005-10 | 0.1% |
| 2010-15 | 1.8% |
| 2015-20 | -1.3% |
| 2020-25 | 1.9% |
| 2025-30 | 0.1% |
| 2030-35 | -0.1% |
| 2035-40 | -0.1% |
| 2040-45 | -0.1% |
| 2045-50 | -0.3% |

Data from Moody's Analytics



Gross State Product (\$2012 M)



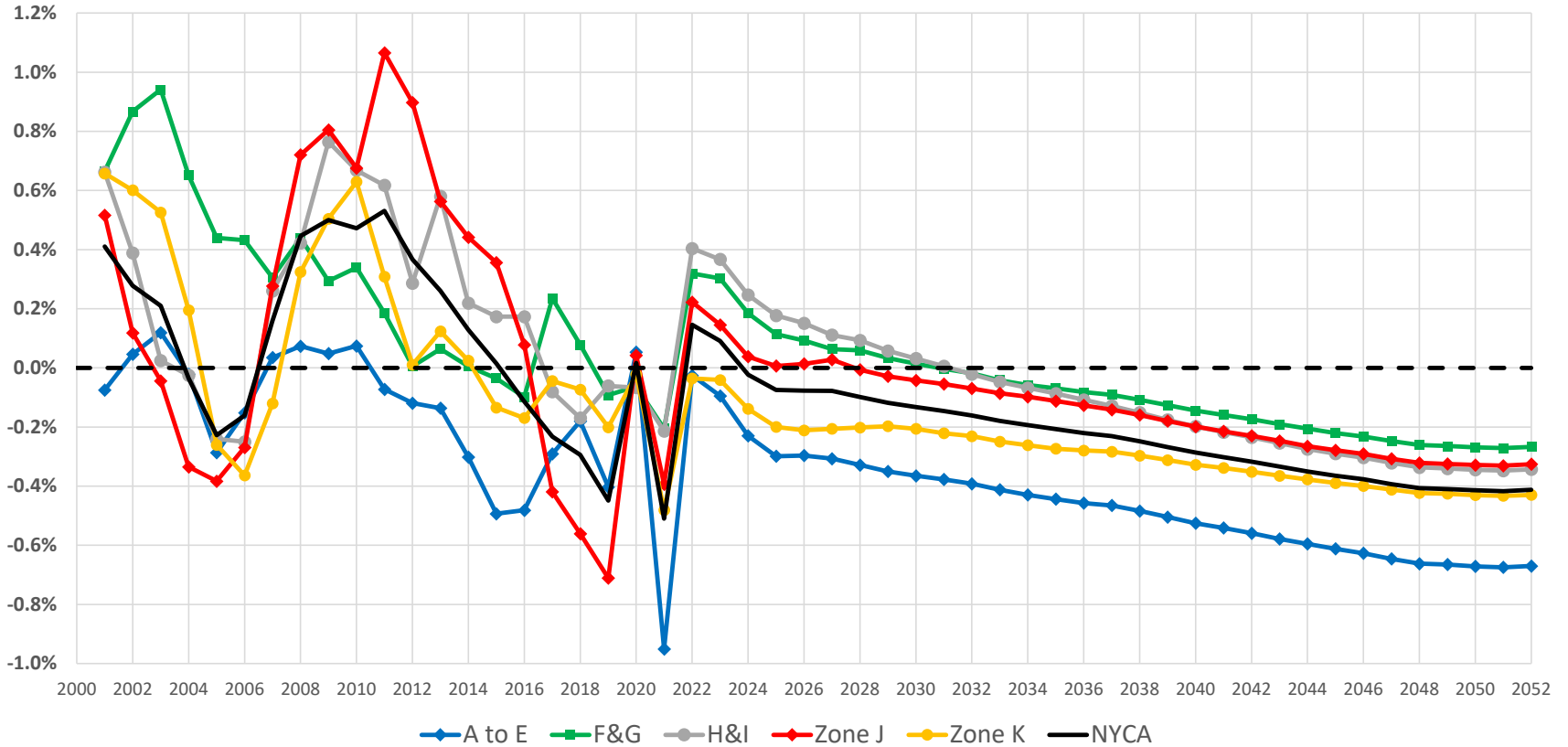
| Period | Average Annual Growth |
|---------|-----------------------|
| 2000-05 | 1.0% |
| 2005-10 | 1.3% |
| 2010-15 | 1.6% |
| 2015-20 | 1.4% |
| 2020-25 | 3.9% |
| 2025-30 | 1.7% |
| 2030-35 | 1.7% |
| 2035-40 | 1.4% |
| 2040-45 | 1.3% |
| 2045-50 | 1.6% |

Data from Moody's Analytics



Regional Economic Indicators

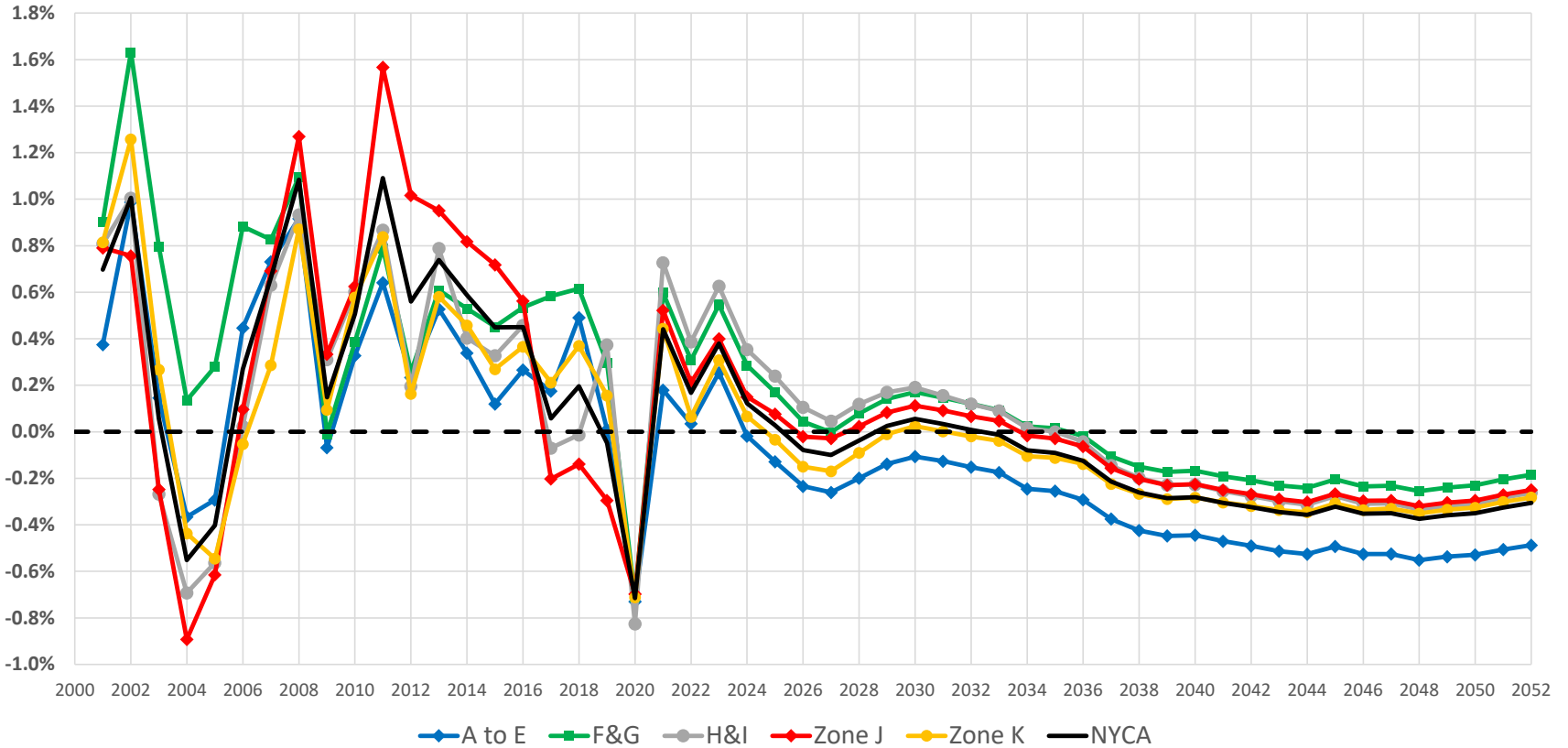
Baseline Population Forecast - Annual Percent Change



Data from Moody's Analytics



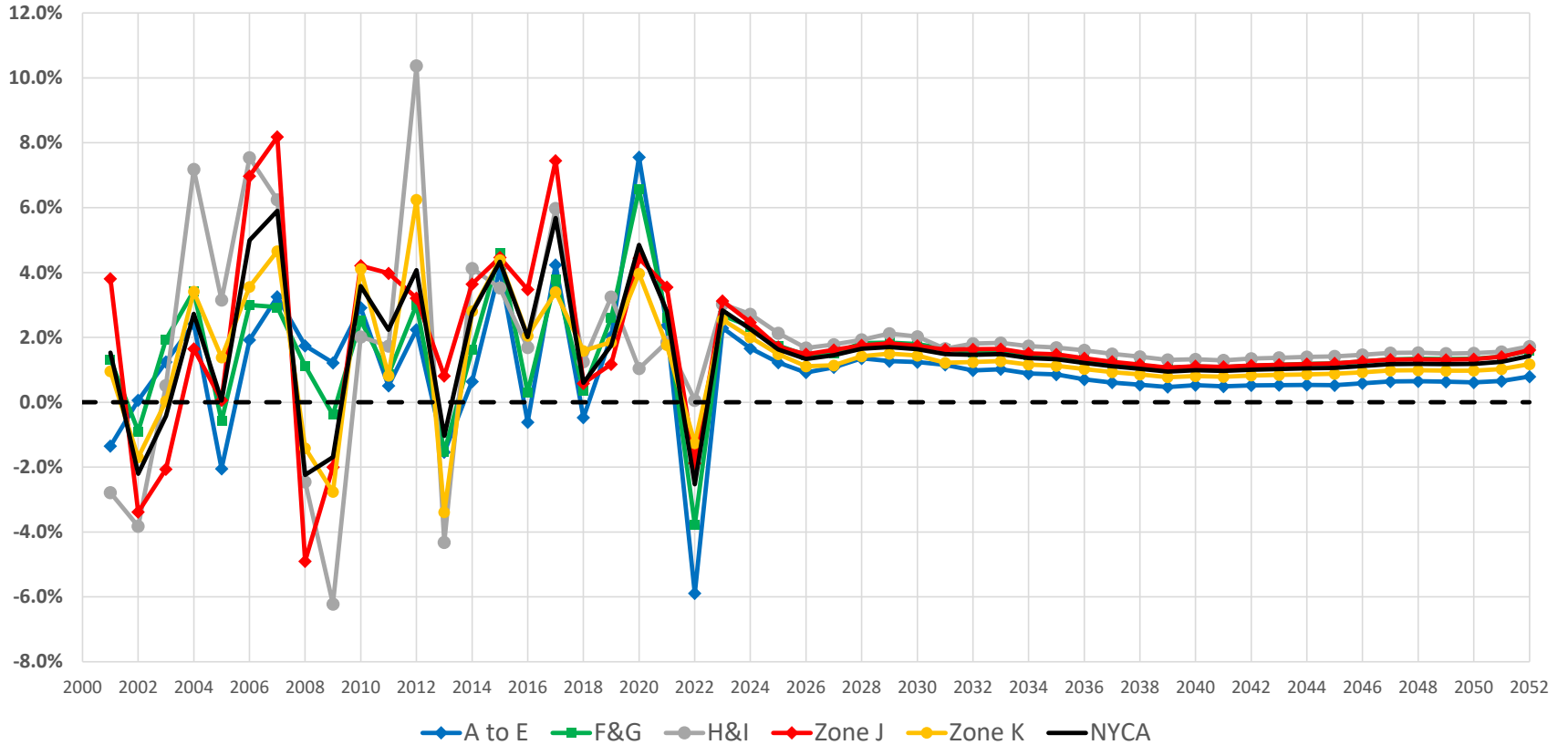
Baseline Households Forecast - Annual Percent Change



Data from Moody's Analytics



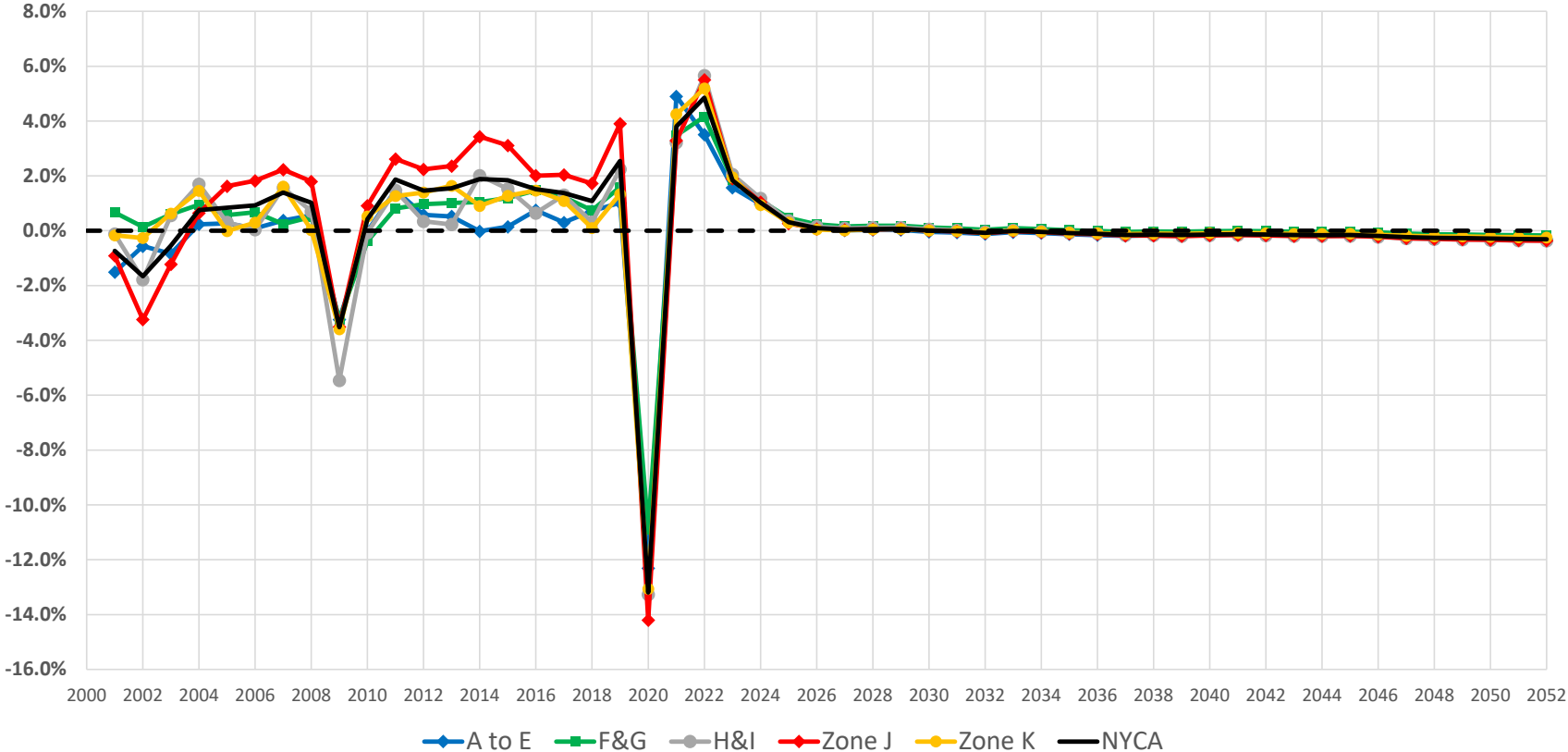
Baseline Real Income Forecast - Annual Percent Change



Data from Moody's Analytics



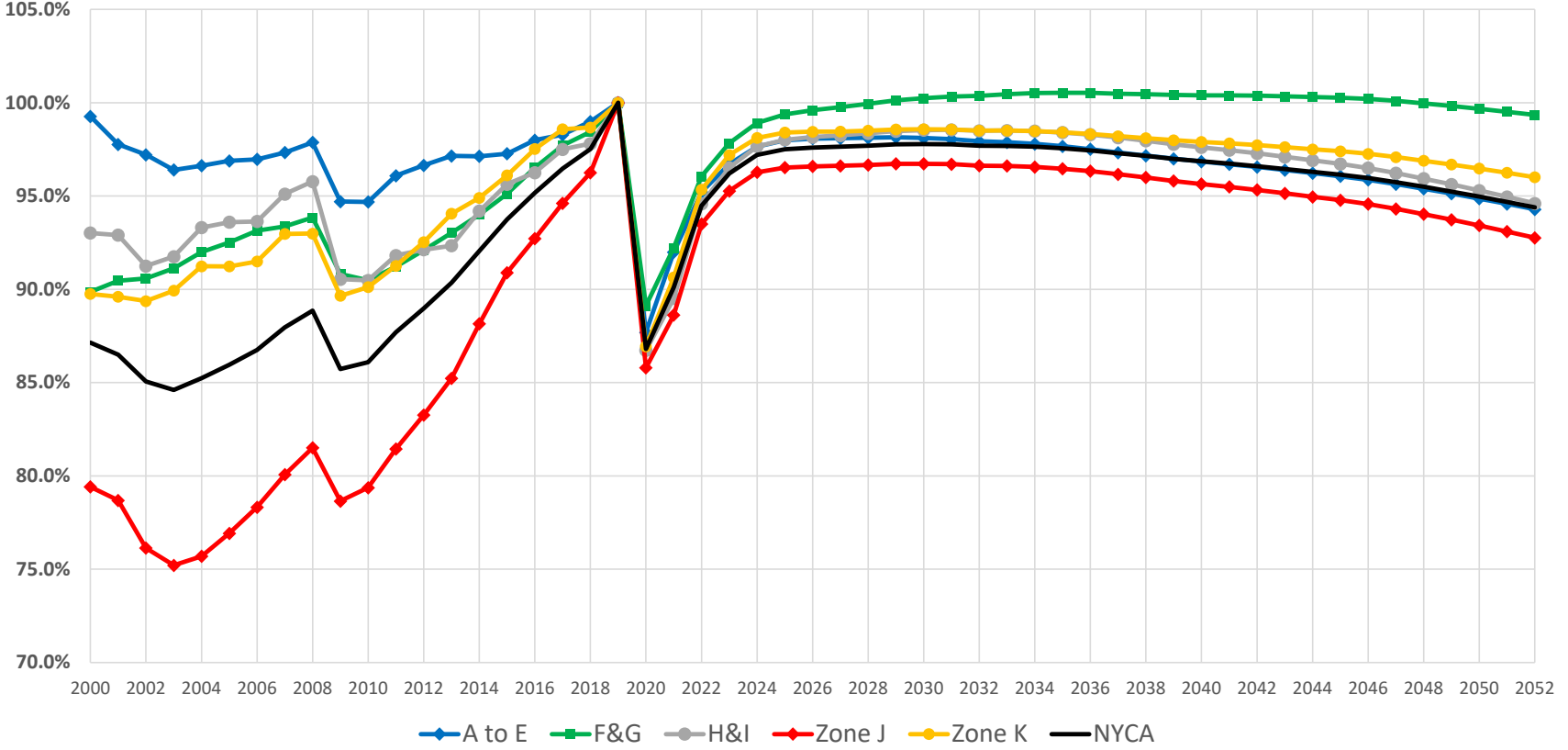
Baseline Employment Forecast - Annual Percent Change



Data from Moody's Analytics



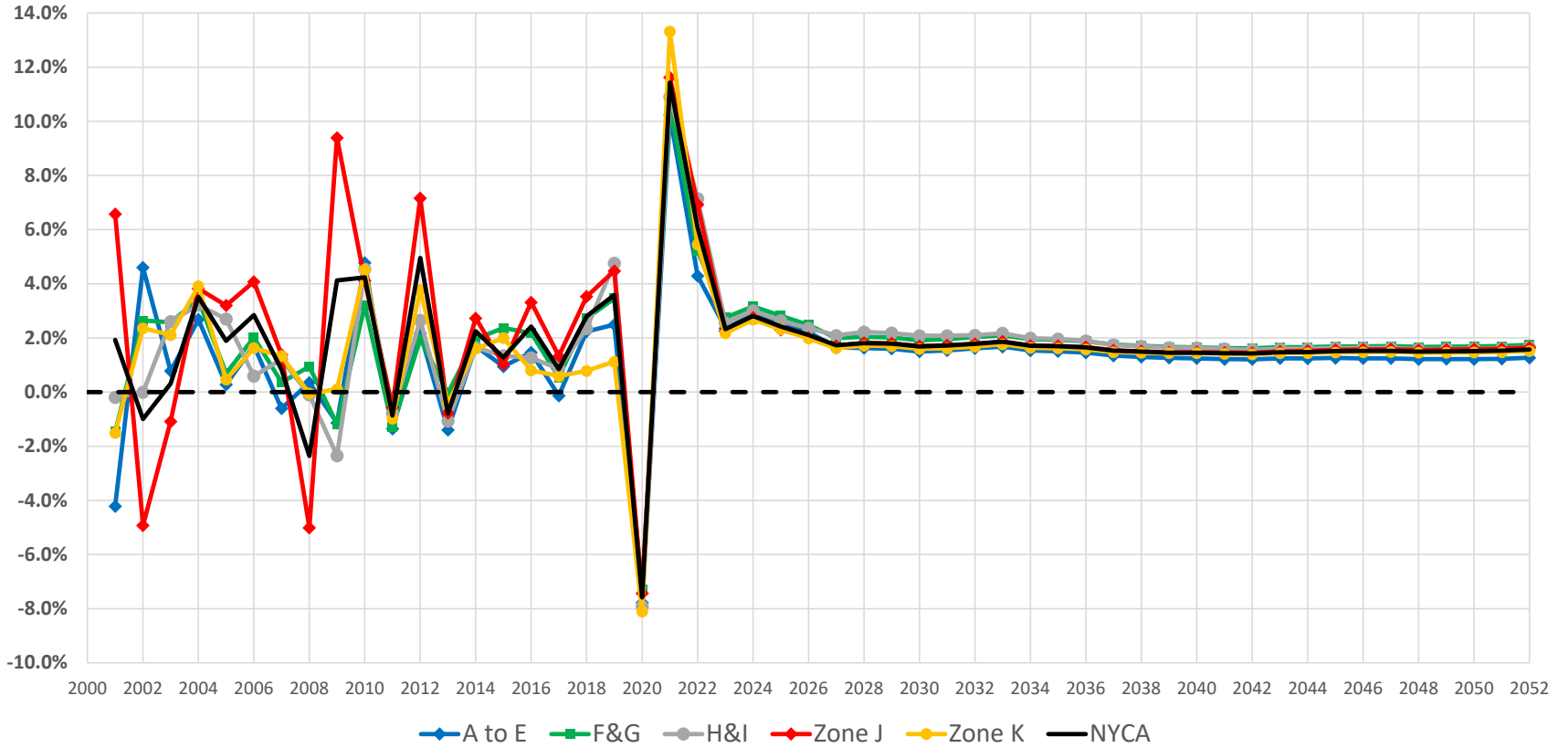
Baseline Employment Index (2019 = 1)



Data from Moody's Analytics



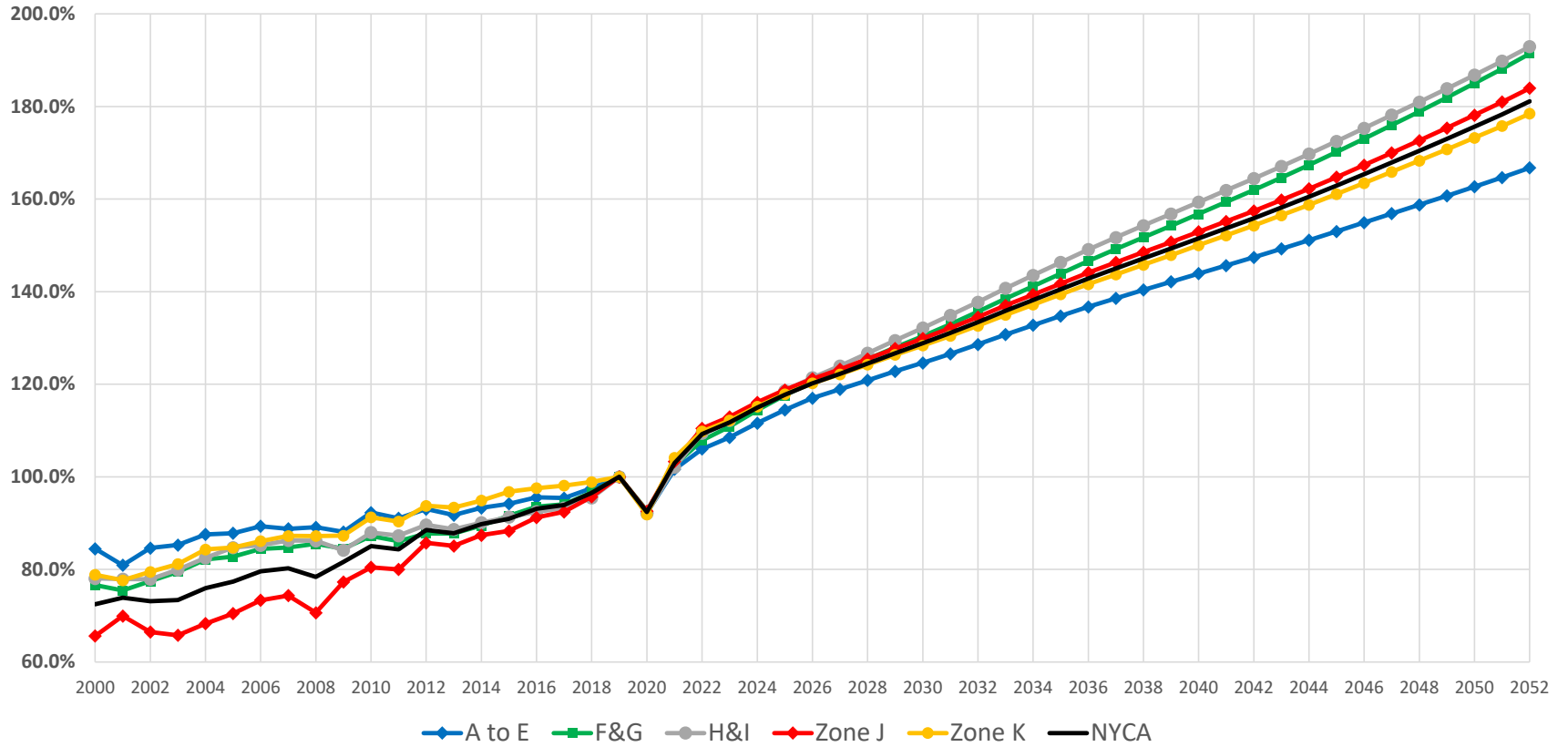
Baseline GDP Forecast - Annual Percent Change



Data from Moody's Analytics



Baseline GDP Index (2019 = 1)



Data from Moody's Analytics



Questions?

Our Mission & Vision



Mission

Ensure power system reliability and competitive markets for New York in a clean energy future



Vision

Working together with stakeholders to build the cleanest, most reliable electric system in the nation