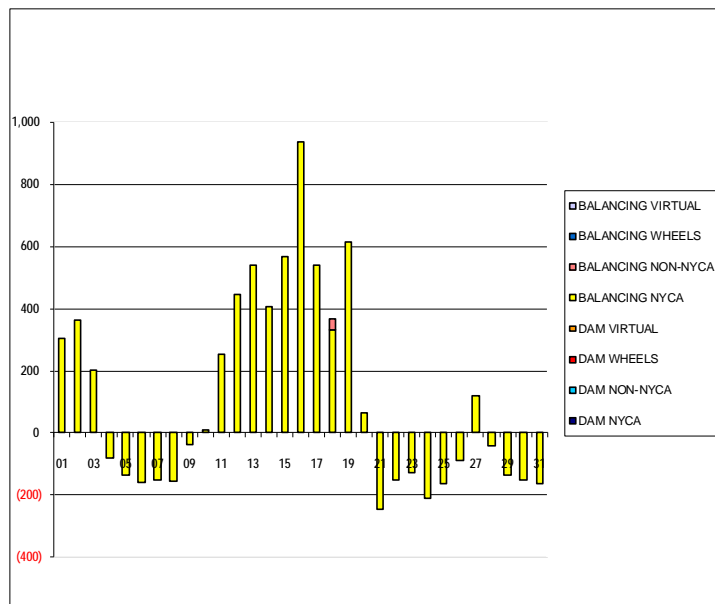


SETTLEMENTS REPORT
 October 2021 Settlement Adjustment
 March 7, 2022

Settlement Adjustment – Market Supply Delta Analysis

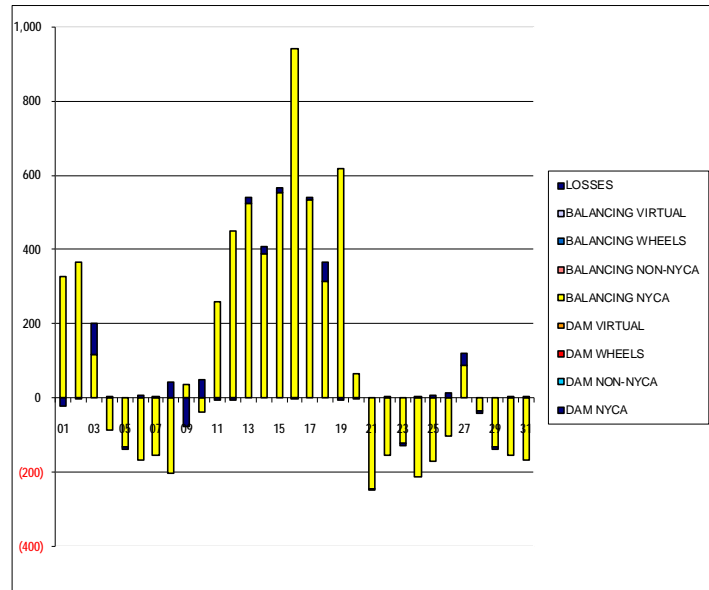
	MONDAY	TUESDAY	WEDNESDAY	THURSDAY	FRIDAY	SATURDAY	SUNDAY
					1	2	3
DAM NYCA					0	0	0
DAM NON-NYCA					0	0	0
DAM WHEELS					0	0	0
DAM VIRTUAL					0	0	0
BALANCING NYCA					305	365	203
BALANCING NON-NYCA					0	0	0
BALANCING WHEELS					0	0	0
BALANCING VIRTUAL					0	0	0
	4	5	6	7	8	9	10
DAM NYCA	0	0	0	0	0	0	0
DAM NON-NYCA	0	0	0	0	0	0	0
DAM WHEELS	0	0	0	0	0	0	0
DAM VIRTUAL	0	0	0	0	0	0	0
BALANCING NYCA	(82)	(137)	(160)	(152)	(156)	(39)	12
BALANCING NON-NYCA	0	0	0	0	0	0	0
BALANCING WHEELS	0	0	0	0	0	0	0
BALANCING VIRTUAL	0	0	0	0	0	0	0
	11	12	13	14	15	16	17
DAM NYCA	0	0	0	0	0	0	0
DAM NON-NYCA	0	0	0	0	0	0	0
DAM WHEELS	0	0	0	0	0	0	0
DAM VIRTUAL	0	0	0	0	0	0	0
BALANCING NYCA	254	444	540	408	566	938	541
BALANCING NON-NYCA	0	0	0	0	0	0	0
BALANCING WHEELS	0	0	0	0	0	0	0
BALANCING VIRTUAL	0	0	0	0	0	0	0
	18	19	20	21	22	23	24
DAM NYCA	0	0	0	0	0	0	0
DAM NON-NYCA	0	0	0	0	0	0	0
DAM WHEELS	0	0	0	0	0	0	0
DAM VIRTUAL	0	0	0	0	0	0	0
BALANCING NYCA	330	614	64	(246)	(150)	(128)	(210)
BALANCING NON-NYCA	36	0	0	0	0	0	0
BALANCING WHEELS	0	0	0	0	0	0	0
BALANCING VIRTUAL	0	0	0	0	0	0	0
	25	26	27	28	29	30	31
DAM NYCA	0	0	0	0	0	0	0
DAM NON-NYCA	0	0	0	0	0	0	0
DAM WHEELS	0	0	0	0	0	0	0
DAM VIRTUAL	0	0	0	0	0	0	0
BALANCING NYCA	(162)	(87)	120	(41)	(136)	(153)	(162)
BALANCING NON-NYCA	0	0	0	0	0	0	0
BALANCING WHEELS	0	0	0	0	0	0	0
BALANCING VIRTUAL	0	0	0	0	0	0	0



SETTLEMENTS REPORT
 October 2021 Settlement Adjustment
 March 7, 2022

Settlement Adjustment – Market Withdrawals Delta Analysis

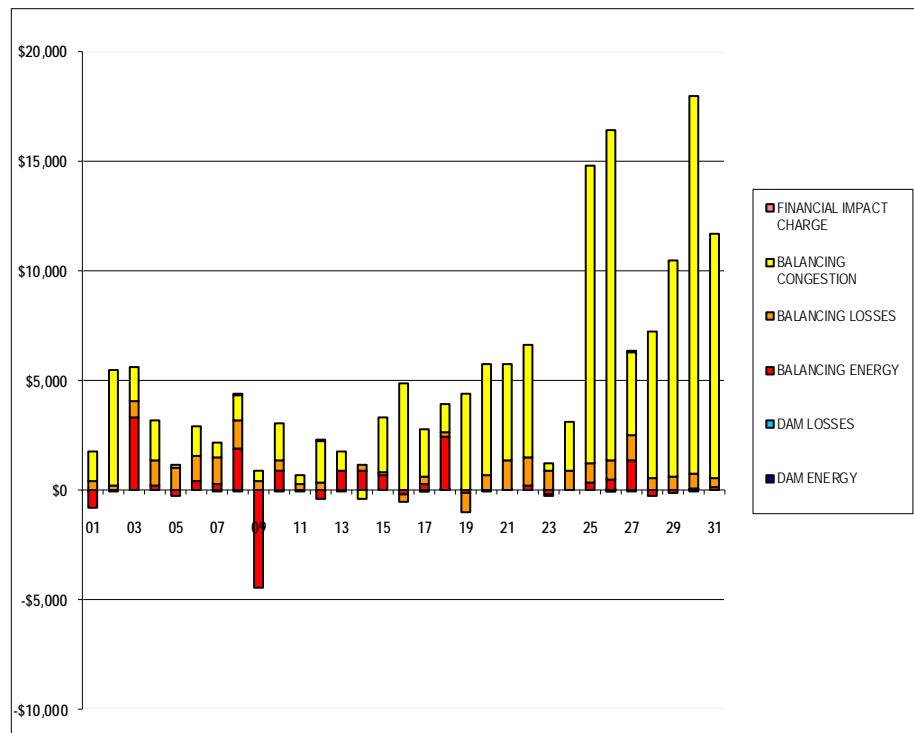
	MONDAY	TUESDAY	WEDNESDAY	THURSDAY	FRIDAY	SATURDAY	SUNDAY
					1	2	3
DAM NYCA					0	0	0
DAM NON-NYCA					0	0	0
DAM WHEELS					0	0	0
DAM VIRTUAL					0	0	0
BALANCING NYCA					327	367	118
BALANCING NON-NYCA					0	0	0
BALANCING WHEELS					0	0	0
BALANCING VIRTUAL					0	0	0
UFE/LOSSES					(21)	(2)	84
	4	5	6	7	8	9	10
DAM NYCA	0	0	0	0	0	0	0
DAM NON-NYCA	0	0	0	0	0	0	0
DAM WHEELS	0	0	0	0	0	0	0
DAM VIRTUAL	0	0	0	0	0	0	0
BALANCING NYCA	(87)	(131)	(167)	(155)	(201)	38	(38)
BALANCING NON-NYCA	0	0	0	0	0	0	0
BALANCING WHEELS	0	0	0	0	0	0	0
BALANCING VIRTUAL	0	0	0	0	0	0	0
UFE/LOSSES	5	(6)	7	3	44	(77)	49
	11	12	13	14	15	16	17
DAM NYCA	0	0	0	0	0	0	0
DAM NON-NYCA	0	0	0	0	0	0	0
DAM WHEELS	0	0	0	0	0	0	0
DAM VIRTUAL	0	0	0	0	0	0	0
BALANCING NYCA	259	449	524	390	554	941	534
BALANCING NON-NYCA	0	0	0	0	0	0	0
BALANCING WHEELS	0	0	0	0	0	0	0
BALANCING VIRTUAL	0	0	0	0	0	0	0
UFE/LOSSES	(5)	(5)	16	18	12	(3)	6
	18	19	20	21	22	23	24
DAM NYCA	0	0	0	0	0	0	0
DAM NON-NYCA	0	0	0	0	0	0	0
DAM WHEELS	0	0	0	0	0	0	0
DAM VIRTUAL	0	0	0	0	0	0	0
BALANCING NYCA	316	619	66	(245)	(154)	(121)	(212)
BALANCING NON-NYCA	0	0	0	0	0	0	0
BALANCING WHEELS	0	0	0	0	0	0	0
BALANCING VIRTUAL	0	0	0	0	0	0	0
UFE/LOSSES	51	(5)	(2)	(1)	4	(8)	1
	25	26	27	28	29	30	31
DAM NYCA	0	0	0	0	0	0	0
DAM NON-NYCA	0	0	0	0	0	0	0
DAM WHEELS	0	0	0	0	0	0	0
DAM VIRTUAL	0	0	0	0	0	0	0
BALANCING NYCA	(170)	(101)	88	(34)	(130)	(155)	(166)
BALANCING NON-NYCA	0	0	0	0	0	0	0
BALANCING WHEELS	0	0	0	0	0	0	0
BALANCING VIRTUAL	0	0	0	0	0	0	0
UFE/LOSSES	8	14	52	(7)	(6)	2	4



SETTLEMENTS REPORT
 October 2021 Settlement Adjustment
 March 7, 2022

Settlement Adjustment – Market Residuals Delta Analysis

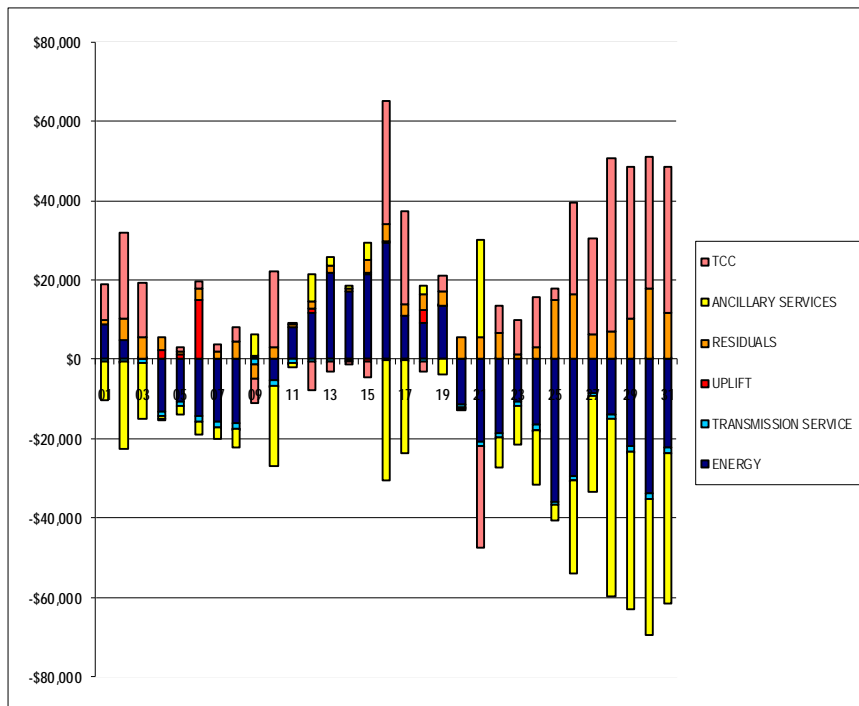
	MONDAY	TUESDAY	WEDNESDAY	THURSDAY	FRIDAY	SATURDAY	SUNDAY
					1	2	3
DAM ENERGY					\$0.00	\$0.00	\$0.00
DAM LOSSES					(\$0.01)	\$0.00	\$0.00
BALANCING ENERGY					(\$777.10)	(\$83.51)	\$3,291.22
BALANCING LOSSES					\$445.96	\$223.54	\$756.55
BALANCING CONGESTION					\$1,342.61	\$5,271.45	\$1,532.89
FINANCIAL IMPACT CHARGE					\$0.00	\$0.00	\$0.00
	4	5	6	7	8	9	10
DAM ENERGY	\$0.00	\$0.00	\$0.00	\$0.00	(\$0.01)	\$0.00	(\$0.01)
DAM LOSSES	\$0.00	(\$0.01)	\$0.00	\$0.00	\$0.00	\$0.00	\$0.00
BALANCING ENERGY	\$214.86	(\$275.44)	\$400.46	\$252.74	\$1,901.48	(\$4,444.51)	\$912.99
BALANCING LOSSES	\$1,133.47	\$999.95	\$1,160.88	\$1,245.83	\$1,250.22	\$393.69	\$456.86
BALANCING CONGESTION	\$1,821.40	\$127.63	\$1,315.80	\$655.27	\$1,205.56	\$469.45	\$1,688.48
FINANCIAL IMPACT CHARGE	\$0.00	\$0.00	\$0.00	(\$0.09)	\$0.01	\$0.00	\$0.00
	11	12	13	14	15	16	17
DAM ENERGY	\$0.00	\$0.00	\$0.00	\$0.00	\$0.00	(\$0.01)	(\$0.01)
DAM LOSSES	\$0.00	(\$0.01)	\$0.00	\$0.00	\$0.00	\$0.00	(\$0.01)
BALANCING ENERGY	(\$86.80)	(\$425.25)	\$907.00	\$896.46	\$717.31	(\$167.67)	\$298.31
BALANCING LOSSES	\$248.52	\$342.74	(\$75.47)	\$245.03	\$74.78	(\$348.79)	\$335.85
BALANCING CONGESTION	\$467.07	\$1,893.21	\$835.28	(\$411.83)	\$2,500.18	\$4,844.38	\$2,163.58
FINANCIAL IMPACT CHARGE	\$0.00	\$0.04	\$0.00	\$0.00	\$0.00	\$0.00	\$0.00
	18	19	20	21	22	23	24
DAM ENERGY	\$0.01	\$0.00	\$0.00	\$0.01	\$0.00	\$0.01	\$0.00
DAM LOSSES	\$0.01	\$0.01	\$0.00	\$0.00	\$0.00	(\$0.01)	\$0.00
BALANCING ENERGY	\$2,469.14	(\$147.97)	(\$55.52)	\$39.37	\$201.40	(\$162.44)	\$43.44
BALANCING LOSSES	\$181.78	(\$848.57)	\$701.77	\$1,288.39	\$1,267.42	\$920.95	\$848.43
BALANCING CONGESTION	\$1,300.66	\$4,372.41	\$5,026.07	\$4,411.35	\$5,181.56	\$307.43	\$2,230.98
FINANCIAL IMPACT CHARGE	\$0.00	\$0.00	\$0.00	\$0.00	\$0.00	(\$0.05)	\$0.00
	25	26	27	28	29	30	31
DAM ENERGY	\$0.00	(\$0.01)	\$0.00	\$0.00	\$0.00	(\$0.01)	\$0.00
DAM LOSSES	\$0.00	\$0.01	(\$0.01)	(\$0.01)	\$0.00	\$0.01	\$0.00
BALANCING ENERGY	\$329.64	\$463.49	\$1,368.86	(\$226.68)	(\$141.07)	\$107.74	\$115.65
BALANCING LOSSES	\$896.68	\$867.26	\$1,131.33	\$579.21	\$640.62	\$642.87	\$436.20
BALANCING CONGESTION	\$13,543.10	\$15,073.32	\$3,762.41	\$6,676.09	\$9,849.67	\$17,216.01	\$11,155.34
FINANCIAL IMPACT CHARGE	\$0.00	(\$0.02)	\$0.01	\$0.00	\$0.00	\$0.00	\$0.00



SETTLEMENTS REPORT
 October 2021 Settlement Adjustment
 March 7, 2022

Settlement Adjustment – Market Costs Delta Analysis

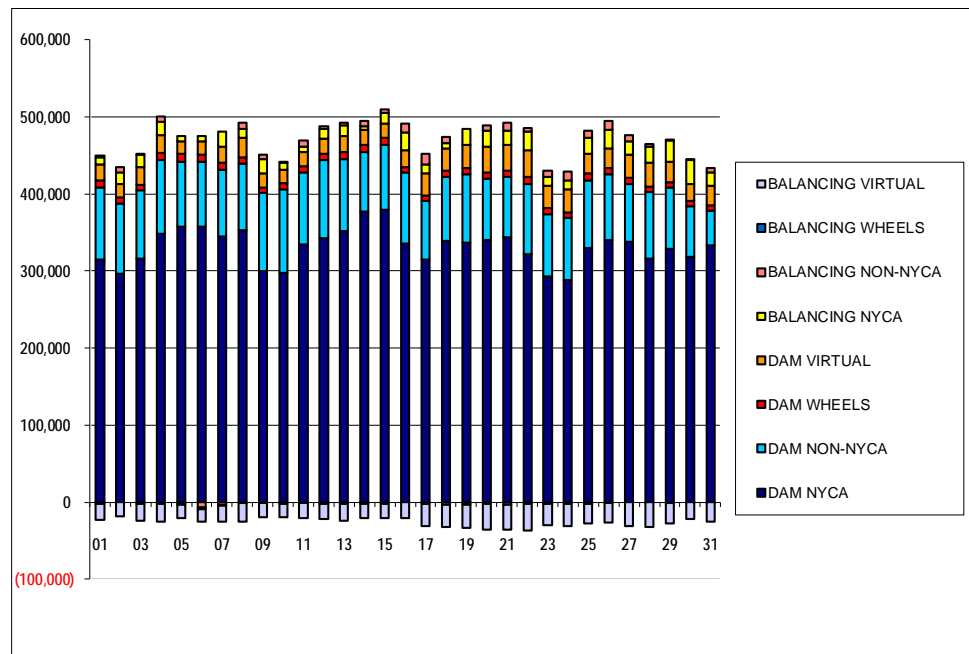
	MONDAY	TUESDAY	WEDNESDAY	THURSDAY	FRIDAY	SATURDAY	SUNDAY
					1	2	3
ENERGY					\$8,762.25	\$4,882.53	\$165.25
TRANSMISSION SERVICE					(\$526.72)	(\$614.47)	(\$857.54)
UPLIFT					(\$41.06)	(\$6.05)	\$8.32
RESIDUALS					\$1,011.46	\$5,411.48	\$5,580.66
ANCILLARY SERVICES					(\$9,666.00)	(\$21,832.31)	(\$14,168.76)
TCC					\$9,235.16	\$21,440.13	\$13,528.07
	4	5	6	7	8	9	10
ENERGY	(\$12,991.23)	(\$10,626.93)	(\$14,218.55)	(\$15,780.98)	(\$15,991.46)	\$712.17	(\$5,213.85)
TRANSMISSION SERVICE	(\$1,268.29)	(\$1,236.22)	(\$1,562.15)	(\$1,437.30)	(\$1,408.01)	(\$1,186.90)	(\$1,433.02)
UPLIFT	\$2,350.42	\$1,208.90	\$14,993.06	\$1.68	(\$0.37)	\$22.88	(\$76.56)
RESIDUALS	\$3,169.73	\$852.13	\$2,877.14	\$2,153.75	\$4,357.26	(\$3,581.37)	\$3,058.32
ANCILLARY SERVICES	(\$815.22)	(\$1,863.37)	(\$3,046.86)	(\$2,865.78)	(\$4,931.76)	\$5,485.17	(\$20,280.29)
TCC	(\$192.96)	\$895.31	\$1,767.28	\$1,728.26	\$3,836.11	(\$6,387.32)	\$19,226.07
	11	12	13	14	15	16	17
ENERGY	\$8,091.43	\$11,672.68	\$21,858.21	\$17,239.47	\$21,512.65	\$29,417.47	\$11,004.20
TRANSMISSION SERVICE	(\$1,028.70)	(\$381.33)	(\$362.88)	(\$310.71)	\$347.93	\$450.58	(\$118.61)
UPLIFT	(\$0.59)	\$1,021.13	(\$189.16)	(\$74.36)	(\$562.13)	(\$191.12)	(\$14.98)
RESIDUALS	\$628.79	\$1,810.73	\$1,666.81	\$729.66	\$3,292.27	\$4,327.91	\$2,797.72
ANCILLARY SERVICES	(\$1,061.77)	\$7,060.54	\$2,305.65	\$636.97	\$4,229.87	(\$30,086.82)	(\$23,433.54)
TCC	\$358.25	(\$7,260.34)	(\$2,453.41)	(\$797.11)	(\$4,047.81)	\$30,700.97	\$23,469.28
	18	19	20	21	22	23	24
ENERGY	\$9,221.25	\$13,489.41	(\$11,440.15)	(\$20,708.34)	(\$18,590.22)	(\$10,615.03)	(\$16,438.09)
TRANSMISSION SERVICE	(\$532.02)	\$56.58	(\$693.71)	(\$1,142.16)	(\$1,114.79)	(\$1,187.30)	(\$1,263.54)
UPLIFT	\$3,238.64	\$36.04	\$5.20	(\$50.64)	\$101.89	\$29.13	(\$38.32)
RESIDUALS	\$3,951.60	\$3,375.88	\$5,672.32	\$5,739.12	\$6,650.38	\$1,065.89	\$3,122.85
ANCILLARY SERVICES	\$2,180.02	(\$3,940.40)	(\$243.02)	\$24,474.27	(\$7,604.66)	(\$9,819.82)	(\$13,639.79)
TCC	(\$2,503.61)	\$4,120.88	(\$281.45)	(\$25,416.29)	\$6,706.12	\$8,882.81	\$12,620.12
	25	26	27	28	29	30	31
ENERGY	(\$35,746.40)	(\$29,396.70)	(\$8,460.82)	(\$13,704.14)	(\$21,673.13)	(\$33,725.70)	(\$22,086.07)
TRANSMISSION SERVICE	(\$1,007.62)	(\$881.78)	(\$643.11)	(\$1,289.32)	(\$1,556.27)	(\$1,551.59)	(\$1,444.01)
UPLIFT	\$20.98	(\$38.34)	(\$11.71)	\$18.59	(\$76.88)	\$15.07	\$20.10
RESIDUALS	\$14,769.42	\$16,404.05	\$6,262.60	\$7,028.61	\$10,349.22	\$17,966.62	\$11,707.19
ANCILLARY SERVICES	(\$3,961.34)	(\$23,575.04)	(\$24,384.68)	(\$44,715.14)	(\$39,484.85)	(\$34,091.29)	(\$37,877.27)
TCC	\$3,147.45	\$22,886.30	\$24,146.34	\$43,731.26	\$38,275.93	\$32,921.00	\$36,748.15



SETTLEMENTS REPORT
 October 2021 Settlement Adjustment
 March 7, 2022

Initial Settlement – Market Supply Analysis

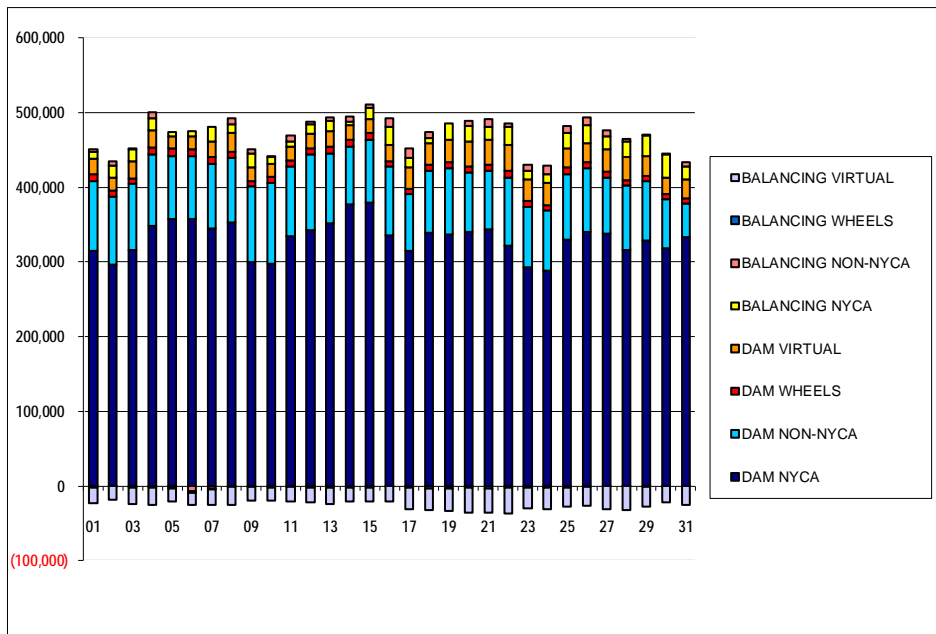
	MONDAY	TUESDAY	WEDNESDAY	THURSDAY	FRIDAY	SATURDAY	SUNDAY
					1	2	3
DAM NYCA					314,453	296,090	316,369
DAM NON-NYCA					93,740	91,944	88,039
DAM WHEELS					8,802	7,340	7,934
DAM VIRTUAL					20,944	17,598	21,984
BALANCING NYCA					9,619	15,271	16,158
BALANCING NON-NYCA					2,686	6,665	133
BALANCING WHEELS					(1,602)	(400)	(1,920)
BALANCING VIRTUAL					(20,944)	(17,598)	(21,984)
	4	5	6	7	8	9	10
DAM NYCA	348,156	357,337	357,643	344,937	353,414	300,142	297,880
DAM NON-NYCA	95,775	84,299	84,061	86,421	86,412	100,715	108,205
DAM WHEELS	9,506	10,287	9,721	8,931	8,229	7,909	8,372
DAM VIRTUAL	23,039	16,834	16,467	20,803	24,360	18,179	16,923
BALANCING NYCA	16,649	5,946	7,102	19,556	12,559	18,603	9,103
BALANCING NON-NYCA	7,421	(526)	(6,556)	(2,918)	7,552	4,992	870
BALANCING WHEELS	(2,306)	(3,087)	(2,527)	(1,731)	(1,029)	(709)	(2,009)
BALANCING VIRTUAL	(23,039)	(16,834)	(16,467)	(20,803)	(24,360)	(18,179)	(16,923)
	11	12	13	14	15	16	17
DAM NYCA	333,967	342,636	352,302	377,411	379,696	335,325	315,050
DAM NON-NYCA	93,936	101,133	92,789	77,555	83,583	92,827	75,807
DAM WHEELS	7,846	8,427	8,842	9,137	9,531	7,210	7,310
DAM VIRTUAL	19,013	20,013	21,649	18,951	18,465	21,056	28,657
BALANCING NYCA	6,787	12,012	13,081	4,389	14,039	23,527	12,007
BALANCING NON-NYCA	8,097	3,395	3,921	7,454	4,787	11,954	13,163
BALANCING WHEELS	(1,178)	(1,676)	(2,030)	(2,037)	(2,413)	(40)	(2,130)
BALANCING VIRTUAL	(19,013)	(20,013)	(21,649)	(18,951)	(18,465)	(21,056)	(28,657)
	18	19	20	21	22	23	24
DAM NYCA	338,719	337,056	340,757	343,467	322,372	292,838	288,479
DAM NON-NYCA	83,337	88,103	79,608	78,655	90,068	81,333	80,087
DAM WHEELS	7,625	8,290	8,093	8,517	9,866	8,041	7,681
DAM VIRTUAL	28,804	30,039	32,924	32,904	34,401	27,942	29,482
BALANCING NYCA	7,490	21,393	21,054	18,188	24,048	12,068	12,234
BALANCING NON-NYCA	7,746	(648)	6,620	10,231	4,693	7,748	11,388
BALANCING WHEELS	(3,053)	(2,957)	(2,393)	(3,116)	(2,721)	(1,576)	(1,943)
BALANCING VIRTUAL	(28,804)	(30,039)	(32,924)	(32,904)	(34,401)	(27,942)	(29,482)
	25	26	27	28	29	30	31
DAM NYCA	330,228	340,318	338,363	315,738	328,844	317,881	332,985
DAM NON-NYCA	87,822	85,787	74,784	86,487	78,979	65,703	45,401
DAM WHEELS	8,589	8,115	7,469	7,300	7,725	7,412	7,440
DAM VIRTUAL	26,014	25,138	30,465	31,477	26,767	21,800	24,560
BALANCING NYCA	20,171	23,975	17,525	20,231	27,288	31,023	17,669
BALANCING NON-NYCA	9,684	10,914	7,828	3,667	1,382	1,262	5,412
BALANCING WHEELS	(1,905)	(910)	(269)	(100)	(520)	(212)	(240)
BALANCING VIRTUAL	(26,014)	(25,138)	(30,465)	(31,477)	(26,767)	(21,800)	(24,560)



SETTLEMENTS REPORT
 October 2021 Settlement Adjustment
 March 7, 2022

4-Month Settlement Adjustment – Market Supply Analysis

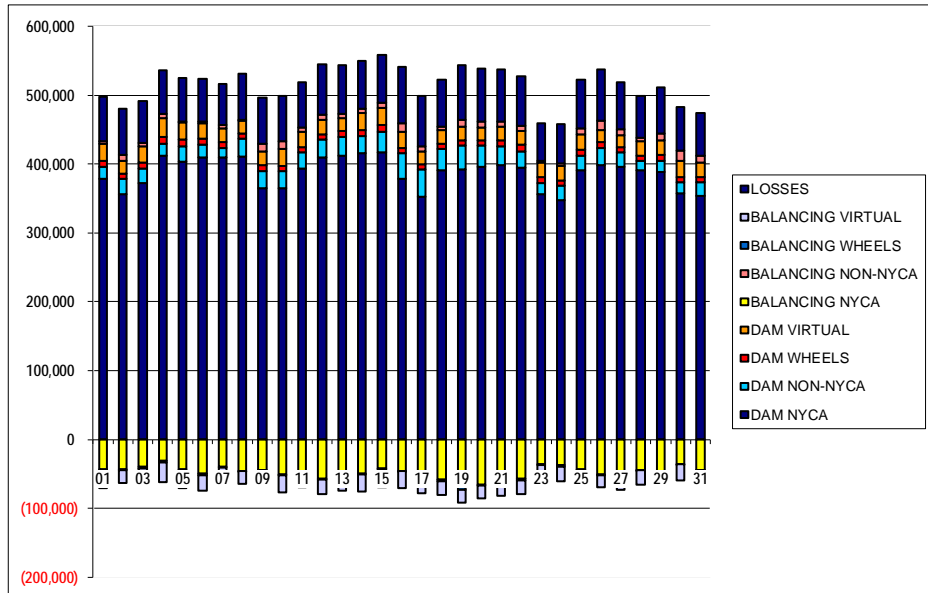
	MONDAY	TUESDAY	WEDNESDAY	THURSDAY	FRIDAY	SATURDAY	SUNDAY
					1	2	3
DAM NYCA					314,453	296,090	316,369
DAM NON-NYCA					93,740	91,944	88,039
DAM WHEELS					8,802	7,340	7,934
DAM VIRTUAL					20,944	17,598	21,984
BALANCING NYCA					9,925	15,636	16,360
BALANCING NON-NYCA					2,686	6,665	133
BALANCING WHEELS					(1,602)	(400)	(1,920)
BALANCING VIRTUAL					(20,944)	(17,598)	(21,984)
	4	5	6	7	8	9	10
DAM NYCA	348,156	357,337	357,643	344,937	353,414	300,142	297,880
DAM NON-NYCA	95,775	84,299	84,061	86,421	86,412	100,715	108,205
DAM WHEELS	9,506	10,287	9,721	8,931	8,229	7,909	8,372
DAM VIRTUAL	23,039	16,834	16,467	20,803	24,360	18,179	16,923
BALANCING NYCA	16,567	5,809	6,942	19,404	12,403	18,565	9,115
BALANCING NON-NYCA	7,421	(526)	(6,556)	(2,918)	7,552	4,992	870
BALANCING WHEELS	(2,306)	(3,087)	(2,527)	(1,731)	(1,029)	(709)	(2,009)
BALANCING VIRTUAL	(23,039)	(16,834)	(16,467)	(20,803)	(24,360)	(18,179)	(16,923)
	11	12	13	14	15	16	17
DAM NYCA	333,967	342,636	352,302	377,411	379,696	335,325	315,050
DAM NON-NYCA	93,936	101,133	92,789	77,555	83,583	92,827	75,807
DAM WHEELS	7,846	8,427	8,842	9,137	9,531	7,210	7,310
DAM VIRTUAL	19,013	20,013	21,649	18,951	18,465	21,056	28,657
BALANCING NYCA	7,041	12,456	13,621	4,796	14,605	24,465	12,547
BALANCING NON-NYCA	8,097	3,395	3,921	7,454	4,787	11,954	13,163
BALANCING WHEELS	(1,178)	(1,676)	(2,030)	(2,037)	(2,413)	(40)	(2,130)
BALANCING VIRTUAL	(19,013)	(20,013)	(21,649)	(18,951)	(18,465)	(21,056)	(28,657)
	18	19	20	21	22	23	24
DAM NYCA	338,719	337,056	340,757	343,467	322,372	292,838	288,479
DAM NON-NYCA	83,337	88,103	79,608	78,655	90,068	81,333	80,087
DAM WHEELS	7,625	8,290	8,093	8,517	9,866	8,041	7,681
DAM VIRTUAL	28,804	30,039	32,924	32,904	34,401	27,942	29,482
BALANCING NYCA	7,820	22,007	21,119	17,942	23,898	11,940	12,024
BALANCING NON-NYCA	7,782	(648)	6,620	10,231	4,693	7,748	11,388
BALANCING WHEELS	(3,053)	(2,957)	(2,393)	(3,116)	(2,721)	(1,576)	(1,943)
BALANCING VIRTUAL	(28,804)	(30,039)	(32,924)	(32,904)	(34,401)	(27,942)	(29,482)
	25	26	27	28	29	30	31
DAM NYCA	330,228	340,318	338,363	315,738	328,844	317,881	332,985
DAM NON-NYCA	87,822	85,787	74,784	86,487	78,979	65,703	45,401
DAM WHEELS	8,589	8,115	7,469	7,300	7,725	7,412	7,440
DAM VIRTUAL	26,014	25,138	30,465	31,477	26,767	21,800	24,560
BALANCING NYCA	20,008	23,888	17,645	20,190	27,152	30,871	17,507
BALANCING NON-NYCA	9,684	10,914	7,828	3,667	1,382	1,262	5,412
BALANCING WHEELS	(1,905)	(910)	(269)	(100)	(520)	(212)	(240)
BALANCING VIRTUAL	(26,014)	(25,138)	(30,465)	(31,477)	(26,767)	(21,800)	(24,560)



SETTLEMENTS REPORT
 October 2021 Settlement Adjustment
 March 7, 2022

Initial Settlement – Market Withdrawals Analysis

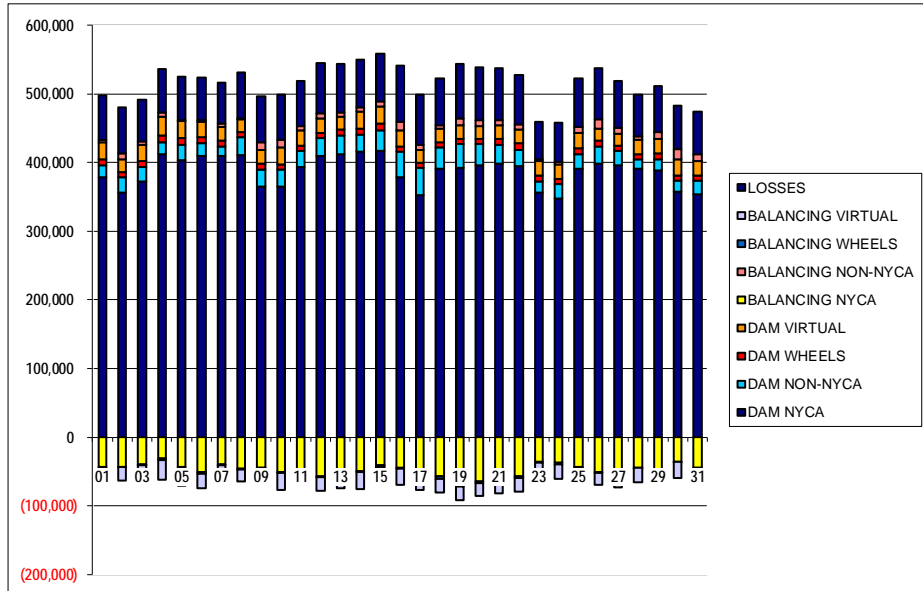
	MONDAY	TUESDAY	WEDNESDAY	THURSDAY	FRIDAY	SATURDAY	SUNDAY
					1	2	3
DAM NYCA					378,471	356,593	372,733
DAM NON-NYCA					17,248	22,132	21,403
DAM WHEELS					8,902	7,340	7,934
DAM VIRTUAL					24,983	19,074	23,630
BALANCING NYCA					(43,494)	(43,778)	(39,512)
BALANCING NON-NYCA					3,922	8,054	4,526
BALANCING WHEELS					(1,602)	(400)	(1,920)
BALANCING VIRTUAL					(24,983)	(19,074)	(23,630)
UFE/LOSSES					64,352	66,969	61,549
	4	5	6	7	8	9	10
DAM NYCA	412,013	402,852	409,120	409,366	410,908	365,560	365,516
DAM NON-NYCA	17,512	22,514	18,604	14,180	25,755	24,458	23,700
DAM WHEELS	9,506	10,287	9,721	8,931	8,229	7,909	8,372
DAM VIRTUAL	28,113	24,325	21,605	19,773	18,107	20,387	24,851
BALANCING NYCA	(31,214)	(43,549)	(50,026)	(39,300)	(45,181)	(44,385)	(50,236)
BALANCING NON-NYCA	5,871	1,807	2,465	4,167	1,336	11,715	10,758
BALANCING WHEELS	(2,306)	(3,087)	(2,527)	(1,731)	(1,029)	(709)	(2,009)
BALANCING VIRTUAL	(28,113)	(24,325)	(21,605)	(19,773)	(18,107)	(20,387)	(24,851)
UFE/LOSSES	63,818	63,433	62,088	59,583	67,119	67,105	66,321
	11	12	13	14	15	16	17
DAM NYCA	394,143	410,097	412,088	415,304	416,899	378,985	353,105
DAM NON-NYCA	22,888	25,097	27,027	25,469	30,019	37,317	39,402
DAM WHEELS	7,846	8,427	8,842	9,137	9,531	7,210	7,310
DAM VIRTUAL	21,796	20,226	18,980	24,640	25,612	23,993	18,524
BALANCING NYCA	(46,649)	(56,848)	(53,287)	(49,284)	(41,609)	(46,055)	(56,832)
BALANCING NON-NYCA	6,806	7,412	5,889	6,334	7,363	11,673	7,453
BALANCING WHEELS	(1,178)	(1,676)	(2,030)	(2,037)	(2,413)	(40)	(2,130)
BALANCING VIRTUAL	(21,796)	(20,226)	(18,980)	(24,640)	(25,612)	(23,993)	(18,524)
UFE/LOSSES	65,599	73,419	70,376	68,984	69,433	81,714	72,899
	18	19	20	21	22	23	24
DAM NYCA	391,037	392,299	395,689	398,616	394,406	356,718	347,795
DAM NON-NYCA	31,149	34,512	30,819	27,735	24,090	16,145	21,028
DAM WHEELS	7,625	8,290	8,093	8,517	9,866	8,041	7,681
DAM VIRTUAL	19,813	19,409	18,141	19,526	19,769	20,813	21,037
BALANCING NYCA	(57,733)	(69,577)	(65,048)	(58,903)	(56,936)	(35,999)	(37,424)
BALANCING NON-NYCA	4,462	9,544	8,447	6,918	7,732	3,218	3,549
BALANCING WHEELS	(3,053)	(2,957)	(2,393)	(3,116)	(2,721)	(1,576)	(1,943)
BALANCING VIRTUAL	(19,813)	(19,409)	(18,141)	(19,526)	(19,769)	(20,813)	(21,037)
UFE/LOSSES	68,377	79,127	78,132	76,175	71,889	53,906	57,239
	25	26	27	28	29	30	31
DAM NYCA	390,874	398,263	395,744	390,748	388,039	357,586	353,576
DAM NON-NYCA	21,531	25,195	20,760	14,051	17,257	15,915	20,676
DAM WHEELS	8,589	8,115	7,469	7,300	7,725	7,412	7,440
DAM VIRTUAL	21,990	17,876	18,194	21,066	21,111	23,614	20,839
BALANCING NYCA	(43,524)	(51,037)	(54,993)	(44,075)	(46,467)	(35,510)	(44,470)
BALANCING NON-NYCA	8,619	13,131	8,167	5,063	10,136	14,493	10,058
BALANCING WHEELS	(1,905)	(910)	(269)	(100)	(520)	(212)	(240)
BALANCING VIRTUAL	(21,990)	(17,876)	(18,194)	(21,066)	(21,111)	(23,614)	(20,839)
UFE/LOSSES	70,404	75,443	68,822	60,335	67,528	63,385	61,628



SETTLEMENTS REPORT
 October 2021 Settlement Adjustment
 March 7, 2022

4-Month Settlement Adjustment – Market Withdrawals Analysis

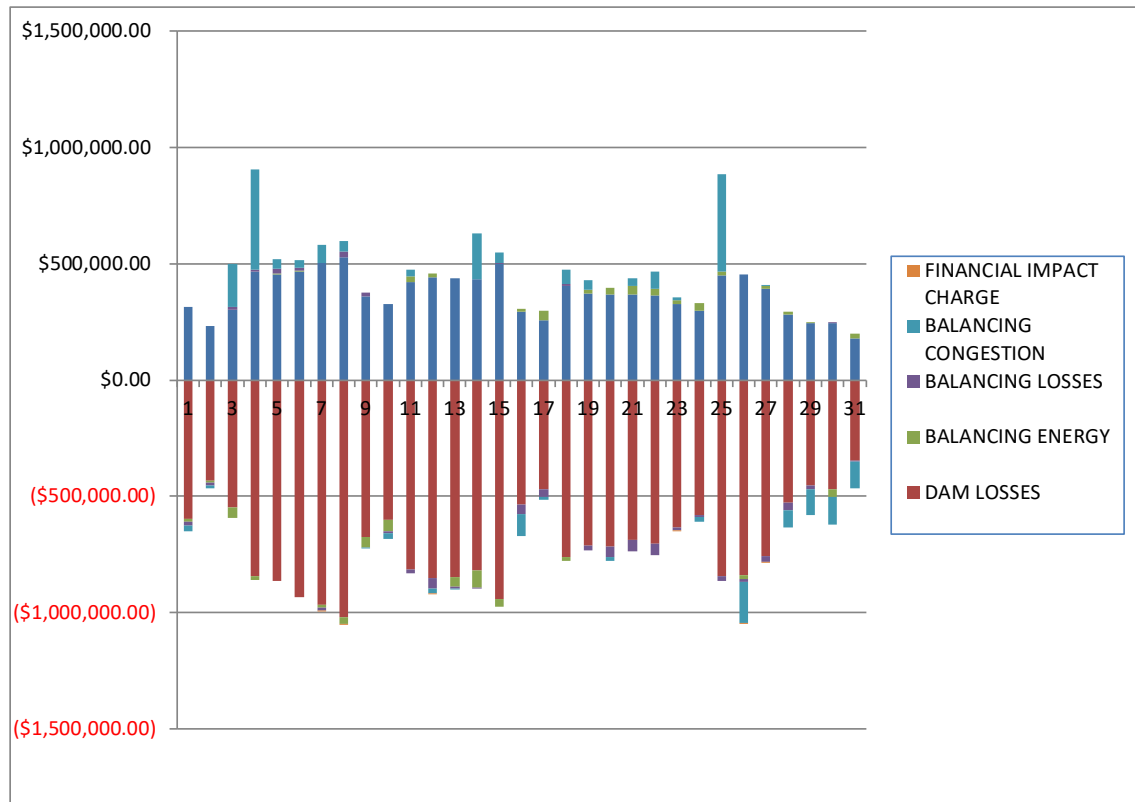
	MONDAY	TUESDAY	WEDNESDAY	THURSDAY	FRIDAY	SATURDAY	SUNDAY
					1	2	3
DAM NYCA					378,471	356,593	372,733
DAM NON-NYCA					17,248	22,132	21,403
DAM WHEELS					8,802	7,340	7,934
DAM VIRTUAL					24,983	19,074	23,630
BALANCING NYCA					(43,168)	(43,411)	(39,393)
BALANCING NON-NYCA					3,922	8,054	4,526
BALANCING WHEELS					(1,602)	(400)	(1,920)
BALANCING VIRTUAL					(24,983)	(19,074)	(23,630)
UFE/LOSSES					64,331	66,967	61,634
	4	5	6	7	8	9	10
DAM NYCA	412,013	402,852	409,120	409,366	410,908	365,560	365,516
DAM NON-NYCA	17,512	22,514	18,604	14,180	25,755	24,458	23,700
DAM WHEELS	9,506	10,287	9,721	8,931	8,229	7,909	8,372
DAM VIRTUAL	28,113	24,325	21,605	19,773	18,107	20,387	24,851
BALANCING NYCA	(31,301)	(43,680)	(50,193)	(39,454)	(45,382)	(44,347)	(50,274)
BALANCING NON-NYCA	5,871	1,807	2,465	4,167	1,336	11,715	10,758
BALANCING WHEELS	(2,306)	(3,087)	(2,527)	(1,731)	(1,029)	(709)	(2,009)
BALANCING VIRTUAL	(28,113)	(24,325)	(21,605)	(19,773)	(18,107)	(20,387)	(24,851)
UFE/LOSSES	63,823	63,427	62,094	59,586	67,164	67,028	66,370
	11	12	13	14	15	16	17
DAM NYCA	394,143	410,097	412,088	415,304	416,899	378,985	353,105
DAM NON-NYCA	22,888	25,097	27,027	25,469	30,019	37,317	39,402
DAM WHEELS	7,846	8,427	8,842	9,137	9,531	7,210	7,310
DAM VIRTUAL	21,796	20,226	18,980	24,640	25,612	23,993	18,524
BALANCING NYCA	(46,390)	(56,399)	(52,763)	(48,894)	(41,054)	(45,114)	(56,297)
BALANCING NON-NYCA	6,806	7,412	5,889	6,334	7,363	11,673	7,453
BALANCING WHEELS	(1,178)	(1,676)	(2,030)	(2,037)	(2,413)	(40)	(2,130)
BALANCING VIRTUAL	(21,796)	(20,226)	(18,980)	(24,640)	(25,612)	(23,993)	(18,524)
UFE/LOSSES	65,595	73,413	70,392	69,002	69,445	81,711	72,906
	18	19	20	21	22	23	24
DAM NYCA	391,037	392,299	395,689	398,616	394,406	356,718	347,795
DAM NON-NYCA	31,149	34,512	30,819	27,735	24,090	16,145	21,028
DAM WHEELS	7,625	8,290	8,093	8,517	9,866	8,041	7,681
DAM VIRTUAL	19,813	19,409	18,141	19,526	19,769	20,813	21,037
BALANCING NYCA	(57,417)	(68,958)	(64,982)	(59,148)	(57,090)	(36,120)	(37,635)
BALANCING NON-NYCA	4,462	9,544	8,447	6,918	7,732	3,218	3,549
BALANCING WHEELS	(3,053)	(2,957)	(2,393)	(3,116)	(2,721)	(1,576)	(1,943)
BALANCING VIRTUAL	(19,813)	(19,409)	(18,141)	(19,526)	(19,769)	(20,813)	(21,037)
UFE/LOSSES	68,428	79,122	78,130	76,173	71,893	53,898	57,240
	25	26	27	28	29	30	31
DAM NYCA	390,874	398,263	395,744	390,748	388,039	357,586	353,576
DAM NON-NYCA	21,531	25,195	20,760	14,051	17,257	15,915	20,676
DAM WHEELS	8,589	8,115	7,469	7,300	7,725	7,412	7,440
DAM VIRTUAL	21,990	17,876	18,194	21,066	21,111	23,614	20,839
BALANCING NYCA	(43,694)	(51,138)	(54,905)	(44,108)	(46,597)	(35,665)	(44,637)
BALANCING NON-NYCA	8,619	13,131	8,167	5,063	10,136	14,493	10,058
BALANCING WHEELS	(1,905)	(910)	(269)	(100)	(520)	(212)	(240)
BALANCING VIRTUAL	(21,990)	(17,876)	(18,194)	(21,066)	(21,111)	(23,614)	(20,839)
UFE/LOSSES	70,412	75,457	68,854	60,328	67,522	63,388	61,633



SETTLEMENTS REPORT
 October 2021 Settlement Adjustment
 March 7, 2022

Initial Settlement – Market Residuals Analysis

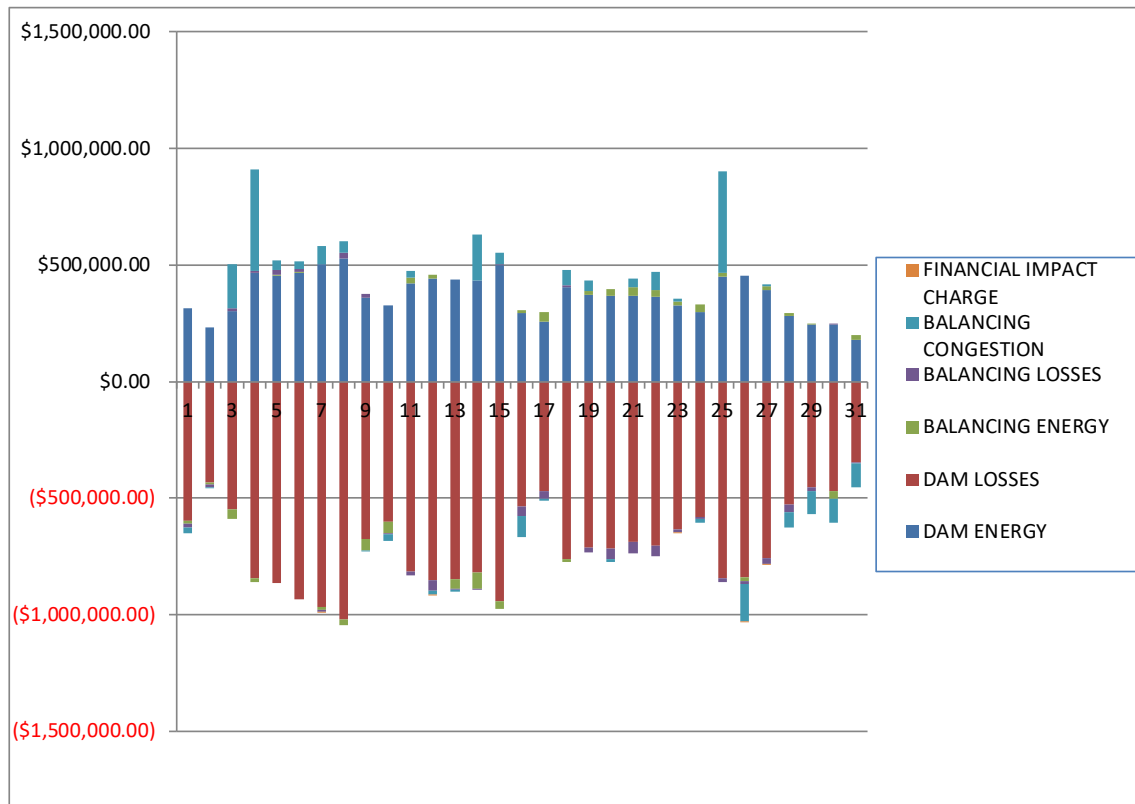
	MONDAY	TUESDAY	WEDNESDAY	THURSDAY	FRIDAY	SATURDAY	SUNDAY
					1	2	3
DAM ENERGY					\$314,283.43	\$230,495.83	\$301,928.99
DAM LOSSES					(\$595,815.52)	(\$432,694.30)	(\$549,884.78)
BALANCING ENERGY					(\$13,377.77)	(\$6,800.87)	(\$44,025.14)
BALANCING LOSSES					(\$18,262.28)	(\$16,201.29)	\$10,544.11
BALANCING CONGESTION					(\$24,438.40)	(\$8,562.31)	\$187,138.94
FINANCIAL IMPACT CHARGE					\$0.00	\$0.00	\$0.00
	4	5	6	7	8	9	10
DAM ENERGY	\$464,514.99	\$454,318.08	\$464,155.26	\$503,524.21	\$529,580.46	\$358,870.91	\$327,059.76
DAM LOSSES	(\$844,229.75)	(\$863,955.55)	(\$933,219.11)	(\$967,692.74)	(\$1,021,465.60)	(\$673,575.59)	(\$602,189.42)
BALANCING ENERGY	(\$15,565.99)	\$4,774.18	\$6,579.57	(\$11,637.28)	(\$26,663.27)	(\$47,663.03)	(\$49,705.34)
BALANCING LOSSES	\$8,093.77	\$17,489.93	\$10,814.83	(\$10,737.40)	\$22,835.79	\$17,592.24	(\$5,271.64)
BALANCING CONGESTION	\$434,142.48	\$42,783.59	\$32,572.38	\$76,594.78	\$46,235.33	(\$1,090.27)	(\$28,226.80)
FINANCIAL IMPACT CHARGE	\$0.00	\$0.00	\$0.00	(\$73.57)	(\$0.64)	\$0.00	\$0.00
	11	12	13	14	15	16	17
DAM ENERGY	\$422,522.59	\$442,301.63	\$438,197.29	\$434,409.26	\$499,573.73	\$293,486.63	\$254,797.13
DAM LOSSES	(\$816,838.26)	(\$850,748.46)	(\$846,363.33)	(\$819,851.47)	(\$941,356.50)	(\$537,542.37)	(\$470,318.18)
BALANCING ENERGY	\$24,669.14	\$15,044.24	(\$41,434.94)	(\$71,556.13)	(\$34,249.21)	\$12,747.31	\$43,209.65
BALANCING LOSSES	(\$16,305.98)	(\$46,111.47)	(\$8,068.75)	(\$2,684.82)	\$2,971.12	(\$38,890.01)	(\$31,377.76)
BALANCING CONGESTION	\$26,575.51	(\$19,791.04)	(\$7,396.84)	\$197,916.76	\$47,721.46	(\$95,575.32)	(\$13,159.65)
FINANCIAL IMPACT CHARGE	\$0.00	(\$13.55)	\$0.00	\$0.00	\$0.00	\$0.00	\$0.00
	18	19	20	21	22	23	24
DAM ENERGY	\$402,773.56	\$371,644.33	\$368,105.88	\$368,204.59	\$363,465.60	\$327,216.01	\$297,503.96
DAM LOSSES	(\$762,518.16)	(\$710,302.08)	(\$716,525.33)	(\$685,791.08)	(\$704,091.49)	(\$632,808.25)	(\$578,990.57)
BALANCING ENERGY	(\$14,649.89)	\$14,729.45	\$26,339.20	\$36,762.76	\$27,112.58	\$13,991.92	\$31,603.96
BALANCING LOSSES	\$11,674.99	(\$20,583.10)	(\$45,320.88)	(\$51,265.83)	(\$48,452.18)	(\$12,983.96)	(\$10,145.02)
BALANCING CONGESTION	\$61,358.37	\$41,818.99	(\$15,776.65)	\$30,889.71	\$73,711.65	\$13,587.66	(\$19,012.90)
FINANCIAL IMPACT CHARGE	\$0.00	\$0.00	\$0.00	\$0.00	\$0.00	(\$657.11)	\$0.00
	25	26	27	28	29	30	31
DAM ENERGY	\$447,731.85	\$452,490.78	\$393,359.52	\$279,698.67	\$242,721.30	\$243,657.78	\$177,696.03
DAM LOSSES	(\$841,783.80)	(\$840,517.52)	(\$757,589.06)	(\$527,700.81)	(\$453,498.66)	(\$470,928.97)	(\$346,850.40)
BALANCING ENERGY	\$16,583.96	(\$14,115.50)	\$11,902.38	\$14,728.37	\$7,300.15	(\$31,626.97)	\$22,679.12
BALANCING LOSSES	(\$20,808.29)	(\$13,399.11)	(\$26,466.75)	(\$32,005.13)	(\$17,106.91)	\$2,055.75	(\$5,822.89)
BALANCING CONGESTION	\$422,055.79	(\$176,577.40)	\$5,096.15	(\$74,316.05)	(\$109,800.85)	(\$120,925.67)	(\$112,289.36)
FINANCIAL IMPACT CHARGE	\$0.00	(\$1,834.69)	(\$73.28)	\$0.00	\$0.00	\$0.00	\$0.00



SETTLEMENTS REPORT
 October 2021 Settlement Adjustment
 March 7, 2022

4-Month Settlement Adjustment – Market Residuals Analysis

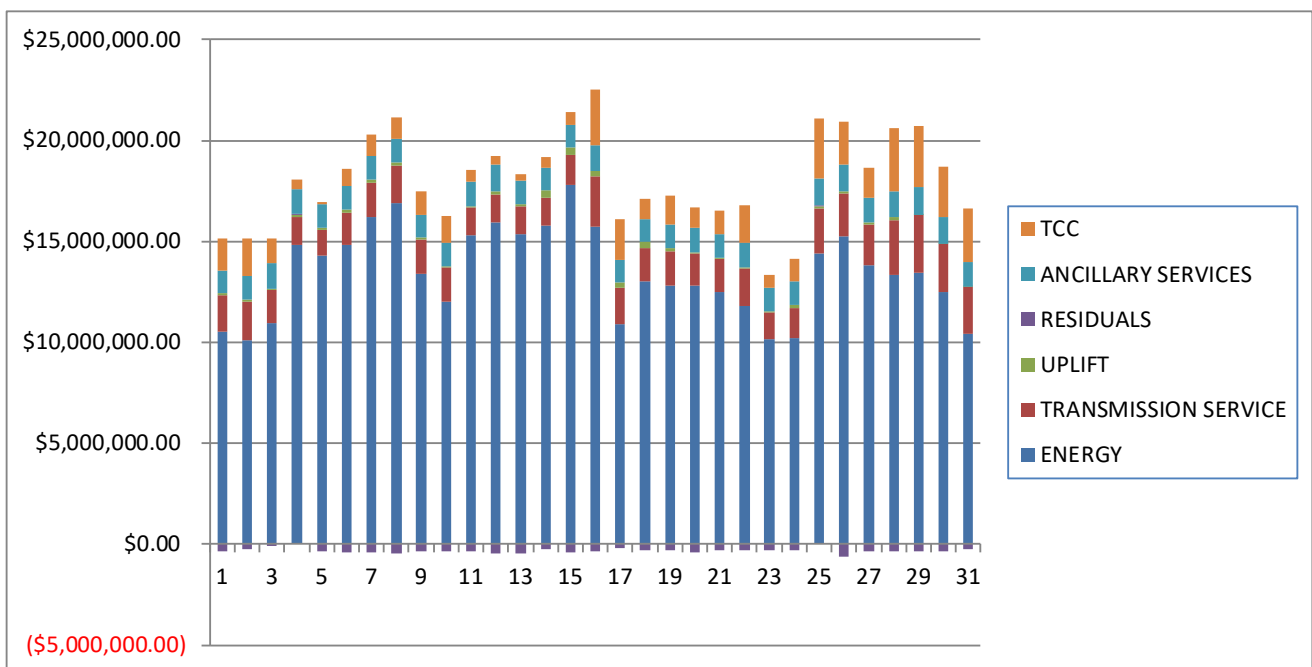
	MONDAY	TUESDAY	WEDNESDAY	THURSDAY	FRIDAY	SATURDAY	SUNDAY
					1	2	3
DAM ENERGY					\$314,283.43	\$230,495.83	\$301,928.99
DAM LOSSES					(\$595,815.53)	(\$432,694.30)	(\$549,884.78)
BALANCING ENERGY					(\$14,154.87)	(\$6,884.38)	(\$40,733.92)
BALANCING LOSSES					(\$17,816.32)	(\$15,977.75)	\$11,300.66
BALANCING CONGESTION					(\$23,095.79)	(\$3,290.86)	\$188,671.83
FINANCIAL IMPACT CHARGE					\$0.00	\$0.00	\$0.00
	4	5	6	7	8	9	10
DAM ENERGY	\$464,514.99	\$454,318.08	\$464,155.26	\$503,524.21	\$529,580.45	\$358,870.91	\$327,059.75
DAM LOSSES	(\$844,229.75)	(\$863,955.56)	(\$933,219.11)	(\$967,692.74)	(\$1,021,465.60)	(\$673,575.59)	(\$602,189.42)
BALANCING ENERGY	(\$15,351.13)	\$4,498.74	\$6,980.03	(\$11,384.54)	(\$24,761.79)	(\$52,107.54)	(\$48,792.35)
BALANCING LOSSES	\$9,227.24	\$18,489.88	\$11,975.71	(\$9,491.57)	\$24,086.01	\$17,985.93	(\$4,814.78)
BALANCING CONGESTION	\$435,963.88	\$42,911.22	\$33,888.18	\$77,250.05	\$47,440.89	(\$620.82)	(\$26,538.32)
FINANCIAL IMPACT CHARGE	\$0.00	\$0.00	\$0.00	(\$73.66)	(\$0.63)	\$0.00	\$0.00
	11	12	13	14	15	16	17
DAM ENERGY	\$422,522.59	\$442,301.63	\$438,197.29	\$434,409.26	\$499,573.73	\$293,486.62	\$254,797.12
DAM LOSSES	(\$816,838.26)	(\$850,748.47)	(\$846,363.33)	(\$819,851.47)	(\$941,356.50)	(\$537,542.37)	(\$470,318.19)
BALANCING ENERGY	\$24,582.34	\$14,618.99	(\$40,527.94)	(\$70,659.67)	(\$33,531.90)	\$12,579.64	\$43,507.96
BALANCING LOSSES	(\$16,057.46)	(\$45,768.73)	(\$8,144.22)	(\$2,439.79)	\$3,045.90	(\$39,238.80)	(\$31,041.91)
BALANCING CONGESTION	\$27,042.58	(\$17,897.83)	(\$6,561.56)	\$197,504.93	\$50,221.64	(\$90,730.94)	(\$10,996.07)
FINANCIAL IMPACT CHARGE	\$0.00	(\$13.51)	\$0.00	\$0.00	\$0.00	\$0.00	\$0.00
	18	19	20	21	22	23	24
DAM ENERGY	\$402,773.57	\$371,644.33	\$368,105.88	\$368,204.60	\$363,465.60	\$327,216.02	\$297,503.96
DAM LOSSES	(\$762,518.15)	(\$710,302.07)	(\$716,525.33)	(\$685,791.08)	(\$704,091.49)	(\$632,808.26)	(\$578,990.57)
BALANCING ENERGY	(\$12,180.75)	\$14,581.48	\$26,283.68	\$36,802.13	\$27,313.98	\$13,829.48	\$31,647.40
BALANCING LOSSES	\$11,856.77	(\$21,431.67)	(\$44,619.11)	(\$49,977.44)	(\$47,184.76)	(\$12,063.01)	(\$9,296.59)
BALANCING CONGESTION	\$62,659.03	\$46,191.40	(\$10,750.58)	\$35,301.06	\$78,893.21	\$13,895.09	(\$16,781.92)
FINANCIAL IMPACT CHARGE	\$0.00	\$0.00	\$0.00	\$0.00	\$0.00	(\$657.16)	\$0.00
	25	26	27	28	29	30	31
DAM ENERGY	\$447,731.85	\$452,490.77	\$393,359.52	\$279,698.67	\$242,721.30	\$243,657.77	\$177,696.03
DAM LOSSES	(\$841,783.80)	(\$840,517.51)	(\$757,589.07)	(\$527,700.82)	(\$453,498.66)	(\$470,928.96)	(\$346,850.40)
BALANCING ENERGY	\$16,913.60	(\$13,652.01)	\$13,271.24	\$14,501.69	\$7,159.08	(\$31,519.23)	\$22,794.77
BALANCING LOSSES	(\$19,911.61)	(\$12,531.85)	(\$25,335.42)	(\$31,425.92)	(\$16,466.29)	\$2,698.62	(\$5,386.69)
BALANCING CONGESTION	\$435,598.89	(\$161,504.08)	\$8,858.56	(\$67,639.96)	(\$99,951.18)	(\$103,709.66)	(\$101,134.02)
FINANCIAL IMPACT CHARGE	\$0.00	(\$1,834.71)	(\$73.27)	\$0.00	\$0.00	\$0.00	\$0.00



SETTLEMENTS REPORT
 October 2021 Settlement Adjustment
 March 7, 2022

Initial Settlement – Market Costs Analysis

	MONDAY	TUESDAY	WEDNESDAY	THURSDAY	FRIDAY	SATURDAY	SUNDAY
					1	2	3
ENERGY					\$10,536,708.54	\$10,088,133.01	\$10,941,485.85
TRANSMISSION SERVICE					\$1,784,807.80	\$1,912,476.50	\$1,661,871.53
UPLIFT					\$136,605.90	\$137,778.81	\$70,066.96
RESIDUALS					(\$337,610.54)	(\$233,762.94)	(\$94,297.88)
ANCILLARY SERVICES					\$1,093,034.43	\$1,153,140.47	\$1,228,972.94
TCC					\$1,571,541.68	\$1,840,677.89	\$1,232,424.43
	4	5	6	7	8	9	10
ENERGY	\$14,831,912.41	\$14,302,410.72	\$14,851,487.32	\$16,213,246.81	\$16,903,826.81	\$13,404,243.20	\$11,996,913.27
TRANSMISSION SERVICE	\$1,372,045.37	\$1,249,339.97	\$1,571,229.85	\$1,705,075.03	\$1,836,776.85	\$1,673,069.41	\$1,732,245.01
UPLIFT	\$108,362.93	\$109,828.89	\$139,457.37	\$167,515.72	\$165,778.64	\$99,663.62	\$42,474.41
RESIDUALS	\$46,955.50	(\$344,589.77)	(\$419,097.07)	(\$410,022.00)	(\$449,477.93)	(\$345,865.74)	(\$358,333.44)
ANCILLARY SERVICES	\$1,222,643.18	\$1,178,226.28	\$1,169,842.07	\$1,145,985.24	\$1,186,380.63	\$1,144,871.29	\$1,189,651.98
TCC	\$476,386.09	\$123,601.96	\$849,972.51	\$1,051,368.71	\$1,045,812.05	\$1,157,943.42	\$1,307,876.77
	11	12	13	14	15	16	17
ENERGY	\$15,321,535.20	\$15,938,769.37	\$15,384,153.88	\$15,771,836.94	\$17,806,388.87	\$15,719,080.68	\$10,882,734.42
TRANSMISSION SERVICE	\$1,342,261.92	\$1,396,769.68	\$1,330,631.10	\$1,400,583.74	\$1,498,284.00	\$2,507,314.30	\$1,832,777.91
UPLIFT	\$55,086.60	\$136,520.46	\$126,359.66	\$350,848.13	\$332,900.78	\$265,385.08	\$272,339.33
RESIDUALS	(\$359,377.00)	(\$459,318.65)	(\$465,066.57)	(\$261,766.40)	(\$425,339.40)	(\$365,773.76)	(\$216,848.81)
ANCILLARY SERVICES	\$1,229,119.55	\$1,330,675.19	\$1,189,601.10	\$1,120,647.35	\$1,160,317.41	\$1,253,684.58	\$1,100,366.43
TCC	\$599,224.80	\$430,126.84	\$312,782.70	\$560,498.93	\$610,124.53	\$2,782,162.22	\$1,993,880.87
	18	19	20	21	22	23	24
ENERGY	\$13,044,159.03	\$12,812,244.59	\$12,827,933.33	\$12,479,515.70	\$11,798,359.91	\$10,148,141.94	\$10,199,933.42
TRANSMISSION SERVICE	\$1,626,621.19	\$1,708,872.13	\$1,562,000.46	\$1,633,827.95	\$1,851,893.31	\$1,333,921.52	\$1,510,979.00
UPLIFT	\$303,213.66	\$142,431.97	\$84,947.22	\$55,195.93	\$62,149.10	\$79,251.99	\$131,919.99
RESIDUALS	(\$301,361.13)	(\$302,692.41)	(\$383,177.78)	(\$301,199.85)	(\$288,253.84)	(\$291,653.73)	(\$279,040.57)
ANCILLARY SERVICES	\$1,106,261.64	\$1,153,129.83	\$1,223,882.64	\$1,191,026.65	\$1,212,780.33	\$1,166,121.24	\$1,161,937.31
TCC	\$1,007,015.99	\$1,449,870.98	\$988,739.30	\$1,159,638.14	\$1,844,221.26	\$625,762.86	\$1,125,095.58
	25	26	27	28	29	30	31
ENERGY	\$14,396,128.77	\$15,269,255.17	\$13,827,641.57	\$13,346,898.03	\$13,462,804.71	\$12,466,828.93	\$10,414,359.01
TRANSMISSION SERVICE	\$2,212,053.45	\$2,099,699.71	\$1,985,861.14	\$2,727,192.75	\$2,836,593.90	\$2,388,567.71	\$2,357,771.10
UPLIFT	\$155,126.55	\$87,825.44	\$105,300.60	\$114,585.25	\$41,361.87	\$24,367.49	\$3,571.69
RESIDUALS	\$23,779.51	(\$593,953.44)	(\$373,771.04)	(\$339,594.95)	(\$330,384.97)	(\$377,768.08)	(\$264,587.50)
ANCILLARY SERVICES	\$1,313,526.61	\$1,358,346.96	\$1,271,442.37	\$1,299,600.05	\$1,358,503.21	\$1,329,264.79	\$1,222,036.06
TCC	\$3,002,567.77	\$2,099,773.64	\$1,467,096.10	\$3,148,402.00	\$3,022,176.23	\$2,480,096.31	\$2,633,665.74



SETTLEMENTS REPORT
 October 2021 Settlement Adjustment
 March 7, 2022

4-Month Settlement Adjustment – Market Costs Analysis

	MONDAY	TUESDAY	WEDNESDAY	THURSDAY	FRIDAY	SATURDAY	SUNDAY
					1	2	3
ENERGY					\$10,545,470.79	\$10,093,015.54	\$10,941,651.10
TRANSMISSION SERVICE					\$1,784,281.08	\$1,911,862.03	\$1,661,013.99
UPLIFT					\$136,564.84	\$137,772.76	\$70,075.28
RESIDUALS					(\$336,599.08)	(\$228,351.46)	(\$88,717.22)
ANCILLARY SERVICES					\$1,083,368.43	\$1,131,308.16	\$1,214,804.18
TCC					\$1,580,776.84	\$1,862,118.02	\$1,245,952.50
	4	5	6	7	8	9	10
ENERGY	\$14,818,921.18	\$14,291,783.79	\$14,837,268.77	\$16,197,465.83	\$16,887,835.35	\$13,404,955.37	\$11,991,699.42
TRANSMISSION SERVICE	\$1,370,777.08	\$1,248,103.75	\$1,569,667.70	\$1,703,637.73	\$1,835,368.84	\$1,671,882.51	\$1,730,811.99
UPLIFT	\$110,713.35	\$111,037.79	\$154,450.43	\$167,517.40	\$165,778.27	\$99,686.50	\$42,397.85
RESIDUALS	\$50,125.23	(\$343,737.64)	(\$416,219.93)	(\$407,868.25)	(\$445,120.67)	(\$349,447.11)	(\$355,275.12)
ANCILLARY SERVICES	\$1,221,827.96	\$1,176,362.91	\$1,166,795.21	\$1,143,119.46	\$1,181,448.87	\$1,150,356.46	\$1,169,371.69
TCC	\$476,193.13	\$124,497.27	\$851,739.79	\$1,053,096.97	\$1,049,648.16	\$1,151,556.10	\$1,327,102.84
	11	12	13	14	15	16	17
ENERGY	\$15,329,626.63	\$15,950,442.05	\$15,406,012.09	\$15,789,076.41	\$17,827,901.52	\$15,748,498.15	\$10,893,738.62
TRANSMISSION SERVICE	\$1,341,233.22	\$1,396,388.35	\$1,330,268.22	\$1,400,273.03	\$1,498,631.93	\$2,507,764.88	\$1,832,659.30
UPLIFT	\$55,086.01	\$137,541.59	\$126,170.50	\$350,773.77	\$332,338.65	\$265,193.96	\$272,324.35
RESIDUALS	(\$358,748.21)	(\$457,507.92)	(\$463,399.76)	(\$261,036.74)	(\$422,047.13)	(\$361,445.85)	(\$214,051.09)
ANCILLARY SERVICES	\$1,228,057.78	\$1,337,735.73	\$1,191,906.75	\$1,121,284.32	\$1,164,547.28	\$1,223,597.76	\$1,076,932.89
TCC	\$599,583.05	\$422,866.50	\$310,329.29	\$559,701.82	\$606,076.72	\$2,812,863.19	\$2,017,350.15
	18	19	20	21	22	23	24
ENERGY	\$13,053,380.28	\$12,825,734.00	\$12,816,493.18	\$12,458,807.36	\$11,779,769.69	\$10,137,526.91	\$10,183,495.33
TRANSMISSION SERVICE	\$1,626,089.17	\$1,708,928.71	\$1,561,306.75	\$1,632,685.79	\$1,850,778.52	\$1,332,734.22	\$1,509,715.46
UPLIFT	\$306,452.30	\$142,468.01	\$84,952.42	\$55,145.29	\$62,250.99	\$79,281.12	\$131,881.67
RESIDUALS	(\$297,409.53)	(\$299,316.53)	(\$377,505.46)	(\$295,460.73)	(\$281,603.46)	(\$290,587.84)	(\$275,917.72)
ANCILLARY SERVICES	\$1,108,441.66	\$1,149,189.43	\$1,223,639.62	\$1,215,500.92	\$1,205,175.67	\$1,156,301.42	\$1,148,297.52
TCC	\$1,004,512.38	\$1,453,991.86	\$988,457.85	\$1,134,221.85	\$1,850,927.38	\$634,645.67	\$1,137,715.70
	25	26	27	28	29	30	31
ENERGY	\$14,360,382.37	\$15,239,858.47	\$13,819,180.75	\$13,333,193.89	\$13,441,131.58	\$12,433,103.23	\$10,392,272.94
TRANSMISSION SERVICE	\$2,211,045.83	\$2,098,817.93	\$1,985,218.03	\$2,725,903.43	\$2,835,037.63	\$2,387,016.12	\$2,356,327.09
UPLIFT	\$155,147.53	\$87,787.10	\$105,288.89	\$114,603.84	\$41,284.99	\$24,382.56	\$3,591.79
RESIDUALS	\$38,548.93	(\$577,549.39)	(\$367,508.44)	(\$332,566.34)	(\$320,035.75)	(\$359,801.46)	(\$252,880.31)
ANCILLARY SERVICES	\$1,309,565.27	\$1,334,771.92	\$1,247,057.69	\$1,254,884.91	\$1,319,018.36	\$1,295,173.50	\$1,184,158.79
TCC	\$3,005,715.22	\$2,122,659.94	\$1,491,242.44	\$3,192,133.26	\$3,060,452.16	\$2,513,017.31	\$2,670,413.89

