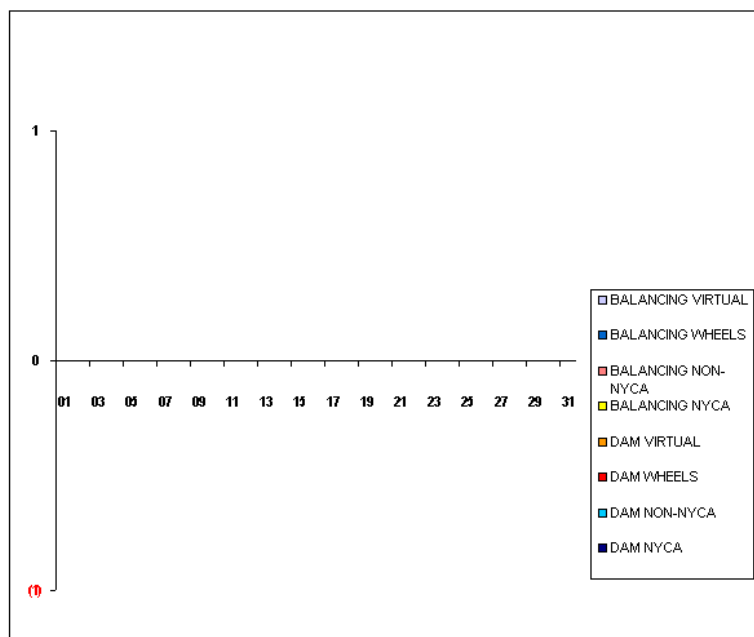


SETTLEMENTS REPORT
October 2009 Close-Out Settlement
July 7, 2010

Close-Out Settlement – Market Supply Delta Analysis

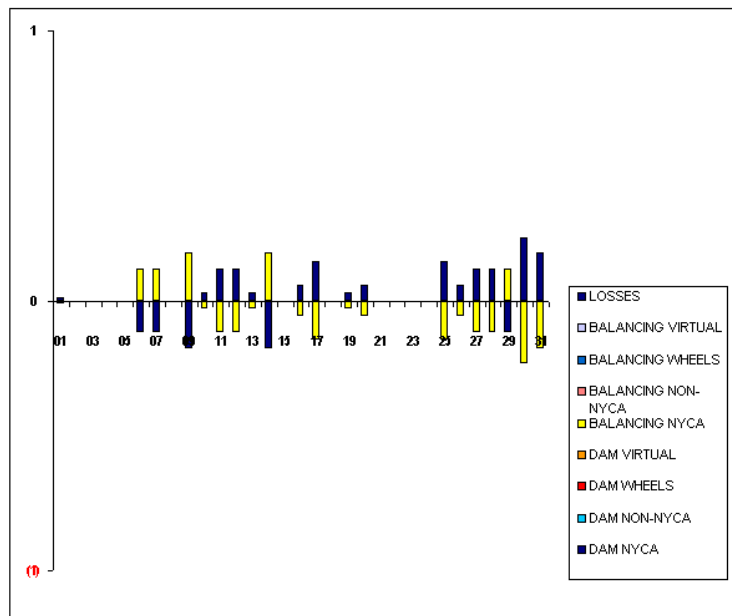
	MONDAY	TUESDAY	WEDNESDAY	THURSDAY	FRIDAY	SATURDAY	SUNDAY
				1	2	3	4
DAM NYCA				0	0	0	0
DAM NON-NYCA				0	0	0	0
DAM WHEELS				0	0	0	0
DAM VIRTUAL				0	0	0	0
BALANCING NYCA				0	0	0	0
BALANCING NON-NYCA				0	0	0	0
BALANCING WHEELS				0	0	0	0
BALANCING VIRTUAL				0	0	0	0
	5	6	7	8	9	10	11
DAM NYCA	0	0	0	0	0	0	0
DAM NON-NYCA	0	0	0	0	0	0	0
DAM WHEELS	0	0	0	0	0	0	0
DAM VIRTUAL	0	0	0	0	0	0	0
BALANCING NYCA	0	0	0	0	0	0	0
BALANCING NON-NYCA	0	0	0	0	0	0	0
BALANCING WHEELS	0	0	0	0	0	0	0
BALANCING VIRTUAL	0	0	0	0	0	0	0
	12	13	14	15	16	17	18
DAM NYCA	0	0	0	0	0	0	0
DAM NON-NYCA	0	0	0	0	0	0	0
DAM WHEELS	0	0	0	0	0	0	0
DAM VIRTUAL	0	0	0	0	0	0	0
BALANCING NYCA	0	0	0	0	0	0	0
BALANCING NON-NYCA	0	0	0	0	0	0	0
BALANCING WHEELS	0	0	0	0	0	0	0
BALANCING VIRTUAL	0	0	0	0	0	0	0
	19	20	21	22	23	24	25
DAM NYCA	0	0	0	0	0	0	0
DAM NON-NYCA	0	0	0	0	0	0	0
DAM WHEELS	0	0	0	0	0	0	0
DAM VIRTUAL	0	0	0	0	0	0	0
BALANCING NYCA	0	0	0	0	0	0	0
BALANCING NON-NYCA	0	0	0	0	0	0	0
BALANCING WHEELS	0	0	0	0	0	0	0
BALANCING VIRTUAL	0	0	0	0	0	0	0
	26	27	28	29	30	31	
DAM NYCA	0	0	0	0	0	0	
DAM NON-NYCA	0	0	0	0	0	0	
DAM WHEELS	0	0	0	0	0	0	
DAM VIRTUAL	0	0	0	0	0	0	
BALANCING NYCA	0	0	0	0	0	0	
BALANCING NON-NYCA	0	0	0	0	0	0	
BALANCING WHEELS	0	0	0	0	0	0	
BALANCING VIRTUAL	0	0	0	0	0	0	



SETTLEMENTS REPORT
October 2009 Close-Out Settlement
July 7, 2010

Close-Out Settlement – Market Withdrawals Delta Analysis

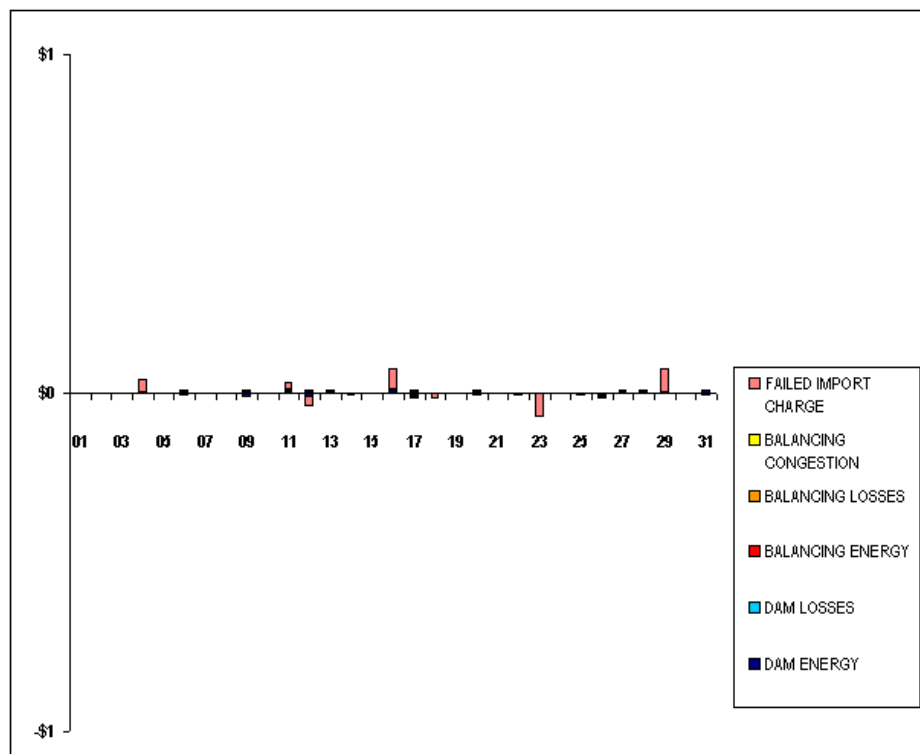
	MONDAY	TUESDAY	WEDNESDAY	THURSDAY	FRIDAY	SATURDAY	SUNDAY
				1	2	3	4
DAM NYCA				0	0	0	0
DAM NON-NYCA				0	0	0	0
DAM WHEELS				0	0	0	0
DAM VIRTUAL				0	0	0	0
BALANCING NYCA				(0)	0	0	0
BALANCING NON-NYCA				0	0	0	0
BALANCING WHEELS				0	0	0	0
BALANCING VIRTUAL				0	0	0	0
UFE/LOSSES				0	0	0	0
	5	6	7	8	9	10	11
DAM NYCA	0	0	0	0	0	0	0
DAM NON-NYCA	0	0	0	0	0	0	0
DAM WHEELS	0	0	0	0	0	0	0
DAM VIRTUAL	0	0	0	0	0	0	0
BALANCING NYCA	0	0	0	0	0	(0)	(0)
BALANCING NON-NYCA	0	0	0	0	0	0	0
BALANCING WHEELS	0	0	0	0	0	0	0
BALANCING VIRTUAL	0	0	0	0	0	0	0
UFE/LOSSES	0	(0)	(0)	0	(0)	0	0
	12	13	14	15	16	17	18
DAM NYCA	0	0	0	0	0	0	0
DAM NON-NYCA	0	0	0	0	0	0	0
DAM WHEELS	0	0	0	0	0	0	0
DAM VIRTUAL	0	0	0	0	0	0	0
BALANCING NYCA	(0)	(0)	0	0	(0)	(0)	0
BALANCING NON-NYCA	0	0	0	0	0	0	0
BALANCING WHEELS	0	0	0	0	0	0	0
BALANCING VIRTUAL	0	0	0	0	0	0	0
UFE/LOSSES	0	0	(0)	0	0	0	0
	19	20	21	22	23	24	25
DAM NYCA	0	0	0	0	0	0	0
DAM NON-NYCA	0	0	0	0	0	0	0
DAM WHEELS	0	0	0	0	0	0	0
DAM VIRTUAL	0	0	0	0	0	0	0
BALANCING NYCA	(0)	(0)	0	0	0	0	(0)
BALANCING NON-NYCA	0	0	0	0	0	0	0
BALANCING WHEELS	0	0	0	0	0	0	0
BALANCING VIRTUAL	0	0	0	0	0	0	0
UFE/LOSSES	0	0	0	0	0	0	0
	26	27	28	29	30	31	
DAM NYCA	0	0	0	0	0	0	
DAM NON-NYCA	0	0	0	0	0	0	
DAM WHEELS	0	0	0	0	0	0	
DAM VIRTUAL	0	0	0	0	0	0	
BALANCING NYCA	(0)	(0)	(0)	0	(0)	(0)	
BALANCING NON-NYCA	0	0	0	0	0	0	
BALANCING WHEELS	0	0	0	0	0	0	
BALANCING VIRTUAL	0	0	0	0	0	0	
UFE/LOSSES	0	0	0	(0)	0	0	



SETTLEMENTS REPORT
October 2009 Close-Out Settlement
July 7, 2010

Close-Out Settlement – Market Residuals Delta Analysis

	MONDAY	TUESDAY	WEDNESDAY	THURSDAY	FRIDAY	SATURDAY	SUNDAY
				1	2	3	4
DAM ENERGY				\$0.00	\$0.00	\$0.00	\$0.00
DAM LOSSES				\$0.00	\$0.00	\$0.00	\$0.00
BALANCING ENERGY				\$0.00	\$0.00	\$0.00	\$0.00
BALANCING LOSSES				\$0.00	\$0.00	\$0.00	\$0.00
BALANCING CONGESTION				\$0.00	\$0.00	\$0.00	\$0.00
FAILED IMPORT CHARGE				\$0.00	\$0.00	\$0.00	\$0.04
	5	6	7	8	9	10	11
DAM ENERGY	\$0.00	\$0.00	\$0.00	\$0.00	(\$0.01)	\$0.00	\$0.00
DAM LOSSES	\$0.00	\$0.01	\$0.00	\$0.00	\$0.00	\$0.00	\$0.01
BALANCING ENERGY	\$0.00	\$0.00	\$0.00	\$0.00	\$0.00	\$0.00	\$0.00
BALANCING LOSSES	\$0.00	\$0.00	\$0.00	\$0.00	\$0.01	\$0.00	\$0.00
BALANCING CONGESTION	\$0.00	\$0.00	\$0.00	\$0.00	\$0.00	\$0.00	\$0.00
FAILED IMPORT CHARGE	\$0.00	(\$0.01)	\$0.00	\$0.00	\$0.00	\$0.00	\$0.02
	12	13	14	15	16	17	18
DAM ENERGY	(\$0.01)	\$0.00	\$0.00	\$0.00	\$0.01	\$0.00	\$0.00
DAM LOSSES	\$0.01	\$0.00	(\$0.01)	\$0.00	\$0.00	(\$0.01)	\$0.00
BALANCING ENERGY	\$0.00	\$0.00	\$0.00	\$0.00	\$0.00	(\$0.01)	\$0.00
BALANCING LOSSES	\$0.00	\$0.00	\$0.00	\$0.00	\$0.00	\$0.00	\$0.00
BALANCING CONGESTION	\$0.00	\$0.00	\$0.00	\$0.00	\$0.00	\$0.00	\$0.00
FAILED IMPORT CHARGE	(\$0.03)	\$0.01	\$0.00	\$0.00	\$0.06	\$0.01	(\$0.02)
	19	20	21	22	23	24	25
DAM ENERGY	\$0.00	\$0.00	\$0.00	\$0.00	\$0.00	\$0.00	\$0.00
DAM LOSSES	\$0.00	\$0.00	\$0.00	\$0.00	\$0.00	\$0.00	\$0.00
BALANCING ENERGY	\$0.00	\$0.01	\$0.00	\$0.00	\$0.00	\$0.00	\$0.00
BALANCING LOSSES	\$0.00	\$0.00	\$0.00	\$0.00	\$0.00	\$0.00	\$0.00
BALANCING CONGESTION	\$0.00	\$0.00	\$0.00	\$0.00	\$0.00	\$0.00	\$0.00
FAILED IMPORT CHARGE	\$0.00	(\$0.01)	\$0.00	(\$0.01)	(\$0.07)	\$0.00	(\$0.01)
	26	27	28	29	30	31	
DAM ENERGY	\$0.00	\$0.00	\$0.00	\$0.00	\$0.00	\$0.01	
DAM LOSSES	\$0.00	\$0.01	\$0.00	\$0.00	\$0.00	(\$0.01)	
BALANCING ENERGY	\$0.00	\$0.00	\$0.01	\$0.00	\$0.00	\$0.00	
BALANCING LOSSES	\$0.00	\$0.00	\$0.00	\$0.00	\$0.00	\$0.00	
BALANCING CONGESTION	(\$0.01)	\$0.00	\$0.00	\$0.00	\$0.00	\$0.00	
FAILED IMPORT CHARGE	(\$0.01)	\$0.00	\$0.00	\$0.07	\$0.00	\$0.00	

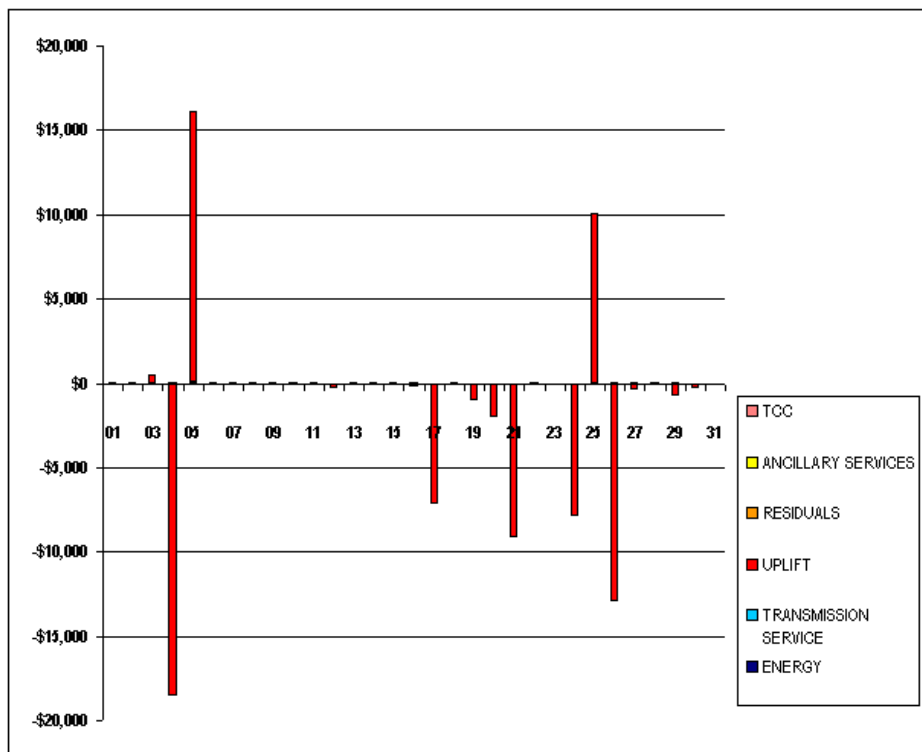


FOR DISCUSSION PURPOSES ONLY

SETTLEMENTS REPORT
October 2009 Close-Out Settlement
July 7, 2010

Close-Out Settlement – Market Costs Delta Analysis

	MONDAY	TUESDAY	WEDNESDAY	THURSDAY	FRIDAY	SATURDAY	SUNDAY
				1	2	3	4
ENERGY				\$0.05	\$0.04	(\$0.03)	(\$0.01)
TRANSMISSION SERVICE				\$0.01	\$0.00	\$0.00	\$0.00
UPLIFT				(\$119.77)	(\$49.36)	\$511.69	(\$18,532.01)
RESIDUALS				\$0.00	\$0.00	\$0.00	\$0.04
ANCILLARY SERVICES				\$0.01	\$0.00	\$0.00	\$0.00
TCC				\$0.00	\$0.00	\$0.00	\$0.00
	5	6	7	8	9	10	11
ENERGY	\$0.11	(\$0.14)	\$0.01	\$0.03	\$0.09	\$0.22	\$0.06
TRANSMISSION SERVICE	\$0.00	\$0.08	\$0.08	\$0.00	\$0.11	(\$0.01)	(\$0.06)
UPLIFT	\$16,095.77	(\$9.11)	\$0.00	(\$18.27)	(\$31.55)	(\$21.26)	\$0.00
RESIDUALS	\$0.00	\$0.00	\$0.00	\$0.00	\$0.00	\$0.00	\$0.03
ANCILLARY SERVICES	\$0.00	\$0.12	\$0.12	\$0.00	\$0.18	(\$0.02)	(\$0.11)
TCC	\$0.00	\$0.00	\$0.00	\$0.00	\$0.00	\$0.00	\$0.00
	12	13	14	15	16	17	18
ENERGY	(\$0.17)	(\$0.09)	(\$0.22)	\$0.09	(\$0.03)	(\$0.05)	\$0.12
TRANSMISSION SERVICE	(\$0.09)	\$0.00	\$0.13	\$0.00	(\$0.03)	(\$0.09)	\$0.00
UPLIFT	(\$352.18)	(\$2.24)	(\$2.86)	(\$24.72)	(\$253.20)	(\$7,194.64)	(\$130.71)
RESIDUALS	(\$0.03)	\$0.01	(\$0.01)	\$0.00	\$0.07	(\$0.01)	(\$0.02)
ANCILLARY SERVICES	(\$0.14)	(\$0.01)	\$0.19	\$0.00	(\$0.06)	(\$0.14)	\$0.00
TCC	\$0.00	\$0.00	\$0.00	\$0.00	\$0.00	\$0.00	\$0.00
	19	20	21	22	23	24	25
ENERGY	(\$0.03)	(\$0.14)	(\$0.11)	\$0.16	(\$0.08)	(\$0.02)	(\$0.05)
TRANSMISSION SERVICE	(\$0.01)	(\$0.03)	\$0.00	\$0.00	\$0.00	\$0.00	(\$0.09)
UPLIFT	(\$1,024.13)	(\$2,065.02)	(\$9,192.44)	(\$0.01)	\$0.00	(\$7,901.97)	\$10,092.09
RESIDUALS	\$0.00	\$0.00	\$0.00	(\$0.01)	(\$0.07)	\$0.00	(\$0.01)
ANCILLARY SERVICES	(\$0.01)	(\$0.04)	\$0.00	\$0.00	\$0.00	\$0.00	(\$0.14)
TCC	\$0.00	\$0.00	\$0.00	\$0.00	\$0.00	\$0.00	\$0.00
	26	27	28	29	30	31	
ENERGY	\$0.03	(\$0.21)	(\$0.12)	(\$0.15)	(\$0.02)	\$0.00	
TRANSMISSION SERVICE	(\$0.04)	(\$0.08)	(\$0.08)	\$0.08	(\$0.16)	(\$0.12)	
UPLIFT	(\$12,926.36)	(\$394.06)	\$0.00	(\$731.29)	(\$329.36)	\$0.00	
RESIDUALS	(\$0.02)	\$0.01	\$0.01	\$0.07	\$0.00	\$0.00	
ANCILLARY SERVICES	(\$0.06)	(\$0.13)	(\$0.12)	\$0.12	(\$0.25)	(\$0.19)	
TCC	\$0.00	\$0.00	\$0.00	\$0.00	\$0.00	\$0.00	



FOR DISCUSSION PURPOSES ONLY

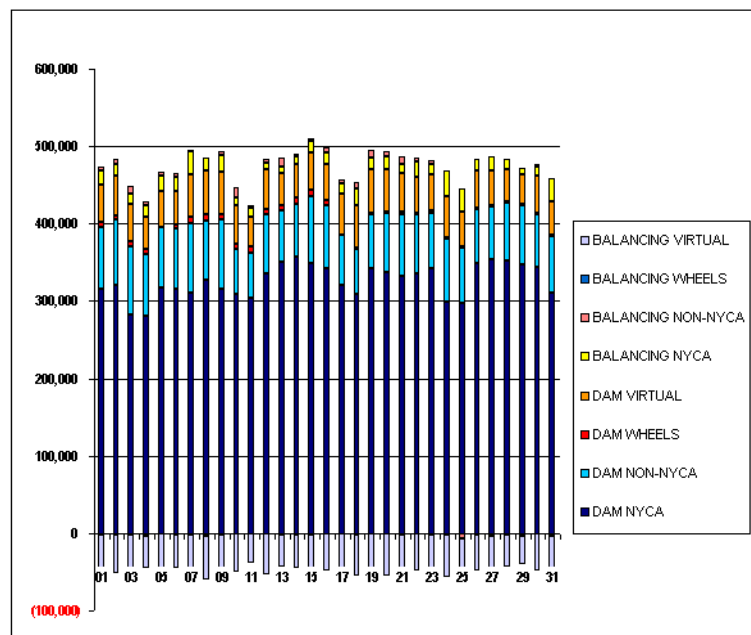
SETTLEMENTS REPORT

October 2009 Close-Out Settlement

July 7, 2010

4-Month Settlement Adjustment – Market Supply Analysis

	MONDAY	TUESDAY	WEDNESDAY	THURSDAY	FRIDAY	SATURDAY	SUNDAY
				1	2	3	4
DAM NYCA				316,059	320,175	282,531	281,011
DAM NON-NYCA				79,730	84,693	88,222	79,424
DAM WHEELS				6,027	5,711	5,759	6,200
DAM VIRTUAL				47,713	50,710	48,191	41,701
BALANCING NYCA				18,331	16,433	13,611	15,688
BALANCING NON-NYCA				6,284	5,846	11,205	5,445
BALANCING WHEELS				(2,083)	(1,847)	(1,985)	(2,850)
BALANCING VIRTUAL				(47,713)	(50,710)	(48,191)	(41,701)
	5	6	7	8	9	10	11
DAM NYCA	317,284	314,850	311,178	326,568	315,583	309,335	303,547
DAM NON-NYCA	77,824	79,486	90,062	78,057	90,064	58,332	58,885
DAM WHEELS	0	4,767	6,783	7,524	6,607	6,647	8,064
DAM VIRTUAL	47,656	42,772	54,815	55,861	53,936	50,243	38,173
BALANCING NYCA	19,942	17,816	30,136	16,433	22,335	8,817	11,327
BALANCING NON-NYCA	4,234	5,123	1,714	(2,673)	4,970	14,424	3,404
BALANCING WHEELS	0	(2,660)	(1,255)	(1,357)	(1,141)	(185)	(1,028)
BALANCING VIRTUAL	(47,656)	(42,772)	(54,815)	(55,861)	(53,936)	(50,243)	(38,173)
	12	13	14	15	16	17	18
DAM NYCA	336,215	349,925	357,334	348,228	341,946	320,978	309,417
DAM NON-NYCA	75,399	66,490	68,518	87,738	81,509	64,715	58,574
DAM WHEELS	6,464	7,987	8,593	8,267	6,568	269	1,271
DAM VIRTUAL	52,998	41,278	43,113	48,357	47,308	52,193	53,729
BALANCING NYCA	7,489	8,356	9,575	14,727	14,002	14,206	22,148
BALANCING NON-NYCA	4,355	11,405	2,938	2,838	6,865	4,584	9,248
BALANCING WHEELS	(130)	(2,026)	(1,867)	(2,142)	(664)	(40)	(1,163)
BALANCING VIRTUAL	(52,998)	(41,278)	(43,113)	(48,357)	(47,308)	(52,193)	(53,729)
	19	20	21	22	23	24	25
DAM NYCA	342,262	338,065	332,293	336,046	341,828	299,637	296,877
DAM NON-NYCA	69,404	76,360	80,272	76,335	72,601	80,393	72,766
DAM WHEELS	1,509	1,681	2,240	1,230	2,290	2,232	1,024
DAM VIRTUAL	56,990	54,127	50,540	47,466	46,385	53,483	44,422
BALANCING NYCA	15,348	17,359	11,625	18,851	13,624	33,459	30,762
BALANCING NON-NYCA	10,463	6,372	9,454	5,907	5,887	(898)	(6,573)
BALANCING WHEELS	(828)	(674)	(1,605)	(970)	(1,929)	(1,627)	(49)
BALANCING VIRTUAL	(56,990)	(54,127)	(50,540)	(47,466)	(46,385)	(53,483)	(44,422)
	26	27	28	29	30	31	
DAM NYCA	349,493	353,270	352,005	347,029	343,444	311,139	
DAM NON-NYCA	70,010	68,939	74,841	77,539	68,863	72,489	
DAM WHEELS	1,592	1,800	1,081	1,200	1,220	2,222	
DAM VIRTUAL	48,026	43,972	41,684	37,194	47,917	42,166	
BALANCING NYCA	15,226	18,419	13,597	8,719	12,572	30,549	
BALANCING NON-NYCA	(504)	(2,267)	(1,270)	(2,268)	2,568	(953)	
BALANCING WHEELS	(733)	(1,700)	(500)	(950)	(670)	(2,128)	
BALANCING VIRTUAL	(48,026)	(43,972)	(41,684)	(37,194)	(47,917)	(42,166)	

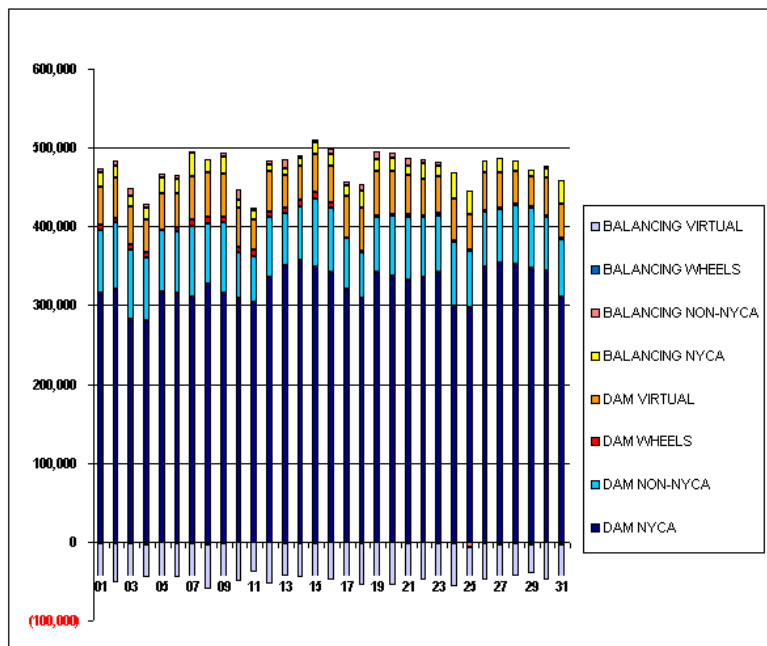


FOR DISCUSSION PURPOSES ONLY

SETTLEMENTS REPORT
October 2009 Close-Out Settlement
July 7, 2010

Close-Out Settlement – Market Supply Analysis

	MONDAY	TUESDAY	WEDNESDAY	THURSDAY	FRIDAY	SATURDAY	SUNDAY
				1	2	3	4
DAM NYCA				316,059	320,175	282,531	281,011
DAM NON-NYCA				79,730	84,693	88,222	79,424
DAM WHEELS				6,027	5,711	5,759	6,200
DAM VIRTUAL				47,713	50,710	48,191	41,701
BALANCING NYCA				18,331	16,433	13,611	15,698
BALANCING NON-NYCA				6,284	5,846	11,205	5,445
BALANCING WHEELS				(2,093)	(1,847)	(1,985)	(2,850)
BALANCING VIRTUAL				(47,713)	(50,710)	(48,191)	(41,701)
	5	6	7	8	9	10	11
DAM NYCA	317,284	314,850	311,178	326,568	315,583	309,335	303,547
DAM NON-NYCA	77,824	79,486	90,062	78,057	90,064	58,332	58,885
DAM WHEELS	0	4,767	6,783	7,524	6,607	6,647	8,064
DAM VIRTUAL	47,656	42,772	54,815	55,861	53,936	50,243	38,173
BALANCING NYCA	19,942	17,816	30,138	16,433	22,335	8,817	11,327
BALANCING NON-NYCA	4,234	5,123	1,714	(2,673)	4,970	14,424	3,404
BALANCING WHEELS	0	(2,660)	(1,255)	(1,357)	(1,141)	(185)	(1,028)
BALANCING VIRTUAL	(47,656)	(42,772)	(54,815)	(55,861)	(53,936)	(50,243)	(38,173)
	12	13	14	15	16	17	18
DAM NYCA	336,215	349,925	357,334	348,228	341,946	320,978	309,417
DAM NON-NYCA	75,399	66,490	68,518	87,738	81,509	64,715	58,574
DAM WHEELS	6,464	7,987	8,593	8,267	6,568	269	1,271
DAM VIRTUAL	52,998	41,278	43,113	48,357	47,308	52,193	53,729
BALANCING NYCA	7,489	8,356	9,575	14,727	14,002	14,206	22,148
BALANCING NON-NYCA	4,355	11,405	2,938	2,838	6,865	4,584	9,248
BALANCING WHEELS	(130)	(2,026)	(1,867)	(2,142)	(664)	(40)	(1,163)
BALANCING VIRTUAL	(52,998)	(41,278)	(43,113)	(48,357)	(47,308)	(52,193)	(53,729)
	19	20	21	22	23	24	25
DAM NYCA	342,262	338,065	332,293	336,046	341,828	299,637	296,877
DAM NON-NYCA	69,404	76,360	80,272	76,335	72,601	80,393	72,766
DAM WHEELS	1,509	1,681	2,240	1,230	2,290	2,232	1,024
DAM VIRTUAL	56,990	54,127	50,540	47,466	46,385	53,483	44,422
BALANCING NYCA	15,348	17,359	11,625	18,851	13,624	33,459	30,762
BALANCING NON-NYCA	10,463	6,372	9,454	5,907	5,887	(898)	(6,573)
BALANCING WHEELS	(828)	(674)	(1,605)	(970)	(1,829)	(1,627)	(49)
BALANCING VIRTUAL	(56,990)	(54,127)	(50,540)	(47,466)	(46,385)	(53,483)	(44,422)
	26	27	28	29	30	31	
DAM NYCA	349,493	353,270	352,005	347,029	343,444	311,139	
DAM NON-NYCA	70,010	68,939	74,841	77,539	68,863	72,489	
DAM WHEELS	1,592	1,800	1,081	1,200	1,220	2,222	
DAM VIRTUAL	48,026	43,972	41,684	37,194	47,817	42,166	
BALANCING NYCA	15,226	18,419	13,597	8,719	12,572	30,549	
BALANCING NON-NYCA	(504)	(2,267)	(1,270)	(2,268)	2,568	(953)	
BALANCING WHEELS	(733)	(1,700)	(500)	(950)	(670)	(2,128)	
BALANCING VIRTUAL	(48,026)	(43,972)	(41,684)	(37,194)	(47,817)	(42,166)	



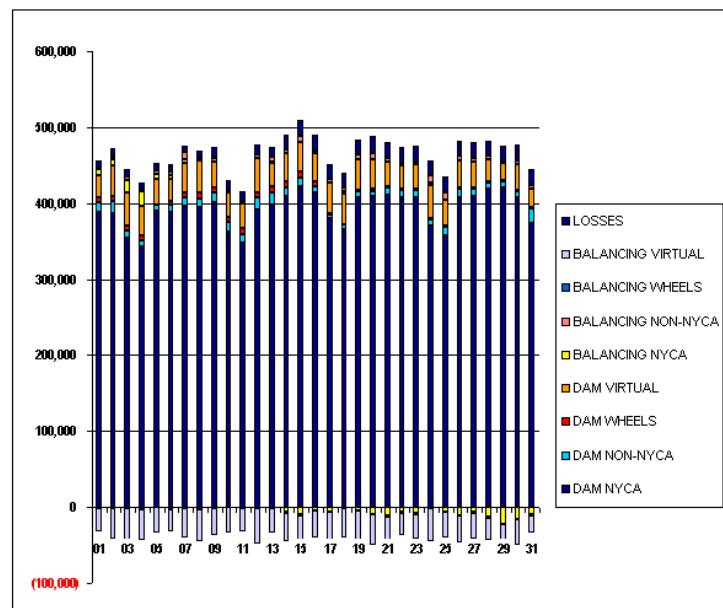
SETTLEMENTS REPORT

October 2009 Close-Out Settlement

July 7, 2010

4-Month Settlement Adjustment – Market Withdrawals Analysis

	MONDAY	TUESDAY	WEDNESDAY	THURSDAY	FRIDAY	SATURDAY	SUNDAY
				1	2	3	4
DAM NYCA				388,338	385,874	354,753	343,395
DAM NON-NYCA				12,761	17,632	9,589	7,105
DAM WHEELS				6,027	5,711	5,759	6,200
DAM VIRTUAL				30,268	39,893	44,058	39,777
BALANCING NYCA				6,692	9,013	15,681	18,631
BALANCING NON-NYCA				1,458	2,220	4,941	2,574
BALANCING WHEELS				(2,083)	(1,847)	(1,985)	(2,850)
BALANCING VIRTUAL				(30,268)	(39,893)	(44,058)	(39,777)
UFE/LOSSES				10,837	11,387	9,755	9,423
	5	6	7	8	9	10	11
DAM NYCA	389,032	388,722	396,268	394,315	400,375	362,080	347,300
DAM NON-NYCA	8,104	8,557	10,824	11,856	12,923	12,642	12,439
DAM WHEELS	0	4,767	6,783	7,524	6,607	6,647	8,064
DAM VIRTUAL	34,220	29,164	38,269	42,860	34,820	32,753	31,067
BALANCING NYCA	6,811	5,862	6,256	(1,145)	(812)	(24)	146
BALANCING NON-NYCA	5,580	4,626	6,255	3,029	4,864	1,795	3,008
BALANCING WHEELS	0	(2,660)	(1,255)	(1,357)	(1,141)	(185)	(1,028)
BALANCING VIRTUAL	(34,220)	(29,164)	(38,269)	(42,860)	(34,820)	(32,753)	(31,067)
UFE/LOSSES	8,643	8,909	8,996	9,757	14,767	13,874	13,710
	12	13	14	15	16	17	18
DAM NYCA	390,826	398,667	408,920	422,621	414,125	379,332	365,384
DAM NON-NYCA	16,161	15,407	11,173	11,095	8,305	6,464	5,926
DAM WHEELS	6,464	7,987	8,593	8,267	6,568	269	1,271
DAM VIRTUAL	46,322	31,215	37,126	39,146	36,016	40,583	39,516
BALANCING NYCA	(1,740)	1,730	(6,713)	(9,170)	(4,037)	(5,965)	3,333
BALANCING NON-NYCA	4,102	5,667	5,491	7,936	4,701	5,646	5,727
BALANCING WHEELS	(130)	(2,026)	(1,867)	(2,142)	(664)	(40)	(1,163)
BALANCING VIRTUAL	(46,322)	(31,215)	(37,126)	(39,146)	(36,016)	(40,583)	(39,516)
UFE/LOSSES	13,842	13,883	19,399	20,630	20,923	18,867	18,549
	19	20	21	22	23	24	25
DAM NYCA	407,896	409,125	410,111	407,713	407,171	369,927	357,807
DAM NON-NYCA	7,456	7,385	9,779	10,135	9,722	8,595	11,472
DAM WHEELS	1,509	1,681	2,240	1,230	2,290	2,232	1,024
DAM VIRTUAL	40,647	39,765	32,181	30,420	32,081	43,805	34,319
BALANCING NYCA	(4,148)	(8,723)	(11,849)	(6,338)	(8,268)	1,884	(5,912)
BALANCING NON-NYCA	6,216	8,607	4,735	3,815	3,730	9,874	9,608
BALANCING WHEELS	(828)	(674)	(1,605)	(970)	(1,929)	(1,627)	(49)
BALANCING VIRTUAL	(40,647)	(39,765)	(32,181)	(30,420)	(32,081)	(43,805)	(34,319)
UFE/LOSSES	19,842	21,233	20,737	21,092	20,718	20,772	20,307
	26	27	28	29	30	31	
DAM NYCA	407,369	409,526	419,048	420,054	407,402	372,902	
DAM NON-NYCA	11,609	9,067	8,030	8,978	8,348	19,830	
DAM WHEELS	1,592	1,800	1,081	1,200	1,220	2,222	
DAM VIRTUAL	35,989	34,281	29,448	22,226	33,989	23,340	
BALANCING NYCA	(10,735)	(6,545)	(13,293)	(21,750)	(15,477)	(8,771)	
BALANCING NON-NYCA	6,506	4,929	4,736	2,113	4,567	5,003	
BALANCING WHEELS	(733)	(1,700)	(500)	(950)	(670)	(2,128)	
BALANCING VIRTUAL	(35,989)	(34,281)	(29,448)	(22,226)	(33,989)	(23,340)	
UFE/LOSSES	19,075	20,587	20,230	21,518	21,349	22,202	



FOR DISCUSSION PURPOSES ONLY

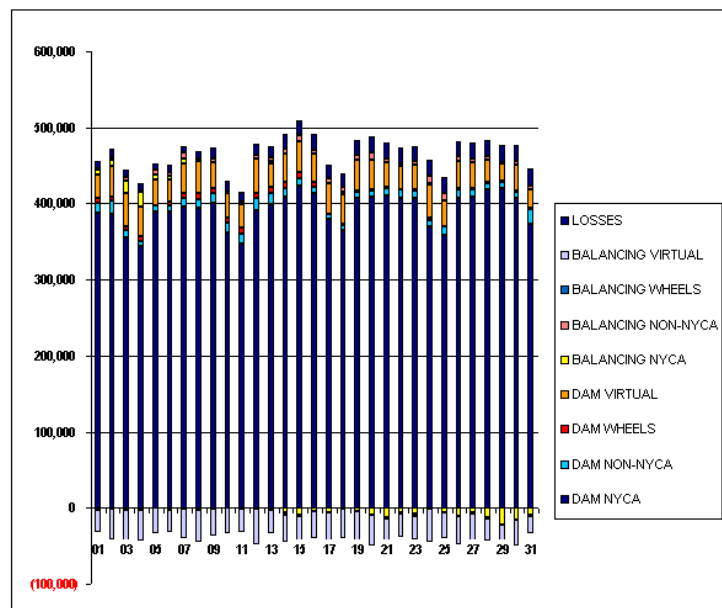
SETTLEMENTS REPORT

October 2009 Close-Out Settlement

July 7, 2010

Close-Out Settlement – Market Withdrawals Analysis

	MONDAY	TUESDAY	WEDNESDAY	THURSDAY	FRIDAY	SATURDAY	SUNDAY
				1	2	3	4
DAM NYCA				388,338	385,874	354,753	343,395
DAM NON-NYCA				12,761	17,632	9,589	7,105
DAM WHEELS				6,027	5,711	5,759	6,200
DAM VIRTUAL				30,268	39,893	44,058	39,777
BALANCING NYCA				6,682	9,013	15,681	18,631
BALANCING NON-NYCA				1,458	2,220	4,941	2,574
BALANCING WHEELS				(2,083)	(1,847)	(1,985)	(2,850)
BALANCING VIRTUAL				(30,268)	(39,893)	(44,058)	(39,777)
UFE/LOSSES				10,657	11,367	9,755	9,423
	5	6	7	8	9	10	11
DAM NYCA	389,032	388,722	396,268	394,315	400,375	362,080	347,300
DAM NON-NYCA	8,104	8,557	10,824	11,856	12,923	12,642	12,439
DAM WHEELS	0	4,767	6,783	7,524	6,607	6,647	8,064
DAM VIRTUAL	34,220	29,164	38,269	42,860	34,820	32,753	31,067
BALANCING NYCA	6,811	5,862	6,256	(1,145)	(812)	(24)	146
BALANCING NON-NYCA	5,580	4,626	8,255	3,029	4,864	1,795	3,008
BALANCING WHEELS	0	(2,660)	(1,255)	(1,357)	(1,141)	(185)	(1,028)
BALANCING VIRTUAL	(34,220)	(29,164)	(38,269)	(42,860)	(34,820)	(32,753)	(31,067)
UFE/LOSSES	8,643	8,909	8,996	9,757	14,767	13,874	13,711
	12	13	14	15	16	17	18
DAM NYCA	390,826	398,667	408,920	422,621	414,125	379,332	365,384
DAM NON-NYCA	16,161	15,407	11,173	11,095	8,305	6,464	5,926
DAM WHEELS	6,464	7,987	8,593	8,267	6,568	269	1,271
DAM VIRTUAL	46,322	31,215	37,126	39,146	36,016	40,583	39,516
BALANCING NYCA	(1,740)	1,730	(6,713)	(9,170)	(4,037)	(5,966)	3,333
BALANCING NON-NYCA	4,102	5,667	5,491	7,936	4,701	5,646	5,727
BALANCING WHEELS	(130)	(2,026)	(1,867)	(2,142)	(664)	(40)	(1,163)
BALANCING VIRTUAL	(46,322)	(31,215)	(37,126)	(39,146)	(36,016)	(40,583)	(39,516)
UFE/LOSSES	13,843	13,883	19,399	20,630	20,923	18,867	18,549
	19	20	21	22	23	24	25
DAM NYCA	407,896	409,125	410,111	407,713	407,171	369,927	357,807
DAM NON-NYCA	7,456	7,385	9,779	10,135	9,722	8,595	11,472
DAM WHEELS	1,509	1,681	2,240	1,230	2,290	2,232	1,024
DAM VIRTUAL	40,647	39,765	32,181	30,420	32,081	43,605	34,319
BALANCING NYCA	(4,148)	(8,723)	(11,849)	(6,336)	(8,268)	1,884	(5,912)
BALANCING NON-NYCA	6,216	8,607	4,735	3,815	3,730	9,874	9,608
BALANCING WHEELS	(828)	(674)	(1,605)	(970)	(1,929)	(1,627)	(49)
BALANCING VIRTUAL	(40,647)	(39,765)	(32,181)	(30,420)	(32,081)	(43,605)	(34,319)
UFE/LOSSES	19,942	21,233	20,737	21,092	20,718	20,772	20,307
	26	27	28	29	30	31	
DAM NYCA	407,368	409,526	419,048	420,054	407,402	372,902	
DAM NON-NYCA	11,609	9,067	8,030	8,978	8,348	19,830	
DAM WHEELS	1,592	1,800	1,081	1,200	1,220	2,222	
DAM VIRTUAL	35,989	34,261	29,448	22,226	33,989	23,340	
BALANCING NYCA	(10,735)	(6,545)	(13,293)	(21,750)	(15,477)	(8,771)	
BALANCING NON-NYCA	6,506	4,929	4,736	2,113	4,567	5,003	
BALANCING WHEELS	(733)	(1,700)	(500)	(950)	(670)	(2,128)	
BALANCING VIRTUAL	(35,989)	(34,261)	(29,448)	(22,226)	(33,989)	(23,340)	
UFE/LOSSES	19,075	20,588	20,230	21,518	21,350	22,203	

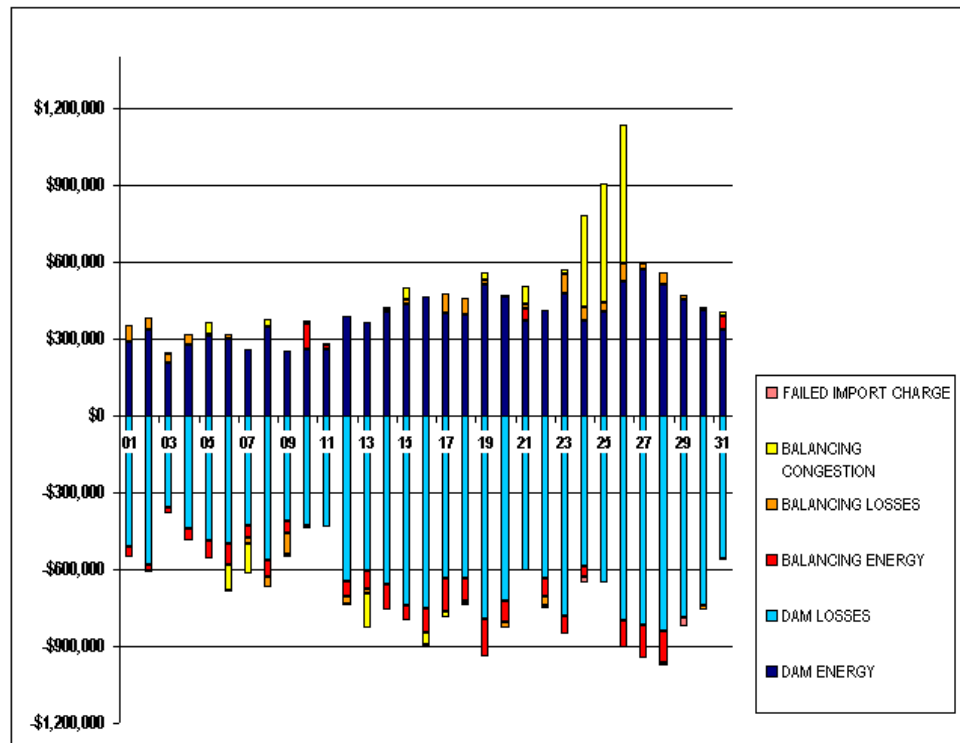


FOR DISCUSSION PURPOSES ONLY

SETTLEMENTS REPORT
October 2009 Close-Out Settlement
July 7, 2010

4-Month Settlement Adjustment – Market Residuals Analysis

	MONDAY	TUESDAY	WEDNESDAY	THURSDAY	FRIDAY	SATURDAY	SUNDAY
				1	2	3	4
DAM ENERGY				\$291,144.57	\$335,243.08	\$207,191.17	\$276,141.09
DAM LOSSES				(\$510,695.88)	(\$579,595.52)	(\$359,638.22)	(\$562,464.25)
BALANCING ENERGY				(\$39,429.42)	(\$26,239.69)	(\$20,686.56)	(\$64,043.35)
BALANCING LOSSES				\$60,048.86	\$49,551.04	\$36,120.13	(\$44,933.73)
BALANCING CONGESTION				(\$3,201.00)	(\$5,483.15)	\$4,381.14	\$31,324.09
FAILED IMPORT CHARGE				\$0.00	(\$6,410.06)	(\$8.78)	\$0.00
	5	6	7	8	9	10	11
DAM ENERGY	\$254,745.87	\$258,680.62	\$260,312.78	\$388,728.05	\$367,478.95	\$408,721.54	\$260,312.78
DAM LOSSES	(\$409,447.61)	(\$430,068.03)	(\$435,581.95)	(\$644,424.54)	(\$604,610.73)	(\$659,917.42)	(\$435,581.95)
BALANCING ENERGY	(\$51,416.41)	\$99,907.12	\$15,677.94	(\$60,536.88)	(\$73,045.10)	(\$99,306.94)	\$15,677.94
BALANCING LOSSES	(\$78,250.87)	\$9,297.77	\$8,316.89	(\$32,676.03)	(\$17,582.11)	\$10,559.19	\$8,316.89
BALANCING CONGESTION	(\$13,453.49)	(\$10,076.32)	(\$412.12)	(\$2,407.82)	(\$134,493.14)	\$1,490.11	(\$412.12)
FAILED IMPORT CHARGE	\$0.00	\$0.00	(\$407.03)	(\$2,083.72)	(\$120.31)	\$0.00	(\$407.03)
	12	13	14	15	16	17	18
DAM ENERGY	\$388,728.05	\$367,478.95	\$408,721.54	\$436,149.49	\$467,495.57	\$399,908.38	\$396,656.83
DAM LOSSES	(\$644,424.54)	(\$604,610.73)	(\$659,917.42)	(\$742,851.49)	(\$751,209.03)	(\$634,467.85)	(\$632,418.18)
BALANCING ENERGY	(\$60,536.88)	(\$73,045.10)	(\$99,306.94)	(\$57,230.81)	(\$84,261.61)	(\$129,661.95)	(\$88,556.52)
BALANCING LOSSES	(\$32,676.03)	(\$17,582.11)	\$10,559.19	\$16,074.48	(\$1,414.24)	\$79,177.27	\$63,265.80
BALANCING CONGESTION	(\$2,407.82)	(\$134,493.14)	\$1,490.11	\$46,982.27	(\$48,230.63)	(\$22,424.43)	(\$17,030.84)
FAILED IMPORT CHARGE	(\$2,083.72)	(\$120.31)	\$0.00	\$0.00	(\$2,965.16)	(\$15.52)	(\$1,072.06)
	19	20	21	22	23	24	25
DAM ENERGY	\$513,315.07	\$464,425.10	\$372,723.03	\$408,965.08	\$476,765.02	\$367,773.56	\$403,698.26
DAM LOSSES	(\$795,056.00)	(\$720,863.74)	(\$603,532.44)	(\$636,634.86)	(\$785,130.25)	(\$586,566.82)	(\$651,516.75)
BALANCING ENERGY	(\$146,138.98)	(\$87,086.18)	\$46,759.46	(\$71,790.39)	(\$65,969.18)	(\$45,139.08)	(\$118.62)
BALANCING LOSSES	\$16,931.16	(\$19,455.28)	\$16,708.14	(\$29,867.01)	\$78,520.79	\$54,116.82	\$36,966.44
BALANCING CONGESTION	\$31,086.81	\$5,331.53	\$71,417.35	(\$10,881.79)	\$13,594.47	\$359,315.54	\$465,391.16
FAILED IMPORT CHARGE	\$0.00	(\$8.90)	\$0.00	(\$2,704.14)	(\$1,537.60)	(\$18,897.58)	(\$1,819.17)
	26	27	28	29	30	31	
DAM ENERGY	\$523,674.21	\$568,018.44	\$511,517.62	\$450,703.62	\$414,333.35	\$333,500.46	
DAM LOSSES	(\$801,639.18)	(\$819,127.58)	(\$841,738.51)	(\$787,548.18)	(\$742,807.49)	(\$558,328.06)	
BALANCING ENERGY	(\$105,961.92)	(\$130,529.26)	(\$124,395.98)	\$3,430.62	\$6,351.44	\$53,237.69	
BALANCING LOSSES	\$68,482.78	\$27,235.64	\$47,397.44	\$14,231.58	(\$17,154.59)	(\$6,482.61)	
BALANCING CONGESTION	\$544,990.76	\$6,858.18	(\$8,674.21)	\$3,578.42	(\$1,536.83)	\$20,481.23	
FAILED IMPORT CHARGE	(\$517.68)	\$0.00	\$0.00	(\$33,256.94)	\$0.00	\$0.00	

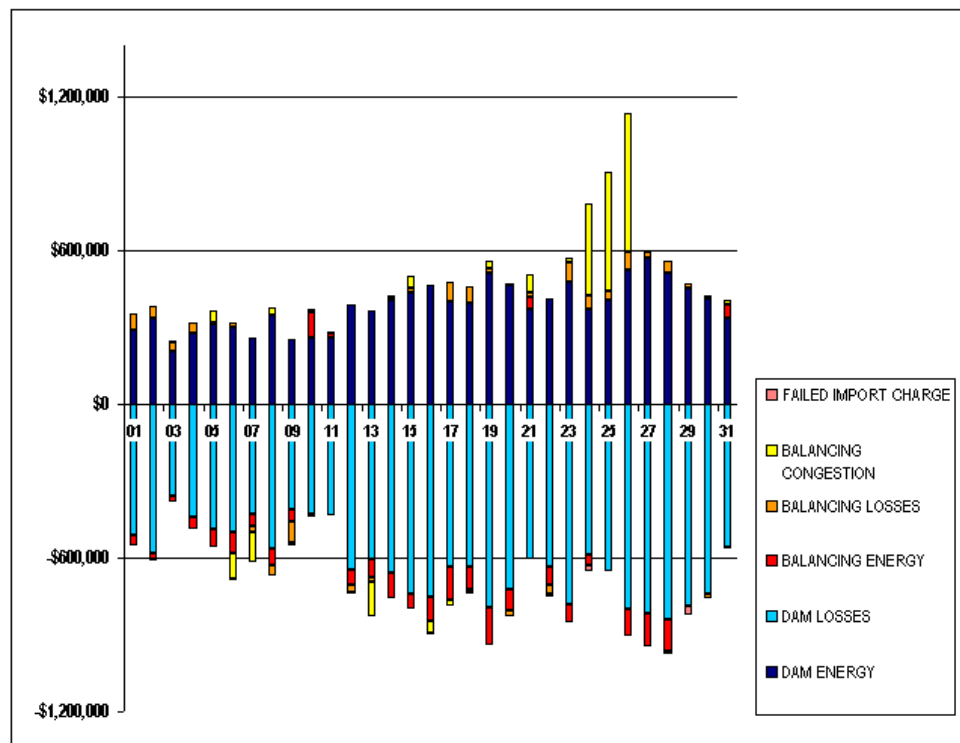


FOR DISCUSSION PURPOSES ONLY

SETTLEMENTS REPORT
October 2009 Close-Out Settlement
July 7, 2010

Close-Out Settlement – Market Residuals Analysis

	MONDAY	TUESDAY	WEDNESDAY	THURSDAY	FRIDAY	SATURDAY	SUNDAY
				1	2	3	4
DAM ENERGY				\$291,144.57	\$335,243.08	\$207,191.17	\$276,141.09
DAM LOSSES				(\$510,895.88)	(\$579,595.52)	(\$359,638.22)	(\$443,341.73)
BALANCING ENERGY				(\$39,429.42)	(\$26,239.69)	(\$20,686.56)	(\$43,461.36)
BALANCING LOSSES				\$60,048.86	\$49,551.04	\$36,120.13	\$41,088.64
BALANCING CONGESTION				(\$3,201.00)	(\$5,483.15)	\$4,381.14	(\$496.73)
FAILED IMPORT CHARGE				(\$370.35)	(\$2,089.12)	\$0.00	(\$56.49)
	5	6	7	8	9	10	11
DAM ENERGY	\$312,336.79	\$298,790.06	\$261,509.22	\$347,286.70	\$254,745.86	\$258,680.62	\$260,312.78
DAM LOSSES	(\$490,858.45)	(\$498,928.97)	(\$427,361.62)	(\$562,464.25)	(\$409,447.61)	(\$430,068.03)	(\$435,581.94)
BALANCING ENERGY	(\$67,699.08)	(\$84,353.62)	(\$48,577.37)	(\$64,043.35)	(\$51,416.41)	\$99,907.12	\$15,677.94
BALANCING LOSSES	\$4,515.56	\$17,977.89	(\$23,023.84)	(\$44,933.73)	(\$78,250.86)	\$9,297.77	\$8,316.89
BALANCING CONGESTION	\$45,666.96	(\$97,353.82)	(\$117,763.46)	\$31,324.09	(\$13,453.49)	(\$10,076.32)	(\$412.12)
FAILED IMPORT CHARGE	\$0.00	(\$6,410.07)	(\$8.78)	\$0.00	\$0.00	\$0.00	(\$407.01)
	12	13	14	15	16	17	18
DAM ENERGY	\$388,728.04	\$367,478.95	\$408,721.54	\$436,149.49	\$467,495.58	\$399,908.38	\$396,656.83
DAM LOSSES	(\$644,424.53)	(\$604,610.73)	(\$659,917.43)	(\$742,851.49)	(\$751,209.03)	(\$634,467.86)	(\$632,418.18)
BALANCING ENERGY	(\$60,536.88)	(\$73,045.10)	(\$99,306.94)	(\$57,230.81)	(\$84,261.61)	(\$129,661.96)	(\$88,556.52)
BALANCING LOSSES	(\$32,676.03)	(\$17,582.11)	\$10,559.19	\$16,074.48	(\$1,414.24)	\$79,177.27	\$63,265.80
BALANCING CONGESTION	(\$2,407.82)	(\$134,493.14)	\$1,490.11	\$46,982.27	(\$48,230.63)	(\$22,424.43)	(\$17,030.84)
FAILED IMPORT CHARGE	(\$2,083.75)	(\$120.30)	\$0.00	\$0.00	(\$2,965.10)	(\$15.51)	(\$1,072.08)
	19	20	21	22	23	24	25
DAM ENERGY	\$513,315.07	\$464,425.10	\$372,723.03	\$408,965.08	\$476,765.02	\$367,773.56	\$403,698.26
DAM LOSSES	(\$795,056.00)	(\$720,863.74)	(\$603,532.44)	(\$636,834.86)	(\$785,130.25)	(\$586,566.82)	(\$651,516.75)
BALANCING ENERGY	(\$146,138.98)	(\$87,086.17)	\$46,759.46	(\$71,790.39)	(\$65,969.18)	(\$45,139.08)	(\$118.62)
BALANCING LOSSES	\$16,931.16	(\$19,455.28)	\$16,708.14	(\$29,867.01)	\$78,520.79	\$54,116.82	\$36,966.44
BALANCING CONGESTION	\$31,086.81	\$5,331.53	\$71,417.35	(\$10,881.79)	\$13,594.47	\$359,315.54	\$465,391.16
FAILED IMPORT CHARGE	\$0.00	(\$8.91)	\$0.00	(\$2,704.15)	(\$1,537.67)	(\$18,897.58)	(\$1,819.18)
	26	27	28	29	30	31	
DAM ENERGY	\$523,674.21	\$568,018.44	\$511,517.62	\$450,703.62	\$414,333.35	\$333,500.47	
DAM LOSSES	(\$801,639.18)	(\$819,127.57)	(\$841,738.51)	(\$787,548.18)	(\$742,807.49)	(\$558,328.07)	
BALANCING ENERGY	(\$105,961.92)	(\$130,529.26)	(\$124,395.97)	\$3,430.62	\$6,351.44	\$53,237.69	
BALANCING LOSSES	\$68,482.78	\$27,235.64	\$47,397.44	\$14,231.58	(\$17,154.59)	\$6,482.61)	
BALANCING CONGESTION	\$544,990.75	\$6,858.18	(\$8,674.21)	\$3,578.42	(\$1,536.83)	\$20,481.23	
FAILED IMPORT CHARGE	(\$517.69)	\$0.00	\$0.00	(\$33,256.87)	\$0.00	\$0.00	

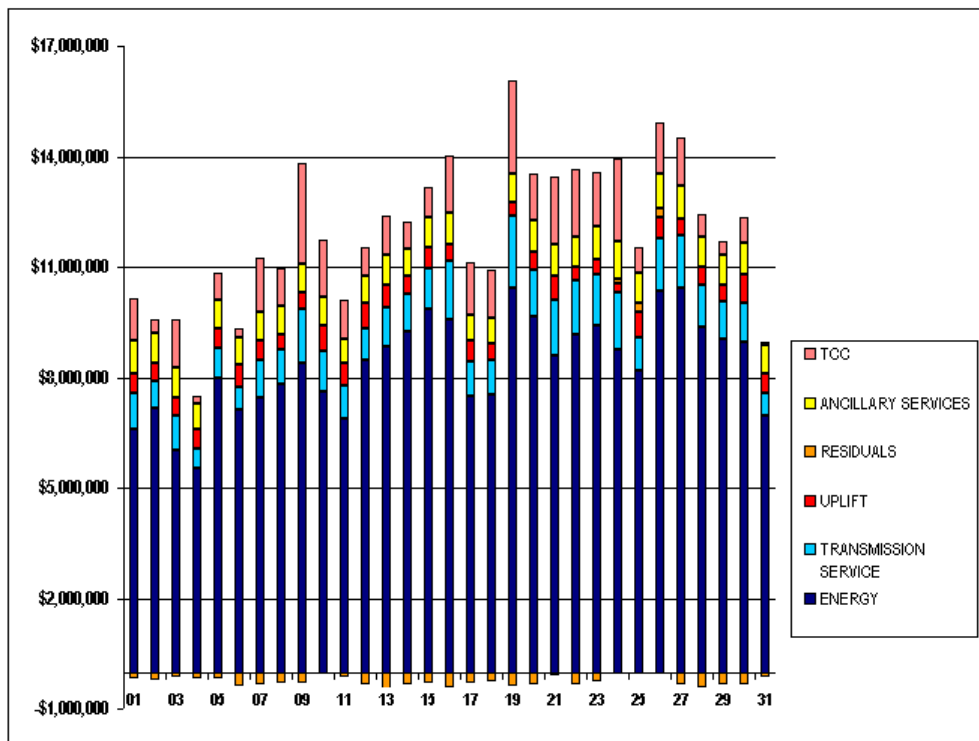


FOR DISCUSSION PURPOSES ONLY

SETTLEMENTS REPORT
October 2009 Close-Out Settlement
July 7, 2010

4-Month Settlement Adjustment – Market Costs Analysis

	MONDAY	TUESDAY	WEDNESDAY	THURSDAY	FRIDAY	SATURDAY	SUNDAY
ENERGY				1	2	3	4
TRANSMISSION SERVICE				\$6,582,030.82	\$7,112,775.36	\$7,466,800.15	\$5,511,025.50
UPLIFT				\$822,968.21	\$624,451.37	\$1,009,569.54	\$806,981.61
RESIDUALS				\$549,048.17	\$614,900.96	\$613,116.05	\$444,240.33
ANCILLARY SERVICES				(\$196,038.22)	(\$370,278.53)	(\$355,225.85)	(\$292,830.54)
TCC				\$767,181.16	\$712,960.21	\$774,236.90	\$751,010.01
				\$733,033.69	\$241,574.06	\$1,497,598.90	\$1,008,794.18
	5	6	7	8	9	10	11
ENERGY	\$8,406,565.93	\$7,605,970.27	\$6,861,149.51	\$8,489,578.94	\$8,829,112.91	\$9,254,935.18	\$6,861,149.51
TRANSMISSION SERVICE	\$1,461,402.56	\$1,116,821.07	\$894,041.48	\$850,355.14	\$1,087,299.23	\$998,518.20	\$894,041.48
UPLIFT	\$419,818.78	\$683,823.39	\$635,982.27	\$667,616.99	\$605,687.86	\$485,316.19	\$635,982.27
RESIDUALS	(\$297,822.51)	(\$72,258.84)	(\$152,093.49)	(\$353,400.94)	(\$462,372.44)	(\$338,453.52)	(\$152,093.49)
ANCILLARY SERVICES	\$787,539.35	\$772,150.12	\$637,050.80	\$766,256.58	\$785,962.60	\$765,619.58	\$637,050.80
TCC	\$2,722,280.05	\$1,537,108.11	\$1,064,477.98	\$753,163.93	\$1,092,431.61	\$725,372.78	\$1,064,477.98
	12	13	14	15	16	17	18
ENERGY	\$8,489,578.94	\$8,829,112.91	\$9,254,935.18	\$9,849,284.16	\$9,577,664.58	\$7,476,503.75	\$7,541,646.17
TRANSMISSION SERVICE	\$850,355.14	\$1,087,299.23	\$998,518.20	\$1,109,412.48	\$1,586,186.96	\$955,619.86	\$937,398.70
UPLIFT	\$667,616.99	\$605,687.86	\$485,316.19	\$569,252.80	\$457,970.12	\$565,962.69	\$441,471.36
RESIDUALS	(\$353,400.94)	(\$462,372.44)	(\$338,453.52)	(\$300,876.06)	(\$430,585.10)	(\$307,484.10)	(\$279,154.97)
ANCILLARY SERVICES	\$766,256.58	\$785,962.60	\$765,619.58	\$828,704.61	\$842,957.94	\$704,467.19	\$672,751.45
TCC	\$753,163.93	\$1,092,431.61	\$725,372.78	\$794,850.24	\$1,571,357.90	\$1,411,909.49	\$1,305,848.13
	19	20	21	22	23	24	25
ENERGY	\$10,419,536.62	\$9,664,559.25	\$8,598,691.60	\$9,179,328.66	\$9,415,676.93	\$8,739,471.78	\$8,181,261.67
TRANSMISSION SERVICE	\$1,970,959.90	\$1,272,237.69	\$1,498,520.86	\$1,459,271.64	\$1,391,912.85	\$1,580,239.12	\$891,713.71
UPLIFT	\$352,249.88	\$458,742.52	\$668,292.28	\$350,174.20	\$408,007.63	\$227,045.66	\$713,927.57
RESIDUALS	(\$379,861.94)	(\$357,657.47)	(\$95,924.46)	(\$342,913.11)	(\$283,756.75)	\$130,602.44	\$252,601.32
ANCILLARY SERVICES	\$801,240.49	\$860,675.16	\$860,091.27	\$842,945.08	\$882,144.80	\$1,034,929.20	\$793,544.68
TCC	\$2,528,688.20	\$1,272,146.42	\$1,816,299.10	\$1,820,413.33	\$1,492,558.56	\$2,241,326.75	\$714,898.46
	26	27	28	29	30	31	
ENERGY	\$10,338,714.90	\$10,410,847.70	\$9,358,327.49	\$9,033,568.16	\$8,957,939.66	\$6,946,399.16	
TRANSMISSION SERVICE	\$1,441,420.91	\$1,441,054.74	\$1,161,621.35	\$1,033,173.33	\$1,059,534.89	\$607,737.60	
UPLIFT	\$583,741.18	\$466,213.41	\$467,752.41	\$446,386.35	\$771,034.46	\$565,363.10	
RESIDUALS	\$229,028.97	(\$347,544.58)	(\$415,893.64)	(\$348,860.88)	(\$340,814.12)	(\$157,601.29)	
ANCILLARY SERVICES	\$841,597.37	\$891,017.14	\$846,105.73	\$825,070.72	\$868,599.45	\$773,853.77	
TCC	\$1,382,967.18	\$1,313,978.20	\$594,902.30	\$371,682.07	\$686,353.42	\$70,270.32	



FOR DISCUSSION PURPOSES ONLY

SETTLEMENTS REPORT
October 2009 Close-Out Settlement
July 7, 2010

Close-Out Settlement – Market Costs Analysis

	MONDAY	TUESDAY	WEDNESDAY	THURSDAY	FRIDAY	SATURDAY	SUNDAY
				1	2	3	4
ENERGY				\$6,582,030.87	\$7,166,518.12	\$6,027,687.82	\$5,511,025.49
TRANSMISSION SERVICE				\$888,912.77	\$741,139.39	\$945,051.78	\$550,408.06
UPLIFT				\$540,434.68	\$488,758.54	\$462,190.56	\$528,397.11
RESIDUALS				(\$202,503.22)	(\$228,613.36)	(\$132,632.34)	(\$170,126.58)
ANCILLARY SERVICES				\$877,670.84	\$795,319.33	\$839,582.99	\$686,639.58
TCC				\$1,143,338.78	\$390,189.93	\$1,311,187.42	\$204,042.04
	5	6	7	8	9	10	11
ENERGY	\$7,971,096.06	\$7,112,775.22	\$7,466,800.16	\$7,832,048.97	\$8,406,566.02	\$7,605,970.49	\$6,861,149.57
TRANSMISSION SERVICE	\$822,968.21	\$624,451.45	\$1,009,569.62	\$806,981.61	\$1,461,402.67	\$1,116,821.06	\$894,041.42
UPLIFT	\$565,143.94	\$614,891.87	\$513,116.05	\$444,222.06	\$419,727.23	\$683,802.13	\$635,982.27
RESIDUALS	(\$196,038.22)	(\$370,278.53)	(\$355,225.85)	(\$292,830.54)	(\$297,822.51)	(\$72,258.84)	(\$152,093.46)
ANCILLARY SERVICES	\$767,181.16	\$712,960.33	\$774,237.02	\$751,010.01	\$787,539.53	\$772,150.10	\$637,050.69
TCC	\$733,033.69	\$241,574.06	\$1,497,598.90	\$1,008,794.18	\$2,722,280.05	\$1,537,108.11	\$1,064,477.98
	12	13	14	15	16	17	18
ENERGY	\$8,489,578.77	\$8,829,112.82	\$9,254,934.96	\$9,849,284.25	\$9,577,664.55	\$7,476,503.70	\$7,541,646.29
TRANSMISSION SERVICE	\$850,355.05	\$1,087,299.23	\$898,518.33	\$1,109,412.48	\$1,586,186.93	\$955,619.77	\$937,398.70
UPLIFT	\$667,264.81	\$605,685.62	\$485,313.33	\$569,228.08	\$457,716.92	\$558,768.05	\$441,340.65
RESIDUALS	(\$353,400.97)	(\$462,372.43)	(\$338,453.53)	(\$300,676.06)	(\$430,585.03)	(\$307,484.11)	(\$279,154.99)
ANCILLARY SERVICES	\$766,256.44	\$785,962.59	\$765,619.77	\$828,704.61	\$842,957.88	\$704,467.05	\$672,751.45
TCC	\$753,163.93	\$1,092,431.61	\$725,372.78	\$794,850.24	\$1,571,357.90	\$1,411,909.49	\$1,305,848.13
	19	20	21	22	23	24	25
ENERGY	\$10,419,536.59	\$8,664,559.11	\$8,598,691.49	\$9,179,328.82	\$9,415,676.85	\$8,739,471.76	\$8,181,261.62
TRANSMISSION SERVICE	\$1,970,959.89	\$1,272,237.66	\$1,498,520.86	\$1,459,271.64	\$1,391,912.85	\$1,580,239.12	\$891,713.62
UPLIFT	\$351,225.75	\$456,677.50	\$659,099.84	\$350,174.19	\$408,007.63	\$219,143.69	\$724,019.66
RESIDUALS	(\$379,861.94)	(\$357,657.47)	(\$95,924.46)	(\$342,913.12)	(\$283,756.82)	\$130,602.44	\$252,601.31
ANCILLARY SERVICES	\$801,240.48	\$860,675.12	\$860,031.27	\$842,945.08	\$882,144.80	\$1,034,929.20	\$793,544.54
TCC	\$2,528,688.20	\$1,272,146.42	\$1,816,299.10	\$1,820,413.33	\$1,492,558.56	\$2,241,326.75	\$714,898.46
	26	27	28	29	30	31	
ENERGY	\$10,338,714.93	\$10,410,847.49	\$9,358,327.37	\$9,033,568.01	\$8,957,939.64	\$6,946,399.16	
TRANSMISSION SERVICE	\$1,441,420.87	\$1,441,054.66	\$1,161,621.27	\$1,033,173.41	\$1,059,534.73	\$607,737.48	
UPLIFT	\$570,814.82	\$465,619.35	\$467,752.41	\$445,655.06	\$770,705.10	\$565,363.10	
RESIDUALS	\$229,028.95	(\$347,544.57)	(\$415,893.63)	(\$348,860.81)	(\$340,814.12)	(\$157,601.29)	
ANCILLARY SERVICES	\$941,537.31	\$891,017.01	\$846,105.61	\$825,070.84	\$868,599.20	\$773,853.58	
TCC	\$1,382,967.18	\$1,313,978.20	\$594,902.30	\$371,682.07	\$686,353.42	\$70,270.32	

