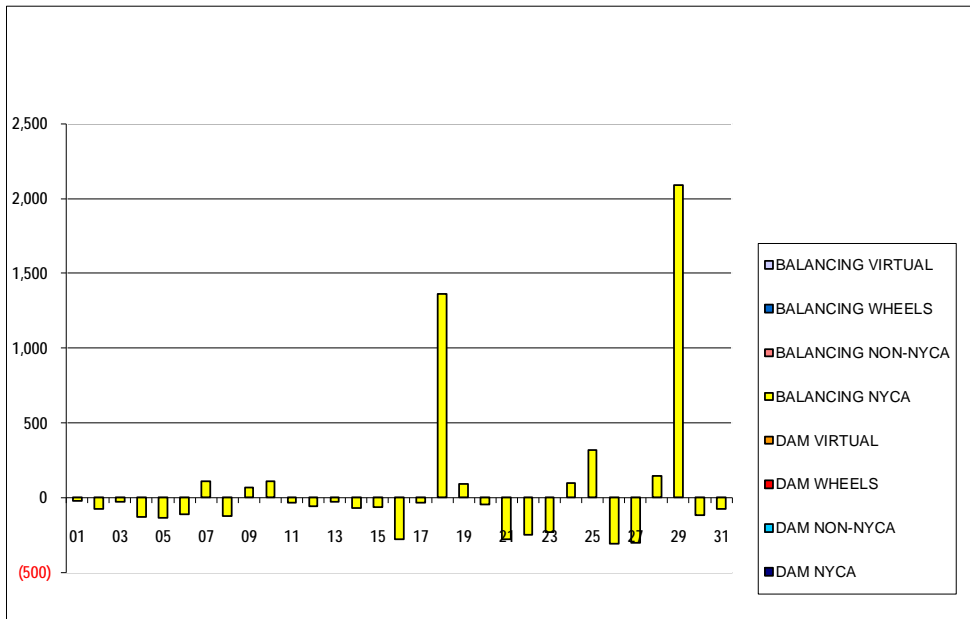


SETTLEMENTS REPORT  
December 2020 Settlement Adjustment  
May 7, 2021

Settlement Adjustment – Market Supply Delta Analysis

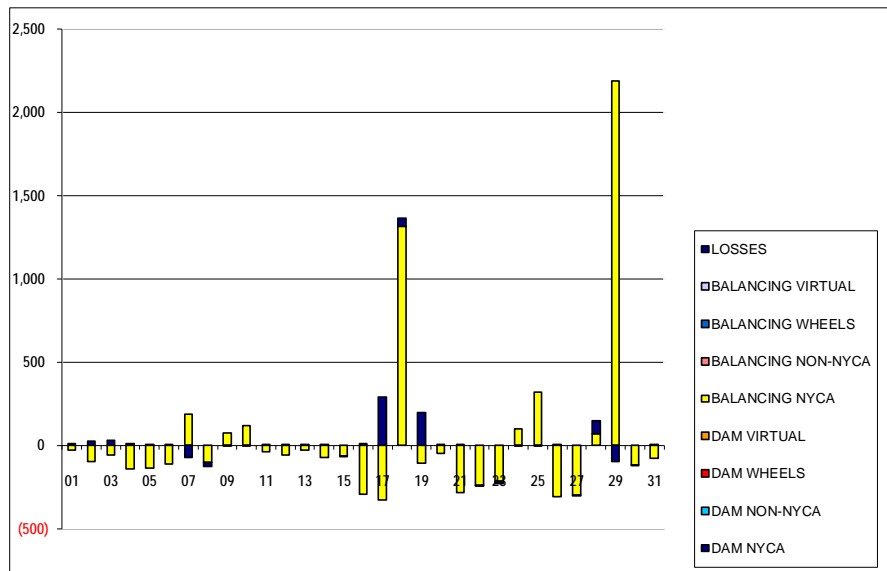
	MONDAY	TUESDAY	WEDNESDAY	THURSDAY	FRIDAY	SATURDAY	SUNDAY
		1	2	3	4	5	6
DAM NYCA		0	0	0	0	0	0
DAM NON-NYCA		0	0	0	0	0	0
DAM WHEELS		0	0	0	0	0	0
DAM VIRTUAL		0	0	0	0	0	0
BALANCING NYCA		(20)	(75)	(29)	(132)	(134)	(111)
BALANCING NON-NYCA		0	0	0	0	0	0
BALANCING WHEELS		0	0	0	0	0	0
BALANCING VIRTUAL		0	0	0	0	0	0
	7	8	9	10	11	12	13
DAM NYCA	0	0	0	0	0	0	0
DAM NON-NYCA	0	0	0	0	0	0	0
DAM WHEELS	0	0	0	0	0	0	0
DAM VIRTUAL	0	0	0	0	0	0	0
BALANCING NYCA	110	(126)	71	110	(36)	(56)	(27)
BALANCING NON-NYCA	0	0	0	0	0	0	0
BALANCING WHEELS	0	0	0	0	0	0	0
BALANCING VIRTUAL	0	0	0	0	0	0	0
	14	15	16	17	18	19	20
DAM NYCA	0	0	0	0	0	0	0
DAM NON-NYCA	0	0	0	0	0	0	0
DAM WHEELS	0	0	0	0	0	0	0
DAM VIRTUAL	0	0	0	0	0	0	0
BALANCING NYCA	(70)	(63)	(281)	(34)	1,363	89	(46)
BALANCING NON-NYCA	0	0	0	0	0	0	0
BALANCING WHEELS	0	0	0	0	0	0	0
BALANCING VIRTUAL	0	0	0	0	0	0	0
	21	22	23	24	25	26	27
DAM NYCA	0	0	0	0	0	0	0
DAM NON-NYCA	0	0	0	0	0	0	0
DAM WHEELS	0	0	0	0	0	0	0
DAM VIRTUAL	0	0	0	0	0	0	0
BALANCING NYCA	(281)	(246)	(230)	96	320	(305)	(299)
BALANCING NON-NYCA	0	0	0	0	0	0	0
BALANCING WHEELS	0	0	0	0	0	0	0
BALANCING VIRTUAL	0	0	0	0	0	0	0
	28	29	30	31			
DAM NYCA	0	0	0	0			
DAM NON-NYCA	0	0	0	0			
DAM WHEELS	0	0	0	0			
DAM VIRTUAL	0	0	0	0			
BALANCING NYCA	148	2,090	(116)	(74)			
BALANCING NON-NYCA	0	0	0	0			
BALANCING WHEELS	0	0	0	0			
BALANCING VIRTUAL	0	0	0	0			



SETTLEMENTS REPORT  
December 2020 Settlement Adjustment  
May 7, 2021

Settlement Adjustment – Market Withdrawals Delta Analysis

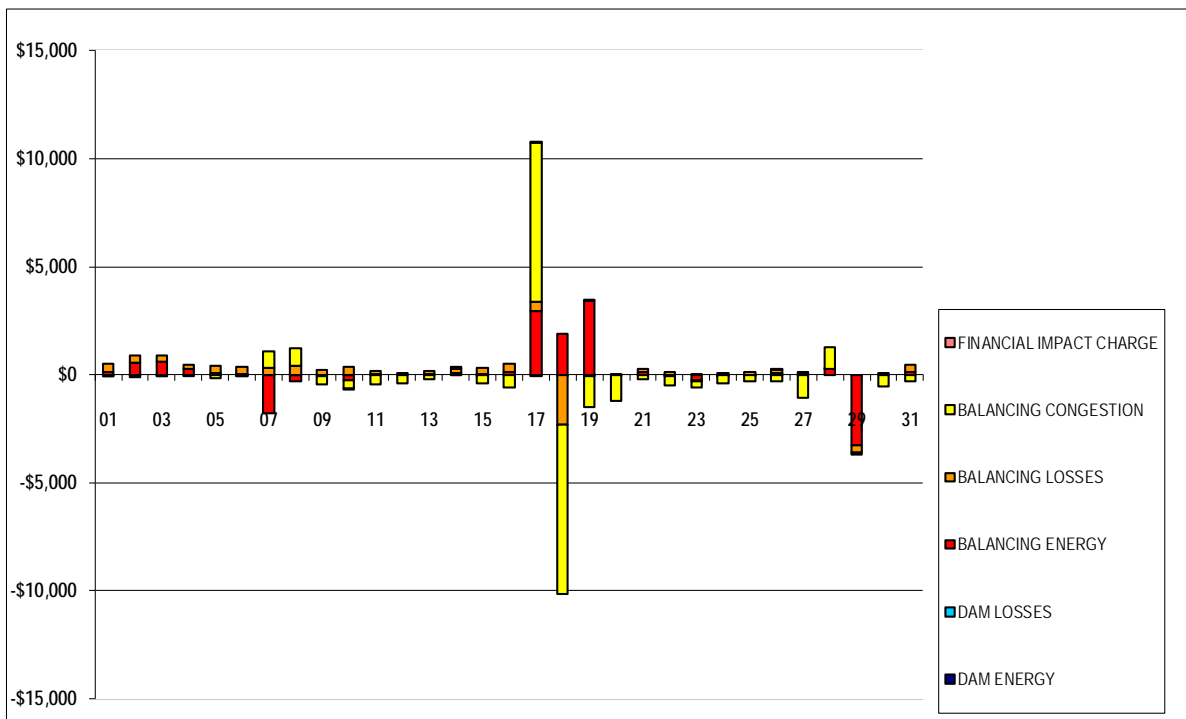
	MONDAY	TUESDAY	WEDNESDAY	THURSDAY	FRIDAY	SATURDAY	SUNDAY
		1	2	3	4	5	6
DAM NYCA		0	0	0	0	0	0
DAM NON-NYCA		0	0	0	0	0	0
DAM WHEELS		0	0	0	0	0	0
DAM VIRTUAL		0	0	0	0	0	0
BALANCING NYCA		(29)	(99)	(58)	(143)	(139)	(113)
BALANCING NON-NYCA		0	0	0	0	0	0
BALANCING WHEELS		0	0	0	0	0	0
BALANCING VIRTUAL		0	0	0	0	0	0
UFE/LOSSES		9	24	30	11	5	2
	7	8	9	10	11	12	13
DAM NYCA	0	0	0	0	0	0	0
DAM NON-NYCA	0	0	0	0	0	0	0
DAM WHEELS	0	0	0	0	0	0	0
DAM VIRTUAL	0	0	0	0	0	0	0
BALANCING NYCA	186	(104)	76	116	(37)	(58)	(28)
BALANCING NON-NYCA	0	0	0	0	0	0	0
BALANCING WHEELS	0	0	0	0	0	0	0
BALANCING VIRTUAL	0	0	0	0	0	0	0
UFE/LOSSES	(75)	(21)	(5)	(6)	1	2	1
	14	15	16	17	18	19	20
DAM NYCA	0	0	0	0	0	0	0
DAM NON-NYCA	0	0	0	0	0	0	0
DAM WHEELS	0	0	0	0	0	0	0
DAM VIRTUAL	0	0	0	0	0	0	0
BALANCING NYCA	(75)	(62)	(292)	(326)	1,313	(109)	(47)
BALANCING NON-NYCA	0	0	0	0	0	0	0
BALANCING WHEELS	0	0	0	0	0	0	0
BALANCING VIRTUAL	0	0	0	0	0	0	0
UFE/LOSSES	5	(1)	11	292	50	199	1
	21	22	23	24	25	26	27
DAM NYCA	0	0	0	0	0	0	0
DAM NON-NYCA	0	0	0	0	0	0	0
DAM WHEELS	0	0	0	0	0	0	0
DAM VIRTUAL	0	0	0	0	0	0	0
BALANCING NYCA	(284)	(240)	(217)	97	321	(307)	(295)
BALANCING NON-NYCA	0	0	0	0	0	0	0
BALANCING WHEELS	0	0	0	0	0	0	0
BALANCING VIRTUAL	0	0	0	0	0	0	0
UFE/LOSSES	3	(6)	(13)	(1)	(0)	2	(1)
	28	29	30	31			
DAM NYCA	0	0	0	0			
DAM NON-NYCA	0	0	0	0			
DAM WHEELS	0	0	0	0			
DAM VIRTUAL	0	0	0	0			
BALANCING NYCA	68	2,189	(115)	(79)			
BALANCING NON-NYCA	0	0	0	0			
BALANCING WHEELS	0	0	0	0			
BALANCING VIRTUAL	0	0	0	0			
UFE/LOSSES	80	(98)	(1)	5			



SETTLEMENTS REPORT  
December 2020 Settlement Adjustment  
May 7, 2021

Settlement Adjustment – Market Residuals Delta Analysis

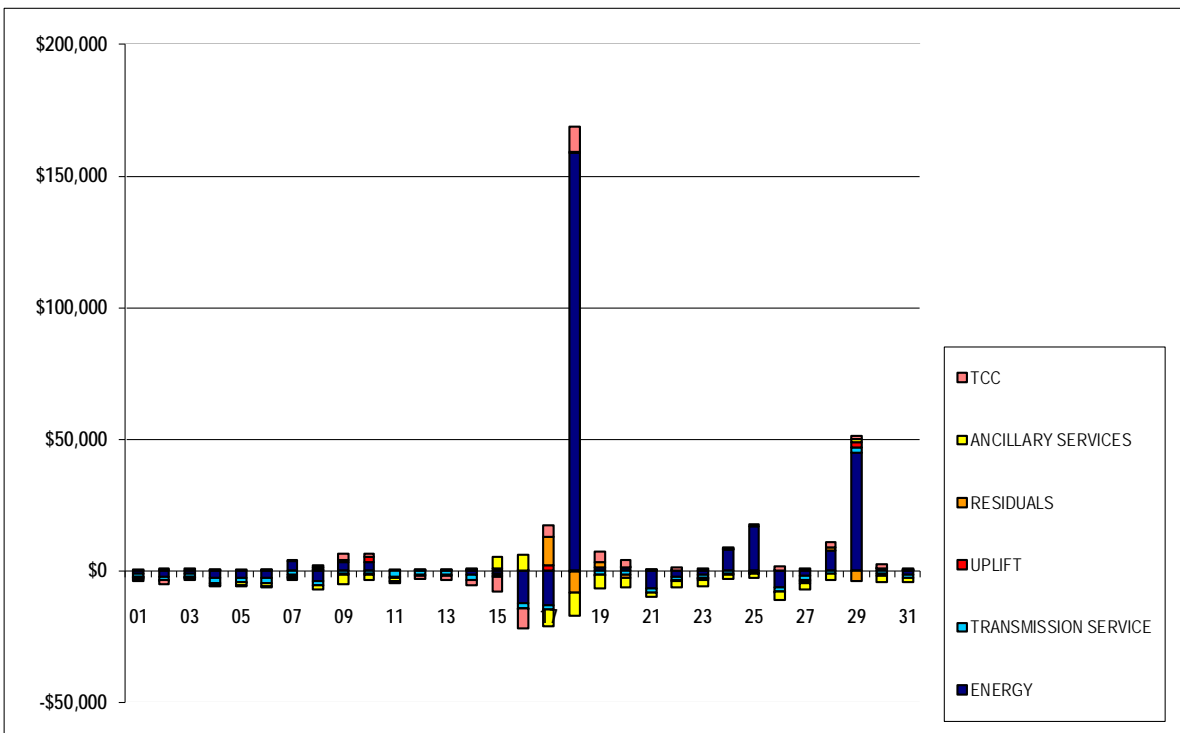
	MONDAY	TUESDAY	WEDNESDAY	THURSDAY	FRIDAY	SATURDAY	SUNDAY
		1	2	3	4	5	6
DAM ENERGY		(\$0.01)	(\$0.01)	(\$0.01)	\$0.00	\$0.01	(\$0.01)
DAM LOSSES		(\$0.01)	\$0.00	\$0.00	\$0.00	\$0.00	\$0.00
BALANCING ENERGY		\$121.58	\$562.39	\$622.11	\$241.75	\$83.37	\$38.46
BALANCING LOSSES		\$369.67	\$340.79	\$282.10	\$203.24	\$321.51	\$335.40
BALANCING CONGESTION		(\$2.10)	(\$111.56)	(\$22.39)	(\$47.38)	(\$167.66)	(\$31.54)
FINANCIAL IMPACT CHARGE		\$0.00	\$0.00	\$0.00	\$0.00	\$0.00	\$0.00
	7	8	9	10	11	12	13
DAM ENERGY	\$0.00	\$0.01	\$0.00	\$0.00	\$0.00	\$0.00	\$0.00
DAM LOSSES	\$0.01	\$0.00	\$0.00	\$0.00	\$0.01	\$0.00	\$0.00
BALANCING ENERGY	(\$1,771.22)	(\$304.41)	(\$67.48)	(\$276.79)	\$7.37	\$22.10	\$48.27
BALANCING LOSSES	\$297.78	\$426.93	\$216.62	\$372.91	\$159.97	\$33.33	\$111.62
BALANCING CONGESTION	\$799.99	\$771.62	(\$381.38)	(\$386.12)	(\$442.84)	(\$386.90)	(\$234.09)
FINANCIAL IMPACT CHARGE	\$0.00	\$0.00	\$0.00	(\$0.11)	\$0.00	\$0.00	\$0.00
	14	15	16	17	18	19	20
DAM ENERGY	\$0.01	(\$0.01)	\$0.00	(\$0.01)	(\$0.01)	\$0.00	\$0.00
DAM LOSSES	\$0.00	\$0.01	\$0.00	\$0.00	\$0.00	(\$0.01)	\$0.00
BALANCING ENERGY	\$90.32	\$45.67	\$116.71	\$2,936.81	\$1,868.40	\$3,421.67	\$27.61
BALANCING LOSSES	\$186.68	\$260.11	\$364.46	\$457.49	(\$2,314.86)	(\$73.91)	(\$2.57)
BALANCING CONGESTION	\$106.77	(\$404.80)	(\$579.82)	\$7,332.47	(\$7,830.13)	(\$1,425.97)	(\$1,194.67)
FINANCIAL IMPACT CHARGE	\$0.00	\$0.00	\$0.00	\$0.13	\$0.00	\$0.05	\$0.00
	21	22	23	24	25	26	27
DAM ENERGY	\$0.01	(\$0.01)	\$0.01	(\$0.01)	\$0.01	\$0.00	\$0.00
DAM LOSSES	\$0.00	\$0.01	\$0.00	\$0.00	\$0.00	\$0.01	\$0.01
BALANCING ENERGY	\$104.56	(\$92.99)	(\$253.73)	(\$25.43)	(\$22.62)	\$56.52	\$47.50
BALANCING LOSSES	\$141.43	\$131.51	(\$52.02)	\$84.93	\$119.01	\$173.57	\$90.84
BALANCING CONGESTION	(\$205.30)	(\$415.51)	(\$289.68)	(\$388.50)	(\$291.05)	(\$311.51)	(\$1,079.50)
FINANCIAL IMPACT CHARGE	\$0.00	\$0.00	\$0.00	\$0.00	\$0.00	\$0.16	\$0.00
	28	29	30	31			
DAM ENERGY	\$0.00	\$0.00	\$0.00	\$0.00			
DAM LOSSES	\$0.00	(\$0.01)	\$0.00	\$0.00			
BALANCING ENERGY	\$249.51	(\$3,290.80)	\$4.10	\$127.16			
BALANCING LOSSES	\$31.24	(\$306.84)	\$91.40	\$320.32			
BALANCING CONGESTION	\$997.98	(\$110.74)	(\$552.07)	(\$291.72)			
FINANCIAL IMPACT CHARGE	\$0.00	\$0.00	\$0.00	\$0.00			



SETTLEMENTS REPORT  
December 2020 Settlement Adjustment  
May 7, 2021

Settlement Adjustment – Market Costs Delta Analysis

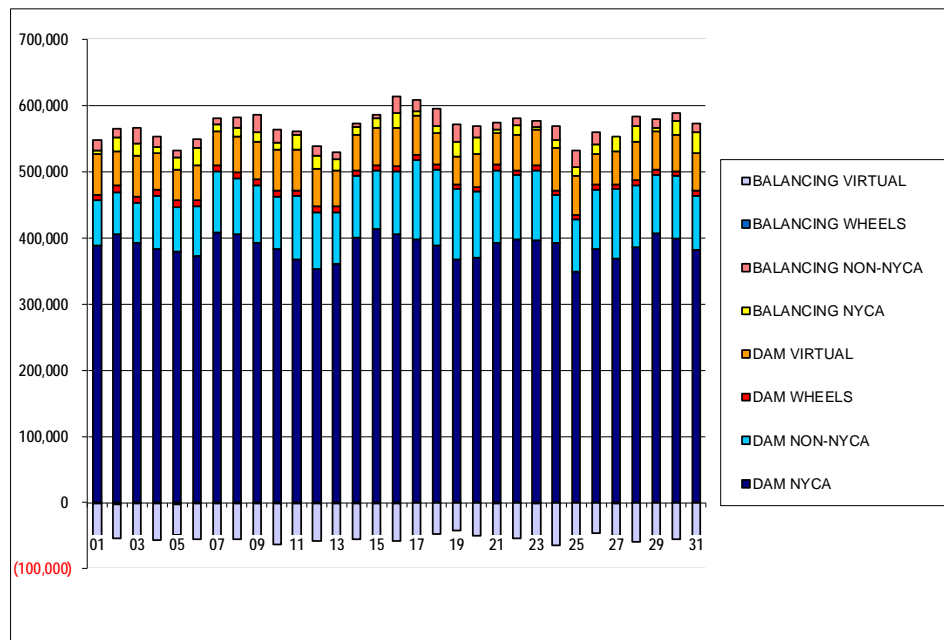
	MONDAY	TUESDAY	WEDNESDAY	THURSDAY	FRIDAY	SATURDAY	SUNDAY
		1	2	3	4	5	6
ENERGY		(\$850.06)	(\$2,262.84)	(\$946.63)	(\$2,655.42)	(\$2,667.68)	(\$2,551.66)
TRANSMISSION SERVICE		(\$1,490.96)	(\$1,181.80)	(\$1,330.49)	(\$1,761.34)	(\$1,640.23)	(\$2,047.82)
UPLIFT		(\$7.92)	(\$13.35)	(\$3.67)	\$71.43	(\$48.41)	\$9.92
RESIDUALS		\$489.13	\$791.61	\$881.81	\$397.61	\$237.23	\$342.31
ANCILLARY SERVICES		(\$540.07)	\$325.33	(\$375.87)	(\$993.51)	(\$1,066.36)	(\$1,133.31)
TCC		(\$742.14)	(\$1,363.44)	(\$778.23)	(\$554.43)	(\$377.46)	(\$650.10)
	7	8	9	10	11	12	13
ENERGY	\$3,935.91	(\$3,856.60)	\$3,307.24	\$3,335.37	\$53.70	\$144.62	\$100.59
TRANSMISSION SERVICE	(\$1,549.54)	(\$1,392.08)	(\$1,197.26)	(\$1,060.49)	(\$2,329.73)	(\$1,406.81)	(\$1,563.90)
UPLIFT	\$0.76	\$606.86	\$991.05	\$1,999.30	(\$0.01)	(\$0.01)	\$0.00
RESIDUALS	(\$673.44)	\$894.15	(\$232.24)	(\$290.11)	(\$275.49)	(\$331.47)	(\$74.20)
ANCILLARY SERVICES	(\$499.91)	(\$1,930.92)	(\$3,446.04)	(\$2,228.29)	(\$1,146.72)	\$37.23	\$252.42
TCC	(\$766.53)	\$708.51	\$2,449.71	\$1,371.27	(\$854.55)	(\$1,256.25)	(\$1,596.99)
	14	15	16	17	18	19	20
ENERGY	(\$1,438.70)	(\$813.25)	(\$12,150.57)	(\$12,834.22)	\$158,784.02	\$1,335.33	\$1,527.74
TRANSMISSION SERVICE	(\$1,804.33)	(\$1,164.81)	(\$1,836.41)	(\$1,793.23)	\$589.37	(\$1,352.28)	(\$1,275.22)
UPLIFT	\$6.52	\$980.39	\$36.31	\$2,179.73	(\$80.67)	(\$0.12)	\$5.82
RESIDUALS	\$383.78	(\$99.02)	(\$98.65)	\$10,726.89	(\$8,276.60)	\$1,921.83	(\$1,169.63)
ANCILLARY SERVICES	\$407.71	\$4,507.22	\$6,115.39	(\$6,352.07)	(\$8,497.17)	(\$5,149.05)	(\$3,645.88)
TCC	(\$1,970.37)	(\$5,520.18)	(\$7,768.38)	\$4,640.67	\$9,263.88	\$3,960.72	\$2,544.09
	21	22	23	24	25	26	27
ENERGY	(\$6,514.03)	(\$2,340.17)	(\$1,308.73)	\$7,994.28	\$16,821.45	(\$6,113.55)	(\$1,978.20)
TRANSMISSION SERVICE	(\$1,623.11)	(\$1,165.35)	(\$1,354.28)	(\$936.05)	(\$724.13)	(\$1,709.55)	(\$1,552.87)
UPLIFT	\$16.79	\$0.02	(\$0.04)	\$13.75	(\$0.04)	\$15.11	(\$165.46)
RESIDUALS	\$40.70	(\$376.99)	(\$595.42)	(\$329.01)	(\$194.65)	(\$81.25)	(\$941.15)
ANCILLARY SERVICES	(\$1,785.79)	(\$2,471.69)	(\$2,354.72)	(\$1,667.29)	(\$1,564.71)	(\$3,258.27)	(\$2,301.86)
TCC	\$312.90	\$1,403.37	\$1,131.93	\$897.24	\$1,044.09	\$1,706.49	\$886.95
	28	29	30	31			
ENERGY	\$7,848.16	\$44,873.30	\$965.70	(\$1,503.91)			
TRANSMISSION SERVICE	(\$1,013.41)	\$2,105.89	(\$1,190.86)	(\$1,090.16)			
UPLIFT	(\$0.02)	\$1,965.35	\$0.37	\$2.05			
RESIDUALS	\$1,278.73	(\$3,708.39)	(\$456.57)	\$155.76			
ANCILLARY SERVICES	(\$2,513.27)	\$1,219.03	(\$2,544.29)	(\$1,627.73)			
TCC	\$1,708.83	\$1,244.22	\$1,492.68	\$671.97			



SETTLEMENTS REPORT  
December 2020 Settlement Adjustment  
May 7, 2021

Initial Settlement – Market Supply Analysis

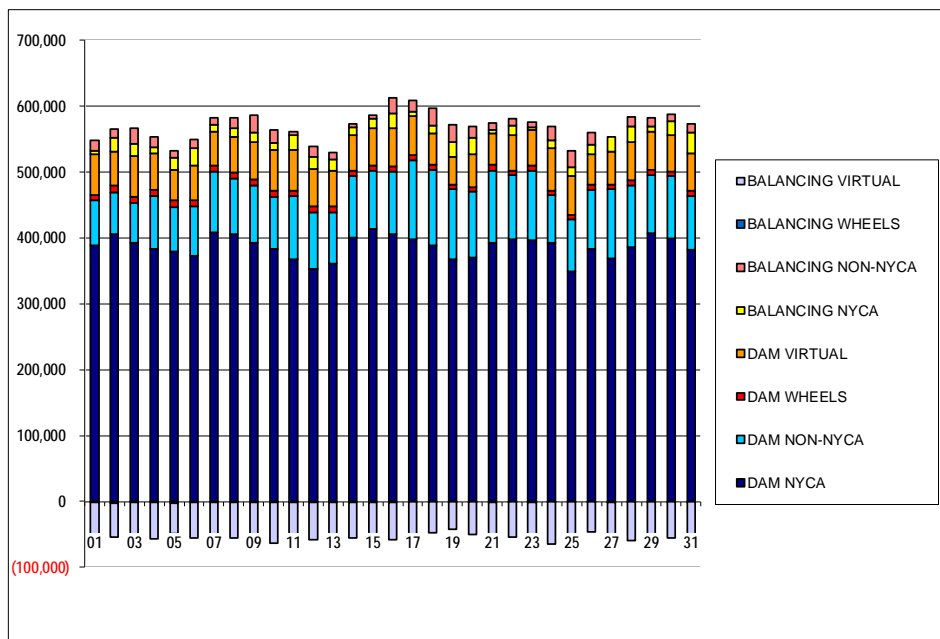
	MONDAY	TUESDAY	WEDNESDAY	THURSDAY	FRIDAY	SATURDAY	SUNDAY
		1	2	3	4	5	6
DAM NYCA		388,716	406,388	393,029	383,200	379,111	373,527
DAM NON-NYCA		68,535	63,230	60,470	80,611	67,854	74,524
DAM WHEELS		8,391	10,021	8,786	8,876	9,911	8,571
DAM VIRTUAL		61,641	51,679	62,185	55,466	46,677	53,404
BALANCING NYCA		5,247	20,529	18,086	9,696	18,295	26,801
BALANCING NON-NYCA		15,116	14,027	24,129	15,373	11,075	12,765
BALANCING WHEELS		(1,362)	(2,821)	(1,586)	(1,676)	(2,711)	(1,611)
BALANCING VIRTUAL		(61,641)	(51,679)	(62,185)	(55,466)	(46,677)	(53,404)
	7	8	9	10	11	12	13
DAM NYCA	408,707	406,317	392,288	383,790	367,000	353,748	361,269
DAM NON-NYCA	92,334	84,436	87,813	79,176	96,205	85,495	78,026
DAM WHEELS	8,605	8,457	8,235	8,399	8,282	9,100	8,495
DAM VIRTUAL	52,032	53,987	57,755	62,159	62,804	56,064	54,775
BALANCING NYCA	9,816	13,069	14,036	10,727	21,972	19,359	16,885
BALANCING NON-NYCA	10,142	15,752	26,083	19,088	5,031	15,793	10,392
BALANCING WHEELS	(1,405)	(1,207)	(1,035)	(1,099)	(982)	(1,900)	(1,295)
BALANCING VIRTUAL	(52,032)	(53,987)	(57,755)	(62,159)	(62,804)	(56,064)	(54,775)
	14	15	16	17	18	19	20
DAM NYCA	399,976	413,645	405,324	398,055	388,359	367,449	369,765
DAM NON-NYCA	93,751	88,275	94,830	120,294	115,544	106,283	100,564
DAM WHEELS	8,077	8,098	8,425	7,673	7,846	7,255	7,262
DAM VIRTUAL	54,025	56,373	57,738	58,369	46,328	41,840	49,629
BALANCING NYCA	11,967	14,293	22,984	6,873	11,290	22,953	24,736
BALANCING NON-NYCA	5,985	6,010	24,240	18,040	25,584	26,084	17,471
BALANCING WHEELS	(877)	(898)	(915)	(473)	(571)	(55)	(62)
BALANCING VIRTUAL	(54,025)	(56,373)	(57,738)	(58,369)	(46,328)	(41,840)	(49,629)
	21	22	23	24	25	26	27
DAM NYCA	393,167	397,569	396,693	392,800	348,652	383,755	368,490
DAM NON-NYCA	108,330	97,279	105,780	72,048	79,030	89,875	105,265
DAM WHEELS	9,115	7,285	8,079	7,431	7,677	7,629	7,537
DAM VIRTUAL	48,690	54,391	53,652	64,249	58,805	46,084	49,639
BALANCING NYCA	4,910	14,459	3,879	11,526	13,296	13,868	22,656
BALANCING NON-NYCA	10,055	9,815	8,608	21,452	24,489	19,154	(660)
BALANCING WHEELS	(1,915)	(85)	(879)	(231)	(477)	(429)	(337)
BALANCING VIRTUAL	(48,690)	(54,391)	(53,652)	(64,249)	(58,805)	(46,084)	(49,639)
	28	29	30	31			
DAM NYCA	385,400	406,727	399,566	382,229			
DAM NON-NYCA	94,374	88,905	94,025	81,057			
DAM WHEELS	7,269	7,279	7,286	7,802			
DAM VIRTUAL	58,715	58,421	55,550	57,013			
BALANCING NYCA	23,119	5,408	20,360	32,250			
BALANCING NON-NYCA	15,114	13,130	11,563	13,034			
BALANCING WHEELS	(69)	(43)	(286)	(602)			
BALANCING VIRTUAL	(58,715)	(58,421)	(55,550)	(57,013)			



SETTLEMENTS REPORT  
December 2020 Settlement Adjustment  
May 7, 2021

4-Month Settlement Adjustment – Market Supply Analysis

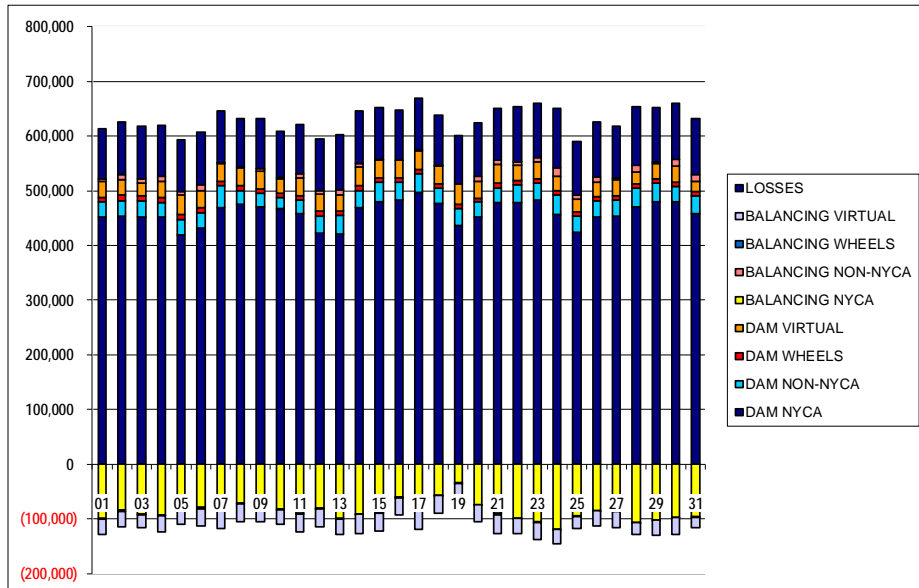
	MONDAY	TUESDAY	WEDNESDAY	THURSDAY	FRIDAY	SATURDAY	SUNDAY
		1	2	3	4	5	6
DAM NYCA		388,716	406,388	393,029	383,200	379,111	373,527
DAM NON-NYCA		68,535	63,230	60,470	80,611	67,854	74,524
DAM WHEELS		8,391	10,021	8,786	8,876	9,911	8,571
DAM VIRTUAL		61,641	51,679	62,185	55,466	46,677	53,404
BALANCING NYCA		5,227	20,454	18,057	9,564	18,162	26,690
BALANCING NON-NYCA		15,116	14,027	24,129	15,373	11,075	12,765
BALANCING WHEELS		(1,362)	(2,821)	(1,586)	(1,676)	(2,711)	(3,611)
BALANCING VIRTUAL		(61,641)	(51,679)	(62,185)	(55,466)	(46,677)	(53,404)
	7	8	9	10	11	12	13
DAM NYCA	408,707	406,317	392,288	383,790	367,000	353,748	361,269
DAM NON-NYCA	92,334	84,436	87,813	79,176	96,205	85,495	78,026
DAM WHEELS	8,605	8,457	8,235	8,399	8,282	9,100	8,495
DAM VIRTUAL	52,032	53,987	57,755	62,159	62,804	56,064	54,775
BALANCING NYCA	9,926	12,944	14,107	10,837	21,936	19,303	16,858
BALANCING NON-NYCA	10,142	15,752	26,083	19,088	5,031	15,793	10,392
BALANCING WHEELS	(1,405)	(1,207)	(1,035)	(1,099)	(982)	(1,900)	(1,295)
BALANCING VIRTUAL	(52,032)	(53,987)	(57,755)	(62,159)	(62,804)	(56,064)	(54,775)
	14	15	16	17	18	19	20
DAM NYCA	399,976	413,645	405,324	398,055	388,359	367,449	369,765
DAM NON-NYCA	93,751	88,275	94,830	120,294	115,544	106,283	100,564
DAM WHEELS	8,077	8,098	8,425	7,673	7,846	7,255	7,262
DAM VIRTUAL	54,025	56,373	57,738	58,369	46,328	41,840	49,629
BALANCING NYCA	11,897	14,229	22,703	6,838	12,653	23,042	24,690
BALANCING NON-NYCA	5,985	6,010	24,240	18,040	25,584	26,084	17,471
BALANCING WHEELS	(877)	(898)	(915)	(473)	(571)	(55)	(62)
BALANCING VIRTUAL	(54,025)	(56,373)	(57,738)	(58,369)	(46,328)	(41,840)	(49,629)
	21	22	23	24	25	26	27
DAM NYCA	393,167	397,569	396,693	392,800	348,652	383,755	368,490
DAM NON-NYCA	108,330	97,279	105,780	72,048	79,030	89,875	105,265
DAM WHEELS	9,115	7,285	8,079	7,431	7,677	7,629	7,537
DAM VIRTUAL	48,690	54,391	53,652	64,249	58,805	46,084	49,639
BALANCING NYCA	4,630	14,213	3,649	11,622	13,616	13,563	22,357
BALANCING NON-NYCA	10,055	9,815	8,608	21,452	24,489	19,154	(660)
BALANCING WHEELS	(1,915)	(85)	(879)	(231)	(477)	(429)	(337)
BALANCING VIRTUAL	(48,690)	(54,391)	(53,652)	(64,249)	(58,805)	(46,084)	(49,639)
	28	29	30	31			
DAM NYCA	385,400	406,727	399,566	382,229			
DAM NON-NYCA	94,374	88,905	94,025	81,057			
DAM WHEELS	7,269	7,279	7,286	7,802			
DAM VIRTUAL	58,715	58,421	55,550	57,013			
BALANCING NYCA	23,267	7,498	20,244	32,176			
BALANCING NON-NYCA	15,114	13,130	11,563	13,034			
BALANCING WHEELS	(69)	(43)	(286)	(602)			
BALANCING VIRTUAL	(58,715)	(58,421)	(55,550)	(57,013)			



SETTLEMENTS REPORT  
December 2020 Settlement Adjustment  
May 7, 2021

Initial Settlement – Market Withdrawals Analysis

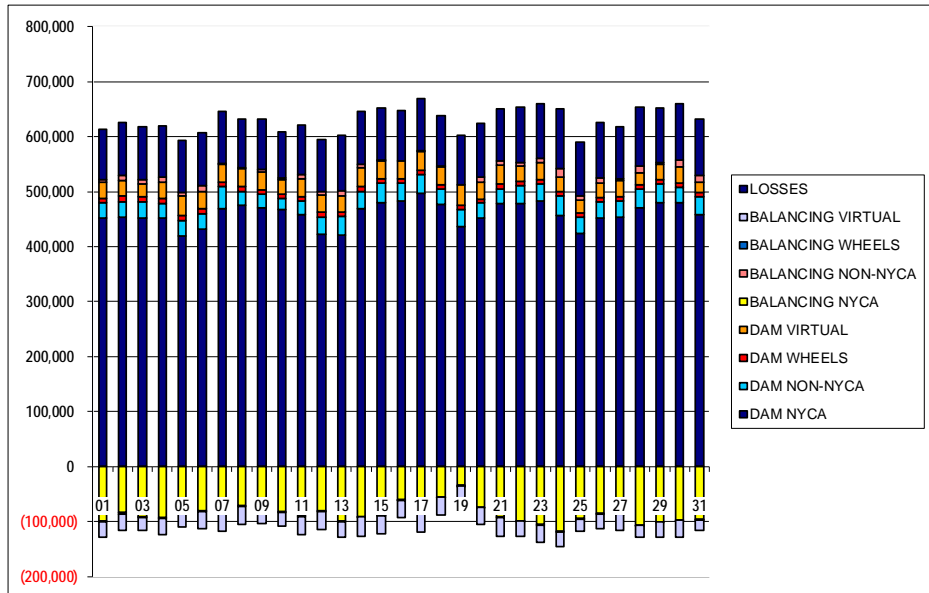
	MONDAY	TUESDAY	WEDNESDAY	THURSDAY	FRIDAY	SATURDAY	SUNDAY
		1	2	3	4	5	6
DAM NYCA		452,467	453,191	452,238	452,056	419,379	431,269
DAM NON-NYCA		27,348	28,573	29,634	25,926	27,600	28,626
DAM WHEELS		8,391	10,021	8,786	8,976	9,911	8,571
DAM VIRTUAL		28,577	28,877	23,395	30,452	36,017	31,074
BALANCING NYCA		(98,761)	(83,319)	(90,659)	(91,772)	(70,908)	(79,306)
BALANCING NON-NYCA		5,437	8,720	7,841	8,821	5,935	11,960
BALANCING WHEELS		(1,362)	(2,821)	(1,586)	(1,676)	(2,711)	(1,611)
BALANCING VIRTUAL		(28,577)	(28,877)	(23,395)	(30,452)	(36,017)	(31,074)
UFE/LOSSES		91,122	97,008	96,660	93,848	94,329	95,067
	7	8	9	10	11	12	13
DAM NYCA	468,800	474,785	471,163	466,926	457,714	423,168	421,259
DAM NON-NYCA	39,788	25,384	24,283	20,392	24,684	30,806	33,667
DAM WHEELS	8,605	8,457	8,235	8,399	8,282	9,100	8,495
DAM VIRTUAL	33,099	32,773	31,502	26,257	32,992	31,418	29,272
BALANCING NYCA	(82,802)	(71,249)	(71,645)	(81,471)	(89,490)	(80,316)	(98,355)
BALANCING NON-NYCA	495	1,843	5,756	3,014	6,626	5,300	8,746
BALANCING WHEELS	(1,405)	(1,207)	(1,035)	(1,099)	(982)	(1,900)	(1,295)
BALANCING VIRTUAL	(33,099)	(32,773)	(31,502)	(26,257)	(32,992)	(31,418)	(29,272)
UFE/LOSSES	94,719	88,812	90,662	83,919	90,673	95,438	101,254
	14	15	16	17	18	19	20
DAM NYCA	469,426	480,091	483,711	497,477	476,216	435,724	452,164
DAM NON-NYCA	31,212	34,748	31,725	33,203	28,885	32,102	27,390
DAM WHEELS	8,077	8,098	8,425	7,673	7,846	7,255	7,262
DAM VIRTUAL	35,431	33,009	31,566	34,345	32,371	36,737	29,854
BALANCING NYCA	(90,383)	(88,102)	(59,801)	(83,887)	(56,677)	(33,707)	(74,456)
BALANCING NON-NYCA	4,948	854	(277)	1,323	599	(1,134)	10,475
BALANCING WHEELS	(877)	(898)	(915)	(473)	(571)	(55)	(62)
BALANCING VIRTUAL	(35,431)	(33,009)	(31,566)	(34,345)	(32,371)	(36,737)	(29,854)
UFE/LOSSES	96,475	94,631	92,020	95,147	91,754	89,784	96,964
	21	22	23	24	25	26	27
DAM NYCA	478,599	477,936	483,230	457,347	424,614	452,417	453,442
DAM NON-NYCA	26,056	32,677	30,853	34,634	29,494	29,194	29,510
DAM WHEELS	9,115	7,285	8,079	7,431	7,677	7,629	7,537
DAM VIRTUAL	34,040	28,019	30,610	27,394	22,301	26,992	29,359
BALANCING NYCA	(90,189)	(98,791)	(105,449)	(118,132)	(94,762)	(84,888)	(85,400)
BALANCING NON-NYCA	7,466	7,183	7,138	14,787	7,887	9,037	3,023
BALANCING WHEELS	(1,915)	(85)	(879)	(231)	(477)	(429)	(337)
BALANCING VIRTUAL	(34,040)	(28,019)	(30,610)	(27,394)	(22,301)	(26,992)	(29,359)
UFE/LOSSES	94,530	100,119	99,187	109,189	98,234	100,892	95,177
	28	29	30	31			
DAM NYCA	471,303	479,738	480,020	457,930			
DAM NON-NYCA	34,042	34,629	28,217	32,303			
DAM WHEELS	7,269	7,279	7,286	7,802			
DAM VIRTUAL	22,323	28,501	29,809	18,940			
BALANCING NYCA	(106,073)	(101,743)	(97,340)	(96,035)			
BALANCING NON-NYCA	12,337	2,834	12,432	13,278			
BALANCING WHEELS	(69)	(43)	(286)	(602)			
BALANCING VIRTUAL	(22,323)	(28,501)	(29,809)	(18,940)			
UFE/LOSSES	106,399	98,713	102,184	101,093			



SETTLEMENTS REPORT  
December 2020 Settlement Adjustment  
May 7, 2021

4-Month Settlement Adjustment – Market Withdrawals Analysis

	MONDAY	TUESDAY	WEDNESDAY	THURSDAY	FRIDAY	SATURDAY	SUNDAY
		1	2	3	4	5	6
DAM NYCA		452,467	453,191	452,238	452,056	419,379	431,269
DAM NON-NYCA		27,348	28,573	29,634	25,926	27,600	28,626
DAM WHEELS		8,391	10,021	8,786	8,876	9,911	8,571
DAM VIRTUAL		28,577	28,877	23,395	30,452	36,017	31,074
BALANCING NYCA		(98,790)	(83,418)	(90,717)	(91,915)	(71,047)	(79,419)
BALANCING NON-NYCA		5,437	8,720	7,841	8,821	5,935	11,960
BALANCING WHEELS		(1,362)	(2,821)	(1,586)	(1,676)	(2,711)	(1,611)
BALANCING VIRTUAL		(28,577)	(28,877)	(23,395)	(30,452)	(36,017)	(31,074)
UFE/LOSSES		91,132	97,033	96,689	93,859	94,335	95,068
	7	8	9	10	11	12	13
DAM NYCA	468,800	474,785	471,163	466,926	457,714	423,168	421,259
DAM NON-NYCA	39,788	25,384	24,283	20,392	24,684	30,806	33,667
DAM WHEELS	8,605	8,457	8,235	8,399	8,282	9,100	8,495
DAM VIRTUAL	33,099	32,773	31,502	26,257	32,992	31,418	29,272
BALANCING NYCA	(82,617)	(71,354)	(71,568)	(81,355)	(89,526)	(80,374)	(98,383)
BALANCING NON-NYCA	495	1,843	5,756	3,014	6,626	5,300	8,746
BALANCING WHEELS	(1,405)	(1,207)	(1,035)	(1,099)	(982)	(1,900)	(1,295)
BALANCING VIRTUAL	(33,099)	(32,773)	(31,502)	(26,257)	(32,992)	(31,418)	(29,272)
UFE/LOSSES	94,644	88,791	90,657	83,913	90,674	95,440	101,256
	14	15	16	17	18	19	20
DAM NYCA	469,426	480,091	483,711	497,477	476,216	435,724	452,164
DAM NON-NYCA	31,212	34,748	31,725	33,203	28,885	32,102	27,390
DAM WHEELS	8,077	8,098	8,425	7,673	7,846	7,255	7,262
DAM VIRTUAL	35,431	33,009	31,566	34,345	32,371	36,737	29,854
BALANCING NYCA	(90,458)	(88,164)	(60,093)	(84,214)	(55,363)	(33,817)	(74,503)
BALANCING NON-NYCA	4,948	854	(277)	1,323	599	(1,134)	10,475
BALANCING WHEELS	(877)	(898)	(915)	(473)	(571)	(55)	(62)
BALANCING VIRTUAL	(35,431)	(33,009)	(31,566)	(34,345)	(32,371)	(36,737)	(29,854)
UFE/LOSSES	96,480	94,630	92,031	95,439	91,804	89,983	96,966
	21	22	23	24	25	26	27
DAM NYCA	478,599	477,936	483,230	457,347	424,614	452,417	453,442
DAM NON-NYCA	26,056	32,677	30,853	34,634	29,494	29,194	29,510
DAM WHEELS	9,115	7,285	8,079	7,431	7,677	7,629	7,537
DAM VIRTUAL	34,040	28,019	30,610	27,394	22,301	26,992	29,359
BALANCING NYCA	(90,473)	(99,031)	(105,666)	(118,035)	(94,441)	(85,195)	(85,699)
BALANCING NON-NYCA	7,466	7,183	7,138	14,787	7,887	9,037	3,023
BALANCING WHEELS	(1,915)	(85)	(879)	(231)	(477)	(429)	(337)
BALANCING VIRTUAL	(34,040)	(28,019)	(30,610)	(27,394)	(22,301)	(26,992)	(29,359)
UFE/LOSSES	94,533	100,113	99,175	109,188	98,234	100,894	95,177
	28	29	30	31			
DAM NYCA	471,303	479,738	480,020	457,930			
DAM NON-NYCA	34,042	34,629	28,217	32,303			
DAM WHEELS	7,269	7,279	7,286	7,802			
DAM VIRTUAL	22,323	28,501	29,809	18,940			
BALANCING NYCA	(106,006)	(99,554)	(97,455)	(96,114)			
BALANCING NON-NYCA	12,337	2,834	12,432	13,278			
BALANCING WHEELS	(69)	(43)	(286)	(602)			
BALANCING VIRTUAL	(22,323)	(28,501)	(29,809)	(18,940)			
UFE/LOSSES	106,479	98,614	102,183	101,098			

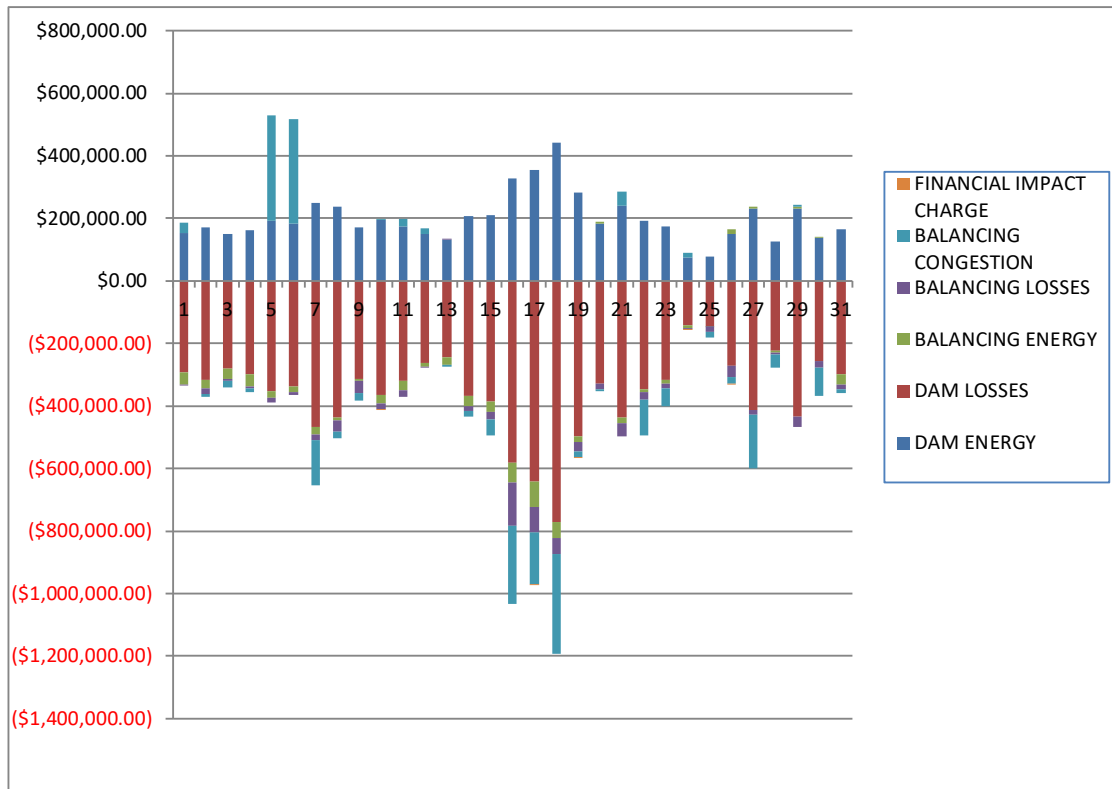




SETTLEMENTS REPORT  
December 2020 Settlement Adjustment  
May 7, 2021

Initial Settlement – Market Residuals Analysis

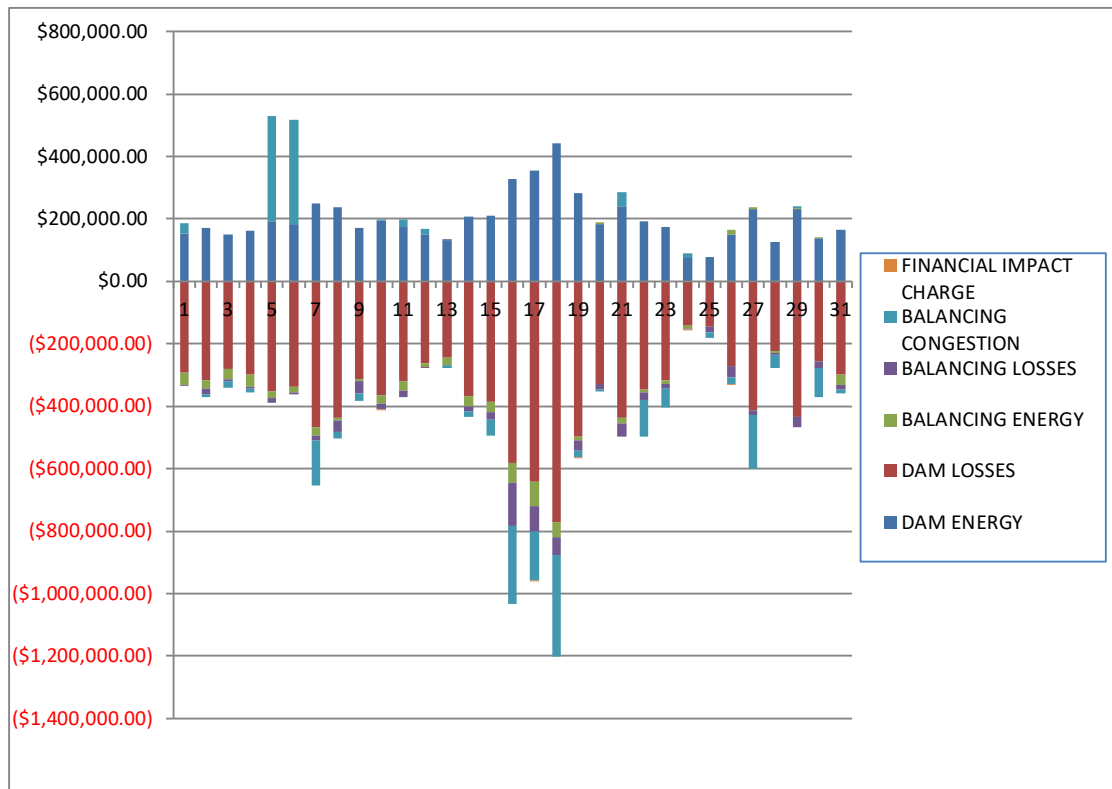
	MONDAY	TUESDAY	WEDNESDAY	THURSDAY	FRIDAY	SATURDAY	SUNDAY
		1	2	3	4	5	6
DAM ENERGY		\$153,403.87	\$172,277.32	\$148,848.31	\$162,432.33	\$191,286.58	\$183,209.37
DAM LOSSES		(\$293,053.43)	(\$317,639.63)	(\$279,152.85)	(\$299,133.18)	(\$353,295.88)	(\$336,593.16)
BALANCING ENERGY		(\$37,785.25)	(\$25,235.07)	(\$34,450.07)	(\$39,780.67)	(\$20,339.69)	(\$18,006.22)
BALANCING LOSSES		(\$834.54)	(\$19,718.14)	(\$6,558.57)	(\$5,263.16)	(\$14,647.26)	(\$8,691.31)
BALANCING CONGESTION		\$32,438.78	(\$7,826.50)	(\$20,703.88)	(\$12,501.72)	\$337,836.59	\$333,101.75
FINANCIAL IMPACT CHARGE		\$0.00	\$0.00	\$0.00	\$0.00	\$0.00	\$0.00
	7	8	9	10	11	12	13
DAM ENERGY	\$250,938.23	\$238,141.17	\$172,455.45	\$196,485.01	\$175,790.21	\$149,914.54	\$132,402.25
DAM LOSSES	(\$466,983.65)	(\$437,745.99)	(\$312,336.13)	(\$363,424.16)	(\$318,619.10)	(\$263,329.09)	(\$243,827.98)
BALANCING ENERGY	(\$25,400.54)	(\$7,792.86)	(\$8,004.05)	(\$27,050.55)	(\$32,379.52)	(\$10,631.35)	(\$24,394.89)
BALANCING LOSSES	(\$16,564.33)	(\$36,310.09)	(\$37,380.29)	(\$19,269.08)	(\$20,641.81)	(\$1,810.15)	\$1,409.27
BALANCING CONGESTION	(\$144,399.26)	(\$20,936.37)	(\$23,627.42)	\$1,819.49	\$23,218.54	\$19,834.21	(\$7,496.52)
FINANCIAL IMPACT CHARGE	\$0.00	\$0.00	\$0.00	(\$81.12)	\$0.00	\$0.00	\$0.00
	14	15	16	17	18	19	20
DAM ENERGY	\$207,118.47	\$210,269.69	\$328,271.72	\$353,671.76	\$441,308.90	\$284,184.39	\$184,760.02
DAM LOSSES	(\$367,673.75)	(\$384,646.78)	(\$580,137.22)	(\$642,085.12)	(\$772,197.68)	(\$496,799.89)	(\$329,543.02)
BALANCING ENERGY	(\$32,645.59)	(\$34,167.32)	(\$65,089.37)	(\$81,608.08)	(\$49,508.97)	(\$17,091.59)	\$4,016.72
BALANCING LOSSES	(\$15,774.06)	(\$23,367.70)	(\$137,080.02)	(\$79,997.70)	(\$53,238.12)	(\$30,626.18)	(\$16,709.41)
BALANCING CONGESTION	(\$18,324.02)	(\$53,059.74)	(\$251,341.50)	(\$165,798.86)	(\$318,896.65)	(\$20,154.96)	(\$5,517.30)
FINANCIAL IMPACT CHARGE	\$0.00	\$0.00	\$0.00	(\$150.03)	\$0.00	(\$30.33)	\$0.00
	21	22	23	24	25	26	27
DAM ENERGY	\$239,300.20	\$191,649.62	\$173,909.33	\$75,319.17	\$78,386.57	\$151,655.64	\$230,654.01
DAM LOSSES	(\$435,806.13)	(\$346,954.60)	(\$317,785.34)	(\$142,949.05)	(\$144,864.72)	(\$271,670.72)	(\$412,413.22)
BALANCING ENERGY	(\$18,272.14)	(\$8,677.96)	(\$10,067.58)	(\$7,088.31)	(\$337.00)	\$14,415.53	\$5,784.17
BALANCING LOSSES	(\$42,951.87)	(\$25,559.56)	(\$15,562.62)	(\$4,027.36)	(\$17,873.54)	(\$36,892.77)	(\$14,479.48)
BALANCING CONGESTION	\$47,322.25	(\$114,234.18)	(\$58,830.64)	\$14,232.85	(\$17,224.50)	(\$20,171.73)	(\$171,889.88)
FINANCIAL IMPACT CHARGE	\$0.00	\$0.00	\$0.00	(\$1.70)	\$0.00	(\$1,014.08)	\$0.00
	28	29	30	31			
DAM ENERGY	\$125,184.20	\$232,218.15	\$138,607.67	\$164,763.07			
DAM LOSSES	(\$224,117.74)	(\$434,768.97)	(\$257,443.78)	(\$298,972.61)			
BALANCING ENERGY	(\$4,386.49)	\$4,177.23	\$691.92	(\$32,618.05)			
BALANCING LOSSES	(\$7,574.19)	(\$33,444.27)	(\$18,880.60)	(\$16,133.44)			
BALANCING CONGESTION	(\$41,535.10)	\$7,819.32	(\$92,704.89)	(\$12,167.03)			
FINANCIAL IMPACT CHARGE	\$0.00	\$0.00	\$0.00	\$0.00			



SETTLEMENTS REPORT  
December 2020 Settlement Adjustment  
May 7, 2021

4-Month Settlement Adjustment – Market Residuals Analysis

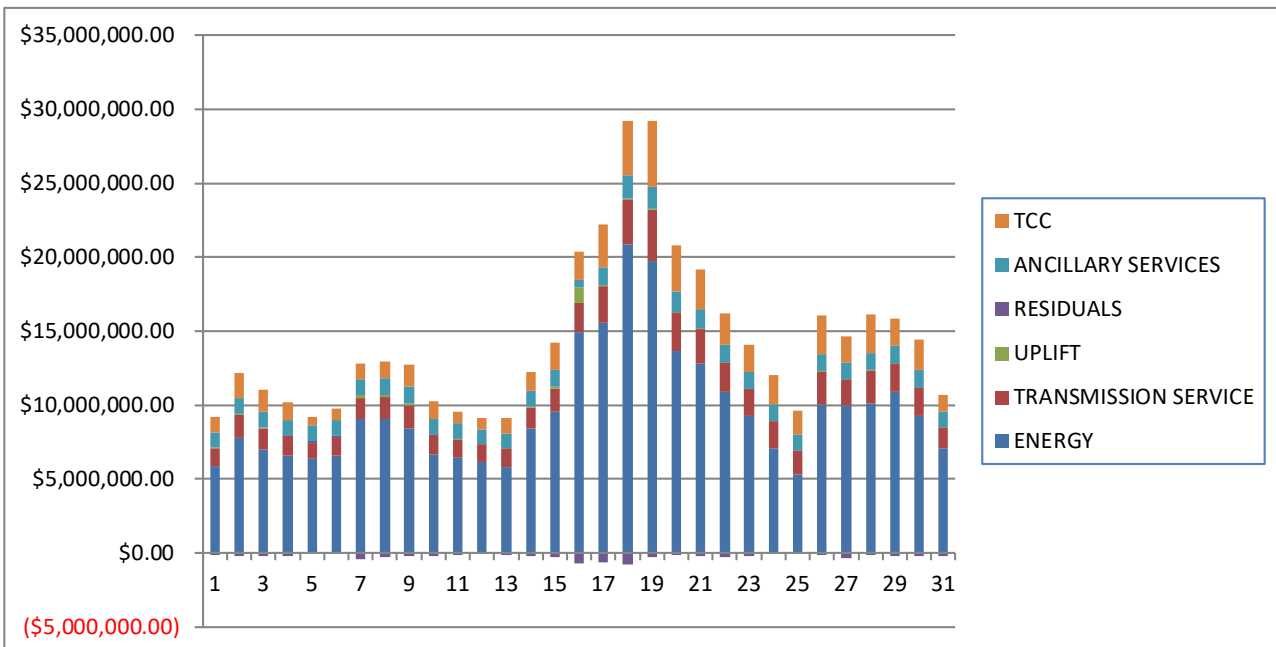
	MONDAY	TUESDAY	WEDNESDAY	THURSDAY	FRIDAY	SATURDAY	SUNDAY
		1	2	3	4	5	6
DAM ENERGY		\$153,403.86	\$172,277.31	\$148,848.30	\$162,432.33	\$191,286.59	\$183,209.36
DAM LOSSES		(\$293,053.44)	(\$317,639.63)	(\$279,152.85)	(\$299,133.18)	(\$353,295.88)	(\$336,593.16)
BALANCING ENERGY		(\$37,663.67)	(\$24,672.68)	(\$33,827.96)	(\$39,538.92)	(\$20,256.32)	(\$17,967.76)
BALANCING LOSSES		(\$464.87)	(\$19,377.35)	(\$6,276.47)	(\$5,059.92)	(\$14,325.75)	(\$8,355.91)
BALANCING CONGESTION		\$32,436.68	(\$7,938.06)	(\$20,726.27)	(\$12,549.10)	\$337,668.93	\$333,070.21
FINANCIAL IMPACT CHARGE		\$0.00	\$0.00	\$0.00	\$0.00	\$0.00	\$0.00
	7	8	9	10	11	12	13
DAM ENERGY	\$250,938.23	\$238,141.18	\$172,455.45	\$196,485.01	\$175,790.21	\$149,914.54	\$132,402.25
DAM LOSSES	(\$466,983.64)	(\$437,745.99)	(\$312,336.13)	(\$363,424.16)	(\$318,619.09)	(\$263,329.09)	(\$243,827.98)
BALANCING ENERGY	(\$27,171.76)	(\$8,097.27)	(\$8,071.53)	(\$27,327.34)	(\$32,372.15)	(\$10,609.25)	(\$24,346.62)
BALANCING LOSSES	(\$16,266.55)	(\$35,883.16)	(\$37,163.67)	(\$18,896.17)	(\$20,481.84)	(\$1,776.82)	\$1,520.89
BALANCING CONGESTION	(\$143,599.27)	(\$20,164.75)	(\$24,008.80)	\$1,433.37	\$22,775.70	\$19,447.31	(\$7,730.61)
FINANCIAL IMPACT CHARGE	\$0.00	\$0.00	\$0.00	(\$81.23)	\$0.00	\$0.00	\$0.00
	14	15	16	17	18	19	20
DAM ENERGY	\$207,118.48	\$210,269.68	\$328,271.72	\$353,671.75	\$441,308.89	\$284,184.39	\$184,760.02
DAM LOSSES	(\$367,673.75)	(\$384,646.77)	(\$580,137.22)	(\$642,085.12)	(\$772,197.68)	(\$496,799.90)	(\$329,543.02)
BALANCING ENERGY	(\$32,555.27)	(\$34,121.65)	(\$64,972.66)	(\$78,671.27)	(\$47,640.57)	(\$13,669.92)	\$4,044.33
BALANCING LOSSES	(\$15,587.38)	(\$23,107.59)	(\$136,715.56)	(\$79,540.21)	(\$55,552.98)	(\$30,700.09)	(\$16,711.98)
BALANCING CONGESTION	(\$18,217.25)	(\$53,464.54)	(\$251,921.32)	(\$158,466.39)	(\$326,726.78)	(\$21,580.93)	(\$6,711.97)
FINANCIAL IMPACT CHARGE	\$0.00	\$0.00	\$0.00	(\$149.90)	\$0.00	(\$30.28)	\$0.00
	21	22	23	24	25	26	27
DAM ENERGY	\$239,300.21	\$191,649.61	\$173,909.34	\$75,319.16	\$78,386.58	\$151,655.64	\$230,654.01
DAM LOSSES	(\$435,806.13)	(\$346,954.59)	(\$317,785.34)	(\$142,949.05)	(\$144,864.72)	(\$271,670.71)	(\$412,413.21)
BALANCING ENERGY	(\$18,167.58)	(\$8,770.95)	(\$10,321.31)	(\$7,113.74)	(\$359.62)	\$14,472.05	\$5,831.67
BALANCING LOSSES	(\$42,810.44)	(\$25,428.05)	(\$15,614.64)	(\$3,942.43)	(\$17,754.53)	(\$36,719.20)	(\$14,388.64)
BALANCING CONGESTION	\$47,116.95	(\$114,649.69)	(\$59,120.32)	\$13,844.35	(\$17,515.55)	(\$20,483.24)	(\$172,969.38)
FINANCIAL IMPACT CHARGE	\$0.00	\$0.00	\$0.00	(\$1.70)	\$0.00	(\$1,013.92)	\$0.00
	28	29	30	31			
DAM ENERGY	\$125,184.20	\$232,218.15	\$138,607.67	\$164,763.07			
DAM LOSSES	(\$224,117.74)	(\$434,768.98)	(\$257,443.78)	(\$298,972.61)			
BALANCING ENERGY	(\$4,136.98)	\$886.43	\$696.02	(\$32,490.89)			
BALANCING LOSSES	(\$7,542.95)	(\$33,751.11)	(\$18,789.20)	(\$15,813.12)			
BALANCING CONGESTION	(\$40,537.12)	\$7,708.58	(\$93,256.96)	(\$12,458.75)			
FINANCIAL IMPACT CHARGE	\$0.00	\$0.00	\$0.00	\$0.00			



SETTLEMENTS REPORT  
December 2020 Settlement Adjustment  
May 7, 2021

Initial Settlement – Market Costs Analysis

	MONDAY	TUESDAY	WEDNESDAY	THURSDAY	FRIDAY	SATURDAY	SUNDAY
		1	2	3	4	5	6
ENERGY		\$5,865,078.65	\$7,805,646.33	\$6,973,859.34	\$6,589,141.02	\$6,370,265.67	\$6,588,131.19
TRANSMISSION SERVICE		\$1,187,902.27	\$1,497,975.20	\$1,462,923.92	\$1,327,821.52	\$1,046,822.83	\$1,181,509.90
UPLIFT		\$80,929.30	\$113,916.54	\$53,072.35	\$13,214.08	\$22,430.15	\$23,475.29
RESIDUALS		(\$145,830.57)	(\$198,142.02)	(\$192,017.06)	(\$194,246.40)	\$140,840.34	\$153,020.43
ANCILLARY SERVICES		\$1,009,987.66	\$1,046,615.04	\$1,042,085.42	\$1,043,084.70	\$1,031,934.54	\$1,020,236.75
TCC		\$1,055,515.67	\$1,677,063.42	\$1,522,796.12	\$1,242,714.46	\$551,205.03	\$776,476.52
	7	8	9	10	11	12	13
ENERGY	\$9,080,308.42	\$9,046,746.41	\$8,394,732.54	\$6,672,669.35	\$6,466,184.42	\$6,183,887.96	\$5,796,168.30
TRANSMISSION SERVICE	\$1,380,615.16	\$1,457,904.27	\$1,571,119.91	\$1,306,728.62	\$1,185,824.27	\$1,148,556.08	\$1,258,577.22
UPLIFT	\$224,062.97	\$159,465.39	\$115,882.26	\$29,205.30	\$72,351.59	\$3,850.22	\$5,443.21
RESIDUALS	(\$402,409.55)	(\$264,644.14)	(\$208,892.44)	(\$211,520.41)	(\$172,631.68)	(\$106,021.84)	(\$141,907.87)
ANCILLARY SERVICES	\$1,068,573.26	\$1,117,544.22	\$1,150,552.60	\$1,055,383.45	\$1,027,293.33	\$1,015,499.40	\$979,838.39
TCC	\$1,037,149.48	\$1,174,201.14	\$1,481,419.92	\$1,167,031.92	\$762,318.06	\$770,634.22	\$1,071,642.56
	14	15	16	17	18	19	20
ENERGY	\$8,410,413.20	\$9,521,259.83	\$14,948,036.35	\$15,589,598.04	\$20,841,169.52	\$19,723,519.40	\$13,662,391.30
TRANSMISSION SERVICE	\$1,442,842.17	\$1,611,443.95	\$1,941,165.15	\$2,470,747.50	\$3,064,306.04	\$3,469,600.65	\$2,629,638.04
UPLIFT	\$16,907.20	\$83,117.30	\$1,071,488.86	\$77,994.75	\$84,528.39	\$57,202.55	\$9,956.90
RESIDUALS	(\$227,298.95)	(\$284,971.85)	(\$705,376.39)	(\$615,968.03)	(\$752,532.52)	(\$280,518.56)	(\$162,992.99)
ANCILLARY SERVICES	\$1,124,493.37	\$1,159,381.00	\$512,819.27	\$1,208,055.62	\$1,550,750.16	\$1,500,017.83	\$1,385,198.18
TCC	\$1,251,725.97	\$1,818,221.95	\$1,883,787.99	\$2,903,346.85	\$3,697,190.32	\$4,488,423.72	\$3,092,292.06
	21	22	23	24	25	26	27
ENERGY	\$12,830,549.62	\$10,891,290.73	\$9,232,473.92	\$7,059,866.25	\$5,324,342.90	\$10,043,352.57	\$9,959,733.45
TRANSMISSION SERVICE	\$2,331,052.83	\$1,989,582.81	\$1,838,852.96	\$1,852,839.69	\$1,602,087.66	\$2,202,019.42	\$1,767,419.06
UPLIFT	\$52,912.48	\$7,617.49	\$2,755.72	\$22,532.56	\$36,455.24	\$35,425.01	\$27,717.18
RESIDUALS	(\$210,407.69)	(\$303,776.68)	(\$228,336.85)	(\$64,514.40)	(\$101,913.19)	(\$163,678.13)	(\$362,344.40)
ANCILLARY SERVICES	\$1,262,563.41	\$1,183,916.68	\$1,131,647.82	\$1,079,178.10	\$1,005,897.39	\$1,193,462.37	\$1,128,763.22
TCC	\$2,706,868.76	\$2,143,041.15	\$1,880,397.27	\$2,032,566.55	\$1,672,619.72	\$2,569,306.54	\$1,753,202.57
	28	29	30	31			
ENERGY	\$10,124,251.17	\$10,900,885.92	\$9,250,279.17	\$7,046,075.69			
TRANSMISSION SERVICE	\$2,204,481.52	\$1,884,247.53	\$1,922,051.37	\$1,415,347.43			
UPLIFT	\$22,036.28	\$16,047.14	\$11,920.39	\$21,927.49			
RESIDUALS	(\$152,429.32)	(\$223,998.54)	(\$229,729.68)	(\$195,128.06)			
ANCILLARY SERVICES	\$1,194,341.86	\$1,174,287.54	\$1,179,999.61	\$1,079,454.37			
TCC	\$2,613,550.60	\$1,900,683.06	\$2,035,419.71	\$1,148,838.20			



SETTLEMENTS REPORT  
December 2020 Settlement Adjustment  
May 7, 2021

4-Month Settlement Adjustment – Market Costs Analysis

	MONDAY	TUESDAY	WEDNESDAY	THURSDAY	FRIDAY	SATURDAY	SUNDAY
		1	2	3	4	5	6
ENERGY		\$5,864,228.59	\$7,803,383.49	\$6,972,912.71	\$6,586,485.60	\$6,367,597.99	\$6,585,579.53
TRANSMISSION SERVICE		\$1,186,411.31	\$1,496,793.40	\$1,461,593.43	\$1,326,060.18	\$1,045,182.60	\$1,179,462.08
UPLIFT		\$80,921.38	\$113,903.19	\$53,068.68	\$13,285.51	\$22,381.74	\$23,485.21
RESIDUALS		(\$145,341.44)	(\$197,350.41)	(\$191,135.25)	(\$193,848.79)	\$141,077.57	\$153,362.74
ANCILLARY SERVICES		\$1,009,447.59	\$1,046,940.37	\$1,041,709.55	\$1,042,091.19	\$1,030,868.18	\$1,019,103.44
TCC		\$1,054,773.53	\$1,675,699.98	\$1,522,017.89	\$1,242,160.03	\$550,827.57	\$775,826.42
	7	8	9	10	11	12	13
ENERGY	\$9,084,244.33	\$9,042,889.81	\$8,398,039.78	\$6,676,004.72	\$6,466,238.12	\$6,184,032.58	\$5,796,268.89
TRANSMISSION SERVICE	\$1,379,065.62	\$1,456,512.19	\$1,569,922.65	\$1,305,668.13	\$1,183,494.54	\$1,147,149.27	\$1,257,013.32
UPLIFT	\$224,063.73	\$160,072.25	\$116,873.31	\$31,204.60	\$72,351.58	\$3,850.21	\$5,443.21
RESIDUALS	(\$403,082.99)	(\$263,749.99)	(\$209,124.68)	(\$211,810.52)	(\$172,907.17)	(\$106,353.31)	(\$141,982.07)
ANCILLARY SERVICES	\$1,068,073.35	\$1,115,613.30	\$1,147,106.56	\$1,053,155.16	\$1,026,146.61	\$1,015,536.63	\$980,090.81
TCC	\$1,036,382.95	\$1,174,909.65	\$1,483,869.63	\$1,168,403.19	\$761,463.51	\$769,377.97	\$1,070,045.57
	14	15	16	17	18	19	20
ENERGY	\$8,408,974.50	\$9,520,446.58	\$14,935,885.78	\$15,576,763.82	\$20,999,953.54	\$19,724,854.73	\$13,663,919.04
TRANSMISSION SERVICE	\$1,441,037.84	\$1,610,279.14	\$1,939,328.74	\$2,468,954.27	\$3,064,895.41	\$3,468,248.37	\$2,628,362.82
UPLIFT	\$16,913.72	\$84,097.69	\$1,071,525.17	\$80,174.48	\$84,447.72	\$57,202.43	\$9,962.72
RESIDUALS	(\$226,915.17)	(\$285,070.87)	(\$705,475.04)	(\$605,241.14)	(\$760,809.12)	(\$278,596.73)	(\$164,162.62)
ANCILLARY SERVICES	\$1,124,901.08	\$1,163,888.22	\$518,934.66	\$1,201,703.55	\$1,542,252.99	\$1,494,868.78	\$1,381,552.30
TCC	\$1,249,755.60	\$1,812,701.77	\$1,876,019.61	\$2,907,987.52	\$3,706,454.20	\$4,492,384.44	\$3,094,836.15
	21	22	23	24	25	26	27
ENERGY	\$12,824,035.59	\$10,888,950.56	\$9,231,165.19	\$7,067,860.53	\$5,341,164.35	\$10,037,239.02	\$9,957,755.25
TRANSMISSION SERVICE	\$2,329,429.72	\$1,988,417.46	\$1,837,498.68	\$1,851,903.64	\$1,601,363.53	\$2,200,309.87	\$1,765,866.19
UPLIFT	\$52,929.27	\$7,617.51	\$2,755.68	\$22,546.31	\$36,455.20	\$35,440.12	\$27,551.72
RESIDUALS	(\$210,366.99)	(\$304,153.67)	(\$228,932.27)	(\$64,843.41)	(\$102,107.84)	(\$163,759.38)	(\$363,285.55)
ANCILLARY SERVICES	\$1,260,777.62	\$1,181,444.99	\$1,129,293.10	\$1,077,510.81	\$1,004,332.68	\$1,190,204.10	\$1,126,461.36
TCC	\$2,707,181.66	\$2,144,444.52	\$1,881,529.20	\$2,033,463.79	\$1,673,663.81	\$2,571,013.03	\$1,754,089.52
	28	29	30	31			
ENERGY	\$10,132,099.33	\$10,945,759.22	\$9,251,244.87	\$7,044,571.78			
TRANSMISSION SERVICE	\$2,203,468.11	\$1,886,353.42	\$1,920,860.51	\$1,414,257.27			
UPLIFT	\$22,036.26	\$18,012.49	\$11,920.76	\$21,929.54			
RESIDUALS	(\$151,150.59)	(\$227,706.93)	(\$230,186.25)	(\$194,972.30)			
ANCILLARY SERVICES	\$1,191,828.59	\$1,175,506.57	\$1,177,455.32	\$1,077,826.64			
TCC	\$2,615,259.43	\$1,901,927.28	\$2,036,912.39	\$1,149,510.17			

