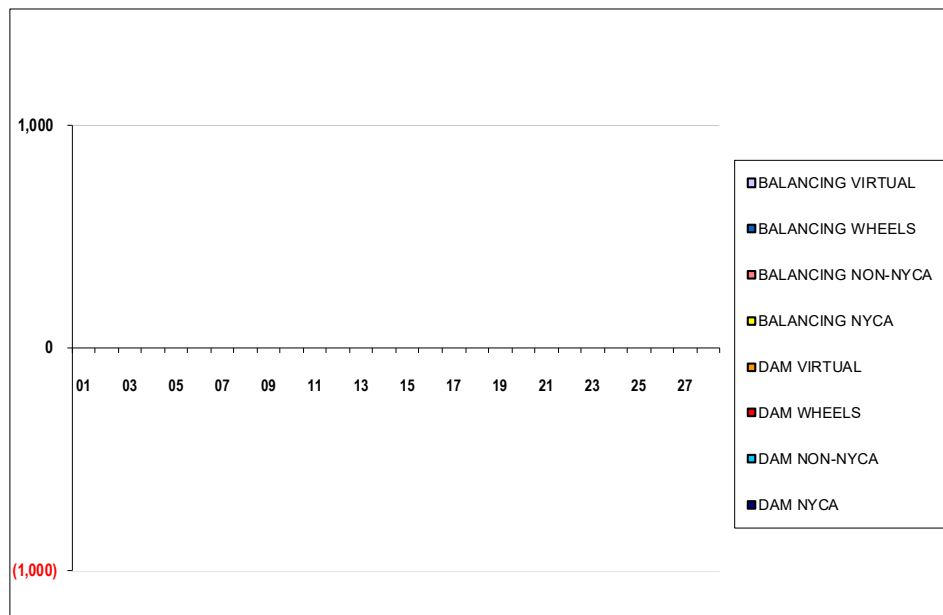


SETTLEMENTS REPORT
February 2022 Close-Out Settlement
November 7, 2022

Close-Out Settlement – Market Supply Delta Analysis

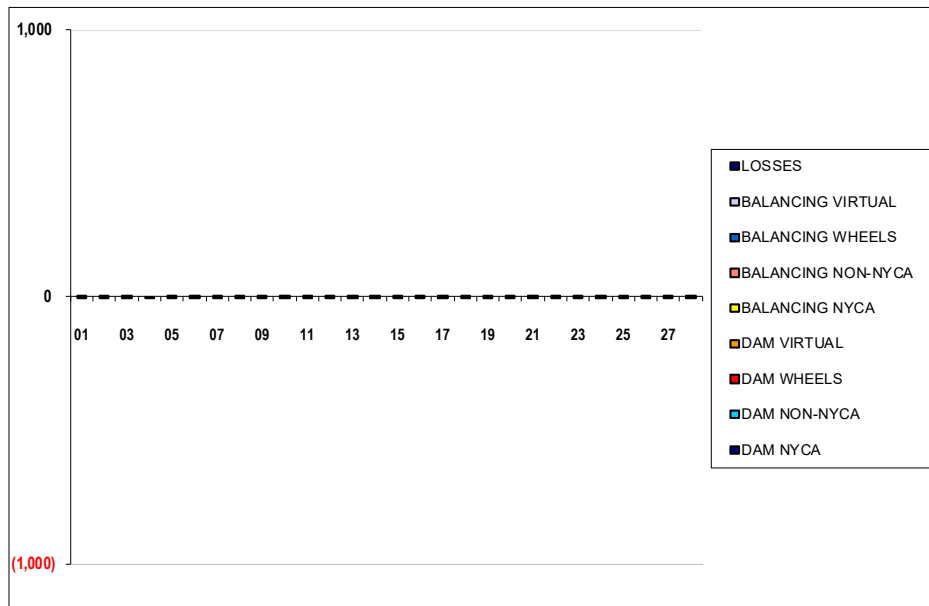
	MONDAY	TUESDAY	WEDNESDAY	THURSDAY	FRIDAY	SATURDAY	SUNDAY
		1	2	3	4	5	6
DAM NYCA		0	0	0	0	0	0
DAM NON-NYCA		0	0	0	0	0	0
DAM WHEELS		0	0	0	0	0	0
DAM VIRTUAL		0	0	0	0	0	0
BALANCING NYCA		0	0	0	0	0	0
BALANCING NON-NYCA		0	0	0	0	0	0
BALANCING WHEELS		0	0	0	0	0	0
BALANCING VIRTUAL		0	0	0	0	0	0
	7	8	9	10	11	12	13
DAM NYCA	0	0	0	0	0	0	0
DAM NON-NYCA	0	0	0	0	0	0	0
DAM WHEELS	0	0	0	0	0	0	0
DAM VIRTUAL	0	0	0	0	0	0	0
BALANCING NYCA	0	0	0	0	0	0	0
BALANCING NON-NYCA	0	0	0	0	0	0	0
BALANCING WHEELS	0	0	0	0	0	0	0
BALANCING VIRTUAL	0	0	0	0	0	0	0
	14	15	16	17	18	19	20
DAM NYCA	0	0	0	0	0	0	0
DAM NON-NYCA	0	0	0	0	0	0	0
DAM WHEELS	0	0	0	0	0	0	0
DAM VIRTUAL	0	0	0	0	0	0	0
BALANCING NYCA	0	0	0	0	0	0	0
BALANCING NON-NYCA	0	0	0	0	0	0	0
BALANCING WHEELS	0	0	0	0	0	0	0
BALANCING VIRTUAL	0	0	0	0	0	0	0
	21	22	23	24	25	26	27
DAM NYCA	0	0	0	0	0	0	0
DAM NON-NYCA	0	0	0	0	0	0	0
DAM WHEELS	0	0	0	0	0	0	0
DAM VIRTUAL	0	0	0	0	0	0	0
BALANCING NYCA	0	0	0	0	0	0	0
BALANCING NON-NYCA	0	0	0	0	0	0	0
BALANCING WHEELS	0	0	0	0	0	0	0
BALANCING VIRTUAL	0	0	0	0	0	0	0
	28						
DAM NYCA	0						
DAM NON-NYCA	0						
DAM WHEELS	0						
DAM VIRTUAL	0						
BALANCING NYCA	0						
BALANCING NON-NYCA	0						
BALANCING WHEELS	0						
BALANCING VIRTUAL	0						



SETTLEMENTS REPORT
February 2022 Close-Out Settlement
November 7, 2022

Close-Out Settlement – Market Withdrawals Delta Analysis

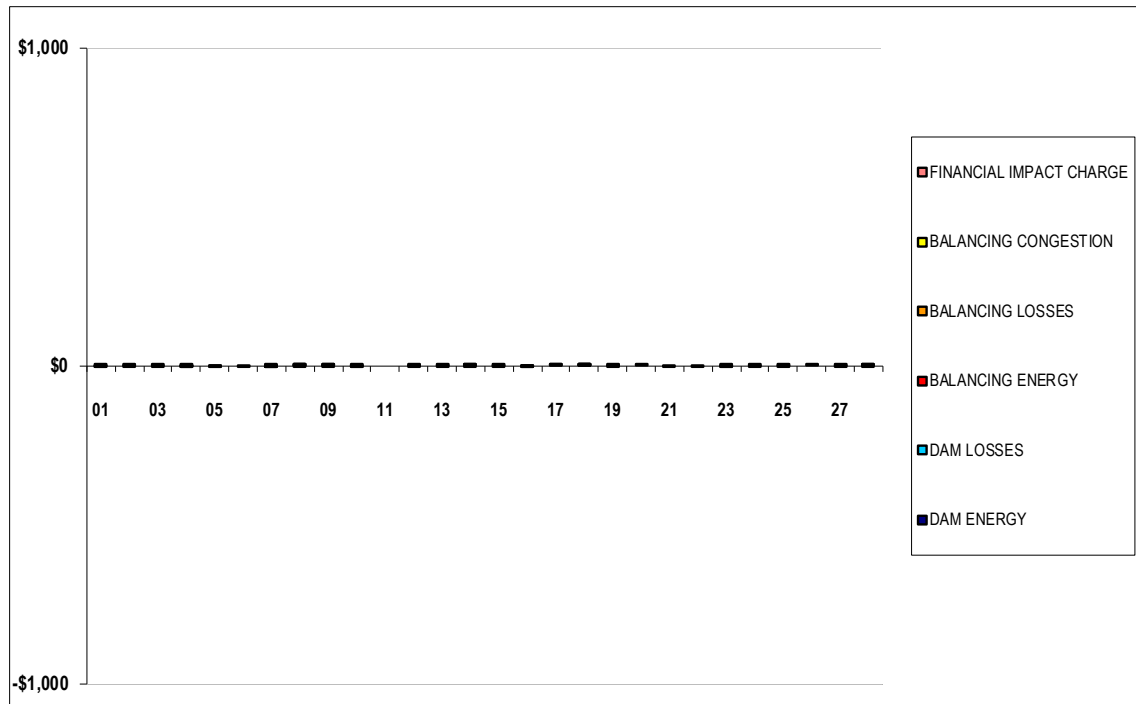
	MONDAY	TUESDAY	WEDNESDAY	THURSDAY	FRIDAY	SATURDAY	SUNDAY
		1	2	3	4	5	6
DAM NYCA		0	0	0	0	0	0
DAM NON-NYCA		0	0	0	0	0	0
DAM WHEELS		0	0	0	0	0	0
DAM VIRTUAL		0	0	0	0	0	0
BALANCING NYCA		(0)	0	0	(0)	0	0
BALANCING NON-NYCA		0	0	0	0	0	0
BALANCING WHEELS		0	0	0	0	0	0
BALANCING VIRTUAL		0	0	0	0	0	0
UFE/LOSSES		0	(0)	(0)	0	(0)	(0)
	7	8	9	10	11	12	13
DAM NYCA	0	0	0	0	0	0	0
DAM NON-NYCA	0	0	0	0	0	0	0
DAM WHEELS	0	0	0	0	0	0	0
DAM VIRTUAL	0	0	0	0	0	0	0
BALANCING NYCA	0	(0)	(0)	(0)	0	(0)	(0)
BALANCING NON-NYCA	0	0	0	0	0	0	0
BALANCING WHEELS	0	0	0	0	0	0	0
BALANCING VIRTUAL	0	0	0	0	0	0	0
UFE/LOSSES	(0)	0	0	0	(0)	0	0
	14	15	16	17	18	19	20
DAM NYCA	0	0	0	0	0	0	0
DAM NON-NYCA	0	0	0	0	0	0	0
DAM WHEELS	0	0	0	0	0	0	0
DAM VIRTUAL	0	0	0	0	0	0	0
BALANCING NYCA	(0)	(0)	(0)	(0)	(0)	(0)	0
BALANCING NON-NYCA	0	0	0	0	0	0	0
BALANCING WHEELS	0	0	0	0	0	0	0
BALANCING VIRTUAL	0	0	0	0	0	0	0
UFE/LOSSES	0	0	0	0	0	0	(0)
	21	22	23	24	25	26	27
DAM NYCA	0	0	0	0	0	0	0
DAM NON-NYCA	0	0	0	0	0	0	0
DAM WHEELS	0	0	0	0	0	0	0
DAM VIRTUAL	0	0	0	0	0	0	0
BALANCING NYCA	0	(0)	0	0	(0)	(0)	0
BALANCING NON-NYCA	0	0	0	0	0	0	0
BALANCING WHEELS	0	0	0	0	0	0	0
BALANCING VIRTUAL	0	0	0	0	0	0	0
UFE/LOSSES	(0)	0	(0)	(0)	0	0	(0)
	28						
DAM NYCA	0						
DAM NON-NYCA	0						
DAM WHEELS	0						
DAM VIRTUAL	0						
BALANCING NYCA	0						
BALANCING NON-NYCA	0						
BALANCING WHEELS	0						
BALANCING VIRTUAL	0						
UFE/LOSSES	(0)						



SETTLEMENTS REPORT
February 2022 Close-Out Settlement
November 7, 2022

Close-Out Settlement – Market Residuals Delta Analysis

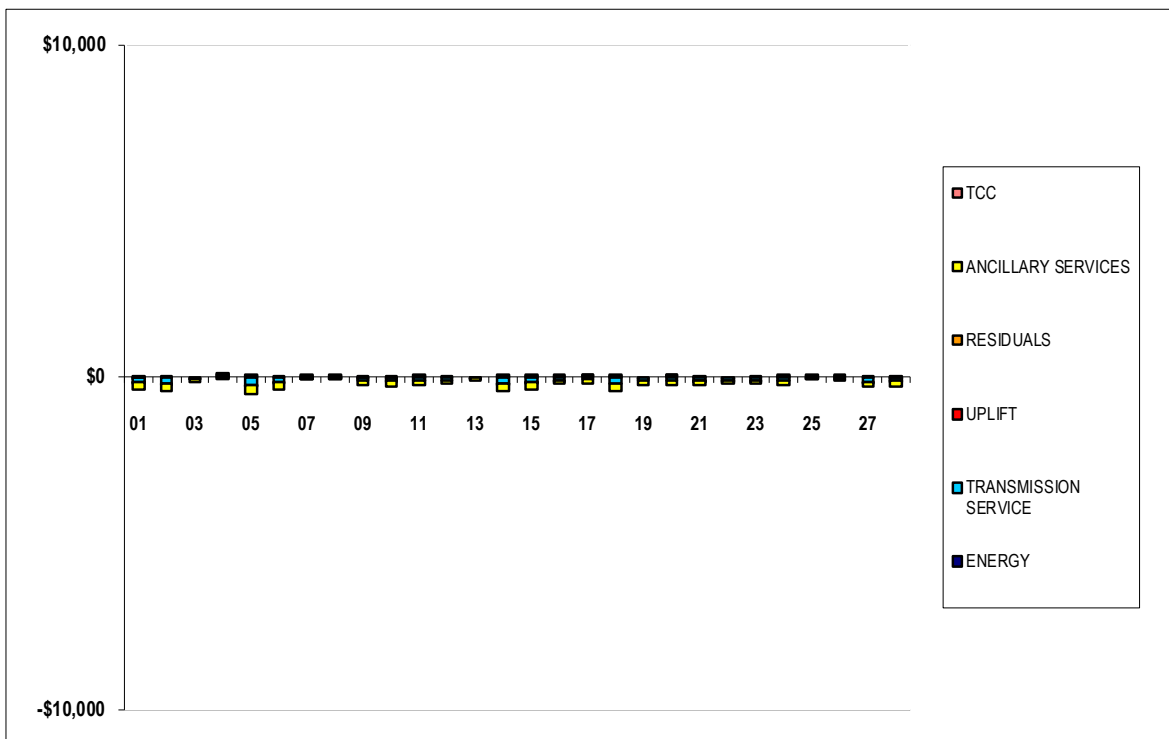
	MONDAY	TUESDAY	WEDNESDAY	THURSDAY	FRIDAY	SATURDAY	SUNDAY
		1	2	3	4	5	6
DAM ENERGY		(\$0.01)	\$0.00	(\$0.01)	(\$0.01)	\$0.00	\$0.00
DAM LOSSES		\$0.00	\$0.01	\$0.00	\$0.00	(\$0.01)	\$0.00
BALANCING ENERGY		\$0.00	\$0.00	\$0.00	\$0.01	\$0.00	\$0.00
BALANCING LOSSES		\$0.00	\$0.00	\$0.01	\$0.00	(\$0.01)	\$0.00
BALANCING CONGESTION		\$0.01	\$0.00	\$0.00	(\$0.01)	\$0.00	\$0.00
FINANCIAL IMPACT CHARGE		(\$0.02)	(\$0.04)	\$0.00	(\$0.07)	\$0.00	(\$0.03)
	7	8	9	10	11	12	13
DAM ENERGY	(\$0.01)	\$0.00	\$0.00	(\$0.01)	\$0.00	\$0.01	\$0.00
DAM LOSSES	(\$0.01)	(\$0.01)	\$0.01	\$0.00	\$0.00	(\$0.01)	(\$0.01)
BALANCING ENERGY	\$0.00	\$0.01	\$0.01	\$0.01	\$0.00	\$0.00	\$0.00
BALANCING LOSSES	(\$0.01)	\$0.00	(\$0.01)	\$0.00	\$0.00	\$0.00	\$0.00
BALANCING CONGESTION	\$0.01	\$0.01	\$0.00	\$0.00	\$0.00	\$0.00	\$0.01
FINANCIAL IMPACT CHARGE	(\$0.02)	\$0.02	\$0.00	(\$0.01)	\$0.00	\$0.00	\$0.00
	14	15	16	17	18	19	20
DAM ENERGY	\$0.00	\$0.00	\$0.00	\$0.00	\$0.01	\$0.01	\$0.00
DAM LOSSES	\$0.00	\$0.00	\$0.00	\$0.01	\$0.00	(\$0.01)	\$0.00
BALANCING ENERGY	(\$0.01)	\$0.00	(\$0.01)	\$0.00	\$0.01	\$0.00	\$0.00
BALANCING LOSSES	\$0.01	(\$0.01)	(\$0.01)	\$0.00	\$0.01	\$0.00	\$0.00
BALANCING CONGESTION	\$0.01	\$0.00	\$0.00	\$0.00	\$0.01	\$0.00	\$0.01
FINANCIAL IMPACT CHARGE	\$0.00	\$0.02	(\$0.02)	\$0.01	\$0.00	\$0.00	\$0.00
	21	22	23	24	25	26	27
DAM ENERGY	(\$0.01)	\$0.00	\$0.00	\$0.01	\$0.00	\$0.00	\$0.00
DAM LOSSES	\$0.00	\$0.00	\$0.01	\$0.00	\$0.00	\$0.00	\$0.00
BALANCING ENERGY	\$0.00	\$0.00	\$0.00	\$0.00	\$0.00	\$0.00	\$0.00
BALANCING LOSSES	\$0.00	\$0.00	(\$0.01)	\$0.00	(\$0.01)	\$0.00	\$0.01
BALANCING CONGESTION	\$0.00	\$0.00	(\$0.01)	\$0.00	\$0.00	\$0.00	\$0.00
FINANCIAL IMPACT CHARGE	\$0.00	(\$0.03)	\$0.00	(\$0.01)	\$0.01	\$0.09	(\$0.05)
	28						
DAM ENERGY	\$0.00						
DAM LOSSES	\$0.01						
BALANCING ENERGY	\$0.00						
BALANCING LOSSES	\$0.00						
BALANCING CONGESTION	\$0.01						
FINANCIAL IMPACT CHARGE	(\$0.01)						



SETTLEMENTS REPORT
February 2022 Close-Out Settlement
November 7, 2022

Close-Out Settlement – Market Costs Delta Analysis

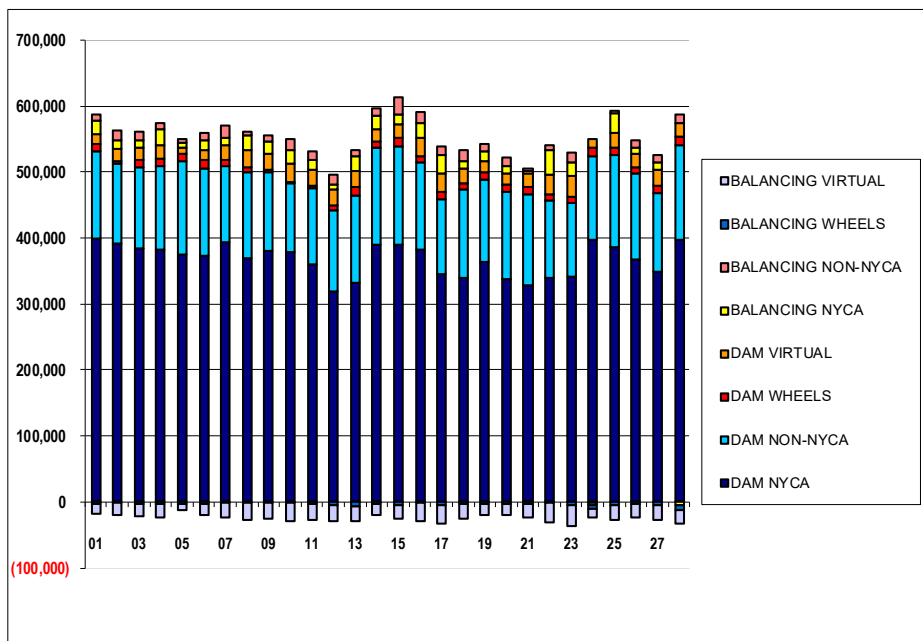
	MONDAY	TUESDAY	WEDNESDAY	THURSDAY	FRIDAY	SATURDAY	SUNDAY
		1	2	3	4	5	6
ENERGY		(\$0.34)	\$0.27	(\$0.18)	\$0.06	\$0.12	\$0.06
TRANSMISSION SERVICE		(\$166.25)	(\$189.01)	(\$70.83)	\$51.55	(\$237.43)	(\$170.55)
UPLIFT		\$0.01	\$0.00	\$0.00	\$0.00	\$0.01	\$0.00
RESIDUALS		(\$0.02)	(\$0.03)	\$0.00	(\$0.08)	(\$0.02)	(\$0.03)
ANCILLARY SERVICES		(\$199.84)	(\$227.21)	(\$85.15)	\$61.95	(\$285.41)	(\$204.99)
TCC		\$0.00	\$0.00	\$0.00	\$0.00	\$0.00	\$0.00
	7	8	9	10	11	12	13
ENERGY	\$0.11	\$0.15	(\$0.15)	(\$0.08)	\$0.11	\$0.31	(\$0.19)
TRANSMISSION SERVICE	(\$34.63)	(\$28.21)	(\$105.91)	(\$124.86)	(\$107.55)	(\$96.35)	(\$44.63)
UPLIFT	\$0.01	\$0.00	\$0.00	\$0.01	\$0.00	\$0.00	(\$0.02)
RESIDUALS	(\$0.04)	\$0.03	\$0.01	(\$0.01)	\$0.00	\$0.00	\$0.00
ANCILLARY SERVICES	(\$41.62)	(\$33.92)	(\$127.31)	(\$150.07)	(\$129.27)	(\$115.82)	(\$53.64)
TCC	\$0.00	\$0.00	\$0.00	\$0.00	\$0.00	\$0.00	\$0.00
	14	15	16	17	18	19	20
ENERGY	\$0.27	\$0.11	\$0.55	\$0.07	\$0.35	(\$0.05)	\$0.18
TRANSMISSION SERVICE	(\$192.59)	(\$177.40)	(\$95.63)	(\$83.30)	(\$191.45)	(\$110.55)	(\$107.13)
UPLIFT	(\$0.01)	(\$0.01)	\$0.01	\$0.01	\$0.00	\$0.00	\$0.01
RESIDUALS	\$0.01	\$0.01	(\$0.04)	\$0.02	\$0.04	\$0.00	\$0.01
ANCILLARY SERVICES	(\$231.51)	(\$213.24)	(\$114.96)	(\$100.13)	(\$230.13)	(\$132.88)	(\$128.78)
TCC	\$0.00	\$0.00	\$0.00	\$0.00	\$0.00	\$0.00	\$0.00
	21	22	23	24	25	26	27
ENERGY	\$0.37	(\$0.13)	\$0.38	\$0.14	(\$0.23)	\$0.39	\$0.15
TRANSMISSION SERVICE	(\$108.29)	(\$98.92)	(\$90.35)	(\$108.92)	\$6.56	(\$49.49)	(\$137.38)
UPLIFT	(\$0.01)	\$0.00	\$0.00	\$0.01	(\$0.01)	\$0.00	\$0.00
RESIDUALS	(\$0.01)	(\$0.03)	(\$0.01)	\$0.00	\$0.00	\$0.09	(\$0.04)
ANCILLARY SERVICES	(\$130.16)	(\$118.91)	(\$108.60)	(\$130.93)	\$7.89	(\$59.49)	(\$165.13)
TCC	\$0.00	\$0.00	\$0.00	\$0.00	\$0.00	\$0.00	\$0.00
	28						
ENERGY	(\$0.24)						
TRANSMISSION SERVICE	(\$134.21)						
UPLIFT	(\$0.01)						
RESIDUALS	\$0.01						
ANCILLARY SERVICES	(\$161.33)						
TCC	\$0.00						



SETTLEMENTS REPORT
February 2022 Close-Out Settlement
November 7, 2022

4-Month Settlement Adjustment – Market Supply Analysis

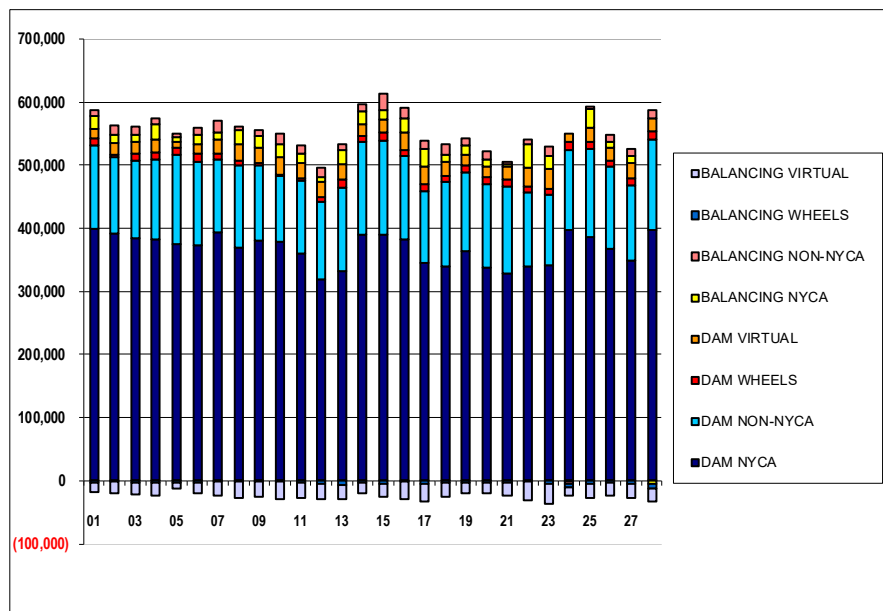
	MONDAY	TUESDAY	WEDNESDAY	THURSDAY	FRIDAY	SATURDAY	SUNDAY
		1	2	3	4	5	6
DAM NYCA		398,522	391,394	384,765	382,952	375,074	372,988
DAM NON-NYCA		132,987	120,492	121,534	125,633	141,511	133,060
DAM WHEELS		10,734	4,601	12,601	11,131	10,715	11,999
DAM VIRTUAL		15,661	18,444	18,316	20,334	10,380	15,527
BALANCING NYCA		19,520	12,664	10,192	25,458	6,594	14,596
BALANCING NON-NYCA		8,989	15,436	13,396	8,043	5,242	11,670
BALANCING WHEELS		(2,632)	(1,707)	(3,109)	(3,472)	(2,315)	(3,599)
BALANCING VIRTUAL		(15,661)	(18,444)	(18,316)	(20,334)	(10,380)	(15,527)
	7	8	9	10	11	12	13
DAM NYCA	394,128	369,592	380,788	378,637	360,364	318,591	332,729
DAM NON-NYCA	115,489	130,113	119,444	105,245	116,108	123,318	131,894
DAM WHEELS	9,071	8,179	2,400	1,456	3,040	7,747	13,231
DAM VIRTUAL	22,077	26,272	25,043	28,321	24,667	23,139	23,535
BALANCING NYCA	11,698	21,330	18,044	18,822	14,007	8,682	22,709
BALANCING NON-NYCA	17,360	5,244	9,943	16,863	13,784	14,123	8,814
BALANCING WHEELS	(1,871)	(829)	(300)	(1,456)	(3,025)	(5,492)	(6,330)
BALANCING VIRTUAL	(22,077)	(26,272)	(25,043)	(28,321)	(24,667)	(23,139)	(23,535)
	14	15	16	17	18	19	20
DAM NYCA	389,283	390,463	382,019	346,097	340,554	363,447	338,297
DAM NON-NYCA	147,383	148,548	132,206	113,304	132,854	126,049	131,895
DAM WHEELS	9,794	13,625	10,144	11,019	8,769	10,980	10,720
DAM VIRTUAL	17,627	19,866	27,152	28,394	23,152	16,326	16,842
BALANCING NYCA	20,490	15,421	23,547	26,961	11,795	13,710	10,585
BALANCING NON-NYCA	12,481	24,879	16,141	13,399	15,460	11,357	13,655
BALANCING WHEELS	(2,519)	(5,225)	(1,826)	(5,278)	(2,584)	(3,780)	(3,520)
BALANCING VIRTUAL	(17,627)	(19,866)	(27,152)	(28,394)	(23,152)	(16,326)	(16,842)
	21	22	23	24	25	26	27
DAM NYCA	328,775	339,897	340,878	396,811	386,758	367,753	348,411
DAM NON-NYCA	137,936	117,852	111,990	128,099	139,018	130,016	119,596
DAM WHEELS	10,672	9,008	9,077	12,207	11,471	10,010	11,227
DAM VIRTUAL	20,031	29,833	31,831	13,391	22,685	20,048	24,044
BALANCING NYCA	3,447	36,425	20,994	(590)	29,062	8,931	10,751
BALANCING NON-NYCA	5,023	8,605	15,498	(3,834)	4,265	10,727	11,883
BALANCING WHEELS	(3,472)	(1,953)	(4,132)	(5,732)	(4,371)	(2,810)	(4,027)
BALANCING VIRTUAL	(20,031)	(29,833)	(31,831)	(13,391)	(22,685)	(20,048)	(24,044)
	28						
DAM NYCA	397,270						
DAM NON-NYCA	143,397						
DAM WHEELS	13,495						
DAM VIRTUAL	20,324						
BALANCING NYCA	(5,531)						
BALANCING NON-NYCA	13,499						
BALANCING WHEELS	(6,295)						
BALANCING VIRTUAL	(20,324)						



SETTLEMENTS REPORT
February 2022 Close-Out Settlement
November 7, 2022

Close-Out Settlement – Market Supply Analysis

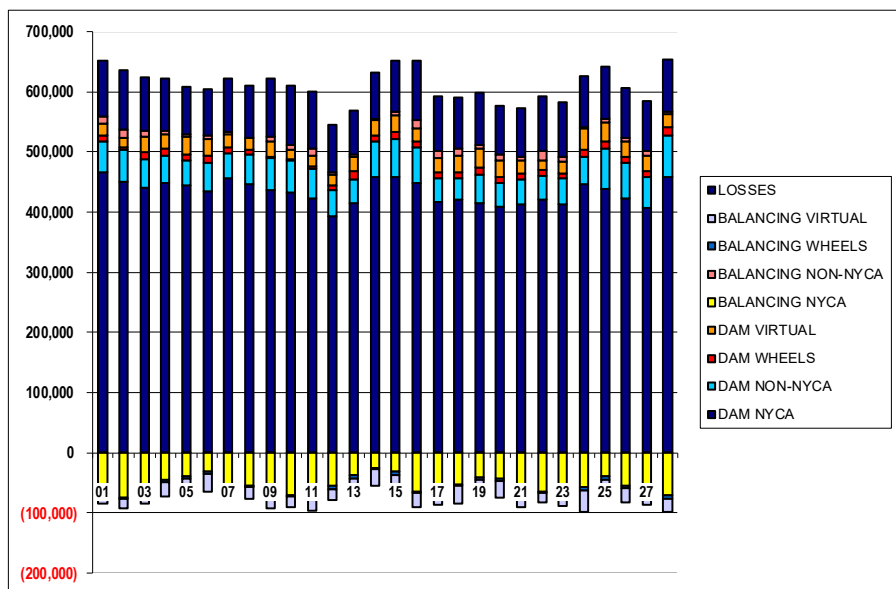
	MONDAY	TUESDAY	WEDNESDAY	THURSDAY	FRIDAY	SATURDAY	SUNDAY
		1	2	3	4	5	6
DAM NYCA		398,522	391,394	384,765	382,952	375,074	372,988
DAM NON-NYCA		132,987	120,492	121,534	125,633	141,511	133,060
DAM WHEELS		10,734	4,601	12,601	11,131	10,715	11,999
DAM VIRTUAL		15,661	18,444	18,316	20,334	10,380	15,527
BALANCING NYCA		19,520	12,664	10,192	25,458	6,594	14,596
BALANCING NON-NYCA		8,989	15,436	13,396	8,043	5,242	11,670
BALANCING WHEELS		(2,632)	(1,707)	(3,109)	(3,472)	(2,315)	(3,599)
BALANCING VIRTUAL		(15,661)	(18,444)	(18,316)	(20,334)	(10,380)	(15,527)
	7	8	9	10	11	12	13
DAM NYCA	394,128	369,592	380,788	378,637	360,364	318,591	332,729
DAM NON-NYCA	115,489	130,113	119,444	105,245	116,108	123,318	131,894
DAM WHEELS	9,071	8,179	2,400	1,456	3,040	7,747	13,231
DAM VIRTUAL	22,077	26,272	25,043	28,321	24,667	23,139	23,535
BALANCING NYCA	11,698	21,330	18,044	18,822	14,007	8,682	22,709
BALANCING NON-NYCA	17,360	5,244	9,943	16,863	13,784	14,123	8,814
BALANCING WHEELS	(1,871)	(829)	(300)	(1,456)	(3,025)	(5,492)	(6,330)
BALANCING VIRTUAL	(22,077)	(26,272)	(25,043)	(28,321)	(24,667)	(23,139)	(23,535)
	14	15	16	17	18	19	20
DAM NYCA	389,283	390,463	382,019	346,097	340,554	363,447	338,297
DAM NON-NYCA	147,383	148,548	132,206	113,304	132,854	126,049	131,895
DAM WHEELS	9,794	13,625	10,144	11,019	8,769	10,980	10,720
DAM VIRTUAL	17,627	19,866	27,152	28,394	23,152	16,326	16,842
BALANCING NYCA	20,490	15,421	23,547	26,961	11,795	13,710	10,585
BALANCING NON-NYCA	12,481	24,879	16,141	13,399	15,460	11,357	13,655
BALANCING WHEELS	(2,519)	(5,225)	(1,826)	(5,278)	(2,584)	(3,780)	(3,520)
BALANCING VIRTUAL	(17,627)	(19,866)	(27,152)	(28,394)	(23,152)	(16,326)	(16,842)
	21	22	23	24	25	26	27
DAM NYCA	328,775	339,897	340,878	396,811	386,758	367,753	348,411
DAM NON-NYCA	137,936	117,852	111,990	128,099	139,018	130,016	119,596
DAM WHEELS	10,672	9,008	9,077	12,207	11,471	10,010	11,227
DAM VIRTUAL	20,031	29,833	31,831	13,391	22,685	20,048	24,044
BALANCING NYCA	3,447	36,425	20,994	(590)	29,062	8,931	10,751
BALANCING NON-NYCA	5,023	8,605	15,498	(3,834)	4,265	10,727	11,883
BALANCING WHEELS	(3,472)	(1,953)	(4,132)	(5,732)	(4,371)	(2,810)	(4,027)
BALANCING VIRTUAL	(20,031)	(29,833)	(31,831)	(13,391)	(22,685)	(20,048)	(24,044)
	28						
DAM NYCA	397,270						
DAM NON-NYCA	143,397						
DAM WHEELS	13,495						
DAM VIRTUAL	20,324						
BALANCING NYCA	(5,531)						
BALANCING NON-NYCA	13,499						
BALANCING WHEELS	(6,295)						
BALANCING VIRTUAL	(20,324)						



SETTLEMENTS REPORT
February 2022 Close-Out Settlement
November 7, 2022

4-Month Settlement Adjustment – Market Withdrawals Analysis

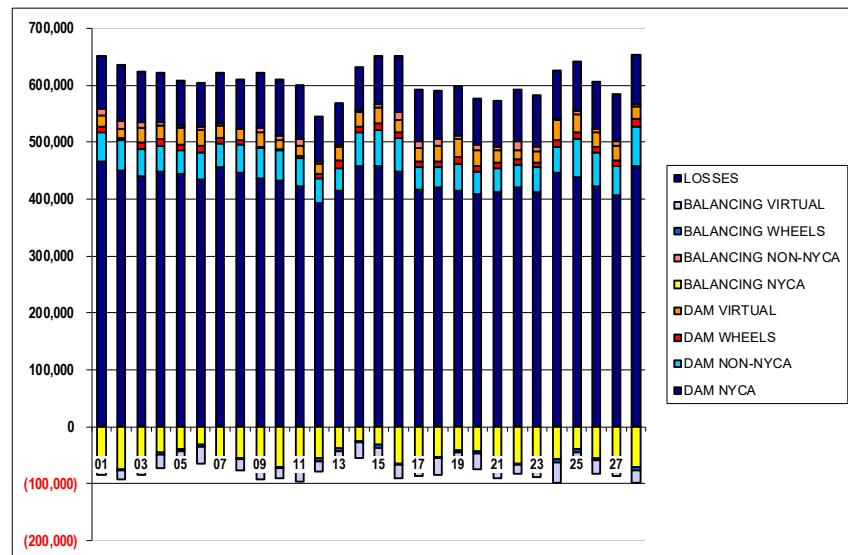
	MONDAY	TUESDAY	WEDNESDAY	THURSDAY	FRIDAY	SATURDAY	SUNDAY
		1	2	3	4	5	6
DAM NYCA		466,294	450,897	440,226	447,826	443,748	434,028
DAM NON-NYCA		50,608	51,553	46,763	46,240	41,042	47,056
DAM WHEELS		10,734	4,601	12,601	11,131	10,715	11,999
DAM VIRTUAL		19,067	15,688	26,335	23,196	29,463	28,306
BALANCING NYCA		(62,137)	(74,455)	(54,050)	(45,638)	(39,787)	(31,707)
BALANCING NON-NYCA		11,749	14,165	8,416	5,678	3,722	5,135
BALANCING WHEELS		(2,632)	(1,707)	(3,109)	(3,472)	(2,315)	(3,599)
BALANCING VIRTUAL		(19,067)	(15,688)	(26,335)	(23,196)	(29,463)	(28,306)
UFE/LOSSES		93,506	97,825	88,532	87,981	79,697	77,801
	7	8	9	10	11	12	13
DAM NYCA	456,103	445,403	437,154	431,938	422,484	392,363	414,089
DAM NON-NYCA	42,177	49,170	52,275	53,605	50,067	44,074	40,969
DAM WHEELS	9,071	8,179	2,400	1,456	3,040	7,747	13,231
DAM VIRTUAL	21,397	19,775	25,596	16,884	18,163	17,595	22,466
BALANCING NYCA	(51,971)	(55,030)	(65,750)	(71,456)	(75,259)	(54,484)	(37,518)
BALANCING NON-NYCA	4,960	(32)	8,674	8,344	10,819	4,355	4,270
BALANCING WHEELS	(1,871)	(829)	(300)	(1,456)	(3,025)	(5,492)	(6,330)
BALANCING VIRTUAL	(21,397)	(19,775)	(25,596)	(16,884)	(18,163)	(17,595)	(22,466)
UFE/LOSSES	87,405	86,768	95,867	97,135	96,151	78,407	74,335
	14	15	16	17	18	19	20
DAM NYCA	458,267	457,944	448,213	415,966	421,004	415,012	409,494
DAM NON-NYCA	58,632	62,360	58,702	39,860	35,921	47,118	38,477
DAM WHEELS	9,794	13,625	10,144	11,019	8,769	10,980	10,720
DAM VIRTUAL	26,481	27,282	22,777	22,479	28,286	31,801	27,461
BALANCING NYCA	(24,937)	(31,155)	(64,903)	(59,133)	(52,682)	(41,440)	(43,526)
BALANCING NON-NYCA	1,311	4,599	12,569	12,270	12,009	7,024	8,843
BALANCING WHEELS	(2,519)	(5,225)	(1,826)	(5,278)	(2,584)	(3,780)	(3,520)
BALANCING VIRTUAL	(26,481)	(27,282)	(22,777)	(22,479)	(28,286)	(31,801)	(27,461)
UFE/LOSSES	76,364	85,562	99,826	90,797	84,410	86,850	81,144
	21	22	23	24	25	26	27
DAM NYCA	412,060	420,875	412,595	445,478	438,609	423,432	407,691
DAM NON-NYCA	41,825	39,883	43,265	45,351	66,548	59,080	49,993
DAM WHEELS	10,672	9,008	9,077	12,207	11,471	10,010	11,227
DAM VIRTUAL	20,590	15,438	18,096	35,568	31,212	24,100	24,795
BALANCING NYCA	(65,648)	(65,464)	(66,023)	(57,356)	(39,801)	(55,146)	(57,526)
BALANCING NON-NYCA	6,647	15,949	9,175	1,755	6,725	5,830	6,912
BALANCING WHEELS	(3,472)	(1,953)	(4,132)	(5,732)	(4,371)	(2,810)	(4,027)
BALANCING VIRTUAL	(20,590)	(15,438)	(18,096)	(35,568)	(31,212)	(24,100)	(24,795)
UFE/LOSSES	80,297	91,536	90,348	85,258	87,023	84,231	83,571
	28						
DAM NYCA	457,226						
DAM NON-NYCA	70,477						
DAM WHEELS	13,495						
DAM VIRTUAL	21,303						
BALANCING NYCA	(70,760)						
BALANCING NON-NYCA	3,879						
BALANCING WHEELS	(6,295)						
BALANCING VIRTUAL	(21,303)						
UFE/LOSSES	87,813						



SETTLEMENTS REPORT
February 2022 Close-Out Settlement
November 7, 2022

Close-Out Settlement – Market Withdrawals Analysis

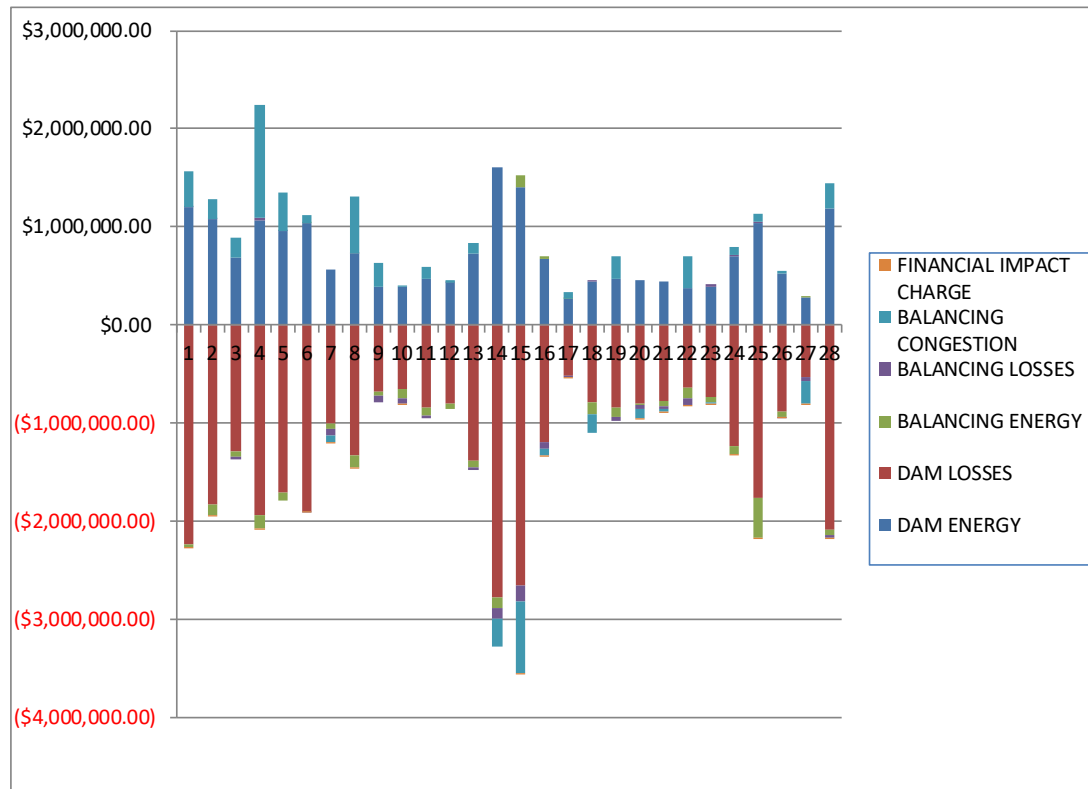
	MONDAY	TUESDAY	WEDNESDAY	THURSDAY	FRIDAY	SATURDAY	SUNDAY
		1	2	3	4	5	6
DAM NYCA		466,294	450,897	440,226	447,826	443,748	434,028
DAM NON-NYCA		50,608	51,553	46,763	46,240	41,042	47,056
DAM WHEELS		10,734	4,601	12,601	11,131	10,715	11,999
DAM VIRTUAL		19,067	15,888	26,335	23,196	29,463	28,306
BALANCING NYCA		(62,137)	(74,455)	(54,050)	(45,638)	(39,787)	(31,707)
BALANCING NON-NYCA		11,749	14,165	8,416	5,678	3,722	5,135
BALANCING WHEELS		(2,632)	(1,707)	(3,109)	(3,472)	(2,315)	(3,599)
BALANCING VIRTUAL		(19,067)	(15,688)	(26,335)	(23,196)	(29,463)	(28,306)
UFE/LOSSES		93,506	97,825	88,532	87,981	79,697	77,801
	7	8	9	10	11	12	13
DAM NYCA	456,103	445,403	437,154	431,938	422,484	392,363	414,089
DAM NON-NYCA	42,177	49,170	52,275	53,605	50,067	44,074	40,969
DAM WHEELS	9,071	8,179	2,400	1,456	3,040	7,747	13,231
DAM VIRTUAL	21,397	19,775	25,596	16,884	18,163	17,595	22,466
BALANCING NYCA	(51,971)	(55,030)	(65,750)	(71,456)	(75,259)	(54,484)	(37,518)
BALANCING NON-NYCA	4,960	(32)	8,674	8,344	10,819	4,355	4,270
BALANCING WHEELS	(1,871)	(829)	(300)	(1,456)	(3,025)	(5,492)	(6,330)
BALANCING VIRTUAL	(21,397)	(19,775)	(25,596)	(16,884)	(18,163)	(17,595)	(22,466)
UFE/LOSSES	87,405	86,768	95,867	97,135	96,151	78,407	74,335
	14	15	16	17	18	19	20
DAM NYCA	458,267	457,944	448,213	415,966	421,004	415,012	409,494
DAM NON-NYCA	58,632	62,360	58,702	39,860	35,921	47,118	38,477
DAM WHEELS	9,794	13,625	10,144	11,019	8,769	10,980	10,720
DAM VIRTUAL	26,481	27,282	22,777	22,479	28,286	31,801	27,461
BALANCING NYCA	(24,937)	(31,155)	(64,903)	(59,133)	(52,683)	(41,440)	(43,526)
BALANCING NON-NYCA	1,311	4,599	12,569	12,270	12,009	7,024	8,843
BALANCING WHEELS	(2,519)	(5,225)	(1,826)	(5,278)	(2,584)	(3,780)	(3,520)
BALANCING VIRTUAL	(26,481)	(27,282)	(22,777)	(22,479)	(28,286)	(31,801)	(27,461)
UFE/LOSSES	76,364	85,562	99,826	90,797	84,410	86,850	81,144
	21	22	23	24	25	26	27
DAM NYCA	412,060	420,875	412,595	445,478	438,609	423,432	407,691
DAM NON-NYCA	41,825	39,883	43,265	45,351	66,548	59,080	49,993
DAM WHEELS	10,672	9,008	9,077	12,207	11,471	10,010	11,227
DAM VIRTUAL	20,590	15,438	18,096	35,568	31,212	24,100	24,795
BALANCING NYCA	(65,648)	(65,464)	(66,023)	(57,356)	(39,801)	(55,146)	(37,526)
BALANCING NON-NYCA	6,647	15,949	9,175	1,755	6,725	5,830	6,912
BALANCING WHEELS	(3,472)	(1,953)	(4,132)	(5,732)	(4,371)	(2,810)	(4,027)
BALANCING VIRTUAL	(20,590)	(15,438)	(18,096)	(35,568)	(31,212)	(24,100)	(24,795)
UFE/LOSSES	80,297	91,536	90,348	85,258	87,023	84,231	83,571
	28						
DAM NYCA	457,226						
DAM NON-NYCA	70,477						
DAM WHEELS	13,495						
DAM VIRTUAL	21,303						
BALANCING NYCA	(70,760)						
BALANCING NON-NYCA	3,879						
BALANCING WHEELS	(6,295)						
BALANCING VIRTUAL	(21,303)						
UFE/LOSSES	87,813						



SETTLEMENTS REPORT
February 2022 Close-Out Settlement
November 7, 2022

4-Month Settlement Adjustment – Market Residuals Analysis

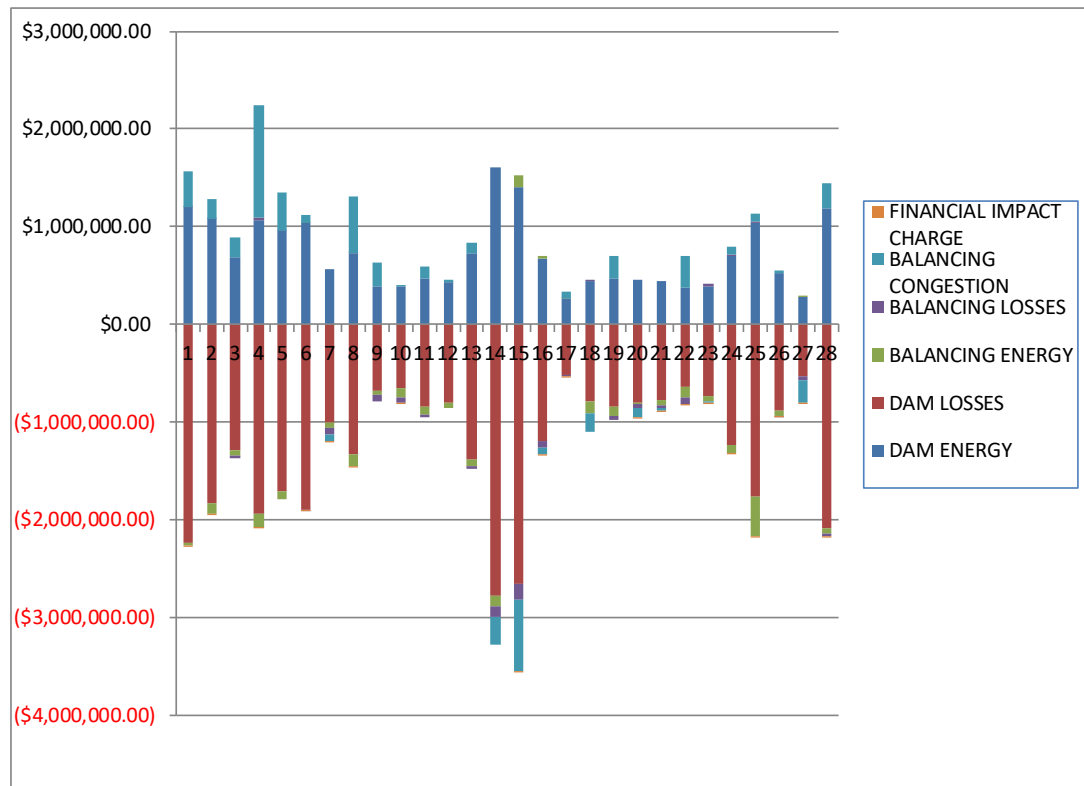
	MONDAY	TUESDAY	WEDNESDAY	THURSDAY	FRIDAY	SATURDAY	SUNDAY
		1	2	3	4	5	6
DAM ENERGY		\$1,198,067.48	\$1,077,013.69	\$693,758.53	\$1,066,542.83	\$959,004.58	\$1,034,337.30
DAM LOSSES		(\$2,236,345.74)	(\$1,831,329.98)	(\$1,282,815.27)	(\$1,932,826.69)	(\$1,705,892.86)	(\$1,898,994.70)
BALANCING ENERGY		(\$23,728.14)	(\$104,695.37)	(\$54,592.28)	(\$136,042.06)	(\$84,801.73)	\$5,424.40
BALANCING LOSSES		\$9,308.96	\$626.84	(\$29,755.88)	\$29,003.10	\$1,730.85	(\$3,284.52)
BALANCING CONGESTION		\$364,379.39	\$211,086.36	\$193,756.48	\$1,144,645.92	\$389,640.74	\$84,461.77
FINANCIAL IMPACT CHARGE		(\$2,090.12)	(\$5,433.73)	\$0.00	(\$7,546.10)	\$0.00	(\$62.56)
	7	8	9	10	11	12	13
DAM ENERGY	\$560,816.82	\$725,178.11	\$392,566.06	\$387,260.01	\$476,700.81	\$434,867.48	\$726,889.76
DAM LOSSES	(\$998,732.67)	(\$1,322,080.15)	(\$673,766.56)	(\$656,982.89)	(\$844,464.28)	(\$803,777.21)	(\$1,378,865.70)
BALANCING ENERGY	(\$64,364.32)	(\$121,343.18)	(\$43,733.83)	(\$86,534.07)	(\$79,922.69)	(\$51,459.57)	(\$74,172.87)
BALANCING LOSSES	(\$61,799.02)	\$6,118.38	(\$70,943.65)	(\$59,176.73)	(\$25,940.11)	\$2,170.40	(\$24,369.85)
BALANCING CONGESTION	(\$64,375.22)	\$577,723.22	\$243,495.86	\$18,644.78	\$111,710.56	\$25,036.45	\$106,941.75
FINANCIAL IMPACT CHARGE	(\$7,288.99)	(\$885.47)	\$0.00	(\$232.03)	\$0.00	\$0.00	\$0.00
	14	15	16	17	18	19	20
DAM ENERGY	\$1,612,651.94	\$1,402,215.68	\$667,144.72	\$273,518.11	\$437,976.75	\$476,859.21	\$456,333.99
DAM LOSSES	(\$2,774,956.49)	(\$2,660,309.49)	(\$1,196,386.75)	(\$519,305.10)	(\$782,926.09)	(\$839,800.16)	(\$799,481.56)
BALANCING ENERGY	(\$111,709.86)	\$127,727.78	\$40,453.57	\$548.31	(\$127,032.89)	(\$99,764.50)	(\$9,240.16)
BALANCING LOSSES	(\$107,846.15)	(\$149,521.21)	(\$58,231.72)	(\$7,923.36)	\$3,696.64	(\$42,504.37)	(\$50,510.46)
BALANCING CONGESTION	(\$287,340.47)	(\$731,667.52)	(\$75,970.46)	\$58,610.07	(\$194,005.56)	\$227,573.57	(\$94,208.43)
FINANCIAL IMPACT CHARGE	\$0.00	(\$913.10)	(\$1,105.10)	(\$11.46)	\$0.00	\$0.00	(\$163.32)
	21	22	23	24	25	26	27
DAM ENERGY	\$450,207.97	\$379,748.74	\$387,672.98	\$695,735.45	\$1,042,053.96	\$518,452.03	\$285,499.81
DAM LOSSES	(\$771,000.43)	(\$643,522.36)	(\$736,328.08)	(\$1,238,090.37)	(\$1,765,320.25)	(\$885,079.15)	(\$531,518.00)
BALANCING ENERGY	(\$60,633.72)	(\$107,637.17)	(\$55,873.26)	(\$82,490.12)	(\$395,843.69)	(\$44,373.05)	\$13,993.91
BALANCING LOSSES	(\$28,185.36)	(\$58,983.65)	\$27,362.58	\$24,758.43	\$5,250.63	(\$2,584.90)	(\$39,080.94)
BALANCING CONGESTION	(\$26,779.88)	\$321,663.94	(\$3,224.84)	\$71,678.13	\$91,536.97	\$38,052.41	(\$227,900.60)
FINANCIAL IMPACT CHARGE	(\$82.98)	(\$12.38)	(\$22.99)	(\$4.56)	(\$52.24)	(\$315.22)	(\$557.68)
	28						
DAM ENERGY	\$1,186,669.93						
DAM LOSSES	(\$2,083,443.70)						
BALANCING ENERGY	(\$52,730.87)						
BALANCING LOSSES	(\$26,283.96)						
BALANCING CONGESTION	\$254,903.22						
FINANCIAL IMPACT CHARGE	(\$39.92)						



SETTLEMENTS REPORT
February 2022 Close-Out Settlement
November 7, 2022

Close-Out Settlement – Market Residuals Analysis

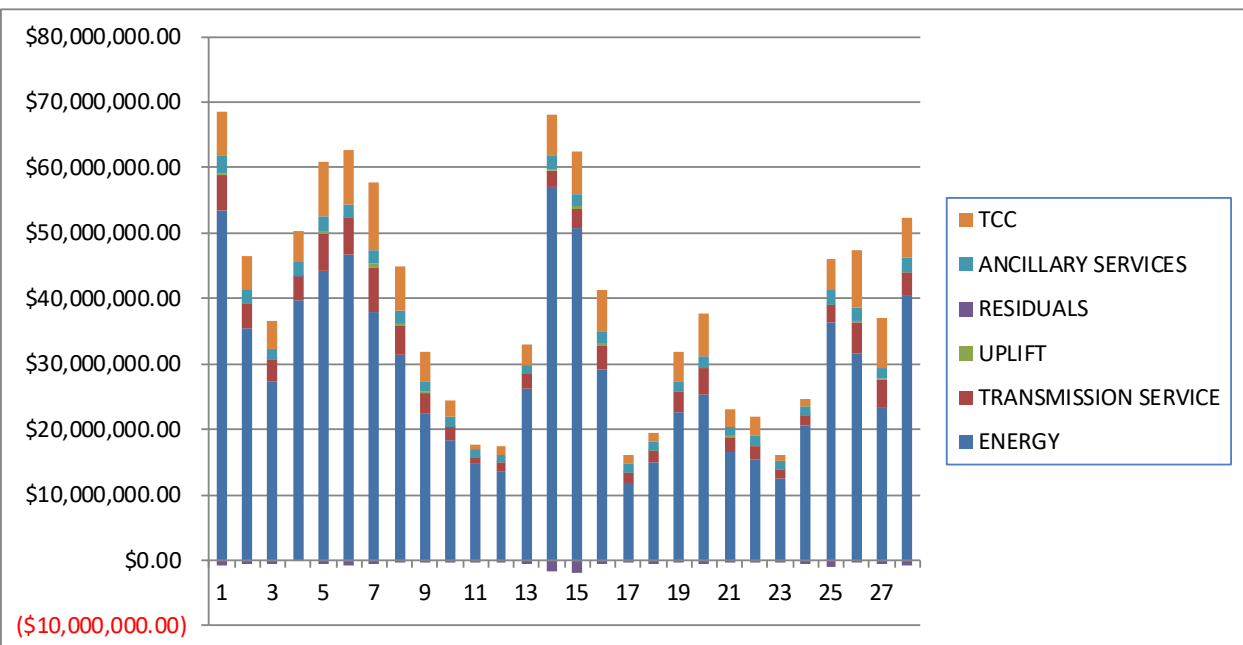
	MONDAY	TUESDAY	WEDNESDAY	THURSDAY	FRIDAY	SATURDAY	SUNDAY
		1	2	3	4	5	6
DAM ENERGY		\$1,198,067.47	\$1,077,013.69	\$693,758.52	\$1,066,542.82	\$959,004.58	\$1,034,337.30
DAM LOSSES		(\$2,236,345.74)	(\$1,831,329.97)	(\$1,282,815.27)	(\$1,932,826.69)	(\$1,705,892.87)	(\$1,898,994.70)
BALANCING ENERGY		(\$23,728.14)	(\$104,695.37)	(\$54,592.28)	(\$136,042.05)	(\$84,801.73)	\$5,424.40
BALANCING LOSSES		\$9,308.96	\$626.84	(\$29,755.87)	\$29,003.10	\$1,730.84	(\$3,284.52)
BALANCING CONGESTION		\$364,379.40	\$211,086.36	\$193,756.48	\$1,144,645.91	\$389,640.74	\$84,461.77
FINANCIAL IMPACT CHARGE		(\$2,090.14)	(\$5,433.77)	\$0.00	(\$7,546.17)	\$0.00	(\$62.59)
	7	8	9	10	11	12	13
DAM ENERGY	\$560,816.81	\$725,178.11	\$392,566.06	\$387,260.00	\$476,700.81	\$434,867.49	\$726,889.76
DAM LOSSES	(\$998,732.68)	(\$1,322,080.16)	(\$673,766.55)	(\$656,982.89)	(\$844,464.28)	(\$803,777.22)	(\$1,378,865.71)
BALANCING ENERGY	(\$64,364.32)	(\$121,343.17)	(\$43,733.82)	(\$86,534.06)	(\$79,922.69)	(\$51,459.57)	(\$74,172.87)
BALANCING LOSSES	(\$61,799.03)	\$6,118.38	(\$70,943.66)	(\$59,176.73)	(\$25,940.11)	\$2,170.40	(\$24,369.85)
BALANCING CONGESTION	(\$64,375.21)	\$577,723.23	\$243,495.86	\$18,644.78	\$111,710.56	\$25,036.45	\$106,941.76
FINANCIAL IMPACT CHARGE	(\$7,289.01)	(\$885.45)	\$0.00	(\$232.04)	\$0.00	\$0.00	\$0.00
	14	15	16	17	18	19	20
DAM ENERGY	\$1,612,651.94	\$1,402,215.68	\$667,144.72	\$273,518.11	\$437,976.76	\$476,859.22	\$456,333.99
DAM LOSSES	(\$2,774,956.49)	(\$2,660,309.49)	(\$1,196,386.75)	(\$519,305.09)	(\$782,926.09)	(\$839,800.17)	(\$799,481.56)
BALANCING ENERGY	(\$111,709.87)	\$127,727.78	\$40,453.56	\$548.31	(\$127,032.88)	(\$99,764.50)	(\$9,240.16)
BALANCING LOSSES	(\$107,846.14)	(\$149,521.22)	(\$58,231.73)	(\$7,923.36)	\$3,696.65	(\$42,504.37)	(\$50,510.46)
BALANCING CONGESTION	(\$287,340.46)	(\$731,667.52)	(\$75,970.46)	\$58,610.07	(\$194,005.55)	\$227,573.57	(\$94,208.42)
FINANCIAL IMPACT CHARGE	\$0.00	(\$913.08)	(\$1,105.12)	(\$11.45)	\$0.00	\$0.00	(\$163.32)
	21	22	23	24	25	26	27
DAM ENERGY	\$450,207.96	\$379,748.74	\$387,672.98	\$695,735.46	\$1,042,053.96	\$518,452.03	\$285,499.81
DAM LOSSES	(\$771,000.43)	(\$643,522.36)	(\$736,328.07)	(\$1,238,090.37)	(\$1,765,320.25)	(\$885,079.15)	(\$531,518.00)
BALANCING ENERGY	(\$60,633.72)	(\$107,637.17)	(\$55,873.26)	(\$82,490.12)	(\$395,843.69)	(\$44,373.05)	\$13,993.91
BALANCING LOSSES	(\$28,185.36)	(\$58,983.65)	\$27,362.57	\$24,758.43	\$5,250.62	(\$2,584.90)	(\$39,080.93)
BALANCING CONGESTION	(\$26,779.88)	\$321,663.94	(\$3,224.85)	\$71,678.13	\$91,536.97	\$38,052.41	(\$227,900.60)
FINANCIAL IMPACT CHARGE	(\$82.98)	(\$12.41)	(\$22.99)	(\$4.57)	(\$52.23)	(\$315.13)	(\$557.73)
	28						
DAM ENERGY	\$1,186,669.93						
DAM LOSSES	(\$2,083,443.69)						
BALANCING ENERGY	(\$52,730.87)						
BALANCING LOSSES	(\$26,283.96)						
BALANCING CONGESTION	\$254,903.23						
FINANCIAL IMPACT CHARGE	(\$39.93)						



SETTLEMENTS REPORT
February 2022 Close-Out Settlement
November 7, 2022

4-Month Settlement Adjustment – Market Costs Analysis

	MONDAY	TUESDAY	WEDNESDAY	THURSDAY	FRIDAY	SATURDAY	SUNDAY
		1	2	3	4	5	6
ENERGY		\$53,338,776.94	\$35,478,584.40	\$27,455,703.87	\$39,678,950.55	\$44,246,165.70	\$46,719,906.03
TRANSMISSION SERVICE		\$5,593,105.60	\$3,713,856.12	\$3,304,350.38	\$3,540,142.21	\$5,623,135.96	\$5,513,518.98
UPLIFT		\$157,995.05	\$51,783.62	\$32,748.99	\$73,661.77	\$375,776.00	\$72,361.47
RESIDUALS		(\$690,408.17)	(\$652,732.19)	(\$479,648.42)	\$163,777.00	(\$440,318.42)	(\$778,118.31)
ANCILLARY SERVICES		\$2,746,443.54	\$2,061,616.00	\$1,487,708.85	\$2,023,252.64	\$2,203,220.96	\$1,965,414.99
TCC		\$6,788,355.81	\$5,192,082.77	\$4,404,350.04	\$4,843,517.42	\$8,525,703.47	\$8,423,740.16
	7	8	9	10	11	12	13
ENERGY	\$37,959,895.81	\$31,371,661.28	\$22,510,916.50	\$18,253,720.32	\$14,665,859.18	\$13,540,171.80	\$26,326,028.59
TRANSMISSION SERVICE	\$6,807,705.35	\$4,535,837.93	\$3,148,476.27	\$2,126,754.93	\$982,492.49	\$1,366,776.17	\$2,074,345.42
UPLIFT	\$677,605.91	\$317,650.28	\$83,119.19	\$41,610.10	\$62,429.41	\$29,072.57	\$68,365.86
RESIDUALS	(\$635,743.40)	(\$135,289.09)	(\$152,382.12)	(\$397,020.93)	(\$361,915.71)	(\$393,162.45)	(\$643,576.91)
ANCILLARY SERVICES	\$2,022,221.18	\$2,024,734.97	\$1,677,829.19	\$1,439,166.69	\$1,271,583.28	\$1,215,058.68	\$1,405,161.78
TCC	\$10,328,145.46	\$6,711,395.02	\$4,480,499.99	\$2,504,165.97	\$597,425.79	\$1,255,869.68	\$3,025,550.60
	14	15	16	17	18	19	20
ENERGY	\$56,983,934.72	\$50,723,802.08	\$29,120,773.73	\$11,797,390.44	\$15,052,383.04	\$22,628,267.55	\$25,340,680.30
TRANSMISSION SERVICE	\$2,560,728.87	\$2,905,055.96	\$3,706,369.81	\$1,637,434.21	\$1,655,220.40	\$3,060,266.08	\$3,926,241.45
UPLIFT	\$120,263.75	\$420,664.30	\$267,133.10	\$4,757.64	\$52,077.83	\$154,223.73	\$155,458.25
RESIDUALS	(\$1,669,201.03)	(\$2,012,467.86)	(\$624,095.74)	(\$194,563.43)	(\$662,291.15)	(\$277,636.25)	(\$497,269.94)
ANCILLARY SERVICES	\$2,096,854.24	\$1,951,900.88	\$1,952,770.14	\$1,248,874.76	\$1,373,695.84	\$1,592,944.33	\$1,838,590.69
TCC	\$6,368,986.13	\$6,352,714.31	\$6,244,204.40	\$1,481,858.20	\$1,363,547.18	\$4,436,671.31	\$6,433,622.03
	21	22	23	24	25	26	27
ENERGY	\$16,603,622.69	\$15,344,956.38	\$12,599,864.15	\$20,620,108.17	\$36,293,000.71	\$31,674,135.40	\$23,206,304.36
TRANSMISSION SERVICE	\$2,300,373.46	\$2,162,997.42	\$1,327,459.92	\$1,478,871.15	\$2,656,701.89	\$4,694,316.99	\$4,382,866.57
UPLIFT	\$34,521.35	\$48,236.26	\$15,927.39	\$40,241.42	\$194,896.36	\$223,825.58	\$207,839.64
RESIDUALS	(\$436,474.40)	(\$108,742.88)	(\$380,413.61)	(\$528,413.04)	(\$1,022,374.62)	(\$375,847.88)	(\$499,563.50)
ANCILLARY SERVICES	\$1,454,445.37	\$1,456,309.59	\$1,260,015.43	\$1,422,544.19	\$2,080,236.70	\$1,941,241.91	\$1,571,651.81
TCC	\$2,668,181.44	\$2,829,659.19	\$913,969.57	\$1,037,919.79	\$4,824,654.31	\$8,797,887.59	\$7,667,692.41
	28						
ENERGY	\$40,508,599.62						
TRANSMISSION SERVICE	\$3,434,040.38						
UPLIFT	\$131,813.83						
RESIDUALS	(\$720,925.30)						
ANCILLARY SERVICES	\$2,118,139.48						
TCC	\$6,125,061.23						



SETTLEMENTS REPORT
February 2022 Close-Out Settlement
November 7, 2022

Close-Out Settlement – Market Costs Analysis

	MONDAY	TUESDAY	WEDNESDAY	THURSDAY	FRIDAY	SATURDAY	SUNDAY
		1	2	3	4	5	6
ENERGY		\$53,338,776.60	\$35,478,584.67	\$27,455,703.69	\$39,678,950.61	\$44,246,165.82	\$46,719,906.09
TRANSMISSION SERVICE		\$5,592,939.35	\$3,713,667.11	\$3,304,279.55	\$3,540,193.76	\$5,622,898.53	\$5,513,348.43
UPLIFT		\$157,995.06	\$51,783.62	\$32,748.99	\$73,661.77	\$375,776.01	\$72,361.47
RESIDUALS		(\$690,408.19)	(\$652,732.22)	(\$479,648.42)	\$163,776.92	(\$440,318.44)	(\$778,118.34)
ANCILLARY SERVICES		\$2,746,243.70	\$2,061,388.79	\$1,487,623.70	\$2,023,314.59	\$2,202,935.55	\$1,965,210.00
TCC		\$6,788,355.81	\$5,192,082.77	\$4,404,350.04	\$4,843,517.42	\$8,525,703.47	\$8,423,740.16
	7	8	9	10	11	12	13
ENERGY	\$37,959,895.92	\$31,371,661.43	\$22,510,916.35	\$18,253,720.24	\$14,665,859.29	\$13,540,172.11	\$26,326,028.40
TRANSMISSION SERVICE	\$6,807,670.72	\$4,535,809.72	\$3,148,370.36	\$2,126,630.07	\$982,384.94	\$1,366,679.82	\$2,074,300.79
UPLIFT	\$677,605.92	\$317,650.28	\$83,119.19	\$41,610.11	\$62,429.42	\$29,072.57	\$68,365.84
RESIDUALS	(\$635,743.44)	(\$135,289.06)	(\$152,382.11)	(\$397,020.94)	(\$361,915.71)	(\$393,162.45)	(\$643,576.91)
ANCILLARY SERVICES	\$2,022,179.56	\$2,024,701.05	\$1,677,701.88	\$1,439,016.62	\$1,271,454.01	\$1,214,942.86	\$1,405,108.14
TCC	\$10,328,145.46	\$6,711,395.02	\$4,480,499.99	\$2,504,165.97	\$597,425.79	\$1,255,869.68	\$3,025,550.60
	14	15	16	17	18	19	20
ENERGY	\$56,983,934.99	\$50,723,802.19	\$29,120,774.28	\$11,797,390.51	\$15,052,383.39	\$22,628,267.50	\$25,340,680.48
TRANSMISSION SERVICE	\$2,560,536.28	\$2,904,878.56	\$3,706,274.18	\$1,637,350.91	\$1,655,028.95	\$3,060,155.53	\$3,926,134.32
UPLIFT	\$120,263.74	\$420,664.29	\$267,133.11	\$4,757.65	\$52,077.83	\$154,223.73	\$155,458.26
RESIDUALS	(\$1,669,201.02)	(\$2,012,467.85)	(\$624,095.78)	(\$194,563.41)	(\$662,291.11)	(\$277,636.25)	(\$497,269.93)
ANCILLARY SERVICES	\$2,096,622.73	\$1,951,687.64	\$1,952,655.18	\$1,248,774.63	\$1,373,465.71	\$1,592,811.45	\$1,838,461.91
TCC	\$6,368,986.13	\$6,352,714.31	\$6,244,204.40	\$1,481,858.20	\$1,363,547.18	\$4,436,671.31	\$6,433,622.03
	21	22	23	24	25	26	27
ENERGY	\$16,603,623.06	\$15,344,956.25	\$12,599,864.53	\$20,620,108.31	\$36,293,000.48	\$31,674,135.79	\$23,206,304.51
TRANSMISSION SERVICE	\$2,300,265.17	\$2,162,898.50	\$1,327,369.57	\$1,478,762.23	\$2,656,708.45	\$4,694,267.50	\$4,382,729.19
UPLIFT	\$34,521.34	\$48,236.26	\$15,927.39	\$40,241.43	\$194,896.35	\$223,825.58	\$207,839.64
RESIDUALS	(\$436,474.41)	(\$108,742.91)	(\$380,413.62)	(\$528,413.04)	(\$1,022,374.62)	(\$375,847.79)	(\$499,563.54)
ANCILLARY SERVICES	\$1,454,315.21	\$1,456,190.68	\$1,259,906.83	\$1,422,413.26	\$2,080,244.59	\$1,941,182.42	\$1,571,486.68
TCC	\$2,668,181.44	\$2,829,659.19	\$913,969.57	\$1,037,919.79	\$4,824,654.31	\$8,797,887.59	\$7,667,692.41
	28						
ENERGY	\$40,508,599.38						
TRANSMISSION SERVICE	\$3,433,906.17						
UPLIFT	\$131,813.82						
RESIDUALS	(\$720,925.29)						
ANCILLARY SERVICES	\$2,117,978.15						
TCC	\$6,125,061.23						

