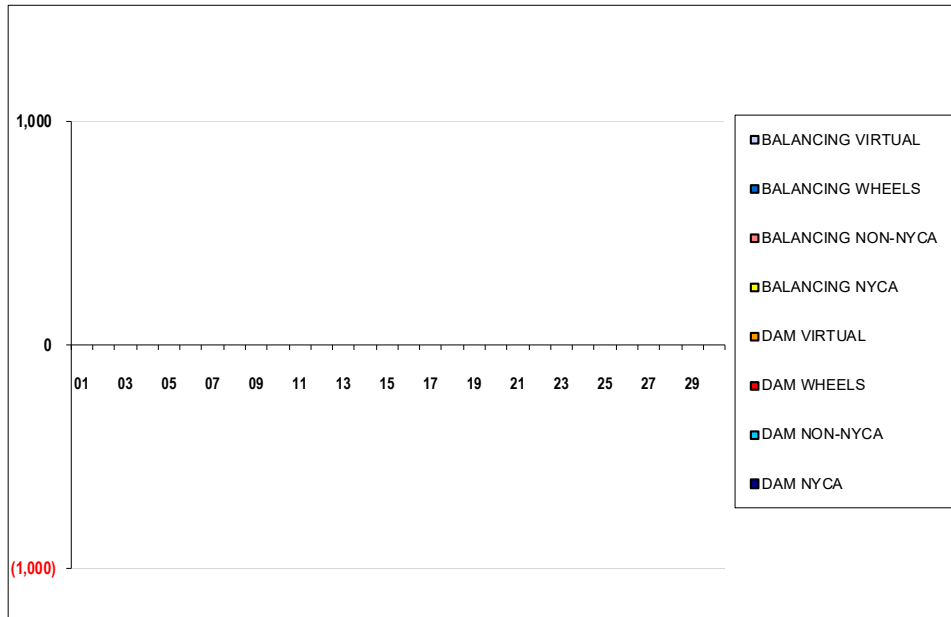


SETTLEMENTS REPORT
 April 2022 Close-Out Settlement
 January 9, 2023

Close-Out Settlement – Market Supply Delta Analysis

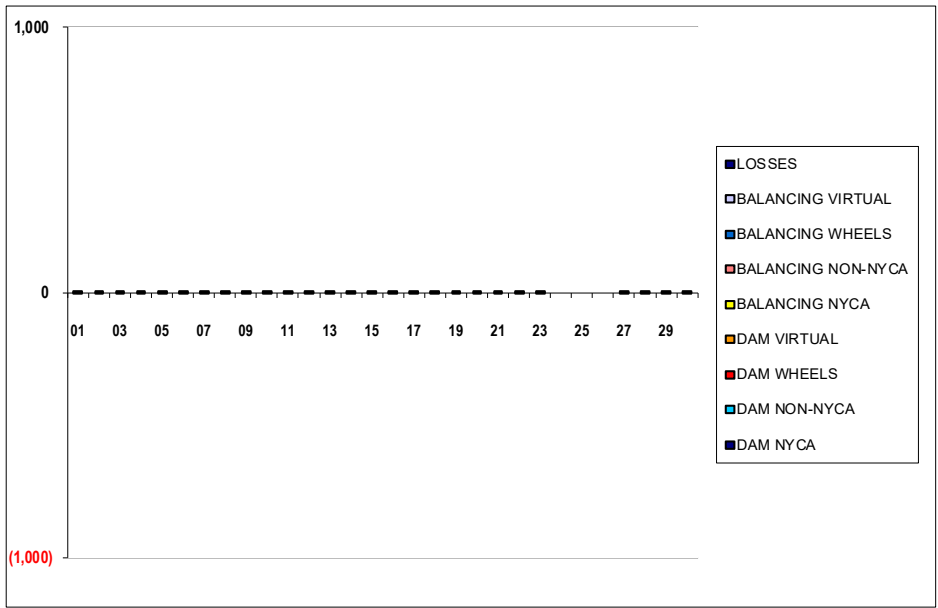
	MONDAY	TUESDAY	WEDNESDAY	THURSDAY	FRIDAY	SATURDAY	SUNDAY
					1	2	3
DAM NYCA					0	0	0
DAM NON-NYCA					0	0	0
DAM WHEELS					0	0	0
DAM VIRTUAL					0	0	0
BALANCING NYCA					0	0	0
BALANCING NON-NYCA					0	0	0
BALANCING WHEELS					0	0	0
BALANCING VIRTUAL					0	0	0
	4	5	6	7	8	9	10
DAM NYCA	0	0	0	0	0	0	0
DAM NON-NYCA	0	0	0	0	0	0	0
DAM WHEELS	0	0	0	0	0	0	0
DAM VIRTUAL	0	0	0	0	0	0	0
BALANCING NYCA	0	0	0	0	0	0	0
BALANCING NON-NYCA	0	0	0	0	0	0	0
BALANCING WHEELS	0	0	0	0	0	0	0
BALANCING VIRTUAL	0	0	0	0	0	0	0
	11	12	13	14	15	16	17
DAM NYCA	0	0	0	0	0	0	0
DAM NON-NYCA	0	0	0	0	0	0	0
DAM WHEELS	0	0	0	0	0	0	0
DAM VIRTUAL	0	0	0	0	0	0	0
BALANCING NYCA	0	0	0	0	0	0	0
BALANCING NON-NYCA	0	0	0	0	0	0	0
BALANCING WHEELS	0	0	0	0	0	0	0
BALANCING VIRTUAL	0	0	0	0	0	0	0
	18	19	20	21	22	23	24
DAM NYCA	0	0	0	0	0	0	0
DAM NON-NYCA	0	0	0	0	0	0	0
DAM WHEELS	0	0	0	0	0	0	0
DAM VIRTUAL	0	0	0	0	0	0	0
BALANCING NYCA	0	0	0	0	0	0	0
BALANCING NON-NYCA	0	0	0	0	0	0	0
BALANCING WHEELS	0	0	0	0	0	0	0
BALANCING VIRTUAL	0	0	0	0	0	0	0
	25	26	27	28	29	30	
DAM NYCA	0	0	0	0	0	0	
DAM NON-NYCA	0	0	0	0	0	0	
DAM WHEELS	0	0	0	0	0	0	
DAM VIRTUAL	0	0	0	0	0	0	
BALANCING NYCA	0	0	0	0	0	0	
BALANCING NON-NYCA	0	0	0	0	0	0	
BALANCING WHEELS	0	0	0	0	0	0	
BALANCING VIRTUAL	0	0	0	0	0	0	



SETTLEMENTS REPORT
 April 2022 Close-Out Settlement
 January 9, 2023

Close-Out Settlement – Market Withdrawals Delta Analysis

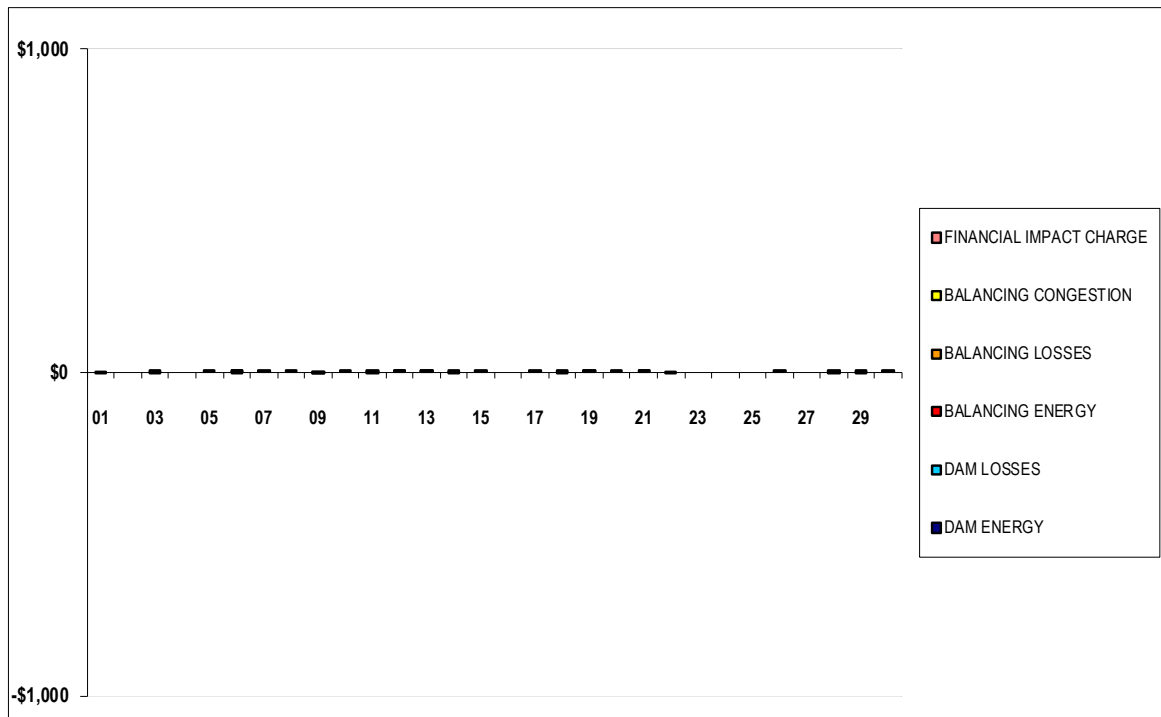
	MONDAY	TUESDAY	WEDNESDAY	THURSDAY	FRIDAY	SATURDAY	SUNDAY
					1	2	3
DAM NYCA					0	0	0
DAM NON-NYCA					0	0	0
DAM WHEELS					0	0	0
DAM VIRTUAL					0	0	0
BALANCING NYCA					(0)	(0)	(0)
BALANCING NON-NYCA					0	0	0
BALANCING WHEELS					0	0	0
BALANCING VIRTUAL					0	0	0
UFE/LOSSES					0	0	0
	4	5	6	7	8	9	10
DAM NYCA	0	0	0	0	0	0	0
DAM NON-NYCA	0	0	0	0	0	0	0
DAM WHEELS	0	0	0	0	0	0	0
DAM VIRTUAL	0	0	0	0	0	0	0
BALANCING NYCA	(0)	(0)	0	0	(0)	(0)	(0)
BALANCING NON-NYCA	0	0	0	0	0	0	0
BALANCING WHEELS	0	0	0	0	0	0	0
BALANCING VIRTUAL	0	0	0	0	0	0	0
UFE/LOSSES	0	0	(0)	(0)	0	0	0
	11	12	13	14	15	16	17
DAM NYCA	0	0	0	0	0	0	0
DAM NON-NYCA	0	0	0	0	0	0	0
DAM WHEELS	0	0	0	0	0	0	0
DAM VIRTUAL	0	0	0	0	0	0	0
BALANCING NYCA	(0)	(0)	(0)	(0)	(0)	(0)	(0)
BALANCING NON-NYCA	0	0	0	0	0	0	0
BALANCING WHEELS	0	0	0	0	0	0	0
BALANCING VIRTUAL	0	0	0	0	0	0	0
UFE/LOSSES	0	0	0	0	0	0	0
	18	19	20	21	22	23	24
DAM NYCA	0	0	0	0	0	0	0
DAM NON-NYCA	0	0	0	0	0	0	0
DAM WHEELS	0	0	0	0	0	0	0
DAM VIRTUAL	0	0	0	0	0	0	0
BALANCING NYCA	(0)	(0)	(0)	(0)	(0)	(0)	0
BALANCING NON-NYCA	0	0	0	0	0	0	0
BALANCING WHEELS	0	0	0	0	0	0	0
BALANCING VIRTUAL	0	0	0	0	0	0	0
UFE/LOSSES	0	0	0	0	0	0	0
	25	26	27	28	29	30	
DAM NYCA	0	0	0	0	0	0	
DAM NON-NYCA	0	0	0	0	0	0	
DAM WHEELS	0	0	0	0	0	0	
DAM VIRTUAL	0	0	0	0	0	0	
BALANCING NYCA	0	0	0	0	0	0	
BALANCING NON-NYCA	0	0	0	0	0	0	
BALANCING WHEELS	0	0	0	0	0	0	
BALANCING VIRTUAL	0	0	0	0	0	0	
UFE/LOSSES	0	0	(0)	(0)	(0)	(0)	



SETTLEMENTS REPORT
 April 2022 Close-Out Settlement
 January 9, 2023

Close-Out Settlement – Market Residuals Delta Analysis

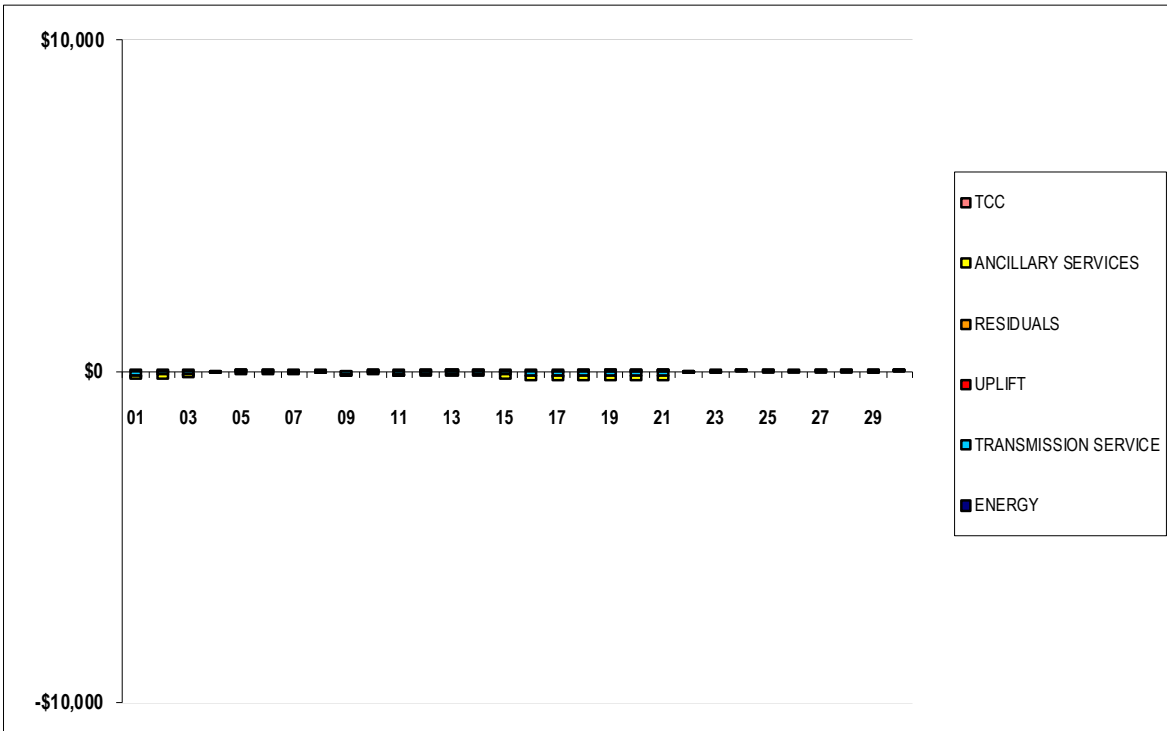
	MONDAY	TUESDAY	WEDNESDAY	THURSDAY	FRIDAY	SATURDAY	SUNDAY
					1	2	3
DAM ENERGY					\$0.00	\$0.00	\$0.01
DAM LOSSES					\$0.00	\$0.00	\$0.00
BALANCING ENERGY					\$0.00	\$0.00	\$0.00
BALANCING LOSSES					(\$0.01)	\$0.00	(\$0.01)
BALANCING CONGESTION					\$0.00	\$0.00	\$0.00
FINANCIAL IMPACT CHARGE					\$0.00	\$0.00	\$0.00
	4	5	6	7	8	9	10
DAM ENERGY	\$0.00	\$0.00	\$0.01	\$0.01	\$0.00	\$0.00	\$0.00
DAM LOSSES	\$0.00	\$0.00	(\$0.01)	\$0.00	\$0.00	(\$0.01)	\$0.00
BALANCING ENERGY	\$0.00	\$0.00	\$0.00	\$0.00	\$0.00	(\$0.01)	\$0.00
BALANCING LOSSES	\$0.00	\$0.00	\$0.01	\$0.00	\$0.00	\$0.00	\$0.00
BALANCING CONGESTION	\$0.00	\$0.01	\$0.00	\$0.00	\$0.00	\$0.00	\$0.01
FINANCIAL IMPACT CHARGE	\$0.00	\$0.00	\$0.00	\$0.00	\$0.04	\$0.00	\$0.00
	11	12	13	14	15	16	17
DAM ENERGY	\$0.00	\$0.00	\$0.00	\$0.00	\$0.00	\$0.00	\$0.00
DAM LOSSES	\$0.00	\$0.01	\$0.01	(\$0.01)	\$0.00	\$0.00	\$0.00
BALANCING ENERGY	\$0.01	\$0.01	\$0.00	\$0.01	\$0.00	\$0.00	\$0.01
BALANCING LOSSES	\$0.00	\$0.00	\$0.01	\$0.00	\$0.00	\$0.00	\$0.00
BALANCING CONGESTION	\$0.00	\$0.00	\$0.00	\$0.00	\$0.01	\$0.00	\$0.00
FINANCIAL IMPACT CHARGE	(\$0.05)	\$0.00	\$0.00	\$0.00	\$0.00	\$0.00	\$0.00
	18	19	20	21	22	23	24
DAM ENERGY	\$0.00	\$0.00	\$0.01	\$0.00	\$0.00	\$0.00	\$0.00
DAM LOSSES	\$0.01	\$0.01	\$0.00	\$0.01	\$0.00	\$0.00	\$0.00
BALANCING ENERGY	\$0.00	\$0.01	\$0.00	\$0.01	\$0.00	\$0.00	\$0.00
BALANCING LOSSES	\$0.00	\$0.00	\$0.00	\$0.00	\$0.00	\$0.00	\$0.00
BALANCING CONGESTION	(\$0.01)	\$0.00	\$0.00	\$0.00	(\$0.01)	\$0.00	\$0.00
FINANCIAL IMPACT CHARGE	\$0.00	\$0.00	\$0.00	\$0.00	\$0.00	\$0.00	\$0.00
	25	26	27	28	29	30	
DAM ENERGY	\$0.00	\$0.00	\$0.00	\$0.01	\$0.01	\$0.00	
DAM LOSSES	\$0.00	\$0.00	\$0.00	(\$0.01)	\$0.00	\$0.01	
BALANCING ENERGY	\$0.00	\$0.00	\$0.00	\$0.00	\$0.00	\$0.00	
BALANCING LOSSES	\$0.00	\$0.00	\$0.00	\$0.00	\$0.00	\$0.00	
BALANCING CONGESTION	\$0.00	\$0.00	\$0.00	\$0.00	(\$0.01)	\$0.00	
FINANCIAL IMPACT CHARGE	\$0.00	\$0.06	\$0.00	\$0.00	\$0.00	\$0.00	



SETTLEMENTS REPORT
 April 2022 Close-Out Settlement
 January 9, 2023

Close-Out Settlement – Market Costs Delta Analysis

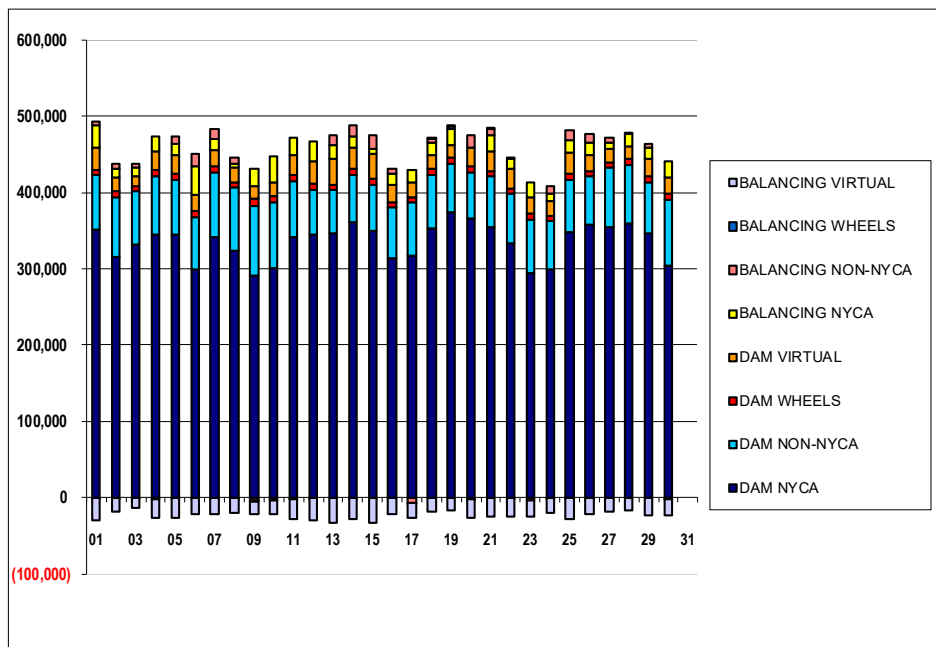
	MONDAY	TUESDAY	WEDNESDAY	THURSDAY	FRIDAY	SATURDAY	SUNDAY
					1	2	3
ENERGY					\$0.13	(\$0.02)	\$0.04
TRANSMISSION SERVICE					(\$117.35)	(\$104.82)	(\$91.79)
UPLIFT					\$0.00	\$0.01	(\$0.02)
RESIDUALS					(\$0.01)	\$0.00	\$0.00
ANCILLARY SERVICES					(\$117.54)	(\$105.03)	(\$91.93)
TCC					\$0.00	\$0.00	\$0.00
	4	5	6	7	8	9	10
ENERGY	(\$0.16)	\$0.09	\$0.08	(\$0.09)	(\$0.13)	(\$0.32)	(\$0.02)
TRANSMISSION SERVICE	(\$0.02)	(\$24.57)	(\$54.16)	(\$30.09)	(\$0.01)	(\$77.69)	(\$40.31)
UPLIFT	\$0.00	\$0.02	\$0.00	\$0.00	\$0.00	\$0.00	\$0.02
RESIDUALS	\$0.00	\$0.01	\$0.01	\$0.01	\$0.04	(\$0.02)	\$0.01
ANCILLARY SERVICES	(\$0.05)	(\$24.63)	(\$54.25)	(\$30.14)	(\$0.04)	(\$77.83)	(\$40.37)
TCC	\$0.00	\$0.00	\$0.00	\$0.00	\$0.00	\$0.00	\$0.00
	11	12	13	14	15	16	17
ENERGY	\$0.03	(\$0.36)	\$0.18	\$0.32	(\$0.08)	\$0.11	(\$0.14)
TRANSMISSION SERVICE	(\$75.90)	(\$76.48)	(\$76.59)	(\$76.83)	(\$112.85)	(\$132.51)	(\$133.22)
UPLIFT	(\$0.01)	\$0.01	\$0.01	\$0.08	\$0.00	\$0.00	(\$0.01)
RESIDUALS	(\$0.04)	\$0.02	\$0.02	\$0.00	\$0.01	\$0.00	\$0.01
ANCILLARY SERVICES	(\$76.03)	(\$76.64)	(\$76.73)	(\$76.97)	(\$113.05)	(\$132.75)	(\$133.45)
TCC	\$0.00	\$0.00	\$0.00	\$0.00	\$0.00	\$0.00	\$0.00
	18	19	20	21	22	23	24
ENERGY	\$0.18	\$0.34	(\$0.13)	\$0.20	(\$0.19)	\$0.11	\$0.25
TRANSMISSION SERVICE	(\$132.82)	(\$133.47)	(\$132.64)	(\$132.84)	(\$0.04)	(\$0.02)	\$0.01
UPLIFT	\$0.01	\$0.01	\$0.02	\$0.02	\$0.00	\$0.00	\$0.00
RESIDUALS	\$0.00	\$0.02	\$0.01	\$0.02	(\$0.01)	\$0.00	\$0.00
ANCILLARY SERVICES	(\$133.05)	(\$133.70)	(\$132.92)	(\$133.07)	(\$0.06)	(\$0.03)	\$0.01
TCC	\$0.00	\$0.00	\$0.00	\$0.00	\$0.00	\$0.00	\$0.00
	25	26	27	28	29	30	
ENERGY	(\$0.22)	(\$0.03)	(\$0.07)	(\$0.07)	(\$0.22)	\$0.15	
TRANSMISSION SERVICE	\$0.01	\$0.00	\$0.22	\$0.26	\$0.31	\$0.22	
UPLIFT	\$0.00	\$0.00	\$0.00	\$0.00	(\$0.01)	\$0.00	
RESIDUALS	\$0.00	\$0.06	\$0.00	\$0.00	\$0.00	\$0.01	
ANCILLARY SERVICES	\$0.02	\$0.00	\$0.37	\$0.44	\$0.51	\$0.35	
TCC	\$0.00	\$0.00	\$0.00	\$0.00	\$0.00	\$0.00	



SETTLEMENTS REPORT
 April 2022 Close-Out Settlement
 January 9, 2023

4-Month Settlement Adjustment – Market Supply Analysis

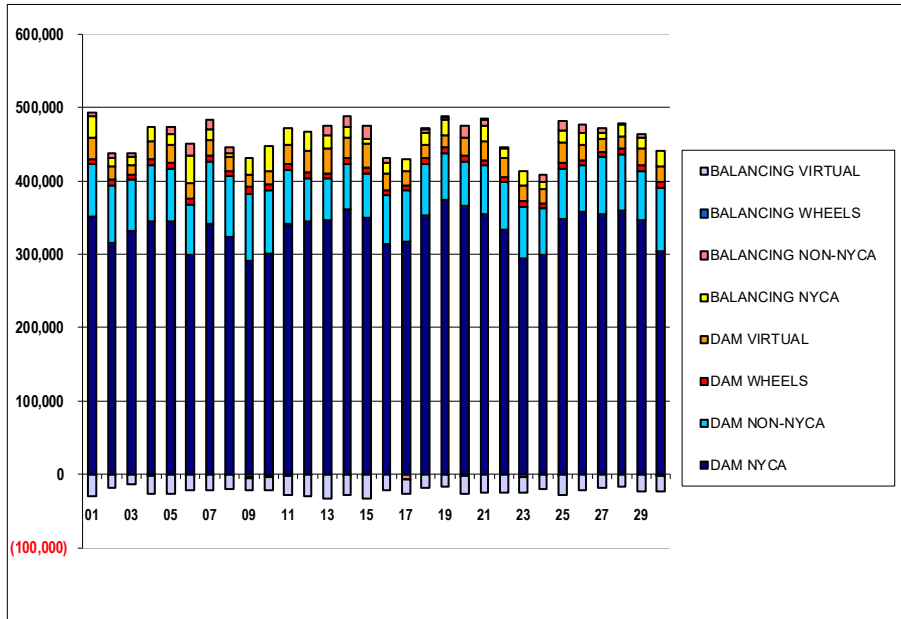
	MONDAY	TUESDAY	WEDNESDAY	THURSDAY	FRIDAY	SATURDAY	SUNDAY
					1	2	3
DAM NYCA					351,803	315,984	331,873
DAM NON-NYCA					71,279	78,550	69,401
DAM WHEELS					7,200	7,200	7,290
DAM VIRTUAL					28,346	18,320	13,543
BALANCING NYCA					30,148	10,952	10,104
BALANCING NON-NYCA					4,727	6,396	6,267
BALANCING WHEELS					(780)	(666)	(615)
BALANCING VIRTUAL					(28,346)	(18,320)	(13,543)
	4	5	6	7	8	9	10
DAM NYCA	344,662	344,170	299,407	342,195	324,371	291,731	300,844
DAM NON-NYCA	77,337	72,948	68,577	84,689	81,955	91,491	86,106
DAM WHEELS	7,275	7,045	7,650	7,650	7,850	8,460	8,398
DAM VIRTUAL	24,145	25,818	20,869	20,923	18,705	17,023	18,211
BALANCING NYCA	20,583	13,262	38,562	15,679	4,870	21,918	34,838
BALANCING NON-NYCA	(1,034)	11,034	15,909	12,883	7,978	(3,846)	(2,182)
BALANCING WHEELS	(620)	(360)	(450)	(450)	(650)	(1,260)	(1,260)
BALANCING VIRTUAL	(24,145)	(25,818)	(20,869)	(20,923)	(18,705)	(17,023)	(18,211)
	11	12	13	14	15	16	17
DAM NYCA	341,794	344,421	346,741	361,272	349,528	313,708	317,819
DAM NON-NYCA	72,485	59,933	56,867	62,192	60,986	66,690	68,728
DAM WHEELS	8,600	7,200	7,200	7,251	7,277	7,200	7,240
DAM VIRTUAL	26,366	30,048	33,711	28,268	32,608	22,263	19,768
BALANCING NYCA	22,941	25,694	17,452	14,092	7,570	14,187	16,386
BALANCING NON-NYCA	(750)	(51)	13,920	15,636	17,238	7,582	(6,830)
BALANCING WHEELS	(1,250)	0	0	(51)	(97)	0	(40)
BALANCING VIRTUAL	(26,366)	(30,048)	(33,711)	(28,268)	(32,608)	(22,263)	(19,768)
	18	19	20	21	22	23	24
DAM NYCA	352,689	373,956	366,548	354,464	333,757	293,946	299,276
DAM NON-NYCA	71,100	64,434	59,494	66,983	64,561	70,803	63,156
DAM WHEELS	7,200	7,200	7,760	7,200	7,650	7,200	7,200
DAM VIRTUAL	17,698	17,292	24,427	24,758	25,107	21,346	19,915
BALANCING NYCA	17,179	19,802	(1,606)	21,194	13,960	20,245	9,848
BALANCING NON-NYCA	4,344	4,819	17,080	9,047	1,442	(3,269)	9,115
BALANCING WHEELS	700	600	(135)	1,350	(450)	0	(89)
BALANCING VIRTUAL	(17,698)	(17,292)	(24,427)	(24,758)	(25,107)	(21,346)	(19,915)
	25	26	27	28	29	30	31
DAM NYCA	349,040	357,997	355,463	359,348	345,967	304,570	0
DAM NON-NYCA	68,186	63,371	77,167	77,364	68,174	85,900	0
DAM WHEELS	7,260	7,220	7,200	7,200	7,200	8,160	0
DAM VIRTUAL	27,898	21,397	18,151	17,093	23,245	21,523	0
BALANCING NYCA	17,070	16,018	8,251	15,356	14,277	20,639	0
BALANCING NON-NYCA	11,945	10,791	6,386	1,750	4,300	(524)	0
BALANCING WHEELS	(322)	(770)	0	0	0	(960)	0
BALANCING VIRTUAL	(27,898)	(21,397)	(18,151)	(17,093)	(23,245)	(21,523)	0



SETTLEMENTS REPORT
April 2022 Close-Out Settlement
January 9, 2023

Close-Out Settlement – Market Supply Analysis

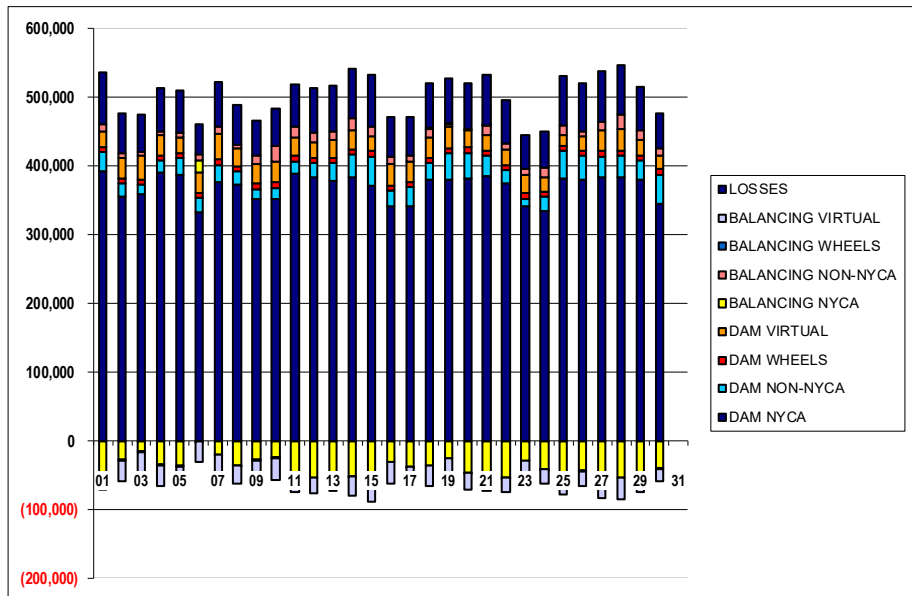
	MONDAY	TUESDAY	WEDNESDAY	THURSDAY	FRIDAY	SATURDAY	SUNDAY
					1	2	3
DAM NYCA					351,803	315,984	331,873
DAM NON-NYCA					71,279	78,550	69,401
DAM WHEELS					7,200	7,200	7,290
DAM VIRTUAL					28,346	18,320	13,543
BALANCING NYCA					30,148	10,952	10,104
BALANCING NON-NYCA					4,727	6,396	6,267
BALANCING WHEELS					(780)	(666)	(615)
BALANCING VIRTUAL					(28,346)	(18,320)	(13,543)
	4	5	6	7	8	9	10
DAM NYCA	344,662	344,170	299,407	342,195	324,371	291,731	300,844
DAM NON-NYCA	77,337	72,948	68,577	84,689	81,955	91,491	86,106
DAM WHEELS	7,275	7,045	7,650	7,650	7,850	8,460	8,398
DAM VIRTUAL	24,145	25,818	20,869	20,923	18,705	17,023	18,211
BALANCING NYCA	20,583	13,262	38,562	15,679	4,870	21,918	34,838
BALANCING NON-NYCA	(1,034)	11,034	15,909	12,883	7,978	(3,846)	(2,182)
BALANCING WHEELS	(620)	(360)	(450)	(450)	(650)	(1,260)	(1,260)
BALANCING VIRTUAL	(24,145)	(25,818)	(20,869)	(20,923)	(18,705)	(17,023)	(18,211)
	11	12	13	14	15	16	17
DAM NYCA	341,794	344,421	346,741	361,272	349,528	313,708	317,619
DAM NON-NYCA	72,485	59,933	56,867	62,192	60,986	66,690	68,728
DAM WHEELS	8,600	7,200	7,200	7,251	7,277	7,200	7,240
DAM VIRTUAL	26,366	30,048	33,711	28,268	32,608	22,263	19,768
BALANCING NYCA	22,941	25,694	17,452	14,092	7,570	14,187	16,386
BALANCING NON-NYCA	(750)	(51)	13,920	15,636	17,238	7,582	(6,830)
BALANCING WHEELS	(1,250)	0	0	(51)	(97)	0	(40)
BALANCING VIRTUAL	(26,366)	(30,048)	(33,711)	(28,268)	(32,608)	(22,263)	(19,768)
	18	19	20	21	22	23	24
DAM NYCA	352,689	373,956	366,548	354,464	333,757	293,946	299,276
DAM NON-NYCA	71,100	64,434	59,494	66,983	64,561	70,803	63,156
DAM WHEELS	7,200	7,200	7,760	7,200	7,650	7,200	7,200
DAM VIRTUAL	17,698	17,292	24,427	24,758	25,107	21,346	19,915
BALANCING NYCA	17,179	19,802	(1,606)	21,194	13,960	20,245	9,848
BALANCING NON-NYCA	4,344	4,819	17,080	9,047	1,442	(3,269)	9,115
BALANCING WHEELS	700	600	(135)	1,350	(450)	0	(89)
BALANCING VIRTUAL	(17,698)	(17,292)	(24,427)	(24,758)	(25,107)	(21,346)	(19,915)
	25	26	27	28	29	30	
DAM NYCA	349,040	357,997	355,463	359,348	345,967	304,570	
DAM NON-NYCA	68,186	63,371	77,167	77,364	68,174	85,900	
DAM WHEELS	7,260	7,220	7,200	7,200	7,200	8,160	
DAM VIRTUAL	27,898	21,397	18,151	17,093	23,245	21,523	
BALANCING NYCA	17,070	16,018	8,251	15,356	14,277	20,639	
BALANCING NON-NYCA	11,945	10,791	6,386	1,750	4,300	(524)	
BALANCING WHEELS	(322)	(770)	0	0	0	(960)	
BALANCING VIRTUAL	(27,898)	(21,397)	(18,151)	(17,093)	(23,245)	(21,523)	



SETTLEMENTS REPORT
 April 2022 Close-Out Settlement
 January 9, 2023

4-Month Settlement Adjustment – Market Withdrawals Analysis

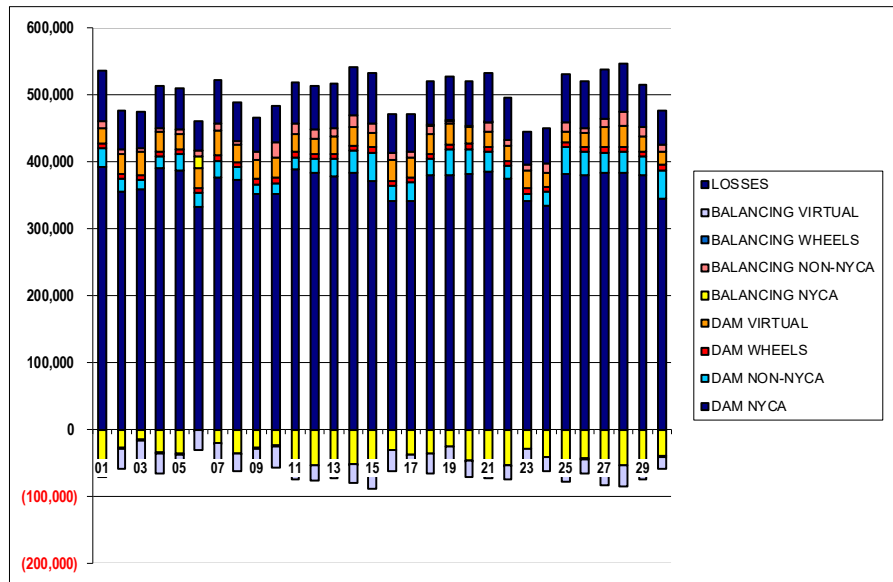
	MONDAY	TUESDAY	WEDNESDAY	THURSDAY	FRIDAY	SATURDAY	SUNDAY
					1	2	3
DAM NYCA					391,418	354,645	358,486
DAM NON-NYCA					28,022	20,221	14,491
DAM WHEELS					7,200	7,200	7,290
DAM VIRTUAL					23,339	29,897	34,231
BALANCING NYCA					(47,123)	(27,307)	(15,358)
BALANCING NON-NYCA					10,846	6,428	6,040
BALANCING WHEELS					(780)	(666)	(615)
BALANCING VIRTUAL					(23,339)	(29,897)	(34,231)
UFE/LOSSES					74,794	57,896	53,986
	4	5	6	7	8	9	10
DAM NYCA	389,365	386,564	331,771	375,473	372,738	351,274	351,961
DAM NON-NYCA	18,226	23,840	20,897	25,971	18,776	14,151	15,640
DAM WHEELS	7,275	7,045	7,650	7,650	7,850	8,460	8,398
DAM VIRTUAL	29,644	24,168	29,514	37,922	25,287	27,872	30,590
BALANCING NYCA	(34,736)	(36,396)	17,947	(20,329)	(35,530)	(27,352)	(24,248)
BALANCING NON-NYCA	5,339	6,563	9,366	10,614	6,211	13,060	21,697
BALANCING WHEELS	(620)	(360)	(450)	(450)	(650)	(1,260)	(1,260)
BALANCING VIRTUAL	(29,644)	(24,168)	(29,514)	(37,922)	(25,287)	(27,872)	(30,590)
UFE/LOSSES	63,355	60,843	42,484	63,716	56,979	50,162	54,586
	11	12	13	14	15	16	17
DAM NYCA	389,002	382,558	378,587	382,723	371,573	341,055	341,181
DAM NON-NYCA	17,328	21,301	25,746	33,622	42,283	23,417	28,465
DAM WHEELS	8,600	7,200	7,200	7,251	7,277	7,200	7,240
DAM VIRTUAL	26,257	22,811	26,360	28,159	22,351	31,613	29,607
BALANCING NYCA	(47,409)	(53,145)	(47,031)	(51,690)	(66,684)	(30,602)	(37,276)
BALANCING NON-NYCA	15,658	13,821	11,474	16,773	14,113	9,563	7,640
BALANCING WHEELS	(1,250)	0	0	(51)	(97)	0	(40)
BALANCING VIRTUAL	(26,257)	(22,811)	(26,360)	(28,159)	(22,351)	(31,613)	(29,607)
UFE/LOSSES	61,891	65,462	66,204	71,763	74,037	58,735	56,092
	18	19	20	21	22	23	24
DAM NYCA	379,909	380,420	381,770	384,751	375,082	341,634	334,811
DAM NON-NYCA	23,863	37,745	37,209	29,948	18,260	10,830	20,238
DAM WHEELS	7,200	7,200	7,760	7,200	7,650	7,200	7,200
DAM VIRTUAL	29,667	30,768	24,507	22,952	21,730	26,242	20,771
BALANCING NYCA	(36,351)	(24,864)	(46,920)	(49,241)	(53,053)	(29,637)	(41,172)
BALANCING NON-NYCA	13,165	4,782	1,687	13,159	9,442	9,497	13,453
BALANCING WHEELS	700	600	(135)	1,350	(450)	0	(89)
BALANCING VIRTUAL	(29,667)	(30,768)	(24,507)	(22,952)	(21,730)	(26,242)	(20,771)
UFE/LOSSES	64,726	64,928	67,771	73,071	63,989	49,402	54,065
	25	26	27	28	29	30	31
DAM NYCA	380,996	378,929	383,726	383,541	379,391	343,910	0
DAM NON-NYCA	40,408	35,577	30,110	31,147	28,183	43,671	0
DAM WHEELS	7,260	7,220	7,200	7,200	7,200	8,160	0
DAM VIRTUAL	15,552	20,467	29,713	31,968	23,405	18,418	0
BALANCING NYCA	(62,177)	(43,638)	(52,592)	(52,815)	(50,740)	(39,224)	0
BALANCING NON-NYCA	14,686	8,434	12,663	21,025	13,373	11,350	0
BALANCING WHEELS	(322)	(770)	0	0	0	(960)	0
BALANCING VIRTUAL	(15,552)	(20,467)	(29,713)	(31,968)	(23,405)	(18,418)	0
UFE/LOSSES	72,328	68,875	73,359	70,919	62,512	50,879	0



SETTLEMENTS REPORT
April 2022 Close-Out Settlement
January 9, 2023

Close-Out Settlement – Market Withdrawals Analysis

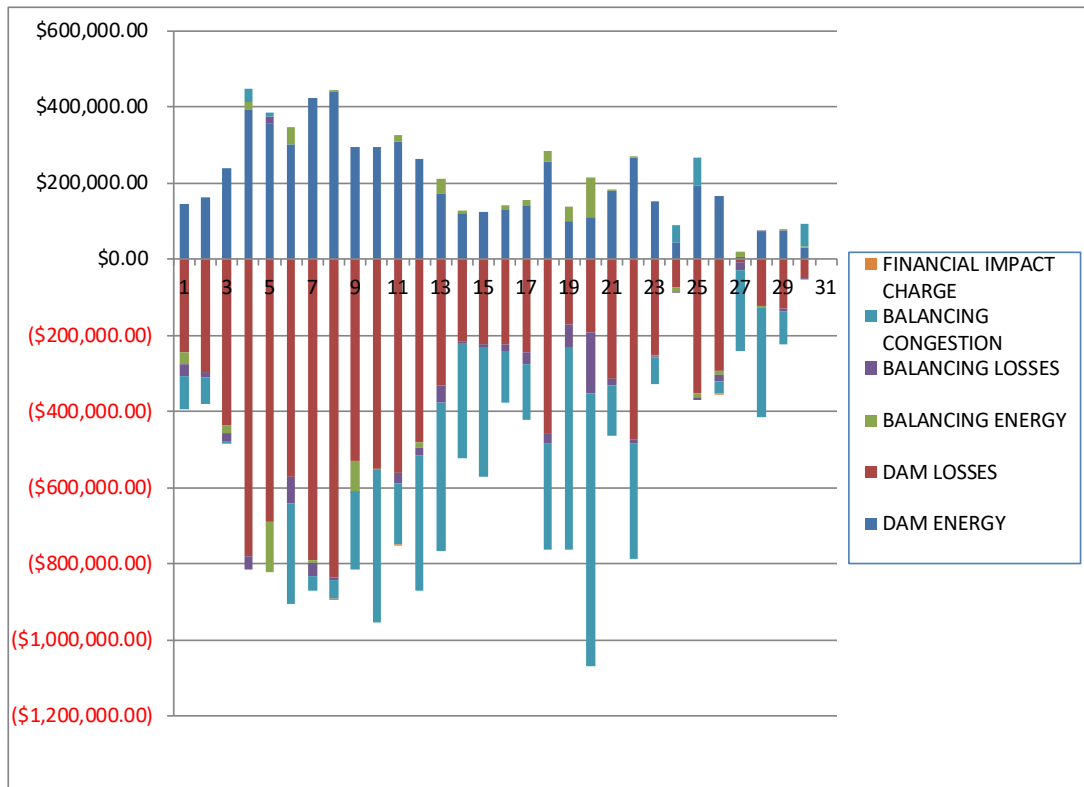
	MONDAY	TUESDAY	WEDNESDAY	THURSDAY	FRIDAY	SATURDAY	SUNDAY
					1	2	3
DAM NYCA					391,418	354,645	358,486
DAM NON-NYCA					28,022	20,221	14,491
DAM WHEELS					7,200	7,200	7,290
DAM VIRTUAL					23,339	29,897	34,231
BALANCING NYCA					(47,123)	(27,307)	(15,358)
BALANCING NON-NYCA					10,846	6,428	6,040
BALANCING WHEELS					(780)	(666)	(615)
BALANCING VIRTUAL					(23,339)	(29,897)	(34,231)
UFE/LOSSES					74,794	57,896	53,986
	4	5	6	7	8	9	10
DAM NYCA	389,365	386,564	331,771	375,473	372,738	351,274	351,961
DAM NON-NYCA	18,226	23,840	20,897	25,971	18,776	14,151	15,640
DAM WHEELS	7,275	7,045	7,650	7,650	7,850	8,460	8,398
DAM VIRTUAL	29,644	24,168	29,514	37,922	25,287	27,872	30,590
BALANCING NYCA	(34,736)	(36,396)	17,947	(20,329)	(35,530)	(27,352)	(24,248)
BALANCING NON-NYCA	5,339	6,563	9,366	10,614	6,211	13,060	21,697
BALANCING WHEELS	(620)	(360)	(450)	(450)	(650)	(1,260)	(1,260)
BALANCING VIRTUAL	(29,644)	(24,168)	(29,514)	(37,922)	(25,287)	(27,872)	(30,590)
UFE/LOSSES	63,355	60,843	42,484	63,716	56,979	50,162	54,556
	11	12	13	14	15	16	17
DAM NYCA	389,002	382,558	378,587	382,723	371,573	341,055	341,181
DAM NON-NYCA	17,328	21,301	25,746	33,622	42,283	23,417	28,465
DAM WHEELS	8,600	7,200	7,200	7,251	7,277	7,200	7,240
DAM VIRTUAL	26,257	22,811	26,360	28,159	22,351	31,613	29,607
BALANCING NYCA	(47,409)	(53,145)	(47,031)	(51,690)	(66,684)	(30,602)	(37,276)
BALANCING NON-NYCA	15,658	13,821	11,474	16,773	14,113	9,563	7,640
BALANCING WHEELS	(1,250)	0	0	(51)	(97)	0	(40)
BALANCING VIRTUAL	(26,257)	(22,811)	(26,360)	(28,159)	(22,351)	(31,613)	(29,607)
UFE/LOSSES	61,891	65,462	66,205	71,763	74,037	58,735	56,092
	18	19	20	21	22	23	24
DAM NYCA	379,909	380,420	381,770	384,751	375,082	341,634	334,811
DAM NON-NYCA	23,863	37,745	37,209	29,948	18,260	10,830	20,238
DAM WHEELS	7,200	7,200	7,760	7,200	7,650	7,200	7,200
DAM VIRTUAL	29,667	30,768	24,507	22,952	21,730	26,242	20,771
BALANCING NYCA	(36,351)	(24,964)	(46,920)	(49,241)	(53,053)	(29,637)	(41,172)
BALANCING NON-NYCA	13,165	4,782	1,687	13,159	9,442	9,497	13,453
BALANCING WHEELS	700	600	(135)	1,350	(450)	0	(89)
BALANCING VIRTUAL	(29,667)	(30,768)	(24,507)	(22,952)	(21,730)	(26,242)	(20,771)
UFE/LOSSES	64,726	64,928	67,771	73,071	63,989	49,402	54,065
	25	26	27	28	29	30	
DAM NYCA	380,996	378,929	383,726	383,541	379,391	343,910	
DAM NON-NYCA	40,408	35,577	30,110	31,147	28,183	43,671	
DAM WHEELS	7,260	7,220	7,200	7,200	7,200	8,160	
DAM VIRTUAL	15,552	20,467	29,713	31,968	23,405	18,418	
BALANCING NYCA	(62,177)	(43,638)	(52,592)	(52,815)	(50,740)	(39,224)	
BALANCING NON-NYCA	14,686	8,434	12,663	21,025	13,373	11,350	
BALANCING WHEELS	(322)	(770)	0	0	0	(960)	
BALANCING VIRTUAL	(15,552)	(20,467)	(29,713)	(31,968)	(23,405)	(18,418)	
UFE/LOSSES	72,328	68,875	73,359	70,919	62,511	50,879	



SETTLEMENTS REPORT
April 2022 Close-Out Settlement
January 9, 2023

4-Month Settlement Adjustment – Market Residuals Analysis

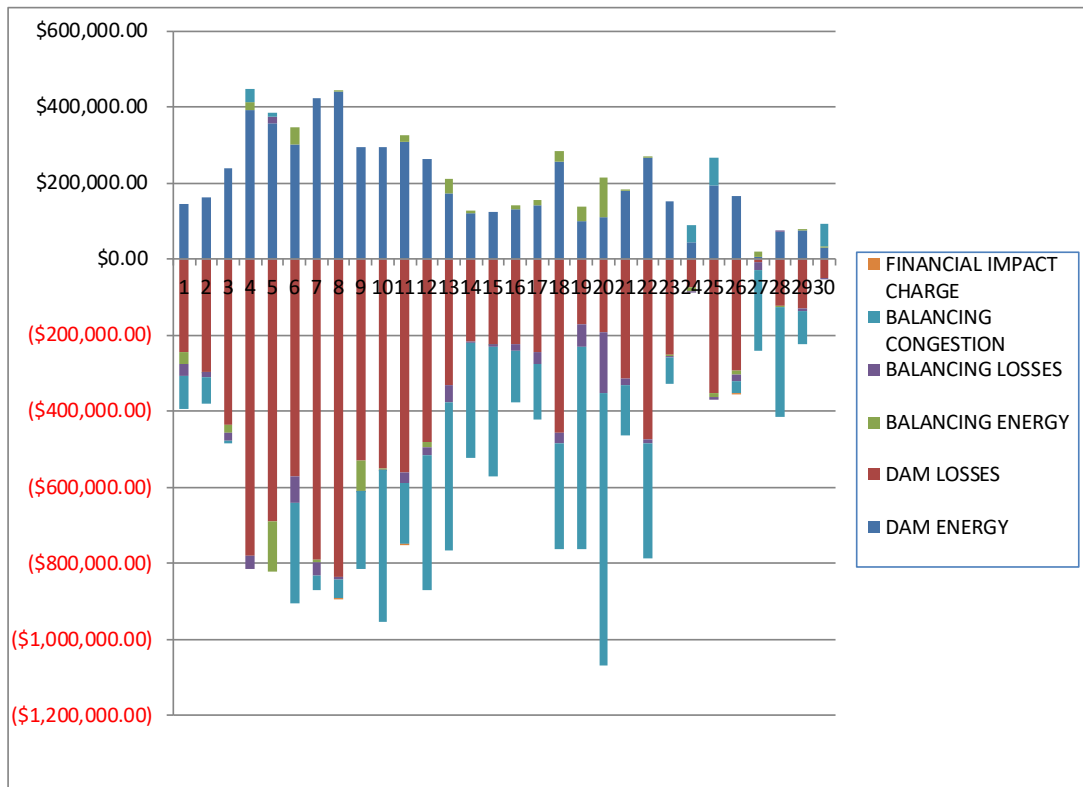
	MONDAY	TUESDAY	WEDNESDAY	THURSDAY	FRIDAY	SATURDAY	SUNDAY
					1	2	3
DAM ENERGY					\$144,598.99	\$161,227.19	\$237,896.68
DAM LOSSES					(\$244,639.20)	(\$296,296.68)	(\$437,676.45)
BALANCING ENERGY					(\$31,530.00)	(\$1,509.18)	(\$18,917.89)
BALANCING LOSSES					(\$31,560.93)	(\$12,233.30)	(\$22,074.76)
BALANCING CONGESTION					(\$86,014.92)	(\$69,715.73)	(\$6,089.68)
FINANCIAL IMPACT CHARGE					\$0.00	\$0.00	\$0.00
	4	5	6	7	8	9	10
DAM ENERGY	\$390,968.74	\$355,243.01	\$302,429.61	\$423,983.21	\$438,663.57	\$295,206.92	\$293,667.50
DAM LOSSES	(\$782,255.89)	(\$689,809.67)	(\$572,894.73)	(\$789,883.23)	(\$835,671.81)	(\$529,313.86)	(\$551,348.22)
BALANCING ENERGY	\$20,917.08	(\$131,198.41)	\$44,217.93	(\$8,946.38)	\$1,366.03	(\$79,337.55)	(\$4,272.63)
BALANCING LOSSES	(\$33,103.01)	\$20,186.60	(\$70,400.72)	(\$35,429.00)	(\$7,344.75)	(\$3,360.92)	(\$769.57)
BALANCING CONGESTION	\$36,734.73	\$9,499.61	(\$262,672.68)	(\$38,146.79)	(\$49,211.32)	(\$204,992.97)	(\$398,954.60)
FINANCIAL IMPACT CHARGE	\$0.00	\$0.00	\$0.00	\$0.00	(\$562.25)	\$0.00	\$0.00
	11	12	13	14	15	16	17
DAM ENERGY	\$306,386.85	\$263,656.31	\$170,744.20	\$119,703.06	\$123,201.70	\$131,274.74	\$142,640.44
DAM LOSSES	(\$560,106.03)	(\$481,794.82)	(\$330,921.72)	(\$218,538.05)	(\$223,880.14)	(\$225,199.14)	(\$246,431.90)
BALANCING ENERGY	\$18,915.52	(\$13,994.39)	\$41,353.22	\$8,489.92	(\$524.85)	\$9,954.42	\$11,613.85
BALANCING LOSSES	(\$27,962.02)	(\$20,486.58)	(\$46,802.94)	(\$2,430.29)	(\$7,459.67)	(\$16,283.35)	(\$31,027.01)
BALANCING CONGESTION	(\$160,569.64)	(\$356,317.38)	(\$390,152.97)	(\$303,221.68)	(\$339,477.67)	(\$135,270.11)	(\$144,390.45)
FINANCIAL IMPACT CHARGE	(\$506.10)	\$0.00	\$0.00	\$0.00	\$0.00	\$0.00	\$0.00
	18	19	20	21	22	23	24
DAM ENERGY	\$255,895.12	\$100,305.78	\$110,429.71	\$180,276.73	\$266,973.02	\$152,136.21	\$43,019.74
DAM LOSSES	(\$457,360.27)	(\$173,119.73)	(\$191,754.09)	(\$314,882.91)	(\$475,417.64)	(\$253,352.84)	(\$74,812.57)
BALANCING ENERGY	\$26,047.83	\$37,623.29	\$101,918.18	\$481.74	\$3,916.97	(\$2,907.16)	(\$11,583.44)
BALANCING LOSSES	(\$29,119.30)	(\$58,480.09)	(\$162,824.67)	(\$16,850.78)	(\$8,707.46)	(\$2,439.97)	(\$804.04)
BALANCING CONGESTION	(\$275,331.66)	(\$532,898.39)	(\$713,891.70)	(\$131,839.09)	(\$303,814.68)	(\$68,938.55)	\$44,769.81
FINANCIAL IMPACT CHARGE	\$0.00	\$0.00	\$0.00	\$0.00	\$0.00	\$0.00	\$0.00
	25	26	27	28	29	30	31
DAM ENERGY	\$192,725.96	\$163,669.40	\$5,400.49	\$71,892.71	\$76,532.46	\$28,312.71	\$0.00
DAM LOSSES	(\$353,844.48)	(\$294,807.17)	(\$9,796.68)	(\$124,541.88)	(\$128,589.20)	(\$48,649.49)	\$0.00
BALANCING ENERGY	(\$10,854.39)	(\$8,106.49)	\$13,398.88	(\$2,757.80)	\$2,893.03	\$4,017.97	\$0.00
BALANCING LOSSES	(\$6,816.02)	(\$19,897.00)	(\$19,240.99)	\$1,890.44	(\$8,065.62)	(\$6,726.94)	\$0.00
BALANCING CONGESTION	\$71,823.26	(\$31,458.87)	(\$211,212.89)	(\$289,319.93)	(\$88,287.40)	\$59,338.49	\$0.00
FINANCIAL IMPACT CHARGE	\$0.00	(\$1,527.96)	\$0.00	\$0.00	\$0.00	\$0.00	\$0.00



SETTLEMENTS REPORT
April 2022 Close-Out Settlement
January 9, 2023

Close-Out Settlement – Market Residuals Analysis

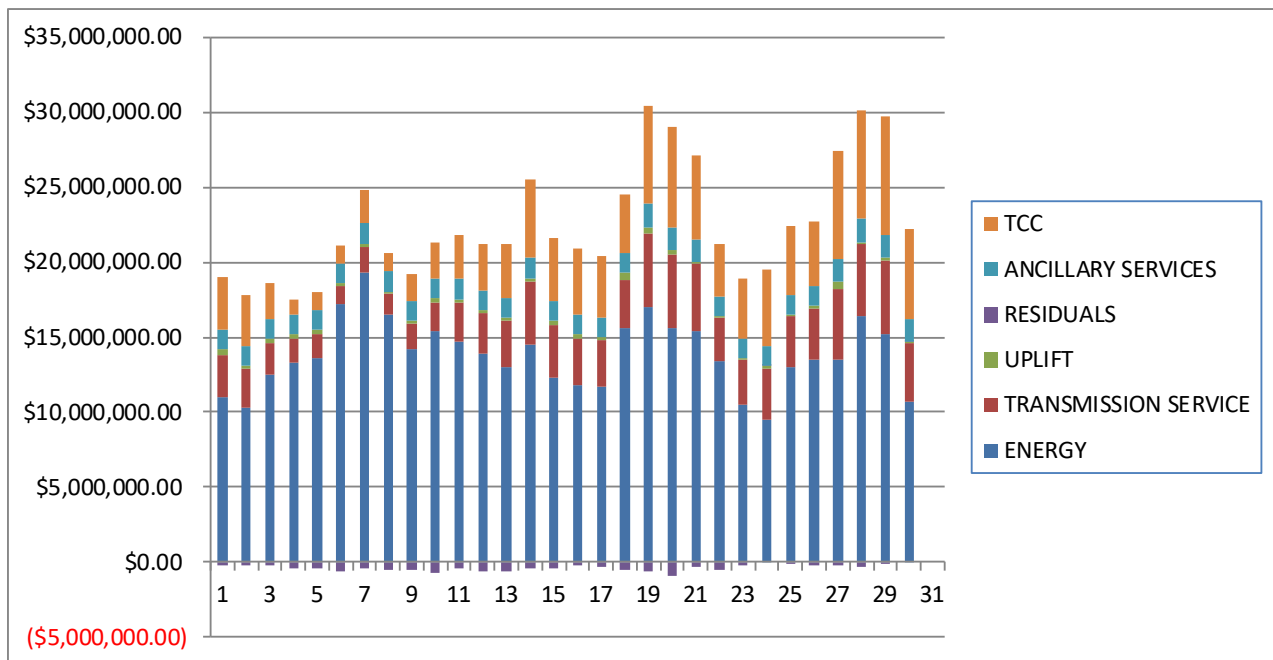
	MONDAY	TUESDAY	WEDNESDAY	THURSDAY	FRIDAY	SATURDAY	SUNDAY
					1	2	3
DAM ENERGY					\$144,598.99	\$161,227.19	\$237,896.69
DAM LOSSES					(\$244,639.20)	(\$296,296.68)	(\$437,676.45)
BALANCING ENERGY					(\$31,530.00)	(\$1,509.18)	(\$18,917.89)
BALANCING LOSSES					(\$31,560.94)	(\$12,233.30)	(\$22,074.77)
BALANCING CONGESTION					(\$86,014.92)	(\$69,715.73)	(\$6,089.68)
FINANCIAL IMPACT CHARGE					\$0.00	\$0.00	\$0.00
	4	5	6	7	8	9	10
DAM ENERGY	\$390,968.74	\$355,243.01	\$302,429.62	\$423,983.22	\$438,663.57	\$295,206.92	\$293,667.50
DAM LOSSES	(\$782,255.89)	(\$689,809.67)	(\$572,894.74)	(\$789,883.23)	(\$835,671.81)	(\$529,313.87)	(\$551,348.22)
BALANCING ENERGY	\$20,917.08	(\$131,198.41)	\$44,217.93	(\$8,946.38)	\$1,366.03	(\$79,337.56)	(\$4,272.63)
BALANCING LOSSES	(\$33,103.01)	\$20,186.60	(\$70,400.71)	(\$35,429.00)	(\$7,344.75)	(\$3,360.92)	(\$769.57)
BALANCING CONGESTION	\$36,734.73	\$9,499.62	(\$262,672.68)	(\$38,146.79)	(\$49,211.32)	(\$204,992.97)	(\$398,954.59)
FINANCIAL IMPACT CHARGE	\$0.00	\$0.00	\$0.00	\$0.00	(\$562.21)	\$0.00	\$0.00
	11	12	13	14	15	16	17
DAM ENERGY	\$306,386.85	\$263,656.31	\$170,744.20	\$119,703.06	\$123,201.70	\$131,274.74	\$142,640.44
DAM LOSSES	(\$560,106.03)	(\$481,794.81)	(\$330,921.71)	(\$218,538.06)	(\$223,880.14)	(\$225,199.14)	(\$246,431.90)
BALANCING ENERGY	\$18,915.53	(\$13,994.38)	\$41,353.22	\$8,489.93	\$524.85	\$9,954.42	\$11,613.86
BALANCING LOSSES	(\$27,962.02)	(\$20,486.58)	(\$46,802.93)	(\$2,430.29)	(\$7,459.67)	(\$16,283.35)	(\$31,027.01)
BALANCING CONGESTION	(\$160,569.64)	(\$356,317.38)	(\$390,152.97)	(\$303,221.68)	(\$339,477.66)	(\$135,270.11)	(\$144,390.45)
FINANCIAL IMPACT CHARGE	(\$506.15)	\$0.00	\$0.00	\$0.00	\$0.00	\$0.00	\$0.00
	18	19	20	21	22	23	24
DAM ENERGY	\$255,895.12	\$100,305.78	\$110,429.72	\$180,276.73	\$266,973.02	\$152,136.21	\$43,019.74
DAM LOSSES	(\$457,360.26)	(\$173,119.72)	(\$191,754.09)	(\$314,882.90)	(\$475,417.64)	(\$253,352.84)	(\$74,812.57)
BALANCING ENERGY	\$26,047.83	\$37,623.30	\$101,918.18	\$481.75	\$3,916.97	(\$2,907.16)	(\$11,583.44)
BALANCING LOSSES	(\$29,119.30)	(\$58,480.09)	(\$162,824.67)	(\$16,850.78)	(\$8,707.46)	(\$2,439.97)	(\$804.04)
BALANCING CONGESTION	(\$275,331.67)	(\$532,898.39)	(\$713,891.70)	(\$131,839.09)	(\$303,814.69)	(\$68,938.55)	\$44,769.81
FINANCIAL IMPACT CHARGE	\$0.00	\$0.00	\$0.00	\$0.00	\$0.00	\$0.00	\$0.00
	25	26	27	28	29	30	
DAM ENERGY	\$192,725.96	\$163,669.40	\$5,400.49	\$71,892.72	\$76,532.47	\$28,312.71	
DAM LOSSES	(\$353,844.48)	(\$294,807.17)	(\$9,796.68)	(\$124,541.89)	(\$128,589.20)	(\$48,649.48)	
BALANCING ENERGY	(\$10,854.39)	(\$8,106.49)	\$13,398.88	(\$2,757.80)	\$2,893.03	\$4,017.97	
BALANCING LOSSES	(\$6,816.02)	(\$19,897.00)	(\$19,240.99)	\$1,890.44	(\$8,065.62)	(\$6,726.94)	
BALANCING CONGESTION	\$71,823.26	(\$31,458.87)	(\$211,212.89)	(\$289,319.93)	(\$88,287.41)	\$59,338.49	
FINANCIAL IMPACT CHARGE	\$0.00	(\$1,527.90)	\$0.00	\$0.00	\$0.00	\$0.00	



SETTLEMENTS REPORT
 April 2022 Close-Out Settlement
 January 9, 2023

4-Month Settlement Adjustment – Market Costs Analysis

	MONDAY	TUESDAY	WEDNESDAY	THURSDAY	FRIDAY	SATURDAY	SUNDAY
					1	2	3
ENERGY					\$11,011,282.77	\$10,349,686.83	\$12,486,590.70
TRANSMISSION SERVICE					\$2,833,742.05	\$2,528,743.65	\$2,132,592.59
UPLIFT					\$367,015.23	\$267,672.18	\$240,133.23
RESIDUALS					(\$249,146.06)	(\$218,527.70)	(\$246,862.10)
ANCILLARY SERVICES					\$1,301,021.58	\$1,272,735.63	\$1,313,156.75
TCC					\$3,441,008.13	\$3,419,135.54	\$2,470,101.19
	4	5	6	7	8	9	10
ENERGY	\$13,320,394.43	\$13,594,959.58	\$17,230,311.25	\$19,261,439.92	\$16,452,755.74	\$14,232,681.72	\$15,405,159.04
TRANSMISSION SERVICE	\$1,545,627.63	\$1,584,103.39	\$1,197,354.25	\$1,741,248.23	\$1,412,226.90	\$1,660,048.63	\$1,937,532.07
UPLIFT	\$299,794.25	\$320,673.13	\$208,282.74	\$163,360.15	\$184,865.40	\$223,661.44	\$257,831.12
RESIDUALS	(\$366,738.35)	(\$436,078.86)	(\$559,320.59)	(\$448,422.19)	(\$452,760.53)	(\$521,798.38)	(\$661,677.52)
ANCILLARY SERVICES	\$1,313,751.79	\$1,329,199.93	\$1,293,199.40	\$1,428,335.51	\$1,314,654.31	\$1,260,571.94	\$1,306,984.20
TCC	\$1,057,409.45	\$1,205,731.95	\$1,126,840.23	\$2,187,022.90	\$1,251,571.63	\$1,866,809.92	\$2,407,425.34
	11	12	13	14	15	16	17
ENERGY	\$14,721,820.31	\$13,927,843.55	\$12,961,816.52	\$14,525,410.12	\$12,290,540.57	\$11,778,507.38	\$11,711,446.11
TRANSMISSION SERVICE	\$2,534,811.67	\$2,658,326.08	\$3,095,906.52	\$4,154,330.94	\$3,530,064.82	\$3,158,969.86	\$3,040,681.45
UPLIFT	\$274,305.66	\$242,030.11	\$249,623.90	\$221,402.49	\$258,878.78	\$297,677.78	\$279,697.89
RESIDUALS	(\$423,841.42)	(\$608,936.86)	(\$555,780.21)	(\$395,997.04)	(\$448,140.63)	(\$235,523.44)	(\$267,595.07)
ANCILLARY SERVICES	\$1,345,022.16	\$1,308,962.26	\$1,298,023.30	\$1,389,193.45	\$1,289,382.30	\$1,253,454.88	\$1,265,736.98
TCC	\$2,953,172.80	\$3,025,762.68	\$3,631,554.34	\$5,240,430.84	\$4,252,590.63	\$4,366,147.74	\$4,124,232.61
	18	19	20	21	22	23	24
ENERGY	\$15,577,028.48	\$17,025,724.26	\$15,559,291.51	\$15,438,701.61	\$13,411,629.82	\$10,521,986.41	\$9,468,439.04
TRANSMISSION SERVICE	\$3,258,765.58	\$4,910,029.65	\$4,928,284.12	\$4,414,823.61	\$2,840,337.21	\$2,959,609.33	\$3,469,160.91
UPLIFT	\$441,653.64	\$333,722.06	\$314,991.13	\$190,009.42	\$148,343.59	\$77,059.42	\$115,631.38
RESIDUALS	(\$479,868.28)	(\$626,569.14)	(\$856,122.57)	(\$282,814.31)	(\$517,049.79)	(\$175,502.31)	\$589.50
ANCILLARY SERVICES	\$1,370,076.15	\$1,590,121.24	\$1,505,724.91	\$1,471,392.46	\$1,349,129.20	\$1,318,337.11	\$1,379,400.10
TCC	\$3,893,245.41	\$6,556,489.13	\$6,736,269.36	\$5,557,035.18	\$3,484,390.19	\$3,984,298.86	\$5,027,386.03
	25	26	27	28	29	30	31
ENERGY	\$13,004,740.25	\$13,548,559.95	\$13,495,722.08	\$16,401,199.63	\$15,160,546.62	\$10,663,815.97	\$0.00
TRANSMISSION SERVICE	\$3,412,369.78	\$3,354,157.80	\$4,745,281.07	\$4,797,649.72	\$4,968,842.35	\$3,968,308.73	\$0.00
UPLIFT	\$60,446.55	\$176,371.30	\$422,378.48	\$119,102.68	\$131,543.81	\$69,476.26	\$0.00
RESIDUALS	(\$106,965.67)	(\$192,128.09)	(\$221,451.19)	(\$342,836.46)	(\$145,516.73)	\$36,292.74	\$0.00
ANCILLARY SERVICES	\$1,364,528.41	\$1,351,160.51	\$1,492,433.76	\$1,554,818.00	\$1,570,778.51	\$1,416,081.77	\$0.00
TCC	\$4,601,113.88	\$4,252,311.89	\$7,206,364.17	\$7,186,783.06	\$7,886,155.71	\$6,010,184.27	\$0.00



SETTLEMENTS REPORT
April 2022 Close-Out Settlement
January 9, 2023

Close-Out Settlement – Market Costs Analysis

	MONDAY	TUESDAY	WEDNESDAY	THURSDAY	FRIDAY	SATURDAY	SUNDAY
					1	2	3
ENERGY					\$11,011,282.90	\$10,349,686.81	\$12,486,590.74
TRANSMISSION SERVICE					\$2,833,624.70	\$2,528,638.83	\$2,132,500.80
UPLIFT					\$367,015.23	\$267,672.19	\$240,133.21
RESIDUALS					(\$249,146.07)	(\$218,527.70)	(\$246,862.10)
ANCILLARY SERVICES					\$1,300,904.04	\$1,272,630.60	\$1,313,064.82
TCC					\$3,441,008.13	\$3,419,135.54	\$2,470,101.19
	4	5	6	7	8	9	10
ENERGY	\$13,320,394.27	\$13,594,959.67	\$17,230,311.33	\$19,261,439.83	\$16,452,755.61	\$14,232,681.40	\$15,405,159.02
TRANSMISSION SERVICE	\$1,545,627.61	\$1,584,078.82	\$1,197,300.09	\$1,741,218.14	\$1,412,226.89	\$1,659,970.94	\$1,937,491.76
UPLIFT	\$299,794.25	\$320,673.15	\$208,282.74	\$163,360.15	\$184,865.40	\$223,661.44	\$257,831.14
RESIDUALS	(\$366,738.35)	(\$436,078.85)	(\$559,320.58)	(\$448,422.18)	(\$452,760.49)	(\$521,798.40)	(\$661,677.51)
ANCILLARY SERVICES	\$1,313,751.74	\$1,329,175.30	\$1,293,145.15	\$1,428,305.37	\$1,314,654.27	\$1,260,494.11	\$1,306,943.83
TCC	\$1,057,409.45	\$1,205,731.95	\$1,126,840.23	\$2,187,022.90	\$1,251,571.63	\$1,866,809.92	\$2,407,425.34
	11	12	13	14	15	16	17
ENERGY	\$14,721,820.34	\$13,927,843.19	\$12,961,816.70	\$14,525,410.44	\$12,290,540.49	\$11,778,507.49	\$11,711,445.97
TRANSMISSION SERVICE	\$2,534,735.77	\$2,658,249.60	\$3,095,829.93	\$4,154,254.11	\$3,529,951.97	\$3,158,837.35	\$3,040,548.23
UPLIFT	\$274,305.65	\$242,030.12	\$249,623.91	\$221,402.57	\$258,878.78	\$297,677.78	\$279,697.88
RESIDUALS	(\$423,841.46)	(\$608,936.84)	(\$555,780.19)	(\$395,997.04)	(\$448,140.62)	(\$235,523.44)	(\$267,595.06)
ANCILLARY SERVICES	\$1,344,946.13	\$1,308,885.62	\$1,297,946.57	\$1,389,116.48	\$1,289,269.25	\$1,253,322.13	\$1,265,603.53
TCC	\$2,953,172.80	\$3,025,762.68	\$3,631,554.34	\$5,240,430.84	\$4,252,590.63	\$4,366,147.74	\$4,124,232.61
	18	19	20	21	22	23	24
ENERGY	\$15,577,028.66	\$17,025,724.60	\$15,559,291.38	\$15,438,701.81	\$13,411,629.63	\$10,521,986.52	\$9,468,439.29
TRANSMISSION SERVICE	\$3,258,632.76	\$4,909,896.18	\$4,928,151.48	\$4,414,690.77	\$2,840,337.17	\$2,959,609.31	\$3,469,160.92
UPLIFT	\$441,653.65	\$333,722.07	\$314,991.15	\$190,009.44	\$148,343.59	\$77,059.42	\$115,631.38
RESIDUALS	(\$479,868.28)	(\$626,569.12)	(\$856,122.56)	(\$282,814.29)	(\$517,049.80)	(\$175,502.31)	\$589.50
ANCILLARY SERVICES	\$1,369,943.10	\$1,589,987.54	\$1,505,591.99	\$1,471,259.39	\$1,349,129.14	\$1,318,337.08	\$1,379,400.11
TCC	\$3,893,245.41	\$6,556,489.13	\$6,736,269.36	\$5,557,035.18	\$3,484,390.19	\$3,984,298.86	\$5,027,386.03
	25	26	27	28	29	30	
ENERGY	\$13,004,740.03	\$13,548,559.92	\$13,495,722.01	\$16,401,199.56	\$15,160,546.40	\$10,663,816.12	
TRANSMISSION SERVICE	\$3,412,369.79	\$3,354,157.80	\$4,745,281.29	\$4,797,649.98	\$4,968,842.66	\$3,968,308.95	
UPLIFT	\$60,446.55	\$176,371.30	\$422,378.48	\$119,102.68	\$131,543.80	\$69,476.26	
RESIDUALS	(\$106,965.67)	(\$192,128.03)	(\$221,451.19)	(\$342,836.46)	(\$145,516.73)	\$36,292.75	
ANCILLARY SERVICES	\$1,364,528.43	\$1,351,160.51	\$1,492,434.13	\$1,554,818.44	\$1,570,779.02	\$1,416,082.12	
TCC	\$4,601,113.88	\$4,252,311.89	\$7,206,364.17	\$7,186,783.06	\$7,886,155.71	\$6,010,184.27	

