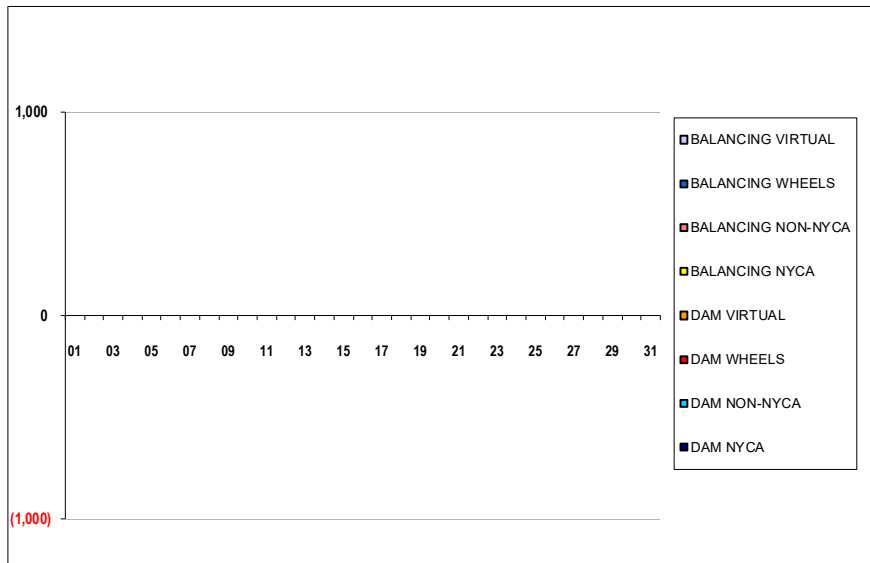


SETTLEMENTS REPORT
 May 2022 Close-Out Settlement
 February 7, 2023

Close-Out Settlement – Market Supply Delta Analysis

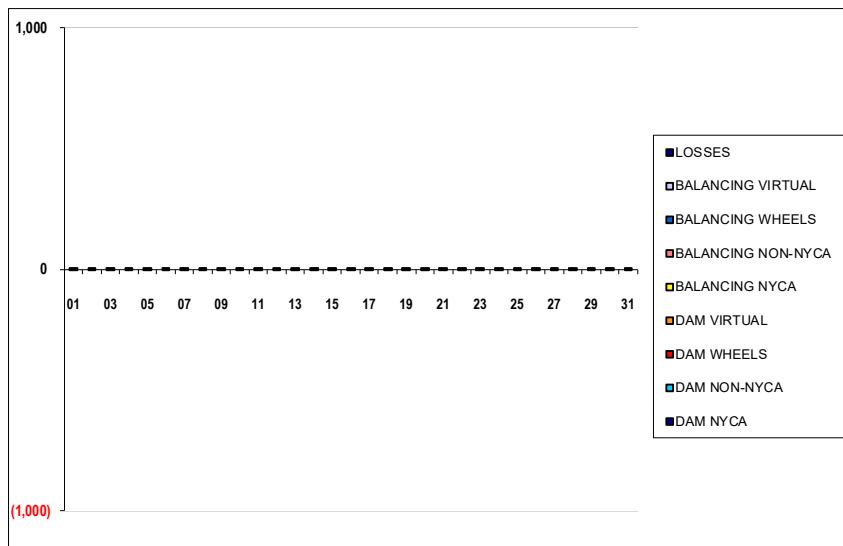
	MONDAY	TUESDAY	WEDNESDAY	THURSDAY	FRIDAY	SATURDAY	SUNDAY
DAM NYCA							1
DAM NON-NYCA							0
DAM WHEELS							0
DAM VIRTUAL							0
BALANCING NYCA							0
BALANCING NON-NYCA							0
BALANCING WHEELS							0
BALANCING VIRTUAL							0
	2	3	4	5	6	7	8
DAM NYCA	0	0	0	0	0	0	0
DAM NON-NYCA	0	0	0	0	0	0	0
DAM WHEELS	0	0	0	0	0	0	0
DAM VIRTUAL	0	0	0	0	0	0	0
BALANCING NYCA	0	0	0	0	0	0	0
BALANCING NON-NYCA	0	0	0	0	0	0	0
BALANCING WHEELS	0	0	0	0	0	0	0
BALANCING VIRTUAL	0	0	0	0	0	0	0
	9	10	11	12	13	14	15
DAM NYCA	0	0	0	0	0	0	0
DAM NON-NYCA	0	0	0	0	0	0	0
DAM WHEELS	0	0	0	0	0	0	0
DAM VIRTUAL	0	0	0	0	0	0	0
BALANCING NYCA	0	0	0	0	0	0	0
BALANCING NON-NYCA	0	0	0	0	0	0	0
BALANCING WHEELS	0	0	0	0	0	0	0
BALANCING VIRTUAL	0	0	0	0	0	0	0
	16	17	18	19	20	21	22
DAM NYCA	0	0	0	0	0	0	0
DAM NON-NYCA	0	0	0	0	0	0	0
DAM WHEELS	0	0	0	0	0	0	0
DAM VIRTUAL	0	0	0	0	0	0	0
BALANCING NYCA	0	0	0	0	0	0	0
BALANCING NON-NYCA	0	0	0	0	0	0	0
BALANCING WHEELS	0	0	0	0	0	0	0
BALANCING VIRTUAL	0	0	0	0	0	0	0
	23	24	25	26	27	28	29
DAM NYCA	0	0	0	0	0	0	0
DAM NON-NYCA	0	0	0	0	0	0	0
DAM WHEELS	0	0	0	0	0	0	0
DAM VIRTUAL	0	0	0	0	0	0	0
BALANCING NYCA	0	0	0	0	0	0	0
BALANCING NON-NYCA	0	0	0	0	0	0	0
BALANCING WHEELS	0	0	0	0	0	0	0
BALANCING VIRTUAL	0	0	0	0	0	0	0
	30	31					
DAM NYCA	0	0					
DAM NON-NYCA	0	0					
DAM WHEELS	0	0					
DAM VIRTUAL	0	0					
BALANCING NYCA	0	0					
BALANCING NON-NYCA	0	0					
BALANCING WHEELS	0	0					
BALANCING VIRTUAL	0	0					



SETTLEMENTS REPORT
 May 2022 Close-Out Settlement
 February 7, 2023

Close-Out Settlement – Market Withdrawals Delta Analysis

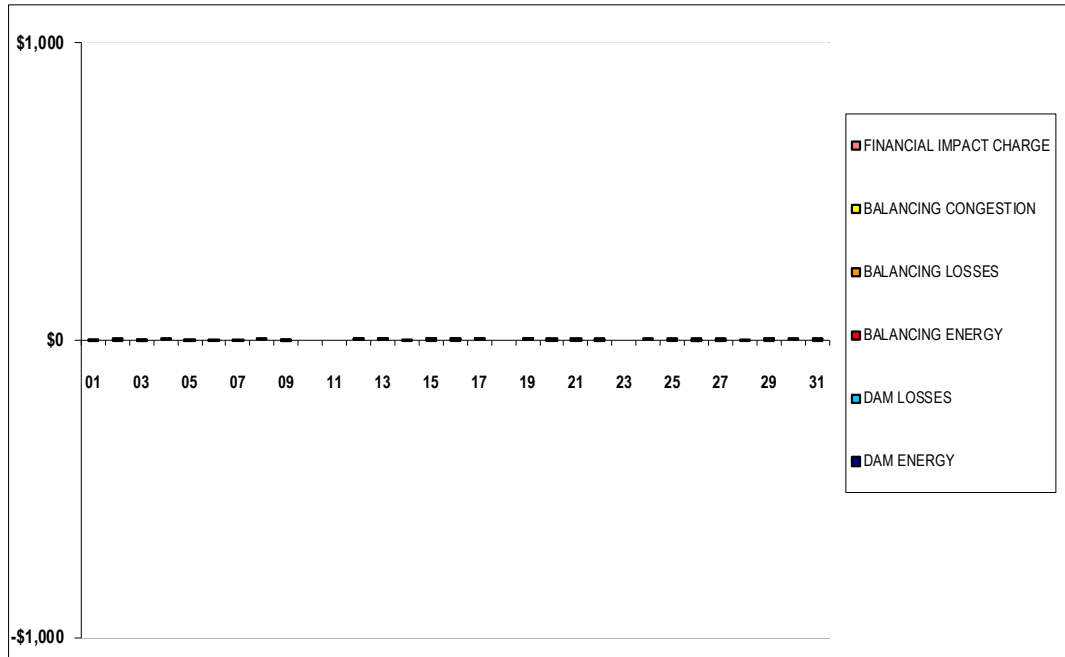
	MONDAY	TUESDAY	WEDNESDAY	THURSDAY	FRIDAY	SATURDAY	SUNDAY
DAM NYCA							1
DAM NON-NYCA							0
DAM WHEELS							0
DAM VIRTUAL							0
BALANCING NYCA							(0)
BALANCING NON-NYCA							0
BALANCING WHEELS							0
BALANCING VIRTUAL							0
UFE/LOSSES							0
	2	3	4	5	6	7	8
DAM NYCA	0	0	0	0	0	0	0
DAM NON-NYCA	0	0	0	0	0	0	0
DAM WHEELS	0	0	0	0	0	0	0
DAM VIRTUAL	0	0	0	0	0	0	0
BALANCING NYCA	0	(0)	0	0	(0)	0	(0)
BALANCING NON-NYCA	0	0	0	0	0	0	0
BALANCING WHEELS	0	0	0	0	0	0	0
BALANCING VIRTUAL	0	0	0	0	0	0	0
UFE/LOSSES	(0)	0	(0)	(0)	0	(0)	0
	9	10	11	12	13	14	15
DAM NYCA	0	0	0	0	0	0	0
DAM NON-NYCA	0	0	0	0	0	0	0
DAM WHEELS	0	0	0	0	0	0	0
DAM VIRTUAL	0	0	0	0	0	0	0
BALANCING NYCA	(0)	(0)	(0)	0	(0)	0	0
BALANCING NON-NYCA	0	0	0	0	0	0	0
BALANCING WHEELS	0	0	0	0	0	0	0
BALANCING VIRTUAL	0	0	0	0	0	0	0
UFE/LOSSES	0	0	0	(0)	0	(0)	(0)
	16	17	18	19	20	21	22
DAM NYCA	0	0	0	0	0	0	0
DAM NON-NYCA	0	0	0	0	0	0	0
DAM WHEELS	0	0	0	0	0	0	0
DAM VIRTUAL	0	0	0	0	0	0	0
BALANCING NYCA	0	0	0	0	(0)	0	(0)
BALANCING NON-NYCA	0	0	0	0	0	0	0
BALANCING WHEELS	0	0	0	0	0	0	0
BALANCING VIRTUAL	0	0	0	0	0	0	0
UFE/LOSSES	(0)	(0)	(0)	(0)	0	(0)	0
	23	24	25	26	27	28	29
DAM NYCA	0	0	0	0	0	0	0
DAM NON-NYCA	0	0	0	0	0	0	0
DAM WHEELS	0	0	0	0	0	0	0
DAM VIRTUAL	0	0	0	0	0	0	0
BALANCING NYCA	(0)	(0)	0	0	(0)	(0)	0
BALANCING NON-NYCA	0	0	0	0	0	0	0
BALANCING WHEELS	0	0	0	0	0	0	0
BALANCING VIRTUAL	0	0	0	0	0	0	0
UFE/LOSSES	0	0	(0)	(0)	0	0	(0)
	30	31					
DAM NYCA	0	0					
DAM NON-NYCA	0	0					
DAM WHEELS	0	0					
DAM VIRTUAL	0	0					
BALANCING NYCA	0	(0)					
BALANCING NON-NYCA	0	0					
BALANCING WHEELS	0	0					
BALANCING VIRTUAL	0	0					
UFE/LOSSES	(0)	0					



SETTLEMENTS REPORT
 May 2022 Close-Out Settlement
 February 7, 2023

Close-Out Settlement – Market Residuals Delta Analysis

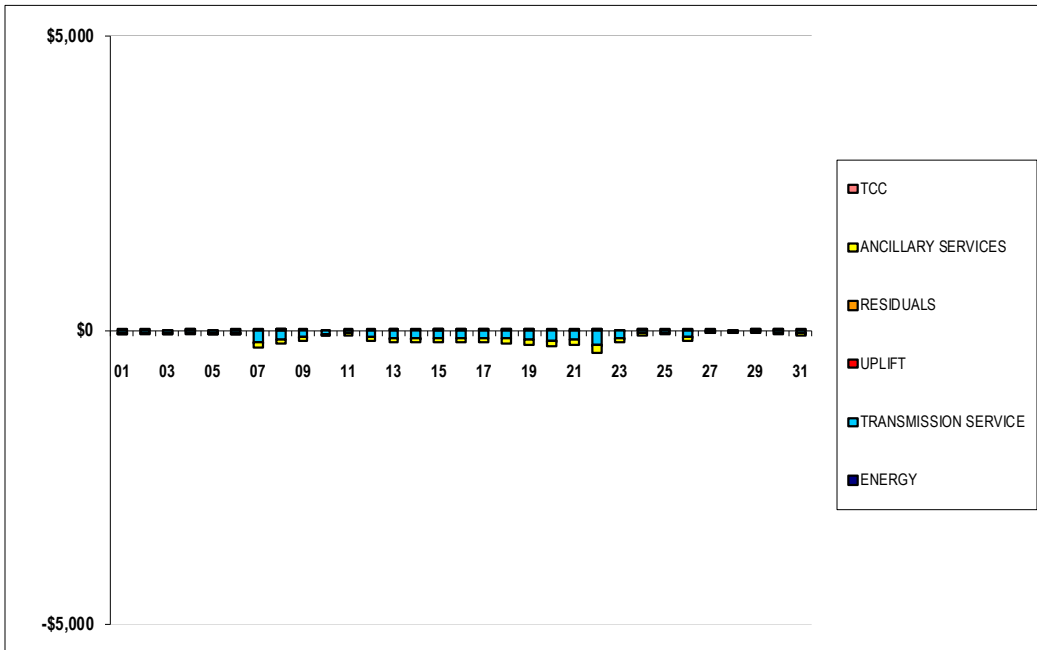
	MONDAY	TUESDAY	WEDNESDAY	THURSDAY	FRIDAY	SATURDAY	SUNDAY
							1
DAM ENERGY							\$0.00
DAM LOSSES							\$0.00
BALANCING ENERGY							(\$0.01)
BALANCING LOSSES							\$0.00
BALANCING CONGESTION							(\$0.01)
FINANCIAL IMPACT CHARGE							\$0.00
	2	3	4	5	6	7	8
DAM ENERGY	\$0.00	\$0.00	\$0.00	\$0.00	(\$0.01)	\$0.00	\$0.00
DAM LOSSES	(\$0.01)	\$0.00	\$0.00	(\$0.01)	\$0.00	\$0.00	\$0.01
BALANCING ENERGY	\$0.01	(\$0.01)	\$0.00	\$0.00	\$0.00	\$0.00	\$0.00
BALANCING LOSSES	\$0.00	\$0.00	\$0.01	\$0.00	\$0.00	\$0.00	\$0.00
BALANCING CONGESTION	\$0.00	(\$0.01)	\$0.00	(\$0.01)	\$0.00	(\$0.01)	\$0.00
FINANCIAL IMPACT CHARGE	\$0.00	(\$0.05)	\$0.00	\$0.00	\$0.00	\$0.00	\$0.00
	9	10	11	12	13	14	15
DAM ENERGY	(\$0.01)	\$0.00	\$0.00	\$0.00	\$0.01	\$0.00	(\$0.01)
DAM LOSSES	\$0.00	\$0.00	\$0.00	\$0.01	\$0.00	\$0.00	\$0.01
BALANCING ENERGY	\$0.00	\$0.00	\$0.00	\$0.00	\$0.01	\$0.00	\$0.00
BALANCING LOSSES	(\$0.01)	\$0.00	\$0.00	\$0.01	\$0.01	\$0.00	\$0.01
BALANCING CONGESTION	(\$0.01)	\$0.00	\$0.00	\$0.01	\$0.00	(\$0.01)	\$0.00
FINANCIAL IMPACT CHARGE	\$0.00	\$0.00	\$0.00	\$0.00	\$0.00	\$0.00	\$0.00
	16	17	18	19	20	21	22
DAM ENERGY	\$0.01	\$0.00	\$0.00	\$0.00	\$0.00	\$0.01	\$0.01
DAM LOSSES	\$0.00	\$0.00	\$0.00	\$0.00	\$0.00	\$0.00	(\$0.01)
BALANCING ENERGY	\$0.01	\$0.01	\$0.00	\$0.01	\$0.01	\$0.00	\$0.00
BALANCING LOSSES	\$0.01	\$0.01	\$0.00	\$0.01	(\$0.01)	(\$0.01)	\$0.00
BALANCING CONGESTION	(\$0.01)	\$0.00	\$0.00	\$0.01	\$0.00	\$0.00	\$0.00
FINANCIAL IMPACT CHARGE	\$0.00	\$0.00	\$0.00	\$0.00	\$0.00	\$0.00	(\$0.03)
	23	24	25	26	27	28	29
DAM ENERGY	\$0.00	\$0.00	(\$0.01)	(\$0.01)	(\$0.01)	(\$0.01)	(\$0.01)
DAM LOSSES	\$0.00	\$0.00	\$0.00	\$0.00	\$0.00	\$0.00	\$0.01
BALANCING ENERGY	\$0.00	\$0.00	\$0.00	\$0.00	\$0.00	\$0.00	\$0.01
BALANCING LOSSES	\$0.00	\$0.00	\$0.01	(\$0.01)	\$0.01	\$0.00	\$0.00
BALANCING CONGESTION	\$0.00	\$0.00	\$0.00	(\$0.01)	(\$0.01)	\$0.00	\$0.00
FINANCIAL IMPACT CHARGE	\$0.00	\$0.02	\$0.00	\$0.04	\$0.00	\$0.00	\$0.00
	30	31					
DAM ENERGY	\$0.00	\$0.00					
DAM LOSSES	\$0.00	\$0.01					
BALANCING ENERGY	\$0.00	\$0.00					
BALANCING LOSSES	\$0.01	(\$0.01)					
BALANCING CONGESTION	\$0.00	\$0.00					
FINANCIAL IMPACT CHARGE	\$0.00	\$0.00					



SETTLEMENTS REPORT
 May 2022 Close-Out Settlement
 February 7, 2023

Close-Out Settlement – Market Costs Delta Analysis

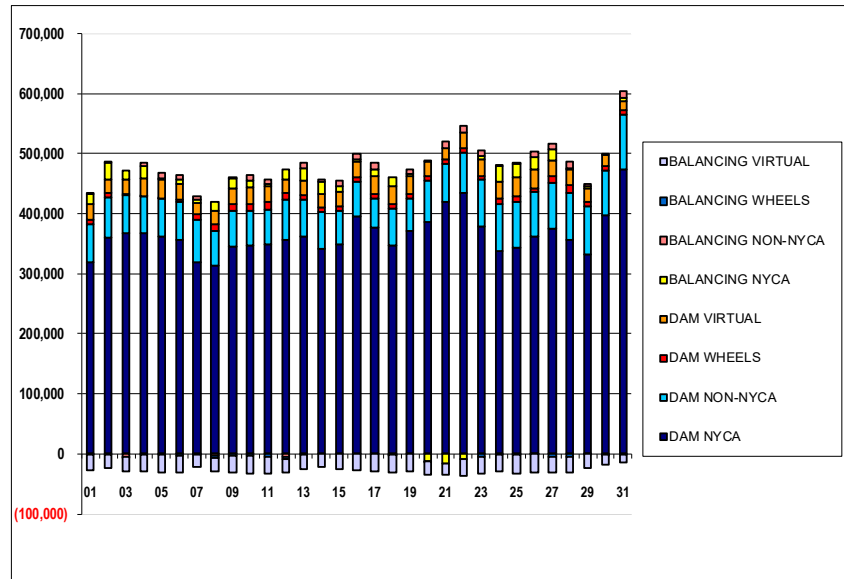
	MONDAY	TUESDAY	WEDNESDAY	THURSDAY	FRIDAY	SATURDAY	SUNDAY
							1
ENERGY							\$0.20
TRANSMISSION SERVICE							(\$49.82)
UPLIFT							\$0.00
RESIDUALS							(\$0.02)
ANCILLARY SERVICES							(\$23.91)
TCC							\$0.00
	2	3	4	5	6	7	8
ENERGY	\$0.02	(\$0.26)	(\$0.38)	(\$0.27)	\$0.33	(\$0.23)	\$0.36
TRANSMISSION SERVICE	(\$50.50)	(\$47.22)	(\$47.41)	(\$46.61)	(\$49.66)	(\$205.95)	(\$157.43)
UPLIFT	\$0.00	\$0.00	\$0.02	(\$0.02)	(\$0.01)	\$0.01	\$0.01
RESIDUALS	\$0.00	(\$0.07)	\$0.01	(\$0.02)	(\$0.01)	(\$0.01)	\$0.01
ANCILLARY SERVICES	(\$24.23)	(\$22.68)	(\$22.75)	(\$22.37)	(\$23.82)	(\$98.84)	(\$75.53)
TCC	\$0.00	\$0.00	\$0.00	\$0.00	\$0.00	\$0.00	\$0.00
	9	10	11	12	13	14	15
ENERGY	\$0.02	(\$0.01)	(\$0.28)	(\$0.27)	\$0.36	\$0.20	\$0.11
TRANSMISSION SERVICE	(\$116.29)	(\$66.78)	(\$55.68)	(\$124.31)	(\$141.65)	(\$145.67)	(\$137.59)
UPLIFT	\$0.00	(\$0.03)	\$0.11	\$0.00	(\$0.06)	(\$0.01)	\$0.01
RESIDUALS	(\$0.03)	\$0.00	\$0.00	\$0.03	\$0.03	(\$0.01)	\$0.01
ANCILLARY SERVICES	(\$55.81)	(\$32.04)	(\$26.74)	(\$59.65)	(\$67.96)	(\$69.91)	(\$66.05)
TCC	\$0.00	\$0.00	\$0.00	\$0.00	\$0.00	\$0.00	\$0.00
	16	17	18	19	20	21	22
ENERGY	\$0.25	\$0.18	\$0.21	\$0.24	\$0.17	(\$0.20)	\$0.34
TRANSMISSION SERVICE	(\$135.74)	(\$132.19)	(\$146.16)	(\$164.40)	(\$177.78)	(\$166.58)	(\$257.82)
UPLIFT	\$0.00	\$0.00	\$0.01	\$0.00	(\$0.02)	\$0.01	\$0.07
RESIDUALS	\$0.02	\$0.02	\$0.00	\$0.03	\$0.00	\$0.00	(\$0.03)
ANCILLARY SERVICES	(\$65.13)	(\$63.44)	(\$70.12)	(\$78.89)	(\$85.31)	(\$79.94)	(\$123.72)
TCC	\$0.00	\$0.00	\$0.00	\$0.00	\$0.00	\$0.00	\$0.00
	23	24	25	26	27	28	29
ENERGY	(\$0.37)	\$0.66	\$0.31	(\$0.12)	(\$0.02)	(\$0.06)	\$0.07
TRANSMISSION SERVICE	(\$138.89)	(\$55.29)	(\$44.82)	(\$115.67)	(\$29.03)	(\$28.44)	(\$30.65)
UPLIFT	(\$0.01)	\$0.00	\$0.00	(\$0.01)	\$0.01	\$0.00	\$0.00
RESIDUALS	\$0.00	\$0.02	\$0.00	\$0.01	(\$0.01)	(\$0.01)	\$0.01
ANCILLARY SERVICES	(\$66.65)	(\$26.53)	(\$21.48)	(\$55.53)	(\$13.94)	(\$13.64)	(\$14.71)
TCC	\$0.00	\$0.00	\$0.00	\$0.00	\$0.00	\$0.00	\$0.00
	30	31					
ENERGY	(\$0.36)	\$0.19					
TRANSMISSION SERVICE	(\$35.72)	(\$56.03)					
UPLIFT	\$0.01	(\$0.02)					
RESIDUALS	\$0.01	\$0.00					
ANCILLARY SERVICES	(\$17.15)	(\$26.88)					
TCC	\$0.00	\$0.00					



SETTLEMENTS REPORT
 May 2022 Close-Out Settlement
 February 7, 2023

4-Month Settlement Adjustment – Market Supply Analysis

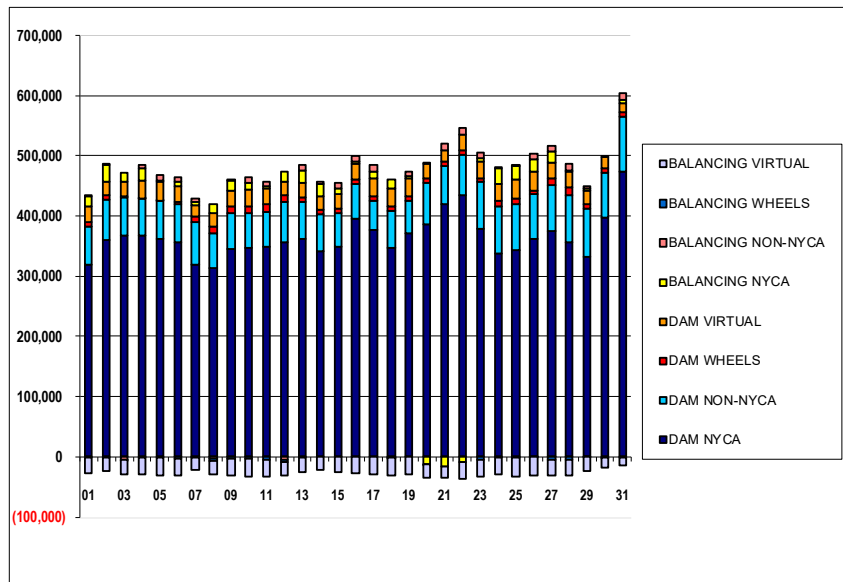
	MONDAY	TUESDAY	WEDNESDAY	THURSDAY	FRIDAY	SATURDAY	SUNDAY
							1
DAM NYCA							319,179
DAM NON-NYCA							63,006
DAM WHEELS							8,105
DAM VIRTUAL							26,042
BALANCING NYCA							16,217
BALANCING NON-NYCA							1,888
BALANCING WHEELS							(905)
BALANCING VIRTUAL							(26,042)
	2	3	4	5	6	7	8
DAM NYCA	360,944	367,394	366,699	362,335	356,821	318,918	313,597
DAM NON-NYCA	65,297	63,483	62,134	62,402	62,644	71,402	57,552
DAM WHEELS	7,760	2,562	502	1,269	3,432	8,252	11,370
DAM VIRTUAL	23,701	23,265	29,336	30,389	27,465	19,687	22,601
BALANCING NYCA	26,325	15,454	21,151	2,984	7,491	5,644	15,032
BALANCING NON-NYCA	2,748	(5,205)	5,135	8,501	6,753	4,698	(2,793)
BALANCING WHEELS	(560)	(462)	(502)	(1,269)	(2,832)	(1,052)	(4,170)
BALANCING VIRTUAL	(23,701)	(23,265)	(29,336)	(30,389)	(27,465)	(19,687)	(22,601)
	9	10	11	12	13	14	15
DAM NYCA	345,434	346,497	349,176	357,232	362,689	341,171	349,842
DAM NON-NYCA	59,289	58,907	57,102	65,881	60,336	62,098	54,560
DAM WHEELS	10,607	11,083	12,805	11,175	7,650	7,200	7,200
DAM VIRTUAL	27,129	28,234	27,574	21,928	24,618	22,116	25,072
BALANCING NYCA	15,780	10,580	3,627	16,594	20,841	20,292	9,746
BALANCING NON-NYCA	87	8,576	6,941	(4,983)	8,342	4,470	8,881
BALANCING WHEELS	(3,407)	(3,883)	(5,455)	(3,975)	(270)	0	0
BALANCING VIRTUAL	(27,129)	(28,234)	(27,574)	(21,928)	(24,618)	(22,116)	(25,072)
	16	17	18	19	20	21	22
DAM NYCA	395,927	377,287	346,557	370,903	386,683	420,493	434,373
DAM NON-NYCA	57,273	48,116	62,612	54,908	68,621	63,458	66,732
DAM WHEELS	7,200	7,200	7,400	7,200	7,315	7,200	7,200
DAM VIRTUAL	27,066	29,720	28,350	29,416	23,724	18,610	27,640
BALANCING NYCA	2,906	11,425	15,238	3,876	(11,369)	(15,273)	(8,457)
BALANCING NON-NYCA	9,292	10,889	(1,935)	7,179	2,981	10,150	9,983
BALANCING WHEELS	0	0	(50)	0	(115)	0	0
BALANCING VIRTUAL	(27,066)	(29,720)	(28,350)	(29,416)	(23,724)	(18,610)	(27,640)
	23	24	25	26	27	28	29
DAM NYCA	378,310	336,932	343,930	362,721	374,425	355,764	332,441
DAM NON-NYCA	77,804	79,878	76,493	73,015	76,644	79,102	79,072
DAM WHEELS	7,200	8,251	9,043	7,248	11,226	12,796	7,298
DAM VIRTUAL	27,828	27,875	31,776	31,510	26,942	25,546	23,614
BALANCING NYCA	4,786	27,138	22,506	20,461	17,077	2,816	3,066
BALANCING NON-NYCA	9,224	843	689	9,250	10,262	11,084	3,091
BALANCING WHEELS	(4,435)	(1,051)	(1,843)	(48)	(4,026)	(5,596)	(98)
BALANCING VIRTUAL	(27,828)	(27,875)	(31,776)	(31,510)	(26,942)	(25,546)	(23,614)
	30	31					
DAM NYCA	396,830	473,048					
DAM NON-NYCA	75,257	91,802					
DAM WHEELS	7,295	7,876					
DAM VIRTUAL	17,778	13,951					
BALANCING NYCA	(838)	5,288					
BALANCING NON-NYCA	865	12,472					
BALANCING WHEELS	(95)	(676)					
BALANCING VIRTUAL	(17,778)	(13,951)					



SETTLEMENTS REPORT
 May 2022 Close-Out Settlement
 February 7, 2023

Close-Out Settlement – Market Supply Analysis

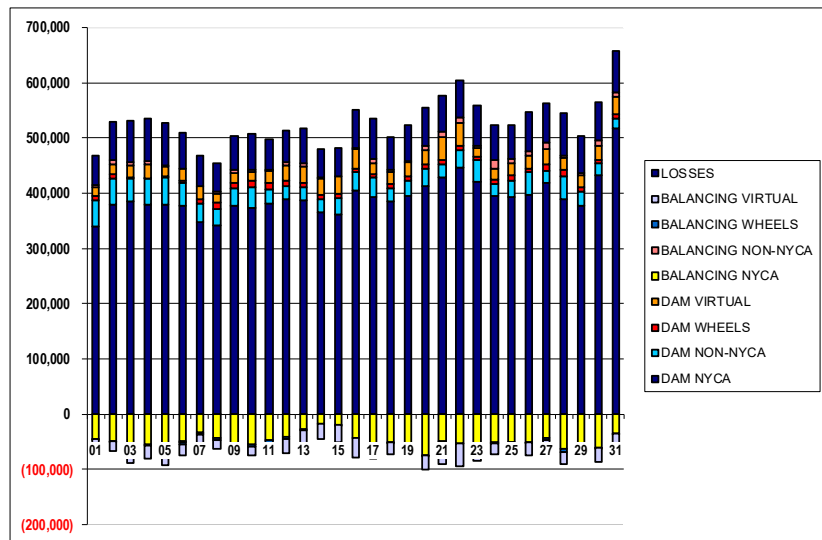
	MONDAY	TUESDAY	WEDNESDAY	THURSDAY	FRIDAY	SATURDAY	SUNDAY
DAM NYCA							1
DAM NON-NYCA							319,179
DAM WHEELS							63,006
DAM VIRTUAL							8,105
BALANCING NYCA							26,042
BALANCING NON-NYCA							16,217
BALANCING WHEELS							1,888
BALANCING VIRTUAL							(905)
							(26,042)
	2	3	4	5	6	7	8
DAM NYCA	360,944	367,394	366,699	362,335	366,821	318,918	313,597
DAM NON-NYCA	65,297	63,483	62,134	62,402	62,644	62,644	71,402
DAM WHEELS	7,760	2,562	502	1,269	3,432	8,252	11,370
DAM VIRTUAL	23,701	23,265	29,336	30,389	27,465	19,687	22,601
BALANCING NYCA	26,325	15,454	21,151	2,984	7,491	5,644	15,032
BALANCING NON-NYCA	2,748	(5,205)	5,135	8,501	6,753	4,698	(2,793)
BALANCING WHEELS	(560)	(462)	(502)	(1,269)	(2,832)	(1,052)	(4,170)
BALANCING VIRTUAL	(23,701)	(23,265)	(29,336)	(30,389)	(27,465)	(19,687)	(22,601)
	9	10	11	12	13	14	15
DAM NYCA	345,434	346,497	349,176	357,232	362,689	341,171	349,842
DAM NON-NYCA	59,289	58,907	57,102	65,881	60,336	62,098	54,660
DAM WHEELS	10,607	11,083	12,805	11,175	7,650	7,200	7,200
DAM VIRTUAL	27,129	28,234	27,574	21,928	24,618	22,116	25,072
BALANCING NYCA	15,780	10,580	3,627	16,594	20,841	20,292	9,746
BALANCING NON-NYCA	87	8,576	6,941	(4,983)	8,342	4,470	8,881
BALANCING WHEELS	(3,407)	(3,883)	(5,455)	(3,975)	(270)	0	0
BALANCING VIRTUAL	(27,129)	(28,234)	(27,574)	(21,928)	(24,618)	(22,116)	(25,072)
	16	17	18	19	20	21	22
DAM NYCA	395,927	377,287	346,557	370,903	386,683	420,493	434,373
DAM NON-NYCA	57,273	48,116	62,612	54,908	68,621	63,458	66,732
DAM WHEELS	7,200	7,200	7,400	7,200	7,315	7,200	7,200
DAM VIRTUAL	27,066	29,720	28,350	29,416	23,724	18,610	27,640
BALANCING NYCA	2,906	11,425	15,238	3,876	(11,369)	(15,273)	(8,457)
BALANCING NON-NYCA	9,292	10,889	(1,935)	7,179	2,981	10,150	9,983
BALANCING WHEELS	0	0	(50)	0	(115)	0	0
BALANCING VIRTUAL	(27,066)	(29,720)	(28,350)	(29,416)	(23,724)	(18,610)	(27,640)
	23	24	25	26	27	28	29
DAM NYCA	378,310	336,932	343,930	362,721	374,425	355,764	332,441
DAM NON-NYCA	77,804	79,878	76,493	73,015	76,644	79,102	79,072
DAM WHEELS	7,200	8,251	9,043	7,248	11,226	12,796	7,298
DAM VIRTUAL	27,828	27,875	31,776	31,510	26,942	25,546	23,614
BALANCING NYCA	4,786	27,138	22,506	20,461	17,077	2,816	3,066
BALANCING NON-NYCA	9,224	843	689	9,250	10,262	11,084	3,091
BALANCING WHEELS	(4,435)	(1,051)	(1,843)	(48)	(4,026)	(5,596)	(98)
BALANCING VIRTUAL	(27,828)	(27,875)	(31,776)	(31,510)	(26,942)	(25,546)	(23,614)
	30	31					
DAM NYCA	396,830	473,048					
DAM NON-NYCA	75,257	91,802					
DAM WHEELS	7,295	7,876					
DAM VIRTUAL	17,778	13,951					
BALANCING NYCA	(838)	5,288					
BALANCING NON-NYCA	865	12,472					
BALANCING WHEELS	(95)	(676)					
BALANCING VIRTUAL	(17,778)	(13,951)					



SETTLEMENTS REPORT
 May 2022 Close-Out Settlement
 February 7, 2023

4-Month Settlement Adjustment – Market Withdrawals Analysis

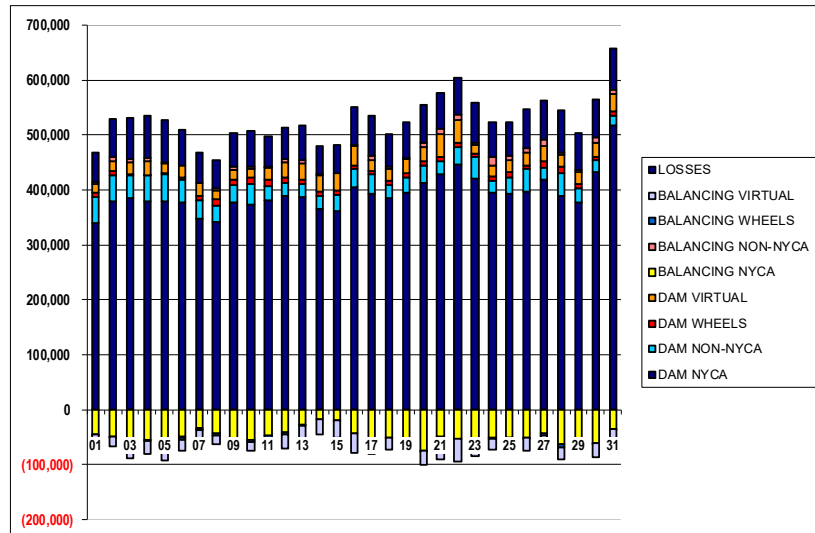
	MONDAY	TUESDAY	WEDNESDAY	THURSDAY	FRIDAY	SATURDAY	SUNDAY
DAM NYCA							1
DAM NON-NYCA							339,267
DAM WHEELS							47,827
DAM VIRTUAL							8,105
BALANCING NYCA							15,104
BALANCING NON-NYCA							(44,837)
BALANCING WHEELS							4,229
BALANCING VIRTUAL							(905)
UFE/LOSSES							(15,104)
							53,803
	2	3	4	5	6	7	8
DAM NYCA	379,956	384,849	379,694	379,629	376,490	347,513	340,952
DAM NON-NYCA	46,214	41,346	46,343	48,958	42,507	33,771	30,101
DAM WHEELS	7,760	2,562	502	1,269	3,432	8,252	11,370
DAM VIRTUAL	17,257	20,614	24,827	19,326	20,931	22,837	16,751
BALANCING NYCA	(49,105)	(66,303)	(55,364)	(71,115)	(48,311)	(33,533)	(42,024)
BALANCING NON-NYCA	7,976	6,391	5,857	15	(3,225)	(1,673)	2,953
BALANCING WHEELS	(560)	(462)	(502)	(1,269)	(2,832)	(1,052)	(4,170)
BALANCING VIRTUAL	(17,257)	(20,614)	(24,827)	(19,326)	(20,931)	(22,837)	(16,751)
UFE/LOSSES	70,274	74,844	78,589	78,734	66,246	54,583	51,406
	9	10	11	12	13	14	15
DAM NYCA	376,527	373,969	381,638	388,575	387,767	365,280	361,730
DAM NON-NYCA	32,443	36,690	24,969	23,195	23,787	24,088	29,668
DAM WHEELS	10,607	11,083	12,805	11,175	7,650	7,200	7,200
DAM VIRTUAL	16,889	16,773	20,489	26,314	28,531	29,115	31,417
BALANCING NYCA	(55,333)	(54,048)	(47,565)	(40,731)	(27,870)	(16,274)	(18,461)
BALANCING NON-NYCA	6,557	4,652	1,744	5,934	6,118	2,715	(778)
BALANCING WHEELS	(3,407)	(3,883)	(5,455)	(3,975)	(270)	0	0
BALANCING VIRTUAL	(16,689)	(16,773)	(20,489)	(26,314)	(28,531)	(29,115)	(31,417)
UFE/LOSSES	60,396	63,297	56,061	57,752	62,405	52,223	50,870
	16	17	18	19	20	21	22
DAM NYCA	405,178	392,069	384,129	394,428	413,183	428,087	446,134
DAM NON-NYCA	32,585	35,566	24,941	28,943	30,875	24,989	32,257
DAM WHEELS	7,200	7,200	7,400	7,200	7,315	7,200	7,200
DAM VIRTUAL	35,383	19,693	21,104	24,711	27,236	41,084	42,407
BALANCING NYCA	(42,771)	(60,247)	(51,247)	(53,611)	(73,530)	(49,103)	(52,405)
BALANCING NON-NYCA	2,295	7,644	4,296	3,327	6,089	9,838	8,382
BALANCING WHEELS	0	0	(50)	0	(115)	0	0
BALANCING VIRTUAL	(35,383)	(19,693)	(21,104)	(24,711)	(27,236)	(41,084)	(42,407)
UFE/LOSSES	68,112	72,685	60,353	63,778	70,299	65,018	68,262
	23	24	25	26	27	28	29
DAM NYCA	420,802	394,979	393,180	397,180	419,497	389,399	376,857
DAM NON-NYCA	38,573	20,840	30,293	40,495	21,007	40,135	26,726
DAM WHEELS	7,200	8,251	9,043	7,248	11,226	12,796	7,298
DAM VIRTUAL	15,960	19,937	21,283	22,485	28,407	21,644	21,671
BALANCING NYCA	(64,498)	(50,991)	(49,883)	(51,623)	(43,719)	(62,600)	(56,973)
BALANCING NON-NYCA	3,030	16,031	8,658	8,912	12,313	4,273	4,597
BALANCING WHEELS	(4,435)	(1,051)	(1,843)	(48)	(4,026)	(5,596)	(98)
BALANCING VIRTUAL	(15,960)	(19,937)	(21,283)	(22,485)	(28,407)	(21,644)	(21,671)
UFE/LOSSES	72,215	63,933	61,370	70,482	69,310	77,559	66,462
	30	31					
DAM NYCA	433,163	517,756					
DAM NON-NYCA	20,557	17,516					
DAM WHEELS	7,295	7,876					
DAM VIRTUAL	25,253	31,841					
BALANCING NYCA	(60,617)	(34,212)					
BALANCING NON-NYCA	9,197	7,596					
BALANCING WHEELS	(95)	(676)					
BALANCING VIRTUAL	(25,253)	(31,841)					
UFE/LOSSES	69,814	73,954					



SETTLEMENTS REPORT
 May 2022 Close-Out Settlement
 February 7, 2023

Close-Out Settlement – Market Withdrawals Analysis

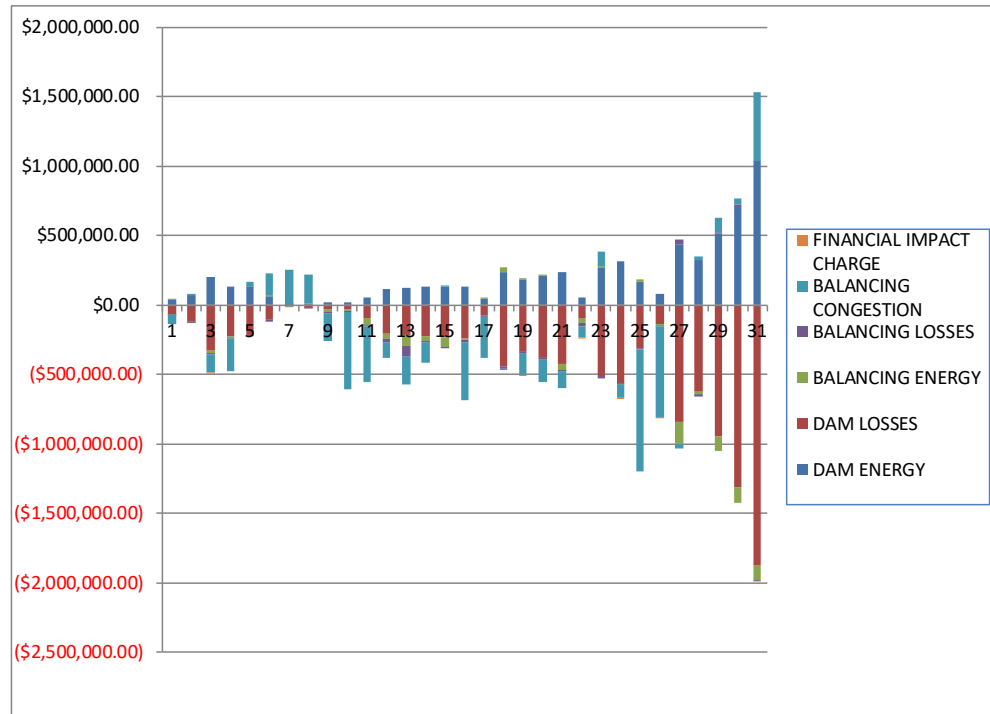
	MONDAY	TUESDAY	WEDNESDAY	THURSDAY	FRIDAY	SATURDAY	SUNDAY
DAM NYCA							1
DAM NON-NYCA							339,267
DAM WHEELS							47,827
DAM VIRTUAL							8,105
BALANCING NYCA							15,104
BALANCING NON-NYCA							(44,837)
BALANCING WHEELS							4,229
BALANCING VIRTUAL							(905)
UFELOSSES							(15,104)
							53,803
	2	3	4	5	6	7	8
DAM NYCA	379,956	384,849	379,694	379,629	376,490	347,513	340,952
DAM NON-NYCA	46,214	41,346	46,343	48,958	42,507	33,771	30,101
DAM WHEELS	7,760	2,562	502	1,269	3,432	8,252	11,370
DAM VIRTUAL	17,257	20,614	24,827	19,326	20,931	22,837	16,751
BALANCING NYCA	(49,105)	(66,303)	(55,364)	(71,115)	(48,311)	(33,533)	(42,024)
BALANCING NON-NYCA	7,976	6,391	5,857	15	(3,225)	(1,673)	2,953
BALANCING WHEELS	(560)	(462)	(502)	(1,269)	(2,832)	(1,052)	(4,170)
BALANCING VIRTUAL	(17,257)	(20,614)	(24,827)	(19,326)	(20,931)	(22,837)	(16,751)
UFELOSSES	70,274	74,844	78,589	78,734	66,246	54,583	51,406
	9	10	11	12	13	14	15
DAM NYCA	376,527	373,969	381,638	388,575	387,767	365,280	361,730
DAM NON-NYCA	32,443	36,690	24,969	23,195	23,787	24,088	29,668
DAM WHEELS	10,607	11,083	12,805	11,175	7,650	7,200	7,200
DAM VIRTUAL	16,689	16,773	20,489	26,314	28,531	29,115	31,417
BALANCING NYCA	(55,333)	(54,048)	(47,565)	(40,731)	(27,870)	(16,274)	(18,461)
BALANCING NON-NYCA	6,557	4,652	1,744	5,934	6,118	2,715	(775)
BALANCING WHEELS	(3,407)	(3,883)	(5,455)	(3,975)	(270)	0	0
BALANCING VIRTUAL	(16,689)	(16,773)	(20,489)	(26,314)	(28,531)	(29,115)	(31,417)
UFELOSSES	60,396	63,297	56,061	57,752	62,405	52,223	50,870
	16	17	18	19	20	21	22
DAM NYCA	405,178	392,069	384,129	394,428	413,183	428,087	446,134
DAM NON-NYCA	32,585	35,566	24,941	28,943	30,875	24,989	32,257
DAM WHEELS	7,200	7,200	7,400	7,200	7,315	7,200	7,200
DAM VIRTUAL	35,383	19,693	21,104	24,711	27,236	41,084	42,407
BALANCING NYCA	(42,771)	(60,247)	(51,247)	(53,611)	(73,530)	(49,103)	(52,405)
BALANCING NON-NYCA	2,295	7,644	4,296	3,327	6,089	9,838	8,382
BALANCING WHEELS	0	0	(50)	0	(115)	0	0
BALANCING VIRTUAL	(35,383)	(19,693)	(21,104)	(24,711)	(27,236)	(41,084)	(42,407)
UFELOSSES	68,112	72,685	60,355	63,778	70,299	65,018	68,262
	23	24	25	26	27	28	29
DAM NYCA	420,802	394,979	393,180	397,180	419,497	389,399	376,857
DAM NON-NYCA	38,573	20,840	30,293	40,495	21,007	40,135	26,726
DAM WHEELS	7,200	8,251	9,043	7,248	11,226	12,796	7,298
DAM VIRTUAL	15,960	19,937	21,283	22,485	28,407	21,644	21,671
BALANCING NYCA	(64,498)	(50,992)	(49,883)	(51,622)	(43,719)	(62,600)	(56,973)
BALANCING NON-NYCA	3,030	16,031	8,658	8,912	12,313	4,273	4,597
BALANCING WHEELS	(4,435)	(1,051)	(1,843)	(48)	(4,026)	(5,596)	(98)
BALANCING VIRTUAL	(15,960)	(19,937)	(21,283)	(22,485)	(28,407)	(21,644)	(21,671)
UFELOSSES	72,216	63,933	61,370	70,482	69,310	77,559	66,462
	30	31					
DAM NYCA	433,163	517,756					
DAM NON-NYCA	20,557	17,516					
DAM WHEELS	7,295	7,876					
DAM VIRTUAL	25,253	31,841					
BALANCING NYCA	(60,617)	(34,212)					
BALANCING NON-NYCA	9,197	7,596					
BALANCING WHEELS	(95)	(676)					
BALANCING VIRTUAL	(25,253)	(31,841)					
UFELOSSES	69,814	73,954					



SETTLEMENTS REPORT
 May 2022 Close-Out Settlement
 February 7, 2023

4-Month Settlement Adjustment – Market Residuals Analysis

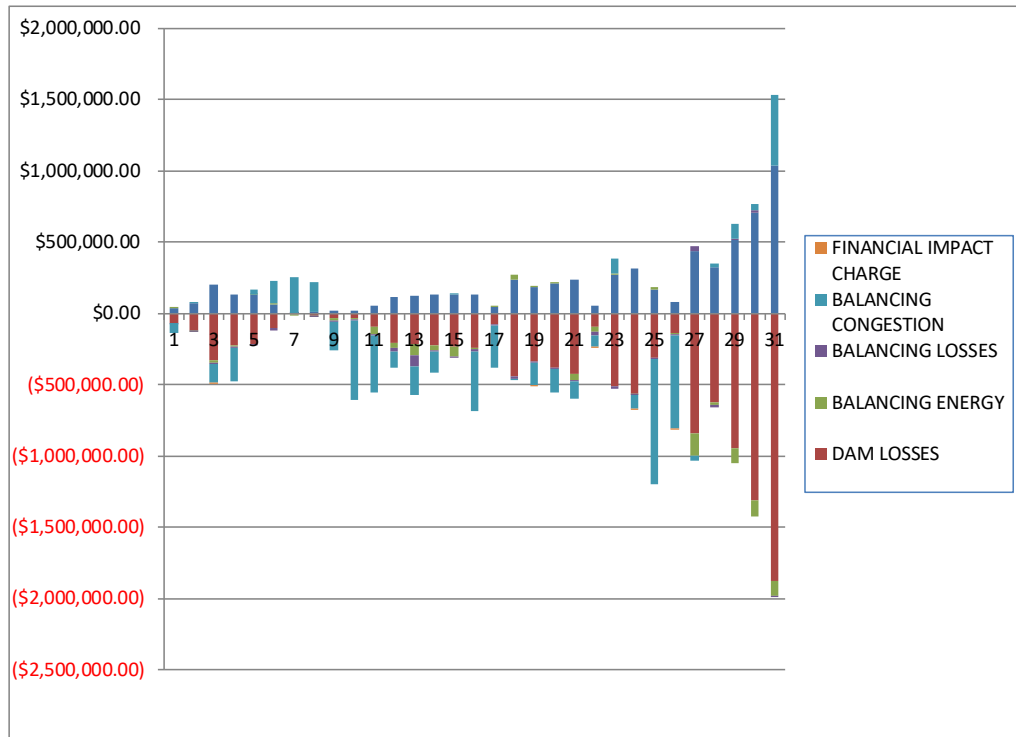
	MONDAY	TUESDAY	WEDNESDAY	THURSDAY	FRIDAY	SATURDAY	SUNDAY
							1
DAM ENERGY							\$37,492.87
DAM LOSSES							(\$67,265.62)
BALANCING ENERGY							\$1,342.42
BALANCING LOSSES							(\$2,670.78)
BALANCING CONGESTION							(\$72,954.80)
FINANCIAL IMPACT CHARGE							\$0.00
	2	3	4	5	6	7	8
DAM ENERGY	\$66,040.64	\$200,785.76	\$134,329.82	\$130,179.65	\$63,176.56	\$3,386.15	\$7,288.04
DAM LOSSES	(\$120,298.51)	(\$330,420.93)	(\$224,337.54)	(\$218,654.12)	(\$105,039.31)	(\$6,132.84)	(\$13,443.40)
BALANCING ENERGY	(\$5,155.55)	(\$21,148.59)	(\$12,038.75)	\$829.91	\$5,406.37	(\$7,336.34)	(\$3,515.54)
BALANCING LOSSES	(\$1,983.87)	(\$4,777.80)	(\$8,948.60)	(\$11,147.67)	(\$14,079.68)	\$221.68	(\$5,964.41)
BALANCING CONGESTION	\$12,918.94	(\$133,731.18)	(\$233,471.93)	\$38,599.46	\$158,212.19	\$248,326.10	\$210,136.54
FINANCIAL IMPACT CHARGE	\$0.00	(\$2,426.62)	\$0.00	\$0.00	\$0.00	\$0.00	\$0.00
	9	10	11	12	13	14	15
DAM ENERGY	\$21,013.77	\$20,527.19	\$53,580.04	\$115,849.03	\$121,847.23	\$130,033.07	\$129,654.38
DAM LOSSES	(\$37,227.99)	(\$35,290.08)	(\$92,703.66)	(\$205,691.86)	(\$217,359.92)	(\$228,979.48)	(\$231,603.27)
BALANCING ENERGY	(\$10,657.51)	(\$5,236.37)	(\$57,467.68)	(\$40,991.17)	(\$77,401.24)	(\$33,975.92)	(\$72,266.89)
BALANCING LOSSES	(\$8,403.43)	(\$12,353.18)	(\$3,755.52)	(\$23,021.11)	(\$77,406.76)	(\$5,377.31)	(\$5,661.55)
BALANCING CONGESTION	(\$202,520.50)	(\$553,880.23)	(\$404,307.78)	(\$113,902.54)	(\$199,292.24)	(\$145,075.36)	\$7,907.09
FINANCIAL IMPACT CHARGE	\$0.00	\$0.00	\$0.00	\$0.00	\$0.00	\$0.00	\$0.00
	16	17	18	19	20	21	22
DAM ENERGY	\$129,186.39	\$42,021.38	\$232,201.10	\$179,893.35	\$206,434.39	\$238,370.50	\$51,346.62
DAM LOSSES	(\$241,917.74)	(\$76,666.44)	(\$438,909.45)	(\$336,204.88)	(\$384,712.38)	(\$425,836.16)	(\$94,950.07)
BALANCING ENERGY	(\$9,491.85)	\$12,635.01	\$39,206.40	\$3,569.68	\$1,681.91	(\$41,854.18)	(\$31,576.84)
BALANCING LOSSES	(\$17,189.26)	(\$6,741.97)	(\$18,085.33)	(\$10,398.68)	(\$6,250.04)	(\$8,271.50)	(\$32,044.40)
BALANCING CONGESTION	(\$415,163.12)	(\$297,318.69)	(\$14,888.49)	(\$158,453.38)	(\$164,976.01)	(\$123,917.36)	(\$76,461.57)
FINANCIAL IMPACT CHARGE	\$0.00	\$0.00	\$0.00	(\$1,788.62)	\$0.00	\$0.00	(\$1,280.37)
	23	24	25	26	27	28	29
DAM ENERGY	\$269,463.55	\$311,883.67	\$165,767.35	\$76,030.09	\$435,042.86	\$326,294.91	\$511,045.94
DAM LOSSES	(\$510,837.04)	(\$565,831.28)	(\$313,140.69)	(\$142,374.19)	(\$841,746.06)	(\$629,001.56)	(\$947,372.70)
BALANCING ENERGY	\$12,180.32	(\$2,467.95)	\$13,361.64	(\$4,800.47)	(\$158,364.38)	(\$10,397.61)	(\$108,744.55)
BALANCING LOSSES	(\$15,691.96)	(\$7,233.02)	(\$4,832.69)	(\$5,564.41)	\$30,599.86	(\$23,214.96)	\$10,309.49
BALANCING CONGESTION	\$100,175.38	(\$91,689.87)	(\$885,331.64)	(\$659,578.84)	(\$35,549.48)	\$18,501.15	\$101,192.43
FINANCIAL IMPACT CHARGE	\$0.00	(\$39.25)	\$0.00	(\$3,671.86)	\$0.00	\$0.00	\$0.00
	30	31					
DAM ENERGY	\$704,114.27	\$1,032,267.34					
DAM LOSSES	(\$1,311,085.42)	(\$1,875,276.07)					
BALANCING ENERGY	(\$110,692.21)	(\$105,799.50)					
BALANCING LOSSES	\$17,544.60	(\$434.17)					
BALANCING CONGESTION	\$44,301.33	\$501,523.05					
FINANCIAL IMPACT CHARGE	\$0.00	\$0.00					



SETTLEMENTS REPORT
 May 2022 Close-Out Settlement
 February 7, 2023

Close-Out Settlement – Market Residuals Analysis

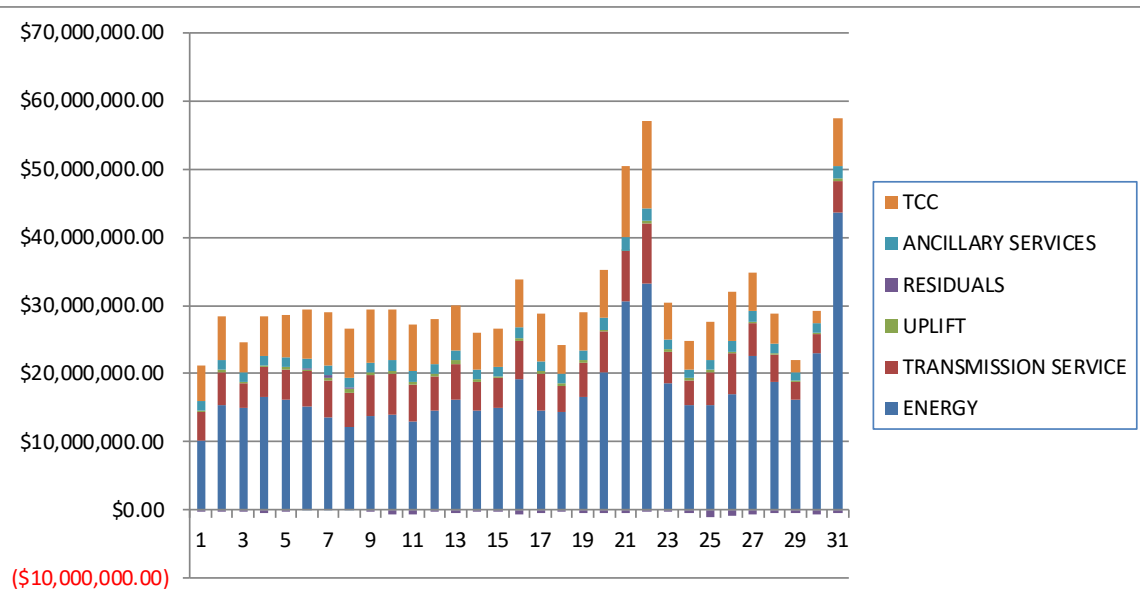
	MONDAY	TUESDAY	WEDNESDAY	THURSDAY	FRIDAY	SATURDAY	SUNDAY
							1
DAM ENERGY							\$37,492.87
DAM LOSSES							(\$67,265.62)
BALANCING ENERGY							\$1,342.43
BALANCING LOSSES							(\$2,670.78)
BALANCING CONGESTION							(\$72,954.79)
FINANCIAL IMPACT CHARGE							\$0.00
	2	3	4	5	6	7	8
DAM ENERGY	\$66,040.64	\$200,785.76	\$134,329.82	\$130,179.65	\$63,176.57	\$3,386.15	\$7,288.04
DAM LOSSES	(\$120,298.50)	(\$330,420.93)	(\$224,337.54)	(\$218,654.11)	(\$105,039.31)	(\$6,132.84)	(\$13,443.41)
BALANCING ENERGY	(\$5,155.56)	(\$21,148.58)	(\$12,038.75)	\$829.91	\$5,406.37	(\$7,336.34)	(\$3,515.54)
BALANCING LOSSES	(\$1,983.87)	(\$4,777.80)	(\$8,948.61)	(\$11,147.67)	(\$14,079.68)	\$221.68	(\$5,964.41)
BALANCING CONGESTION	\$12,918.94	(\$133,731.17)	(\$233,471.93)	\$38,599.47	\$158,212.19	\$248,326.11	\$210,136.54
FINANCIAL IMPACT CHARGE	\$0.00	(\$2,426.57)	\$0.00	\$0.00	\$0.00	\$0.00	\$0.00
	9	10	11	12	13	14	15
DAM ENERGY	\$21,013.78	\$20,527.19	\$53,580.04	\$115,849.03	\$121,847.22	\$130,033.07	\$129,654.39
DAM LOSSES	(\$37,227.99)	(\$35,290.08)	(\$92,703.66)	(\$205,691.87)	(\$217,359.92)	(\$228,979.48)	(\$231,603.28)
BALANCING ENERGY	(\$10,657.51)	(\$5,236.37)	(\$57,467.68)	(\$40,991.17)	(\$77,401.25)	(\$33,975.92)	(\$72,266.89)
BALANCING LOSSES	(\$8,403.42)	(\$12,353.18)	(\$3,755.52)	(\$23,021.12)	(\$77,406.77)	(\$5,377.31)	(\$5,661.56)
BALANCING CONGESTION	(\$202,520.49)	(\$553,880.23)	(\$404,307.78)	(\$113,902.55)	(\$199,292.24)	(\$145,075.35)	\$7,907.09
FINANCIAL IMPACT CHARGE	\$0.00	\$0.00	\$0.00	\$0.00	\$0.00	\$0.00	\$0.00
	16	17	18	19	20	21	22
DAM ENERGY	\$129,186.38	\$42,021.38	\$232,201.10	\$179,893.35	\$206,434.39	\$238,370.49	\$51,346.61
DAM LOSSES	(\$241,917.74)	(\$76,666.44)	(\$438,909.45)	(\$336,204.88)	(\$384,712.38)	(\$425,836.16)	(\$94,950.06)
BALANCING ENERGY	(\$9,491.86)	\$12,635.00	\$39,206.40	\$3,569.67	\$1,681.90	(\$41,854.18)	(\$31,576.84)
BALANCING LOSSES	(\$17,189.27)	(\$6,741.98)	(\$18,085.33)	(\$10,398.69)	(\$6,250.03)	(\$8,271.49)	(\$32,044.40)
BALANCING CONGESTION	(\$415,163.11)	(\$297,318.69)	(\$14,888.49)	(\$158,453.39)	(\$164,976.01)	(\$123,917.36)	(\$76,461.57)
FINANCIAL IMPACT CHARGE	\$0.00	\$0.00	\$0.00	(\$1,788.62)	\$0.00	\$0.00	(\$1,280.34)
	23	24	25	26	27	28	29
DAM ENERGY	\$269,463.55	\$311,883.67	\$165,767.36	\$76,030.10	\$435,042.87	\$326,294.92	\$511,045.95
DAM LOSSES	(\$510,837.04)	(\$665,831.28)	(\$313,140.69)	(\$142,374.19)	(\$841,746.06)	(\$629,001.56)	(\$947,372.71)
BALANCING ENERGY	\$12,180.32	(\$2,467.95)	\$13,361.64	(\$4,800.47)	(\$158,364.38)	(\$10,397.61)	(\$108,744.56)
BALANCING LOSSES	(\$15,691.96)	(\$7,233.02)	(\$4,832.70)	(\$5,564.40)	\$30,599.85	(\$23,214.96)	\$10,309.49
BALANCING CONGESTION	\$100,175.38	(\$91,689.87)	(\$885,331.64)	(\$659,578.83)	(\$35,549.47)	\$18,501.15	\$101,192.43
FINANCIAL IMPACT CHARGE	\$0.00	(\$39.27)	\$0.00	(\$3,671.90)	\$0.00	\$0.00	\$0.00
	30	31					
DAM ENERGY	\$704,114.27	\$1,032,267.34					
DAM LOSSES	(\$1,311,085.42)	(\$1,875,276.08)					
BALANCING ENERGY	(\$110,692.21)	(\$105,799.50)					
BALANCING LOSSES	\$17,544.59	(\$434.16)					
BALANCING CONGESTION	\$44,301.33	\$501,523.05					
FINANCIAL IMPACT CHARGE	\$0.00	\$0.00					



SETTLEMENTS REPORT
 May 2022 Close-Out Settlement
 February 7, 2023

4-Month Settlement Adjustment – Market Costs Analysis

	MONDAY	TUESDAY	WEDNESDAY	THURSDAY	FRIDAY	SATURDAY	SUNDAY
ENERGY							1
TRANSMISSION SERVICE							\$10,139,395.90
UPLIFT							\$4,192,219.20
RESIDUALS							\$216,316.03
ANCILLARY SERVICES							(\$104,055.89)
TCC							\$1,411,872.91
							\$5,221,751.29
	2	3	4	5	6	7	8
ENERGY	\$15,326,040.90	\$14,942,972.50	\$16,558,497.00	\$16,221,921.63	\$15,252,339.01	\$13,546,820.31	\$12,168,805.10
TRANSMISSION SERVICE	\$4,960,504.00	\$3,633,516.00	\$4,375,186.35	\$4,456,606.20	\$5,158,383.80	\$5,531,351.52	\$5,110,509.57
UPLIFT	\$284,419.49	\$199,552.30	\$253,914.12	\$272,910.81	\$276,287.38	\$408,147.09	\$462,038.24
RESIDUALS	(\$48,478.35)	(\$291,719.29)	(\$344,467.01)	(\$60,192.75)	\$107,676.14	\$238,464.76	\$194,501.22
ANCILLARY SERVICES	\$1,491,949.47	\$1,440,269.98	\$1,480,279.50	\$1,452,201.83	\$1,458,489.93	\$1,426,245.91	\$1,382,550.32
TCC	\$6,327,721.44	\$4,369,100.62	\$5,749,248.43	\$6,168,496.91	\$7,219,666.87	\$7,928,814.21	\$7,253,210.17
	9	10	11	12	13	14	15
ENERGY	\$13,865,674.30	\$13,946,020.70	\$13,089,567.98	\$14,586,996.66	\$16,157,014.61	\$14,621,898.02	\$14,969,665.21
TRANSMISSION SERVICE	\$5,977,932.76	\$5,973,269.50	\$5,408,923.36	\$4,997,953.15	\$5,252,426.94	\$4,226,496.89	\$4,336,546.07
UPLIFT	\$396,351.73	\$507,054.78	\$384,221.54	\$315,614.63	\$508,581.35	\$297,840.80	\$298,198.99
RESIDUALS	(\$237,795.63)	(\$586,232.67)	(\$504,654.60)	(\$267,757.68)	(\$449,612.96)	(\$283,374.99)	(\$171,970.25)
ANCILLARY SERVICES	\$1,451,505.90	\$1,489,366.32	\$1,473,047.35	\$1,511,021.19	\$1,512,144.98	\$1,461,200.08	\$1,463,065.28
TCC	\$7,611,193.13	\$7,448,893.17	\$6,799,783.80	\$6,531,929.31	\$6,599,658.17	\$5,338,301.92	\$5,549,952.12
	16	17	18	19	20	21	22
ENERGY	\$19,141,640.36	\$14,505,830.81	\$14,438,137.20	\$16,603,996.39	\$20,260,406.90	\$30,661,844.02	\$33,152,872.68
TRANSMISSION SERVICE	\$5,633,995.83	\$5,538,744.25	\$3,726,604.06	\$4,900,816.41	\$5,889,311.93	\$7,286,402.65	\$8,918,999.25
UPLIFT	\$366,115.80	\$315,417.81	\$389,068.52	\$427,220.84	\$253,247.88	\$90,634.84	\$253,341.57
RESIDUALS	(\$554,575.60)	(\$326,070.73)	(\$200,475.77)	(\$323,382.56)	(\$347,822.13)	(\$361,508.70)	(\$184,966.60)
ANCILLARY SERVICES	\$1,600,917.22	\$1,508,149.54	\$1,395,875.90	\$1,550,618.10	\$1,704,185.88	\$1,933,207.83	\$1,859,588.43
TCC	\$7,102,359.19	\$7,031,207.17	\$4,322,271.37	\$5,496,892.56	\$7,100,084.15	\$10,359,142.14	\$12,870,541.64
	23	24	25	26	27	28	29
ENERGY	\$18,631,532.90	\$15,357,428.12	\$15,482,674.60	\$16,911,323.28	\$22,511,694.94	\$18,841,020.35	\$16,274,475.59
TRANSMISSION SERVICE	\$4,565,717.50	\$3,654,206.21	\$4,797,250.85	\$6,028,830.09	\$4,892,949.24	\$3,931,916.29	\$2,439,921.91
UPLIFT	\$349,325.85	\$326,417.30	\$242,906.74	\$261,898.24	\$264,700.46	\$254,076.43	\$250,265.76
RESIDUALS	(\$144,709.75)	(\$355,377.72)	(\$1,024,176.03)	(\$739,959.69)	(\$570,017.19)	(\$317,818.06)	(\$433,569.40)
ANCILLARY SERVICES	\$1,411,820.84	\$1,341,185.62	\$1,428,682.90	\$1,510,006.03	\$1,505,824.19	\$1,374,570.23	\$1,281,379.60
TCC	\$5,526,189.24	\$4,131,512.57	\$5,597,646.74	\$7,363,011.56	\$5,573,550.02	\$4,455,119.95	\$1,838,845.37
	30	31					
ENERGY	\$23,045,725.90	\$43,616,974.15					
TRANSMISSION SERVICE	\$2,750,582.84	\$4,660,134.38					
UPLIFT	\$194,950.12	\$272,520.32					
RESIDUALS	(\$655,817.44)	(\$447,719.35)					
ANCILLARY SERVICES	\$1,434,900.65	\$1,886,534.41					
TCC	\$1,729,736.29	\$6,878,422.08					



SETTLEMENTS REPORT
 May 2022 Close-Out Settlement
 February 7, 2023

Close-Out Settlement – Market Costs Analysis

	MONDAY	TUESDAY	WEDNESDAY	THURSDAY	FRIDAY	SATURDAY	SUNDAY
							1
ENERGY							\$10,139,396.10
TRANSMISSION SERVICE							\$4,192,169.38
UPLIFT							\$216,316.03
RESIDUALS							(\$104,055.91)
ANCILLARY SERVICES							\$1,411,849.00
TCC							\$5,221,751.29
	2	3	4	5	6	7	8
ENERGY	\$15,326,040.92	\$14,942,972.24	\$16,558,496.62	\$16,221,921.36	\$15,252,339.34	\$13,546,820.08	\$12,168,805.46
TRANSMISSION SERVICE	\$4,960,453.50	\$3,633,468.78	\$4,375,138.94	\$4,456,559.59	\$5,158,334.14	\$5,531,145.57	\$5,110,352.14
UPLIFT	\$284,419.49	\$199,552.30	\$253,914.14	\$272,910.79	\$276,287.37	\$408,147.10	\$462,038.25
RESIDUALS	(\$48,478.35)	(\$291,719.36)	(\$344,467.00)	(\$60,192.77)	\$107,676.13	\$238,464.75	\$194,501.23
ANCILLARY SERVICES	\$1,491,925.24	\$1,440,247.30	\$1,480,256.75	\$1,452,179.46	\$1,458,466.11	\$1,426,147.07	\$1,382,474.79
TCC	\$6,327,721.44	\$4,369,100.62	\$5,749,248.43	\$6,168,496.91	\$7,219,666.87	\$7,928,814.21	\$7,253,210.17
	9	10	11	12	13	14	15
ENERGY	\$13,865,674.32	\$13,946,020.69	\$13,089,567.70	\$14,586,996.39	\$16,157,014.97	\$14,621,898.22	\$14,969,665.32
TRANSMISSION SERVICE	\$5,977,816.47	\$5,973,202.72	\$5,408,867.68	\$4,997,828.84	\$5,252,285.29	\$4,226,351.22	\$4,336,408.48
UPLIFT	\$396,351.73	\$507,054.75	\$384,221.65	\$315,614.63	\$508,581.29	\$297,840.79	\$298,199.00
RESIDUALS	(\$237,795.66)	(\$586,232.67)	(\$504,654.60)	(\$267,757.65)	(\$449,612.93)	(\$283,375.00)	(\$171,970.24)
ANCILLARY SERVICES	\$1,451,450.09	\$1,489,334.28	\$1,473,020.61	\$1,510,961.54	\$1,512,077.02	\$1,461,130.17	\$1,462,999.23
TCC	\$7,611,193.13	\$7,448,893.17	\$6,799,783.80	\$6,531,929.31	\$6,599,658.17	\$5,338,301.92	\$5,549,952.12
	16	17	18	19	20	21	22
ENERGY	\$19,141,640.61	\$14,505,830.99	\$14,438,137.41	\$16,603,996.63	\$20,260,407.07	\$30,661,843.82	\$33,152,873.02
TRANSMISSION SERVICE	\$5,633,860.09	\$5,538,612.06	\$3,726,457.90	\$4,900,652.01	\$5,889,134.15	\$7,286,236.07	\$8,918,741.43
UPLIFT	\$366,115.80	\$315,417.81	\$389,068.53	\$427,220.84	\$253,247.86	\$90,634.85	\$253,341.64
RESIDUALS	(\$554,575.58)	(\$326,070.71)	(\$200,475.77)	(\$323,382.53)	(\$347,822.13)	(\$361,508.70)	(\$184,966.63)
ANCILLARY SERVICES	\$1,600,852.09	\$1,508,086.10	\$1,395,805.78	\$1,550,539.21	\$1,704,100.57	\$1,933,127.89	\$1,859,464.71
TCC	\$7,102,359.19	\$7,031,207.17	\$4,322,271.37	\$5,496,892.56	\$7,100,084.15	\$10,359,142.14	\$12,870,541.64
	23	24	25	26	27	28	29
ENERGY	\$18,631,532.53	\$15,357,428.78	\$15,482,674.91	\$16,911,323.16	\$22,511,694.92	\$18,841,020.29	\$16,274,475.66
TRANSMISSION SERVICE	\$4,565,578.61	\$3,654,150.92	\$4,797,206.03	\$6,028,714.42	\$4,892,920.21	\$3,931,887.85	\$2,439,891.26
UPLIFT	\$349,325.84	\$326,417.30	\$242,906.74	\$261,898.23	\$264,700.47	\$254,076.43	\$250,265.76
RESIDUALS	(\$144,709.75)	(\$355,377.70)	(\$1,024,176.03)	(\$739,959.68)	(\$570,017.20)	(\$317,818.07)	(\$433,569.39)
ANCILLARY SERVICES	\$1,411,754.19	\$1,341,159.09	\$1,428,661.42	\$1,509,950.50	\$1,505,810.25	\$1,374,556.59	\$1,281,364.89
TCC	\$5,526,189.24	\$4,131,512.57	\$5,597,646.74	\$7,363,011.56	\$5,573,550.02	\$4,455,119.95	\$1,838,845.37
	30	31					
ENERGY	\$23,045,725.54	\$43,616,974.34					
TRANSMISSION SERVICE	\$2,750,547.12	\$4,660,078.35					
UPLIFT	\$194,950.13	\$272,520.30					
RESIDUALS	(\$655,817.43)	(\$447,719.35)					
ANCILLARY SERVICES	\$1,434,883.50	\$1,886,507.53					
TCC	\$1,729,736.29	\$6,878,422.08					

