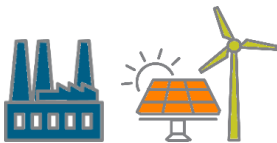


Energy Production and Delivery

Wholesale Energy Market



Supply: Generation of Energy



Sources for energy generation: Dual Fuel (Gas/Oil), Gas, Oil, Nuclear, Hydro, Pumped Hydro, Wind, Solar, and other Renewables, Energy Storage Resources (ESR) and Imports into the NY Control Area

Step-up transformers
Convert electricity to higher voltages for transmission over large distances.

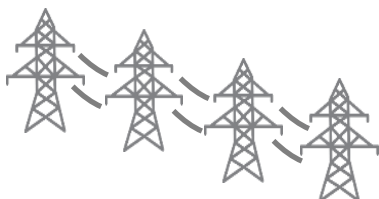


NYISO's Role:

Operates the wholesale energy market to economically dispatch generation and controls the transmission of power across the high-voltage transmission network



High Voltage Transmission Network



Transmission Owners (TOs) own, operate, and maintain facilities used in the transmission of wholesale energy.

NYISO oversees:

765 kV
500 kV
345 kV
230 kV
115 kV

Local Distribution System



Demand Side Resources:
Load Reduction offered as generation to the grid

Load Serving Entities (LSEs):

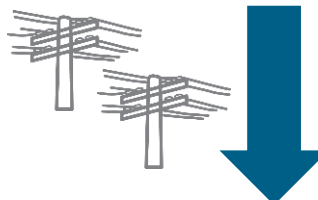
Purchase wholesale power in order to serve retail customers

Could be an investor-owned utility, public power authority, municipal electric system, or electric cooperative

Step-down transformers
Convert electricity to lower voltages for retail use.



Distribution Network



Distribution System: TOs distribute power across the lower voltage transmission networks to retail consumers.

Load: Retail Customers

Electricity reaches retail customers, such as schools, houses, factories, and commercial buildings.

