

Locational Based Marginal Pricing

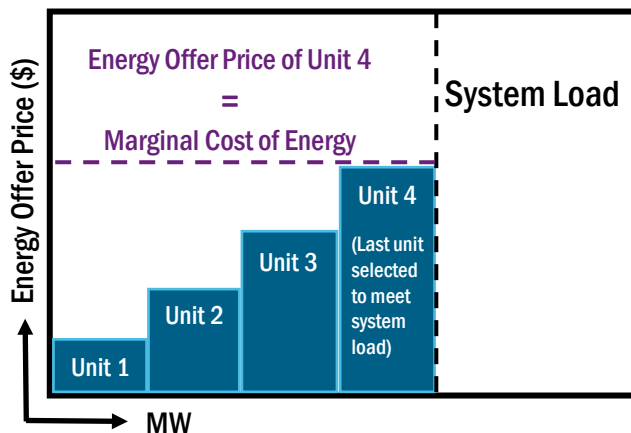
The **Locational Based Marginal Price (LBMP)** is the cost to serve the next MW of Load at a specific location in the grid.

The Three Components of LBMP

Marginal Energy Price

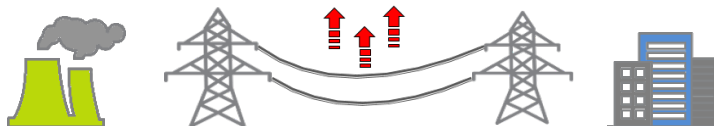
Cost of producing energy to meet system load in an unconstrained system

- Component of LBMP remains the same at all buses
- Assigned to a central Reference point (Marcy)



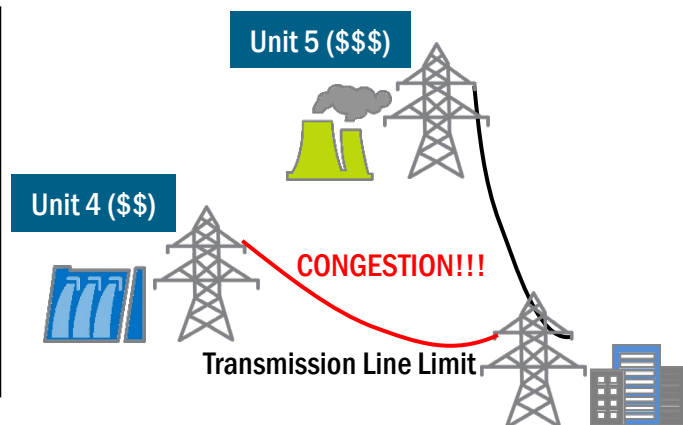
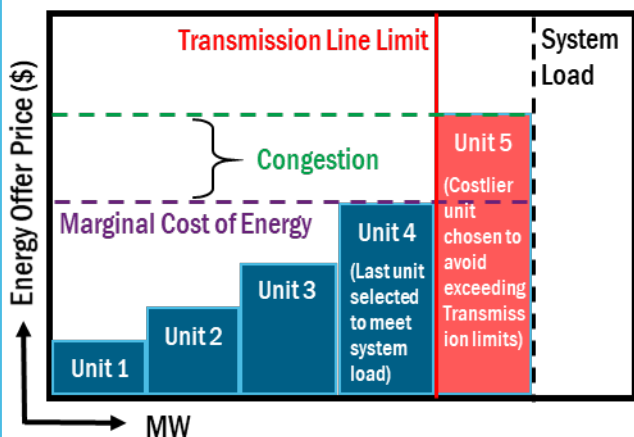
Marginal Loss Price

Component that captures Transmission Losses along path to Load caused by Heat dissipation



Marginal Cost of Congestion

Reflects the cost associated with costlier units dispatched to avoid exceeding Transmission Limits and other system constraints



$$\text{LBMP} = \text{Energy} + \text{Loss} - \text{Congestion}$$