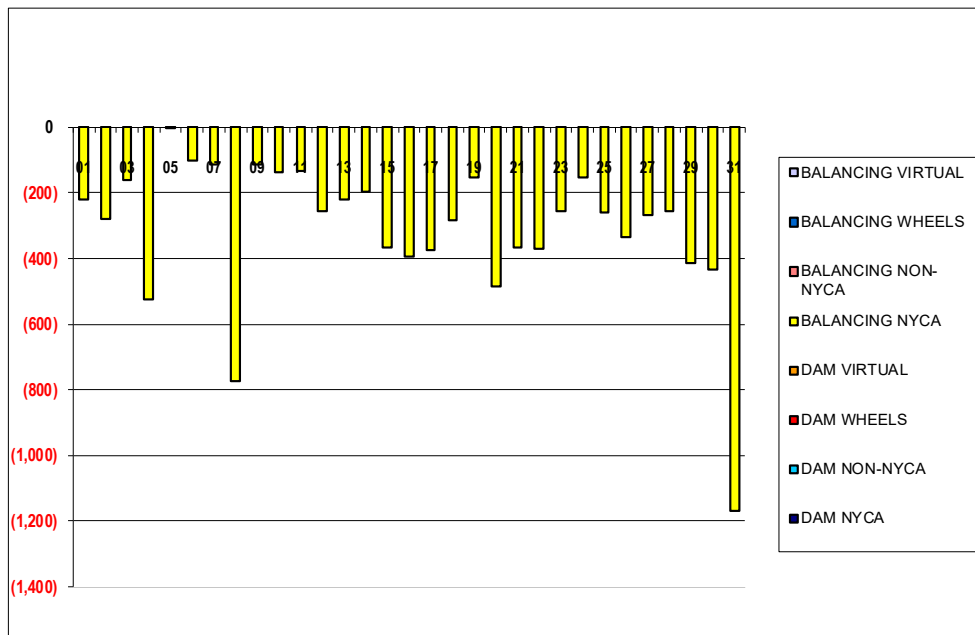


SETTLEMENTS REPORT
 August 2022 Settlement Adjustment
 January 9, 2023

Settlement Adjustment – Market Supply Delta Analysis

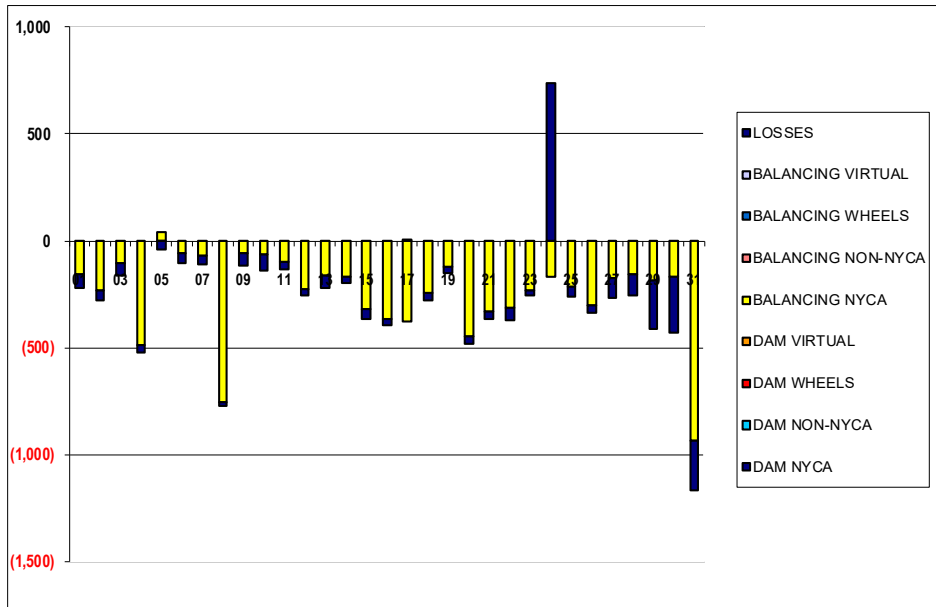
	MONDAY	TUESDAY	WEDNESDAY	THURSDAY	FRIDAY	SATURDAY	SUNDAY
	1	2	3	4	5	6	7
DAM NYCA	0	0	0	0	0	0	0
DAM NON-NYCA	0	0	0	0	0	0	0
DAM WHEELS	0	0	0	0	0	0	0
DAM VIRTUAL	0	0	0	0	0	0	0
BALANCING NYCA	(218)	(277)	(162)	(525)	(2)	(102)	(112)
BALANCING NON-NYCA	0	0	0	0	0	0	0
BALANCING WHEELS	0	0	0	0	0	0	0
BALANCING VIRTUAL	0	0	0	0	0	0	0
	8	9	10	11	12	13	14
DAM NYCA	0	0	0	0	0	0	0
DAM NON-NYCA	0	0	0	0	0	0	0
DAM WHEELS	0	0	0	0	0	0	0
DAM VIRTUAL	0	0	0	0	0	0	0
BALANCING NYCA	(774)	(114)	(137)	(133)	(254)	(221)	(196)
BALANCING NON-NYCA	0	0	0	0	0	0	0
BALANCING WHEELS	0	0	0	0	0	0	0
BALANCING VIRTUAL	0	0	0	0	0	0	0
	15	16	17	18	19	20	21
DAM NYCA	0	0	0	0	0	0	0
DAM NON-NYCA	0	0	0	0	0	0	0
DAM WHEELS	0	0	0	0	0	0	0
DAM VIRTUAL	0	0	0	0	0	0	0
BALANCING NYCA	(364)	(392)	(374)	(281)	(153)	(485)	(367)
BALANCING NON-NYCA	0	0	0	0	0	0	0
BALANCING WHEELS	0	0	0	0	0	0	0
BALANCING VIRTUAL	0	0	0	0	0	0	0
	22	23	24	25	26	27	28
DAM NYCA	0	0	0	0	0	0	0
DAM NON-NYCA	0	0	0	0	0	0	0
DAM WHEELS	0	0	0	0	0	0	0
DAM VIRTUAL	0	0	0	0	0	0	0
BALANCING NYCA	(370)	(256)	(154)	(259)	(335)	(269)	(255)
BALANCING NON-NYCA	0	0	0	0	0	0	0
BALANCING WHEELS	0	0	0	0	0	0	0
BALANCING VIRTUAL	0	0	0	0	0	0	0
	29	30	31				
DAM NYCA	0	0	0				
DAM NON-NYCA	0	0	0				
DAM WHEELS	0	0	0				
DAM VIRTUAL	0	0	0				
BALANCING NYCA	(413)	(432)	(1,170)				
BALANCING NON-NYCA	0	0	0				
BALANCING WHEELS	0	0	0				
BALANCING VIRTUAL	0	0	0				



SETTLEMENTS REPORT
 August 2022 Settlement Adjustment
 January 9, 2023

Settlement Adjustment – Market Withdrawals Delta Analysis

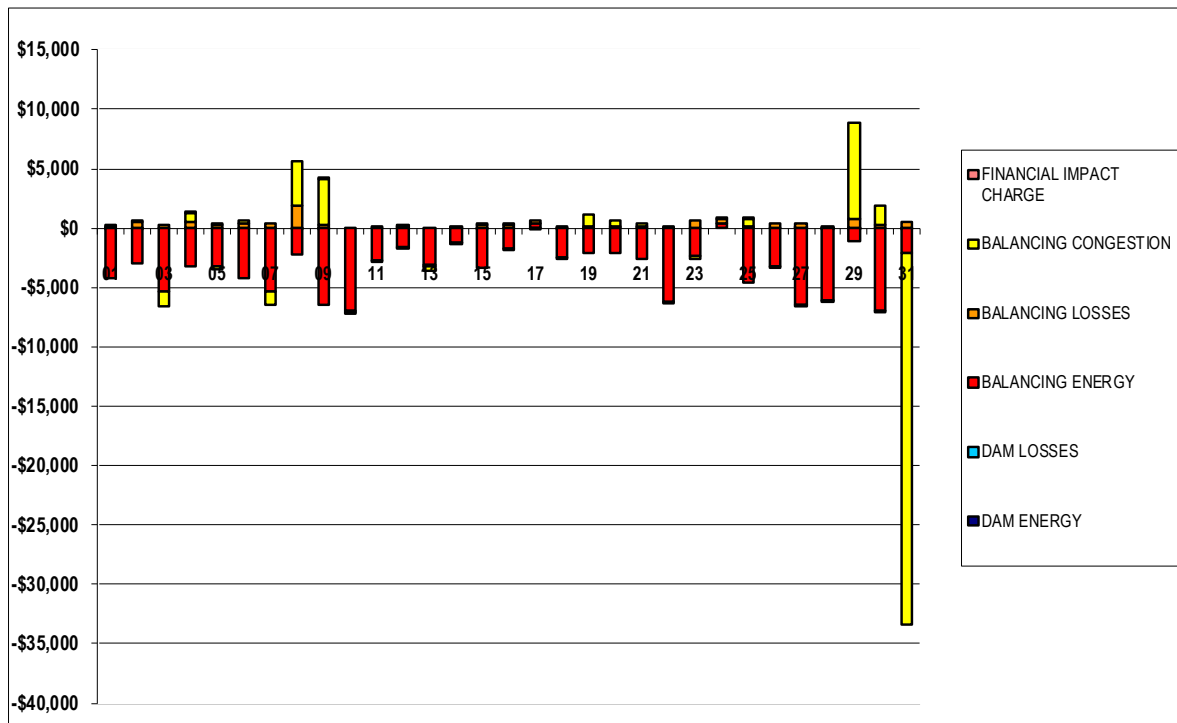
	MONDAY	TUESDAY	WEDNESDAY	THURSDAY	FRIDAY	SATURDAY	SUNDAY
	1	2	3	4	5	6	7
DAM NYCA	0	0	0	0	0	0	0
DAM NON-NYCA	0	0	0	0	0	0	0
DAM WHEELS	0	0	0	0	0	0	0
DAM VIRTUAL	0	0	0	0	0	0	0
BALANCING NYCA	(155)	(235)	(105)	(485)	40	(59)	(69)
BALANCING NON-NYCA	0	0	0	0	0	0	0
BALANCING WHEELS	0	0	0	0	0	0	0
BALANCING VIRTUAL	0	0	0	0	0	0	0
UFE/LOSSES	(63)	(43)	(58)	(40)	(42)	(43)	(43)
	8	9	10	11	12	13	14
DAM NYCA	0	0	0	0	0	0	0
DAM NON-NYCA	0	0	0	0	0	0	0
DAM WHEELS	0	0	0	0	0	0	0
DAM VIRTUAL	0	0	0	0	0	0	0
BALANCING NYCA	(756)	(58)	(66)	(97)	(229)	(164)	(171)
BALANCING NON-NYCA	0	0	0	0	0	0	0
BALANCING WHEELS	0	0	0	0	0	0	0
BALANCING VIRTUAL	0	0	0	0	0	0	0
UFE/LOSSES	(18)	(56)	(71)	(37)	(25)	(58)	(25)
	15	16	17	18	19	20	21
DAM NYCA	0	0	0	0	0	0	0
DAM NON-NYCA	0	0	0	0	0	0	0
DAM WHEELS	0	0	0	0	0	0	0
DAM VIRTUAL	0	0	0	0	0	0	0
BALANCING NYCA	(320)	(368)	(375)	(241)	(124)	(446)	(334)
BALANCING NON-NYCA	0	0	0	0	0	0	0
BALANCING WHEELS	0	0	0	0	0	0	0
BALANCING VIRTUAL	0	0	0	0	0	0	0
UFE/LOSSES	(44)	(24)	1	(40)	(29)	(38)	(33)
	22	23	24	25	26	27	28
DAM NYCA	0	0	0	0	0	0	0
DAM NON-NYCA	0	0	0	0	0	0	0
DAM WHEELS	0	0	0	0	0	0	0
DAM VIRTUAL	0	0	0	0	0	0	0
BALANCING NYCA	(313)	(233)	(170)	(217)	(300)	(175)	(159)
BALANCING NON-NYCA	0	0	0	0	0	0	0
BALANCING WHEELS	0	0	0	0	0	0	0
BALANCING VIRTUAL	0	0	0	0	0	0	0
UFE/LOSSES	(57)	(23)	740	(42)	(35)	(94)	(96)
	29	30	31				
DAM NYCA	0	0	0				
DAM NON-NYCA	0	0	0				
DAM WHEELS	0	0	0				
DAM VIRTUAL	0	0	0				
BALANCING NYCA	(185)	(171)	(935)				
BALANCING NON-NYCA	0	0	0				
BALANCING WHEELS	0	0	0				
BALANCING VIRTUAL	0	0	0				
UFE/LOSSES	(228)	(260)	(235)				



SETTLEMENTS REPORT
 August 2022 Settlement Adjustment
 January 9, 2023

Settlement Adjustment – Market Residuals Delta Analysis

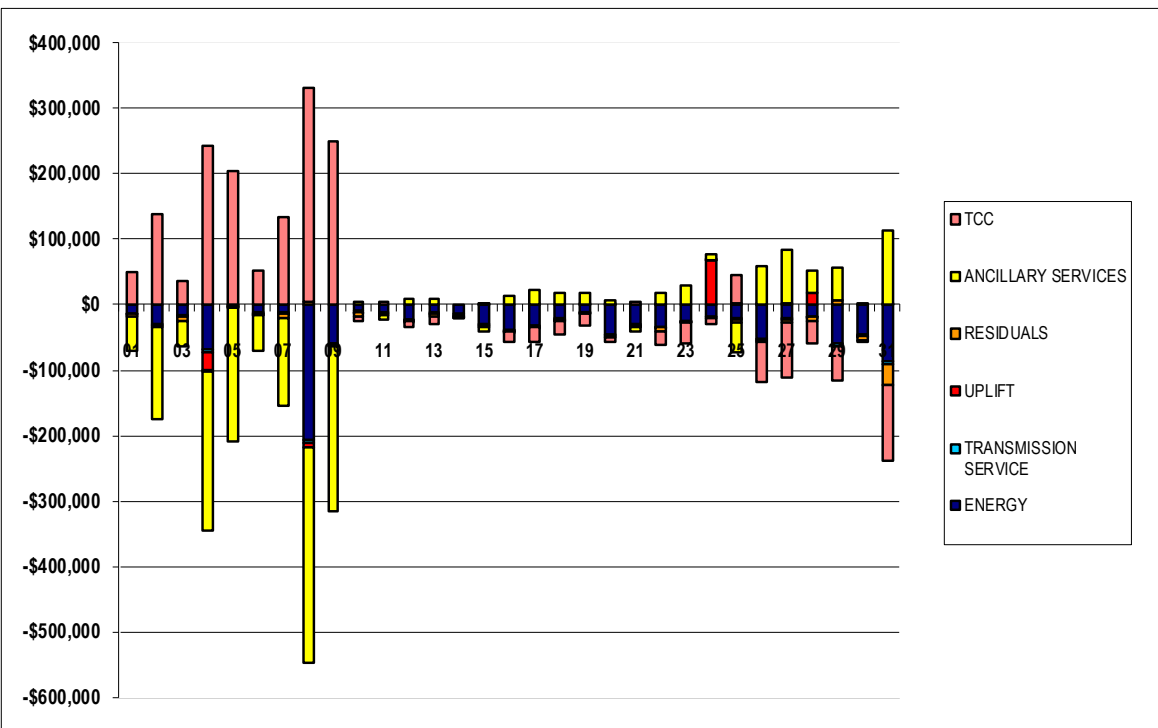
	MONDAY	TUESDAY	WEDNESDAY	THURSDAY	FRIDAY	SATURDAY	SUNDAY
	1	2	3	4	5	6	7
DAM ENERGY	\$0.00	\$0.00	\$0.00	\$0.00	\$0.01	\$0.00	\$0.01
DAM LOSSES	(\$0.01)	(\$0.01)	\$0.00	(\$0.01)	\$0.00	\$0.00	\$0.00
BALANCING ENERGY	(\$4,233.59)	(\$3,024.62)	(\$5,310.60)	(\$3,252.58)	(\$3,229.83)	(\$4,163.86)	(\$5,391.61)
BALANCING LOSSES	\$185.58	\$471.07	\$283.72	\$562.08	\$230.51	\$399.58	\$361.81
BALANCING CONGESTION	\$0.62	\$161.54	(\$1,331.06)	\$730.99	(\$207.06)	\$235.23	(\$1,106.25)
FINANCIAL IMPACT CHARGE	\$0.00	\$0.00	\$0.00	\$0.02	\$0.11	\$0.00	\$0.00
	8	9	10	11	12	13	14
DAM ENERGY	(\$0.01)	(\$0.01)	\$0.00	\$0.00	\$0.00	\$0.00	\$0.00
DAM LOSSES	\$0.01	\$0.00	\$0.01	\$0.00	\$0.00	\$0.00	\$0.00
BALANCING ENERGY	(\$2,227.83)	(\$6,480.56)	(\$6,904.94)	(\$2,697.22)	(\$1,600.86)	(\$3,150.22)	(\$1,260.65)
BALANCING LOSSES	\$1,861.45	\$214.67	(\$159.00)	\$125.24	\$167.09	(\$127.56)	\$98.21
BALANCING CONGESTION	\$3,747.91	\$3,873.52	(\$70.23)	(\$125.91)	\$4.19	(\$264.34)	(\$2.42)
FINANCIAL IMPACT CHARGE	\$0.00	\$0.10	\$0.00	\$0.00	(\$0.06)	\$0.00	\$0.00
	15	16	17	18	19	20	21
DAM ENERGY	(\$0.01)	\$0.00	\$0.00	(\$0.01)	\$0.01	\$0.00	\$0.00
DAM LOSSES	\$0.01	\$0.00	\$0.01	(\$0.01)	(\$0.01)	\$0.00	\$0.00
BALANCING ENERGY	(\$3,339.18)	(\$1,746.17)	\$447.87	(\$2,483.08)	(\$2,060.05)	(\$2,069.14)	(\$2,560.00)
BALANCING LOSSES	\$241.41	\$253.60	\$242.42	\$77.04	\$100.10	\$205.42	\$157.91
BALANCING CONGESTION	\$67.36	(\$72.08)	(\$13.35)	(\$104.60)	\$1,076.16	\$381.81	\$279.12
FINANCIAL IMPACT CHARGE	\$0.00	\$0.04	\$0.00	\$0.00	\$0.00	\$0.00	\$0.00
	22	23	24	25	26	27	28
DAM ENERGY	(\$0.01)	\$0.01	\$0.00	\$0.00	\$0.00	\$0.01	(\$0.01)
DAM LOSSES	\$0.00	\$0.00	\$0.00	\$0.00	\$0.00	\$0.01	\$0.00
BALANCING ENERGY	(\$6,200.74)	(\$2,383.08)	\$414.43	(\$4,540.76)	(\$3,182.42)	(\$6,472.17)	(\$6,125.16)
BALANCING LOSSES	\$181.24	\$646.57	\$385.35	\$207.13	\$358.00	\$352.75	\$189.63
BALANCING CONGESTION	(\$62.26)	(\$238.31)	\$74.15	\$526.19	(\$96.37)	(\$20.90)	(\$67.67)
FINANCIAL IMPACT CHARGE	\$0.00	\$0.00	\$0.00	\$0.01	\$0.00	\$0.00	\$0.00
	29	30	31				
DAM ENERGY	\$0.00	\$0.00	(\$0.01)				
DAM LOSSES	(\$0.01)	\$0.00	\$0.00				
BALANCING ENERGY	(\$1,049.70)	(\$6,956.59)	(\$2,126.36)				
BALANCING LOSSES	\$830.97	\$302.16	\$470.87				
BALANCING CONGESTION	\$8,069.26	\$1,530.26	(\$31,256.43)				
FINANCIAL IMPACT CHARGE	\$0.00	(\$0.06)	\$0.00				



SETTLEMENTS REPORT
August 2022 Settlement Adjustment
January 9, 2023

Settlement Adjustment – Market Costs Delta Analysis

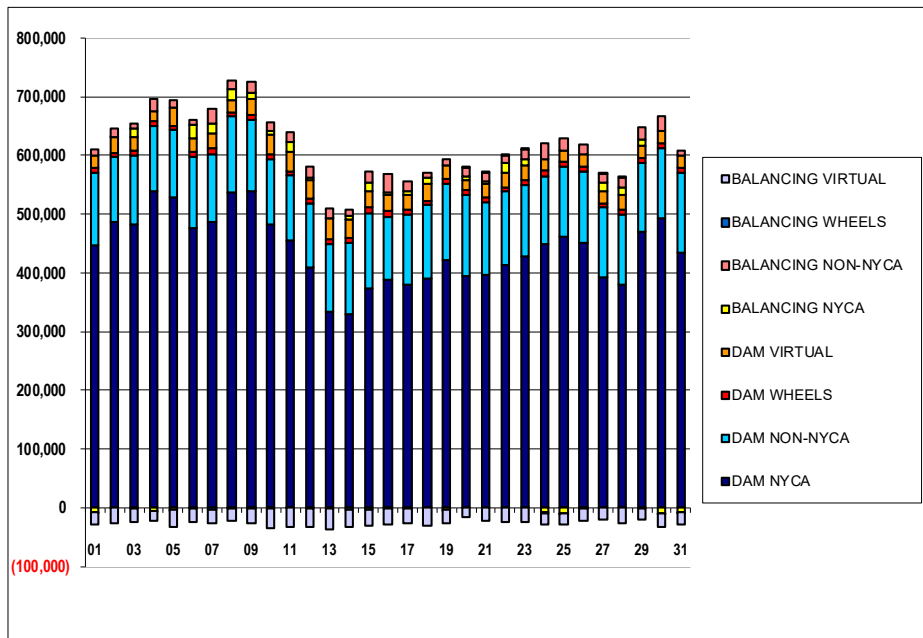
	MONDAY	TUESDAY	WEDNESDAY	THURSDAY	FRIDAY	SATURDAY	SUNDAY
	1	2	3	4	5	6	7
ENERGY	(\$12,908.32)	(\$29,532.97)	(\$16,468.17)	(\$68,598.47)	(\$57.11)	(\$12,125.47)	(\$12,512.49)
TRANSMISSION SERVICE	(\$1,909.91)	(\$2,593.93)	(\$2,686.64)	(\$3,187.66)	(\$1,719.23)	(\$1,404.14)	(\$1,152.69)
UPLIFT	(\$0.02)	\$0.14	\$15.16	(\$27,591.31)	(\$4.24)	(\$3.17)	(\$138.14)
RESIDUALS	(\$4,047.40)	(\$2,392.02)	(\$6,357.94)	(\$1,959.50)	(\$3,206.26)	(\$3,529.05)	(\$6,136.04)
ANCILLARY SERVICES	(\$51,448.89)	(\$141,485.36)	(\$37,582.05)	(\$244,685.40)	(\$204,851.62)	(\$52,805.11)	(\$134,511.04)
TCC	\$50,032.79	\$139,394.60	\$35,598.77	\$242,270.08	\$203,638.35	\$51,952.61	\$133,664.10
	8	9	10	11	12	13	14
ENERGY	(\$207,086.37)	(\$59,260.53)	(\$9,433.36)	(\$12,158.75)	(\$21,905.82)	(\$11,547.57)	(\$14,578.22)
TRANSMISSION SERVICE	(\$3,920.05)	(\$2,949.35)	(\$1,497.59)	(\$1,870.44)	(\$1,922.44)	(\$2,831.46)	(\$2,223.92)
UPLIFT	(\$5,962.35)	(\$79.62)	(\$9.56)	(\$0.02)	(\$216.69)	(\$0.33)	\$0.05
RESIDUALS	\$3,381.53	(\$2,392.28)	(\$7,134.16)	(\$2,697.89)	(\$1,429.64)	(\$3,542.12)	(\$1,164.86)
ANCILLARY SERVICES	(\$330,381.53)	(\$251,968.03)	\$4,974.49	(\$6,048.49)	\$8,344.89	\$8,704.01	(\$123.33)
TCC	\$327,348.65	\$249,919.61	(\$6,125.24)	\$4,686.49	(\$9,778.43)	(\$10,759.35)	(\$1,512.72)
	15	16	17	18	19	20	21
ENERGY	(\$29,734.07)	(\$37,760.06)	(\$32,223.54)	(\$21,004.31)	(\$10,799.65)	(\$46,225.16)	(\$29,327.36)
TRANSMISSION SERVICE	(\$2,314.66)	(\$1,889.41)	(\$2,022.36)	(\$1,849.29)	(\$1,534.80)	(\$2,185.48)	(\$1,881.88)
UPLIFT	\$178.91	(\$249.42)	(\$0.33)	(\$259.28)	\$39.48	\$1.13	(\$0.25)
RESIDUALS	(\$3,030.41)	(\$1,564.61)	\$676.95	(\$2,510.66)	(\$883.79)	(\$1,481.91)	(\$2,122.97)
ANCILLARY SERVICES	(\$4,776.16)	\$12,832.17	\$21,132.83	\$18,020.27	\$18,507.55	\$6,229.52	(\$7,032.47)
TCC	\$3,070.23	(\$14,307.93)	(\$22,675.94)	(\$19,422.90)	(\$19,638.21)	(\$7,961.68)	\$5,590.83
	22	23	24	25	26	27	28
ENERGY	(\$33,345.43)	(\$24,290.28)	(\$17,619.15)	(\$21,504.13)	(\$52,179.98)	(\$19,726.05)	(\$17,235.63)
TRANSMISSION SERVICE	(\$1,876.83)	(\$1,712.89)	(\$1,849.44)	(\$2,020.29)	(\$2,845.38)	(\$1,928.78)	(\$1,968.88)
UPLIFT	\$0.94	(\$36.31)	\$67,662.33	\$1,608.51	\$0.27	\$2,460.67	\$18,811.68
RESIDUALS	(\$6,081.77)	(\$1,974.81)	\$873.93	(\$3,807.43)	(\$2,920.79)	(\$6,140.30)	(\$6,003.21)
ANCILLARY SERVICES	\$19,013.00	\$29,243.30	\$8,600.90	(\$46,359.55)	\$58,834.93	\$82,144.53	\$33,006.84
TCC	(\$20,453.40)	(\$30,542.69)	(\$10,196.41)	\$44,851.51	(\$60,951.47)	(\$83,588.61)	(\$34,470.67)
	29	30	31				
ENERGY	(\$59,524.11)	(\$45,185.59)	(\$86,640.11)				
TRANSMISSION SERVICE	(\$3,904.15)	(\$2,903.53)	(\$3,565.09)				
UPLIFT	(\$784.86)	(\$251.42)	\$0.92				
RESIDUALS	\$7,850.52	(\$5,124.23)	(\$32,911.93)				
ANCILLARY SERVICES	\$49,600.24	\$1,411.63	\$113,343.24				
TCC	(\$52,500.69)	(\$3,610.24)	(\$116,252.42)				



SETTLEMENTS REPORT
August 2022 Settlement Adjustment
January 9, 2023

Initial Settlement – Market Supply Analysis

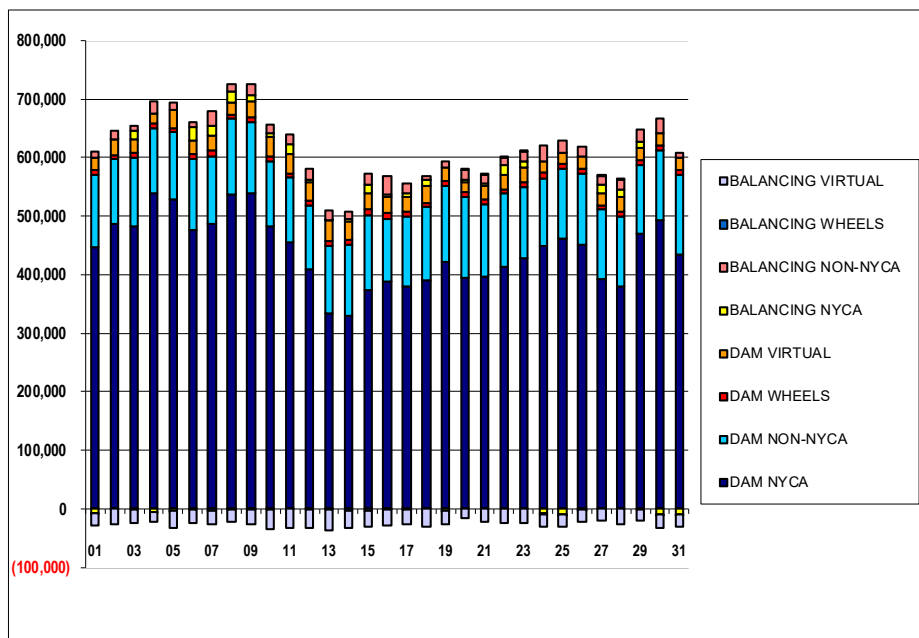
	MONDAY	TUESDAY	WEDNESDAY	THURSDAY	FRIDAY	SATURDAY	SUNDAY
	1	2	3	4	5	6	7
DAM NYCA	446,436	485,933	482,018	539,631	528,384	475,613	486,454
DAM NON-NYCA	124,944	110,914	117,540	111,390	114,683	122,214	115,480
DAM WHEELS	8,255	7,766	8,085	7,757	7,809	9,048	10,609
DAM VIRTUAL	20,787	26,174	23,809	16,692	30,515	22,857	24,340
BALANCING NYCA	(7,423)	1,548	14,152	(5,027)	(3,143)	22,011	16,812
BALANCING NON-NYCA	10,373	14,267	8,037	20,655	11,774	9,390	24,866
BALANCING WHEELS	(505)	(15)	(831)	(307)	(66)	(1,196)	(3,117)
BALANCING VIRTUAL	(20,787)	(26,174)	(23,809)	(16,692)	(30,515)	(22,857)	(24,340)
	8	9	10	11	12	13	14
DAM NYCA	536,390	538,686	482,781	455,880	409,307	334,142	329,582
DAM NON-NYCA	129,746	122,602	110,124	110,188	109,659	114,804	121,056
DAM WHEELS	8,042	7,886	8,645	7,276	7,586	9,008	9,940
DAM VIRTUAL	20,919	26,439	33,174	33,610	31,838	34,394	30,085
BALANCING NYCA	17,814	10,975	7,789	15,292	4,401	761	5,720
BALANCING NON-NYCA	14,142	18,142	13,867	18,425	18,114	17,050	12,314
BALANCING WHEELS	(692)	(409)	(1,308)	(76)	(386)	(1,808)	(2,896)
BALANCING VIRTUAL	(20,919)	(26,439)	(33,174)	(33,610)	(31,838)	(34,394)	(30,085)
	15	16	17	18	19	20	21
DAM NYCA	374,274	388,895	380,849	390,038	422,008	395,154	395,708
DAM NON-NYCA	126,398	107,020	118,957	125,261	129,995	137,909	125,621
DAM WHEELS	10,581	8,754	8,863	7,400	8,037	7,200	7,200
DAM VIRTUAL	27,997	27,345	24,905	29,595	22,078	16,999	22,283
BALANCING NYCA	14,633	4,595	5,713	9,189	(3,490)	6,348	5,961
BALANCING NON-NYCA	18,236	31,979	16,242	8,255	10,716	16,170	14,023
BALANCING WHEELS	(2,550)	(889)	(1,513)	0	(787)	540	50
BALANCING VIRTUAL	(27,997)	(27,345)	(24,905)	(29,595)	(22,078)	(16,999)	(22,283)
	22	23	24	25	26	27	28
DAM NYCA	414,251	427,937	448,945	460,791	451,066	392,269	379,794
DAM NON-NYCA	124,738	122,434	116,123	119,644	120,757	119,418	119,839
DAM WHEELS	7,200	7,200	8,803	8,302	8,535	7,200	7,353
DAM VIRTUAL	23,777	24,692	20,274	19,398	21,656	20,716	26,794
BALANCING NYCA	17,330	11,564	(8,079)	(9,218)	(47)	14,007	11,458
BALANCING NON-NYCA	12,061	16,559	27,160	21,897	17,546	15,737	17,159
BALANCING WHEELS	619	450	(1,228)	(966)	(1,259)	350	397
BALANCING VIRTUAL	(23,777)	(24,692)	(20,274)	(19,398)	(21,656)	(20,716)	(26,794)
	29	30	31				
DAM NYCA	470,785	492,753	434,679				
DAM NON-NYCA	117,554	118,796	136,245				
DAM WHEELS	8,379	8,623	7,255				
DAM VIRTUAL	19,920	21,519	21,150				
BALANCING NYCA	10,445	(9,025)	(7,857)				
BALANCING NON-NYCA	21,883	24,888	9,963				
BALANCING WHEELS	(378)	(1,218)	(55)				
BALANCING VIRTUAL	(19,920)	(21,519)	(21,150)				



SETTLEMENTS REPORT
 August 2022 Settlement Adjustment
 January 9, 2023

4-Month Settlement Adjustment – Market Supply Analysis

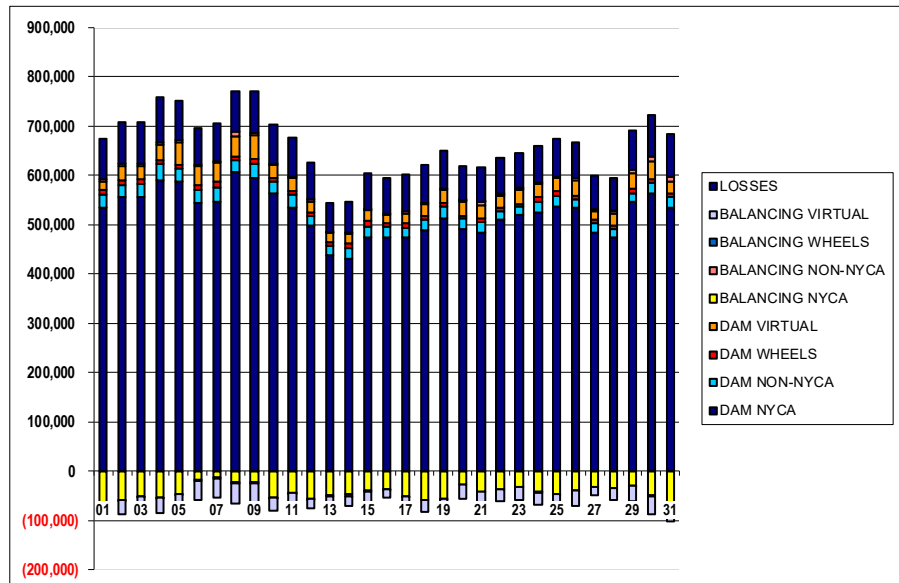
	MONDAY	TUESDAY	WEDNESDAY	THURSDAY	FRIDAY	SATURDAY	SUNDAY
	1	2	3	4	5	6	7
DAM NYCA	446,436	485,933	482,018	539,631	528,384	475,613	486,454
DAM NON-NYCA	124,944	110,914	117,540	111,390	114,683	122,214	115,480
DAM WHEELS	8,255	7,766	8,085	7,757	7,809	9,048	10,609
DAM VIRTUAL	20,787	26,174	23,809	16,692	30,515	22,857	24,340
BALANCING NYCA	(7,641)	1,270	13,990	(5,552)	(3,145)	21,909	16,701
BALANCING NON-NYCA	10,373	14,267	8,037	20,655	11,774	9,390	24,866
BALANCING WHEELS	(505)	(15)	(831)	(307)	(66)	(1,196)	(3,117)
BALANCING VIRTUAL	(20,787)	(26,174)	(23,809)	(16,692)	(30,515)	(22,857)	(24,340)
	8	9	10	11	12	13	14
DAM NYCA	536,390	538,686	482,781	455,880	409,307	334,142	329,582
DAM NON-NYCA	129,746	122,602	110,124	110,188	109,659	114,804	121,056
DAM WHEELS	8,042	7,886	8,645	7,276	7,586	9,008	9,940
DAM VIRTUAL	20,919	26,439	33,174	33,610	31,838	34,394	30,085
BALANCING NYCA	17,041	10,860	7,652	15,159	4,147	539	5,524
BALANCING NON-NYCA	14,142	18,142	13,867	18,425	18,114	17,050	12,314
BALANCING WHEELS	(692)	(409)	(1,308)	(76)	(386)	(1,808)	(2,896)
BALANCING VIRTUAL	(20,919)	(26,439)	(33,174)	(33,610)	(31,838)	(34,394)	(30,085)
	15	16	17	18	19	20	21
DAM NYCA	374,274	388,895	380,849	390,038	422,008	395,154	395,708
DAM NON-NYCA	126,398	107,020	118,957	125,261	129,995	137,909	125,621
DAM WHEELS	10,581	8,754	8,863	7,400	8,037	7,200	7,200
DAM VIRTUAL	27,997	27,345	24,905	29,595	22,078	16,999	22,283
BALANCING NYCA	14,269	4,203	5,340	8,908	(3,643)	5,864	5,594
BALANCING NON-NYCA	18,236	31,979	16,242	8,255	10,716	16,170	14,023
BALANCING WHEELS	(2,550)	(889)	(1,513)	0	(787)	540	50
BALANCING VIRTUAL	(27,997)	(27,345)	(24,905)	(29,595)	(22,078)	(16,999)	(22,283)
	22	23	24	25	26	27	28
DAM NYCA	414,251	427,937	448,945	460,791	451,066	392,269	379,794
DAM NON-NYCA	124,738	122,434	116,123	119,644	120,757	119,418	119,839
DAM WHEELS	7,200	7,200	8,803	8,302	8,535	7,200	7,353
DAM VIRTUAL	23,777	24,692	20,274	19,398	21,656	20,716	26,794
BALANCING NYCA	16,960	11,308	(8,233)	(9,476)	(382)	13,738	11,204
BALANCING NON-NYCA	12,061	16,559	27,160	21,897	17,546	15,737	17,159
BALANCING WHEELS	619	450	(1,228)	(966)	(1,259)	350	397
BALANCING VIRTUAL	(23,777)	(24,692)	(20,274)	(19,398)	(21,656)	(20,716)	(26,794)
	29	30	31				
DAM NYCA	470,785	492,753	434,679				
DAM NON-NYCA	117,554	118,796	136,245				
DAM WHEELS	8,379	8,623	7,255				
DAM VIRTUAL	19,920	21,519	21,150				
BALANCING NYCA	10,032	(9,456)	(9,027)				
BALANCING NON-NYCA	21,883	24,888	9,963				
BALANCING WHEELS	(378)	(1,218)	(55)				
BALANCING VIRTUAL	(19,920)	(21,519)	(21,150)				



SETTLEMENTS REPORT
August 2022 Settlement Adjustment
January 9, 2023

Initial Settlement – Market Withdrawals Analysis

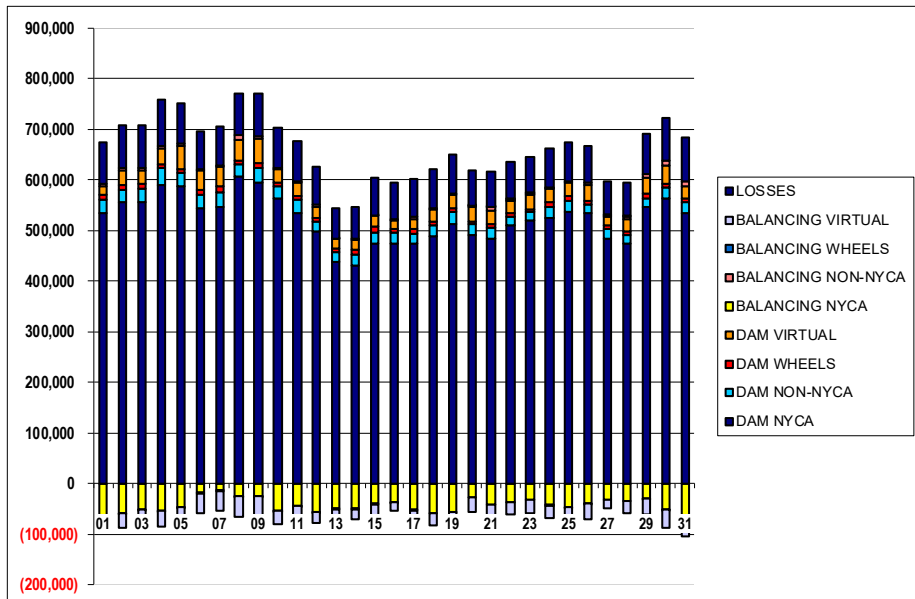
	MONDAY	TUESDAY	WEDNESDAY	THURSDAY	FRIDAY	SATURDAY	SUNDAY
	1	2	3	4	5	6	7
DAM NYCA	534,707	556,330	556,224	589,188	588,164	544,833	545,886
DAM NON-NYCA	26,592	24,601	27,091	34,009	26,375	25,269	30,023
DAM WHEELS	8,255	7,766	8,085	7,757	7,809	9,048	10,609
DAM VIRTUAL	18,797	29,110	26,650	31,783	45,392	38,566	38,806
BALANCING NYCA	(73,727)	(58,211)	(50,375)	(52,862)	(47,607)	(18,208)	(12,063)
BALANCING NON-NYCA	4,096	5,653	5,285	5,100	3,707	2,755	2,348
BALANCING WHEELS	(505)	(15)	(831)	(307)	(66)	(1,196)	(3,117)
BALANCING VIRTUAL	(18,797)	(29,110)	(26,650)	(31,783)	(45,392)	(38,566)	(38,806)
UFE/LOSSES	82,663	84,289	83,523	91,214	81,058	74,578	77,418
	8	9	10	11	12	13	14
DAM NYCA	607,820	594,435	562,238	535,217	498,791	438,258	431,729
DAM NON-NYCA	22,354	29,730	24,886	25,244	19,411	18,073	20,834
DAM WHEELS	8,042	7,886	8,645	7,276	7,586	9,008	9,940
DAM VIRTUAL	41,768	49,367	26,467	27,015	20,605	17,344	18,967
BALANCING NYCA	(23,492)	(23,604)	(53,378)	(43,111)	(55,611)	(49,946)	(47,734)
BALANCING NON-NYCA	8,491	5,059	1,893	2,755	3,933	1,376	1,838
BALANCING WHEELS	(692)	(409)	(1,308)	(76)	(386)	(1,808)	(2,896)
BALANCING VIRTUAL	(41,768)	(49,367)	(26,467)	(27,015)	(20,605)	(17,344)	(18,967)
UFE/LOSSES	82,921	84,785	78,922	79,680	74,958	58,996	62,005
	15	16	17	18	19	20	21
DAM NYCA	472,979	473,449	474,860	487,638	513,764	490,850	484,706
DAM NON-NYCA	23,972	21,833	18,710	22,073	22,772	20,664	20,038
DAM WHEELS	10,581	8,754	8,863	7,400	8,037	7,200	7,200
DAM VIRTUAL	21,072	16,609	20,761	24,140	26,162	27,766	28,351
BALANCING NYCA	(38,711)	(36,234)	(50,992)	(57,395)	(55,829)	(27,595)	(40,570)
BALANCING NON-NYCA	1,930	766	4,777	3,593	2,280	2,850	6,454
BALANCING WHEELS	(2,550)	(889)	(1,513)	0	(787)	540	50
BALANCING VIRTUAL	(21,072)	(16,609)	(20,761)	(24,140)	(26,162)	(27,766)	(28,351)
UFE/LOSSES	73,370	72,675	74,406	76,835	76,241	68,813	70,685
	22	23	24	25	26	27	28
DAM NYCA	509,118	520,564	525,412	536,198	534,529	484,240	473,092
DAM NON-NYCA	17,737	15,063	22,036	23,188	15,744	18,085	18,970
DAM WHEELS	7,200	7,200	8,803	8,302	8,535	7,200	7,353
DAM VIRTUAL	24,401	27,336	26,113	27,757	30,152	18,242	23,520
BALANCING NYCA	(36,117)	(32,202)	(41,889)	(45,911)	(38,463)	(31,061)	(35,460)
BALANCING NON-NYCA	3,572	3,708	2,650	1,528	4,651	2,775	5,420
BALANCING WHEELS	619	450	(1,228)	(966)	(1,259)	350	397
BALANCING VIRTUAL	(24,401)	(27,336)	(26,113)	(27,757)	(30,152)	(18,242)	(23,520)
UFE/LOSSES	74,070	71,362	75,940	78,111	72,860	67,393	66,228
	29	30	31				
DAM NYCA	546,383	563,453	535,414				
DAM NON-NYCA	18,081	20,584	21,535				
DAM WHEELS	8,379	8,623	7,255				
DAM VIRTUAL	31,741	36,137	22,504				
BALANCING NYCA	(29,608)	(50,112)	(80,391)				
BALANCING NON-NYCA	7,147	8,445	10,713				
BALANCING WHEELS	(378)	(1,218)	(55)				
BALANCING VIRTUAL	(31,741)	(36,137)	(22,504)				
UFE/LOSSES	78,663	85,041	85,760				



SETTLEMENTS REPORT
August 2022 Settlement Adjustment
January 9, 2023

4-Month Settlement Adjustment – Market Withdrawals Analysis

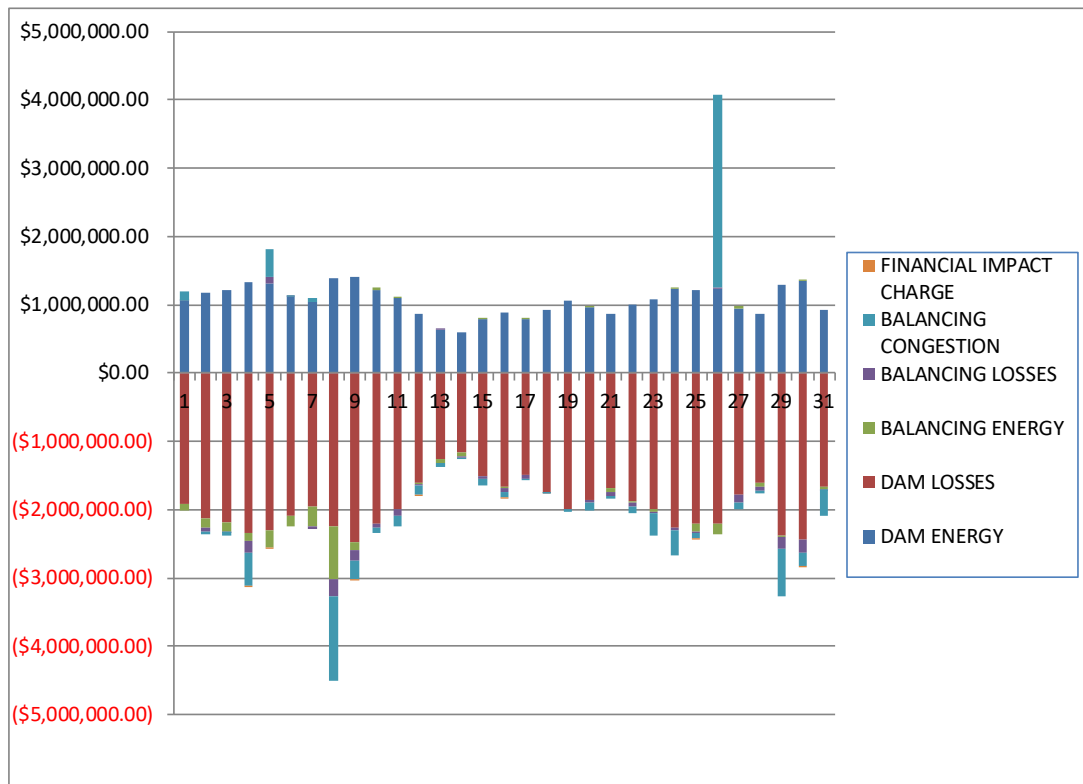
	MONDAY	TUESDAY	WEDNESDAY	THURSDAY	FRIDAY	SATURDAY	SUNDAY
	1	2	3	4	5	6	7
DAM NYCA	534,707	556,330	556,224	589,188	588,164	544,833	545,886
DAM NON-NYCA	26,592	24,601	27,091	34,009	26,375	25,269	30,023
DAM WHEELS	8,255	7,766	8,085	7,757	7,809	9,048	10,609
DAM VIRTUAL	18,797	29,110	26,650	31,783	45,392	38,566	38,806
BALANCING NYCA	(73,882)	(58,446)	(50,480)	(53,347)	(47,567)	(18,267)	(12,132)
BALANCING NON-NYCA	4,096	5,653	5,285	5,100	3,707	2,755	2,348
BALANCING WHEELS	(505)	(15)	(831)	(307)	(66)	(1,196)	(3,117)
BALANCING VIRTUAL	(18,797)	(29,110)	(26,650)	(31,783)	(45,392)	(38,566)	(38,806)
UFE/LOSSES	82,600	84,246	83,465	91,175	81,017	74,534	77,375
	8	9	10	11	12	13	14
DAM NYCA	607,820	594,435	562,238	535,217	498,791	438,258	431,729
DAM NON-NYCA	22,354	29,730	24,886	25,244	19,411	18,073	20,834
DAM WHEELS	8,042	7,886	8,645	7,276	7,586	9,008	9,940
DAM VIRTUAL	41,768	49,367	26,467	27,015	20,605	17,344	18,967
BALANCING NYCA	(24,248)	(23,662)	(53,444)	(43,208)	(55,840)	(50,110)	(47,905)
BALANCING NON-NYCA	8,491	5,059	1,893	2,755	3,933	1,376	1,838
BALANCING WHEELS	(692)	(409)	(1,308)	(76)	(386)	(1,808)	(2,896)
BALANCING VIRTUAL	(41,768)	(49,367)	(26,467)	(27,015)	(20,605)	(17,344)	(18,967)
UFE/LOSSES	82,903	84,729	78,851	79,643	74,933	58,939	61,980
	15	16	17	18	19	20	21
DAM NYCA	472,979	473,449	474,860	487,638	513,764	490,850	484,706
DAM NON-NYCA	23,972	21,833	18,710	22,073	22,772	20,664	20,038
DAM WHEELS	10,581	8,754	8,863	7,400	8,037	7,200	7,200
DAM VIRTUAL	21,072	16,609	20,761	24,140	26,162	27,766	28,351
BALANCING NYCA	(39,031)	(36,602)	(51,367)	(57,637)	(55,953)	(28,041)	(40,904)
BALANCING NON-NYCA	1,930	766	4,777	3,593	2,280	2,850	6,454
BALANCING WHEELS	(2,550)	(889)	(1,513)	0	(787)	540	50
BALANCING VIRTUAL	(21,072)	(16,609)	(20,761)	(24,140)	(26,162)	(27,766)	(28,351)
UFE/LOSSES	73,326	72,651	74,408	76,795	76,212	68,774	70,652
	22	23	24	25	26	27	28
DAM NYCA	509,118	520,564	525,412	536,198	534,529	484,240	473,092
DAM NON-NYCA	17,737	15,063	22,036	23,188	15,744	18,085	18,970
DAM WHEELS	7,200	7,200	8,803	8,302	8,535	7,200	7,353
DAM VIRTUAL	24,401	27,336	26,113	27,757	30,152	18,242	23,520
BALANCING NYCA	(36,430)	(32,435)	(42,059)	(46,128)	(38,763)	(31,236)	(35,619)
BALANCING NON-NYCA	3,572	3,708	2,650	1,528	4,651	2,775	5,420
BALANCING WHEELS	619	450	(1,228)	(966)	(1,259)	350	397
BALANCING VIRTUAL	(24,401)	(27,336)	(26,113)	(27,757)	(30,152)	(18,242)	(23,520)
UFE/LOSSES	74,013	71,338	76,680	78,070	72,825	67,298	66,132
	29	30	31				
DAM NYCA	546,383	563,453	535,414				
DAM NON-NYCA	18,081	20,584	21,535				
DAM WHEELS	8,379	8,623	7,255				
DAM VIRTUAL	31,741	36,137	22,504				
BALANCING NYCA	(29,793)	(50,283)	(81,327)				
BALANCING NON-NYCA	7,147	8,445	10,713				
BALANCING WHEELS	(378)	(1,218)	(55)				
BALANCING VIRTUAL	(31,741)	(36,137)	(22,504)				
UFE/LOSSES	78,435	84,781	85,525				



SETTLEMENTS REPORT
August 2022 Settlement Adjustment
January 9, 2023

Initial Settlement – Market Residuals Analysis

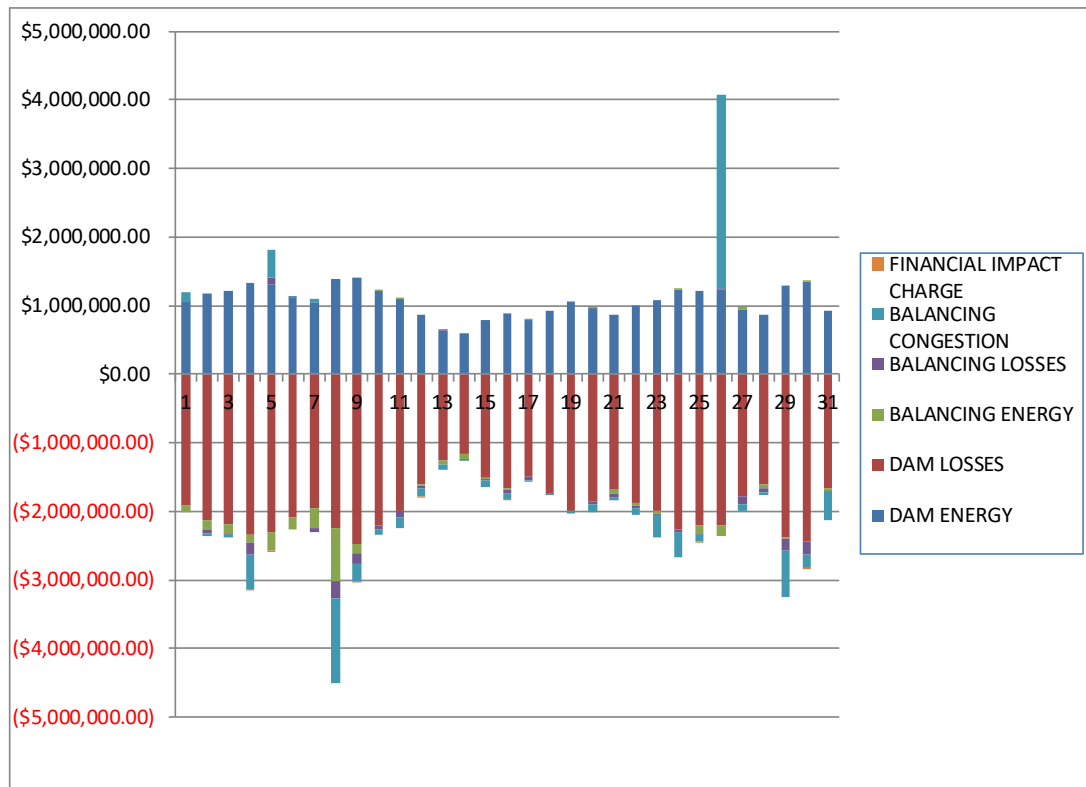
	MONDAY	TUESDAY	WEDNESDAY	THURSDAY	FRIDAY	SATURDAY	SUNDAY
	1	2	3	4	5	6	7
DAM ENERGY	\$1,049,427.37	\$1,172,830.32	\$1,206,495.94	\$1,319,757.69	\$1,300,176.70	\$1,111,538.86	\$1,046,862.96
DAM LOSSES	(\$1,910,244.05)	(\$2,121,065.42)	(\$2,186,328.06)	(\$2,348,227.15)	(\$2,310,260.59)	(\$2,096,616.57)	(\$1,951,810.19)
BALANCING ENERGY	(\$96,215.06)	(\$134,630.69)	(\$136,383.61)	(\$115,878.86)	(\$253,826.37)	(\$156,011.41)	(\$293,497.91)
BALANCING LOSSES	\$15,285.66	(\$61,573.07)	(\$6,315.24)	(\$174,200.07)	\$111,239.81	\$5,155.15	(\$46,785.74)
BALANCING CONGESTION	\$135,118.51	(\$44,167.33)	(\$54,785.10)	(\$485,490.03)	\$393,842.61	\$1,916.29	\$58,030.57
FINANCIAL IMPACT CHARGE	\$0.00	\$0.00	\$0.00	(\$40.16)	(\$198.98)	\$0.00	\$0.00
	8	9	10	11	12	13	14
DAM ENERGY	\$1,378,266.39	\$1,399,640.44	\$1,207,535.53	\$1,101,134.66	\$872,539.60	\$637,452.52	\$602,484.13
DAM LOSSES	(\$2,236,345.01)	(\$2,482,973.58)	(\$2,215,670.93)	(\$1,998,973.80)	(\$1,605,880.86)	(\$1,250,907.12)	(\$1,154,333.86)
BALANCING ENERGY	(\$73,209.69)	(\$120,021.91)	\$35,333.79	\$7,636.09	(\$14,022.22)	(\$60,100.75)	(\$76,807.15)
BALANCING LOSSES	(\$259,623.80)	(\$152,479.92)	(\$58,521.24)	(\$92,884.86)	(\$35,016.80)	\$12,015.13	(\$10,104.43)
BALANCING CONGESTION	(\$1,234,138.27)	(\$268,348.72)	(\$73,034.08)	(\$152,503.94)	(\$126,533.62)	(\$74,506.40)	(\$9,945.34)
FINANCIAL IMPACT CHARGE	\$0.00	(\$209.23)	\$0.00	\$0.00	(\$30.30)	\$0.00	\$0.00
	15	16	17	18	19	20	21
DAM ENERGY	\$789,402.18	\$888,333.09	\$792,935.85	\$931,676.75	\$1,066,067.94	\$959,911.06	\$864,110.26
DAM LOSSES	(\$1,519,543.23)	(\$1,659,534.69)	(\$1,495,660.73)	(\$1,740,602.97)	(\$1,986,198.46)	(\$1,860,144.49)	(\$1,690,516.69)
BALANCING ENERGY	\$912.59	(\$32,911.88)	\$13,459.12	(\$2,339.72)	(\$975.71)	\$4,272.10	(\$53,335.55)
BALANCING LOSSES	(\$25,768.13)	(\$48,482.11)	(\$46,113.42)	(\$3,218.98)	(\$9,881.87)	(\$46,115.68)	(\$47,912.51)
BALANCING CONGESTION	(\$94,321.62)	(\$81,308.31)	(\$17,061.44)	(\$13,564.93)	(\$39,362.75)	(\$108,133.11)	(\$48,772.86)
FINANCIAL IMPACT CHARGE	\$0.00	(\$41.05)	\$0.00	\$0.00	\$0.00	\$0.00	\$0.00
	22	23	24	25	26	27	28
DAM ENERGY	\$997,429.29	\$1,085,487.53	\$1,222,880.08	\$1,214,733.21	\$1,224,875.63	\$933,928.71	\$867,301.96
DAM LOSSES	(\$1,879,345.66)	(\$1,989,810.59)	(\$2,255,350.20)	(\$2,208,878.11)	(\$2,208,201.53)	(\$1,772,263.18)	(\$1,606,691.00)
BALANCING ENERGY	(\$23,872.54)	(\$37,066.08)	\$22,428.36	(\$116,622.52)	(\$154,452.51)	\$50,647.37	(\$62,740.55)
BALANCING LOSSES	(\$44,316.35)	(\$22,344.98)	(\$48,067.20)	(\$15,842.91)	\$17,736.38	(\$131,688.40)	(\$45,797.69)
BALANCING CONGESTION	(\$98,528.86)	(\$333,431.83)	(\$362,985.56)	(\$87,595.00)	\$2,828,471.08	(\$81,382.98)	(\$45,728.42)
FINANCIAL IMPACT CHARGE	\$0.00	\$0.00	\$0.00	(\$2.53)	\$0.00	\$0.00	\$0.00
	29	30	31				
DAM ENERGY	\$1,289,218.36	\$1,356,522.64	\$922,921.75				
DAM LOSSES	(\$2,375,584.68)	(\$2,441,903.14)	(\$1,672,711.30)				
BALANCING ENERGY	(\$27,574.23)	\$8,828.35	(\$26,075.46)				
BALANCING LOSSES	(\$169,345.22)	(\$181,475.25)	(\$7,575.25)				
BALANCING CONGESTION	(\$689,259.25)	(\$204,367.18)	(\$385,895.86)				
FINANCIAL IMPACT CHARGE	\$0.00	(\$37.01)	\$0.00				



SETTLEMENTS REPORT
August 2022 Settlement Adjustment
January 9, 2023

4-Month Settlement Adjustment – Market Residuals Analysis

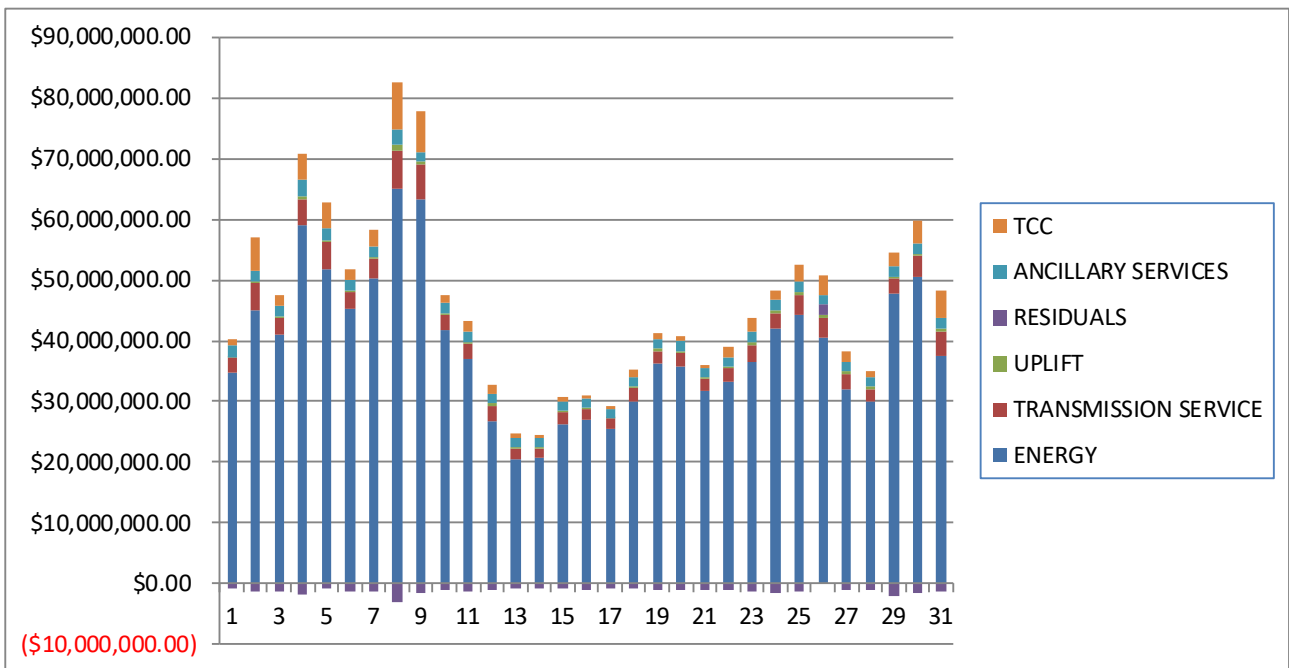
	MONDAY	TUESDAY	WEDNESDAY	THURSDAY	FRIDAY	SATURDAY	SUNDAY
	1	2	3	4	5	6	7
DAM ENERGY	\$1,049,427.37	\$1,172,830.32	\$1,206,495.94	\$1,319,757.69	\$1,300,176.71	\$1,111,538.86	\$1,046,862.97
DAM LOSSES	(\$1,910,244.06)	(\$2,121,065.43)	(\$2,186,328.06)	(\$2,348,227.16)	(\$2,310,260.59)	(\$2,096,616.57)	(\$1,951,810.19)
BALANCING ENERGY	(\$100,448.65)	(\$137,655.31)	(\$141,694.21)	(\$119,131.44)	(\$257,056.20)	(\$160,175.27)	(\$298,889.52)
BALANCING LOSSES	\$15,471.24	(\$61,102.00)	(\$6,031.52)	(\$173,637.99)	\$111,470.32	\$5,554.73	(\$46,423.93)
BALANCING CONGESTION	\$135,119.13	(\$44,005.79)	(\$56,116.16)	(\$484,759.04)	\$393,635.55	\$2,151.52	\$56,924.32
FINANCIAL IMPACT CHARGE	\$0.00	\$0.00	\$0.00	(\$40.14)	(\$198.87)	\$0.00	\$0.00
	8	9	10	11	12	13	14
DAM ENERGY	\$1,378,266.38	\$1,399,640.43	\$1,207,535.53	\$1,101,134.66	\$872,539.60	\$637,452.52	\$602,484.13
DAM LOSSES	(\$2,236,345.00)	(\$2,482,973.58)	(\$2,215,670.92)	(\$1,998,973.80)	(\$1,605,880.86)	(\$1,250,907.12)	(\$1,154,333.86)
BALANCING ENERGY	(\$775,437.52)	(\$126,502.47)	\$28,428.85	\$4,938.87	(\$15,623.08)	(\$63,250.97)	(\$78,067.80)
BALANCING LOSSES	(\$257,762.35)	(\$152,265.25)	(\$58,680.24)	(\$92,759.62)	(\$34,849.71)	\$11,887.57	(\$10,006.22)
BALANCING CONGESTION	(\$1,230,390.36)	(\$264,475.20)	(\$73,104.31)	(\$152,629.85)	(\$126,529.43)	(\$74,770.74)	(\$9,947.76)
FINANCIAL IMPACT CHARGE	\$0.00	(\$209.13)	\$0.00	\$0.00	(\$30.36)	\$0.00	\$0.00
	15	16	17	18	19	20	21
DAM ENERGY	\$789,402.17	\$888,333.09	\$792,935.85	\$931,676.74	\$1,066,067.95	\$959,911.06	\$864,110.26
DAM LOSSES	(\$1,519,543.22)	(\$1,659,534.69)	(\$1,495,660.72)	(\$1,740,602.98)	(\$1,986,198.47)	(\$1,860,144.49)	(\$1,690,516.69)
BALANCING ENERGY	(\$2,426.59)	(\$34,658.05)	\$13,906.99	(\$4,822.80)	(\$3,035.76)	\$2,202.96	(\$55,895.55)
BALANCING LOSSES	(\$25,526.72)	(\$48,228.51)	(\$45,871.00)	(\$3,141.94)	(\$9,781.77)	(\$45,910.26)	(\$47,754.60)
BALANCING CONGESTION	(\$94,254.26)	(\$81,380.39)	(\$17,074.79)	(\$13,669.53)	(\$38,286.59)	(\$107,751.30)	(\$48,493.74)
FINANCIAL IMPACT CHARGE	\$0.00	(\$41.01)	\$0.00	\$0.00	\$0.00	\$0.00	\$0.00
	22	23	24	25	26	27	28
DAM ENERGY	\$997,429.28	\$1,085,487.54	\$1,222,880.08	\$1,214,733.21	\$1,224,875.63	\$933,928.72	\$867,301.95
DAM LOSSES	(\$1,879,345.66)	(\$1,989,810.59)	(\$2,255,350.20)	(\$2,208,878.11)	(\$2,208,201.53)	(\$1,772,263.17)	(\$1,606,691.00)
BALANCING ENERGY	(\$30,073.28)	(\$39,449.16)	\$22,842.79	(\$121,163.28)	(\$157,634.93)	\$44,175.20	(\$68,865.71)
BALANCING LOSSES	(\$44,135.11)	(\$21,698.41)	(\$47,681.85)	(\$15,635.78)	\$18,094.38	(\$131,335.65)	(\$45,608.06)
BALANCING CONGESTION	(\$98,591.12)	(\$333,670.14)	(\$362,911.41)	(\$87,068.81)	\$2,828,374.71	(\$81,403.88)	(\$45,796.09)
FINANCIAL IMPACT CHARGE	\$0.00	\$0.00	\$0.00	(\$2.52)	\$0.00	\$0.00	\$0.00
	29	30	31				
DAM ENERGY	\$1,289,218.36	\$1,356,522.64	\$922,921.74				
DAM LOSSES	(\$2,375,584.69)	(\$2,441,903.14)	(\$1,672,711.30)				
BALANCING ENERGY	(\$28,623.93)	\$1,871.76	(\$28,201.82)				
BALANCING LOSSES	(\$168,514.25)	(\$181,173.09)	(\$7,104.38)				
BALANCING CONGESTION	(\$681,189.99)	(\$202,836.92)	(\$417,152.29)				
FINANCIAL IMPACT CHARGE	\$0.00	(\$37.07)	\$0.00				



SETTLEMENTS REPORT
August 2022 Settlement Adjustment
January 9, 2023

Initial Settlement – Market Costs Analysis

	MONDAY	TUESDAY	WEDNESDAY	THURSDAY	FRIDAY	SATURDAY	SUNDAY
	1	2	3	4	5	6	7
ENERGY	\$34,767,772.33	\$45,109,422.69	\$40,989,263.52	\$58,945,981.71	\$51,784,824.77	\$45,342,576.10	\$50,161,258.02
TRANSMISSION SERVICE	\$2,385,840.58	\$4,376,882.24	\$2,778,002.62	\$4,418,179.56	\$4,434,005.83	\$2,735,966.07	\$3,270,804.83
UPLIFT	\$204,681.91	\$215,905.60	\$226,589.24	\$378,919.63	\$242,928.50	\$285,594.70	\$224,934.67
RESIDUALS	(\$806,627.57)	(\$1,188,606.19)	(\$1,177,316.07)	(\$1,804,078.58)	(\$759,026.82)	(\$1,134,017.68)	(\$1,187,200.31)
ANCILLARY SERVICES	\$1,875,053.56	\$1,879,673.27	\$1,706,245.18	\$2,784,588.80	\$2,072,030.79	\$1,692,912.05	\$1,907,047.69
TCC	\$909,167.88	\$5,371,056.80	\$1,730,830.16	\$4,129,700.25	\$4,095,717.83	\$1,604,426.59	\$2,800,777.46
	8	9	10	11	12	13	14
ENERGY	\$65,058,899.37	\$63,375,370.96	\$41,735,185.76	\$36,985,973.14	\$26,753,071.70	\$20,566,643.53	\$20,694,807.89
TRANSMISSION SERVICE	\$6,102,517.17	\$5,730,065.68	\$2,610,286.76	\$2,552,592.63	\$2,418,759.10	\$1,720,871.79	\$1,652,283.94
UPLIFT	\$1,019,756.86	\$450,731.10	\$271,496.97	\$311,045.61	\$569,774.17	\$292,541.57	\$218,667.49
RESIDUALS	(\$3,125,050.38)	(\$1,624,392.92)	(\$1,104,356.93)	(\$1,135,591.85)	(\$908,944.20)	(\$736,046.62)	(\$648,706.65)
ANCILLARY SERVICES	\$2,478,388.85	\$1,380,021.38	\$1,669,805.48	\$1,657,428.03	\$1,533,742.30	\$1,461,518.19	\$1,435,178.89
TCC	\$7,729,859.18	\$6,775,302.27	\$1,221,021.66	\$1,826,036.01	\$1,588,331.98	\$794,186.91	\$573,474.13
	15	16	17	18	19	20	21
ENERGY	\$26,199,357.72	\$26,924,308.77	\$25,394,588.43	\$30,109,765.49	\$36,219,490.23	\$35,786,952.09	\$31,857,522.76
TRANSMISSION SERVICE	\$2,051,459.76	\$1,884,693.77	\$1,738,197.01	\$2,082,627.76	\$2,130,441.47	\$2,088,253.44	\$1,903,504.43
UPLIFT	\$254,738.89	\$191,038.14	\$193,568.87	\$361,056.68	\$288,283.91	\$462,142.82	\$261,946.61
RESIDUALS	(\$849,318.21)	(\$933,944.95)	(\$752,440.62)	(\$828,049.85)	(\$970,350.85)	(\$1,050,210.12)	(\$976,427.35)
ANCILLARY SERVICES	\$1,558,821.03	\$1,542,665.45	\$1,492,889.45	\$1,561,128.94	\$1,659,424.13	\$1,712,282.83	\$1,583,437.57
TCC	\$666,071.90	\$474,372.20	\$549,181.74	\$1,177,402.82	\$850,303.58	\$760,348.61	\$441,424.49
	22	23	24	25	26	27	28
ENERGY	\$33,239,199.55	\$36,619,964.15	\$42,046,903.29	\$44,305,880.13	\$40,512,146.37	\$32,051,409.65	\$30,120,874.97
TRANSMISSION SERVICE	\$2,240,920.20	\$2,592,102.43	\$2,557,386.35	\$3,271,155.85	\$3,271,627.85	\$2,484,039.84	\$1,904,857.05
UPLIFT	\$281,444.09	\$630,900.43	\$372,030.13	\$465,605.40	\$425,115.78	\$434,656.40	\$424,680.17
RESIDUALS	(\$1,048,634.12)	(\$1,297,165.95)	(\$1,421,094.52)	(\$1,214,207.86)	\$1,708,429.05	(\$1,000,758.48)	(\$893,655.70)
ANCILLARY SERVICES	\$1,599,453.80	\$1,659,161.18	\$1,739,304.02	\$1,757,516.18	\$1,579,413.16	\$1,481,341.22	\$1,499,108.25
TCC	\$1,540,843.26	\$2,365,684.86	\$1,447,796.27	\$2,813,769.37	\$3,250,388.74	\$1,687,054.84	\$994,320.71
	29	30	31				
ENERGY	\$47,648,907.45	\$50,426,482.46	\$37,406,596.75				
TRANSMISSION SERVICE	\$2,684,263.53	\$3,574,805.64	\$4,194,660.33				
UPLIFT	\$218,922.36	\$350,208.54	\$495,886.05				
RESIDUALS	(\$1,972,545.02)	(\$1,462,431.59)	(\$1,169,336.12)				
ANCILLARY SERVICES	\$1,723,896.89	\$1,750,990.99	\$1,588,332.62				
TCC	\$2,260,604.14	\$3,703,690.06	\$4,627,549.88				



SETTLEMENTS REPORT
August 2022 Settlement Adjustment
January 9, 2023

4-Month Settlement Adjustment – Market Costs Analysis

	MONDAY	TUESDAY	WEDNESDAY	THURSDAY	FRIDAY	SATURDAY	SUNDAY
	1	2	3	4	5	6	7
ENERGY	\$34,754,864.01	\$45,079,889.72	\$40,972,795.35	\$58,877,383.24	\$51,784,767.66	\$45,330,450.63	\$50,148,745.53
TRANSMISSION SERVICE	\$2,383,930.67	\$4,374,288.31	\$2,775,315.98	\$4,414,991.90	\$4,432,286.60	\$2,734,561.93	\$3,269,652.14
UPLIFT	\$204,681.89	\$215,905.74	\$226,604.40	\$351,328.32	\$242,924.26	\$285,591.53	\$224,796.53
RESIDUALS	(\$810,674.97)	(\$1,190,998.21)	(\$1,183,674.01)	(\$1,806,038.08)	(\$762,233.08)	(\$1,137,546.73)	(\$1,193,336.35)
ANCILLARY SERVICES	\$1,823,604.67	\$1,738,187.91	\$1,668,663.13	\$2,539,903.40	\$1,867,179.17	\$1,640,106.94	\$1,772,536.65
TCC	\$959,200.67	\$5,510,451.40	\$1,766,428.93	\$4,371,970.33	\$4,299,356.18	\$1,656,379.20	\$2,934,441.56
	8	9	10	11	12	13	14
ENERGY	\$64,851,813.00	\$63,316,110.43	\$41,725,752.40	\$36,973,814.39	\$26,731,165.88	\$20,555,095.96	\$20,680,229.67
TRANSMISSION SERVICE	\$6,098,597.12	\$5,727,116.33	\$2,608,789.17	\$2,550,722.19	\$2,416,836.66	\$1,718,040.33	\$1,650,060.02
UPLIFT	\$1,013,794.51	\$450,651.48	\$271,487.41	\$311,045.59	\$569,557.48	\$292,541.24	\$218,667.54
RESIDUALS	(\$3,121,668.85)	(\$1,626,785.20)	(\$1,111,491.09)	(\$1,138,289.74)	(\$910,373.84)	(\$739,588.74)	(\$649,871.51)
ANCILLARY SERVICES	\$2,148,007.32	\$1,128,053.35	\$1,674,779.97	\$1,651,379.54	\$1,542,087.19	\$1,470,222.20	\$1,435,055.56
TCC	\$8,057,207.83	\$7,025,221.88	\$1,214,896.42	\$1,830,722.50	\$1,578,553.55	\$783,427.56	\$571,961.41
	15	16	17	18	19	20	21
ENERGY	\$26,169,623.65	\$26,886,548.71	\$25,362,364.89	\$30,088,761.18	\$36,208,690.58	\$35,740,726.93	\$31,828,195.40
TRANSMISSION SERVICE	\$2,049,145.10	\$1,882,804.36	\$1,736,174.65	\$2,080,778.47	\$2,128,906.67	\$2,086,067.96	\$1,901,622.55
UPLIFT	\$254,917.80	\$190,788.72	\$193,568.54	\$360,797.40	\$288,323.39	\$462,143.95	\$261,946.36
RESIDUALS	(\$852,348.62)	(\$935,509.56)	(\$751,763.67)	(\$830,560.51)	(\$971,234.64)	(\$1,051,692.03)	(\$978,550.32)
ANCILLARY SERVICES	\$1,554,044.87	\$1,555,497.62	\$1,514,022.28	\$1,579,149.21	\$1,677,931.68	\$1,718,512.35	\$1,576,405.10
TCC	\$669,142.13	\$460,064.27	\$526,505.80	\$1,157,979.92	\$830,665.37	\$752,386.93	\$447,015.32
	22	23	24	25	26	27	28
ENERGY	\$33,205,854.12	\$36,595,673.87	\$42,029,284.14	\$44,284,376.00	\$40,459,966.39	\$32,031,683.60	\$30,103,639.34
TRANSMISSION SERVICE	\$2,239,043.37	\$2,590,389.54	\$2,555,536.91	\$3,269,135.56	\$3,268,782.47	\$2,482,111.06	\$1,902,888.17
UPLIFT	\$281,445.03	\$630,864.12	\$439,692.46	\$467,213.91	\$425,116.05	\$437,117.07	\$443,491.85
RESIDUALS	(\$1,054,715.89)	(\$1,299,140.76)	(\$1,420,220.59)	(\$1,218,015.29)	\$1,705,508.26	(\$1,006,898.78)	(\$899,658.91)
ANCILLARY SERVICES	\$1,618,466.80	\$1,688,404.48	\$1,747,904.92	\$1,711,156.63	\$1,638,248.09	\$1,563,485.75	\$1,532,115.09
TCC	\$1,520,389.86	\$2,335,142.17	\$1,437,599.86	\$2,858,620.88	\$3,189,437.27	\$1,603,466.23	\$959,850.04
	29	30	31				
ENERGY	\$47,589,383.34	\$50,381,296.87	\$37,319,956.64				
TRANSMISSION SERVICE	\$2,680,359.38	\$3,571,902.11	\$4,191,095.24				
UPLIFT	\$218,137.50	\$349,957.12	\$495,886.97				
RESIDUALS	(\$1,964,694.50)	(\$1,467,555.82)	(\$1,202,248.05)				
ANCILLARY SERVICES	\$1,773,497.13	\$1,752,402.62	\$1,701,675.86				
TCC	\$2,208,103.45	\$3,700,079.82	\$4,511,297.46				

