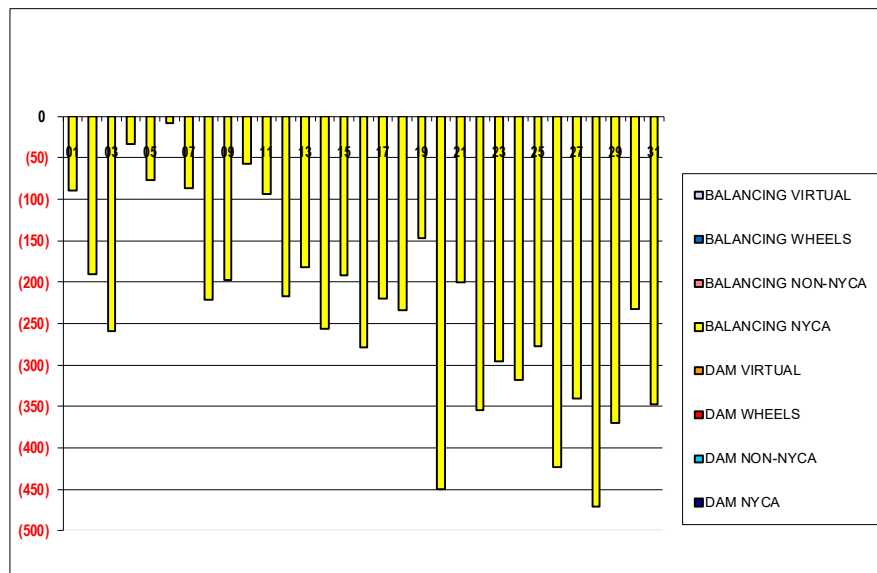


SETTLEMENTS REPORT  
 January 2023 Settlement Adjustment  
 June 7, 2023

**Settlement Adjustment – Market Supply Delta Analysis**

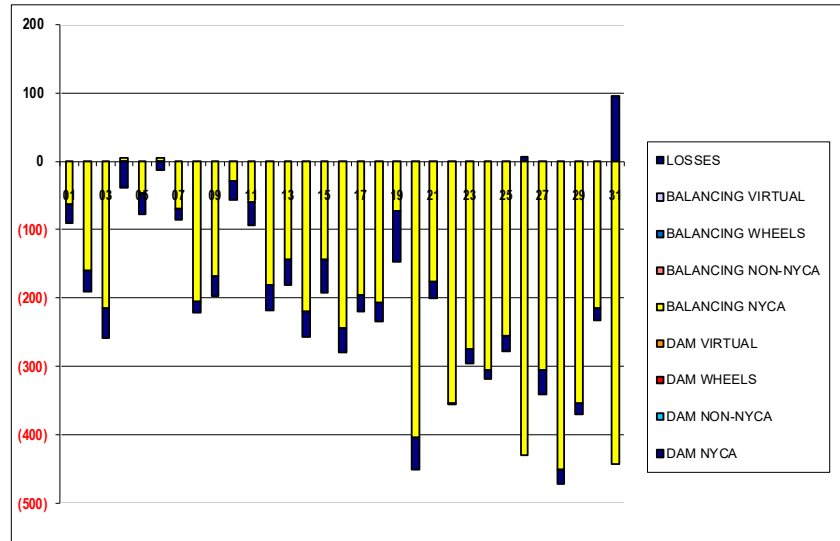
	MONDAY	TUESDAY	WEDNESDAY	THURSDAY	FRIDAY	SATURDAY	SUNDAY
DAM NYCA							1
DAM NON-NYCA							0
DAM WHEELS							0
DAM VIRTUAL							0
BALANCING NYCA							(90)
BALANCING NON-NYCA							0
BALANCING WHEELS							0
BALANCING VIRTUAL							0
	<b>2</b>	<b>3</b>	<b>4</b>	<b>5</b>	<b>6</b>	<b>7</b>	<b>8</b>
DAM NYCA	0	0	0	0	0	0	0
DAM NON-NYCA	0	0	0	0	0	0	0
DAM WHEELS	0	0	0	0	0	0	0
DAM VIRTUAL	0	0	0	0	0	0	0
BALANCING NYCA	(190)	(258)	(34)	(77)	(8)	(86)	(221)
BALANCING NON-NYCA	0	0	0	0	0	0	0
BALANCING WHEELS	0	0	0	0	0	0	0
BALANCING VIRTUAL	0	0	0	0	0	0	0
	<b>9</b>	<b>10</b>	<b>11</b>	<b>12</b>	<b>13</b>	<b>14</b>	<b>15</b>
DAM NYCA	0	0	0	0	0	0	0
DAM NON-NYCA	0	0	0	0	0	0	0
DAM WHEELS	0	0	0	0	0	0	0
DAM VIRTUAL	0	0	0	0	0	0	0
BALANCING NYCA	(197)	(57)	(94)	(218)	(181)	(257)	(191)
BALANCING NON-NYCA	0	0	0	0	0	0	0
BALANCING WHEELS	0	0	0	0	0	0	0
BALANCING VIRTUAL	0	0	0	0	0	0	0
	<b>16</b>	<b>17</b>	<b>18</b>	<b>19</b>	<b>20</b>	<b>21</b>	<b>22</b>
DAM NYCA	0	0	0	0	0	0	0
DAM NON-NYCA	0	0	0	0	0	0	0
DAM WHEELS	0	0	0	0	0	0	0
DAM VIRTUAL	0	0	0	0	0	0	0
BALANCING NYCA	(279)	(220)	(233)	(146)	(450)	(200)	(355)
BALANCING NON-NYCA	0	0	0	0	0	0	0
BALANCING WHEELS	0	0	0	0	0	0	0
BALANCING VIRTUAL	0	0	0	0	0	0	0
	<b>23</b>	<b>24</b>	<b>25</b>	<b>26</b>	<b>27</b>	<b>28</b>	<b>29</b>
DAM NYCA	0	0	0	0	0	0	0
DAM NON-NYCA	0	0	0	0	0	0	0
DAM WHEELS	0	0	0	0	0	0	0
DAM VIRTUAL	0	0	0	0	0	0	0
BALANCING NYCA	(296)	(319)	(277)	(423)	(340)	(471)	(370)
BALANCING NON-NYCA	0	0	0	0	0	0	0
BALANCING WHEELS	0	0	0	0	0	0	0
BALANCING VIRTUAL	0	0	0	0	0	0	0
	<b>30</b>	<b>31</b>					
DAM NYCA	0	0					
DAM NON-NYCA	0	0					
DAM WHEELS	0	0					
DAM VIRTUAL	0	0					
BALANCING NYCA	(232)	(347)					
BALANCING NON-NYCA	0	0					
BALANCING WHEELS	0	0					
BALANCING VIRTUAL	0	0					



SETTLEMENTS REPORT  
January 2023 Settlement Adjustment  
June 7, 2023

**Settlement Adjustment – Market Withdrawals Delta Analysis**

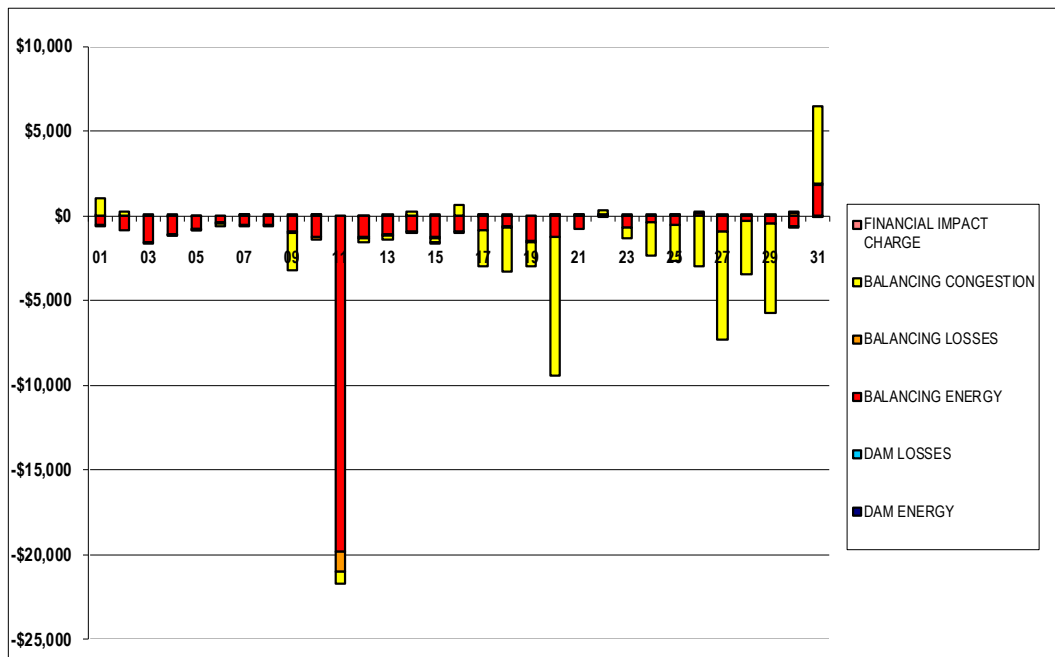
	MONDAY	TUESDAY	WEDNESDAY	THURSDAY	FRIDAY	SATURDAY	SUNDAY
							1
DAM NYCA							0
DAM NON-NYCA							0
DAM WHEELS							0
DAM VIRTUAL							0
BALANCING NYCA							(63)
BALANCING NON-NYCA							0
BALANCING WHEELS							0
BALANCING VIRTUAL							0
UFE/LOSSES							(27)
	2	3	4	5	6	7	8
DAM NYCA	0	0	0	0	0	0	0
DAM NON-NYCA	0	0	0	0	0	0	0
DAM WHEELS	0	0	0	0	0	0	0
DAM VIRTUAL	0	0	0	0	0	0	0
BALANCING NYCA	(159)	(215)	6	(47)	4	(70)	(205)
BALANCING NON-NYCA	0	0	0	0	0	0	0
BALANCING WHEELS	0	0	0	0	0	0	0
BALANCING VIRTUAL	0	0	0	0	0	0	0
UFE/LOSSES	(31)	(43)	(39)	(30)	(12)	(16)	(15)
	9	10	11	12	13	14	15
DAM NYCA	0	0	0	0	0	0	0
DAM NON-NYCA	0	0	0	0	0	0	0
DAM WHEELS	0	0	0	0	0	0	0
DAM VIRTUAL	0	0	0	0	0	0	0
BALANCING NYCA	(168)	(29)	(59)	(180)	(144)	(220)	(143)
BALANCING NON-NYCA	0	0	0	0	0	0	0
BALANCING WHEELS	0	0	0	0	0	0	0
BALANCING VIRTUAL	0	0	0	0	0	0	0
UFE/LOSSES	(29)	(28)	(35)	(37)	(38)	(37)	(48)
	16	17	18	19	20	21	22
DAM NYCA	0	0	0	0	0	0	0
DAM NON-NYCA	0	0	0	0	0	0	0
DAM WHEELS	0	0	0	0	0	0	0
DAM VIRTUAL	0	0	0	0	0	0	0
BALANCING NYCA	(244)	(195)	(207)	(72)	(403)	(176)	(353)
BALANCING NON-NYCA	0	0	0	0	0	0	0
BALANCING WHEELS	0	0	0	0	0	0	0
BALANCING VIRTUAL	0	0	0	0	0	0	0
UFE/LOSSES	(35)	(25)	(27)	(74)	(47)	(24)	(2)
	23	24	25	26	27	28	29
DAM NYCA	0	0	0	0	0	0	0
DAM NON-NYCA	0	0	0	0	0	0	0
DAM WHEELS	0	0	0	0	0	0	0
DAM VIRTUAL	0	0	0	0	0	0	0
BALANCING NYCA	(274)	(304)	(254)	(430)	(305)	(451)	(353)
BALANCING NON-NYCA	0	0	0	0	0	0	0
BALANCING WHEELS	0	0	0	0	0	0	0
BALANCING VIRTUAL	0	0	0	0	0	0	0
UFE/LOSSES	(22)	(14)	(23)	7	(35)	(20)	(17)
	30	31					
DAM NYCA	0	0					
DAM NON-NYCA	0	0					
DAM WHEELS	0	0					
DAM VIRTUAL	0	0					
BALANCING NYCA	(214)	(442)					
BALANCING NON-NYCA	0	0					
BALANCING WHEELS	0	0					
BALANCING VIRTUAL	0	0					
UFE/LOSSES	(18)	95					



SETTLEMENTS REPORT  
January 2023 Settlement Adjustment  
June 7, 2023

**Settlement Adjustment – Market Residuals Delta Analysis**

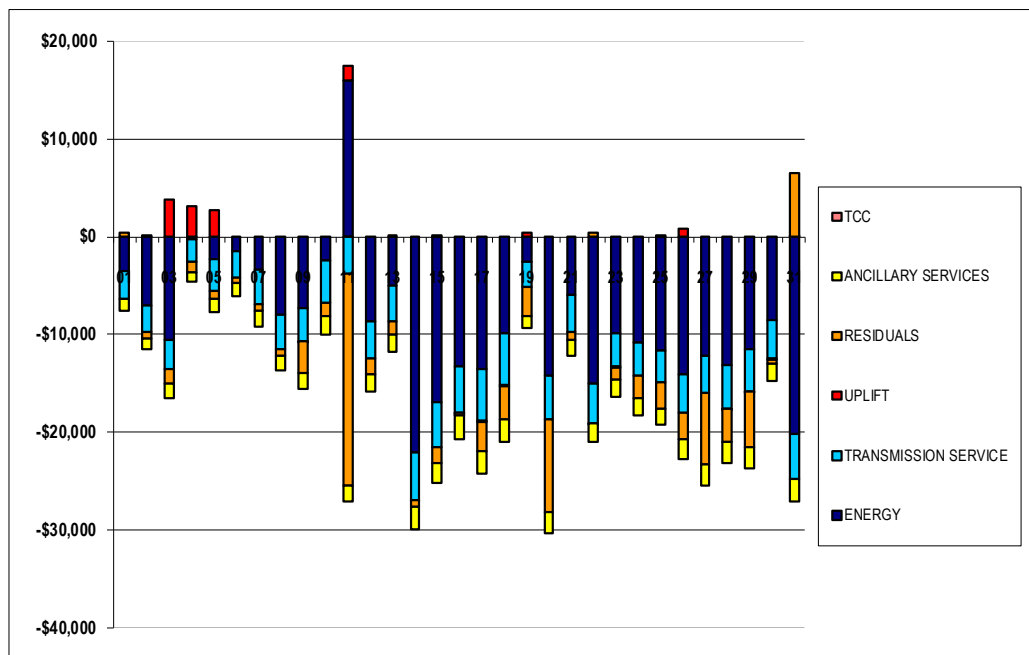
	MONDAY	TUESDAY	WEDNESDAY	THURSDAY	FRIDAY	SATURDAY	SUNDAY
							1
DAM ENERGY							\$0.00
DAM LOSSES							\$0.01
BALANCING ENERGY							(\$545.26)
BALANCING LOSSES							(\$69.04)
BALANCING CONGESTION							\$1,038.47
FINANCIAL IMPACT CHARGE							\$0.00
	2	3	4	5	6	7	8
DAM ENERGY	\$0.00	\$0.00	\$0.01	(\$0.01)	\$0.00	\$0.01	\$0.00
DAM LOSSES	\$0.00	\$0.00	(\$0.01)	\$0.00	\$0.00	\$0.01	\$0.00
BALANCING ENERGY	(\$879.00)	(\$1,538.52)	(\$1,063.03)	(\$754.99)	(\$344.86)	(\$535.99)	(\$539.03)
BALANCING LOSSES	\$41.74	\$72.12	(\$12.40)	(\$36.04)	(\$100.95)	(\$115.66)	(\$39.51)
BALANCING CONGESTION	\$184.49	(\$29.45)	(\$9.97)	(\$26.51)	(\$164.38)	\$89.29	\$1.83
FINANCIAL IMPACT CHARGE	\$0.00	\$0.00	\$0.00	\$0.00	\$0.00	\$0.00	\$0.00
	9	10	11	12	13	14	15
DAM ENERGY	\$0.00	\$0.00	\$0.00	\$0.00	\$0.01	(\$0.01)	\$0.00
DAM LOSSES	\$0.01	\$0.01	\$0.00	(\$0.01)	\$0.00	\$0.01	\$0.01
BALANCING ENERGY	(\$904.48)	(\$1,279.40)	(\$19,800.73)	(\$1,223.35)	(\$1,084.66)	(\$895.00)	(\$1,243.85)
BALANCING LOSSES	(\$86.35)	(\$131.13)	(\$1,225.13)	(\$93.55)	(\$114.29)	(\$46.06)	(\$89.41)
BALANCING CONGESTION	(\$2,239.02)	\$35.98	(\$676.04)	(\$205.45)	(\$183.59)	\$243.38	(\$260.44)
FINANCIAL IMPACT CHARGE	\$0.00	\$0.00	\$0.00	\$0.00	\$0.00	\$0.00	(\$0.02)
	16	17	18	19	20	21	22
DAM ENERGY	\$0.00	\$0.00	(\$0.01)	\$0.00	\$0.00	\$0.00	\$0.01
DAM LOSSES	\$0.00	(\$0.01)	\$0.00	\$0.00	\$0.01	\$0.00	(\$0.01)
BALANCING ENERGY	(\$947.60)	(\$823.62)	(\$638.05)	(\$1,491.81)	(\$1,222.91)	(\$755.02)	\$30.71
BALANCING LOSSES	(\$72.43)	\$30.62	(\$31.53)	(\$45.28)	\$110.33	\$15.06	\$53.35
BALANCING CONGESTION	\$618.36	(\$2,173.36)	(\$2,628.58)	(\$1,407.95)	(\$8,234.41)	\$10.89	\$263.77
FINANCIAL IMPACT CHARGE	\$0.00	\$0.02	\$0.13	\$0.00	\$0.00	\$0.00	\$0.00
	23	24	25	26	27	28	29
DAM ENERGY	\$0.00	\$0.00	\$0.01	\$0.00	\$0.00	\$0.00	\$0.00
DAM LOSSES	(\$0.01)	\$0.00	\$0.00	\$0.01	(\$0.01)	\$0.00	\$0.00
BALANCING ENERGY	(\$706.95)	(\$406.02)	(\$530.44)	\$154.57	(\$965.71)	(\$320.68)	(\$471.96)
BALANCING LOSSES	\$19.26	\$36.06	\$37.53	\$109.90	\$9.07	\$85.98	\$107.47
BALANCING CONGESTION	(\$612.14)	(\$1,938.38)	(\$2,123.84)	(\$3,014.83)	(\$6,344.69)	(\$3,145.27)	(\$5,250.95)
FINANCIAL IMPACT CHARGE	\$0.00	\$0.00	\$0.00	\$0.00	\$0.00	\$0.00	\$0.00
	30	31					
DAM ENERGY	\$0.00	(\$0.01)					
DAM LOSSES	\$0.00	(\$0.01)					
BALANCING ENERGY	(\$596.95)	\$1,786.13					
BALANCING LOSSES	\$167.44	\$106.48					
BALANCING CONGESTION	(\$0.47)	\$4,554.42					
FINANCIAL IMPACT CHARGE	\$0.02	\$0.00					



**SETTLEMENTS REPORT**  
**January 2023 Settlement Adjustment**  
**June 7, 2023**

**Settlement Adjustment – Market Costs Delta Analysis**

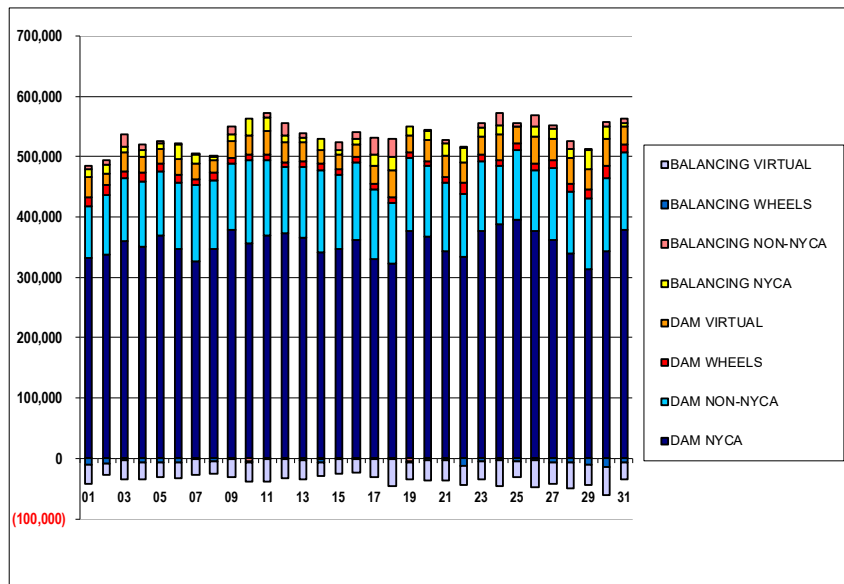
	MONDAY	TUESDAY	WEDNESDAY	THURSDAY	FRIDAY	SATURDAY	SUNDAY
							1
ENERGY							(\$3,545.09)
TRANSMISSION SERVICE							(\$2,834.29)
UPLIFT							\$0.01
RESIDUALS							\$424.18
ANCILLARY SERVICES							(\$1,225.22)
TCC							\$0.00
	2	3	4	5	6	7	8
ENERGY	(\$7,061.89)	(\$10,530.42)	(\$317.79)	(\$2,337.12)	(\$1,538.32)	(\$3,350.21)	(\$8,005.18)
TRANSMISSION SERVICE	(\$2,683.43)	(\$2,994.85)	(\$2,223.35)	(\$3,157.67)	(\$2,619.09)	(\$3,588.92)	(\$3,537.28)
UPLIFT	\$0.13	\$3,733.06	\$3,169.16	\$2,732.09	\$0.01	\$0.00	\$0.01
RESIDUALS	(\$652.77)	(\$1,495.85)	(\$1,085.40)	(\$817.55)	(\$610.19)	(\$562.34)	(\$576.71)
ANCILLARY SERVICES	(\$1,142.58)	(\$1,420.43)	(\$1,019.45)	(\$1,363.70)	(\$1,349.19)	(\$1,679.80)	(\$1,593.13)
TCC	\$0.00	\$0.00	\$0.00	\$0.00	\$0.00	\$0.00	\$0.00
	9	10	11	12	13	14	15
ENERGY	(\$7,267.64)	(\$2,371.75)	\$15,919.58	(\$8,596.35)	(\$5,003.94)	(\$21,970.30)	(\$16,929.85)
TRANSMISSION SERVICE	(\$3,423.25)	(\$4,369.09)	(\$3,717.84)	(\$3,901.91)	(\$3,651.39)	(\$4,938.54)	(\$4,533.10)
UPLIFT	(\$0.01)	\$0.00	\$1,495.73	\$0.00	\$8.91	(\$16.89)	\$84.22
RESIDUALS	(\$3,229.84)	(\$1,374.54)	(\$21,701.90)	(\$1,522.36)	(\$1,382.53)	(\$697.68)	(\$1,593.71)
ANCILLARY SERVICES	(\$1,592.18)	(\$1,911.43)	(\$1,629.72)	(\$1,831.37)	(\$1,733.31)	(\$2,249.02)	(\$2,018.73)
TCC	\$0.00	\$0.00	\$0.00	\$0.00	\$0.00	\$0.00	\$0.00
	16	17	18	19	20	21	22
ENERGY	(\$13,265.95)	(\$13,479.31)	(\$9,913.04)	(\$2,548.82)	(\$14,243.07)	(\$6,010.43)	(\$15,046.57)
TRANSMISSION SERVICE	(\$4,644.10)	(\$5,284.65)	(\$5,282.97)	(\$2,592.31)	(\$4,466.83)	(\$3,748.31)	(\$4,073.20)
UPLIFT	(\$0.03)	(\$162.85)	(\$115.90)	\$361.51	\$0.01	\$0.01	(\$2.48)
RESIDUALS	(\$401.67)	(\$2,966.35)	(\$3,298.04)	(\$2,945.04)	(\$9,346.98)	(\$729.07)	\$347.83
ANCILLARY SERVICES	(\$2,304.86)	(\$2,356.19)	(\$2,357.16)	(\$1,188.29)	(\$2,236.84)	(\$1,710.78)	(\$1,874.13)
TCC	\$0.00	\$0.00	\$0.00	\$0.00	\$0.00	\$0.00	\$0.00
	23	24	25	26	27	28	29
ENERGY	(\$9,909.39)	(\$10,832.89)	(\$11,626.39)	(\$14,108.56)	(\$12,199.88)	(\$13,065.39)	(\$11,529.54)
TRANSMISSION SERVICE	(\$3,371.85)	(\$3,318.43)	(\$3,267.49)	(\$3,855.43)	(\$3,728.40)	(\$4,472.57)	(\$4,227.13)
UPLIFT	(\$59.10)	\$0.00	\$3.35	\$860.34	(\$0.01)	(\$0.52)	(\$76.84)
RESIDUALS	(\$1,299.84)	(\$2,308.34)	(\$2,616.74)	(\$2,750.35)	(\$7,301.34)	(\$3,379.97)	(\$5,615.44)
ANCILLARY SERVICES	(\$1,774.00)	(\$1,720.23)	(\$1,633.17)	(\$1,984.19)	(\$2,192.94)	(\$2,153.17)	(\$2,170.10)
TCC	\$0.00	\$0.00	\$0.00	\$0.00	\$0.00	\$0.00	\$0.00
	30	31					
ENERGY	(\$8,580.13)	(\$20,078.99)					
TRANSMISSION SERVICE	(\$3,918.79)	(\$4,628.57)					
UPLIFT	(\$26.09)	\$2.24					
RESIDUALS	(\$429.96)	\$6,447.01					
ANCILLARY SERVICES	(\$1,792.27)	(\$2,284.70)					
TCC	\$0.00	\$0.00					



**SETTLEMENTS REPORT**  
**January 2023 Settlement Adjustment**  
**June 7, 2023**

**Initial Settlement – Market Supply Analysis**

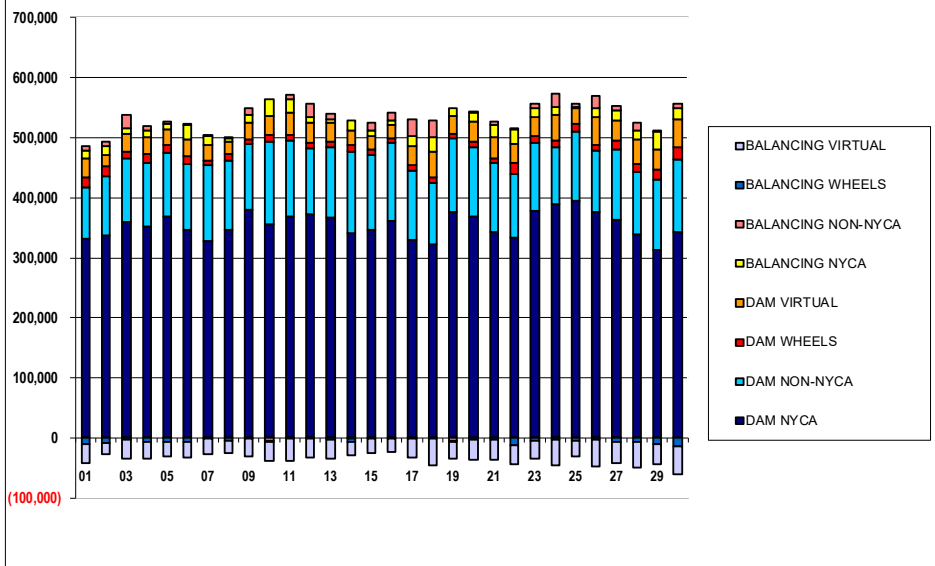
	MONDAY	TUESDAY	WEDNESDAY	THURSDAY	FRIDAY	SATURDAY	SUNDAY
DAM NYCA							1
DAM NON-NYCA							331,809
DAM WHEELS							85,920
DAM VIRTUAL							15,806
BALANCING NYCA							32,369
BALANCING NON-NYCA							13,336
BALANCING WHEELS							6,019
BALANCING VIRTUAL							(10,402)
							(32,369)
	2	3	4	5	6	7	8
DAM NYCA	337,665	360,234	351,427	369,139	347,327	327,232	346,842
DAM NON-NYCA	98,026	104,356	106,665	105,848	108,812	126,526	114,186
DAM WHEELS	17,229	11,798	15,066	12,793	13,427	7,900	11,918
DAM VIRTUAL	18,690	30,601	27,383	25,246	27,029	26,266	20,765
BALANCING NYCA	14,368	9,631	11,279	9,716	23,854	15,470	5,684
BALANCING NON-NYCA	7,806	20,813	8,436	3,406	2,512	938	2,232
BALANCING WHEELS	(9,238)	(3,125)	(7,326)	(6,139)	(6,036)	(690)	(4,468)
BALANCING VIRTUAL	(18,690)	(30,601)	(27,383)	(25,246)	(27,029)	(26,266)	(20,765)
	9	10	11	12	13	14	15
DAM NYCA	379,112	356,191	368,830	372,277	366,614	341,304	346,709
DAM NON-NYCA	109,562	137,708	125,773	110,329	117,009	135,356	123,664
DAM WHEELS	8,648	9,806	9,704	8,161	9,193	11,793	9,461
DAM VIRTUAL	28,461	32,294	37,597	33,201	31,744	23,266	23,651
BALANCING NYCA	11,446	27,597	22,987	11,096	6,929	17,838	7,869
BALANCING NON-NYCA	12,901	(5,490)	6,703	21,345	7,630	(1,376)	13,064
BALANCING WHEELS	(1,587)	(1,256)	(714)	(361)	(2,165)	(4,518)	(1,761)
BALANCING VIRTUAL	(28,461)	(32,294)	(37,597)	(33,201)	(31,744)	(23,266)	(23,651)
	16	17	18	19	20	21	22
DAM NYCA	361,212	330,504	323,209	376,981	367,987	343,141	333,968
DAM NON-NYCA	129,463	114,777	100,391	121,031	115,975	114,495	104,924
DAM WHEELS	9,016	9,479	9,404	8,305	8,555	8,610	18,713
DAM VIRTUAL	20,806	30,480	44,413	29,167	34,400	34,907	32,525
BALANCING NYCA	9,067	18,273	23,102	13,646	15,077	20,740	23,683
BALANCING NON-NYCA	11,627	27,182	29,115	(4,921)	1,068	5,275	2,271
BALANCING WHEELS	(1,741)	(1,311)	(1,334)	(1,105)	(2,035)	(2,151)	(11,513)
BALANCING VIRTUAL	(20,806)	(30,480)	(44,413)	(29,167)	(34,400)	(34,907)	(32,525)
	23	24	25	26	27	28	29
DAM NYCA	377,454	388,532	395,681	377,000	362,450	338,740	313,440
DAM NON-NYCA	114,337	96,012	115,185	101,363	118,284	104,242	116,540
DAM WHEELS	11,297	10,033	11,648	10,068	13,521	12,944	15,965
DAM VIRTUAL	31,079	42,904	26,871	45,060	35,051	41,279	34,084
BALANCING NYCA	14,447	13,783	977	16,670	16,168	15,663	31,141
BALANCING NON-NYCA	7,655	21,483	5,913	19,410	6,994	13,007	745
BALANCING WHEELS	(4,097)	(2,511)	(4,448)	(3,281)	(6,321)	(7,493)	(10,468)
BALANCING VIRTUAL	(31,079)	(42,904)	(26,871)	(45,060)	(35,051)	(41,279)	(34,084)
	30	31					
DAM NYCA	343,261	379,577					
DAM NON-NYCA	121,214	128,399					
DAM WHEELS	20,379	13,192					
DAM VIRTUAL	45,361	29,376					
BALANCING NYCA	19,304	4,397					
BALANCING NON-NYCA	7,640	7,480					
BALANCING WHEELS	(14,835)	(5,977)					
BALANCING VIRTUAL	(45,361)	(29,376)					



SETTLEMENTS REPORT  
January 2023 Settlement Adjustment  
June 7, 2023

**4-Month Settlement Adjustment – Market Supply Analysis**

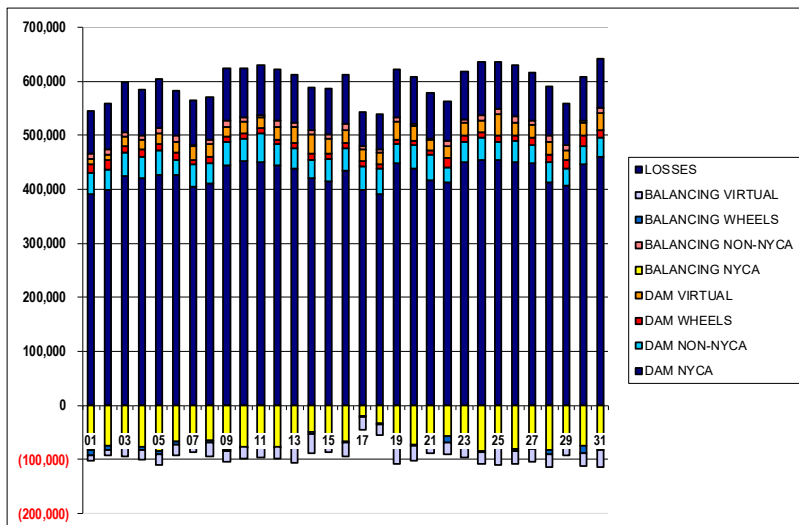
	MONDAY	TUESDAY	WEDNESDAY	THURSDAY	FRIDAY	SATURDAY	SUNDAY
DAM NYCA							1
DAM NON-NYCA							331,809
DAM WHEELS							85,920
DAM VIRTUAL							15,606
BALANCING NYCA							32,369
BALANCING NON-NYCA							13,246
BALANCING WHEELS							6,019
BALANCING VIRTUAL							(10,402)
							(32,369)
	2	3	4	5	6	7	8
DAM NYCA	337,565	360,234	351,427	369,139	347,327	327,232	346,842
DAM NON-NYCA	98,026	104,356	106,665	105,848	108,812	126,526	114,186
DAM WHEELS	17,229	11,798	15,066	12,793	13,427	7,900	11,918
DAM VIRTUAL	18,690	30,601	27,383	25,246	27,029	26,266	20,765
BALANCING NYCA	14,178	9,373	11,245	9,639	23,846	15,384	5,463
BALANCING NON-NYCA	7,806	20,813	8,436	3,406	2,512	938	2,232
BALANCING WHEELS	(9,238)	(3,125)	(7,326)	(6,139)	(6,036)	(690)	(4,468)
BALANCING VIRTUAL	(18,690)	(30,601)	(27,383)	(25,246)	(27,029)	(26,266)	(20,765)
	9	10	11	12	13	14	15
DAM NYCA	379,112	356,191	368,830	372,277	366,614	341,304	346,709
DAM NON-NYCA	109,562	137,708	125,773	110,329	117,009	135,356	123,664
DAM WHEELS	8,648	9,806	9,704	8,161	9,193	11,793	9,461
DAM VIRTUAL	28,461	32,294	37,597	33,201	31,744	23,266	23,651
BALANCING NYCA	11,249	27,540	22,893	10,879	6,747	17,581	7,677
BALANCING NON-NYCA	12,901	(5,490)	6,703	21,345	7,630	(1,376)	13,064
BALANCING WHEELS	(1,587)	(1,256)	(714)	(361)	(2,165)	(4,518)	(1,761)
BALANCING VIRTUAL	(28,461)	(32,294)	(37,597)	(33,201)	(31,744)	(23,266)	(23,651)
	16	17	18	19	20	21	22
DAM NYCA	361,212	330,504	323,209	376,981	367,987	343,141	333,968
DAM NON-NYCA	129,463	114,777	100,391	121,031	115,975	114,495	104,924
DAM WHEELS	9,016	9,479	9,404	8,305	8,555	8,610	18,713
DAM VIRTUAL	20,806	30,480	44,413	29,167	34,400	34,907	32,525
BALANCING NYCA	8,787	18,053	22,869	13,499	14,627	20,540	23,329
BALANCING NON-NYCA	11,627	27,182	29,115	(4,921)	1,068	5,275	2,271
BALANCING WHEELS	(1,741)	(1,311)	(1,334)	(1,105)	(2,035)	(2,151)	(11,513)
BALANCING VIRTUAL	(20,806)	(30,480)	(44,413)	(29,167)	(34,400)	(34,907)	(32,525)
	23	24	25	26	27	28	29
DAM NYCA	377,454	388,532	395,681	377,000	362,450	338,740	313,440
DAM NON-NYCA	114,337	96,012	115,185	101,363	118,284	104,242	116,540
DAM WHEELS	11,297	10,033	11,648	10,068	13,521	12,944	15,965
DAM VIRTUAL	31,079	42,904	26,871	45,060	35,051	41,279	34,084
BALANCING NYCA	14,151	13,464	700	16,248	15,828	15,193	30,771
BALANCING NON-NYCA	7,655	21,483	5,913	19,410	6,994	13,007	745
BALANCING WHEELS	(4,097)	(2,511)	(4,448)	(3,281)	(6,321)	(7,493)	(10,468)
BALANCING VIRTUAL	(31,079)	(42,904)	(26,871)	(45,060)	(35,051)	(41,279)	(34,084)
	30	31					
DAM NYCA	343,261	379,577					
DAM NON-NYCA	121,214	128,399					
DAM WHEELS	20,379	13,192					
DAM VIRTUAL	45,361	29,376					
BALANCING NYCA	19,072	4,049					
BALANCING NON-NYCA	7,640	7,480					
BALANCING WHEELS	(14,835)	(5,977)					
BALANCING VIRTUAL	(45,361)	(29,376)					



**SETTLEMENTS REPORT**  
**January 2023 Settlement Adjustment**  
**June 7, 2023**

**Initial Settlement – Market Withdrawals Analysis**

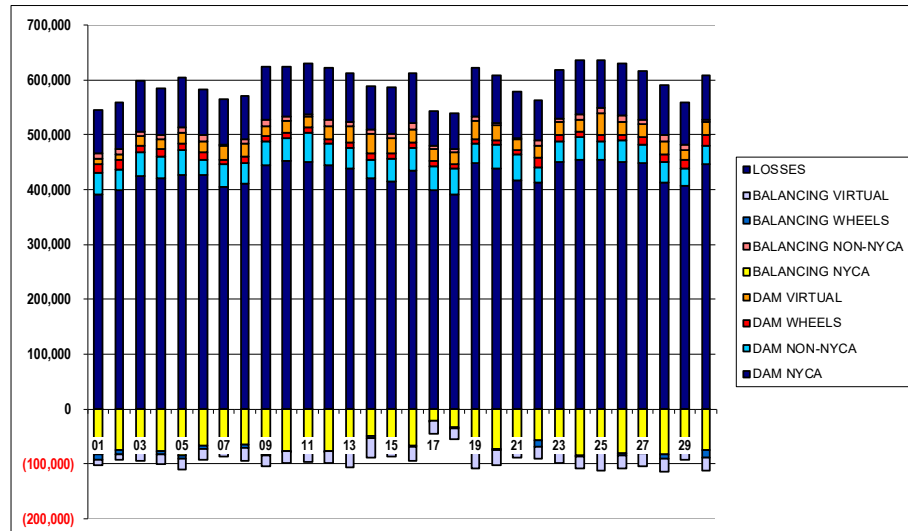
	MONDAY	TUESDAY	WEDNESDAY	THURSDAY	FRIDAY	SATURDAY	SUNDAY
DAM NYCA							1
DAM NON-NYCA							391,893
DAM WHEELS							15,606
DAM VIRTUAL							10,293
BALANCING NYCA							(82,104)
BALANCING NON-NYCA							9,940
BALANCING WHEELS							(10,402)
BALANCING VIRTUAL							(10,293)
UFELOSSES							78,215
	2	3	4	5	6	7	8
DAM NYCA	399,731	424,329	420,185	426,705	426,103	405,167	411,387
DAM NON-NYCA	36,723	43,944	38,880	44,418	27,891	41,760	36,687
DAM WHEELS	17,229	11,798	15,066	12,793	13,427	7,900	11,918
DAM VIRTUAL	9,335	17,358	16,533	19,862	19,368	24,014	24,566
BALANCING NYCA	(73,647)	(73,685)	(75,650)	(83,689)	(66,918)	(62,053)	(65,032)
BALANCING NON-NYCA	11,204	8,537	8,123	9,600	12,302	2,796	6,520
BALANCING WHEELS	(9,238)	(3,125)	(7,326)	(6,139)	(6,036)	(690)	(4,468)
BALANCING VIRTUAL	(9,335)	(17,358)	(16,533)	(19,862)	(19,368)	(24,014)	(24,566)
UFELOSSES	83,754	91,910	86,269	91,075	83,128	82,495	79,382
	9	10	11	12	13	14	15
DAM NYCA	444,972	452,018	450,217	443,783	438,102	421,451	415,511
DAM NON-NYCA	42,995	41,995	52,920	40,309	38,426	33,050	40,642
DAM WHEELS	8,648	9,806	9,704	8,161	9,193	11,793	9,461
DAM VIRTUAL	19,434	21,945	19,329	22,097	28,812	35,454	28,117
BALANCING NYCA	(83,135)	(75,823)	(76,320)	(76,185)	(75,578)	(48,039)	(57,121)
BALANCING NON-NYCA	10,202	6,764	4,228	13,061	9,277	8,125	6,974
BALANCING WHEELS	(1,587)	(1,256)	(714)	(361)	(2,165)	(4,518)	(1,761)
BALANCING VIRTUAL	(19,434)	(21,945)	(19,329)	(22,097)	(28,812)	(35,454)	(28,117)
UFELOSSES	97,987	91,051	93,249	94,079	87,954	78,535	85,299
	16	17	18	19	20	21	22
DAM NYCA	434,004	398,404	390,805	448,241	438,905	416,743	413,228
DAM NON-NYCA	41,923	43,801	46,863	35,394	42,071	46,516	26,810
DAM WHEELS	9,016	9,479	9,404	8,305	8,555	8,610	18,713
DAM VIRTUAL	24,980	22,964	20,814	32,598	27,376	19,460	21,724
BALANCING NYCA	(66,655)	(20,145)	(33,166)	(74,466)	(72,810)	(66,641)	(57,313)
BALANCING NON-NYCA	10,983	5,417	5,717	8,185	3,972	1,323	8,571
BALANCING WHEELS	(1,741)	(1,311)	(1,334)	(1,105)	(2,035)	(2,151)	(11,513)
BALANCING VIRTUAL	(24,980)	(22,964)	(20,814)	(32,598)	(27,376)	(19,460)	(21,724)
UFELOSSES	91,113	63,258	65,598	89,383	87,968	85,711	73,550
	23	24	25	26	27	28	29
DAM NYCA	450,693	454,541	453,718	449,525	448,695	411,960	405,897
DAM NON-NYCA	37,347	41,292	33,436	39,724	32,491	38,381	31,570
DAM WHEELS	11,297	10,033	11,648	10,068	13,521	12,944	15,965
DAM VIRTUAL	24,108	20,750	39,433	24,009	24,454	24,321	18,271
BALANCING NYCA	(68,688)	(84,286)	(66,806)	(80,553)	(73,823)	(81,758)	(63,002)
BALANCING NON-NYCA	6,278	10,827	9,718	11,271	8,797	12,776	9,604
BALANCING WHEELS	(4,097)	(2,511)	(4,448)	(3,281)	(6,321)	(7,493)	(10,468)
BALANCING VIRTUAL	(24,108)	(20,750)	(39,433)	(24,009)	(24,454)	(24,321)	(18,271)
UFELOSSES	88,262	97,436	87,689	94,475	87,738	90,293	77,797
	30	31					
DAM NYCA	445,557	459,524					
DAM NON-NYCA	33,484	35,873					
DAM WHEELS	20,379	13,192					
DAM VIRTUAL	22,818	32,201					
BALANCING NYCA	(73,684)	(75,545)					
BALANCING NON-NYCA	4,799	9,409					
BALANCING WHEELS	(14,835)	(5,977)					
BALANCING VIRTUAL	(22,818)	(32,201)					
UFELOSSES	81,263	90,592					



**SETTLEMENTS REPORT**  
**January 2023 Settlement Adjustment**  
**June 7, 2023**

**4-Month Settlement Adjustment – Market Withdrawals Analysis**

	MONDAY	TUESDAY	WEDNESDAY	THURSDAY	FRIDAY	SATURDAY	SUNDAY
DAM NYCA							1
DAM NON-NYCA							391,893
DAM WHEELS							39,140
DAM VIRTUAL							15,606
BALANCING NYCA							10,293
BALANCING NON-NYCA							(82,168)
BALANCING WHEELS							9,940
BALANCING VIRTUAL							(10,402)
UFE/LOSSES							(10,293)
							78,189
	2	3	4	5	6	7	8
DAM NYCA	399,731	424,329	420,185	426,705	426,103	405,167	411,387
DAM NON-NYCA	36,723	43,944	38,880	44,418	27,891	41,760	36,687
DAM WHEELS	17,229	11,798	15,066	12,793	13,427	7,900	11,918
DAM VIRTUAL	9,335	17,358	16,533	19,862	19,368	24,014	24,566
BALANCING NYCA	(73,806)	(73,900)	(75,644)	(83,736)	(66,914)	(62,123)	(65,237)
BALANCING NON-NYCA	11,204	8,537	8,123	9,600	12,302	2,796	6,520
BALANCING WHEELS	(9,238)	(3,125)	(7,326)	(6,139)	(6,036)	(690)	(4,468)
BALANCING VIRTUAL	(9,335)	(17,358)	(16,533)	(19,862)	(19,368)	(24,014)	(24,566)
UFE/LOSSES	83,723	91,866	86,230	91,045	83,116	82,479	78,366
	9	10	11	12	13	14	15
DAM NYCA	444,972	452,018	450,217	443,783	438,102	421,451	415,511
DAM NON-NYCA	42,995	41,995	52,920	40,309	38,426	33,050	40,642
DAM WHEELS	8,648	9,806	9,704	8,161	9,193	11,793	9,461
DAM VIRTUAL	19,434	21,945	19,329	22,097	28,812	35,454	28,117
BALANCING NYCA	(83,303)	(75,852)	(76,380)	(76,365)	(75,721)	(48,259)	(57,265)
BALANCING NON-NYCA	10,202	6,764	4,228	13,061	9,277	8,125	6,974
BALANCING WHEELS	(1,587)	(1,256)	(714)	(361)	(2,155)	(4,518)	(1,761)
BALANCING VIRTUAL	(19,434)	(21,945)	(19,329)	(22,097)	(28,812)	(35,454)	(28,117)
UFE/LOSSES	97,958	91,024	93,215	94,042	87,916	78,498	85,251
	16	17	18	19	20	21	22
DAM NYCA	434,004	398,404	390,805	448,241	438,905	416,743	413,228
DAM NON-NYCA	41,923	43,801	46,863	35,394	42,071	46,516	26,810
DAM WHEELS	9,016	9,479	9,404	8,305	8,555	8,610	18,713
DAM VIRTUAL	24,980	22,964	20,814	32,598	27,376	19,460	21,724
BALANCING NYCA	(66,899)	(20,339)	(33,373)	(74,538)	(73,213)	(66,818)	(57,666)
BALANCING NON-NYCA	10,983	5,417	5,717	8,185	3,972	1,323	8,571
BALANCING WHEELS	(1,741)	(1,311)	(1,334)	(1,105)	(2,035)	(2,151)	(11,513)
BALANCING VIRTUAL	(24,980)	(22,964)	(20,814)	(32,598)	(27,376)	(19,460)	(21,724)
UFE/LOSSES	91,078	63,233	65,572	89,309	87,921	85,687	73,548
	23	24	25	26	27	28	29
DAM NYCA	450,693	454,541	453,718	449,525	448,695	411,960	405,897
DAM NON-NYCA	37,347	41,292	33,436	39,724	32,491	38,381	31,570
DAM WHEELS	11,297	10,033	11,648	10,068	13,521	12,944	15,965
DAM VIRTUAL	24,108	20,750	39,433	24,009	24,454	24,321	18,271
BALANCING NYCA	(68,962)	(84,590)	(67,060)	(80,982)	(74,129)	(82,208)	(63,354)
BALANCING NON-NYCA	6,278	10,827	9,718	11,271	8,797	12,776	9,604
BALANCING WHEELS	(4,097)	(2,511)	(4,448)	(3,281)	(6,321)	(7,493)	(10,468)
BALANCING VIRTUAL	(24,108)	(20,750)	(39,433)	(24,009)	(24,454)	(24,321)	(18,271)
UFE/LOSSES	88,240	97,422	87,667	94,482	87,702	90,273	77,779
	30	31					
DAM NYCA	445,557	459,524					
DAM NON-NYCA	33,484	35,873					
DAM WHEELS	20,379	13,192					
DAM VIRTUAL	22,818	32,201					
BALANCING NYCA	(73,898)	(75,987)					
BALANCING NON-NYCA	4,795	9,409					
BALANCING WHEELS	(14,835)	(5,977)					
BALANCING VIRTUAL	(22,818)	(32,201)					
UFE/LOSSES	81,246	90,686					

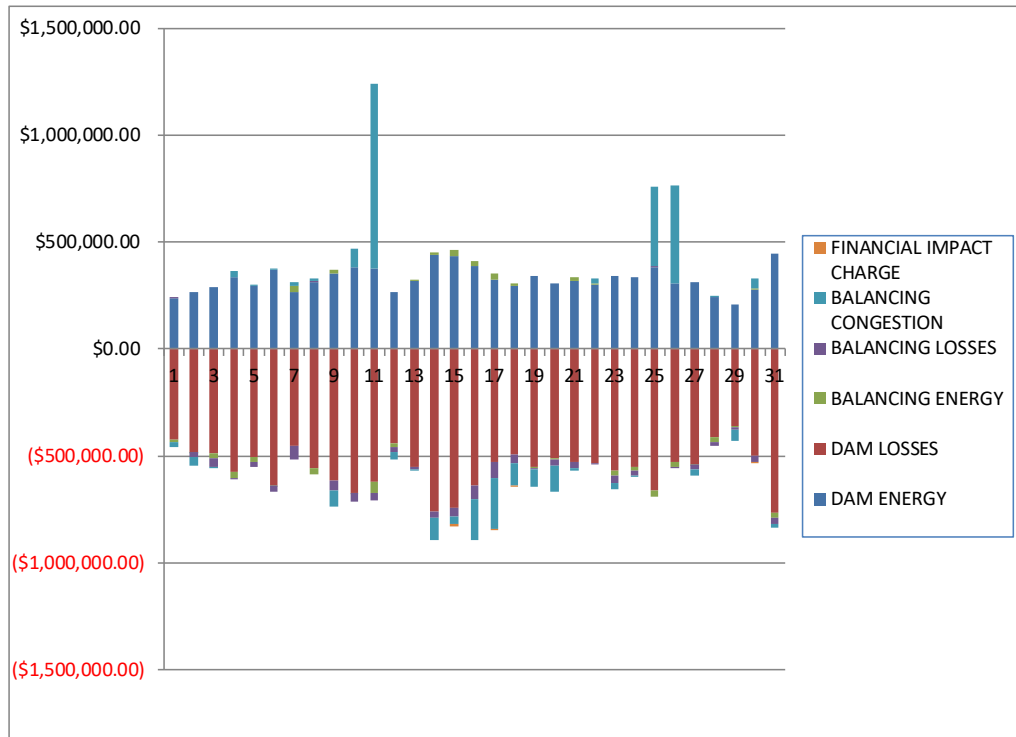




**SETTLEMENTS REPORT**  
**January 2023 Settlement Adjustment**  
**June 7, 2023**

**Initial Settlement – Market Residuals Analysis**

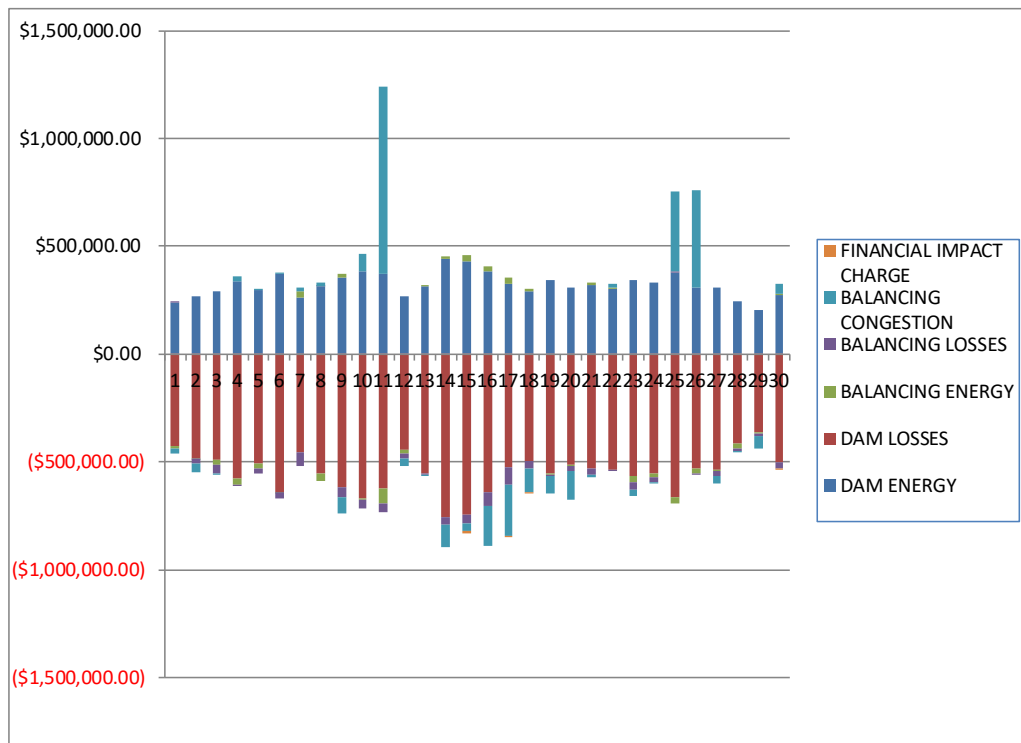
	MONDAY	TUESDAY	WEDNESDAY	THURSDAY	FRIDAY	SATURDAY	SUNDAY
							1
DAM ENERGY							\$238,304.76
DAM LOSSES							(\$423,654.25)
BALANCING ENERGY							(\$14,690.75)
BALANCING LOSSES							\$3,005.63
BALANCING CONGESTION							(\$20,204.08)
FINANCIAL IMPACT CHARGE							\$0.00
	2	3	4	5	6	7	8
DAM ENERGY	\$267,570.04	\$289,030.72	\$334,968.19	\$295,659.10	\$371,144.04	\$264,661.12	\$314,662.70
DAM LOSSES	(\$484,636.72)	(\$488,712.22)	(\$575,367.92)	(\$504,677.14)	(\$637,356.56)	(\$452,662.53)	(\$555,731.54)
BALANCING ENERGY	(\$81.20)	(\$23,055.49)	(\$30,055.74)	(\$24,248.25)	(\$950.68)	\$29,051.71	(\$29,083.58)
BALANCING LOSSES	(\$20,140.89)	(\$37,740.89)	(\$697.99)	(\$22,076.56)	(\$30,107.56)	(\$65,813.97)	\$748.62
BALANCING CONGESTION	(\$44,144.59)	(\$2,345.36)	\$28,218.63	\$3,151.94	\$1,645.49	\$16,658.80	\$15,725.83
FINANCIAL IMPACT CHARGE	\$0.00	\$0.00	\$0.00	\$0.00	\$0.00	\$0.00	\$0.00
	9	10	11	12	13	14	15
DAM ENERGY	\$353,212.93	\$382,469.00	\$375,124.24	\$266,334.88	\$316,147.81	\$441,002.05	\$430,799.27
DAM LOSSES	(\$618,220.90)	(\$670,926.29)	(\$623,921.64)	(\$444,267.64)	(\$553,224.47)	(\$757,809.25)	(\$744,995.71)
BALANCING ENERGY	\$18,338.54	(\$1,127.30)	(\$47,879.15)	(\$15,728.40)	\$2,351.24	\$11,792.33	\$31,243.63
BALANCING LOSSES	(\$44,895.37)	(\$42,251.91)	(\$37,403.56)	(\$20,023.06)	(\$7,525.49)	(\$31,374.79)	(\$41,530.49)
BALANCING CONGESTION	(\$74,169.17)	\$84,614.94	\$863,153.44	(\$35,347.06)	(\$19.88)	(\$106,768.83)	(\$30,813.89)
FINANCIAL IMPACT CHARGE	\$0.00	\$0.00	\$0.00	\$0.00	\$0.00	\$0.00	(\$10,646.80)
	16	17	18	19	20	21	22
DAM ENERGY	\$386,035.56	\$325,605.00	\$292,796.92	\$341,329.76	\$306,757.24	\$317,757.58	\$302,469.44
DAM LOSSES	(\$641,722.93)	(\$527,063.27)	(\$493,013.08)	(\$551,499.79)	(\$510,926.17)	(\$530,024.31)	(\$533,327.65)
BALANCING ENERGY	\$23,202.26	\$27,494.14	\$11,311.99	(\$5,438.61)	(\$7,133.28)	\$17,618.99	\$5,332.19
BALANCING LOSSES	(\$62,635.67)	(\$77,490.49)	(\$39,474.15)	(\$5,111.03)	(\$25,306.20)	(\$26,936.30)	(\$530.88)
BALANCING CONGESTION	(\$187,641.32)	(\$236,888.21)	(\$106,243.23)	(\$83,423.34)	(\$122,810.16)	(\$13,630.65)	\$19,281.87
FINANCIAL IMPACT CHARGE	\$0.00	(\$116.27)	(\$321.29)	\$0.00	\$0.00	\$0.00	\$0.00
	23	24	25	26	27	28	29
DAM ENERGY	\$342,210.32	\$334,640.14	\$379,488.55	\$306,324.84	\$309,507.61	\$243,221.21	\$205,896.81
DAM LOSSES	(\$567,518.76)	(\$554,231.43)	(\$662,284.28)	(\$528,101.19)	(\$537,591.01)	(\$415,484.53)	(\$359,444.30)
BALANCING ENERGY	(\$23,769.09)	(\$15,633.72)	(\$29,286.50)	(\$23,725.52)	(\$5,512.96)	(\$22,145.71)	(\$5,660.08)
BALANCING LOSSES	(\$35,810.06)	(\$25,378.85)	\$6,404.22	(\$1,054.37)	(\$18,726.70)	(\$14,090.75)	(\$12,116.11)
BALANCING CONGESTION	(\$29,049.00)	(\$516.99)	\$369,807.35	\$458,218.92	(\$32,122.65)	\$1,912.02	(\$54,276.06)
FINANCIAL IMPACT CHARGE	\$0.00	\$0.00	\$0.00	\$0.00	\$0.00	\$0.00	\$0.00
	30	31					
DAM ENERGY	\$276,497.60	\$443,422.94					
DAM LOSSES	(\$502,601.79)	(\$765,521.00)					
BALANCING ENERGY	\$3,702.51	(\$22,006.49)					
BALANCING LOSSES	(\$25,050.58)	(\$28,915.15)					
BALANCING CONGESTION	\$48,569.10	(\$19,672.43)					
FINANCIAL IMPACT CHARGE	(\$32.76)	\$0.00					



SETTLEMENTS REPORT  
January 2023 Settlement Adjustment  
June 7, 2023

**4-Month Settlement Adjustment – Market Residuals Analysis**

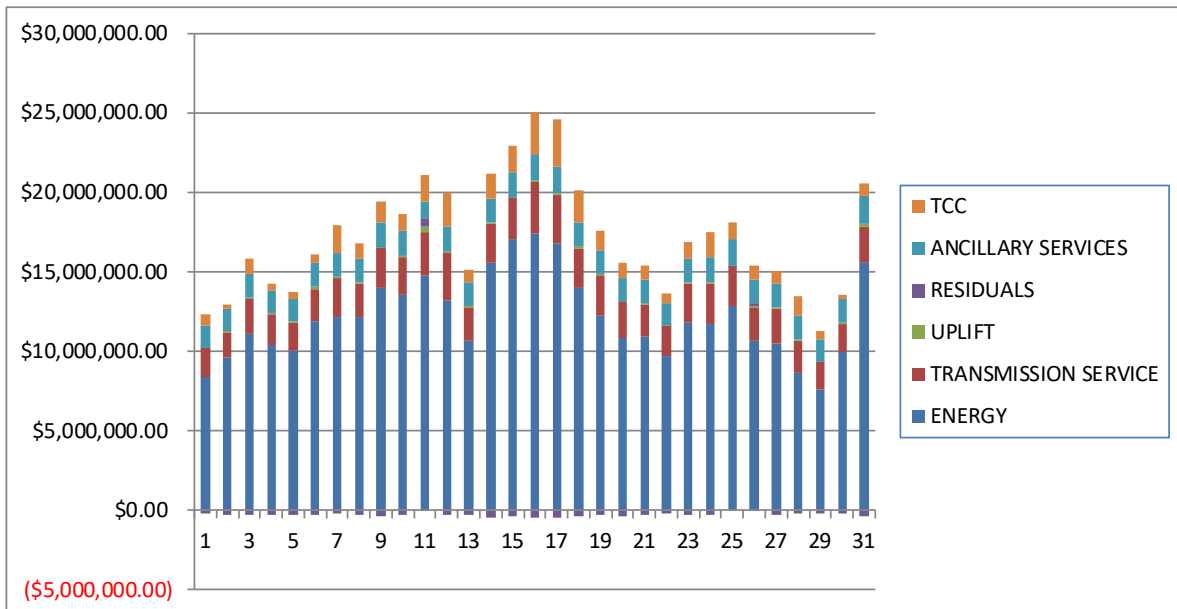
	MONDAY	TUESDAY	WEDNESDAY	THURSDAY	FRIDAY	SATURDAY	SUNDAY
							1
DAM ENERGY							\$238,304.76
DAM LOSSES							(\$423,654.24)
BALANCING ENERGY							(\$15,236.01)
BALANCING LOSSES							\$2,936.59
BALANCING CONGESTION							(\$19,165.61)
FINANCIAL IMPACT CHARGE							\$0.00
	2	3	4	5	6	7	8
DAM ENERGY	\$267,570.04	\$289,030.72	\$334,968.20	\$295,659.09	\$371,144.04	\$264,661.13	\$314,662.70
DAM LOSSES	(\$484,636.72)	(\$488,712.22)	(\$575,367.93)	(\$504,677.14)	(\$637,356.56)	(\$452,662.52)	(\$555,731.54)
BALANCING ENERGY	(\$960.20)	(\$24,594.01)	(\$31,118.77)	(\$25,003.24)	(\$1,295.54)	\$28,515.72	(\$29,622.61)
BALANCING LOSSES	(\$20,099.15)	(\$37,668.77)	(\$710.39)	(\$22,112.60)	(\$30,208.51)	(\$65,929.63)	\$709.11
BALANCING CONGESTION	(\$43,960.10)	(\$2,374.81)	\$28,208.66	\$3,125.43	\$1,481.11	\$16,748.09	\$15,727.66
FINANCIAL IMPACT CHARGE	\$0.00	\$0.00	\$0.00	\$0.00	\$0.00	\$0.00	\$0.00
	9	10	11	12	13	14	15
DAM ENERGY	\$353,212.93	\$382,469.00	\$375,124.24	\$266,334.88	\$316,147.82	\$441,002.04	\$430,799.27
DAM LOSSES	(\$618,220.89)	(\$670,926.28)	(\$623,921.64)	(\$444,267.65)	(\$553,224.47)	(\$757,809.24)	(\$744,995.70)
BALANCING ENERGY	\$17,434.06	(\$2,406.70)	(\$67,679.88)	(\$16,951.75)	\$1,266.58	\$10,897.33	\$29,999.78
BALANCING LOSSES	(\$44,981.72)	(\$42,383.04)	(\$38,628.69)	(\$20,116.61)	(\$7,639.78)	(\$31,420.85)	(\$41,619.90)
BALANCING CONGESTION	(\$76,408.19)	\$84,650.92	\$862,477.40	(\$35,552.51)	(\$203.47)	(\$106,525.45)	(\$31,074.33)
FINANCIAL IMPACT CHARGE	\$0.00	\$0.00	\$0.00	\$0.00	\$0.00	\$0.00	(\$10,646.82)
	16	17	18	19	20	21	22
DAM ENERGY	\$386,035.56	\$325,605.00	\$292,796.91	\$341,329.76	\$306,757.24	\$317,757.58	\$302,469.45
DAM LOSSES	(\$641,722.93)	(\$527,063.28)	(\$493,013.08)	(\$551,499.79)	(\$510,926.16)	(\$530,024.31)	(\$533,327.66)
BALANCING ENERGY	\$22,254.66	\$26,670.52	\$10,673.94	(\$6,930.42)	(\$8,356.19)	\$16,863.97	\$5,362.90
BALANCING LOSSES	(\$62,708.10)	(\$77,459.87)	(\$39,505.68)	(\$5,156.31)	(\$25,195.87)	(\$26,921.24)	(\$477.53)
BALANCING CONGESTION	(\$187,022.96)	(\$239,061.57)	(\$108,871.81)	(\$84,831.29)	(\$131,044.57)	(\$13,619.76)	\$19,545.64
FINANCIAL IMPACT CHARGE	\$0.00	(\$116.25)	(\$321.16)	\$0.00	\$0.00	\$0.00	\$0.00
	23	24	25	26	27	28	29
DAM ENERGY	\$342,210.32	\$334,640.14	\$379,488.56	\$306,324.84	\$309,507.61	\$243,221.21	\$205,896.81
DAM LOSSES	(\$567,518.77)	(\$554,231.43)	(\$662,284.28)	(\$528,101.18)	(\$537,591.02)	(\$415,484.53)	(\$359,444.30)
BALANCING ENERGY	(\$24,476.04)	(\$16,039.74)	(\$29,816.94)	(\$23,570.95)	(\$6,478.67)	(\$22,466.39)	(\$6,132.04)
BALANCING LOSSES	(\$35,790.80)	(\$25,342.79)	\$6,441.75	(\$944.47)	(\$18,717.63)	(\$14,004.77)	(\$12,008.64)
BALANCING CONGESTION	(\$29,661.14)	(\$2,455.37)	\$367,683.51	\$455,204.09	(\$38,467.34)	(\$1,233.25)	(\$59,527.01)
FINANCIAL IMPACT CHARGE	\$0.00	\$0.00	\$0.00	\$0.00	\$0.00	\$0.00	\$0.00
	30	31					
DAM ENERGY	\$276,497.60	\$443,422.93					
DAM LOSSES	(\$502,601.79)	(\$765,521.01)					
BALANCING ENERGY	\$3,105.56	(\$20,220.36)					
BALANCING LOSSES	(\$24,883.14)	(\$28,808.67)					
BALANCING CONGESTION	\$48,568.63	(\$15,118.01)					
FINANCIAL IMPACT CHARGE	(\$32.74)	\$0.00					



**SETTLEMENTS REPORT**  
**January 2023 Settlement Adjustment**  
**June 7, 2023**

**Initial Settlement – Market Costs Analysis**

	MONDAY	TUESDAY	WEDNESDAY	THURSDAY	FRIDAY	SATURDAY	SUNDAY
							<b>1</b>
ENERGY							\$8,420,725.82
TRANSMISSION SERVICE							\$1,803,728.70
UPLIFT							\$1,422.67
RESIDUALS							(\$217,238.69)
ANCILLARY SERVICES							\$1,370,448.53
TCC							\$721,034.14
	<b>2</b>	<b>3</b>	<b>4</b>	<b>5</b>	<b>6</b>	<b>7</b>	<b>8</b>
ENERGY	\$9,612,565.59	\$11,102,046.65	\$10,408,523.50	\$10,040,163.64	\$11,911,160.71	\$12,147,970.66	\$12,149,583.98
TRANSMISSION SERVICE	\$1,602,158.41	\$2,193,972.07	\$1,920,686.12	\$1,779,205.04	\$2,013,143.89	\$2,469,942.73	\$2,125,998.01
UPLIFT	\$21,235.17	\$89,618.51	\$62,747.83	\$43,052.18	\$168,331.05	\$46,494.29	\$27,131.20
RESIDUALS	(\$281,433.36)	(\$262,823.24)	(\$242,934.83)	(\$252,190.91)	(\$295,625.27)	(\$208,104.87)	(\$253,677.97)
ANCILLARY SERVICES	\$1,396,120.93	\$1,443,560.51	\$1,411,776.65	\$1,396,463.15	\$1,458,657.69	\$1,529,339.67	\$1,516,141.65
TCC	\$285,825.42	\$981,015.36	\$485,121.36	\$488,366.43	\$557,457.21	\$1,690,801.84	\$943,656.15
	<b>9</b>	<b>10</b>	<b>11</b>	<b>12</b>	<b>13</b>	<b>14</b>	<b>15</b>
ENERGY	\$14,004,185.34	\$13,573,063.39	\$14,808,862.06	\$13,171,457.79	\$10,663,386.84	\$15,606,112.36	\$17,051,464.24
TRANSMISSION SERVICE	\$2,477,229.34	\$2,352,407.75	\$2,681,532.62	\$3,005,934.86	\$2,118,870.28	\$2,408,712.27	\$2,597,260.11
UPLIFT	\$32,754.69	\$60,033.31	\$346,354.99	\$67,624.87	\$39,356.59	\$61,270.08	\$60,078.84
RESIDUALS	(\$365,733.97)	(\$247,221.56)	\$529,073.33	(\$249,031.28)	(\$242,270.79)	(\$443,158.49)	(\$365,943.99)
ANCILLARY SERVICES	\$1,564,232.71	\$1,575,936.87	\$1,072,765.27	\$1,582,711.71	\$1,491,596.71	\$1,483,456.57	\$1,578,026.46
TCC	\$1,310,328.43	\$1,073,427.82	\$1,605,456.79	\$2,113,723.79	\$775,639.02	\$1,613,029.01	\$1,629,192.75
	<b>16</b>	<b>17</b>	<b>18</b>	<b>19</b>	<b>20</b>	<b>21</b>	<b>22</b>
ENERGY	\$17,382,821.46	\$16,776,632.28	\$13,947,722.55	\$12,261,054.50	\$10,838,597.82	\$10,960,440.60	\$9,662,236.43
TRANSMISSION SERVICE	\$3,261,644.64	\$3,098,659.87	\$2,515,672.02	\$2,530,825.69	\$2,252,588.10	\$2,017,431.22	\$1,936,701.68
UPLIFT	\$61,280.19	\$98,168.39	\$114,358.59	\$39,256.44	\$27,875.06	\$35,360.14	\$36,452.93
RESIDUALS	(\$482,762.10)	(\$488,459.10)	(\$334,942.84)	(\$304,143.01)	(\$359,418.57)	(\$235,214.69)	(\$206,775.03)
ANCILLARY SERVICES	\$1,699,666.28	\$1,599,763.90	\$1,509,870.26	\$1,555,157.69	\$1,507,632.90	\$1,471,279.46	\$1,430,203.67
TCC	\$2,581,949.33	\$2,961,963.95	\$1,985,228.11	\$1,229,045.41	\$947,167.85	\$906,891.10	\$536,545.20
	<b>23</b>	<b>24</b>	<b>25</b>	<b>26</b>	<b>27</b>	<b>28</b>	<b>29</b>
ENERGY	\$11,827,606.83	\$11,729,255.13	\$12,861,229.48	\$10,640,921.23	\$10,465,666.01	\$8,642,168.76	\$7,580,822.62
TRANSMISSION SERVICE	\$2,426,010.29	\$2,534,262.82	\$2,440,199.24	\$2,137,294.17	\$2,193,578.88	\$2,058,391.46	\$1,747,113.43
UPLIFT	\$50,029.11	\$62,987.40	\$40,238.54	\$64,251.06	\$71,213.55	\$54,804.71	\$35,465.93
RESIDUALS	(\$313,936.59)	(\$261,120.85)	\$64,129.34	\$211,662.68	(\$284,445.71)	(\$206,587.76)	(\$225,599.74)
ANCILLARY SERVICES	\$1,542,470.89	\$1,556,932.42	\$1,603,667.81	\$1,494,041.43	\$1,516,773.18	\$1,464,282.56	\$1,405,091.90
TCC	\$1,044,695.94	\$1,590,215.79	\$1,086,900.97	\$860,147.99	\$801,442.20	\$1,271,806.99	\$485,902.58
	<b>30</b>	<b>31</b>					
ENERGY	\$9,958,359.99	\$15,534,449.69					
TRANSMISSION SERVICE	\$1,769,383.42	\$2,317,964.43					
UPLIFT	\$54,933.83	\$140,107.57					
RESIDUALS	(\$198,915.92)	(\$392,692.13)					
ANCILLARY SERVICES	\$1,539,670.69	\$1,742,738.36					
TCC	\$207,010.26	\$815,801.22					



**SETTLEMENTS REPORT**  
**January 2023 Settlement Adjustment**  
**June 7, 2023**

**4-Month Settlement Adjustment – Market Costs Analysis**

	MONDAY	TUESDAY	WEDNESDAY	THURSDAY	FRIDAY	SATURDAY	SUNDAY
							1
ENERGY							\$8,417,180.73
TRANSMISSION SERVICE							\$1,800,894.41
UPLIFT							\$1,422.68
RESIDUALS							(\$216,814.51)
ANCILLARY SERVICES							\$1,369,223.31
TCC							\$721,034.14
	2	3	4	5	6	7	8
ENERGY	\$9,605,503.70	\$11,091,516.23	\$10,408,205.71	\$10,037,826.52	\$11,909,622.39	\$12,144,620.45	\$12,141,578.80
TRANSMISSION SERVICE	\$1,599,474.98	\$2,190,977.22	\$1,918,462.77	\$1,776,047.37	\$2,010,524.80	\$2,466,353.81	\$2,122,460.73
UPLIFT	\$21,235.30	\$93,351.57	\$65,916.99	\$45,784.27	\$168,331.06	\$46,494.29	\$27,131.21
RESIDUALS	(\$282,086.13)	(\$264,319.09)	(\$244,020.23)	(\$253,008.46)	(\$296,235.46)	(\$208,667.21)	(\$254,254.68)
ANCILLARY SERVICES	\$1,394,978.35	\$1,442,140.08	\$1,410,757.20	\$1,395,099.45	\$1,457,308.50	\$1,527,659.87	\$1,514,548.52
TCC	\$285,825.42	\$981,015.36	\$485,121.36	\$488,366.43	\$557,457.21	\$1,690,801.84	\$943,656.15
	9	10	11	12	13	14	15
ENERGY	\$13,996,917.70	\$13,570,691.64	\$14,824,781.64	\$13,162,861.44	\$10,658,382.90	\$15,584,142.06	\$17,034,534.39
TRANSMISSION SERVICE	\$2,473,806.09	\$2,348,038.66	\$2,677,814.78	\$3,002,032.95	\$2,115,218.89	\$2,403,773.73	\$2,592,727.01
UPLIFT	\$32,754.68	\$60,033.31	\$347,850.72	\$67,624.87	\$39,365.50	\$61,253.19	\$60,163.06
RESIDUALS	(\$368,963.81)	(\$248,596.10)	\$507,371.43	(\$250,553.64)	(\$243,653.32)	(\$443,856.17)	(\$367,537.70)
ANCILLARY SERVICES	\$1,562,640.53	\$1,574,025.44	\$1,071,135.55	\$1,580,880.34	\$1,489,863.40	\$1,481,207.55	\$1,576,007.73
TCC	\$1,310,328.43	\$1,073,427.82	\$1,605,456.79	\$2,113,723.79	\$775,639.02	\$1,613,029.01	\$1,629,192.75
	16	17	18	19	20	21	22
ENERGY	\$17,369,555.51	\$16,763,152.97	\$13,937,809.51	\$12,258,505.68	\$10,824,354.75	\$10,954,430.17	\$9,647,189.86
TRANSMISSION SERVICE	\$3,257,000.54	\$3,093,375.22	\$2,510,389.05	\$2,528,233.38	\$2,248,121.27	\$2,013,682.91	\$1,932,628.48
UPLIFT	\$61,280.16	\$98,005.54	\$114,242.69	\$39,617.95	\$27,875.07	\$35,360.15	\$36,450.45
RESIDUALS	(\$483,163.77)	(\$491,425.45)	(\$338,240.88)	(\$307,088.05)	(\$368,765.55)	(\$235,943.76)	(\$206,427.20)
ANCILLARY SERVICES	\$1,697,361.42	\$1,597,407.71	\$1,507,513.10	\$1,553,969.40	\$1,505,396.06	\$1,469,568.68	\$1,428,329.54
TCC	\$2,581,949.33	\$2,961,963.95	\$1,985,228.11	\$1,229,045.41	\$947,167.85	\$906,891.10	\$536,545.20
	23	24	25	26	27	28	29
ENERGY	\$11,817,697.44	\$11,718,422.24	\$12,849,603.09	\$10,626,812.67	\$10,453,466.13	\$8,629,103.37	\$7,569,293.08
TRANSMISSION SERVICE	\$2,422,638.44	\$2,530,944.39	\$2,436,931.75	\$2,133,438.74	\$2,189,850.48	\$2,053,918.89	\$1,742,886.30
UPLIFT	\$49,970.01	\$62,987.40	\$40,241.89	\$65,111.40	\$71,213.54	\$54,804.19	\$35,389.09
RESIDUALS	(\$315,236.43)	(\$263,429.19)	\$61,512.60	\$208,912.33	(\$291,747.05)	(\$209,967.73)	(\$231,215.18)
ANCILLARY SERVICES	\$1,540,696.89	\$1,555,212.19	\$1,602,034.64	\$1,492,057.24	\$1,514,580.24	\$1,462,129.39	\$1,402,921.80
TCC	\$1,044,695.94	\$1,590,215.79	\$1,086,900.97	\$860,147.99	\$801,442.20	\$1,271,806.99	\$485,902.58
	30	31					
ENERGY	\$9,949,779.86	\$15,514,370.70					
TRANSMISSION SERVICE	\$1,765,464.63	\$2,313,335.86					
UPLIFT	\$54,907.74	\$140,109.81					
RESIDUALS	(\$199,345.88)	(\$386,245.12)					
ANCILLARY SERVICES	\$1,537,878.42	\$1,740,453.66					
TCC	\$207,010.26	\$815,801.22					

