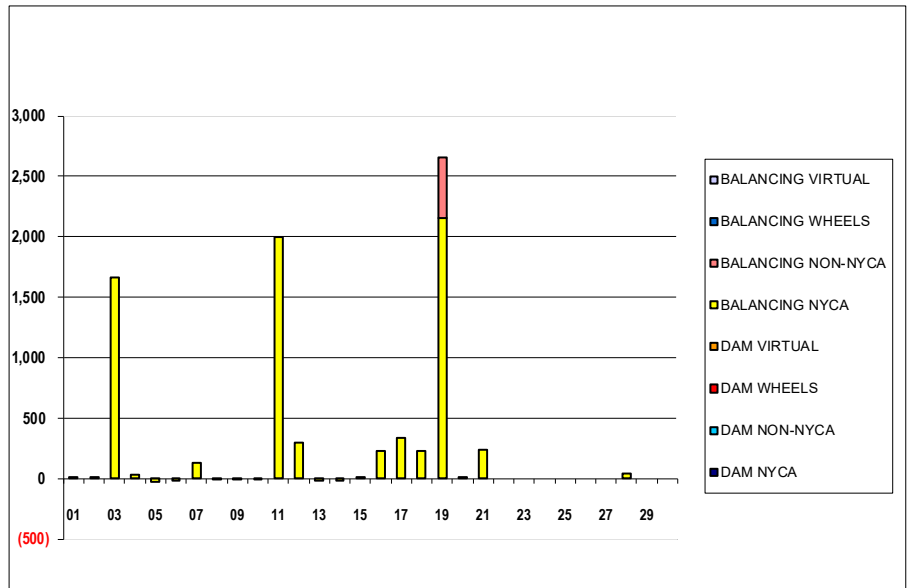


SETTLEMENTS REPORT  
 April 2023 Settlement Adjustment  
 May 5, 2023

**Initial – Market Supply Delta Analysis**

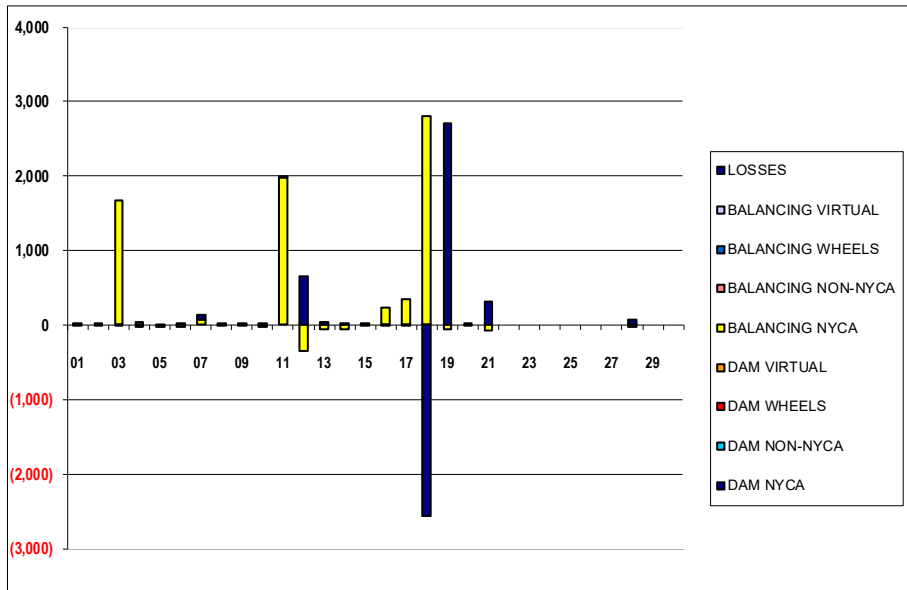
	MONDAY	TUESDAY	WEDNESDAY	THURSDAY	FRIDAY	SATURDAY	SUNDAY
						1	2
DAM NYCA						0	0
DAM NON-NYCA						0	0
DAM WHEELS						0	0
DAM VIRTUAL						0	0
BALANCING NYCA						1	1
BALANCING NON-NYCA						0	0
BALANCING WHEELS						0	0
BALANCING VIRTUAL						0	0
	3	4	5	6	7	8	9
DAM NYCA	0	0	0	0	0	0	0
DAM NON-NYCA	0	0	0	0	0	0	0
DAM WHEELS	0	0	0	0	0	0	0
DAM VIRTUAL	0	0	0	0	0	0	0
BALANCING NYCA	1,665	27	(23)	(18)	129	(0)	(0)
BALANCING NON-NYCA	0	0	0	0	0	0	0
BALANCING WHEELS	0	0	0	0	0	0	0
BALANCING VIRTUAL	0	0	0	0	0	0	0
	10	11	12	13	14	15	16
DAM NYCA	0	0	0	0	0	0	0
DAM NON-NYCA	0	0	0	0	0	0	0
DAM WHEELS	0	0	0	0	0	0	0
DAM VIRTUAL	0	0	0	0	0	0	0
BALANCING NYCA	(1)	1,996	296	(20)	(20)	0	230
BALANCING NON-NYCA	0	0	0	0	0	0	0
BALANCING WHEELS	0	0	0	0	0	0	0
BALANCING VIRTUAL	0	0	0	0	0	0	0
	17	18	19	20	21	22	23
DAM NYCA	0	0	0	0	0	0	0
DAM NON-NYCA	0	0	0	0	0	0	0
DAM WHEELS	0	0	0	0	0	0	0
DAM VIRTUAL	0	0	0	0	0	0	0
BALANCING NYCA	337	230	2,152	2	235	0	0
BALANCING NON-NYCA	0	0	500	0	0	0	0
BALANCING WHEELS	0	0	0	0	0	0	0
BALANCING VIRTUAL	0	0	0	0	0	0	0
	24	25	26	27	28	29	30
DAM NYCA	0	0	0	0	0	0	0
DAM NON-NYCA	0	0	0	0	0	0	0
DAM WHEELS	0	0	0	0	0	0	0
DAM VIRTUAL	0	0	0	0	0	0	0
BALANCING NYCA	0	0	0	0	38	0	0
BALANCING NON-NYCA	0	0	0	0	0	0	0
BALANCING WHEELS	0	0	0	0	0	0	0
BALANCING VIRTUAL	0	0	0	0	0	0	0



SETTLEMENTS REPORT  
 April 2023 Settlement Adjustment  
 May 5, 2023

**Initial – Market Withdrawals Delta Analysis**

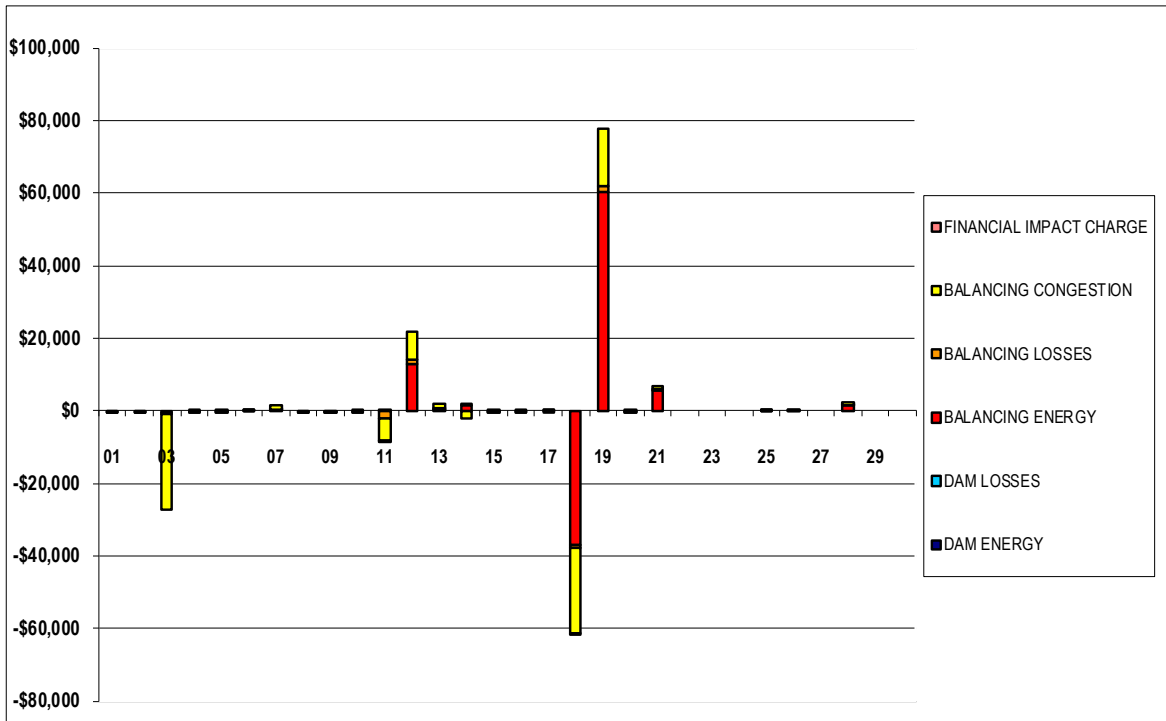
	MONDAY	TUESDAY	WEDNESDAY	THURSDAY	FRIDAY	SATURDAY	SUNDAY
						1	2
DAM NYCA						0	0
DAM NON-NYCA						0	0
DAM WHEELS						0	0
DAM VIRTUAL						0	0
BALANCING NYCA						12	12
BALANCING NON-NYCA						0	0
BALANCING WHEELS						0	0
BALANCING VIRTUAL						0	0
UFE/LOSSES						(11)	(10)
	3	4	5	6	7	8	9
DAM NYCA	0	0	0	0	0	0	0
DAM NON-NYCA	0	0	0	0	0	0	0
DAM WHEELS	0	0	0	0	0	0	0
DAM VIRTUAL	0	0	0	0	0	0	0
BALANCING NYCA	1,678	44	(16)	(19)	80	11	11
BALANCING NON-NYCA	0	0	0	0	0	0	0
BALANCING WHEELS	0	0	0	0	0	0	0
BALANCING VIRTUAL	0	0	0	0	0	0	0
UFE/LOSSES	(13)	(18)	(7)	1	50	(11)	(11)
	10	11	12	13	14	15	16
DAM NYCA	0	0	0	0	0	0	0
DAM NON-NYCA	0	0	0	0	0	0	0
DAM WHEELS	0	0	0	0	0	0	0
DAM VIRTUAL	0	0	0	0	0	0	0
BALANCING NYCA	26	1,984	(354)	(54)	(51)	9	239
BALANCING NON-NYCA	0	0	0	0	0	0	0
BALANCING WHEELS	0	0	0	0	0	0	0
BALANCING VIRTUAL	0	0	0	0	0	0	0
UFE/LOSSES	(27)	11	650	34	30	(9)	(9)
	17	18	19	20	21	22	23
DAM NYCA	0	0	0	0	0	0	0
DAM NON-NYCA	0	0	0	0	0	0	0
DAM WHEELS	0	0	0	0	0	0	0
DAM VIRTUAL	0	0	0	0	0	0	0
BALANCING NYCA	346	2,798	(62)	10	(72)	0	0
BALANCING NON-NYCA	0	0	0	0	0	0	0
BALANCING WHEELS	0	0	0	0	0	0	0
BALANCING VIRTUAL	0	0	0	0	0	0	0
UFE/LOSSES	(9)	(2,568)	2,714	(8)	306	0	0
	24	25	26	27	28	29	30
DAM NYCA	0	0	0	0	0	0	0
DAM NON-NYCA	0	0	0	0	0	0	0
DAM WHEELS	0	0	0	0	0	0	0
DAM VIRTUAL	0	0	0	0	0	0	0
BALANCING NYCA	0	0	0	0	(30)	0	0
BALANCING NON-NYCA	0	0	0	0	0	0	0
BALANCING WHEELS	0	0	0	0	0	0	0
BALANCING VIRTUAL	0	0	0	0	0	0	0
UFE/LOSSES	0	0	0	0	68	0	0



SETTLEMENTS REPORT  
 April 2023 Settlement Adjustment  
 May 5, 2023

**Initial – Market Residuals Delta Analysis**

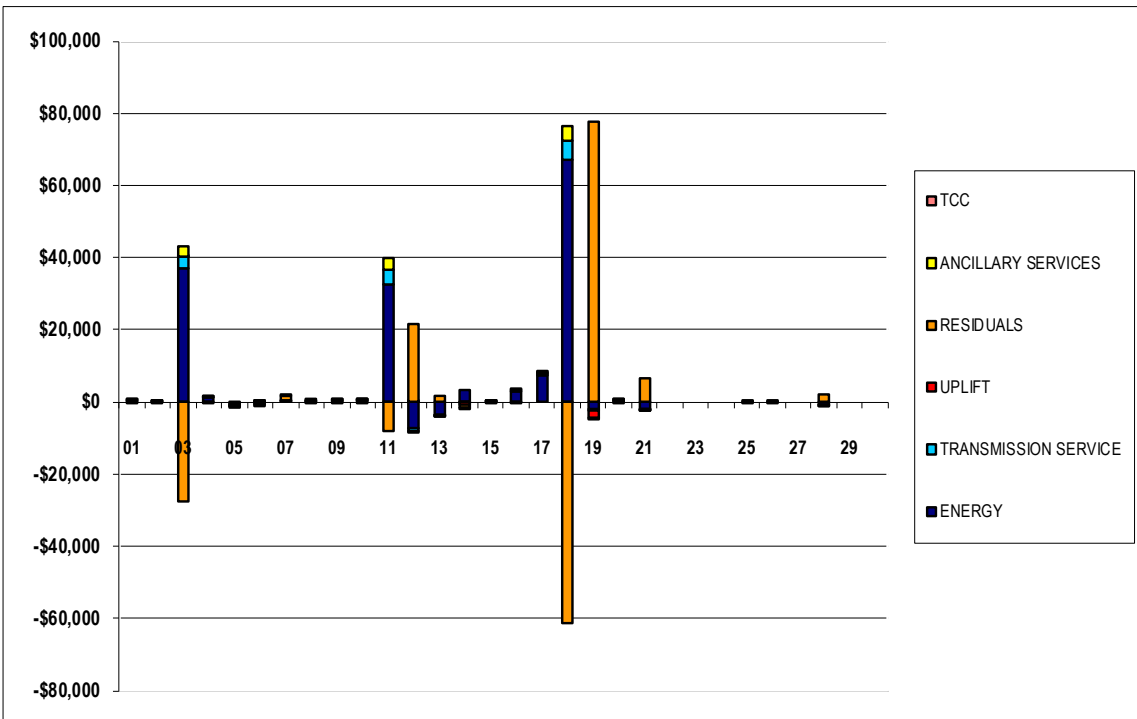
	MONDAY	TUESDAY	WEDNESDAY	THURSDAY	FRIDAY	SATURDAY	SUNDAY
						1	2
DAM ENERGY						\$0.00	(\$0.01)
DAM LOSSES						\$0.01	\$0.01
BALANCING ENERGY						(\$155.69)	(\$167.88)
BALANCING LOSSES						(\$1.45)	(\$0.31)
BALANCING CONGESTION						(\$51.99)	(\$6.90)
FINANCIAL IMPACT CHARGE						\$0.00	\$0.00
	3	4	5	6	7	8	9
DAM ENERGY	\$0.01	\$0.00	\$0.01	(\$0.01)	(\$0.01)	\$0.00	\$0.00
DAM LOSSES	\$0.00	\$0.00	\$0.00	\$0.00	\$0.00	\$0.00	\$0.01
BALANCING ENERGY	(\$602.39)	(\$171.44)	(\$100.19)	\$15.82	\$407.18	(\$220.90)	(\$256.95)
BALANCING LOSSES	(\$302.23)	\$6.86	\$4.62	\$9.34	\$42.50	(\$4.33)	(\$5.18)
BALANCING CONGESTION	(\$26,507.43)	(\$312.17)	(\$382.75)	\$422.81	\$888.18	(\$11.99)	(\$7.12)
FINANCIAL IMPACT CHARGE	\$0.00	\$0.00	\$0.00	\$0.00	\$0.00	\$0.00	\$0.00
	10	11	12	13	14	15	16
DAM ENERGY	\$0.00	\$0.01	\$0.00	\$0.00	(\$0.01)	\$0.00	\$0.00
DAM LOSSES	\$0.00	\$0.01	\$0.00	\$0.00	\$0.00	(\$0.01)	(\$0.01)
BALANCING ENERGY	(\$318.39)	\$49.00	\$12,831.38	\$456.96	\$1,340.11	(\$132.31)	(\$45.60)
BALANCING LOSSES	(\$1.49)	(\$1,987.25)	\$1,161.10	\$29.46	\$236.40	\$1.49	\$9.55
BALANCING CONGESTION	\$0.11	(\$6,057.34)	\$7,666.57	\$1,242.07	(\$2,329.46)	(\$0.11)	(\$4.75)
FINANCIAL IMPACT CHARGE	\$0.00	(\$0.03)	\$0.00	\$0.00	(\$0.01)	\$0.00	\$0.00
	17	18	19	20	21	22	23
DAM ENERGY	\$0.00	\$0.00	(\$0.01)	\$0.01	\$0.00	\$0.00	\$0.00
DAM LOSSES	\$0.00	\$0.00	\$0.00	\$0.01	\$0.00	\$0.00	\$0.00
BALANCING ENERGY	(\$163.71)	(\$36,849.04)	\$60,211.66	(\$200.91)	\$5,685.31	\$0.00	\$0.00
BALANCING LOSSES	\$46.85	(\$950.51)	\$1,703.35	(\$109.63)	\$406.85	\$0.00	\$0.00
BALANCING CONGESTION	\$282.95	(\$23,626.77)	\$15,710.75	\$56.84	\$497.41	\$0.00	\$0.00
FINANCIAL IMPACT CHARGE	\$0.00	(\$0.13)	\$0.00	\$0.00	(\$0.01)	\$0.00	\$0.00
	24	25	26	27	28	29	30
DAM ENERGY	\$0.00	\$0.00	\$0.00	\$0.00	\$0.00	\$0.00	\$0.00
DAM LOSSES	\$0.00	\$0.00	\$0.00	\$0.00	\$0.01	\$0.00	\$0.00
BALANCING ENERGY	\$0.00	\$4.98	\$0.95	\$0.00	\$1,330.43	\$0.00	\$0.00
BALANCING LOSSES	\$0.00	\$0.23	\$0.06	\$0.00	\$33.00	\$0.00	\$0.00
BALANCING CONGESTION	\$0.00	\$0.08	\$0.00	\$0.00	\$864.74	\$0.00	\$0.00
FINANCIAL IMPACT CHARGE	\$0.00	\$0.00	\$0.00	\$0.00	\$0.00	\$0.00	\$0.00



SETTLEMENTS REPORT  
 April 2023 Settlement Adjustment  
 May 5, 2023

**Initial – Market Costs Delta Analysis**

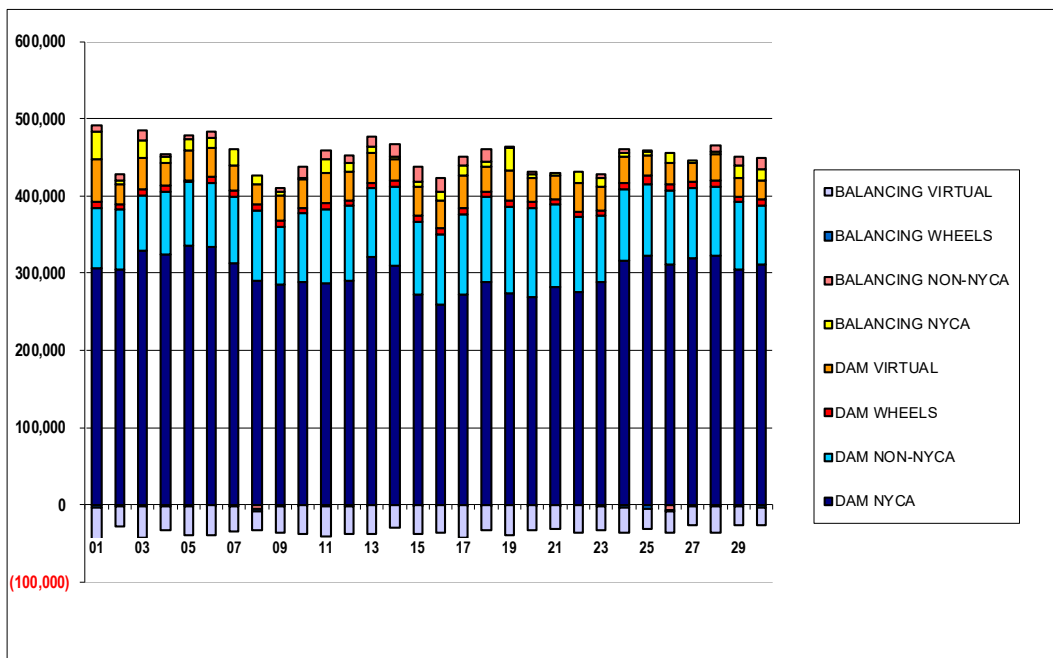
	MONDAY	TUESDAY	WEDNESDAY	THURSDAY	FRIDAY	SATURDAY	SUNDAY
						1	2
ENERGY						\$295.02	\$208.41
TRANSMISSION SERVICE						\$22.67	\$21.90
UPLIFT						\$0.00	\$0.02
RESIDUALS						(\$209.12)	(\$175.09)
ANCILLARY SERVICES						\$19.94	\$18.96
TCC						\$0.00	\$0.00
	3	4	5	6	7	8	9
ENERGY	\$37,209.04	\$1,082.53	(\$555.16)	(\$560.85)	\$239.00	\$234.08	\$278.24
TRANSMISSION SERVICE	\$3,154.07	\$83.44	(\$30.73)	(\$35.96)	\$144.88	\$21.41	\$20.91
UPLIFT	\$0.01	\$0.02	(\$3.76)	\$0.02	(\$0.01)	\$0.00	\$0.00
RESIDUALS	(\$27,412.04)	(\$476.75)	(\$478.31)	\$447.96	\$1,337.85	(\$237.22)	(\$269.24)
ANCILLARY SERVICES	\$2,806.29	\$71.87	(\$27.36)	(\$27.24)	\$147.60	\$18.55	\$18.09
TCC	\$0.00	\$0.00	\$0.00	\$0.00	\$0.00	\$0.00	\$0.00
	10	11	12	13	14	15	16
ENERGY	\$284.12	\$32,740.22	(\$7,315.24)	(\$3,546.26)	\$3,120.56	\$134.54	\$2,691.34
TRANSMISSION SERVICE	\$49.30	\$3,738.39	(\$664.72)	(\$66.09)	(\$59.48)	\$17.45	\$448.83
UPLIFT	\$0.02	\$0.00	\$0.02	(\$127.26)	(\$910.02)	\$0.00	(\$0.01)
RESIDUALS	(\$319.77)	(\$7,995.60)	\$21,659.05	\$1,728.49	(\$752.97)	(\$130.94)	(\$40.81)
ANCILLARY SERVICES	\$37.93	\$3,274.36	(\$367.80)	(\$120.49)	(\$269.33)	\$15.55	\$399.44
TCC	\$0.00	\$0.00	\$0.00	\$0.00	\$0.00	\$0.00	\$0.00
	17	18	19	20	21	22	23
ENERGY	\$7,170.40	\$67,172.51	(\$2,142.19)	\$314.64	(\$1,949.90)	\$0.00	\$0.00
TRANSMISSION SERVICE	\$649.78	\$5,260.60	(\$72.96)	\$19.22	(\$135.09)	\$0.00	\$0.00
UPLIFT	(\$0.01)	\$0.00	(\$2,260.79)	\$0.00	(\$45.84)	\$0.00	\$0.00
RESIDUALS	\$166.09	(\$61,426.45)	\$77,625.75	(\$253.68)	\$6,589.56	\$0.00	\$0.00
ANCILLARY SERVICES	\$578.26	\$3,809.08	(\$98.49)	\$17.49	(\$14.06)	\$0.00	\$0.00
TCC	\$0.00	\$0.00	\$0.00	\$0.00	\$0.00	\$0.00	\$0.00
	24	25	26	27	28	29	30
ENERGY	\$0.00	(\$5.37)	(\$1.00)	\$0.00	(\$712.08)	\$0.00	\$0.00
TRANSMISSION SERVICE	\$0.00	\$0.00	\$0.00	\$0.00	(\$38.97)	\$0.00	\$0.00
UPLIFT	\$0.00	\$0.00	\$0.00	\$0.00	(\$0.02)	\$0.00	\$0.00
RESIDUALS	\$0.00	\$5.29	\$1.01	\$0.00	\$2,228.18	\$0.00	\$0.00
ANCILLARY SERVICES	\$0.00	\$0.00	\$0.00	\$0.00	(\$78.60)	\$0.00	\$0.00
TCC	\$0.00	\$0.00	\$0.00	\$0.00	\$0.00	\$0.00	\$0.00



SETTLEMENTS REPORT  
 April 2023 Settlement Adjustment  
 May 5, 2023

**Weekly Settlement – Market Supply Analysis**

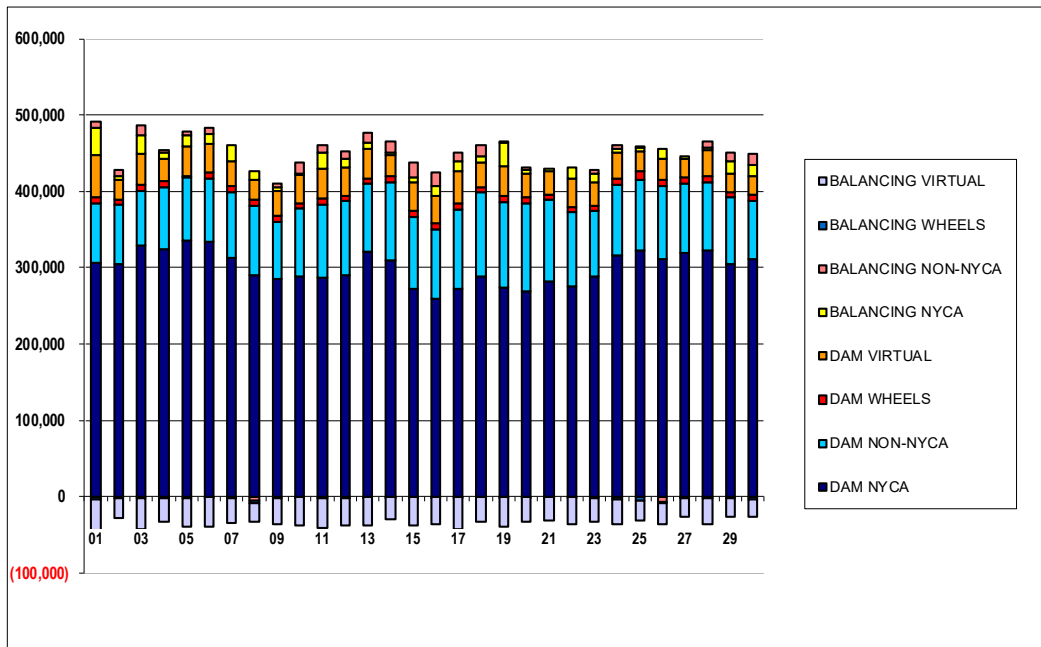
	MONDAY	TUESDAY	WEDNESDAY	THURSDAY	FRIDAY	SATURDAY	SUNDAY
						1	2
DAM NYCA						306,423	305,286
DAM NON-NYCA						78,629	76,719
DAM WHEELS						7,775	7,600
DAM VIRTUAL						55,183	25,644
BALANCING NYCA						35,611	5,005
BALANCING NON-NYCA						8,536	7,716
BALANCING WHEELS						(2,958)	(2,356)
BALANCING VIRTUAL						(55,183)	(25,644)
	3	4	5	6	7	8	9
DAM NYCA	329,081	324,175	335,221	333,861	312,567	290,866	285,397
DAM NON-NYCA	71,744	80,836	82,828	82,979	86,600	90,818	73,902
DAM WHEELS	7,200	7,700	2,431	7,250	7,375	7,725	7,925
DAM VIRTUAL	40,490	30,452	38,406	38,676	32,259	25,060	33,537
BALANCING NYCA	22,779	7,884	15,408	12,820	22,016	12,345	3,832
BALANCING NON-NYCA	13,062	3,686	3,497	7,997	(894)	(5,793)	4,822
BALANCING WHEELS	(2,102)	(2,523)	(1,470)	(986)	(1,086)	(2,193)	(2,393)
BALANCING VIRTUAL	(40,490)	(30,452)	(38,406)	(38,676)	(32,259)	(25,060)	(33,537)
	10	11	12	13	14	15	16
DAM NYCA	288,286	286,539	290,174	321,348	309,796	271,763	259,575
DAM NON-NYCA	88,803	96,194	96,918	88,596	102,765	94,723	91,018
DAM WHEELS	7,475	7,200	7,212	7,325	7,577	7,775	7,775
DAM VIRTUAL	37,319	39,451	36,913	37,751	27,809	37,241	35,777
BALANCING NYCA	1,280	18,726	11,554	9,497	2,187	7,546	11,998
BALANCING NON-NYCA	14,264	10,689	9,039	11,795	16,093	18,586	17,757
BALANCING WHEELS	(940)	(1,332)	(1,606)	(561)	(1,092)	(575)	(887)
BALANCING VIRTUAL	(37,319)	(39,451)	(36,913)	(37,751)	(27,809)	(37,241)	(35,777)
	17	18	19	20	21	22	23
DAM NYCA	271,516	288,327	274,410	268,608	281,426	275,070	289,048
DAM NON-NYCA	104,917	109,740	111,414	116,003	107,107	97,321	85,400
DAM WHEELS	8,050	7,684	7,425	7,575	7,649	7,200	7,325
DAM VIRTUAL	41,625	31,726	39,540	31,692	30,669	36,534	30,209
BALANCING NYCA	12,663	7,498	29,628	4,008	3,018	15,769	10,552
BALANCING NON-NYCA	12,136	15,413	841	3,801	(406)	(156)	4,807
BALANCING WHEELS	(800)	(1,194)	(175)	(375)	(449)	0	(2,537)
BALANCING VIRTUAL	(41,625)	(31,726)	(39,540)	(31,692)	(30,669)	(36,534)	(30,209)
	24	25	26	27	28	29	30
DAM NYCA	316,204	323,010	310,684	319,539	322,026	303,959	310,720
DAM NON-NYCA	91,779	92,455	96,036	91,356	89,917	87,969	77,548
DAM WHEELS	9,125	10,343	8,250	7,325	7,200	7,325	7,325
DAM VIRTUAL	33,253	27,098	27,301	24,540	34,185	24,502	23,923
BALANCING NYCA	5,709	4,190	12,884	2,919	3,885	15,468	15,764
BALANCING NON-NYCA	4,620	984	(6,131)	(854)	8,746	10,760	14,337
BALANCING WHEELS	(2,861)	(4,703)	(2,521)	(1,529)	(2,709)	(1,223)	(3,172)
BALANCING VIRTUAL	(33,253)	(27,098)	(27,301)	(24,540)	(34,185)	(24,502)	(23,923)



SETTLEMENTS REPORT  
 April 2023 Settlement Adjustment  
 May 5, 2023

**Initial Settlement Adjustment – Market Supply Analysis**

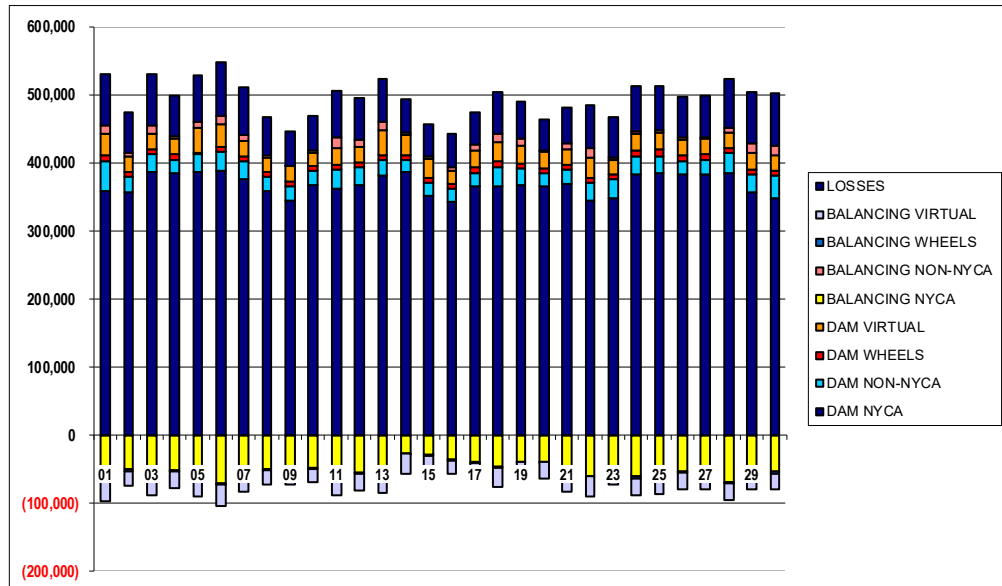
	MONDAY	TUESDAY	WEDNESDAY	THURSDAY	FRIDAY	SATURDAY	SUNDAY
						1	2
DAM NYCA						306,423	305,286
DAM NON-NYCA						78,629	76,719
DAM WHEELS						7,775	7,600
DAM VIRTUAL						55,183	25,644
BALANCING NYCA						35,612	5,007
BALANCING NON-NYCA						8,536	7,716
BALANCING WHEELS						(2,958)	(2,356)
BALANCING VIRTUAL						(55,183)	(25,644)
	3	4	5	6	7	8	9
DAM NYCA	329,081	324,175	335,221	333,861	312,567	290,866	285,397
DAM NON-NYCA	71,744	80,836	82,828	82,979	86,600	90,818	73,902
DAM WHEELS	7,200	7,700	2,431	7,250	7,375	7,725	7,925
DAM VIRTUAL	40,490	30,452	38,406	38,676	32,259	25,060	33,537
BALANCING NYCA	24,445	7,911	15,385	12,803	22,145	12,345	3,831
BALANCING NON-NYCA	13,062	3,686	3,497	7,997	(894)	(5,793)	4,822
BALANCING WHEELS	(2,102)	(2,523)	(1,470)	(986)	(1,086)	(2,193)	(2,393)
BALANCING VIRTUAL	(40,490)	(30,452)	(38,406)	(38,676)	(32,259)	(25,060)	(33,537)
	10	11	12	13	14	15	16
DAM NYCA	288,286	286,539	290,174	321,348	309,796	271,763	259,575
DAM NON-NYCA	88,803	96,194	96,918	88,596	102,765	94,723	91,018
DAM WHEELS	7,475	7,200	7,212	7,325	7,577	7,775	7,775
DAM VIRTUAL	37,319	39,451	36,913	37,751	27,809	37,241	35,777
BALANCING NYCA	1,279	20,722	11,850	9,478	2,167	7,546	12,227
BALANCING NON-NYCA	14,264	10,689	9,039	11,795	16,093	18,586	17,757
BALANCING WHEELS	(940)	(1,332)	(1,606)	(561)	(1,092)	(575)	(887)
BALANCING VIRTUAL	(37,319)	(39,451)	(36,913)	(37,751)	(27,809)	(37,241)	(35,777)
	17	18	19	20	21	22	23
DAM NYCA	271,516	288,327	274,410	268,608	281,426	275,070	289,048
DAM NON-NYCA	104,917	109,740	111,414	116,003	107,107	97,321	85,400
DAM WHEELS	8,050	7,684	7,425	7,575	7,649	7,200	7,325
DAM VIRTUAL	41,625	31,726	39,540	31,692	30,669	36,534	30,209
BALANCING NYCA	13,000	7,728	31,779	4,011	3,253	15,769	10,552
BALANCING NON-NYCA	12,136	15,413	1,341	3,801	(406)	(156)	4,807
BALANCING WHEELS	(800)	(1,194)	(175)	(375)	(449)	0	(2,537)
BALANCING VIRTUAL	(41,625)	(31,726)	(39,540)	(31,692)	(30,669)	(36,534)	(30,209)
	24	25	26	27	28	29	30
DAM NYCA	316,204	323,010	310,684	319,539	322,026	303,959	310,720
DAM NON-NYCA	91,779	92,455	96,036	91,356	89,917	87,969	77,548
DAM WHEELS	9,125	10,343	8,250	7,325	7,200	7,325	7,325
DAM VIRTUAL	33,253	27,098	27,301	24,540	34,185	24,502	23,923
BALANCING NYCA	5,709	4,190	12,884	2,919	3,923	15,468	15,764
BALANCING NON-NYCA	4,620	984	(6,131)	(854)	8,746	10,760	14,337
BALANCING WHEELS	(2,861)	(4,703)	(2,521)	(1,529)	(2,709)	(1,223)	(3,172)
BALANCING VIRTUAL	(33,253)	(27,098)	(27,301)	(24,540)	(34,185)	(24,502)	(23,923)



**SETTLEMENTS REPORT**  
 April 2023 Settlement Adjustment  
 May 5, 2023

**Weekly Settlement – Market Withdrawals Analysis**

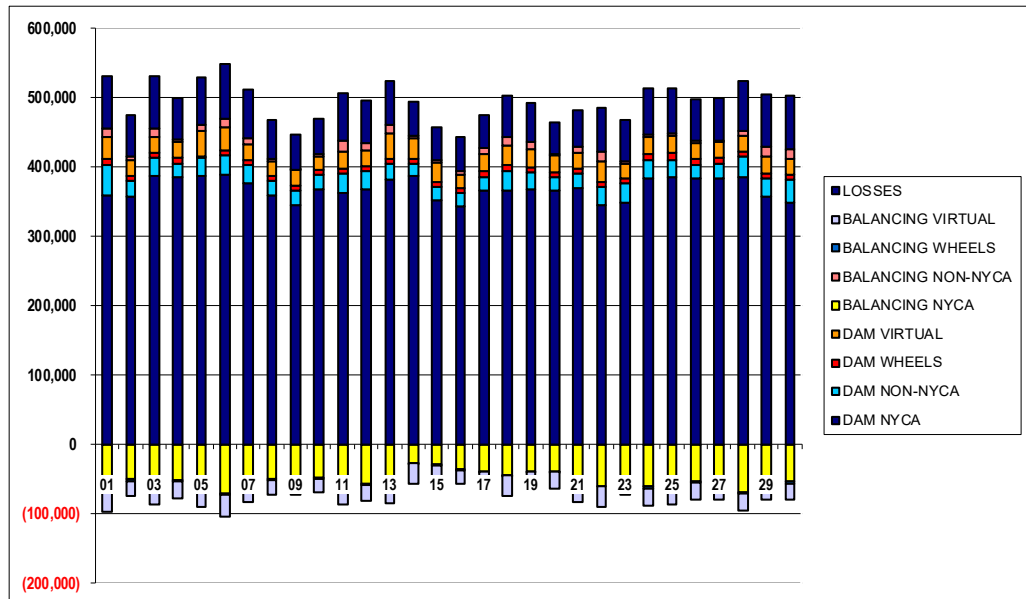
	MONDAY	TUESDAY	WEDNESDAY	THURSDAY	FRIDAY	SATURDAY	SUNDAY
						1	2
DAM NYCA						359,246	356,699
DAM NON-NYCA						43,459	22,821
DAM WHEELS						7,775	7,600
DAM VIRTUAL						31,490	21,893
BALANCING NYCA						(62,635)	(50,381)
BALANCING NON-NYCA						12,297	5,355
BALANCING WHEELS						(2,958)	(2,356)
BALANCING VIRTUAL						(31,490)	(21,893)
UFE/LOSSES						76,833	60,232
	3	4	5	6	7	8	9
DAM NYCA	386,737	384,433	387,050	388,669	376,001	358,281	345,116
DAM NON-NYCA	25,591	20,359	25,135	28,423	26,673	21,347	19,690
DAM WHEELS	7,200	7,700	2,431	7,250	7,375	7,725	7,925
DAM VIRTUAL	22,598	24,078	37,522	32,109	22,154	21,252	22,567
BALANCING NYCA	(63,311)	(50,943)	(51,839)	(70,838)	(60,676)	(49,546)	(47,991)
BALANCING NON-NYCA	13,535	2,844	7,350	13,323	8,506	2,064	504
BALANCING WHEELS	(2,102)	(2,523)	(1,470)	(986)	(1,086)	(2,193)	(2,393)
BALANCING VIRTUAL	(22,598)	(24,078)	(37,522)	(32,109)	(22,154)	(21,252)	(22,567)
UFE/LOSSES	74,114	59,889	69,258	78,081	69,785	56,090	50,633
	10	11	12	13	14	15	16
DAM NYCA	367,023	363,035	367,233	381,290	385,853	351,903	342,308
DAM NON-NYCA	21,263	27,201	25,621	22,617	18,558	18,956	19,605
DAM WHEELS	7,475	7,200	7,212	7,325	7,577	7,775	7,775
DAM VIRTUAL	19,649	24,294	23,903	36,183	28,916	27,094	18,821
BALANCING NYCA	(48,937)	(62,402)	(55,871)	(47,985)	(26,413)	(29,472)	(36,618)
BALANCING NON-NYCA	3,002	15,136	10,426	13,296	3,923	3,912	5,771
BALANCING WHEELS	(940)	(1,332)	(1,606)	(561)	(1,092)	(575)	(887)
BALANCING VIRTUAL	(19,649)	(24,294)	(23,903)	(36,183)	(28,916)	(27,094)	(18,821)
UFE/LOSSES	50,282	69,178	60,275	62,018	48,920	47,319	49,282
	17	18	19	20	21	22	23
DAM NYCA	365,608	366,281	367,225	365,672	369,489	344,226	348,047
DAM NON-NYCA	19,630	28,035	24,199	18,576	20,072	26,496	27,476
DAM WHEELS	8,050	7,684	7,425	7,575	7,649	7,200	7,325
DAM VIRTUAL	25,521	29,070	27,035	24,595	22,255	30,247	21,083
BALANCING NYCA	(39,602)	(46,682)	(38,940)	(38,571)	(59,883)	(59,742)	(49,494)
BALANCING NON-NYCA	7,354	12,384	10,646	1,679	8,520	12,902	3,469
BALANCING WHEELS	(800)	(1,194)	(175)	(375)	(449)	0	(2,537)
BALANCING VIRTUAL	(25,521)	(29,070)	(27,035)	(24,595)	(22,255)	(30,247)	(21,083)
UFE/LOSSES	48,242	60,960	53,163	45,063	52,946	64,122	60,310
	24	25	26	27	28	29	30
DAM NYCA	383,278	385,087	384,045	382,921	385,069	356,241	348,106
DAM NON-NYCA	25,370	24,478	18,759	22,072	29,100	26,857	33,838
DAM WHEELS	9,125	10,343	8,250	7,325	7,200	7,325	7,325
DAM VIRTUAL	24,747	24,821	23,597	23,295	23,857	24,435	22,532
BALANCING NYCA	(60,852)	(57,900)	(52,675)	(54,530)	(68,539)	(53,761)	(54,131)
BALANCING NON-NYCA	4,387	3,546	3,410	1,767	6,618	14,527	13,269
BALANCING WHEELS	(2,861)	(4,703)	(2,521)	(1,529)	(2,709)	(1,223)	(3,172)
BALANCING VIRTUAL	(24,747)	(24,821)	(23,597)	(23,295)	(23,857)	(24,435)	(22,532)
UFE/LOSSES	66,128	65,429	59,934	60,731	72,326	74,292	77,286



SETTLEMENTS REPORT  
 April 2023 Settlement Adjustment  
 May 5, 2023

**Initial Settlement Adjustment – Market Withdrawals Analysis**

	MONDAY	TUESDAY	WEDNESDAY	THURSDAY	FRIDAY	SATURDAY	SUNDAY
						1	2
DAM NYCA						359,246	356,699
DAM NON-NYCA						43,459	22,821
DAM WHEELS						7,775	7,600
DAM VIRTUAL						31,490	21,893
BALANCING NYCA						(62,623)	(50,369)
BALANCING NON-NYCA						12,297	5,355
BALANCING WHEELS						(2,958)	(2,356)
BALANCING VIRTUAL						(31,490)	(21,893)
UFE/LOSSES						76,822	60,222
	3	4	5	6	7	8	9
DAM NYCA	386,737	384,433	387,050	388,669	376,001	358,281	345,116
DAM NON-NYCA	25,591	20,359	25,135	28,423	26,673	21,347	19,690
DAM WHEELS	7,200	7,700	2,431	7,250	7,375	7,725	7,925
DAM VIRTUAL	22,598	24,078	37,522	32,109	22,154	21,252	22,567
BALANCING NYCA	(61,633)	(50,899)	(51,856)	(70,857)	(60,597)	(49,535)	(47,980)
BALANCING NON-NYCA	13,535	2,844	7,350	13,323	8,506	2,064	504
BALANCING WHEELS	(2,102)	(2,523)	(1,470)	(986)	(1,086)	(2,193)	(2,393)
BALANCING VIRTUAL	(22,598)	(24,078)	(37,522)	(32,109)	(22,154)	(21,252)	(22,567)
UFE/LOSSES	74,102	59,872	69,251	78,082	69,835	56,079	50,622
	10	11	12	13	14	15	16
DAM NYCA	367,023	363,035	367,233	381,290	385,853	351,903	342,308
DAM NON-NYCA	21,263	27,201	25,621	22,617	18,558	18,956	19,605
DAM WHEELS	7,475	7,200	7,212	7,325	7,577	7,775	7,775
DAM VIRTUAL	19,649	24,294	23,903	36,183	28,916	27,094	18,821
BALANCING NYCA	(48,911)	(60,417)	(56,224)	(48,039)	(26,464)	(29,462)	(36,379)
BALANCING NON-NYCA	3,002	15,136	10,426	13,296	3,923	3,912	5,771
BALANCING WHEELS	(940)	(1,332)	(1,606)	(561)	(1,092)	(575)	(887)
BALANCING VIRTUAL	(19,649)	(24,294)	(23,903)	(36,183)	(28,916)	(27,094)	(18,821)
UFE/LOSSES	50,254	69,189	60,925	62,052	48,951	47,310	49,273
	17	18	19	20	21	22	23
DAM NYCA	365,608	366,281	367,225	365,672	369,489	344,226	348,047
DAM NON-NYCA	19,630	28,035	24,199	18,576	20,072	26,496	27,476
DAM WHEELS	8,050	7,684	7,425	7,575	7,649	7,200	7,325
DAM VIRTUAL	25,521	29,070	27,035	24,595	22,255	30,247	21,083
BALANCING NYCA	(39,256)	(43,884)	(39,002)	(38,561)	(59,954)	(59,742)	(49,494)
BALANCING NON-NYCA	7,354	12,384	10,646	1,679	8,520	12,902	3,469
BALANCING WHEELS	(800)	(1,194)	(175)	(375)	(449)	0	(2,537)
BALANCING VIRTUAL	(25,521)	(29,070)	(27,035)	(24,595)	(22,255)	(30,247)	(21,083)
UFE/LOSSES	48,234	58,392	55,877	45,055	53,253	64,122	60,310
	24	25	26	27	28	29	30
DAM NYCA	383,278	385,087	384,045	382,921	385,069	356,241	348,106
DAM NON-NYCA	25,370	24,478	18,759	22,072	29,100	26,857	33,838
DAM WHEELS	9,125	10,343	8,250	7,325	7,200	7,325	7,325
DAM VIRTUAL	24,747	24,821	23,597	23,295	23,857	24,435	22,532
BALANCING NYCA	(60,852)	(57,900)	(52,675)	(54,530)	(68,569)	(53,761)	(54,131)
BALANCING NON-NYCA	4,387	3,546	3,410	1,767	6,618	14,527	13,269
BALANCING WHEELS	(2,861)	(4,703)	(2,521)	(1,529)	(2,709)	(1,223)	(3,172)
BALANCING VIRTUAL	(24,747)	(24,821)	(23,597)	(23,295)	(23,857)	(24,435)	(22,532)
UFE/LOSSES	66,128	65,429	59,934	60,731	72,394	74,292	77,286

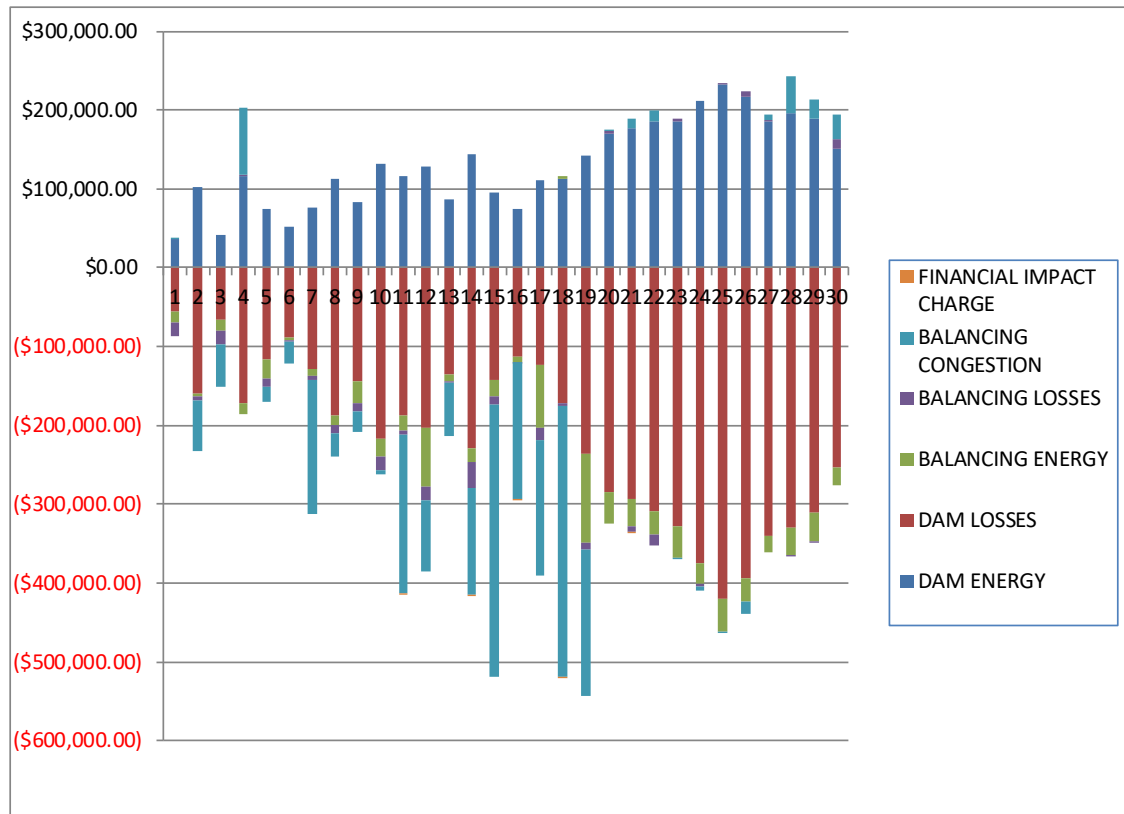




**SETTLEMENTS REPORT**  
 April 2023 Settlement Adjustment  
 May 5, 2023

**Weekly Settlement – Market Residuals Analysis**

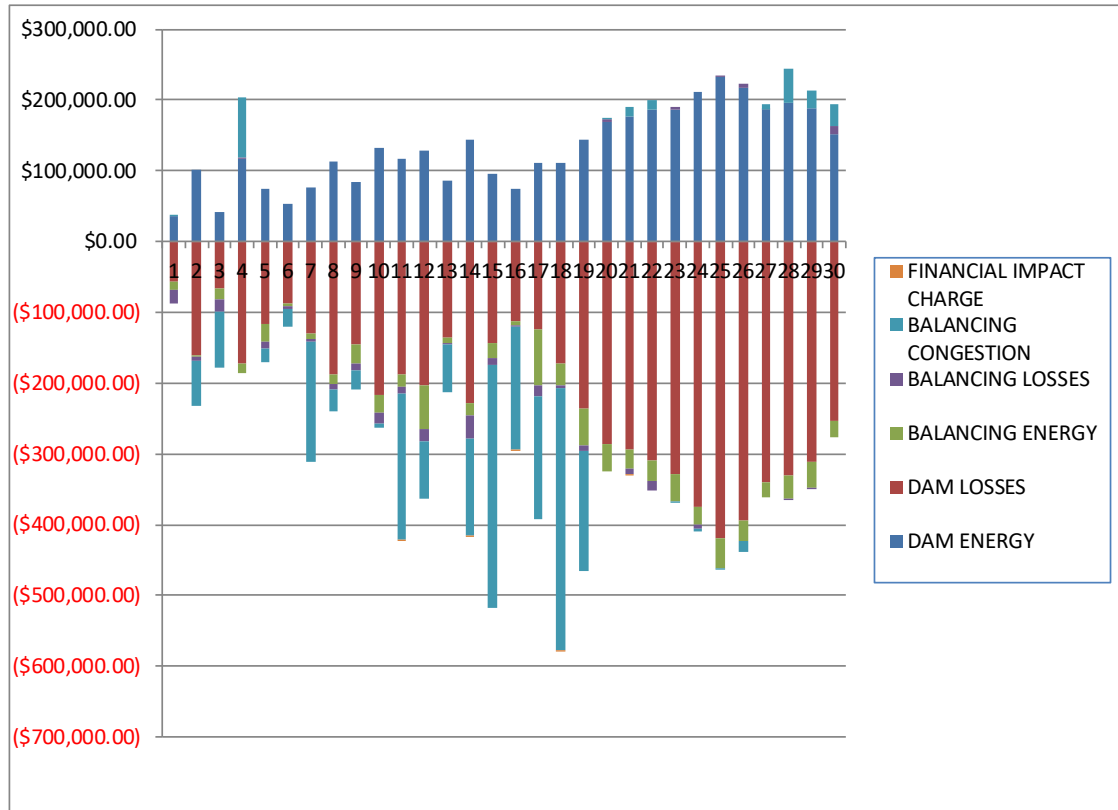
	MONDAY	TUESDAY	WEDNESDAY	THURSDAY	FRIDAY	SATURDAY	SUNDAY
						1	2
DAM ENERGY						\$36,249.56	\$101,575.11
DAM LOSSES						(\$56,208.13)	(\$160,318.93)
BALANCING ENERGY						(\$12,736.95)	(\$2,647.63)
BALANCING LOSSES						(\$17,830.72)	(\$6,051.61)
BALANCING CONGESTION						\$2,237.63	(\$62,912.59)
FINANCIAL IMPACT CHARGE						\$0.00	\$0.00
	3	4	5	6	7	8	9
DAM ENERGY	\$41,704.36	\$116,711.57	\$74,049.24	\$52,579.20	\$76,125.70	\$112,846.61	\$83,206.03
DAM LOSSES	(\$66,686.90)	(\$172,240.05)	(\$116,057.34)	(\$88,172.33)	(\$129,143.27)	(\$188,232.83)	(\$144,392.88)
BALANCING ENERGY	(\$13,474.53)	(\$13,870.49)	(\$25,488.85)	(\$3,277.23)	(\$8,807.45)	(\$12,190.99)	(\$28,029.48)
BALANCING LOSSES	(\$17,639.25)	\$1,914.76	(\$9,648.03)	(\$3,039.36)	(\$4,295.19)	(\$8,999.92)	(\$9,869.92)
BALANCING CONGESTION	(\$52,743.37)	\$84,546.10	(\$18,699.89)	(\$26,440.67)	(\$169,802.40)	(\$30,471.42)	(\$25,687.34)
FINANCIAL IMPACT CHARGE	\$0.00	\$0.00	\$0.00	\$0.00	\$0.00	\$0.00	\$0.00
	10	11	12	13	14	15	16
DAM ENERGY	\$131,515.68	\$116,798.90	\$128,576.93	\$86,742.36	\$144,672.17	\$94,810.50	\$75,117.79
DAM LOSSES	(\$216,607.17)	(\$188,275.90)	(\$203,945.90)	(\$135,657.22)	(\$228,977.65)	(\$142,976.18)	(\$113,029.62)
BALANCING ENERGY	(\$23,849.79)	(\$17,740.00)	(\$74,410.74)	(\$7,712.09)	(\$18,162.87)	(\$20,840.65)	(\$5,979.51)
BALANCING LOSSES	(\$16,675.30)	(\$6,600.61)	(\$17,368.86)	(\$1,827.90)	(\$31,881.46)	(\$10,326.72)	(\$895.92)
BALANCING CONGESTION	(\$5,611.14)	(\$201,382.91)	(\$89,115.05)	(\$68,865.82)	(\$135,836.64)	(\$344,074.91)	(\$173,119.61)
FINANCIAL IMPACT CHARGE	\$0.00	(\$392.14)	\$0.00	\$0.00	(\$76.96)	\$0.00	(\$264.55)
	17	18	19	20	21	22	23
DAM ENERGY	\$111,360.73	\$112,028.33	\$143,032.14	\$169,205.63	\$176,363.49	\$186,089.19	\$185,823.28
DAM LOSSES	(\$123,243.37)	(\$171,879.77)	(\$236,164.28)	(\$285,442.57)	(\$294,228.67)	(\$308,655.67)	(\$328,122.57)
BALANCING ENERGY	(\$80,179.14)	\$4,935.13	(\$112,283.09)	(\$39,021.00)	(\$33,146.40)	(\$29,783.38)	(\$39,370.96)
BALANCING LOSSES	(\$14,948.35)	(\$3,002.12)	(\$9,698.99)	\$3,639.85	(\$7,192.00)	(\$13,925.07)	\$4,015.86
BALANCING CONGESTION	(\$173,020.45)	(\$344,962.84)	(\$184,334.59)	\$428.31	\$13,237.53	\$13,448.91	(\$1,465.61)
FINANCIAL IMPACT CHARGE	\$0.00	(\$141.98)	\$0.00	\$0.00	(\$9.19)	\$0.00	\$0.00
	24	25	26	27	28	29	30
DAM ENERGY	\$211,917.70	\$232,053.29	\$216,335.74	\$186,332.51	\$195,222.16	\$188,822.18	\$151,643.32
DAM LOSSES	(\$374,625.04)	(\$419,814.57)	(\$393,861.93)	(\$340,027.58)	(\$329,950.38)	(\$310,560.15)	(\$254,086.66)
BALANCING ENERGY	(\$25,773.29)	(\$41,115.46)	(\$29,267.81)	(\$20,883.83)	(\$34,164.54)	(\$36,377.26)	(\$22,233.79)
BALANCING LOSSES	(\$4,493.89)	\$2,302.85	\$7,222.14	\$125.89	(\$1,143.62)	(\$1,186.51)	\$10,688.33
BALANCING CONGESTION	(\$4,923.50)	(\$402.37)	(\$15,700.61)	\$8,293.48	\$47,282.50	\$24,414.68	\$32,133.07
FINANCIAL IMPACT CHARGE	\$0.00	\$0.00	\$0.00	\$0.00	\$0.00	\$0.00	\$0.00



**SETTLEMENTS REPORT**  
**April 2023 Settlement Adjustment**  
**May 5, 2023**

**Initial Settlement Adjustment – Market Residuals Analysis**

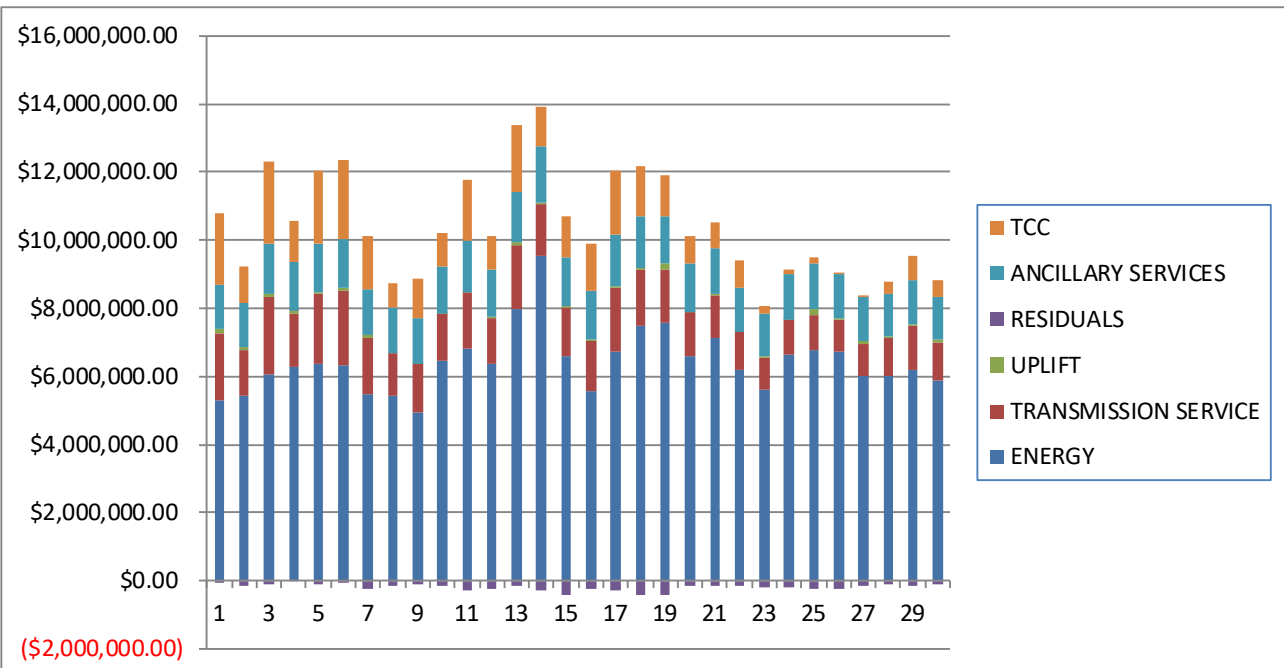
	MONDAY	TUESDAY	WEDNESDAY	THURSDAY	FRIDAY	SATURDAY	SUNDAY
						1	2
DAM ENERGY						\$36,249.56	\$101,575.10
DAM LOSSES						(\$56,208.12)	(\$160,318.92)
BALANCING ENERGY						(\$12,892.64)	(\$2,815.51)
BALANCING LOSSES						(\$17,832.17)	(\$6,051.92)
BALANCING CONGESTION						\$2,185.64	(\$62,919.49)
FINANCIAL IMPACT CHARGE						\$0.00	\$0.00
	3	4	5	6	7	8	9
DAM ENERGY	\$41,704.37	\$116,711.57	\$74,049.25	\$52,579.19	\$76,125.69	\$112,846.61	\$83,206.03
DAM LOSSES	(\$66,686.90)	(\$172,240.05)	(\$116,057.34)	(\$88,172.33)	(\$129,143.27)	(\$188,232.83)	(\$144,392.87)
BALANCING ENERGY	(\$14,076.92)	(\$14,041.93)	(\$25,589.04)	(\$3,261.41)	(\$8,400.27)	(\$12,411.89)	(\$28,286.43)
BALANCING LOSSES	(\$17,941.48)	\$1,921.62	(\$9,643.41)	(\$3,030.02)	(\$4,252.69)	(\$9,004.25)	(\$9,875.10)
BALANCING CONGESTION	(\$79,250.80)	\$84,233.93	(\$19,082.64)	(\$26,017.86)	(\$168,914.22)	(\$30,483.41)	(\$25,694.46)
FINANCIAL IMPACT CHARGE	\$0.00	\$0.00	\$0.00	\$0.00	\$0.00	\$0.00	\$0.00
	10	11	12	13	14	15	16
DAM ENERGY	\$131,515.68	\$116,798.91	\$128,576.93	\$86,742.36	\$144,672.16	\$94,810.50	\$75,117.79
DAM LOSSES	(\$216,607.17)	(\$188,275.89)	(\$203,945.90)	(\$135,657.22)	(\$228,977.65)	(\$142,976.19)	(\$113,029.63)
BALANCING ENERGY	(\$24,168.18)	(\$17,691.00)	(\$61,579.36)	(\$7,255.13)	(\$16,822.76)	(\$20,972.96)	(\$6,025.11)
BALANCING LOSSES	(\$16,676.79)	(\$8,587.86)	(\$16,207.76)	(\$1,798.44)	(\$31,645.06)	(\$10,325.23)	(\$886.37)
BALANCING CONGESTION	(\$5,611.03)	(\$207,440.25)	(\$81,448.48)	(\$67,623.75)	(\$138,166.10)	(\$344,075.02)	(\$173,124.36)
FINANCIAL IMPACT CHARGE	\$0.00	(\$392.17)	\$0.00	\$0.00	(\$76.97)	\$0.00	(\$264.55)
	17	18	19	20	21	22	23
DAM ENERGY	\$111,360.73	\$112,028.33	\$143,032.13	\$169,205.64	\$176,363.49	\$186,089.19	\$185,823.28
DAM LOSSES	(\$123,243.37)	(\$171,879.77)	(\$236,164.28)	(\$285,442.56)	(\$294,228.67)	(\$308,655.67)	(\$328,122.57)
BALANCING ENERGY	(\$80,342.85)	(\$31,913.91)	(\$52,071.43)	(\$39,221.91)	(\$27,461.09)	(\$29,783.38)	(\$39,370.96)
BALANCING LOSSES	(\$14,901.50)	(\$3,952.63)	(\$7,995.64)	\$3,530.22	(\$6,785.15)	(\$13,925.07)	\$4,015.86
BALANCING CONGESTION	(\$172,737.50)	(\$368,589.61)	(\$168,623.84)	\$485.15	\$13,734.94	\$13,448.91	(\$1,465.61)
FINANCIAL IMPACT CHARGE	\$0.00	(\$142.11)	\$0.00	\$0.00	(\$9.20)	\$0.00	\$0.00
	24	25	26	27	28	29	30
DAM ENERGY	\$211,917.70	\$232,053.29	\$216,335.74	\$186,332.51	\$195,222.16	\$188,822.18	\$151,643.32
DAM LOSSES	(\$374,625.04)	(\$419,814.57)	(\$393,861.93)	(\$340,027.58)	(\$329,950.37)	(\$310,560.15)	(\$254,086.66)
BALANCING ENERGY	(\$25,773.29)	(\$41,110.48)	(\$29,266.86)	(\$20,883.83)	(\$32,834.11)	(\$36,377.26)	(\$22,233.79)
BALANCING LOSSES	(\$4,493.89)	\$2,303.08	\$7,222.20	\$125.89	(\$1,110.62)	(\$1,186.51)	\$10,688.33
BALANCING CONGESTION	(\$4,923.50)	(\$402.29)	(\$15,700.61)	\$8,293.48	\$48,147.24	\$24,414.68	\$32,133.07
FINANCIAL IMPACT CHARGE	\$0.00	\$0.00	\$0.00	\$0.00	\$0.00	\$0.00	\$0.00



**SETTLEMENTS REPORT**  
**April 2023 Settlement Adjustment**  
**May 5, 2023**

**Weekly Settlement – Market Costs Analysis**

	MONDAY	TUESDAY	WEDNESDAY	THURSDAY	FRIDAY	SATURDAY	SUNDAY
						1	2
ENERGY						\$5,280,367.90	\$5,413,930.09
TRANSMISSION SERVICE						\$1,988,892.76	\$1,369,451.21
UPLIFT						\$115,310.94	\$68,255.88
RESIDUALS						(\$48,288.61)	(\$130,355.65)
ANCILLARY SERVICES						\$1,306,935.30	\$1,323,756.81
TCC						\$2,088,270.60	\$1,061,673.65
	3	4	5	6	7	8	9
ENERGY	\$6,071,593.17	\$6,271,748.97	\$6,370,196.07	\$6,312,730.85	\$5,456,067.15	\$5,443,910.18	\$4,953,635.54
TRANSMISSION SERVICE	\$2,280,631.78	\$1,588,556.01	\$2,070,664.99	\$2,204,156.84	\$1,670,221.80	\$1,221,039.11	\$1,405,159.83
UPLIFT	\$77,193.45	\$57,255.59	\$38,743.45	\$78,346.17	\$71,326.88	\$27,900.11	\$18,857.93
RESIDUALS	(\$108,839.69)	\$17,061.89	(\$95,844.87)	(\$68,350.39)	(\$235,922.61)	(\$127,048.55)	(\$124,773.59)
ANCILLARY SERVICES	\$1,457,373.59	\$1,405,667.77	\$1,413,444.38	\$1,447,165.88	\$1,363,369.91	\$1,331,146.37	\$1,331,256.04
TCC	\$2,397,887.20	\$1,220,361.76	\$2,151,293.93	\$2,316,162.01	\$1,556,984.70	\$727,903.67	\$1,138,873.86
	10	11	12	13	14	15	16
ENERGY	\$6,459,197.02	\$6,796,340.43	\$6,366,579.60	\$7,964,850.49	\$9,526,329.45	\$6,595,640.53	\$5,543,825.03
TRANSMISSION SERVICE	\$1,370,675.29	\$1,664,796.92	\$1,352,994.05	\$1,896,873.61	\$1,527,104.56	\$1,419,680.99	\$1,503,831.43
UPLIFT	\$13,172.74	\$28,200.11	\$12,366.76	\$95,560.43	\$55,890.93	\$38,474.92	\$29,619.53
RESIDUALS	(\$131,227.72)	(\$297,592.66)	(\$256,263.62)	(\$127,320.67)	(\$270,263.41)	(\$423,407.96)	(\$218,171.42)
ANCILLARY SERVICES	\$1,392,831.50	\$1,481,046.15	\$1,383,525.87	\$1,447,571.40	\$1,644,806.80	\$1,445,806.92	\$1,438,361.86
TCC	\$957,514.64	\$1,786,258.96	\$1,008,742.17	\$1,983,841.52	\$1,138,614.54	\$1,191,435.57	\$1,371,831.95
	17	18	19	20	21	22	23
ENERGY	\$6,738,942.27	\$7,505,512.26	\$7,595,527.10	\$6,614,819.26	\$7,122,545.17	\$6,186,447.49	\$5,616,125.73
TRANSMISSION SERVICE	\$1,840,499.23	\$1,615,021.70	\$1,544,405.40	\$1,259,433.69	\$1,274,522.40	\$1,104,302.01	\$941,979.63
UPLIFT	\$65,673.13	\$69,742.41	\$159,331.60	\$27,964.52	\$10,803.66	\$20,099.01	\$31,983.50
RESIDUALS	(\$280,030.58)	(\$403,023.25)	(\$399,448.81)	(\$151,189.78)	(\$144,975.24)	(\$152,826.02)	(\$179,120.00)
ANCILLARY SERVICES	\$1,523,640.52	\$1,513,941.00	\$1,411,190.58	\$1,417,839.75	\$1,360,251.52	\$1,302,067.37	\$1,262,211.05
TCC	\$1,882,391.96	\$1,447,880.61	\$1,195,205.86	\$779,543.75	\$769,970.53	\$783,381.35	\$212,574.84
	24	25	26	27	28	29	30
ENERGY	\$6,626,611.63	\$6,761,511.62	\$6,717,825.87	\$6,027,617.14	\$6,007,018.55	\$6,212,350.71	\$5,881,757.84
TRANSMISSION SERVICE	\$1,019,034.82	\$1,053,077.74	\$960,213.15	\$933,688.89	\$1,111,967.67	\$1,272,540.41	\$1,128,251.16
UPLIFT	\$16,688.26	\$155,483.11	\$38,904.50	\$91,127.01	\$39,558.73	\$44,952.56	\$61,451.58
RESIDUALS	(\$197,898.02)	(\$226,976.26)	(\$215,272.47)	(\$166,159.53)	(\$122,753.88)	(\$134,887.06)	(\$81,855.73)
ANCILLARY SERVICES	\$1,320,736.54	\$1,350,818.42	\$1,297,962.36	\$1,260,158.08	\$1,268,745.63	\$1,316,871.94	\$1,252,203.59
TCC	\$155,037.40	\$159,891.12	\$29,730.49	\$43,512.80	\$338,651.62	\$710,444.22	\$499,451.19



SETTLEMENTS REPORT  
 April 2023 Settlement Adjustment  
 May 5, 2023

**Initial Settlement Adjustment – Market Costs Analysis**

	MONDAY	TUESDAY	WEDNESDAY	THURSDAY	FRIDAY	SATURDAY	SUNDAY
						1	2
ENERGY						\$5,280,662.92	\$5,414,138.50
TRANSMISSION SERVICE						\$1,988,915.43	\$1,369,473.11
UPLIFT						\$115,310.94	\$68,255.90
RESIDUALS						(\$48,497.73)	(\$130,530.74)
ANCILLARY SERVICES						\$1,306,955.24	\$1,323,775.77
TCC						\$2,088,270.60	\$1,061,673.65
						3	4
ENERGY	\$6,108,802.21	\$6,272,831.50	\$6,369,640.91	\$6,312,170.00	\$5,456,306.15	\$5,444,144.26	\$4,953,913.78
TRANSMISSION SERVICE	\$2,283,785.85	\$1,588,639.45	\$2,070,634.26	\$2,204,120.88	\$1,670,366.68	\$1,221,060.52	\$1,405,180.74
UPLIFT	\$77,193.46	\$57,255.61	\$38,739.69	\$78,346.19	\$71,326.87	\$27,900.11	\$18,857.93
RESIDUALS	(\$136,251.73)	\$16,585.14	(\$96,323.18)	(\$67,902.43)	(\$234,584.76)	(\$127,285.77)	(\$125,042.83)
ANCILLARY SERVICES	\$1,460,179.88	\$1,405,739.64	\$1,413,417.02	\$1,447,138.64	\$1,363,517.51	\$1,331,164.92	\$1,331,274.13
TCC	\$2,397,887.20	\$1,220,361.76	\$2,151,293.93	\$2,316,162.01	\$1,556,984.70	\$727,903.67	\$1,138,873.86
						5	6
ENERGY	\$6,459,481.14	\$6,829,080.65	\$6,359,264.36	\$7,961,304.23	\$9,529,450.01	\$6,595,775.07	\$5,546,516.37
TRANSMISSION SERVICE	\$1,370,724.59	\$1,668,535.31	\$1,352,329.33	\$1,896,807.52	\$1,527,045.08	\$1,419,698.44	\$1,504,280.26
UPLIFT	\$13,172.76	\$28,200.11	\$12,366.78	\$95,433.17	\$54,980.91	\$38,474.92	\$29,619.52
RESIDUALS	(\$131,547.49)	(\$305,588.26)	(\$234,604.57)	(\$125,592.18)	(\$271,016.38)	(\$423,538.90)	(\$218,212.23)
ANCILLARY SERVICES	\$1,392,869.43	\$1,484,320.51	\$1,383,158.07	\$1,447,450.91	\$1,644,537.47	\$1,445,822.47	\$1,438,761.30
TCC	\$957,514.64	\$1,786,258.96	\$1,008,742.17	\$1,983,841.52	\$1,138,614.54	\$1,191,435.57	\$1,371,831.95
						7	8
ENERGY	\$6,746,112.67	\$7,572,684.77	\$7,593,384.91	\$6,615,133.90	\$7,120,595.27	\$6,186,447.49	\$5,616,125.73
TRANSMISSION SERVICE	\$1,841,149.01	\$1,620,282.30	\$1,544,332.44	\$1,259,452.91	\$1,274,387.31	\$1,104,302.01	\$941,979.63
UPLIFT	\$65,673.12	\$69,742.41	\$157,070.81	\$27,964.52	\$10,757.82	\$20,099.01	\$31,983.50
RESIDUALS	(\$279,864.49)	(\$464,449.70)	(\$321,823.06)	(\$151,443.46)	(\$138,385.68)	(\$152,826.02)	(\$179,120.00)
ANCILLARY SERVICES	\$1,524,218.78	\$1,517,750.08	\$1,411,092.09	\$1,417,857.24	\$1,360,237.46	\$1,302,067.37	\$1,262,211.05
TCC	\$1,882,391.96	\$1,447,880.61	\$1,195,205.86	\$779,543.75	\$769,970.53	\$783,381.35	\$212,574.84
						9	10
ENERGY	\$6,626,611.63	\$6,761,506.25	\$6,717,824.87	\$6,027,617.14	\$6,006,306.47	\$6,212,350.71	\$5,881,757.84
TRANSMISSION SERVICE	\$1,019,034.82	\$1,053,077.74	\$960,213.15	\$933,688.89	\$1,111,928.70	\$1,272,540.41	\$1,128,251.16
UPLIFT	\$16,688.26	\$155,483.11	\$38,904.50	\$91,127.01	\$39,558.71	\$44,952.56	\$61,451.58
RESIDUALS	(\$197,898.02)	(\$226,970.97)	(\$215,271.46)	(\$166,159.53)	(\$120,525.70)	(\$134,887.06)	(\$81,855.73)
ANCILLARY SERVICES	\$1,320,736.54	\$1,350,818.42	\$1,297,962.36	\$1,260,158.08	\$1,268,667.03	\$1,316,871.94	\$1,252,203.59
TCC	\$155,037.40	\$159,891.12	\$29,730.49	\$43,512.80	\$338,651.62	\$710,444.22	\$499,451.19
						11	12
ENERGY	\$6,746,112.67	\$7,572,684.77	\$7,593,384.91	\$6,615,133.90	\$7,120,595.27	\$6,186,447.49	\$5,616,125.73
TRANSMISSION SERVICE	\$1,841,149.01	\$1,620,282.30	\$1,544,332.44	\$1,259,452.91	\$1,274,387.31	\$1,104,302.01	\$941,979.63
UPLIFT	\$65,673.12	\$69,742.41	\$157,070.81	\$27,964.52	\$10,757.82	\$20,099.01	\$31,983.50
RESIDUALS	(\$279,864.49)	(\$464,449.70)	(\$321,823.06)	(\$151,443.46)	(\$138,385.68)	(\$152,826.02)	(\$179,120.00)
ANCILLARY SERVICES	\$1,524,218.78	\$1,517,750.08	\$1,411,092.09	\$1,417,857.24	\$1,360,237.46	\$1,302,067.37	\$1,262,211.05
TCC	\$1,882,391.96	\$1,447,880.61	\$1,195,205.86	\$779,543.75	\$769,970.53	\$783,381.35	\$212,574.84
						13	14
ENERGY	\$6,626,611.63	\$6,761,506.25	\$6,717,824.87	\$6,027,617.14	\$6,006,306.47	\$6,212,350.71	\$5,881,757.84
TRANSMISSION SERVICE	\$1,019,034.82	\$1,053,077.74	\$960,213.15	\$933,688.89	\$1,111,928.70	\$1,272,540.41	\$1,128,251.16
UPLIFT	\$16,688.26	\$155,483.11	\$38,904.50	\$91,127.01	\$39,558.71	\$44,952.56	\$61,451.58
RESIDUALS	(\$197,898.02)	(\$226,970.97)	(\$215,271.46)	(\$166,159.53)	(\$120,525.70)	(\$134,887.06)	(\$81,855.73)
ANCILLARY SERVICES	\$1,320,736.54	\$1,350,818.42	\$1,297,962.36	\$1,260,158.08	\$1,268,667.03	\$1,316,871.94	\$1,252,203.59
TCC	\$155,037.40	\$159,891.12	\$29,730.49	\$43,512.80	\$338,651.62	\$710,444.22	\$499,451.19
						15	16
ENERGY	\$6,626,611.63	\$6,761,506.25	\$6,717,824.87	\$6,027,617.14	\$6,006,306.47	\$6,212,350.71	\$5,881,757.84
TRANSMISSION SERVICE	\$1,019,034.82	\$1,053,077.74	\$960,213.15	\$933,688.89	\$1,111,928.70	\$1,272,540.41	\$1,128,251.16
UPLIFT	\$16,688.26	\$155,483.11	\$38,904.50	\$91,127.01	\$39,558.71	\$44,952.56	\$61,451.58
RESIDUALS	(\$197,898.02)	(\$226,970.97)	(\$215,271.46)	(\$166,159.53)	(\$120,525.70)	(\$134,887.06)	(\$81,855.73)
ANCILLARY SERVICES	\$1,320,736.54	\$1,350,818.42	\$1,297,962.36	\$1,260,158.08	\$1,268,667.03	\$1,316,871.94	\$1,252,203.59
TCC	\$155,037.40	\$159,891.12	\$29,730.49	\$43,512.80	\$338,651.62	\$710,444.22	\$499,451.19
						17	18
ENERGY	\$6,626,611.63	\$6,761,506.25	\$6,717,824.87	\$6,027,617.14	\$6,006,306.47	\$6,212,350.71	\$5,881,757.84
TRANSMISSION SERVICE	\$1,019,034.82	\$1,053,077.74	\$960,213.15	\$933,688.89	\$1,111,928.70	\$1,272,540.41	\$1,128,251.16
UPLIFT	\$16,688.26	\$155,483.11	\$38,904.50	\$91,127.01	\$39,558.71	\$44,952.56	\$61,451.58
RESIDUALS	(\$197,898.02)	(\$226,970.97)	(\$215,271.46)	(\$166,159.53)	(\$120,525.70)	(\$134,887.06)	(\$81,855.73)
ANCILLARY SERVICES	\$1,320,736.54	\$1,350,818.42	\$1,297,962.36	\$1,260,158.08	\$1,268,667.03	\$1,316,871.94	\$1,252,203.59
TCC	\$155,037.40	\$159,891.12	\$29,730.49	\$43,512.80	\$338,651.62	\$710,444.22	\$499,451.19
						19	20
ENERGY	\$6,626,611.63	\$6,761,506.25	\$6,717,824.87	\$6,027,617.14	\$6,006,306.47	\$6,212,350.71	\$5,881,757.84
TRANSMISSION SERVICE	\$1,019,034.82	\$1,053,077.74	\$960,213.15	\$933,688.89	\$1,111,928.70	\$1,272,540.41	\$1,128,251.16
UPLIFT	\$16,688.26	\$155,483.11	\$38,904.50	\$91,127.01	\$39,558.71	\$44,952.56	\$61,451.58
RESIDUALS	(\$197,898.02)	(\$226,970.97)	(\$215,271.46)	(\$166,159.53)	(\$120,525.70)	(\$134,887.06)	(\$81,855.73)
ANCILLARY SERVICES	\$1,320,736.54	\$1,350,818.42	\$1,297,962.36	\$1,260,158.08	\$1,268,667.03	\$1,316,871.94	\$1,252,203.59
TCC	\$155,037.40	\$159,891.12	\$29,730.49	\$43,512.80	\$338,651.62	\$710,444.22	\$499,451.19
						21	22
ENERGY	\$6,626,611.63	\$6,761,506.25	\$6,717,824.87	\$6,027,617.14	\$6,006,306.47	\$6,212,350.71	\$5,881,757.84
TRANSMISSION SERVICE	\$1,019,034.82	\$1,053,077.74	\$960,213.15	\$933,688.89	\$1,111,928.70	\$1,272,540.41	\$1,128,251.16
UPLIFT	\$16,688.26	\$155,483.11	\$38,904.50	\$91,127.01	\$39,558.71	\$44,952.56	\$61,451.58
RESIDUALS	(\$197,898.02)	(\$226,970.97)	(\$215,271.46)	(\$166,159.53)	(\$120,525.70)	(\$134,887.06)	(\$81,855.73)
ANCILLARY SERVICES	\$1,320,736.54	\$1,350,818.42	\$1,297,962.36	\$1,260,158.08	\$1,268,667.03	\$1,316,871.94	\$1,252,203.59
TCC	\$155,037.40	\$159,891.12	\$29,730.49	\$43,512.80	\$338,651.62	\$710,444.22	\$499,451.19
						23	24
ENERGY	\$6,626,611.63	\$6,761,506.25	\$6,717,824.87	\$6,027,617.14	\$6,006,306.47	\$6,212,350.71	\$5,881,757.84
TRANSMISSION SERVICE	\$1,019,034.82	\$1,053,077.74	\$960,213.15	\$933,688.89	\$1,111,928.70	\$1,272,540.41	\$1,128,251.16
UPLIFT	\$16,688.26	\$155,483.11	\$38,904.50	\$91,127.01	\$39,558.71	\$44,952.56	\$61,451.58
RESIDUALS	(\$197,898.02)	(\$226,970.97)	(\$215,271.46)	(\$166,159.53)	(\$120,525.70)	(\$134,887.06)	(\$81,855.73)
ANCILLARY SERVICES	\$1,320,736.54	\$1,350,818.42	\$1,297,962.36	\$1,260,158.08	\$1,268,667.03	\$1,316,871.94	\$1,252,203.59
TCC	\$155,037.40	\$159,891.12	\$29,730.49	\$43,512.80	\$338,651.62	\$710,444.22	\$499,451.19

