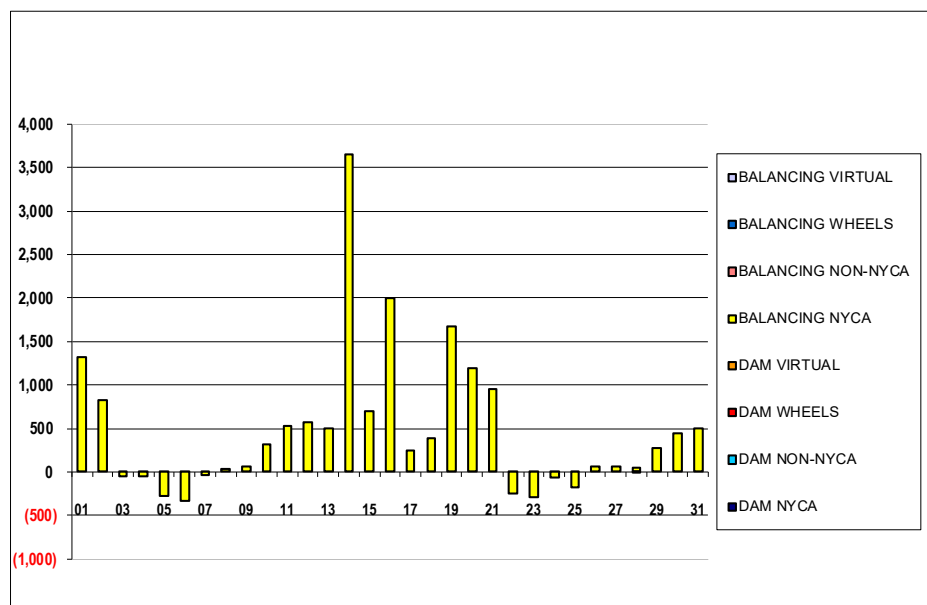


SETTLEMENTS REPORT  
 May 2023 Settlement Adjustment  
 October 6, 2023

**Settlement Adjustment – Market Supply Delta Analysis**

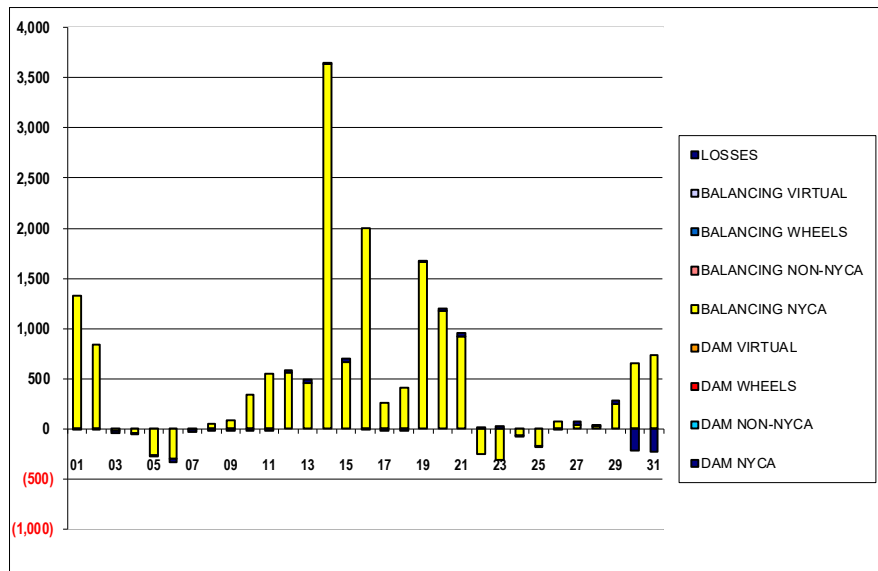
	MONDAY	TUESDAY	WEDNESDAY	THURSDAY	FRIDAY	SATURDAY	SUNDAY
	1	2	3	4	5	6	7
DAM NYCA	0	0	0	0	0	0	0
DAM NON-NYCA	0	0	0	0	0	0	0
DAM WHEELS	0	0	0	0	0	0	0
DAM VIRTUAL	0	0	0	0	0	0	0
BALANCING NYCA	1,317	828	(47)	(53)	(277)	(336)	(38)
BALANCING NON-NYCA	0	0	0	0	0	0	0
BALANCING WHEELS	0	0	0	0	0	0	0
BALANCING VIRTUAL	0	0	0	0	0	0	0
	8	9	10	11	12	13	14
DAM NYCA	0	0	0	0	0	0	0
DAM NON-NYCA	0	0	0	0	0	0	0
DAM WHEELS	0	0	0	0	0	0	0
DAM VIRTUAL	0	0	0	0	0	0	0
BALANCING NYCA	29	61	315	530	577	495	3,656
BALANCING NON-NYCA	0	0	0	0	0	0	0
BALANCING WHEELS	0	0	0	0	0	0	0
BALANCING VIRTUAL	0	0	0	0	0	0	0
	15	16	17	18	19	20	21
DAM NYCA	0	0	0	0	0	0	0
DAM NON-NYCA	0	0	0	0	0	0	0
DAM WHEELS	0	0	0	0	0	0	0
DAM VIRTUAL	0	0	0	0	0	0	0
BALANCING NYCA	703	1,995	242	390	1,677	1,198	953
BALANCING NON-NYCA	0	0	0	0	0	0	0
BALANCING WHEELS	0	0	0	0	0	0	0
BALANCING VIRTUAL	0	0	0	0	0	0	0
	22	23	24	25	26	27	28
DAM NYCA	0	0	0	0	0	0	0
DAM NON-NYCA	0	0	0	0	0	0	0
DAM WHEELS	0	0	0	0	0	0	0
DAM VIRTUAL	0	0	0	0	0	0	0
BALANCING NYCA	(251)	(295)	(65)	(175)	70	70	43
BALANCING NON-NYCA	0	0	0	0	0	0	(9)
BALANCING WHEELS	0	0	0	0	0	0	0
BALANCING VIRTUAL	0	0	0	0	0	0	0
	29	30	31				
DAM NYCA	0	0	0				
DAM NON-NYCA	0	0	0				
DAM WHEELS	0	0	0				
DAM VIRTUAL	0	0	0				
BALANCING NYCA	276	441	506				
BALANCING NON-NYCA	0	0	0				
BALANCING WHEELS	0	0	0				
BALANCING VIRTUAL	0	0	0				



SETTLEMENTS REPORT  
 May 2023 Settlement Adjustment  
 October 6, 2023

**Settlement Adjustment – Market Withdrawals Delta Analysis**

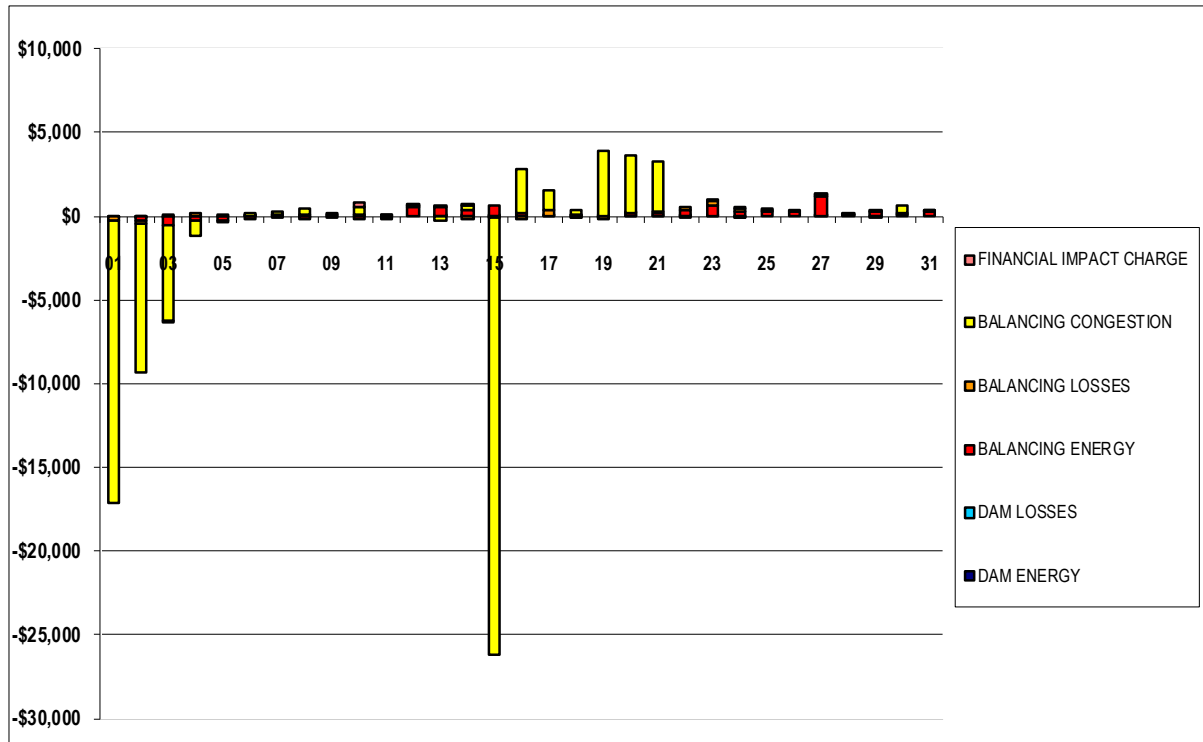
	MONDAY	TUESDAY	WEDNESDAY	THURSDAY	FRIDAY	SATURDAY	SUNDAY
	1	2	3	4	5	6	7
DAM NYCA	0	0	0	0	0	0	0
DAM NON-NYCA	0	0	0	0	0	0	0
DAM WHEELS	0	0	0	0	0	0	0
DAM VIRTUAL	0	0	0	0	0	0	0
BALANCING NYCA	1,330	839	(18)	(45)	(263)	(302)	(6)
BALANCING NON-NYCA	0	0	0	0	0	0	0
BALANCING WHEELS	0	0	0	0	0	0	0
BALANCING VIRTUAL	0	0	0	0	0	0	0
UFE/LOSSES	(13)	(11)	(30)	(8)	(13)	(34)	(32)
	8	9	10	11	12	13	14
DAM NYCA	0	0	0	0	0	0	0
DAM NON-NYCA	0	0	0	0	0	0	0
DAM WHEELS	0	0	0	0	0	0	0
DAM VIRTUAL	0	0	0	0	0	0	0
BALANCING NYCA	50	85	340	547	557	459	3,636
BALANCING NON-NYCA	0	0	0	0	0	0	0
BALANCING WHEELS	0	0	0	0	0	0	0
BALANCING VIRTUAL	0	0	0	0	0	0	0
UFE/LOSSES	(20)	(24)	(26)	(17)	20	36	20
	15	16	17	18	19	20	21
DAM NYCA	0	0	0	0	0	0	0
DAM NON-NYCA	0	0	0	0	0	0	0
DAM WHEELS	0	0	0	0	0	0	0
DAM VIRTUAL	0	0	0	0	0	0	0
BALANCING NYCA	663	2,004	260	411	1,660	1,178	923
BALANCING NON-NYCA	0	0	0	0	0	0	0
BALANCING WHEELS	0	0	0	0	0	0	0
BALANCING VIRTUAL	0	0	0	0	0	0	0
UFE/LOSSES	40	(9)	(18)	(21)	17	21	30
	22	23	24	25	26	27	28
DAM NYCA	0	0	0	0	0	0	0
DAM NON-NYCA	0	0	0	0	0	0	0
DAM WHEELS	0	0	0	0	0	0	0
DAM VIRTUAL	0	0	0	0	0	0	0
BALANCING NYCA	(256)	(317)	(63)	(167)	73	33	24
BALANCING NON-NYCA	0	0	0	0	0	0	0
BALANCING WHEELS	0	0	0	0	0	0	0
BALANCING VIRTUAL	0	0	0	0	0	0	0
UFE/LOSSES	5	22	(2)	(8)	(3)	36	10
	29	30	31				
DAM NYCA	0	0	0				
DAM NON-NYCA	0	0	0				
DAM WHEELS	0	0	0				
DAM VIRTUAL	0	0	0				
BALANCING NYCA	251	654	732				
BALANCING NON-NYCA	0	0	0				
BALANCING WHEELS	0	0	0				
BALANCING VIRTUAL	0	0	0				
UFE/LOSSES	25	(213)	(226)				



SETTLEMENTS REPORT  
 May 2023 Settlement Adjustment  
 October 6, 2023

**Settlement Adjustment – Market Residuals Delta Analysis**

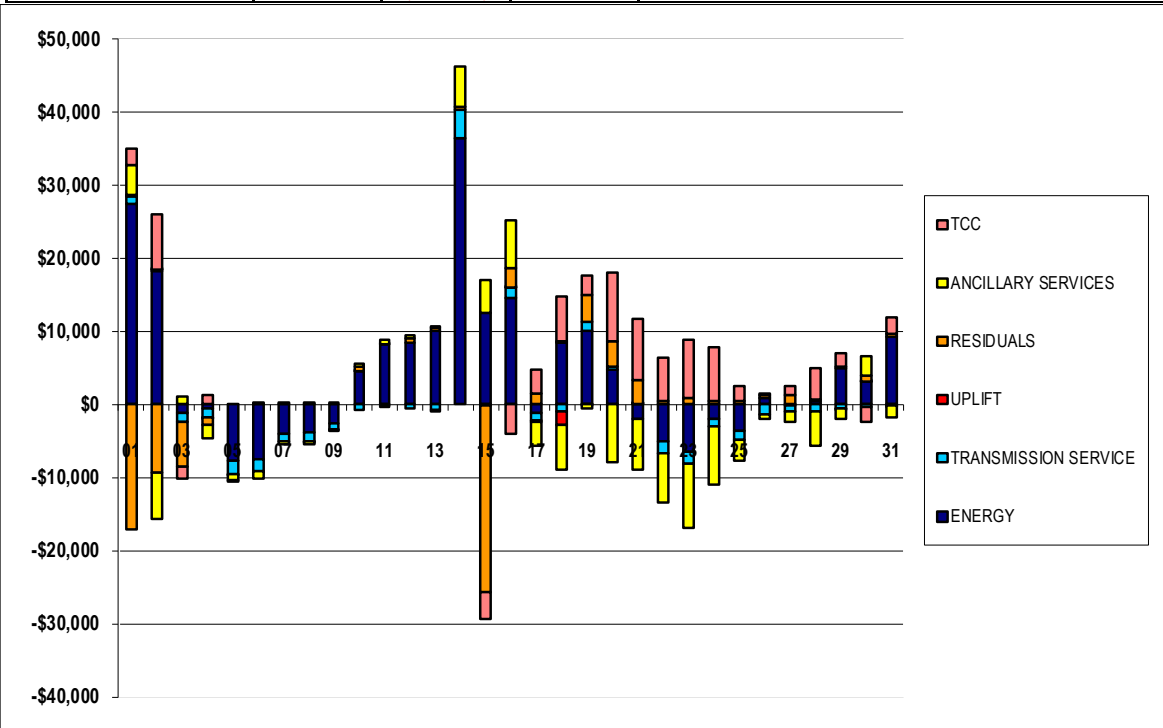
	MONDAY	TUESDAY	WEDNESDAY	THURSDAY	FRIDAY	SATURDAY	SUNDAY
	1	2	3	4	5	6	7
DAM ENERGY	\$0.00	(\$0.01)	(\$0.01)	\$0.00	\$0.00	\$0.01	\$0.00
DAM LOSSES	\$0.00	(\$0.01)	\$0.00	\$0.00	\$0.00	\$0.00	(\$0.01)
BALANCING ENERGY	(\$4.49)	(\$234.49)	(\$556.03)	(\$279.05)	(\$275.51)	(\$191.17)	\$12.40
BALANCING LOSSES	(\$289.11)	(\$238.45)	\$70.04	\$149.97	\$95.03	\$48.79	\$49.96
BALANCING CONGESTION	(\$16,804.17)	(\$8,840.83)	(\$5,660.45)	(\$902.78)	(\$1.61)	\$131.96	\$198.83
FINANCIAL IMPACT CHARGE	\$0.00	\$0.00	(\$0.05)	\$0.00	\$0.00	\$0.00	\$0.00
	8	9	10	11	12	13	14
DAM ENERGY	\$0.00	\$0.00	\$0.00	\$0.01	\$0.00	\$0.00	\$0.01
DAM LOSSES	(\$0.01)	\$0.00	\$0.00	\$0.00	\$0.00	\$0.01	\$0.00
BALANCING ENERGY	(\$136.35)	(\$100.04)	(\$171.62)	(\$64.01)	\$544.53	\$548.23	\$339.06
BALANCING LOSSES	\$65.54	\$78.20	\$96.73	\$79.78	\$93.15	\$104.29	(\$169.56)
BALANCING CONGESTION	\$430.31	\$127.96	\$421.15	(\$76.72)	\$70.99	(\$216.81)	\$338.53
FINANCIAL IMPACT CHARGE	\$0.00	\$0.00	\$310.85	\$0.00	\$0.00	\$0.00	\$0.06
	15	16	17	18	19	20	21
DAM ENERGY	\$0.01	\$0.00	\$0.00	(\$0.01)	(\$0.01)	\$0.01	\$0.01
DAM LOSSES	(\$0.01)	\$0.00	\$0.00	\$0.01	(\$0.01)	\$0.00	\$0.01
BALANCING ENERGY	\$672.31	\$154.15	\$5.16	\$77.54	\$52.60	\$178.13	\$158.71
BALANCING LOSSES	(\$56.47)	(\$194.46)	\$410.25	(\$10.53)	(\$124.37)	\$8.06	\$171.28
BALANCING CONGESTION	(\$26,081.29)	\$2,702.24	\$1,155.51	\$294.98	\$3,834.26	\$3,451.47	\$2,944.47
FINANCIAL IMPACT CHARGE	\$0.00	\$0.00	\$0.00	\$0.00	\$0.00	\$0.00	\$0.00
	22	23	24	25	26	27	28
DAM ENERGY	\$0.01	\$0.01	(\$0.01)	\$0.00	\$0.00	\$0.00	\$0.00
DAM LOSSES	\$0.01	\$0.00	\$0.00	\$0.00	\$0.00	\$0.01	\$0.00
BALANCING ENERGY	\$363.46	\$669.38	\$309.10	\$260.15	\$263.71	\$1,234.23	\$147.69
BALANCING LOSSES	\$225.38	\$271.36	\$182.13	\$148.37	\$52.65	\$70.01	\$37.37
BALANCING CONGESTION	(\$33.46)	\$52.58	\$7.74	\$24.50	\$0.00	\$0.01	\$0.00
FINANCIAL IMPACT CHARGE	\$0.00	\$0.00	(\$0.01)	\$0.00	\$0.00	\$0.00	\$0.00
	29	30	31				
DAM ENERGY	\$0.00	\$0.00	\$0.00				
DAM LOSSES	\$0.00	\$0.00	\$0.00				
BALANCING ENERGY	\$273.31	\$149.02	\$304.56				
BALANCING LOSSES	\$44.89	\$33.53	\$5.74				
BALANCING CONGESTION	(\$0.33)	\$502.41	\$88.27				
FINANCIAL IMPACT CHARGE	\$0.00	\$0.00	\$0.00				



SETTLEMENTS REPORT  
 May 2023 Settlement Adjustment  
 October 6, 2023

**Settlement Adjustment – Market Costs Delta Analysis**

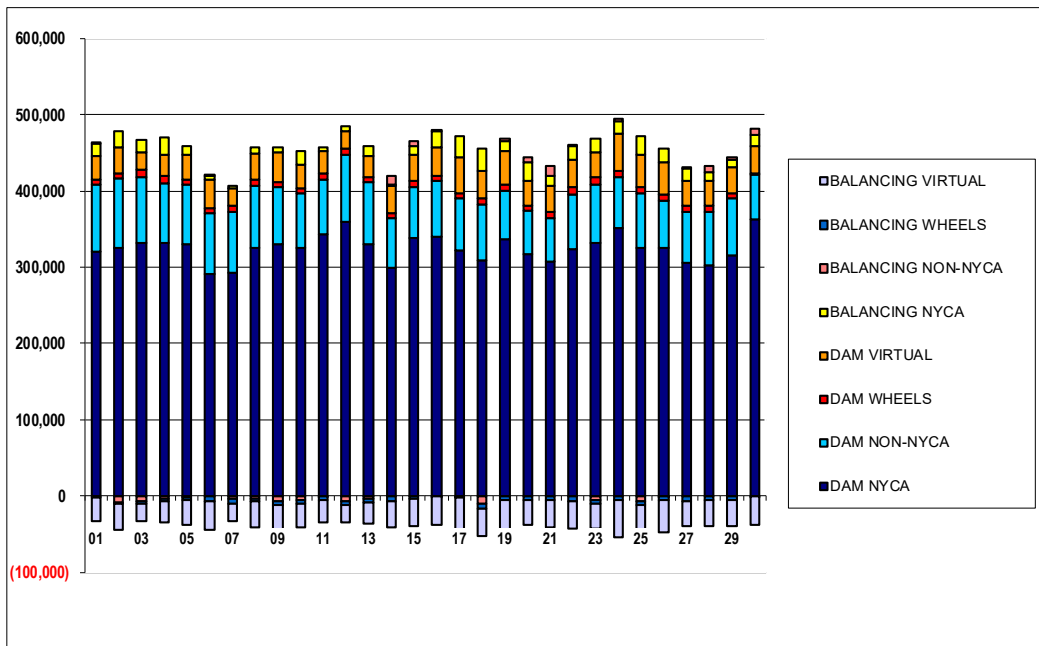
	MONDAY	TUESDAY	WEDNESDAY	THURSDAY	FRIDAY	SATURDAY	SUNDAY
	1	2	3	4	5	6	7
ENERGY	\$27,544.07	\$18,330.91	(\$1,072.02)	(\$435.46)	(\$7,750.73)	(\$7,396.44)	(\$3,942.40)
TRANSMISSION SERVICE	\$948.86	\$197.47	(\$1,325.05)	(\$1,291.15)	(\$1,662.60)	(\$1,751.90)	(\$1,159.22)
UPLIFT	\$127.58	\$1.02	\$0.00	(\$0.08)	\$0.00	\$0.02	\$0.00
RESIDUALS	(\$17,097.77)	(\$9,313.79)	(\$6,146.50)	(\$1,031.86)	(\$182.09)	(\$10.41)	\$261.18
ANCILLARY SERVICES	\$4,215.07	(\$6,292.55)	\$1,055.56	(\$1,793.75)	(\$782.71)	(\$1,008.44)	(\$371.56)
TCC	\$2,112.85	\$7,430.09	(\$1,597.74)	\$1,274.34	(\$144.69)	\$0.00	\$0.00
	8	9	10	11	12	13	14
ENERGY	(\$3,856.89)	(\$2,473.82)	\$4,512.93	\$8,242.89	\$8,383.95	\$10,131.07	\$36,378.64
TRANSMISSION SERVICE	(\$1,149.70)	(\$966.07)	(\$739.32)	(\$169.71)	(\$487.80)	(\$713.81)	\$3,891.30
UPLIFT	(\$0.01)	(\$3.35)	\$0.12	\$0.02	\$0.00	(\$0.27)	(\$0.01)
RESIDUALS	\$359.49	\$106.12	\$657.11	(\$60.94)	\$708.67	\$435.72	\$508.10
ANCILLARY SERVICES	(\$347.14)	(\$166.40)	\$407.99	\$699.75	\$419.41	\$168.73	\$5,418.34
TCC	\$0.00	\$0.00	\$0.00	\$0.00	\$0.00	\$0.00	\$0.00
	15	16	17	18	19	20	21
ENERGY	\$12,638.91	\$14,522.84	(\$1,214.74)	\$8,388.73	\$10,162.54	\$4,699.28	(\$1,859.76)
TRANSMISSION SERVICE	(\$192.19)	\$1,435.83	(\$974.84)	(\$856.17)	\$1,086.49	\$415.79	\$176.94
UPLIFT	(\$0.01)	\$0.01	(\$72.91)	(\$1,973.79)	(\$0.09)	\$0.00	\$2.29
RESIDUALS	(\$25,465.45)	\$2,661.93	\$1,570.92	\$361.99	\$3,762.47	\$3,637.67	\$3,274.48
ANCILLARY SERVICES	\$4,375.67	\$6,705.24	(\$3,278.40)	(\$6,035.84)	(\$486.86)	(\$7,929.03)	(\$7,046.50)
TCC	(\$3,650.71)	(\$4,054.53)	\$3,166.09	\$6,082.70	\$2,696.05	\$9,370.28	\$8,191.93
	22	23	24	25	26	27	28
ENERGY	(\$5,023.99)	(\$6,472.57)	(\$1,851.80)	(\$3,540.24)	\$1,003.89	(\$101.69)	\$553.04
TRANSMISSION SERVICE	(\$1,655.97)	(\$1,617.62)	(\$1,213.60)	(\$1,370.20)	(\$1,252.53)	(\$914.83)	(\$1,021.22)
UPLIFT	\$0.01	\$0.00	(\$0.01)	\$0.01	\$0.01	(\$0.02)	\$0.01
RESIDUALS	\$555.40	\$993.33	\$498.95	\$433.02	\$316.36	\$1,304.26	\$185.06
ANCILLARY SERVICES	(\$6,771.26)	(\$8,685.86)	(\$7,889.25)	(\$2,817.20)	(\$693.07)	(\$1,279.65)	(\$4,517.03)
TCC	\$5,919.80	\$7,816.90	\$7,437.37	\$2,199.29	\$265.84	\$1,154.44	\$4,275.09
	29	30	31				
ENERGY	\$4,955.63	\$3,256.95	\$9,273.20				
TRANSMISSION SERVICE	(\$492.73)	(\$277.49)	(\$149.58)				
UPLIFT	(\$0.01)	\$0.13	(\$0.01)				
RESIDUALS	\$317.87	\$684.96	\$398.57				
ANCILLARY SERVICES	(\$1,549.39)	\$2,708.47	(\$1,589.80)				
TCC	\$1,865.58	(\$2,134.03)	\$2,300.43				



SETTLEMENTS REPORT  
 May 2023 Settlement Adjustment  
 October 6, 2023

**Initial Settlement – Market Supply Analysis**

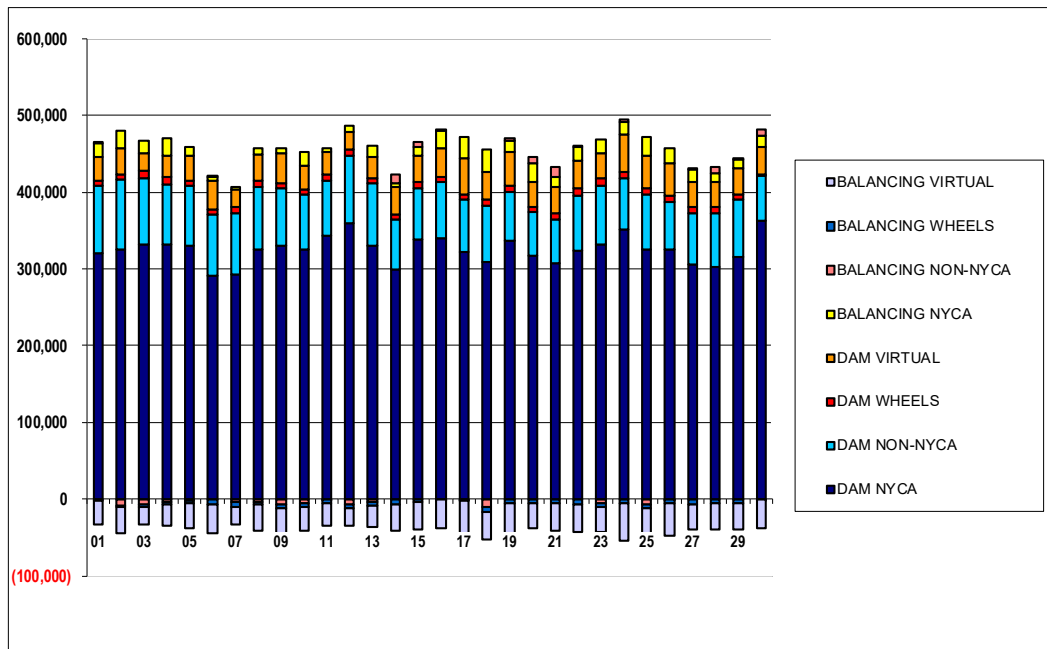
	MONDAY	TUESDAY	WEDNESDAY	THURSDAY	FRIDAY	SATURDAY	SUNDAY
	1	2	3	4	5	6	7
DAM NYCA	320,450	324,917	332,118	332,475	330,665	291,552	293,345
DAM NON-NYCA	87,267	91,352	86,462	77,952	77,399	78,922	79,853
DAM WHEELS	7,300	7,300	9,081	8,944	7,356	7,675	7,847
DAM VIRTUAL	31,714	33,799	22,901	27,864	32,463	37,386	23,049
BALANCING NYCA	16,265	21,909	16,626	22,730	10,971	4,479	2,691
BALANCING NON-NYCA	1,339	(8,700)	(6,607)	(3,858)	(1,679)	1,934	(3,401)
BALANCING WHEELS	(2,103)	(1,135)	(3,715)	(2,320)	(3,952)	(6,758)	(6,515)
BALANCING VIRTUAL	(31,714)	(33,799)	(22,901)	(27,864)	(32,463)	(37,386)	(23,049)
	8	9	10	11	12	13	14
DAM NYCA	324,959	329,969	325,628	343,745	360,398	329,577	299,379
DAM NON-NYCA	82,551	74,522	71,080	71,596	87,576	81,647	64,360
DAM WHEELS	7,650	7,750	7,700	7,675	7,600	7,575	7,800
DAM VIRTUAL	33,735	37,958	29,692	29,145	22,566	27,533	35,120
BALANCING NYCA	8,131	7,002	18,388	5,343	7,424	13,213	1,835
BALANCING NON-NYCA	(3,572)	(7,326)	(5,954)	(290)	(7,367)	(4,243)	10,876
BALANCING WHEELS	(3,515)	(4,573)	(4,913)	(4,402)	(4,756)	(4,313)	(6,327)
BALANCING VIRTUAL	(33,735)	(37,958)	(29,692)	(29,145)	(22,566)	(27,533)	(35,120)
	15	16	17	18	19	20	21
DAM NYCA	338,146	340,269	321,745	309,878	336,712	318,024	306,717
DAM NON-NYCA	67,245	72,847	68,347	73,109	63,256	55,751	58,491
DAM WHEELS	7,420	7,444	7,300	7,700	7,950	7,200	7,325
DAM VIRTUAL	34,404	37,158	47,045	35,871	44,852	32,582	34,842
BALANCING NYCA	11,908	20,293	26,981	28,833	12,471	23,885	11,993
BALANCING NON-NYCA	6,447	2,164	(928)	(10,533)	3,867	6,684	12,814
BALANCING WHEELS	(4,394)	(725)	(605)	(5,440)	(4,556)	(4,605)	(5,714)
BALANCING VIRTUAL	(34,404)	(37,158)	(47,045)	(35,871)	(44,852)	(32,582)	(34,842)
	22	23	24	25	26	27	28
DAM NYCA	323,692	331,537	351,900	325,335	326,007	306,394	302,043
DAM NON-NYCA	71,021	76,530	67,187	71,620	61,253	66,952	70,642
DAM WHEELS	9,975	9,425	7,951	7,649	7,500	7,550	7,400
DAM VIRTUAL	36,976	32,811	48,586	43,697	42,383	33,098	33,957
BALANCING NYCA	16,958	19,208	16,028	23,604	19,378	15,639	11,046
BALANCING NON-NYCA	2,393	(5,184)	3,325	(6,942)	(150)	1,908	8,555
BALANCING WHEELS	(6,262)	(4,629)	(5,867)	(5,468)	(5,736)	(6,687)	(5,815)
BALANCING VIRTUAL	(36,976)	(32,811)	(48,586)	(43,697)	(42,383)	(33,098)	(33,957)
	29	30	31				
DAM NYCA	316,011	362,430	375,194				
DAM NON-NYCA	73,858	59,482	79,896				
DAM WHEELS	7,592	654	9,325				
DAM VIRTUAL	34,059	36,964	27,847				
BALANCING NYCA	10,258	13,460	8,240				
BALANCING NON-NYCA	2,746	8,596	(1,725)				
BALANCING WHEELS	(5,012)	(504)	(6,442)				
BALANCING VIRTUAL	(34,059)	(36,964)	(27,847)				



SETTLEMENTS REPORT  
 May 2023 Settlement Adjustment  
 October 6, 2023

**4-Month Settlement Adjustment – Market Supply Analysis**

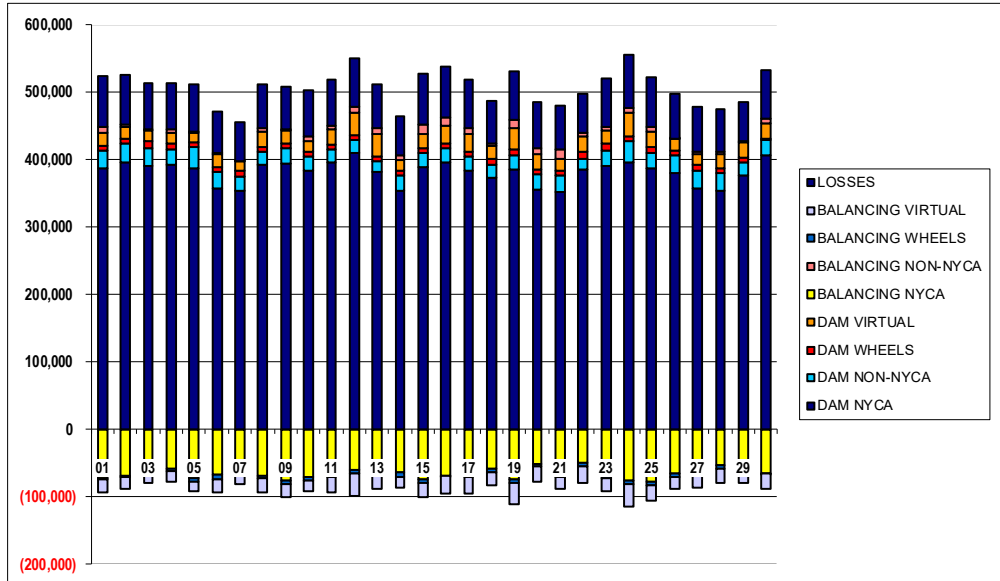
	MONDAY	TUESDAY	WEDNESDAY	THURSDAY	FRIDAY	SATURDAY	SUNDAY
	1	2	3	4	5	6	7
DAM NYCA	320,450	324,917	332,118	332,475	330,665	291,552	293,345
DAM NON-NYCA	87,267	91,352	86,462	77,952	77,399	78,922	79,853
DAM WHEELS	7,300	7,300	9,081	8,944	7,356	7,675	7,847
DAM VIRTUAL	31,714	33,799	22,901	27,864	32,463	37,386	23,049
BALANCING NYCA	17,582	22,737	16,579	22,677	10,694	4,143	2,653
BALANCING NON-NYCA	1,339	(8,700)	(6,607)	(3,858)	(1,679)	1,934	(3,401)
BALANCING WHEELS	(2,103)	(1,135)	(3,715)	(2,320)	(3,952)	(6,758)	(6,515)
BALANCING VIRTUAL	(31,714)	(33,799)	(22,901)	(27,864)	(32,463)	(37,386)	(23,049)
	8	9	10	11	12	13	14
DAM NYCA	324,959	329,969	325,628	343,745	360,398	329,577	299,379
DAM NON-NYCA	82,551	74,522	71,080	71,596	87,576	81,647	64,360
DAM WHEELS	7,650	7,750	7,700	7,675	7,600	7,575	7,800
DAM VIRTUAL	33,735	37,958	29,692	29,145	22,566	27,533	35,120
BALANCING NYCA	8,161	7,063	18,703	5,874	8,001	13,708	5,491
BALANCING NON-NYCA	(3,572)	(7,326)	(5,954)	(290)	(7,367)	(4,243)	10,876
BALANCING WHEELS	(3,515)	(4,573)	(4,913)	(4,402)	(4,756)	(4,313)	(6,327)
BALANCING VIRTUAL	(33,735)	(37,958)	(29,692)	(29,145)	(22,566)	(27,533)	(35,120)
	15	16	17	18	19	20	21
DAM NYCA	338,146	340,269	321,745	309,878	336,712	318,024	306,717
DAM NON-NYCA	67,245	72,847	68,347	73,109	63,256	55,751	58,491
DAM WHEELS	7,420	7,444	7,300	7,700	7,950	7,200	7,325
DAM VIRTUAL	34,404	37,158	47,045	35,871	44,852	32,582	34,842
BALANCING NYCA	12,610	22,289	27,223	29,223	14,148	25,083	12,946
BALANCING NON-NYCA	6,447	2,164	(928)	(10,533)	3,867	6,684	12,814
BALANCING WHEELS	(4,394)	(725)	(605)	(5,440)	(4,556)	(4,605)	(5,714)
BALANCING VIRTUAL	(34,404)	(37,158)	(47,045)	(35,871)	(44,852)	(32,582)	(34,842)
	22	23	24	25	26	27	28
DAM NYCA	323,692	331,537	351,900	325,335	326,007	306,394	302,043
DAM NON-NYCA	71,021	76,530	67,187	71,620	61,253	66,952	70,642
DAM WHEELS	9,975	9,425	7,951	7,649	7,500	7,550	7,400
DAM VIRTUAL	36,976	32,811	48,586	43,697	42,383	33,098	33,957
BALANCING NYCA	16,707	18,914	15,963	23,429	19,448	15,708	11,090
BALANCING NON-NYCA	2,393	(5,184)	3,325	(6,942)	(150)	1,908	8,546
BALANCING WHEELS	(6,262)	(4,629)	(5,867)	(5,468)	(5,736)	(6,687)	(5,615)
BALANCING VIRTUAL	(36,976)	(32,811)	(48,586)	(43,697)	(42,383)	(33,098)	(33,957)
	29	30	31				
DAM NYCA	316,011	362,430	375,194				
DAM NON-NYCA	73,858	59,482	79,896				
DAM WHEELS	7,592	654	9,325				
DAM VIRTUAL	34,059	36,964	27,847				
BALANCING NYCA	10,534	13,901	8,746				
BALANCING NON-NYCA	2,746	8,596	(1,725)				
BALANCING WHEELS	(5,012)	(504)	(6,442)				
BALANCING VIRTUAL	(34,059)	(36,964)	(27,847)				



**SETTLEMENTS REPORT**  
**May 2023 Settlement Adjustment**  
**October 6, 2023**

**Initial Settlement – Market Withdrawals Analysis**

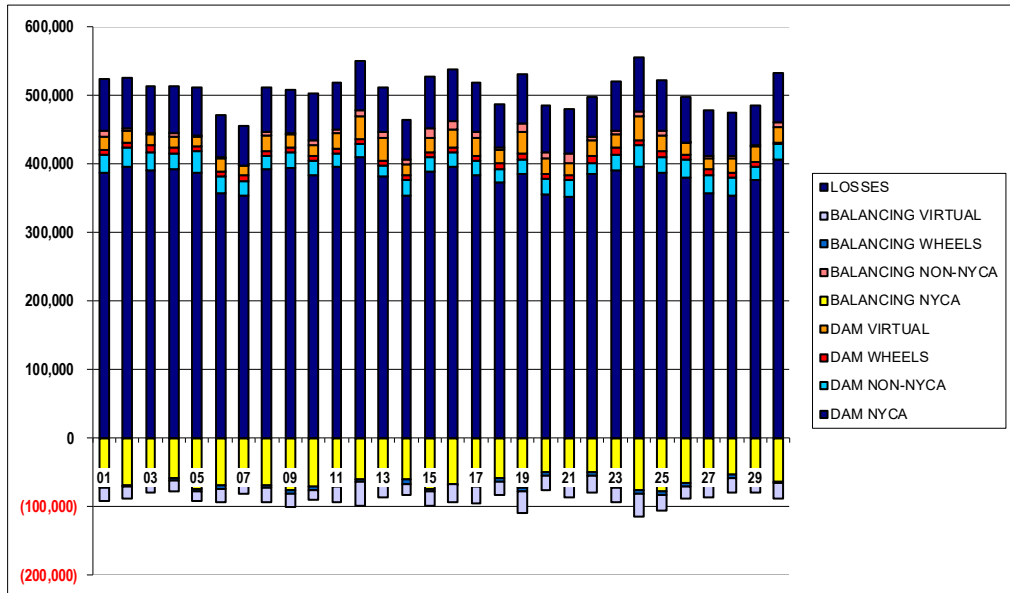
	MONDAY	TUESDAY	WEDNESDAY	THURSDAY	FRIDAY	SATURDAY	SUNDAY
	1	2	3	4	5	6	7
DAM NYCA	386,195	394,677	390,110	391,300	386,207	356,512	352,947
DAM NON-NYCA	26,617	28,994	27,265	22,687	31,227	24,456	22,137
DAM WHEELS	7,300	7,300	9,081	8,944	7,356	7,675	7,847
DAM VIRTUAL	18,483	17,955	15,610	16,099	13,937	18,265	13,834
BALANCING NYCA	(72,430)	(69,818)	(59,996)	(59,096)	(73,344)	(67,938)	(60,284)
BALANCING NON-NYCA	9,758	3,460	2,277	5,402	2,399	3,191	1,037
BALANCING WHEELS	(2,103)	(1,135)	(3,715)	(2,320)	(3,952)	(6,758)	(6,515)
BALANCING VIRTUAL	(18,483)	(17,955)	(15,610)	(16,099)	(13,937)	(18,265)	(13,834)
UFE/LOSSES	75,180	72,166	68,943	69,006	70,868	60,666	56,651
	8	9	10	11	12	13	14
DAM NYCA	392,497	394,352	382,878	394,841	409,464	380,574	354,205
DAM NON-NYCA	18,902	21,581	21,251	19,136	18,679	16,841	21,841
DAM WHEELS	7,650	7,750	7,700	7,675	7,600	7,575	7,800
DAM VIRTUAL	21,631	18,480	14,858	22,898	34,113	32,541	15,828
BALANCING NYCA	(69,078)	(76,909)	(71,294)	(67,031)	(60,287)	(51,038)	(64,384)
BALANCING NON-NYCA	4,875	1,578	7,813	5,822	8,731	8,549	5,845
BALANCING WHEELS	(3,515)	(4,573)	(4,913)	(4,402)	(4,756)	(4,313)	(6,327)
BALANCING VIRTUAL	(21,631)	(18,480)	(14,858)	(22,898)	(34,113)	(32,541)	(15,828)
UFE/LOSSES	64,874	63,565	68,496	67,625	71,443	65,269	58,944
	15	16	17	18	19	20	21
DAM NYCA	388,834	395,725	383,059	372,021	384,256	354,783	352,326
DAM NON-NYCA	20,990	21,147	21,536	20,276	21,700	23,077	24,379
DAM WHEELS	7,420	7,444	7,300	7,700	7,950	7,200	7,325
DAM VIRTUAL	21,124	25,270	25,263	19,903	31,772	22,075	17,138
BALANCING NYCA	(74,891)	(69,071)	(69,743)	(58,448)	(74,998)	(50,958)	(64,739)
BALANCING NON-NYCA	13,422	12,300	9,289	3,376	13,271	9,956	13,494
BALANCING WHEELS	(4,394)	(725)	(605)	(5,440)	(4,556)	(4,605)	(5,714)
BALANCING VIRTUAL	(21,124)	(25,270)	(25,263)	(19,903)	(31,772)	(22,075)	(17,138)
UFE/LOSSES	75,389	75,474	72,004	64,062	72,078	67,485	64,554
	22	23	24	25	26	27	28
DAM NYCA	385,119	390,622	395,645	385,963	380,470	357,069	353,374
DAM NON-NYCA	15,561	22,819	30,875	24,300	24,748	26,572	26,093
DAM WHEELS	9,975	9,425	7,951	7,649	7,500	7,550	7,400
DAM VIRTUAL	23,938	20,391	33,890	23,038	17,910	16,248	21,119
BALANCING NYCA	(49,041)	(67,740)	(75,513)	(77,261)	(65,106)	(62,974)	(53,154)
BALANCING NON-NYCA	5,013	5,342	8,479	7,513	566	4,153	2,696
BALANCING WHEELS	(6,262)	(4,629)	(5,867)	(5,468)	(5,736)	(6,687)	(5,615)
BALANCING VIRTUAL	(23,938)	(20,391)	(33,890)	(23,038)	(17,910)	(16,248)	(21,119)
UFE/LOSSES	57,412	71,048	78,955	73,102	65,809	66,073	63,277
	29	30	31				
DAM NYCA	375,891	406,335	414,507				
DAM NON-NYCA	19,687	23,154	30,674				
DAM WHEELS	7,592	654	9,325				
DAM VIRTUAL	21,746	22,634	30,153				
BALANCING NYCA	(53,301)	(65,068)	(56,462)				
BALANCING NON-NYCA	1,564	6,772	100				
BALANCING WHEELS	(5,012)	(504)	(6,442)				
BALANCING VIRTUAL	(21,746)	(22,634)	(30,153)				
UFE/LOSSES	59,032	72,775	72,787				



SETTLEMENTS REPORT  
 May 2023 Settlement Adjustment  
 October 6, 2023

**4-Month Settlement Adjustment – Market Withdrawals Analysis**

	MONDAY	TUESDAY	WEDNESDAY	THURSDAY	FRIDAY	SATURDAY	SUNDAY
	1	2	3	4	5	6	7
DAM NYCA	386,195	394,677	390,110	391,300	386,207	356,512	352,947
DAM NON-NYCA	26,617	28,994	27,265	22,687	31,227	24,456	22,137
DAM WHEELS	7,300	7,300	9,081	8,944	7,356	7,675	7,847
DAM VIRTUAL	18,483	17,955	15,610	16,099	13,937	18,265	13,834
BALANCING NYCA	(71,100)	(68,979)	(60,014)	(59,141)	(73,608)	(68,240)	(60,290)
BALANCING NON-NYCA	9,758	3,460	2,277	5,402	2,399	3,191	1,037
BALANCING WHEELS	(2,103)	(1,135)	(3,715)	(2,320)	(3,952)	(6,758)	(6,515)
BALANCING VIRTUAL	(18,483)	(17,955)	(15,610)	(16,099)	(13,937)	(18,265)	(13,834)
UFE/LOSSES	75,168	72,155	68,914	68,998	70,854	60,632	56,619
	8	9	10	11	12	13	14
DAM NYCA	392,497	394,352	382,878	394,841	409,464	380,574	354,205
DAM NON-NYCA	18,902	21,581	21,251	19,136	18,679	16,841	21,841
DAM WHEELS	7,650	7,750	7,700	7,675	7,600	7,575	7,800
DAM VIRTUAL	21,631	18,480	14,858	22,898	34,113	32,541	15,828
BALANCING NYCA	(69,028)	(76,824)	(70,953)	(66,484)	(59,729)	(50,579)	(60,749)
BALANCING NON-NYCA	4,875	1,578	7,813	5,822	8,731	8,549	5,845
BALANCING WHEELS	(3,515)	(4,573)	(4,913)	(4,402)	(4,756)	(4,313)	(6,327)
BALANCING VIRTUAL	(21,631)	(18,480)	(14,858)	(22,898)	(34,113)	(32,541)	(15,828)
UFE/LOSSES	64,854	63,541	68,470	67,610	71,464	65,305	58,964
	15	16	17	18	19	20	21
DAM NYCA	388,834	395,725	383,059	372,021	384,256	354,783	352,326
DAM NON-NYCA	20,990	21,147	21,536	20,276	21,700	23,077	24,379
DAM WHEELS	7,420	7,444	7,300	7,700	7,950	7,200	7,325
DAM VIRTUAL	21,124	25,270	25,263	19,903	31,772	22,075	17,138
BALANCING NYCA	(74,228)	(67,067)	(69,483)	(58,037)	(73,339)	(49,780)	(63,816)
BALANCING NON-NYCA	13,422	12,300	9,289	3,376	13,271	9,956	13,494
BALANCING WHEELS	(4,394)	(725)	(605)	(5,440)	(4,556)	(4,605)	(5,714)
BALANCING VIRTUAL	(21,124)	(25,270)	(25,263)	(19,903)	(31,772)	(22,075)	(17,138)
UFE/LOSSES	75,429	75,465	71,987	64,041	72,095	67,506	64,584
	22	23	24	25	26	27	28
DAM NYCA	385,119	390,622	395,645	385,963	380,470	357,069	353,374
DAM NON-NYCA	15,561	22,819	30,875	24,300	24,748	26,572	26,093
DAM WHEELS	9,975	9,425	7,951	7,649	7,500	7,550	7,400
DAM VIRTUAL	23,938	20,391	33,890	23,038	17,910	16,248	21,119
BALANCING NYCA	(49,297)	(68,057)	(75,576)	(77,428)	(65,033)	(62,941)	(53,130)
BALANCING NON-NYCA	5,013	5,342	8,479	7,513	566	4,153	2,696
BALANCING WHEELS	(6,262)	(4,629)	(5,867)	(5,468)	(5,736)	(6,687)	(5,615)
BALANCING VIRTUAL	(23,938)	(20,391)	(33,890)	(23,038)	(17,910)	(16,248)	(21,119)
UFE/LOSSES	57,417	71,070	78,953	73,094	65,807	66,110	63,287
	29	30	31				
DAM NYCA	375,891	406,335	414,507				
DAM NON-NYCA	19,687	23,154	30,674				
DAM WHEELS	7,592	654	9,325				
DAM VIRTUAL	21,746	22,634	30,153				
BALANCING NYCA	(53,050)	(64,415)	(55,730)				
BALANCING NON-NYCA	1,564	6,772	100				
BALANCING WHEELS	(5,012)	(504)	(6,442)				
BALANCING VIRTUAL	(21,746)	(22,634)	(30,153)				
UFE/LOSSES	59,057	72,562	72,560				

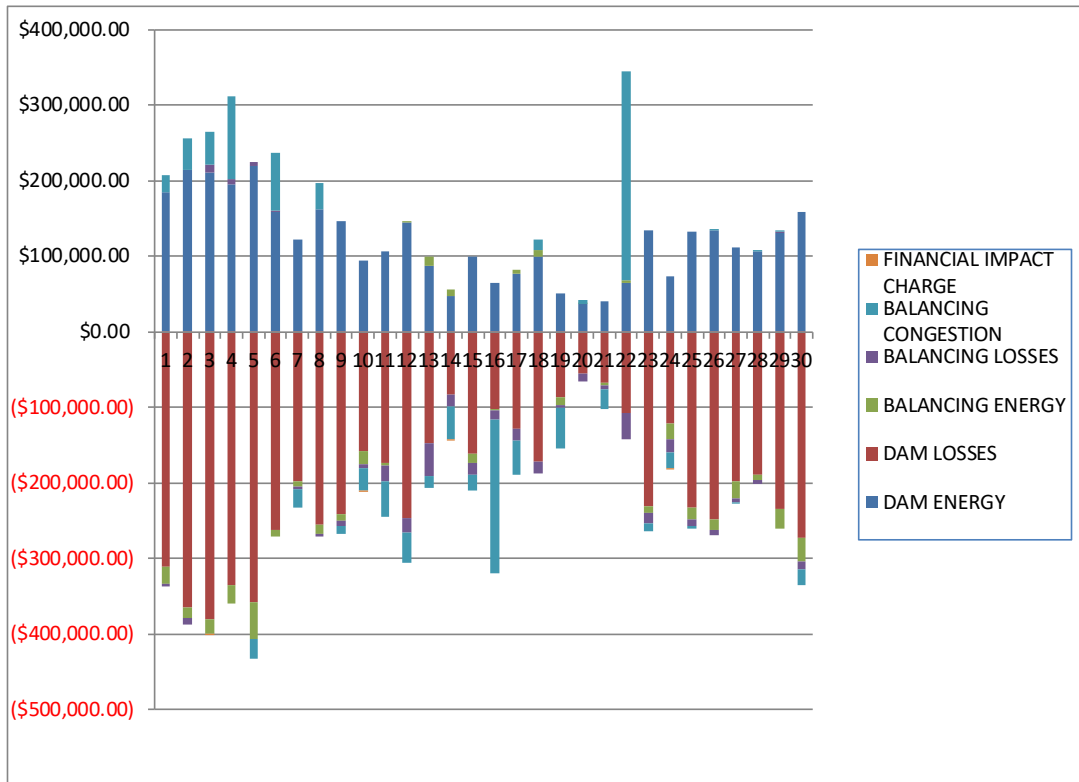




**SETTLEMENTS REPORT**  
**May 2023 Settlement Adjustment**  
**October 6, 2023**

**Initial Settlement – Market Residuals Analysis**

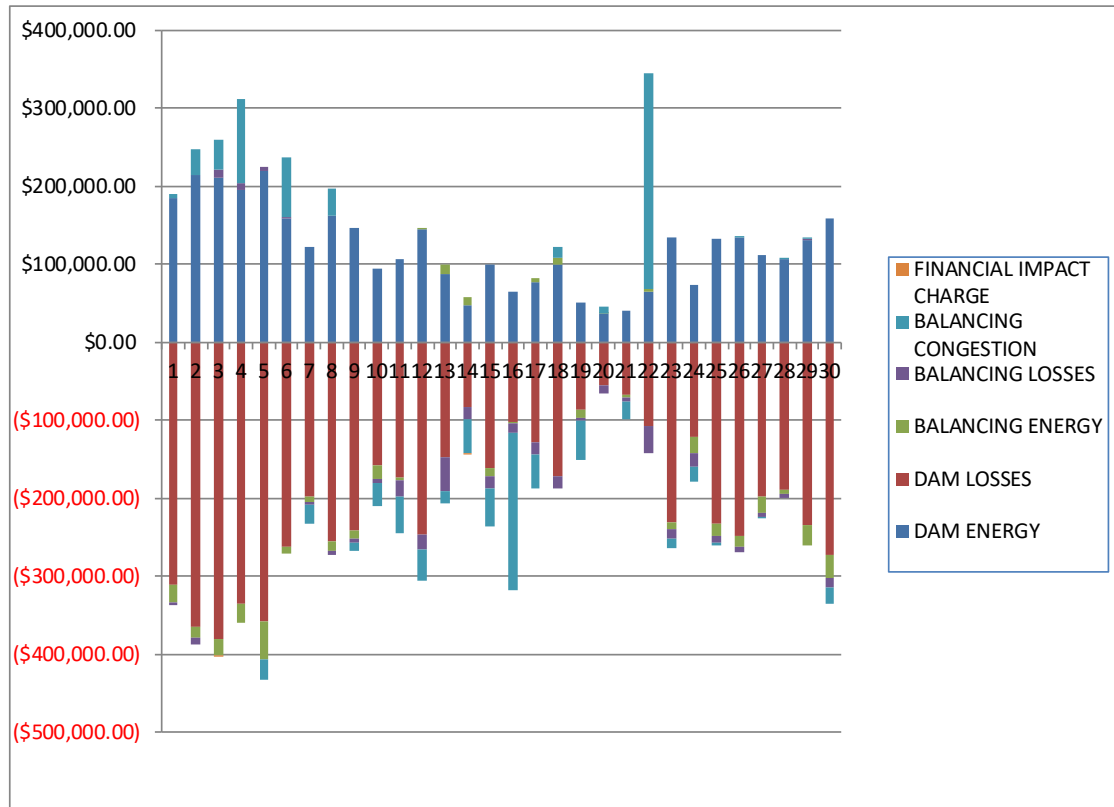
	MONDAY	TUESDAY	WEDNESDAY	THURSDAY	FRIDAY	SATURDAY	SUNDAY
	1	2	3	4	5	6	7
DAM ENERGY	\$184,100.21	\$214,330.81	\$210,875.58	\$194,719.28	\$218,444.10	\$158,691.16	\$121,810.10
DAM LOSSES	(\$311,398.08)	(\$364,329.53)	(\$381,459.91)	(\$335,831.95)	(\$358,179.51)	(\$262,213.29)	(\$197,406.75)
BALANCING ENERGY	(\$22,272.65)	(\$15,162.92)	(\$19,260.23)	(\$23,664.38)	(\$48,865.55)	(\$8,375.09)	(\$8,507.82)
BALANCING LOSSES	(\$3,845.70)	(\$8,254.06)	\$9,731.46	\$7,881.32	\$6,519.83	\$1,959.30	(\$2,194.57)
BALANCING CONGESTION	\$22,512.31	\$41,535.36	\$43,672.76	\$109,027.65	(\$25,652.60)	\$75,887.22	(\$24,833.99)
FINANCIAL IMPACT CHARGE	\$0.00	\$0.00	(\$9.38)	\$0.00	\$0.00	\$0.00	\$0.00
	8	9	10	11	12	13	14
DAM ENERGY	\$161,657.07	\$146,843.45	\$94,089.67	\$106,749.42	\$144,226.73	\$86,792.13	\$47,546.15
DAM LOSSES	(\$255,555.37)	(\$241,972.23)	(\$158,673.89)	(\$174,317.22)	(\$246,325.90)	(\$147,633.65)	(\$83,619.56)
BALANCING ENERGY	(\$11,374.44)	(\$9,258.08)	(\$16,305.88)	(\$3,520.80)	\$1,427.77	\$12,141.95	\$9,016.92
BALANCING LOSSES	(\$5,132.62)	(\$6,738.70)	(\$6,611.13)	(\$19,669.28)	(\$19,129.14)	(\$43,156.83)	(\$14,605.77)
BALANCING CONGESTION	\$34,852.80	(\$9,918.96)	(\$28,624.50)	(\$47,552.41)	(\$40,064.96)	(\$15,529.30)	(\$44,017.73)
FINANCIAL IMPACT CHARGE	\$0.00	\$0.00	(\$310.85)	\$0.00	\$0.00	\$0.00	(\$122.23)
	15	16	17	18	19	20	21
DAM ENERGY	\$99,788.48	\$64,357.11	\$77,049.21	\$98,561.04	\$50,945.64	\$35,879.72	\$40,765.35
DAM LOSSES	(\$161,321.96)	(\$103,395.49)	(\$129,218.22)	(\$171,616.70)	(\$87,545.40)	(\$55,301.83)	(\$67,071.06)
BALANCING ENERGY	(\$11,780.45)	(\$1,602.22)	\$4,224.35	\$8,756.80	(\$10,041.48)	\$943.13	(\$3,799.59)
BALANCING LOSSES	(\$15,899.98)	(\$12,251.57)	(\$14,823.16)	(\$15,633.44)	(\$3,056.66)	(\$10,491.13)	(\$5,696.01)
BALANCING CONGESTION	(\$21,413.82)	(\$203,405.46)	(\$45,297.03)	\$13,842.99	(\$53,830.91)	\$5,549.90	(\$25,181.82)
FINANCIAL IMPACT CHARGE	\$0.00	\$0.00	\$0.00	\$0.00	\$0.00	\$0.00	\$0.00
	22	23	24	25	26	27	28
DAM ENERGY	\$64,180.56	\$134,455.87	\$73,802.40	\$131,775.70	\$134,073.30	\$112,192.10	\$106,658.51
DAM LOSSES	(\$107,445.31)	(\$231,633.48)	(\$121,062.03)	(\$232,382.24)	(\$249,202.98)	(\$198,784.97)	(\$189,583.01)
BALANCING ENERGY	\$3,065.25	(\$8,501.76)	(\$22,307.67)	(\$16,314.57)	(\$13,394.94)	(\$21,389.45)	(\$6,116.05)
BALANCING LOSSES	(\$34,493.80)	(\$13,304.97)	(\$17,266.73)	(\$9,078.66)	(\$7,623.26)	(\$5,572.50)	(\$5,161.31)
BALANCING CONGESTION	\$277,679.02	(\$11,501.89)	(\$19,404.99)	(\$2,920.60)	\$507.51	(\$882.79)	\$10.36
FINANCIAL IMPACT CHARGE	\$0.00	\$0.00	(\$0.16)	\$0.00	\$0.00	\$0.00	\$0.00
	29	30	31				
DAM ENERGY	\$130,042.04	\$158,751.16	\$201,464.93				
DAM LOSSES	(\$235,506.89)	(\$272,523.08)	(\$353,881.47)				
BALANCING ENERGY	(\$24,836.17)	(\$30,959.74)	(\$69,414.88)				
BALANCING LOSSES	\$2,504.16	(\$11,051.22)	\$18,388.99				
BALANCING CONGESTION	\$246.72	(\$21,831.78)	\$32,739.50				
FINANCIAL IMPACT CHARGE	\$0.00	\$0.00	\$0.00				



**SETTLEMENTS REPORT**  
**May 2023 Settlement Adjustment**  
**October 6, 2023**

**4-Month Settlement Adjustment – Market Residuals Analysis**

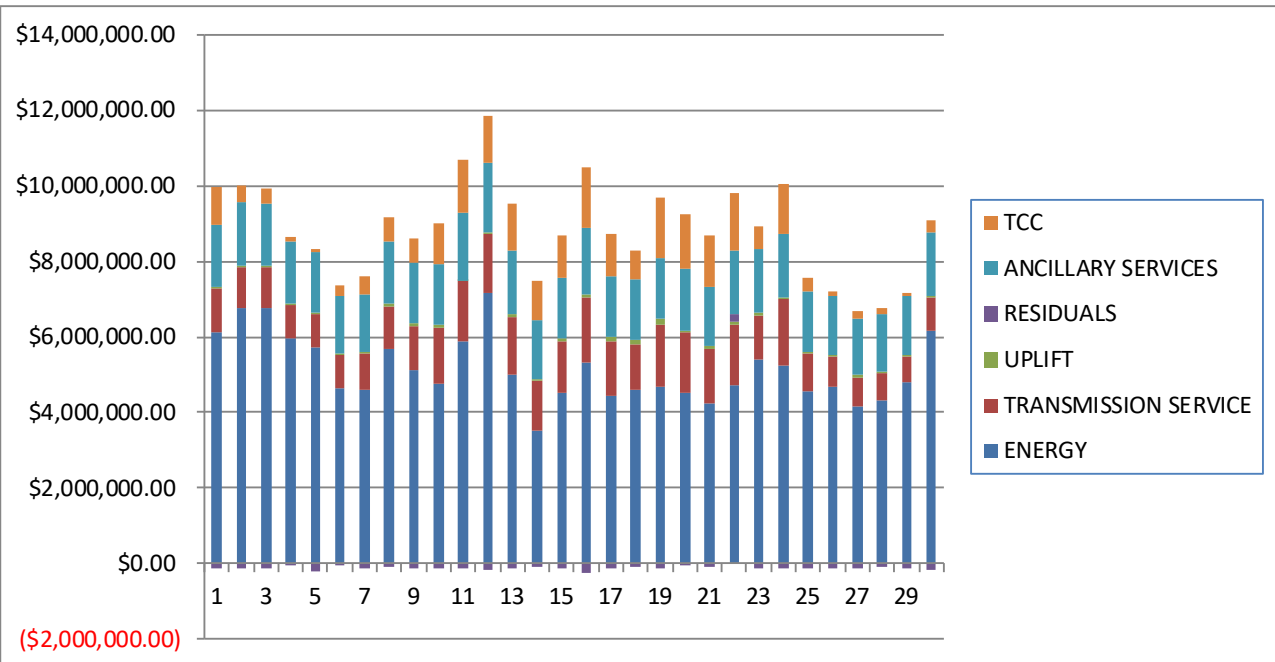
	MONDAY	TUESDAY	WEDNESDAY	THURSDAY	FRIDAY	SATURDAY	SUNDAY
	1	2	3	4	5	6	7
DAM ENERGY	\$184,100.21	\$214,330.80	\$210,875.57	\$194,719.28	\$218,444.10	\$158,691.17	\$121,810.10
DAM LOSSES	(\$311,398.08)	(\$364,329.54)	(\$381,459.91)	(\$335,831.95)	(\$358,179.51)	(\$262,213.29)	(\$197,406.76)
BALANCING ENERGY	(\$22,277.14)	(\$15,397.41)	(\$19,816.26)	(\$23,943.43)	(\$49,141.06)	(\$8,566.26)	(\$8,495.42)
BALANCING LOSSES	(\$4,134.81)	(\$8,492.51)	\$9,801.50	\$8,031.29	\$6,614.86	\$2,008.09	(\$2,144.61)
BALANCING CONGESTION	\$5,708.14	\$32,694.53	\$38,012.31	\$108,124.87	(\$25,654.21)	\$76,019.18	(\$24,635.16)
FINANCIAL IMPACT CHARGE	\$0.00	\$0.00	(\$9.43)	\$0.00	\$0.00	\$0.00	\$0.00
	8	9	10	11	12	13	14
DAM ENERGY	\$161,657.07	\$146,843.45	\$94,089.67	\$106,749.43	\$144,226.73	\$86,792.13	\$47,546.16
DAM LOSSES	(\$255,555.38)	(\$241,972.23)	(\$158,673.89)	(\$174,317.22)	(\$246,325.90)	(\$147,633.64)	(\$83,619.56)
BALANCING ENERGY	(\$11,510.79)	(\$9,358.12)	(\$16,477.50)	(\$3,584.81)	\$1,972.30	\$12,690.18	\$9,355.98
BALANCING LOSSES	(\$5,067.08)	(\$6,660.50)	(\$6,514.40)	(\$19,589.50)	(\$19,035.99)	(\$43,052.54)	(\$14,775.33)
BALANCING CONGESTION	\$35,283.11	(\$9,791.00)	(\$28,203.35)	(\$47,629.13)	(\$39,993.97)	(\$15,746.11)	(\$43,679.20)
FINANCIAL IMPACT CHARGE	\$0.00	\$0.00	\$0.00	\$0.00	\$0.00	\$0.00	(\$122.17)
	15	16	17	18	19	20	21
DAM ENERGY	\$99,788.49	\$64,357.11	\$77,049.21	\$98,561.03	\$50,945.63	\$35,879.73	\$40,765.36
DAM LOSSES	(\$161,321.97)	(\$103,395.49)	(\$129,218.22)	(\$171,616.69)	(\$87,545.41)	(\$55,301.83)	(\$67,071.05)
BALANCING ENERGY	(\$11,108.14)	(\$1,448.07)	\$4,229.51	\$8,834.34	(\$9,988.88)	\$1,121.26	(\$3,640.88)
BALANCING LOSSES	(\$15,956.45)	(\$12,446.03)	(\$14,412.91)	(\$15,643.97)	(\$3,181.03)	(\$10,483.07)	(\$5,524.73)
BALANCING CONGESTION	(\$47,495.11)	(\$200,703.22)	(\$44,141.52)	\$14,137.97	(\$49,996.65)	\$9,001.37	(\$22,237.35)
FINANCIAL IMPACT CHARGE	\$0.00	\$0.00	\$0.00	\$0.00	\$0.00	\$0.00	\$0.00
	22	23	24	25	26	27	28
DAM ENERGY	\$64,180.57	\$134,455.88	\$73,802.39	\$131,775.70	\$134,073.30	\$112,192.10	\$106,658.51
DAM LOSSES	(\$107,445.30)	(\$231,633.48)	(\$121,062.03)	(\$232,382.24)	(\$249,202.98)	(\$198,784.96)	(\$189,583.01)
BALANCING ENERGY	\$3,428.71	(\$7,832.38)	(\$21,998.57)	(\$16,054.42)	(\$13,131.23)	(\$20,155.22)	(\$5,968.36)
BALANCING LOSSES	(\$34,268.42)	(\$13,033.61)	(\$17,084.60)	(\$8,930.29)	(\$7,570.61)	(\$5,502.49)	(\$5,123.94)
BALANCING CONGESTION	\$277,645.56	(\$11,449.31)	(\$19,397.25)	(\$2,796.10)	\$507.51	(\$882.78)	\$10.36
FINANCIAL IMPACT CHARGE	\$0.00	\$0.00	(\$0.17)	\$0.00	\$0.00	\$0.00	\$0.00
	29	30	31				
DAM ENERGY	\$130,042.04	\$158,751.16	\$201,464.93				
DAM LOSSES	(\$235,506.89)	(\$272,523.08)	(\$353,881.47)				
BALANCING ENERGY	(\$24,562.86)	(\$30,810.72)	(\$69,110.32)				
BALANCING LOSSES	\$2,549.05	(\$11,017.69)	\$18,394.73				
BALANCING CONGESTION	\$246.39	(\$21,329.37)	\$32,827.77				
FINANCIAL IMPACT CHARGE	\$0.00	\$0.00	\$0.00				



SETTLEMENTS REPORT  
 May 2023 Settlement Adjustment  
 October 6, 2023

**Initial Settlement – Market Costs Analysis**

	MONDAY	TUESDAY	WEDNESDAY	THURSDAY	FRIDAY	SATURDAY	SUNDAY
	1	2	3	4	5	6	7
ENERGY	\$6,134,808.02	\$6,770,100.63	\$6,760,888.47	\$5,960,551.22	\$5,739,679.50	\$4,649,025.17	\$4,602,623.77
TRANSMISSION SERVICE	\$1,127,961.43	\$1,085,702.38	\$1,083,752.74	\$875,536.70	\$855,972.13	\$864,328.84	\$942,953.99
UPLIFT	\$51,168.44	\$9,426.80	\$40,543.46	\$58,036.44	\$48,358.42	\$35,681.36	\$36,225.42
RESIDUALS	(\$130,903.91)	(\$131,880.34)	(\$136,449.72)	(\$47,868.08)	(\$207,733.73)	(\$34,050.70)	(\$111,133.03)
ANCILLARY SERVICES	\$1,637,577.54	\$1,700,465.56	\$1,652,085.18	\$1,623,872.14	\$1,579,877.87	\$1,513,118.45	\$1,538,405.91
TCC	\$1,008,243.14	\$433,944.10	\$374,777.01	\$135,839.80	\$102,838.51	\$309,838.12	\$498,984.15
	8	9	10	11	12	13	14
ENERGY	\$5,691,708.26	\$5,113,819.13	\$4,779,576.47	\$5,880,823.34	\$7,178,195.32	\$4,997,109.66	\$3,527,099.76
TRANSMISSION SERVICE	\$1,113,271.42	\$1,165,937.33	\$1,456,425.99	\$1,614,086.83	\$1,553,633.43	\$1,526,341.83	\$1,300,247.53
UPLIFT	\$58,329.65	\$70,123.44	\$74,898.35	\$3,584.69	\$37,060.72	\$79,577.28	\$43,945.49
RESIDUALS	(\$75,552.56)	(\$121,044.52)	(\$116,436.58)	(\$138,310.29)	(\$159,865.50)	(\$107,385.70)	(\$85,802.22)
ANCILLARY SERVICES	\$1,662,575.45	\$1,613,807.55	\$1,628,981.74	\$1,788,697.73	\$1,830,757.52	\$1,689,755.03	\$1,550,774.87
TCC	\$632,655.68	\$628,284.84	\$1,069,986.10	\$1,376,734.15	\$1,237,109.74	\$1,229,705.66	\$1,045,870.71
	15	16	17	18	19	20	21
ENERGY	\$4,537,879.48	\$5,306,483.08	\$4,435,737.78	\$4,594,264.05	\$4,661,611.45	\$4,539,538.37	\$4,238,518.20
TRANSMISSION SERVICE	\$1,344,007.16	\$1,730,795.12	\$1,442,407.78	\$1,215,431.51	\$1,659,796.28	\$1,589,941.00	\$1,455,407.59
UPLIFT	\$64,613.17	\$84,843.80	\$111,359.67	\$101,704.33	\$140,495.41	\$45,810.02	\$68,123.66
RESIDUALS	(\$110,627.73)	(\$256,297.63)	(\$108,064.85)	(\$66,089.31)	(\$103,528.81)	(\$23,420.21)	(\$60,983.13)
ANCILLARY SERVICES	\$1,608,681.73	\$1,741,290.70	\$1,628,838.56	\$1,619,229.82	\$1,605,872.10	\$1,605,149.48	\$1,551,264.25
TCC	\$1,132,682.87	\$1,629,992.17	\$1,086,382.27	\$759,088.58	\$1,605,993.57	\$1,460,163.47	\$1,364,587.87
	22	23	24	25	26	27	28
ENERGY	\$4,723,138.82	\$5,394,958.27	\$5,252,527.93	\$4,577,371.79	\$4,670,187.62	\$4,147,254.42	\$4,325,865.09
TRANSMISSION SERVICE	\$1,612,958.33	\$1,172,283.69	\$1,733,408.80	\$982,128.43	\$796,162.07	\$762,074.56	\$710,239.84
UPLIFT	\$77,350.94	\$89,387.17	\$65,763.94	\$49,925.72	\$43,557.54	\$74,853.75	\$51,783.10
RESIDUALS	\$202,985.72	(\$130,486.23)	(\$106,239.18)	(\$128,820.37)	(\$135,640.37)	(\$114,437.61)	(\$94,191.50)
ANCILLARY SERVICES	\$1,681,650.54	\$1,650,049.13	\$1,648,504.03	\$1,588,432.77	\$1,570,166.14	\$1,509,714.50	\$1,527,813.87
TCC	\$1,514,053.66	\$604,651.26	\$1,337,129.37	\$373,931.78	\$126,042.77	\$184,898.76	\$139,622.45
	29	30	31				
ENERGY	\$4,787,940.41	\$6,178,770.39	\$7,135,269.28				
TRANSMISSION SERVICE	\$711,621.42	\$873,789.10	\$1,020,808.18				
UPLIFT	\$28,644.33	\$44,628.34	\$45,724.12				
RESIDUALS	(\$127,550.14)	(\$177,614.66)	(\$170,702.93)				
ANCILLARY SERVICES	\$1,547,270.86	\$1,649,016.53	\$1,692,941.61				
TCC	\$100,718.43	\$317,425.50	\$487,024.67				



SETTLEMENTS REPORT  
 May 2023 Settlement Adjustment  
 October 6, 2023

**4-Month Settlement Adjustment – Market Costs Analysis**

	MONDAY	TUESDAY	WEDNESDAY	THURSDAY	FRIDAY	SATURDAY	SUNDAY
	1	2	3	4	5	6	7
ENERGY	\$6,162,352.09	\$6,788,431.54	\$6,759,816.45	\$5,960,115.76	\$5,731,928.77	\$4,641,628.73	\$4,598,681.37
TRANSMISSION SERVICE	\$1,128,910.29	\$1,085,899.85	\$1,082,427.69	\$874,245.55	\$854,309.53	\$862,576.94	\$941,794.77
UPLIFT	\$51,296.02	\$9,427.82	\$40,543.46	\$58,036.36	\$48,358.42	\$35,681.38	\$36,225.42
RESIDUALS	(\$148,001.68)	(\$141,194.13)	(\$142,596.22)	(\$48,899.94)	(\$207,915.82)	(\$34,061.11)	(\$110,871.85)
ANCILLARY SERVICES	\$1,641,792.61	\$1,694,173.01	\$1,653,140.74	\$1,622,078.39	\$1,579,095.16	\$1,512,110.01	\$1,538,034.35
TCC	\$1,010,355.99	\$441,374.19	\$373,179.27	\$137,114.14	\$102,693.82	\$309,838.12	\$498,984.15
	8	9	10	11	12	13	14
ENERGY	\$5,687,851.37	\$5,111,345.31	\$4,784,089.40	\$5,889,066.23	\$7,186,579.27	\$5,007,240.73	\$3,563,478.40
TRANSMISSION SERVICE	\$1,112,121.72	\$1,164,971.26	\$1,455,686.67	\$1,613,917.12	\$1,553,145.63	\$1,525,628.02	\$1,304,138.83
UPLIFT	\$58,329.64	\$70,120.09	\$74,898.47	\$3,584.71	\$37,060.72	\$79,577.01	\$43,945.48
RESIDUALS	(\$75,193.07)	(\$120,938.40)	(\$115,779.47)	(\$138,371.23)	(\$159,156.83)	(\$106,949.98)	(\$85,294.12)
ANCILLARY SERVICES	\$1,662,228.31	\$1,613,641.15	\$1,629,389.73	\$1,789,397.48	\$1,831,176.93	\$1,689,923.76	\$1,556,193.21
TCC	\$632,655.68	\$628,284.84	\$1,069,986.10	\$1,376,734.15	\$1,237,109.74	\$1,229,705.66	\$1,045,870.71
	15	16	17	18	19	20	21
ENERGY	\$4,550,518.39	\$5,321,005.92	\$4,434,523.04	\$4,602,652.78	\$4,671,773.99	\$4,544,237.65	\$4,236,658.44
TRANSMISSION SERVICE	\$1,343,814.97	\$1,732,230.95	\$1,441,432.94	\$1,214,575.34	\$1,660,882.77	\$1,590,356.79	\$1,455,584.53
UPLIFT	\$64,613.16	\$84,843.81	\$111,286.76	\$99,730.54	\$140,495.32	\$45,810.02	\$68,125.95
RESIDUALS	(\$136,093.18)	(\$253,635.70)	(\$106,493.93)	(\$65,727.32)	(\$99,766.34)	(\$19,782.54)	(\$57,708.65)
ANCILLARY SERVICES	\$1,613,057.40	\$1,747,995.94	\$1,625,560.16	\$1,613,193.98	\$1,605,385.24	\$1,597,220.45	\$1,544,217.75
TCC	\$1,129,032.16	\$1,625,937.64	\$1,089,548.36	\$765,171.28	\$1,608,689.62	\$1,469,533.75	\$1,372,779.80
	22	23	24	25	26	27	28
ENERGY	\$4,718,114.83	\$5,388,485.70	\$5,250,676.13	\$4,573,831.55	\$4,671,191.51	\$4,147,152.73	\$4,326,418.13
TRANSMISSION SERVICE	\$1,611,302.36	\$1,170,666.07	\$1,732,195.20	\$980,758.23	\$794,909.54	\$761,159.73	\$709,218.62
UPLIFT	\$77,350.95	\$89,387.17	\$65,763.93	\$49,925.73	\$43,557.55	\$74,853.73	\$51,783.11
RESIDUALS	\$203,541.12	(\$129,492.90)	(\$105,740.23)	(\$128,387.35)	(\$135,324.01)	(\$113,133.35)	(\$94,006.44)
ANCILLARY SERVICES	\$1,674,879.28	\$1,641,363.27	\$1,640,614.78	\$1,585,615.57	\$1,569,473.07	\$1,508,434.85	\$1,523,296.84
TCC	\$1,519,973.46	\$612,468.16	\$1,344,566.74	\$376,131.07	\$126,308.61	\$186,053.20	\$143,897.54
	29	30	31				
ENERGY	\$4,792,896.04	\$6,182,027.34	\$7,144,542.48				
TRANSMISSION SERVICE	\$711,128.69	\$873,511.61	\$1,020,658.60				
UPLIFT	\$28,644.32	\$44,628.47	\$45,724.11				
RESIDUALS	(\$127,232.27)	(\$176,929.70)	(\$170,304.36)				
ANCILLARY SERVICES	\$1,545,721.47	\$1,651,725.00	\$1,691,351.81				
TCC	\$102,584.01	\$315,291.47	\$489,325.10				

