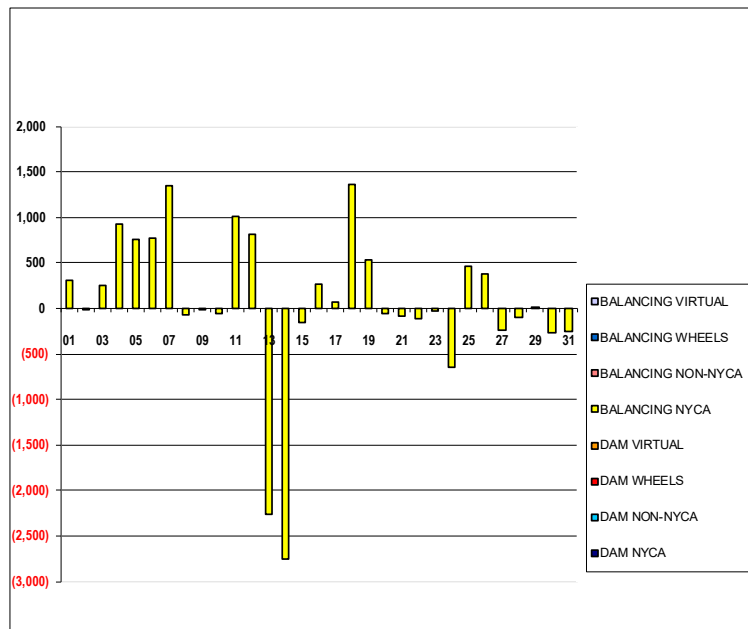


SETTLEMENTS REPORT
 August 2023 Settlement Adjustment
 January 8, 2024

Settlement Adjustment – Market Supply Delta Analysis

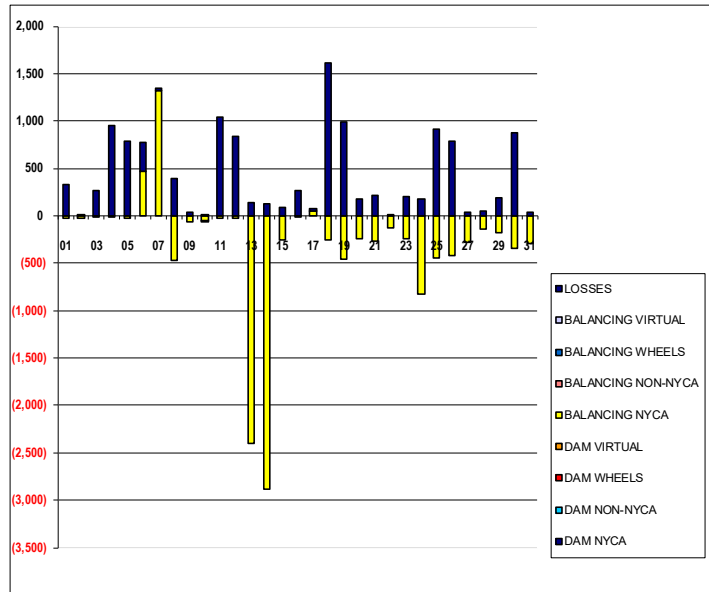
	MONDAY	TUESDAY	WEDNESDAY	THURSDAY	FRIDAY	SATURDAY	SUNDAY
		1	2	3	4	5	6
DAM NYCA		0	0	0	0	0	0
DAM NON-NYCA		0	0	0	0	0	0
DAM WHEELS		0	0	0	0	0	0
DAM VIRTUAL		0	0	0	0	0	0
BALANCING NYCA		302	(12)	251	930	756	777
BALANCING NON-NYCA		0	0	0	0	0	0
BALANCING WHEELS		0	0	0	0	0	0
BALANCING VIRTUAL		0	0	0	0	0	0
	7	8	9	10	11	12	13
DAM NYCA	0	0	0	0	0	0	0
DAM NON-NYCA	0	0	0	0	0	0	0
DAM WHEELS	0	0	0	0	0	0	0
DAM VIRTUAL	0	0	0	0	0	0	0
BALANCING NYCA	1,348	(75)	(20)	(51)	1,014	818	(2,258)
BALANCING NON-NYCA	0	0	0	0	0	0	0
BALANCING WHEELS	0	0	0	0	0	0	0
BALANCING VIRTUAL	0	0	0	0	0	0	0
	14	15	16	17	18	19	20
DAM NYCA	0	0	0	0	0	0	0
DAM NON-NYCA	0	0	0	0	0	0	0
DAM WHEELS	0	0	0	0	0	0	0
DAM VIRTUAL	0	0	0	0	0	0	0
BALANCING NYCA	(2,756)	(163)	268	74	1,368	535	(63)
BALANCING NON-NYCA	0	0	0	0	0	0	0
BALANCING WHEELS	0	0	0	0	0	0	0
BALANCING VIRTUAL	0	0	0	0	0	0	0
	21	22	23	24	25	26	27
DAM NYCA	0	0	0	0	0	0	0
DAM NON-NYCA	0	0	0	0	0	0	0
DAM WHEELS	0	0	0	0	0	0	0
DAM VIRTUAL	0	0	0	0	0	0	0
BALANCING NYCA	(85)	(116)	(35)	(649)	466	371	(241)
BALANCING NON-NYCA	0	0	0	0	0	0	0
BALANCING WHEELS	0	0	0	0	0	0	0
BALANCING VIRTUAL	0	0	0	0	0	0	0
	28	29	30	31			
DAM NYCA	0	0	0	0			
DAM NON-NYCA	0	0	0	0			
DAM WHEELS	0	0	0	0			
DAM VIRTUAL	0	0	0	0			
BALANCING NYCA	(94)	17	(273)	(258)			
BALANCING NON-NYCA	0	0	0	0			
BALANCING WHEELS	0	0	0	0			
BALANCING VIRTUAL	0	0	0	0			



SETTLEMENTS REPORT
 August 2023 Settlement Adjustment
 January 8, 2024

Settlement Adjustment – Market Withdrawals Delta Analysis

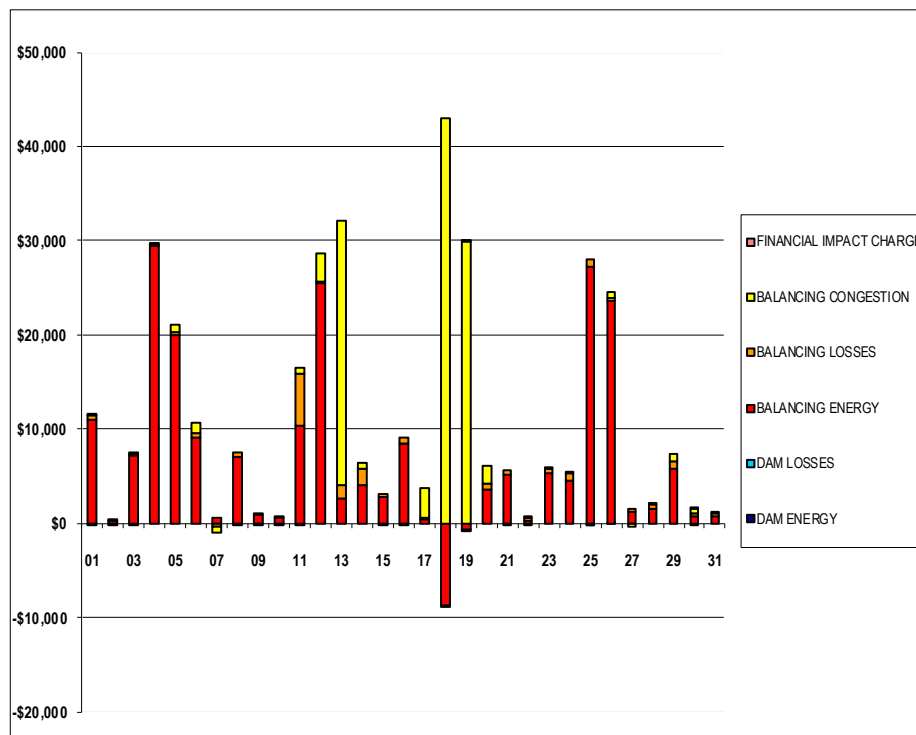
	MONDAY	TUESDAY	WEDNESDAY	THURSDAY	FRIDAY	SATURDAY	SUNDAY
		1	2	3	4	5	6
DAM NYCA		0	0	0	0	0	0
DAM NON-NYCA		0	0	0	0	0	0
DAM WHEELS		0	0	0	0	0	0
DAM VIRTUAL		0	0	0	0	0	0
BALANCING NYCA		(26)	(21)	(10)	(18)	(31)	474
BALANCING NON-NYCA		0	0	0	0	0	0
BALANCING WHEELS		0	0	0	0	0	0
BALANCING VIRTUAL		0	0	0	0	0	0
UFE/LOSSES		328	9	261	947	787	303
	7	8	9	10	11	12	13
DAM NYCA	0	0	0	0	0	0	0
DAM NON-NYCA	0	0	0	0	0	0	0
DAM WHEELS	0	0	0	0	0	0	0
DAM VIRTUAL	0	0	0	0	0	0	0
BALANCING NYCA	1,319	(466)	(61)	(55)	(23)	(21)	(2,395)
BALANCING NON-NYCA	0	0	0	(10)	0	0	0
BALANCING WHEELS	0	0	0	0	0	0	0
BALANCING VIRTUAL	0	0	0	0	0	0	0
UFE/LOSSES	29	391	41	14	1,037	839	137
	14	15	16	17	18	19	20
DAM NYCA	0	0	0	0	0	0	0
DAM NON-NYCA	0	0	0	0	0	0	0
DAM WHEELS	0	0	0	0	0	0	0
DAM VIRTUAL	0	0	0	0	0	0	0
BALANCING NYCA	(2,888)	(254)	(3)	56	(251)	(459)	(242)
BALANCING NON-NYCA	0	0	0	0	0	0	0
BALANCING WHEELS	0	0	0	0	0	0	0
BALANCING VIRTUAL	0	0	0	0	0	0	0
UFE/LOSSES	132	92	271	18	1,618	994	180
	21	22	23	24	25	26	27
DAM NYCA	0	0	0	0	0	0	0
DAM NON-NYCA	0	0	0	0	0	0	0
DAM WHEELS	0	0	0	0	0	0	0
DAM VIRTUAL	0	0	0	0	0	0	0
BALANCING NYCA	(267)	(128)	(239)	(830)	(442)	(418)	(283)
BALANCING NON-NYCA	0	0	0	0	0	0	0
BALANCING WHEELS	0	0	0	0	0	0	0
BALANCING VIRTUAL	0	0	0	0	0	0	0
UFE/LOSSES	216	12	204	181	908	789	42
	28	29	30	31			
DAM NYCA	0	0	0	0			
DAM NON-NYCA	0	0	0	0			
DAM WHEELS	0	0	0	0			
DAM VIRTUAL	0	0	0	0			
BALANCING NYCA	(147)	(173)	(337)	(291)			
BALANCING NON-NYCA	0	0	0	0			
BALANCING WHEELS	0	0	0	0			
BALANCING VIRTUAL	0	0	0	0			
UFE/LOSSES	52	190	874	33			



SETTLEMENTS REPORT
 August 2023 Settlement Adjustment
 January 8, 2024

Settlement Adjustment – Market Residuals Delta Analysis

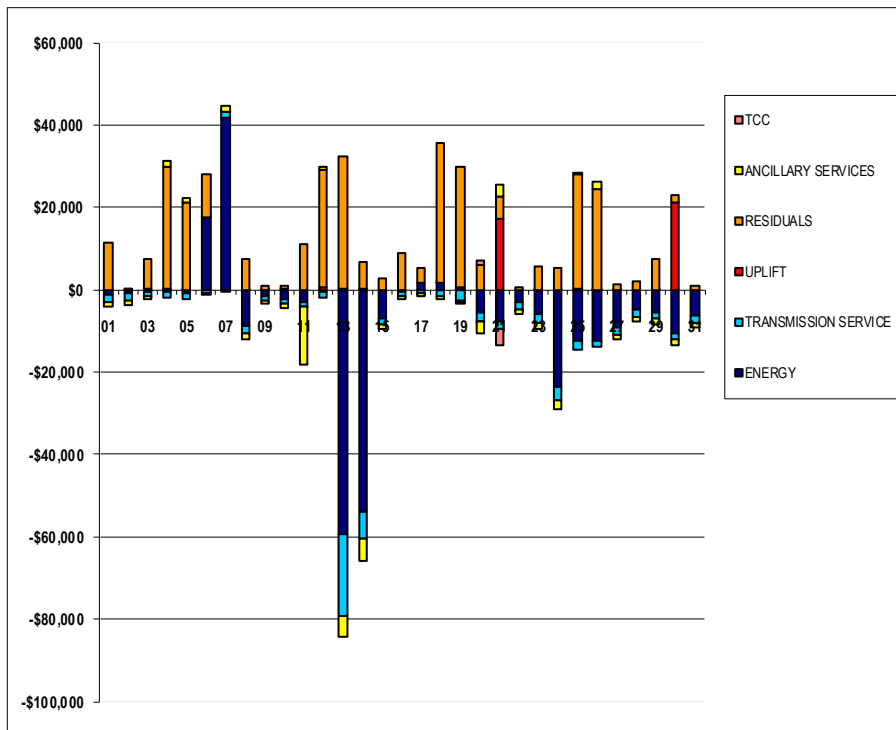
	MONDAY	TUESDAY	WEDNESDAY	THURSDAY	FRIDAY	SATURDAY	SUNDAY
		1	2	3	4	5	6
DAM ENERGY		\$0.00	\$0.00	(\$0.01)	\$0.00	\$0.00	\$0.00
DAM LOSSES		\$0.00	\$0.00	\$0.00	\$0.00	\$0.00	\$0.00
BALANCING ENERGY		\$10,991.71	\$190.18	\$7,117.24	\$29,351.04	\$20,041.09	\$9,069.94
BALANCING LOSSES		\$504.63	(\$28.72)	\$239.33	\$246.98	\$185.51	\$445.80
BALANCING CONGESTION		(\$38.93)	\$38.65	\$123.72	\$7.25	\$815.19	\$1,076.85
FINANCIAL IMPACT CHARGE		\$0.09	\$0.00	\$0.00	\$0.00	\$0.00	\$0.00
	7	8	9	10	11	12	13
DAM ENERGY	\$0.00	\$0.01	\$0.01	\$0.00	\$0.00	\$0.00	\$0.01
DAM LOSSES	\$0.00	\$0.00	\$0.00	\$0.01	(\$0.01)	\$0.01	\$0.00
BALANCING ENERGY	\$642.63	\$7,052.55	\$939.35	\$538.01	\$10,321.32	\$25,484.61	\$2,585.20
BALANCING LOSSES	(\$403.46)	\$487.40	\$89.32	(\$1.90)	\$5,613.25	\$95.74	\$1,414.88
BALANCING CONGESTION	(\$649.13)	(\$67.46)	(\$10.36)	\$27.88	\$573.93	\$3,101.75	\$28,183.76
FINANCIAL IMPACT CHARGE	\$0.00	\$0.00	\$0.00	\$0.00	\$0.00	\$0.00	\$0.00
	14	15	16	17	18	19	20
DAM ENERGY	\$0.00	\$0.00	\$0.00	\$0.00	\$0.00	\$0.00	\$0.00
DAM LOSSES	\$0.00	\$0.00	\$0.00	\$0.01	\$0.00	\$0.00	\$0.00
BALANCING ENERGY	\$4,087.94	\$2,735.97	\$8,415.36	\$404.86	(\$8,779.84)	(\$723.72)	\$3,510.62
BALANCING LOSSES	\$1,726.25	\$402.60	\$600.69	\$109.10	(\$135.41)	(\$77.25)	\$667.32
BALANCING CONGESTION	\$626.37	(\$288.52)	(\$4.94)	\$3,172.40	\$42,983.78	\$29,946.85	\$1,911.98
FINANCIAL IMPACT CHARGE	\$0.00	\$0.00	\$0.00	\$0.00	\$0.00	\$0.06	\$0.00
	21	22	23	24	25	26	27
DAM ENERGY	\$0.00	(\$0.01)	\$0.00	\$0.00	\$0.00	\$0.01	\$0.00
DAM LOSSES	\$0.00	\$0.00	\$0.00	\$0.00	(\$0.01)	\$0.01	\$0.01
BALANCING ENERGY	\$5,129.19	\$276.58	\$5,325.04	\$4,568.08	\$27,184.43	\$23,664.71	\$1,229.41
BALANCING LOSSES	\$530.61	\$234.02	\$428.34	\$756.15	\$765.16	\$287.45	\$355.75
BALANCING CONGESTION	(\$3.58)	\$50.00	\$25.75	\$25.71	(\$90.58)	\$572.79	(\$310.91)
FINANCIAL IMPACT CHARGE	\$0.00	\$0.00	\$0.00	\$0.00	\$0.00	\$0.00	\$0.00
	28	29	30	31			
DAM ENERGY	\$0.01	\$0.01	(\$0.01)	\$0.00			
DAM LOSSES	\$0.00	\$0.00	\$0.01	\$0.01			
BALANCING ENERGY	\$1,559.48	\$5,835.37	\$678.44	\$800.54			
BALANCING LOSSES	\$410.89	\$653.00	\$322.23	\$178.99			
BALANCING CONGESTION	\$38.58	\$847.92	\$582.19	\$32.93			
FINANCIAL IMPACT CHARGE	\$0.00	\$0.00	\$0.04	\$0.00			



SETTLEMENTS REPORT
August 2023 Settlement Adjustment
January 8, 2024

Settlement Adjustment – Market Costs Delta Analysis

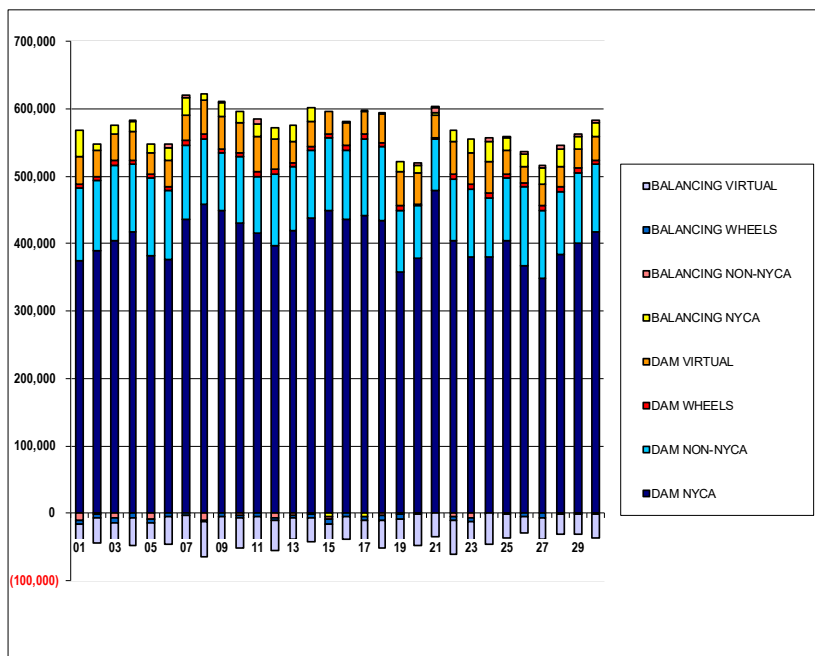
	MONDAY	TUESDAY	WEDNESDAY	THURSDAY	FRIDAY	SATURDAY	SUNDAY
		1	2	3	4	5	6
ENERGY		(\$1,092.27)	(\$1,038.14)	(\$333.04)	(\$567.92)	(\$892.00)	\$17,420.94
TRANSMISSION SERVICE		(\$1,867.01)	(\$1,627.33)	(\$1,250.97)	(\$1,401.40)	(\$1,363.37)	(\$903.31)
UPLIFT		\$0.00	\$31.64	\$98.69	\$71.75	\$35.27	\$115.70
RESIDUALS		\$11,457.50	\$200.11	\$7,480.28	\$29,605.27	\$21,041.79	\$10,592.59
ANCILLARY SERVICES		(\$1,289.79)	(\$1,180.35)	(\$590.46)	\$1,532.41	\$1,265.12	(\$423.01)
TCC		\$0.00	\$0.00	\$0.00	\$0.00	\$0.00	\$0.00
	7	8	9	10	11	12	13
ENERGY	\$41,760.51	(\$8,917.07)	(\$1,663.21)	(\$2,256.42)	(\$2,912.07)	(\$598.14)	(\$59,316.66)
TRANSMISSION SERVICE	\$1,380.15	(\$1,648.33)	(\$904.39)	(\$1,265.12)	(\$1,145.83)	(\$1,456.83)	(\$19,857.85)
UPLIFT	\$62.08	\$0.79	\$10.63	\$211.47	(\$111.97)	\$530.94	\$167.79
RESIDUALS	(\$409.96)	\$7,472.50	\$1,018.32	\$564.00	\$10,952.32	\$28,682.11	\$32,183.85
ANCILLARY SERVICES	\$1,459.57	(\$1,350.85)	(\$669.82)	(\$923.87)	(\$14,194.52)	\$589.12	(\$5,036.01)
TCC	\$0.00	\$0.00	\$0.00	\$0.00	\$0.00	\$0.00	\$0.00
	14	15	16	17	18	19	20
ENERGY	(\$53,861.56)	(\$6,921.09)	(\$331.19)	\$1,764.72	\$1,577.59	\$633.48	(\$5,542.26)
TRANSMISSION SERVICE	(\$6,615.83)	(\$1,406.56)	(\$1,185.83)	(\$921.43)	(\$1,561.61)	(\$2,668.18)	(\$2,347.93)
UPLIFT	\$193.56	\$1.22	(\$20.51)	(\$0.93)	\$89.84	(\$199.69)	(\$7.07)
RESIDUALS	\$6,440.56	\$2,850.05	\$9,011.11	\$3,686.37	\$34,068.53	\$29,145.94	\$6,089.92
ANCILLARY SERVICES	(\$5,521.69)	(\$1,106.69)	(\$842.49)	(\$656.98)	(\$828.92)	(\$41.72)	(\$2,672.94)
TCC	\$0.00	\$0.00	\$0.00	\$0.00	\$0.00	\$0.00	\$885.66
	21	22	23	24	25	26	27
ENERGY	(\$7,772.15)	(\$3,028.78)	(\$6,086.67)	(\$23,699.37)	(\$12,534.72)	(\$12,265.61)	(\$9,046.58)
TRANSMISSION SERVICE	(\$1,658.71)	(\$1,652.05)	(\$1,884.87)	(\$3,010.27)	(\$1,961.28)	(\$1,748.84)	(\$1,757.58)
UPLIFT	\$17,082.52	(\$0.07)	\$2.34	\$0.08	\$150.78	\$41.42	\$0.01
RESIDUALS	\$5,656.22	\$560.59	\$5,779.13	\$5,349.94	\$27,859.00	\$24,524.97	\$1,274.26
ANCILLARY SERVICES	\$2,690.59	(\$1,240.97)	(\$1,441.37)	(\$2,465.12)	\$29.76	\$1,763.88	(\$1,366.08)
TCC	(\$3,979.52)	\$0.00	\$0.00	\$0.00	\$0.00	\$0.00	\$0.00
	28	29	30	31			
ENERGY	(\$4,930.95)	(\$5,556.52)	(\$10,601.88)	(\$6,385.70)			
TRANSMISSION SERVICE	(\$1,691.88)	(\$1,615.45)	(\$1,540.19)	(\$1,573.56)			
UPLIFT	(\$0.01)	\$9.33	\$21,308.51	(\$19.05)			
RESIDUALS	\$2,008.96	\$7,336.30	\$1,582.90	\$1,012.47			
ANCILLARY SERVICES	(\$1,272.83)	(\$1,222.95)	(\$1,500.29)	(\$1,233.30)			
TCC	\$0.00	\$0.00	\$0.00	\$0.00			



SETTLEMENTS REPORT
August 2023 Settlement Adjustment
January 8, 2024

Initial Settlement – Market Supply Analysis

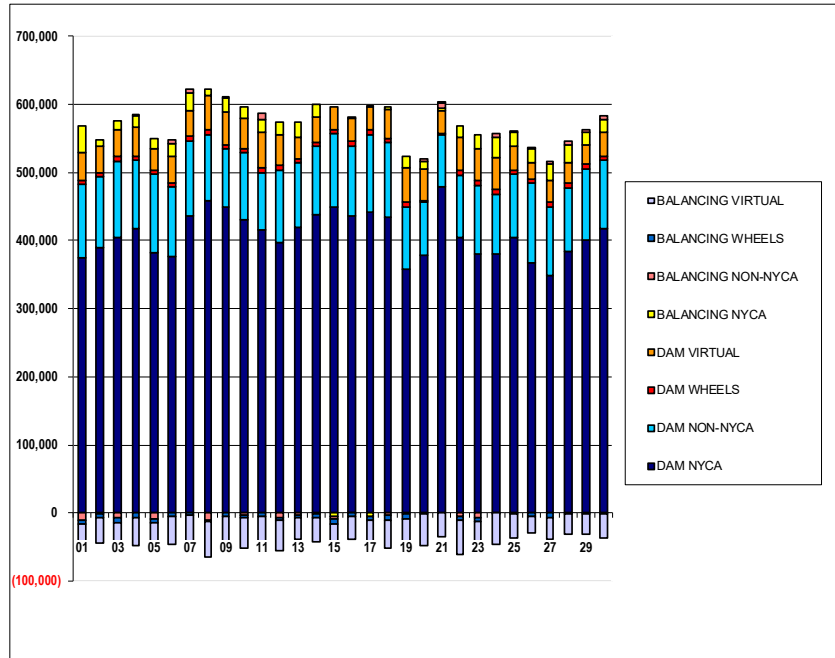
	MONDAY	TUESDAY	WEDNESDAY	THURSDAY	FRIDAY	SATURDAY	SUNDAY
		1	2	3	4	5	6
DAM NYCA		373,997	389,473	404,953	416,772	382,254	375,905
DAM NON-NYCA		108,570	104,280	112,049	101,520	114,966	102,379
DAM WHEELS		6,408	6,408	7,058	6,408	6,408	6,408
DAM VIRTUAL		39,758	37,689	38,817	41,093	32,257	39,881
BALANCING NYCA		39,339	10,521	13,108	16,015	12,762	17,111
BALANCING NON-NYCA		(10,512)	(646)	(7,850)	213	(8,970)	5,698
BALANCING WHEELS		(5,974)	(6,041)	(6,283)	(6,172)	(5,665)	(5,593)
BALANCING VIRTUAL		(39,758)	(37,689)	(38,817)	(41,093)	(32,257)	(39,881)
	7	8	9	10	11	12	13
DAM NYCA	436,035	457,979	449,108	430,978	416,748	398,079	420,161
DAM NON-NYCA	110,403	97,846	85,810	97,722	83,562	106,194	93,757
DAM WHEELS	6,408	6,408	6,408	6,408	6,408	6,408	6,458
DAM VIRTUAL	38,812	51,356	47,417	45,446	51,675	44,682	32,320
BALANCING NYCA	24,479	9,449	19,987	15,518	19,183	17,399	23,062
BALANCING NON-NYCA	5,065	(10,201)	2,688	(3,250)	8,168	(6,609)	(2,744)
BALANCING WHEELS	(3,150)	(2,784)	(5,340)	(3,734)	(5,261)	(4,215)	(4,160)
BALANCING VIRTUAL	(38,812)	(51,356)	(47,417)	(45,446)	(51,675)	(44,682)	(32,320)
	14	15	16	17	18	19	20
DAM NYCA	437,743	450,271	436,302	442,433	435,118	358,564	379,030
DAM NON-NYCA	100,864	106,758	103,053	113,778	109,243	90,926	78,104
DAM WHEELS	6,408	6,458	7,233	6,433	6,408	7,398	1,320
DAM VIRTUAL	36,190	33,675	32,656	33,939	41,299	49,889	46,212
BALANCING NYCA	21,735	(4,518)	2,286	(5,225)	3,407	15,828	12,265
BALANCING NON-NYCA	(1,846)	(4,929)	(123)	1,018	(3,712)	(618)	3,144
BALANCING WHEELS	(4,762)	(6,050)	(5,506)	(6,166)	(6,408)	(7,398)	(1,320)
BALANCING VIRTUAL	(36,190)	(33,675)	(32,656)	(33,939)	(41,299)	(49,889)	(46,212)
	21	22	23	24	25	26	27
DAM NYCA	478,657	404,716	380,609	381,301	405,154	366,891	349,368
DAM NON-NYCA	77,660	91,704	101,239	87,533	92,231	117,362	100,339
DAM WHEELS	294	7,148	6,408	6,408	6,408	6,638	6,524
DAM VIRTUAL	34,491	48,833	45,913	46,222	34,243	24,496	31,643
BALANCING NYCA	3,769	15,988	20,778	30,364	20,214	18,414	24,655
BALANCING NON-NYCA	8,031	(4,443)	(6,846)	5,796	1,777	2,731	4,269
BALANCING WHEELS	596	(6,948)	(5,608)	(136)	(1,686)	(5,535)	(6,502)
BALANCING VIRTUAL	(34,491)	(48,833)	(45,913)	(46,222)	(34,243)	(24,496)	(31,643)
	28	29	30	31			
DAM NYCA	383,246	400,695	417,077	372,156			
DAM NON-NYCA	94,771	104,705	101,005	88,857			
DAM WHEELS	6,408	6,408	6,508	6,433			
DAM VIRTUAL	29,691	29,165	34,975	38,775			
BALANCING NYCA	25,745	18,908	19,530	10,775			
BALANCING NON-NYCA	6,786	2,554	4,827	(522)			
BALANCING WHEELS	(2,136)	(2,011)	(2,236)	(5,506)			
BALANCING VIRTUAL	(29,691)	(29,165)	(34,975)	(38,775)			



SETTLEMENTS REPORT
August 2023 Settlement Adjustment
January 8, 2024

4-Month Settlement Adjustment – Market Supply Analysis

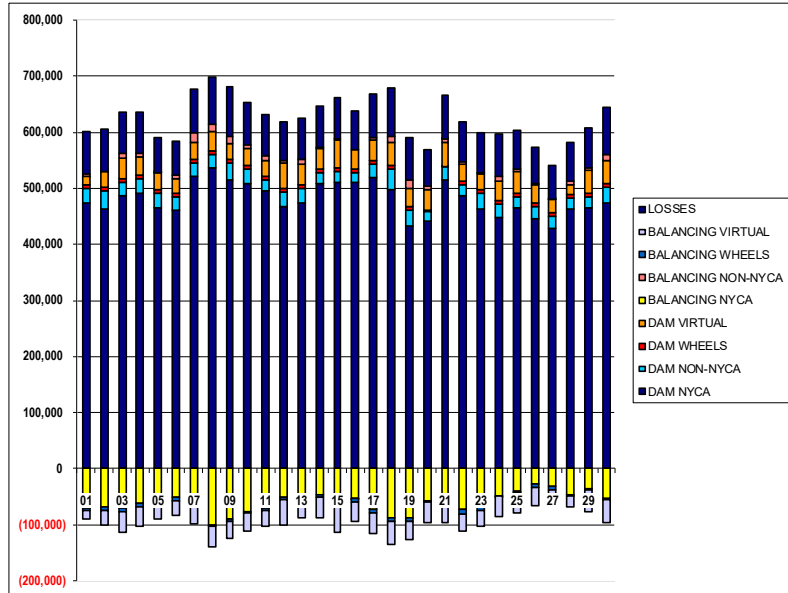
	MONDAY	TUESDAY	WEDNESDAY	THURSDAY	FRIDAY	SATURDAY	SUNDAY
		1	2	3	4	5	6
DAM NYCA		373,997	389,473	404,953	416,772	382,254	375,905
DAM NON-NYCA		108,570	104,280	112,049	101,520	114,966	102,379
DAM WHEELS		6,408	6,408	7,058	6,408	6,408	6,408
DAM VIRTUAL		39,758	37,689	38,817	41,093	32,257	39,881
BALANCING NYCA		39,641	10,509	13,359	16,944	13,518	17,888
BALANCING NON-NYCA		(10,512)	(646)	(7,850)	213	(8,970)	5,698
BALANCING WHEELS		(5,974)	(6,041)	(6,283)	(6,172)	(5,665)	(5,593)
BALANCING VIRTUAL		(39,758)	(37,689)	(38,817)	(41,093)	(32,257)	(39,881)
	7	8	9	10	11	12	13
DAM NYCA	436,035	457,979	449,108	430,978	416,748	398,079	420,161
DAM NON-NYCA	110,403	97,846	85,810	97,722	83,562	106,194	93,757
DAM WHEELS	6,408	6,408	6,408	6,408	6,408	6,408	6,458
DAM VIRTUAL	38,812	51,356	47,417	45,446	51,675	44,682	32,320
BALANCING NYCA	25,827	9,374	19,967	15,467	20,197	18,217	20,803
BALANCING NON-NYCA	5,065	(10,201)	2,688	(3,250)	8,168	(6,609)	(2,744)
BALANCING WHEELS	(3,150)	(2,784)	(5,340)	(3,734)	(5,261)	(4,215)	(4,160)
BALANCING VIRTUAL	(38,812)	(51,356)	(47,417)	(45,446)	(51,675)	(44,682)	(32,320)
	14	15	16	17	18	19	20
DAM NYCA	437,743	450,271	436,302	442,433	435,118	358,564	379,030
DAM NON-NYCA	100,864	106,758	103,053	113,778	109,243	90,926	78,104
DAM WHEELS	6,408	6,458	7,233	6,433	6,408	7,398	1,320
DAM VIRTUAL	36,190	33,675	32,656	33,939	41,299	49,889	46,212
BALANCING NYCA	18,979	(4,681)	2,554	(5,151)	4,775	16,363	12,203
BALANCING NON-NYCA	(1,846)	(4,929)	(123)	1,018	(3,712)	(618)	3,144
BALANCING WHEELS	(4,762)	(6,050)	(5,506)	(6,166)	(6,408)	(7,398)	(1,320)
BALANCING VIRTUAL	(36,190)	(33,675)	(32,656)	(33,939)	(41,299)	(49,889)	(46,212)
	21	22	23	24	25	26	27
DAM NYCA	478,657	404,716	380,609	381,301	405,154	366,891	349,368
DAM NON-NYCA	77,660	91,704	101,239	87,533	92,231	117,362	100,339
DAM WHEELS	294	7,148	6,408	6,408	6,408	6,638	6,524
DAM VIRTUAL	34,491	48,833	45,913	46,222	34,243	24,496	31,643
BALANCING NYCA	3,684	15,872	20,743	29,716	20,680	18,785	24,414
BALANCING NON-NYCA	8,031	(4,443)	(6,846)	5,796	1,777	2,731	4,269
BALANCING WHEELS	596	(6,948)	(5,608)	(136)	(1,686)	(5,535)	(6,502)
BALANCING VIRTUAL	(34,491)	(48,833)	(45,913)	(46,222)	(34,243)	(24,496)	(31,643)
	28	29	30	31			
DAM NYCA	383,246	400,695	417,077	372,156			
DAM NON-NYCA	94,771	104,705	101,005	88,857			
DAM WHEELS	6,408	6,408	6,508	6,433			
DAM VIRTUAL	29,691	29,165	34,975	38,775			
BALANCING NYCA	25,651	18,925	19,257	10,518			
BALANCING NON-NYCA	6,786	2,554	4,827	(522)			
BALANCING WHEELS	(2,136)	(2,011)	(2,236)	(5,506)			
BALANCING VIRTUAL	(29,691)	(29,165)	(34,975)	(38,775)			



SETTLEMENTS REPORT
 August 2023 Settlement Adjustment
 January 8, 2024

Initial Settlement – Market Withdrawals Analysis

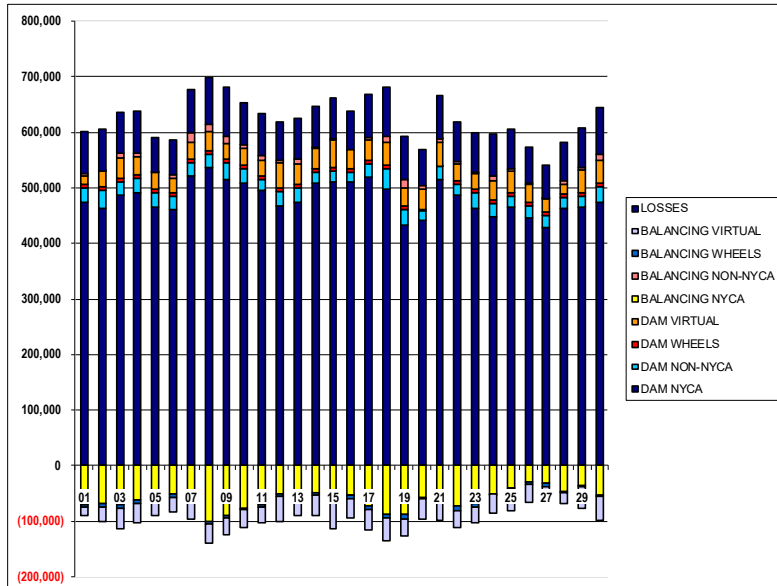
	MONDAY	TUESDAY	WEDNESDAY	THURSDAY	FRIDAY	SATURDAY	SUNDAY
		1	2	3	4	5	6
DAM NYCA		473,328	463,083	487,193	490,540	466,122	461,759
DAM NON-NYCA		27,176	33,306	24,047	26,654	25,881	23,081
DAM WHEELS		6,408	6,408	7,058	6,408	6,408	6,408
DAM VIRTUAL		14,108	26,915	35,628	33,287	29,709	25,978
BALANCING NYCA		(69,635)	(67,898)	(71,723)	(62,644)	(53,847)	(51,734)
BALANCING NON-NYCA		5,729	153	7,861	5,273	55	6,415
BALANCING WHEELS		(5,974)	(6,041)	(6,283)	(6,172)	(5,665)	(5,593)
BALANCING VIRTUAL		(14,108)	(26,915)	(35,628)	(33,287)	(29,709)	(25,978)
UFE/LOSSES		74,796	74,984	74,883	74,697	62,801	61,572
		7	8	9	10	11	12
DAM NYCA		522,456	536,440	515,555	508,797	494,636	466,524
DAM NON-NYCA		21,933	23,649	29,022	26,146	19,824	27,669
DAM WHEELS		6,408	6,408	6,408	6,408	6,408	6,458
DAM VIRTUAL		30,783	36,022	28,650	30,659	28,839	45,292
BALANCING NYCA		(64,601)	(100,966)	(89,797)	(76,312)	(69,803)	(51,178)
BALANCING NON-NYCA		16,879	11,482	13,565	4,692	7,517	4,292
BALANCING WHEELS		(3,150)	(2,784)	(5,340)	(3,734)	(5,281)	(4,215)
BALANCING VIRTUAL		(30,783)	(36,022)	(28,650)	(30,659)	(28,839)	(45,292)
UFE/LOSSES		79,315	84,467	89,248	77,645	75,487	67,756
		14	15	16	17	18	19
DAM NYCA		507,563	510,754	509,891	519,669	497,732	431,982
DAM NON-NYCA		21,182	18,768	17,979	24,057	37,651	28,501
DAM WHEELS		6,408	6,458	7,233	6,433	6,408	7,398
DAM VIRTUAL		36,931	50,652	34,717	36,444	40,887	31,657
BALANCING NYCA		(45,954)	(57,008)	(53,768)	(73,368)	(88,710)	(87,742)
BALANCING NON-NYCA		2,314	2,235	(659)	3,304	11,261	14,805
BALANCING WHEELS		(4,762)	(6,050)	(5,506)	(6,166)	(6,408)	(7,398)
BALANCING VIRTUAL		(36,931)	(50,652)	(34,717)	(36,444)	(40,887)	(31,657)
UFE/LOSSES		73,391	72,832	68,075	78,343	86,122	77,153
		21	22	23	24	25	26
DAM NYCA		515,985	486,638	463,991	448,878	465,247	446,842
DAM NON-NYCA		23,099	19,270	27,395	22,756	19,961	19,971
DAM WHEELS		294	7,148	6,408	6,408	6,408	6,638
DAM VIRTUAL		42,362	31,087	28,643	35,568	38,052	32,680
BALANCING NYCA		(55,314)	(73,504)	(68,839)	(49,666)	(40,478)	(28,496)
BALANCING NON-NYCA		5,771	3,556	1,355	7,640	3,795	2,851
BALANCING WHEELS		596	(6,948)	(5,608)	(136)	(1,686)	(5,535)
BALANCING VIRTUAL		(42,362)	(31,087)	(28,643)	(35,568)	(38,052)	(32,680)
UFE/LOSSES		78,576	72,004	71,877	75,386	70,851	64,230
		28	29	30	31		
DAM NYCA		463,047	465,233	473,197	437,827		
DAM NON-NYCA		18,590	20,360	28,178	21,590		
DAM WHEELS		6,408	6,408	6,508	6,433		
DAM VIRTUAL		18,893	40,046	41,668	32,413		
BALANCING NYCA		(46,656)	(35,231)	(53,537)	(60,026)		
BALANCING NON-NYCA		5,111	4,189	10,861	2,676		
BALANCING WHEELS		(2,136)	(2,011)	(2,236)	(5,506)		
BALANCING VIRTUAL		(18,893)	(40,046)	(41,668)	(32,413)		
UFE/LOSSES		70,457	72,312	83,739	69,199		



SETTLEMENTS REPORT
August 2023 Settlement Adjustment
January 8, 2024

4-Month Settlement Adjustment – Market Withdrawals Analysis

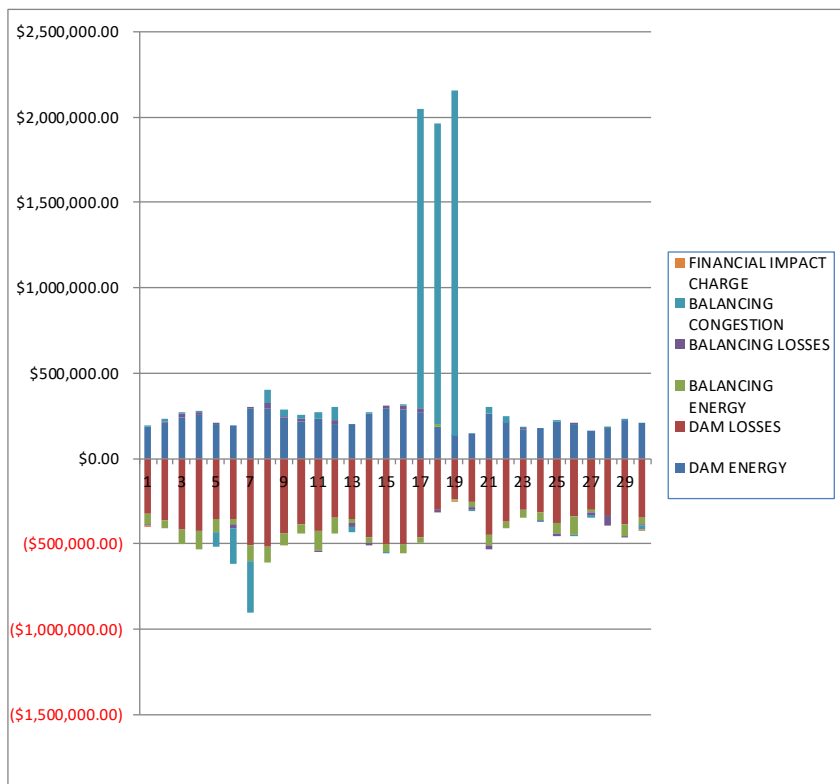
	MONDAY	TUESDAY	WEDNESDAY	THURSDAY	FRIDAY	SATURDAY	SUNDAY
		1	2	3	4	5	6
DAM NYCA		473,328	463,083	487,193	490,540	466,122	461,759
DAM NON-NYCA		27,176	33,306	24,047	26,654	25,881	23,081
DAM WHEELS		6,408	6,408	7,058	6,408	6,408	6,408
DAM VIRTUAL		14,108	26,915	35,628	33,287	29,709	25,978
BALANCING NYCA		(69,661)	(67,919)	(71,733)	(62,662)	(53,878)	(51,259)
BALANCING NON-NYCA		5,729	153	7,861	5,273	55	6,415
BALANCING WHEELS		(5,974)	(6,041)	(6,283)	(6,172)	(5,665)	(5,593)
BALANCING VIRTUAL		(14,108)	(26,915)	(35,628)	(33,287)	(29,709)	(25,978)
UFE/LOSSES		75,124	74,993	75,144	75,644	63,588	61,875
	7	8	9	10	11	12	13
DAM NYCA	522,458	536,440	515,555	508,797	494,636	466,524	474,915
DAM NON-NYCA	21,933	23,649	29,022	26,146	19,824	27,669	24,172
DAM WHEELS	6,408	6,408	6,408	6,408	6,408	6,408	6,458
DAM VIRTUAL	30,783	36,022	28,650	30,659	28,839	45,292	37,998
BALANCING NYCA	(63,282)	(101,432)	(89,857)	(76,367)	(69,826)	(51,199)	(48,804)
BALANCING NON-NYCA	16,879	11,482	13,565	4,682	7,517	4,292	8,483
BALANCING WHEELS	(3,150)	(2,784)	(5,340)	(3,734)	(5,261)	(4,215)	(4,160)
BALANCING VIRTUAL	(30,783)	(36,022)	(28,650)	(30,659)	(28,839)	(45,292)	(37,998)
UFE/LOSSES	79,345	84,858	89,289	77,659	76,524	68,595	73,212
	14	15	16	17	18	19	20
DAM NYCA	507,563	510,754	509,891	519,669	497,732	431,982	440,701
DAM NON-NYCA	21,182	18,768	17,979	24,057	37,651	28,501	18,244
DAM WHEELS	6,408	6,458	7,233	6,433	6,408	7,398	1,320
DAM VIRTUAL	36,931	50,652	34,717	36,444	40,887	31,657	36,763
BALANCING NYCA	(48,842)	(57,262)	(53,771)	(73,312)	(88,960)	(88,201)	(58,371)
BALANCING NON-NYCA	2,314	2,235	(659)	3,304	11,261	14,805	7,692
BALANCING WHEELS	(4,762)	(6,050)	(5,506)	(6,166)	(6,408)	(7,398)	(1,320)
BALANCING VIRTUAL	(36,931)	(50,652)	(34,717)	(36,444)	(40,887)	(31,657)	(36,763)
UFE/LOSSES	73,523	72,924	68,346	78,362	87,740	78,147	64,214
	21	22	23	24	25	26	27
DAM NYCA	515,985	486,638	463,991	448,878	465,247	446,842	428,820
DAM NON-NYCA	23,099	19,270	27,395	22,756	19,961	19,971	21,387
DAM WHEELS	294	7,148	6,408	6,408	6,408	6,638	6,524
DAM VIRTUAL	42,362	31,087	28,643	35,568	38,052	32,680	23,298
BALANCING NYCA	(65,580)	(73,632)	(69,077)	(50,495)	(40,921)	(28,914)	(32,774)
BALANCING NON-NYCA	5,771	3,556	1,355	7,640	3,795	2,851	685
BALANCING WHEELS	596	(6,948)	(5,608)	(136)	(1,686)	(5,535)	(6,502)
BALANCING VIRTUAL	(42,362)	(31,087)	(28,643)	(35,568)	(38,052)	(32,680)	(23,298)
UFE/LOSSES	78,792	72,016	72,081	75,567	71,759	65,019	60,273
	28	29	30	31			
DAM NYCA	463,047	465,233	473,197	437,827			
DAM NON-NYCA	18,590	20,360	28,178	21,590			
DAM WHEELS	6,408	6,408	6,508	6,433			
DAM VIRTUAL	18,893	40,046	41,668	32,413			
BALANCING NYCA	(46,803)	(35,404)	(53,874)	(60,316)			
BALANCING NON-NYCA	5,111	4,189	10,861	2,676			
BALANCING WHEELS	(2,136)	(2,011)	(2,236)	(5,506)			
BALANCING VIRTUAL	(18,893)	(40,046)	(41,668)	(32,413)			
UFE/LOSSES	70,510	72,502	84,614	69,233			



SETTLEMENTS REPORT
August 2023 Settlement Adjustment
January 8, 2024

Initial Settlement – Market Residuals Analysis

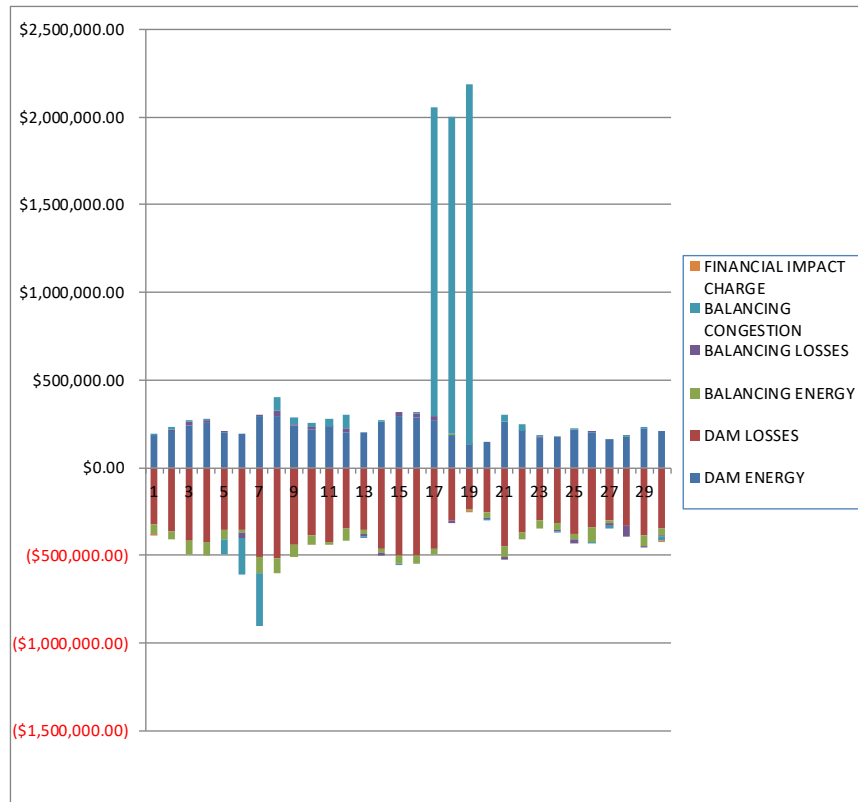
	MONDAY	TUESDAY	WEDNESDAY	THURSDAY	FRIDAY	SATURDAY	SUNDAY
		1	2	3	4	5	6
DAM ENERGY		\$186,767.87	\$208,303.40	\$239,630.64	\$257,346.34	\$201,723.52	\$195,023.67
DAM LOSSES		(\$326,166.84)	(\$363,548.62)	(\$418,751.04)	(\$427,893.33)	(\$356,860.85)	(\$356,826.68)
BALANCING ENERGY		(\$61,690.66)	(\$45,831.49)	(\$79,325.94)	(\$101,371.24)	(\$73,929.41)	(\$24,843.02)
BALANCING LOSSES		(\$1,800.22)	\$9,569.02	\$22,049.20	\$10,502.97	\$2,072.13	(\$25,664.70)
BALANCING CONGESTION		\$3,256.13	\$12,742.55	\$10,179.64	\$1,823.32	(\$83,010.03)	(\$212,835.07)
FINANCIAL IMPACT CHARGE		(\$166.70)	\$0.00	\$0.00	\$0.00	\$0.00	\$0.00
	7	8	9	10	11	12	13
DAM ENERGY	\$292,458.65	\$294,842.19	\$242,299.88	\$217,866.72	\$229,352.52	\$201,232.97	\$205,135.72
DAM LOSSES	(\$510,048.31)	(\$515,093.39)	(\$436,527.88)	(\$384,661.54)	(\$420,665.07)	(\$345,601.26)	(\$354,899.25)
BALANCING ENERGY	(\$93,432.84)	(\$96,179.81)	(\$71,498.60)	(\$58,420.20)	(\$122,061.51)	(\$97,346.92)	(\$25,173.54)
BALANCING LOSSES	\$4,610.86	\$28,599.27	\$9,271.26	\$11,844.81	(\$2,383.69)	\$23,867.86	(\$19,778.06)
BALANCING CONGESTION	(\$295,954.16)	\$75,547.11	\$36,801.43	\$26,624.29	\$42,347.63	\$75,736.53	(\$32,408.69)
FINANCIAL IMPACT CHARGE	\$0.00	\$0.00	\$0.00	\$0.00	\$0.00	\$0.00	\$0.00
	14	15	16	17	18	19	20
DAM ENERGY	\$264,662.25	\$295,518.94	\$286,780.09	\$269,508.01	\$182,518.78	\$135,003.89	\$147,312.95
DAM LOSSES	(\$466,484.97)	(\$497,813.76)	(\$499,933.06)	(\$459,263.72)	(\$301,957.75)	(\$241,947.98)	(\$253,636.07)
BALANCING ENERGY	(\$25,399.60)	(\$49,106.08)	(\$52,606.07)	(\$33,859.93)	\$17,123.23	(\$895.37)	(\$32,597.12)
BALANCING LOSSES	(\$13,360.32)	\$18,257.87	\$19,446.39	\$27,610.57	(\$12,356.90)	\$934.06	(\$10,496.14)
BALANCING CONGESTION	\$7,238.60	(\$8,836.29)	\$604.82	\$1,753,904.13	\$1,764,874.31	\$2,020,878.72	(\$7,648.41)
FINANCIAL IMPACT CHARGE	\$0.00	\$0.00	\$0.00	\$0.00	\$0.00	(\$1,085.68)	\$0.00
	21	22	23	24	25	26	27
DAM ENERGY	\$261,432.51	\$206,577.72	\$173,469.01	\$178,358.09	\$218,475.52	\$201,628.16	\$164,744.02
DAM LOSSES	(\$449,455.71)	(\$371,298.97)	(\$304,229.80)	(\$312,882.48)	(\$376,806.02)	(\$340,503.13)	(\$297,022.62)
BALANCING ENERGY	(\$62,246.21)	(\$37,720.79)	(\$45,765.59)	(\$46,275.07)	(\$61,950.94)	(\$107,869.73)	(\$16,780.53)
BALANCING LOSSES	(\$18,932.20)	\$2,932.59	\$7,206.35	(\$6,594.02)	(\$17,572.20)	\$11,179.41	(\$17,516.66)
BALANCING CONGESTION	\$38,828.87	\$36,712.25	\$4,238.08	(\$1,192.81)	\$3,257.09	\$7,481.62)	(\$12,864.37)
FINANCIAL IMPACT CHARGE	\$0.00	\$0.00	\$0.00	\$0.00	\$0.00	\$0.00	\$0.00
	28	29	30	31			
DAM ENERGY	\$176,464.91	\$225,742.43	\$208,130.60	\$173,996.86			
DAM LOSSES	(\$331,525.84)	(\$386,319.14)	(\$343,729.60)	(\$284,666.14)			
BALANCING ENERGY	\$713.13	(\$66,090.82)	(\$40,301.35)	(\$25,804.81)			
BALANCING LOSSES	(\$60,491.51)	(\$10,489.37)	(\$10,540.96)	(\$1,412.36)			
BALANCING CONGESTION	\$4,142.24	\$608.14	(\$20,933.69)	(\$1,139.20)			
FINANCIAL IMPACT CHARGE	\$0.00	\$0.00	(\$22.17)	\$0.00			



SETTLEMENTS REPORT
August 2023 Settlement Adjustment
January 8, 2024

4-Month Settlement Adjustment – Market Residuals Analysis

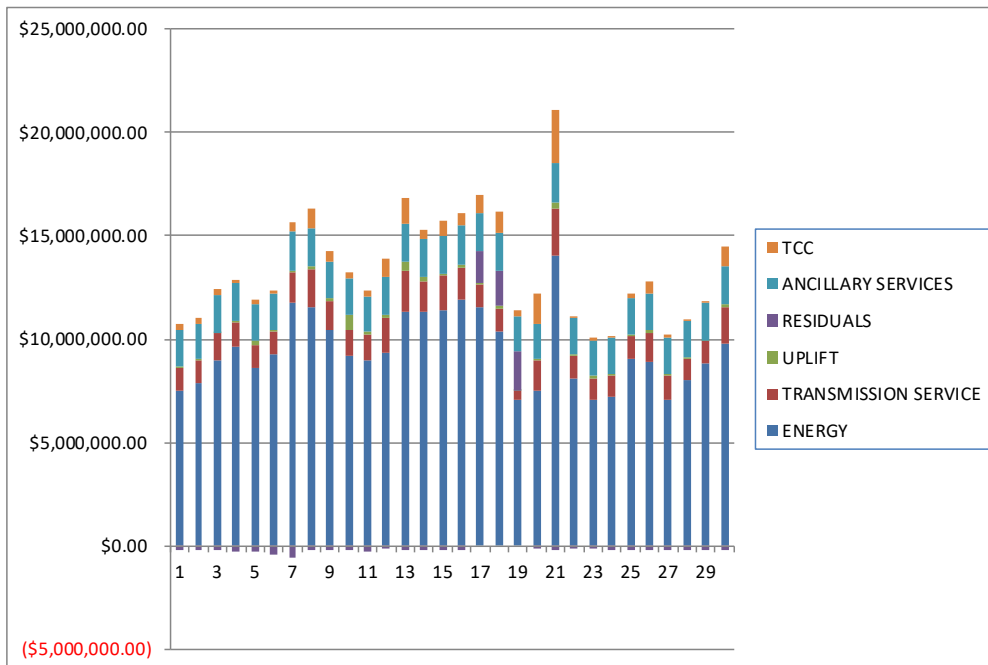
	MONDAY	TUESDAY	WEDNESDAY	THURSDAY	FRIDAY	SATURDAY	SUNDAY
		1	2	3	4	5	6
DAM ENERGY		\$186,767.87	\$208,303.40	\$239,630.63	\$257,346.34	\$201,723.52	\$195,023.67
DAM LOSSES		(\$326,156.84)	(\$363,548.62)	(\$418,751.04)	(\$427,893.33)	(\$356,860.85)	(\$356,826.68)
BALANCING ENERGY		(\$50,698.95)	(\$45,641.31)	(\$72,208.70)	(\$72,020.20)	(\$53,888.32)	(\$15,773.08)
BALANCING LOSSES		(\$1,295.59)	\$9,540.30	\$22,288.53	\$10,749.95	\$2,257.64	(\$25,218.90)
BALANCING CONGESTION		\$3,217.20	\$12,781.20	\$10,303.36	\$1,830.57	(\$82,194.84)	(\$211,758.22)
FINACIAL IMPACT CHARGE		(\$166.61)	\$0.00	\$0.00	\$0.00	\$0.00	\$0.00
	7	8	9	10	11	12	13
DAM ENERGY	\$292,458.65	\$294,842.20	\$242,299.89	\$217,866.72	\$229,352.52	\$201,232.97	\$205,135.73
DAM LOSSES	(\$510,048.31)	(\$515,093.39)	(\$436,527.88)	(\$384,661.53)	(\$420,665.08)	(\$345,601.25)	(\$354,899.25)
BALANCING ENERGY	(\$92,790.21)	(\$89,127.26)	(\$70,559.25)	(\$57,882.19)	(\$18,757.63)	(\$71,862.31)	(\$22,588.34)
BALANCING LOSSES	\$4,207.40	\$29,086.67	\$9,360.58	\$11,842.91	\$3,229.56	\$23,963.60	\$18,363.18)
BALANCING CONGESTION	(\$296,603.29)	\$75,479.65	\$36,791.07	\$26,652.17	\$42,921.56	\$78,838.28	(\$4,224.93)
FINACIAL IMPACT CHARGE	\$0.00	\$0.00	\$0.00	\$0.00	\$0.00	\$0.00	\$0.00
	14	15	16	17	18	19	20
DAM ENERGY	\$264,662.25	\$295,518.94	\$286,780.09	\$269,508.01	\$182,518.78	\$135,003.89	\$147,312.95
DAM LOSSES	(\$466,484.97)	(\$497,813.76)	(\$499,933.06)	(\$459,263.71)	(\$301,957.75)	(\$241,947.98)	(\$253,636.07)
BALANCING ENERGY	(\$21,311.66)	(\$46,370.11)	(\$44,190.71)	(\$33,455.07)	\$8,343.39	(\$1,619.09)	(\$29,086.50)
BALANCING LOSSES	(\$11,634.07)	\$18,660.47	\$20,047.08	\$27,719.67	(\$12,492.31)	\$856.81	(\$9,828.82)
BALANCING CONGESTION	\$7,864.97	(\$9,124.81)	\$599.88	\$1,757,076.53	\$1,807,858.09	\$2,050,825.57	(\$5,736.43)
FINACIAL IMPACT CHARGE	\$0.00	\$0.00	\$0.00	\$0.00	\$0.00	(\$1,085.62)	\$0.00
	21	22	23	24	25	26	27
DAM ENERGY	\$261,432.51	\$206,577.71	\$173,469.01	\$178,358.09	\$218,475.52	\$201,628.17	\$164,744.02
DAM LOSSES	(\$449,455.71)	(\$371,298.97)	(\$304,229.80)	(\$312,882.48)	(\$376,806.03)	(\$340,503.12)	(\$297,022.61)
BALANCING ENERGY	(\$57,117.02)	(\$37,444.21)	(\$40,440.55)	(\$41,706.99)	(\$34,766.51)	(\$84,205.02)	(\$15,551.12)
BALANCING LOSSES	(\$18,401.59)	\$3,166.61	\$7,634.69	(\$5,837.87)	(\$16,807.04)	\$11,466.86	(\$17,160.91)
BALANCING CONGESTION	\$38,825.29	\$36,762.25	\$4,263.83	(\$1,167.10)	\$3,166.51	(\$6,908.83)	(\$13,175.28)
FINACIAL IMPACT CHARGE	\$0.00	\$0.00	\$0.00	\$0.00	\$0.00	\$0.00	\$0.00
	28	29	30	31			
DAM ENERGY	\$176,464.92	\$225,742.44	\$208,130.59	\$173,996.86			
DAM LOSSES	(\$331,525.84)	(\$386,319.14)	(\$343,729.59)	(\$284,666.13)			
BALANCING ENERGY	\$2,272.61	(\$60,255.45)	(\$39,622.91)	(\$25,004.27)			
BALANCING LOSSES	(\$60,080.62)	(\$9,836.37)	(\$10,218.73)	(\$1,233.37)			
BALANCING CONGESTION	\$4,180.82	\$1,456.06	(\$20,351.50)	(\$1,106.27)			
FINACIAL IMPACT CHARGE	\$0.00	\$0.00	(\$22.13)	\$0.00			



SETTLEMENTS REPORT
August 2023 Settlement Adjustment
January 8, 2024

Initial Settlement – Market Costs Analysis

	MONDAY	TUESDAY	WEDNESDAY	THURSDAY	FRIDAY	SATURDAY	SUNDAY
		1	2	3	4	5	6
ENERGY		\$7,473,052.66	\$7,855,618.95	\$9,001,188.06	\$9,634,964.92	\$8,628,149.74	\$9,273,369.41
TRANSMISSION SERVICE		\$1,152,192.57	\$1,135,597.88	\$1,268,312.01	\$1,179,568.86	\$1,106,139.27	\$1,083,416.36
UPLIFT		\$55,979.62	\$20,004.19	\$19,394.43	\$64,788.52	\$200,023.11	\$95,206.37
RESIDUALS		(\$199,790.42)	(\$178,765.14)	(\$226,217.50)	(\$259,591.94)	(\$310,004.64)	(\$425,145.80)
ANCILLARY SERVICES		\$1,756,210.62	\$1,751,327.19	\$1,858,643.43	\$1,842,677.69	\$1,761,323.66	\$1,766,689.50
TCC		\$315,169.75	\$260,477.09	\$292,484.59	\$137,627.32	\$191,281.01	\$119,360.99
	7	8	9	10	11	12	13
ENERGY	\$11,758,750.40	\$11,542,851.26	\$10,406,730.35	\$9,169,309.89	\$8,955,889.67	\$9,336,631.51	\$11,356,620.48
TRANSMISSION SERVICE	\$1,461,664.05	\$1,872,621.68	\$1,439,368.06	\$1,238,403.49	\$1,289,673.74	\$1,670,963.33	\$1,962,399.40
UPLIFT	\$110,256.23	\$102,740.62	\$109,315.33	\$766,680.81	\$129,728.10	\$198,090.00	\$453,515.81
RESIDUALS	(\$602,365.80)	(\$212,284.63)	(\$219,653.91)	(\$186,745.92)	(\$273,410.12)	(\$142,110.82)	(\$227,123.82)
ANCILLARY SERVICES	\$1,880,437.70	\$1,865,243.94	\$1,819,506.96	\$1,796,192.22	\$1,676,916.65	\$1,781,843.41	\$1,838,492.28
TCC	\$421,046.40	\$970,001.63	\$499,218.71	\$239,580.99	\$314,298.95	\$911,423.88	\$1,220,084.40
	14	15	16	17	18	19	20
ENERGY	\$11,321,756.57	\$11,427,213.30	\$11,940,051.78	\$11,545,457.21	\$10,384,184.09	\$7,092,976.35	\$7,480,882.90
TRANSMISSION SERVICE	\$1,486,453.23	\$1,622,448.87	\$1,521,773.76	\$1,075,954.83	\$1,104,242.06	\$395,573.12	\$1,454,864.94
UPLIFT	\$182,896.43	\$85,314.43	\$109,996.74	\$77,868.99	\$154,919.30	\$27,717.12	\$80,861.77
RESIDUALS	(\$233,344.04)	(\$241,979.32)	(\$245,707.83)	\$1,557,899.06	\$1,650,201.67	\$1,912,887.64	(\$157,064.79)
ANCILLARY SERVICES	\$1,864,670.75	\$1,863,849.62	\$1,901,064.18	\$1,854,424.10	\$1,813,575.66	\$1,643,246.42	\$1,684,373.21
TCC	\$440,445.46	\$761,348.30	\$652,228.20	\$849,545.96	\$1,035,767.10	\$320,800.03	\$1,527,980.16
	21	22	23	24	25	26	27
ENERGY	\$14,040,590.76	\$8,106,672.37	\$7,080,594.92	\$7,225,970.42	\$9,044,276.19	\$8,868,429.57	\$7,092,845.64
TRANSMISSION SERVICE	\$2,303,305.21	\$1,065,500.37	\$1,039,223.40	\$1,026,161.73	\$1,133,119.76	\$1,431,334.20	\$1,127,215.26
UPLIFT	\$247,000.01	\$95,900.30	\$104,140.88	\$83,388.40	\$38,762.99	\$114,708.51	\$108,214.56
RESIDUALS	(\$230,372.74)	(\$162,797.20)	(\$165,081.95)	(\$188,586.29)	(\$234,596.55)	(\$243,046.91)	(\$179,440.16)
ANCILLARY SERVICES	\$1,901,001.66	\$1,750,660.49	\$1,721,763.02	\$1,730,087.58	\$1,782,211.51	\$1,822,172.79	\$1,730,478.67
TCC	\$2,579,055.44	\$79,136.14	\$118,567.49	\$52,022.90	\$207,698.77	\$542,765.20	\$196,695.04
	28	29	30	31			
ENERGY	\$8,031,472.57	\$8,791,037.14	\$9,763,898.32	\$6,542,611.46			
TRANSMISSION SERVICE	\$1,049,498.05	\$1,113,487.86	\$1,743,521.56	\$1,057,889.00			
UPLIFT	\$37,678.38	\$28,168.52	\$167,034.91	\$34,571.72			
RESIDUALS	(\$210,697.07)	(\$236,548.76)	(\$207,397.17)	(\$139,025.65)			
ANCILLARY SERVICES	\$1,755,295.78	\$1,806,848.53	\$1,815,857.61	\$1,685,368.21			
TCC	\$52,741.27	\$100,398.10	\$967,094.64	\$235,980.35			



SETTLEMENTS REPORT
August 2023 Settlement Adjustment
January 8, 2024

4-Month Settlement Adjustment – Market Costs Analysis

	MONDAY	TUESDAY	WEDNESDAY	THURSDAY	FRIDAY	SATURDAY	SUNDAY
		1	2	3	4	5	6
ENERGY		\$7,471,960.39	\$7,854,580.81	\$9,000,855.02	\$9,634,397.00	\$8,627,257.74	\$9,290,790.35
TRANSMISSION SERVICE		\$1,150,325.56	\$1,133,970.55	\$1,267,061.04	\$1,178,167.46	\$1,104,775.90	\$1,082,513.05
UPLIFT		\$55,979.62	\$20,035.83	\$19,493.12	\$64,860.27	\$200,058.38	\$95,322.07
RESIDUALS		(\$188,332.92)	(\$178,565.03)	(\$218,737.22)	(\$229,986.67)	(\$288,962.85)	(\$414,553.21)
ANCILLARY SERVICES		\$1,754,920.83	\$1,750,146.84	\$1,858,052.97	\$1,844,210.10	\$1,762,588.78	\$1,766,266.49
TCC		\$315,169.75	\$260,477.09	\$292,484.59	\$137,627.32	\$191,281.01	\$119,360.99
	7	8	9	10	11	12	13
ENERGY	\$11,800,510.91	\$11,533,934.19	\$10,405,067.14	\$9,167,053.47	\$8,952,977.60	\$9,336,033.37	\$11,297,303.82
TRANSMISSION SERVICE	\$1,463,044.20	\$1,870,973.35	\$1,438,463.67	\$1,237,138.37	\$1,288,527.91	\$1,669,506.50	\$1,942,541.55
UPLIFT	\$110,318.31	\$102,741.41	\$109,325.96	\$766,892.28	\$129,616.13	\$198,620.94	\$453,683.60
RESIDUALS	(\$602,775.76)	(\$204,812.13)	(\$218,635.59)	(\$186,181.92)	(\$163,919.07)	(\$113,428.71)	(\$194,939.97)
ANCILLARY SERVICES	\$1,881,897.27	\$1,863,893.09	\$1,818,837.14	\$1,795,268.35	\$1,662,722.13	\$1,782,432.53	\$1,833,456.27
TCC	\$421,046.40	\$970,001.63	\$499,218.71	\$239,580.99	\$314,298.95	\$911,423.88	\$1,220,084.40
	14	15	16	17	18	19	20
ENERGY	\$11,267,895.01	\$11,420,292.21	\$11,939,720.59	\$11,547,221.93	\$10,385,761.68	\$7,093,609.83	\$7,475,340.64
TRANSMISSION SERVICE	\$1,479,837.40	\$1,621,042.31	\$1,520,587.93	\$1,075,033.40	\$1,102,680.45	\$392,904.94	\$1,452,517.01
UPLIFT	\$183,089.99	\$85,315.65	\$109,976.23	\$77,868.06	\$155,009.14	\$27,517.43	\$80,854.70
RESIDUALS	(\$226,903.48)	(\$239,129.27)	(\$236,696.72)	\$1,561,585.43	\$1,684,270.20	\$1,942,033.58	(\$150,974.87)
ANCILLARY SERVICES	\$1,859,149.06	\$1,862,742.93	\$1,900,221.69	\$1,853,767.12	\$1,812,746.74	\$1,643,204.70	\$1,681,700.27
TCC	\$440,445.46	\$761,348.30	\$652,228.20	\$849,545.96	\$1,035,767.10	\$320,800.03	\$1,528,865.82
	21	22	23	24	25	26	27
ENERGY	\$14,032,818.61	\$8,103,643.59	\$7,074,508.25	\$7,202,271.05	\$9,031,741.47	\$8,856,163.96	\$7,083,799.06
TRANSMISSION SERVICE	\$2,301,646.50	\$1,063,848.32	\$1,037,338.53	\$1,023,151.46	\$1,131,158.48	\$1,429,585.36	\$1,125,457.68
UPLIFT	\$264,082.53	\$95,900.23	\$104,143.22	\$83,388.48	\$38,913.77	\$114,749.93	\$108,214.57
RESIDUALS	(\$224,716.52)	(\$162,236.61)	(\$159,302.82)	(\$183,236.35)	(\$206,737.55)	(\$218,521.94)	(\$178,165.90)
ANCILLARY SERVICES	\$1,903,692.25	\$1,749,419.52	\$1,720,321.65	\$1,727,622.46	\$1,782,241.27	\$1,823,936.67	\$1,729,112.59
TCC	\$2,575,075.92	\$79,136.14	\$118,567.49	\$52,022.90	\$207,698.77	\$542,765.20	\$196,695.04
	28	29	30	31			
ENERGY	\$8,026,541.62	\$8,785,480.62	\$9,753,296.44	\$6,536,225.76			
TRANSMISSION SERVICE	\$1,047,806.17	\$1,111,872.41	\$1,741,981.37	\$1,056,315.44			
UPLIFT	\$37,678.37	\$28,177.85	\$188,343.42	\$34,552.67			
RESIDUALS	(\$208,688.11)	(\$229,212.46)	(\$205,814.27)	(\$138,013.18)			
ANCILLARY SERVICES	\$1,754,022.95	\$1,805,625.58	\$1,814,357.32	\$1,684,134.91			
TCC	\$52,741.27	\$100,398.10	\$967,094.64	\$235,980.35			

