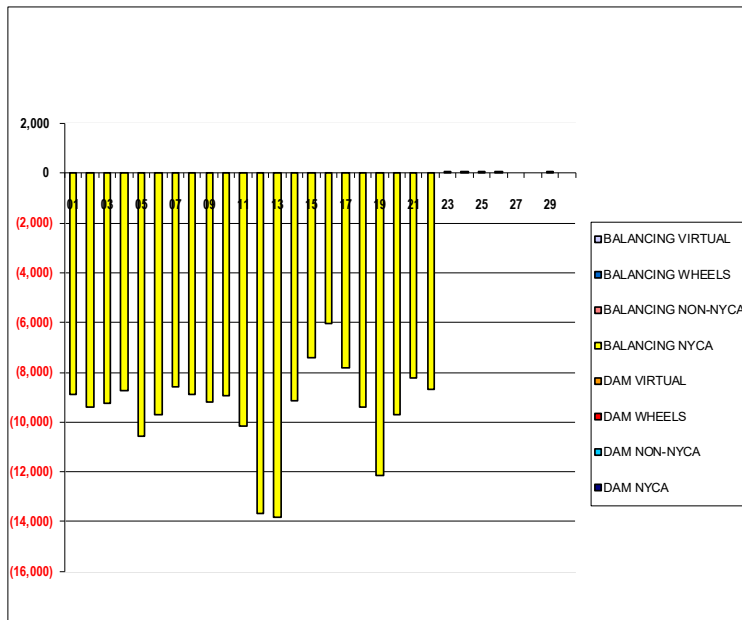


SETTLEMENTS REPORT
September 2023 Settlement Adjustment
February 7, 2024

Settlement Adjustment – Market Supply Delta Analysis

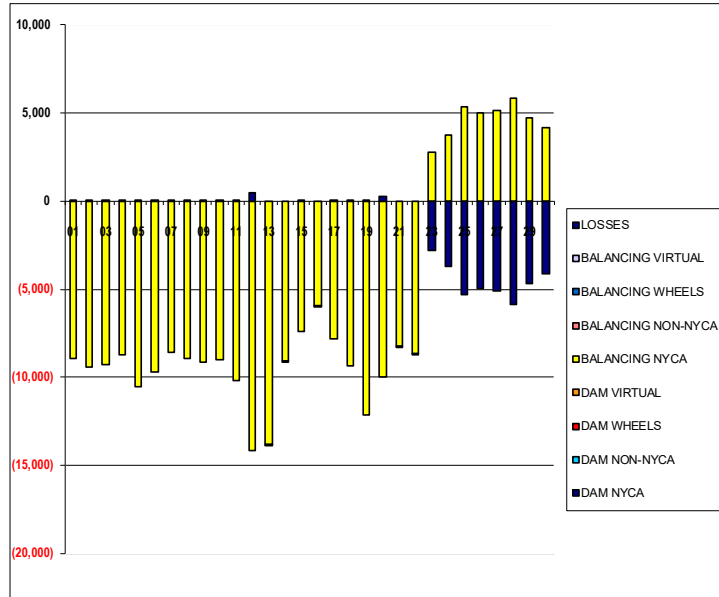
	MONDAY	TUESDAY	WEDNESDAY	THURSDAY	FRIDAY	SATURDAY	SUNDAY
					1	2	3
DAM NYCA					0	0	0
DAM NON-NYCA					0	0	0
DAM WHEELS					0	0	0
DAM VIRTUAL					0	0	0
BALANCING NYCA					(8,896)	(9,396)	(9,257)
BALANCING NON-NYCA					0	0	0
BALANCING WHEELS					0	0	0
BALANCING VIRTUAL					0	0	0
	4	5	6	7	8	9	10
DAM NYCA	0	0	0	0	0	0	0
DAM NON-NYCA	0	0	0	0	0	0	0
DAM WHEELS	0	0	0	0	0	0	0
DAM VIRTUAL	0	0	0	0	0	0	0
BALANCING NYCA	(8,723)	(10,546)	(9,691)	(8,599)	(8,905)	(9,173)	(8,964)
BALANCING NON-NYCA	0	0	0	0	0	0	0
BALANCING WHEELS	0	0	0	0	0	0	0
BALANCING VIRTUAL	0	0	0	0	0	0	0
	11	12	13	14	15	16	17
DAM NYCA	0	0	0	0	0	0	0
DAM NON-NYCA	0	0	0	0	0	0	0
DAM WHEELS	0	0	0	0	0	0	0
DAM VIRTUAL	0	0	0	0	0	0	0
BALANCING NYCA	(10,163)	(13,681)	(13,827)	(9,129)	(7,409)	(6,031)	(7,799)
BALANCING NON-NYCA	0	0	0	0	0	0	0
BALANCING WHEELS	0	0	0	0	0	0	0
BALANCING VIRTUAL	0	0	0	0	0	0	0
	18	19	20	21	22	23	24
DAM NYCA	0	0	0	0	0	0	0
DAM NON-NYCA	0	0	0	0	0	0	0
DAM WHEELS	0	0	0	0	0	0	0
DAM VIRTUAL	0	0	0	0	0	0	0
BALANCING NYCA	(9,379)	(12,144)	(9,696)	(8,208)	(8,668)	19	21
BALANCING NON-NYCA	0	0	0	0	0	0	0
BALANCING WHEELS	0	0	0	0	0	0	0
BALANCING VIRTUAL	0	0	0	0	0	0	0
	25	26	27	28	29	30	
DAM NYCA	0	0	0	0	0	0	
DAM NON-NYCA	0	0	0	0	0	0	
DAM WHEELS	0	0	0	0	0	0	
DAM VIRTUAL	0	0	0	0	0	0	
BALANCING NYCA	23	40	0	0	2	0	
BALANCING NON-NYCA	0	0	0	0	0	0	
BALANCING WHEELS	0	0	0	0	0	0	
BALANCING VIRTUAL	0	0	0	0	0	0	



SETTLEMENTS REPORT
 September 2023 Settlement Adjustment
 February 7, 2024

Settlement Adjustment – Market Withdrawals Delta Analysis

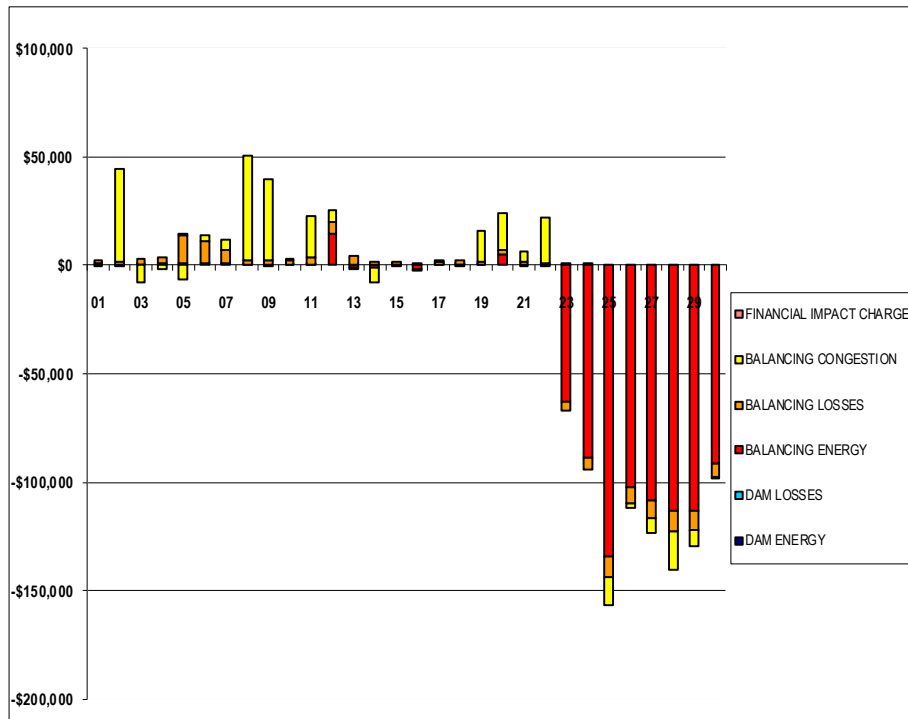
	MONDAY	TUESDAY	WEDNESDAY	THURSDAY	FRIDAY	SATURDAY	SUNDAY
					1	2	3
DAM NYCA					0	0	0
DAM NON-NYCA					0	0	0
DAM WHEELS					0	0	0
DAM VIRTUAL					0	0	0
BALANCING NYCA					(8,939)	(9,403)	(9,259)
BALANCING NON-NYCA					0	0	0
BALANCING WHEELS					0	0	0
BALANCING VIRTUAL					0	0	0
UFE/LOSSES					43	7	2
	4	5	6	7	8	9	10
DAM NYCA	0	0	0	0	0	0	0
DAM NON-NYCA	0	0	0	0	0	0	0
DAM WHEELS	0	0	0	0	0	0	0
DAM VIRTUAL	0	0	0	0	0	0	0
BALANCING NYCA	(8,757)	(10,547)	(9,693)	(8,619)	(8,908)	(9,174)	(8,969)
BALANCING NON-NYCA	0	0	0	0	0	0	0
BALANCING WHEELS	0	0	0	0	0	0	0
BALANCING VIRTUAL	0	0	0	0	0	0	0
UFE/LOSSES	34	1	2	20	3	1	5
	11	12	13	14	15	16	17
DAM NYCA	0	0	0	0	0	0	0
DAM NON-NYCA	0	0	0	0	0	0	0
DAM WHEELS	0	0	0	0	0	0	0
DAM VIRTUAL	0	0	0	0	0	0	0
BALANCING NYCA	(10,167)	(14,173)	(13,794)	(9,075)	(7,425)	(5,931)	(7,824)
BALANCING NON-NYCA	0	0	0	0	0	0	0
BALANCING WHEELS	0	0	0	0	0	0	0
BALANCING VIRTUAL	0	0	0	0	0	0	0
UFE/LOSSES	4	492	(33)	(54)	17	(100)	24
	18	19	20	21	22	23	24
DAM NYCA	0	0	0	0	0	0	0
DAM NON-NYCA	0	0	0	0	0	0	0
DAM WHEELS	0	0	0	0	0	0	0
DAM VIRTUAL	0	0	0	0	0	0	0
BALANCING NYCA	(9,383)	(12,147)	(9,956)	(8,202)	(6,649)	2,812	3,757
BALANCING NON-NYCA	0	0	0	0	0	0	0
BALANCING WHEELS	0	0	0	0	0	0	0
BALANCING VIRTUAL	0	0	0	0	0	0	0
UFE/LOSSES	4	3	260	(7)	(18)	(2,793)	(3,736)
	25	26	27	28	29	30	
DAM NYCA	0	0	0	0	0	0	
DAM NON-NYCA	0	0	0	0	0	0	
DAM WHEELS	0	0	0	0	0	0	
DAM VIRTUAL	0	0	0	0	0	0	
BALANCING NYCA	5,336	4,995	5,128	5,866	4,709	4,141	
BALANCING NON-NYCA	0	0	0	0	0	0	
BALANCING WHEELS	0	0	0	0	0	0	
BALANCING VIRTUAL	0	0	0	0	0	0	
UFE/LOSSES	(5,313)	(4,954)	(5,128)	(5,866)	(4,707)	(4,141)	



SETTLEMENTS REPORT
September 2023 Settlement Adjustment
February 7, 2024

Settlement Adjustment – Market Residuals Delta Analysis

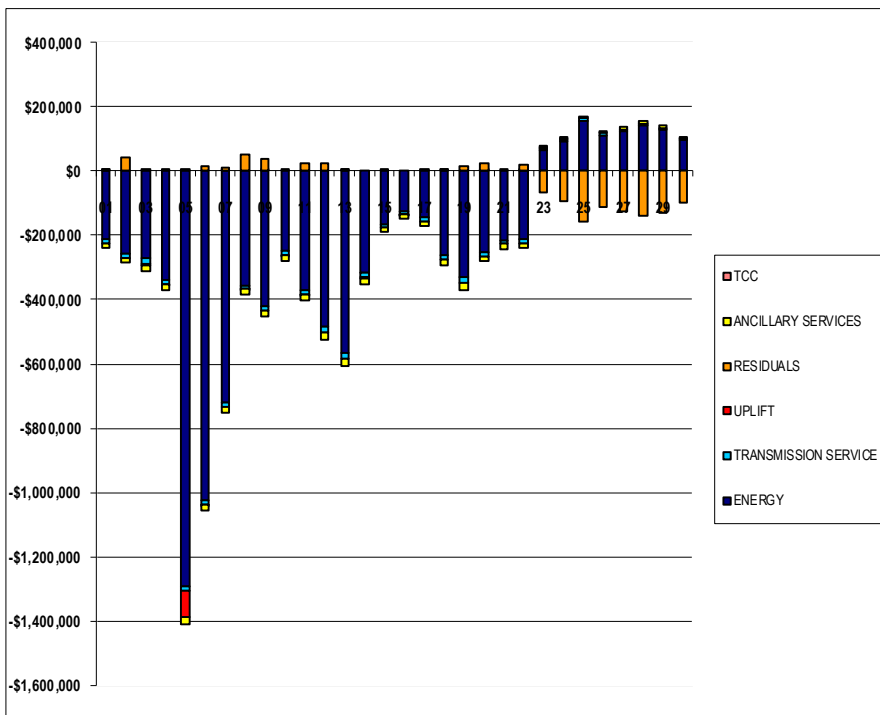
	MONDAY	TUESDAY	WEDNESDAY	THURSDAY	FRIDAY	SATURDAY	SUNDAY
					1	2	3
DAM ENERGY					\$0.00	\$0.00	\$0.00
DAM LOSSES					(\$0.01)	(\$0.01)	\$0.00
BALANCING ENERGY					\$956.42	(\$29.43)	\$94.65
BALANCING LOSSES					\$1,237.85	\$1,458.99	\$2,832.75
BALANCING CONGESTION					(\$56.59)	\$43,085.65	(\$8,134.73)
FINANCIAL IMPACT CHARGE					\$0.00	\$0.00	\$0.00
	4	5	6	7	8	9	10
DAM ENERGY	\$0.00	(\$0.01)	\$0.00	\$0.00	(\$0.01)	\$0.00	(\$0.01)
DAM LOSSES	(\$0.01)	\$0.00	(\$0.01)	\$0.00	\$0.00	\$0.00	\$0.00
BALANCING ENERGY	\$794.16	\$631.05	\$663.18	\$1,255.85	\$66.57	(\$379.33)	\$77.23
BALANCING LOSSES	\$3,111.65	\$12,932.84	\$10,361.30	\$5,544.37	\$2,284.65	\$2,223.57	\$2,322.42
BALANCING CONGESTION	(\$1,668.66)	(\$6,620.34)	\$2,604.60	\$5,355.76	\$47,957.46	\$37,164.63	\$28.36
FINANCIAL IMPACT CHARGE	\$0.00	\$0.15	\$0.00	(\$0.02)	(\$0.01)	\$0.00	\$0.00
	11	12	13	14	15	16	17
DAM ENERGY	\$0.00	\$0.00	\$0.00	(\$0.01)	\$0.00	(\$0.01)	\$0.00
DAM LOSSES	\$0.00	(\$0.01)	\$0.00	\$0.00	\$0.00	\$0.00	\$0.00
BALANCING ENERGY	\$73.47	\$14,472.65	(\$1,290.50)	(\$1,225.30)	\$86.39	(\$1,749.72)	\$127.23
BALANCING LOSSES	\$3,602.28	\$5,364.90	\$4,617.43	\$1,793.06	\$1,236.81	\$804.12	\$1,195.27
BALANCING CONGESTION	\$18,795.05	\$5,433.20	(\$788.75)	(\$6,766.75)	(\$574.35)	(\$436.25)	\$1.92
FINANCIAL IMPACT CHARGE	\$0.00	\$0.00	\$0.00	\$0.00	\$0.00	\$0.00	\$0.00
	18	19	20	21	22	23	24
DAM ENERGY	\$0.00	\$0.00	\$0.01	\$0.01	\$0.00	(\$0.01)	(\$0.01)
DAM LOSSES	\$0.01	\$0.00	(\$0.01)	(\$0.01)	\$0.00	\$0.00	\$0.01
BALANCING ENERGY	\$155.06	\$172.08	\$5,079.99	(\$194.05)	(\$158.20)	(\$63,214.27)	(\$88,582.96)
BALANCING LOSSES	\$2,065.08	\$1,549.41	\$1,975.63	\$1,345.53	\$1,166.52	(\$3,967.44)	(\$5,579.83)
BALANCING CONGESTION	(\$339.03)	\$14,448.89	\$16,932.46	\$4,999.11	\$20,694.78	\$27.56	\$14.36
FINANCIAL IMPACT CHARGE	\$0.00	\$0.00	\$0.00	\$0.00	\$0.00	\$0.00	\$0.00
	25	26	27	28	29	30	
DAM ENERGY	\$0.01	\$0.00	(\$0.01)	(\$0.01)	\$0.00	\$0.00	
DAM LOSSES	\$0.00	\$0.01	(\$0.01)	\$0.01	\$0.00	\$0.00	
BALANCING ENERGY	(\$134,504.12)	(\$102,125.39)	(\$108,598.25)	(\$113,467.52)	(\$113,453.06)	(\$91,210.85)	
BALANCING LOSSES	(\$9,390.71)	(\$8,030.60)	(\$8,281.93)	(\$9,267.97)	(\$8,611.02)	(\$6,647.51)	
BALANCING CONGESTION	(\$13,054.03)	(\$1,613.28)	(\$6,697.81)	(\$17,803.72)	(\$7,334.89)	(\$76.30)	
FINANCIAL IMPACT CHARGE	\$0.00	\$0.00	\$0.00	\$0.00	\$0.00	\$0.00	



SETTLEMENTS REPORT
September 2023 Settlement Adjustment
February 7, 2024

Settlement Adjustment – Market Costs Delta Analysis

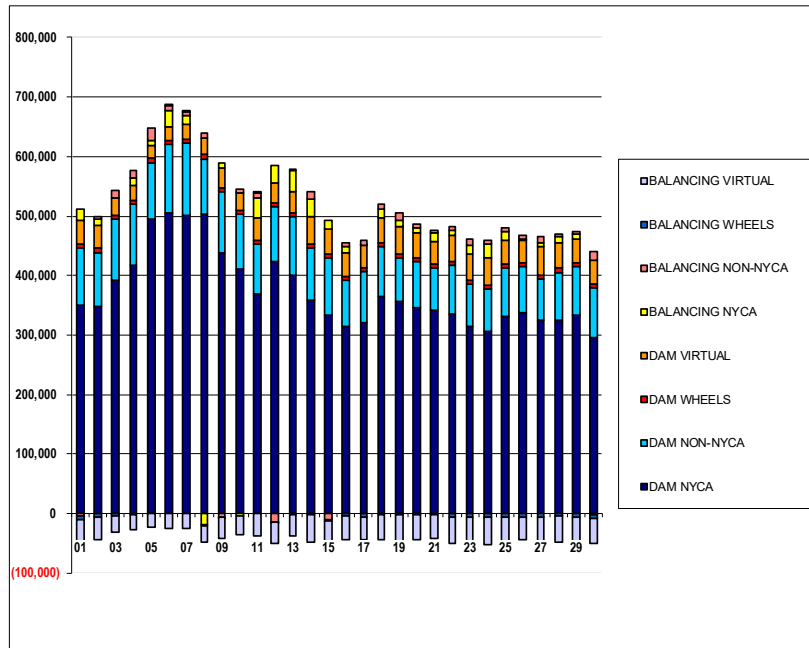
	MONDAY	TUESDAY	WEDNESDAY	THURSDAY	FRIDAY	SATURDAY	SUNDAY
ENERGY					1	2	3
TRANSMISSION SERVICE					(\$212,181.61)	(\$255,522.22)	(\$272,911.99)
UPLIFT					\$0.56	\$0.02	\$3.52
RESIDUALS					\$2,137.67	\$44,515.20	(\$5,207.33)
ANCILLARY SERVICES					(\$15,869.01)	(\$17,444.90)	(\$17,837.31)
TCC					\$0.00	\$0.00	\$0.00
	4	5	6	7	8	9	10
ENERGY	(\$340,820.90)	#####	#####	(\$722,182.77)	(\$354,715.97)	(\$420,368.60)	(\$249,725.10)
TRANSMISSION SERVICE	(\$13,408.58)	(\$15,822.77)	(\$14,353.50)	(\$12,865.16)	(\$12,466.25)	(\$13,681.51)	(\$12,542.41)
UPLIFT	(\$1.01)	(\$80,889.06)	(\$35.48)	\$27.84	(\$58.40)	\$250.01	(\$20.30)
RESIDUALS	\$2,237.14	\$6,943.69	\$13,629.07	\$12,155.96	\$50,308.66	\$39,008.87	\$2,428.00
ANCILLARY SERVICES	(\$17,276.90)	(\$20,459.74)	(\$18,602.54)	(\$16,645.81)	(\$16,323.97)	(\$17,745.51)	(\$16,425.51)
TCC	\$0.00	\$0.00	\$0.00	\$0.00	\$0.00	\$0.00	\$0.00
	11	12	13	14	15	16	17
ENERGY	(\$371,427.84)	(\$482,105.29)	(\$564,596.72)	(\$317,066.36)	(\$166,073.50)	(\$125,690.75)	(\$144,194.80)
TRANSMISSION SERVICE	(\$13,659.73)	(\$18,465.51)	(\$18,087.62)	(\$12,297.07)	(\$10,256.57)	(\$8,341.23)	(\$10,772.53)
UPLIFT	(\$37.12)	\$0.01	\$74.37	\$0.01	(\$0.05)	(\$53.10)	\$0.00
RESIDUALS	\$22,470.80	\$25,270.74	\$2,538.18	(\$6,199.00)	\$748.85	(\$1,381.86)	\$1,324.42
ANCILLARY SERVICES	(\$18,024.16)	(\$24,367.83)	(\$24,040.54)	(\$16,221.47)	(\$13,461.01)	(\$11,038.36)	(\$14,154.64)
TCC	\$0.00	\$0.00	\$0.00	\$0.00	\$0.00	\$0.00	\$0.00
	18	19	20	21	22	23	24
ENERGY	(\$262,463.71)	(\$331,789.77)	(\$251,039.11)	(\$215,464.43)	(\$213,352.45)	\$67,593.83	\$94,629.36
TRANSMISSION SERVICE	(\$12,495.86)	(\$15,927.88)	(\$13,055.37)	(\$11,097.06)	(\$11,666.35)	\$2,511.29	\$3,968.90
UPLIFT	\$692.81	\$0.00	\$547.97	(\$0.01)	\$2.42	\$6,084.09	\$1,051.02
RESIDUALS	\$1,881.12	\$16,170.38	\$23,988.08	\$6,150.59	\$21,703.10	(\$67,154.16)	(\$94,148.43)
ANCILLARY SERVICES	(\$16,515.61)	(\$21,002.78)	(\$17,413.81)	(\$14,612.85)	(\$15,388.02)	\$3,636.67	\$5,508.44
TCC	\$0.00	\$0.00	\$0.00	\$0.00	\$0.00	\$0.00	\$0.00
	25	26	27	28	29	30	
ENERGY	\$157,555.65	\$112,639.12	\$123,577.85	\$140,548.32	\$129,439.69	\$97,949.25	
TRANSMISSION SERVICE	\$5,890.40	\$5,208.80	\$5,353.26	\$6,274.73	\$4,737.56	\$3,825.17	
UPLIFT	\$0.01	\$0.01	\$0.02	(\$0.01)	\$0.00	(\$0.01)	
RESIDUALS	(\$156,948.85)	(\$111,769.26)	(\$123,578.01)	(\$140,539.21)	(\$129,398.97)	(\$97,934.66)	
ANCILLARY SERVICES	\$8,102.98	\$7,165.39	\$7,371.49	\$8,600.99	\$6,563.06	\$5,401.28	
TCC	\$0.00	\$0.00	\$0.00	\$0.00	\$0.00	\$0.00	



SETTLEMENTS REPORT
September 2023 Settlement Adjustment
February 7, 2024

Initial Settlement – Market Supply Analysis

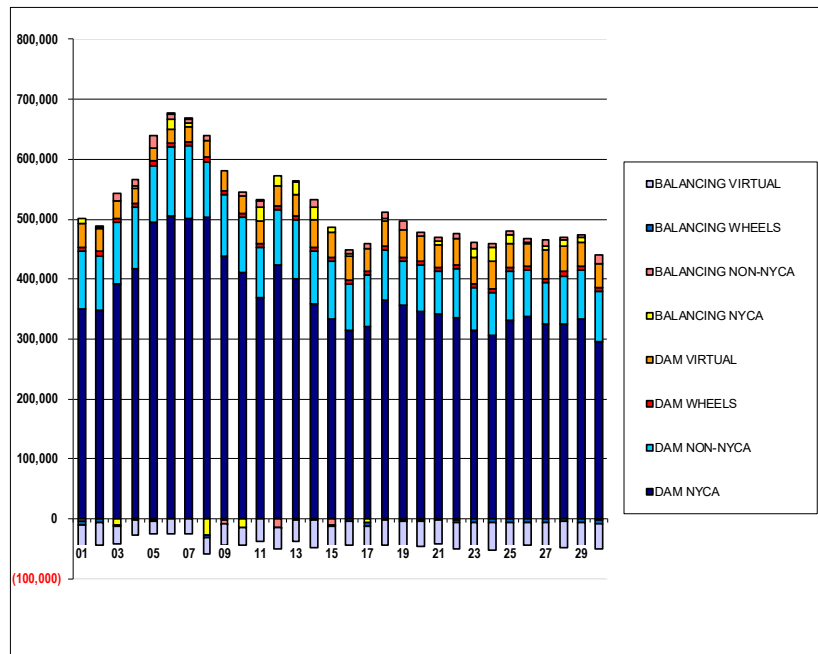
	MONDAY	TUESDAY	WEDNESDAY	THURSDAY	FRIDAY	SATURDAY	SUNDAY
					1	2	3
DAM NYCA					350,917	349,313	392,820
DAM NON-NYCA					96,104	88,870	102,491
DAM WHEELS					6,408	8,008	6,956
DAM VIRTUAL					38,920	37,780	27,634
BALANCING NYCA					18,684	11,517	(507)
BALANCING NON-NYCA					(4,455)	3,270	12,358
BALANCING WHEELS					(5,073)	(6,813)	(3,422)
BALANCING VIRTUAL					(38,920)	(37,780)	(27,634)
	4	5	6	7	8	9	10
DAM NYCA	416,957	495,113	505,471	501,998	503,961	438,672	410,202
DAM NON-NYCA	102,590	94,148	114,747	120,898	90,604	101,378	92,140
DAM WHEELS	6,933	8,583	6,433	6,608	9,321	6,508	6,408
DAM VIRTUAL	24,887	21,350	24,122	25,390	27,367	35,226	30,533
BALANCING NYCA	13,507	8,285	25,743	14,544	(18,583)	7,969	(4,540)
BALANCING NON-NYCA	10,811	20,712	8,613	6,384	9,300	(6,095)	6,949
BALANCING WHEELS	(2,160)	(613)	1,510	205	(2,913)	(100)	0
BALANCING VIRTUAL	(24,887)	(21,350)	(24,122)	(25,390)	(27,367)	(35,226)	(30,533)
	11	12	13	14	15	16	17
DAM NYCA	369,887	423,634	400,231	359,530	333,249	315,172	320,567
DAM NON-NYCA	83,019	91,621	98,864	87,719	96,964	77,162	85,831
DAM WHEELS	6,433	6,483	6,958	6,659	6,498	6,583	6,408
DAM VIRTUAL	36,946	34,411	34,286	45,237	42,026	39,233	37,756
BALANCING NYCA	34,131	29,565	35,815	29,598	14,895	9,921	1,198
BALANCING NON-NYCA	9,457	(14,519)	2,486	12,571	(10,391)	7,759	7,945
BALANCING WHEELS	25	(75)	(2,301)	(2,162)	(1,959)	(4,228)	(5,340)
BALANCING VIRTUAL	(36,946)	(34,411)	(34,286)	(45,237)	(42,026)	(39,233)	(37,756)
	18	19	20	21	22	23	24
DAM NYCA	365,045	356,252	345,460	342,634	336,703	315,715	306,398
DAM NON-NYCA	83,118	72,983	78,033	70,514	80,890	69,303	71,015
DAM WHEELS	6,433	6,408	6,408	7,008	6,408	6,408	6,408
DAM VIRTUAL	42,073	47,162	41,330	37,754	43,677	44,196	45,819
BALANCING NYCA	14,556	9,943	8,231	13,928	7,707	15,178	23,090
BALANCING NON-NYCA	9,944	13,296	6,141	5,225	8,021	9,948	6,292
BALANCING WHEELS	(2,161)	(2,036)	(2,243)	(2,736)	(5,484)	(6,408)	(5,355)
BALANCING VIRTUAL	(42,073)	(47,162)	(41,330)	(37,754)	(43,677)	(44,196)	(45,819)
	25	26	27	28	29	30	
DAM NYCA	332,149	337,321	324,385	325,456	334,502	296,645	
DAM NON-NYCA	81,915	77,360	69,948	80,157	80,804	82,036	
DAM WHEELS	6,458	6,408	6,783	6,690	6,483	6,408	
DAM VIRTUAL	39,449	38,780	47,450	42,274	38,969	40,945	
BALANCING NYCA	13,272	657	7,393	11,686	8,479	(2,567)	
BALANCING NON-NYCA	7,571	7,718	9,810	2,697	5,377	13,879	
BALANCING WHEELS	(5,949)	(5,711)	(5,701)	(4,821)	(6,483)	(6,289)	
BALANCING VIRTUAL	(39,449)	(38,780)	(47,450)	(42,274)	(38,969)	(40,945)	



SETTLEMENTS REPORT
September 2023 Settlement Adjustment
February 7, 2024

4-Month Settlement Adjustment – Market Supply Analysis

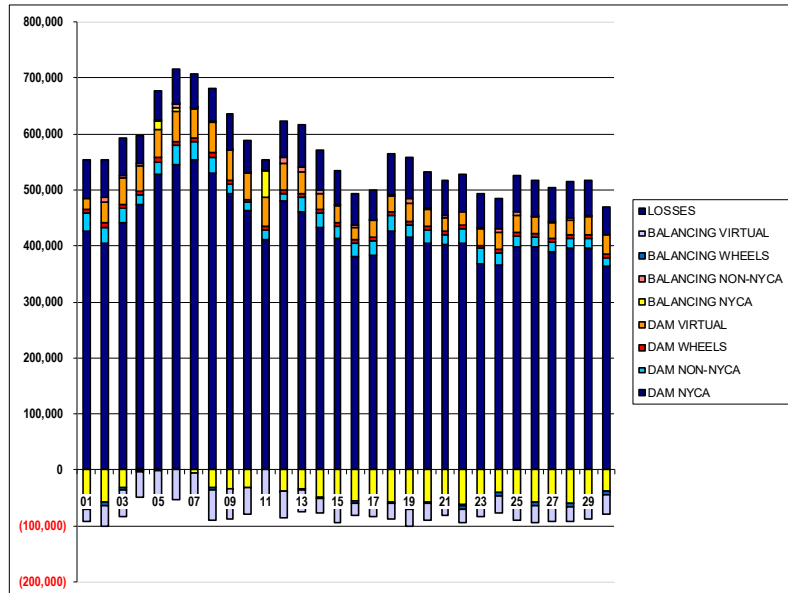
	MONDAY	TUESDAY	WEDNESDAY	THURSDAY	FRIDAY	SATURDAY	SUNDAY
DAM NYCA					1	2	3
DAM NON-NYCA					350,917	349,313	392,820
DAM WHEELS					96,104	88,870	102,491
DAM VIRTUAL					6,408	8,008	6,956
BALANCING NYCA					38,920	37,780	27,634
BALANCING NON-NYCA					9,788	2,120	(9,764)
BALANCING WHEELS					(4,455)	3,270	12,358
BALANCING VIRTUAL					(5,073)	(6,813)	(3,422)
					(38,920)	(37,780)	(27,634)
	4	5	6	7	8	9	10
DAM NYCA	416,957	495,113	505,471	501,998	503,961	438,672	410,202
DAM NON-NYCA	102,590	94,148	114,747	120,898	90,604	101,378	92,140
DAM WHEELS	6,933	8,583	6,433	6,608	9,321	6,508	6,408
DAM VIRTUAL	24,887	21,350	24,122	25,390	27,367	35,226	30,533
BALANCING NYCA	4,784	(2,262)	16,052	5,945	(27,488)	(1,204)	(13,504)
BALANCING NON-NYCA	10,811	20,712	8,613	6,384	9,300	(6,095)	6,949
BALANCING WHEELS	(2,160)	(613)	1,510	205	(2,913)	(100)	0
BALANCING VIRTUAL	(24,887)	(21,350)	(24,122)	(25,390)	(27,367)	(35,226)	(30,533)
	11	12	13	14	15	16	17
DAM NYCA	369,887	423,634	400,231	359,530	333,249	315,172	320,567
DAM NON-NYCA	83,019	91,621	98,864	87,719	96,964	77,162	85,831
DAM WHEELS	6,433	6,483	6,958	6,659	6,498	6,583	6,408
DAM VIRTUAL	36,946	34,411	34,286	45,237	42,026	39,233	37,756
BALANCING NYCA	23,968	15,884	21,988	20,469	7,486	3,890	(6,601)
BALANCING NON-NYCA	9,457	(14,519)	2,486	12,571	(10,391)	7,759	7,945
BALANCING WHEELS	25	(75)	(2,301)	(2,162)	(1,959)	(4,228)	(5,340)
BALANCING VIRTUAL	(36,946)	(34,411)	(34,286)	(45,237)	(42,026)	(39,233)	(37,756)
	18	19	20	21	22	23	24
DAM NYCA	365,045	356,252	345,460	342,634	336,703	315,715	306,398
DAM NON-NYCA	83,118	72,983	78,033	70,514	80,890	69,303	71,015
DAM WHEELS	6,433	6,408	6,408	7,008	6,408	6,408	6,408
DAM VIRTUAL	42,073	47,162	41,330	37,754	43,677	44,196	45,819
BALANCING NYCA	5,176	(2,201)	(1,465)	5,720	(961)	15,197	23,111
BALANCING NON-NYCA	9,944	13,296	6,141	5,225	8,021	9,948	6,292
BALANCING WHEELS	(2,161)	(2,036)	(2,243)	(2,736)	(5,484)	(6,408)	(5,355)
BALANCING VIRTUAL	(42,073)	(47,162)	(41,330)	(37,754)	(43,677)	(44,196)	(45,819)
	25	26	27	28	29	30	
DAM NYCA	332,149	337,321	324,385	325,456	334,502	296,645	
DAM NON-NYCA	81,915	77,360	69,948	80,157	80,804	82,036	
DAM WHEELS	6,458	6,408	6,783	6,690	6,483	6,408	
DAM VIRTUAL	39,449	38,780	47,450	42,274	38,969	40,945	
BALANCING NYCA	13,295	697	7,393	11,686	8,481	(2,567)	
BALANCING NON-NYCA	7,571	7,718	9,810	2,697	5,377	13,879	
BALANCING WHEELS	(5,949)	(5,711)	(5,701)	(4,821)	(6,483)	(6,289)	
BALANCING VIRTUAL	(39,449)	(38,780)	(47,450)	(42,274)	(38,969)	(40,945)	



SETTLEMENTS REPORT
September 2023 Settlement Adjustment
February 7, 2024

Initial Settlement – Market Withdrawals Analysis

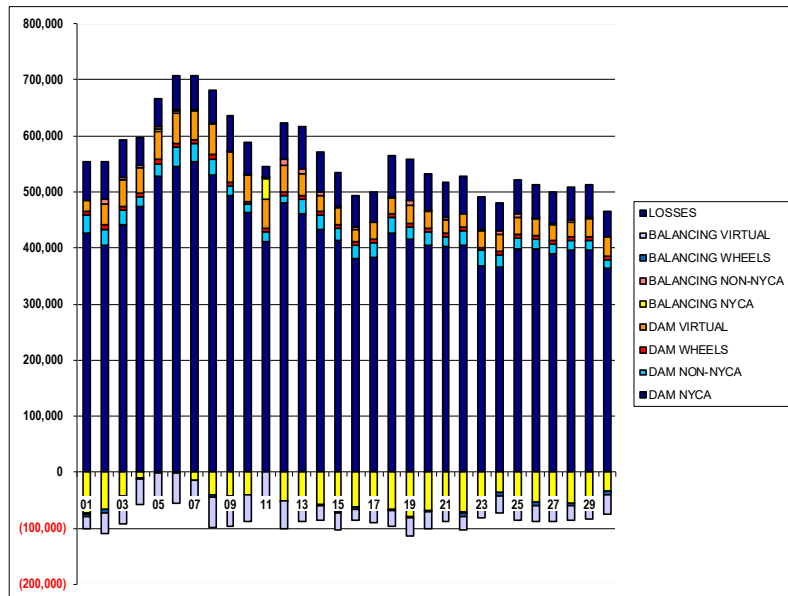
	MONDAY	TUESDAY	WEDNESDAY	THURSDAY	FRIDAY	SATURDAY	SUNDAY
					1	2	3
DAM NYCA					425,446	405,844	441,097
DAM NON-NYCA					33,102	27,787	26,063
DAM WHEELS					6,408	8,008	6,956
DAM VIRTUAL					20,654	36,057	46,696
BALANCING NYCA					(63,473)	(57,495)	(32,667)
BALANCING NON-NYCA					(2,565)	8,861	4,560
BALANCING WHEELS					(5,073)	(6,813)	(3,422)
BALANCING VIRTUAL					(20,654)	(36,057)	(46,696)
UFE/LOSSES					68,739	67,973	68,110
	4	5	6	7	8	9	10
DAM NYCA	473,492	527,425	546,339	555,003	530,347	493,744	462,138
DAM NON-NYCA	17,596	22,542	34,294	31,654	27,279	17,123	15,130
DAM WHEELS	6,933	8,583	6,433	6,608	9,321	6,508	6,408
DAM VIRTUAL	45,715	50,238	53,020	50,851	54,589	53,729	46,552
BALANCING NYCA	(873)	14,753	7,639	(5,049)	(32,435)	(33,128)	(31,711)
BALANCING NON-NYCA	2,994	2,689	4,679	3,356	1,247	342	577
BALANCING WHEELS	(2,160)	(613)	1,510	205	(2,913)	(100)	0
BALANCING VIRTUAL	(45,715)	(50,238)	(53,020)	(50,851)	(54,589)	(53,729)	(46,552)
UFE/LOSSES	50,655	50,849	61,623	58,859	58,845	63,843	58,616
	11	12	13	14	15	16	17
DAM NYCA	411,490	480,905	462,019	433,510	413,384	380,903	384,078
DAM NON-NYCA	17,976	12,635	24,644	26,184	22,030	24,070	24,478
DAM WHEELS	6,433	6,483	6,958	6,659	6,498	6,583	6,408
DAM VIRTUAL	52,076	47,654	38,983	26,536	30,552	21,292	30,080
BALANCING NYCA	46,434	(37,983)	(33,067)	(48,973)	(62,932)	(55,154)	(47,600)
BALANCING NON-NYCA	819	11,177	7,578	6,069	1,506	3,341	583
BALANCING WHEELS	25	(75)	(2,301)	(2,162)	(1,959)	(4,228)	(5,340)
BALANCING VIRTUAL	(52,076)	(47,654)	(38,983)	(26,536)	(30,552)	(21,292)	(30,080)
UFE/LOSSES	19,776	63,567	76,222	72,628	60,728	56,855	54,002
	18	19	20	21	22	23	24
DAM NYCA	426,061	415,076	405,374	402,738	404,286	367,675	366,537
DAM NON-NYCA	29,272	22,675	22,354	17,665	27,407	27,493	20,403
DAM WHEELS	6,433	6,408	6,408	6,408	7,008	6,408	6,408
DAM VIRTUAL	28,212	31,514	30,134	23,854	23,297	28,777	30,517
BALANCING NYCA	(57,096)	(68,028)	(58,370)	(53,931)	(62,885)	(48,547)	(40,911)
BALANCING NON-NYCA	2,338	9,690	2,295	3,043	(2,136)	1,703	6,418
BALANCING WHEELS	(2,161)	(2,036)	(2,243)	(2,736)	(5,484)	(6,408)	(5,355)
BALANCING VIRTUAL	(28,212)	(31,514)	(30,134)	(23,854)	(23,297)	(28,777)	(30,517)
UFE/LOSSES	72,087	73,061	66,211	62,786	66,648	61,819	54,348
	25	26	27	28	29	30	
DAM NYCA	398,391	397,660	389,181	396,251	396,770	364,021	
DAM NON-NYCA	19,417	18,825	17,520	16,781	17,432	14,122	
DAM WHEELS	6,458	6,408	6,783	6,690	6,483	6,408	
DAM VIRTUAL	29,221	29,274	27,739	26,967	32,140	35,165	
BALANCING NYCA	(55,404)	(58,428)	(59,242)	(60,565)	(49,407)	(37,203)	
BALANCING NON-NYCA	7,118	1,155	2,562	4,553	2,521	(221)	
BALANCING WHEELS	(5,949)	(5,711)	(5,701)	(4,821)	(6,483)	(6,289)	
BALANCING VIRTUAL	(29,221)	(29,274)	(27,739)	(26,967)	(32,140)	(35,165)	
UFE/LOSSES	65,385	63,843	61,516	62,977	61,847	49,274	



SETTLEMENTS REPORT
September 2023 Settlement Adjustment
February 7, 2024

4-Month Settlement Adjustment – Market Withdrawals Analysis

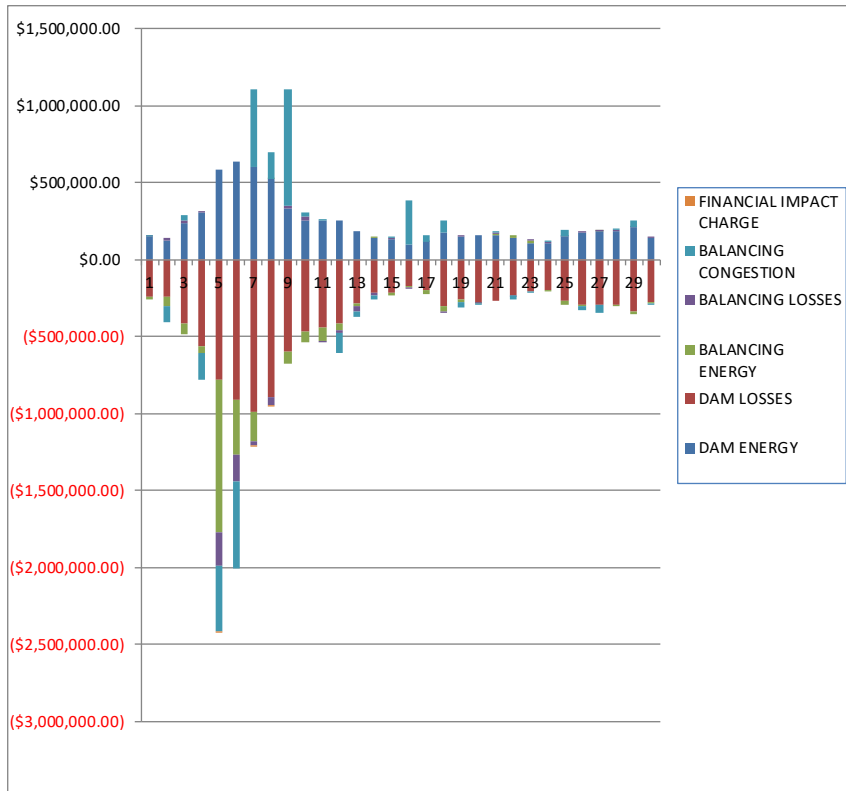
	MONDAY	TUESDAY	WEDNESDAY	THURSDAY	FRIDAY	SATURDAY	SUNDAY
					1	2	3
DAM NYCA					425,446	405,844	441,097
DAM NON-NYCA					33,102	27,787	26,063
DAM WHEELS					6,408	8,008	6,956
DAM VIRTUAL					20,654	36,057	46,696
BALANCING NYCA					(72,412)	(66,899)	(41,926)
BALANCING NON-NYCA					(2,565)	8,861	4,560
BALANCING WHEELS					(5,073)	(6,813)	(3,422)
BALANCING VIRTUAL					(20,654)	(36,057)	(46,696)
UFE/LOSSES					68,782	67,980	68,112
	4	5	6	7	8	9	10
DAM NYCA	473,492	527,425	546,339	555,003	530,347	493,744	462,138
DAM NON-NYCA	17,596	22,542	34,294	31,654	27,279	17,123	15,130
DAM WHEELS	6,933	8,583	6,433	6,608	9,321	6,508	6,408
DAM VIRTUAL	45,715	50,238	53,020	50,851	54,589	53,729	46,552
BALANCING NYCA	(9,630)	4,205	(2,054)	(13,668)	(41,343)	(42,302)	(40,679)
BALANCING NON-NYCA	2,994	2,689	4,679	3,356	1,247	342	577
BALANCING WHEELS	(2,160)	(613)	1,510	205	(2,913)	(100)	0
BALANCING VIRTUAL	(45,715)	(50,238)	(53,020)	(50,851)	(54,589)	(53,729)	(46,552)
UFE/LOSSES	50,689	50,851	61,625	58,879	58,848	63,844	58,621
	11	12	13	14	15	16	17
DAM NYCA	411,490	480,905	462,019	433,510	413,384	380,903	384,078
DAM NON-NYCA	17,976	12,635	24,644	26,184	22,030	24,070	24,478
DAM WHEELS	6,433	6,483	6,958	6,659	6,498	6,583	6,408
DAM VIRTUAL	52,076	47,654	38,983	26,536	30,552	21,292	30,080
BALANCING NYCA	36,267	(52,156)	(46,861)	(58,048)	(70,357)	(61,085)	(55,423)
BALANCING NON-NYCA	819	11,177	7,578	6,069	1,506	3,341	583
BALANCING WHEELS	25	(75)	(2,301)	(2,162)	(1,959)	(4,228)	(5,340)
BALANCING VIRTUAL	(52,076)	(47,654)	(38,983)	(26,536)	(30,552)	(21,292)	(30,080)
UFE/LOSSES	19,780	64,060	76,188	72,574	60,745	56,755	54,026
	18	19	20	21	22	23	24
DAM NYCA	426,061	415,076	405,374	402,738	404,286	367,675	366,537
DAM NON-NYCA	29,272	22,675	22,354	17,665	27,407	27,493	20,403
DAM WHEELS	6,433	6,408	6,408	7,008	6,408	6,408	6,408
DAM VIRTUAL	28,212	31,514	30,134	23,854	23,297	28,777	30,517
BALANCING NYCA	(66,479)	(80,175)	(68,325)	(62,133)	(71,535)	(45,734)	(37,154)
BALANCING NON-NYCA	2,338	9,690	2,295	3,043	(2,136)	1,703	6,418
BALANCING WHEELS	(2,161)	(2,036)	(2,243)	(2,736)	(5,484)	(6,408)	(5,355)
BALANCING VIRTUAL	(28,212)	(31,514)	(30,134)	(23,854)	(23,297)	(28,777)	(30,517)
UFE/LOSSES	72,091	73,063	66,470	62,779	66,629	59,025	50,612
	25	26	27	28	29	30	
DAM NYCA	398,391	397,660	389,181	396,251	396,770	364,021	
DAM NON-NYCA	19,417	18,825	17,520	16,781	17,432	14,122	
DAM WHEELS	6,458	6,408	6,783	6,690	6,483	6,408	
DAM VIRTUAL	29,221	29,274	27,739	26,967	32,140	35,165	
BALANCING NYCA	(50,068)	(53,433)	(54,114)	(54,699)	(44,698)	(33,062)	
BALANCING NON-NYCA	7,118	1,155	2,562	4,553	2,521	(221)	
BALANCING WHEELS	(5,949)	(5,711)	(5,701)	(4,821)	(6,483)	(6,289)	
BALANCING VIRTUAL	(29,221)	(29,274)	(27,739)	(26,967)	(32,140)	(35,165)	
UFE/LOSSES	60,072	58,889	56,387	57,111	57,140	45,133	



SETTLEMENTS REPORT
September 2023 Settlement Adjustment
February 7, 2024

Initial Settlement – Market Residuals Analysis

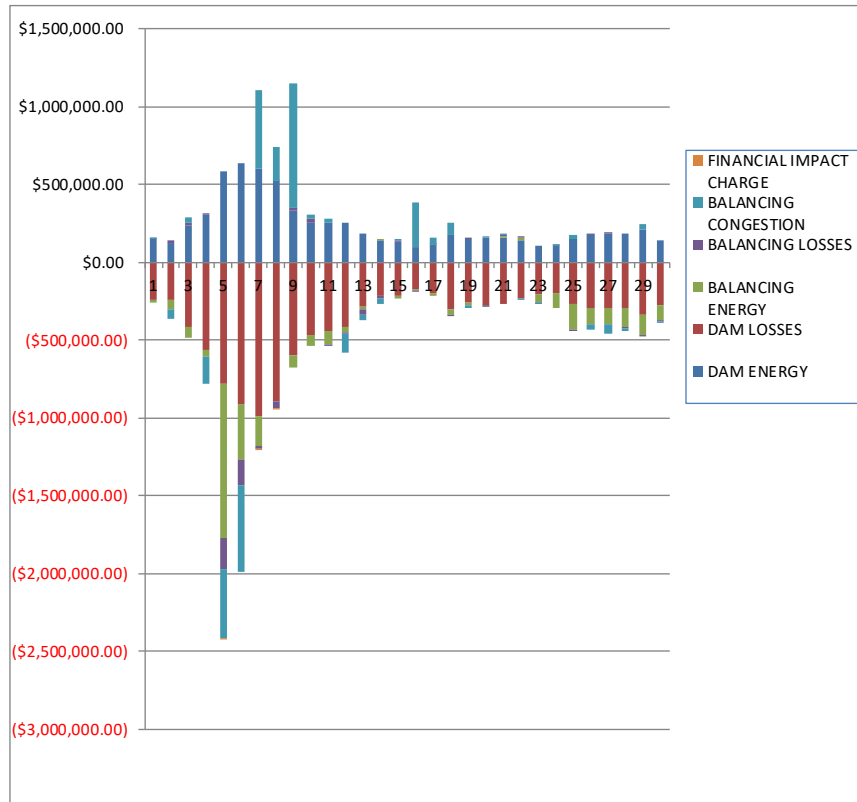
	MONDAY	TUESDAY	WEDNESDAY	THURSDAY	FRIDAY	SATURDAY	SUNDAY
					1	2	3
DAM ENERGY					\$144,562.92	\$125,937.42	\$235,957.87
DAM LOSSES					(\$244,574.04)	(\$238,412.24)	(\$416,795.00)
BALANCING ENERGY					(\$16,621.04)	(\$60,603.38)	(\$69,995.89)
BALANCING LOSSES					\$907.29	\$13,304.54	\$14,807.88
BALANCING CONGESTION					\$8,575.08	(\$105,816.26)	\$39,303.46
FINANCIAL IMPACT CHARGE					\$0.00	\$0.00	\$0.00
	4	5	6	7	8	9	10
DAM ENERGY	\$303,110.56	\$587,512.79	\$635,330.83	\$602,113.73	\$519,406.19	\$335,165.28	\$255,358.75
DAM LOSSES	(\$560,728.34)	(\$783,125.96)	(\$909,063.58)	(\$988,991.24)	(\$895,773.63)	(\$602,303.05)	(\$467,768.82)
BALANCING ENERGY	(\$46,125.41)	(\$985,353.82)	(\$363,119.93)	(\$189,960.69)	\$1,103.35	(\$77,864.72)	(\$69,489.96)
BALANCING LOSSES	\$2,604.33	(\$218,543.97)	(\$172,135.03)	(\$30,494.51)	(\$47,445.06)	\$13,065.66	\$25,151.39
BALANCING CONGESTION	(\$171,128.00)	(\$432,193.24)	(\$559,066.99)	\$499,831.84	\$171,973.69	\$757,965.34	\$22,364.64
FINANCIAL IMPACT CHARGE	\$0.00	(\$490.41)	\$0.00	(\$1,360.20)	(\$2,152.30)	\$0.00	\$0.00
	11	12	13	14	15	16	17
DAM ENERGY	\$256,860.76	\$249,135.79	\$182,028.23	\$136,442.89	\$134,618.13	\$98,833.77	\$114,061.64
DAM LOSSES	(\$440,858.69)	(\$412,243.89)	(\$283,599.78)	(\$219,526.71)	(\$212,083.29)	(\$172,895.78)	(\$202,450.63)
BALANCING ENERGY	(\$86,907.60)	(\$49,923.17)	(\$18,240.17)	\$1,229.48	(\$18,067.64)	(\$10,603.73)	(\$18,222.13)
BALANCING LOSSES	(\$5,500.51)	(\$13,633.81)	(\$35,505.12)	(\$17,740.43)	\$2,455.06	(\$851.57)	\$2,865.81
BALANCING CONGESTION	\$6,081.73	(\$134,016.98)	(\$34,456.62)	(\$24,529.19)	\$10,983.27	\$283,388.84	\$39,233.58
FINANCIAL IMPACT CHARGE	\$0.00	\$0.00	\$0.00	\$0.00	\$0.00	\$0.00	\$0.00
	18	19	20	21	22	23	24
DAM ENERGY	\$170,899.55	\$151,173.20	\$159,337.45	\$153,876.52	\$137,720.41	\$107,946.50	\$106,025.13
DAM LOSSES	(\$306,452.20)	(\$259,067.37)	(\$274,463.94)	(\$266,612.68)	(\$231,447.80)	(\$203,858.39)	(\$196,744.78)
BALANCING ENERGY	(\$28,084.50)	(\$14,956.89)	(\$6,238.38)	\$15,872.77	\$17,268.07	\$11,098.40	(\$13,550.78)
BALANCING LOSSES	(\$9,592.66)	\$3,279.26	(\$5,154.04)	\$2,211.66	(\$831.16)	\$238.23	\$7,494.75
BALANCING CONGESTION	\$83,305.59	(\$35,600.14)	(\$11,659.40)	\$7,281.74	(\$30,561.32)	(\$1,701.45)	\$429.14
FINANCIAL IMPACT CHARGE	\$0.00	\$0.00	\$0.00	\$0.00	\$0.00	\$0.00	\$0.00
	25	26	27	28	29	30	
DAM ENERGY	\$145,755.20	\$177,340.12	\$179,179.52	\$183,972.68	\$209,684.25	\$142,413.08	
DAM LOSSES	(\$266,403.20)	(\$290,319.40)	(\$296,273.97)	(\$295,172.39)	(\$339,301.43)	(\$273,592.68)	
BALANCING ENERGY	(\$32,000.61)	(\$10,702.38)	\$2,940.69	(\$10,168.24)	(\$15,237.21)	(\$10,527.20)	
BALANCING LOSSES	\$7,331.23	\$8,455.85	\$10,306.45	\$4,384.27	\$2,710.95	\$1,788.59	
BALANCING CONGESTION	\$39,495.16	(\$31,226.03)	(\$50,443.37)	\$951.53	\$44,659.03	(\$3,016.01)	
FINANCIAL IMPACT CHARGE	\$0.00	\$0.00	\$0.00	\$0.00	\$0.00	\$0.00	



SETTLEMENTS REPORT
September 2023 Settlement Adjustment
February 7, 2024

4-Month Settlement Adjustment – Market Residuals Analysis

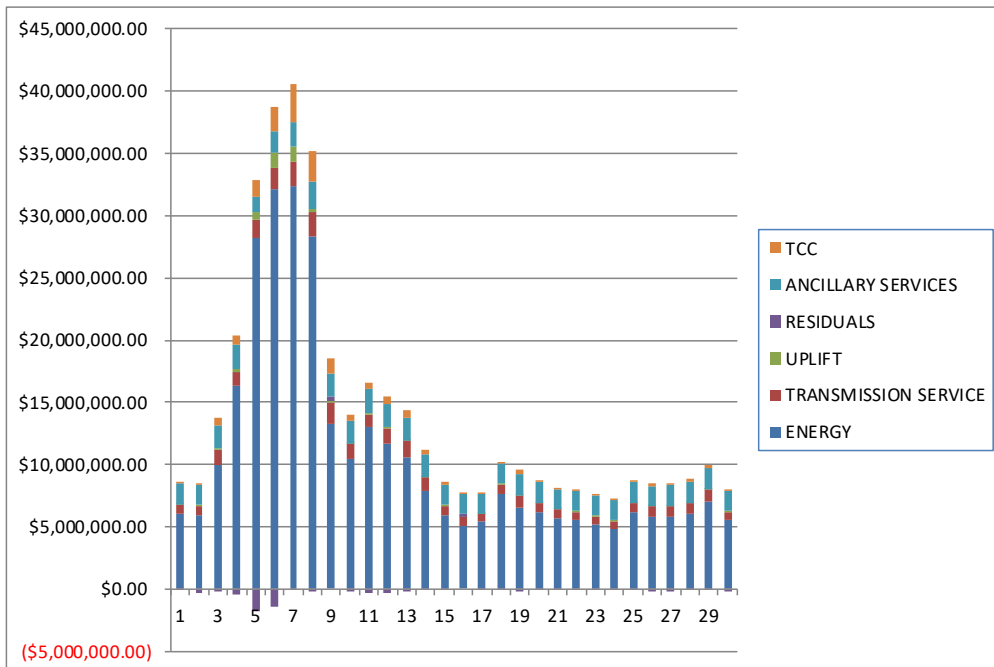
	MONDAY	TUESDAY	WEDNESDAY	THURSDAY	FRIDAY	SATURDAY	SUNDAY
					1	2	3
DAM ENERGY					\$144,562.92	\$125,937.42	\$235,957.87
DAM LOSSES					(\$244,574.05)	(\$238,412.25)	(\$416,795.00)
BALANCING ENERGY					(\$15,664.62)	(\$60,632.81)	(\$69,901.24)
BALANCING LOSSES					\$2,145.14	\$14,763.53	\$17,640.63
BALANCING CONGESTION					\$8,518.49	(\$62,730.61)	\$31,168.73
FINACIAL IMPACT CHARGE					\$0.00	\$0.00	\$0.00
	4	5	6	7	8	9	10
DAM ENERGY	\$303,110.56	\$587,512.78	\$635,330.83	\$602,113.73	\$519,406.18	\$335,165.28	\$255,358.74
DAM LOSSES	(\$560,728.35)	(\$783,125.96)	(\$909,063.59)	(\$988,991.24)	(\$895,773.63)	(\$602,303.05)	(\$467,768.82)
BALANCING ENERGY	(\$45,331.25)	(\$984,722.77)	(\$362,456.75)	(\$188,704.84)	\$1,169.92	(\$78,244.05)	(\$69,412.73)
BALANCING LOSSES	\$5,715.98	(\$205,611.13)	(\$161,773.73)	(\$24,950.14)	(\$45,160.41)	\$15,289.23	\$27,473.81
BALANCING CONGESTION	(\$172,796.66)	(\$438,813.58)	(\$556,462.39)	\$505,187.60	\$219,931.15	\$795,129.97	\$22,393.00
FINACIAL IMPACT CHARGE	\$0.00	(\$490.26)	\$0.00	(\$1,360.22)	(\$2,152.31)	\$0.00	\$0.00
	11	12	13	14	15	16	17
DAM ENERGY	\$256,860.76	\$249,135.79	\$182,028.23	\$136,442.88	\$134,618.13	\$98,833.76	\$114,061.64
DAM LOSSES	(\$440,858.69)	(\$412,243.90)	(\$283,599.78)	(\$219,526.71)	(\$212,083.29)	(\$172,895.78)	(\$202,450.63)
BALANCING ENERGY	(\$86,834.13)	(\$35,450.52)	(\$19,530.67)	\$4.18	(\$17,981.25)	(\$12,353.45)	(\$18,094.90)
BALANCING LOSSES	(\$1,398.23)	(\$8,268.91)	(\$30,887.69)	(\$15,947.37)	\$3,691.87	(\$47.45)	\$4,061.08
BALANCING CONGESTION	\$24,876.78	(\$128,583.78)	(\$35,245.37)	(\$31,295.94)	\$10,408.92	\$282,952.59	\$39,235.50
FINACIAL IMPACT CHARGE	\$0.00	\$0.00	\$0.00	\$0.00	\$0.00	\$0.00	\$0.00
	18	19	20	21	22	23	24
DAM ENERGY	\$170,899.55	\$151,173.20	\$159,337.46	\$153,876.53	\$137,720.41	\$107,946.49	\$106,025.12
DAM LOSSES	(\$306,452.19)	(\$259,067.37)	(\$274,463.95)	(\$266,612.69)	(\$231,447.80)	(\$203,858.39)	(\$196,744.77)
BALANCING ENERGY	(\$27,929.44)	(\$14,784.81)	(\$1,158.39)	\$15,678.72	\$17,109.87	(\$52,115.87)	(\$102,133.74)
BALANCING LOSSES	(\$7,527.58)	\$4,828.67	(\$3,178.41)	\$3,557.19	\$335.36	(\$3,729.21)	\$1,914.92
BALANCING CONGESTION	\$82,966.56	(\$21,151.25)	\$5,273.06	\$12,280.85	(\$9,866.54)	(\$1,673.89)	\$443.50
FINACIAL IMPACT CHARGE	\$0.00	\$0.00	\$0.00	\$0.00	\$0.00	\$0.00	\$0.00
	25	26	27	28	29	30	
DAM ENERGY	\$145,755.21	\$177,340.12	\$179,179.51	\$183,972.67	\$209,684.25	\$142,413.08	
DAM LOSSES	(\$266,403.20)	(\$290,319.39)	(\$296,273.90)	(\$295,172.30)	(\$339,301.43)	(\$273,592.68)	
BALANCING ENERGY	(\$166,504.73)	(\$112,827.77)	(\$105,657.56)	(\$123,635.76)	(\$128,690.27)	(\$101,738.05)	
BALANCING LOSSES	(\$2,059.48)	\$425.25	\$2,024.52	(\$4,883.70)	(\$5,900.07)	(\$4,858.92)	
BALANCING CONGESTION	\$26,441.13	(\$32,839.31)	(\$57,141.18)	(\$16,852.19)	\$37,324.14	(\$3,092.31)	
FINACIAL IMPACT CHARGE	\$0.00	\$0.00	\$0.00	\$0.00	\$0.00	\$0.00	



SETTLEMENTS REPORT
September 2023 Settlement Adjustment
February 7, 2024

Initial Settlement – Market Costs Analysis

	MONDAY	TUESDAY	WEDNESDAY	THURSDAY	FRIDAY	SATURDAY	SUNDAY
					1	2	3
ENERGY					\$6,021,792.24	\$5,951,230.67	\$9,978,550.41
TRANSMISSION SERVICE					\$728,178.32	\$691,497.41	\$1,185,528.17
UPLIFT					\$57,393.31	\$78,239.11	\$201,592.22
RESIDUALS					(\$107,149.79)	(\$265,589.92)	(\$196,721.68)
ANCILLARY SERVICES					\$1,666,478.98	\$1,622,988.63	\$1,754,664.33
TCC					\$115,056.97	\$175,923.86	\$694,288.29
	4	5	6	7	8	9	10
ENERGY	\$16,362,599.66	\$28,149,904.49	\$32,077,423.26	\$32,316,133.92	\$28,357,086.96	\$13,266,316.88	\$10,458,875.57
TRANSMISSION SERVICE	\$1,120,056.17	\$1,498,766.94	\$1,767,194.28	\$2,061,742.88	\$1,955,919.13	\$1,677,556.91	\$1,169,929.94
UPLIFT	\$211,824.16	\$694,237.81	\$1,210,786.71	\$1,173,964.58	\$199,141.49	\$99,753.12	\$37,404.61
RESIDUALS	(\$472,266.86)	(\$1,832,194.61)	(\$1,368,054.70)	(\$108,861.07)	(\$252,887.76)	\$426,028.51	(\$234,384.00)
ANCILLARY SERVICES	\$1,912,732.84	\$1,196,530.21	\$1,753,198.66	\$2,010,718.99	\$2,258,433.05	\$1,847,063.46	\$1,802,885.89
TCC	\$788,410.74	\$1,366,759.18	\$1,929,673.08	\$2,953,196.20	\$2,444,370.79	\$1,246,348.09	\$575,172.10
	11	12	13	14	15	16	17
ENERGY	\$13,038,471.50	\$11,706,317.40	\$10,543,015.58	\$7,935,163.36	\$5,917,584.74	\$5,060,462.55	\$5,432,570.90
TRANSMISSION SERVICE	\$980,018.50	\$1,189,661.05	\$1,331,510.27	\$1,038,945.34	\$764,124.40	\$728,859.75	\$618,883.26
UPLIFT	\$144,492.08	\$108,098.52	\$63,386.09	\$58,432.58	\$53,456.07	\$41,307.90	\$3,864.32
RESIDUALS	(\$269,824.31)	(\$360,682.06)	(\$189,773.46)	(\$124,123.96)	(\$82,094.47)	\$197,871.53	(\$64,511.73)
ANCILLARY SERVICES	\$1,869,334.51	\$1,867,849.57	\$1,850,566.41	\$1,731,778.58	\$1,635,643.42	\$1,571,371.45	\$1,587,286.04
TCC	\$566,107.86	\$581,296.57	\$638,427.77	\$428,780.31	\$215,107.75	\$201,807.88	\$54,353.12
	18	19	20	21	22	23	24
ENERGY	\$7,599,036.11	\$6,591,961.74	\$6,133,793.61	\$5,692,684.04	\$5,543,887.47	\$5,195,955.56	\$4,776,244.33
TRANSMISSION SERVICE	\$768,141.26	\$876,727.52	\$754,604.40	\$688,377.82	\$651,449.12	\$590,196.00	\$632,452.83
UPLIFT	\$72,087.79	\$83,193.20	\$61,011.21	\$44,721.43	\$67,622.42	\$118,378.79	\$174,176.43
RESIDUALS	(\$89,924.22)	(\$155,171.94)	(\$138,178.31)	(\$87,369.99)	(\$107,851.80)	(\$86,276.71)	(\$96,346.54)
ANCILLARY SERVICES	\$1,683,017.89	\$1,649,817.28	\$1,631,514.11	\$1,635,874.47	\$1,617,258.25	\$1,592,420.85	\$1,605,413.38
TCC	\$91,085.74	\$371,014.85	\$164,464.08	\$89,363.92	\$53,835.32	\$35,549.29	\$89,645.27
	25	26	27	28	29	30	
ENERGY	\$6,121,154.34	\$5,803,732.19	\$5,850,413.25	\$6,014,683.08	\$7,080,239.17	\$5,580,932.66	
TRANSMISSION SERVICE	\$749,449.81	\$792,901.89	\$766,952.17	\$867,406.21	\$888,583.18	\$643,392.79	
UPLIFT	\$55,107.96	\$65,595.19	\$71,449.87	\$63,523.36	\$51,624.91	\$43,784.11	
RESIDUALS	(\$105,822.22)	(\$146,451.84)	(\$154,290.68)	(\$116,032.15)	(\$97,484.41)	(\$142,934.22)	
ANCILLARY SERVICES	\$1,657,822.58	\$1,629,323.41	\$1,621,536.44	\$1,638,704.17	\$1,667,036.45	\$1,597,844.13	
TCC	\$150,180.60	\$181,469.40	\$125,441.14	\$306,923.67	\$331,008.78	\$123,433.69	



SETTLEMENTS REPORT
September 2023 Settlement Adjustment
February 7, 2024

4-Month Settlement Adjustment – Market Costs Analysis

	MONDAY	TUESDAY	WEDNESDAY	THURSDAY	FRIDAY	SATURDAY	SUNDAY
					1	2	3
ENERGY					\$5,809,610.63	\$5,695,708.45	\$9,705,638.42
TRANSMISSION SERVICE					\$716,144.65	\$678,137.15	\$1,171,754.39
UPLIFT					\$57,393.87	\$78,239.13	\$201,595.74
RESIDUALS					(\$105,012.12)	(\$221,074.72)	(\$201,929.01)
ANCILLARY SERVICES					\$1,650,609.97	\$1,605,543.73	\$1,736,827.02
TCC					\$115,056.97	\$175,923.86	\$694,288.29
	4	5	6	7	8	9	10
ENERGY	\$16,021,778.76	\$26,858,173.14	\$31,052,541.89	\$31,593,951.15	\$28,002,370.99	\$12,845,948.28	\$10,209,150.47
TRANSMISSION SERVICE	\$1,106,647.59	\$1,482,944.17	\$1,752,840.78	\$2,048,877.72	\$1,943,452.88	\$1,663,875.41	\$1,157,387.53
UPLIFT	\$211,823.15	\$613,348.75	\$1,210,751.23	\$1,173,992.42	\$199,083.09	\$100,003.13	\$37,384.31
RESIDUALS	(\$470,029.72)	(\$1,825,250.92)	(\$1,354,425.63)	(\$96,705.11)	(\$202,579.10)	\$465,037.38	(\$231,956.00)
ANCILLARY SERVICES	\$1,895,455.94	\$1,176,070.47	\$1,734,596.12	\$1,994,073.18	\$2,242,109.08	\$1,829,317.95	\$1,786,460.38
TCC	\$788,410.74	\$1,366,759.18	\$1,929,673.08	\$2,953,196.20	\$2,444,370.79	\$1,246,348.09	\$575,172.10
	11	12	13	14	15	16	17
ENERGY	\$12,667,043.66	\$11,224,212.11	\$9,978,418.86	\$7,618,097.00	\$5,751,511.24	\$4,934,771.80	\$5,288,376.10
TRANSMISSION SERVICE	\$966,358.77	\$1,171,195.54	\$1,313,422.65	\$1,026,648.27	\$753,867.83	\$720,518.52	\$608,110.73
UPLIFT	\$144,454.96	\$108,098.53	\$63,460.46	\$58,432.59	\$53,456.02	\$41,254.80	\$3,864.32
RESIDUALS	(\$247,353.51)	(\$335,411.32)	(\$187,235.28)	(\$130,322.96)	(\$81,345.62)	\$196,489.67	(\$63,187.31)
ANCILLARY SERVICES	\$1,851,310.35	\$1,843,481.74	\$1,826,525.87	\$1,715,557.11	\$1,622,182.41	\$1,560,333.09	\$1,573,131.40
TCC	\$566,107.86	\$581,296.57	\$638,427.77	\$428,780.31	\$215,107.75	\$201,807.88	\$54,353.12
	18	19	20	21	22	23	24
ENERGY	\$7,336,572.40	\$6,260,171.97	\$5,882,754.50	\$5,477,219.61	\$5,330,535.02	\$5,263,549.39	\$4,870,873.69
TRANSMISSION SERVICE	\$755,645.40	\$860,799.64	\$741,549.03	\$677,280.76	\$639,782.77	\$592,707.29	\$636,421.73
UPLIFT	\$72,780.60	\$83,193.20	\$61,559.18	\$44,721.42	\$67,624.84	\$124,462.88	\$175,227.45
RESIDUALS	(\$88,043.10)	(\$139,001.56)	(\$114,190.23)	(\$81,219.40)	(\$86,148.70)	(\$153,430.87)	(\$190,494.97)
ANCILLARY SERVICES	\$1,666,502.28	\$1,628,814.50	\$1,614,100.30	\$1,621,261.62	\$1,601,870.23	\$1,596,057.52	\$1,610,921.82
TCC	\$91,085.74	\$371,014.85	\$164,464.08	\$89,363.92	\$53,835.32	\$35,549.29	\$89,645.27
	25	26	27	28	29	30	
ENERGY	\$6,278,709.99	\$5,916,371.31	\$5,973,991.10	\$6,155,231.40	\$7,209,678.86	\$5,678,881.91	
TRANSMISSION SERVICE	\$755,340.21	\$798,110.69	\$772,305.43	\$873,680.94	\$893,320.74	\$647,217.96	
UPLIFT	\$55,107.97	\$65,595.20	\$71,449.89	\$63,523.35	\$51,624.91	\$43,784.10	
RESIDUALS	(\$262,771.07)	(\$258,221.10)	(\$277,868.69)	(\$256,571.36)	(\$226,883.38)	(\$240,868.88)	
ANCILLARY SERVICES	\$1,665,925.56	\$1,636,488.80	\$1,628,907.93	\$1,647,305.16	\$1,673,599.51	\$1,603,245.41	
TCC	\$150,180.60	\$181,469.40	\$125,441.14	\$306,923.67	\$331,008.78	\$123,433.69	

