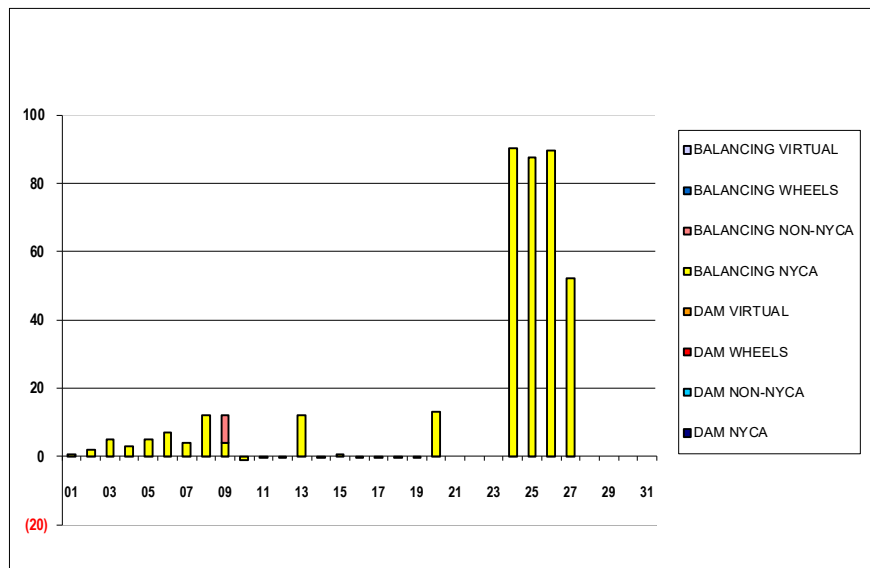


SETTLEMENTS REPORT
 October 2023 Settlement Adjustment
 March 7, 2024

Settlement Adjustment – Market Supply Delta Analysis

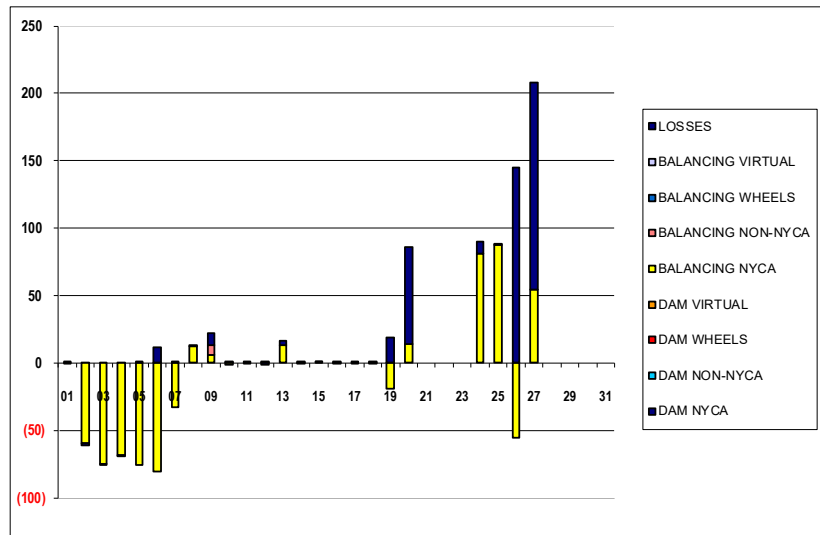
	MONDAY	TUESDAY	WEDNESDAY	THURSDAY	FRIDAY	SATURDAY	SUNDAY
DAM NYCA							1
DAM NON-NYCA							0
DAM WHEELS							0
DAM VIRTUAL							0
BALANCING NYCA							1
BALANCING NON-NYCA							0
BALANCING WHEELS							0
BALANCING VIRTUAL							0
	2	3	4	5	6	7	8
DAM NYCA	0	0	0	0	0	0	0
DAM NON-NYCA	0	0	0	0	0	0	0
DAM WHEELS	0	0	0	0	0	0	0
DAM VIRTUAL	0	0	0	0	0	0	0
BALANCING NYCA	2	5	3	5	7	4	12
BALANCING NON-NYCA	0	0	0	0	0	0	0
BALANCING WHEELS	0	0	0	0	0	0	0
BALANCING VIRTUAL	0	0	0	0	0	0	0
	9	10	11	12	13	14	15
DAM NYCA	0	0	0	0	0	0	0
DAM NON-NYCA	0	0	0	0	0	0	0
DAM WHEELS	0	0	0	0	0	0	0
DAM VIRTUAL	0	0	0	0	0	0	0
BALANCING NYCA	4	(1)	(1)	(0)	12	(0)	1
BALANCING NON-NYCA	8	0	0	0	0	0	0
BALANCING WHEELS	0	0	0	0	0	0	0
BALANCING VIRTUAL	0	0	0	0	0	0	0
	16	17	18	19	20	21	22
DAM NYCA	0	0	0	0	0	0	0
DAM NON-NYCA	0	0	0	0	0	0	0
DAM WHEELS	0	0	0	0	0	0	0
DAM VIRTUAL	0	0	0	0	0	0	0
BALANCING NYCA	(1)	(1)	(0)	(0)	13	0	0
BALANCING NON-NYCA	0	0	0	0	0	0	0
BALANCING WHEELS	0	0	0	0	0	0	0
BALANCING VIRTUAL	0	0	0	0	0	0	0
	23	24	25	26	27	28	29
DAM NYCA	0	0	0	0	0	0	0
DAM NON-NYCA	0	0	0	0	0	0	0
DAM WHEELS	0	0	0	0	0	0	0
DAM VIRTUAL	0	0	0	0	0	0	0
BALANCING NYCA	0	90	88	90	52	0	0
BALANCING NON-NYCA	0	0	0	0	0	0	0
BALANCING WHEELS	0	0	0	0	0	0	0
BALANCING VIRTUAL	0	0	0	0	0	0	0
	30	31					
DAM NYCA	0	0					
DAM NON-NYCA	0	0					
DAM WHEELS	0	0					
DAM VIRTUAL	0	0					
BALANCING NYCA	0	0					
BALANCING NON-NYCA	0	0					
BALANCING WHEELS	0	0					
BALANCING VIRTUAL	0	0					



SETTLEMENTS REPORT
 October 2023 Settlement Adjustment
 March 7, 2024

Settlement Adjustment – Market Withdrawals Delta Analysis

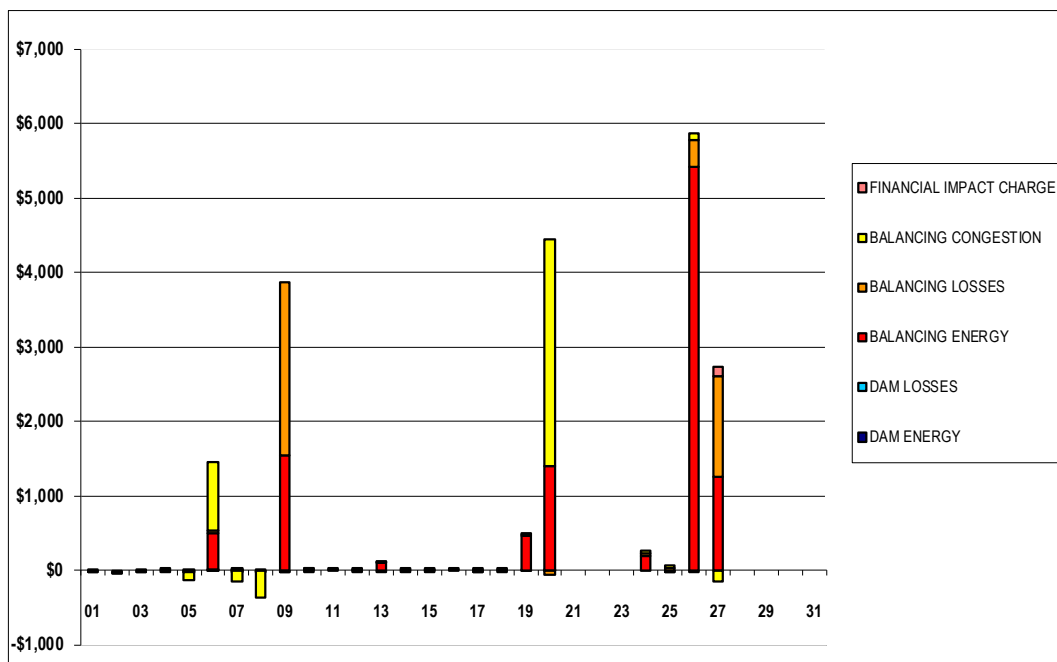
	MONDAY	TUESDAY	WEDNESDAY	THURSDAY	FRIDAY	SATURDAY	SUNDAY
DAM NYCA							1
DAM NON-NYCA							0
DAM WHEELS							0
DAM VIRTUAL							0
BALANCING NYCA							1
BALANCING NON-NYCA							0
BALANCING WHEELS							0
BALANCING VIRTUAL							0
UFE/LOSSES							(0)
2	3	4	5	6	7	8	
DAM NYCA	0	0	0	0	0	0	0
DAM NON-NYCA	0	0	0	0	0	0	0
DAM WHEELS	0	0	0	0	0	0	0
DAM VIRTUAL	0	0	0	0	0	0	0
BALANCING NYCA	(60)	(75)	(69)	(76)	(80)	(33)	12
BALANCING NON-NYCA	0	0	0	0	0	0	0
BALANCING WHEELS	0	0	0	0	0	0	0
BALANCING VIRTUAL	0	0	0	0	0	0	0
UFE/LOSSES	(1)	(0)	(1)	0	12	0	0
9	10	11	12	13	14	15	
DAM NYCA	0	0	0	0	0	0	0
DAM NON-NYCA	0	0	0	0	0	0	0
DAM WHEELS	0	0	0	0	0	0	0
DAM VIRTUAL	0	0	0	0	0	0	0
BALANCING NYCA	6	(1)	(1)	1	13	(0)	0
BALANCING NON-NYCA	7	0	0	0	0	0	0
BALANCING WHEELS	0	0	0	0	0	0	0
BALANCING VIRTUAL	0	0	0	0	0	0	0
UFE/LOSSES	9	0	0	(2)	4	0	0
16	17	18	19	20	21	22	
DAM NYCA	0	0	0	0	0	0	0
DAM NON-NYCA	0	0	0	0	0	0	0
DAM WHEELS	0	0	0	0	0	0	0
DAM VIRTUAL	0	0	0	0	0	0	0
BALANCING NYCA	(1)	(1)	(1)	(19)	14	0	0
BALANCING NON-NYCA	0	0	0	0	0	0	0
BALANCING WHEELS	0	0	0	0	0	0	0
BALANCING VIRTUAL	0	0	0	0	0	0	0
UFE/LOSSES	0	0	0	19	72	0	0
23	24	25	26	27	28	29	
DAM NYCA	0	0	0	0	0	0	0
DAM NON-NYCA	0	0	0	0	0	0	0
DAM WHEELS	0	0	0	0	0	0	0
DAM VIRTUAL	0	0	0	0	0	0	0
BALANCING NYCA	0	81	88	(55)	54	0	0
BALANCING NON-NYCA	0	0	0	0	0	0	0
BALANCING WHEELS	0	0	0	0	0	0	0
BALANCING VIRTUAL	0	0	0	0	0	0	0
UFE/LOSSES	0	9	0	145	154	0	0
30	31						
DAM NYCA	0	0					
DAM NON-NYCA	0	0					
DAM WHEELS	0	0					
DAM VIRTUAL	0	0					
BALANCING NYCA	0	0					
BALANCING NON-NYCA	0	0					
BALANCING WHEELS	0	0					
BALANCING VIRTUAL	0	0					
UFE/LOSSES	0	0					



SETTLEMENTS REPORT
 October 2023 Settlement Adjustment
 March 7, 2024

Settlement Adjustment – Market Residuals Delta Analysis

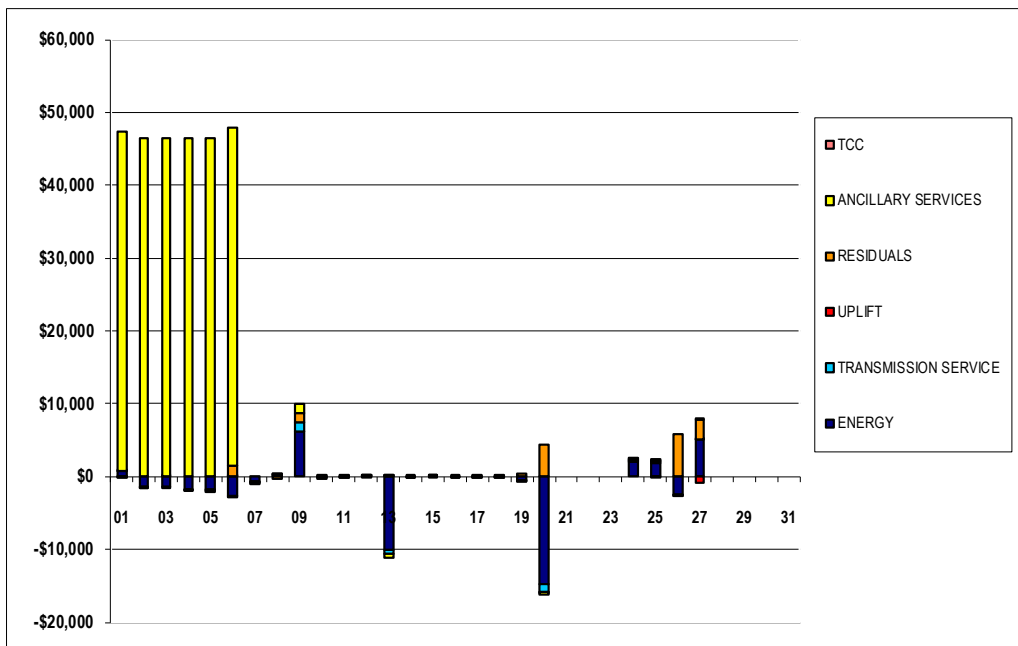
	MONDAY	TUESDAY	WEDNESDAY	THURSDAY	FRIDAY	SATURDAY	SUNDAY
							1
DAM ENERGY							\$0.00
DAM LOSSES							\$0.00
BALANCING ENERGY							(\$11.11)
BALANCING LOSSES							(\$24.33)
BALANCING CONGESTION							\$0.05
FINANCIAL IMPACT CHARGE							\$0.00
	2	3	4	5	6	7	8
DAM ENERGY	\$0.00	\$0.00	\$0.00	\$0.00	\$0.01	\$0.01	(\$0.01)
DAM LOSSES	\$0.00	\$0.00	\$0.00	(\$0.01)	\$0.01	(\$0.01)	\$0.00
BALANCING ENERGY	(\$22.33)	(\$0.75)	(\$18.80)	(\$20.25)	\$499.97	\$12.66	\$0.38
BALANCING LOSSES	(\$5.06)	\$13.93	\$7.92	\$16.51	\$32.64	\$8.84	(\$17.57)
BALANCING CONGESTION	(\$5.30)	(\$4.56)	\$5.14	(\$121.51)	\$913.44	(\$161.04)	(\$360.51)
FINANCIAL IMPACT CHARGE	\$0.00	\$0.00	\$0.00	\$0.00	\$0.00	\$0.00	\$0.00
	9	10	11	12	13	14	15
DAM ENERGY	\$0.00	(\$0.01)	\$0.00	\$0.00	(\$0.01)	(\$0.01)	(\$0.01)
DAM LOSSES	(\$0.01)	\$0.00	\$0.00	\$0.01	\$0.00	\$0.00	\$0.01
BALANCING ENERGY	\$1,542.33	\$2.70	\$0.87	\$5.82	\$99.15	\$0.75	\$0.82
BALANCING LOSSES	\$2,328.35	\$0.53	\$0.30	\$0.59	\$7.38	\$0.27	\$0.08
BALANCING CONGESTION	(\$7.84)	\$0.11	\$0.00	(\$5.51)	\$3.24	\$0.00	\$0.00
FINANCIAL IMPACT CHARGE	\$0.00	\$0.00	\$0.00	\$0.00	\$0.00	\$0.00	\$0.00
	16	17	18	19	20	21	22
DAM ENERGY	\$0.00	\$0.00	\$0.00	\$0.00	\$0.01	\$0.00	\$0.00
DAM LOSSES	\$0.00	(\$0.01)	(\$0.01)	\$0.01	\$0.00	\$0.00	\$0.00
BALANCING ENERGY	\$0.93	\$10.72	\$1.35	\$454.62	\$1,390.33	\$0.00	\$0.00
BALANCING LOSSES	\$0.21	\$0.25	\$0.19	\$27.59	(\$67.95)	\$0.00	\$0.00
BALANCING CONGESTION	\$0.00	(\$0.01)	\$0.00	\$3.38	\$3,046.32	\$0.00	\$0.00
FINANCIAL IMPACT CHARGE	\$0.00	\$0.00	\$0.00	\$0.00	\$0.00	\$0.00	\$0.00
	23	24	25	26	27	28	29
DAM ENERGY	\$0.00	\$0.00	(\$0.01)	(\$0.01)	\$0.00	\$0.00	\$0.00
DAM LOSSES	\$0.00	\$0.00	\$0.00	\$0.00	\$0.00	\$0.00	\$0.00
BALANCING ENERGY	\$0.00	\$185.46	(\$2.63)	\$5,412.74	\$1,254.30	\$0.00	\$0.00
BALANCING LOSSES	\$0.00	\$44.87	\$20.34	\$366.15	\$1,356.95	\$0.00	\$0.00
BALANCING CONGESTION	\$0.00	\$26.71	\$45.54	\$87.61	(\$161.76)	\$0.00	\$0.00
FINANCIAL IMPACT CHARGE	\$0.00	\$0.00	\$0.00	\$0.00	\$125.00	\$0.00	\$0.00
	30	31					
DAM ENERGY	\$0.00	\$0.00					
DAM LOSSES	\$0.00	\$0.00					
BALANCING ENERGY	\$0.00	\$0.00					
BALANCING LOSSES	\$0.00	\$0.00					
BALANCING CONGESTION	\$0.00	\$0.00					
FINANCIAL IMPACT CHARGE	\$0.00	\$0.00					



SETTLEMENTS REPORT
 October 2023 Settlement Adjustment
 March 7, 2024

Settlement Adjustment – Market Costs Delta Analysis

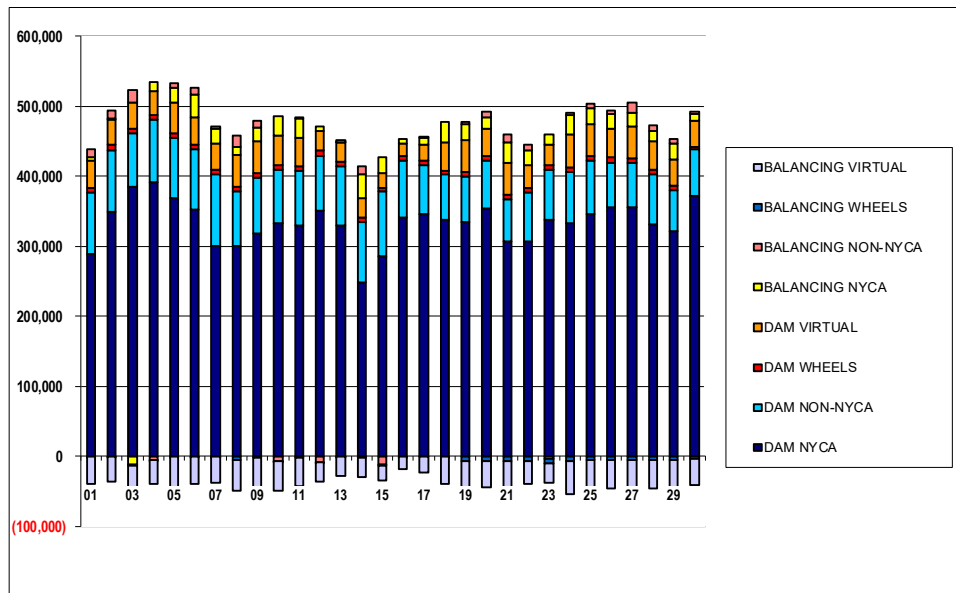
	MONDAY	TUESDAY	WEDNESDAY	THURSDAY	FRIDAY	SATURDAY	SUNDAY
ENERGY							1
TRANSMISSION SERVICE							\$852.58
UPLIFT							\$0.58
RESIDUALS							(\$0.05)
ANCILLARY SERVICES							(\$35.39)
ANCILLARY SERVICES							\$46,496.06
TCC							\$0.00
	2	3	4	5	6	7	8
ENERGY	(\$1,390.97)	(\$1,398.60)	(\$1,723.99)	(\$1,781.83)	(\$2,663.30)	(\$709.05)	\$280.59
TRANSMISSION SERVICE	(\$92.00)	(\$114.63)	(\$106.41)	(\$115.79)	(\$125.04)	(\$53.51)	\$15.11
UPLIFT	\$0.01	\$0.00	(\$0.98)	\$0.00	\$47.02	\$0.01	\$0.01
RESIDUALS	(\$32.69)	\$8.62	(\$5.74)	(\$125.26)	\$1,446.07	(\$139.54)	(\$377.71)
ANCILLARY SERVICES	\$46,392.61	\$46,369.29	\$46,379.89	\$46,368.24	\$46,366.98	(\$55.49)	\$20.03
TCC	\$0.00	\$0.00	\$0.00	\$0.00	\$0.00	\$0.00	\$0.00
	9	10	11	12	13	14	15
ENERGY	\$6,195.26	(\$34.58)	(\$15.77)	(\$11.50)	(\$10,003.74)	(\$13.81)	\$14.45
TRANSMISSION SERVICE	\$1,221.55	(\$72.69)	(\$2.04)	\$0.45	(\$577.58)	(\$0.86)	(\$0.01)
UPLIFT	\$0.00	\$0.00	\$0.00	(\$0.02)	\$2.53	(\$0.01)	\$0.00
RESIDUALS	\$1,364.22	\$3.33	\$1.17	\$0.91	\$109.76	\$1.01	\$0.90
ANCILLARY SERVICES	\$1,217.06	(\$1.65)	(\$0.98)	\$2.56	(\$628.77)	(\$0.81)	\$0.77
TCC	\$0.00	\$0.00	\$0.00	\$0.00	\$0.00	\$0.00	\$0.00
	16	17	18	19	20	21	22
ENERGY	(\$12.89)	(\$23.36)	(\$14.32)	(\$496.08)	(\$14,767.38)	\$0.00	\$0.00
TRANSMISSION SERVICE	(\$2.05)	(\$1.55)	(\$0.77)	(\$30.19)	(\$994.60)	\$0.00	\$0.00
UPLIFT	\$0.00	\$0.00	\$0.00	\$0.00	(\$88.24)	\$0.00	\$0.00
RESIDUALS	\$1.14	\$10.95	\$1.53	\$485.60	\$4,368.71	\$0.00	\$0.00
ANCILLARY SERVICES	(\$0.90)	(\$1.55)	(\$0.85)	(\$26.10)	(\$396.56)	\$0.00	\$0.00
TCC	\$0.00	\$0.00	\$0.00	\$0.00	\$0.00	\$0.00	\$0.00
	23	24	25	26	27	28	29
ENERGY	\$0.00	\$2,040.18	\$1,936.73	(\$2,447.50)	\$5,023.18	\$0.00	\$0.00
TRANSMISSION SERVICE	\$0.00	\$123.33	\$133.23	(\$84.23)	\$158.19	\$0.00	\$0.00
UPLIFT	\$0.00	\$0.00	(\$0.01)	\$0.00	(\$865.04)	\$0.00	\$0.00
RESIDUALS	\$0.00	\$257.04	\$63.24	\$5,866.49	\$2,541.33	\$0.00	\$0.00
ANCILLARY SERVICES	\$0.00	\$138.82	\$146.65	(\$40.84)	\$287.90	\$0.00	\$0.00
TCC	\$0.00	\$0.00	\$0.00	\$0.00	\$0.00	\$0.00	\$0.00
	30	31					
ENERGY	\$0.00	\$0.00					
TRANSMISSION SERVICE	\$0.00	\$0.00					
UPLIFT	\$0.00	\$0.00					
RESIDUALS	\$0.00	\$0.00					
ANCILLARY SERVICES	\$0.00	\$0.00					
TCC	\$0.00	\$0.00					



SETTLEMENTS REPORT
 October 2023 Settlement Adjustment
 March 7, 2024

Initial Settlement – Market Supply Analysis

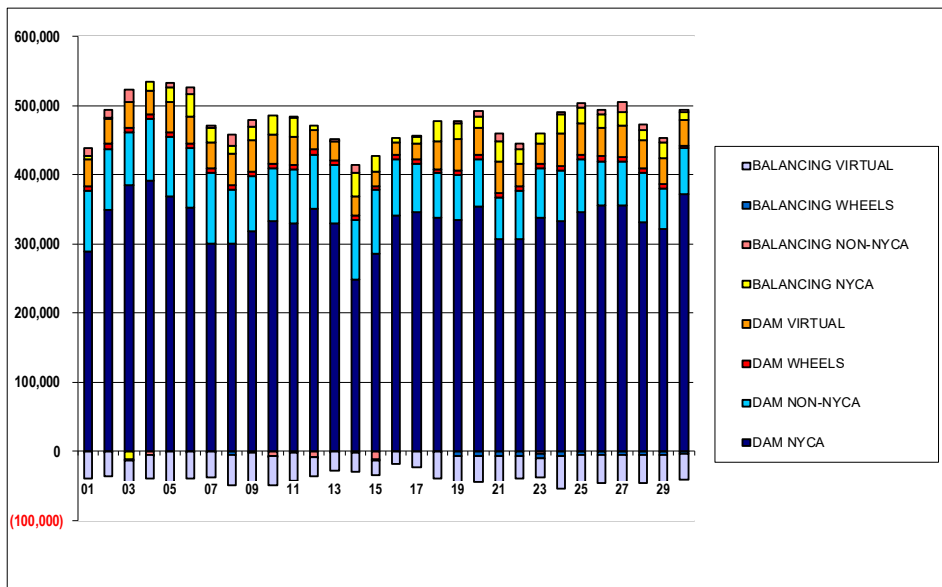
	MONDAY	TUESDAY	WEDNESDAY	THURSDAY	FRIDAY	SATURDAY	SUNDAY
DAM NYCA							1
DAM NON-NYCA							289,564
DAM WHEELS							6,708
DAM VIRTUAL							38,790
BALANCING NYCA							5,173
BALANCING NON-NYCA							10,773
BALANCING WHEELS							(519)
BALANCING VIRTUAL							(38,790)
	2	3	4	5	6	7	8
DAM NYCA	349,666	385,682	391,306	369,446	352,480	301,021	300,748
DAM NON-NYCA	88,104	75,359	90,199	84,740	86,464	102,049	78,291
DAM WHEELS	6,808	6,758	6,458	6,408	6,408	6,483	6,408
DAM VIRTUAL	35,765	38,067	33,940	44,486	38,192	36,664	44,469
BALANCING NYCA	2,551	(12,005)	13,105	21,787	33,551	21,316	12,746
BALANCING NON-NYCA	10,408	17,488	(5,045)	6,499	9,914	3,133	15,614
BALANCING WHEELS	(331)	(1,159)	(50)	(239)	(801)	(342)	(5,340)
BALANCING VIRTUAL	(35,765)	(38,067)	(33,940)	(44,486)	(38,192)	(36,664)	(44,469)
	9	10	11	12	13	14	15
DAM NYCA	318,506	332,579	329,250	351,155	330,241	247,694	285,731
DAM NON-NYCA	79,678	76,992	78,994	78,351	83,573	87,057	92,135
DAM WHEELS	6,408	6,706	6,458	7,093	7,008	6,408	5,607
DAM VIRTUAL	45,474	41,653	40,345	27,924	26,782	27,371	20,316
BALANCING NYCA	19,384	27,727	27,772	6,044	672	34,321	23,090
BALANCING NON-NYCA	9,670	(6,152)	(2,327)	(8,334)	3,782	11,697	(11,134)
BALANCING WHEELS	(2,534)	(972)	580	(610)	(971)	(2,698)	(2,483)
BALANCING VIRTUAL	(45,474)	(41,653)	(40,345)	(27,924)	(26,782)	(27,371)	(20,316)
	16	17	18	19	20	21	22
DAM NYCA	340,667	346,339	337,560	335,159	354,386	306,386	307,494
DAM NON-NYCA	80,995	69,152	64,492	64,552	68,187	60,346	70,004
DAM WHEELS	6,408	6,408	6,408	6,994	6,587	6,440	6,583
DAM VIRTUAL	17,974	22,573	39,924	45,119	38,611	45,198	32,526
BALANCING NYCA	6,734	11,010	29,333	22,807	16,486	29,388	19,765
BALANCING NON-NYCA	(427)	305	(94)	3,498	7,522	11,604	8,312
BALANCING WHEELS	0	0	0	(6,994)	(6,387)	(6,440)	(6,583)
BALANCING VIRTUAL	(17,974)	(22,573)	(39,924)	(45,119)	(38,611)	(45,198)	(32,526)
	23	24	25	26	27	28	29
DAM NYCA	338,221	332,584	345,197	355,131	355,118	331,272	322,234
DAM NON-NYCA	71,797	74,315	76,379	64,754	63,881	71,701	57,976
DAM WHEELS	6,658	6,433	6,596	6,565	6,408	6,433	6,508
DAM VIRTUAL	27,974	46,956	45,562	41,794	45,923	40,174	37,982
BALANCING NYCA	15,361	27,584	23,405	20,217	19,254	15,448	22,403
BALANCING NON-NYCA	(2,932)	3,366	6,778	5,664	15,164	7,196	6,259
BALANCING WHEELS	(6,514)	(6,433)	(5,904)	(4,640)	(5,591)	(5,699)	(5,741)
BALANCING VIRTUAL	(27,974)	(46,956)	(45,562)	(41,794)	(45,923)	(40,174)	(37,982)
	30	31					
DAM NYCA	371,629	376,856					
DAM NON-NYCA	66,812	69,885					
DAM WHEELS	4,130	6,453					
DAM VIRTUAL	37,327	36,064					
BALANCING NYCA	9,127	3,357					
BALANCING NON-NYCA	3,190	(2,743)					
BALANCING WHEELS	(3,786)	(5,143)					
BALANCING VIRTUAL	(37,327)	(36,064)					



SETTLEMENTS REPORT
 October 2023 Settlement Adjustment
 March 7, 2024

4-Month Settlement Adjustment – Market Supply Analysis

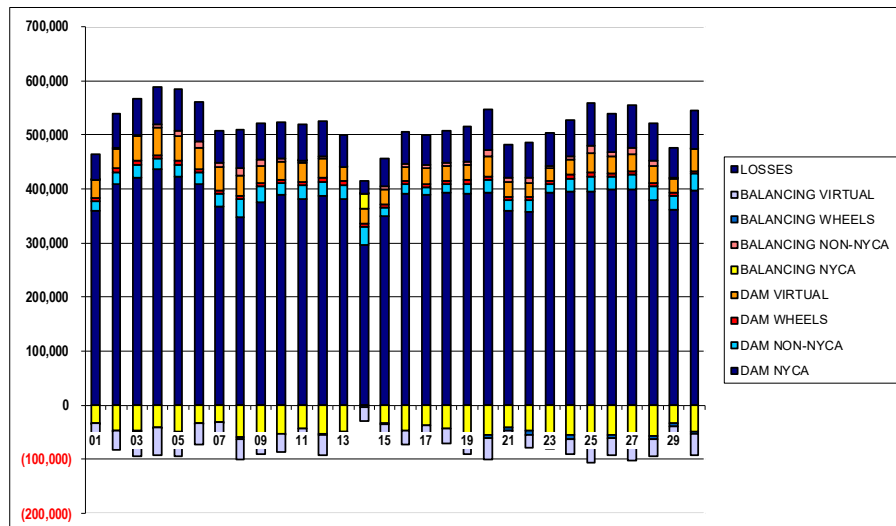
	MONDAY	TUESDAY	WEDNESDAY	THURSDAY	FRIDAY	SATURDAY	SUNDAY
DAM NYCA							1
DAM NON-NYCA							289,564
DAM WHEELS							87,161
DAM VIRTUAL							6,708
BALANCING NYCA							38,790
BALANCING NON-NYCA							5,207
BALANCING WHEELS							10,773
BALANCING VIRTUAL							(519)
							(38,790)
	2	3	4	5	6	7	8
DAM NYCA	349,666	385,682	391,306	369,446	352,480	301,021	300,748
DAM NON-NYCA	88,104	75,359	90,199	84,740	86,464	102,049	78,291
DAM WHEELS	6,808	6,758	6,458	6,408	6,408	6,483	6,408
DAM VIRTUAL	35,765	38,067	33,940	44,486	38,192	36,664	44,469
BALANCING NYCA	2,513	(12,140)	12,871	21,498	33,277	21,098	12,506
BALANCING NON-NYCA	10,408	17,488	(5,045)	6,499	9,914	3,133	15,614
BALANCING WHEELS	(331)	(1,159)	(50)	(239)	(801)	(342)	(5,340)
BALANCING VIRTUAL	(35,765)	(38,067)	(33,940)	(44,486)	(38,192)	(36,664)	(44,469)
	9	10	11	12	13	14	15
DAM NYCA	318,506	332,579	329,250	351,155	330,241	247,694	285,731
DAM NON-NYCA	79,678	76,992	78,994	78,351	83,573	87,057	92,135
DAM WHEELS	6,408	6,706	6,458	7,093	7,008	6,408	5,607
DAM VIRTUAL	45,474	41,653	40,345	27,924	26,782	27,371	20,316
BALANCING NYCA	19,147	27,593	27,647	5,938	895	34,654	23,361
BALANCING NON-NYCA	9,670	(6,152)	(2,327)	(8,334)	3,782	11,697	(11,134)
BALANCING WHEELS	(2,534)	(972)	580	(610)	(971)	(2,698)	(2,483)
BALANCING VIRTUAL	(45,474)	(41,653)	(40,345)	(27,924)	(26,782)	(27,371)	(20,316)
	16	17	18	19	20	21	22
DAM NYCA	340,667	346,339	337,560	335,159	354,386	306,386	307,494
DAM NON-NYCA	80,995	69,152	64,492	64,552	68,187	60,346	70,004
DAM WHEELS	6,408	6,408	6,408	6,994	6,587	6,440	6,583
DAM VIRTUAL	17,974	22,573	39,924	45,119	38,611	45,198	32,526
BALANCING NYCA	6,415	11,078	29,435	22,984	16,564	29,581	19,758
BALANCING NON-NYCA	(427)	305	(94)	3,498	7,522	11,604	8,312
BALANCING WHEELS	0	0	0	(6,994)	(6,387)	(6,440)	(6,583)
BALANCING VIRTUAL	(17,974)	(22,573)	(39,924)	(45,119)	(38,611)	(45,198)	(32,526)
	23	24	25	26	27	28	29
DAM NYCA	338,221	332,584	345,197	355,131	355,118	331,272	322,234
DAM NON-NYCA	71,797	74,315	76,379	64,754	63,881	71,701	57,976
DAM WHEELS	6,658	6,433	6,596	6,565	6,408	6,433	6,508
DAM VIRTUAL	27,974	46,956	45,562	41,794	45,923	40,174	37,982
BALANCING NYCA	15,163	27,295	23,141	19,893	18,925	15,229	22,250
BALANCING NON-NYCA	(2,932)	3,366	6,778	5,664	15,164	7,196	6,259
BALANCING WHEELS	(6,514)	(6,433)	(5,904)	(4,640)	(5,591)	(5,699)	(5,741)
BALANCING VIRTUAL	(27,974)	(46,956)	(45,562)	(41,794)	(45,923)	(40,174)	(37,982)
	30	31					
DAM NYCA	371,629	376,856					
DAM NON-NYCA	66,812	69,885					
DAM WHEELS	4,130	6,453					
DAM VIRTUAL	37,327	36,064					
BALANCING NYCA	11,006	4,888					
BALANCING NON-NYCA	3,190	(2,743)					
BALANCING WHEELS	(3,786)	(5,143)					
BALANCING VIRTUAL	(37,327)	(36,064)					



SETTLEMENTS REPORT
 October 2023 Settlement Adjustment
 March 7, 2024

Initial Settlement – Market Withdrawals Analysis

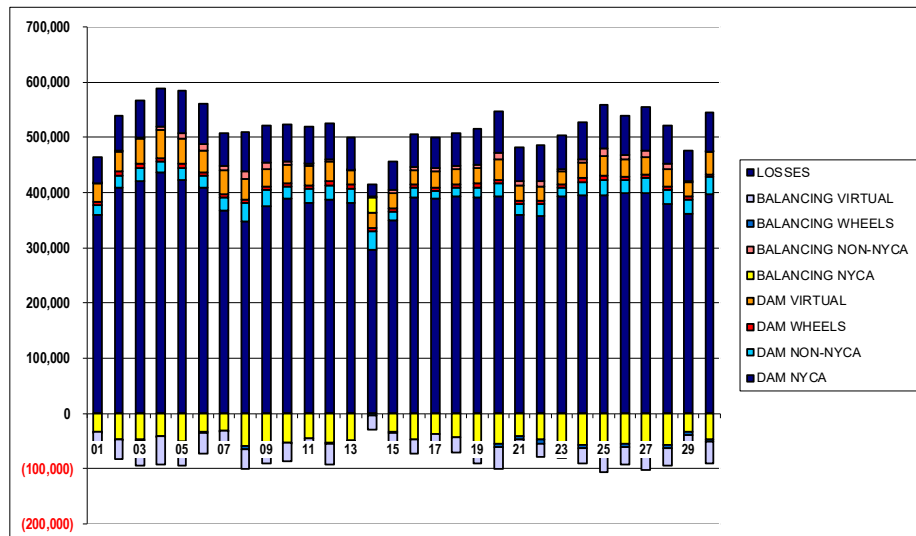
	MONDAY	TUESDAY	WEDNESDAY	THURSDAY	FRIDAY	SATURDAY	SUNDAY
DAM NYCA							1
DAM NON-NYCA							358,883
DAM WHEELS							17,501
DAM VIRTUAL							6,708
BALANCING NYCA							32,989
BALANCING NON-NYCA							(32,491)
BALANCING WHEELS							442
BALANCING VIRTUAL							(519)
UFE/LOSSES							(32,989)
							48,336
	2	3	4	5	6	7	8
DAM NYCA	409,655	420,441	435,748	423,056	409,308	388,082	346,737
DAM NON-NYCA	21,547	24,529	20,316	22,154	20,536	22,029	34,007
DAM WHEELS	6,808	6,758	6,458	6,408	6,408	6,408	6,483
DAM VIRTUAL	35,701	46,757	51,181	44,949	39,290	43,091	36,628
BALANCING NYCA	(46,191)	(46,771)	(40,692)	(49,547)	(33,016)	(30,339)	(58,085)
BALANCING NON-NYCA	2,862	1,963	5,329	10,193	11,463	8,189	15,151
BALANCING WHEELS	(331)	(1,159)	(50)	(239)	(80)	(342)	(5,340)
BALANCING VIRTUAL	(35,701)	(46,757)	(51,181)	(44,949)	(39,290)	(43,091)	(36,628)
UFE/LOSSES	62,855	66,363	68,864	76,616	74,117	59,557	69,589
	9	10	11	12	13	14	15
DAM NYCA	375,795	388,753	381,019	387,761	381,426	297,112	349,254
DAM NON-NYCA	29,187	21,629	25,461	25,141	26,240	32,646	15,982
DAM WHEELS	6,408	6,706	6,458	7,093	7,008	6,408	5,607
DAM VIRTUAL	31,598	32,585	34,536	37,016	25,746	26,958	27,461
BALANCING NYCA	(56,220)	(52,265)	(43,770)	(53,580)	(48,124)	27,085	(32,868)
BALANCING NON-NYCA	10,613	7,409	4,943	2,179	173	1,716	6,215
BALANCING WHEELS	(2,534)	(972)	580	(610)	(971)	(2,698)	(2,483)
BALANCING VIRTUAL	(31,598)	(32,585)	(34,536)	(37,016)	(25,746)	(26,958)	(27,461)
UFE/LOSSES	67,863	65,619	66,036	65,715	58,554	22,210	51,240
	16	17	18	19	20	21	22
DAM NYCA	390,594	388,256	392,224	390,800	392,155	360,175	357,009
DAM NON-NYCA	17,743	14,828	15,999	18,435	24,122	18,757	22,019
DAM WHEELS	6,408	6,408	6,408	6,994	6,587	6,440	6,583
DAM VIRTUAL	25,490	28,540	27,382	28,862	37,881	26,669	25,458
BALANCING NYCA	(46,294)	(37,044)	(42,730)	(54,145)	(55,102)	(41,320)	(47,196)
BALANCING NON-NYCA	6,302	6,513	7,013	5,036	11,557	8,490	10,080
BALANCING WHEELS	0	0	0	(6,994)	(6,387)	(6,440)	(6,583)
BALANCING VIRTUAL	(25,490)	(28,540)	(27,382)	(28,862)	(37,881)	(26,669)	(25,458)
UFE/LOSSES	59,624	54,252	58,786	65,889	73,849	61,622	63,664
	23	24	25	26	27	28	29
DAM NYCA	392,726	394,548	394,847	398,720	398,446	379,505	360,999
DAM NON-NYCA	15,940	24,743	28,491	23,611	28,466	25,196	25,641
DAM WHEELS	6,658	6,433	6,596	6,565	6,408	6,433	6,508
DAM VIRTUAL	22,562	27,605	35,690	31,324	31,096	31,854	25,900
BALANCING NYCA	(51,924)	(55,499)	(64,301)	(55,363)	(64,376)	(57,096)	(33,746)
BALANCING NON-NYCA	4,974	6,077	13,972	7,730	11,335	10,101	822
BALANCING WHEELS	(6,514)	(6,433)	(5,904)	(4,640)	(5,591)	(5,699)	(5,741)
BALANCING VIRTUAL	(22,562)	(27,605)	(35,690)	(31,324)	(31,096)	(31,854)	(25,900)
UFE/LOSSES	60,731	67,982	78,751	71,069	79,547	67,911	55,156
	30	31					
DAM NYCA	397,444	402,000					
DAM NON-NYCA	30,991	31,926					
DAM WHEELS	4,130	6,453					
DAM VIRTUAL	40,472	41,587					
BALANCING NYCA	(48,667)	(58,556)					
BALANCING NON-NYCA	1,580	2,067					
BALANCING WHEELS	(3,786)	(5,143)					
BALANCING VIRTUAL	(40,472)	(41,587)					
UFE/LOSSES	69,431	69,918					



SETTLEMENTS REPORT
October 2023 Settlement Adjustment
March 7, 2024

4-Month Settlement Adjustment – Market Withdrawals Analysis

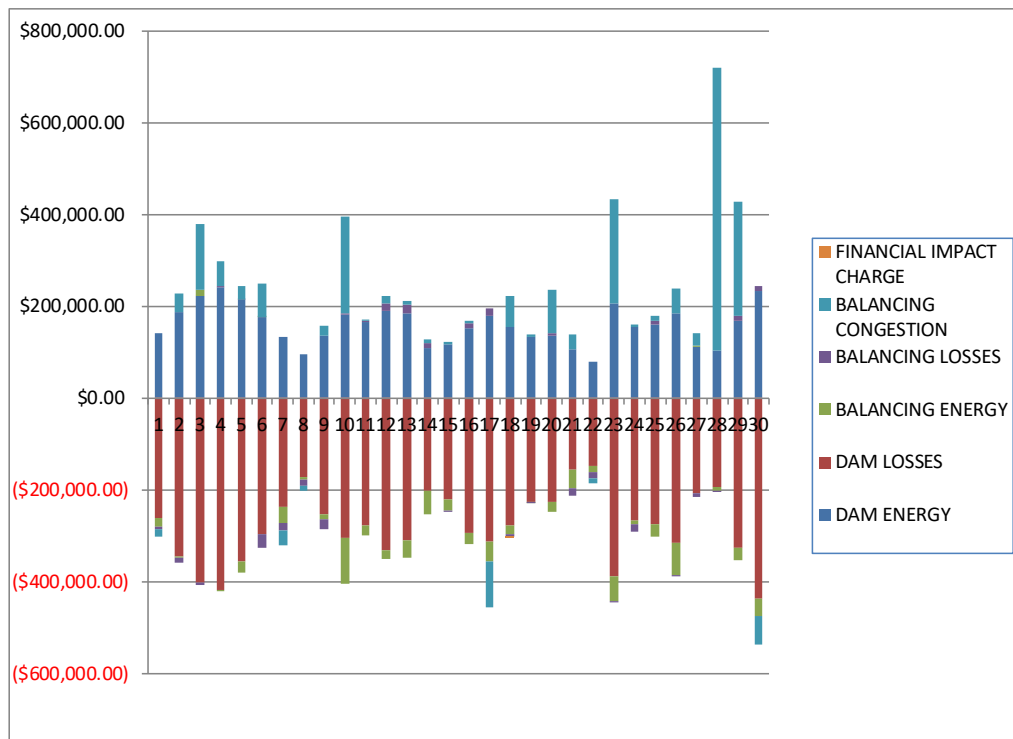
	MONDAY	TUESDAY	WEDNESDAY	THURSDAY	FRIDAY	SATURDAY	SUNDAY
							1
DAM NYCA							358,883
DAM NON-NYCA							17,501
DAM WHEELS							6,708
DAM VIRTUAL							32,989
BALANCING NYCA							(32,445)
BALANCING NON-NYCA							442
BALANCING WHEELS							(519)
BALANCING VIRTUAL							(32,989)
UFE/LOSSES							48,324
	2	3	4	5	6	7	8
DAM NYCA	409,655	420,441	435,748	423,056	409,308	368,082	346,737
DAM NON-NYCA	21,547	24,529	20,316	22,154	20,536	22,029	34,007
DAM WHEELS	6,808	6,758	6,458	6,408	6,408	6,483	6,408
DAM VIRTUAL	35,701	46,757	51,181	44,949	39,290	43,091	36,628
BALANCING NYCA	(46,233)	(46,897)	(40,928)	(49,830)	(33,304)	(30,560)	(58,334)
BALANCING NON-NYCA	2,862	1,963	5,329	10,193	11,463	8,189	15,151
BALANCING WHEELS	(331)	(1,159)	(50)	(239)	(801)	(342)	(5,340)
BALANCING VIRTUAL	(35,701)	(46,757)	(51,181)	(44,949)	(39,290)	(43,091)	(36,628)
UFE/LOSSES	62,860	66,354	68,867	76,611	74,132	59,560	69,598
	9	10	11	12	13	14	15
DAM NYCA	375,795	388,753	381,019	387,761	381,426	297,112	349,254
DAM NON-NYCA	29,187	21,629	25,461	25,141	26,240	32,646	15,982
DAM WHEELS	6,408	6,706	6,458	7,093	7,008	6,408	5,607
DAM VIRTUAL	31,598	32,585	34,536	37,016	25,746	26,958	27,461
BALANCING NYCA	(56,457)	(52,397)	(43,898)	(53,682)	(47,906)	27,443	(32,600)
BALANCING NON-NYCA	10,613	7,409	4,943	2,179	173	1,716	6,215
BALANCING WHEELS	(2,534)	(972)	580	(610)	(971)	(2,698)	(2,483)
BALANCING VIRTUAL	(31,598)	(32,585)	(34,536)	(37,016)	(25,746)	(26,958)	(27,461)
UFE/LOSSES	67,863	65,617	66,039	65,712	58,559	22,185	51,242
	16	17	18	19	20	21	22
DAM NYCA	390,594	388,256	392,224	390,800	392,155	360,175	357,009
DAM NON-NYCA	17,743	14,828	15,999	18,435	24,122	18,757	22,019
DAM WHEELS	6,408	6,408	6,408	6,994	6,587	6,440	6,583
DAM VIRTUAL	25,490	28,540	27,382	28,862	37,881	26,669	25,458
BALANCING NYCA	(46,628)	(36,976)	(42,629)	(53,958)	(55,024)	(41,134)	(47,201)
BALANCING NON-NYCA	6,302	6,513	7,013	5,036	11,557	8,490	10,080
BALANCING WHEELS	0	0	0	(6,994)	(6,387)	(6,440)	(6,583)
BALANCING VIRTUAL	(25,490)	(28,540)	(27,382)	(28,862)	(37,881)	(26,669)	(25,458)
UFE/LOSSES	59,639	54,254	58,786	65,881	73,849	61,629	63,660
	23	24	25	26	27	28	29
DAM NYCA	392,726	394,548	394,847	398,720	398,446	379,505	360,999
DAM NON-NYCA	15,940	24,743	28,491	23,611	28,466	25,196	25,641
DAM WHEELS	6,658	6,433	6,596	6,565	6,408	6,433	6,508
DAM VIRTUAL	22,562	27,605	35,690	31,324	31,096	31,854	25,900
BALANCING NYCA	(52,113)	(55,786)	(64,570)	(55,687)	(64,703)	(57,319)	(33,908)
BALANCING NON-NYCA	4,974	6,077	13,972	7,730	11,335	10,101	822
BALANCING WHEELS	(6,514)	(6,433)	(5,904)	(4,640)	(5,591)	(5,699)	(5,741)
BALANCING VIRTUAL	(22,562)	(27,605)	(35,690)	(31,324)	(31,096)	(31,854)	(25,900)
UFE/LOSSES	60,721	67,979	78,756	71,068	79,544	67,915	55,165
	30	31					
DAM NYCA	397,444	402,000					
DAM NON-NYCA	30,991	31,926					
DAM WHEELS	4,130	6,453					
DAM VIRTUAL	40,472	41,587					
BALANCING NYCA	(46,784)	(57,037)					
BALANCING NON-NYCA	1,560	2,067					
BALANCING WHEELS	(3,786)	(5,143)					
BALANCING VIRTUAL	(40,472)	(41,587)					
UFE/LOSSES	69,406	69,929					



SETTLEMENTS REPORT
October 2023 Settlement Adjustment
March 7, 2024

Initial Settlement – Market Residuals Analysis

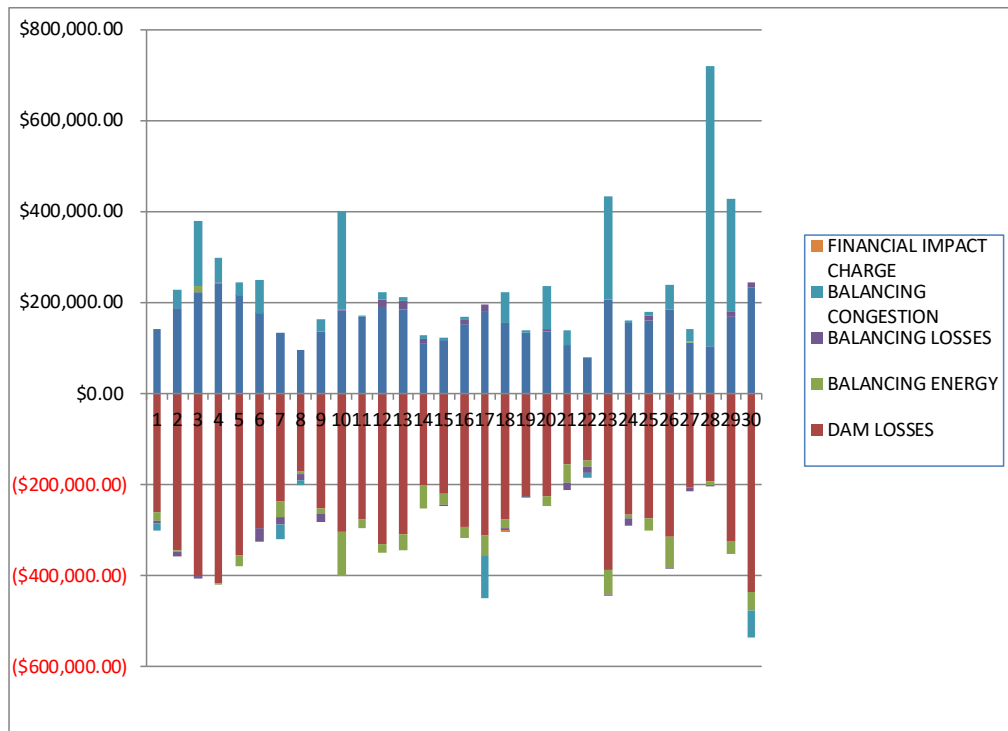
	MONDAY	TUESDAY	WEDNESDAY	THURSDAY	FRIDAY	SATURDAY	SUNDAY
							1
DAM ENERGY							\$140,859.61
DAM LOSSES							(\$259,478.45)
BALANCING ENERGY							(\$20,464.17)
BALANCING LOSSES							(\$5,427.43)
BALANCING CONGESTION							(\$14,664.22)
FINANCIAL IMPACT CHARGE							\$0.00
	2	3	4	5	6	7	8
DAM ENERGY	\$187,547.39	\$223,270.21	\$241,887.60	\$214,155.26	\$176,399.69	\$132,899.04	\$95,869.86
DAM LOSSES	(\$343,258.66)	(\$401,980.01)	(\$416,413.32)	(\$354,653.11)	(\$296,515.37)	(\$236,645.76)	(\$171,845.56)
BALANCING ENERGY	(\$2,737.50)	\$13,573.95	(\$2,083.28)	(\$25,756.40)	\$943.71	(\$35,935.33)	(\$4,705.38)
BALANCING LOSSES	(\$11,885.49)	(\$4,801.06)	\$2,109.45	\$471.34	(\$29,590.43)	(\$14,588.13)	(\$14,728.20)
BALANCING CONGESTION	\$39,514.31	\$142,925.48	\$53,646.50	\$28,442.71	\$71,842.68	(\$32,223.75)	(\$10,334.56)
FINANCIAL IMPACT CHARGE	\$0.00	\$0.00	(\$0.01)	\$0.00	\$0.00	\$0.00	\$0.00
	9	10	11	12	13	14	15
DAM ENERGY	\$137,177.08	\$181,778.08	\$164,760.11	\$191,210.26	\$183,515.23	\$109,965.02	\$116,784.87
DAM LOSSES	(\$253,663.47)	(\$304,941.59)	(\$277,454.93)	(\$330,655.94)	(\$310,104.97)	(\$202,496.55)	(\$219,315.36)
BALANCING ENERGY	(\$10,920.22)	(\$97,647.48)	(\$19,789.75)	(\$18,956.07)	(\$36,082.00)	(\$49,354.96)	(\$25,735.11)
BALANCING LOSSES	(\$19,267.17)	\$3,232.33	\$3,996.85	\$15,167.63	\$20,567.24	\$10,984.34	(\$1,238.14)
BALANCING CONGESTION	\$20,733.56	\$208,940.86	\$1,176.88	\$16,475.04	\$7,371.98	\$7,399.00	\$6,998.79
FINANCIAL IMPACT CHARGE	\$0.00	\$0.00	\$0.00	\$0.00	\$0.00	\$0.00	\$0.00
	16	17	18	19	20	21	22
DAM ENERGY	\$151,912.74	\$180,276.62	\$156,274.59	\$133,370.92	\$134,778.36	\$105,750.34	\$78,892.13
DAM LOSSES	(\$292,023.50)	(\$311,997.34)	(\$275,804.34)	(\$224,533.36)	(\$226,723.65)	(\$156,111.73)	(\$147,010.76)
BALANCING ENERGY	(\$25,104.60)	(\$43,047.00)	(\$20,979.44)	(\$1,623.14)	(\$19,756.02)	(\$40,065.23)	(\$12,653.92)
BALANCING LOSSES	\$11,157.96	\$15,799.24	(\$3,242.56)	(\$2,773.86)	\$7,321.60	(\$15,747.38)	(\$16,023.29)
BALANCING CONGESTION	\$6,566.26	(\$100,866.01)	\$65,975.68	\$5,868.92	\$94,262.31	\$32,591.48	(\$10,395.08)
FINANCIAL IMPACT CHARGE	\$0.00	\$0.00	(\$0.53)	\$0.00	\$0.00	\$0.00	\$0.00
	23	24	25	26	27	28	29
DAM ENERGY	\$206,515.48	\$155,649.92	\$159,930.76	\$184,076.51	\$113,129.51	\$103,435.32	\$168,245.16
DAM LOSSES	(\$387,924.62)	(\$266,271.51)	(\$274,956.60)	(\$315,996.15)	(\$207,963.57)	(\$192,300.19)	(\$325,675.87)
BALANCING ENERGY	(\$52,818.46)	(\$8,270.20)	(\$27,558.23)	(\$68,379.80)	\$917.74	(\$8,780.48)	(\$26,065.20)
BALANCING LOSSES	(\$1,052.23)	(\$14,908.91)	\$9,845.74	(\$1,174.93)	(\$6,889.05)	(\$3,998.73)	\$11,297.39
BALANCING CONGESTION	\$226,824.65	\$5,985.37	\$8,231.59	\$55,536.00	\$26,738.78	\$614,759.04	\$247,850.89
FINANCIAL IMPACT CHARGE	\$0.00	\$0.00	\$0.00	\$0.00	\$0.00	\$0.00	\$0.00
	30	31					
DAM ENERGY	\$234,396.19	\$261,885.81					
DAM LOSSES	(\$437,002.39)	(\$480,005.88)					
BALANCING ENERGY	(\$37,896.04)	(\$37,623.12)					
BALANCING LOSSES	\$10,569.20	\$20,446.03					
BALANCING CONGESTION	(\$60,680.67)	\$79,532.54					
FINANCIAL IMPACT CHARGE	\$0.00	\$0.00					



SETTLEMENTS REPORT
 October 2023 Settlement Adjustment
 March 7, 2024

4-Month Settlement Adjustment – Market Residuals Analysis

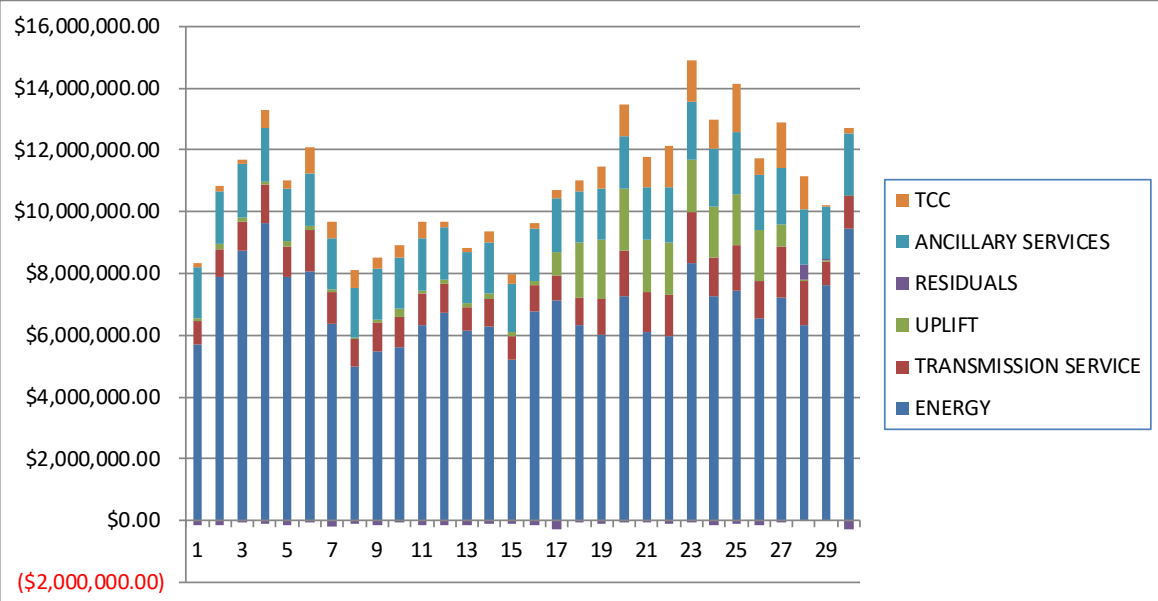
	MONDAY	TUESDAY	WEDNESDAY	THURSDAY	FRIDAY	SATURDAY	SUNDAY
							1
DAM ENERGY							\$140,859.61
DAM LOSSES							(\$259,478.46)
BALANCING ENERGY							(\$20,609.88)
BALANCING LOSSES							(\$5,440.70)
BALANCING CONGESTION							(\$14,795.53)
FINACIAL IMPACT CHARGE							\$0.00
	2	3	4	5	6	7	8
DAM ENERGY	\$187,547.40	\$223,270.21	\$241,887.60	\$214,155.26	\$176,399.69	\$132,899.04	\$95,869.87
DAM LOSSES	(\$343,258.66)	(\$401,980.02)	(\$416,413.32)	(\$354,653.11)	(\$296,515.37)	(\$236,645.75)	(\$171,845.56)
BALANCING ENERGY	(\$2,545.05)	\$13,647.99	(\$1,875.22)	(\$25,848.11)	\$1,401.66	(\$35,863.67)	(\$4,583.92)
BALANCING LOSSES	(\$11,867.43)	(\$4,656.36)	\$2,355.09	\$683.49	(\$29,279.45)	(\$14,461.19)	(\$14,677.13)
BALANCING CONGESTION	\$39,618.54	\$142,334.58	\$53,644.95	\$28,402.70	\$71,895.54	(\$32,224.01)	(\$10,298.74)
FINACIAL IMPACT CHARGE	\$0.00	\$0.00	(\$0.01)	\$0.00	\$0.00	\$0.00	\$0.00
	9	10	11	12	13	14	15
DAM ENERGY	\$137,177.08	\$181,778.09	\$164,760.11	\$191,210.26	\$183,515.23	\$109,965.03	\$116,784.87
DAM LOSSES	(\$263,663.46)	(\$304,941.59)	(\$277,454.93)	(\$330,655.94)	(\$310,104.97)	(\$202,496.55)	(\$219,315.36)
BALANCING ENERGY	(\$10,806.33)	(\$97,456.78)	(\$19,520.87)	(\$18,738.92)	(\$35,428.70)	(\$50,076.21)	(\$25,674.75)
BALANCING LOSSES	(\$19,160.32)	\$3,503.86	\$4,224.20	\$15,435.93	\$20,705.32	\$11,079.27	(\$1,248.02)
BALANCING CONGESTION	\$26,559.87	\$216,032.62	\$1,177.34	\$16,474.77	\$7,371.96	\$7,398.96	\$6,998.74
FINACIAL IMPACT CHARGE	\$0.00	\$0.00	\$0.00	\$0.00	\$0.00	\$0.00	\$0.00
	16	17	18	19	20	21	22
DAM ENERGY	\$151,912.74	\$180,276.62	\$156,274.60	\$133,370.91	\$134,778.35	\$105,750.34	\$78,892.13
DAM LOSSES	(\$292,023.51)	(\$311,997.34)	(\$275,804.34)	(\$224,533.37)	(\$226,723.65)	(\$156,111.74)	(\$147,010.76)
BALANCING ENERGY	(\$24,726.49)	(\$42,860.43)	(\$20,944.09)	(\$1,689.46)	(\$19,764.33)	(\$40,019.21)	(\$12,612.42)
BALANCING LOSSES	\$11,273.97	\$15,904.78	(\$3,243.34)	(\$2,843.10)	\$7,310.41	(\$15,735.57)	(\$15,950.33)
BALANCING CONGESTION	\$6,584.54	(\$95,253.22)	\$65,981.79	\$5,869.59	\$94,348.40	\$33,227.26	(\$10,116.43)
FINACIAL IMPACT CHARGE	\$0.00	\$0.00	(\$0.54)	\$0.00	\$0.00	\$0.00	\$0.00
	23	24	25	26	27	28	29
DAM ENERGY	\$206,515.48	\$155,649.92	\$159,930.77	\$184,076.51	\$113,129.51	\$103,435.32	\$168,245.16
DAM LOSSES	(\$387,924.63)	(\$266,271.51)	(\$274,956.60)	(\$315,996.15)	(\$207,963.57)	(\$192,300.19)	(\$325,675.88)
BALANCING ENERGY	(\$52,823.20)	(\$8,216.08)	(\$27,389.17)	(\$67,445.17)	\$1,035.66	(\$8,627.34)	(\$25,815.77)
BALANCING LOSSES	(\$505.23)	(\$14,669.98)	\$10,052.08	(\$779.88)	(\$6,744.29)	(\$4,021.58)	\$11,537.71
BALANCING CONGESTION	\$226,829.20	\$5,990.82	\$8,184.00	\$55,513.64	\$26,776.43	\$614,745.04	\$247,826.73
FINACIAL IMPACT CHARGE	\$0.00	\$0.00	\$0.00	\$0.00	\$0.00	\$0.00	\$0.00
	30	31					
DAM ENERGY	\$234,396.19	\$261,885.81					
DAM LOSSES	(\$437,002.39)	(\$480,005.88)					
BALANCING ENERGY	(\$38,387.48)	(\$37,226.73)					
BALANCING LOSSES	\$9,195.16	\$19,776.89					
BALANCING CONGESTION	(\$59,392.23)	\$79,532.52					
FINACIAL IMPACT CHARGE	\$0.00	\$0.00					



SETTLEMENTS REPORT
 October 2023 Settlement Adjustment
 March 7, 2024

Initial Settlement – Market Costs Analysis

	MONDAY	TUESDAY	WEDNESDAY	THURSDAY	FRIDAY	SATURDAY	SUNDAY
ENERGY							1
TRANSMISSION SERVICE							\$5,707,957.79
UPLIFT							\$738,498.55
RESIDUALS							\$100,179.04
ANCILLARY SERVICES							(\$159,174.66)
TCC							\$1,647,222.97
							\$120,020.25
	2	3	4	5	6	7	8
ENERGY	\$7,879,000.32	\$8,754,711.33	\$9,648,782.24	\$7,874,797.33	\$8,070,906.12	\$6,386,598.03	\$4,972,796.47
TRANSMISSION SERVICE	\$896,573.95	\$898,984.22	\$1,210,864.06	\$996,930.73	\$1,312,609.68	\$1,019,524.64	\$912,332.89
UPLIFT	\$191,714.32	\$171,342.24	\$102,074.26	\$179,395.12	\$168,646.89	\$57,734.50	\$39,942.65
RESIDUALS	(\$130,819.95)	(\$27,011.43)	(\$120,853.06)	(\$137,340.20)	(\$76,919.72)	(\$186,493.93)	(\$105,744.44)
ANCILLARY SERVICES	\$1,701,124.66	\$1,723,006.16	\$1,731,605.42	\$1,697,907.17	\$1,686,554.14	\$1,674,974.76	\$1,590,740.68
TCC	\$186,435.80	\$152,439.05	\$591,366.90	\$265,577.87	\$828,066.64	\$521,764.97	\$595,371.94
	9	10	11	12	13	14	15
ENERGY	\$5,471,082.76	\$5,606,445.59	\$6,307,722.14	\$6,747,556.41	\$6,143,086.42	\$6,274,880.51	\$5,224,949.29
TRANSMISSION SERVICE	\$948,256.24	\$1,004,391.45	\$1,038,526.68	\$899,999.97	\$780,058.14	\$909,467.21	\$759,486.13
UPLIFT	\$83,722.57	\$253,689.24	\$92,440.04	\$128,436.18	\$107,745.27	\$171,870.47	\$127,563.15
RESIDUALS	(\$125,940.22)	(\$8,637.80)	(\$127,310.84)	(\$126,759.08)	(\$134,732.52)	(\$123,503.15)	(\$122,504.95)
ANCILLARY SERVICES	\$1,630,983.72	\$1,627,936.49	\$1,680,983.59	\$1,700,283.51	\$1,654,691.20	\$1,649,782.90	\$1,569,883.55
TCC	\$394,235.39	\$417,694.69	\$566,846.90	\$206,993.73	\$159,993.04	\$351,728.41	\$276,934.02
	16	17	18	19	20	21	22
ENERGY	\$6,776,464.79	\$7,115,831.12	\$6,333,608.16	\$6,011,722.16	\$7,241,012.55	\$6,117,482.47	\$5,985,713.73
TRANSMISSION SERVICE	\$852,506.44	\$808,566.89	\$877,190.52	\$1,175,065.62	\$1,480,960.49	\$1,256,396.02	\$1,307,139.00
UPLIFT	\$112,105.19	\$766,993.61	\$1,793,361.49	\$1,894,093.19	\$2,022,652.11	\$1,708,384.59	\$1,690,449.68
RESIDUALS	(\$147,491.14)	(\$259,834.49)	(\$77,776.60)	(\$89,690.52)	(\$10,117.40)	(\$73,582.52)	(\$107,190.92)
ANCILLARY SERVICES	\$1,709,960.61	\$1,737,582.89	\$1,659,566.22	\$1,646,139.74	\$1,709,443.75	\$1,698,440.84	\$1,823,748.54
TCC	\$183,881.93	\$280,076.73	\$347,370.36	\$746,309.29	\$1,031,058.98	\$981,524.17	\$1,323,171.03
	23	24	25	26	27	28	29
ENERGY	\$8,328,465.85	\$7,269,460.63	\$7,422,982.02	\$6,568,356.40	\$7,227,974.24	\$6,312,148.43	\$7,613,715.56
TRANSMISSION SERVICE	\$1,645,005.52	\$1,220,348.88	\$1,489,169.58	\$1,176,034.90	\$1,660,167.51	\$1,431,851.02	\$765,138.38
UPLIFT	\$1,691,422.80	\$1,655,395.29	\$1,665,121.70	\$1,672,377.28	\$701,052.29	\$50,510.47	\$31,765.72
RESIDUALS	(\$8,455.18)	(\$127,815.33)	(\$124,506.74)	(\$145,938.37)	(\$74,066.59)	\$513,114.96	\$75,652.37
ANCILLARY SERVICES	\$1,877,270.83	\$1,882,422.31	\$1,991,297.51	\$1,778,806.84	\$1,809,443.94	\$1,768,216.81	\$1,689,428.46
TCC	\$1,343,223.13	\$934,019.44	\$1,562,341.68	\$534,028.04	\$1,509,167.91	\$1,076,509.03	\$36,465.04
	30	31					
ENERGY	\$9,463,023.68	\$9,741,599.98					
TRANSMISSION SERVICE	\$1,040,843.35	\$807,198.67					
UPLIFT	\$28,639.70	\$7,492.18					
RESIDUALS	(\$290,613.71)	(\$155,764.62)					
ANCILLARY SERVICES	\$1,979,866.64	\$1,900,933.58					
TCC	\$207,640.37	\$85,316.23					



SETTLEMENTS REPORT
 October 2023 Settlement Adjustment
 March 7, 2024

4-Month Settlement Adjustment – Market Costs Analysis

	MONDAY	TUESDAY	WEDNESDAY	THURSDAY	FRIDAY	SATURDAY	SUNDAY
ENERGY							1
TRANSMISSION SERVICE							\$5,708,823.55
UPLIFT							\$737,181.03
RESIDUALS							\$100,190.71
ANCILLARY SERVICES							(\$159,464.96)
TCC							\$1,646,019.38
							\$120,020.25
	2	3	4	5	6	7	8
ENERGY	\$7,877,342.63	\$8,752,366.38	\$9,642,494.21	\$7,867,257.23	\$8,061,899.82	\$6,381,309.64	\$4,969,890.37
TRANSMISSION SERVICE	\$895,284.26	\$897,574.79	\$1,209,284.30	\$995,257.75	\$1,310,983.26	\$1,017,694.16	\$910,454.00
UPLIFT	\$191,700.48	\$171,342.23	\$102,074.57	\$179,396.12	\$168,646.90	\$57,734.49	\$39,942.64
RESIDUALS	(\$130,505.20)	(\$27,383.60)	(\$120,400.91)	(\$137,259.77)	(\$76,097.93)	(\$186,295.58)	(\$105,535.48)
ANCILLARY SERVICES	\$1,699,987.10	\$1,721,737.16	\$1,730,147.95	\$1,696,262.26	\$1,685,031.22	\$1,673,199.20	\$1,589,020.28
TCC	\$186,435.80	\$152,439.05	\$591,366.90	\$265,577.87	\$828,066.64	\$521,764.97	\$595,371.94
	9	10	11	12	13	14	15
ENERGY	\$5,465,595.79	\$5,600,685.94	\$6,304,225.23	\$6,745,115.32	\$6,148,419.74	\$6,285,051.98	\$5,230,046.91
TRANSMISSION SERVICE	\$946,740.29	\$1,002,938.33	\$1,037,535.33	\$898,957.98	\$779,487.80	\$909,136.42	\$758,977.38
UPLIFT	\$83,722.67	\$253,690.21	\$92,440.03	\$128,436.21	\$107,741.43	\$178,351.69	\$134,904.66
RESIDUALS	(\$119,893.16)	(\$1,083.80)	(\$126,814.15)	(\$126,273.90)	(\$133,941.16)	(\$124,129.50)	(\$122,454.52)
ANCILLARY SERVICES	\$1,638,695.03	\$1,630,242.47	\$1,680,078.80	\$1,699,353.09	\$1,654,287.69	\$1,649,618.03	\$1,569,539.11
TCC	\$385,122.39	\$414,072.96	\$566,846.90	\$206,993.73	\$159,993.04	\$351,728.41	\$276,934.02
	16	17	18	19	20	21	22
ENERGY	\$6,768,269.52	\$7,118,382.70	\$6,336,280.52	\$6,016,615.49	\$7,242,801.66	\$6,123,782.89	\$5,986,527.35
TRANSMISSION SERVICE	\$851,054.71	\$807,654.59	\$876,537.31	\$1,174,499.42	\$1,480,288.46	\$1,255,501.97	\$1,305,721.53
UPLIFT	\$112,106.43	\$768,399.93	\$1,794,683.94	\$1,896,511.91	\$2,022,724.75	\$1,708,384.56	\$1,690,449.30
RESIDUALS	(\$146,978.75)	(\$253,929.59)	(\$77,735.92)	(\$89,825.43)	(\$10,050.82)	(\$72,888.92)	(\$106,797.81)
ANCILLARY SERVICES	\$1,708,588.92	\$1,736,847.78	\$1,659,030.75	\$1,645,710.51	\$1,708,890.57	\$1,697,757.28	\$1,822,508.47
TCC	\$183,881.93	\$280,076.73	\$347,370.36	\$746,309.29	\$1,031,058.98	\$981,524.17	\$1,323,171.03
	23	24	25	26	27	28	29
ENERGY	\$8,321,008.51	\$7,261,753.52	\$7,416,702.34	\$6,554,566.37	\$7,219,871.64	\$6,306,606.46	\$7,608,869.82
TRANSMISSION SERVICE	\$1,643,674.35	\$1,218,683.87	\$1,487,385.69	\$1,174,140.25	\$1,658,342.34	\$1,430,152.02	\$763,705.62
UPLIFT	\$1,691,422.81	\$1,655,529.46	\$1,665,889.18	\$1,672,738.45	\$701,052.11	\$50,510.47	\$46,752.99
RESIDUALS	(\$7,908.38)	(\$127,516.83)	(\$124,178.92)	(\$144,631.05)	(\$73,766.26)	\$513,231.25	\$76,117.95
ANCILLARY SERVICES	\$1,880,483.64	\$1,886,823.80	\$1,992,976.75	\$1,775,829.58	\$1,805,484.58	\$1,766,648.11	\$1,688,116.46
TCC	\$1,338,788.99	\$928,066.33	\$1,559,011.19	\$535,237.51	\$1,511,417.56	\$1,076,509.03	\$36,465.04
	30	31					
ENERGY	\$9,520,888.71	\$9,783,324.90					
TRANSMISSION SERVICE	\$1,042,827.64	\$808,647.82					
UPLIFT	\$32,352.82	\$7,492.18					
RESIDUALS	(\$291,190.75)	(\$156,037.39)					
ANCILLARY SERVICES	\$1,982,106.83	\$1,902,701.21					
TCC	\$207,640.37	\$85,316.23					

