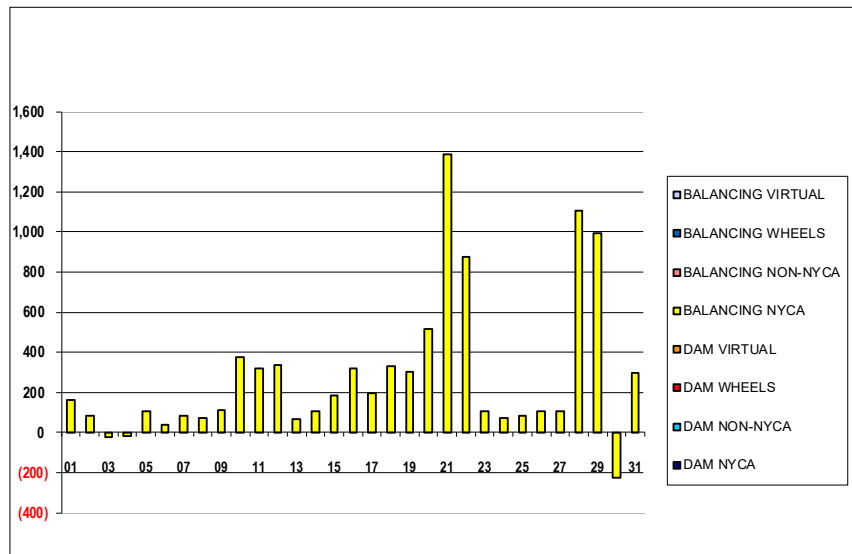


SETTLEMENTS REPORT  
 July 2023 Settlement Adjustment  
 December 7, 2023

**Settlement Adjustment – Market Supply Delta Analysis**

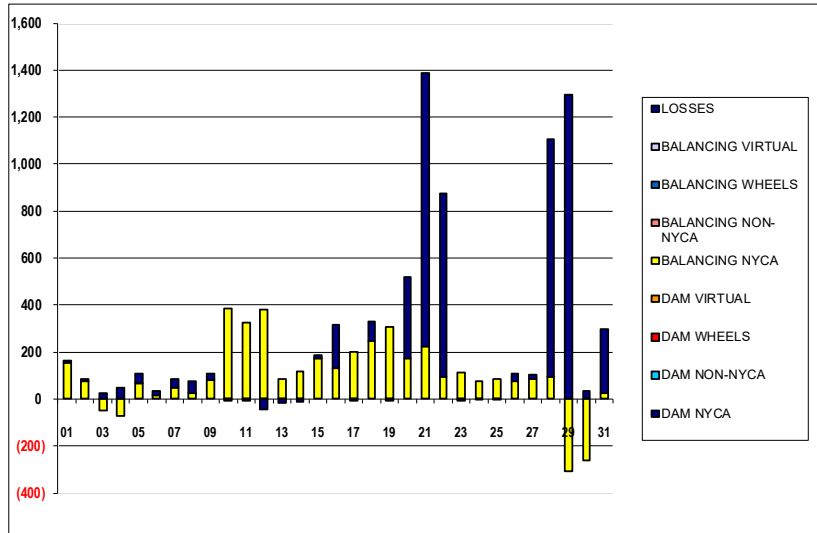
	MONDAY	TUESDAY	WEDNESDAY	THURSDAY	FRIDAY	SATURDAY	SUNDAY
						1	2
DAM NYCA						0	0
DAM NON-NYCA						0	0
DAM WHEELS						0	0
DAM VIRTUAL						0	0
BALANCING NYCA						164	83
BALANCING NON-NYCA						0	0
BALANCING WHEELS						0	0
BALANCING VIRTUAL						0	0
	3	4	5	6	7	8	9
DAM NYCA	0	0	0	0	0	0	0
DAM NON-NYCA	0	0	0	0	0	0	0
DAM WHEELS	0	0	0	0	0	0	0
DAM VIRTUAL	0	0	0	0	0	0	0
BALANCING NYCA	(23)	(19)	108	36	84	74	110
BALANCING NON-NYCA	0	0	0	0	0	0	0
BALANCING WHEELS	0	0	0	0	0	0	0
BALANCING VIRTUAL	0	0	0	0	0	0	0
	10	11	12	13	14	15	16
DAM NYCA	0	0	0	0	0	0	0
DAM NON-NYCA	0	0	0	0	0	0	0
DAM WHEELS	0	0	0	0	0	0	0
DAM VIRTUAL	0	0	0	0	0	0	0
BALANCING NYCA	375	317	339	67	108	187	318
BALANCING NON-NYCA	0	0	0	0	0	0	0
BALANCING WHEELS	0	0	0	0	0	0	0
BALANCING VIRTUAL	0	0	0	0	0	0	0
	17	18	19	20	21	22	23
DAM NYCA	0	0	0	0	0	0	0
DAM NON-NYCA	0	0	0	0	0	0	0
DAM WHEELS	0	0	0	0	0	0	0
DAM VIRTUAL	0	0	0	0	0	0	0
BALANCING NYCA	197	332	300	517	1,386	873	106
BALANCING NON-NYCA	0	0	0	0	0	0	0
BALANCING WHEELS	0	0	0	0	0	0	0
BALANCING VIRTUAL	0	0	0	0	0	0	0
	24	25	26	27	28	29	30
DAM NYCA	0	0	0	0	0	0	0
DAM NON-NYCA	0	0	0	0	0	0	0
DAM WHEELS	0	0	0	0	0	0	0
DAM VIRTUAL	0	0	0	0	0	0	0
BALANCING NYCA	74	82	108	104	1,107	991	(227)
BALANCING NON-NYCA	0	0	0	0	0	0	0
BALANCING WHEELS	0	0	0	0	0	0	0
BALANCING VIRTUAL	0	0	0	0	0	0	0
	31						
DAM NYCA	0						
DAM NON-NYCA	0						
DAM WHEELS	0						
DAM VIRTUAL	0						
BALANCING NYCA	296						
BALANCING NON-NYCA	0						
BALANCING WHEELS	0						
BALANCING VIRTUAL	0						



SETTLEMENTS REPORT  
 July 2023 Settlement Adjustment  
 December 7, 2023

**Settlement Adjustment – Market Withdrawals Delta Analysis**

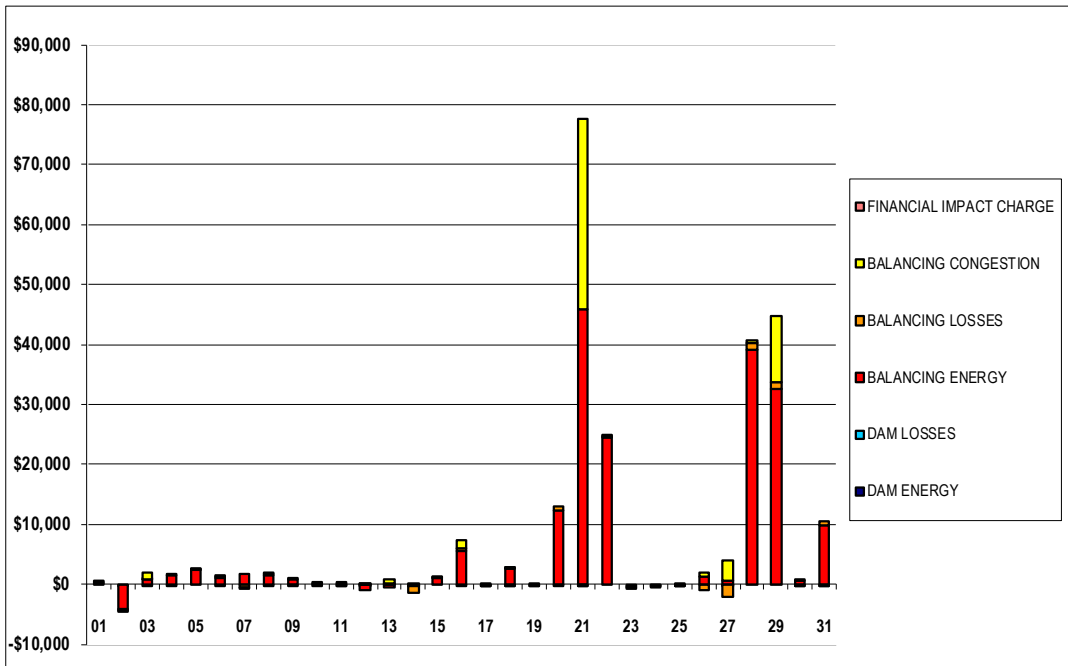
	MONDAY	TUESDAY	WEDNESDAY	THURSDAY	FRIDAY	SATURDAY	SUNDAY
DAM NYCA						1	2
DAM NON-NYCA						0	0
DAM WHEELS						0	0
DAM VIRTUAL						0	0
BALANCING NYCA						156	75
BALANCING NON-NYCA						0	0
BALANCING WHEELS						0	0
BALANCING VIRTUAL						0	0
UFE/LOSSES						8	8
<b>3</b>	<b>4</b>	<b>5</b>	<b>6</b>	<b>7</b>	<b>8</b>	<b>9</b>	
DAM NYCA	0	0	0	0	0	0	0
DAM NON-NYCA	0	0	0	0	0	0	0
DAM WHEELS	0	0	0	0	0	0	0
DAM VIRTUAL	0	0	0	0	0	0	0
BALANCING NYCA	(48)	(70)	68	14	46	23	81
BALANCING NON-NYCA	0	0	0	0	0	0	0
BALANCING WHEELS	0	0	0	0	0	0	0
BALANCING VIRTUAL	0	0	0	0	0	0	0
UFE/LOSSES	25	50	41	22	38	52	29
<b>10</b>	<b>11</b>	<b>12</b>	<b>13</b>	<b>14</b>	<b>15</b>	<b>16</b>	
DAM NYCA	0	0	0	0	0	0	0
DAM NON-NYCA	0	0	0	0	0	0	0
DAM WHEELS	0	0	0	0	0	0	0
DAM VIRTUAL	0	0	0	0	0	0	0
BALANCING NYCA	383	324	381	83	119	174	130
BALANCING NON-NYCA	0	0	0	0	0	0	0
BALANCING WHEELS	0	0	0	0	0	0	0
BALANCING VIRTUAL	0	0	0	0	0	0	0
UFE/LOSSES	(9)	(7)	(42)	(16)	(11)	13	188
<b>17</b>	<b>18</b>	<b>19</b>	<b>20</b>	<b>21</b>	<b>22</b>	<b>23</b>	
DAM NYCA	0	0	0	0	0	0	0
DAM NON-NYCA	0	0	0	0	0	0	0
DAM WHEELS	0	0	0	0	0	0	0
DAM VIRTUAL	0	0	0	0	0	0	0
BALANCING NYCA	203	246	308	174	224	95	112
BALANCING NON-NYCA	0	0	0	0	0	0	0
BALANCING WHEELS	0	0	0	0	0	0	0
BALANCING VIRTUAL	0	0	0	0	0	0	0
UFE/LOSSES	(6)	86	(8)	343	1,162	777	(6)
<b>24</b>	<b>25</b>	<b>26</b>	<b>27</b>	<b>28</b>	<b>29</b>	<b>30</b>	
DAM NYCA	0	0	0	0	0	0	0
DAM NON-NYCA	0	0	0	0	0	0	0
DAM WHEELS	0	0	0	0	0	0	0
DAM VIRTUAL	0	0	0	0	0	0	0
BALANCING NYCA	78	84	74	86	96	(306)	(263)
BALANCING NON-NYCA	0	0	0	0	0	0	0
BALANCING WHEELS	0	0	0	0	0	0	0
BALANCING VIRTUAL	0	0	0	0	0	0	0
UFE/LOSSES	(4)	(2)	34	18	1,011	1,297	36
<b>31</b>							
DAM NYCA	0						
DAM NON-NYCA	0						
DAM WHEELS	0						
DAM VIRTUAL	0						
BALANCING NYCA	24						
BALANCING NON-NYCA	0						
BALANCING WHEELS	0						
BALANCING VIRTUAL	0						
UFE/LOSSES	272						



SETTLEMENTS REPORT  
 July 2023 Settlement Adjustment  
 December 7, 2023

**Settlement Adjustment – Market Residuals Delta Analysis**

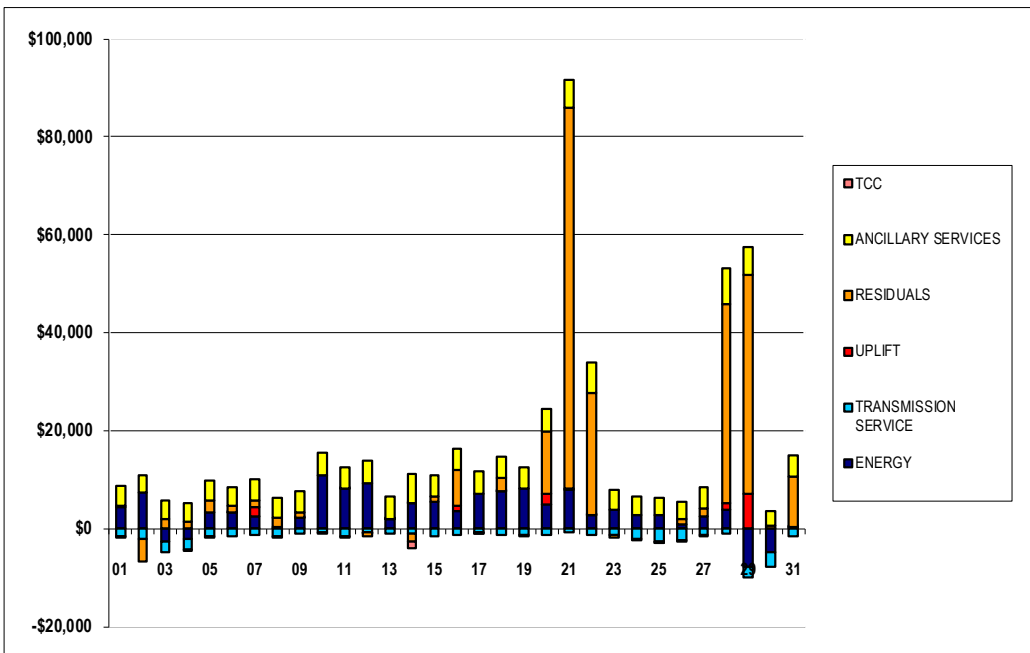
	MONDAY	TUESDAY	WEDNESDAY	THURSDAY	FRIDAY	SATURDAY	SUNDAY
						1	2
DAM ENERGY						\$0.00	\$0.01
DAM LOSSES						\$0.00	(\$0.01)
BALANCING ENERGY						\$242.30	(\$4,116.53)
BALANCING LOSSES						\$56.47	(\$280.39)
BALANCING CONGESTION						\$43.99	(\$278.41)
FINANCIAL IMPACT CHARGE						\$0.00	\$0.00
	3	4	5	6	7	8	9
DAM ENERGY	(\$0.01)	\$0.00	\$0.00	(\$0.01)	\$0.00	\$0.01	\$0.00
DAM LOSSES	(\$0.01)	(\$0.01)	\$0.00	\$0.01	\$0.00	(\$0.01)	\$0.00
BALANCING ENERGY	\$727.03	\$1,409.44	\$2,341.73	\$1,054.73	\$1,617.47	\$1,510.18	\$890.03
BALANCING LOSSES	\$84.72	\$110.42	\$136.92	\$184.97	(\$462.73)	\$141.87	\$58.22
BALANCING CONGESTION	\$1,188.46	(\$0.01)	\$16.05	\$7.69	(\$5.13)	\$114.43	(\$26.36)
FINANCIAL IMPACT CHARGE	\$0.00	\$0.00	\$0.00	\$0.00	\$0.00	\$0.00	(\$0.01)
	10	11	12	13	14	15	16
DAM ENERGY	\$0.00	(\$0.01)	\$0.00	\$0.00	\$0.00	\$0.00	(\$0.01)
DAM LOSSES	\$0.00	\$0.00	(\$0.01)	\$0.00	(\$0.01)	\$0.00	(\$0.01)
BALANCING ENERGY	(\$187.56)	(\$208.39)	(\$1,047.37)	(\$483.82)	(\$395.39)	\$925.50	\$5,607.57
BALANCING LOSSES	\$30.26	\$28.05	\$12.59	\$139.69	(\$1,138.28)	\$42.96	\$286.89
BALANCING CONGESTION	\$43.95	\$54.73	\$85.82	\$593.93	\$0.63	\$136.42	\$1,462.01
FINANCIAL IMPACT CHARGE	\$0.00	\$0.00	\$0.00	\$0.00	\$0.00	\$0.00	\$0.00
	17	18	19	20	21	22	23
DAM ENERGY	(\$0.01)	\$0.00	\$0.01	\$0.00	\$0.00	\$0.00	\$0.00
DAM LOSSES	\$0.00	(\$0.01)	\$0.00	\$0.00	\$0.00	\$0.00	\$0.00
BALANCING ENERGY	(\$133.91)	\$2,653.01	(\$194.35)	\$12,406.86	\$45,775.67	\$24,421.00	(\$277.72)
BALANCING LOSSES	(\$216.95)	\$11.23	(\$203.18)	\$494.57	(\$75.13)	\$353.90	(\$172.67)
BALANCING CONGESTION	\$143.83	\$10.51	\$43.74	(\$294.26)	\$31,938.84	\$164.66	(\$8.74)
FINANCIAL IMPACT CHARGE	\$0.00	(\$0.04)	\$0.00	\$0.00	(\$0.02)	\$0.00	\$0.00
	24	25	26	27	28	29	30
DAM ENERGY	\$0.00	\$0.00	\$0.00	(\$0.01)	\$0.00	\$0.00	\$0.00
DAM LOSSES	\$0.01	(\$0.01)	\$0.01	\$0.00	\$0.00	\$0.00	(\$0.01)
BALANCING ENERGY	(\$119.91)	(\$98.41)	\$1,242.55	\$645.18	\$39,155.33	\$32,535.93	\$561.26
BALANCING LOSSES	(\$157.67)	(\$232.97)	(\$910.00)	(\$2,202.25)	\$1,175.05	\$1,153.22	\$144.72
BALANCING CONGESTION	(\$37.69)	\$44.22	\$626.60	\$3,249.09	\$340.79	\$11,045.14	(\$0.01)
FINANCIAL IMPACT CHARGE	(\$0.01)	\$0.00	\$0.00	\$0.00	\$0.00	\$0.00	(\$0.02)
	31						
DAM ENERGY	(\$0.01)						
DAM LOSSES	(\$0.01)						
BALANCING ENERGY	\$9,855.57						
BALANCING LOSSES	\$647.04						
BALANCING CONGESTION	(\$78.65)						
FINANCIAL IMPACT CHARGE	\$0.00						



SETTLEMENTS REPORT  
 July 2023 Settlement Adjustment  
 December 7, 2023

**Settlement Adjustment – Market Costs Delta Analysis**

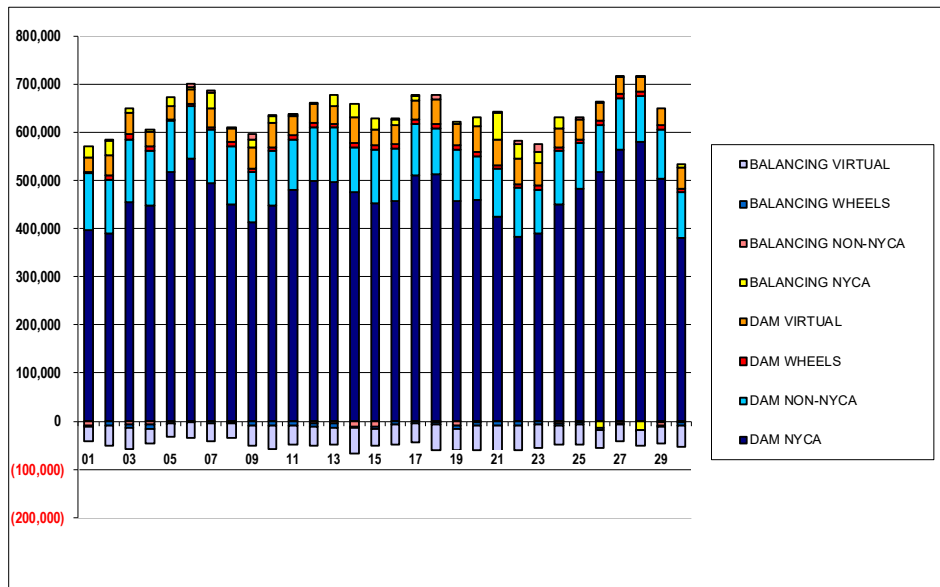
	MONDAY	TUESDAY	WEDNESDAY	THURSDAY	FRIDAY	SATURDAY	SUNDAY
ENERGY						1	2
TRANSMISSION SERVICE						\$4,287.63	\$7,472.01
UPLIFT						(\$1,482.84)	(\$2,008.18)
RESIDUALS						(\$0.10)	\$0.00
ANCILLARY SERVICES						\$342.76	(\$4,675.33)
ANCILLARY SERVICES						\$4,174.24	\$3,463.28
TCC						\$0.00	\$0.00
	3	4	5	6	7	8	9
ENERGY	(\$2,748.69)	(\$2,141.12)	\$3,269.97	\$3,359.75	\$2,368.51	\$431.00	\$2,342.65
TRANSMISSION SERVICE	(\$2,130.28)	(\$2,146.69)	(\$1,445.39)	(\$1,668.89)	(\$1,255.52)	(\$1,688.64)	(\$1,114.23)
UPLIFT	\$0.00	(\$87.13)	(\$2.92)	\$0.07	\$2,142.60	(\$0.01)	\$0.10
RESIDUALS	\$2,000.19	\$1,519.84	\$2,494.70	\$1,247.39	\$1,149.61	\$1,766.48	\$921.88
ANCILLARY SERVICES	\$3,651.83	\$3,626.90	\$4,165.43	\$3,912.47	\$4,296.99	\$3,983.67	\$4,402.03
TCC	\$0.00	\$0.00	\$0.00	\$0.00	\$0.00	\$0.00	\$0.00
	10	11	12	13	14	15	16
ENERGY	\$10,764.38	\$8,231.69	\$9,196.18	\$1,823.91	\$5,285.97	\$5,492.42	\$3,564.63
TRANSMISSION SERVICE	(\$724.55)	(\$1,520.99)	(\$729.32)	(\$1,095.08)	(\$1,131.36)	(\$1,485.96)	(\$1,224.29)
UPLIFT	\$0.00	\$2.42	(\$1.04)	\$0.61	\$0.46	\$0.01	\$1,053.81
RESIDUALS	(\$113.35)	(\$125.62)	(\$948.97)	\$249.80	(\$1,533.05)	\$1,104.88	\$7,356.45
ANCILLARY SERVICES	\$4,793.07	\$4,201.85	\$4,778.67	\$4,427.53	\$5,788.33	\$4,171.03	\$4,384.57
TCC	\$0.00	\$0.00	\$0.00	\$0.00	(\$1,381.74)	\$0.00	\$0.00
	17	18	19	20	21	22	23
ENERGY	\$7,205.24	\$7,575.66	\$8,089.50	\$5,001.53	\$8,013.96	\$2,772.14	\$3,737.23
TRANSMISSION SERVICE	(\$883.52)	(\$1,255.66)	(\$1,355.44)	(\$1,373.49)	(\$875.42)	(\$1,234.51)	(\$1,376.42)
UPLIFT	(\$0.14)	\$72.81	\$0.00	\$2,111.36	\$166.85	\$58.24	\$0.00
RESIDUALS	(\$207.04)	\$2,674.70	(\$353.78)	\$12,607.17	\$77,639.36	\$24,939.56	(\$459.13)
ANCILLARY SERVICES	\$4,601.45	\$4,355.77	\$4,316.32	\$4,603.40	\$5,842.07	\$6,110.49	\$4,227.94
TCC	\$0.00	\$0.00	\$0.00	\$0.00	\$0.00	\$0.00	\$0.00
	24	25	26	27	28	29	30
ENERGY	\$2,730.65	\$2,853.48	\$868.58	\$2,534.56	\$3,757.14	(\$7,687.15)	(\$4,810.79)
TRANSMISSION SERVICE	(\$2,012.84)	(\$2,666.04)	(\$2,424.24)	(\$1,215.19)	(\$1,072.91)	(\$2,226.52)	(\$2,993.20)
UPLIFT	\$0.01	(\$0.54)	(\$1.05)	(\$23.86)	\$1,330.93	\$6,957.94	\$0.01
RESIDUALS	(\$315.27)	(\$287.17)	\$959.16	\$1,692.01	\$40,671.17	\$44,734.29	\$705.94
ANCILLARY SERVICES	\$3,767.29	\$3,312.01	\$3,608.18	\$4,336.06	\$7,311.28	\$5,858.05	\$2,957.42
TCC	\$0.00	\$0.00	\$0.00	\$0.00	\$0.00	\$0.00	\$0.00
	31						
ENERGY	\$245.35						
TRANSMISSION SERVICE	(\$1,594.01)						
UPLIFT	\$9.69						
RESIDUALS	\$10,423.94						
ANCILLARY SERVICES	\$4,275.04						
TCC	\$0.00						



**SETTLEMENTS REPORT**  
 July 2023 Settlement Adjustment  
 December 7, 2023

**Initial Settlement – Market Supply Analysis**

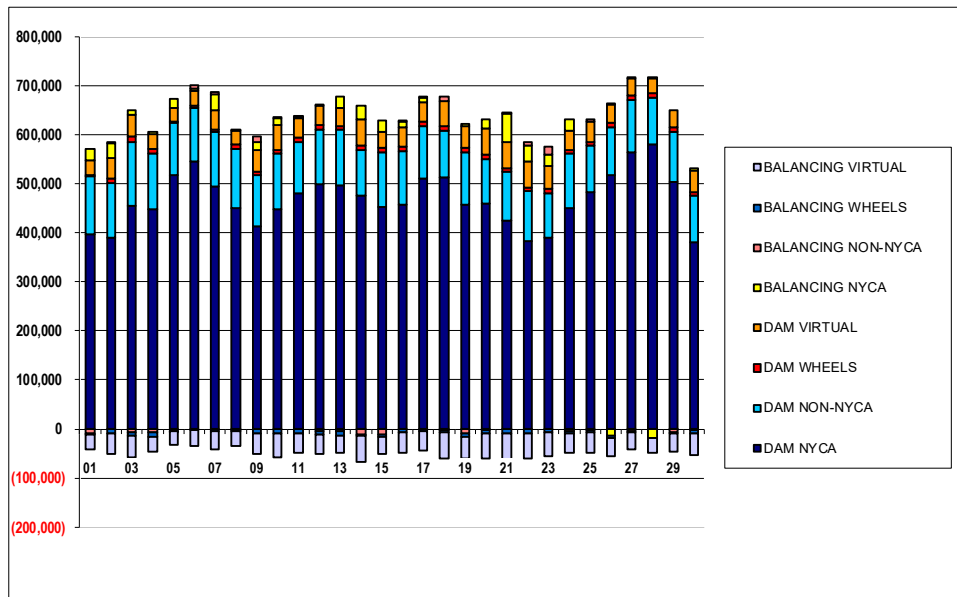
	MONDAY	TUESDAY	WEDNESDAY	THURSDAY	FRIDAY	SATURDAY	SUNDAY
DAM NYCA						1	2
DAM NON-NYCA						395,675	388,621
DAM WHEELS						119,877	111,641
DAM VIRTUAL						1,825	9,242
BALANCING NYCA						29,188	42,581
BALANCING NON-NYCA						23,159	29,139
BALANCING WHEELS						(9,571)	3,930
BALANCING VIRTUAL						(1,825)	(9,242)
						(29,188)	(42,581)
	3	4	5	6	7	8	9
DAM NYCA	454,053	448,282	517,262	545,713	494,842	448,995	413,111
DAM NON-NYCA	131,190	113,739	107,635	109,044	109,587	121,476	103,776
DAM WHEELS	10,331	9,154	588	3,503	6,168	8,478	8,400
DAM VIRTUAL	44,189	30,516	28,963	30,788	38,267	29,214	42,449
BALANCING NYCA	8,697	3,887	18,211	5,019	32,548	1,659	16,916
BALANCING NON-NYCA	(7,190)	(7,531)	(3,638)	6,581	6,118	(1,314)	10,448
BALANCING WHEELS	(6,588)	(8,740)	(588)	(2,789)	(3,477)	(4,227)	(8,400)
BALANCING VIRTUAL	(44,189)	(30,516)	(28,963)	(30,788)	(38,267)	(29,214)	(42,449)
	10	11	12	13	14	15	16
DAM NYCA	446,784	480,286	499,894	496,830	475,672	451,432	457,458
DAM NON-NYCA	113,857	104,009	110,622	112,191	93,673	112,033	108,359
DAM WHEELS	8,400	8,425	8,850	8,400	8,400	8,472	8,491
DAM VIRTUAL	49,646	41,099	38,745	35,963	52,527	33,362	39,838
BALANCING NYCA	14,270	882	3,289	23,255	27,575	22,954	10,990
BALANCING NON-NYCA	1,835	3,302	(4,526)	(5,483)	(11,880)	(11,612)	2,027
BALANCING WHEELS	(8,375)	(7,890)	(6,750)	(7,200)	(2,518)	(5,268)	(7,791)
BALANCING VIRTUAL	(49,646)	(41,099)	(38,745)	(35,963)	(52,527)	(33,362)	(39,838)
	17	18	19	20	21	22	23
DAM NYCA	509,949	513,270	457,763	458,267	425,078	381,762	390,094
DAM NON-NYCA	107,617	94,390	106,748	92,355	98,450	102,779	91,248
DAM WHEELS	8,525	8,575	8,400	8,400	8,400	8,400	8,400
DAM VIRTUAL	40,271	52,286	44,821	52,250	53,051	52,990	46,841
BALANCING NYCA	7,973	(1,991)	4,735	19,434	55,049	30,019	22,209
BALANCING NON-NYCA	3,297	7,647	(9,544)	(1,396)	3,061	7,192	16,378
BALANCING WHEELS	(4,325)	(5,778)	(6,054)	(7,217)	(8,400)	(8,200)	(7,661)
BALANCING VIRTUAL	(40,271)	(52,286)	(44,821)	(52,250)	(53,051)	(52,990)	(46,841)
	24	25	26	27	28	29	30
DAM NYCA	449,982	483,498	518,371	563,141	579,289	502,706	381,585
DAM NON-NYCA	110,313	92,998	97,278	107,936	96,317	103,175	93,211
DAM WHEELS	8,425	8,400	8,677	8,866	8,897	8,694	8,400
DAM VIRTUAL	39,138	40,958	37,756	35,261	30,691	35,981	43,739
BALANCING NYCA	22,711	(2,717)	(12,907)	331	(18,713)	(1,553)	5,604
BALANCING NON-NYCA	(3,512)	4,703	1,299	(3,460)	2,219	(6,608)	(1,551)
BALANCING WHEELS	(5,801)	(4,705)	(4,347)	(2,718)	(226)	(2,202)	(8,400)
BALANCING VIRTUAL	(39,138)	(40,958)	(37,756)	(35,261)	(30,691)	(35,981)	(43,739)
	31						
DAM NYCA	404,536						
DAM NON-NYCA	102,106						
DAM WHEELS	8,400						
DAM VIRTUAL	45,172						
BALANCING NYCA	22,455						
BALANCING NON-NYCA	(2,046)						
BALANCING WHEELS	(8,400)						
BALANCING VIRTUAL	(45,172)						



**SETTLEMENTS REPORT**  
**July 2023 Settlement Adjustment**  
**December 7, 2023**

**4-Month Settlement Adjustment – Market Supply Analysis**

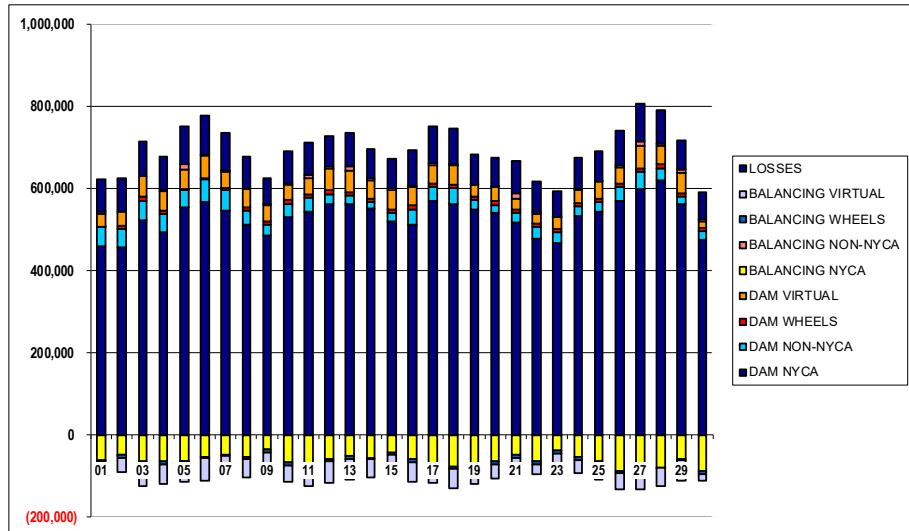
	MONDAY	TUESDAY	WEDNESDAY	THURSDAY	FRIDAY	SATURDAY	SUNDAY
						1	2
DAM NYCA						395,675	388,621
DAM NON-NYCA						119,877	111,641
DAM WHEELS						1,825	9,242
DAM VIRTUAL						29,188	42,581
BALANCING NYCA						23,323	29,223
BALANCING NON-NYCA						(9,571)	3,930
BALANCING WHEELS						(1,825)	(9,242)
BALANCING VIRTUAL						(29,188)	(42,581)
	3	4	5	6	7	8	9
DAM NYCA	454,053	448,282	517,262	545,713	494,842	448,995	413,111
DAM NON-NYCA	131,190	113,739	107,635	109,044	109,587	121,476	103,776
DAM WHEELS	10,331	9,154	588	3,503	6,168	8,478	8,400
DAM VIRTUAL	44,189	30,516	28,963	30,788	38,267	29,214	42,449
BALANCING NYCA	8,674	3,868	18,319	5,055	32,632	1,734	17,026
BALANCING NON-NYCA	(7,190)	(7,531)	(3,638)	6,581	6,118	(1,314)	10,448
BALANCING WHEELS	(6,588)	(8,740)	(588)	(2,789)	(3,477)	(4,227)	(8,400)
BALANCING VIRTUAL	(44,189)	(30,516)	(28,963)	(30,788)	(38,267)	(29,214)	(42,449)
	10	11	12	13	14	15	16
DAM NYCA	446,784	480,286	499,894	496,830	475,672	451,432	457,458
DAM NON-NYCA	113,857	104,009	110,622	112,191	93,673	112,033	108,359
DAM WHEELS	8,400	8,425	8,850	8,400	8,400	8,472	8,491
DAM VIRTUAL	49,646	41,099	38,745	35,963	52,527	33,362	39,838
BALANCING NYCA	14,645	1,199	3,628	23,322	27,683	23,141	11,308
BALANCING NON-NYCA	1,835	3,302	(4,526)	(5,483)	(11,880)	(11,612)	2,027
BALANCING WHEELS	(8,375)	(7,890)	(6,750)	(7,200)	(2,519)	(5,268)	(7,791)
BALANCING VIRTUAL	(49,646)	(41,099)	(38,745)	(35,963)	(52,527)	(33,362)	(39,838)
	17	18	19	20	21	22	23
DAM NYCA	509,949	513,270	457,763	458,267	425,078	381,762	390,094
DAM NON-NYCA	107,617	94,390	106,748	92,355	98,450	102,779	91,248
DAM WHEELS	8,525	8,575	8,400	8,400	8,400	8,400	8,400
DAM VIRTUAL	40,271	52,286	44,821	52,250	53,051	52,990	46,841
BALANCING NYCA	8,169	(1,658)	5,035	19,952	56,435	30,891	22,315
BALANCING NON-NYCA	3,297	7,647	(9,544)	(1,396)	3,061	7,192	16,378
BALANCING WHEELS	(4,325)	(5,778)	(6,054)	(7,217)	(8,400)	(8,200)	(7,661)
BALANCING VIRTUAL	(40,271)	(52,286)	(44,821)	(52,250)	(53,051)	(52,990)	(46,841)
	24	25	26	27	28	29	30
DAM NYCA	449,982	483,498	518,371	563,141	579,289	502,706	381,585
DAM NON-NYCA	110,313	92,998	97,278	107,936	96,317	103,175	93,211
DAM WHEELS	8,425	8,400	8,677	8,866	8,897	8,894	8,400
DAM VIRTUAL	39,138	40,958	37,756	35,261	30,691	35,981	43,739
BALANCING NYCA	22,785	(2,635)	(12,799)	435	(17,606)	(563)	5,378
BALANCING NON-NYCA	(3,512)	4,703	1,299	(3,460)	2,219	(6,608)	(1,551)
BALANCING WHEELS	(5,801)	(4,705)	(4,347)	(2,718)	(226)	(2,202)	(8,400)
BALANCING VIRTUAL	(39,138)	(40,958)	(37,756)	(35,261)	(30,691)	(35,981)	(43,739)
	31						
DAM NYCA	404,536						
DAM NON-NYCA	102,106						
DAM WHEELS	8,400						
DAM VIRTUAL	45,172						
BALANCING NYCA	22,750						
BALANCING NON-NYCA	(2,046)						
BALANCING WHEELS	(8,400)						
BALANCING VIRTUAL	(45,172)						



SETTLEMENTS REPORT  
 July 2023 Settlement Adjustment  
 December 7, 2023

**Initial Settlement – Market Withdrawals Analysis**

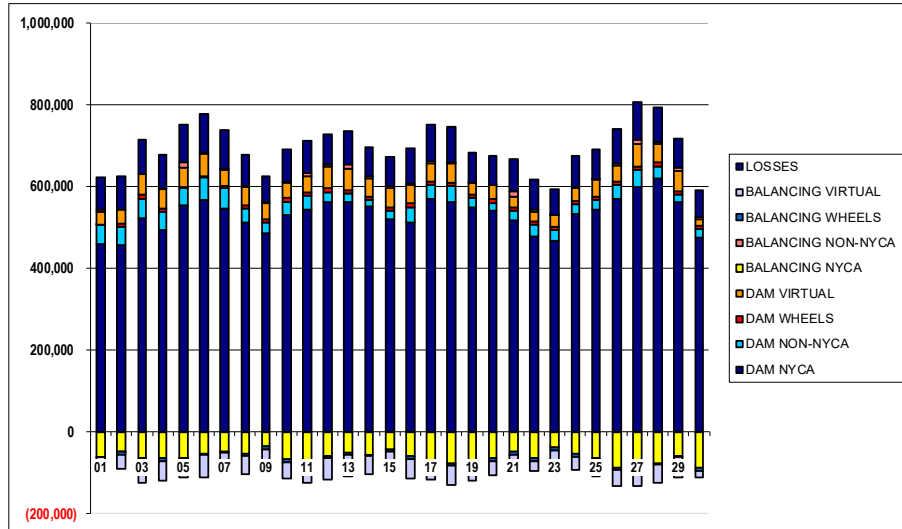
	MONDAY	TUESDAY	WEDNESDAY	THURSDAY	FRIDAY	SATURDAY	SUNDAY
						1	2
DAM NYCA						459,383	456,816
DAM NON-NYCA						46,076	43,637
DAM WHEELS						1,825	9,242
DAM VIRTUAL						30,907	34,222
BALANCING NYCA						(61,009)	(47,701)
BALANCING NON-NYCA						3,955	(56)
BALANCING WHEELS						(1,825)	(9,242)
BALANCING VIRTUAL						(30,907)	(34,222)
UFE/LOSSES						80,735	80,635
	3	4	5	6	7	8	9
DAM NYCA	523,301	492,237	553,090	567,505	545,102	512,764	484,904
DAM NON-NYCA	46,442	44,852	43,572	53,410	49,681	32,495	27,184
DAM WHEELS	10,331	9,154	588	3,503	6,168	8,478	8,400
DAM VIRTUAL	49,220	46,449	47,906	55,292	38,841	44,589	38,448
BALANCING NYCA	(65,085)	(63,144)	(64,343)	(53,013)	(48,479)	(54,023)	(34,874)
BALANCING NON-NYCA	(2,924)	2,981	14,513	3,466	4,008	3,055	1,710
BALANCING WHEELS	(6,588)	(8,740)	(588)	(2,789)	(3,477)	(4,227)	(8,400)
BALANCING VIRTUAL	(49,220)	(46,449)	(47,906)	(55,292)	(38,841)	(44,589)	(38,448)
UFE/LOSSES	85,016	81,452	92,637	94,989	92,784	76,525	65,326
	10	11	12	13	14	15	16
DAM NYCA	529,729	544,015	561,823	561,906	550,677	520,931	512,650
DAM NON-NYCA	33,082	32,892	24,774	20,916	16,161	19,490	37,103
DAM WHEELS	8,400	8,425	8,850	8,400	8,400	8,472	8,491
DAM VIRTUAL	39,014	39,345	52,079	50,796	44,029	46,737	46,785
BALANCING NYCA	(65,931)	(76,600)	(58,473)	(50,442)	(57,119)	(42,701)	(60,111)
BALANCING NON-NYCA	1,608	7,156	6,597	10,559	4,454	5,549	2,450
BALANCING WHEELS	(8,375)	(7,890)	(6,750)	(7,200)	(2,519)	(5,268)	(7,791)
BALANCING VIRTUAL	(39,014)	(39,345)	(52,079)	(50,796)	(44,029)	(46,737)	(46,785)
UFE/LOSSES	78,257	81,015	74,559	83,854	70,867	71,538	86,742
	17	18	19	20	21	22	23
DAM NYCA	570,322	562,586	548,270	540,250	516,216	477,728	468,212
DAM NON-NYCA	34,139	38,782	23,179	19,723	23,281	28,391	25,187
DAM WHEELS	8,525	8,575	8,400	8,400	8,400	8,400	8,400
DAM VIRTUAL	42,422	47,737	28,164	34,241	27,795	23,520	27,178
BALANCING NYCA	(70,875)	(76,877)	(86,190)	(63,944)	(48,030)	(63,784)	(37,532)
BALANCING NON-NYCA	5,902	1,007	958	1,816	11,938	5,110	248
BALANCING WHEELS	(4,325)	(5,778)	(6,054)	(7,217)	(8,400)	(8,200)	(7,661)
BALANCING VIRTUAL	(42,422)	(47,737)	(28,164)	(34,241)	(27,795)	(23,520)	(27,178)
UFE/LOSSES	89,347	87,818	73,485	70,816	78,233	74,306	63,813
	24	25	26	27	28	29	30
DAM NYCA	532,185	543,504	568,342	598,436	620,426	561,827	474,679
DAM NON-NYCA	24,733	23,746	35,089	42,415	28,744	18,292	21,260
DAM WHEELS	8,425	8,400	8,677	8,866	8,897	8,694	8,400
DAM VIRTUAL	31,602	40,561	40,028	54,219	44,857	50,344	14,983
BALANCING NYCA	(54,762)	(62,987)	(88,473)	(74,557)	(78,622)	(59,014)	(87,392)
BALANCING NON-NYCA	2,249	1,284	4,977	9,570	5,642	7,045	4,343
BALANCING WHEELS	(5,801)	(4,705)	(4,347)	(2,718)	(226)	(2,202)	(8,400)
BALANCING VIRTUAL	(31,602)	(40,561)	(40,028)	(54,219)	(44,857)	(50,344)	(14,983)
UFE/LOSSES	75,089	72,936	84,105	92,084	82,922	69,571	65,960
	31						
DAM NYCA	497,090						
DAM NON-NYCA	31,205						
DAM WHEELS	8,400						
DAM VIRTUAL	15,862						
BALANCING NYCA	(85,621)						
BALANCING NON-NYCA	5,267						
BALANCING WHEELS	(8,400)						
BALANCING VIRTUAL	(15,862)						
UFE/LOSSES	79,109						



**SETTLEMENTS REPORT**  
**July 2023 Settlement Adjustment**  
**December 7, 2023**

**4-Month Settlement Adjustment – Market Withdrawals Analysis**

	MONDAY	TUESDAY	WEDNESDAY	THURSDAY	FRIDAY	SATURDAY	SUNDAY
						1	2
DAM NYCA						459,383	456,816
DAM NON-NYCA						46,076	43,637
DAM WHEELS						1,825	9,242
DAM VIRTUAL						30,907	34,222
BALANCING NYCA						(60,853)	(47,626)
BALANCING NON-NYCA						3,955	(56)
BALANCING WHEELS						(1,825)	(9,242)
BALANCING VIRTUAL						(30,907)	(34,222)
UFE/LOSSES						80,743	80,643
						3	4
DAM NYCA	523,301	492,237	553,090	567,505	545,102	512,764	484,904
DAM NON-NYCA	46,442	44,852	43,572	53,410	49,681	32,495	27,184
DAM WHEELS	10,331	9,154	588	3,503	6,168	8,478	8,400
DAM VIRTUAL	49,220	46,449	47,906	55,292	38,841	44,589	38,448
BALANCING NYCA	(65,133)	(63,214)	(64,275)	(52,999)	(48,433)	(54,000)	(34,739)
BALANCING NON-NYCA	(2,924)	2,981	14,513	3,466	4,008	3,055	1,710
BALANCING WHEELS	(6,588)	(8,740)	(588)	(2,789)	(3,477)	(4,227)	(8,400)
BALANCING VIRTUAL	(49,220)	(46,449)	(47,906)	(55,292)	(38,841)	(44,589)	(38,448)
UFE/LOSSES	85,041	81,502	92,678	95,011	92,822	76,577	65,355
						8	9
DAM NYCA	529,729	544,015	561,823	561,906	550,677	520,931	512,650
DAM NON-NYCA	33,082	32,892	24,774	20,916	16,161	19,490	37,103
DAM WHEELS	8,400	8,425	8,850	8,400	8,400	8,472	8,491
DAM VIRTUAL	39,014	39,345	52,079	50,796	44,029	46,737	46,785
BALANCING NYCA	(65,547)	(76,276)	(58,092)	(50,359)	(56,999)	(42,527)	(59,981)
BALANCING NON-NYCA	1,608	7,156	6,597	10,559	4,454	5,549	2,450
BALANCING WHEELS	(8,375)	(7,890)	(6,750)	(7,200)	(2,518)	(5,268)	(7,791)
BALANCING VIRTUAL	(39,014)	(39,345)	(52,079)	(50,796)	(44,029)	(46,737)	(46,785)
UFE/LOSSES	78,249	81,008	74,516	83,837	70,856	71,552	86,929
						10	11
DAM NYCA	570,322	562,586	548,270	540,250	516,216	477,728	468,212
DAM NON-NYCA	34,139	38,782	23,179	19,723	23,281	28,391	25,187
DAM WHEELS	8,525	8,575	8,400	8,400	8,400	8,400	8,400
DAM VIRTUAL	42,422	47,737	28,164	34,241	27,795	23,520	27,178
BALANCING NYCA	(70,672)	(76,631)	(85,882)	(63,769)	(47,806)	(63,688)	(37,420)
BALANCING NON-NYCA	5,902	1,007	958	1,816	11,938	5,110	248
BALANCING WHEELS	(4,325)	(5,778)	(6,054)	(7,217)	(8,400)	(8,200)	(7,661)
BALANCING VIRTUAL	(42,422)	(47,737)	(28,164)	(34,241)	(27,795)	(23,520)	(27,178)
UFE/LOSSES	89,341	87,904	73,477	71,159	79,395	75,084	63,807
						17	18
DAM NYCA	532,185	543,504	568,342	598,436	620,426	561,827	474,679
DAM NON-NYCA	24,733	23,746	35,089	42,415	28,744	18,292	21,260
DAM WHEELS	8,425	8,400	8,677	8,866	8,897	8,694	8,400
DAM VIRTUAL	31,602	40,561	40,028	54,219	44,857	50,344	14,983
BALANCING NYCA	(54,684)	(62,902)	(88,399)	(74,471)	(78,526)	(59,320)	(87,655)
BALANCING NON-NYCA	2,249	1,284	4,977	9,570	5,642	7,045	4,343
BALANCING WHEELS	(5,801)	(4,705)	(4,347)	(2,718)	(226)	(2,202)	(8,400)
BALANCING VIRTUAL	(31,602)	(40,561)	(40,028)	(54,219)	(44,857)	(50,344)	(14,983)
UFE/LOSSES	75,085	72,934	84,139	92,102	83,933	70,868	65,997
						24	25
DAM NYCA	497,090	31,205	8,400	15,862	(85,597)	5,267	(8,400)
DAM NON-NYCA	31,205	8,400	15,862	(85,597)	5,267	(8,400)	(15,862)
DAM WHEELS	8,400	15,862	(85,597)	5,267	(8,400)	(15,862)	79,381
DAM VIRTUAL	15,862	(85,597)	5,267	(8,400)	(15,862)	79,381	
BALANCING NYCA	(85,597)	5,267	(8,400)	(15,862)	79,381		
BALANCING NON-NYCA	5,267	(8,400)	(15,862)	79,381			
BALANCING WHEELS	(8,400)	(15,862)	79,381				
BALANCING VIRTUAL	(15,862)	79,381					
UFE/LOSSES	79,381						

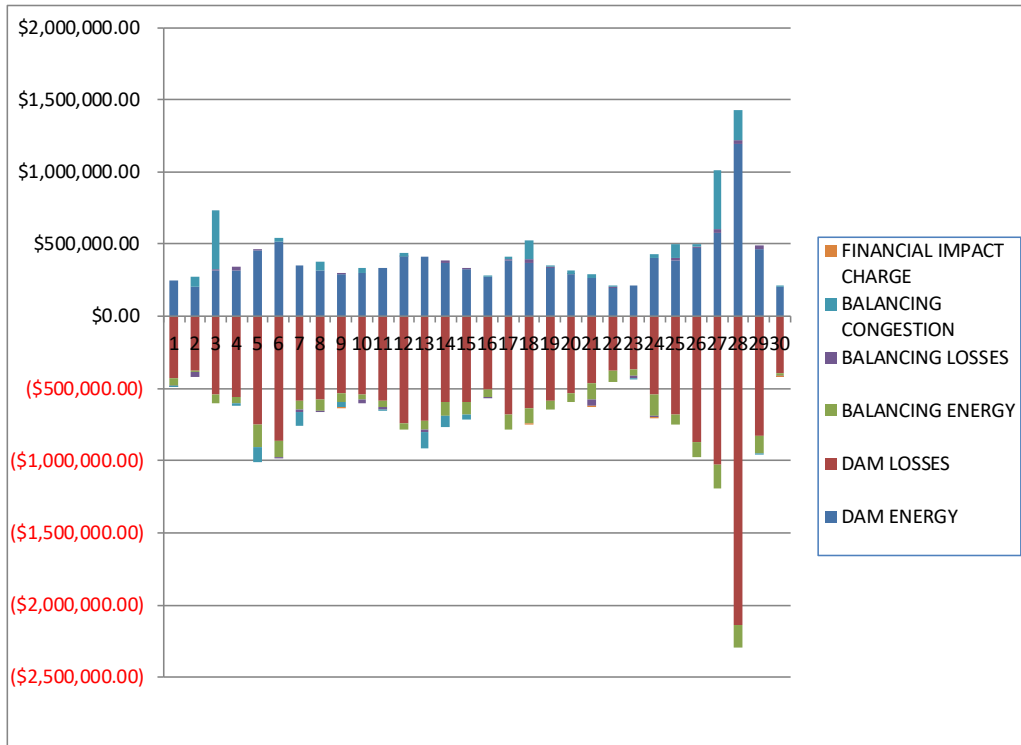




**SETTLEMENTS REPORT**  
**July 2023 Settlement Adjustment**  
**December 7, 2023**

**Initial Settlement – Market Residuals Analysis**

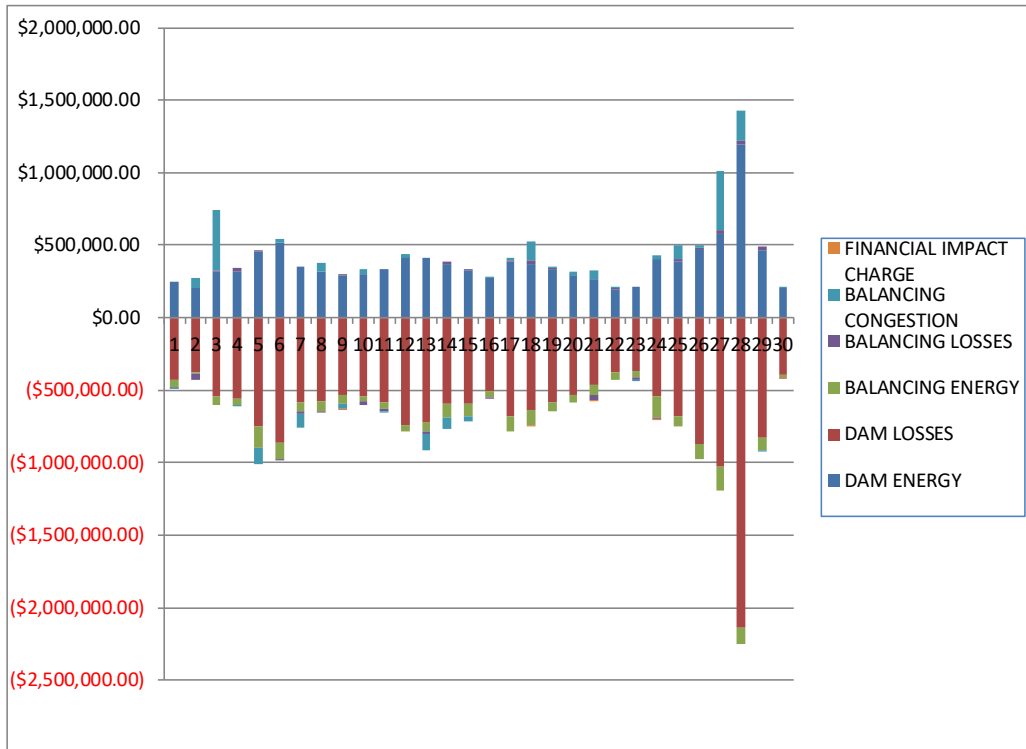
	MONDAY	TUESDAY	WEDNESDAY	THURSDAY	FRIDAY	SATURDAY	SUNDAY
						1	2
DAM ENERGY						\$249,973.55	\$203,149.13
DAM LOSSES						(\$433,127.36)	(\$375,177.95)
BALANCING ENERGY						(\$48,899.58)	(\$6,340.49)
BALANCING LOSSES						(\$1,146.07)	(\$39,451.92)
BALANCING CONGESTION						(\$2,270.48)	\$73,264.64
FINANCIAL IMPACT CHARGE						\$0.00	\$0.00
	3	4	5	6	7	8	9
DAM ENERGY	\$316,158.24	\$315,204.33	\$458,388.89	\$517,948.37	\$349,649.70	\$316,514.85	\$290,870.91
DAM LOSSES	(\$538,005.28)	(\$562,247.12)	(\$753,024.21)	(\$865,567.29)	(\$582,932.49)	(\$578,157.84)	(\$529,488.32)
BALANCING ENERGY	(\$67,439.69)	(\$43,243.62)	(\$150,098.76)	(\$110,123.16)	(\$61,579.54)	(\$73,263.67)	(\$67,732.03)
BALANCING LOSSES	\$10,614.37	\$23,829.15	\$2,956.28	(\$11,486.20)	(\$19,732.43)	(\$5,235.92)	\$9,058.01
BALANCING CONGESTION	\$410,338.22	(\$10,237.04)	(\$111,541.79)	\$27,795.35	(\$93,768.58)	\$58,855.59	(\$29,191.57)
FINANCIAL IMPACT CHARGE	\$0.00	\$0.00	\$0.00	\$0.00	\$0.00	\$0.00	(\$3.54)
	10	11	12	13	14	15	16
DAM ENERGY	\$302,143.14	\$335,176.33	\$416,315.50	\$415,184.62	\$371,211.63	\$327,595.15	\$274,727.83
DAM LOSSES	(\$540,337.29)	(\$583,338.26)	(\$739,762.83)	(\$723,948.28)	(\$594,512.65)	(\$591,281.03)	(\$509,670.58)
BALANCING ENERGY	(\$36,749.33)	(\$44,411.56)	(\$42,443.44)	(\$63,501.33)	(\$92,704.16)	(\$88,184.19)	(\$48,000.12)
BALANCING LOSSES	(\$24,209.09)	(\$17,664.88)	\$399.93	(\$13,215.70)	\$12,943.91	\$4,636.80	(\$477.04)
BALANCING CONGESTION	\$34,674.70	(\$7,875.29)	\$17,793.79	(\$115,667.80)	(\$82,593.78)	(\$36,220.23)	\$423.76
FINANCIAL IMPACT CHARGE	\$0.00	\$0.00	\$0.00	\$0.00	\$0.00	\$0.00	\$0.00
	17	18	19	20	21	22	23
DAM ENERGY	\$388,369.74	\$373,344.20	\$330,924.05	\$291,324.57	\$265,134.58	\$198,986.13	\$211,998.69
DAM LOSSES	(\$681,679.07)	(\$640,538.91)	(\$583,013.01)	(\$530,630.71)	(\$464,072.63)	(\$377,981.26)	(\$367,741.66)
BALANCING ENERGY	(\$98,927.87)	(\$101,247.84)	(\$60,510.56)	(\$67,127.81)	(\$111,804.58)	(\$72,814.48)	(\$42,720.42)
BALANCING LOSSES	\$8,604.30	\$24,700.52	\$11,583.05	\$283.36	(\$41,214.15)	\$5,802.95	(\$15,084.62)
BALANCING CONGESTION	\$17,186.55	\$128,336.62	\$7,215.00	\$22,021.40	\$24,843.59	\$914.74	(\$8,558.82)
FINANCIAL IMPACT CHARGE	\$0.00	(\$42.04)	\$0.00	\$0.00	(\$2,834.01)	\$0.00	\$0.00
	24	25	26	27	28	29	30
DAM ENERGY	\$401,381.80	\$383,346.10	\$476,692.37	\$573,721.24	\$1,190,192.24	\$467,125.54	\$201,936.84
DAM LOSSES	(\$538,932.04)	(\$677,996.91)	(\$873,613.65)	(\$1,025,982.78)	(\$2,141,602.02)	(\$825,522.48)	(\$393,463.47)
BALANCING ENERGY	(\$153,025.89)	(\$74,834.92)	(\$104,816.68)	(\$168,651.51)	(\$149,326.16)	(\$124,364.11)	(\$17,299.67)
BALANCING LOSSES	(\$3,699.48)	\$22,440.97	\$9,029.63	\$28,117.25	\$29,812.64	\$25,445.90	(\$3,666.48)
BALANCING CONGESTION	\$24,498.34	\$97,777.92	\$16,396.03	\$409,261.84	\$207,763.18	(\$12,599.28)	\$10,403.49
FINANCIAL IMPACT CHARGE	(\$1.67)	\$0.00	\$0.00	\$0.00	\$0.00	\$0.00	(\$1,125.29)
	31						
DAM ENERGY	\$214,995.88						
DAM LOSSES	(\$398,254.45)						
BALANCING ENERGY	(\$50,594.74)						
BALANCING LOSSES	(\$9,828.04)						
BALANCING CONGESTION	(\$5,389.24)						
FINANCIAL IMPACT CHARGE	\$0.00						



**SETTLEMENTS REPORT**  
**July 2023 Settlement Adjustment**  
**December 7, 2023**

**4-Month Settlement Adjustment – Market Residuals Analysis**

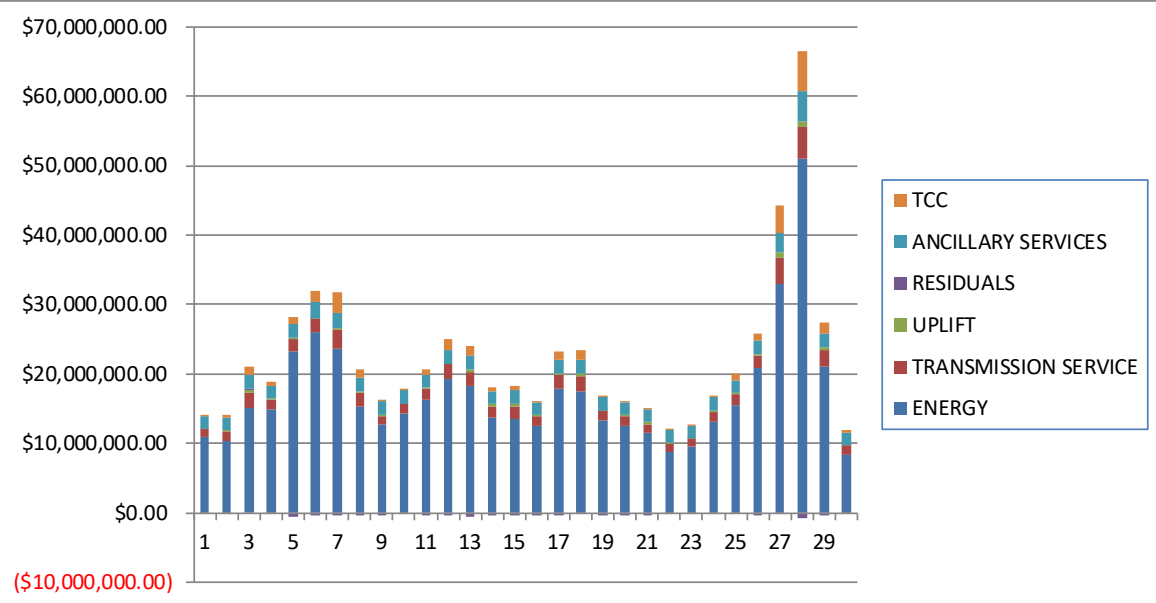
	MONDAY	TUESDAY	WEDNESDAY	THURSDAY	FRIDAY	SATURDAY	SUNDAY
						1	2
DAM ENERGY						\$249,973.55	\$203,149.14
DAM LOSSES						(\$433,127.36)	(\$375,177.96)
BALANCING ENERGY						(\$48,657.28)	(\$10,457.02)
BALANCING LOSSES						(\$1,089.60)	(\$39,732.31)
BALANCING CONGESTION						(\$2,226.49)	\$72,986.23
FINACIAL IMPACT CHARGE						\$0.00	\$0.00
	3	4	5	6	7	8	9
DAM ENERGY	\$316,158.23	\$315,204.33	\$458,388.89	\$517,948.36	\$349,649.70	\$316,514.86	\$290,870.91
DAM LOSSES	(\$538,005.29)	(\$562,247.13)	(\$753,024.21)	(\$865,567.28)	(\$582,932.49)	(\$578,157.85)	(\$529,488.32)
BALANCING ENERGY	(\$66,712.66)	(\$41,834.18)	(\$147,757.03)	(\$109,068.43)	(\$59,962.07)	(\$71,753.49)	(\$66,842.00)
BALANCING LOSSES	\$10,699.09	\$23,939.57	\$3,093.20	(\$11,301.23)	(\$20,195.16)	(\$5,094.05)	\$9,116.23
BALANCING CONGESTION	\$411,526.68	(\$10,237.05)	(\$111,525.74)	\$27,803.04	(\$93,773.71)	\$58,970.02	(\$29,217.93)
FINACIAL IMPACT CHARGE	\$0.00	\$0.00	\$0.00	\$0.00	\$0.00	\$0.00	(\$3.55)
	10	11	12	13	14	15	16
DAM ENERGY	\$302,143.14	\$335,176.32	\$416,315.50	\$415,184.62	\$371,211.63	\$327,595.15	\$274,727.82
DAM LOSSES	(\$540,337.29)	(\$583,338.26)	(\$739,762.84)	(\$723,948.28)	(\$594,512.66)	(\$591,281.03)	(\$509,670.59)
BALANCING ENERGY	(\$36,936.89)	(\$44,619.95)	(\$43,490.81)	(\$63,985.15)	(\$93,099.55)	(\$87,258.69)	(\$42,392.55)
BALANCING LOSSES	(\$24,178.83)	(\$17,636.83)	\$412.52	(\$13,076.01)	\$11,805.63	\$4,679.76	(\$190.15)
BALANCING CONGESTION	\$34,718.65	(\$7,820.56)	\$17,879.61	(\$115,073.87)	(\$82,593.15)	(\$36,083.81)	\$1,885.77
FINACIAL IMPACT CHARGE	\$0.00	\$0.00	\$0.00	\$0.00	\$0.00	\$0.00	\$0.00
	17	18	19	20	21	22	23
DAM ENERGY	\$388,369.73	\$373,344.20	\$330,924.06	\$291,324.57	\$265,134.58	\$198,986.13	\$211,998.69
DAM LOSSES	(\$681,679.07)	(\$640,538.92)	(\$583,013.01)	(\$530,630.71)	(\$464,072.63)	(\$377,981.26)	(\$367,741.66)
BALANCING ENERGY	(\$99,061.78)	(\$98,594.83)	(\$60,704.91)	(\$54,720.95)	(\$66,028.91)	(\$48,393.48)	(\$42,998.14)
BALANCING LOSSES	\$8,387.35	\$24,711.75	\$11,379.87	\$777.93	(\$41,289.28)	\$6,156.85	(\$15,257.29)
BALANCING CONGESTION	\$17,330.38	\$128,347.13	\$7,258.74	\$21,727.14	\$56,782.43	\$1,079.40	(\$8,567.56)
FINACIAL IMPACT CHARGE	\$0.00	(\$42.08)	\$0.00	\$0.00	(\$2,834.03)	\$0.00	\$0.00
	24	25	26	27	28	29	30
DAM ENERGY	\$401,381.80	\$383,346.10	\$476,692.37	\$573,721.23	\$1,190,192.24	\$467,125.54	\$201,936.84
DAM LOSSES	(\$538,932.03)	(\$677,996.92)	(\$873,613.64)	(\$1,025,982.78)	(\$2,141,602.02)	(\$825,522.48)	(\$393,463.48)
BALANCING ENERGY	(\$153,145.80)	(\$74,933.33)	(\$103,574.13)	(\$168,006.33)	(\$110,170.83)	(\$91,828.18)	(\$16,738.41)
BALANCING LOSSES	(\$3,857.15)	\$22,208.00	\$8,119.63	\$25,915.00	\$30,987.69	\$26,599.12	(\$3,521.76)
BALANCING CONGESTION	\$24,460.65	\$97,822.14	\$17,022.63	\$412,510.93	\$208,103.97	(\$1,554.14)	\$10,403.48
FINACIAL IMPACT CHARGE	(\$1.68)	\$0.00	\$0.00	\$0.00	\$0.00	\$0.00	(\$1,125.31)
	31						
DAM ENERGY	\$214,995.87						
DAM LOSSES	(\$398,254.46)						
BALANCING ENERGY	(\$40,739.17)						
BALANCING LOSSES	(\$9,181.00)						
BALANCING CONGESTION	(\$5,467.89)						
FINACIAL IMPACT CHARGE	\$0.00						



**SETTLEMENTS REPORT**  
 July 2023 Settlement Adjustment  
 December 7, 2023

**Initial Settlement – Market Costs Analysis**

	MONDAY	TUESDAY	WEDNESDAY	THURSDAY	FRIDAY	SATURDAY	SUNDAY
ENERGY						1	2
TRANSMISSION SERVICE						\$10,845,063.64	\$10,379,092.97
UPLIFT						\$46,900.46	\$83,114.84
RESIDUALS						(\$235,469.94)	(\$144,556.59)
ANCILLARY SERVICES						\$1,821,340.38	\$1,796,624.66
TCC						\$115,865.95	\$465,962.56
	3	4	5	6	7	8	9
ENERGY	\$15,172,631.88	\$14,843,755.10	\$23,249,120.37	\$25,999,017.31	\$23,622,684.31	\$15,278,572.78	\$12,655,641.12
TRANSMISSION SERVICE	\$2,141,665.78	\$1,451,288.15	\$1,723,952.36	\$1,907,427.06	\$2,738,745.55	\$1,930,451.45	\$1,336,684.64
UPLIFT	\$378,292.91	\$151,626.59	\$227,162.71	\$146,694.20	\$264,873.59	\$179,087.58	\$102,268.82
RESIDUALS	\$131,665.86	(\$276,694.30)	(\$553,319.59)	(\$441,432.93)	(\$408,363.34)	(\$281,286.99)	(\$326,486.54)
ANCILLARY SERVICES	\$1,956,609.90	\$1,877,545.92	\$2,073,216.95	\$2,312,092.10	\$2,234,891.40	\$2,055,998.25	\$1,919,002.14
TCC	\$1,339,626.10	\$464,476.97	\$878,433.87	\$1,597,088.79	\$2,958,334.16	\$1,115,452.96	\$132,552.32
	10	11	12	13	14	15	16
ENERGY	\$14,269,883.76	\$16,286,048.77	\$19,259,608.83	\$18,219,557.53	\$13,763,958.37	\$13,582,083.14	\$12,537,689.68
TRANSMISSION SERVICE	\$1,388,936.67	\$1,649,601.26	\$2,086,686.88	\$2,043,318.83	\$1,578,424.40	\$1,724,621.21	\$1,384,218.69
UPLIFT	\$93,936.94	\$106,718.71	\$180,200.78	\$289,434.72	\$251,974.24	\$332,505.41	\$104,942.59
RESIDUALS	(\$264,477.87)	(\$318,113.66)	(\$347,697.05)	(\$501,148.49)	(\$385,655.05)	(\$383,453.50)	(\$282,996.15)
ANCILLARY SERVICES	\$1,938,612.51	\$1,899,703.89	\$1,955,590.15	\$2,031,491.38	\$1,940,648.88	\$1,951,710.03	\$1,888,035.61
TCC	\$179,486.69	\$791,775.64	\$1,586,210.32	\$1,395,563.47	\$503,093.11	\$748,793.73	\$205,914.40
	17	18	19	20	21	22	23
ENERGY	\$17,850,962.58	\$17,497,421.54	\$13,212,825.24	\$12,539,457.52	\$11,543,360.77	\$8,838,688.40	\$9,591,232.61
TRANSMISSION SERVICE	\$1,979,288.12	\$2,252,811.34	\$1,426,824.24	\$1,286,407.08	\$1,256,643.94	\$1,154,406.95	\$1,106,802.77
UPLIFT	\$156,996.13	\$262,118.63	\$123,037.57	\$295,551.10	\$336,325.78	\$123,810.36	\$87,424.02
RESIDUALS	(\$366,446.35)	(\$215,447.45)	(\$293,801.47)	(\$284,129.19)	(\$329,947.20)	(\$245,091.92)	(\$222,106.83)
ANCILLARY SERVICES	\$2,109,042.81	\$1,949,526.51	\$1,887,079.17	\$1,846,362.45	\$1,826,414.14	\$1,754,633.99	\$1,758,186.43
TCC	\$1,140,682.64	\$1,444,590.06	\$287,432.14	\$154,851.22	\$106,838.42	\$170,665.73	\$42,166.42
	24	25	26	27	28	29	30
ENERGY	\$13,141,998.74	\$15,446,368.61	\$20,872,313.53	\$32,994,691.46	\$50,960,670.30	\$21,111,894.90	\$8,438,606.94
TRANSMISSION SERVICE	\$1,391,030.81	\$1,582,131.57	\$1,731,104.07	\$3,679,816.32	\$4,615,019.07	\$2,288,611.02	\$1,223,589.12
UPLIFT	\$201,490.45	\$152,988.51	\$161,490.45	\$783,554.30	\$861,780.77	\$369,059.79	\$55,708.74
RESIDUALS	(\$269,778.94)	(\$249,266.84)	(\$476,312.30)	(\$183,533.96)	(\$863,160.12)	(\$469,914.43)	(\$203,214.58)
ANCILLARY SERVICES	\$1,885,831.10	\$1,964,003.13	\$2,109,545.24	\$2,755,169.45	\$4,357,441.40	\$2,077,438.50	\$1,734,805.32
TCC	\$323,553.55	\$841,803.92	\$985,119.24	\$4,000,857.63	\$5,698,098.75	\$1,591,429.03	\$406,044.07
	31						
ENERGY	\$9,013,421.04						
TRANSMISSION SERVICE	\$1,339,189.07						
UPLIFT	\$50,508.76						
RESIDUALS	(\$249,070.59)						
ANCILLARY SERVICES	\$1,804,874.67						
TCC	\$448,294.56						



SETTLEMENTS REPORT  
 July 2023 Settlement Adjustment  
 December 7, 2023

**4-Month Settlement Adjustment – Market Costs Analysis**

	MONDAY	TUESDAY	WEDNESDAY	THURSDAY	FRIDAY	SATURDAY	SUNDAY
ENERGY						1	2
TRANSMISSION SERVICE						\$10,849,351.27	\$10,386,564.98
UPLIFT						\$46,900.36	\$83,114.84
RESIDUALS						(\$235,127.18)	(\$149,231.92)
ANCILLARY SERVICES						\$1,825,514.62	\$1,800,087.94
TCC						\$115,865.95	\$465,962.56
	3	4	5	6	7	8	9
ENERGY	\$15,169,883.19	\$14,841,613.98	\$23,252,390.34	\$26,002,377.06	\$23,625,052.82	\$15,279,003.78	\$12,657,983.77
TRANSMISSION SERVICE	\$2,139,535.50	\$1,449,141.46	\$1,722,506.97	\$1,905,758.17	\$2,737,490.03	\$1,928,762.81	\$1,335,570.41
UPLIFT	\$378,292.91	\$151,539.46	\$227,159.79	\$146,694.27	\$267,016.19	\$179,087.57	\$102,268.92
RESIDUALS	\$133,666.05	(\$275,174.46)	(\$550,824.89)	(\$440,185.54)	(\$407,213.73)	(\$279,520.51)	(\$325,564.66)
ANCILLARY SERVICES	\$1,960,261.73	\$1,881,172.82	\$2,077,382.38	\$2,316,004.57	\$2,239,188.39	\$2,059,981.92	\$1,923,404.17
TCC	\$1,339,626.10	\$464,476.97	\$878,433.87	\$1,597,088.79	\$2,958,334.16	\$1,115,452.96	\$132,552.32
	10	11	12	13	14	15	16
ENERGY	\$14,280,648.14	\$16,294,280.46	\$19,268,805.01	\$18,221,381.44	\$13,769,244.34	\$13,587,575.56	\$12,541,254.31
TRANSMISSION SERVICE	\$1,388,212.12	\$1,648,080.27	\$2,085,957.56	\$2,042,223.75	\$1,577,293.04	\$1,723,135.25	\$1,382,994.40
UPLIFT	\$93,936.94	\$106,721.13	\$180,199.74	\$289,435.33	\$251,974.70	\$332,505.42	\$105,996.40
RESIDUALS	(\$264,591.22)	(\$318,239.28)	(\$348,646.02)	(\$500,898.69)	(\$387,188.10)	(\$382,348.62)	(\$275,639.70)
ANCILLARY SERVICES	\$1,943,405.58	\$1,903,905.74	\$1,960,368.82	\$2,035,918.91	\$1,946,437.21	\$1,955,881.06	\$1,892,420.18
TCC	\$179,486.69	\$791,775.64	\$1,586,210.32	\$1,395,563.47	\$501,711.37	\$748,793.73	\$205,914.40
	17	18	19	20	21	22	23
ENERGY	\$17,858,167.82	\$17,504,997.20	\$13,220,914.74	\$12,544,459.05	\$11,551,374.73	\$8,841,460.54	\$9,594,969.84
TRANSMISSION SERVICE	\$1,978,404.60	\$2,251,555.68	\$1,425,468.80	\$1,285,033.59	\$1,255,768.52	\$1,153,172.44	\$1,105,426.35
UPLIFT	\$156,995.99	\$262,191.44	\$123,037.57	\$297,662.46	\$336,492.63	\$123,868.60	\$87,424.02
RESIDUALS	(\$366,653.39)	(\$212,772.75)	(\$294,155.25)	(\$271,522.02)	(\$252,307.84)	(\$220,152.36)	(\$222,565.96)
ANCILLARY SERVICES	\$2,113,644.26	\$1,953,882.28	\$1,891,395.49	\$1,850,965.85	\$1,832,256.21	\$1,760,744.48	\$1,762,414.37
TCC	\$1,140,682.64	\$1,444,590.06	\$287,432.14	\$154,851.22	\$106,838.42	\$170,665.73	\$42,166.42
	24	25	26	27	28	29	30
ENERGY	\$13,144,729.39	\$15,449,222.09	\$20,873,182.11	\$32,997,226.02	\$50,964,427.44	\$21,104,207.75	\$8,433,796.15
TRANSMISSION SERVICE	\$1,389,017.97	\$1,579,465.53	\$1,728,679.83	\$3,678,601.13	\$4,613,946.16	\$2,286,384.50	\$1,220,595.92
UPLIFT	\$201,490.46	\$152,987.97	\$161,489.40	\$783,530.44	\$863,111.70	\$376,017.73	\$55,708.75
RESIDUALS	(\$270,094.21)	(\$249,554.01)	(\$475,353.14)	(\$181,841.95)	(\$822,488.95)	(\$425,180.14)	(\$202,508.64)
ANCILLARY SERVICES	\$1,889,598.39	\$1,967,315.14	\$2,113,153.42	\$2,759,505.51	\$4,364,752.68	\$2,083,296.55	\$1,737,762.74
TCC	\$323,553.55	\$841,803.92	\$985,119.24	\$4,000,857.63	\$5,698,098.75	\$1,591,429.03	\$406,044.07
	31						
ENERGY	\$9,013,666.39						
TRANSMISSION SERVICE	\$1,337,595.06						
UPLIFT	\$50,518.45						
RESIDUALS	(\$238,646.65)						
ANCILLARY SERVICES	\$1,809,149.71						
TCC	\$448,294.56						

