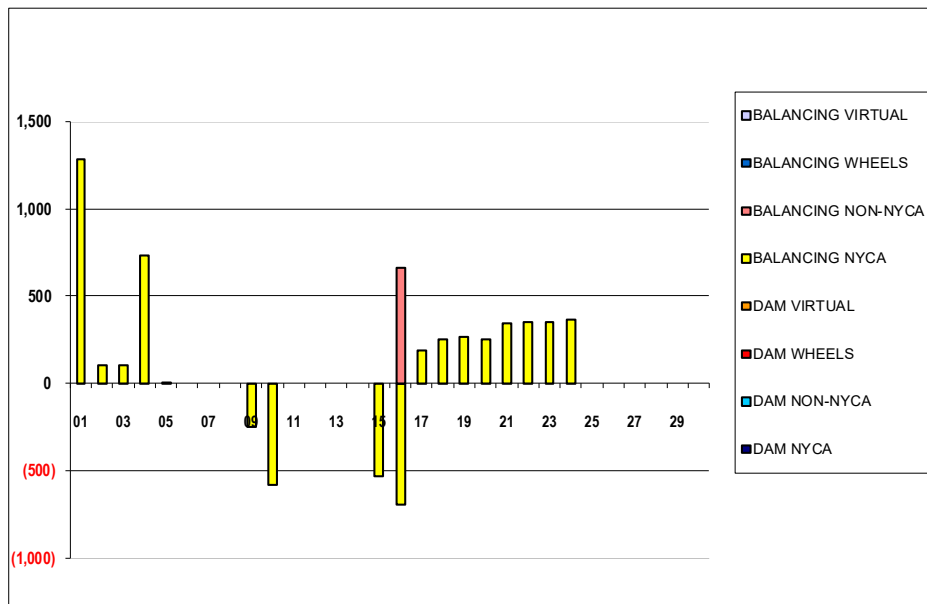


SETTLEMENTS REPORT  
November 2023 Settlement Adjustment  
December 7, 2023

**Initial – Market Supply Delta Analysis**

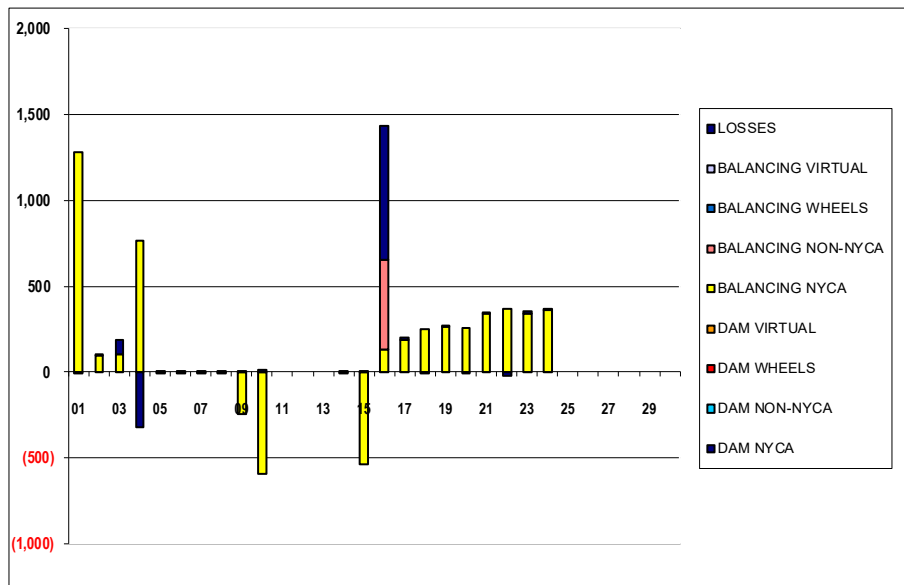
	MONDAY	TUESDAY	WEDNESDAY	THURSDAY	FRIDAY	SATURDAY	SUNDAY
			1	2	3	4	5
DAM NYCA			0	0	0	0	0
DAM NON-NYCA			0	0	0	0	0
DAM WHEELS			0	0	0	0	0
DAM VIRTUAL			0	0	0	0	0
BALANCING NYCA			1,282	105	103	730	0
BALANCING NON-NYCA			0	0	0	0	0
BALANCING WHEELS			0	0	0	0	0
BALANCING VIRTUAL			0	0	0	0	0
	6	7	8	9	10	11	12
DAM NYCA	0	0	0	0	0	0	0
DAM NON-NYCA	0	0	0	0	0	0	0
DAM WHEELS	0	0	0	0	0	0	0
DAM VIRTUAL	0	0	0	0	0	0	0
BALANCING NYCA	0	0	0	(247)	(581)	0	0
BALANCING NON-NYCA	0	0	0	0	0	0	0
BALANCING WHEELS	0	0	0	0	0	0	0
BALANCING VIRTUAL	0	0	0	0	0	0	0
	13	14	15	16	17	18	19
DAM NYCA	0	0	0	0	0	0	0
DAM NON-NYCA	0	0	0	0	0	0	0
DAM WHEELS	0	0	0	0	0	0	0
DAM VIRTUAL	0	0	0	0	0	0	0
BALANCING NYCA	0	0	(535)	(696)	186	251	269
BALANCING NON-NYCA	0	0	0	664	0	0	0
BALANCING WHEELS	0	0	0	0	0	0	0
BALANCING VIRTUAL	0	0	0	0	0	0	0
	20	21	22	23	24	25	26
DAM NYCA	0	0	0	0	0	0	0
DAM NON-NYCA	0	0	0	0	0	0	0
DAM WHEELS	0	0	0	0	0	0	0
DAM VIRTUAL	0	0	0	0	0	0	0
BALANCING NYCA	256	343	350	354	368	0	0
BALANCING NON-NYCA	0	0	0	0	0	0	0
BALANCING WHEELS	0	0	0	0	0	0	0
BALANCING VIRTUAL	0	0	0	0	0	0	0
	27	28	29	30			
DAM NYCA	0	0	0	0			
DAM NON-NYCA	0	0	0	0			
DAM WHEELS	0	0	0	0			
DAM VIRTUAL	0	0	0	0			
BALANCING NYCA	0	0	0	0			
BALANCING NON-NYCA	0	0	0	0			
BALANCING WHEELS	0	0	0	0			
BALANCING VIRTUAL	0	0	0	0			



SETTLEMENTS REPORT  
November 2023 Settlement Adjustment  
December 7, 2023

**Initial – Market Withdrawals Delta Analysis**

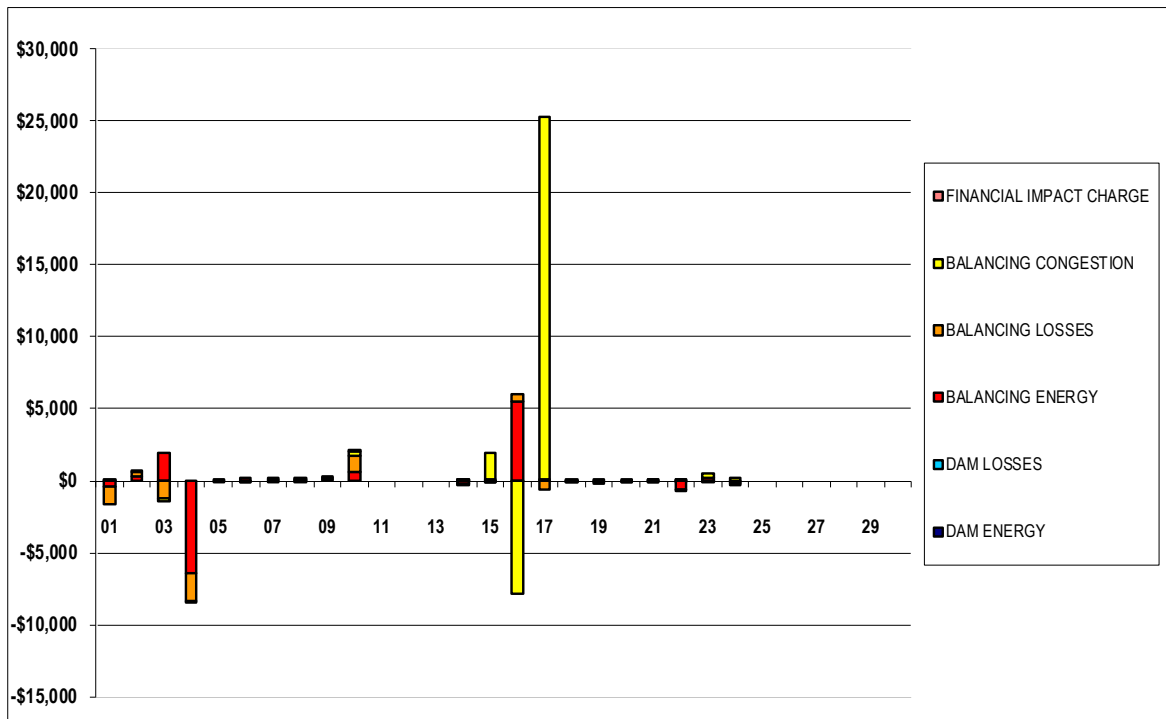
	MONDAY	TUESDAY	WEDNESDAY	THURSDAY	FRIDAY	SATURDAY	SUNDAY
			1	2	3	4	5
DAM NYCA			0	0	0	0	0
DAM NON-NYCA			0	0	0	0	0
DAM WHEELS			0	0	0	0	0
DAM VIRTUAL			0	0	0	0	0
BALANCING NYCA			1,283	95	103	763	0
BALANCING NON-NYCA			0	0	0	0	0
BALANCING WHEELS			0	0	0	0	0
BALANCING VIRTUAL			0	0	0	0	0
UFE/LOSSES			(8)	10	85	(324)	(0)
	6	7	8	9	10	11	12
DAM NYCA	0	0	0	0	0	0	0
DAM NON-NYCA	0	0	0	0	0	0	0
DAM WHEELS	0	0	0	0	0	0	0
DAM VIRTUAL	0	0	0	0	0	0	0
BALANCING NYCA	(6)	1	0	(247)	(593)	0	0
BALANCING NON-NYCA	0	0	0	0	0	0	0
BALANCING WHEELS	0	0	0	0	0	0	0
BALANCING VIRTUAL	0	0	0	0	0	0	0
UFE/LOSSES	6	(1)	(0)	0	12	0	0
	13	14	15	16	17	18	19
DAM NYCA	0	0	0	0	0	0	0
DAM NON-NYCA	0	0	0	0	0	0	0
DAM WHEELS	0	0	0	0	0	0	0
DAM VIRTUAL	0	0	0	0	0	0	0
BALANCING NYCA	0	6	(535)	133	187	251	263
BALANCING NON-NYCA	0	0	0	518	0	0	0
BALANCING WHEELS	0	0	0	0	0	0	0
BALANCING VIRTUAL	0	0	0	0	0	0	0
UFE/LOSSES	0	(6)	0	781	14	(0)	6
	20	21	22	23	24	25	26
DAM NYCA	0	0	0	0	0	0	0
DAM NON-NYCA	0	0	0	0	0	0	0
DAM WHEELS	0	0	0	0	0	0	0
DAM VIRTUAL	0	0	0	0	0	0	0
BALANCING NYCA	256	343	371	337	360	0	0
BALANCING NON-NYCA	0	0	0	0	0	0	0
BALANCING WHEELS	0	0	0	0	0	0	0
BALANCING VIRTUAL	0	0	0	0	0	0	0
UFE/LOSSES	(0)	0	(21)	18	8	0	0
	27	28	29	30			
DAM NYCA	0	0	0	0			
DAM NON-NYCA	0	0	0	0			
DAM WHEELS	0	0	0	0			
DAM VIRTUAL	0	0	0	0			
BALANCING NYCA	0	0	0	0			
BALANCING NON-NYCA	0	0	0	0			
BALANCING WHEELS	0	0	0	0			
BALANCING VIRTUAL	0	0	0	0			
UFE/LOSSES	0	0	0	0			



SETTLEMENTS REPORT  
November 2023 Settlement Adjustment  
December 7, 2023

**Initial – Market Residuals Delta Analysis**

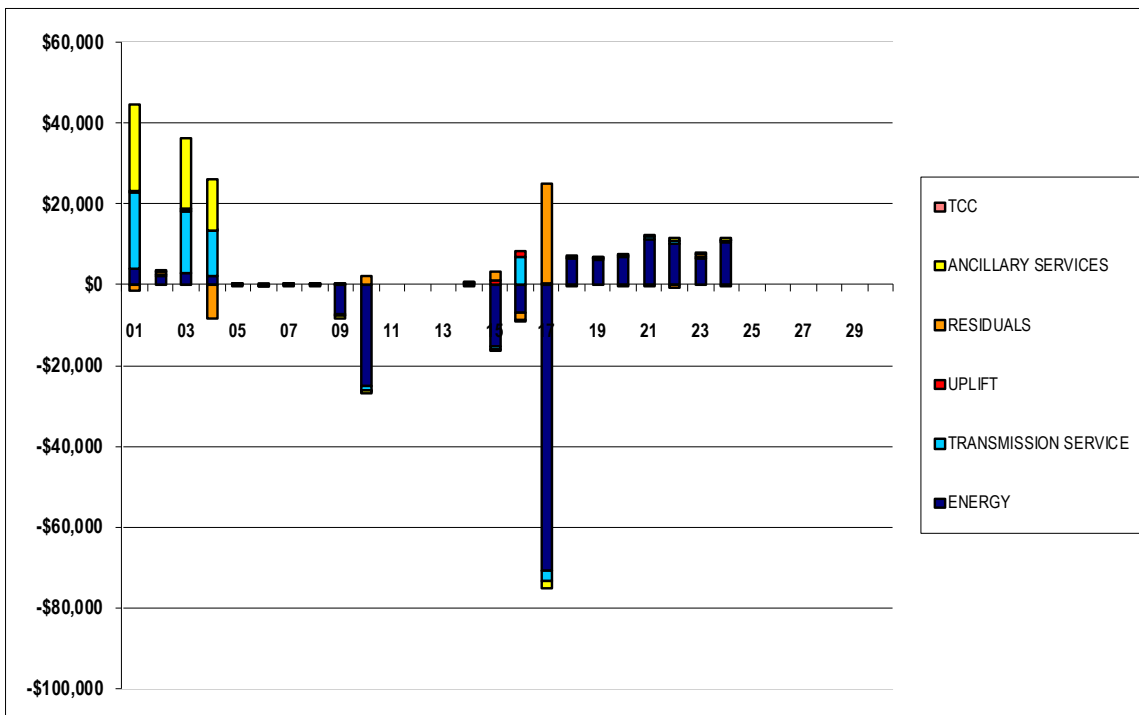
	MONDAY	TUESDAY	WEDNESDAY	THURSDAY	FRIDAY	SATURDAY	SUNDAY
			1	2	3	4	5
DAM ENERGY			\$0.01	\$0.00	\$0.00	\$0.00	\$0.00
DAM LOSSES			\$0.00	\$0.00	\$0.00	\$0.00	\$0.00
BALANCING ENERGY			(\$355.90)	\$275.94	\$1,983.92	(\$6,398.95)	\$4.79
BALANCING LOSSES			(\$1,234.23)	\$374.95	(\$1,216.39)	(\$1,955.38)	(\$6.81)
BALANCING CONGESTION			\$145.95	\$43.63	(\$161.46)	(\$52.22)	\$0.00
FINANCIAL IMPACT CHARGE			\$0.00	\$0.00	\$0.00	\$0.00	\$0.00
	6	7	8	9	10	11	12
DAM ENERGY	\$0.01	\$0.00	\$0.00	\$0.01	\$0.00	\$0.00	\$0.00
DAM LOSSES	\$0.00	\$0.00	\$0.00	\$0.00	\$0.00	\$0.00	\$0.00
BALANCING ENERGY	\$213.65	(\$33.01)	(\$1.36)	\$72.81	\$604.66	\$0.00	\$0.00
BALANCING LOSSES	(\$15.39)	\$59.68	\$56.56	\$131.15	\$1,084.42	\$0.00	\$0.00
BALANCING CONGESTION	(\$19.05)	\$1.70	\$2.83	\$24.03	\$361.37	\$0.00	\$0.00
FINANCIAL IMPACT CHARGE	\$0.00	\$0.00	\$0.00	\$0.00	\$0.12	\$0.00	\$0.00
	13	14	15	16	17	18	19
DAM ENERGY	\$0.00	\$0.00	(\$0.01)	\$0.00	\$0.00	\$0.00	\$0.00
DAM LOSSES	\$0.00	\$0.00	(\$0.01)	\$0.01	\$0.00	\$0.00	\$0.00
BALANCING ENERGY	\$0.00	(\$198.29)	(\$12.44)	\$5,511.12	\$112.11	\$1.10	\$123.03
BALANCING LOSSES	\$0.00	(\$8.90)	\$84.76	\$520.36	(\$594.34)	(\$38.65)	(\$50.22)
BALANCING CONGESTION	\$0.00	\$0.15	\$1,853.07	(\$7,892.64)	\$25,217.86	(\$82.96)	(\$7.05)
FINANCIAL IMPACT CHARGE	\$0.00	\$0.02	\$0.00	\$0.00	\$0.01	\$0.00	\$0.00
	20	21	22	23	24	25	26
DAM ENERGY	\$0.00	\$0.00	\$0.00	\$0.00	\$0.00	\$0.00	\$0.00
DAM LOSSES	\$0.00	\$0.00	(\$0.01)	\$0.00	\$0.00	\$0.00	\$0.00
BALANCING ENERGY	(\$1.72)	\$6.57	(\$564.65)	\$183.36	(\$122.01)	\$0.00	\$0.00
BALANCING LOSSES	(\$90.30)	(\$44.80)	(\$114.16)	(\$14.09)	(\$117.14)	\$0.00	\$0.00
BALANCING CONGESTION	\$18.00	\$14.93	\$23.55	\$321.16	\$181.72	\$0.00	\$0.00
FINANCIAL IMPACT CHARGE	\$0.00	(\$0.02)	\$0.01	\$0.00	(\$0.03)	\$0.00	\$0.00
	27	28	29	30			
DAM ENERGY	\$0.00	\$0.00	\$0.00	\$0.00			
DAM LOSSES	\$0.00	\$0.00	\$0.00	\$0.00			
BALANCING ENERGY	\$0.00	\$0.00	\$0.00	\$0.00			
BALANCING LOSSES	\$0.00	\$0.00	\$0.00	\$0.00			
BALANCING CONGESTION	\$0.00	\$0.00	\$0.00	\$0.00			
FINANCIAL IMPACT CHARGE	\$0.00	\$0.00	\$0.00	\$0.00			



SETTLEMENTS REPORT  
November 2023 Settlement Adjustment  
December 7, 2023

**Initial – Market Costs Delta Analysis**

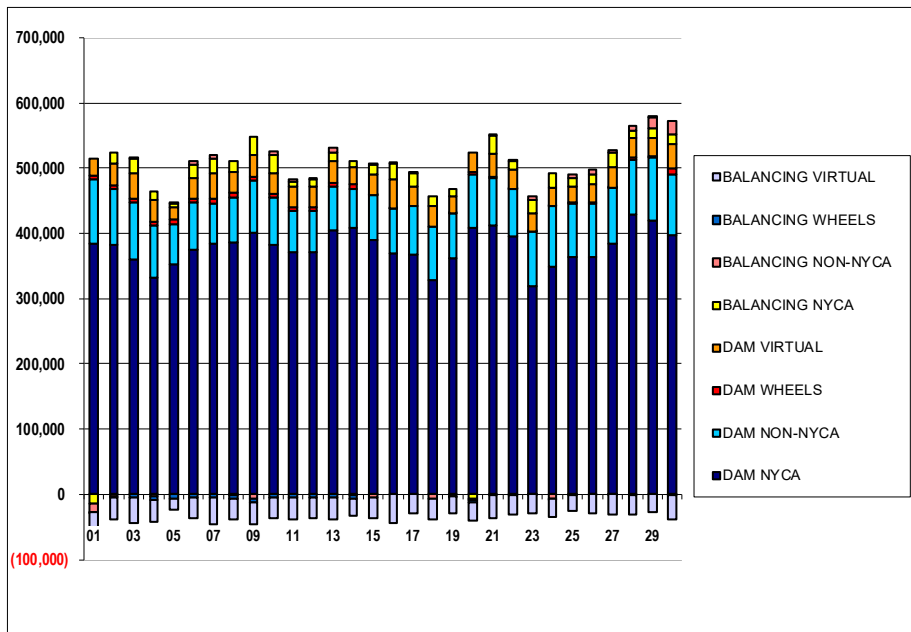
	MONDAY	TUESDAY	WEDNESDAY	THURSDAY	FRIDAY	SATURDAY	SUNDAY
			1	2	3	4	5
ENERGY			\$3,917.57	\$2,251.78	\$2,894.51	\$2,137.73	\$0.05
TRANSMISSION SERVICE			\$19,124.48	\$141.86	\$15,366.35	\$11,368.06	\$0.23
UPLIFT			\$75.06	\$0.00	\$87.81	\$0.01	\$0.00
RESIDUALS			(\$1,444.17)	\$694.52	\$606.07	(\$8,406.55)	(\$2.02)
ANCILLARY SERVICES			\$21,469.12	\$162.49	\$17,279.39	\$12,680.68	\$0.23
TCC			\$0.00	\$0.00	\$0.00	\$0.00	\$0.00
	6	7	8	9	10	11	12
ENERGY	(\$179.28)	(\$28.21)	(\$58.01)	(\$7,414.48)	(\$25,151.21)	\$0.00	\$0.00
TRANSMISSION SERVICE	(\$8.59)	\$1.47	\$0.26	(\$368.28)	(\$884.30)	\$0.00	\$0.00
UPLIFT	\$0.00	\$0.00	(\$0.01)	\$12.48	(\$0.35)	\$0.00	\$0.00
RESIDUALS	\$179.22	\$28.37	\$58.03	\$228.00	\$2,050.57	\$0.00	\$0.00
ANCILLARY SERVICES	(\$9.68)	\$1.31	\$0.23	(\$413.62)	(\$990.56)	\$0.00	\$0.00
TCC	\$0.00	\$0.00	\$0.00	\$0.00	\$0.00	\$0.00	\$0.00
	13	14	15	16	17	18	19
ENERGY	\$0.00	\$207.07	(\$15,121.45)	(\$6,896.97)	(\$70,798.61)	\$6,627.30	\$6,077.71
TRANSMISSION SERVICE	\$0.00	\$9.11	(\$797.33)	\$6,917.84	(\$2,796.65)	\$374.51	\$391.63
UPLIFT	\$0.00	\$0.01	\$1,246.39	\$1,606.91	\$408.82	(\$0.01)	\$0.00
RESIDUALS	\$0.00	(\$207.02)	\$1,925.37	(\$1,861.15)	\$24,735.64	(\$120.51)	\$65.76
ANCILLARY SERVICES	\$0.00	\$8.15	(\$449.09)	(\$374.04)	(\$1,748.75)	\$420.50	\$440.05
TCC	\$0.00	\$0.00	\$0.00	\$0.00	\$0.00	\$0.00	\$0.00
	20	21	22	23	24	25	26
ENERGY	\$6,937.73	\$11,401.54	\$10,323.46	\$6,506.61	\$10,449.53	\$0.00	\$0.00
TRANSMISSION SERVICE	\$381.07	\$510.64	\$552.50	\$501.84	\$536.52	\$0.00	\$0.00
UPLIFT	\$0.00	\$0.01	\$0.00	\$0.00	\$0.01	\$0.00	\$0.00
RESIDUALS	(\$74.02)	(\$23.32)	(\$655.26)	\$490.43	(\$57.46)	\$0.00	\$0.00
ANCILLARY SERVICES	\$427.85	\$573.37	\$613.30	\$569.83	\$605.02	\$0.00	\$0.00
TCC	\$0.00	\$0.00	\$0.00	\$0.00	\$0.00	\$0.00	\$0.00
	27	28	29	30			
ENERGY	\$0.00	\$0.00	\$0.00	\$0.00			
TRANSMISSION SERVICE	\$0.00	\$0.00	\$0.00	\$0.00			
UPLIFT	\$0.00	\$0.00	\$0.00	\$0.00			
RESIDUALS	\$0.00	\$0.00	\$0.00	\$0.00			
ANCILLARY SERVICES	\$0.00	\$0.00	\$0.00	\$0.00			
TCC	\$0.00	\$0.00	\$0.00	\$0.00			



**SETTLEMENTS REPORT**  
 November 2023 Settlement Adjustment  
 December 7, 2023

**Weekly Settlement – Market Supply Analysis**

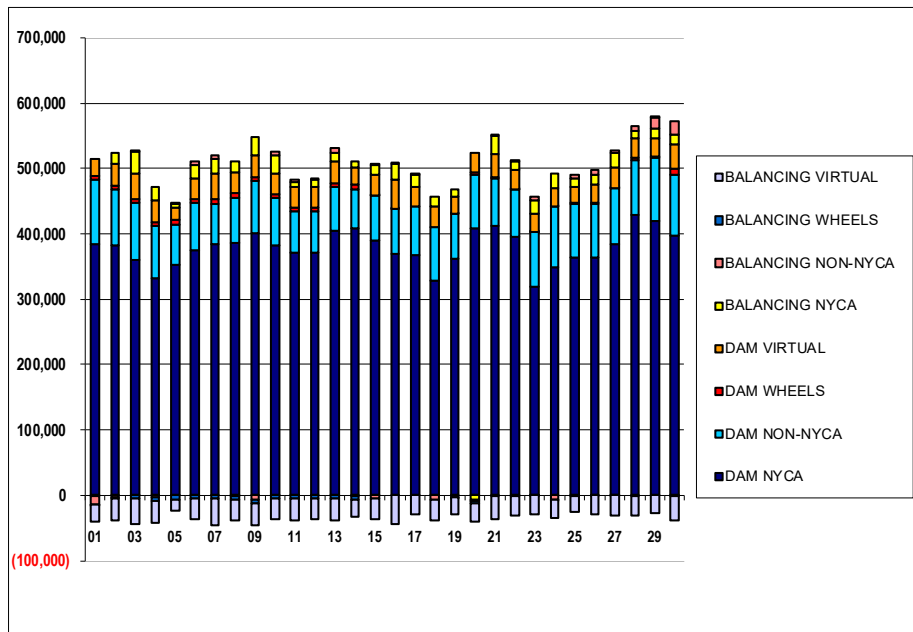
	MONDAY	TUESDAY	WEDNESDAY	THURSDAY	FRIDAY	SATURDAY	SUNDAY
			1	2	3	4	5
DAM NYCA			384,184	381,690	359,377	331,417	351,901
DAM NON-NYCA			98,942	85,909	87,647	80,512	63,096
DAM WHEELS			6,024	6,408	6,408	6,408	6,975
DAM VIRTUAL			25,319	33,467	38,637	33,312	17,792
BALANCING NYCA			(14,176)	15,706	22,719	12,031	6,724
BALANCING NON-NYCA			(12,464)	(2,766)	741	(2,610)	1,759
BALANCING WHEELS			(391)	(2,236)	(4,829)	(6,408)	(6,139)
BALANCING VIRTUAL			(25,319)	(33,467)	(38,637)	(33,312)	(17,792)
	6	7	8	9	10	11	12
DAM NYCA	375,640	385,212	386,130	401,307	381,582	371,895	370,450
DAM NON-NYCA	72,744	61,198	69,220	80,184	72,751	61,820	63,810
DAM WHEELS	5,562	6,543	6,808	5,692	6,408	6,408	6,433
DAM VIRTUAL	31,328	40,167	32,311	32,250	32,119	32,147	30,627
BALANCING NYCA	19,946	22,316	17,004	28,414	27,449	7,764	11,216
BALANCING NON-NYCA	6,407	4,914	(620)	(7,583)	6,371	2,142	1,600
BALANCING WHEELS	(4,455)	(5,275)	(6,187)	(5,605)	(4,657)	(5,280)	(4,943)
BALANCING VIRTUAL	(31,328)	(40,167)	(32,311)	(32,250)	(32,119)	(32,147)	(30,627)
	13	14	15	16	17	18	19
DAM NYCA	404,307	408,716	390,658	370,011	368,054	329,188	362,290
DAM NON-NYCA	67,916	59,572	67,332	68,479	73,656	81,186	67,842
DAM WHEELS	5,574	6,583	25	100	0	0	300
DAM VIRTUAL	33,284	26,309	32,452	44,761	29,591	32,176	25,803
BALANCING NYCA	13,789	9,407	15,654	24,552	20,120	14,298	11,347
BALANCING NON-NYCA	5,787	(1,501)	(4,168)	113	3,303	(6,668)	(3,265)
BALANCING WHEELS	(4,371)	(5,023)	275	0	0	0	(300)
BALANCING VIRTUAL	(33,284)	(26,309)	(32,452)	(44,761)	(29,591)	(32,176)	(25,803)
	20	21	22	23	24	25	26
DAM NYCA	408,164	412,557	395,213	319,831	348,163	363,792	363,777
DAM NON-NYCA	83,101	72,547	72,710	83,026	93,272	82,678	82,770
DAM WHEELS	3,553	2,017	486	75	25	450	927
DAM VIRTUAL	28,298	35,385	29,644	28,810	29,158	25,476	28,731
BALANCING NYCA	(6,974)	26,787	12,366	19,550	21,488	13,208	14,760
BALANCING NON-NYCA	(1,108)	2,567	1,644	5,761	(6,206)	5,019	6,645
BALANCING WHEELS	(3,553)	(1,967)	(486)	(75)	(25)	(450)	(25)
BALANCING VIRTUAL	(28,298)	(35,385)	(29,644)	(28,810)	(29,158)	(25,476)	(28,731)
	27	28	29	30			
DAM NYCA	384,423	428,571	420,595	397,673			
DAM NON-NYCA	84,689	85,163	96,415	93,497			
DAM WHEELS	1,019	2,193	1,369	7,758			
DAM VIRTUAL	31,194	30,983	28,052	37,904			
BALANCING NYCA	21,964	10,007	14,740	15,746			
BALANCING NON-NYCA	5,030	8,510	16,461	20,096			
BALANCING WHEELS	(57)	(208)	225	(1,068)			
BALANCING VIRTUAL	(31,194)	(30,983)	(28,052)	(37,904)			



**SETTLEMENTS REPORT**  
 November 2023 Settlement Adjustment  
 December 7, 2023

**Initial Settlement Adjustment – Market Supply Analysis**

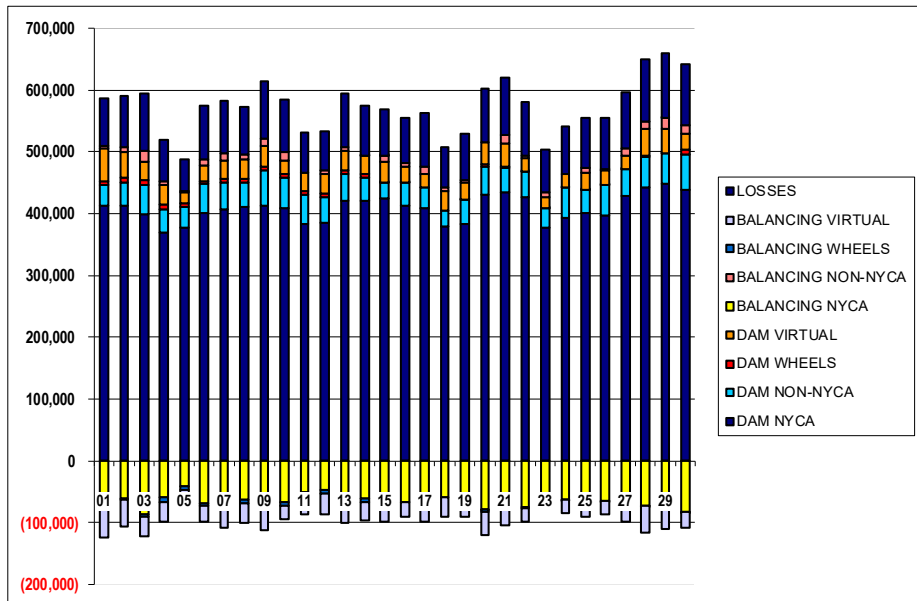
	MONDAY	TUESDAY	WEDNESDAY	THURSDAY	FRIDAY	SATURDAY	SUNDAY
			1	2	3	4	5
DAM NYCA			384,184	381,690	359,377	331,417	351,901
DAM NON-NYCA			98,942	85,909	87,647	80,512	63,096
DAM WHEELS			6,024	6,408	6,408	6,408	6,975
DAM VIRTUAL			25,319	33,467	38,637	33,312	17,792
BALANCING NYCA			(1,348)	15,810	33,117	19,337	6,724
BALANCING NON-NYCA			(12,464)	(2,766)	741	(2,610)	1,759
BALANCING WHEELS			(391)	(2,236)	(4,829)	(6,408)	(6,139)
BALANCING VIRTUAL			(25,319)	(33,467)	(38,637)	(33,312)	(17,792)
	6	7	8	9	10	11	12
DAM NYCA	375,640	385,212	386,130	401,307	381,582	371,895	370,450
DAM NON-NYCA	72,744	61,198	69,220	80,184	72,751	61,820	63,810
DAM WHEELS	5,562	6,543	6,808	5,692	6,408	6,408	6,433
DAM VIRTUAL	31,328	40,167	32,311	32,250	32,119	32,147	30,627
BALANCING NYCA	19,946	22,316	17,004	28,167	26,867	7,764	11,216
BALANCING NON-NYCA	6,407	4,914	(620)	(7,583)	6,371	2,142	1,600
BALANCING WHEELS	(4,455)	(5,275)	(6,187)	(5,605)	(4,657)	(5,280)	(4,943)
BALANCING VIRTUAL	(31,328)	(40,167)	(32,311)	(32,250)	(32,119)	(32,147)	(30,627)
	13	14	15	16	17	18	19
DAM NYCA	404,307	408,716	390,658	370,011	368,054	329,188	362,290
DAM NON-NYCA	67,916	59,572	67,332	68,479	73,658	81,186	67,842
DAM WHEELS	5,574	6,583	25	100	0	0	300
DAM VIRTUAL	33,284	26,309	32,452	44,761	29,591	32,176	25,803
BALANCING NYCA	13,789	9,407	15,119	23,856	18,257	14,549	11,615
BALANCING NON-NYCA	5,787	(1,501)	(4,168)	777	3,303	(6,668)	(3,265)
BALANCING WHEELS	(4,371)	(5,023)	275	0	0	0	(300)
BALANCING VIRTUAL	(33,284)	(26,309)	(32,452)	(44,761)	(29,591)	(32,176)	(25,803)
	20	21	22	23	24	25	26
DAM NYCA	408,164	412,557	395,213	319,831	348,163	363,792	363,777
DAM NON-NYCA	83,101	72,547	72,710	83,026	93,272	82,678	82,770
DAM WHEELS	3,553	2,017	486	75	25	450	927
DAM VIRTUAL	28,298	35,385	29,644	28,810	29,158	25,476	28,731
BALANCING NYCA	(6,718)	27,130	12,716	19,904	21,855	13,208	14,760
BALANCING NON-NYCA	(1,108)	2,567	1,644	5,761	(6,205)	5,019	6,645
BALANCING WHEELS	(3,553)	(1,967)	(486)	(75)	(25)	(450)	(25)
BALANCING VIRTUAL	(28,298)	(35,385)	(29,644)	(28,810)	(29,158)	(25,476)	(28,731)
	27	28	29	30			
DAM NYCA	384,423	428,571	420,595	397,673			
DAM NON-NYCA	84,689	85,163	96,415	93,497			
DAM WHEELS	1,019	2,193	1,369	7,758			
DAM VIRTUAL	31,194	30,983	28,052	37,904			
BALANCING NYCA	21,964	10,007	14,740	15,746			
BALANCING NON-NYCA	5,030	8,510	16,461	20,096			
BALANCING WHEELS	(57)	(208)	225	(1,068)			
BALANCING VIRTUAL	(31,194)	(30,983)	(28,052)	(37,904)			



SETTLEMENTS REPORT  
November 2023 Settlement Adjustment  
December 7, 2023

**Weekly Settlement – Market Withdrawals Analysis**

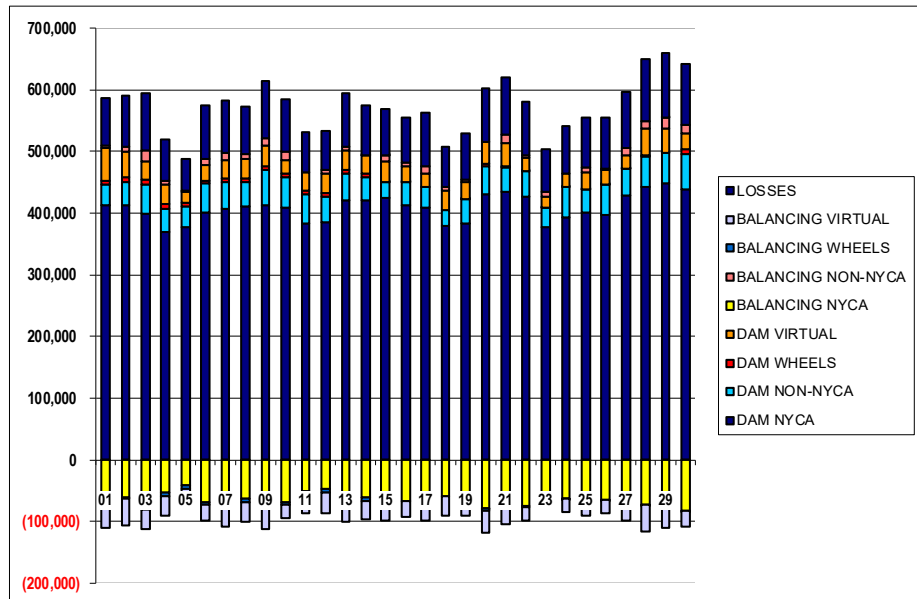
	MONDAY	TUESDAY	WEDNESDAY	THURSDAY	FRIDAY	SATURDAY	SUNDAY
			1	2	3	4	5
DAM NYCA			412,404	413,152	399,801	369,591	378,027
DAM NON-NYCA			33,005	37,845	47,121	37,781	32,581
DAM WHEELS			6,024	6,408	6,408	6,408	6,975
DAM VIRTUAL			54,165	41,721	31,202	31,731	17,142
BALANCING NYCA			(68,854)	(61,184)	(85,840)	(59,400)	(40,316)
BALANCING NON-NYCA			4,513	9,061	16,634	5,757	1,198
BALANCING WHEELS			(391)	(2,236)	(4,829)	(6,408)	(6,139)
BALANCING VIRTUAL			(54,165)	(41,721)	(31,202)	(31,731)	(17,142)
UFELOSSES			75,419	81,664	92,767	67,622	51,989
	6	7	8	9	10	11	12
DAM NYCA	401,727	407,486	411,220	413,303	408,920	382,434	384,824
DAM NON-NYCA	45,654	42,372	38,670	56,465	48,713	47,997	40,799
DAM WHEELS	5,562	6,543	6,808	5,692	6,408	6,408	6,433
DAM VIRTUAL	25,534	29,327	30,479	34,499	21,717	29,705	32,671
BALANCING NYCA	(67,844)	(73,243)	(62,522)	(72,196)	(67,486)	(50,502)	(47,723)
BALANCING NON-NYCA	9,234	12,734	9,182	11,914	14,118	(694)	5,090
BALANCING WHEELS	(4,455)	(5,275)	(6,187)	(5,605)	(4,657)	(5,280)	(4,943)
BALANCING VIRTUAL	(25,534)	(29,327)	(30,479)	(34,499)	(21,717)	(29,705)	(32,671)
UFELOSSES	85,967	84,290	75,185	92,835	83,888	64,386	64,085
	13	14	15	16	17	18	19
DAM NYCA	420,350	420,134	424,030	412,949	408,853	380,150	383,227
DAM NON-NYCA	43,267	37,168	26,264	37,783	32,837	24,791	39,187
DAM WHEELS	5,574	6,583	25	100	0	0	300
DAM VIRTUAL	32,995	29,616	32,726	25,184	22,618	31,050	27,081
BALANCING NYCA	(62,944)	(61,158)	(65,820)	(65,606)	(74,541)	(59,104)	(63,469)
BALANCING NON-NYCA	4,392	503	10,319	5,066	12,248	5,844	3,428
BALANCING WHEELS	(4,371)	(5,023)	275	0	0	0	(300)
BALANCING VIRTUAL	(32,995)	(29,616)	(32,726)	(25,184)	(22,618)	(31,050)	(27,081)
UFELOSSES	86,734	79,548	74,684	72,964	85,738	66,323	75,841
	20	21	22	23	24	25	26
DAM NYCA	429,663	434,979	426,640	377,686	393,059	401,312	396,186
DAM NON-NYCA	45,591	38,318	40,808	30,676	49,911	36,356	49,953
DAM WHEELS	3,553	2,017	486	75	25	450	927
DAM VIRTUAL	36,773	38,831	22,668	18,028	21,719	27,665	22,777
BALANCING NYCA	(78,351)	(63,640)	(75,354)	(57,305)	(62,055)	(61,300)	(63,977)
BALANCING NON-NYCA	(159)	13,122	3,845	8,426	(1,266)	8,839	2,822
BALANCING WHEELS	(3,553)	(1,967)	(486)	(75)	(25)	(450)	(927)
BALANCING VIRTUAL	(36,773)	(38,831)	(22,668)	(18,028)	(21,719)	(27,665)	(22,777)
UFELOSSES	86,439	91,678	85,994	68,685	77,067	79,490	82,967
	27	28	29	30			
DAM NYCA	428,352	441,781	448,894	438,810			
DAM NON-NYCA	43,479	49,961	48,147	56,737			
DAM WHEELS	1,019	2,193	1,369	7,758			
DAM VIRTUAL	21,320	42,899	38,508	25,461			
BALANCING NYCA	(77,373)	(72,402)	(71,650)	(81,374)			
BALANCING NON-NYCA	10,525	11,228	16,934	14,752			
BALANCING WHEELS	(57)	(208)	225	(1,068)			
BALANCING VIRTUAL	(21,320)	(42,899)	(38,508)	(25,461)			
UFELOSSES	91,123	101,683	105,886	98,086			



**SETTLEMENTS REPORT**  
**November 2023 Settlement Adjustment**  
**December 7, 2023**

**Initial Settlement Adjustment – Market Withdrawals Analysis**

	MONDAY	TUESDAY	WEDNESDAY	THURSDAY	FRIDAY	SATURDAY	SUNDAY
			1	2	3	4	5
DAM NYCA			412,404	413,152	399,801	369,591	378,027
DAM NON-NYCA			33,005	37,845	47,121	37,781	32,581
DAM WHEELS			6,024	6,408	6,408	6,408	6,975
DAM VIRTUAL			54,165	41,721	31,202	31,731	17,142
BALANCING NYCA			(56,019)	(61,089)	(75,527)	(51,771)	(40,316)
BALANCING NON-NYCA			4,513	9,061	16,634	5,757	1,198
BALANCING WHEELS			(391)	(2,236)	(4,829)	(6,408)	(6,139)
BALANCING VIRTUAL			(54,165)	(41,721)	(31,202)	(31,731)	(17,142)
UFELOSSES			75,411	81,673	92,852	67,298	51,989
	6	7	8	9	10	11	12
DAM NYCA	401,727	407,486	411,220	413,303	408,920	382,434	384,824
DAM NON-NYCA	45,654	42,372	38,670	56,465	48,713	47,997	40,799
DAM WHEELS	5,562	6,543	6,808	5,692	6,408	6,408	6,433
DAM VIRTUAL	25,534	29,327	30,479	34,499	21,717	29,705	32,671
BALANCING NYCA	(67,850)	(73,242)	(62,522)	(72,443)	(68,079)	(50,502)	(47,723)
BALANCING NON-NYCA	9,234	12,734	9,182	11,914	14,118	(694)	5,090
BALANCING WHEELS	(4,455)	(5,275)	(6,187)	(5,605)	(4,657)	(5,280)	(4,943)
BALANCING VIRTUAL	(25,534)	(29,327)	(30,479)	(34,499)	(21,717)	(29,705)	(32,671)
UFELOSSES	85,973	84,289	75,185	92,836	83,900	64,386	64,085
	13	14	15	16	17	18	19
DAM NYCA	420,350	420,134	424,030	412,949	408,853	380,150	383,227
DAM NON-NYCA	43,267	37,168	26,264	37,783	32,837	24,791	39,187
DAM WHEELS	5,574	6,583	25	100	0	0	300
DAM VIRTUAL	32,995	29,616	32,726	25,184	22,618	31,050	27,081
BALANCING NYCA	(62,944)	(61,151)	(66,355)	(66,938)	(76,418)	(58,853)	(63,207)
BALANCING NON-NYCA	4,392	503	10,319	5,584	12,248	5,844	3,428
BALANCING WHEELS	(4,371)	(5,023)	275	0	0	0	(300)
BALANCING VIRTUAL	(32,995)	(29,616)	(32,726)	(25,184)	(22,618)	(31,050)	(27,081)
UFELOSSES	86,734	79,542	74,684	73,745	85,752	66,323	75,847
	20	21	22	23	24	25	26
DAM NYCA	429,663	434,979	426,640	377,686	393,059	401,312	396,186
DAM NON-NYCA	45,591	38,318	40,808	30,676	49,911	36,356	49,953
DAM WHEELS	3,553	2,017	486	75	25	450	927
DAM VIRTUAL	36,773	38,831	22,668	18,028	21,719	27,665	22,777
BALANCING NYCA	(78,095)	(63,297)	(74,983)	(56,968)	(61,695)	(61,300)	(63,977)
BALANCING NON-NYCA	(159)	13,122	3,845	8,426	(1,266)	8,839	2,822
BALANCING WHEELS	(3,553)	(1,967)	(486)	(75)	(25)	(450)	(25)
BALANCING VIRTUAL	(36,773)	(38,831)	(22,668)	(18,028)	(21,719)	(27,665)	(22,777)
UFELOSSES	86,439	91,678	85,973	68,702	77,075	79,490	82,967
	27	28	29	30			
DAM NYCA	428,352	441,781	448,894	438,810			
DAM NON-NYCA	43,479	49,961	48,147	56,737			
DAM WHEELS	1,019	2,193	1,369	7,758			
DAM VIRTUAL	21,320	42,899	38,508	25,461			
BALANCING NYCA	(77,373)	(72,402)	(71,650)	(81,374)			
BALANCING NON-NYCA	10,525	11,228	16,934	14,752			
BALANCING WHEELS	(57)	(208)	225	(1,068)			
BALANCING VIRTUAL	(21,320)	(42,899)	(38,508)	(25,461)			
UFELOSSES	91,123	101,683	105,886	98,086			

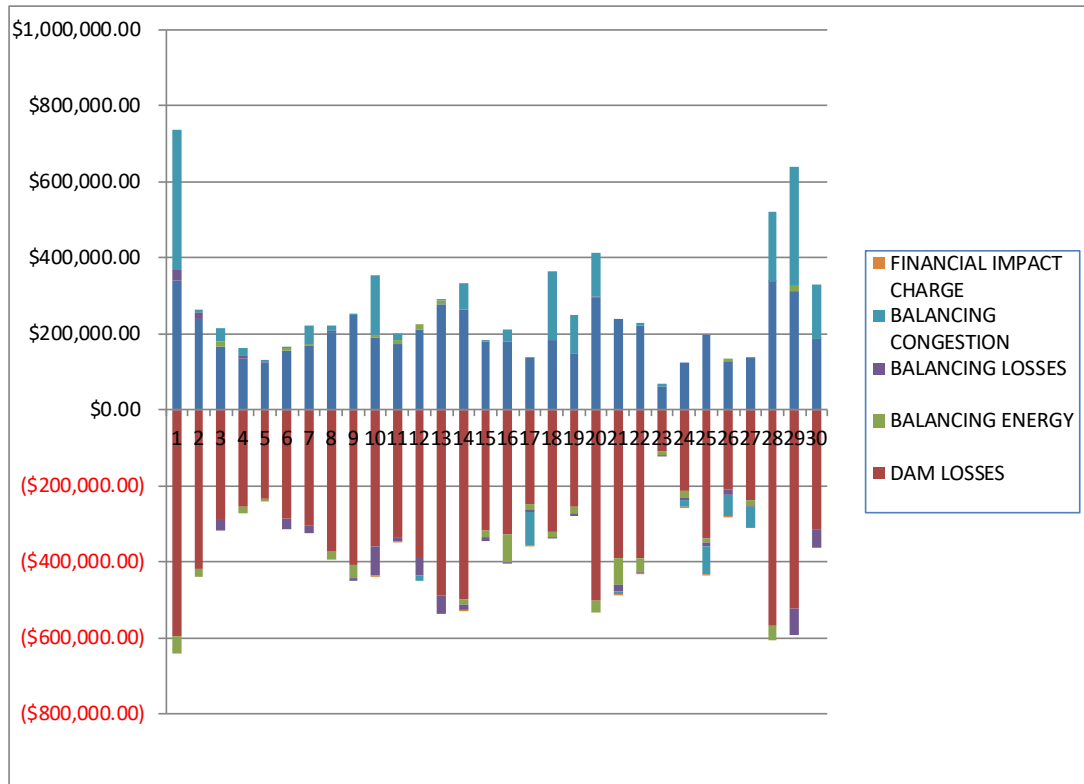




**SETTLEMENTS REPORT**  
**November 2023 Settlement Adjustment**  
**December 7, 2023**

**Weekly Settlement – Market Residuals Analysis**

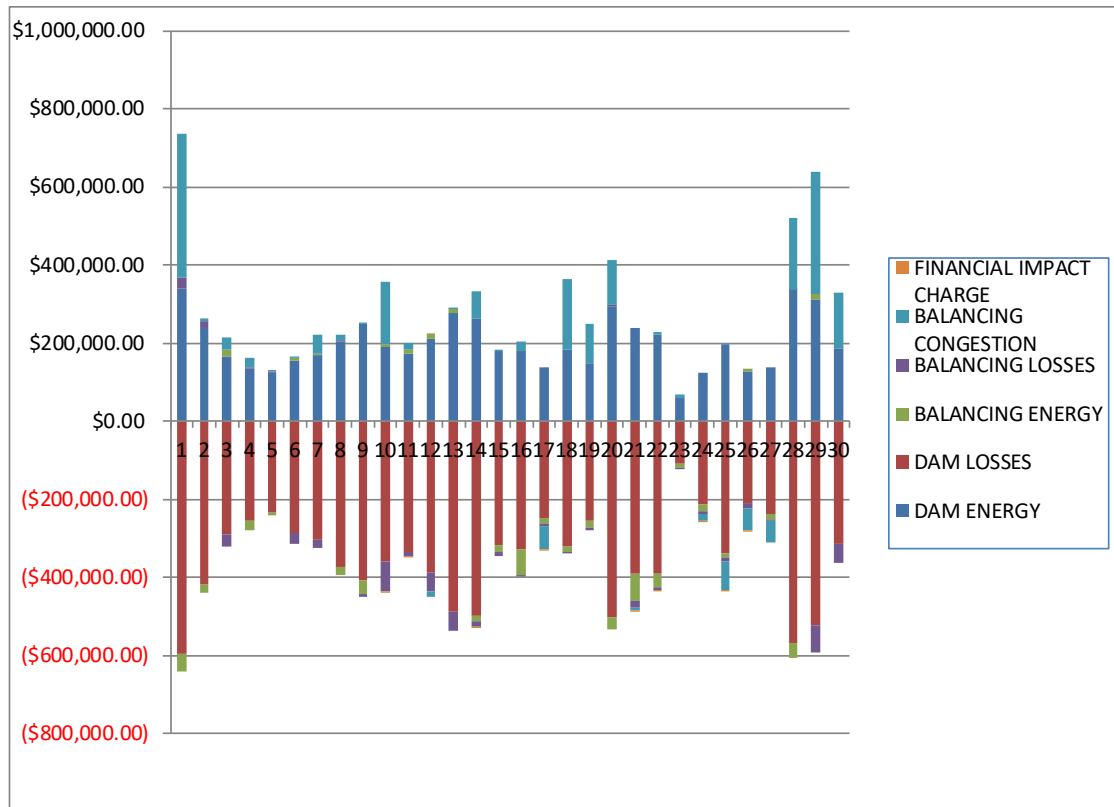
	MONDAY	TUESDAY	WEDNESDAY	THURSDAY	FRIDAY	SATURDAY	SUNDAY
			1	2	3	4	5
DAM ENERGY			\$338,801.22	\$239,192.24	\$166,372.04	\$133,886.02	\$124,344.64
DAM LOSSES			(\$595,365.15)	(\$418,900.23)	(\$291,004.63)	(\$253,938.65)	(\$235,986.05)
BALANCING ENERGY			(\$45,610.53)	(\$20,009.27)	\$13,126.47	(\$18,439.40)	(\$4,151.69)
BALANCING LOSSES			\$29,755.78	\$17,121.86	(\$28,314.42)	\$5,697.67	\$1,796.57
BALANCING CONGESTION			\$368,302.18	\$5,899.47	\$33,124.61	\$22,619.71	\$2,636.73
FINANCIAL IMPACT CHARGE			\$0.00	\$0.00	\$0.00	\$0.00	\$0.00
	6	7	8	9	10	11	12
DAM ENERGY	\$156,192.08	\$168,346.15	\$204,382.95	\$248,227.34	\$189,101.27	\$171,759.00	\$209,115.89
DAM LOSSES	(\$286,890.42)	(\$305,002.69)	(\$372,834.39)	(\$407,142.04)	(\$358,311.15)	(\$335,762.55)	(\$388,107.88)
BALANCING ENERGY	\$5,353.51	\$2,503.91	(\$20,343.20)	(\$37,036.03)	\$8,502.82	\$9,830.28	\$15,110.06
BALANCING LOSSES	(\$27,424.83)	(\$20,671.17)	\$3,244.39	(\$5,484.49)	(\$77,831.45)	(\$9,315.60)	(\$47,111.51)
BALANCING CONGESTION	\$4,754.06	\$50,207.93	\$13,058.19	\$4,530.21	\$156,589.78	\$18,580.48	(\$14,655.14)
FINANCIAL IMPACT CHARGE	\$0.00	\$0.00	\$0.00	\$0.00	(\$1,021.27)	(\$204.15)	\$0.00
	13	14	15	16	17	18	19
DAM ENERGY	\$277,485.59	\$262,623.40	\$178,677.18	\$178,391.76	\$138,345.61	\$184,222.59	\$149,564.20
DAM LOSSES	(\$489,363.83)	(\$498,691.48)	(\$316,440.53)	(\$330,194.39)	(\$248,549.71)	(\$320,759.29)	(\$256,319.04)
BALANCING ENERGY	\$9,261.86	(\$14,282.15)	(\$18,752.25)	(\$69,790.35)	(\$14,618.25)	(\$14,739.52)	(\$17,509.40)
BALANCING LOSSES	(\$46,929.01)	(\$12,915.37)	(\$9,300.72)	(\$5,745.54)	(\$5,221.32)	(\$3,094.87)	(\$6,169.58)
BALANCING CONGESTION	\$2,016.45	\$70,479.05	\$2,199.31	\$32,677.88	(\$86,643.60)	\$177,936.73	\$99,467.98
FINANCIAL IMPACT CHARGE	\$0.00	(\$773.88)	\$0.00	\$0.00	(\$55.99)	\$0.00	\$0.00
	20	21	22	23	24	25	26
DAM ENERGY	\$292,569.09	\$236,686.80	\$221,954.00	\$62,658.73	\$125,141.02	\$195,094.70	\$128,758.28
DAM LOSSES	(\$501,732.04)	(\$390,972.20)	(\$390,212.87)	(\$109,203.91)	(\$213,206.65)	(\$339,139.81)	(\$210,470.95)
BALANCING ENERGY	(\$33,019.90)	(\$71,022.30)	(\$35,453.43)	(\$10,911.06)	(\$18,382.92)	(\$9,395.13)	\$5,975.75
BALANCING LOSSES	\$6,597.10	(\$15,823.38)	(\$5,080.67)	(\$3,920.82)	(\$5,639.76)	(\$11,117.45)	(\$14,254.20)
BALANCING CONGESTION	\$113,363.70	(\$7,774.80)	\$5,956.74	\$6,029.19	(\$19,571.69)	(\$72,654.22)	(\$53,411.22)
FINANCIAL IMPACT CHARGE	\$0.00	(\$87.47)	(\$54.75)	\$0.00	(\$560.39)	(\$2.80)	(\$3,993.15)
	27	28	29	30			
DAM ENERGY	\$137,118.37	\$334,428.84	\$311,880.15	\$184,530.71			
DAM LOSSES	(\$237,301.27)	(\$568,991.60)	(\$524,920.57)	(\$313,655.62)			
BALANCING ENERGY	(\$15,268.95)	(\$36,676.93)	\$13,630.10	\$1,829.63			
BALANCING LOSSES	(\$4,157.03)	\$1,524.13	(\$66,895.64)	(\$48,035.23)			
BALANCING CONGESTION	(\$54,426.99)	\$184,157.62	\$312,561.37	\$142,128.40			
FINANCIAL IMPACT CHARGE	\$0.00	\$0.00	\$0.00	\$0.00			



**SETTLEMENTS REPORT**  
**November 2023 Settlement Adjustment**  
**December 7, 2023**

**Initial Settlement Adjustment – Market Residuals Analysis**

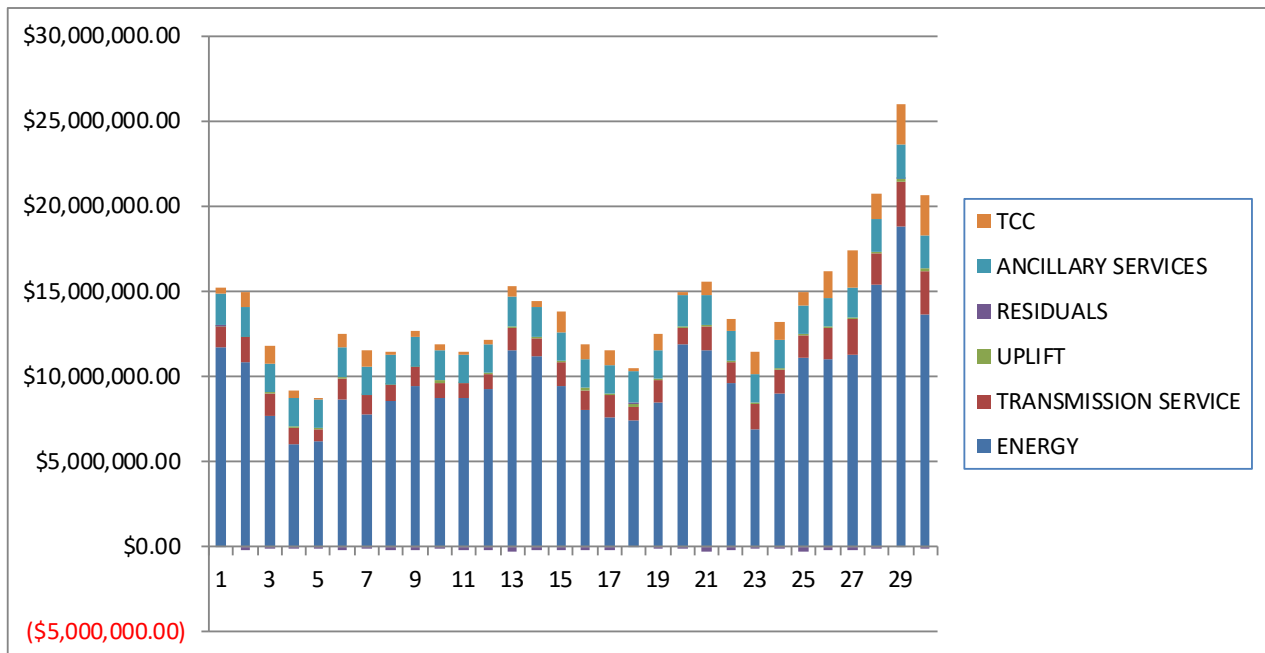
	MONDAY	TUESDAY	WEDNESDAY	THURSDAY	FRIDAY	SATURDAY	SUNDAY
			1	2	3	4	5
DAM ENERGY			\$338,801.23	\$239,192.24	\$166,372.04	\$133,886.02	\$124,344.64
DAM LOSSES			(\$595,365.15)	(\$418,900.23)	(\$291,004.63)	(\$253,938.65)	(\$235,986.05)
BALANCING ENERGY			(\$45,966.43)	(\$19,733.33)	\$15,110.39	(\$24,838.35)	(\$4,146.90)
BALANCING LOSSES			\$28,521.55	\$17,496.81	(\$29,530.81)	\$3,742.29	\$1,789.76
BALANCING CONGESTION			\$368,448.13	\$5,943.10	\$32,963.15	\$22,567.49	\$2,636.73
FINANCIAL IMPACT CHARGE			\$0.00	\$0.00	\$0.00	\$0.00	\$0.00
	6	7	8	9	10	11	12
DAM ENERGY	\$156,192.09	\$168,346.15	\$204,382.95	\$248,227.35	\$189,101.27	\$171,759.00	\$209,115.89
DAM LOSSES	(\$286,890.42)	(\$305,002.69)	(\$372,834.39)	(\$407,142.04)	(\$358,311.15)	(\$335,762.55)	(\$388,107.88)
BALANCING ENERGY	\$5,567.16	\$2,470.90	(\$20,344.56)	(\$36,963.22)	\$9,107.48	\$9,830.28	\$15,110.06
BALANCING LOSSES	(\$27,440.22)	(\$20,611.49)	\$3,300.95	(\$5,353.34)	(\$76,747.03)	(\$9,315.60)	(\$47,111.51)
BALANCING CONGESTION	\$4,735.01	\$50,209.63	\$13,061.02	\$4,554.24	\$156,951.15	\$18,580.48	(\$14,655.14)
FINANCIAL IMPACT CHARGE	\$0.00	\$0.00	\$0.00	\$0.00	(\$1,021.15)	(\$204.15)	\$0.00
	13	14	15	16	17	18	19
DAM ENERGY	\$277,485.59	\$262,623.40	\$178,677.17	\$178,391.76	\$138,345.61	\$184,222.59	\$149,564.20
DAM LOSSES	(\$489,363.83)	(\$498,691.48)	(\$316,440.54)	(\$330,194.38)	(\$248,549.71)	(\$320,759.29)	(\$256,319.04)
BALANCING ENERGY	\$9,261.86	(\$14,480.44)	(\$18,764.69)	(\$64,279.23)	(\$14,506.14)	(\$14,738.42)	(\$17,386.37)
BALANCING LOSSES	(\$46,929.01)	(\$12,924.27)	(\$9,215.96)	(\$5,225.18)	(\$5,815.66)	(\$3,133.52)	(\$6,219.80)
BALANCING CONGESTION	\$2,016.45	\$70,479.20	\$4,052.38	\$24,785.24	(\$61,425.74)	\$177,853.77	\$99,460.93
FINANCIAL IMPACT CHARGE	\$0.00	(\$773.86)	\$0.00	\$0.00	(\$55.98)	\$0.00	\$0.00
	20	21	22	23	24	25	26
DAM ENERGY	\$292,569.09	\$236,686.80	\$221,954.00	\$62,658.73	\$125,141.02	\$195,094.70	\$128,758.28
DAM LOSSES	(\$501,732.04)	(\$390,972.20)	(\$390,212.88)	(\$109,203.91)	(\$213,206.65)	(\$339,139.81)	(\$210,470.95)
BALANCING ENERGY	(\$33,021.62)	(\$71,015.73)	(\$36,018.08)	(\$10,727.70)	(\$18,504.93)	(\$9,395.13)	\$5,975.75
BALANCING LOSSES	\$6,506.80	(\$15,868.18)	(\$5,194.83)	(\$3,934.91)	(\$5,756.90)	(\$11,117.45)	(\$14,254.20)
BALANCING CONGESTION	\$113,381.70	(\$7,759.87)	\$5,980.29	\$6,350.35	(\$19,389.97)	(\$72,654.22)	(\$53,411.22)
FINANCIAL IMPACT CHARGE	\$0.00	(\$87.49)	(\$54.74)	\$0.00	(\$560.42)	(\$2.80)	(\$3,993.15)
	27	28	29	30			
DAM ENERGY	\$137,118.37	\$334,428.84	\$311,880.15	\$184,530.71			
DAM LOSSES	(\$237,301.27)	(\$568,991.60)	(\$524,920.57)	(\$313,655.62)			
BALANCING ENERGY	(\$15,268.95)	(\$36,676.93)	\$13,630.10	\$1,829.63			
BALANCING LOSSES	(\$4,157.03)	\$1,524.13	(\$66,895.64)	(\$48,035.23)			
BALANCING CONGESTION	(\$54,426.99)	\$184,157.62	\$312,561.37	\$142,128.40			
FINANCIAL IMPACT CHARGE	\$0.00	\$0.00	\$0.00	\$0.00			



**SETTLEMENTS REPORT**  
 November 2023 Settlement Adjustment  
 December 7, 2023

**Weekly Settlement – Market Costs Analysis**

	MONDAY	TUESDAY	WEDNESDAY	THURSDAY	FRIDAY	SATURDAY	SUNDAY
			1	2	3	4	5
ENERGY			\$11,748,174.78	\$10,817,773.04	\$7,728,792.61	\$6,062,267.80	\$6,200,993.49
TRANSMISSION SERVICE			\$1,200,880.66	\$1,474,215.92	\$1,247,902.71	\$897,236.81	\$702,051.29
UPLIFT			\$17,854.04	\$23,402.23	\$114,640.30	\$154,706.01	\$82,559.61
RESIDUALS			\$95,883.50	(\$176,695.93)	(\$106,695.93)	(\$110,174.65)	(\$111,359.80)
ANCILLARY SERVICES			\$1,774,122.30	\$1,780,392.07	\$1,659,931.10	\$1,612,269.52	\$1,623,478.68
TCC			\$334,083.10	\$831,488.17	\$1,060,132.39	\$413,429.08	\$32,884.36
	6	7	8	9	10	11	12
ENERGY	\$8,640,743.96	\$7,765,602.55	\$8,599,147.41	\$9,425,745.26	\$8,710,272.20	\$8,776,385.44	\$9,235,245.60
TRANSMISSION SERVICE	\$1,246,287.36	\$1,137,507.10	\$917,168.23	\$1,133,423.88	\$896,955.69	\$838,060.10	\$923,763.62
UPLIFT	\$67,510.97	\$28,541.54	\$20,590.62	\$8,486.67	\$219,709.02	\$4,074.75	\$41,178.01
RESIDUALS	(\$148,015.60)	(\$104,615.87)	(\$172,492.06)	(\$196,905.01)	(\$82,970.00)	(\$145,112.54)	(\$225,648.58)
ANCILLARY SERVICES	\$1,727,329.62	\$1,677,818.40	\$1,704,042.15	\$1,729,695.80	\$1,686,549.36	\$1,655,751.06	\$1,684,270.79
TCC	\$787,327.55	\$968,859.82	\$197,797.82	\$383,520.53	\$365,741.69	\$191,010.29	\$277,691.06
	13	14	15	16	17	18	19
ENERGY	\$11,540,238.93	\$11,158,351.25	\$9,439,101.08	\$7,997,193.67	\$7,604,720.05	\$7,404,680.43	\$8,431,508.01
TRANSMISSION SERVICE	\$1,312,605.69	\$1,101,066.14	\$1,382,897.57	\$1,190,243.72	\$1,296,035.67	\$848,454.96	\$1,333,853.73
UPLIFT	\$82,761.10	\$38,462.69	\$60,639.62	\$171,094.31	\$59,431.87	\$165,994.27	\$131,878.49
RESIDUALS	(\$247,528.94)	(\$193,560.43)	(\$163,617.01)	(\$194,660.64)	(\$216,743.26)	\$23,565.64	(\$30,965.84)
ANCILLARY SERVICES	\$1,757,927.89	\$1,769,283.18	\$1,679,718.50	\$1,637,162.33	\$1,661,462.42	\$1,859,268.15	\$1,625,488.15
TCC	\$611,390.21	\$320,174.50	\$1,226,065.16	\$882,200.31	\$952,313.66	\$167,105.02	\$1,013,322.89
	20	21	22	23	24	25	26
ENERGY	\$11,859,890.84	\$11,498,110.12	\$9,576,035.96	\$6,896,997.29	\$8,974,994.46	\$11,134,582.28	\$11,055,648.51
TRANSMISSION SERVICE	\$1,007,594.40	\$1,468,922.26	\$1,294,592.85	\$1,499,034.68	\$1,402,277.02	\$1,282,143.53	\$1,780,641.18
UPLIFT	\$103,956.96	\$44,018.06	\$63,504.38	\$37,922.42	\$79,333.08	\$60,709.01	\$59,604.71
RESIDUALS	(\$122,222.05)	(\$248,993.35)	(\$202,890.98)	(\$55,347.87)	(\$132,220.39)	(\$237,214.71)	(\$147,395.49)
ANCILLARY SERVICES	\$1,791,403.92	\$1,781,428.55	\$1,708,318.18	\$1,660,151.39	\$1,663,825.05	\$1,694,206.82	\$1,723,411.19
TCC	\$195,435.98	\$790,421.40	\$708,324.62	\$1,318,517.11	\$1,069,568.76	\$757,225.62	\$1,597,540.28
	27	28	29	30			
ENERGY	\$11,252,560.45	\$15,374,148.03	\$18,821,112.12	\$13,628,902.27			
TRANSMISSION SERVICE	\$2,141,677.55	\$1,830,096.66	\$2,590,165.36	\$2,530,482.29			
UPLIFT	\$69,300.54	\$96,499.33	\$173,743.83	\$214,986.80			
RESIDUALS	(\$174,035.87)	(\$85,557.94)	\$46,255.41	(\$33,202.11)			
ANCILLARY SERVICES	\$1,777,513.99	\$1,906,119.51	\$1,953,471.00	\$1,876,930.65			
TCC	\$2,178,765.05	\$1,559,823.93	\$2,389,975.10	\$2,382,491.26			



SETTLEMENTS REPORT  
November 2023 Settlement Adjustment  
December 7, 2023

**Initial Settlement Adjustment – Market Costs Analysis**

	MONDAY	TUESDAY	WEDNESDAY	THURSDAY	FRIDAY	SATURDAY	SUNDAY
			1	2	3	4	5
ENERGY			\$12,139,542.35	\$10,820,024.82	\$8,018,259.12	\$6,276,055.53	\$6,200,993.54
TRANSMISSION SERVICE			\$1,220,005.14	\$1,474,357.78	\$1,263,269.06	\$908,604.87	\$702,051.52
UPLIFT			\$17,929.10	\$23,402.23	\$114,728.11	\$154,706.02	\$82,559.61
RESIDUALS			\$94,439.33	(\$176,001.41)	(\$106,089.86)	(\$118,581.20)	(\$111,361.82)
ANCILLARY SERVICES			\$1,795,591.42	\$1,780,554.56	\$1,677,210.49	\$1,624,950.20	\$1,623,478.91
TCC			\$334,083.10	\$831,488.17	\$1,060,132.39	\$413,429.08	\$32,884.36
	6	7	8	9	10	11	12
ENERGY	\$8,640,564.68	\$7,765,574.34	\$8,599,089.40	\$9,418,330.78	\$8,685,120.99	\$8,776,385.44	\$9,235,245.60
TRANSMISSION SERVICE	\$1,246,278.77	\$1,137,508.57	\$917,168.49	\$1,133,055.60	\$896,071.39	\$838,060.10	\$923,763.62
UPLIFT	\$67,510.97	\$28,541.54	\$20,590.61	\$8,499.15	\$219,708.67	\$4,074.75	\$41,178.01
RESIDUALS	(\$147,836.38)	(\$104,587.50)	(\$172,434.03)	(\$196,677.01)	(\$80,919.43)	(\$145,112.54)	(\$225,648.58)
ANCILLARY SERVICES	\$1,727,319.94	\$1,677,819.71	\$1,704,042.38	\$1,729,282.18	\$1,685,558.80	\$1,655,751.06	\$1,684,270.79
TCC	\$787,327.55	\$968,859.82	\$197,797.82	\$383,520.53	\$365,741.69	\$191,010.29	\$277,691.06
	13	14	15	16	17	18	19
ENERGY	\$11,540,238.93	\$11,158,558.32	\$9,423,979.63	\$7,990,296.70	\$7,533,921.44	\$7,411,307.73	\$8,437,585.72
TRANSMISSION SERVICE	\$1,312,605.69	\$1,101,075.25	\$1,382,100.24	\$1,197,161.56	\$1,293,239.02	\$848,829.47	\$1,334,245.36
UPLIFT	\$82,761.10	\$38,462.70	\$61,886.01	\$172,701.22	\$59,840.69	\$165,994.26	\$131,878.49
RESIDUALS	(\$247,528.94)	(\$193,767.45)	(\$161,691.64)	(\$196,521.79)	(\$192,007.62)	\$23,445.13	(\$30,900.08)
ANCILLARY SERVICES	\$1,757,927.89	\$1,769,291.33	\$1,679,269.41	\$1,636,788.29	\$1,659,713.67	\$1,859,688.65	\$1,625,928.20
TCC	\$611,390.21	\$320,174.50	\$1,226,065.16	\$882,200.31	\$952,313.66	\$167,105.02	\$1,013,322.89
	20	21	22	23	24	25	26
ENERGY	\$11,866,828.57	\$11,509,511.66	\$9,586,359.42	\$6,903,503.90	\$8,985,443.99	\$11,134,582.28	\$11,055,648.51
TRANSMISSION SERVICE	\$1,007,975.47	\$1,469,432.90	\$1,295,145.35	\$1,499,536.52	\$1,402,813.54	\$1,282,143.53	\$1,780,641.18
UPLIFT	\$103,956.96	\$44,018.07	\$63,504.38	\$37,922.42	\$79,333.09	\$60,709.01	\$59,604.71
RESIDUALS	(\$122,296.07)	(\$249,016.67)	(\$203,546.24)	(\$54,857.44)	(\$132,277.85)	(\$237,214.71)	(\$147,395.49)
ANCILLARY SERVICES	\$1,791,831.77	\$1,782,001.92	\$1,708,931.48	\$1,660,721.22	\$1,664,430.07	\$1,694,206.82	\$1,723,411.19
TCC	\$195,435.98	\$790,421.40	\$708,324.62	\$1,318,517.11	\$1,069,568.76	\$757,225.62	\$1,597,540.28
	27	28	29	30			
ENERGY	\$11,252,560.45	\$15,374,148.03	\$18,821,112.12	\$13,628,902.27			
TRANSMISSION SERVICE	\$2,141,677.55	\$1,830,096.66	\$2,590,165.36	\$2,530,482.29			
UPLIFT	\$69,300.54	\$96,499.33	\$173,743.83	\$214,986.80			
RESIDUALS	(\$174,035.87)	(\$85,557.94)	\$46,255.41	(\$33,202.11)			
ANCILLARY SERVICES	\$1,777,513.99	\$1,906,119.51	\$1,953,471.00	\$1,876,930.65			
TCC	\$2,178,765.05	\$1,559,823.93	\$2,389,975.10	\$2,382,491.26			

