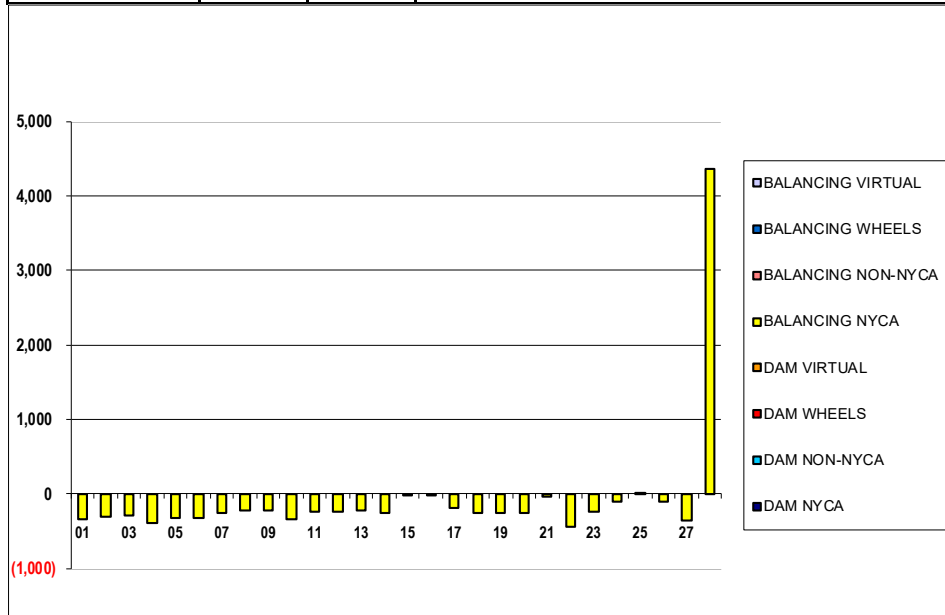


SETTLEMENTS REPORT
February 2023 Settlement Adjustment
July 10, 2023

Settlement Adjustment – Market Supply Delta Analysis

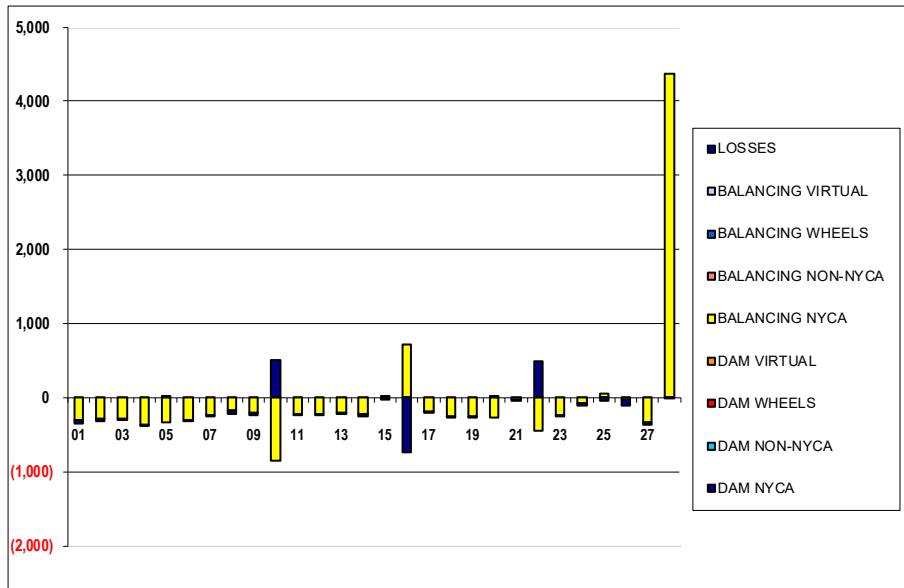
	MONDAY	TUESDAY	WEDNESDAY	THURSDAY	FRIDAY	SATURDAY	SUNDAY	
			1	2	3	4	5	
DAM NYCA			0	0	0	0	0	
DAM NON-NYCA			0	0	0	0	0	
DAM WHEELS			0	0	0	0	0	
DAM VIRTUAL			0	0	0	0	0	
BALANCING NYCA			(344)	(311)	(300)	(389)	(330)	
BALANCING NON-NYCA			0	0	0	0	0	
BALANCING WHEELS			0	0	0	0	0	
BALANCING VIRTUAL			0	0	0	0	0	
	6	7	8	9	10	11	12	
DAM NYCA	0	0	0	0	0	0	0	
DAM NON-NYCA	0	0	0	0	0	0	0	
DAM WHEELS	0	0	0	0	0	0	0	
DAM VIRTUAL	0	0	0	0	0	0	0	
BALANCING NYCA	(320)	(258)	(227)	(231)	(341)	(239)	(237)	
BALANCING NON-NYCA	0	0	0	0	0	0	0	
BALANCING WHEELS	0	0	0	0	0	0	0	
BALANCING VIRTUAL	0	0	0	0	0	0	0	
	13	14	15	16	17	18	19	
DAM NYCA	0	0	0	0	0	0	0	
DAM NON-NYCA	0	0	0	0	0	0	0	
DAM WHEELS	0	0	0	0	0	0	0	
DAM VIRTUAL	0	0	0	0	0	0	0	
BALANCING NYCA	(226)	(259)	(4)	(13)	(193)	(259)	(260)	
BALANCING NON-NYCA	0	0	0	0	0	0	0	
BALANCING WHEELS	0	0	0	0	0	0	0	
BALANCING VIRTUAL	0	0	0	0	0	0	0	
	20	21	22	23	24	25	26	
DAM NYCA	0	0	0	0	0	0	0	
DAM NON-NYCA	0	0	0	0	0	0	0	
DAM WHEELS	0	0	0	0	0	0	0	
DAM VIRTUAL	0	0	0	0	0	0	0	
BALANCING NYCA	(263)	(38)	(442)	(242)	(107)	13	(112)	
BALANCING NON-NYCA	0	0	0	0	0	0	0	
BALANCING WHEELS	0	0	0	0	0	0	0	
BALANCING VIRTUAL	0	0	0	0	0	0	0	
	27	28						
DAM NYCA	0	0						
DAM NON-NYCA	0	0						
DAM WHEELS	0	0						
DAM VIRTUAL	0	0						
BALANCING NYCA	(362)	4,362						
BALANCING NON-NYCA	0	0						
BALANCING WHEELS	0	0						
BALANCING VIRTUAL	0	0						



SETTLEMENTS REPORT
February 2023 Settlement Adjustment
July 10, 2023

Settlement Adjustment – Market Withdrawals Delta Analysis

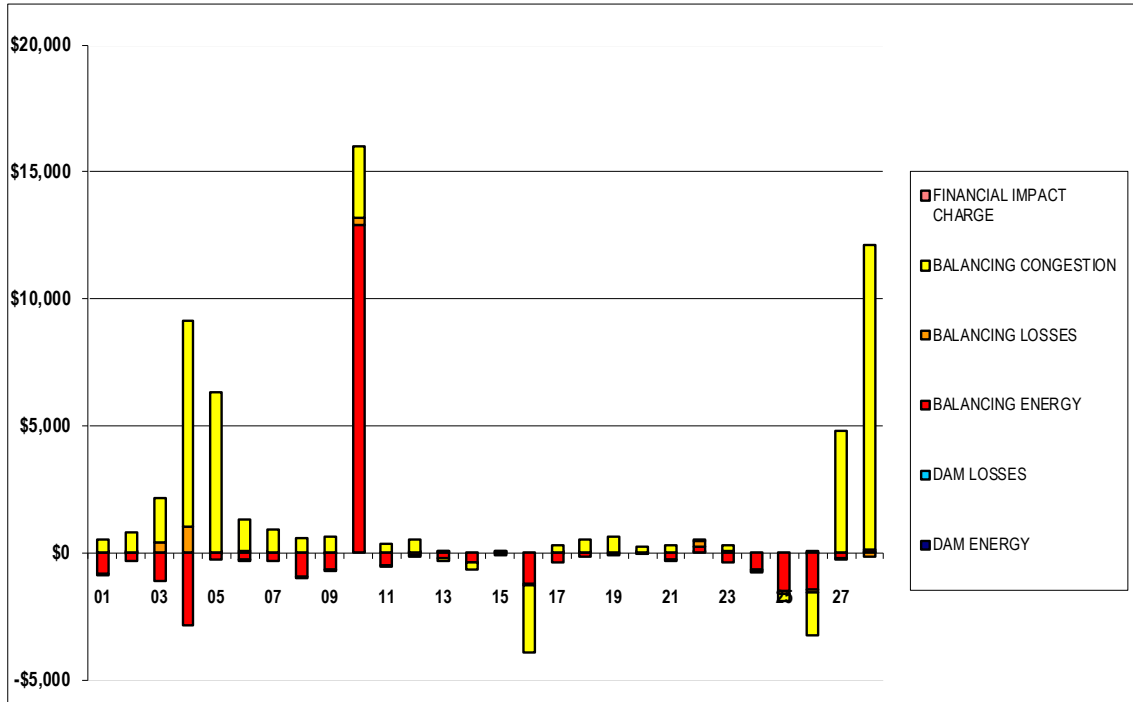
	MONDAY	TUESDAY	WEDNESDAY	THURSDAY	FRIDAY	SATURDAY	SUNDAY
			1	2	3	4	5
DAM NYCA			0	0	0	0	0
DAM NON-NYCA			0	0	0	0	0
DAM WHEELS			0	0	0	0	0
DAM VIRTUAL			0	0	0	0	0
BALANCING NYCA			(307)	(283)	(281)	(371)	(335)
BALANCING NON-NYCA			0	0	0	0	0
BALANCING WHEELS			0	0	0	0	0
BALANCING VIRTUAL			0	0	0	0	0
UFE/LOSSES			(36)	(28)	(19)	(18)	5
	6	7	8	9	10	11	12
DAM NYCA	0	0	0	0	0	0	0
DAM NON-NYCA	0	0	0	0	0	0	0
DAM WHEELS	0	0	0	0	0	0	0
DAM VIRTUAL	0	0	0	0	0	0	0
BALANCING NYCA	(307)	(244)	(177)	(202)	(845)	(214)	(229)
BALANCING NON-NYCA	0	0	0	0	0	0	0
BALANCING WHEELS	0	0	0	0	0	0	0
BALANCING VIRTUAL	0	0	0	0	0	0	0
UFE/LOSSES	(13)	(14)	(50)	(29)	503	(25)	(8)
	13	14	15	16	17	18	19
DAM NYCA	0	0	0	0	0	0	0
DAM NON-NYCA	0	0	0	0	0	0	0
DAM WHEELS	0	0	0	0	0	0	0
DAM VIRTUAL	0	0	0	0	0	0	0
BALANCING NYCA	(207)	(224)	17	720	(182)	(251)	(252)
BALANCING NON-NYCA	0	0	0	0	0	0	0
BALANCING WHEELS	0	0	0	0	0	0	0
BALANCING VIRTUAL	0	0	0	0	0	0	0
UFE/LOSSES	(19)	(35)	(21)	(733)	(11)	(8)	(7)
	20	21	22	23	24	25	26
DAM NYCA	0	0	0	0	0	0	0
DAM NON-NYCA	0	0	0	0	0	0	0
DAM WHEELS	0	0	0	0	0	0	0
DAM VIRTUAL	0	0	0	0	0	0	0
BALANCING NYCA	(267)	(26)	(452)	(232)	(74)	58	(35)
BALANCING NON-NYCA	0	0	0	0	0	0	0
BALANCING WHEELS	0	0	0	0	0	0	0
BALANCING VIRTUAL	0	0	0	0	0	0	0
UFE/LOSSES	4	(13)	493	(11)	(33)	(45)	(76)
	27	28					
DAM NYCA	0	0					
DAM NON-NYCA	0	0					
DAM WHEELS	0	0					
DAM VIRTUAL	0	0					
BALANCING NYCA	(341)	4,364					
BALANCING NON-NYCA	0	0					
BALANCING WHEELS	0	0					
BALANCING VIRTUAL	0	0					
UFE/LOSSES	(21)	(2)					



SETTLEMENTS REPORT
February 2023 Settlement Adjustment
July 10, 2023

Settlement Adjustment – Market Residuals Delta Analysis

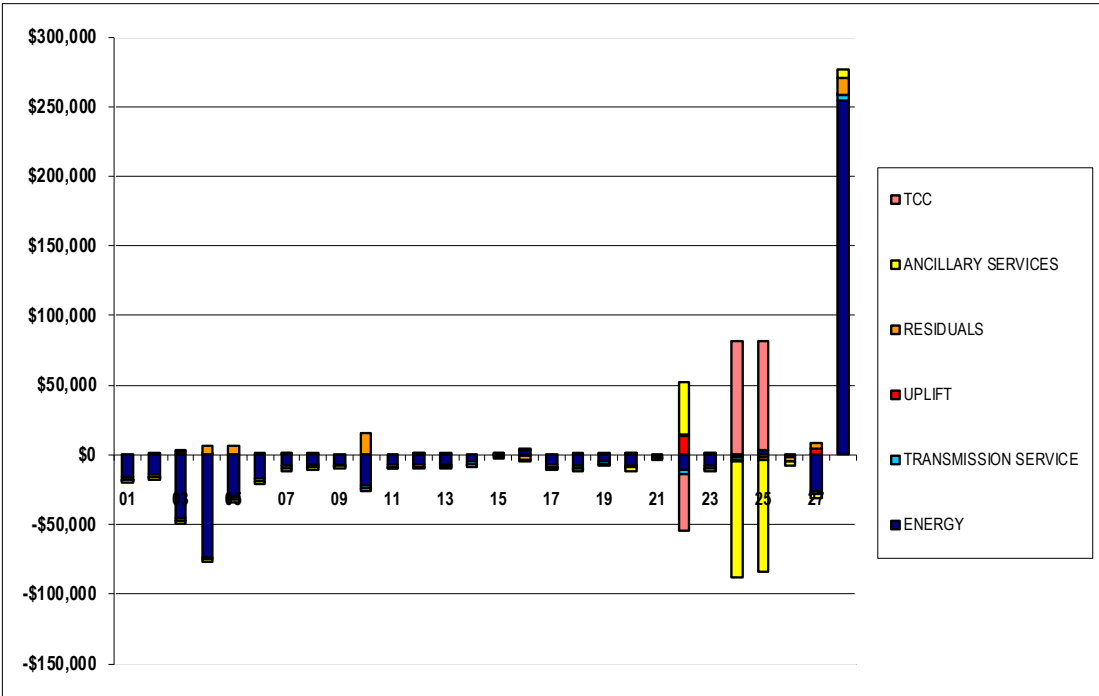
	MONDAY	TUESDAY	WEDNESDAY	THURSDAY	FRIDAY	SATURDAY	SUNDAY
			1	2	3	4	5
DAM ENERGY			\$0.00	(\$0.01)	\$0.00	\$0.00	\$0.00
DAM LOSSES			\$0.01	\$0.00	\$0.00	\$0.00	(\$0.01)
BALANCING ENERGY			(\$824.67)	(\$321.21)	(\$1,104.28)	(\$2,857.03)	(\$247.68)
BALANCING LOSSES			\$15.91	\$10.50	\$396.92	\$1,002.55	\$6.95
BALANCING CONGESTION			\$476.61	\$797.43	\$1,761.97	\$8,153.53	\$6,283.12
FINANCIAL IMPACT CHARGE			(\$0.08)	\$0.00	\$0.00	\$0.00	\$0.00
	6	7	8	9	10	11	12
DAM ENERGY	\$0.00	\$0.00	\$0.00	(\$0.01)	\$0.01	\$0.00	\$0.01
DAM LOSSES	\$0.00	\$0.01	\$0.00	\$0.00	\$0.00	\$0.00	(\$0.01)
BALANCING ENERGY	(\$243.91)	(\$347.09)	(\$955.09)	(\$680.84)	\$12,925.05	(\$521.47)	(\$111.01)
BALANCING LOSSES	\$88.07	\$23.93	(\$54.45)	(\$34.74)	\$260.76	(\$38.20)	(\$34.77)
BALANCING CONGESTION	\$1,221.63	\$879.96	\$590.66	\$608.00	\$2,843.22	\$342.24	\$545.61
FINANCIAL IMPACT CHARGE	(\$0.05)	\$0.00	\$0.00	\$0.00	\$0.00	\$0.00	\$0.00
	13	14	15	16	17	18	19
DAM ENERGY	\$0.01	\$0.00	\$0.01	\$0.00	\$0.00	\$0.00	\$0.00
DAM LOSSES	\$0.00	\$0.00	\$0.00	\$0.00	(\$0.01)	\$0.00	\$0.00
BALANCING ENERGY	(\$208.56)	(\$381.89)	(\$63.27)	(\$1,222.08)	(\$363.06)	(\$150.45)	(\$52.83)
BALANCING LOSSES	\$18.15	(\$14.72)	(\$14.82)	(\$80.62)	\$16.04	\$11.55	(\$1.44)
BALANCING CONGESTION	(\$92.63)	(\$246.30)	\$29.61	(\$2,609.86)	\$254.30	\$496.98	\$609.86
FINANCIAL IMPACT CHARGE	\$0.00	\$0.00	\$0.00	\$0.00	\$0.00	\$0.00	\$0.00
	20	21	22	23	24	25	26
DAM ENERGY	(\$0.01)	\$0.00	\$0.00	\$0.01	\$0.00	\$0.00	\$0.01
DAM LOSSES	\$0.00	\$0.00	\$0.01	\$0.00	\$0.00	\$0.00	(\$0.01)
BALANCING ENERGY	\$19.77	(\$258.18)	\$255.51	(\$386.66)	(\$664.13)	(\$1,520.51)	(\$1,476.69)
BALANCING LOSSES	(\$2.56)	(\$42.04)	\$184.87	\$65.37	(\$35.95)	(\$126.15)	(\$108.95)
BALANCING CONGESTION	\$236.44	\$266.90	\$36.14	\$212.38	(\$32.34)	(\$265.93)	(\$1,655.71)
FINANCIAL IMPACT CHARGE	\$0.00	\$0.00	\$0.00	\$0.00	\$0.00	\$0.00	\$0.00
	27	28					
DAM ENERGY	\$0.00	\$0.00					
DAM LOSSES	(\$0.01)	\$0.01					
BALANCING ENERGY	(\$229.00)	\$147.59					
BALANCING LOSSES	(\$12.64)	(\$153.99)					
BALANCING CONGESTION	\$4,788.70	\$11,946.56					
FINANCIAL IMPACT CHARGE	\$0.00	\$0.00					



SETTLEMENTS REPORT
February 2023 Settlement Adjustment
July 10, 2023

Settlement Adjustment – Market Costs Delta Analysis

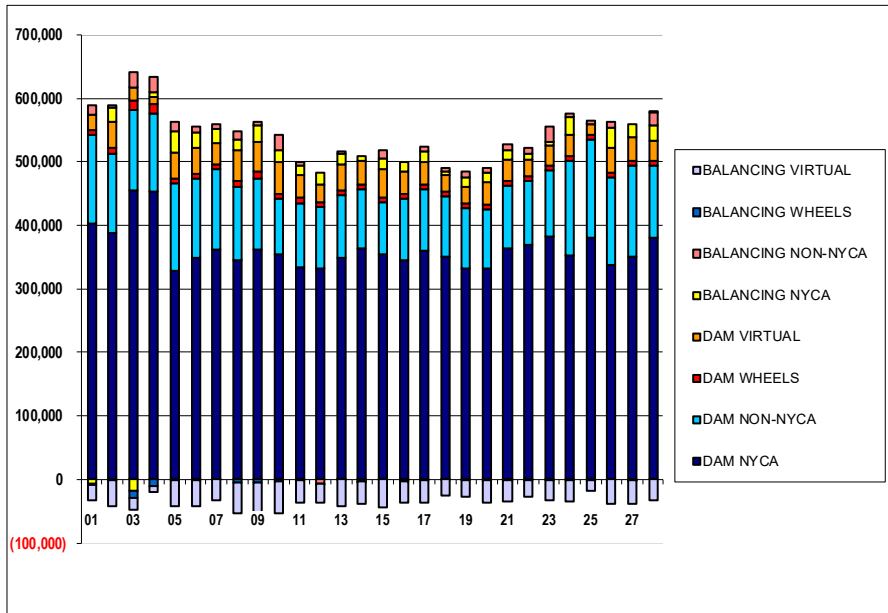
	MONDAY	TUESDAY	WEDNESDAY	THURSDAY	FRIDAY	SATURDAY	SUNDAY
ENERGY			1	2	3	4	5
TRANSMISSION SERVICE			(\$15,650.04)	(\$13,961.74)	(\$45,521.42)	(\$73,489.84)	(\$30,112.15)
UPLIFT			(\$1,819.21)	(\$1,952.54)	(\$2,062.52)	(\$1,762.83)	(\$1,925.93)
RESIDUALS			(\$15.86)	(\$0.80)	\$1,976.59	\$6.18	(\$0.01)
ANCILLARY SERVICES			(\$332.22)	\$486.71	\$1,054.61	\$6,299.05	\$6,042.38
TCC			(\$2,007.88)	(\$2,134.30)	(\$2,247.00)	(\$1,967.97)	(\$2,123.66)
			\$0.00	\$0.00	\$0.00	\$0.00	\$0.00
	6	7	8	9	10	11	12
ENERGY	(\$17,216.10)	(\$7,716.94)	(\$6,378.05)	(\$6,489.58)	(\$21,844.79)	(\$7,001.82)	(\$6,946.17)
TRANSMISSION SERVICE	(\$1,756.85)	(\$1,799.08)	(\$1,727.46)	(\$1,501.07)	(\$2,257.69)	(\$1,473.36)	(\$1,488.54)
UPLIFT	(\$0.04)	\$361.23	\$105.21	\$0.01	\$0.02	\$0.01	\$571.25
RESIDUALS	\$1,065.74	\$556.81	(\$418.88)	(\$107.59)	\$16,029.04	(\$217.43)	\$399.83
ANCILLARY SERVICES	(\$1,694.69)	(\$1,991.12)	(\$1,870.76)	(\$1,637.10)	(\$2,457.44)	(\$1,607.03)	(\$1,631.09)
TCC	\$0.00	\$0.00	\$0.00	\$0.00	\$0.00	\$0.00	\$0.00
	13	14	15	16	17	18	19
ENERGY	(\$6,541.51)	(\$5,135.06)	(\$17.26)	\$3,680.58	(\$7,166.72)	(\$7,780.62)	(\$4,783.73)
TRANSMISSION SERVICE	(\$1,535.33)	(\$1,448.37)	(\$1,145.66)	(\$189.68)	(\$1,513.10)	(\$1,752.44)	(\$1,617.03)
UPLIFT	\$144.07	\$0.00	\$215.68	(\$0.02)	\$0.02	\$0.01	\$0.00
RESIDUALS	(\$283.03)	(\$642.91)	(\$48.47)	(\$3,912.56)	(\$92.73)	\$358.08	\$555.59
ANCILLARY SERVICES	(\$1,670.35)	(\$1,585.93)	(\$1,332.05)	\$632.84	(\$548.02)	(\$479.85)	(\$1,772.78)
TCC	\$0.00	\$0.00	\$141.03	(\$833.94)	(\$1,094.43)	(\$1,431.27)	\$0.00
	20	21	22	23	24	25	26
ENERGY	(\$7,427.63)	(\$501.14)	(\$11,138.38)	(\$8,184.59)	(\$2,095.68)	\$3,666.77	(\$229.98)
TRANSMISSION SERVICE	(\$1,643.20)	(\$1,377.98)	(\$2,472.97)	(\$1,834.75)	(\$1,662.26)	(\$1,757.51)	(\$1,719.57)
UPLIFT	(\$0.11)	(\$0.02)	\$13,745.00	\$670.85	\$0.00	\$0.01	(\$0.01)
RESIDUALS	\$253.64	(\$33.32)	\$476.53	(\$108.90)	(\$732.42)	(\$1,912.59)	(\$3,241.35)
ANCILLARY SERVICES	(\$3,047.90)	(\$461.66)	\$37,610.08	(\$2,007.74)	(\$83,726.41)	(\$80,071.11)	(\$2,697.29)
TCC	\$1,247.55	(\$986.85)	(\$40,505.10)	\$13.92	\$82,073.04	\$78,240.45	\$0.00
	27	28					
ENERGY	(\$26,296.34)	\$254,413.12					
TRANSMISSION SERVICE	(\$2,270.95)	\$4,106.84					
UPLIFT	\$4,195.07	\$0.85					
RESIDUALS	\$4,547.05	\$11,940.17					
ANCILLARY SERVICES	(\$2,485.86)	\$5,760.85					
TCC	\$0.00	\$0.00					



SETTLEMENTS REPORT
February 2023 Settlement Adjustment
July 10, 2023

Initial Settlement – Market Supply Analysis

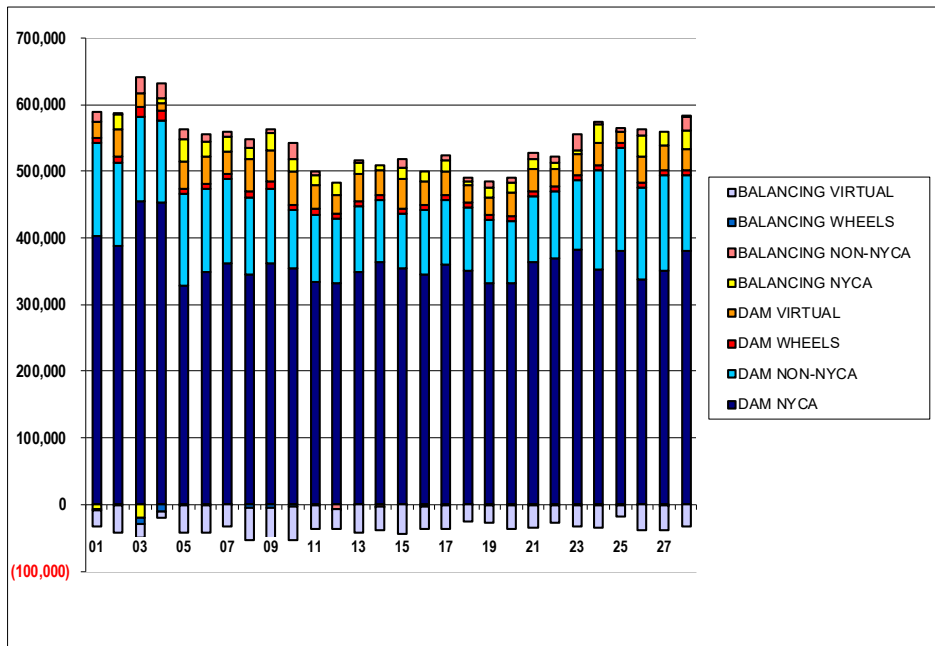
	MONDAY	TUESDAY	WEDNESDAY	THURSDAY	FRIDAY	SATURDAY	SUNDAY
			1	2	3	4	5
DAM NYCA			403,057	387,859	455,798	453,922	329,068
DAM NON-NYCA			138,982	125,860	126,085	122,725	136,348
DAM WHEELS			8,027	7,660	15,441	13,900	8,497
DAM VIRTUAL			25,121	41,096	19,272	10,849	40,449
BALANCING NYCA			(6,679)	23,331	(18,564)	7,896	34,524
BALANCING NON-NYCA			13,098	2,638	24,364	23,631	13,838
BALANCING WHEELS			(1,217)	(760)	(10,591)	(9,700)	(1,297)
BALANCING VIRTUAL			(25,121)	(41,096)	(19,272)	(10,849)	(40,449)
	6	7	8	9	10	11	12
DAM NYCA	348,842	362,708	344,481	362,277	355,349	333,440	332,158
DAM NON-NYCA	124,974	125,779	115,832	112,337	86,514	100,992	95,953
DAM WHEELS	7,828	7,250	10,335	10,960	7,638	8,775	7,475
DAM VIRTUAL	40,889	33,202	47,224	46,766	49,936	35,328	29,643
BALANCING NYCA	23,011	23,314	17,604	25,836	18,793	15,943	17,606
BALANCING NON-NYCA	9,576	7,379	13,185	5,201	24,922	5,770	(6,833)
BALANCING WHEELS	(628)	(83)	(5,155)	(5,109)	(3,274)	(1,575)	(275)
BALANCING VIRTUAL	(40,889)	(33,202)	(47,224)	(46,766)	(49,936)	(35,328)	(29,643)
	13	14	15	16	17	18	19
DAM NYCA	348,755	364,585	354,831	345,357	360,668	351,014	331,366
DAM NON-NYCA	98,351	93,161	81,236	97,563	96,367	95,597	95,651
DAM WHEELS	7,350	7,446	7,200	7,400	7,920	7,221	7,336
DAM VIRTUAL	41,812	35,946	44,676	34,636	35,420	25,739	27,162
BALANCING NYCA	17,003	8,078	16,677	14,141	16,722	4,685	13,490
BALANCING NON-NYCA	3,480	(2,324)	13,315	(1,372)	7,060	6,277	10,189
BALANCING WHEELS	(149)	(585)	(156)	(1,292)	(825)	(21)	(204)
BALANCING VIRTUAL	(41,812)	(35,946)	(44,676)	(34,636)	(35,420)	(25,739)	(27,162)
	20	21	22	23	24	25	26
DAM NYCA	331,566	363,887	369,314	382,190	352,870	381,342	338,455
DAM NON-NYCA	93,156	97,853	100,233	104,843	148,137	153,222	137,430
DAM WHEELS	8,134	7,948	7,275	7,594	8,648	7,800	7,275
DAM VIRTUAL	35,063	33,896	26,595	31,361	32,571	16,710	39,078
BALANCING NYCA	14,587	14,843	9,929	4,940	29,027	578	31,960
BALANCING NON-NYCA	8,533	8,775	8,530	24,363	3,971	5,503	9,037
BALANCING WHEELS	(1,972)	(1,348)	(1,157)	(1,759)	(1,298)	(600)	(120)
BALANCING VIRTUAL	(35,063)	(33,896)	(26,595)	(31,361)	(32,571)	(16,710)	(39,078)
	27	28					
DAM NYCA	350,406	380,016					
DAM NON-NYCA	144,600	114,536					
DAM WHEELS	7,550	7,300					
DAM VIRTUAL	36,096	32,257					
BALANCING NYCA	21,454	22,497					
BALANCING NON-NYCA	(1,649)	21,040					
BALANCING WHEELS	(323)	49					
BALANCING VIRTUAL	(36,096)	(32,257)					



SETTLEMENTS REPORT
February 2023 Settlement Adjustment
July 10, 2023

4-Month Settlement Adjustment – Market Supply Analysis

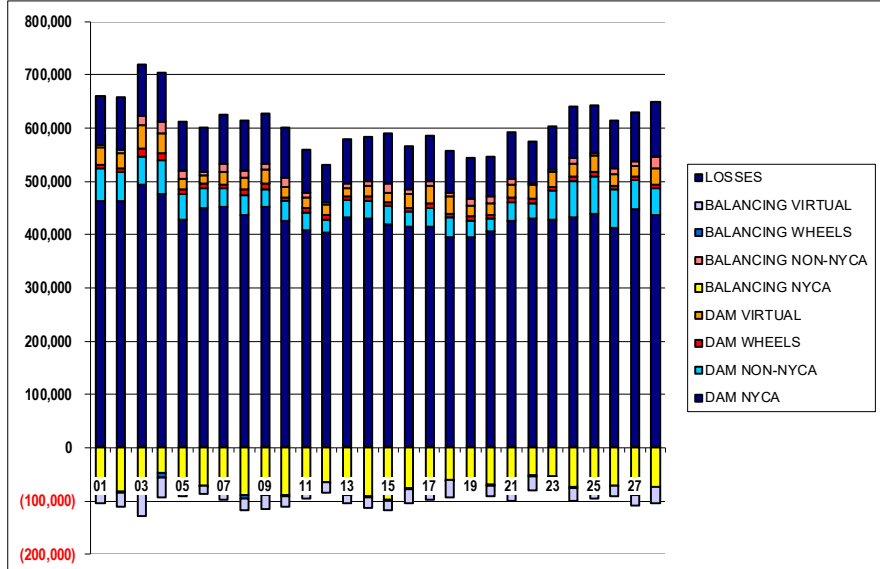
	MONDAY	TUESDAY	WEDNESDAY	THURSDAY	FRIDAY	SATURDAY	SUNDAY
			1	2	3	4	5
DAM NYCA			403,057	387,859	455,798	453,922	329,068
DAM NON-NYCA			138,982	125,860	126,085	122,725	136,348
DAM WHEELS			8,027	7,660	15,441	13,900	8,497
DAM VIRTUAL			25,121	41,096	19,272	10,849	40,449
BALANCING NYCA			(7,023)	23,020	(18,864)	7,507	34,194
BALANCING NON-NYCA			13,098	2,638	24,364	23,631	13,838
BALANCING WHEELS			(1,217)	(760)	(10,591)	(9,700)	(1,297)
BALANCING VIRTUAL			(25,121)	(41,096)	(19,272)	(10,849)	(40,449)
	6	7	8	9	10	11	12
DAM NYCA	348,842	362,708	344,481	362,277	355,349	333,440	332,158
DAM NON-NYCA	124,974	125,779	115,832	112,337	86,514	100,992	95,953
DAM WHEELS	7,828	7,250	10,335	10,960	7,638	8,775	7,475
DAM VIRTUAL	40,889	33,202	47,224	46,766	49,936	35,328	29,643
BALANCING NYCA	22,691	23,056	17,377	25,605	18,452	15,703	17,369
BALANCING NON-NYCA	9,576	7,379	13,185	5,201	24,922	5,770	(6,833)
BALANCING WHEELS	(628)	(83)	(5,155)	(5,109)	(3,274)	(1,575)	(275)
BALANCING VIRTUAL	(40,889)	(33,202)	(47,224)	(46,766)	(49,936)	(35,328)	(29,643)
	13	14	15	16	17	18	19
DAM NYCA	348,755	364,585	354,831	345,357	360,668	351,014	331,366
DAM NON-NYCA	98,351	93,161	81,236	97,563	96,367	95,597	95,651
DAM WHEELS	7,350	7,446	7,200	7,400	7,920	7,221	7,336
DAM VIRTUAL	41,812	35,946	44,676	34,636	35,420	25,739	27,162
BALANCING NYCA	16,778	7,818	16,673	14,129	16,529	4,426	13,230
BALANCING NON-NYCA	3,480	(2,324)	13,315	(1,372)	7,060	6,277	10,189
BALANCING WHEELS	(149)	(585)	(156)	(1,292)	(825)	(21)	(204)
BALANCING VIRTUAL	(41,812)	(35,946)	(44,676)	(34,636)	(35,420)	(25,739)	(27,162)
	20	21	22	23	24	25	26
DAM NYCA	331,566	363,887	369,314	382,190	352,870	381,342	338,455
DAM NON-NYCA	93,156	97,853	100,233	104,843	148,137	153,222	137,430
DAM WHEELS	8,134	7,948	7,275	7,594	8,648	7,800	7,275
DAM VIRTUAL	35,063	33,896	26,595	31,361	32,571	16,710	39,078
BALANCING NYCA	14,324	14,805	9,487	4,698	28,920	590	31,849
BALANCING NON-NYCA	8,533	8,775	8,530	24,363	3,971	5,503	9,037
BALANCING WHEELS	(1,972)	(1,348)	(1,157)	(1,759)	(1,298)	(600)	(120)
BALANCING VIRTUAL	(35,063)	(33,896)	(26,595)	(31,361)	(32,571)	(16,710)	(39,078)
	27	28					
DAM NYCA	350,406	380,016					
DAM NON-NYCA	144,600	114,536					
DAM WHEELS	7,550	7,300					
DAM VIRTUAL	36,096	32,257					
BALANCING NYCA	21,092	26,859					
BALANCING NON-NYCA	(1,649)	21,040					
BALANCING WHEELS	(323)	49					
BALANCING VIRTUAL	(36,096)	(32,257)					



SETTLEMENTS REPORT
February 2023 Settlement Adjustment
July 10, 2023

Initial Settlement – Market Withdrawals Analysis

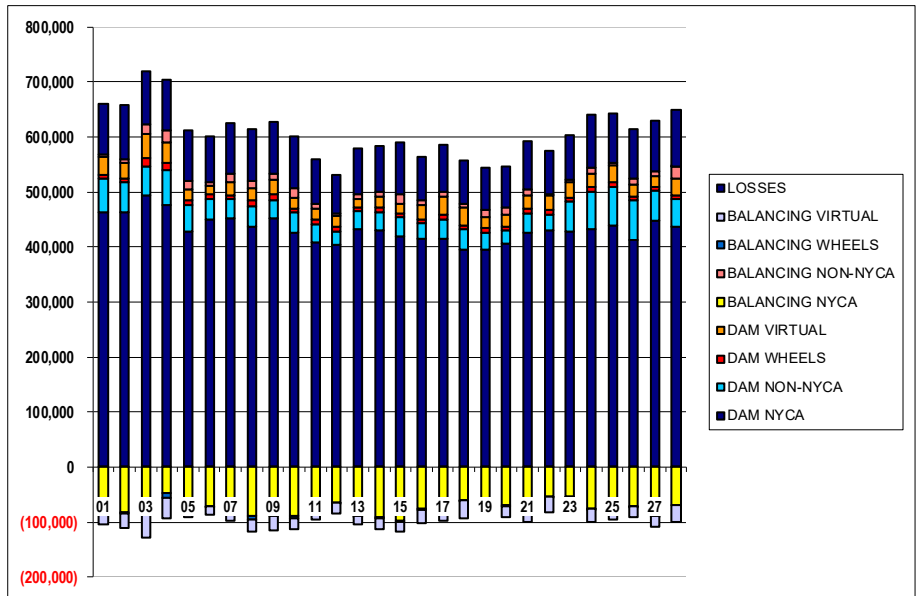
	MONDAY	TUESDAY	WEDNESDAY	THURSDAY	FRIDAY	SATURDAY	SUNDAY
			1	2	3	4	5
DAM NYCA			462,801	462,946	494,075	475,748	428,992
DAM NON-NYCA			61,018	54,728	52,277	63,725	48,231
DAM WHEELS			8,027	7,660	15,441	13,900	8,497
DAM VIRTUAL			32,183	27,673	43,762	36,153	20,153
BALANCING NYCA			(71,316)	(82,738)	(73,439)	(47,019)	(70,150)
BALANCING NON-NYCA			5,505	7,002	17,562	22,632	15,138
BALANCING WHEELS			(1,217)	(760)	(10,591)	(9,700)	(1,297)
BALANCING VIRTUAL			(32,183)	(27,673)	(43,762)	(36,153)	(20,153)
UFE/LOSSES			90,451	97,751	97,208	93,089	91,566
	6	7	8	9	10	11	12
DAM NYCA	451,167	453,183	437,708	452,095	426,101	408,274	403,994
DAM NON-NYCA	37,201	34,066	36,553	32,174	37,007	32,743	24,564
DAM WHEELS	7,828	7,250	10,335	10,960	7,638	8,775	7,475
DAM VIRTUAL	16,244	23,490	23,553	27,093	19,606	19,983	20,061
BALANCING NYCA	(70,372)	(74,861)	(89,391)	(83,016)	(88,839)	(74,387)	(63,886)
BALANCING NON-NYCA	5,443	16,370	12,776	11,708	16,133	8,769	5,560
BALANCING WHEELS	(628)	(83)	(5,155)	(5,109)	(3,274)	(1,575)	(275)
BALANCING VIRTUAL	(16,244)	(23,490)	(23,553)	(27,093)	(19,606)	(19,983)	(20,061)
UFE/LOSSES	82,963	90,402	93,456	92,690	95,177	80,745	68,654
	13	14	15	16	17	18	19
DAM NYCA	433,125	430,900	419,978	415,235	415,575	395,728	395,805
DAM NON-NYCA	31,959	33,252	33,848	27,763	34,613	36,926	30,945
DAM WHEELS	7,350	7,446	7,200	7,400	7,920	7,221	7,336
DAM VIRTUAL	15,542	20,878	18,549	25,841	33,723	31,875	19,374
BALANCING NYCA	(88,962)	(91,848)	(98,726)	(76,524)	(63,174)	(60,841)	(67,420)
BALANCING NON-NYCA	7,448	8,820	16,795	8,872	9,494	6,921	14,285
BALANCING WHEELS	(149)	(585)	(156)	(1,292)	(825)	(21)	(204)
BALANCING VIRTUAL	(15,542)	(20,878)	(18,549)	(25,841)	(33,723)	(31,875)	(19,374)
UFE/LOSSES	84,021	82,376	94,164	80,344	84,309	78,839	77,082
	20	21	22	23	24	25	26
DAM NYCA	405,226	426,944	429,505	428,791	432,459	438,487	413,023
DAM NON-NYCA	24,566	34,185	30,289	54,046	67,684	71,285	72,349
DAM WHEELS	8,134	7,948	7,275	7,594	8,648	7,800	7,275
DAM VIRTUAL	20,903	25,356	27,159	27,648	24,083	30,136	20,198
BALANCING NYCA	(68,694)	(73,969)	(52,743)	(52,860)	(74,659)	(64,192)	(70,574)
BALANCING NON-NYCA	13,276	9,429	2,545	5,234	12,438	5,091	10,719
BALANCING WHEELS	(1,972)	(1,348)	(1,157)	(1,759)	(1,298)	(600)	(120)
BALANCING VIRTUAL	(20,903)	(25,356)	(27,159)	(27,648)	(24,083)	(30,136)	(20,198)
UFE/LOSSES	73,467	88,768	78,409	81,126	96,084	89,974	91,365
	27	28					
DAM NYCA	447,300	437,892					
DAM NON-NYCA	55,152	49,032					
DAM WHEELS	7,550	7,300					
DAM VIRTUAL	19,517	31,253					
BALANCING NYCA	(87,867)	(73,033)					
BALANCING NON-NYCA	8,220	21,654					
BALANCING WHEELS	(323)	49					
BALANCING VIRTUAL	(19,517)	(31,253)					
UFE/LOSSES	92,006	102,545					



SETTLEMENTS REPORT
February 2023 Settlement Adjustment
July 10, 2023

4-Month Settlement Adjustment – Market Withdrawals Analysis

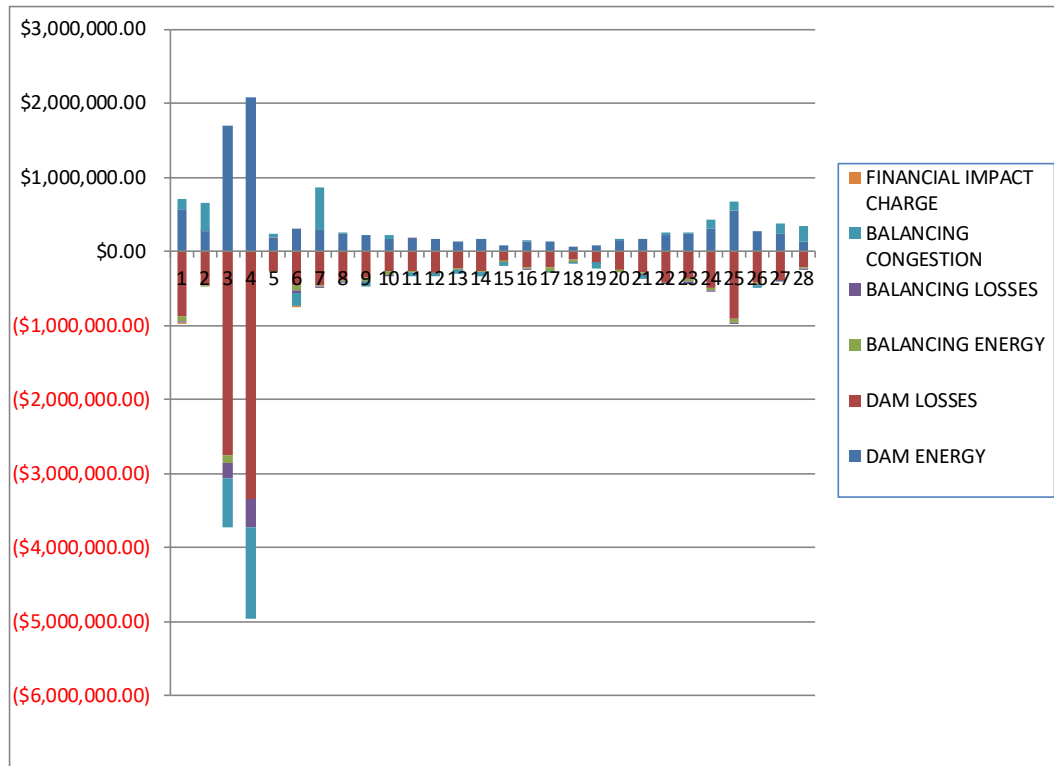
	MONDAY	TUESDAY	WEDNESDAY	THURSDAY	FRIDAY	SATURDAY	SUNDAY
			1	2	3	4	5
DAM NYCA			462,801	462,946	494,075	475,748	428,992
DAM NON-NYCA			61,018	54,728	52,277	63,725	48,231
DAM WHEELS			8,027	7,660	15,441	13,900	8,497
DAM VIRTUAL			32,183	27,673	43,762	36,153	20,153
BALANCING NYCA			(71,624)	(83,020)	(73,720)	(47,390)	(70,485)
BALANCING NON-NYCA			5,505	7,002	17,562	22,632	15,138
BALANCING WHEELS			(1,217)	(760)	(10,591)	(9,700)	(1,297)
BALANCING VIRTUAL			(32,183)	(27,673)	(43,762)	(36,153)	(20,153)
UFE/LOSSES			90,415	97,722	97,189	93,071	91,571
			6	7	8	9	10
DAM NYCA	451,167	453,183	437,708	452,095	426,101	408,274	403,994
DAM NON-NYCA	37,201	34,086	36,553	32,174	37,007	32,743	24,564
DAM WHEELS	7,828	7,250	10,335	10,960	7,638	8,775	7,475
DAM VIRTUAL	16,244	23,490	23,553	27,093	19,606	19,983	20,061
BALANCING NYCA	(70,679)	(75,104)	(89,568)	(83,218)	(89,684)	(74,601)	(64,116)
BALANCING NON-NYCA	5,443	16,370	12,776	11,708	16,133	8,769	5,560
BALANCING WHEELS	(628)	(83)	(5,155)	(5,109)	(3,274)	(1,575)	(275)
BALANCING VIRTUAL	(16,244)	(23,490)	(23,553)	(27,093)	(19,606)	(19,983)	(20,061)
UFE/LOSSES	82,950	90,388	93,406	92,661	95,680	80,720	68,646
			13	14	15	16	17
DAM NYCA	433,125	430,900	419,978	415,235	415,575	395,728	395,805
DAM NON-NYCA	31,959	33,252	33,848	27,763	34,613	36,926	30,945
DAM WHEELS	7,350	7,446	7,200	7,400	7,920	7,221	7,336
DAM VIRTUAL	15,542	20,878	18,549	25,841	33,723	31,875	19,374
BALANCING NYCA	(89,169)	(92,072)	(98,709)	(75,804)	(63,356)	(61,092)	(67,672)
BALANCING NON-NYCA	7,448	8,820	16,795	8,872	9,494	6,921	14,285
BALANCING WHEELS	(149)	(585)	(156)	(1,292)	(825)	(21)	(204)
BALANCING VIRTUAL	(15,542)	(20,878)	(18,549)	(25,841)	(33,723)	(31,875)	(19,374)
UFE/LOSSES	84,002	82,341	94,143	79,611	84,298	78,831	77,075
			20	21	22	23	24
DAM NYCA	405,226	426,944	429,505	428,791	432,459	438,487	413,023
DAM NON-NYCA	24,566	34,185	30,289	54,046	67,684	71,285	72,349
DAM WHEELS	8,134	7,948	7,275	7,594	8,648	7,800	7,275
DAM VIRTUAL	20,903	25,356	27,159	27,648	24,083	30,136	20,198
BALANCING NYCA	(68,960)	(73,994)	(53,195)	(53,092)	(74,733)	(64,134)	(70,609)
BALANCING NON-NYCA	13,276	9,429	2,545	5,234	12,438	5,091	10,719
BALANCING WHEELS	(1,972)	(1,348)	(1,157)	(1,759)	(1,298)	(600)	(120)
BALANCING VIRTUAL	(20,903)	(25,356)	(27,159)	(27,648)	(24,083)	(30,136)	(20,198)
UFE/LOSSES	73,471	88,756	78,902	81,115	96,051	89,929	91,289
			27	28			
DAM NYCA	447,300	437,892					
DAM NON-NYCA	55,152	49,032					
DAM WHEELS	7,550	7,300					
DAM VIRTUAL	19,517	31,253					
BALANCING NYCA	(88,208)	(68,670)					
BALANCING NON-NYCA	8,220	21,654					
BALANCING WHEELS	(323)	49					
BALANCING VIRTUAL	(19,517)	(31,253)					
UFE/LOSSES	91,985	102,543					



SETTLEMENTS REPORT
February 2023 Settlement Adjustment
July 10, 2023

Initial Settlement – Market Residuals Analysis

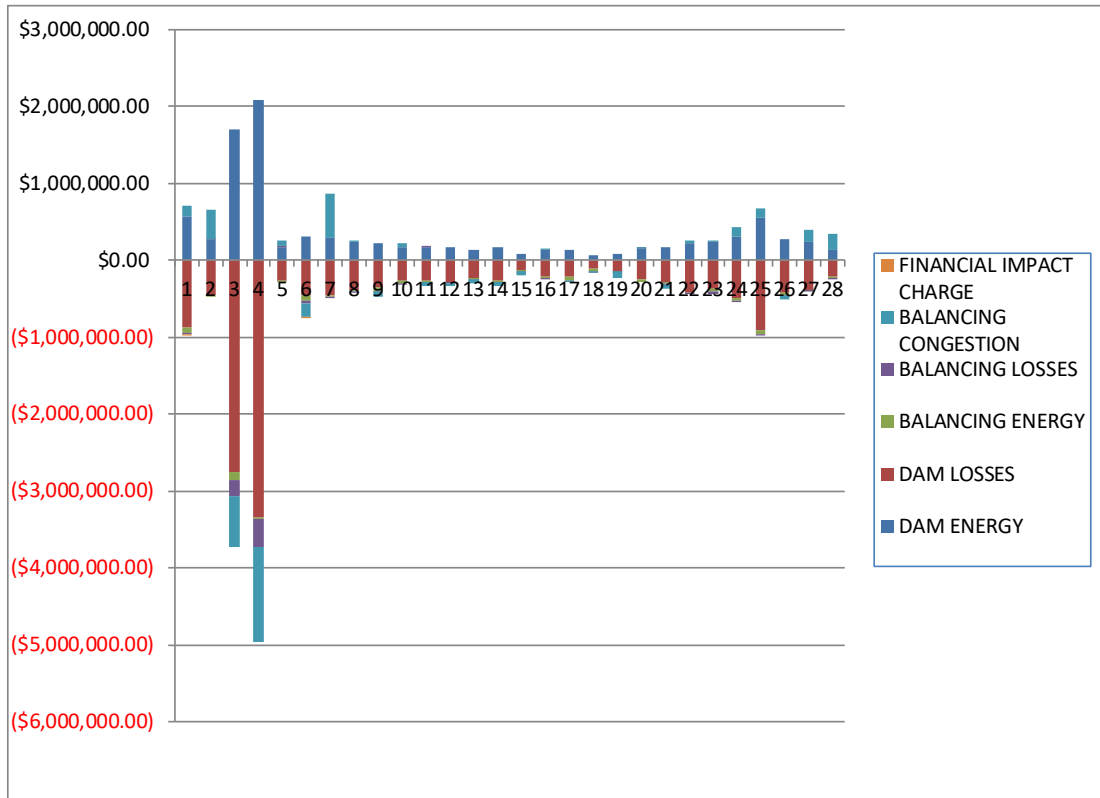
	MONDAY	TUESDAY	WEDNESDAY	THURSDAY	FRIDAY	SATURDAY	SUNDAY
			1	2	3	4	5
DAM ENERGY			\$559,115.39	\$271,414.74	\$1,704,442.37	\$2,078,332.52	\$173,983.82
DAM LOSSES			(\$884,333.12)	(\$454,792.79)	(\$2,758,680.72)	(\$3,341,869.90)	(\$274,424.71)
BALANCING ENERGY			(\$59,653.70)	(\$17,931.23)	(\$104,331.67)	(\$12,216.13)	(\$5,982.22)
BALANCING LOSSES			(\$18,573.26)	\$2,511.22	(\$204,619.71)	(\$376,519.76)	\$4,102.66
BALANCING CONGESTION			\$146,317.96	\$371,976.21	(\$669,859.23)	(\$1,232,559.88)	\$60,579.21
FINACIAL IMPACT CHARGE			(\$33.72)	\$0.00	\$0.00	\$0.00	\$0.00
	6	7	8	9	10	11	12
DAM ENERGY	\$299,761.98	\$283,814.32	\$228,573.45	\$218,662.13	\$161,327.78	\$158,579.50	\$168,571.69
DAM LOSSES	(\$465,685.72)	(\$458,017.73)	(\$392,075.80)	(\$357,832.72)	(\$273,644.22)	(\$266,403.69)	(\$281,331.49)
BALANCING ENERGY	(\$61,894.18)	(\$23,333.55)	(\$19,100.25)	(\$43,463.82)	(\$40,593.51)	(\$27,790.39)	(\$10,223.67)
BALANCING LOSSES	(\$38,795.90)	(\$21,269.14)	(\$15,710.49)	(\$14,184.16)	(\$4,057.02)	\$1,290.37	(\$9,540.46)
BALANCING CONGESTION	(\$171,895.41)	\$578,385.74	\$6,361.73	(\$63,656.13)	\$51,278.67	(\$35,892.77)	(\$31,047.27)
FINACIAL IMPACT CHARGE	(\$38.43)	\$0.00	\$0.00	\$0.00	\$0.00	\$0.00	\$0.00
	13	14	15	16	17	18	19
DAM ENERGY	\$139,180.13	\$159,958.98	\$83,956.48	\$128,417.85	\$124,840.79	\$68,739.24	\$79,072.86
DAM LOSSES	(\$238,951.69)	(\$271,523.74)	(\$137,613.99)	(\$218,677.55)	(\$216,362.78)	(\$120,629.83)	(\$140,138.97)
BALANCING ENERGY	(\$5,608.61)	(\$11,743.99)	(\$7,954.51)	(\$13,513.33)	(\$49,999.36)	(\$22,367.53)	(\$25.15)
BALANCING LOSSES	(\$10,458.30)	(\$4,591.75)	(\$2,298.01)	(\$2,348.03)	(\$5,046.00)	(\$656.33)	(\$4,495.67)
BALANCING CONGESTION	(\$50,778.14)	(\$50,312.50)	(\$52,405.38)	\$20,092.95	(\$5,217.68)	(\$5,393.36)	(\$81,415.30)
FINACIAL IMPACT CHARGE	\$0.00	\$0.00	\$0.00	\$0.00	\$0.00	\$0.00	\$0.00
	20	21	22	23	24	25	26
DAM ENERGY	\$150,058.35	\$165,572.58	\$223,242.17	\$230,069.34	\$302,697.54	\$556,787.40	\$264,583.69
DAM LOSSES	(\$259,031.51)	(\$289,329.64)	(\$418,376.69)	(\$375,001.11)	(\$495,880.86)	(\$909,155.15)	(\$427,638.27)
BALANCING ENERGY	(\$24,441.62)	(\$9,577.79)	(\$1,646.45)	(\$37,342.36)	(\$32,875.80)	(\$52,840.45)	(\$23,366.80)
BALANCING LOSSES	\$1,209.42	(\$16,186.60)	(\$4,328.36)	(\$32,057.30)	(\$16,693.43)	(\$1,950.59)	(\$10,106.87)
BALANCING CONGESTION	\$5,912.81	(\$58,714.27)	\$28,306.33	\$14,267.25	\$130,636.02	\$105,178.15	(\$40,714.35)
FINACIAL IMPACT CHARGE	\$0.00	\$0.00	\$0.00	\$0.00	\$0.00	\$0.00	\$0.00
	27	28					
DAM ENERGY	\$242,592.92	\$128,271.10					
DAM LOSSES	(\$391,571.23)	(\$219,748.30)					
BALANCING ENERGY	(\$3,707.37)	(\$9,524.69)					
BALANCING LOSSES	(\$5,099.28)	(\$1,490.30)					
BALANCING CONGESTION	\$137,604.83	\$205,758.98					
FINACIAL IMPACT CHARGE	\$0.00	\$0.00					



SETTLEMENTS REPORT
February 2023 Settlement Adjustment
July 10, 2023

4-Month Settlement Adjustment – Market Residuals Analysis

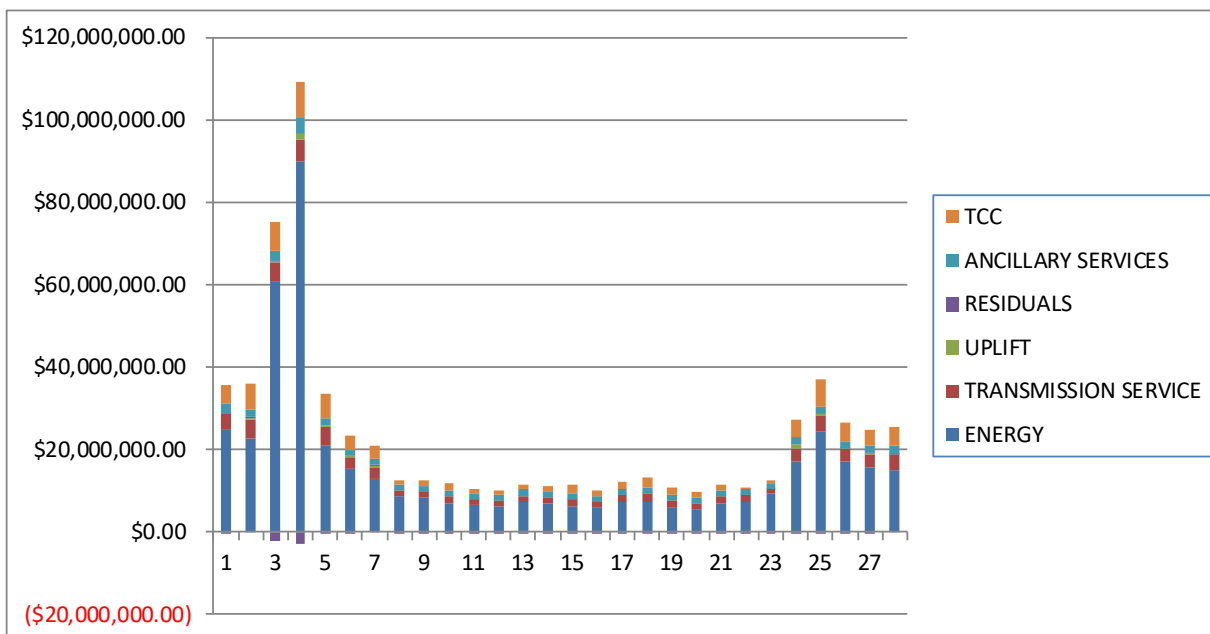
	MONDAY	TUESDAY	WEDNESDAY	THURSDAY	FRIDAY	SATURDAY	SUNDAY
			1	2	3	4	5
DAM ENERGY			\$559,115.39	\$271,414.73	\$1,704,442.37	\$2,078,332.52	\$173,983.82
DAM LOSSES			(\$884,333.11)	(\$454,792.79)	(\$2,758,680.72)	(\$3,341,869.90)	(\$274,424.72)
BALANCING ENERGY			(\$60,478.37)	(\$18,252.44)	(\$105,435.95)	(\$15,073.16)	(\$6,229.90)
BALANCING LOSSES			(\$18,557.35)	\$2,521.72	(\$204,222.79)	(\$375,517.21)	\$4,109.61
BALANCING CONGESTION			\$146,794.57	\$372,773.64	(\$668,097.26)	(\$1,224,406.35)	\$66,862.33
FINANCIAL IMPACT CHARGE			(\$33.80)	\$0.00	\$0.00	\$0.00	\$0.00
	6	7	8	9	10	11	12
DAM ENERGY	\$299,761.98	\$283,814.32	\$228,573.45	\$218,662.12	\$161,327.79	\$158,579.50	\$168,571.70
DAM LOSSES	(\$465,685.72)	(\$458,017.72)	(\$392,075.80)	(\$357,832.72)	(\$273,644.22)	(\$266,403.69)	(\$281,331.50)
BALANCING ENERGY	(\$62,138.09)	(\$23,680.64)	(\$20,055.34)	(\$44,144.66)	(\$27,668.46)	(\$28,311.86)	(\$10,334.68)
BALANCING LOSSES	(\$38,707.83)	(\$21,245.21)	(\$15,764.94)	(\$14,218.90)	(\$3,796.26)	\$1,252.17	(\$9,575.23)
BALANCING CONGESTION	(\$170,673.78)	\$579,265.70	\$6,952.39	(\$63,048.13)	\$54,121.89	(\$35,550.53)	(\$30,501.66)
FINANCIAL IMPACT CHARGE	(\$38.48)	\$0.00	\$0.00	\$0.00	\$0.00	\$0.00	\$0.00
	13	14	15	16	17	18	19
DAM ENERGY	\$139,180.14	\$159,958.98	\$83,956.49	\$128,417.85	\$124,840.79	\$68,739.24	\$79,072.86
DAM LOSSES	(\$238,951.69)	(\$271,523.74)	(\$137,613.99)	(\$218,677.55)	(\$216,362.79)	(\$120,629.83)	(\$140,138.97)
BALANCING ENERGY	(\$5,817.17)	(\$12,125.88)	(\$8,017.78)	(\$14,735.41)	(\$50,362.42)	(\$22,517.98)	(\$77.98)
BALANCING LOSSES	(\$10,440.15)	(\$4,606.47)	(\$2,312.83)	(\$2,428.65)	(\$5,029.96)	(\$644.78)	(\$4,497.11)
BALANCING CONGESTION	(\$50,870.77)	(\$50,558.80)	(\$52,375.77)	\$17,483.09	(\$4,963.38)	(\$4,896.38)	(\$80,805.44)
FINANCIAL IMPACT CHARGE	\$0.00	\$0.00	\$0.00	\$0.00	\$0.00	\$0.00	\$0.00
	20	21	22	23	24	25	26
DAM ENERGY	\$150,058.34	\$165,572.58	\$223,242.17	\$230,069.35	\$302,697.54	\$556,787.40	\$264,583.70
DAM LOSSES	(\$259,031.51)	(\$289,329.64)	(\$418,376.68)	(\$375,001.11)	(\$495,880.86)	(\$909,155.15)	(\$427,638.28)
BALANCING ENERGY	(\$24,421.85)	(\$9,835.97)	(\$1,390.94)	(\$37,729.02)	(\$33,539.93)	(\$54,360.96)	(\$24,843.49)
BALANCING LOSSES	\$1,206.86	(\$16,228.64)	(\$4,143.49)	(\$31,991.93)	(\$16,729.38)	(\$2,076.74)	(\$10,215.82)
BALANCING CONGESTION	\$6,149.25	(\$58,447.37)	\$28,342.47	\$14,479.63	\$130,603.68	\$104,912.22	(\$42,370.06)
FINANCIAL IMPACT CHARGE	\$0.00	\$0.00	\$0.00	\$0.00	\$0.00	\$0.00	\$0.00
	27	28					
DAM ENERGY	\$242,592.92	\$128,271.10					
DAM LOSSES	(\$391,571.24)	(\$219,748.29)					
BALANCING ENERGY	(\$3,936.37)	(\$9,377.10)					
BALANCING LOSSES	(\$5,111.92)	(\$1,644.29)					
BALANCING CONGESTION	\$142,393.53	\$217,705.54					
FINANCIAL IMPACT CHARGE	\$0.00	\$0.00					



SETTLEMENTS REPORT
February 2023 Settlement Adjustment
July 10, 2023

Initial Settlement – Market Costs Analysis

	MONDAY	TUESDAY	WEDNESDAY	THURSDAY	FRIDAY	SATURDAY	SUNDAY
			1	2	3	4	5
ENERGY			\$24,809,666.94	\$22,525,977.90	\$60,789,709.32	\$89,879,064.09	\$20,839,673.95
TRANSMISSION SERVICE			\$3,797,724.70	\$4,892,255.62	\$4,491,083.07	\$5,405,239.43	\$4,729,468.63
UPLIFT			\$179,856.45	\$189,591.24	\$437,261.57	\$1,281,124.46	\$216,135.28
RESIDUALS			(\$257,160.45)	\$173,178.15	(\$2,033,048.96)	(\$2,884,833.15)	(\$41,741.24)
ANCILLARY SERVICES			\$2,255,137.12	\$1,905,545.39	\$2,610,582.89	\$3,874,353.74	\$1,712,553.88
TCC			\$4,726,496.43	\$6,449,882.78	\$6,963,219.30	\$8,847,665.71	\$6,126,077.23
	6	7	8	9	10	11	12
ENERGY	\$15,271,553.40	\$13,039,525.98	\$8,573,530.54	\$8,207,059.68	\$7,022,206.52	\$6,699,725.65	\$6,366,478.84
TRANSMISSION SERVICE	\$2,864,809.55	\$2,517,544.57	\$1,373,015.33	\$1,555,395.96	\$1,578,380.05	\$1,238,697.02	\$1,216,901.35
UPLIFT	\$193,302.08	\$383,494.14	\$52,940.84	\$40,264.38	\$54,328.63	\$27,670.93	\$29,841.82
RESIDUALS	(\$438,547.66)	\$359,579.64	(\$191,951.36)	(\$260,474.70)	(\$105,688.30)	(\$170,216.98)	(\$163,571.20)
ANCILLARY SERVICES	\$1,735,899.35	\$1,652,630.95	\$1,466,249.39	\$1,479,623.57	\$1,474,169.59	\$1,435,039.43	\$1,435,468.11
TCC	\$3,302,873.68	\$3,144,841.04	\$1,110,320.63	\$1,195,466.82	\$1,820,739.02	\$923,747.09	\$936,323.11
	13	14	15	16	17	18	19
ENERGY	\$7,164,674.14	\$7,056,945.82	\$6,110,296.75	\$5,888,466.56	\$7,385,117.99	\$7,209,564.43	\$6,019,316.16
TRANSMISSION SERVICE	\$1,566,923.39	\$1,391,032.42	\$1,906,408.91	\$1,441,419.82	\$1,701,933.73	\$2,065,078.05	\$1,685,688.90
UPLIFT	\$70,972.15	\$39,425.49	\$45,021.94	\$32,287.57	\$50,060.17	\$87,232.08	\$37,149.06
RESIDUALS	(\$166,616.61)	(\$178,213.00)	(\$116,315.41)	(\$86,028.11)	(\$151,785.03)	(\$80,307.81)	(\$147,002.23)
ANCILLARY SERVICES	\$1,474,740.52	\$1,436,150.05	\$1,421,151.85	\$1,461,051.61	\$1,469,282.72	\$1,506,905.23	\$1,478,495.66
TCC	\$1,281,402.60	\$1,073,605.14	\$2,158,024.75	\$1,379,573.41	\$1,697,604.80	\$2,423,680.57	\$1,742,932.45
	20	21	22	23	24	25	26
ENERGY	\$5,710,828.08	\$7,116,045.64	\$7,332,909.78	\$9,313,682.95	\$17,065,579.71	\$24,294,428.61	\$16,963,660.64
TRANSMISSION SERVICE	\$1,332,578.53	\$1,527,102.83	\$1,758,786.80	\$1,003,645.28	\$3,174,672.43	\$4,104,417.47	\$3,392,598.87
UPLIFT	\$29,805.13	\$37,238.96	\$34,266.41	\$24,056.89	\$923,527.67	\$94,158.19	\$66,117.62
RESIDUALS	(\$126,292.55)	(\$208,235.72)	(\$172,803.00)	(\$200,064.18)	(\$112,116.53)	(\$301,980.64)	(\$237,242.60)
ANCILLARY SERVICES	\$1,390,251.52	\$1,436,039.52	\$1,379,031.39	\$1,534,463.62	\$1,934,227.28	\$1,944,687.06	\$1,595,817.90
TCC	\$1,172,363.48	\$1,371,773.24	\$333,040.53	\$522,338.16	\$4,037,283.26	\$6,680,539.60	\$4,508,008.72
	27	28					
ENERGY	\$15,717,773.85	\$15,073,807.15					
TRANSMISSION SERVICE	\$3,281,864.58	\$3,640,910.75					
UPLIFT	\$126,276.25	\$149,122.21					
RESIDUALS	(\$20,180.13)	\$103,266.79					
ANCILLARY SERVICES	\$1,870,256.92	\$1,889,236.38					
TCC	\$3,798,880.18	\$4,809,625.15					



SETTLEMENTS REPORT
February 2023 Settlement Adjustment
July 10, 2023

4-Month Settlement Adjustment – Market Costs Analysis

	MONDAY	TUESDAY	WEDNESDAY	THURSDAY	FRIDAY	SATURDAY	SUNDAY
			1	2	3	4	5
ENERGY			\$24,794,016.90	\$22,512,016.16	\$60,744,187.90	\$89,805,574.25	\$20,809,561.80
TRANSMISSION SERVICE			\$3,795,905.49	\$4,890,303.08	\$4,489,020.55	\$5,403,476.60	\$4,727,542.70
UPLIFT			\$179,840.59	\$189,590.44	\$439,238.16	\$1,281,130.64	\$216,135.27
RESIDUALS			(\$257,492.67)	\$173,664.86	(\$2,031,994.35)	(\$2,878,534.10)	(\$35,698.86)
ANCILLARY SERVICES			\$2,253,129.24	\$1,903,411.09	\$2,608,335.89	\$3,872,385.77	\$1,710,430.22
TCC			\$4,726,496.43	\$6,449,882.78	\$6,963,219.30	\$8,847,665.71	\$6,126,077.23
	6	7	8	9	10	11	12
ENERGY	\$15,254,337.30	\$13,031,809.04	\$8,567,152.49	\$8,200,570.10	\$7,000,361.73	\$6,692,723.83	\$6,359,532.67
TRANSMISSION SERVICE	\$2,863,052.70	\$2,515,745.49	\$1,371,287.87	\$1,553,894.89	\$1,576,122.36	\$1,237,223.66	\$1,215,412.81
UPLIFT	\$193,302.04	\$383,855.37	\$53,046.05	\$40,264.39	\$54,328.65	\$27,670.94	\$30,413.07
RESIDUALS	(\$437,481.92)	\$360,136.45	(\$192,370.24)	(\$260,582.29)	(\$89,659.26)	(\$170,434.41)	(\$163,171.37)
ANCILLARY SERVICES	\$1,734,204.66	\$1,650,639.83	\$1,464,378.63	\$1,477,986.47	\$1,471,712.15	\$1,433,432.40	\$1,433,837.02
TCC	\$3,302,873.68	\$3,144,841.04	\$1,110,320.63	\$1,195,466.82	\$1,820,739.02	\$923,747.09	\$936,323.11
	13	14	15	16	17	18	19
ENERGY	\$7,158,132.63	\$7,051,810.76	\$6,110,279.49	\$5,892,147.14	\$7,377,951.27	\$7,201,783.81	\$6,014,532.43
TRANSMISSION SERVICE	\$1,565,388.06	\$1,389,584.05	\$1,905,263.25	\$1,441,230.14	\$1,700,420.63	\$2,063,325.61	\$1,684,071.87
UPLIFT	\$71,116.22	\$39,425.49	\$45,237.62	\$32,287.55	\$50,060.19	\$87,232.09	\$37,149.06
RESIDUALS	(\$166,899.64)	(\$178,855.91)	(\$116,363.88)	(\$89,940.67)	(\$151,877.76)	(\$79,949.73)	(\$146,446.64)
ANCILLARY SERVICES	\$1,473,070.17	\$1,434,564.12	\$1,419,819.80	\$1,461,684.45	\$1,468,734.70	\$1,506,425.38	\$1,476,722.88
TCC	\$1,281,402.60	\$1,073,605.14	\$2,158,165.78	\$1,378,739.47	\$1,696,510.37	\$2,422,249.30	\$1,742,932.45
	20	21	22	23	24	25	26
ENERGY	\$5,703,400.45	\$7,115,544.50	\$7,321,771.40	\$9,305,498.36	\$17,063,484.03	\$24,298,095.38	\$16,963,430.66
TRANSMISSION SERVICE	\$1,330,935.33	\$1,525,724.85	\$1,756,313.83	\$1,001,810.53	\$3,173,010.17	\$4,102,659.96	\$3,390,879.30
UPLIFT	\$29,805.02	\$37,238.94	\$48,011.41	\$24,727.74	\$923,527.67	\$94,158.20	\$66,117.61
RESIDUALS	(\$126,038.91)	(\$208,269.04)	(\$172,326.47)	(\$200,173.08)	(\$112,848.95)	(\$303,893.23)	(\$240,483.95)
ANCILLARY SERVICES	\$1,387,203.62	\$1,435,577.86	\$1,416,641.47	\$1,532,455.88	\$1,850,500.87	\$1,864,615.95	\$1,593,120.61
TCC	\$1,173,611.03	\$1,370,786.39	\$292,535.43	\$522,352.08	\$4,119,356.30	\$6,758,780.05	\$4,508,008.72
	27	28					
ENERGY	\$15,691,477.51	\$15,328,220.27					
TRANSMISSION SERVICE	\$3,279,593.63	\$3,645,017.59					
UPLIFT	\$130,471.32	\$149,123.06					
RESIDUALS	(\$15,633.08)	\$115,206.96					
ANCILLARY SERVICES	\$1,867,771.06	\$1,894,997.23					
TCC	\$3,798,880.18	\$4,809,625.15					

