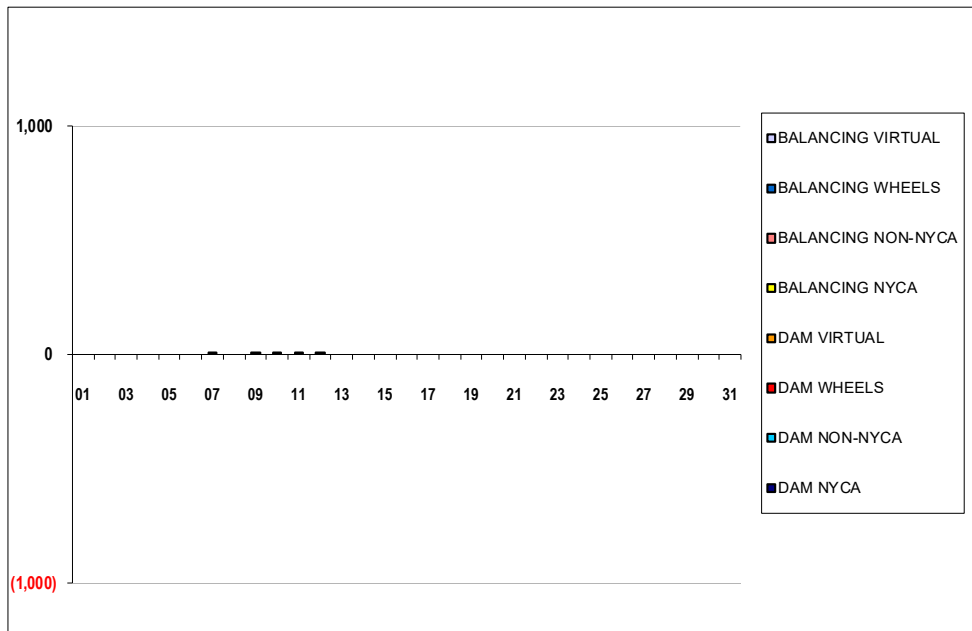


SETTLEMENTS REPORT
 March 2023 Close-Out Settlement
 December 7, 2023

Close-Out Settlement – Market Supply Delta Analysis

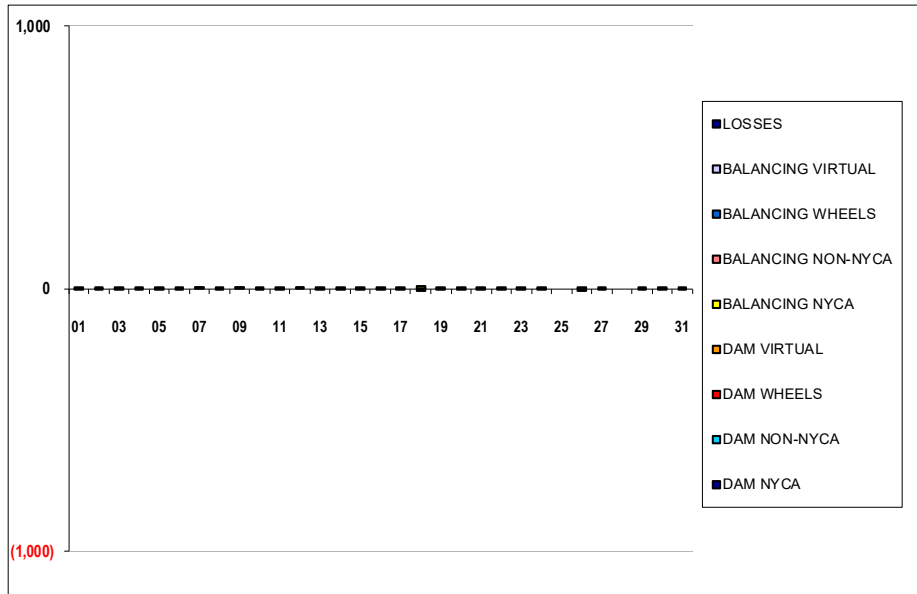
	MONDAY	TUESDAY	WEDNESDAY	THURSDAY	FRIDAY	SATURDAY	SUNDAY
			1	2	3	4	5
DAM NYCA			0	0	0	0	0
DAM NON-NYCA			0	0	0	0	0
DAM WHEELS			0	0	0	0	0
DAM VIRTUAL			0	0	0	0	0
BALANCING NYCA			0	0	0	0	0
BALANCING NON-NYCA			0	0	0	0	0
BALANCING WHEELS			0	0	0	0	0
BALANCING VIRTUAL			0	0	0	0	0
	6	7	8	9	10	11	12
DAM NYCA	0	0	0	0	0	0	0
DAM NON-NYCA	0	0	0	0	0	0	0
DAM WHEELS	0	0	0	0	0	0	0
DAM VIRTUAL	0	0	0	0	0	0	0
BALANCING NYCA	0	0	0	2	1	1	1
BALANCING NON-NYCA	0	0	0	0	0	0	0
BALANCING WHEELS	0	0	0	0	0	0	0
BALANCING VIRTUAL	0	0	0	0	0	0	0
	13	14	15	16	17	18	19
DAM NYCA	0	0	0	0	0	0	0
DAM NON-NYCA	0	0	0	0	0	0	0
DAM WHEELS	0	0	0	0	0	0	0
DAM VIRTUAL	0	0	0	0	0	0	0
BALANCING NYCA	0	0	0	0	0	0	0
BALANCING NON-NYCA	0	0	0	0	0	0	0
BALANCING WHEELS	0	0	0	0	0	0	0
BALANCING VIRTUAL	0	0	0	0	0	0	0
	20	21	22	23	24	25	26
DAM NYCA	0	0	0	0	0	0	0
DAM NON-NYCA	0	0	0	0	0	0	0
DAM WHEELS	0	0	0	0	0	0	0
DAM VIRTUAL	0	0	0	0	0	0	0
BALANCING NYCA	0	0	0	0	0	0	0
BALANCING NON-NYCA	0	0	0	0	0	0	0
BALANCING WHEELS	0	0	0	0	0	0	0
BALANCING VIRTUAL	0	0	0	0	0	0	0
	27	28	29	30	31		
DAM NYCA	0	0	0	0	0		
DAM NON-NYCA	0	0	0	0	0		
DAM WHEELS	0	0	0	0	0		
DAM VIRTUAL	0	0	0	0	0		
BALANCING NYCA	0	0	0	0	0		
BALANCING NON-NYCA	0	0	0	0	0		
BALANCING WHEELS	0	0	0	0	0		
BALANCING VIRTUAL	0	0	0	0	0		



SETTLEMENTS REPORT
 March 2023 Close-Out Settlement
 December 7, 2023

Close-Out Settlement – Market Withdrawals Delta Analysis

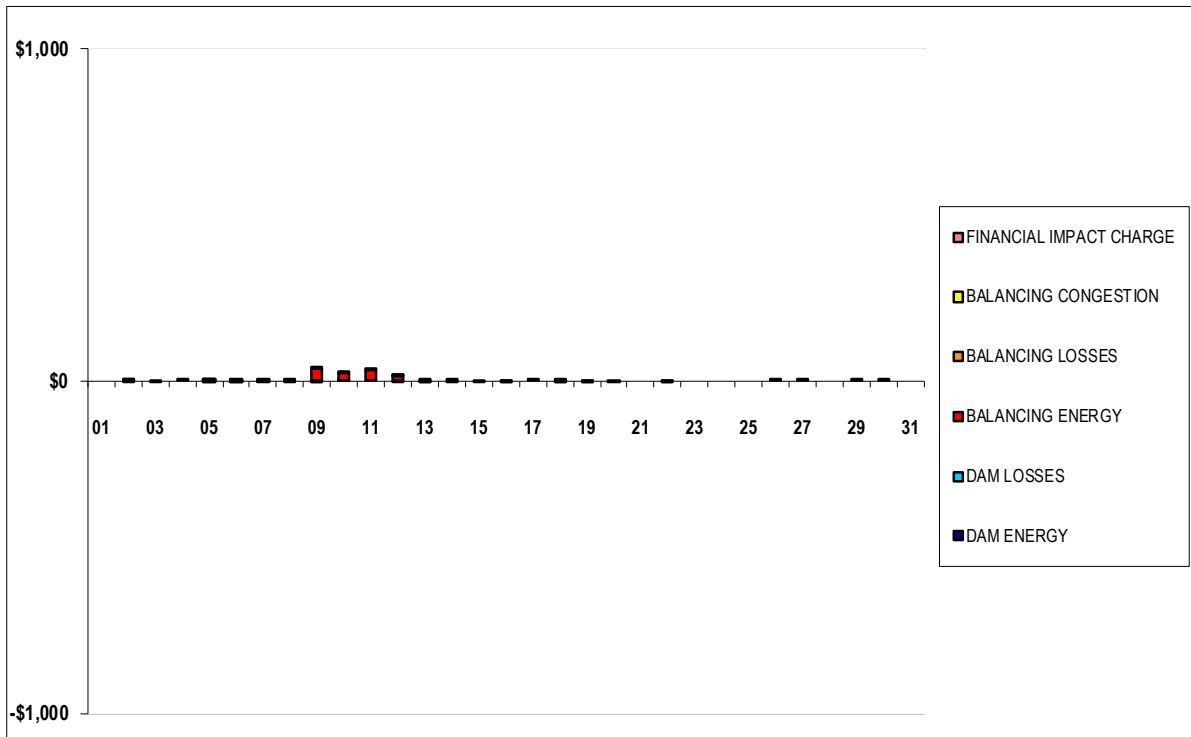
	MONDAY	TUESDAY	WEDNESDAY	THURSDAY	FRIDAY	SATURDAY	SUNDAY
			1	2	3	4	5
DAM NYCA			0	0	0	0	0
DAM NON-NYCA			0	0	0	0	0
DAM WHEELS			0	0	0	0	0
DAM VIRTUAL			0	0	0	0	0
BALANCING NYCA			0	5	0	(0)	0
BALANCING NON-NYCA			0	0	0	0	0
BALANCING WHEELS			0	0	0	0	0
BALANCING VIRTUAL			0	0	0	0	0
UFE/LOSSES			(0)	(5)	(0)	0	(0)
	6	7	8	9	10	11	12
DAM NYCA	0	0	0	0	0	0	0
DAM NON-NYCA	0	0	0	0	0	0	0
DAM WHEELS	0	0	0	0	0	0	0
DAM VIRTUAL	0	0	0	0	0	0	0
BALANCING NYCA	1	0	(0)	0	(0)	(0)	0
BALANCING NON-NYCA	0	0	0	0	0	0	0
BALANCING WHEELS	0	0	0	0	0	0	0
BALANCING VIRTUAL	0	0	0	0	0	0	0
UFE/LOSSES	(1)	0	0	2	1	1	1
	13	14	15	16	17	18	19
DAM NYCA	0	0	0	0	0	0	0
DAM NON-NYCA	0	0	0	0	0	0	0
DAM WHEELS	0	0	0	0	0	0	0
DAM VIRTUAL	0	0	0	0	0	0	0
BALANCING NYCA	(0)	(0)	3	4	(0)	8	0
BALANCING NON-NYCA	0	0	0	0	0	0	0
BALANCING WHEELS	0	0	0	0	0	0	0
BALANCING VIRTUAL	0	0	0	0	0	0	0
UFE/LOSSES	0	0	(3)	(4)	0	(8)	(0)
	20	21	22	23	24	25	26
DAM NYCA	0	0	0	0	0	0	0
DAM NON-NYCA	0	0	0	0	0	0	0
DAM WHEELS	0	0	0	0	0	0	0
DAM VIRTUAL	0	0	0	0	0	0	0
BALANCING NYCA	1	0	0	0	0	0	7
BALANCING NON-NYCA	0	0	0	0	0	0	0
BALANCING WHEELS	0	0	0	0	0	0	0
BALANCING VIRTUAL	0	0	0	0	0	0	0
UFE/LOSSES	(1)	(0)	(0)	(0)	(0)	0	(7)
	27	28	29	30	31		
DAM NYCA	0	0	0	0	0		
DAM NON-NYCA	0	0	0	0	0		
DAM WHEELS	0	0	0	0	0		
DAM VIRTUAL	0	0	0	0	0		
BALANCING NYCA	0	(0)	0	0	0		
BALANCING NON-NYCA	0	0	0	0	0		
BALANCING WHEELS	0	0	0	0	0		
BALANCING VIRTUAL	0	0	0	0	0		
UFE/LOSSES	(0)	0	(0)	(0)	(0)		



SETTLEMENTS REPORT
 March 2023 Close-Out Settlement
 December 7, 2023

Close-Out Settlement – Market Residuals Delta Analysis

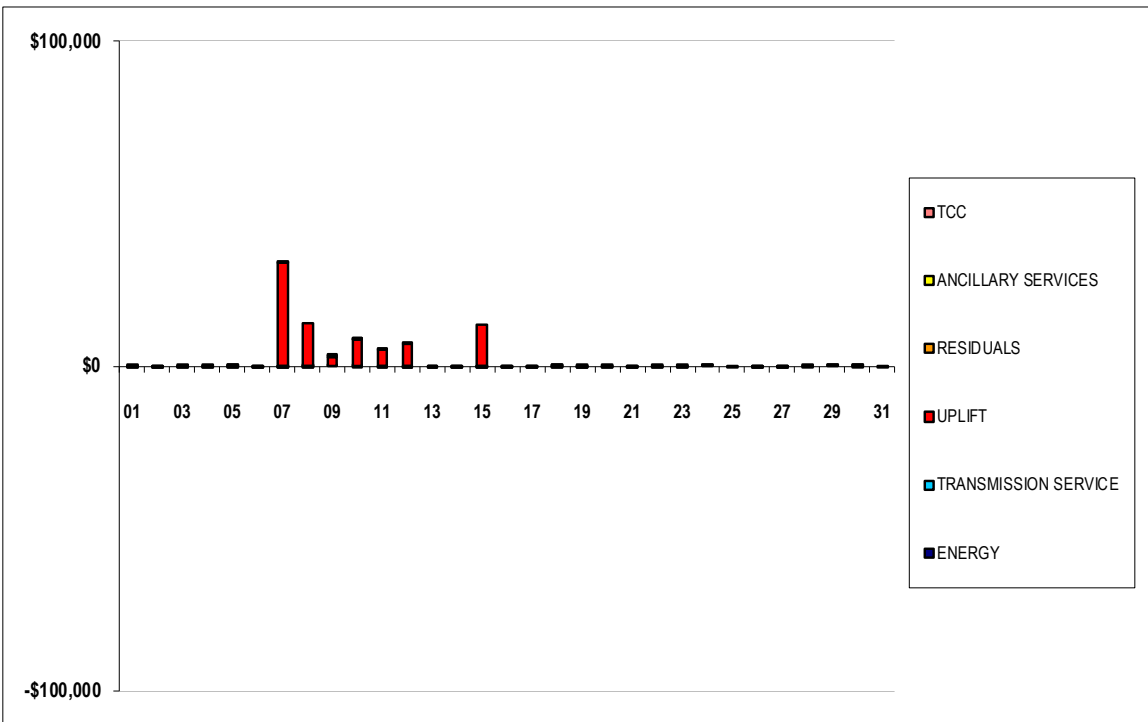
	MONDAY	TUESDAY	WEDNESDAY	THURSDAY	FRIDAY	SATURDAY	SUNDAY
			1	2	3	4	5
DAM ENERGY			\$0.00	\$0.00	\$0.00	\$0.00	\$0.01
DAM LOSSES			\$0.00	\$0.01	(\$0.01)	\$0.01	\$0.01
BALANCING ENERGY			\$0.00	(\$0.01)	\$0.00	\$0.00	\$0.01
BALANCING LOSSES			\$0.00	\$0.01	\$0.00	\$0.00	(\$0.01)
BALANCING CONGESTION			\$0.00	\$0.00	\$0.00	\$0.00	(\$0.01)
FINANCIAL IMPACT CHARGE			\$0.00	\$0.00	\$0.00	\$0.00	\$0.00
	6	7	8	9	10	11	12
DAM ENERGY	(\$0.01)	\$0.00	(\$0.01)	\$0.00	\$0.00	\$0.00	(\$0.01)
DAM LOSSES	(\$0.01)	\$0.00	\$0.00	(\$0.01)	\$0.01	\$0.00	\$0.00
BALANCING ENERGY	\$0.00	\$0.82	\$0.00	\$39.15	\$26.20	\$35.51	\$16.05
BALANCING LOSSES	\$0.00	(\$0.01)	\$0.00	\$0.19	\$0.67	\$0.64	\$0.44
BALANCING CONGESTION	\$0.01	\$0.00	\$0.00	\$0.00	\$0.00	\$0.00	\$0.01
FINANCIAL IMPACT CHARGE	\$0.00	\$0.00	\$0.03	(\$0.06)	\$0.00	\$0.00	\$0.00
	13	14	15	16	17	18	19
DAM ENERGY	\$0.00	\$0.00	\$0.00	\$0.00	\$0.01	\$0.01	(\$0.01)
DAM LOSSES	\$0.01	(\$0.01)	\$0.00	(\$0.01)	\$0.00	(\$0.01)	(\$0.01)
BALANCING ENERGY	\$0.00	\$0.01	\$0.00	\$0.00	\$0.00	(\$0.01)	\$0.00
BALANCING LOSSES	(\$0.01)	\$0.00	(\$0.01)	\$0.00	\$0.00	\$0.00	\$0.00
BALANCING CONGESTION	(\$0.01)	\$0.00	\$0.00	\$0.00	\$0.00	\$0.00	\$0.00
FINANCIAL IMPACT CHARGE	\$0.00	\$0.00	\$0.00	(\$0.02)	\$0.00	\$0.00	\$0.00
	20	21	22	23	24	25	26
DAM ENERGY	\$0.00	\$0.00	\$0.00	\$0.00	\$0.00	\$0.00	\$0.01
DAM LOSSES	(\$0.01)	\$0.00	\$0.00	\$0.00	\$0.00	\$0.00	\$0.00
BALANCING ENERGY	\$0.00	\$0.00	(\$0.01)	\$0.00	\$0.00	\$0.00	\$0.00
BALANCING LOSSES	\$0.00	\$0.00	\$0.00	\$0.00	\$0.00	\$0.00	\$0.00
BALANCING CONGESTION	\$0.00	\$0.00	(\$0.01)	\$0.00	\$0.00	\$0.00	\$0.00
FINANCIAL IMPACT CHARGE	\$0.00	\$0.00	\$0.00	\$0.00	\$0.00	\$0.00	\$0.00
	27	28	29	30	31		
DAM ENERGY	\$0.00	\$0.00	\$0.01	\$0.00	\$0.00		
DAM LOSSES	\$0.01	\$0.00	\$0.00	\$0.00	\$0.00		
BALANCING ENERGY	\$0.00	\$0.00	\$0.00	\$0.00	\$0.00		
BALANCING LOSSES	\$0.00	\$0.00	\$0.00	\$0.00	\$0.00		
BALANCING CONGESTION	\$0.00	\$0.00	\$0.00	\$0.00	\$0.00		
FINANCIAL IMPACT CHARGE	\$0.00	\$0.00	\$0.00	\$0.01	\$0.00		



SETTLEMENTS REPORT
 March 2023 Close-Out Settlement
 December 7, 2023

Close-Out Settlement – Market Costs Delta Analysis

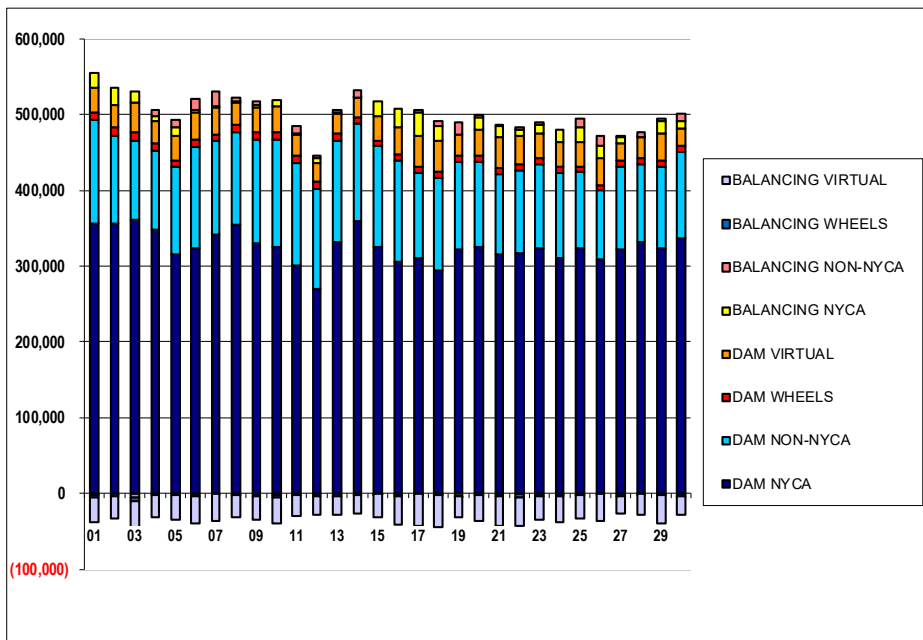
	MONDAY	TUESDAY	WEDNESDAY	THURSDAY	FRIDAY	SATURDAY	SUNDAY
			1	2	3	4	5
ENERGY			\$0.38	(\$0.09)	\$0.13	\$0.10	\$0.10
TRANSMISSION SERVICE			(\$150.17)	(\$95.08)	(\$31.01)	(\$88.61)	(\$61.87)
UPLIFT			(\$0.02)	\$0.00	\$0.01	\$0.00	\$0.02
RESIDUALS			\$0.00	\$0.01	(\$0.01)	\$0.01	\$0.01
ANCILLARY SERVICES			(\$131.73)	(\$79.27)	(\$27.19)	(\$77.75)	(\$54.28)
TCC			\$0.00	\$0.00	\$0.00	\$0.00	\$0.00
	6	7	8	9	10	11	12
ENERGY	(\$0.13)	(\$0.19)	\$0.21	\$0.18	\$0.19	\$0.03	(\$0.34)
TRANSMISSION SERVICE	(\$61.00)	(\$6.96)	(\$20.52)	\$0.02	(\$2.13)	(\$166.75)	(\$116.13)
UPLIFT	\$0.02	\$31,720.35	\$13,234.77	\$2,936.18	\$8,365.38	\$4,886.70	\$6,982.50
RESIDUALS	(\$0.01)	\$0.81	\$0.02	\$39.27	\$26.88	\$36.15	\$16.49
ANCILLARY SERVICES	(\$52.42)	(\$6.12)	(\$16.47)	\$8.49	\$17.56	(\$134.75)	(\$66.97)
TCC	\$0.00	\$0.00	\$0.00	\$0.00	\$0.00	\$0.00	\$0.00
	13	14	15	16	17	18	19
ENERGY	(\$0.21)	(\$0.16)	(\$0.04)	(\$0.03)	(\$0.01)	\$0.11	\$0.48
TRANSMISSION SERVICE	(\$53.80)	(\$33.44)	(\$47.74)	(\$24.32)	(\$30.25)	(\$39.30)	(\$4.41)
UPLIFT	\$0.00	\$0.02	\$12,652.19	\$0.00	\$0.00	\$0.03	\$0.00
RESIDUALS	(\$0.01)	\$0.00	(\$0.01)	(\$0.03)	\$0.01	(\$0.01)	(\$0.02)
ANCILLARY SERVICES	(\$47.22)	(\$29.33)	(\$36.23)	(\$17.61)	(\$26.54)	(\$27.46)	(\$3.85)
TCC	\$0.00	\$0.00	\$0.00	\$0.00	\$0.00	\$0.00	\$0.00
	20	21	22	23	24	25	26
ENERGY	\$0.20	(\$0.06)	\$0.32	\$0.07	\$0.07	(\$0.09)	(\$0.19)
TRANSMISSION SERVICE	(\$3.30)	(\$0.28)	(\$5.98)	(\$18.99)	\$0.03	\$0.00	(\$21.35)
UPLIFT	\$0.00	\$0.00	\$0.00	(\$0.01)	\$0.00	\$0.00	(\$0.01)
RESIDUALS	(\$0.01)	\$0.00	(\$0.02)	\$0.00	\$0.00	\$0.00	\$0.01
ANCILLARY SERVICES	(\$2.25)	(\$0.23)	(\$5.20)	(\$16.65)	\$0.06	\$0.00	(\$12.72)
TCC	\$0.00	\$0.00	\$0.00	\$0.00	\$0.00	\$0.00	\$0.00
	27	28	29	30	31		
ENERGY	(\$0.10)	(\$0.12)	\$0.04	(\$0.22)	(\$0.24)		
TRANSMISSION SERVICE	(\$0.10)	\$0.05	\$0.14	\$0.07	\$0.02		
UPLIFT	\$0.00	\$0.00	\$0.00	\$0.00	\$0.00		
RESIDUALS	\$0.01	\$0.00	\$0.01	\$0.01	\$0.01		
ANCILLARY SERVICES	(\$0.06)	\$0.05	\$0.17	\$0.07	\$0.01		
TCC	\$0.00	\$0.00	\$0.00	\$0.00	\$0.00		



SETTLEMENTS REPORT
March 2023 Close-Out Settlement
December 7, 2023

4-Month Settlement Adjustment – Market Supply Analysis

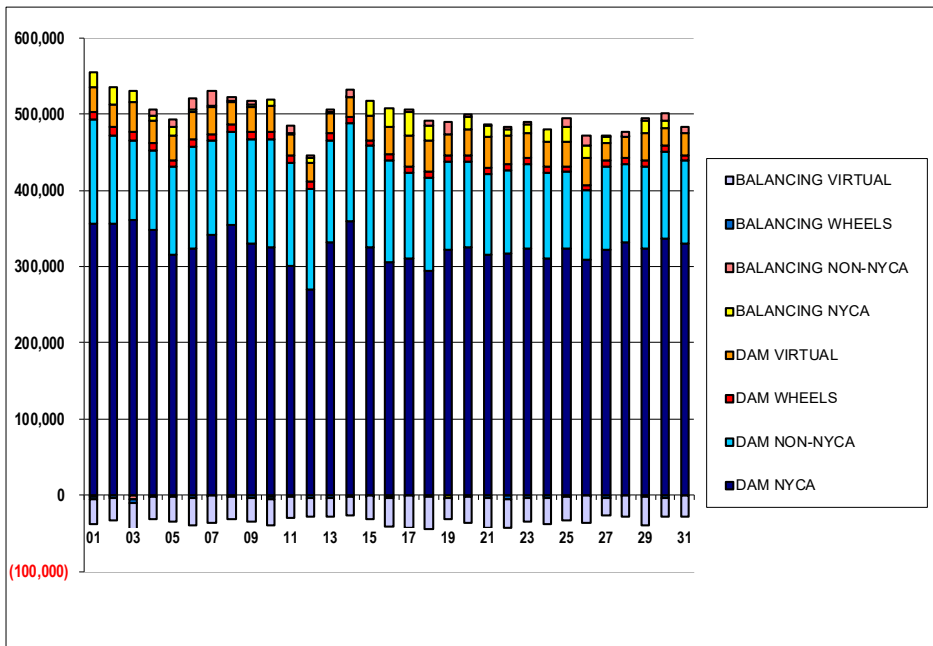
	MONDAY	TUESDAY	WEDNESDAY	THURSDAY	FRIDAY	SATURDAY	SUNDAY
			1	2	3	4	5
DAM NYCA			355,951	356,312	361,680	347,639	315,575
DAM NON-NYCA			136,524	116,376	103,300	105,411	114,999
DAM WHEELS			9,913	10,574	12,682	8,524	9,302
DAM VIRTUAL			32,922	29,261	37,822	29,930	32,249
BALANCING NYCA			20,129	22,487	15,409	7,368	12,014
BALANCING NON-NYCA			(2,467)	(816)	(4,834)	7,856	8,966
BALANCING WHEELS			(2,758)	(3,563)	(5,482)	(1,324)	(2,451)
BALANCING VIRTUAL			(32,922)	(29,261)	(37,822)	(29,930)	(32,249)
	6	7	8	9	10	11	12
DAM NYCA	324,356	341,480	354,954	330,753	325,247	301,439	270,578
DAM NON-NYCA	133,448	124,827	121,772	136,150	141,516	134,999	131,524
DAM WHEELS	9,211	7,414	9,715	10,717	10,616	9,480	9,522
DAM VIRTUAL	35,668	36,173	29,416	31,495	33,562	27,052	23,964
BALANCING NYCA	3,953	1,599	1,345	3,321	9,142	1,576	7,251
BALANCING NON-NYCA	13,900	20,010	4,866	4,904	(2,051)	10,122	3,583
BALANCING WHEELS	(3,752)	(214)	(2,515)	(3,649)	(3,416)	(2,280)	(3,407)
BALANCING VIRTUAL	(35,668)	(36,173)	(29,416)	(31,495)	(33,562)	(27,052)	(23,964)
	13	14	15	16	17	18	19
DAM NYCA	332,541	360,260	325,294	305,370	310,343	294,116	322,341
DAM NON-NYCA	133,328	128,801	133,366	134,309	112,842	122,053	115,691
DAM WHEELS	9,763	8,080	7,666	7,857	7,679	7,883	8,222
DAM VIRTUAL	25,974	24,678	31,111	36,702	41,706	41,556	27,632
BALANCING NYCA	951	206	19,831	24,460	29,727	19,361	(3,134)
BALANCING NON-NYCA	3,686	9,501	(423)	(2,606)	4,407	6,743	15,973
BALANCING WHEELS	(2,915)	(1,730)	(466)	(1,749)	(947)	(2,639)	(1,111)
BALANCING VIRTUAL	(25,974)	(24,678)	(31,111)	(36,702)	(41,706)	(41,556)	(27,632)
	20	21	22	23	24	25	26
DAM NYCA	325,531	315,366	317,047	324,201	311,438	323,695	308,866
DAM NON-NYCA	112,296	106,835	108,789	110,349	111,359	100,707	91,191
DAM WHEELS	7,669	7,995	8,692	7,835	7,750	7,375	7,325
DAM VIRTUAL	34,224	40,005	38,000	32,486	33,660	31,551	35,877
BALANCING NYCA	15,963	15,237	8,175	11,484	15,590	20,100	16,007
BALANCING NON-NYCA	4,544	1,340	1,952	4,101	(518)	11,142	13,581
BALANCING WHEELS	(1,668)	(3,495)	(5,454)	(2,928)	(3,779)	(1,561)	(905)
BALANCING VIRTUAL	(34,224)	(40,005)	(38,000)	(32,486)	(33,660)	(31,551)	(35,877)
	27	28	29	30	31		
DAM NYCA	321,838	331,509	324,366	337,159	329,519		
DAM NON-NYCA	109,694	103,221	107,097	113,122	109,789		
DAM WHEELS	7,725	7,750	7,350	8,476	7,275		
DAM VIRTUAL	23,656	27,481	36,885	23,434	28,540		
BALANCING NYCA	8,020	682	15,414	9,861	21,963		
BALANCING NON-NYCA	1,031	6,971	2,960	9,762	7,557		
BALANCING WHEELS	(3,572)	(1,196)	(2,177)	(4,132)	(292)		
BALANCING VIRTUAL	(23,656)	(27,481)	(36,885)	(23,434)	(28,540)		



SETTLEMENTS REPORT
 March 2023 Close-Out Settlement
 December 7, 2023

Close-Out Settlement – Market Supply Analysis

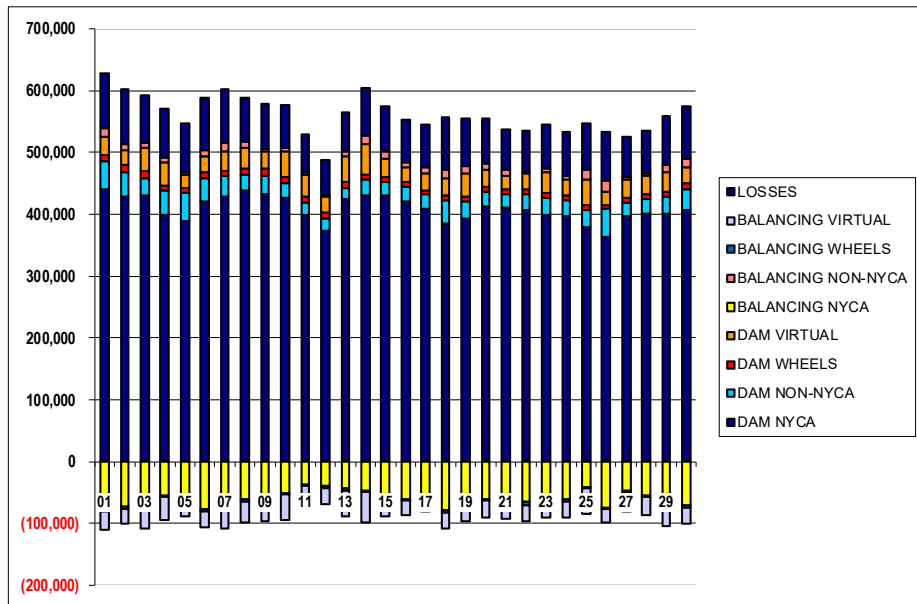
	MONDAY	TUESDAY	WEDNESDAY	THURSDAY	FRIDAY	SATURDAY	SUNDAY
			1	2	3	4	5
DAM NYCA			355,951	356,312	361,680	347,639	315,575
DAM NON-NYCA			136,524	116,376	103,300	105,411	114,999
DAM WHEELS			9,913	10,574	12,682	8,524	9,302
DAM VIRTUAL			32,922	29,261	37,822	29,930	32,249
BALANCING NYCA			20,129	22,487	15,409	7,368	12,014
BALANCING NON-NYCA			(2,467)	(816)	(4,834)	7,856	8,966
BALANCING WHEELS			(2,758)	(3,563)	(5,482)	(1,324)	(2,451)
BALANCING VIRTUAL			(32,922)	(29,261)	(37,822)	(29,930)	(32,249)
	6	7	8	9	10	11	12
DAM NYCA	324,356	341,480	354,954	330,753	325,247	301,439	270,578
DAM NON-NYCA	133,448	124,827	121,772	136,150	141,516	134,999	131,524
DAM WHEELS	9,211	7,414	9,715	10,717	10,616	9,480	9,522
DAM VIRTUAL	35,668	36,173	29,416	31,495	33,562	27,052	23,964
BALANCING NYCA	3,953	1,600	1,345	3,322	9,143	1,577	7,252
BALANCING NON-NYCA	13,900	20,010	4,866	4,904	(2,051)	10,122	3,583
BALANCING WHEELS	(3,752)	(214)	(2,515)	(3,649)	(3,416)	(2,280)	(3,407)
BALANCING VIRTUAL	(35,668)	(36,173)	(29,416)	(31,495)	(33,562)	(27,052)	(23,964)
	13	14	15	16	17	18	19
DAM NYCA	332,541	360,260	325,294	305,370	310,343	294,116	322,341
DAM NON-NYCA	133,328	128,801	133,366	134,309	112,842	122,053	115,691
DAM WHEELS	9,763	8,080	7,666	7,857	7,679	7,883	8,222
DAM VIRTUAL	25,974	24,678	31,111	36,702	41,706	41,556	27,632
BALANCING NYCA	951	206	19,831	24,460	29,727	19,361	(3,134)
BALANCING NON-NYCA	3,686	9,501	(423)	(2,606)	4,407	6,743	15,973
BALANCING WHEELS	(2,915)	(1,730)	(466)	(1,749)	(947)	(2,639)	(1,111)
BALANCING VIRTUAL	(25,974)	(24,678)	(31,111)	(36,702)	(41,706)	(41,556)	(27,632)
	20	21	22	23	24	25	26
DAM NYCA	325,531	315,366	317,047	324,201	311,438	323,695	308,866
DAM NON-NYCA	112,296	106,835	108,789	110,349	111,359	100,707	91,191
DAM WHEELS	7,669	7,995	8,692	7,835	7,750	7,375	7,325
DAM VIRTUAL	34,224	40,005	38,000	32,486	33,660	31,551	35,877
BALANCING NYCA	15,963	15,237	8,175	11,484	15,590	20,100	16,007
BALANCING NON-NYCA	4,544	1,340	1,952	4,101	(518)	11,142	13,581
BALANCING WHEELS	(1,668)	(3,495)	(5,454)	(2,928)	(3,779)	(1,561)	(905)
BALANCING VIRTUAL	(34,224)	(40,005)	(38,000)	(32,486)	(33,660)	(31,551)	(35,877)
	27	28	29	30	31		
DAM NYCA	321,838	331,509	324,366	337,159	329,519		
DAM NON-NYCA	109,694	103,221	107,097	113,122	109,789		
DAM WHEELS	7,725	7,750	7,350	8,476	7,275		
DAM VIRTUAL	23,656	27,481	36,885	23,434	28,540		
BALANCING NYCA	8,020	682	15,414	9,861	21,963		
BALANCING NON-NYCA	1,031	6,971	2,960	9,762	7,557		
BALANCING WHEELS	(3,572)	(1,196)	(2,177)	(4,132)	(292)		
BALANCING VIRTUAL	(23,656)	(27,481)	(36,885)	(23,434)	(28,540)		



SETTLEMENTS REPORT
March 2023 Close-Out Settlement
December 7, 2023

4-Month Settlement Adjustment – Market Withdrawals Analysis

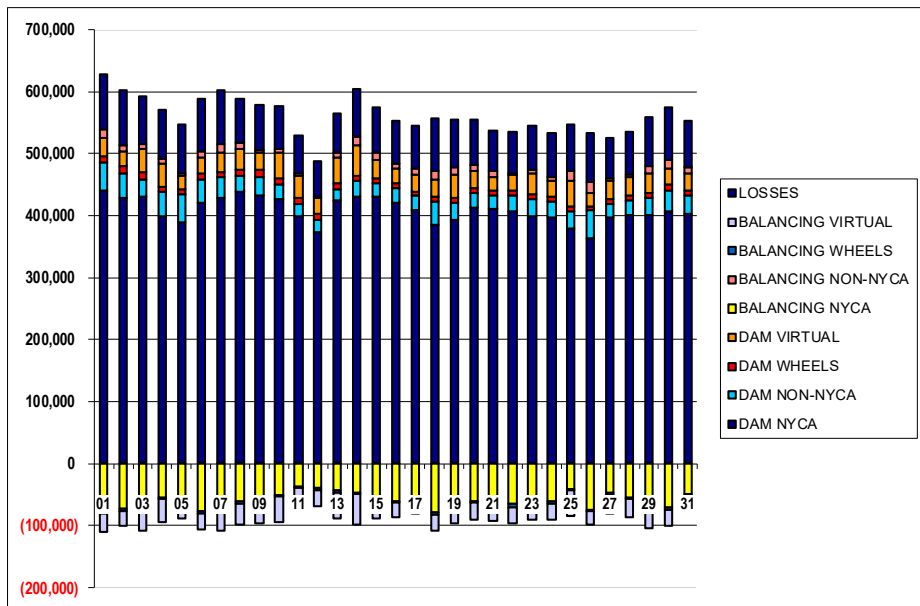
	MONDAY	TUESDAY	WEDNESDAY	THURSDAY	FRIDAY	SATURDAY	SUNDAY
			1	2	3	4	5
DAM NYCA			440,983	428,940	431,126	398,299	388,593
DAM NON-NYCA			45,236	39,953	26,578	39,261	45,056
DAM WHEELS			9,913	10,574	12,682	8,524	9,302
DAM VIRTUAL			29,575	24,698	36,689	37,287	21,473
BALANCING NYCA			(77,121)	(71,879)	(66,635)	(55,637)	(64,064)
BALANCING NON-NYCA			12,528	9,577	7,733	7,825	4,007
BALANCING WHEELS			(2,758)	(3,563)	(5,482)	(1,324)	(2,451)
BALANCING VIRTUAL			(29,575)	(24,698)	(36,689)	(37,287)	(21,473)
UFE/LOSSES			88,521	87,768	76,753	78,527	77,963
	6	7	8	9	10	11	12
DAM NYCA	420,136	427,773	439,072	432,355	426,719	398,052	372,959
DAM NON-NYCA	38,345	34,961	24,196	29,911	23,470	21,119	20,299
DAM WHEELS	9,211	7,414	9,715	10,717	10,616	9,480	9,522
DAM VIRTUAL	26,751	31,555	33,606	27,682	41,505	35,929	25,243
BALANCING NYCA	(75,916)	(76,106)	(61,220)	(65,535)	(49,995)	(36,005)	(39,746)
BALANCING NON-NYCA	8,158	13,859	9,853	5,071	4,458	3,894	3,233
BALANCING WHEELS	(3,752)	(214)	(2,515)	(3,649)	(3,416)	(2,280)	(3,407)
BALANCING VIRTUAL	(26,751)	(31,555)	(33,606)	(27,682)	(41,505)	(35,929)	(25,243)
UFE/LOSSES	84,933	87,429	71,037	73,327	69,202	61,075	56,190
	13	14	15	16	17	18	19
DAM NYCA	424,854	430,284	431,055	420,806	408,597	385,058	392,145
DAM NON-NYCA	18,004	26,379	20,945	23,972	23,027	37,874	28,691
DAM WHEELS	9,763	8,080	7,666	7,857	7,679	7,883	8,222
DAM VIRTUAL	41,292	49,521	30,119	24,080	26,609	27,231	35,975
BALANCING NYCA	(43,473)	(46,904)	(58,403)	(60,045)	(53,290)	(79,074)	(58,865)
BALANCING NON-NYCA	7,163	11,877	12,365	7,892	9,296	13,410	12,232
BALANCING WHEELS	(2,915)	(1,730)	(466)	(1,749)	(947)	(2,639)	(1,111)
BALANCING VIRTUAL	(41,292)	(49,521)	(30,119)	(24,080)	(26,609)	(27,231)	(35,975)
UFE/LOSSES	63,959	77,133	72,106	68,909	69,689	85,005	76,669
	20	21	22	23	24	25	26
DAM NYCA	411,919	411,461	406,466	399,029	396,157	378,884	363,078
DAM NON-NYCA	24,094	20,814	25,215	27,640	26,048	28,277	45,157
DAM WHEELS	7,669	7,995	8,692	7,835	7,750	7,375	7,325
DAM VIRTUAL	28,104	22,520	25,005	33,104	26,857	41,767	21,451
BALANCING NYCA	(61,282)	(66,822)	(65,352)	(54,593)	(60,190)	(41,838)	(75,397)
BALANCING NON-NYCA	10,470	8,102	3,365	6,627	5,970	15,536	16,320
BALANCING WHEELS	(1,668)	(3,495)	(5,454)	(2,928)	(3,779)	(1,561)	(905)
BALANCING VIRTUAL	(28,104)	(22,520)	(25,005)	(33,104)	(26,857)	(41,767)	(21,451)
UFE/LOSSES	73,133	65,221	66,268	71,432	69,885	74,786	80,487
	27	28	29	30	31		
DAM NYCA	396,393	400,972	400,292	406,671	402,623		
DAM NON-NYCA	22,887	24,267	27,992	34,213	30,343		
DAM WHEELS	7,725	7,750	7,350	8,476	7,275		
DAM VIRTUAL	29,130	29,574	32,216	25,598	28,142		
BALANCING NYCA	(47,470)	(54,536)	(69,707)	(70,390)	(48,463)		
BALANCING NON-NYCA	4,429	4,347	12,445	15,638	9,753		
BALANCING WHEELS	(3,572)	(1,196)	(2,177)	(4,132)	(292)		
BALANCING VIRTUAL	(29,130)	(29,574)	(32,216)	(25,598)	(28,142)		
UFE/LOSSES	64,344	67,334	78,815	83,772	74,573		



SETTLEMENTS REPORT
March 2023 Close-Out Settlement
December 7, 2023

Close-Out Settlement – Market Withdrawals Analysis

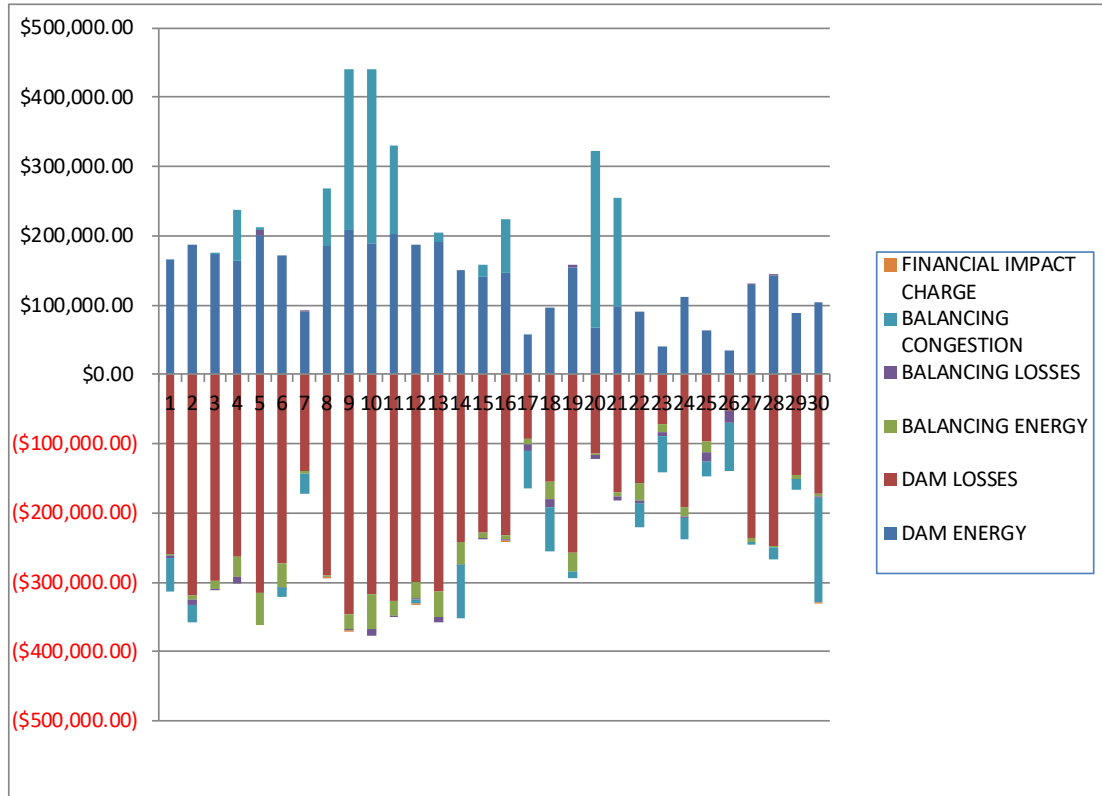
	MONDAY	TUESDAY	WEDNESDAY	THURSDAY	FRIDAY	SATURDAY	SUNDAY
			1	2	3	4	5
DAM NYCA			440,983	428,940	431,126	398,299	388,593
DAM NON-NYCA			45,236	39,953	26,578	39,261	45,056
DAM WHEELS			9,913	10,574	12,682	8,524	9,302
DAM VIRTUAL			29,575	24,698	36,689	37,287	21,473
BALANCING NYCA			(77,121)	(71,874)	(66,635)	(55,637)	(64,064)
BALANCING NON-NYCA			12,528	9,577	7,733	7,825	4,007
BALANCING WHEELS			(2,758)	(3,563)	(5,482)	(1,324)	(2,451)
BALANCING VIRTUAL			(29,575)	(24,698)	(36,689)	(37,287)	(21,473)
UFELOSSES			88,521	87,763	76,753	78,527	77,963
	6	7	8	9	10	11	12
DAM NYCA	420,136	427,773	439,072	432,355	426,719	398,052	372,959
DAM NON-NYCA	38,345	34,961	24,196	29,911	23,470	21,119	20,299
DAM WHEELS	9,211	7,414	9,715	10,717	10,616	9,480	9,522
DAM VIRTUAL	26,751	31,555	33,606	27,682	41,505	35,929	25,243
BALANCING NYCA	(75,915)	(76,106)	(61,220)	(65,535)	(49,995)	(36,005)	(39,746)
BALANCING NON-NYCA	8,158	13,859	9,853	5,071	4,458	3,894	3,233
BALANCING WHEELS	(3,752)	(214)	(2,515)	(3,649)	(3,416)	(2,280)	(3,407)
BALANCING VIRTUAL	(26,751)	(31,555)	(33,606)	(27,682)	(41,505)	(35,929)	(25,243)
UFELOSSES	84,932	87,430	71,037	73,328	69,203	61,077	56,191
	13	14	15	16	17	18	19
DAM NYCA	424,854	430,284	431,055	420,806	408,597	385,058	392,145
DAM NON-NYCA	18,004	26,379	20,945	23,972	23,027	37,874	28,691
DAM WHEELS	9,763	8,080	7,666	7,857	7,679	7,883	8,222
DAM VIRTUAL	41,292	49,521	30,119	24,080	26,609	27,231	35,975
BALANCING NYCA	(43,473)	(46,904)	(58,400)	(60,040)	(53,290)	(79,066)	(58,865)
BALANCING NON-NYCA	7,163	11,877	12,365	7,892	9,296	13,410	12,232
BALANCING WHEELS	(2,915)	(1,730)	(466)	(1,749)	(947)	(2,639)	(1,111)
BALANCING VIRTUAL	(41,292)	(49,521)	(30,119)	(24,080)	(26,609)	(27,231)	(35,975)
UFELOSSES	63,959	77,133	72,103	68,904	69,689	84,997	76,669
	20	21	22	23	24	25	26
DAM NYCA	411,919	411,461	406,466	399,029	396,157	378,884	363,078
DAM NON-NYCA	24,094	20,814	25,215	27,640	26,048	28,277	45,157
DAM WHEELS	7,669	7,995	8,692	7,835	7,750	7,375	7,325
DAM VIRTUAL	28,104	22,520	25,005	33,104	26,857	41,767	21,451
BALANCING NYCA	(61,281)	(66,822)	(65,352)	(54,593)	(60,190)	(41,838)	(75,390)
BALANCING NON-NYCA	10,470	8,102	3,365	6,627	5,970	15,536	16,320
BALANCING WHEELS	(1,668)	(3,495)	(5,454)	(2,928)	(3,779)	(1,561)	(905)
BALANCING VIRTUAL	(28,104)	(22,520)	(25,005)	(33,104)	(26,857)	(41,767)	(21,451)
UFELOSSES	73,133	65,221	66,268	71,432	69,885	74,786	80,480
	27	28	29	30	31		
DAM NYCA	396,393	400,972	400,292	406,671	402,623		
DAM NON-NYCA	22,887	24,267	27,992	34,213	30,343		
DAM WHEELS	7,725	7,750	7,350	8,476	7,275		
DAM VIRTUAL	29,130	29,574	32,216	25,598	28,142		
BALANCING NYCA	(47,470)	(54,536)	(69,707)	(70,390)	(48,463)		
BALANCING NON-NYCA	4,429	4,347	12,445	15,638	9,753		
BALANCING WHEELS	(3,572)	(1,196)	(2,177)	(4,132)	(292)		
BALANCING VIRTUAL	(29,130)	(29,574)	(32,216)	(25,598)	(28,142)		
UFELOSSES	64,344	67,334	78,815	83,771	74,573		



SETTLEMENTS REPORT
March 2023 Close-Out Settlement
December 7, 2023

4-Month Settlement Adjustment – Market Residuals Analysis

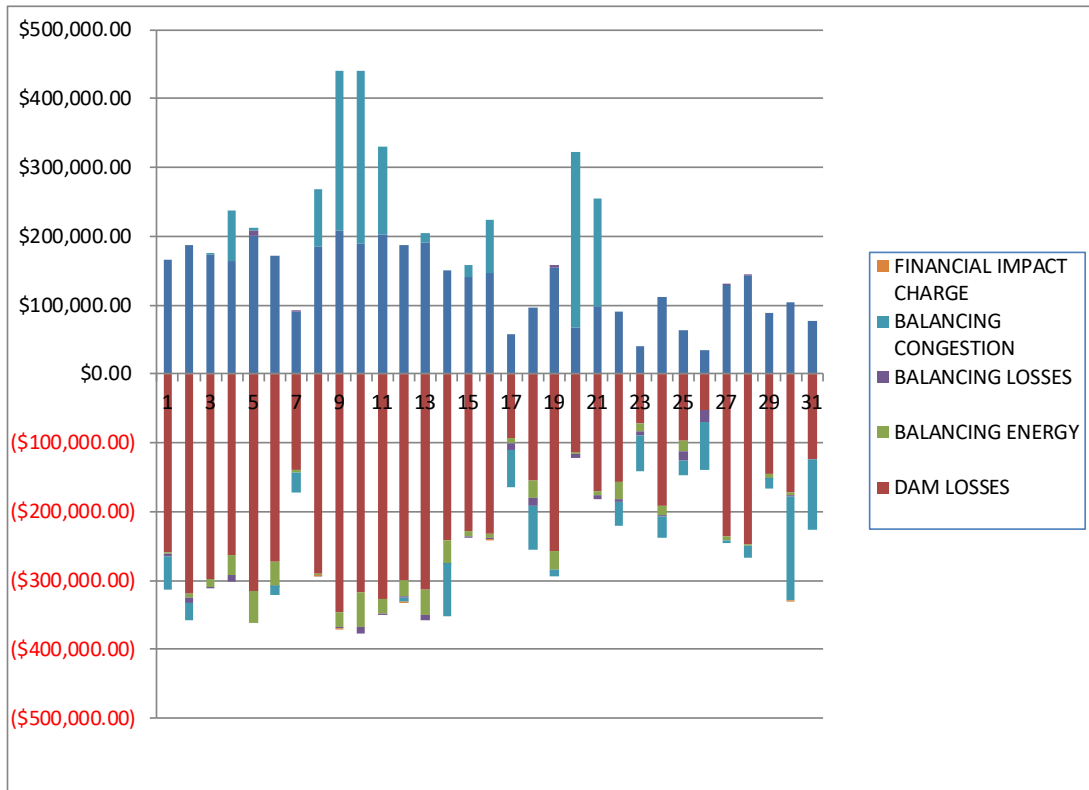
	MONDAY	TUESDAY	WEDNESDAY	THURSDAY	FRIDAY	SATURDAY	SUNDAY
			1	2	3	4	5
DAM ENERGY			\$165,786.78	\$186,363.15	\$172,770.44	\$163,476.99	\$200,135.45
DAM LOSSES			(\$258,879.41)	(\$318,672.42)	(\$298,370.56)	(\$263,123.78)	(\$314,857.03)
BALANCING ENERGY			(\$3,297.37)	(\$6,904.63)	(\$10,705.73)	(\$28,486.94)	(\$47,165.19)
BALANCING LOSSES			(\$3,242.40)	(\$7,523.82)	(\$3.62)	(\$10,136.19)	\$8,283.46
BALANCING CONGESTION			(\$47,142.19)	(\$24,695.81)	\$1,160.41	\$74,553.28	\$4,589.54
FINACIAL IMPACT CHARGE			\$0.00	\$0.00	\$0.00	\$0.00	\$0.00
	6	7	8	9	10	11	12
DAM ENERGY	\$171,770.83	\$91,172.75	\$184,844.65	\$208,084.21	\$189,843.38	\$201,796.40	\$186,510.89
DAM LOSSES	(\$273,000.49)	(\$139,553.92)	(\$289,599.59)	(\$346,686.40)	(\$317,166.70)	(\$327,443.33)	(\$299,057.39)
BALANCING ENERGY	(\$34,386.86)	(\$4,246.10)	(\$1,796.76)	(\$19,995.13)	(\$50,303.90)	(\$20,019.47)	(\$23,543.62)
BALANCING LOSSES	(\$1,098.92)	\$360.62	(\$1,350.22)	(\$3,492.73)	(\$9,894.73)	(\$220.76)	(\$1,865.58)
BALANCING CONGESTION	(\$13,382.60)	(\$28,881.37)	\$83,509.63	\$231,773.45	\$250,139.62	\$128,362.71	(\$5,974.42)
FINACIAL IMPACT CHARGE	\$0.00	\$0.00	(\$175.20)	(\$633.60)	\$0.00	\$0.00	(\$11.95)
	13	14	15	16	17	18	19
DAM ENERGY	\$191,847.65	\$150,862.09	\$140,275.91	\$147,319.97	\$57,785.80	\$95,798.52	\$155,039.14
DAM LOSSES	(\$313,807.79)	(\$242,511.87)	(\$227,878.03)	(\$232,825.66)	(\$94,034.27)	(\$154,204.21)	(\$256,854.88)
BALANCING ENERGY	(\$36,739.76)	(\$31,388.46)	(\$7,425.42)	(\$4,371.50)	(\$6,173.25)	(\$25,654.44)	(\$27,694.95)
BALANCING LOSSES	(\$6,530.12)	(\$1,237.42)	(\$3,297.64)	(\$3,138.47)	(\$10,827.57)	(\$11,070.24)	\$3,047.90
BALANCING CONGESTION	\$12,917.71	(\$77,101.78)	\$18,073.72	\$75,620.57	(\$54,472.52)	(\$64,421.82)	(\$10,052.70)
FINACIAL IMPACT CHARGE	\$0.00	\$0.00	\$0.00	(\$436.06)	\$0.00	\$0.00	\$0.00
	20	21	22	23	24	25	26
DAM ENERGY	\$66,969.91	\$98,751.98	\$89,526.85	\$40,305.22	\$111,778.21	\$62,558.17	\$34,285.84
DAM LOSSES	(\$114,152.20)	(\$171,232.02)	(\$156,719.33)	(\$71,817.23)	(\$192,620.50)	(\$96,534.81)	(\$52,601.89)
BALANCING ENERGY	(\$1,462.46)	(\$4,828.33)	(\$24,967.48)	(\$11,008.33)	(\$12,299.49)	(\$15,074.81)	(\$553.86)
BALANCING LOSSES	(\$6,881.99)	(\$6,027.32)	(\$3,960.31)	(\$6,434.29)	(\$2,333.49)	(\$13,517.60)	(\$16,735.93)
BALANCING CONGESTION	\$255,428.89	\$156,704.44	(\$34,528.16)	(\$53,100.95)	(\$31,756.02)	(\$22,274.33)	(\$69,431.60)
FINACIAL IMPACT CHARGE	\$0.00	\$0.00	\$0.00	\$0.00	\$0.00	\$0.00	\$0.00
	27	28	29	30	31		
DAM ENERGY	\$129,971.41	\$142,794.62	\$88,223.70	\$104,482.64	\$77,282.73		
DAM LOSSES	(\$236,611.63)	(\$248,033.49)	(\$145,979.85)	(\$172,453.95)	(\$123,495.38)		
BALANCING ENERGY	(\$4,414.74)	(\$2,575.72)	(\$4,381.24)	(\$4,267.54)	(\$8,349.89)		
BALANCING LOSSES	\$1,218.10	\$719.70	(\$1,565.51)	(\$2,218.39)	(\$4,626.89)		
BALANCING CONGESTION	(\$5,377.68)	(\$16,948.11)	(\$15,078.03)	(\$150,708.05)	(\$103,097.32)		
FINACIAL IMPACT CHARGE	\$0.00	\$0.00	\$0.00	(\$18.90)	\$0.00		



SETTLEMENTS REPORT
March 2023 Close-Out Settlement
December 7, 2023

Close-Out Settlement – Market Residuals Analysis

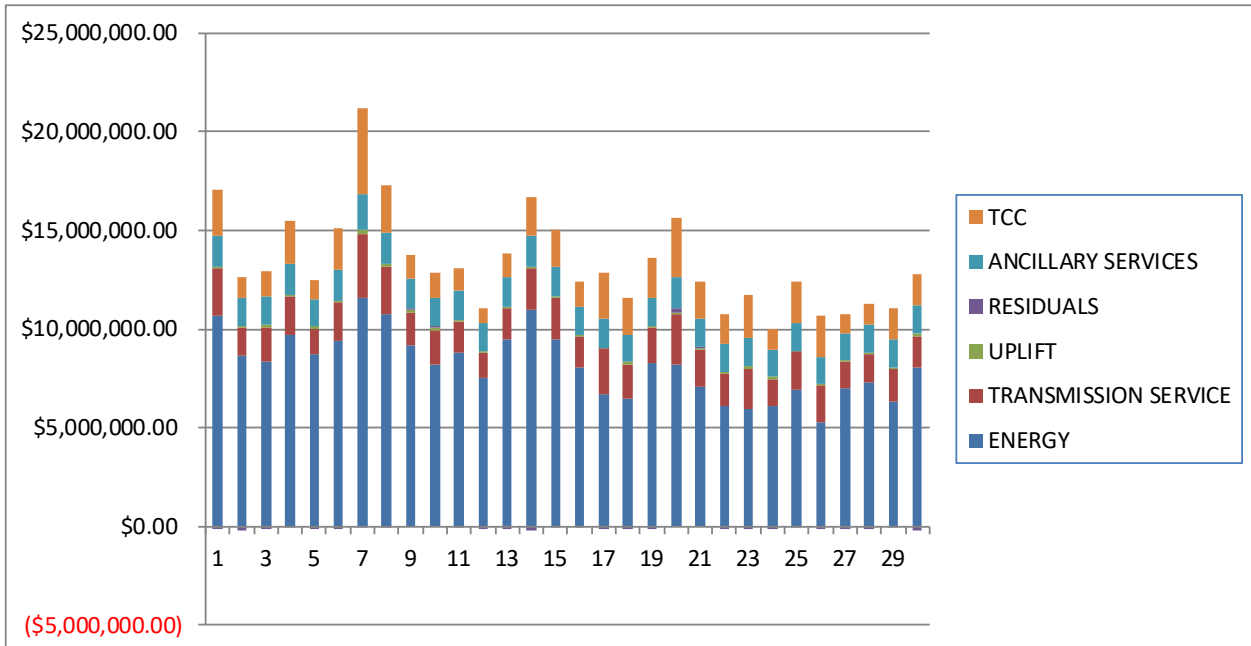
	MONDAY	TUESDAY	WEDNESDAY	THURSDAY	FRIDAY	SATURDAY	SUNDAY
			1	2	3	4	5
DAM ENERGY			\$165,786.78	\$186,363.15	\$172,770.44	\$163,476.99	\$200,135.46
DAM LOSSES			(\$258,879.41)	(\$318,672.41)	(\$298,370.57)	(\$263,123.77)	(\$314,857.02)
BALANCING ENERGY			(\$3,297.37)	(\$6,904.64)	(\$10,705.73)	(\$28,486.94)	(\$47,165.18)
BALANCING LOSSES			(\$3,242.40)	(\$7,523.81)	(\$3.62)	(\$10,136.19)	\$8,283.45
BALANCING CONGESTION			(\$47,142.19)	(\$24,695.81)	\$1,160.41	\$74,553.28	\$4,589.53
FINANCIAL IMPACT CHARGE			\$0.00	\$0.00	\$0.00	\$0.00	\$0.00
	6	7	8	9	10	11	12
DAM ENERGY	\$171,770.82	\$91,172.75	\$184,844.64	\$208,084.21	\$189,843.38	\$201,796.40	\$186,510.88
DAM LOSSES	(\$273,000.50)	(\$139,553.92)	(\$289,599.59)	(\$346,686.41)	(\$317,166.69)	(\$327,443.33)	(\$299,057.39)
BALANCING ENERGY	(\$34,386.86)	(\$4,245.28)	(\$1,796.76)	(\$19,955.98)	(\$50,277.70)	(\$19,983.96)	(\$23,527.57)
BALANCING LOSSES	(\$1,098.92)	\$360.61	(\$1,350.22)	(\$3,492.54)	(\$9,894.06)	(\$220.12)	(\$1,865.14)
BALANCING CONGESTION	(\$13,382.59)	(\$28,881.37)	\$83,509.63	\$231,773.45	\$250,139.62	\$128,362.71	(\$5,974.41)
FINANCIAL IMPACT CHARGE	\$0.00	\$0.00	(\$175.17)	(\$633.66)	\$0.00	\$0.00	(\$11.95)
	13	14	15	16	17	18	19
DAM ENERGY	\$191,847.65	\$150,862.09	\$140,275.91	\$147,319.97	\$57,785.81	\$95,798.53	\$155,039.13
DAM LOSSES	(\$313,807.78)	(\$242,511.88)	(\$227,878.03)	(\$232,825.67)	(\$94,034.27)	(\$154,204.22)	(\$256,854.89)
BALANCING ENERGY	(\$36,739.76)	(\$31,388.45)	(\$7,425.42)	(\$4,371.50)	(\$6,173.25)	(\$25,654.45)	(\$27,694.95)
BALANCING LOSSES	(\$6,530.13)	(\$1,237.42)	(\$3,297.65)	(\$3,138.47)	(\$10,827.57)	(\$11,070.24)	\$3,047.90
BALANCING CONGESTION	\$12,917.70	(\$77,101.78)	\$18,073.72	\$75,620.57	(\$54,472.52)	(\$64,421.82)	(\$10,052.70)
FINANCIAL IMPACT CHARGE	\$0.00	\$0.00	\$0.00	(\$436.08)	\$0.00	\$0.00	\$0.00
	20	21	22	23	24	25	26
DAM ENERGY	\$66,969.91	\$98,751.98	\$89,526.85	\$40,305.22	\$111,778.21	\$62,558.17	\$34,285.85
DAM LOSSES	(\$114,152.21)	(\$171,232.02)	(\$156,719.33)	(\$71,817.23)	(\$192,620.50)	(\$96,534.81)	(\$52,601.89)
BALANCING ENERGY	(\$1,462.46)	(\$4,828.33)	(\$24,967.49)	(\$11,008.33)	(\$12,299.49)	(\$15,074.81)	(\$553.86)
BALANCING LOSSES	(\$6,881.99)	(\$6,027.32)	(\$3,960.31)	(\$6,434.29)	(\$2,333.49)	(\$13,517.60)	(\$16,735.93)
BALANCING CONGESTION	\$255,428.89	\$156,704.44	(\$34,528.17)	(\$53,100.95)	(\$31,756.02)	(\$22,274.33)	(\$69,431.60)
FINANCIAL IMPACT CHARGE	\$0.00	\$0.00	\$0.00	\$0.00	\$0.00	\$0.00	\$0.00
	27	28	29	30	31		
DAM ENERGY	\$129,971.41	\$142,794.62	\$88,223.71	\$104,482.64	\$77,282.73		
DAM LOSSES	(\$236,611.62)	(\$248,033.49)	(\$145,979.85)	(\$172,453.95)	(\$123,495.38)		
BALANCING ENERGY	(\$4,414.74)	(\$2,575.72)	(\$4,381.24)	(\$4,267.54)	(\$8,349.89)		
BALANCING LOSSES	\$1,218.10	\$719.70	(\$1,565.51)	(\$2,218.39)	(\$4,626.89)		
BALANCING CONGESTION	(\$5,377.68)	(\$16,948.11)	(\$15,078.03)	(\$150,708.05)	(\$103,097.32)		
FINANCIAL IMPACT CHARGE	\$0.00	\$0.00	\$0.00	(\$18.89)	\$0.00		



SETTLEMENTS REPORT
 March 2023 Close-Out Settlement
 December 7, 2023

4-Month Settlement Adjustment – Market Costs Analysis

	MONDAY	TUESDAY	WEDNESDAY	THURSDAY	FRIDAY	SATURDAY	SUNDAY
			1	2	3	4	5
ENERGY			\$10,655,886.90	\$8,613,213.37	\$8,373,778.15	\$9,673,320.57	\$8,734,647.53
TRANSMISSION SERVICE			\$2,383,178.16	\$1,440,591.64	\$1,738,632.02	\$1,971,672.20	\$1,294,344.42
UPLIFT			\$95,122.48	\$80,761.28	\$79,560.53	\$78,928.01	\$83,912.62
RESIDUALS			(\$146,774.59)	(\$171,433.53)	(\$135,149.06)	(\$63,716.64)	(\$149,013.77)
ANCILLARY SERVICES			\$1,590,671.06	\$1,468,399.42	\$1,464,000.54	\$1,557,911.03	\$1,411,936.86
TCC			\$2,318,377.79	\$1,057,742.22	\$1,291,441.32	\$2,211,997.71	\$968,885.08
	6	7	8	9	10	11	12
ENERGY	\$9,399,634.98	\$11,576,281.32	\$10,752,025.16	\$9,200,330.57	\$8,232,687.36	\$8,837,280.79	\$7,549,272.64
TRANSMISSION SERVICE	\$1,913,869.76	\$3,243,825.88	\$2,388,810.68	\$1,603,335.81	\$1,665,156.23	\$1,523,652.74	\$1,231,316.57
UPLIFT	\$132,231.97	\$180,777.18	\$122,390.46	\$147,250.80	\$184,019.28	\$73,521.34	\$87,120.80
RESIDUALS	(\$150,098.04)	(\$81,148.02)	(\$24,567.49)	\$69,049.80	\$62,617.67	(\$17,524.45)	(\$143,942.07)
ANCILLARY SERVICES	\$1,521,060.22	\$1,829,080.69	\$1,632,775.17	\$1,521,385.49	\$1,442,628.84	\$1,500,222.89	\$1,459,179.10
TCC	\$2,147,054.25	\$4,364,214.24	\$2,368,310.88	\$1,204,725.03	\$1,262,140.39	\$1,112,472.47	\$737,962.45
	13	14	15	16	17	18	19
ENERGY	\$9,453,136.42	\$10,949,488.50	\$9,510,593.37	\$8,021,778.99	\$6,719,885.96	\$6,469,960.80	\$8,240,666.89
TRANSMISSION SERVICE	\$1,581,332.34	\$2,154,046.78	\$2,096,346.75	\$1,620,504.36	\$2,267,775.35	\$1,751,298.37	\$1,828,931.14
UPLIFT	\$90,664.94	\$53,763.89	\$61,950.73	\$66,878.14	\$72,789.51	\$106,361.68	\$68,855.50
RESIDUALS	(\$152,312.31)	(\$201,377.44)	(\$80,251.46)	(\$17,831.15)	(\$107,721.81)	(\$159,552.19)	(\$136,515.49)
ANCILLARY SERVICES	\$1,529,431.49	\$1,573,123.25	\$1,486,117.14	\$1,424,158.84	\$1,459,434.70	\$1,362,504.09	\$1,442,955.78
TCC	\$1,152,272.25	\$1,943,095.62	\$1,906,564.66	\$1,275,733.41	\$2,363,503.26	\$1,900,000.12	\$1,988,352.99
	20	21	22	23	24	25	26
ENERGY	\$8,203,668.41	\$7,049,547.30	\$6,063,017.11	\$5,968,453.25	\$6,090,441.89	\$6,903,282.86	\$5,290,482.19
TRANSMISSION SERVICE	\$2,570,536.63	\$1,880,953.28	\$1,714,753.60	\$2,043,545.42	\$1,386,550.80	\$1,942,144.88	\$1,859,007.43
UPLIFT	\$67,677.92	\$77,604.54	\$57,554.57	\$91,870.83	\$86,157.84	\$53,051.99	\$73,244.71
RESIDUALS	\$199,902.15	\$73,368.75	(\$130,648.43)	(\$102,055.58)	(\$127,231.29)	(\$84,843.38)	(\$105,037.44)
ANCILLARY SERVICES	\$1,557,483.40	\$1,458,535.92	\$1,378,893.65	\$1,420,722.11	\$1,361,190.20	\$1,428,914.34	\$1,358,713.23
TCC	\$2,996,214.78	\$1,858,396.76	\$1,498,549.84	\$2,193,122.74	\$1,074,276.06	\$2,054,124.75	\$2,130,298.76
	27	28	29	30	31		
ENERGY	\$6,968,052.91	\$7,323,153.02	\$6,288,854.16	\$8,025,620.88	\$7,159,544.46		
TRANSMISSION SERVICE	\$1,359,426.00	\$1,433,890.80	\$1,666,293.70	\$1,599,419.72	\$1,888,191.13		
UPLIFT	\$67,666.34	\$49,177.73	\$101,664.00	\$129,013.82	\$93,839.51		
RESIDUALS	(\$115,214.54)	(\$124,043.00)	(\$78,780.93)	(\$225,184.19)	(\$162,286.75)		
ANCILLARY SERVICES	\$1,366,985.29	\$1,399,454.38	\$1,401,308.88	\$1,429,329.53	\$1,474,358.64		
TCC	\$983,223.25	\$1,095,506.77	\$1,591,107.67	\$1,557,313.53	\$1,782,842.27		



SETTLEMENTS REPORT
March 2023 Close-Out Settlement
December 7, 2023

Close-Out Settlement – Market Costs Analysis

	MONDAY	TUESDAY	WEDNESDAY	THURSDAY	FRIDAY	SATURDAY	SUNDAY
			1	2	3	4	5
ENERGY			\$10,655,887.28	\$8,613,213.28	\$8,373,778.28	\$9,673,320.67	\$8,734,647.63
TRANSMISSION SERVICE			\$2,383,027.99	\$1,440,496.56	\$1,738,601.01	\$1,971,583.59	\$1,294,282.55
UPLIFT			\$95,122.46	\$80,761.28	\$79,560.54	\$78,928.01	\$83,912.64
RESIDUALS			(\$146,774.59)	(\$171,433.52)	(\$135,149.07)	(\$63,716.63)	(\$149,013.76)
ANCILLARY SERVICES			\$1,590,539.33	\$1,468,320.15	\$1,463,973.35	\$1,557,833.28	\$1,411,882.58
TCC			\$2,318,377.79	\$1,057,742.22	\$1,291,441.32	\$2,211,997.71	\$968,885.08
	6	7	8	9	10	11	12
ENERGY	\$9,399,634.85	\$11,576,281.13	\$10,752,025.37	\$9,200,330.75	\$8,232,687.55	\$8,837,280.82	\$7,549,272.30
TRANSMISSION SERVICE	\$1,913,808.76	\$3,243,818.92	\$2,388,790.16	\$1,603,335.83	\$1,665,154.10	\$1,523,485.99	\$1,231,200.44
UPLIFT	\$132,231.99	\$212,497.53	\$135,625.23	\$150,186.98	\$192,384.66	\$78,408.04	\$94,103.30
RESIDUALS	(\$150,098.05)	(\$81,147.21)	(\$24,567.47)	\$69,089.07	\$62,644.55	(\$17,488.30)	(\$143,925.58)
ANCILLARY SERVICES	\$1,521,007.80	\$1,829,074.57	\$1,632,758.70	\$1,521,393.98	\$1,442,646.40	\$1,500,088.14	\$1,459,112.13
TCC	\$2,147,054.25	\$4,364,214.24	\$2,368,310.88	\$1,204,725.03	\$1,262,140.39	\$1,112,472.47	\$737,962.45
	13	14	15	16	17	18	19
ENERGY	\$9,453,136.21	\$10,949,488.34	\$9,510,593.33	\$8,021,778.96	\$6,719,885.95	\$6,469,960.91	\$8,240,667.37
TRANSMISSION SERVICE	\$1,581,278.54	\$2,154,013.34	\$2,096,299.01	\$1,620,480.04	\$2,267,745.10	\$1,751,259.07	\$1,828,926.73
UPLIFT	\$90,664.94	\$53,763.91	\$74,602.92	\$66,878.14	\$72,789.51	\$106,361.71	\$68,855.50
RESIDUALS	(\$152,312.32)	(\$201,377.44)	(\$80,251.47)	(\$17,831.18)	(\$107,721.80)	(\$159,552.20)	(\$136,515.51)
ANCILLARY SERVICES	\$1,529,384.27	\$1,573,093.92	\$1,486,080.91	\$1,424,141.23	\$1,459,408.16	\$1,362,476.63	\$1,442,951.93
TCC	\$1,152,272.25	\$1,943,095.62	\$1,906,564.66	\$1,275,733.41	\$2,363,503.26	\$1,900,000.12	\$1,988,352.99
	20	21	22	23	24	25	26
ENERGY	\$8,203,668.61	\$7,049,547.24	\$6,063,017.43	\$5,968,453.32	\$6,090,441.96	\$6,903,282.77	\$5,290,482.00
TRANSMISSION SERVICE	\$2,570,533.33	\$1,880,953.00	\$1,714,747.62	\$2,043,526.43	\$1,386,550.83	\$1,942,144.88	\$1,858,986.08
UPLIFT	\$67,677.92	\$77,604.54	\$57,554.57	\$91,870.82	\$86,157.84	\$53,051.99	\$73,244.70
RESIDUALS	\$199,902.14	\$73,368.75	(\$130,648.45)	(\$102,055.58)	(\$127,231.29)	(\$84,843.38)	(\$105,037.43)
ANCILLARY SERVICES	\$1,557,481.15	\$1,458,535.69	\$1,378,888.45	\$1,420,705.46	\$1,361,190.26	\$1,428,914.34	\$1,358,700.51
TCC	\$2,996,214.78	\$1,858,396.76	\$1,498,549.84	\$2,193,122.74	\$1,074,276.06	\$2,054,124.75	\$2,130,298.76
	27	28	29	30	31		
ENERGY	\$6,968,052.81	\$7,323,152.90	\$6,288,854.20	\$8,025,620.66	\$7,159,544.22		
TRANSMISSION SERVICE	\$1,359,425.90	\$1,433,890.85	\$1,666,293.84	\$1,599,419.79	\$1,888,191.15		
UPLIFT	\$67,666.34	\$49,177.73	\$101,664.00	\$129,013.82	\$93,839.51		
RESIDUALS	(\$115,214.53)	(\$124,043.00)	(\$78,780.92)	(\$225,184.18)	(\$162,286.75)		
ANCILLARY SERVICES	\$1,366,985.23	\$1,399,454.43	\$1,401,309.05	\$1,429,329.60	\$1,474,358.65		
TCC	\$983,223.25	\$1,095,506.77	\$1,591,107.67	\$1,557,313.53	\$1,782,842.27		

