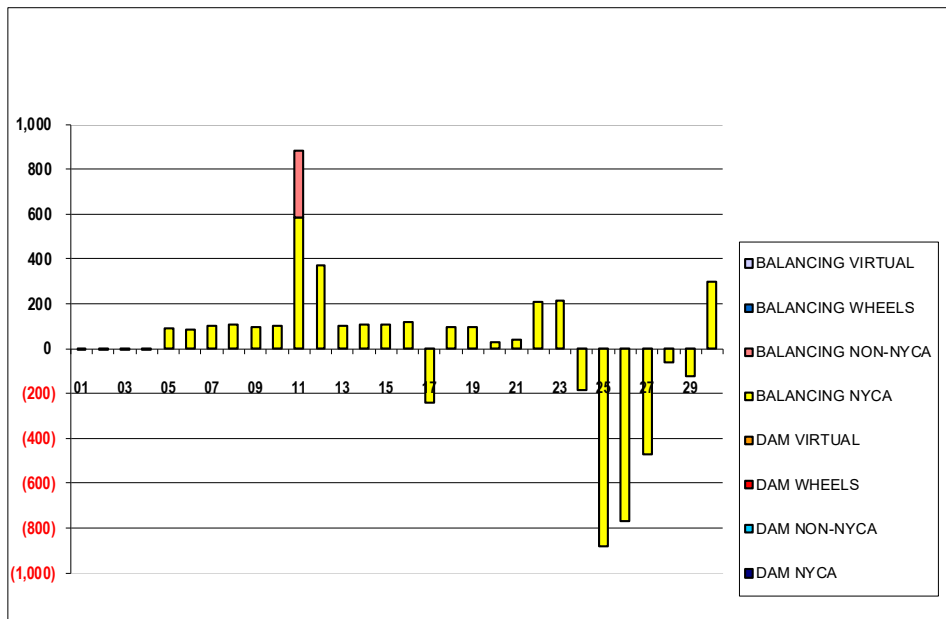


SETTLEMENTS REPORT  
 June 2023 Settlement Adjustment  
 November 7, 2023

**Settlement Adjustment – Market Supply Delta Analysis**

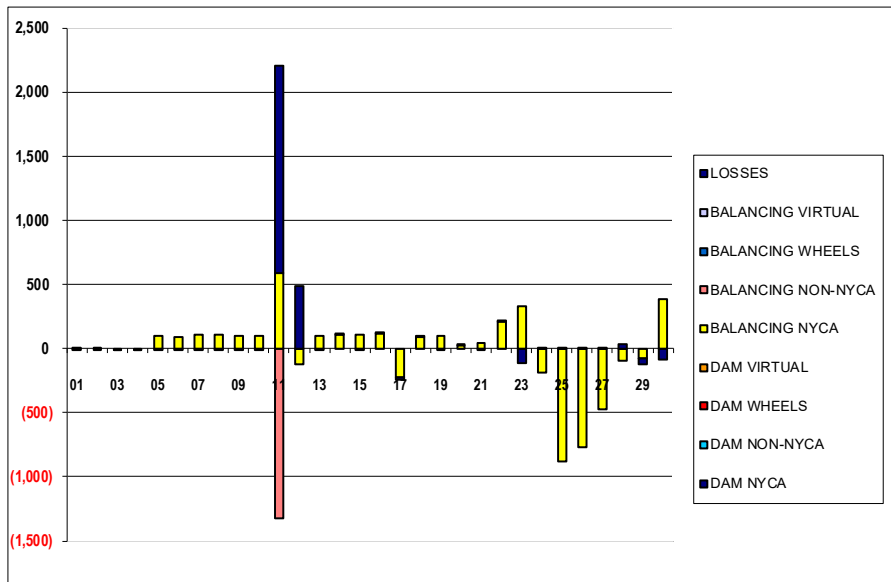
	MONDAY	TUESDAY	WEDNESDAY	THURSDAY	FRIDAY	SATURDAY	SUNDAY
				1	2	3	4
DAM NYCA				0	0	0	0
DAM NON-NYCA				0	0	0	0
DAM WHEELS				0	0	0	0
DAM VIRTUAL				0	0	0	0
BALANCING NYCA				(2)	(7)	(5)	(7)
BALANCING NON-NYCA				0	0	0	0
BALANCING WHEELS				0	0	0	0
BALANCING VIRTUAL				0	0	0	0
	5	6	7	8	9	10	11
DAM NYCA	0	0	0	0	0	0	0
DAM NON-NYCA	0	0	0	0	0	0	0
DAM WHEELS	0	0	0	0	0	0	0
DAM VIRTUAL	0	0	0	0	0	0	0
BALANCING NYCA	89	85	101	107	94	100	583
BALANCING NON-NYCA	0	0	0	0	0	0	300
BALANCING WHEELS	0	0	0	0	0	0	0
BALANCING VIRTUAL	0	0	0	0	0	0	0
	12	13	14	15	16	17	18
DAM NYCA	0	0	0	0	0	0	0
DAM NON-NYCA	0	0	0	0	0	0	0
DAM WHEELS	0	0	0	0	0	0	0
DAM VIRTUAL	0	0	0	0	0	0	0
BALANCING NYCA	370	101	107	107	117	(241)	93
BALANCING NON-NYCA	0	0	0	0	0	0	0
BALANCING WHEELS	0	0	0	0	0	0	0
BALANCING VIRTUAL	0	0	0	0	0	0	0
	19	20	21	22	23	24	25
DAM NYCA	0	0	0	0	0	0	0
DAM NON-NYCA	0	0	0	0	0	0	0
DAM WHEELS	0	0	0	0	0	0	0
DAM VIRTUAL	0	0	0	0	0	0	0
BALANCING NYCA	97	25	40	211	214	(188)	(883)
BALANCING NON-NYCA	0	0	0	0	0	0	0
BALANCING WHEELS	0	0	0	0	0	0	0
BALANCING VIRTUAL	0	0	0	0	0	0	0
	26	27	28	29	30		
DAM NYCA	0	0	0	0	0		
DAM NON-NYCA	0	0	0	0	0		
DAM WHEELS	0	0	0	0	0		
DAM VIRTUAL	0	0	0	0	0		
BALANCING NYCA	(770)	(473)	(63)	(124)	299		
BALANCING NON-NYCA	0	0	0	0	0		
BALANCING WHEELS	0	0	0	0	0		
BALANCING VIRTUAL	0	0	0	0	0		



SETTLEMENTS REPORT  
 June 2023 Settlement Adjustment  
 November 7, 2023

**Settlement Adjustment – Market Withdrawals Delta Analysis**

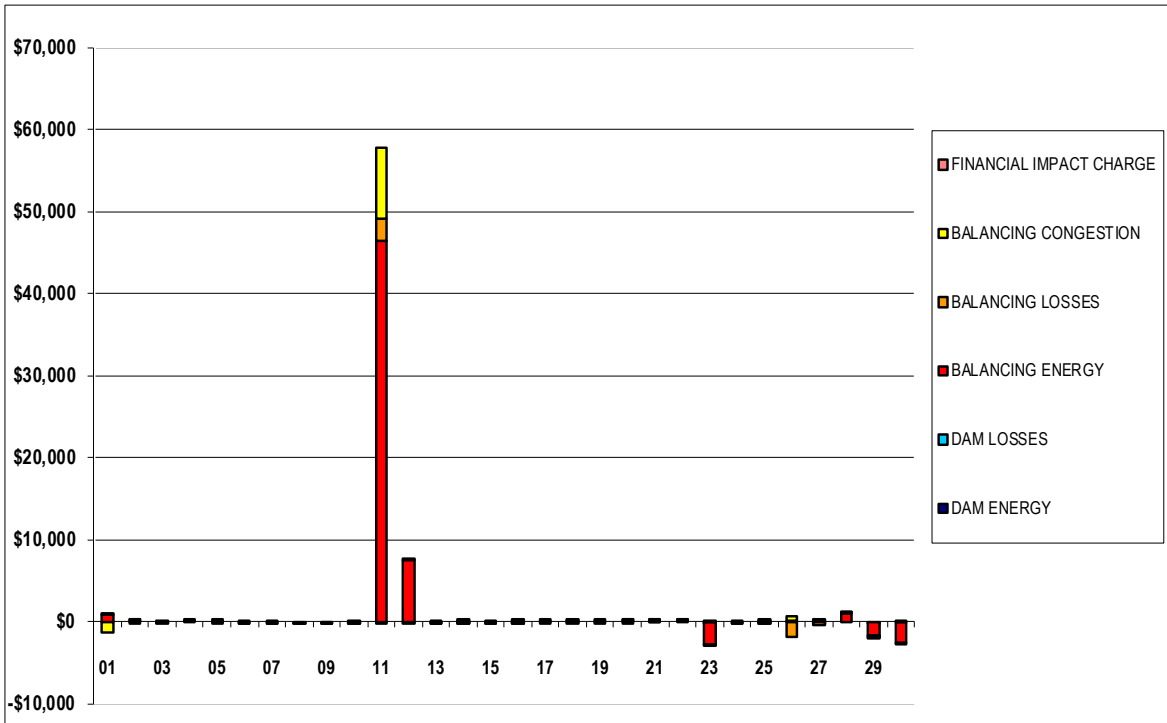
	MONDAY	TUESDAY	WEDNESDAY	THURSDAY	FRIDAY	SATURDAY	SUNDAY
				1	2	3	4
DAM NYCA				0	0	0	0
DAM NON-NYCA				0	0	0	0
DAM WHEELS				0	0	0	0
DAM VIRTUAL				0	0	0	0
BALANCING NYCA				(6)	(10)	(4)	(6)
BALANCING NON-NYCA				0	0	0	0
BALANCING WHEELS				0	0	0	0
BALANCING VIRTUAL				0	0	0	0
UFE/LOSSES				5	4	(0)	(1)
	5	6	7	8	9	10	11
DAM NYCA	0	0	0	0	0	0	0
DAM NON-NYCA	0	0	0	0	0	0	0
DAM WHEELS	0	0	0	0	0	0	0
DAM VIRTUAL	0	0	0	0	0	0	0
BALANCING NYCA	97	89	103	109	96	101	591
BALANCING NON-NYCA	0	0	0	0	0	0	(1,320)
BALANCING WHEELS	0	0	0	0	0	0	0
BALANCING VIRTUAL	0	0	0	0	0	0	0
UFE/LOSSES	(9)	(4)	(2)	(1)	(2)	(1)	1,613
	12	13	14	15	16	17	18
DAM NYCA	0	0	0	0	0	0	0
DAM NON-NYCA	0	0	0	0	0	0	0
DAM WHEELS	0	0	0	0	0	0	0
DAM VIRTUAL	0	0	0	0	0	0	0
BALANCING NYCA	(120)	102	105	108	116	(222)	91
BALANCING NON-NYCA	0	0	0	0	0	0	0
BALANCING WHEELS	0	0	0	0	0	0	0
BALANCING VIRTUAL	0	0	0	0	0	0	0
UFE/LOSSES	490	(1)	3	(1)	1	(20)	2
	19	20	21	22	23	24	25
DAM NYCA	0	0	0	0	0	0	0
DAM NON-NYCA	0	0	0	0	0	0	0
DAM WHEELS	0	0	0	0	0	0	0
DAM VIRTUAL	0	0	0	0	0	0	0
BALANCING NYCA	101	24	44	210	332	(189)	(885)
BALANCING NON-NYCA	0	0	0	0	0	0	0
BALANCING WHEELS	0	0	0	0	0	0	0
BALANCING VIRTUAL	0	0	0	0	0	0	0
UFE/LOSSES	(4)	1	(3)	0	(118)	1	1
	26	27	28	29	30		
DAM NYCA	0	0	0	0	0		
DAM NON-NYCA	0	0	0	0	0		
DAM WHEELS	0	0	0	0	0		
DAM VIRTUAL	0	0	0	0	0		
BALANCING NYCA	(771)	(475)	(92)	(77)	383		
BALANCING NON-NYCA	0	0	0	0	0		
BALANCING WHEELS	0	0	0	0	0		
BALANCING VIRTUAL	0	0	0	0	0		
UFE/LOSSES	1	3	29	(47)	(63)		



SETTLEMENTS REPORT  
 June 2023 Settlement Adjustment  
 November 7, 2023

**Settlement Adjustment – Market Residuals Delta Analysis**

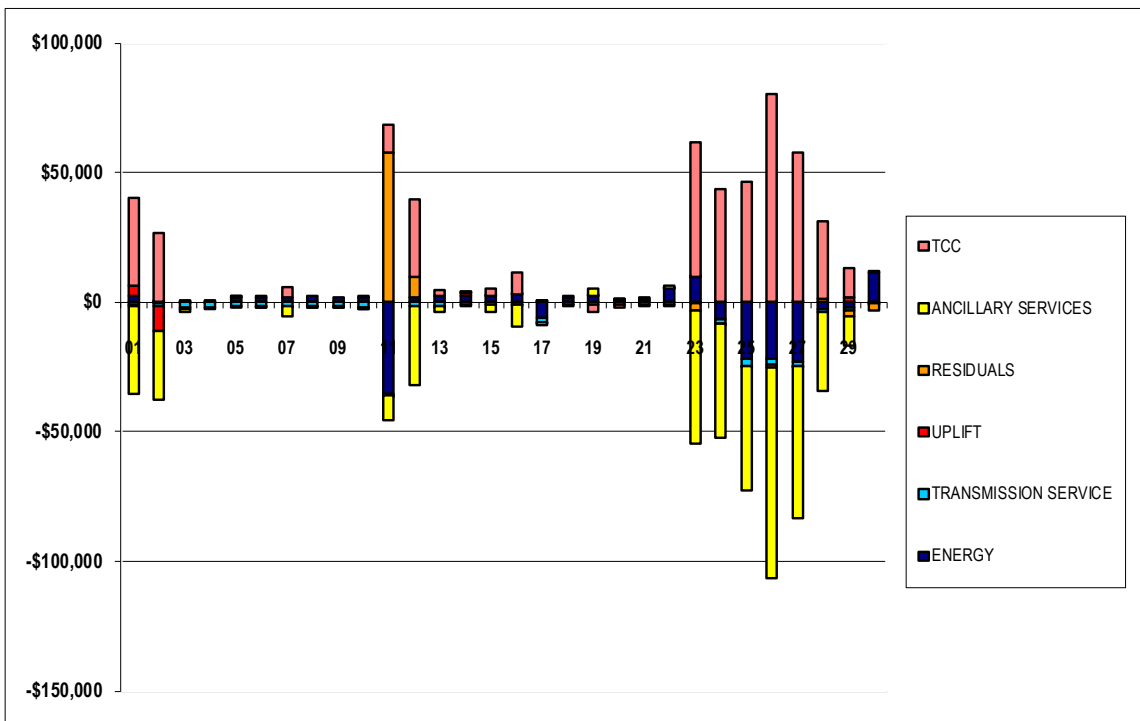
	MONDAY	TUESDAY	WEDNESDAY	THURSDAY	FRIDAY	SATURDAY	SUNDAY
				1	2	3	4
DAM ENERGY				\$0.00	(\$0.01)	\$0.00	\$0.00
DAM LOSSES				\$0.00	\$0.00	\$0.00	\$0.00
BALANCING ENERGY				\$834.54	\$100.22	(\$9.65)	\$1.74
BALANCING LOSSES				\$25.72	\$11.10	\$2.59	\$2.56
BALANCING CONGESTION				(\$1,303.20)	\$3.27	\$0.00	\$0.00
FINANCIAL IMPACT CHARGE				\$0.00	\$0.00	\$0.00	\$0.00
	5	6	7	8	9	10	11
DAM ENERGY	\$0.00	\$0.00	\$0.00	\$0.01	\$0.00	\$0.01	\$0.00
DAM LOSSES	\$0.00	\$0.00	\$0.00	\$0.00	\$0.01	(\$0.01)	(\$0.01)
BALANCING ENERGY	\$2.22	(\$33.63)	(\$38.49)	(\$28.67)	(\$16.10)	\$0.31	\$46,393.65
BALANCING LOSSES	(\$7.14)	(\$9.99)	(\$12.43)	(\$12.92)	(\$9.32)	(\$12.31)	\$2,730.82
BALANCING CONGESTION	\$9.45	\$19.57	\$0.07	\$0.00	(\$0.01)	\$0.00	\$8,620.00
FINANCIAL IMPACT CHARGE	\$0.00	\$0.00	\$0.00	\$0.00	\$0.00	\$0.00	\$0.00
	12	13	14	15	16	17	18
DAM ENERGY	\$0.01	\$0.00	\$0.01	\$0.00	\$0.00	\$0.00	\$0.01
DAM LOSSES	\$0.00	(\$0.01)	(\$0.01)	\$0.00	(\$0.01)	\$0.00	\$0.00
BALANCING ENERGY	\$7,481.85	(\$15.26)	\$71.16	(\$12.29)	\$29.66	(\$344.06)	\$46.76
BALANCING LOSSES	(\$99.62)	(\$9.13)	(\$3.33)	(\$9.04)	(\$8.11)	\$8.03	(\$5.04)
BALANCING CONGESTION	\$163.68	\$0.24	\$32.66	\$43.41	\$70.16	\$234.32	\$0.73
FINANCIAL IMPACT CHARGE	\$0.00	\$0.00	\$0.00	\$0.00	\$0.00	\$0.00	\$0.00
	19	20	21	22	23	24	25
DAM ENERGY	\$0.00	(\$0.01)	\$0.01	\$0.00	(\$0.01)	\$0.00	(\$0.01)
DAM LOSSES	\$0.00	\$0.00	\$0.01	\$0.00	\$0.00	\$0.00	(\$0.01)
BALANCING ENERGY	\$52.09	\$47.62	\$67.41	\$52.57	(\$2,790.11)	\$44.55	\$55.95
BALANCING LOSSES	(\$2.41)	\$8.59	\$20.25	\$39.43	(\$70.70)	(\$65.92)	(\$292.63)
BALANCING CONGESTION	\$2.79	\$2.58	\$1.33	\$3.63	\$40.96	(\$89.60)	\$113.36
FINANCIAL IMPACT CHARGE	\$0.00	\$0.00	\$0.00	\$0.00	\$0.00	\$0.00	\$0.00
	26	27	28	29	30		
DAM ENERGY	\$0.00	\$0.00	\$0.00	(\$0.01)	\$0.00		
DAM LOSSES	\$0.01	(\$0.01)	\$0.00	\$0.00	\$0.01		
BALANCING ENERGY	\$43.79	\$47.73	\$955.25	(\$1,732.76)	(\$2,651.89)		
BALANCING LOSSES	(\$1,951.39)	(\$493.27)	\$22.70	(\$175.40)	(\$110.42)		
BALANCING CONGESTION	\$539.18	\$164.30	\$33.47	(\$188.55)	\$22.78		
FINANCIAL IMPACT CHARGE	\$0.00	\$0.00	\$0.00	\$0.00	\$0.00		



SETTLEMENTS REPORT  
 June 2023 Settlement Adjustment  
 November 7, 2023

**Settlement Adjustment – Market Costs Delta Analysis**

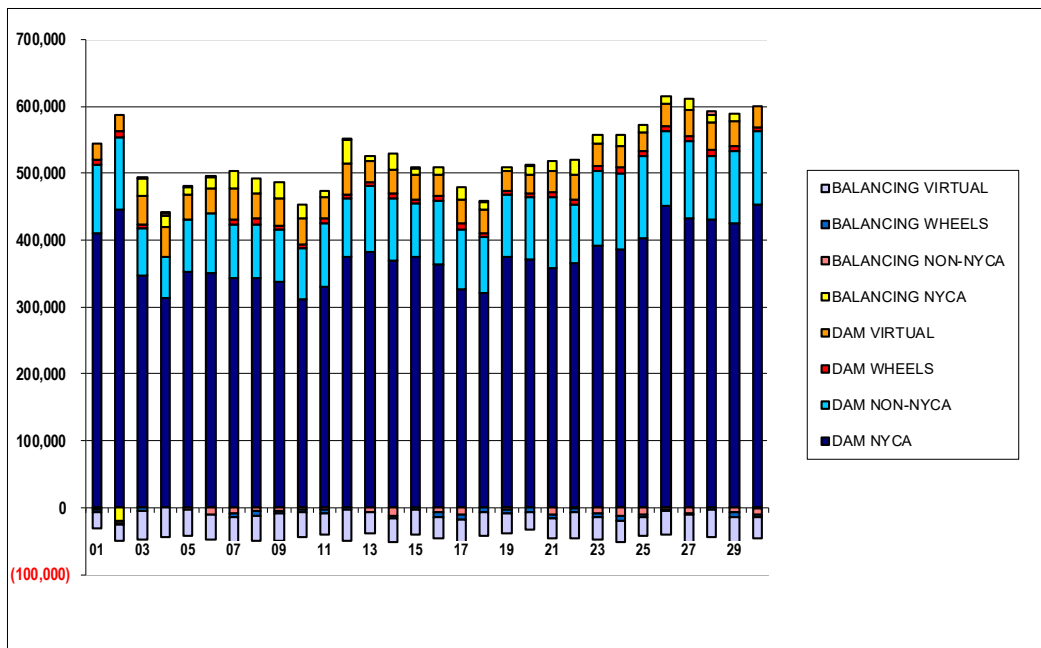
	MONDAY	TUESDAY	WEDNESDAY	THURSDAY	FRIDAY	SATURDAY	SUNDAY
ENERGY				1	2	3	4
TRANSMISSION SERVICE				\$2,116.27	(\$288.55)	(\$101.27)	(\$137.10)
UPLIFT				(\$1,139.88)	(\$1,563.77)	(\$2,319.23)	(\$1,802.58)
RESIDUALS				\$4,036.39	(\$9,262.24)	\$0.00	\$0.00
ANCILLARY SERVICES				(\$442.94)	\$114.58	(\$7.06)	\$4.30
TCC				(\$33,749.31)	(\$26,847.19)	(\$1,334.05)	(\$554.07)
				\$33,911.84	\$26,497.92	\$393.94	\$0.00
	5	6	7	8	9	10	11
ENERGY	\$1,829.04	\$1,634.10	\$1,997.44	\$2,533.54	\$2,067.34	\$1,934.44	(\$35,334.67)
TRANSMISSION SERVICE	(\$1,448.05)	(\$1,355.04)	(\$1,417.19)	(\$1,649.27)	(\$1,503.91)	(\$1,912.87)	(\$861.26)
UPLIFT	\$0.00	\$0.01	\$0.00	\$0.00	\$0.01	(\$0.01)	(\$0.01)
RESIDUALS	\$4.53	(\$24.05)	(\$50.85)	(\$41.58)	(\$25.42)	(\$12.00)	\$57,744.46
ANCILLARY SERVICES	\$549.18	\$452.19	(\$4,188.27)	(\$390.85)	(\$284.01)	(\$633.41)	(\$9,632.42)
TCC	(\$785.58)	(\$623.79)	\$3,971.96	\$0.00	\$0.00	\$40.14	\$10,555.59
	12	13	14	15	16	17	18
ENERGY	\$1,985.21	\$2,158.12	\$2,217.29	\$2,399.15	\$2,653.87	(\$6,230.61)	\$1,636.33
TRANSMISSION SERVICE	(\$1,775.36)	(\$1,384.63)	(\$1,062.15)	(\$1,033.44)	(\$918.31)	(\$1,618.66)	(\$1,146.46)
UPLIFT	\$0.01	(\$0.01)	\$1,199.85	\$0.01	(\$0.01)	\$0.05	(\$0.02)
RESIDUALS	\$7,545.92	(\$24.16)	\$100.49	\$22.08	\$91.70	(\$101.71)	\$42.46
ANCILLARY SERVICES	(\$30,373.02)	(\$2,451.79)	\$148.43	(\$2,943.31)	(\$8,731.22)	(\$1,103.65)	(\$12.48)
TCC	\$29,812.82	\$2,261.54	(\$87.10)	\$3,027.86	\$8,905.49	\$593.37	\$0.00
	19	20	21	22	23	24	25
ENERGY	\$2,197.29	\$417.27	\$943.54	\$5,009.57	\$9,586.34	(\$6,848.66)	(\$21,938.01)
TRANSMISSION SERVICE	(\$1,119.49)	(\$1,279.38)	(\$1,184.24)	(\$805.24)	(\$453.05)	(\$1,438.70)	(\$2,796.81)
UPLIFT	(\$0.02)	\$0.01	\$0.01	\$273.60	\$0.01	\$0.00	(\$0.01)
RESIDUALS	\$52.47	\$58.78	\$89.01	\$95.63	(\$2,819.86)	(\$110.97)	(\$123.34)
ANCILLARY SERVICES	\$2,772.12	\$920.28	\$321.67	\$1,084.93	(\$51,476.48)	(\$44,024.67)	(\$47,945.11)
TCC	(\$2,749.97)	(\$1,057.11)	(\$372.31)	(\$792.22)	\$52,044.29	\$43,711.86	\$46,357.36
	26	27	28	29	30		
ENERGY	(\$21,831.80)	(\$22,756.11)	(\$2,935.69)	(\$2,347.25)	\$11,315.01		
TRANSMISSION SERVICE	(\$2,258.22)	(\$1,810.48)	(\$1,078.83)	(\$1,143.43)	(\$302.49)		
UPLIFT	(\$0.01)	\$118.47	\$0.00	\$2,066.14	(\$0.57)		
RESIDUALS	(\$1,368.41)	(\$281.25)	\$1,011.42	(\$2,096.72)	(\$2,739.52)		
ANCILLARY SERVICES	(\$81,123.70)	(\$58,472.70)	(\$30,318.32)	(\$11,185.04)	\$705.71		
TCC	\$79,990.97	\$57,776.18	\$30,299.51	\$10,972.04	\$0.00		



SETTLEMENTS REPORT  
 June 2023 Settlement Adjustment  
 November 7, 2023

**Initial Settlement – Market Supply Analysis**

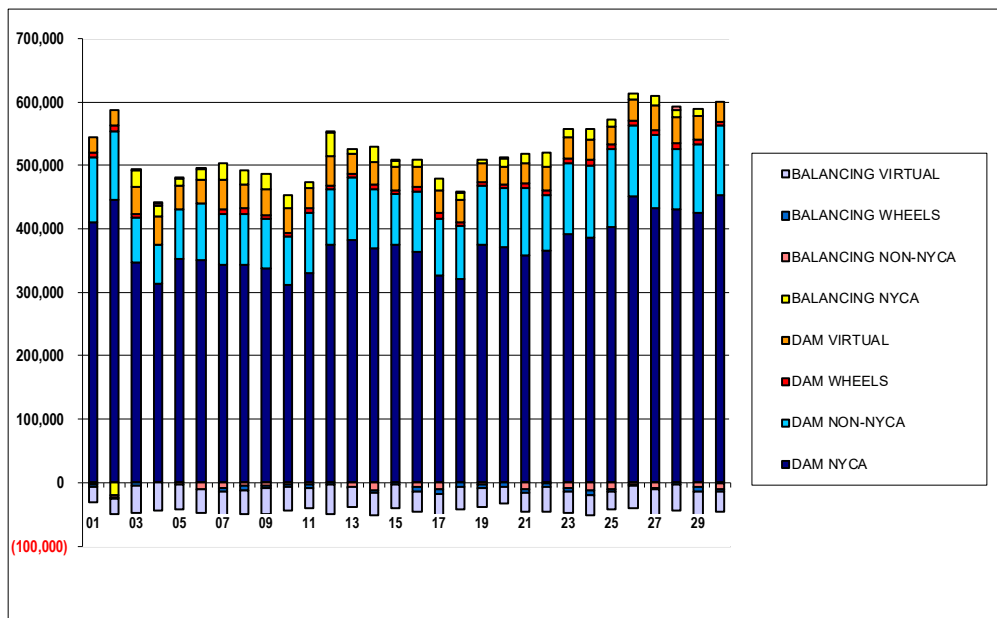
	MONDAY	TUESDAY	WEDNESDAY	THURSDAY	FRIDAY	SATURDAY	SUNDAY
				1	2	3	4
DAM NYCA				410,758	446,089	347,853	314,413
DAM NON-NYCA				101,553	107,971	69,364	60,723
DAM WHEELS				8,375	8,409	6,608	0
DAM VIRTUAL				23,668	25,286	42,732	44,141
BALANCING NYCA				(173)	(18,820)	25,092	17,513
BALANCING NON-NYCA				(2,677)	(4,138)	948	3,351
BALANCING WHEELS				(4,202)	(1,736)	(4,247)	700
BALANCING VIRTUAL				(23,668)	(25,286)	(42,732)	(44,141)
	5	6	7	8	9	10	11
DAM NYCA	353,596	350,293	343,684	342,729	338,272	310,948	330,872
DAM NON-NYCA	76,514	90,487	80,312	81,194	77,007	77,169	93,578
DAM WHEELS	0	0	6,415	8,902	7,158	6,408	7,939
DAM VIRTUAL	37,978	36,046	46,529	36,816	40,793	37,852	31,217
BALANCING NYCA	11,884	17,142	26,875	22,398	24,079	20,360	10,249
BALANCING NON-NYCA	(3,608)	(10,754)	(8,562)	(4,721)	(4,305)	(2,332)	(2,397)
BALANCING WHEELS	450	50	(4,930)	(7,400)	(4,517)	(4,051)	(5,971)
BALANCING VIRTUAL	(37,978)	(36,046)	(46,529)	(36,816)	(40,793)	(37,852)	(31,217)
	12	13	14	15	16	17	18
DAM NYCA	375,614	381,591	369,805	375,825	363,184	327,317	321,112
DAM NON-NYCA	86,695	99,555	93,018	78,906	95,134	89,269	83,722
DAM WHEELS	6,408	6,525	6,433	6,433	7,414	7,909	6,408
DAM VIRTUAL	46,862	30,580	35,913	37,310	32,250	36,301	35,317
BALANCING NYCA	35,197	7,240	24,273	8,663	10,877	18,465	9,606
BALANCING NON-NYCA	586	(5,812)	(11,463)	552	(7,229)	(9,625)	2,952
BALANCING WHEELS	(2,253)	(1,744)	(3,914)	(3,696)	(7,062)	(7,859)	(6,408)
BALANCING VIRTUAL	(46,862)	(30,580)	(35,913)	(37,310)	(32,250)	(36,301)	(35,317)
	19	20	21	22	23	24	25
DAM NYCA	374,909	371,863	358,942	366,367	391,898	386,899	403,295
DAM NON-NYCA	93,014	92,440	106,106	87,064	111,604	111,953	122,094
DAM WHEELS	6,408	6,408	6,408	6,708	7,083	9,610	7,476
DAM VIRTUAL	29,705	27,364	31,366	38,074	33,951	32,787	28,085
BALANCING NYCA	5,028	13,201	14,905	22,056	13,002	16,087	12,238
BALANCING NON-NYCA	(3,341)	973	(9,625)	(1,642)	(9,057)	(12,197)	(9,658)
BALANCING WHEELS	(5,967)	(6,276)	(5,705)	(5,704)	(5,464)	(6,915)	(4,873)
BALANCING VIRTUAL	(29,705)	(27,364)	(31,366)	(38,074)	(33,951)	(32,787)	(28,085)
	26	27	28	29	30		
DAM NYCA	451,318	432,087	431,373	426,062	452,593		
DAM NON-NYCA	112,616	116,710	94,939	107,486	109,669		
DAM WHEELS	6,458	6,758	8,540	8,068	6,683		
DAM VIRTUAL	34,447	39,863	41,018	36,627	31,680		
BALANCING NYCA	9,823	15,336	11,243	10,708	(1,103)		
BALANCING NON-NYCA	(2,389)	(8,118)	6,512	(7,192)	(8,737)		
BALANCING WHEELS	(3,240)	(3,118)	(2,517)	(6,961)	(4,967)		
BALANCING VIRTUAL	(34,447)	(39,863)	(41,018)	(36,627)	(31,680)		



SETTLEMENTS REPORT  
 June 2023 Settlement Adjustment  
 November 7, 2023

**4-Month Settlement Adjustment – Market Supply Analysis**

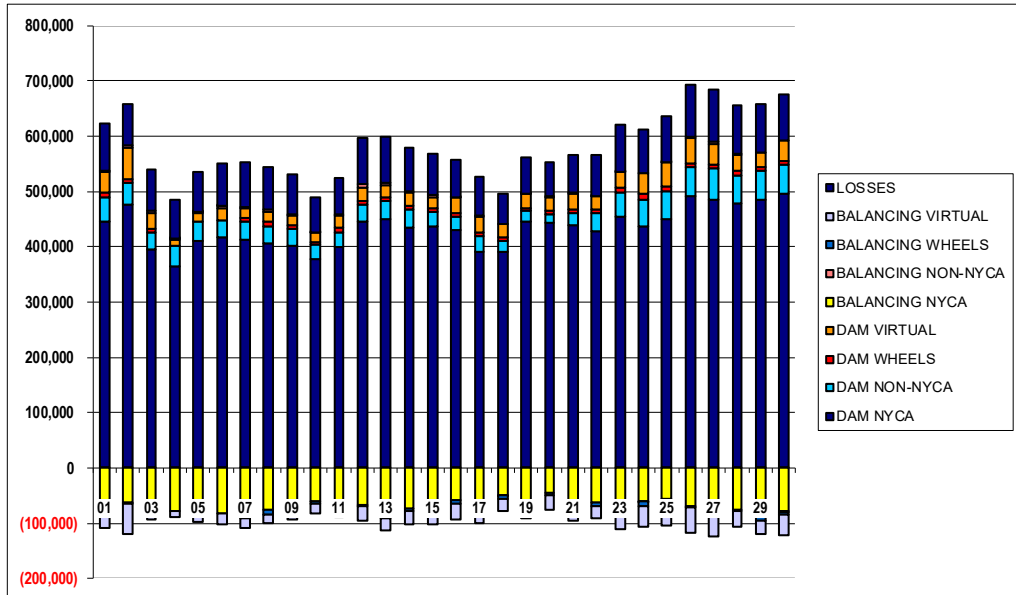
	MONDAY	TUESDAY	WEDNESDAY	THURSDAY	FRIDAY	SATURDAY	SUNDAY
				1	2	3	4
DAM NYCA				410,758	446,089	347,853	314,413
DAM NON-NYCA				101,553	107,971	69,364	60,723
DAM WHEELS				8,375	8,409	6,608	0
DAM VIRTUAL				23,668	25,286	42,732	44,141
BALANCING NYCA				(175)	(18,826)	25,087	17,506
BALANCING NON-NYCA				(2,677)	(4,138)	948	3,351
BALANCING WHEELS				(4,202)	(1,736)	(4,247)	700
BALANCING VIRTUAL				(23,668)	(25,286)	(42,732)	(44,141)
	5	6	7	8	9	10	11
DAM NYCA	353,596	350,293	343,684	342,729	338,272	310,948	330,872
DAM NON-NYCA	76,514	90,487	80,312	81,194	77,007	77,169	93,578
DAM WHEELS	0	0	6,415	8,902	7,158	6,408	7,939
DAM VIRTUAL	37,978	36,046	46,529	36,816	40,793	37,852	31,217
BALANCING NYCA	11,972	17,227	26,975	22,505	24,173	20,459	10,832
BALANCING NON-NYCA	(3,608)	(10,754)	(8,562)	(4,721)	(4,305)	(2,332)	(2,097)
BALANCING WHEELS	450	50	(4,930)	(7,400)	(4,517)	(4,051)	(5,971)
BALANCING VIRTUAL	(37,978)	(36,046)	(46,529)	(36,816)	(40,793)	(37,852)	(31,217)
	12	13	14	15	16	17	18
DAM NYCA	375,614	381,591	369,805	375,825	363,184	327,317	321,112
DAM NON-NYCA	86,695	99,555	93,018	78,906	95,134	89,269	83,722
DAM WHEELS	6,408	6,525	6,433	6,433	7,414	7,909	6,408
DAM VIRTUAL	46,862	30,580	35,913	37,310	32,250	36,301	35,317
BALANCING NYCA	35,566	7,340	24,380	8,771	10,994	18,224	9,699
BALANCING NON-NYCA	586	(5,812)	(11,463)	552	(7,229)	(9,625)	2,952
BALANCING WHEELS	(2,253)	(1,744)	(3,914)	(3,696)	(7,062)	(7,859)	(6,408)
BALANCING VIRTUAL	(46,862)	(30,580)	(35,913)	(37,310)	(32,250)	(36,301)	(35,317)
	19	20	21	22	23	24	25
DAM NYCA	374,909	371,863	358,942	366,367	391,898	386,899	403,295
DAM NON-NYCA	93,014	92,440	106,106	87,064	111,604	111,953	122,094
DAM WHEELS	6,408	6,408	6,408	6,708	7,083	9,610	7,476
DAM VIRTUAL	29,705	27,364	31,366	38,074	33,951	32,787	28,085
BALANCING NYCA	5,125	13,227	14,945	22,266	13,216	15,899	11,355
BALANCING NON-NYCA	(3,341)	973	(9,625)	(1,642)	(9,057)	(12,197)	(9,658)
BALANCING WHEELS	(5,967)	(6,276)	(5,705)	(5,704)	(5,464)	(6,915)	(4,873)
BALANCING VIRTUAL	(29,705)	(27,364)	(31,366)	(38,074)	(33,951)	(32,787)	(28,085)
	26	27	28	29	30		
DAM NYCA	451,318	432,087	431,373	426,062	452,593		
DAM NON-NYCA	112,616	116,710	94,939	107,486	109,669		
DAM WHEELS	6,458	6,758	8,540	8,068	6,683		
DAM VIRTUAL	34,447	39,863	41,018	36,627	31,680		
BALANCING NYCA	9,054	14,863	11,179	10,584	(804)		
BALANCING NON-NYCA	(2,389)	(8,118)	6,512	(7,192)	(8,737)		
BALANCING WHEELS	(3,240)	(3,118)	(2,517)	(6,961)	(4,967)		
BALANCING VIRTUAL	(34,447)	(39,863)	(41,018)	(36,627)	(31,680)		



SETTLEMENTS REPORT  
 June 2023 Settlement Adjustment  
 November 7, 2023

**Initial Settlement – Market Withdrawals Analysis**

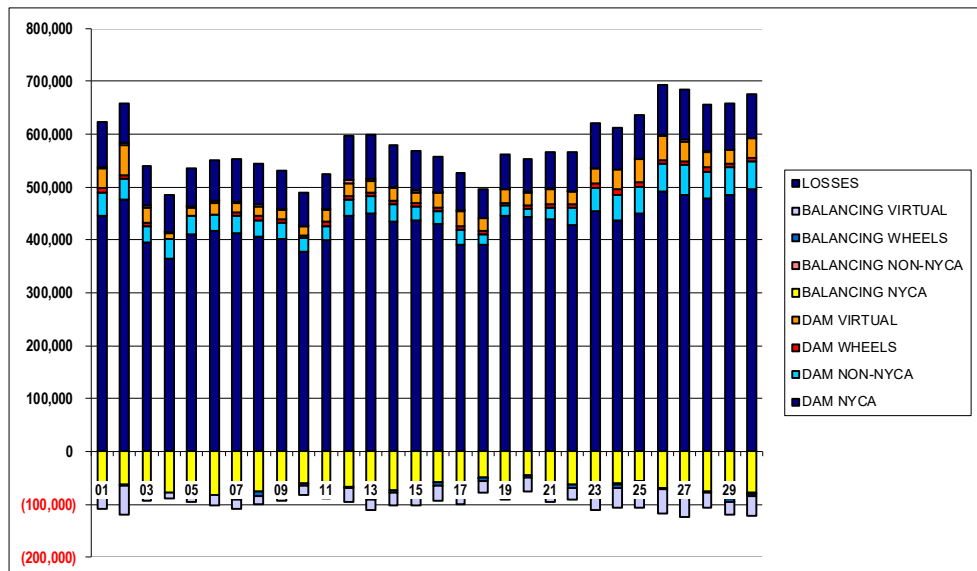
	MONDAY	TUESDAY	WEDNESDAY	THURSDAY	FRIDAY	SATURDAY	SUNDAY
				1	2	3	4
DAM NYCA				444,891	475,475	394,819	364,878
DAM NON-NYCA				45,052	39,458	31,574	36,995
DAM WHEELS				8,375	8,409	6,608	0
DAM VIRTUAL				38,320	55,339	26,992	11,603
BALANCING NYCA				(66,087)	(62,477)	(62,063)	(77,048)
BALANCING NON-NYCA				315	5,741	5,986	1,581
BALANCING WHEELS				(4,202)	(1,736)	(4,247)	700
BALANCING VIRTUAL				(38,320)	(55,339)	(26,992)	(11,603)
UFE/LOSSES				85,290	72,905	72,942	69,593
	5	6	7	8	9	10	11
DAM NYCA	409,922	418,115	413,012	406,422	402,841	377,020	398,760
DAM NON-NYCA	34,926	30,045	33,389	30,869	29,580	26,054	26,981
DAM WHEELS	0	0	6,415	8,902	7,158	6,408	7,939
DAM VIRTUAL	16,421	21,122	16,590	17,065	16,882	16,459	22,392
BALANCING NYCA	(80,249)	(81,718)	(87,053)	(76,304)	(71,097)	(61,216)	(61,499)
BALANCING NON-NYCA	2,504	4,102	3,542	3,698	1,410	614	3,587
BALANCING WHEELS	450	50	(4,930)	(7,400)	(4,517)	(4,051)	(5,971)
BALANCING VIRTUAL	(16,421)	(21,122)	(16,590)	(17,065)	(16,882)	(16,459)	(22,392)
UFE/LOSSES	71,283	76,625	79,419	76,915	72,319	63,673	64,473
	12	13	14	15	16	17	18
DAM NYCA	445,885	450,442	434,232	437,409	431,155	391,456	390,171
DAM NON-NYCA	30,512	31,855	32,827	25,765	22,657	27,558	21,528
DAM WHEELS	6,408	6,525	6,433	6,433	7,414	7,909	6,408
DAM VIRTUAL	24,605	21,648	24,133	21,016	28,209	26,725	22,217
BALANCING NYCA	(67,660)	(88,644)	(73,728)	(77,003)	(58,854)	(65,748)	(49,970)
BALANCING NON-NYCA	7,031	5,468	3,344	3,792	364	4,086	(278)
BALANCING WHEELS	(2,253)	(1,744)	(3,914)	(3,696)	(7,062)	(7,859)	(6,408)
BALANCING VIRTUAL	(24,605)	(21,648)	(24,133)	(21,016)	(28,209)	(26,725)	(22,217)
UFE/LOSSES	82,324	83,452	78,957	73,983	66,644	68,073	55,941
	19	20	21	22	23	24	25
DAM NYCA	444,675	442,597	439,215	427,440	453,453	436,550	449,329
DAM NON-NYCA	19,821	16,492	22,650	34,278	45,829	49,190	51,985
DAM WHEELS	6,408	6,408	6,408	6,708	7,083	9,610	7,476
DAM VIRTUAL	25,375	24,920	27,334	23,178	30,101	38,360	44,309
BALANCING NYCA	(60,426)	(44,086)	(62,501)	(63,314)	(75,728)	(61,254)	(55,973)
BALANCING NON-NYCA	146	1,007	2,238	822	184	(217)	328
BALANCING WHEELS	(5,967)	(6,276)	(5,705)	(5,704)	(5,464)	(6,915)	(4,873)
BALANCING VIRTUAL	(25,375)	(24,920)	(27,334)	(23,178)	(30,101)	(38,360)	(44,309)
UFE/LOSSES	65,395	62,467	68,726	74,618	83,709	78,473	82,300
	26	27	28	29	30		
DAM NYCA	491,819	485,335	478,953	484,407	496,978		
DAM NON-NYCA	51,683	55,934	50,285	52,371	51,022		
DAM WHEELS	6,458	6,758	8,540	8,068	6,683		
DAM VIRTUAL	46,088	38,114	28,527	24,752	37,188		
BALANCING NYCA	(68,379)	(82,706)	(75,207)	(86,504)	(77,491)		
BALANCING NON-NYCA	3,123	3,644	1,591	(1,817)	(2,710)		
BALANCING WHEELS	(3,240)	(3,118)	(2,517)	(6,961)	(4,967)		
BALANCING VIRTUAL	(46,088)	(38,114)	(28,527)	(24,752)	(37,188)		
UFE/LOSSES	93,122	93,808	88,444	88,607	84,622		



SETTLEMENTS REPORT  
 June 2023 Settlement Adjustment  
 November 7, 2023

**4-Month Settlement Adjustment – Market Withdrawals Analysis**

	MONDAY	TUESDAY	WEDNESDAY	THURSDAY	FRIDAY	SATURDAY	SUNDAY
				1	2	3	4
DAM NYCA				444,891	475,475	394,819	364,878
DAM NON-NYCA				45,052	39,458	31,574	36,995
DAM WHEELS				8,375	8,409	6,608	0
DAM VIRTUAL				38,320	55,339	26,992	11,603
BALANCING NYCA				(66,094)	(62,487)	(62,067)	(77,054)
BALANCING NON-NYCA				315	5,741	5,986	1,581
BALANCING WHEELS				(4,202)	(1,736)	(4,247)	700
BALANCING VIRTUAL				(38,320)	(55,339)	(26,992)	(11,603)
UFE/LOSSES				85,294	72,909	72,941	69,593
	5	6	7	8	9	10	11
DAM NYCA	409,922	418,115	413,012	406,422	402,841	377,020	398,760
DAM NON-NYCA	34,926	30,045	33,389	30,869	29,580	26,054	26,981
DAM WHEELS	0	0	6,415	8,902	7,158	6,408	7,939
DAM VIRTUAL	16,421	21,122	16,590	17,065	16,882	16,459	22,392
BALANCING NYCA	(80,152)	(81,629)	(86,950)	(76,195)	(71,001)	(61,115)	(60,908)
BALANCING NON-NYCA	2,504	4,102	3,542	3,698	1,410	614	2,267
BALANCING WHEELS	450	50	(4,930)	(7,400)	(4,517)	(4,051)	(5,971)
BALANCING VIRTUAL	(16,421)	(21,122)	(16,590)	(17,065)	(16,882)	(16,459)	(22,392)
UFE/LOSSES	71,275	76,621	79,417	76,913	72,317	63,672	66,085
	12	13	14	15	16	17	18
DAM NYCA	445,885	450,442	434,232	437,409	431,155	391,456	390,171
DAM NON-NYCA	30,512	31,855	32,827	25,765	22,657	27,558	21,528
DAM WHEELS	6,408	6,525	6,433	6,433	7,414	7,909	6,408
DAM VIRTUAL	24,605	21,648	24,133	21,016	28,209	26,725	22,217
BALANCING NYCA	(67,780)	(88,542)	(73,623)	(76,894)	(58,739)	(65,969)	(49,879)
BALANCING NON-NYCA	7,031	5,468	3,344	3,792	364	4,086	(278)
BALANCING WHEELS	(2,253)	(1,744)	(3,914)	(3,696)	(7,062)	(7,859)	(6,408)
BALANCING VIRTUAL	(24,605)	(21,648)	(24,133)	(21,016)	(28,209)	(26,725)	(22,217)
UFE/LOSSES	82,814	83,452	78,960	73,982	66,646	68,054	55,943
	19	20	21	22	23	24	25
DAM NYCA	444,675	442,597	439,215	427,440	453,453	436,550	449,329
DAM NON-NYCA	19,821	16,492	22,650	34,278	45,829	49,190	51,985
DAM WHEELS	6,408	6,408	6,408	6,708	7,083	9,610	7,476
DAM VIRTUAL	25,375	24,920	27,334	23,178	30,101	38,360	44,309
BALANCING NYCA	(60,325)	(44,062)	(62,458)	(63,104)	(75,396)	(61,444)	(56,858)
BALANCING NON-NYCA	146	1,007	2,238	822	184	(217)	328
BALANCING WHEELS	(5,967)	(6,276)	(5,705)	(5,704)	(5,464)	(6,915)	(4,873)
BALANCING VIRTUAL	(25,375)	(24,920)	(27,334)	(23,178)	(30,101)	(38,360)	(44,309)
UFE/LOSSES	65,391	62,468	68,723	74,619	83,591	78,474	82,302
	26	27	28	29	30		
DAM NYCA	491,819	485,335	478,953	484,407	496,978		
DAM NON-NYCA	51,683	55,934	50,285	52,371	51,022		
DAM WHEELS	6,458	6,758	8,540	8,068	6,683		
DAM VIRTUAL	46,088	38,114	28,527	24,752	37,188		
BALANCING NYCA	(69,150)	(83,181)	(75,299)	(86,581)	(77,108)		
BALANCING NON-NYCA	3,123	3,644	1,591	(1,817)	(2,710)		
BALANCING WHEELS	(3,240)	(3,118)	(2,517)	(6,961)	(4,967)		
BALANCING VIRTUAL	(46,088)	(38,114)	(28,527)	(24,752)	(37,188)		
UFE/LOSSES	93,123	93,811	88,473	88,560	84,538		

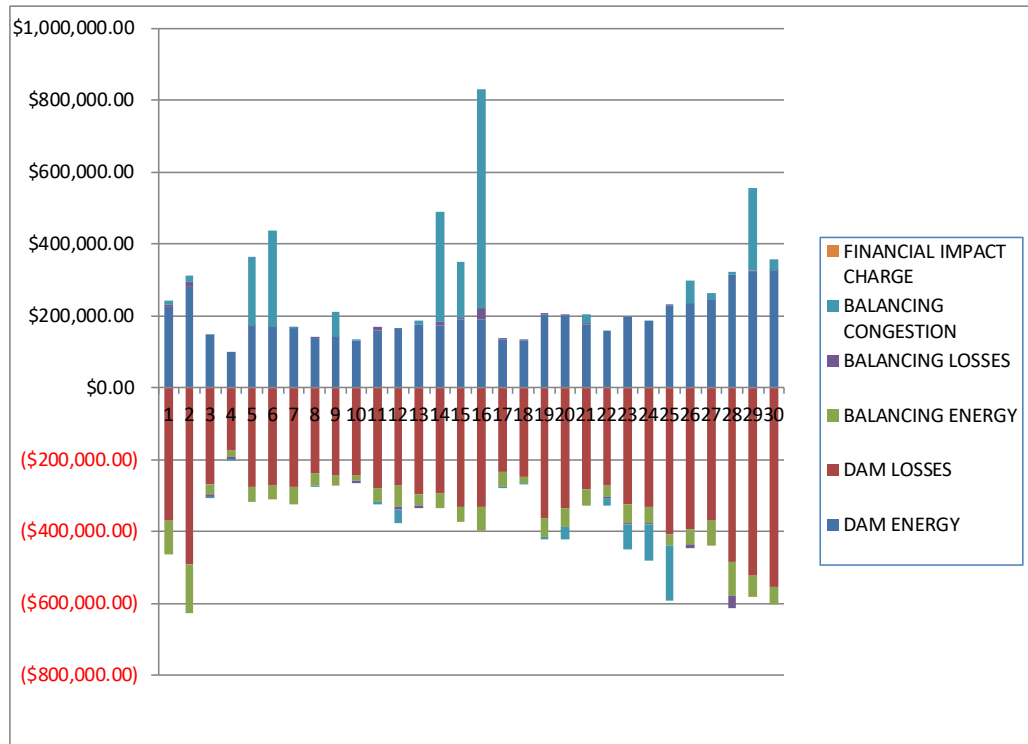




**SETTLEMENTS REPORT**  
 June 2023 Settlement Adjustment  
 November 7, 2023

**Initial Settlement – Market Residuals Analysis**

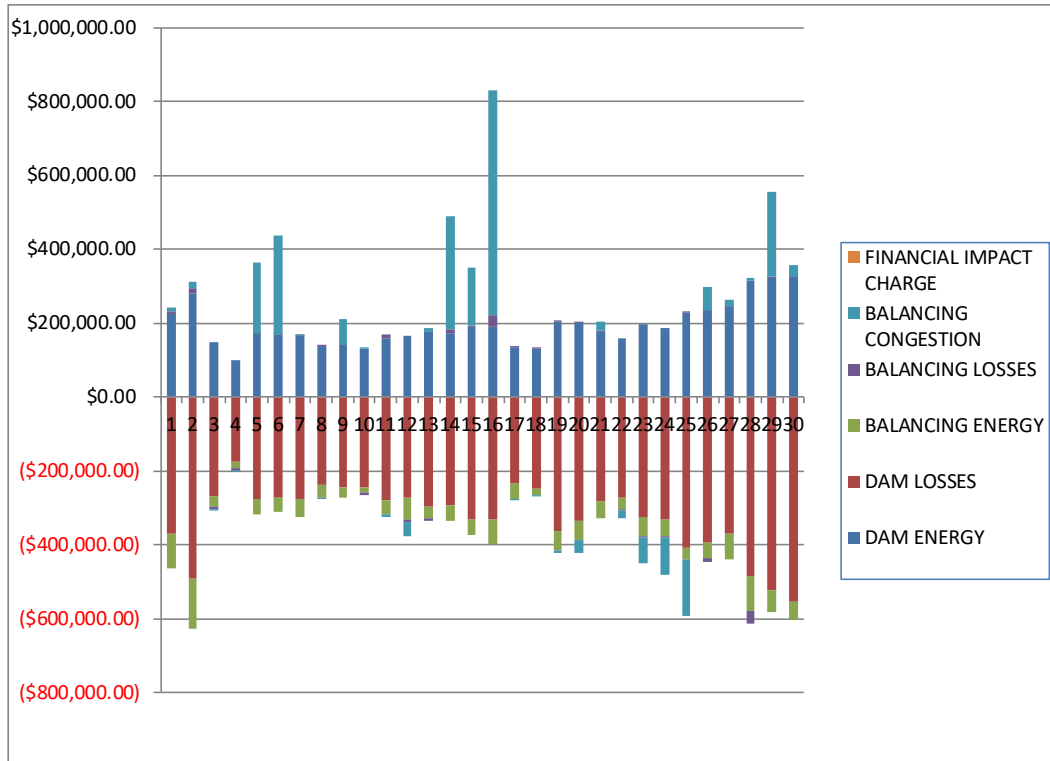
	MONDAY	TUESDAY	WEDNESDAY	THURSDAY	FRIDAY	SATURDAY	SUNDAY
				1	2	3	4
DAM ENERGY				\$223,671.34	\$280,738.71	\$149,008.08	\$100,492.83
DAM LOSSES				(\$371,924.30)	(\$492,351.82)	(\$270,922.27)	(\$176,115.43)
BALANCING ENERGY				(\$92,832.29)	(\$136,924.87)	(\$26,276.22)	(\$15,649.06)
BALANCING LOSSES				\$6,517.29	\$12,828.75	(\$7,404.28)	(\$7,648.60)
BALANCING CONGESTION				\$12,918.49	\$19,427.53	(\$2,506.95)	(\$2,608.90)
FINANCIAL IMPACT CHARGE				\$0.00	\$0.00	\$0.00	\$0.00
	5	6	7	8	9	10	11
DAM ENERGY	\$170,628.53	\$169,172.77	\$163,620.82	\$137,556.84	\$140,380.69	\$130,345.95	\$157,969.62
DAM LOSSES	(\$276,253.46)	(\$273,158.55)	(\$276,833.21)	(\$236,661.63)	(\$244,685.96)	(\$243,515.41)	(\$279,902.69)
BALANCING ENERGY	(\$41,158.87)	(\$39,707.49)	(\$46,580.50)	(\$35,592.73)	(\$27,977.09)	(\$14,988.57)	(\$39,045.01)
BALANCING LOSSES	\$346.69	\$296.64	\$546.65	\$5,024.70	\$1,370.49	(\$7,702.41)	\$10,557.14
BALANCING CONGESTION	\$192,949.87	\$266,797.10	\$327.72	(\$460.77)	\$67,258.87	\$1,626.93	(\$5,386.42)
FINANCIAL IMPACT CHARGE	\$0.00	\$0.00	\$0.00	\$0.00	\$0.00	\$0.00	\$0.00
	12	13	14	15	16	17	18
DAM ENERGY	\$164,903.95	\$176,637.31	\$172,915.25	\$189,978.24	\$190,902.25	\$133,536.91	\$130,755.72
DAM LOSSES	(\$273,569.23)	(\$295,864.24)	(\$293,899.14)	(\$331,670.03)	(\$332,513.40)	(\$234,100.78)	(\$247,251.22)
BALANCING ENERGY	(\$56,949.04)	(\$31,544.49)	(\$41,536.50)	(\$42,331.69)	(\$67,124.45)	(\$41,655.38)	(\$19,351.58)
BALANCING LOSSES	(\$9,414.43)	(\$7,005.51)	\$8,144.29	\$4,809.76	\$28,423.02	\$5,241.99	\$3,088.20
BALANCING CONGESTION	(\$37,606.03)	\$10,194.50	\$308,765.30	\$153,339.44	\$611,074.95	(\$423.23)	(\$2,400.53)
FINANCIAL IMPACT CHARGE	\$0.00	\$0.00	\$0.00	\$0.00	\$0.00	\$0.00	\$0.00
	19	20	21	22	23	24	25
DAM ENERGY	\$202,494.14	\$198,740.36	\$174,586.95	\$157,896.24	\$197,148.38	\$187,231.95	\$228,906.39
DAM LOSSES	(\$364,621.92)	(\$337,140.59)	(\$281,658.83)	(\$272,937.17)	(\$326,335.20)	(\$332,525.67)	(\$409,821.39)
BALANCING ENERGY	(\$52,430.01)	(\$51,708.78)	(\$46,077.20)	(\$29,903.17)	(\$52,151.10)	(\$44,268.86)	(\$29,961.62)
BALANCING LOSSES	\$5,935.35	\$3,523.96	\$4,236.10	(\$6,199.26)	(\$2,136.84)	(\$4,945.90)	\$1,121.74
BALANCING CONGESTION	(\$4,760.11)	(\$33,656.01)	\$23,040.52	(\$20,871.31)	(\$70,411.24)	(\$101,280.82)	(\$154,467.87)
FINANCIAL IMPACT CHARGE	\$0.00	\$0.00	\$0.00	\$0.00	\$0.00	\$0.00	\$0.00
	26	27	28	29	30		
DAM ENERGY	\$235,840.17	\$245,171.05	\$314,267.86	\$321,244.88	\$324,100.90		
DAM LOSSES	(\$393,735.18)	(\$370,261.27)	(\$486,020.79)	(\$522,546.33)	(\$555,298.40)		
BALANCING ENERGY	(\$44,224.35)	(\$71,228.71)	(\$91,952.95)	(\$60,096.95)	(\$47,565.69)		
BALANCING LOSSES	(\$8,373.05)	\$695.59	(\$37,423.16)	\$2,467.82	\$2,172.75		
BALANCING CONGESTION	\$60,009.37	\$16,716.76	\$6,492.19	\$230,076.44	\$29,007.42		
FINANCIAL IMPACT CHARGE	\$0.00	\$0.00	\$0.00	\$0.00	\$0.00		



**SETTLEMENTS REPORT**  
 June 2023 Settlement Adjustment  
 November 7, 2023

**4-Month Settlement Adjustment – Market Residuals Analysis**

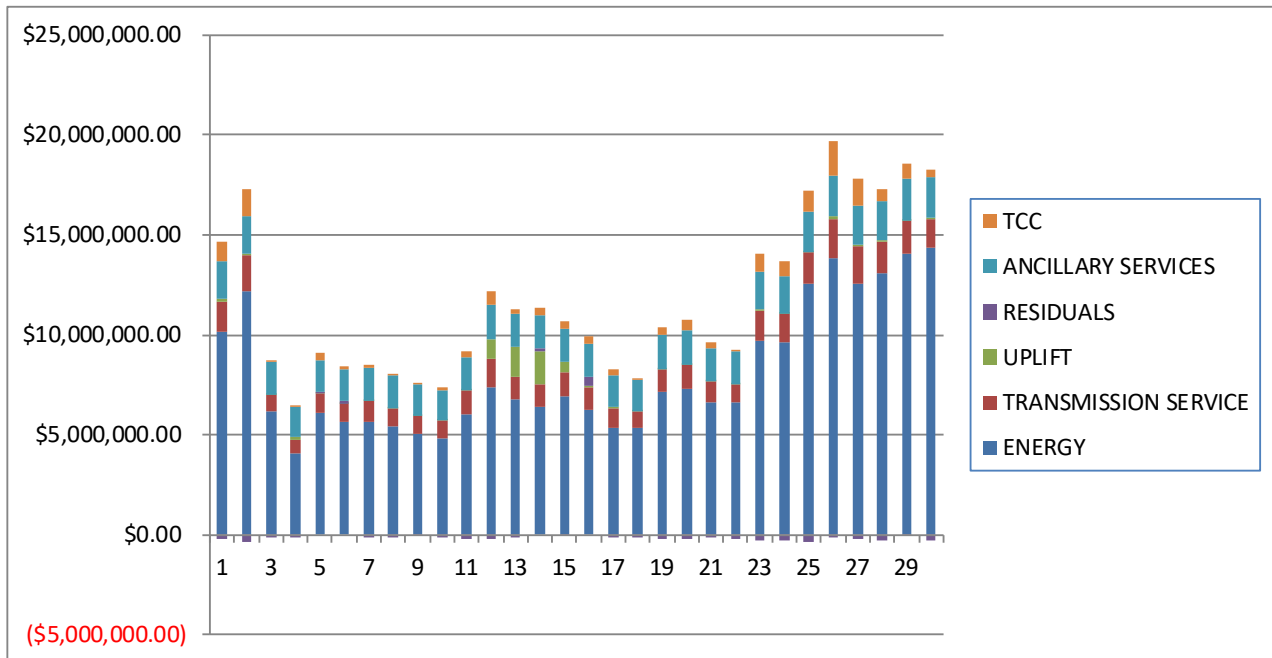
	MONDAY	TUESDAY	WEDNESDAY	THURSDAY	FRIDAY	SATURDAY	SUNDAY
				1	2	3	4
DAM ENERGY				\$223,671.34	\$280,738.71	\$149,008.08	\$100,492.83
DAM LOSSES				(\$371,924.30)	(\$492,351.82)	(\$270,922.27)	(\$176,115.43)
BALANCING ENERGY				(\$92,832.29)	(\$136,924.87)	(\$26,276.22)	(\$15,649.06)
BALANCING LOSSES				\$6,517.29	\$12,828.75	(\$7,404.28)	(\$7,648.60)
BALANCING CONGESTION				\$12,918.49	\$19,427.53	(\$2,506.95)	(\$2,608.90)
FINACIAL IMPACT CHARGE				\$0.00	\$0.00	\$0.00	\$0.00
	5	6	7	8	9	10	11
DAM ENERGY	\$170,628.53	\$169,172.77	\$163,620.82	\$137,556.84	\$140,380.69	\$130,345.95	\$157,969.62
DAM LOSSES	(\$276,253.46)	(\$273,158.55)	(\$276,833.21)	(\$236,661.63)	(\$244,685.96)	(\$243,515.41)	(\$279,902.69)
BALANCING ENERGY	(\$41,158.87)	(\$39,707.49)	(\$46,580.50)	(\$35,592.73)	(\$27,977.09)	(\$14,988.57)	(\$39,045.01)
BALANCING LOSSES	\$346.69	\$296.64	\$546.65	\$5,024.70	\$1,370.49	(\$7,702.41)	\$10,557.14
BALANCING CONGESTION	\$192,949.87	\$266,797.10	\$327.72	(\$460.77)	\$67,258.87	\$1,626.93	(\$5,386.42)
FINACIAL IMPACT CHARGE	\$0.00	\$0.00	\$0.00	\$0.00	\$0.00	\$0.00	\$0.00
	12	13	14	15	16	17	18
DAM ENERGY	\$164,903.95	\$176,637.31	\$172,915.25	\$189,978.24	\$190,902.25	\$133,536.91	\$130,755.72
DAM LOSSES	(\$273,569.23)	(\$295,864.24)	(\$293,899.14)	(\$331,670.03)	(\$332,513.40)	(\$234,100.78)	(\$247,251.22)
BALANCING ENERGY	(\$56,949.04)	(\$31,544.49)	(\$41,536.50)	(\$42,331.69)	(\$67,124.45)	(\$41,655.38)	(\$19,351.58)
BALANCING LOSSES	(\$9,414.43)	(\$7,005.51)	\$8,144.29	\$4,809.76	\$28,423.02	\$5,241.99	\$3,088.20
BALANCING CONGESTION	(\$37,606.03)	\$10,194.50	\$308,765.30	\$153,339.44	\$611,074.95	(\$423.23)	(\$2,400.53)
FINACIAL IMPACT CHARGE	\$0.00	\$0.00	\$0.00	\$0.00	\$0.00	\$0.00	\$0.00
	19	20	21	22	23	24	25
DAM ENERGY	\$202,494.14	\$198,740.36	\$174,586.95	\$157,896.24	\$197,148.38	\$187,231.95	\$228,906.39
DAM LOSSES	(\$364,621.92)	(\$337,140.59)	(\$281,658.83)	(\$272,937.17)	(\$326,335.20)	(\$332,525.67)	(\$409,821.39)
BALANCING ENERGY	(\$52,430.01)	(\$51,708.78)	(\$46,077.20)	(\$29,903.17)	(\$52,151.10)	(\$44,268.86)	(\$29,961.62)
BALANCING LOSSES	\$5,935.35	\$3,523.96	\$4,236.10	(\$6,199.26)	(\$2,136.84)	(\$4,945.90)	\$1,121.74
BALANCING CONGESTION	(\$4,760.11)	(\$33,656.01)	\$23,040.52	(\$20,871.31)	(\$70,411.24)	(\$101,280.82)	(\$154,467.87)
FINACIAL IMPACT CHARGE	\$0.00	\$0.00	\$0.00	\$0.00	\$0.00	\$0.00	\$0.00
	26	27	28	29	30		
DAM ENERGY	\$235,840.17	\$245,171.05	\$314,267.86	\$321,244.88	\$324,100.90		
DAM LOSSES	(\$393,735.18)	(\$370,261.27)	(\$486,020.79)	(\$522,546.33)	(\$555,298.40)		
BALANCING ENERGY	(\$44,224.35)	(\$71,228.71)	(\$91,952.95)	(\$60,096.95)	(\$47,565.69)		
BALANCING LOSSES	(\$8,373.05)	\$695.59	(\$37,423.16)	\$2,467.82	\$2,172.75		
BALANCING CONGESTION	\$60,009.37	\$16,716.76	\$6,492.19	\$230,076.44	\$29,007.42		
FINACIAL IMPACT CHARGE	\$0.00	\$0.00	\$0.00	\$0.00	\$0.00		



SETTLEMENTS REPORT  
 June 2023 Settlement Adjustment  
 November 7, 2023

**Initial Settlement – Market Costs Analysis**

	MONDAY	TUESDAY	WEDNESDAY	THURSDAY	FRIDAY	SATURDAY	SUNDAY
				1	2	3	4
ENERGY				\$10,170,841.17	\$12,179,874.90	\$6,139,747.08	\$4,042,249.90
TRANSMISSION SERVICE				\$1,509,744.94	\$1,779,836.32	\$861,063.82	\$702,475.87
UPLIFT				\$99,174.81	\$105,739.77	\$28,919.56	\$118,904.36
RESIDUALS				(\$221,206.53)	(\$316,396.28)	(\$158,094.58)	(\$101,533.46)
ANCILLARY SERVICES				\$1,922,229.05	\$1,890,636.59	\$1,603,280.35	\$1,513,598.32
TCC				\$920,737.29	\$1,320,857.05	\$63,517.78	\$59,803.63
	5	6	7	8	9	10	11
ENERGY	\$6,088,883.98	\$5,638,223.27	\$5,680,537.99	\$5,409,089.70	\$5,035,915.17	\$4,796,310.39	\$6,052,251.51
TRANSMISSION SERVICE	\$972,891.79	\$919,905.68	\$1,050,892.25	\$931,994.69	\$908,860.45	\$901,406.37	\$1,138,171.90
UPLIFT	\$46,902.77	\$19,273.82	\$5,774.00	\$6,675.28	\$4,603.03	\$2,638.04	\$45,947.96
RESIDUALS	\$46,508.23	\$123,424.52	(\$158,867.67)	(\$130,092.01)	(\$63,627.58)	(\$134,221.51)	(\$213,551.82)
ANCILLARY SERVICES	\$1,598,086.95	\$1,595,540.34	\$1,591,205.02	\$1,591,977.63	\$1,582,847.06	\$1,541,092.85	\$1,624,492.10
TCC	\$316,790.96	\$118,645.29	\$163,369.43	\$67,954.32	\$46,775.12	\$148,161.87	\$321,102.50
	12	13	14	15	16	17	18
ENERGY	\$7,387,790.33	\$6,799,836.70	\$6,415,978.53	\$6,930,773.98	\$6,269,245.72	\$5,366,386.02	\$5,343,735.64
TRANSMISSION SERVICE	\$1,437,453.76	\$1,116,568.73	\$1,124,548.37	\$1,208,345.56	\$1,137,220.77	\$978,214.70	\$834,515.05
UPLIFT	\$930,971.85	\$1,466,601.22	\$1,640,106.20	\$478,147.68	\$53,456.54	\$26,912.03	\$30,611.05
RESIDUALS	(\$220,180.70)	(\$147,558.27)	\$154,288.71	(\$25,896.36)	\$430,670.67	(\$137,298.78)	(\$135,201.87)
ANCILLARY SERVICES	\$1,762,016.36	\$1,659,510.11	\$1,639,477.32	\$1,671,604.12	\$1,653,356.32	\$1,583,489.49	\$1,573,488.00
TCC	\$621,741.64	\$210,630.83	\$363,162.63	\$418,883.93	\$406,164.84	\$287,513.78	\$42,203.63
	19	20	21	22	23	24	25
ENERGY	\$7,132,433.03	\$7,314,900.44	\$6,611,903.29	\$6,636,419.23	\$9,717,620.31	\$9,636,214.46	\$12,539,813.26
TRANSMISSION SERVICE	\$1,111,105.69	\$1,186,710.62	\$1,030,397.54	\$887,921.88	\$1,496,209.59	\$1,378,801.00	\$1,556,610.20
UPLIFT	\$14,230.13	\$35,122.79	\$28,674.91	\$13,963.64	\$29,489.95	\$25,968.55	\$64,054.73
RESIDUALS	(\$213,435.02)	(\$220,299.84)	(\$125,961.47)	(\$172,110.30)	(\$251,066.14)	(\$295,678.33)	(\$364,099.41)
ANCILLARY SERVICES	\$1,710,201.97	\$1,697,660.73	\$1,651,052.95	\$1,628,233.62	\$1,909,814.37	\$1,875,017.96	\$2,000,924.32
TCC	\$396,257.49	\$493,518.51	\$323,977.32	\$23,665.35	\$885,652.62	\$744,403.90	\$1,055,172.45
	26	27	28	29	30		
ENERGY	\$13,839,080.55	\$12,557,143.87	\$13,070,576.75	\$14,082,233.67	\$14,339,597.49		
TRANSMISSION SERVICE	\$1,957,682.91	\$1,876,927.92	\$1,593,596.90	\$1,621,914.25	\$1,427,845.66		
UPLIFT	\$95,932.21	\$47,097.05	\$54,592.31	\$31,170.22	\$63,475.94		
RESIDUALS	(\$149,114.63)	(\$178,625.33)	(\$295,648.27)	(\$26,757.42)	(\$244,843.50)		
ANCILLARY SERVICES	\$2,034,998.01	\$1,943,392.45	\$1,932,146.46	\$2,043,054.12	\$2,030,597.51		
TCC	\$1,713,463.53	\$1,354,135.03	\$597,455.40	\$783,780.89	\$385,807.68		



SETTLEMENTS REPORT  
 June 2023 Settlement Adjustment  
 November 7, 2023

**4-Month Settlement Adjustment – Market Costs Analysis**

	MONDAY	TUESDAY	WEDNESDAY	THURSDAY	FRIDAY	SATURDAY	SUNDAY
				1	2	3	4
ENERGY				\$10,172,957.44	\$12,179,586.35	\$6,139,645.81	\$4,042,112.80
TRANSMISSION SERVICE				\$1,508,605.06	\$1,778,272.55	\$858,744.59	\$700,673.29
UPLIFT				\$103,211.20	\$96,477.53	\$28,919.56	\$118,904.36
RESIDUALS				(\$221,649.47)	(\$316,281.70)	(\$158,101.64)	(\$101,529.16)
ANCILLARY SERVICES				\$1,888,479.74	\$1,863,789.40	\$1,601,946.30	\$1,513,044.25
TCC				\$954,649.13	\$1,347,354.97	\$63,911.72	\$59,803.63
	5	6	7	8	9	10	11
ENERGY	\$6,090,713.02	\$5,639,857.37	\$5,682,535.43	\$5,411,623.24	\$5,037,982.51	\$4,798,244.83	\$6,016,916.84
TRANSMISSION SERVICE	\$971,443.74	\$918,550.64	\$1,049,475.06	\$930,345.42	\$907,356.54	\$899,493.50	\$1,137,310.64
UPLIFT	\$46,902.77	\$19,273.83	\$5,774.00	\$6,675.28	\$4,603.04	\$2,638.03	\$45,947.95
RESIDUALS	\$46,512.76	\$123,400.47	(\$158,918.52)	(\$130,133.59)	(\$63,653.00)	(\$134,233.51)	(\$155,807.36)
ANCILLARY SERVICES	\$1,598,636.13	\$1,595,992.53	\$1,587,016.75	\$1,591,586.78	\$1,582,563.05	\$1,540,459.44	\$1,614,859.68
TCC	\$316,005.38	\$118,021.50	\$167,341.39	\$67,954.32	\$46,775.12	\$148,202.01	\$331,658.09
	12	13	14	15	16	17	18
ENERGY	\$7,389,775.54	\$6,801,994.82	\$6,418,195.82	\$6,933,173.13	\$6,271,899.59	\$5,360,155.41	\$5,345,371.97
TRANSMISSION SERVICE	\$1,435,678.40	\$1,115,184.10	\$1,123,486.22	\$1,207,312.12	\$1,136,302.46	\$976,596.04	\$833,368.59
UPLIFT	\$930,971.86	\$1,466,601.21	\$1,641,306.05	\$478,147.69	\$53,456.53	\$26,912.08	\$30,611.03
RESIDUALS	(\$212,634.78)	(\$147,582.43)	\$154,389.20	(\$25,874.28)	\$430,762.37	(\$137,400.49)	(\$135,159.41)
ANCILLARY SERVICES	\$1,731,643.34	\$1,657,058.32	\$1,639,625.75	\$1,668,660.81	\$1,644,625.10	\$1,582,385.84	\$1,573,475.52
TCC	\$651,554.46	\$212,892.37	\$363,075.53	\$421,911.79	\$415,070.33	\$288,107.15	\$42,203.63
	19	20	21	22	23	24	25
ENERGY	\$7,134,630.32	\$7,315,317.71	\$6,612,846.83	\$6,641,428.80	\$9,727,206.65	\$9,629,365.80	\$12,517,875.25
TRANSMISSION SERVICE	\$1,109,986.20	\$1,185,431.24	\$1,029,213.30	\$887,116.64	\$1,495,756.54	\$1,377,362.30	\$1,553,813.39
UPLIFT	\$14,230.11	\$35,122.80	\$28,674.92	\$14,237.24	\$29,489.96	\$25,968.55	\$64,054.72
RESIDUALS	(\$213,382.55)	(\$220,241.06)	(\$125,872.46)	(\$172,014.67)	(\$253,886.00)	(\$295,789.30)	(\$364,222.75)
ANCILLARY SERVICES	\$1,712,974.09	\$1,698,581.01	\$1,651,374.62	\$1,629,318.55	\$1,858,337.89	\$1,830,993.29	\$1,952,979.21
TCC	\$393,507.52	\$492,461.40	\$323,605.01	\$22,873.13	\$937,696.91	\$788,115.76	\$1,101,529.81
	26	27	28	29	30		
ENERGY	\$13,817,248.75	\$12,534,387.76	\$13,067,641.06	\$14,079,886.42	\$14,350,912.50		
TRANSMISSION SERVICE	\$1,955,424.69	\$1,875,117.44	\$1,592,518.07	\$1,620,770.82	\$1,427,543.17		
UPLIFT	\$95,932.20	\$47,215.52	\$54,592.31	\$33,236.36	\$63,475.37		
RESIDUALS	(\$150,483.04)	(\$178,906.58)	(\$294,636.85)	(\$28,854.14)	(\$247,583.02)		
ANCILLARY SERVICES	\$1,953,874.31	\$1,884,919.75	\$1,901,828.14	\$2,031,869.08	\$2,031,303.22		
TCC	\$1,793,454.50	\$1,411,911.21	\$627,754.91	\$794,752.93	\$385,807.68		

