



# **NEETNY Local Transmission Plan Update**

**NYISO ESPWG/TPAS**

**11/21/2023**

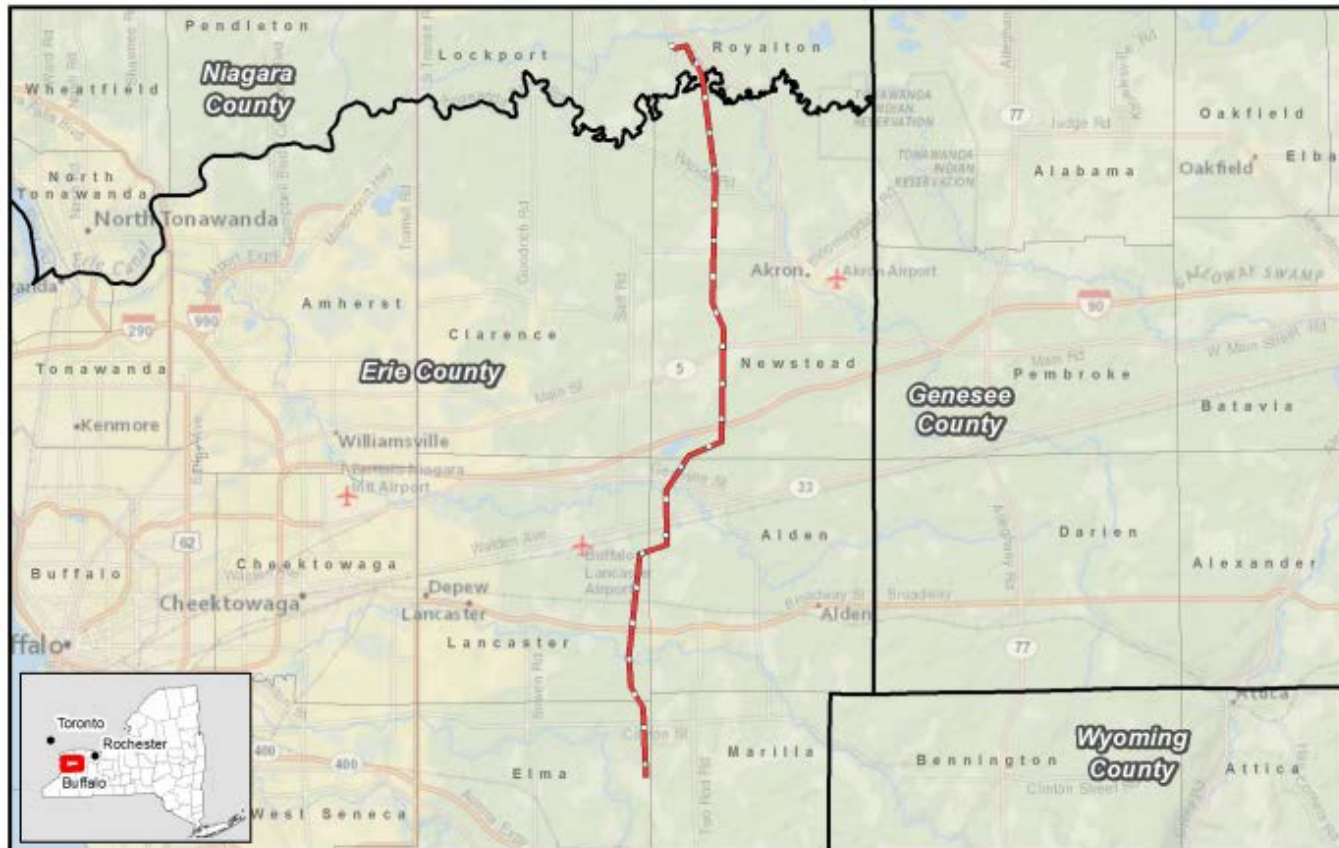
# NextEra Energy Transmission New York (NEETNY) Background

- NextEra Energy Transmission New York (NEETNY) is a subsidiary of NextEra Energy Transmission
- NextEra Energy Transmission is the leading national developer of large electric transmission projects
- NEETNY is a registered Transmission Owner in NPCC
- NEETNY is a registered Transmission Planner in NPCC
- NEETNY has no load serving obligations

**NEETNY was selected in 2017 to build the Empire State Line**

# NEETNY Assets

NEETNY assets include the 20 mile, 345kV Empire State Line with two new substations which was completed and went in-service in June 2022



# NEETNY Assets

## NEETNY assets include:

- **Dysinger 345 kV substation**
- **East Stolle Road 345 kV substation**
- **20 mile, 345kV transmission line from East Stolle Rd to Dysinger substation**
- **PAR at Dysinger 345 kV substation**
- **Shunt Reactor at East Stolle Rd 345 kV substation**

# Local Transmission Plan Projects

## NEETNY LTP

- **Currently NEEETNY has no identified projects in its Local Transmission Plan**

# Comments / Questions

Please submit questions to:

**Bharath Annabathina**

**[Bharath.Annabathina@nexteraenergy.com](mailto:Bharath.Annabathina@nexteraenergy.com)**