

Operations Performance Metrics Monthly Report



November 2023 Report

Operations & Reliability Department New York Independent System Operator

Prepared by NYISO Operations Analysis and Services, based on settlements initial invoice data collected on or before December 8, 2023.

Table of Contents

- ◆ **Highlights**
 - *Operations Performance*

- ◆ **Reliability Performance Metrics**
 - *Alert State Declarations*
 - *Major Emergency State Declarations*
 - *IROL Exceedance Times*
 - *Balancing Area Control Performance*
 - *Reserve Activations*
 - *Disturbance Recovery Times*
 - *Load Forecasting Performance*
 - *Wind Forecasting Performance*
 - *Wind Performance and Curtailments*
 - *BTM Solar Performance*
 - *BTM Solar Forecasting Performance*
 - *Net Wind and Solar Performance*
 - *Net Load Forecasting Performance*
 - *Net Load Ramp Trends*
 - *DAM Capacity Unavailable*
 - *Lake Erie Circulation and ISO Schedules*

- ◆ **Broader Regional Market Performance Metrics**
 - *PAR Interconnection Congestion Coordination Monthly Value*
 - *PAR Interconnection Congestion Coordination Daily Value*
 - *Regional Generation Congestion Coordination Monthly Value*
 - *Regional Generation Congestion Coordination Daily Value*
 - *Regional RT Scheduling - PJM Monthly Value*
 - *Regional RT Scheduling - PJM Daily Value*

- ◆ **Market Performance Metrics**
 - *Monthly Statewide Uplift Components and Rate*
 - *RTM Congestion Residuals Monthly Trend*
 - *RTM Congestion Residuals Daily Costs*
 - *RTM Congestion Residuals Event Summary*
 - *RTM Congestion Residuals Cost Categories*
 - *DAM Congestion Residuals Monthly Trend*
 - *DAM Congestion Residuals Daily Costs*
 - *DAM Congestion Residuals Cost Categories*
 - *NYCA Unit Uplift Components Monthly Trend*
 - *NYCA Unit Uplift Components Daily Costs*
 - *Local Reliability Costs Monthly Trend & Commitment Hours*
 - *TCC Monthly Clearing Price with DAM Congestion*
 - *ICAP Spot Market Clearing Price*
 - *UCAP Awards*

November 2023 Operations Performance Highlights

Monthly Peak Load	Monthly Minimum Load	Winter 2023-2024 Peak	All-time Winter Peak
11/29/2023 HB 17 21,305 MW	11/05/2023 HB 04 12,471 MW	11/29/2023 HB 17 21,305 MW	01/07/2014 HB 18 25,738 MW

- 0.7 hours of Thunderstorm Alerts were declared
- 0.0 hours of NERC TLR level 3 curtailment
- NYISO deployed Constraint Specific Transmission Shortage Pricing on 11/14/2023.
- NYISO deployed Solar Demand Forecasting Enhancements on 11/28/2023.
- Revised Total East Stability, Central East Stability and Central East Voltage Collapse limits due to topology changes associated with AC Transmission Public Policy Segment A buildout were employed in EMS/BMS. The limits were presented and approved for use at the September Operating Committee meeting.

Installed Wind, Solar and Energy Storage Resource Nameplate Values:

Land-Based Wind	Behind-the-Meter Solar	Front-of-the-Meter Solar	Energy Storage Resource (ESR)
2,521 MW	5,018 MW	174 MW	63 MW

Estimated production cost savings associated with the Broader Regional Market initiatives:

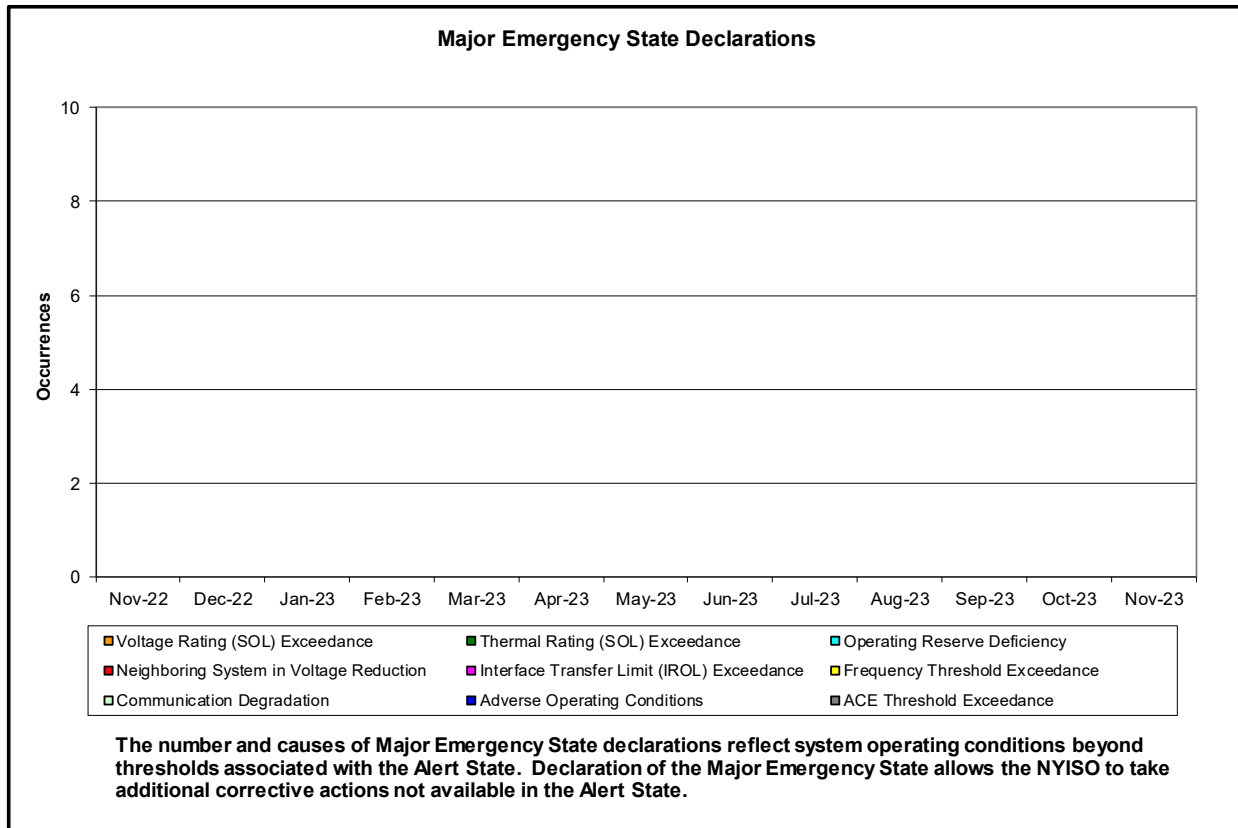
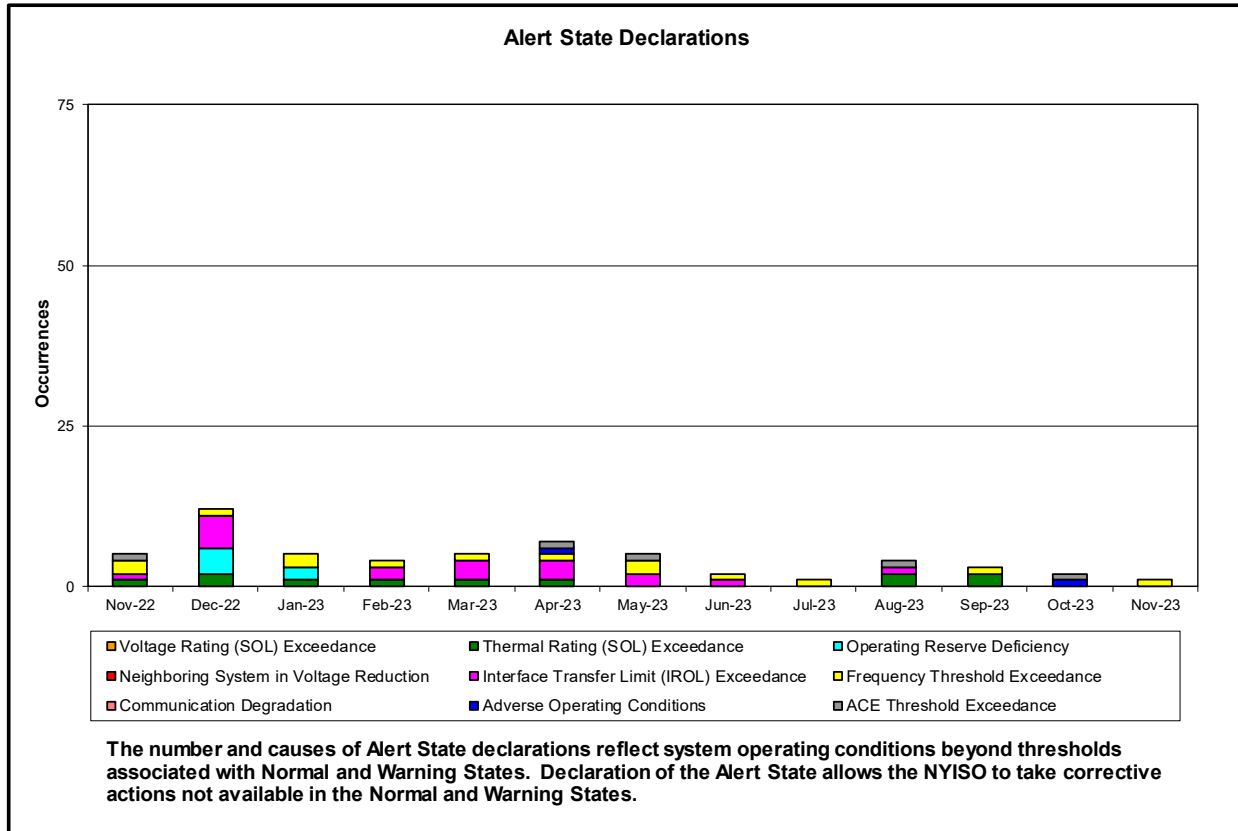
	Current Month Value (\$M)	Year-to-Date Value (\$M)
NY Savings from PJM-NY Congestion Coordination	\$0.96	\$11.14
NY Savings from PJM-NY Coordinated Transaction Scheduling	(\$0.08)	\$1.60
NY Savings from NE-NY Coordinated Transaction Scheduling	\$0.63	(\$0.70)
Total NY Savings	\$1.51	\$12.04
Regional Savings from PJM-NY Coordinated Transaction Scheduling	\$0.55	\$7.01
Regional Savings from NE-NY Coordinated Transaction Scheduling	\$0.11	\$1.12
Total Regional Savings	\$0.66	\$8.13

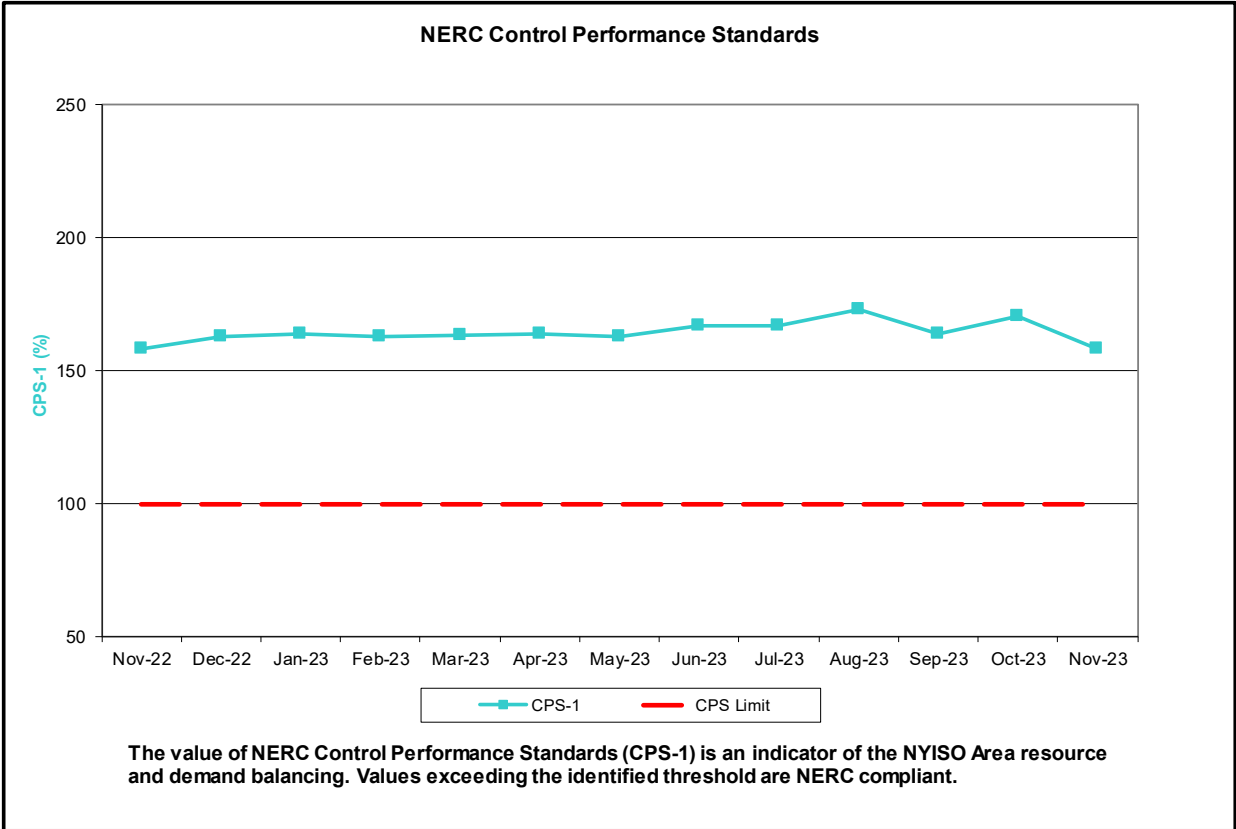
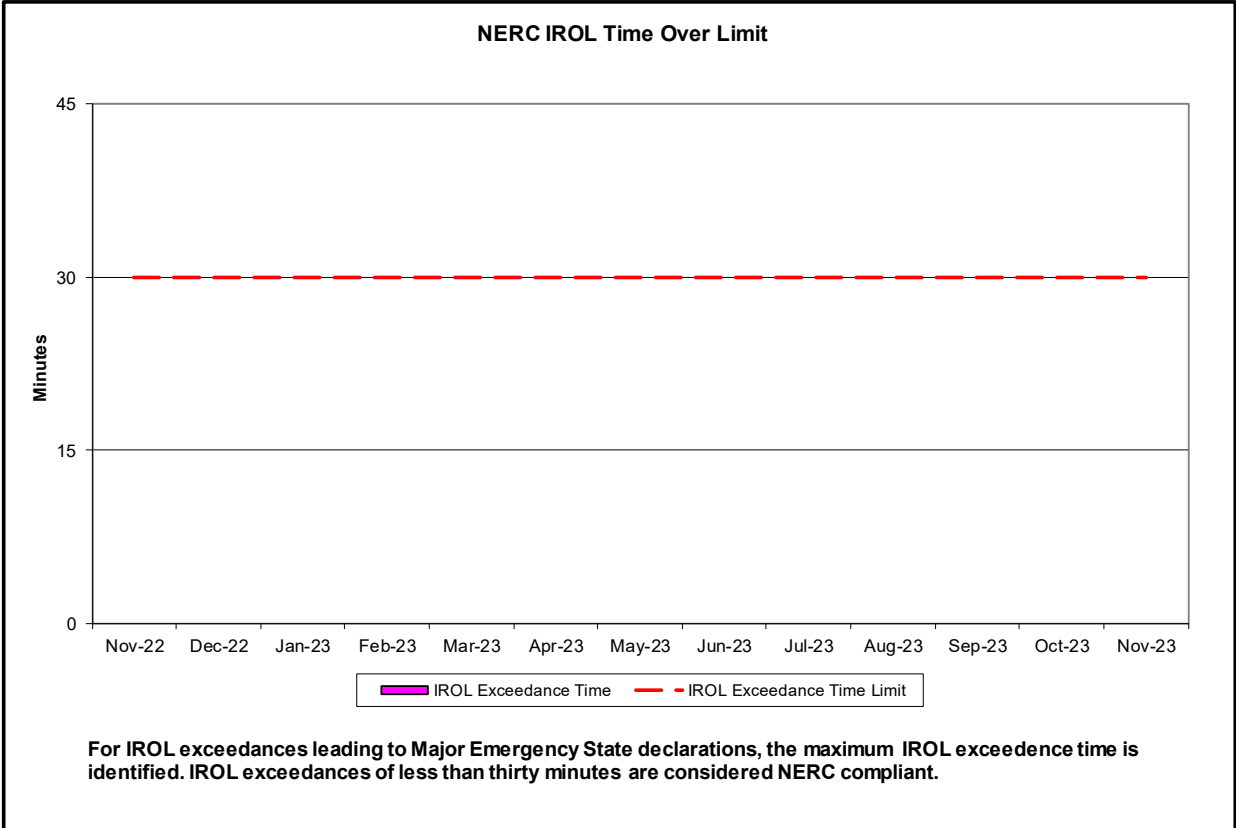
- Statewide uplift cost monthly average was (\$0.19)/MWh.
- The following table identifies the Monthly ICAP spot market prices and the price delta.

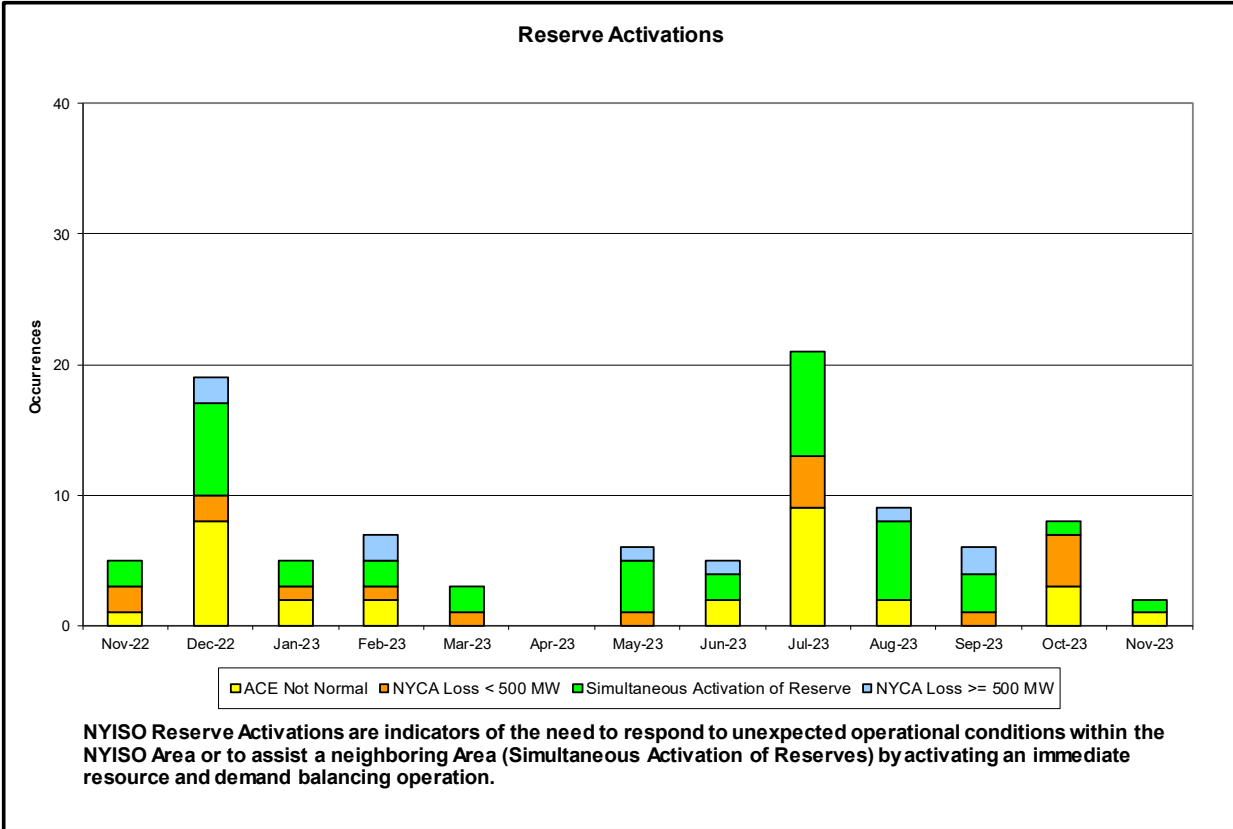
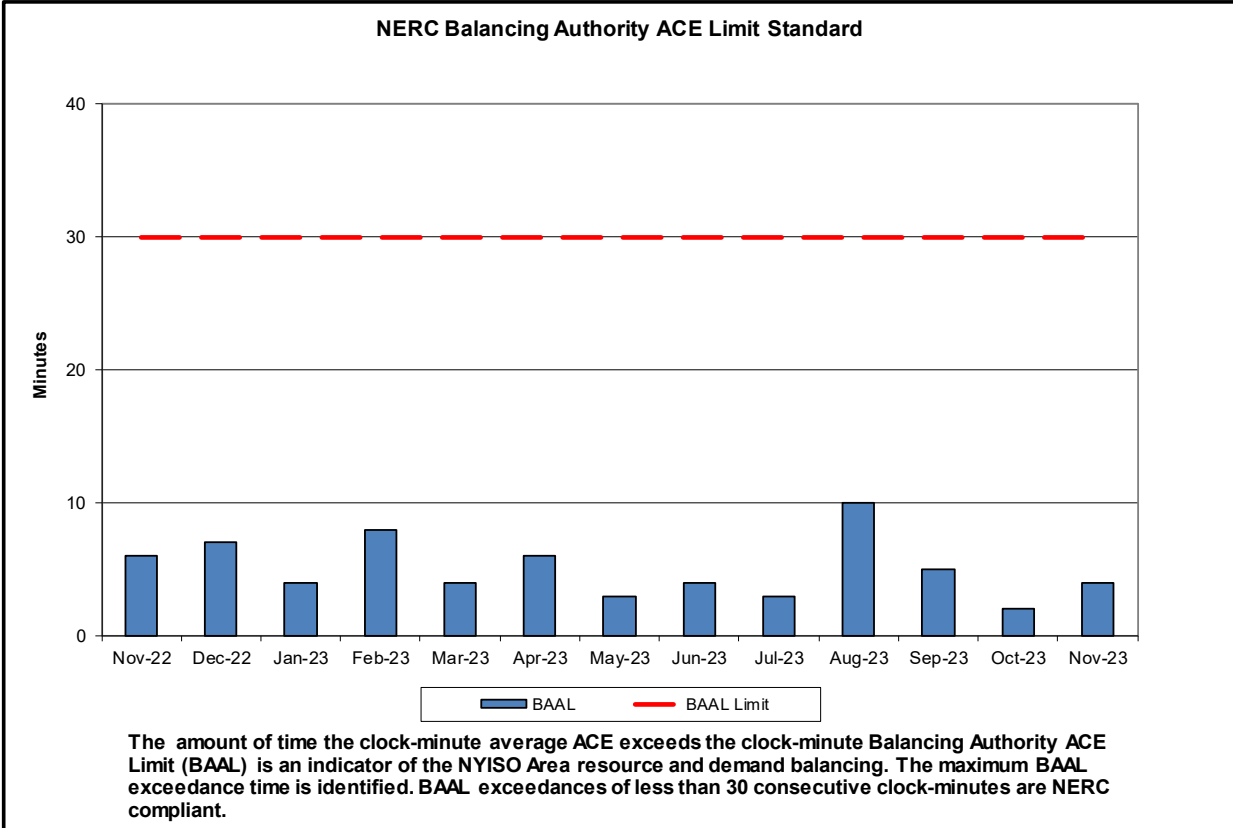
Spot Auction Price Results	NYCA	Lower Hudson Valley Zones	New York City Zone	Long Island Zone
December 2023 Spot Price	\$3.23	\$3.23	\$12.81	\$3.23
November 2023 Spot Price	\$0.95	\$1.28	\$12.83	\$0.95
Delta	\$2.28	\$1.95	(\$0.02)	\$2.28

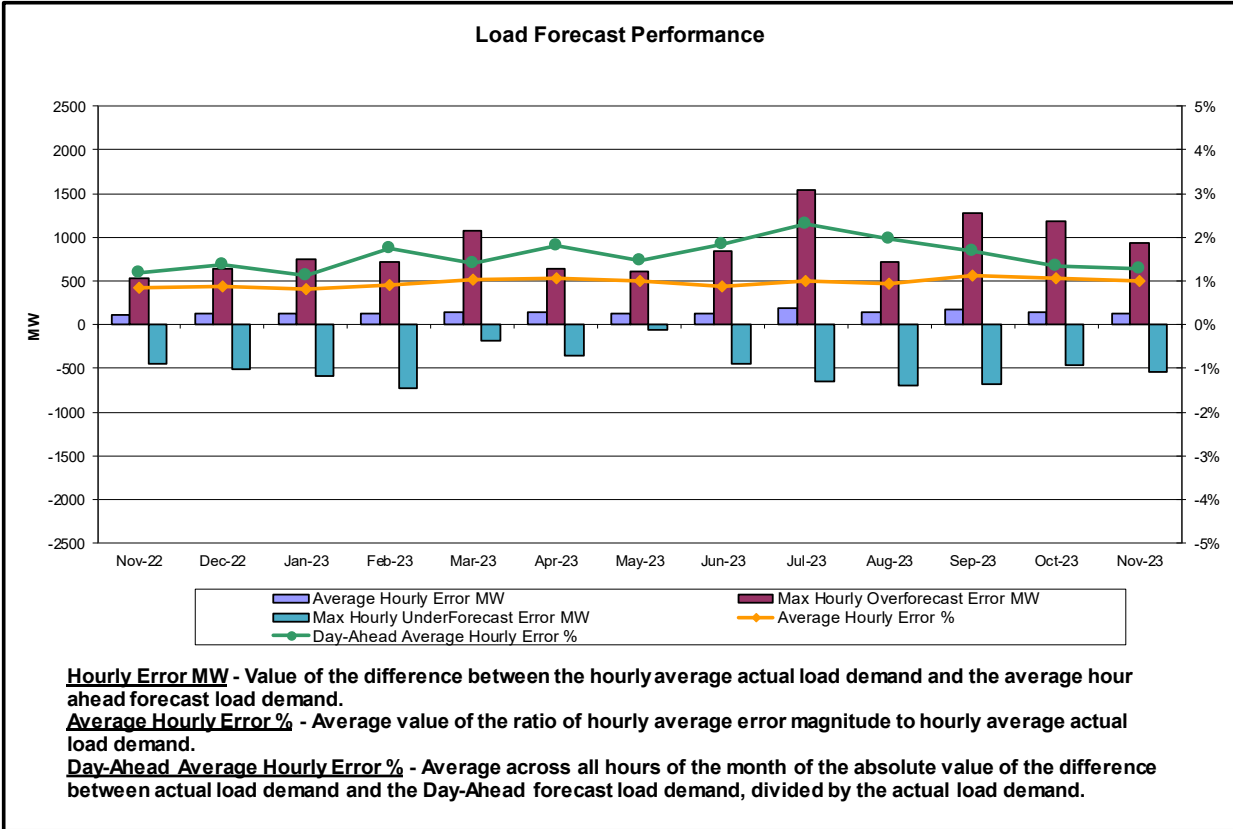
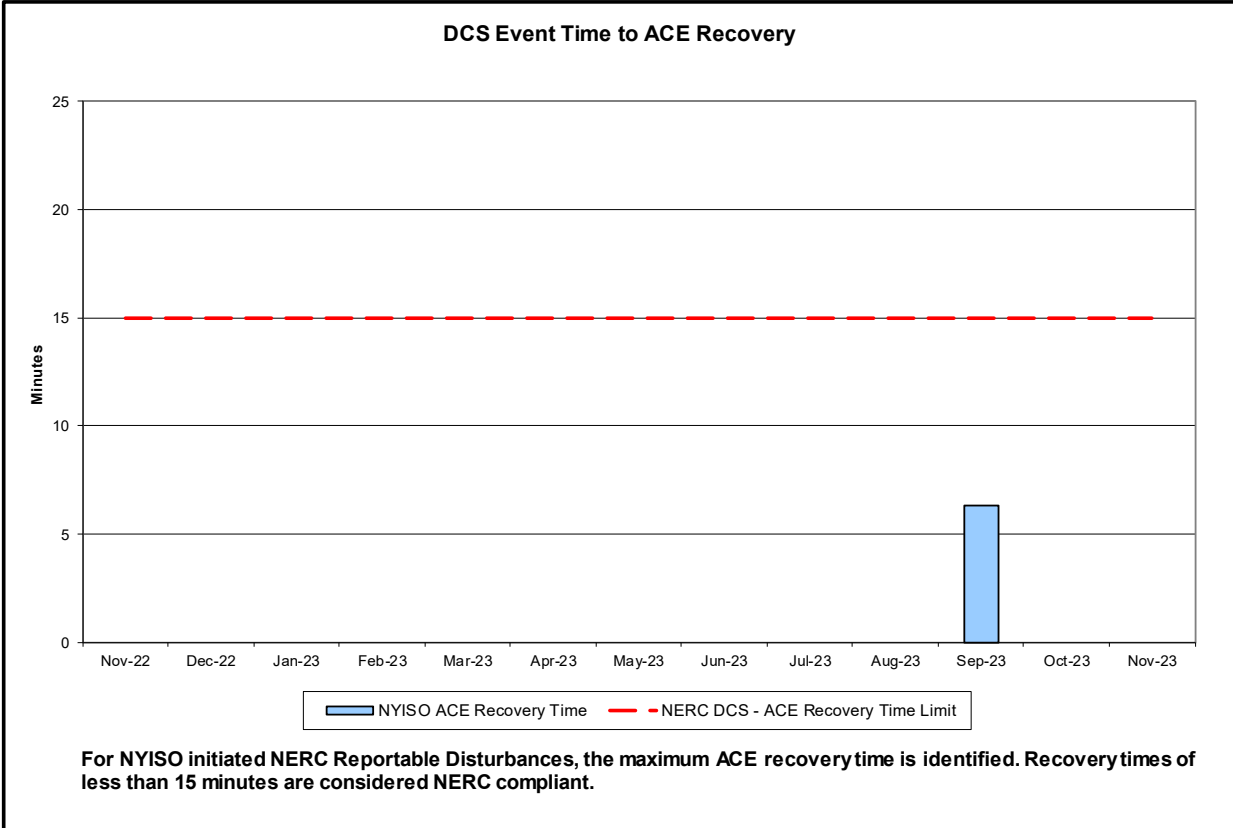
- Price changes were driven by a decrease in imports to NYCA.

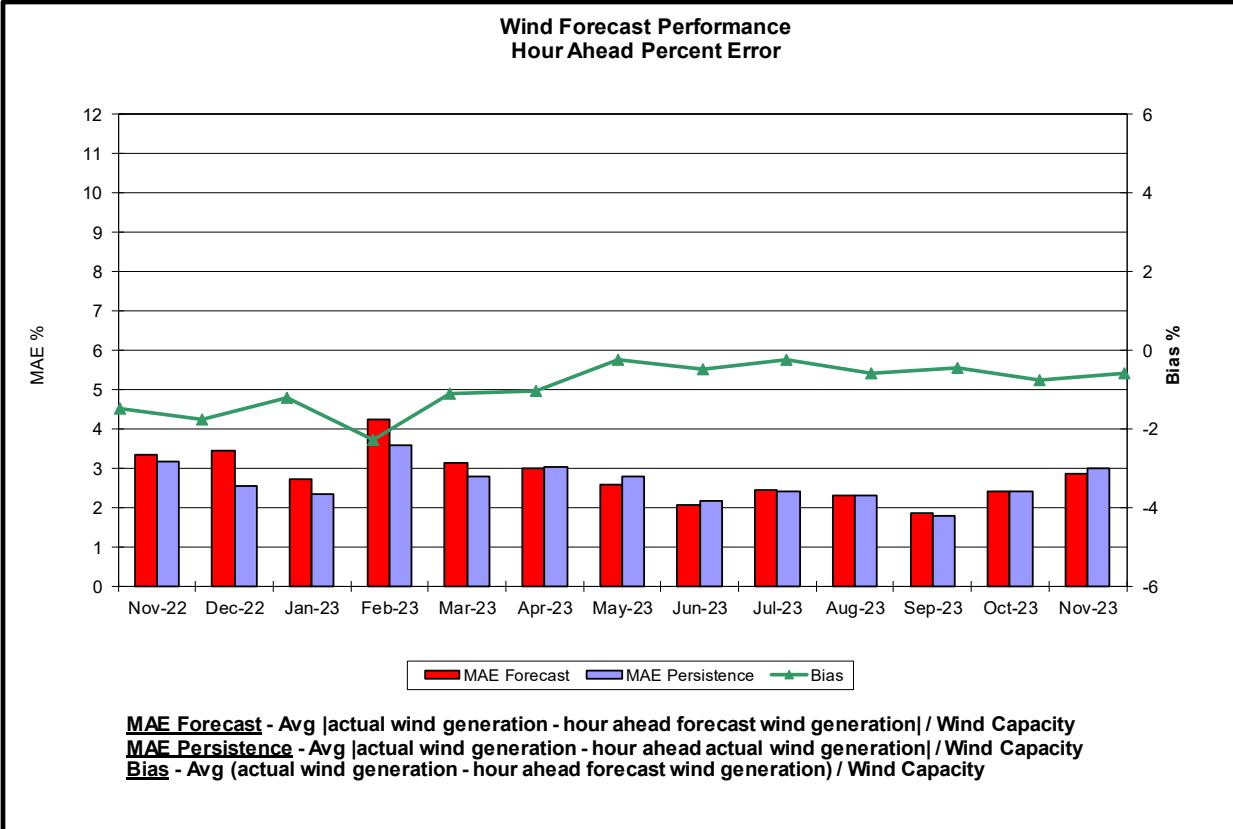
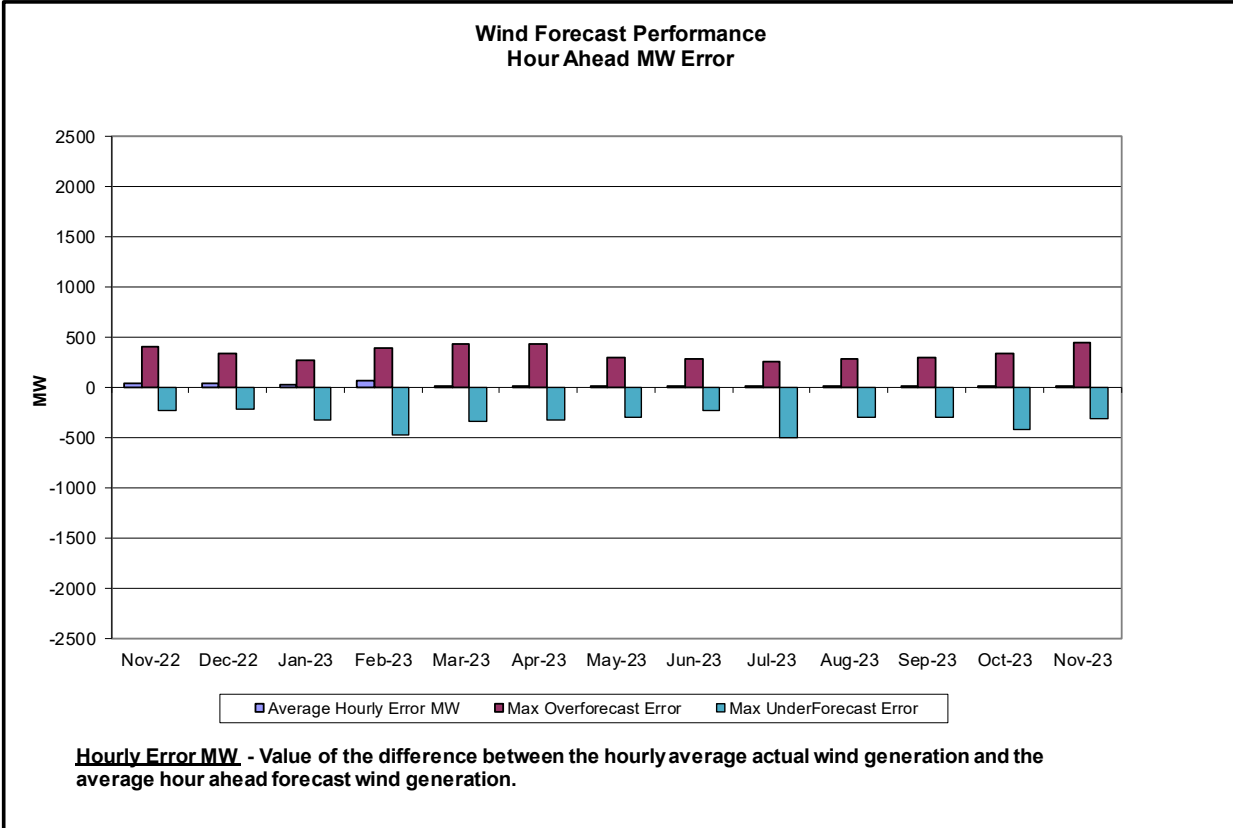
Reliability Performance Metrics

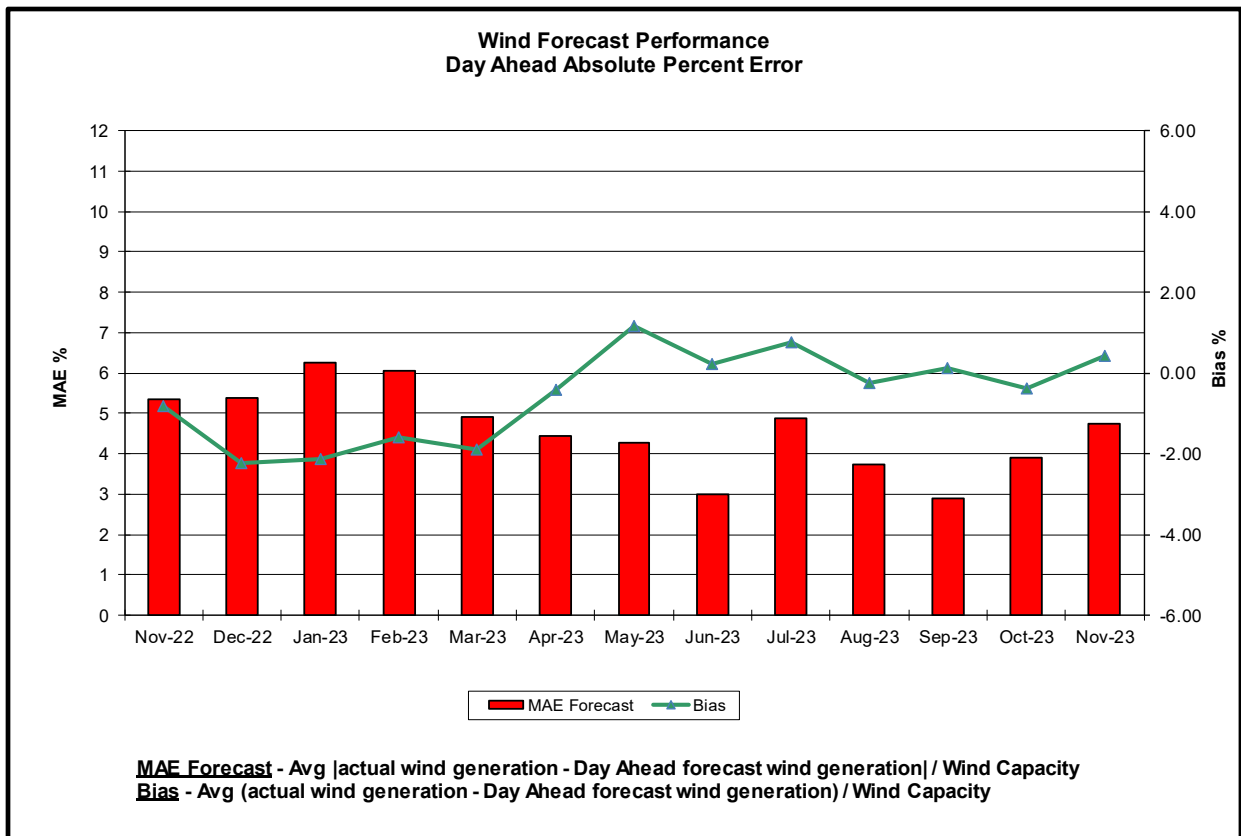
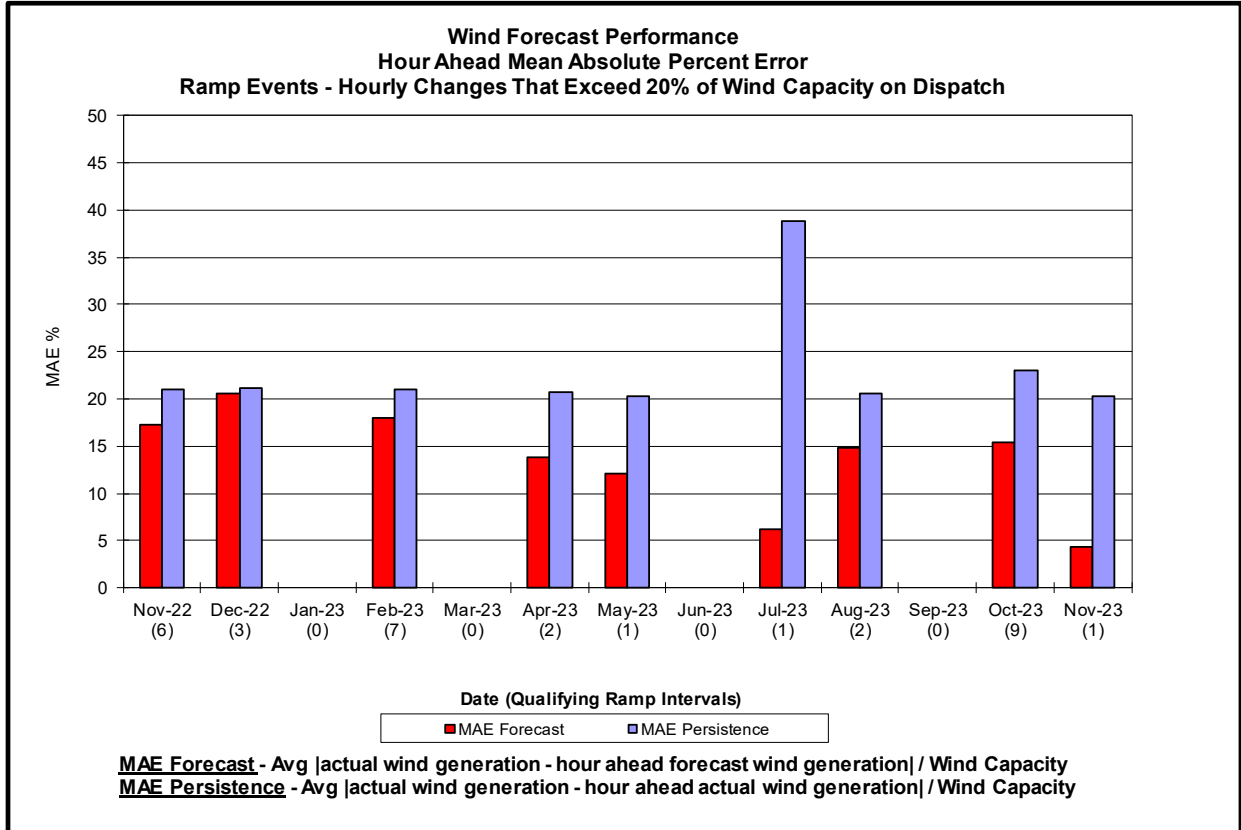


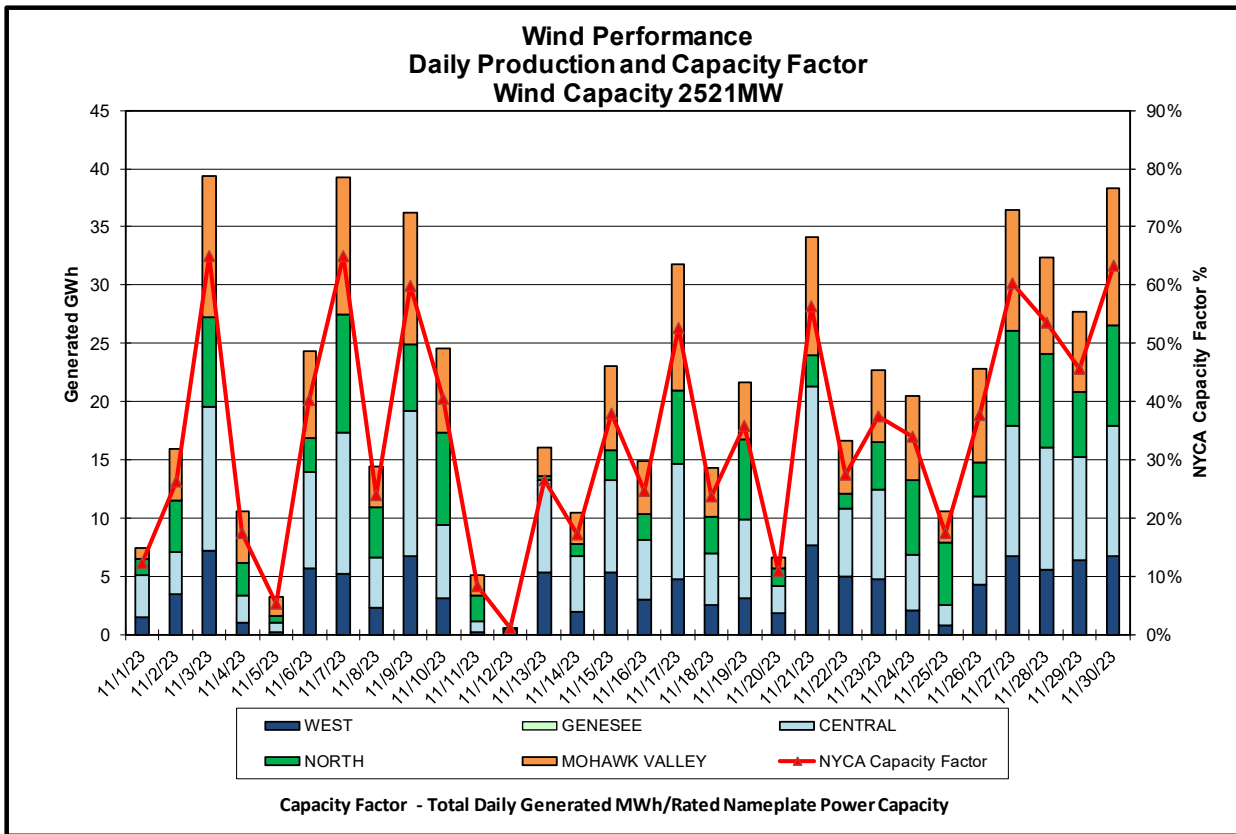
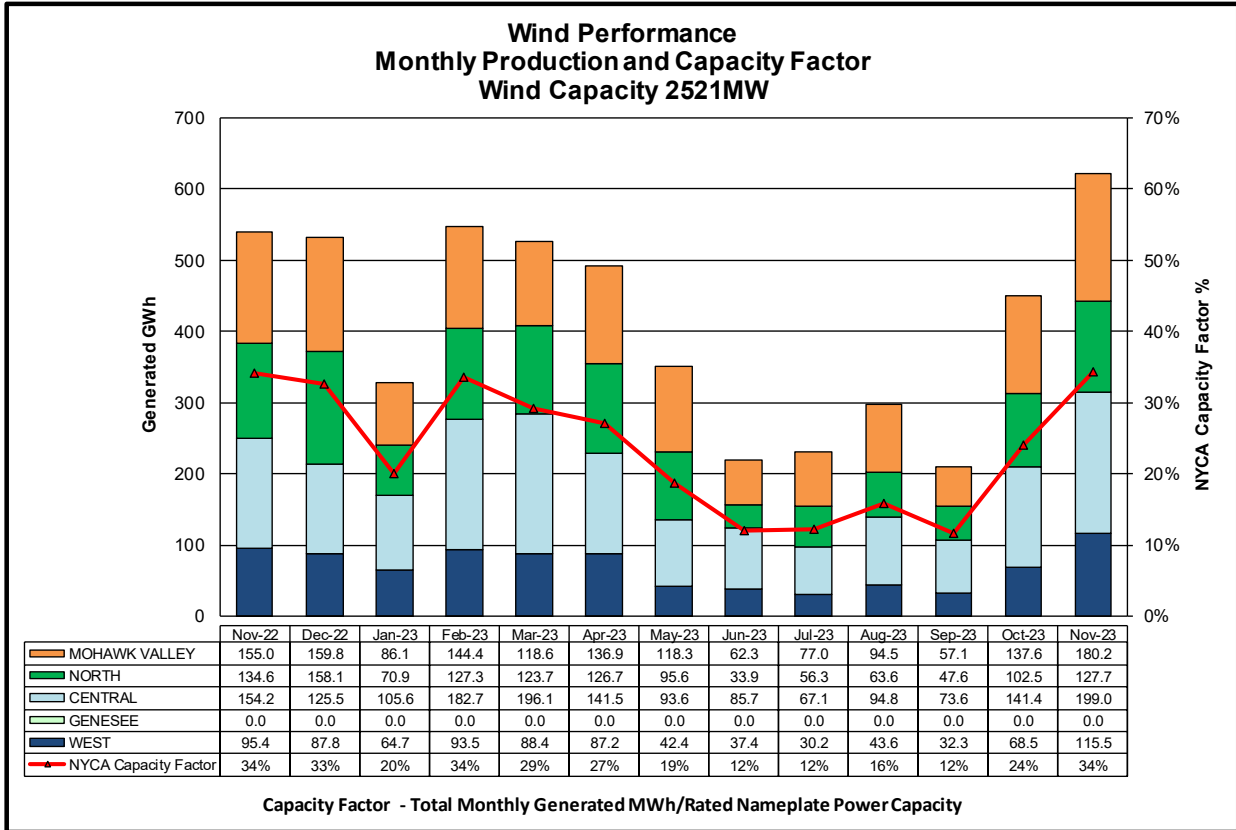


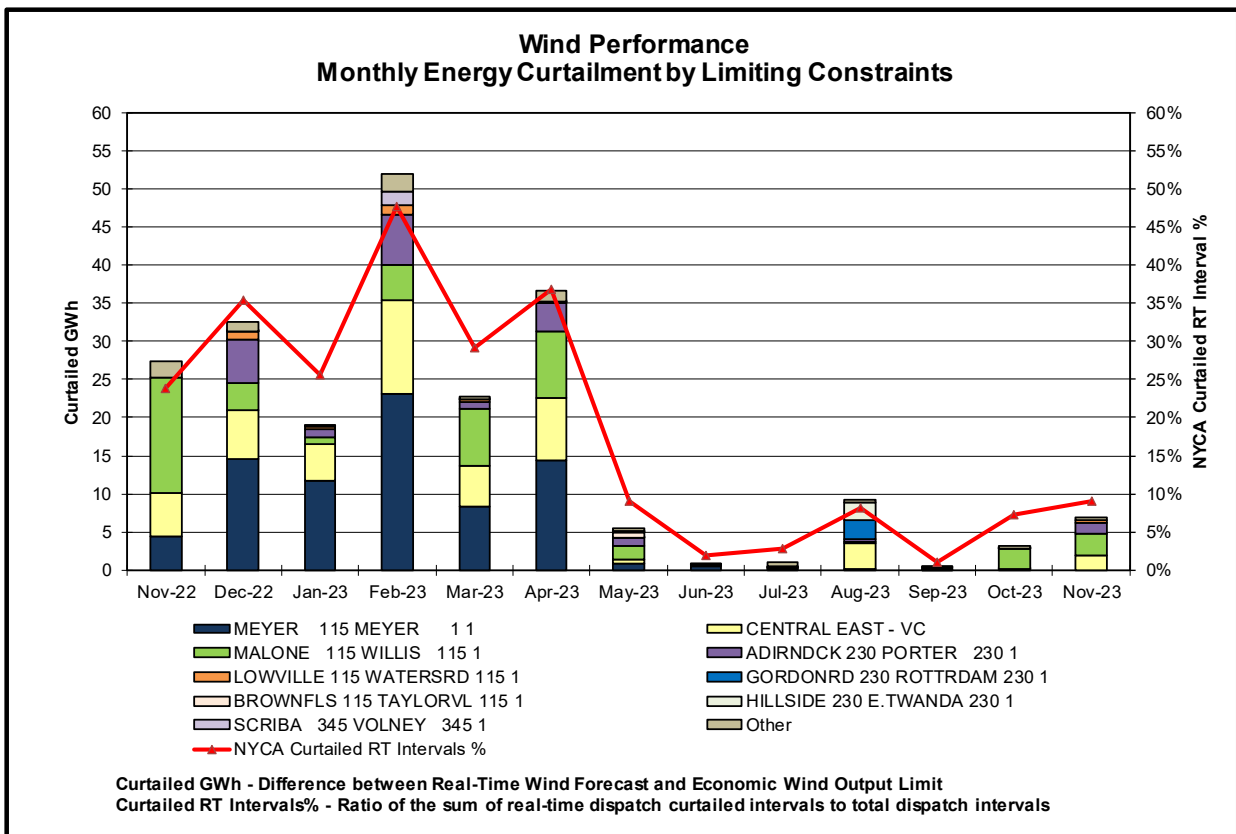
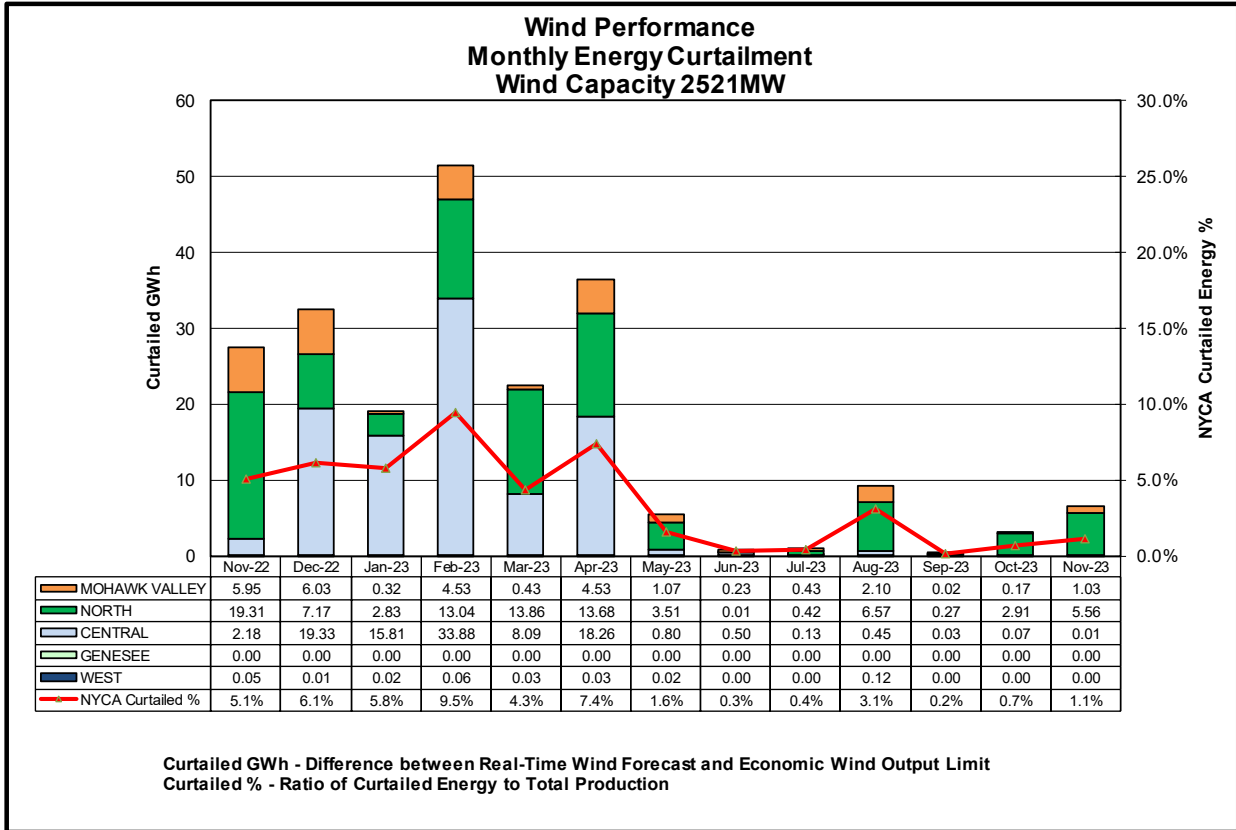


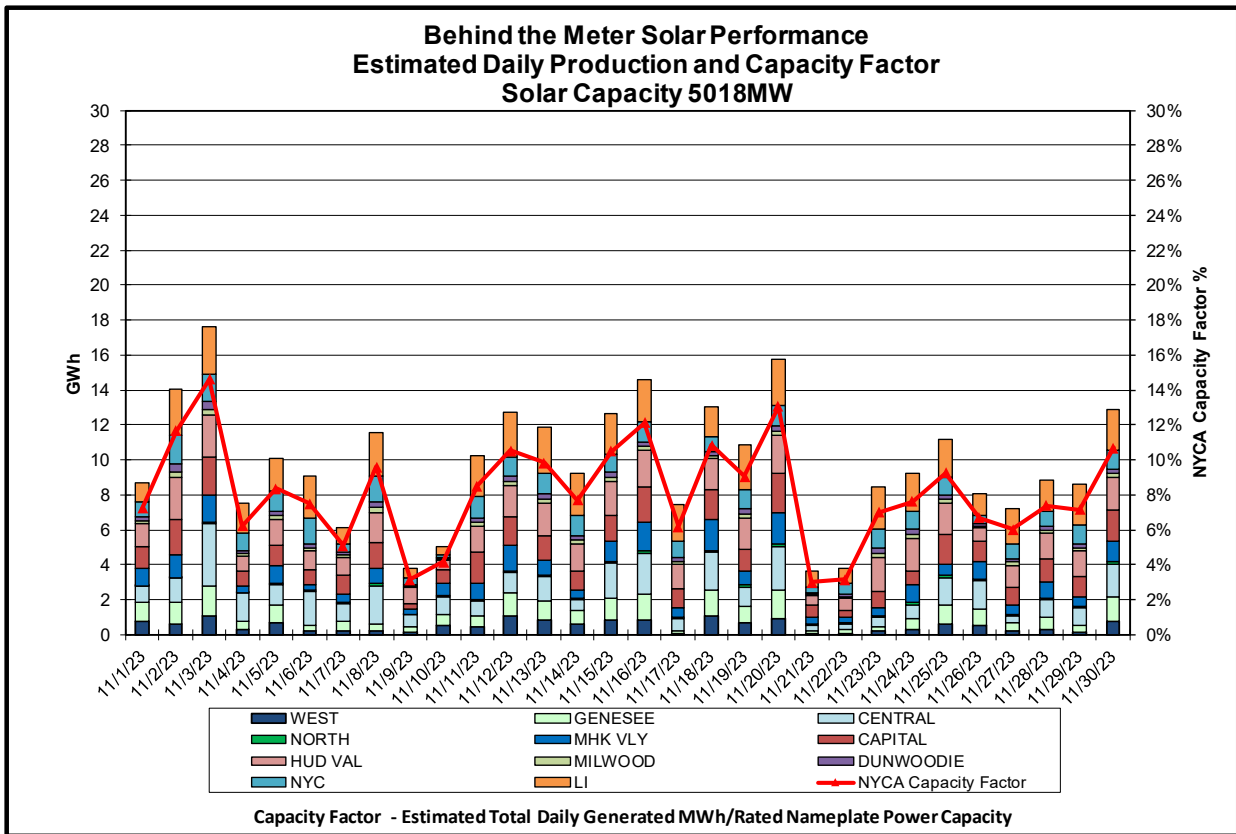
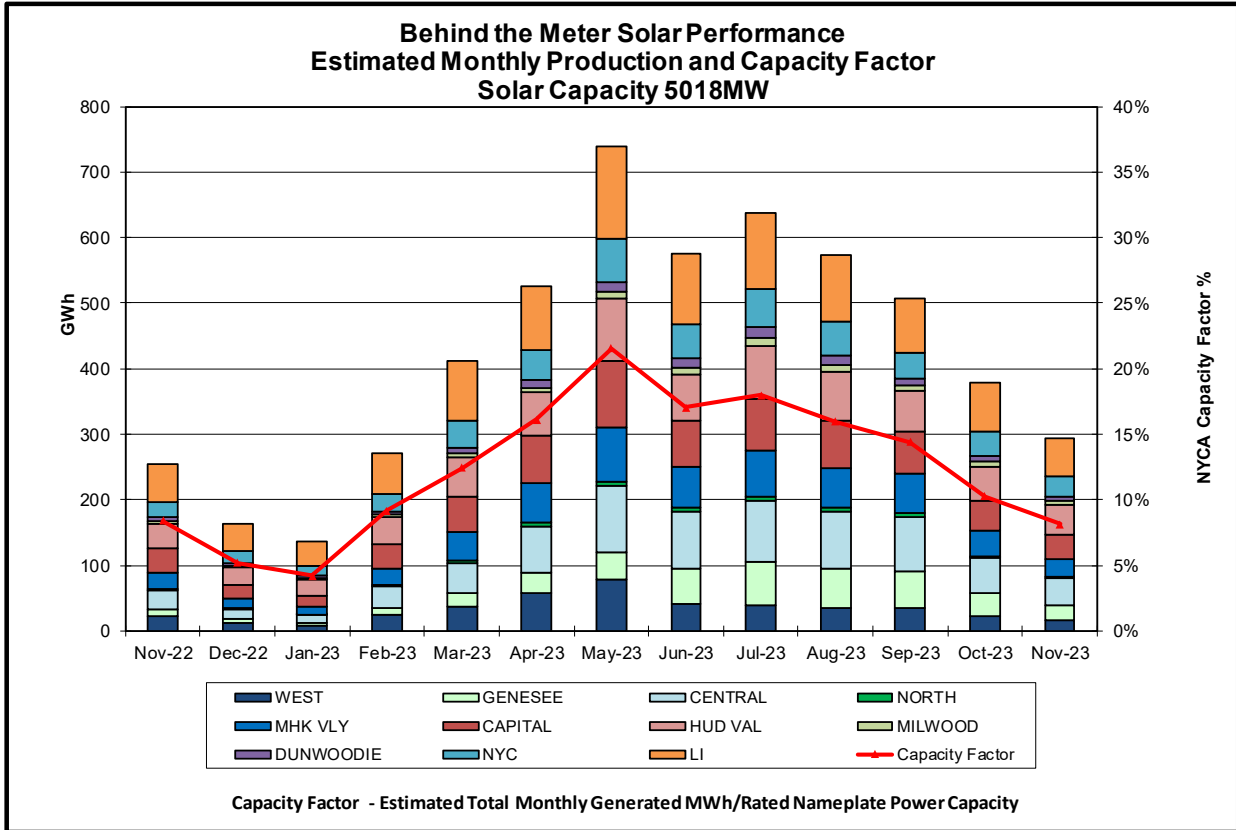


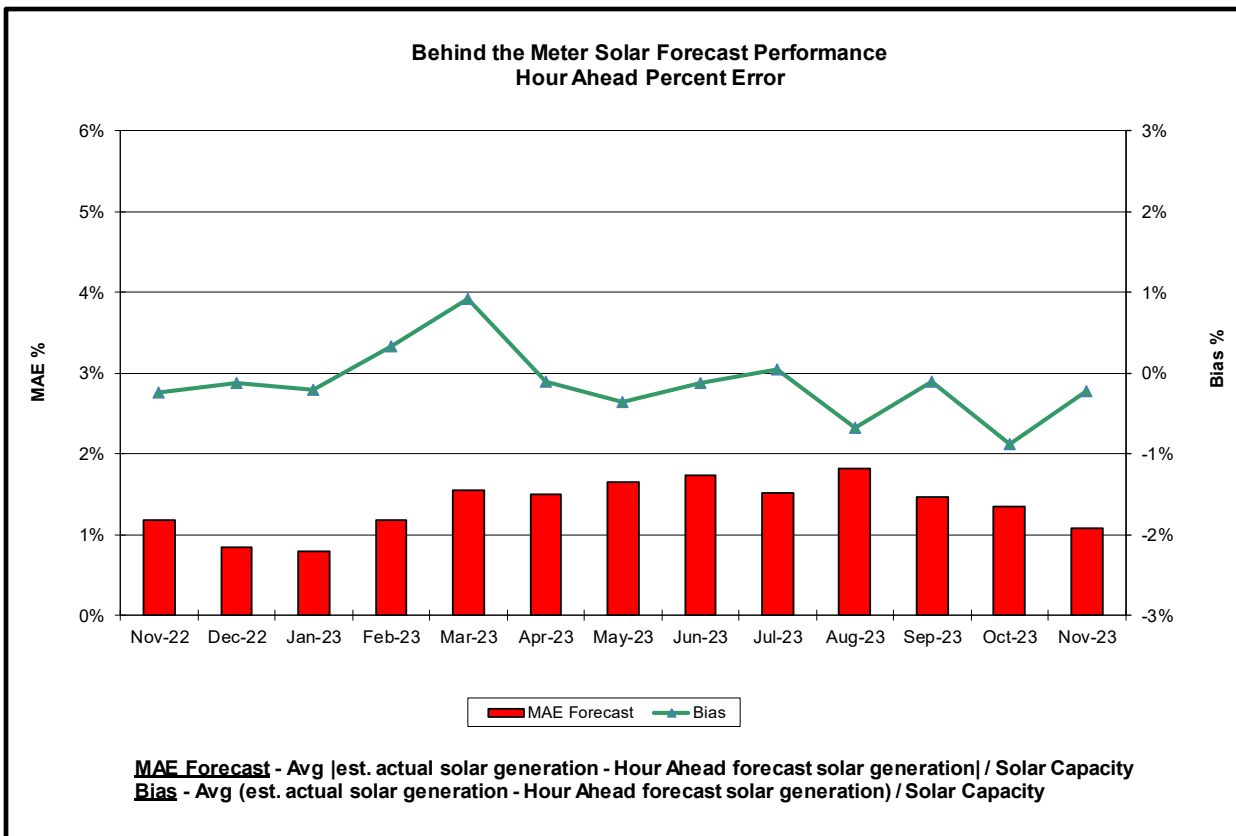
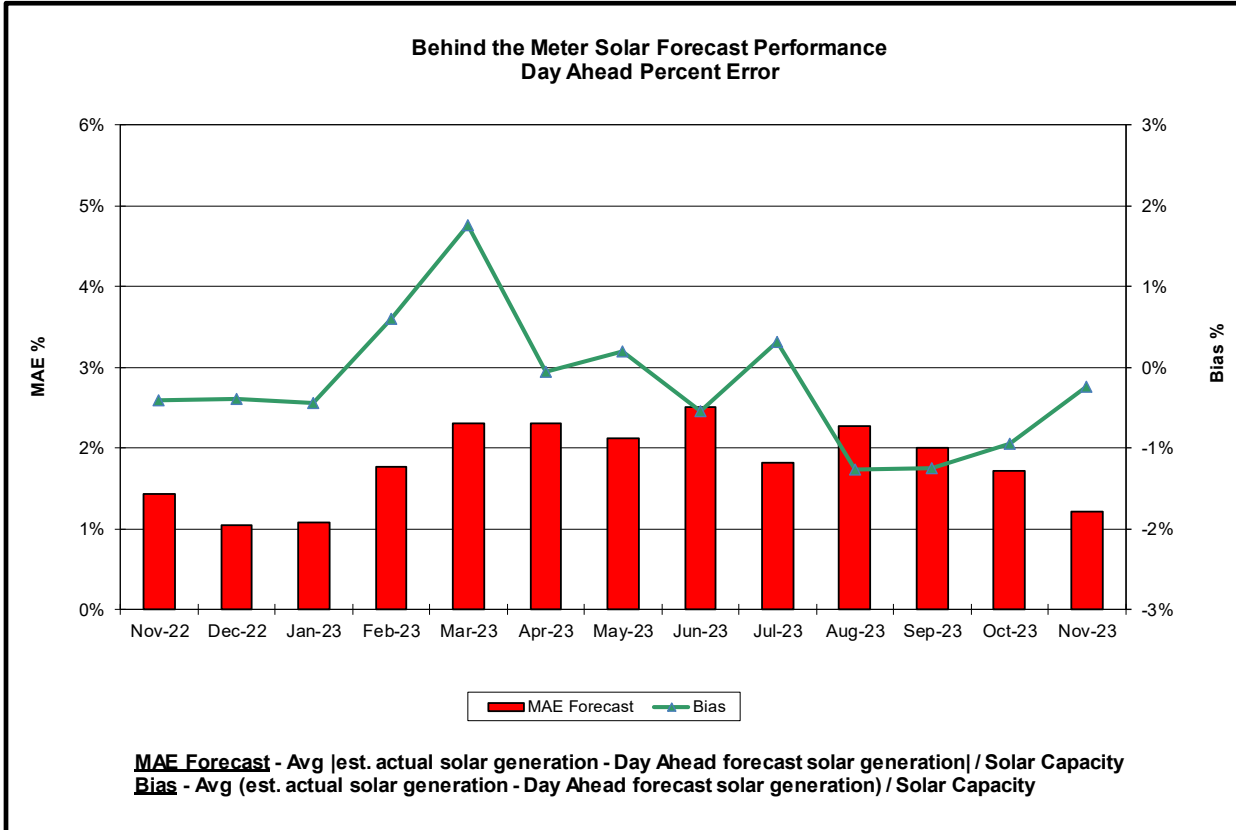


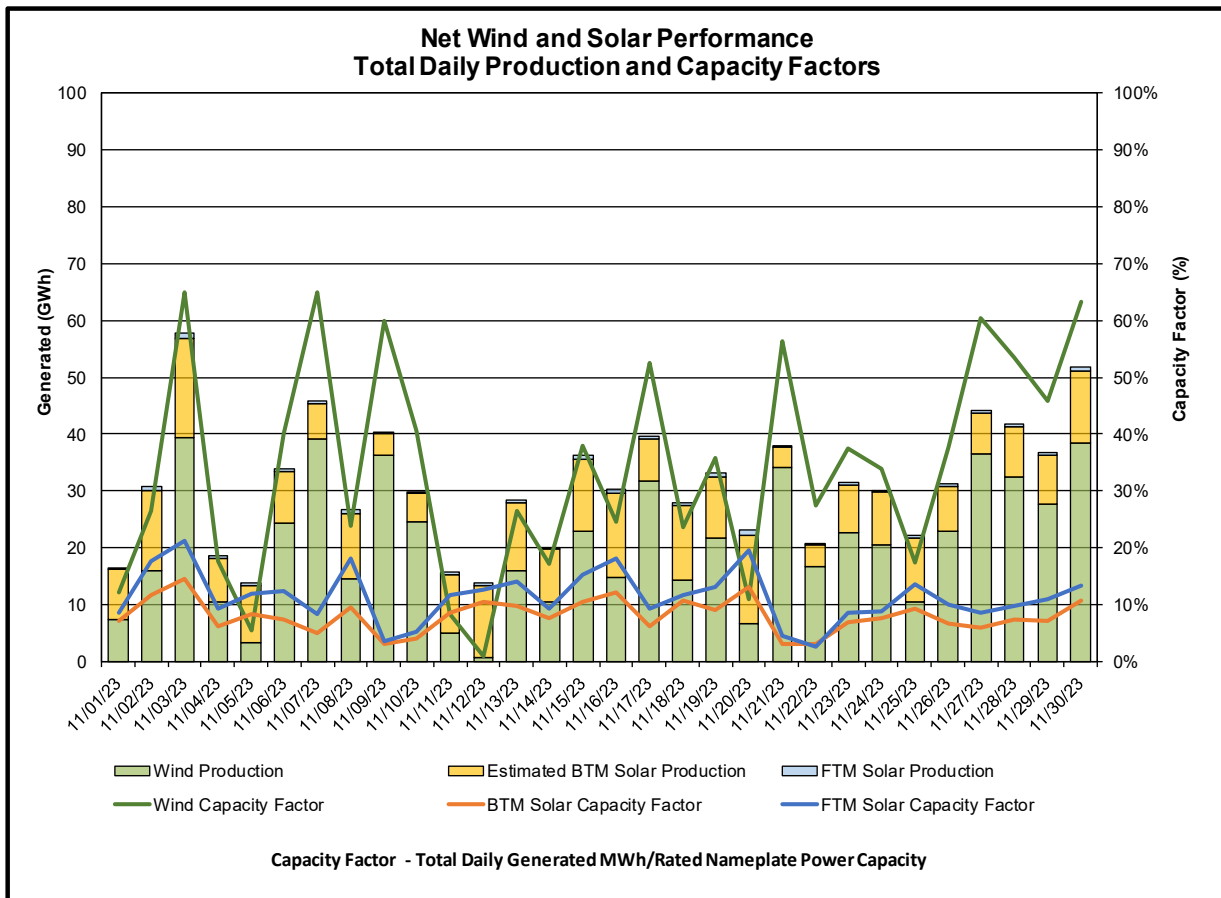
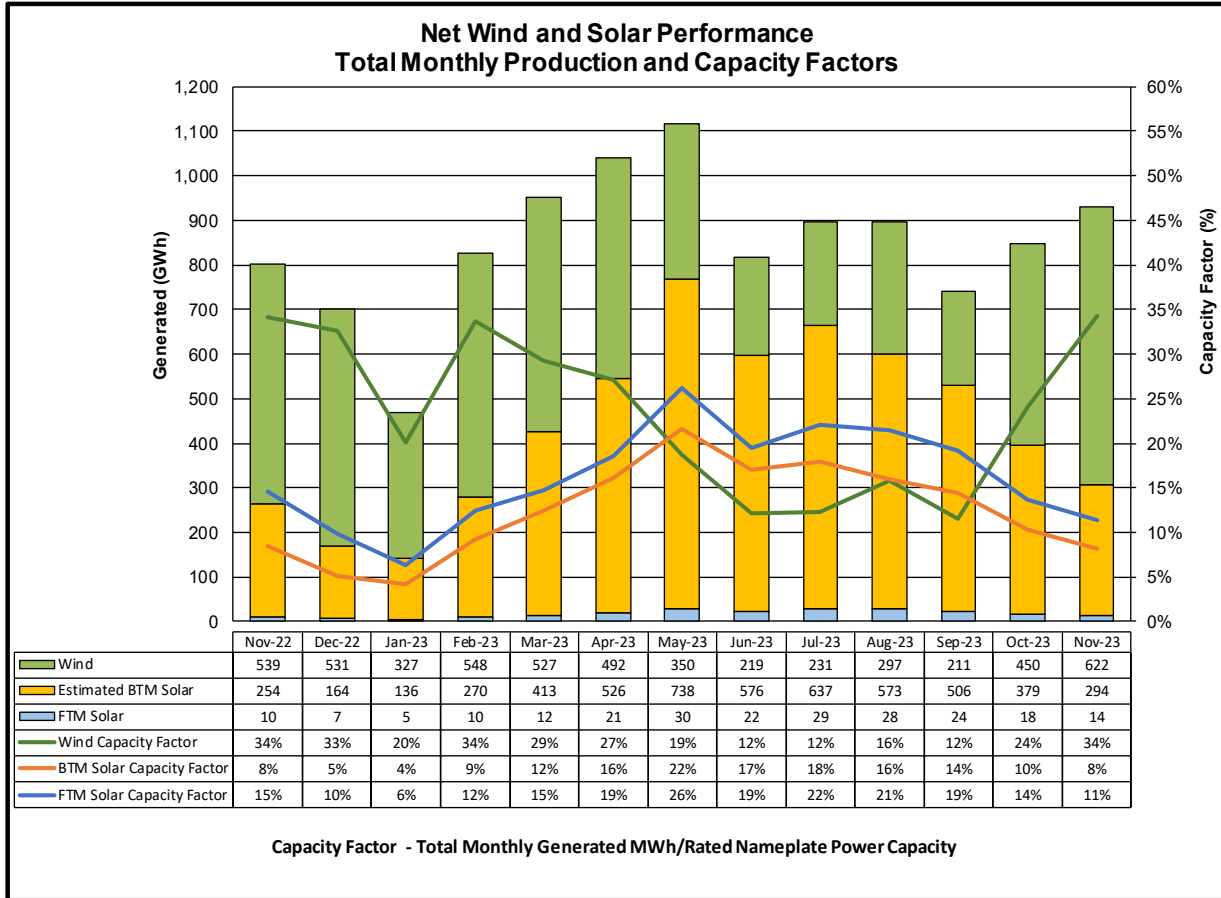


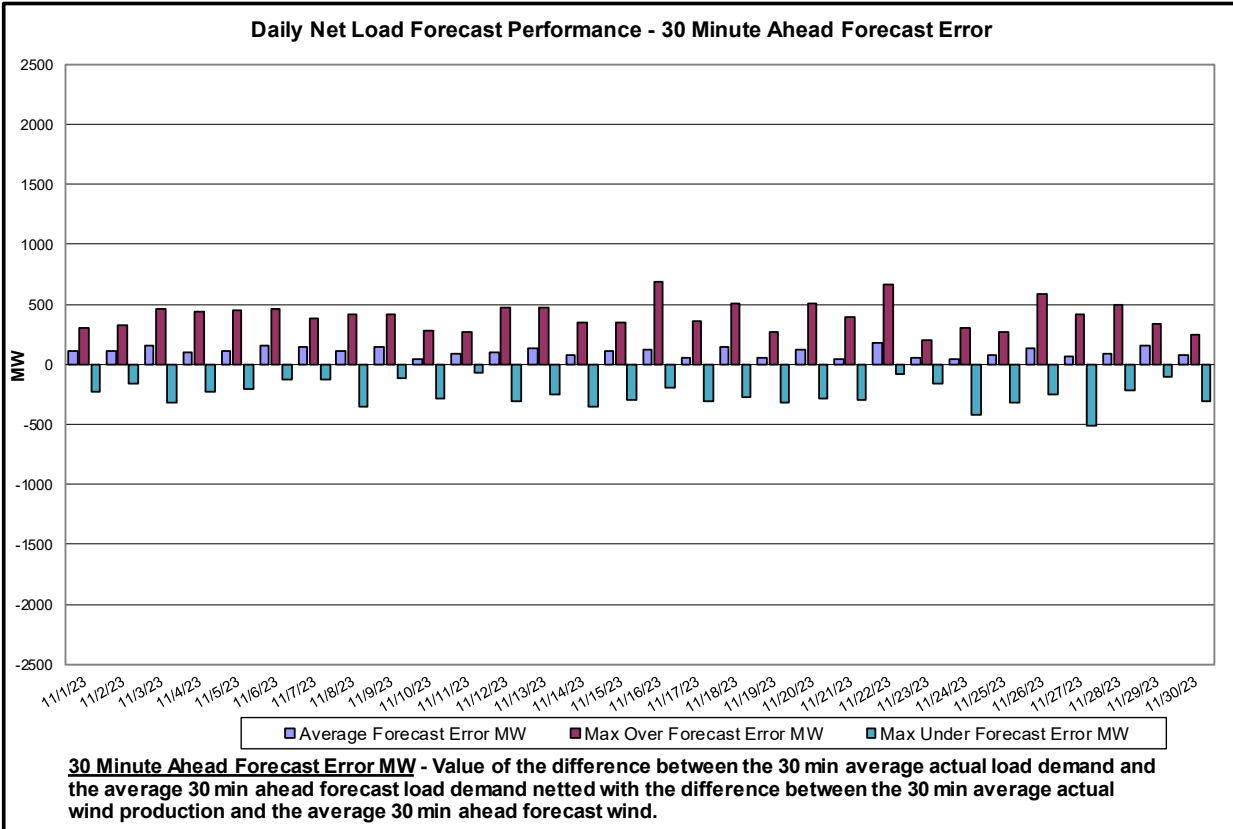
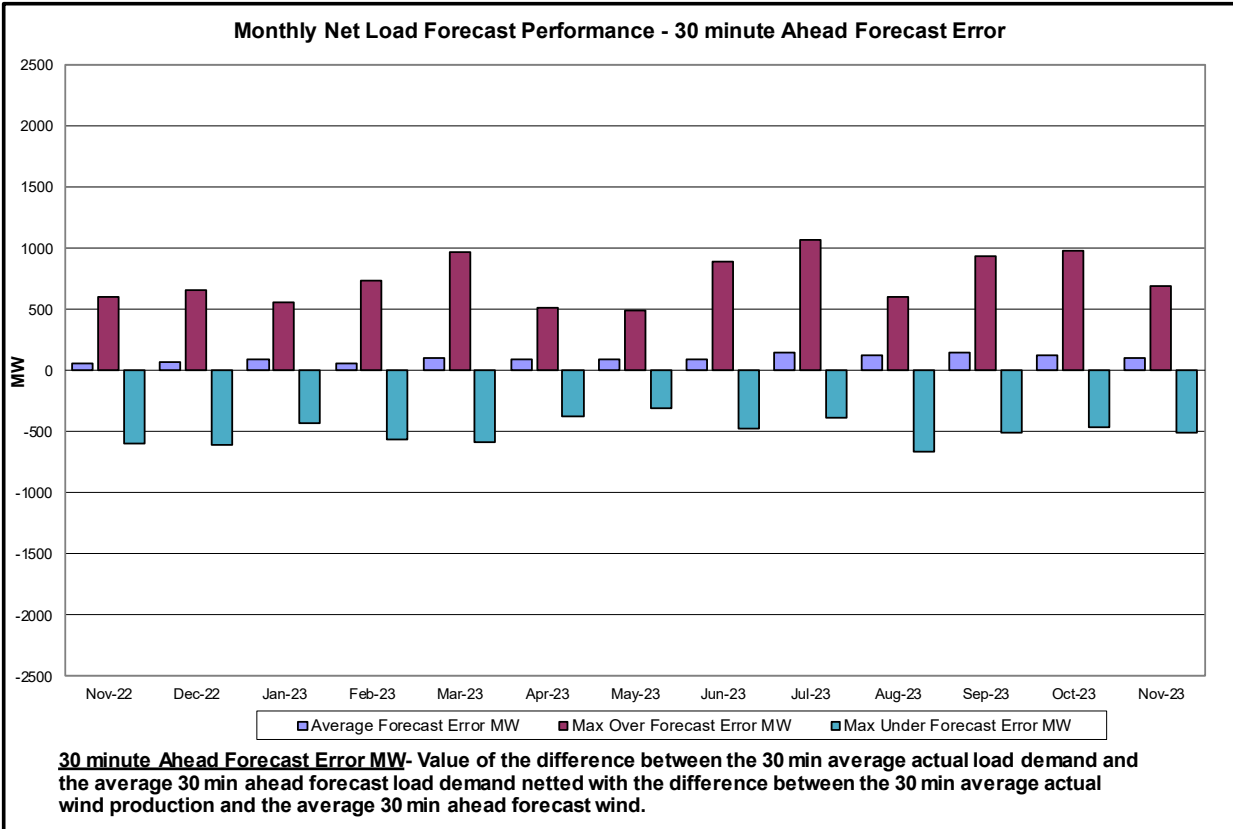


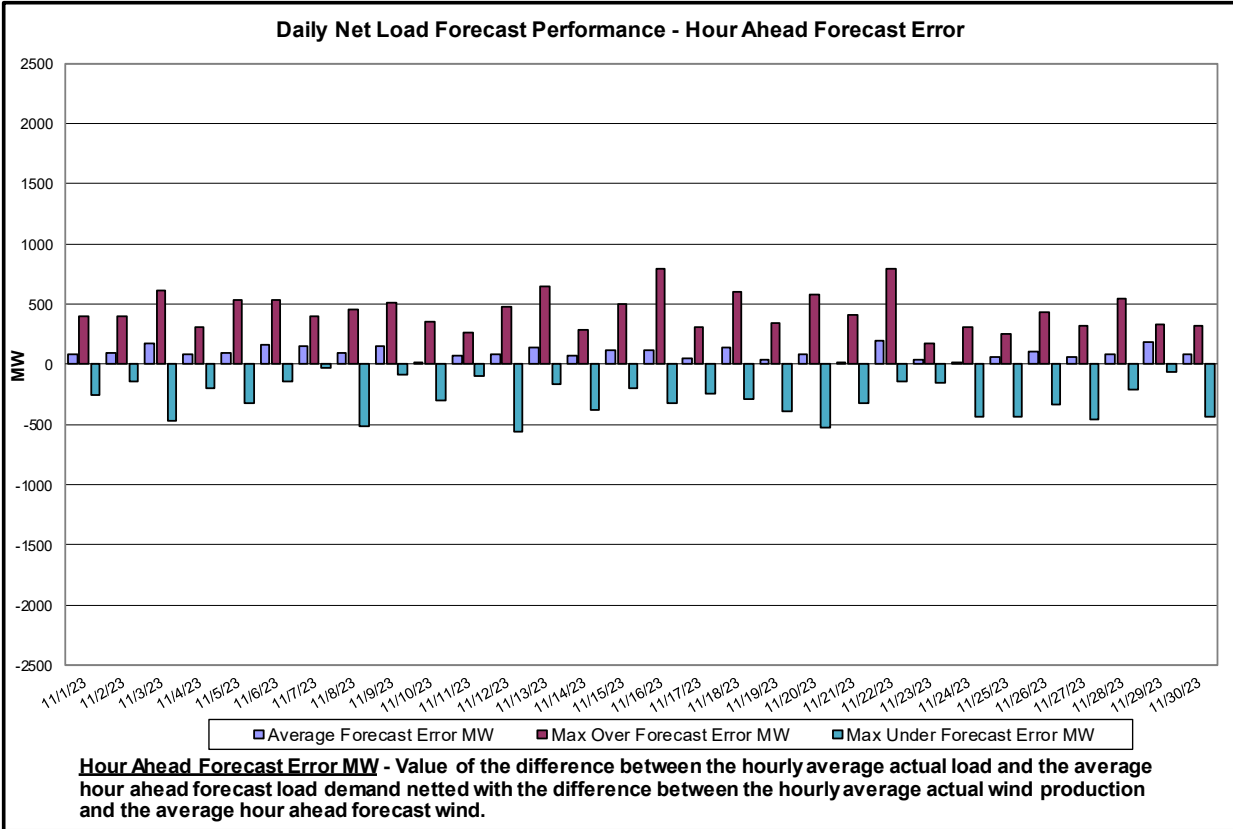
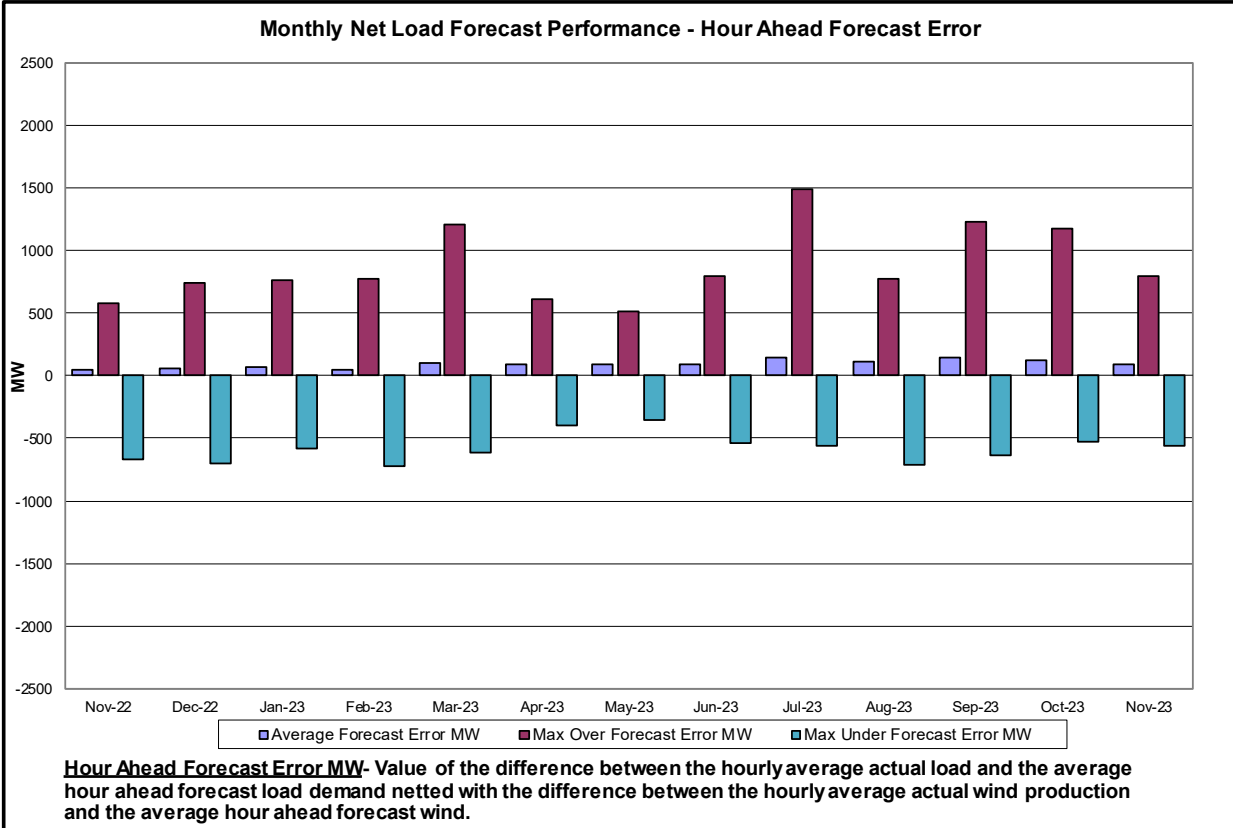


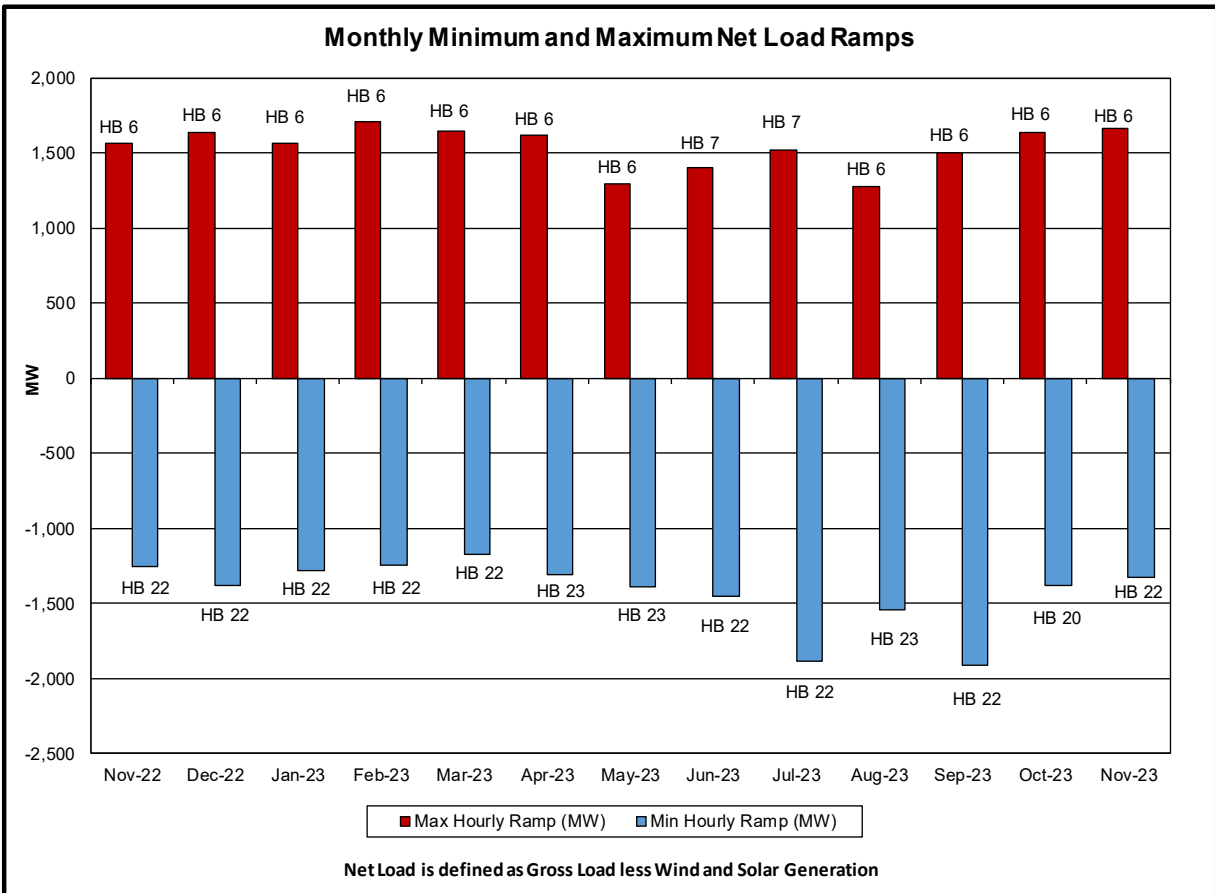
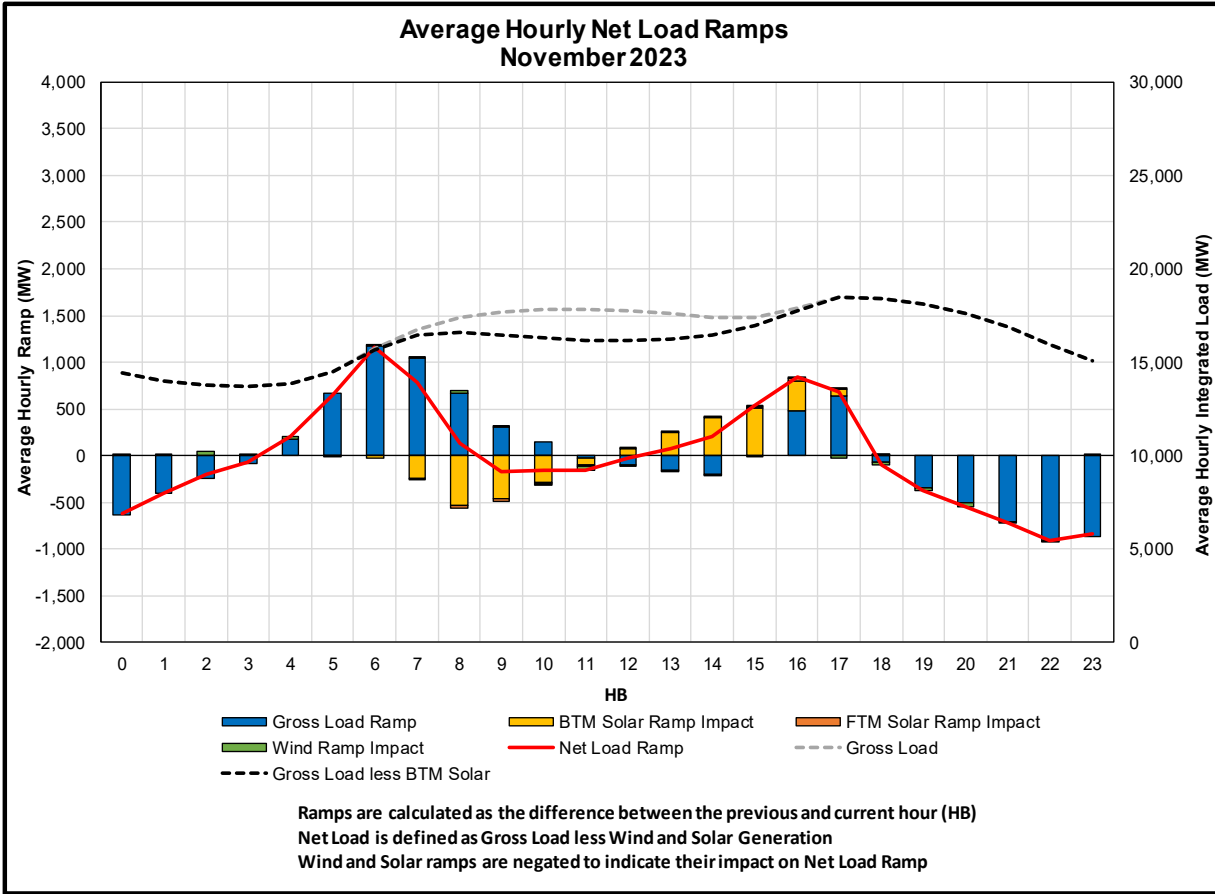


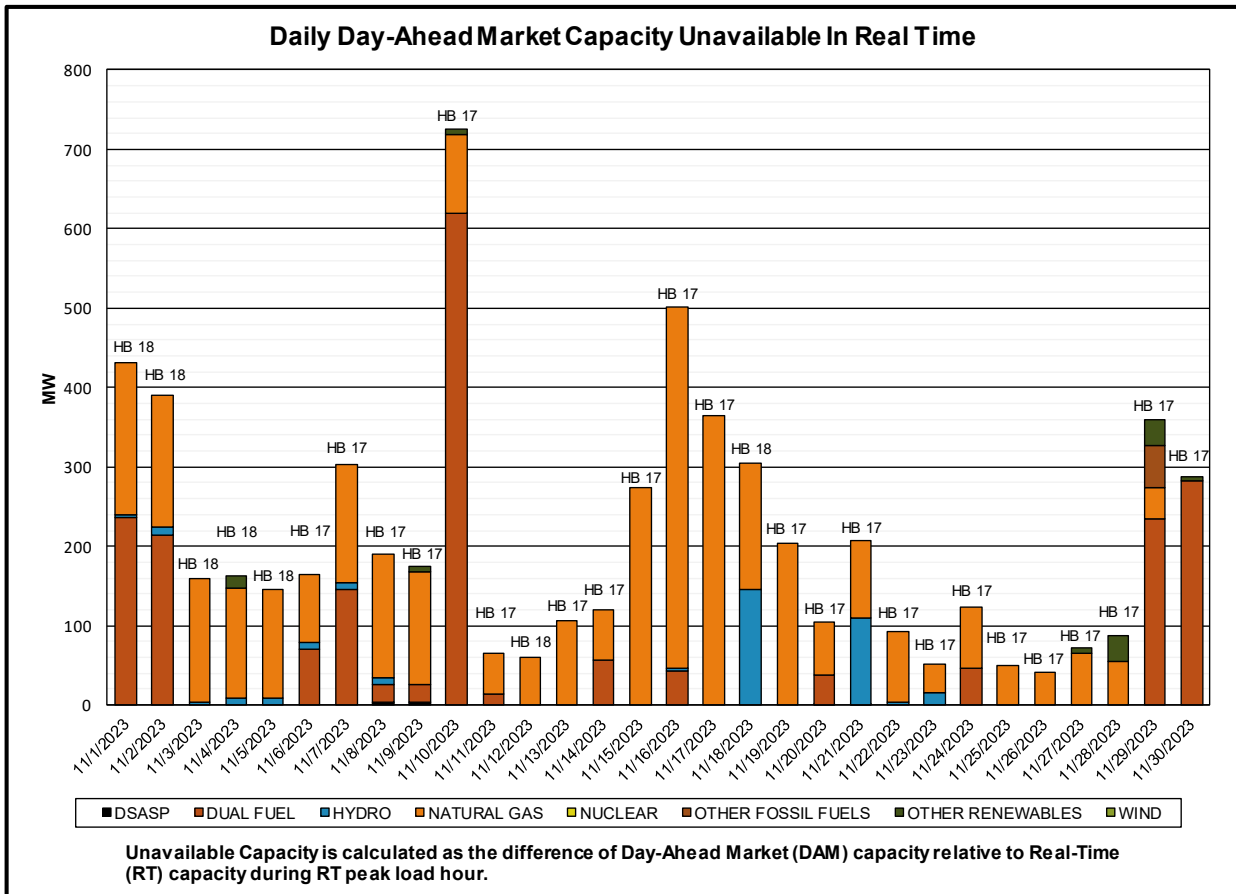
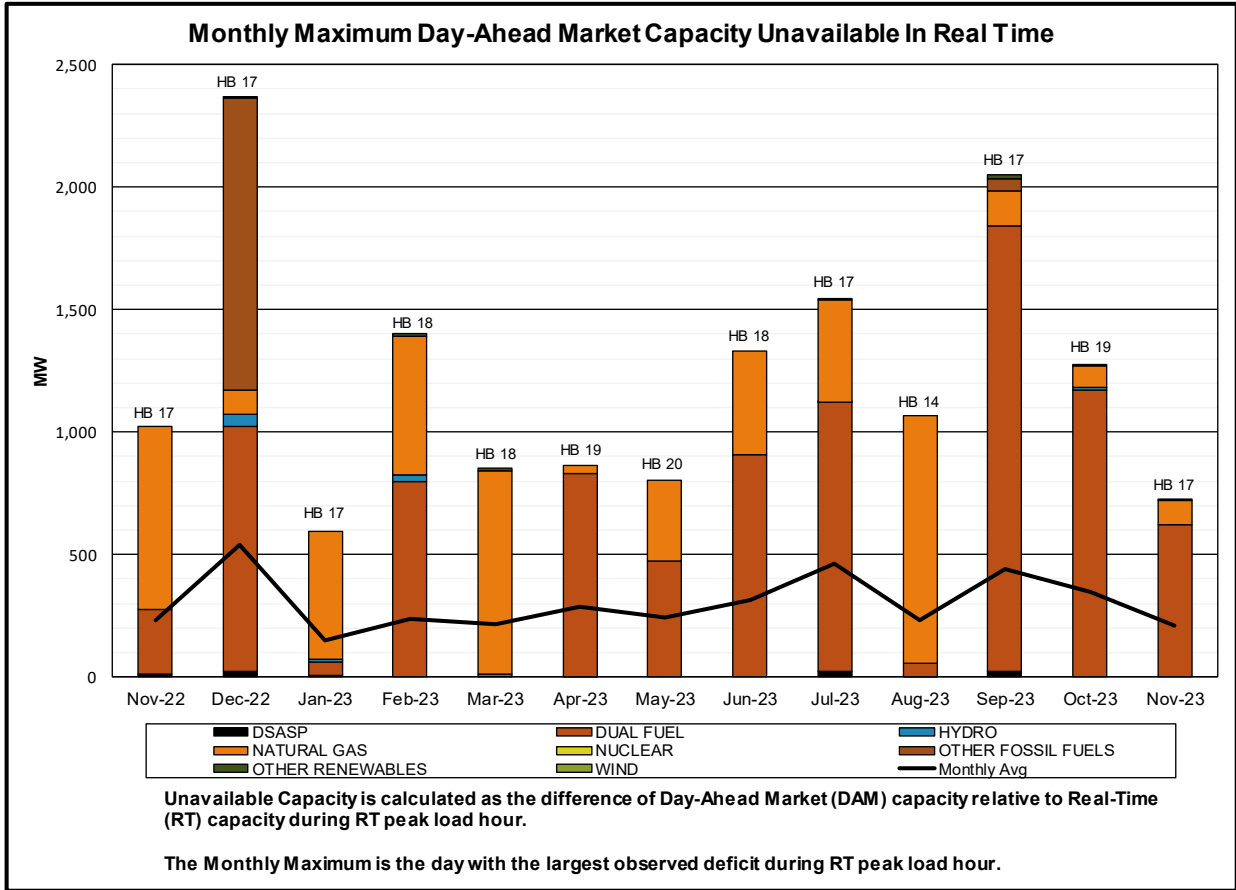


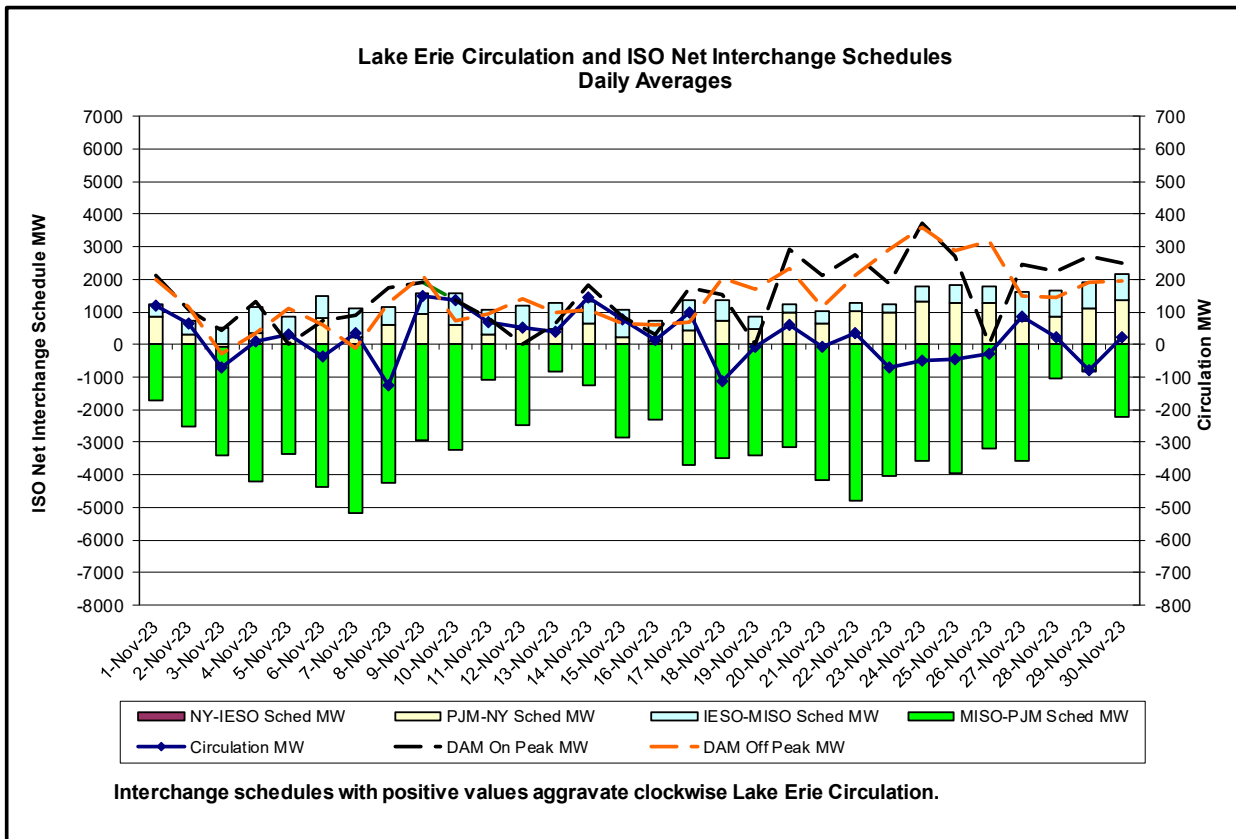
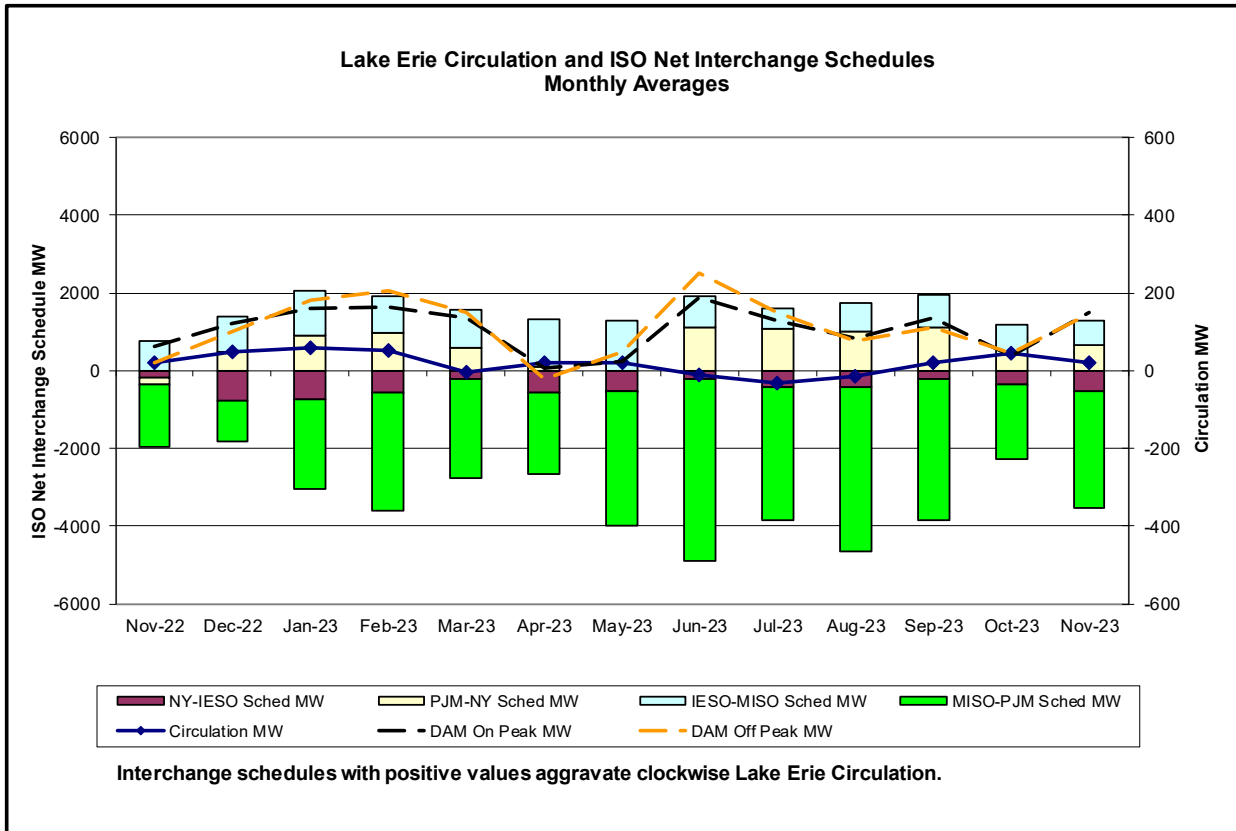




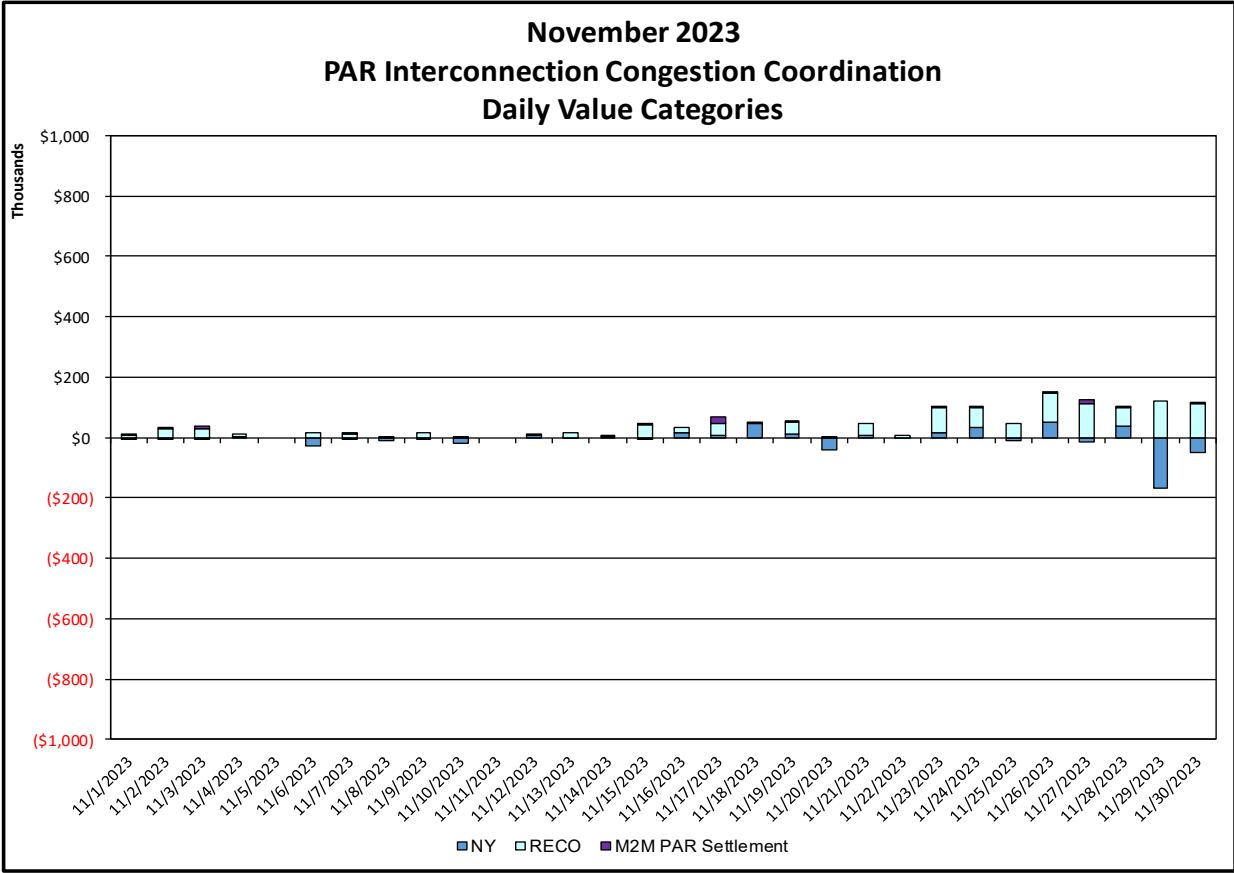
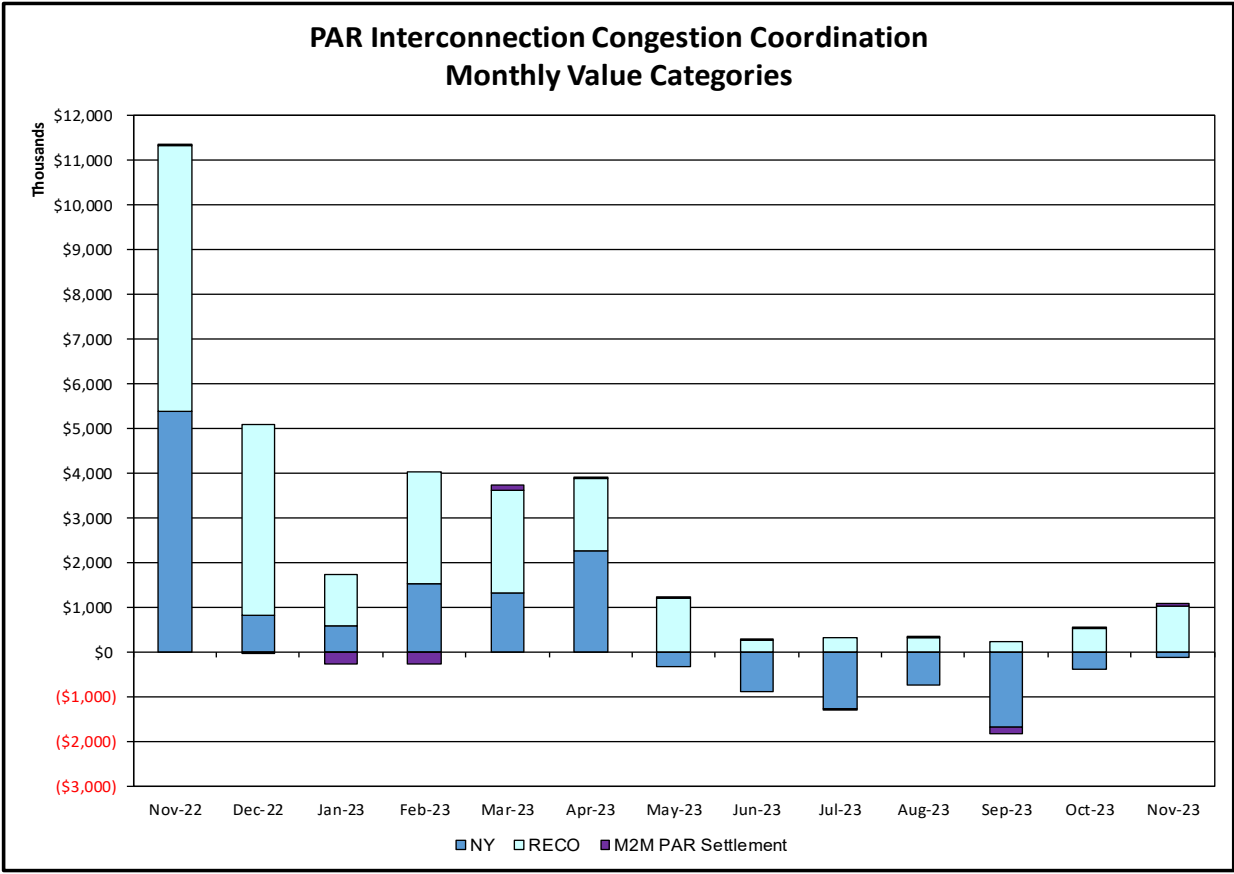






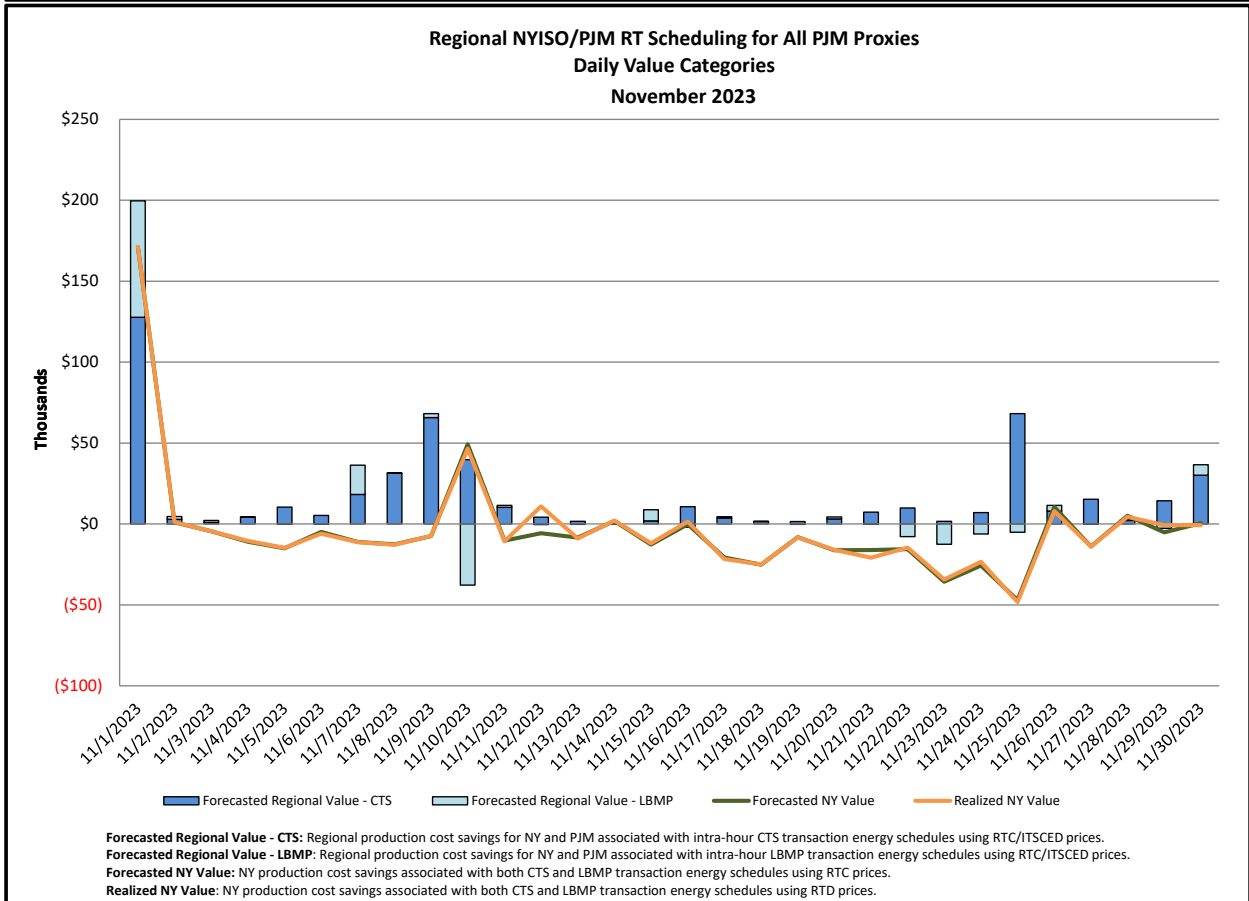
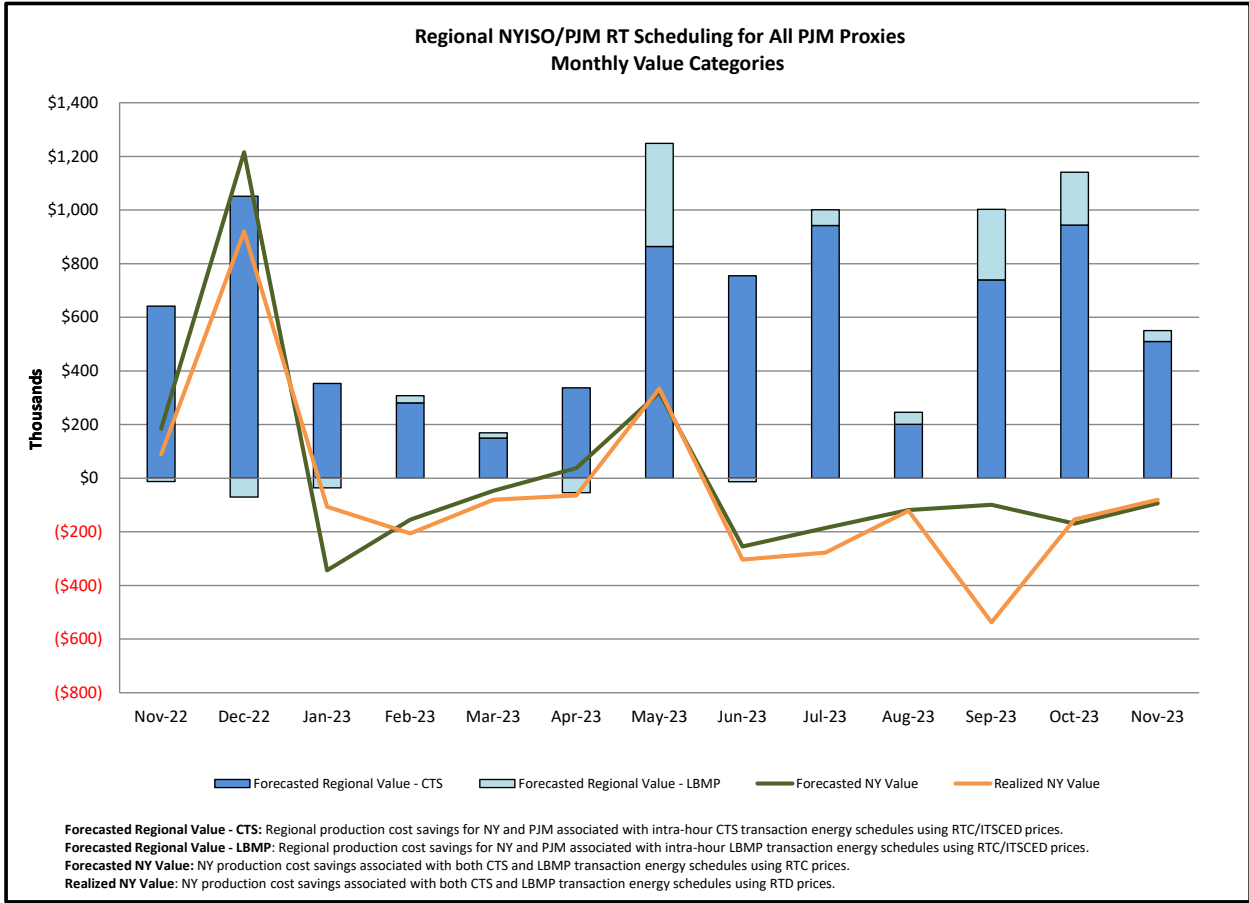


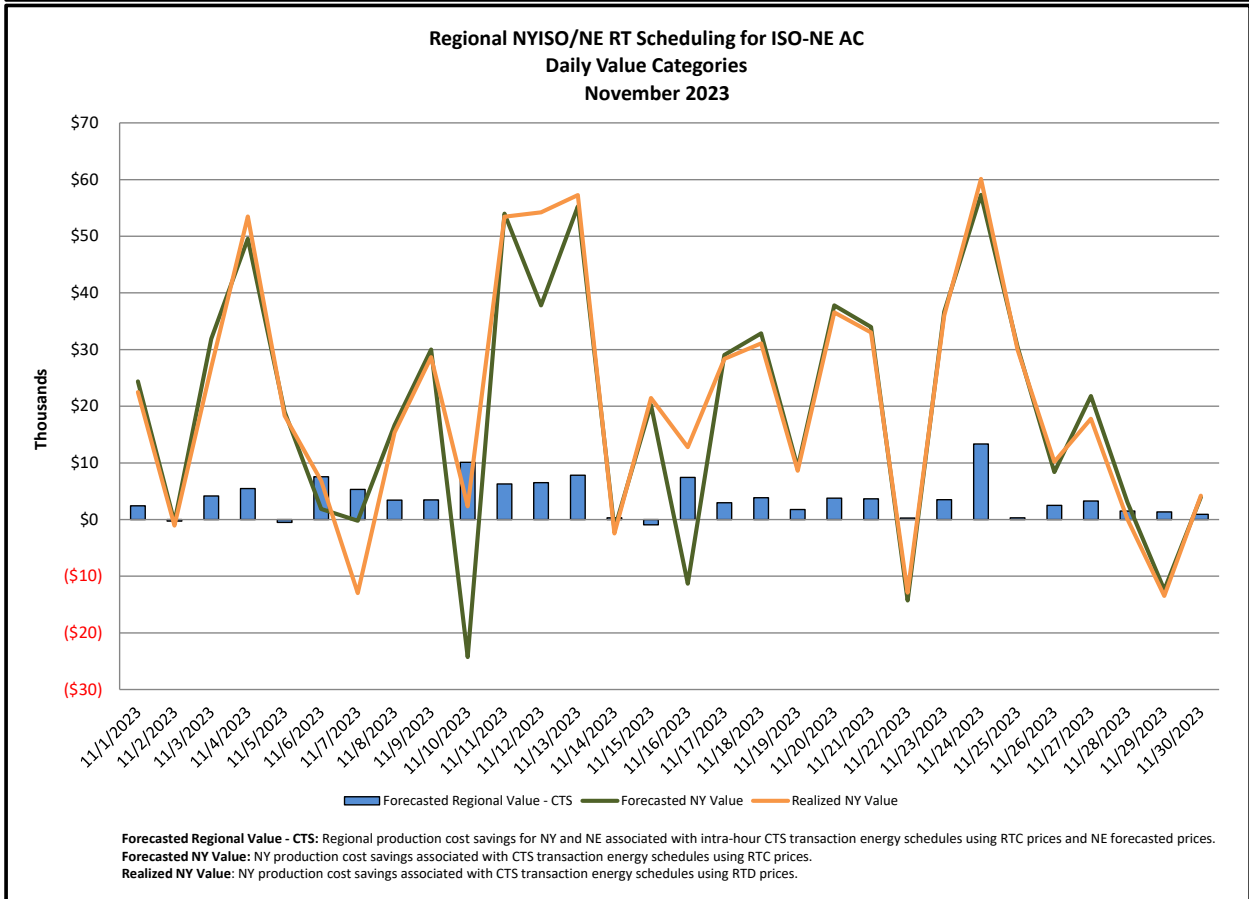
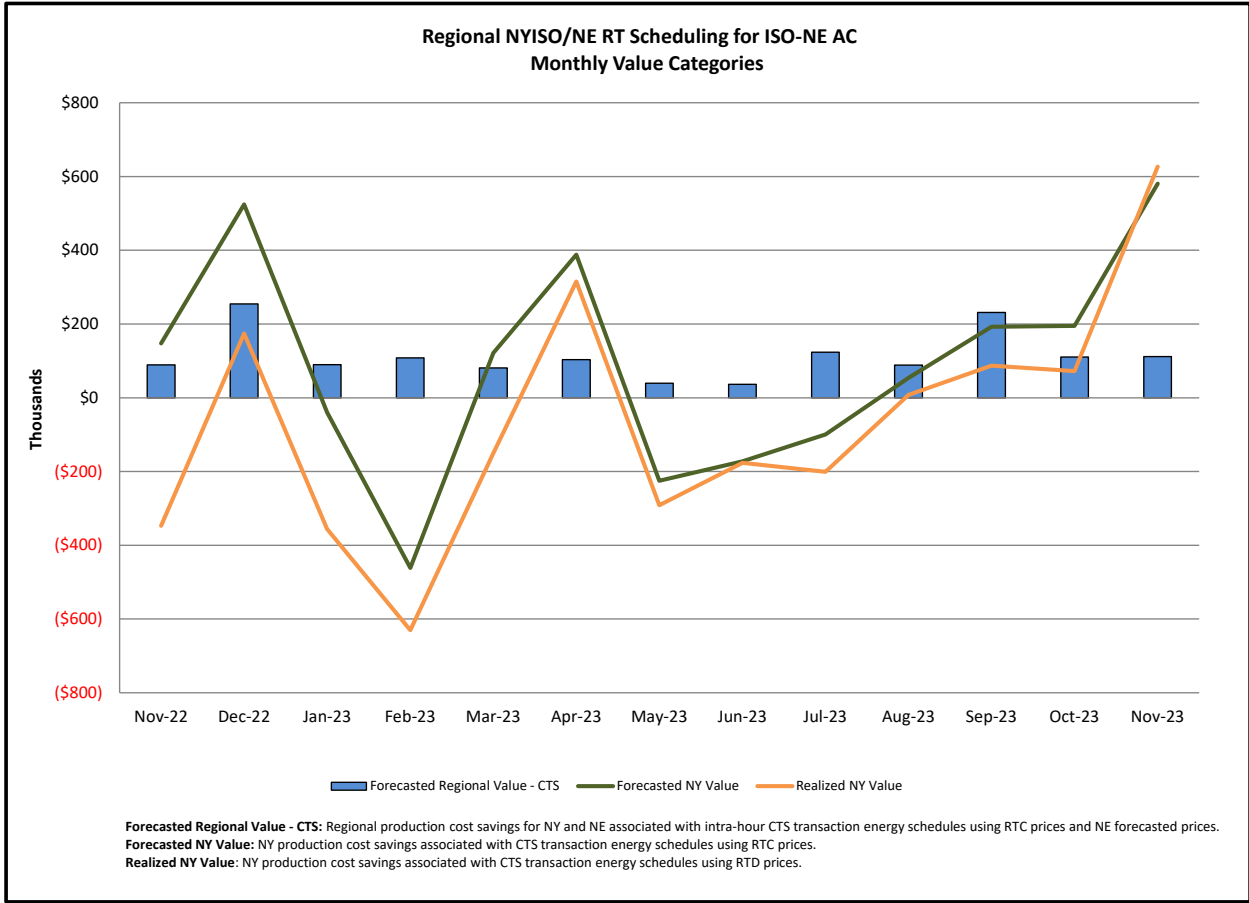
Broader Regional Market Performance Metrics



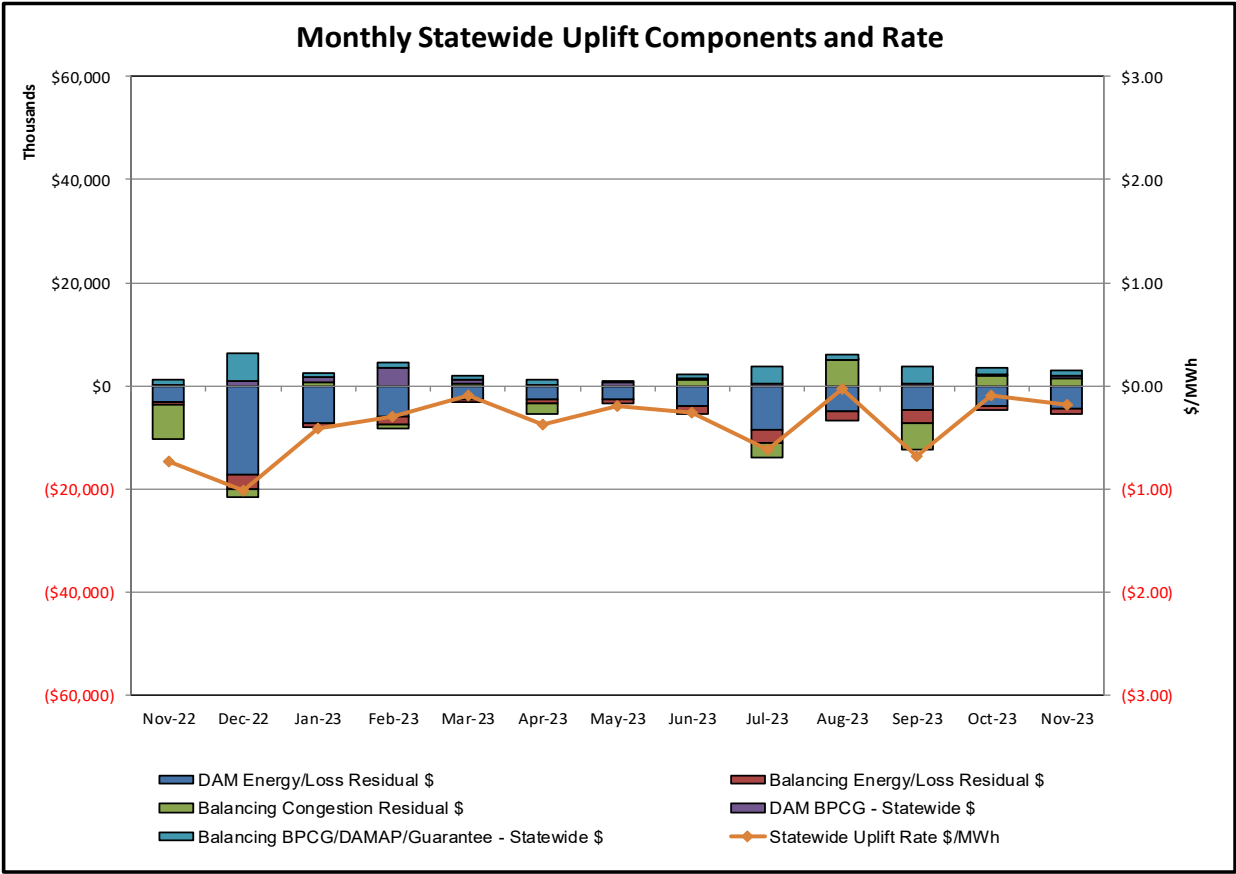
PAR Interconnection Congestion Coordination

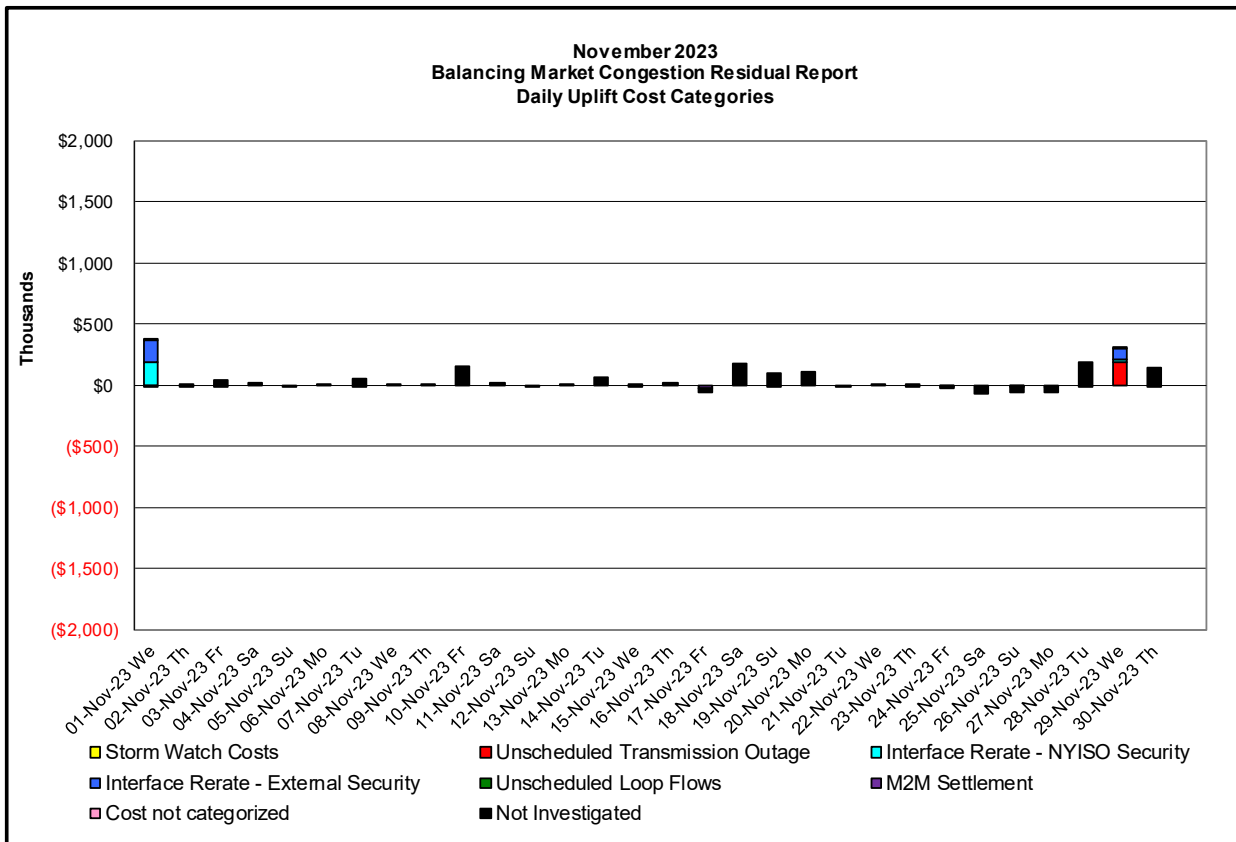
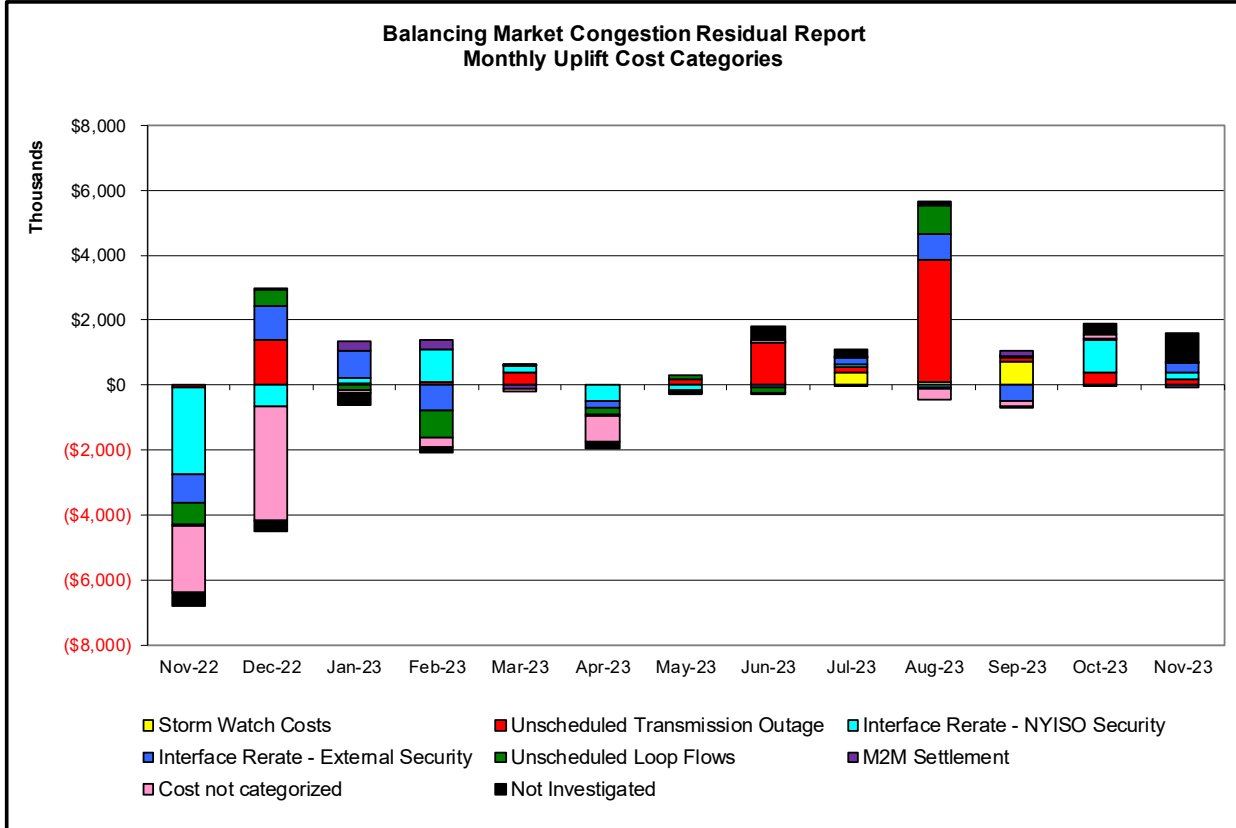
<u>Category</u>	<u>Description</u>
NY	Represents the value NY realizes from Market-to-Market PAR Coordination when experiencing congestion. This is the estimated savings to NY for additional deliveries into NY
RECO	Represents the value of PJM's obligation to deliver 80% of service to RECO load over Ramapo 5018. This is the estimated reduction in NYCA congestion due to the PJM delivery of RECO over Ramapo 5018.
M2M PAR Settlement	Market-to-Market PAR Coordination settlement on coordinated flowgates. Through April 2017 this value was included in the NY and RECO categories. The positive sign convention indicates settlement to NY while the negative indicates settlement to PJM.





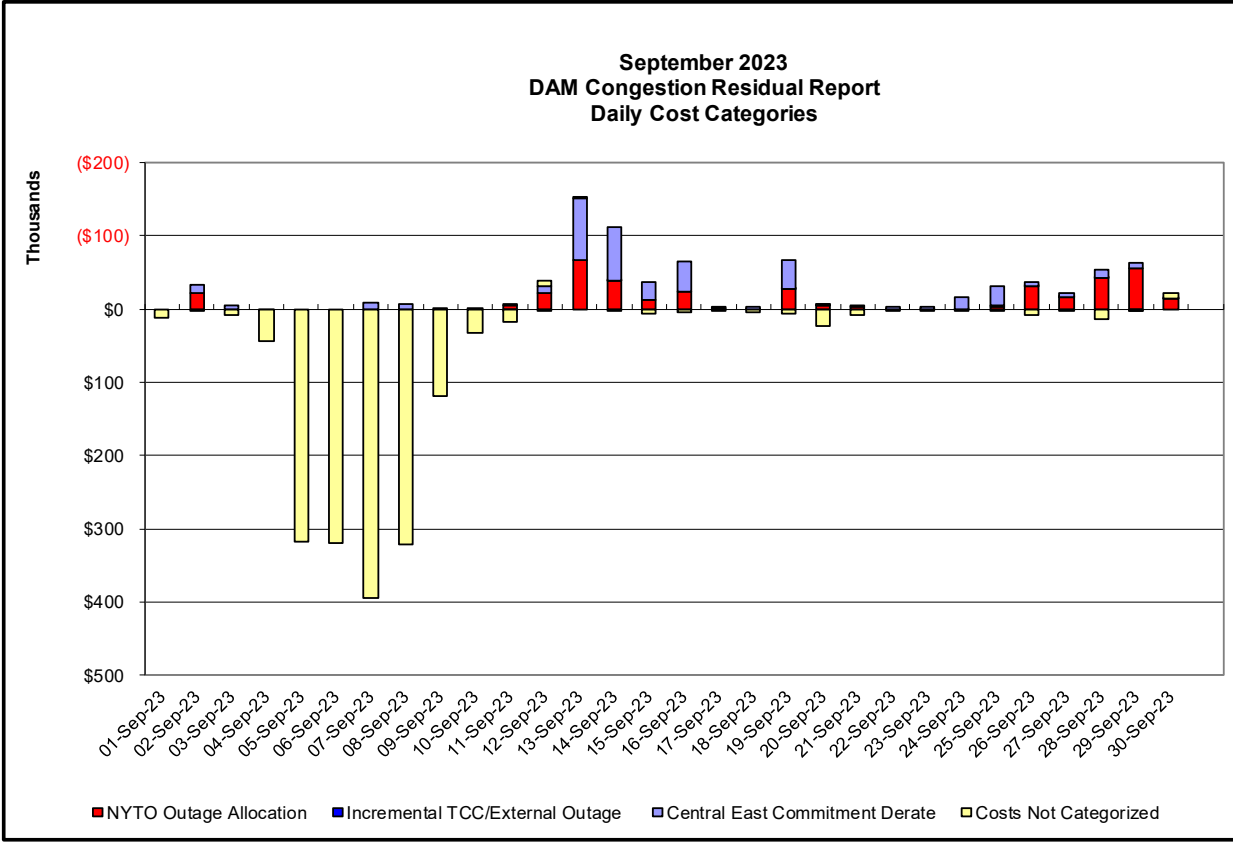
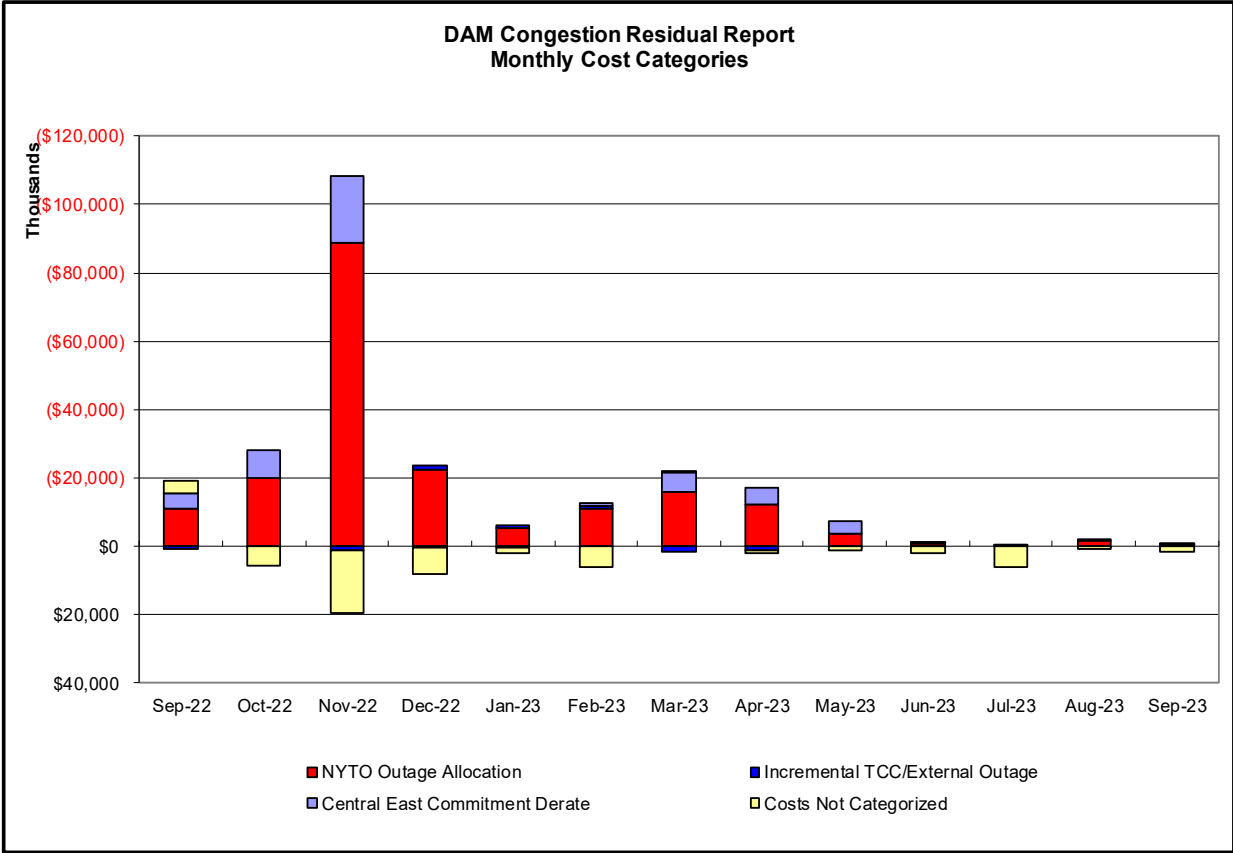
Market Performance Metrics





Day's investigated in November: 1,29			
Event	Date (yyyymmdd)	Hours	Description
	11/1/2023	0	NYCA DNI Ramp Limit
	11/1/2023	0	PJM_AC ACTIVE DNI Ramp Limit
	11/1/2023	18	IESO_AC ACTIVE DNI Ramp Limit
	11/29/2023	0-3,5-7,15-23	Forced Outage East Garden City-New Bridge 138kV (#463)
	11/29/2023	0-3,5-7,15-23	Forced Outage Lake Success-Shore Rd 138kV (#367)
	11/29/2023	2,5,17	NYCA DNI Ramp Limit
	11/29/2023	0-3,10,15,19,21	IESO_AC ACTIVE DNI Ramp Limit

Real-Time Balancing Market Congestion Residual (Uplift Cost) Categories			
<u>Category</u>	<u>Cost Assignment</u>	<u>Events Types</u>	<u>Event Examples</u>
Storm Watch	Zone J	Thunderstorm Alert (TSA)	TSA Activations
Transmission Outage Mismatch	Market-wide	Changes in DAM to RTM transfers related to transmission outage mismatch	Forced Line Outage, Unit AVR Outages Early Line Return from Outage
Interface/Facility Rerate - NYISO Security	Market-wide	Changes in DAM to RTM transfers not related to transmission outage	Interface/Facility Rerates due to RTM voltages
Interface Rerate - External Security	Market-wide	Changes in DAM to RTM transfers related to External Control Area Security Events	TLR Events, External Transaction Curtailments
Unscheduled Loop Flows	Market-wide	Changes in DAM to RTM unscheduled loop flows impacting NYISO Interface transmission constraints	DAM to RTM Lake Erie Loop Flows exceeding +/- 125 MW
M2M Settlement	Market-wide	Settlement result inclusive of coordinated redispatch and Ramapo flowgates	
<u>Monthly Balancing Market Congestion Report Assumptions/Notes</u>			
1) Storm Watch Costs are identified as daily total uplift costs 2) Days with a value of BMCR less M2M Settlement of \$100K/HR, shortfall of \$200K/Day or more, or surplus of \$100K/Day or more are investigated. 3) Uplift costs associated with multiple event types are apportioned equally by hour			



Day-Ahead Market Congestion Residual Categories

<u>Category</u>	<u>Cost Assignment</u>	<u>Events Types</u>	<u>Event Examples</u>
NYTO Outage Allocation	Responsible TO	Direct allocation to NYTO's responsible for transmission equipment status change.	DAM scheduled outage for equipment modeled in-service for the TCC Auction.
Incremental TCC/External Outage Impacts	All TO by Monthly Allocation Factor	Allocation associated with transmission equipment status change caused by change in status of external equipment or change in status of equipment associated with Incremental TCC.	Tie line required out-of-service by TO of neighboring control area.
Central East Commitment Derate	All TO by Monthly Allocation Factor	Reductions in the DAM Central East_VC limit as compared to the TCC Auction limit, which are not associated with transmission line outages.	

