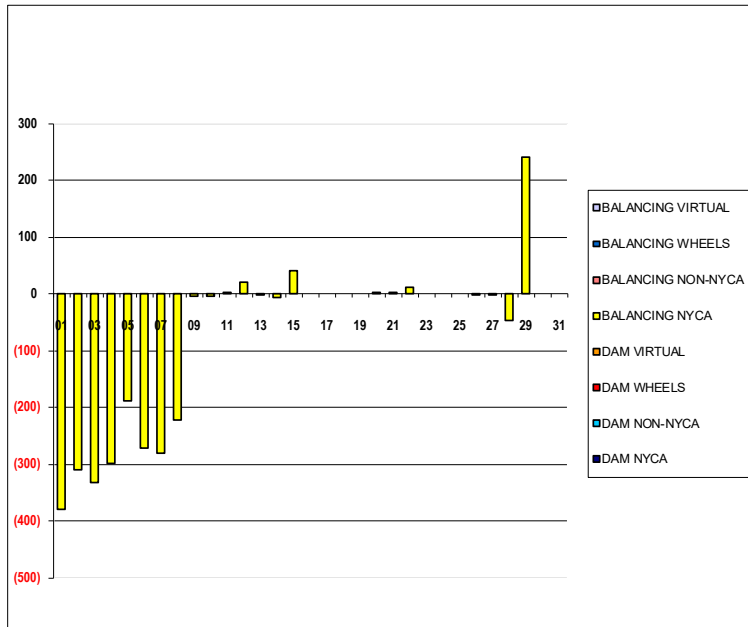


SETTLEMENTS REPORT
 March 2024 Settlement Adjustment
 April 5, 2024

Initial – Market Supply Delta Analysis

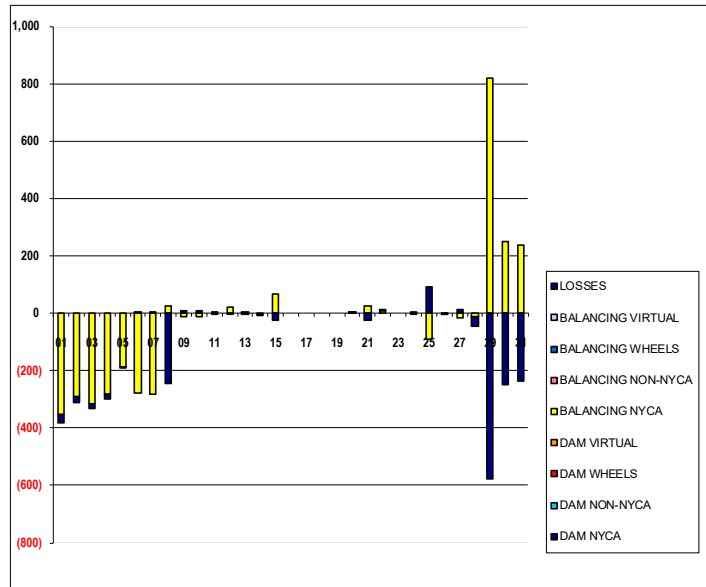
	MONDAY	TUESDAY	WEDNESDAY	THURSDAY	FRIDAY	SATURDAY	SUNDAY
					1	2	3
DAM NYCA					0	0	0
DAM NON-NYCA					0	0	0
DAM WHEELS					0	0	0
DAM VIRTUAL					0	0	0
BALANCING NYCA					(381)	(311)	(333)
BALANCING NON-NYCA					0	0	0
BALANCING WHEELS					0	0	0
BALANCING VIRTUAL					0	0	0
	4	5	6	7	8	9	10
DAM NYCA	0	0	0	0	0	0	0
DAM NON-NYCA	0	0	0	0	0	0	0
DAM WHEELS	0	0	0	0	0	0	0
DAM VIRTUAL	0	0	0	0	0	0	0
BALANCING NYCA	(300)	(188)	(272)	(280)	(222)	(6)	(6)
BALANCING NON-NYCA	0	0	0	0	0	0	0
BALANCING WHEELS	0	0	0	0	0	0	0
BALANCING VIRTUAL	0	0	0	0	0	0	0
	11	12	13	14	15	16	17
DAM NYCA	0	0	0	0	0	0	0
DAM NON-NYCA	0	0	0	0	0	0	0
DAM WHEELS	0	0	0	0	0	0	0
DAM VIRTUAL	0	0	0	0	0	0	0
BALANCING NYCA	3	21	(3)	(7)	41	0	0
BALANCING NON-NYCA	0	0	0	0	0	0	0
BALANCING WHEELS	0	0	0	0	0	0	0
BALANCING VIRTUAL	0	0	0	0	0	0	0
	18	19	20	21	22	23	24
DAM NYCA	0	0	0	0	0	0	0
DAM NON-NYCA	0	0	0	0	0	0	0
DAM WHEELS	0	0	0	0	0	0	0
DAM VIRTUAL	0	0	0	0	0	0	0
BALANCING NYCA	0	0	3	1	11	0	0
BALANCING NON-NYCA	0	0	0	0	0	0	0
BALANCING WHEELS	0	0	0	0	0	0	0
BALANCING VIRTUAL	0	0	0	0	0	0	0
	25	26	27	28	29	30	31
DAM NYCA	0	0	0	0	0	0	0
DAM NON-NYCA	0	0	0	0	0	0	0
DAM WHEELS	0	0	0	0	0	0	0
DAM VIRTUAL	0	0	0	0	0	0	0
BALANCING NYCA	0	(1)	(2)	(46)	241	0	0
BALANCING NON-NYCA	0	0	0	0	0	0	0
BALANCING WHEELS	0	0	0	0	0	0	0
BALANCING VIRTUAL	0	0	0	0	0	0	0



SETTLEMENTS REPORT
 March 2024 Settlement Adjustment
 April 5, 2024

Initial – Market Withdrawals Delta Analysis

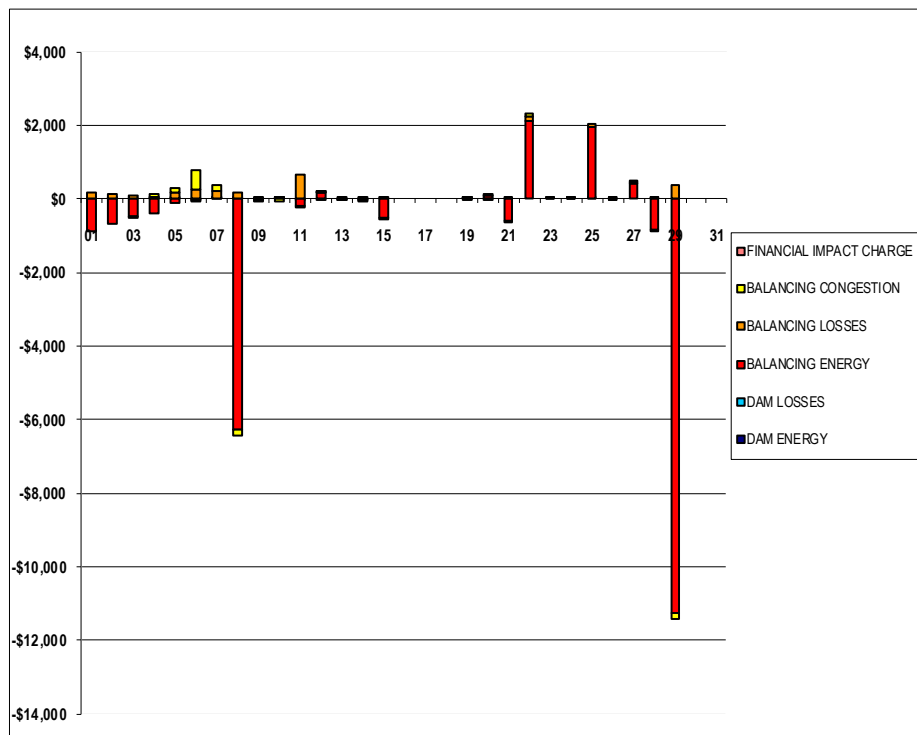
	MONDAY	TUESDAY	WEDNESDAY	THURSDAY	FRIDAY	SATURDAY	SUNDAY
					1	2	3
DAM NYCA					0	0	0
DAM NON-NYCA					0	0	0
DAM WHEELS					0	0	0
DAM VIRTUAL					0	0	0
BALANCING NYCA					(353)	(291)	(317)
BALANCING NON-NYCA					0	0	0
BALANCING WHEELS					0	0	0
BALANCING VIRTUAL					0	0	0
UFE/LOSSES					(27)	(20)	(16)
	4	5	6	7	8	9	10
DAM NYCA	0	0	0	0	0	0	0
DAM NON-NYCA	0	0	0	0	0	0	0
DAM WHEELS	0	0	0	0	0	0	0
DAM VIRTUAL	0	0	0	0	0	0	0
BALANCING NYCA	(284)	(187)	(278)	(284)	24	(13)	(14)
BALANCING NON-NYCA	0	0	0	0	0	0	0
BALANCING WHEELS	0	0	0	0	0	0	0
BALANCING VIRTUAL	0	0	0	0	0	0	0
UFE/LOSSES	(16)	(1)	6	4	(246)	7	9
	11	12	13	14	15	16	17
DAM NYCA	0	0	0	0	0	0	0
DAM NON-NYCA	0	0	0	0	0	0	0
DAM WHEELS	0	0	0	0	0	0	0
DAM VIRTUAL	0	0	0	0	0	0	0
BALANCING NYCA	5	21	(3)	(3)	66	0	0
BALANCING NON-NYCA	0	0	0	0	0	0	0
BALANCING WHEELS	0	0	0	0	0	0	0
BALANCING VIRTUAL	0	0	0	0	0	0	0
UFE/LOSSES	(1)	(1)	0	(4)	(25)	0	0
	18	19	20	21	22	23	24
DAM NYCA	0	0	0	0	0	0	0
DAM NON-NYCA	0	0	0	0	0	0	0
DAM WHEELS	0	0	0	0	0	0	0
DAM VIRTUAL	0	0	0	0	0	0	0
BALANCING NYCA	0	0	1	27	8	0	0
BALANCING NON-NYCA	0	0	0	0	0	0	0
BALANCING WHEELS	0	0	0	0	0	0	0
BALANCING VIRTUAL	0	0	0	0	0	0	0
UFE/LOSSES	0	0	2	(26)	2	0	(0)
	25	26	27	28	29	30	31
DAM NYCA	0	0	0	0	0	0	0
DAM NON-NYCA	0	0	0	0	0	0	0
DAM WHEELS	0	0	0	0	0	0	0
DAM VIRTUAL	0	0	0	0	0	0	0
BALANCING NYCA	(91)	(1)	(15)	(11)	820	251	239
BALANCING NON-NYCA	0	0	0	0	0	0	0
BALANCING WHEELS	0	0	0	0	0	0	0
BALANCING VIRTUAL	0	0	0	0	0	0	0
UFE/LOSSES	91	(0)	13	(35)	(579)	(251)	(239)



SETTLEMENTS REPORT
 March 2024 Settlement Adjustment
 April 5, 2024

Initial – Market Residuals Delta Analysis

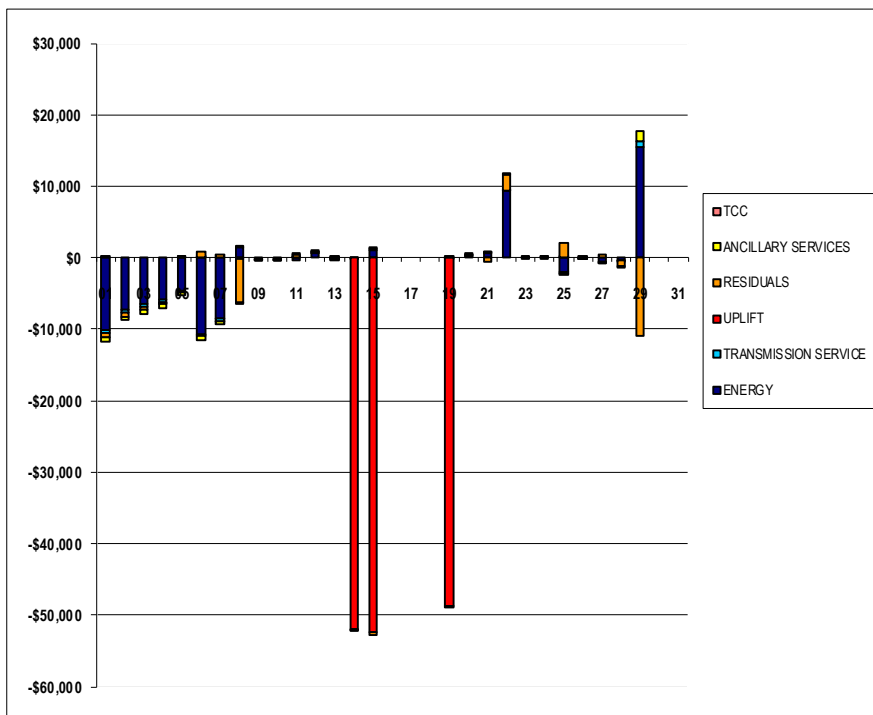
	MONDAY	TUESDAY	WEDNESDAY	THURSDAY	FRIDAY	SATURDAY	SUNDAY
					1	2	3
DAM ENERGY					\$0.01	\$0.00	\$0.00
DAM LOSSES					\$0.01	\$0.01	\$0.00
BALANCING ENERGY					(\$904.47)	(\$667.93)	(\$474.83)
BALANCING LOSSES					\$182.07	\$125.09	\$93.33
BALANCING CONGESTION					\$0.00	\$0.00	(\$0.01)
FINANCIAL IMPACT CHARGE					\$0.00	\$0.00	\$0.00
	4	5	6	7	8	9	10
DAM ENERGY	\$0.01	\$0.01	\$0.00	\$0.01	\$0.01	\$0.00	\$0.00
DAM LOSSES	\$0.00	\$0.00	(\$0.01)	\$0.00	\$0.00	\$0.00	\$0.00
BALANCING ENERGY	(\$385.78)	(\$128.93)	(\$21.79)	\$0.28	(\$6,289.23)	(\$14.74)	\$22.08
BALANCING LOSSES	\$54.55	\$160.37	\$235.38	\$212.22	\$182.87	\$6.76	\$1.61
BALANCING CONGESTION	\$62.98	\$112.24	\$526.25	\$155.71	(\$153.78)	(\$39.81)	(\$54.09)
FINANCIAL IMPACT CHARGE	\$0.00	\$0.00	(\$0.02)	\$0.00	\$0.00	\$0.00	\$0.02
	11	12	13	14	15	16	17
DAM ENERGY	\$0.00	\$0.00	(\$0.01)	\$0.00	\$0.00	\$0.00	\$0.00
DAM LOSSES	(\$0.01)	(\$0.01)	(\$0.01)	(\$0.01)	\$0.00	\$0.00	\$0.00
BALANCING ENERGY	(\$192.58)	\$151.63	\$0.41	(\$44.65)	(\$535.32)	\$0.00	\$0.00
BALANCING LOSSES	\$646.64	\$13.42	(\$1.82)	(\$3.28)	(\$1.00)	\$0.00	\$0.00
BALANCING CONGESTION	(\$0.80)	\$0.62	\$0.00	\$2.07	\$1.24	\$0.00	\$0.00
FINANCIAL IMPACT CHARGE	\$0.00	\$0.00	\$0.00	\$0.00	\$0.00	\$0.00	\$0.00
	18	19	20	21	22	23	24
DAM ENERGY	\$0.00	(\$0.01)	\$0.00	\$0.00	\$0.00	\$0.00	\$0.00
DAM LOSSES	\$0.00	\$0.01	\$0.00	\$0.00	\$0.00	\$0.00	\$0.01
BALANCING ENERGY	\$0.00	\$2.61	\$68.15	(\$602.24)	\$2,096.03	\$0.47	\$1.08
BALANCING LOSSES	\$0.00	\$0.18	(\$4.79)	(\$21.72)	\$120.31	\$0.19	\$0.17
BALANCING CONGESTION	\$0.00	\$0.00	\$11.45	\$0.45	\$113.04	\$0.41	\$0.62
FINANCIAL IMPACT CHARGE	\$0.00	\$0.00	\$0.00	\$0.00	\$0.00	\$0.00	\$0.00
	25	26	27	28	29	30	31
DAM ENERGY	\$0.00	\$0.00	\$0.00	\$0.00	\$0.00	\$0.00	\$0.00
DAM LOSSES	\$0.01	\$0.01	\$0.00	\$0.01	\$0.00	\$0.00	\$0.00
BALANCING ENERGY	\$1,963.40	(\$0.02)	\$429.96	(\$861.03)	(\$11,269.11)	\$0.00	\$0.00
BALANCING LOSSES	\$89.23	\$0.93	\$25.35	(\$31.86)	\$375.34	\$0.00	\$0.00
BALANCING CONGESTION	\$0.00	(\$0.71)	\$10.58	\$6.33	(\$142.45)	\$0.00	\$0.00
FINANCIAL IMPACT CHARGE	\$0.00	\$0.00	\$0.00	\$0.00	\$0.00	\$0.00	\$0.00



SETTLEMENTS REPORT
 March 2024 Settlement Adjustment
 April 5, 2024

Initial – Market Costs Delta Analysis

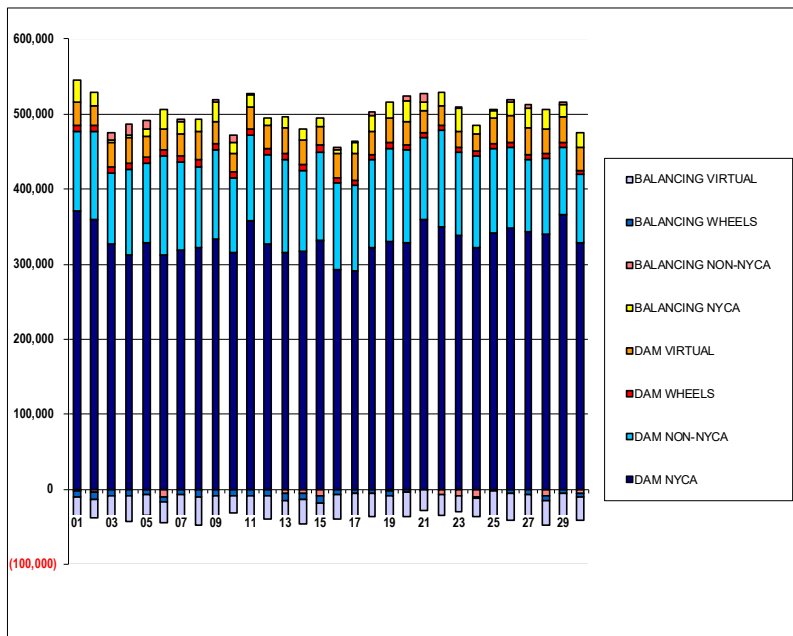
	MONDAY	TUESDAY	WEDNESDAY	THURSDAY	FRIDAY	SATURDAY	SUNDAY
ENERGY					1	2	3
TRANSMISSION SERVICE					(\$10,061.31)	(\$7,348.24)	(\$6,470.68)
UPLIFT					(\$428.03)	(\$352.24)	(\$383.28)
RESIDUALS					\$0.01	\$0.00	\$0.00
ANCILLARY SERVICES					(\$722.38)	(\$542.83)	(\$381.51)
TCC					(\$627.57)	(\$521.52)	(\$568.46)
	4	5	6	7	8	9	10
ENERGY	(\$5,857.81)	(\$4,684.55)	(\$10,650.01)	(\$8,478.60)	\$1,377.64	(\$132.08)	(\$131.72)
TRANSMISSION SERVICE	(\$343.43)	(\$225.98)	(\$336.63)	(\$344.22)	\$29.56	(\$15.60)	(\$17.11)
UPLIFT	(\$0.20)	\$0.13	\$9.80	(\$0.01)	(\$71.88)	(\$28.53)	(\$1.75)
RESIDUALS	(\$268.24)	\$143.69	\$739.81	\$368.22	(\$6,260.13)	(\$47.79)	(\$30.38)
ANCILLARY SERVICES	(\$511.95)	(\$334.55)	(\$498.77)	(\$510.88)	(\$30.64)	(\$20.58)	(\$22.66)
TCC	\$0.00	\$0.00	\$0.00	\$0.00	\$0.00	\$0.00	\$0.00
	11	12	13	14	15	16	17
ENERGY	(\$381.90)	\$592.51	(\$63.21)	(\$60.18)	\$1,079.76	\$0.00	\$0.00
TRANSMISSION SERVICE	\$5.50	\$25.73	(\$3.84)	(\$3.72)	\$79.91	\$0.00	\$0.00
UPLIFT	\$0.01	(\$0.01)	\$0.01	(\$51,948.20)	(\$52,308.14)	\$0.00	\$0.00
RESIDUALS	\$453.25	\$165.66	(\$1.43)	(\$45.87)	(\$535.08)	\$0.00	\$0.00
ANCILLARY SERVICES	\$7.70	\$38.35	(\$5.72)	(\$13.33)	\$109.01	\$0.00	\$0.00
TCC	\$0.00	\$0.00	\$0.00	\$0.00	\$0.00	\$0.00	\$0.00
	18	19	20	21	22	23	24
ENERGY	\$0.00	(\$1.80)	\$283.26	\$655.15	\$9,300.88	(\$1.05)	(\$2.60)
TRANSMISSION SERVICE	\$0.00	\$0.00	\$1.21	\$32.34	\$10.27	\$0.00	\$0.00
UPLIFT	\$0.00	(\$48,652.39)	\$0.00	\$0.00	(\$0.01)	\$0.00	\$0.00
RESIDUALS	\$0.00	\$2.79	\$74.81	(\$623.51)	\$2,329.38	\$1.07	\$1.88
ANCILLARY SERVICES	\$0.00	(\$3.91)	\$19.53	\$38.89	\$15.15	\$0.00	\$0.01
TCC	\$0.00	\$0.00	\$0.00	\$0.00	\$0.00	\$0.00	\$0.00
	25	26	27	28	29	30	31
ENERGY	(\$2,056.13)	(\$18.08)	(\$518.03)	(\$348.04)	\$15,385.32	\$0.00	\$0.00
TRANSMISSION SERVICE	(\$110.11)	(\$1.01)	(\$17.83)	(\$13.90)	\$992.15	\$0.00	\$0.00
UPLIFT	\$0.01	(\$0.01)	\$0.00	\$0.00	\$0.00	\$0.00	\$0.00
RESIDUALS	\$2,052.64	\$0.21	\$465.89	(\$886.55)	(\$11,036.22)	\$0.00	\$0.00
ANCILLARY SERVICES	(\$131.24)	(\$1.51)	(\$21.87)	(\$33.13)	\$1,269.07	\$0.00	\$0.00
TCC	\$0.00	\$0.00	\$0.00	\$0.00	\$0.00	\$0.00	\$0.00



SETTLEMENTS REPORT
 March 2024 Settlement Adjustment
 April 5, 2024

Weekly Settlement – Market Supply Analysis

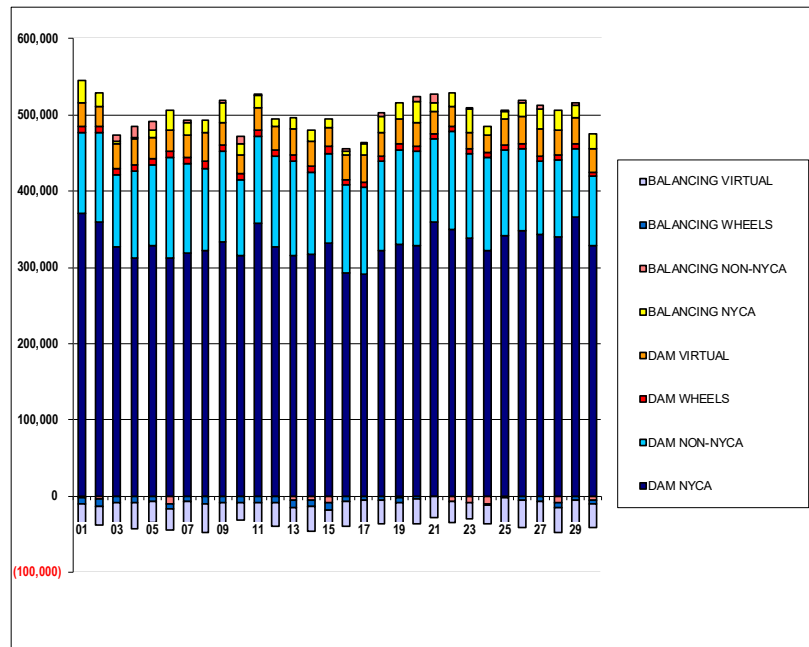
	MONDAY	TUESDAY	WEDNESDAY	THURSDAY	FRIDAY	SATURDAY	SUNDAY
					1	2	3
DAM NYCA					370,627	359,216	326,282
DAM NON-NYCA					106,511	117,351	95,434
DAM WHEELS					7,682	9,081	8,132
DAM VIRTUAL					31,834	24,797	32,233
BALANCING NYCA					28,804	18,150	3,831
BALANCING NON-NYCA					(3,004)	(4,607)	8,827
BALANCING WHEELS					(7,492)	(9,081)	(8,132)
BALANCING VIRTUAL					(31,834)	(24,797)	(32,233)
	4	5	6	7	8	9	10
DAM NYCA	311,631	328,753	313,033	319,274	321,496	333,275	315,470
DAM NON-NYCA	113,986	106,510	131,748	116,985	108,653	118,839	99,808
DAM WHEELS	8,207	7,584	7,584	7,976	8,760	8,760	8,395
DAM VIRTUAL	34,298	27,281	27,169	29,455	37,783	29,220	23,698
BALANCING NYCA	3,052	10,568	26,871	16,531	17,145	25,661	14,102
BALANCING NON-NYCA	14,733	11,466	(10,104)	3,245	(1,031)	2,854	10,443
BALANCING WHEELS	(8,207)	(7,584)	(7,584)	(7,976)	(8,760)	(8,760)	(8,195)
BALANCING VIRTUAL	(34,298)	(27,281)	(27,169)	(29,455)	(37,783)	(29,220)	(23,698)
	11	12	13	14	15	16	17
DAM NYCA	357,747	327,205	314,954	316,658	332,141	292,930	290,593
DAM NON-NYCA	114,050	118,224	123,856	108,483	117,382	114,734	114,003
DAM WHEELS	8,662	8,760	9,360	7,008	9,360	7,008	6,408
DAM VIRTUAL	29,254	30,023	34,206	33,119	24,498	32,818	35,770
BALANCING NYCA	15,785	9,996	14,003	15,459	10,913	5,211	16,164
BALANCING NON-NYCA	1,324	(949)	(6,187)	(6,263)	(9,134)	2,211	1,114
BALANCING WHEELS	(8,662)	(8,660)	(9,360)	(6,939)	(9,360)	(7,008)	(5,769)
BALANCING VIRTUAL	(29,254)	(30,023)	(34,206)	(33,119)	(24,498)	(32,818)	(35,770)
	18	19	20	21	22	23	24
DAM NYCA	322,624	330,064	328,015	359,838	349,221	338,957	322,687
DAM NON-NYCA	116,924	124,077	124,089	108,895	128,659	110,165	121,627
DAM WHEELS	6,408	8,760	6,408	6,408	6,408	6,408	6,408
DAM VIRTUAL	31,069	32,465	31,676	28,695	27,462	20,726	23,597
BALANCING NYCA	20,714	20,120	26,657	12,821	18,057	32,183	10,243
BALANCING NON-NYCA	5,656	(2,472)	8,039	11,450	(6,785)	(9,700)	(10,700)
BALANCING WHEELS	(5,020)	(6,843)	(4,704)	(378)	0	100	(1,893)
BALANCING VIRTUAL	(31,069)	(32,465)	(31,676)	(28,695)	(27,462)	(20,726)	(23,597)
	25	26	27	28	29	30	31
DAM NYCA	341,640	348,618	343,465	340,211	366,804	329,225	319,266
DAM NON-NYCA	111,737	107,818	95,214	100,574	88,259	89,846	82,175
DAM WHEELS	6,408	6,408	6,708	7,158	6,408	5,607	6,408
DAM VIRTUAL	34,877	34,612	36,662	32,776	34,691	30,327	35,409
BALANCING NYCA	9,969	18,192	26,596	25,187	16,428	20,420	15,892
BALANCING NON-NYCA	2,294	3,774	3,326	(8,598)	2,972	(5,481)	(6,553)
BALANCING WHEELS	(1,560)	(6,408)	(6,608)	(7,108)	(6,408)	(5,507)	(6,184)
BALANCING VIRTUAL	(34,877)	(34,612)	(36,662)	(32,776)	(34,691)	(30,327)	(35,409)



SETTLEMENTS REPORT
 March 2024 Settlement Adjustment
 April 5, 2024

Initial Settlement Adjustment – Market Supply Analysis

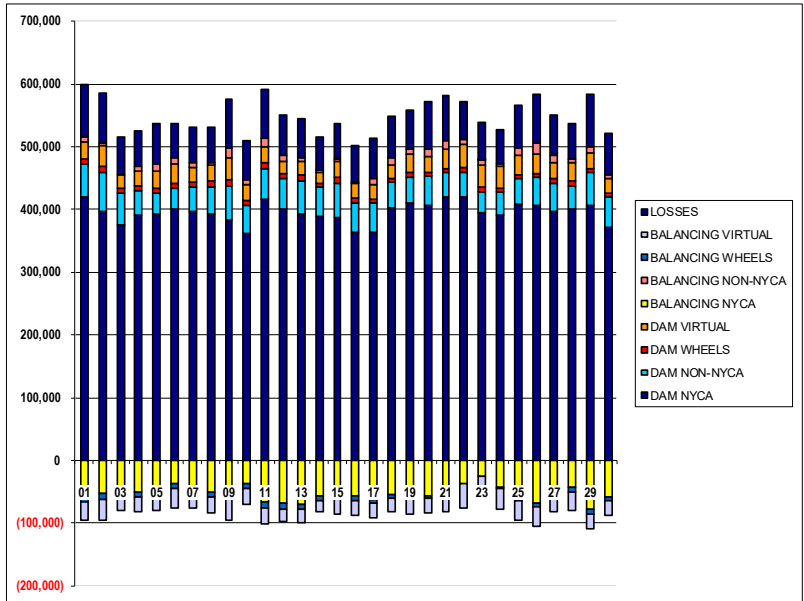
	MONDAY	TUESDAY	WEDNESDAY	THURSDAY	FRIDAY	SATURDAY	SUNDAY
					1	2	3
DAM NYCA					370,627	359,216	326,282
DAM NON-NYCA					106,511	117,351	95,434
DAM WHEELS					7,682	9,081	8,132
DAM VIRTUAL					31,834	24,797	32,233
BALANCING NYCA					28,424	17,839	3,498
BALANCING NON-NYCA					(3,004)	(4,607)	8,827
BALANCING WHEELS					(7,492)	(9,081)	(8,132)
BALANCING VIRTUAL					(31,834)	(24,797)	(32,233)
	4	5	6	7	8	9	10
DAM NYCA	311,631	328,753	313,033	319,274	321,496	333,275	315,470
DAM NON-NYCA	113,986	106,510	131,748	116,985	108,653	118,839	99,808
DAM WHEELS	8,207	7,584	7,584	7,976	8,760	8,760	8,395
DAM VIRTUAL	34,298	27,281	27,169	29,455	37,783	29,220	23,698
BALANCING NYCA	2,752	10,380	26,599	16,250	16,923	25,656	14,086
BALANCING NON-NYCA	14,733	11,466	(10,104)	3,245	(1,031)	2,854	10,443
BALANCING WHEELS	(8,207)	(7,584)	(7,584)	(7,976)	(8,760)	(8,760)	(8,195)
BALANCING VIRTUAL	(34,298)	(27,281)	(27,169)	(29,455)	(37,783)	(29,220)	(23,698)
	11	12	13	14	15	16	17
DAM NYCA	357,747	327,205	314,954	316,658	332,141	292,930	290,593
DAM NON-NYCA	114,050	118,224	123,656	108,483	117,382	114,734	114,003
DAM WHEELS	8,662	8,760	9,360	7,008	9,360	7,008	6,408
DAM VIRTUAL	29,254	30,023	34,206	33,119	24,498	32,818	35,770
BALANCING NYCA	15,788	10,017	14,000	15,452	10,954	5,211	16,164
BALANCING NON-NYCA	1,324	(949)	(6,187)	(6,263)	(9,134)	2,211	1,114
BALANCING WHEELS	(8,662)	(8,660)	(9,360)	(6,939)	(9,360)	(7,008)	(5,769)
BALANCING VIRTUAL	(29,254)	(30,023)	(34,206)	(33,119)	(24,498)	(32,818)	(35,770)
	18	19	20	21	22	23	24
DAM NYCA	322,624	330,064	328,015	359,838	349,221	338,957	322,687
DAM NON-NYCA	116,924	124,077	124,089	108,895	128,659	110,165	121,627
DAM WHEELS	6,408	8,760	6,408	6,408	6,408	6,408	6,408
DAM VIRTUAL	31,069	32,465	31,676	28,695	27,462	20,726	23,597
BALANCING NYCA	20,714	20,120	26,660	12,822	18,068	32,183	10,243
BALANCING NON-NYCA	5,656	(2,472)	8,039	11,450	(6,785)	(9,700)	(10,700)
BALANCING WHEELS	(5,020)	(6,843)	(4,704)	(378)	0	100	(1,893)
BALANCING VIRTUAL	(31,069)	(32,465)	(31,676)	(28,695)	(27,462)	(20,726)	(23,597)
	25	26	27	28	29	30	31
DAM NYCA	341,640	348,618	343,465	340,211	366,804	329,225	319,266
DAM NON-NYCA	111,737	107,818	95,214	100,574	88,259	89,846	82,175
DAM WHEELS	6,408	6,408	6,708	7,158	6,408	5,607	6,408
DAM VIRTUAL	34,877	34,612	36,662	32,776	34,691	30,327	35,409
BALANCING NYCA	9,969	18,191	26,594	25,141	16,670	20,420	15,892
BALANCING NON-NYCA	2,294	3,774	3,326	(8,598)	2,972	(5,481)	(6,553)
BALANCING WHEELS	(1,560)	(6,408)	(6,608)	(7,108)	(6,408)	(5,507)	(6,184)
BALANCING VIRTUAL	(34,877)	(34,612)	(36,662)	(32,776)	(34,691)	(30,327)	(35,409)



SETTLEMENTS REPORT
March 2024 Settlement Adjustment
April 5, 2024

Weekly Settlement – Market Withdrawals Analysis

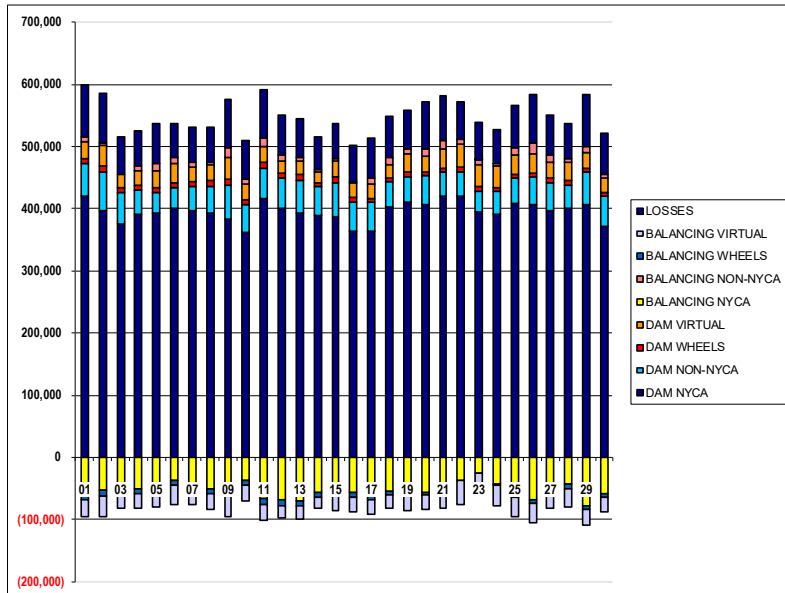
	MONDAY	TUESDAY	WEDNESDAY	THURSDAY	FRIDAY	SATURDAY	SUNDAY
					1	2	3
DAM NYCA					420,430	396,583	375,607
DAM NON-NYCA					52,059	62,834	51,055
DAM WHEELS					7,662	9,081	8,132
DAM VIRTUAL					28,479	33,782	21,149
BALANCING NYCA					(59,333)	(52,393)	(49,490)
BALANCING NON-NYCA					7,000	4,255	(1,727)
BALANCING WHEELS					(7,492)	(9,081)	(8,132)
BALANCING VIRTUAL					(28,479)	(33,782)	(21,149)
UFE/LOSSES					82,783	78,833	58,930
	4	5	6	7	8	9	10
DAM NYCA	390,692	393,848	399,940	397,714	392,204	383,403	361,623
DAM NON-NYCA	38,508	32,645	34,768	37,879	43,602	54,831	45,119
DAM WHEELS	8,207	7,584	7,584	7,976	8,760	8,760	8,395
DAM VIRTUAL	23,775	27,486	30,547	24,020	25,506	35,004	24,773
BALANCING NYCA	(49,687)	(45,403)	(36,953)	(43,547)	(50,292)	(52,306)	(36,384)
BALANCING NON-NYCA	7,721	10,688	8,963	7,826	5,314	16,285	6,923
BALANCING WHEELS	(8,207)	(7,584)	(7,584)	(7,976)	(8,760)	(8,760)	(8,195)
BALANCING VIRTUAL	(23,775)	(27,486)	(30,547)	(24,020)	(25,506)	(35,004)	(24,773)
UFE/LOSSES	56,169	65,519	54,831	58,163	55,435	78,416	62,542
	11	12	13	14	15	16	17
DAM NYCA	415,641	401,181	392,991	388,882	387,065	363,112	364,120
DAM NON-NYCA	49,466	47,416	53,403	45,919	54,009	47,891	46,389
DAM WHEELS	8,662	8,760	9,360	7,008	9,360	7,008	6,408
DAM VIRTUAL	26,656	19,836	20,298	17,747	26,802	23,178	23,326
BALANCING NYCA	(66,341)	(68,299)	(69,029)	(56,404)	(50,027)	(57,317)	(62,886)
BALANCING NON-NYCA	13,541	9,222	5,459	2,821	2,523	2,199	8,552
BALANCING WHEELS	(8,662)	(8,660)	(9,360)	(6,939)	(9,360)	(7,008)	(5,769)
BALANCING VIRTUAL	(26,656)	(19,836)	(20,298)	(17,747)	(26,802)	(23,178)	(23,326)
UFE/LOSSES	76,599	64,957	63,602	53,120	57,731	59,200	65,699
	18	19	20	21	22	23	24
DAM NYCA	402,037	410,101	406,741	419,277	420,639	395,744	390,878
DAM NON-NYCA	40,876	40,826	46,730	39,220	39,140	32,757	36,565
DAM WHEELS	6,408	8,760	6,408	6,408	6,408	6,408	6,408
DAM VIRTUAL	21,051	29,044	23,556	32,031	38,462	35,279	34,448
BALANCING NYCA	(54,623)	(49,583)	(55,632)	(49,952)	(37,545)	(24,590)	(42,059)
BALANCING NON-NYCA	12,688	7,657	12,393	13,422	6,337	9,124	4,414
BALANCING WHEELS	(5,020)	(6,843)	(4,704)	(378)	0	100	(1,893)
BALANCING VIRTUAL	(21,051)	(29,044)	(23,556)	(32,031)	(38,462)	(35,279)	(34,448)
UFE/LOSSES	64,939	62,788	76,568	71,036	60,581	58,571	54,058
	25	26	27	28	29	30	31
DAM NYCA	409,420	406,155	396,952	401,366	405,666	372,440	364,265
DAM NON-NYCA	40,158	45,534	45,160	36,509	53,257	47,742	48,633
DAM WHEELS	6,408	6,408	6,708	7,158	6,408	5,607	6,408
DAM VIRTUAL	31,310	30,832	26,612	29,633	24,209	23,214	18,486
BALANCING NYCA	(62,018)	(67,445)	(47,902)	(43,074)	(78,403)	(58,681)	(64,614)
BALANCING NON-NYCA	11,486	17,219	11,277	6,555	11,303	6,999	3,957
BALANCING WHEELS	(1,560)	(6,408)	(6,608)	(7,108)	(6,408)	(5,507)	(6,184)
BALANCING VIRTUAL	(31,310)	(30,832)	(26,612)	(29,633)	(24,209)	(23,214)	(18,486)
UFE/LOSSES	66,594	76,940	63,114	58,018	82,641	65,510	58,539



SETTLEMENTS REPORT
 March 2024 Settlement Adjustment
 April 5, 2024

Initial Settlement Adjustment – Market Withdrawals Analysis

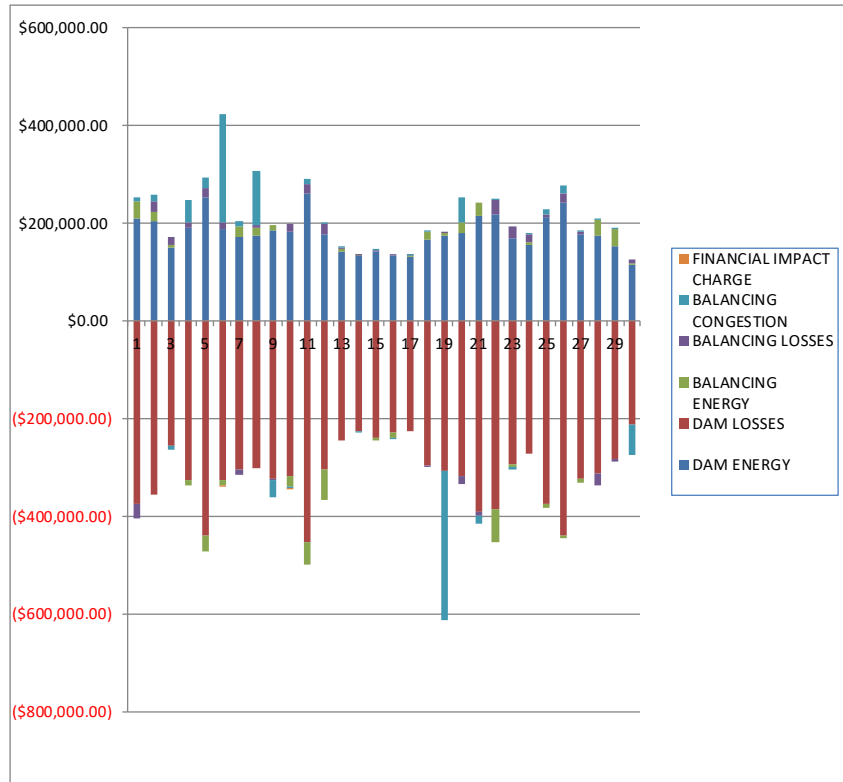
	MONDAY	TUESDAY	WEDNESDAY	THURSDAY	FRIDAY	SATURDAY	SUNDAY
					1	2	3
DAM NYCA					420,430	396,583	375,607
DAM NON-NYCA					52,059	62,834	51,055
DAM WHEELS					7,682	9,081	8,132
DAM VIRTUAL					28,479	33,782	21,149
BALANCING NYCA					(59,687)	(52,684)	(49,807)
BALANCING NON-NYCA					7,000	4,255	(1,727)
BALANCING WHEELS					(7,492)	(9,081)	(8,132)
BALANCING VIRTUAL					(28,479)	(33,782)	(21,149)
UFE/LOSSES					82,756	78,813	58,914
	4	5	6	7	8	9	10
DAM NYCA	390,692	393,848	399,940	397,714	392,204	383,403	361,623
DAM NON-NYCA	38,508	32,645	34,768	37,879	43,602	54,831	45,119
DAM WHEELS	8,207	7,584	7,584	7,976	8,760	8,760	8,395
DAM VIRTUAL	23,775	27,486	30,547	24,020	25,506	35,004	24,773
BALANCING NYCA	(49,971)	(45,589)	(37,232)	(43,832)	(50,268)	(52,319)	(36,399)
BALANCING NON-NYCA	7,721	10,688	8,963	7,826	5,314	16,285	6,923
BALANCING WHEELS	(8,207)	(7,584)	(7,584)	(7,976)	(8,760)	(8,760)	(8,195)
BALANCING VIRTUAL	(23,775)	(27,486)	(30,547)	(24,020)	(25,506)	(35,004)	(24,773)
UFE/LOSSES	56,153	65,517	54,838	56,167	55,189	78,424	62,551
	11	12	13	14	15	16	17
DAM NYCA	415,641	401,181	392,991	388,882	387,065	363,112	364,120
DAM NON-NYCA	49,466	47,416	53,403	45,919	54,009	47,891	46,389
DAM WHEELS	8,662	8,760	9,360	7,008	9,360	7,008	6,408
DAM VIRTUAL	26,656	19,836	20,298	17,747	26,802	23,178	23,326
BALANCING NYCA	(66,337)	(68,278)	(69,032)	(56,407)	(49,961)	(57,317)	(62,886)
BALANCING NON-NYCA	13,541	9,222	5,459	2,821	2,523	2,199	8,552
BALANCING WHEELS	(8,662)	(8,660)	(9,360)	(6,939)	(9,360)	(7,008)	(5,769)
BALANCING VIRTUAL	(26,656)	(19,836)	(20,298)	(17,747)	(26,802)	(23,178)	(23,326)
UFE/LOSSES	76,597	64,957	63,602	53,116	57,706	59,200	65,699
	18	19	20	21	22	23	24
DAM NYCA	402,037	410,101	406,741	419,277	420,639	395,744	390,878
DAM NON-NYCA	40,876	40,826	46,730	39,220	39,140	32,757	36,565
DAM WHEELS	6,408	8,760	6,408	6,408	6,408	6,408	6,408
DAM VIRTUAL	21,051	29,044	23,556	32,031	38,462	35,279	34,448
BALANCING NYCA	(54,623)	(49,583)	(55,631)	(49,925)	(37,536)	(24,590)	(42,059)
BALANCING NON-NYCA	12,688	7,657	12,393	13,422	6,337	9,124	4,414
BALANCING WHEELS	(5,020)	(6,843)	(4,704)	(378)	0	100	(1,893)
BALANCING VIRTUAL	(21,051)	(29,044)	(23,556)	(32,031)	(38,462)	(35,279)	(34,448)
UFE/LOSSES	64,939	62,788	76,570	71,010	60,584	58,571	54,058
	25	26	27	28	29	30	31
DAM NYCA	409,420	406,155	396,952	401,366	405,666	372,440	364,265
DAM NON-NYCA	40,158	45,534	45,160	36,509	53,257	47,742	48,633
DAM WHEELS	6,408	6,408	6,708	7,158	6,408	5,607	6,408
DAM VIRTUAL	31,310	30,832	26,612	29,633	24,209	23,214	18,486
BALANCING NYCA	(62,109)	(67,446)	(47,917)	(43,085)	(77,583)	(58,430)	(64,376)
BALANCING NON-NYCA	11,486	17,219	11,277	6,555	11,303	6,999	3,957
BALANCING WHEELS	(1,560)	(6,408)	(6,608)	(7,109)	(6,408)	(5,507)	(6,184)
BALANCING VIRTUAL	(31,310)	(30,832)	(26,612)	(29,633)	(24,209)	(23,214)	(18,486)
UFE/LOSSES	66,685	76,940	63,127	55,983	82,063	65,259	58,300



SETTLEMENTS REPORT
 March 2024 Settlement Adjustment
 April 5, 2024

Weekly Settlement – Market Residuals Analysis

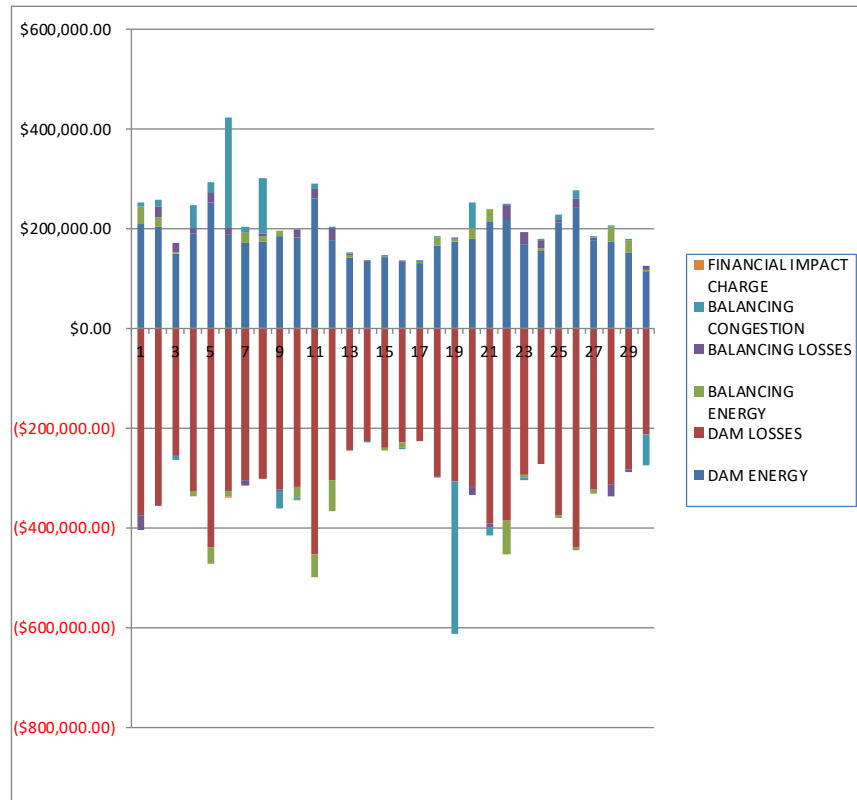
	MONDAY	TUESDAY	WEDNESDAY	THURSDAY	FRIDAY	SATURDAY	SUNDAY
					1	2	3
DAM ENERGY					\$208,603.31	\$203,877.99	\$148,703.47
DAM LOSSES					(\$375,578.07)	(\$356,492.56)	(\$254,417.72)
BALANCING ENERGY					\$36,016.09	\$18,489.90	\$5,579.34
BALANCING LOSSES					(\$28,799.01)	\$22,940.67	\$17,124.55
BALANCING CONGESTION					\$7,897.80	\$12,213.61	(\$9,886.82)
FINACIAL IMPACT CHARGE					\$0.00	\$0.00	\$0.00
	4	5	6	7	8	9	10
DAM ENERGY	\$191,292.51	\$253,185.68	\$186,737.88	\$170,650.59	\$174,758.66	\$185,191.63	\$181,840.35
DAM LOSSES	(\$325,605.76)	(\$438,965.08)	(\$326,648.78)	(\$304,703.66)	(\$300,820.12)	(\$323,805.97)	(\$318,179.57)
BALANCING ENERGY	(\$10,013.48)	(\$32,320.50)	(\$9,245.41)	\$21,410.97	\$15,393.28	\$9,470.74	(\$20,256.69)
BALANCING LOSSES	\$11,108.79	\$17,429.01	\$15,595.90	(\$11,015.37)	\$6,776.95	(\$2,195.48)	\$15,906.90
BALANCING CONGESTION	\$44,077.95	\$22,881.02	\$221,200.51	\$10,558.11	\$110,900.43	(\$34,922.12)	(\$3,899.26)
FINACIAL IMPACT CHARGE	\$0.00	\$0.00	(\$1,009.80)	\$0.00	\$0.00	\$0.00	(\$45.99)
	11	12	13	14	15	16	17
DAM ENERGY	\$261,292.36	\$176,760.71	\$142,136.72	\$133,394.77	\$142,767.91	\$133,717.56	\$130,990.07
DAM LOSSES	(\$454,464.72)	(\$303,662.81)	(\$244,026.52)	(\$225,139.89)	(\$238,951.03)	(\$229,571.83)	(\$225,774.71)
BALANCING ENERGY	(\$44,068.93)	(\$63,150.59)	\$4,780.36	\$490.37	(\$6,703.97)	(\$8,741.87)	\$1,712.12
BALANCING LOSSES	\$18,031.20	\$23,130.22	\$1,705.82	\$1,850.90	\$603.01	\$1,655.51	\$1,545.37
BALANCING CONGESTION	\$10,943.59	\$6.62	\$521.87	(\$4,251.01)	\$54.48	(\$15.62)	\$598.75
FINACIAL IMPACT CHARGE	\$0.00	\$0.00	\$0.00	\$0.00	\$0.00	\$0.00	\$0.00
	18	19	20	21	22	23	24
DAM ENERGY	\$166,384.91	\$174,595.09	\$178,540.56	\$215,282.29	\$216,187.66	\$168,997.01	\$156,258.61
DAM LOSSES	(\$295,329.32)	(\$307,863.86)	(\$318,470.07)	(\$390,571.98)	(\$384,311.51)	(\$293,505.12)	(\$272,253.55)
BALANCING ENERGY	\$17,110.10	\$4,078.90	\$21,671.51	\$25,290.60	(\$69,771.83)	(\$5,852.11)	\$3,193.66
BALANCING LOSSES	(\$3,877.86)	\$4,734.25	(\$16,383.14)	(\$8,014.51)	\$29,808.29	\$23,498.15	\$16,555.85
BALANCING CONGESTION	\$1,767.78	(\$304,350.89)	\$51,193.07	(\$16,381.90)	\$1,361.66	(\$6,195.80)	\$17.92
FINACIAL IMPACT CHARGE	\$0.00	\$0.00	\$0.00	\$0.00	\$0.00	\$0.00	\$0.00
	25	26	27	28	29	30	31
DAM ENERGY	\$211,227.29	\$242,200.31	\$177,716.15	\$174,358.55	\$152,736.28	\$115,112.69	\$103,896.21
DAM LOSSES	(\$374,685.54)	(\$438,797.01)	(\$323,079.82)	(\$312,017.67)	(\$283,577.13)	(\$211,929.21)	(\$186,121.07)
BALANCING ENERGY	(\$6,934.39)	(\$6,553.53)	(\$8,174.72)	\$31,084.01	\$34,923.59	\$1,445.69	(\$1,882.82)
BALANCING LOSSES	\$6,448.21	\$18,353.99	\$4,280.79	(\$24,526.16)	(\$3,938.10)	\$8,525.57	\$6,817.25
BALANCING CONGESTION	\$11,422.46	\$17,600.13	\$4,106.56	\$2,544.29	\$3,133.43	(\$61,670.05)	\$7,943.69
FINACIAL IMPACT CHARGE	\$0.00	\$0.00	\$0.00	\$0.00	\$0.00	\$0.00	\$0.00



SETTLEMENTS REPORT
March 2024 Settlement Adjustment
April 5, 2024

Initial Settlement Adjustment – Market Residuals Analysis

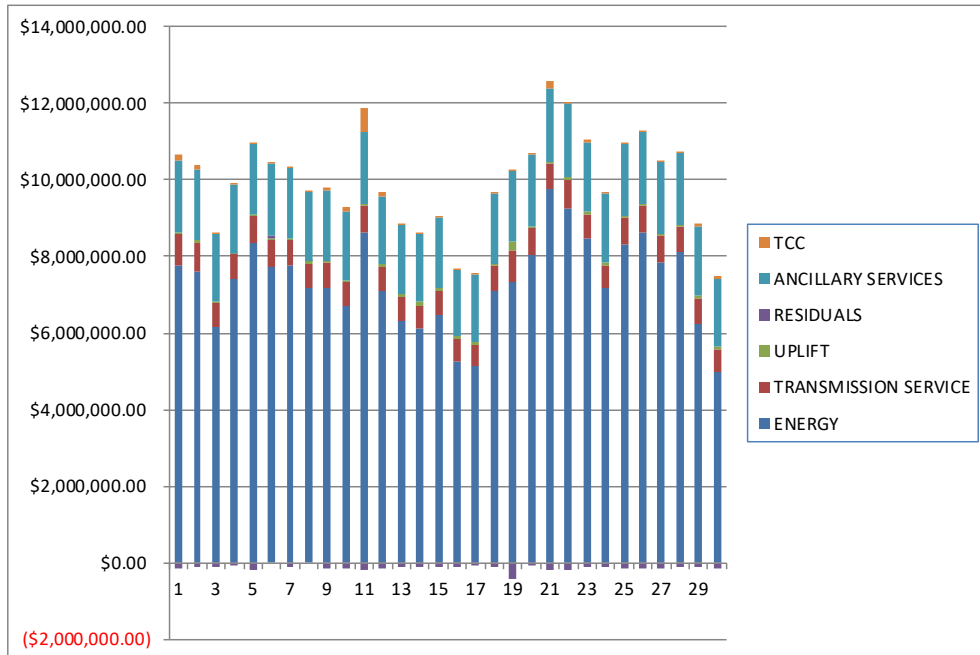
	MONDAY	TUESDAY	WEDNESDAY	THURSDAY	FRIDAY	SATURDAY	SUNDAY
					1	2	3
DAM ENERGY					\$208,603.32	\$203,877.99	\$148,703.47
DAM LOSSES					(\$375,578.06)	(\$356,492.55)	(\$254,417.72)
BALANCING ENERGY					\$35,111.62	\$17,821.97	\$5,104.51
BALANCING LOSSES					(\$28,616.94)	\$23,065.76	\$17,217.88
BALANCING CONGESTION					\$7,897.80	\$12,213.61	(\$9,886.83)
FINACIAL IMPACT CHARGE					\$0.00	\$0.00	\$0.00
	4	5	6	7	8	9	10
DAM ENERGY	\$191,292.52	\$253,185.69	\$186,737.88	\$170,650.60	\$174,758.67	\$185,191.63	\$181,840.35
DAM LOSSES	(\$325,605.76)	(\$438,965.08)	(\$326,648.79)	(\$304,703.66)	(\$300,820.12)	(\$323,805.97)	(\$318,179.57)
BALANCING ENERGY	(\$10,399.26)	(\$32,449.43)	(\$9,267.20)	\$21,411.25	\$9,104.05	\$9,456.00	(\$20,234.61)
BALANCING LOSSES	\$11,163.34	\$17,589.38	\$15,831.28	(\$10,803.15)	\$6,959.82	(\$2,188.72)	\$15,908.51
BALANCING CONGESTION	\$44,140.93	\$22,993.26	\$221,726.76	\$10,713.82	\$110,746.65	(\$34,961.93)	(\$3,953.35)
FINACIAL IMPACT CHARGE	\$0.00	\$0.00	(\$1,009.82)	\$0.00	\$0.00	\$0.00	(\$45.97)
	11	12	13	14	15	16	17
DAM ENERGY	\$261,292.36	\$176,760.71	\$142,136.71	\$133,394.77	\$142,767.91	\$133,717.56	\$130,990.07
DAM LOSSES	(\$454,464.73)	(\$303,662.82)	(\$244,026.53)	(\$225,139.90)	(\$238,951.03)	(\$229,571.83)	(\$225,774.71)
BALANCING ENERGY	(\$44,261.51)	(\$62,998.96)	\$4,780.77	\$445.72	(\$7,239.29)	(\$8,741.87)	\$1,712.12
BALANCING LOSSES	\$18,677.84	\$23,143.64	\$1,704.00	\$1,847.62	\$602.01	\$1,655.51	\$1,545.37
BALANCING CONGESTION	\$10,942.79	\$7.24	\$521.87	(\$4,248.94)	\$55.72	(\$15.62)	\$598.75
FINACIAL IMPACT CHARGE	\$0.00	\$0.00	\$0.00	\$0.00	\$0.00	\$0.00	\$0.00
	18	19	20	21	22	23	24
DAM ENERGY	\$166,384.91	\$174,595.08	\$178,540.56	\$215,282.29	\$216,187.66	\$168,997.01	\$156,258.61
DAM LOSSES	(\$295,329.32)	(\$307,863.85)	(\$318,470.07)	(\$390,571.98)	(\$384,311.51)	(\$293,505.12)	(\$272,253.54)
BALANCING ENERGY	\$17,110.10	\$4,081.51	\$21,739.66	\$24,688.36	(\$67,675.80)	(\$5,851.64)	\$3,194.74
BALANCING LOSSES	(\$3,877.86)	\$4,734.43	(\$16,387.93)	(\$8,036.23)	\$29,928.60	\$23,498.34	\$16,556.02
BALANCING CONGESTION	\$1,767.78	(\$304,350.89)	\$51,204.52	(\$16,361.45)	\$1,474.70	(\$6,195.19)	\$18.54
FINACIAL IMPACT CHARGE	\$0.00	\$0.00	\$0.00	\$0.00	\$0.00	\$0.00	\$0.00
	25	26	27	28	29	30	31
DAM ENERGY	\$211,227.29	\$242,200.31	\$177,716.15	\$174,358.55	\$152,736.28	\$115,112.69	\$103,896.21
DAM LOSSES	(\$374,685.53)	(\$438,797.00)	(\$323,079.82)	(\$312,017.66)	(\$283,577.13)	(\$211,929.21)	(\$186,121.07)
BALANCING ENERGY	(\$4,970.99)	(\$6,553.55)	(\$7,744.76)	\$30,222.98	\$23,654.48	\$1,445.69	(\$1,882.82)
BALANCING LOSSES	\$6,537.44	\$18,354.92	\$4,306.14	(\$24,558.02)	(\$3,562.76)	\$8,525.57	\$6,817.25
BALANCING CONGESTION	\$11,422.46	\$17,599.42	\$4,117.14	\$2,550.62	\$2,990.98	(\$61,670.05)	\$7,943.69
FINACIAL IMPACT CHARGE	\$0.00	\$0.00	\$0.00	\$0.00	\$0.00	\$0.00	\$0.00



SETTLEMENTS REPORT
March 2024 Settlement Adjustment
April 5, 2024

Weekly Settlement – Market Costs Analysis

	MONDAY	TUESDAY	WEDNESDAY	THURSDAY	FRIDAY	SATURDAY	SUNDAY
					1	2	3
ENERGY					\$7,772,105.85	\$7,610,857.84	\$6,168,677.62
TRANSMISSION SERVICE					\$809,552.81	\$746,332.00	\$620,241.36
UPLIFT					\$24,320.50	\$53,180.00	\$19,906.25
RESIDUALS					(\$151,859.88)	(\$98,970.39)	(\$92,897.18)
ANCILLARY SERVICES					\$1,903,787.92	\$1,865,553.95	\$1,781,123.59
TCC					\$143,064.87	\$98,994.25	\$1,984.46
	4	5	6	7	8	9	10
ENERGY	\$7,406,054.62	\$8,342,578.44	\$7,739,060.40	\$7,753,117.67	\$7,173,200.93	\$7,177,588.04	\$6,692,966.85
TRANSMISSION SERVICE	\$660,072.35	\$707,724.47	\$670,618.17	\$660,129.87	\$638,574.87	\$679,828.33	\$625,804.86
UPLIFT	\$12,156.68	\$40,245.66	\$60,994.08	\$40,230.81	\$50,370.01	\$37,780.82	\$56,855.64
RESIDUALS	(\$89,139.99)	(\$177,789.87)	\$86,630.30	(\$113,099.36)	\$7,009.20	(\$166,261.20)	(\$144,634.26)
ANCILLARY SERVICES	\$1,812,814.06	\$1,852,228.30	\$1,860,449.31	\$1,838,956.76	\$1,817,217.53	\$1,840,459.04	\$1,784,353.66
TCC	\$23,853.03	\$33,892.40	\$9,061.83	\$3,946.14	\$12,167.54	\$80,326.27	\$121,348.85
	11	12	13	14	15	16	17
ENERGY	\$8,626,828.07	\$7,094,046.17	\$6,303,928.96	\$6,099,692.60	\$6,485,935.32	\$5,264,717.31	\$5,136,512.24
TRANSMISSION SERVICE	\$706,931.09	\$646,368.58	\$625,296.48	\$599,499.55	\$601,338.42	\$560,875.10	\$563,618.39
UPLIFT	\$48,740.61	\$50,536.31	\$71,864.61	\$111,837.60	\$103,906.72	\$86,597.93	\$62,310.81
RESIDUALS	(\$208,266.50)	(\$166,915.85)	(\$94,881.75)	(\$93,654.86)	(\$102,229.60)	(\$102,956.25)	(\$90,928.40)
ANCILLARY SERVICES	\$1,866,881.34	\$1,786,775.88	\$1,809,504.14	\$1,791,714.00	\$1,813,524.54	\$1,727,544.51	\$1,769,650.34
TCC	\$631,044.18	\$87,286.34	\$35,569.21	\$10,863.33	\$15,309.74	\$2,826.91	\$8,178.23
	18	19	20	21	22	23	24
ENERGY	\$7,100,037.12	\$7,348,184.85	\$8,047,961.30	\$9,747,572.55	\$9,265,521.35	\$8,461,339.71	\$7,167,638.21
TRANSMISSION SERVICE	\$656,163.16	\$812,581.52	\$688,585.63	\$690,143.27	\$725,986.49	\$646,287.95	\$609,633.36
UPLIFT	\$42,965.19	\$225,838.99	\$51,244.80	\$20,489.21	\$97,939.82	\$48,173.51	\$73,387.23
RESIDUALS	(\$113,944.39)	(\$428,806.51)	(\$83,448.07)	(\$174,395.50)	(\$206,725.73)	(\$113,057.67)	(\$96,227.51)
ANCILLARY SERVICES	\$1,840,233.66	\$1,832,369.62	\$1,864,594.16	\$1,943,435.09	\$1,890,618.61	\$1,829,824.03	\$1,804,447.27
TCC	\$13,657.66	\$29,980.22	\$56,266.52	\$186,591.53	\$70,233.64	\$63,149.20	\$813.21
	25	26	27	28	29	30	31
ENERGY	\$8,305,770.79	\$8,607,386.14	\$7,855,038.93	\$8,105,343.81	\$6,239,420.42	\$4,985,032.05	\$4,574,943.03
TRANSMISSION SERVICE	\$695,497.47	\$733,652.16	\$675,743.73	\$667,351.53	\$662,183.07	\$576,665.32	\$546,334.87
UPLIFT	\$38,706.89	\$38,307.00	\$68,193.63	\$52,257.69	\$68,158.52	\$72,899.41	\$93,031.79
RESIDUALS	(\$152,521.97)	(\$167,196.11)	(\$145,151.04)	(\$128,556.98)	(\$96,721.93)	(\$148,515.31)	(\$69,346.74)
ANCILLARY SERVICES	\$1,882,966.48	\$1,875,884.58	\$1,849,343.53	\$1,889,750.15	\$1,806,290.44	\$1,765,922.06	\$1,735,869.42
TCC	\$7,398.21	\$34,899.57	\$23,758.27	\$18,144.74	\$71,957.92	\$101,594.71	\$4,228.12



SETTLEMENTS REPORT
March 2024 Settlement Adjustment
April 5, 2024

Initial Settlement Adjustment – Market Costs Analysis

	MONDAY	TUESDAY	WEDNESDAY	THURSDAY	FRIDAY	SATURDAY	SUNDAY
					1	2	3
ENERGY					\$7,762,044.54	\$7,603,509.60	\$6,162,206.94
TRANSMISSION SERVICE					\$809,124.78	\$745,979.76	\$619,858.08
UPLIFT					\$24,320.51	\$53,180.00	\$19,906.25
RESIDUALS					(\$152,582.26)	(\$99,513.22)	(\$93,278.69)
ANCILLARY SERVICES					\$1,903,160.35	\$1,865,032.43	\$1,780,555.13
TCC					\$143,064.87	\$98,994.25	\$1,984.46
	4	5	6	7	8	9	10
ENERGY	\$7,400,196.81	\$8,337,893.89	\$7,728,410.39	\$7,744,639.07	\$7,174,578.57	\$7,177,455.96	\$6,692,835.13
TRANSMISSION SERVICE	\$659,728.92	\$707,498.49	\$670,281.54	\$659,785.65	\$638,604.43	\$679,812.73	\$625,787.75
UPLIFT	\$12,156.48	\$40,245.79	\$61,003.88	\$40,230.80	\$50,298.13	\$37,752.29	\$56,853.89
RESIDUALS	(\$89,408.23)	(\$177,646.18)	\$87,370.11	(\$112,731.14)	\$749.07	(\$166,308.99)	(\$144,664.64)
ANCILLARY SERVICES	\$1,812,302.11	\$1,851,893.75	\$1,859,950.54	\$1,838,445.88	\$1,817,186.89	\$1,840,438.46	\$1,784,331.00
TCC	\$23,853.03	\$33,892.40	\$9,061.83	\$3,946.14	\$12,167.54	\$80,326.27	\$121,348.85
	11	12	13	14	15	16	17
ENERGY	\$8,626,446.17	\$7,094,638.68	\$6,303,865.75	\$6,099,632.42	\$6,487,015.08	\$5,264,717.31	\$5,136,512.24
TRANSMISSION SERVICE	\$706,936.59	\$646,394.31	\$625,292.64	\$599,495.83	\$601,418.33	\$560,875.10	\$563,618.39
UPLIFT	\$48,740.62	\$50,536.30	\$71,864.62	\$59,889.40	\$51,598.58	\$86,597.93	\$62,310.81
RESIDUALS	(\$207,813.25)	(\$166,750.19)	(\$94,883.18)	(\$93,700.73)	(\$102,764.68)	(\$102,956.25)	(\$90,928.40)
ANCILLARY SERVICES	\$1,866,889.04	\$1,786,814.23	\$1,809,498.42	\$1,791,700.67	\$1,813,633.55	\$1,727,544.51	\$1,769,650.34
TCC	\$631,044.18	\$87,286.34	\$35,569.21	\$10,863.33	\$15,309.74	\$2,826.91	\$8,178.23
	18	19	20	21	22	23	24
ENERGY	\$7,100,037.12	\$7,348,183.05	\$8,048,244.56	\$9,748,227.70	\$9,274,822.23	\$8,461,338.66	\$7,167,635.61
TRANSMISSION SERVICE	\$656,163.16	\$812,581.52	\$688,586.84	\$690,175.61	\$725,996.76	\$646,287.95	\$609,633.36
UPLIFT	\$42,965.19	\$177,186.60	\$51,244.80	\$20,489.21	\$97,939.81	\$48,173.51	\$73,387.23
RESIDUALS	(\$113,944.39)	(\$428,803.72)	(\$83,373.26)	(\$175,019.01)	(\$204,396.35)	(\$113,056.60)	(\$96,225.63)
ANCILLARY SERVICES	\$1,840,233.66	\$1,832,365.71	\$1,864,613.69	\$1,943,473.98	\$1,890,633.76	\$1,829,824.03	\$1,804,447.28
TCC	\$13,657.66	\$29,980.22	\$56,266.52	\$186,591.53	\$70,233.64	\$63,149.20	\$813.21
	25	26	27	28	29	30	31
ENERGY	\$8,303,714.66	\$8,607,368.06	\$7,854,520.90	\$8,104,995.77	\$6,254,805.74	\$4,985,032.05	\$4,574,943.03
TRANSMISSION SERVICE	\$695,387.36	\$733,651.15	\$675,725.90	\$667,337.63	\$663,175.22	\$576,665.32	\$546,334.87
UPLIFT	\$38,706.90	\$38,306.99	\$68,193.63	\$52,257.69	\$68,158.52	\$72,899.41	\$93,031.79
RESIDUALS	(\$150,469.33)	(\$167,195.90)	(\$144,685.15)	(\$129,443.53)	(\$107,758.15)	(\$148,515.31)	(\$69,346.74)
ANCILLARY SERVICES	\$1,882,835.24	\$1,875,883.07	\$1,849,321.66	\$1,889,717.02	\$1,807,559.51	\$1,765,922.06	\$1,735,869.42
TCC	\$7,398.21	\$34,899.57	\$23,758.27	\$18,144.74	\$71,957.92	\$101,594.71	\$4,228.12

