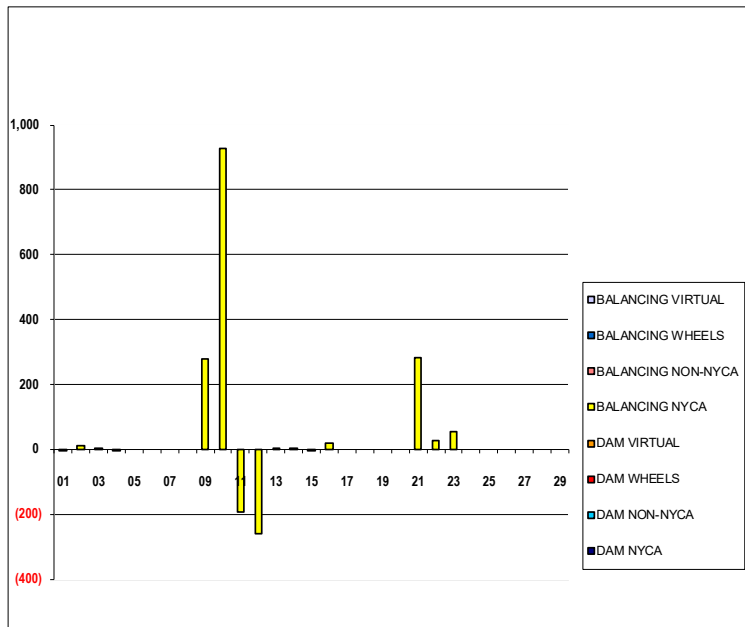


SETTLEMENTS REPORT  
February 2024 Settlement Adjustment  
March 7, 2024

**Initial – Market Supply Delta Analysis**

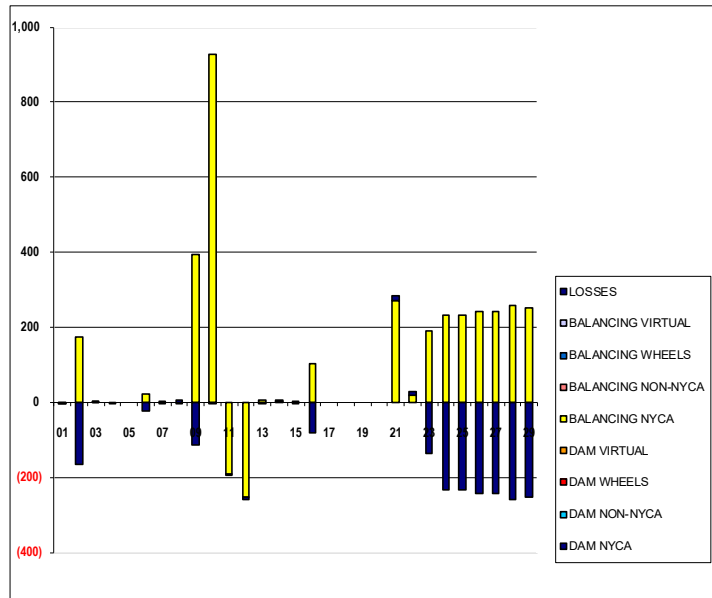
	MONDAY	TUESDAY	WEDNESDAY	THURSDAY	FRIDAY	SATURDAY	SUNDAY
				1	2	3	4
DAM NYCA				0	0	0	0
DAM NON-NYCA				0	0	0	0
DAM WHEELS				0	0	0	0
DAM VIRTUAL				0	0	0	0
BALANCING NYCA				(1)	10	2	(1)
BALANCING NON-NYCA				0	0	0	0
BALANCING WHEELS				0	0	0	0
BALANCING VIRTUAL				0	0	0	0
	5	6	7	8	9	10	11
DAM NYCA	0	0	0	0	0	0	0
DAM NON-NYCA	0	0	0	0	0	0	0
DAM WHEELS	0	0	0	0	0	0	0
DAM VIRTUAL	0	0	0	0	0	0	0
BALANCING NYCA	0	0	0	0	279	926	(195)
BALANCING NON-NYCA	0	0	0	0	0	0	0
BALANCING WHEELS	0	0	0	0	0	0	0
BALANCING VIRTUAL	0	0	0	0	0	0	0
	12	13	14	15	16	17	18
DAM NYCA	0	0	0	0	0	0	0
DAM NON-NYCA	0	0	0	0	0	0	0
DAM WHEELS	0	0	0	0	0	0	0
DAM VIRTUAL	0	0	0	0	0	0	0
BALANCING NYCA	(259)	4	2	(3)	21	0	0
BALANCING NON-NYCA	0	0	0	0	0	0	0
BALANCING WHEELS	0	0	0	0	0	0	0
BALANCING VIRTUAL	0	0	0	0	0	0	0
	19	20	21	22	23	24	25
DAM NYCA	0	0	0	0	0	0	0
DAM NON-NYCA	0	0	0	0	0	0	0
DAM WHEELS	0	0	0	0	0	0	0
DAM VIRTUAL	0	0	0	0	0	0	0
BALANCING NYCA	0	0	283	27	55	0	0
BALANCING NON-NYCA	0	0	0	0	0	0	0
BALANCING WHEELS	0	0	0	0	0	0	0
BALANCING VIRTUAL	0	0	0	0	0	0	0
	26	27	28	29			
DAM NYCA	0	0	0	0			
DAM NON-NYCA	0	0	0	0			
DAM WHEELS	0	0	0	0			
DAM VIRTUAL	0	0	0	0			
BALANCING NYCA	0	0	0	0			
BALANCING NON-NYCA	0	0	0	0			
BALANCING WHEELS	0	0	0	0			
BALANCING VIRTUAL	0	0	0	0			



SETTLEMENTS REPORT  
February 2024 Settlement Adjustment  
March 7, 2024

**Initial – Market Withdrawals Delta Analysis**

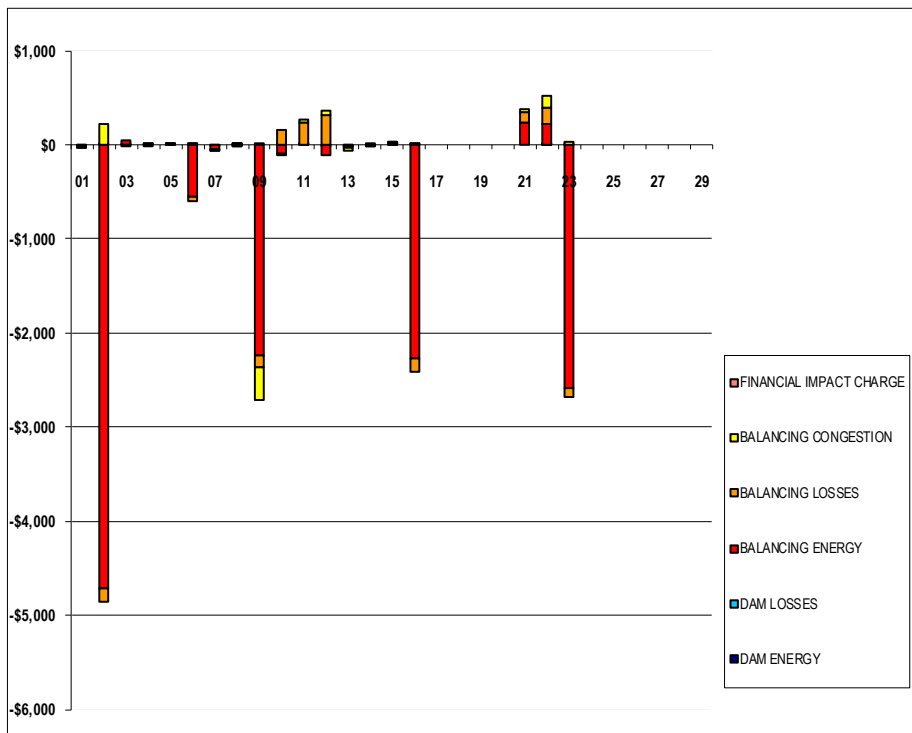
	MONDAY	TUESDAY	WEDNESDAY	THURSDAY	FRIDAY	SATURDAY	SUNDAY
				1	2	3	4
DAM NYCA				0	0	0	0
DAM NON-NYCA				0	0	0	0
DAM WHEELS				0	0	0	0
DAM VIRTUAL				0	0	0	0
BALANCING NYCA				(1)	175	0	(1)
BALANCING NON-NYCA				0	0	0	0
BALANCING WHEELS				0	0	0	0
BALANCING VIRTUAL				0	0	0	0
UFE/LOSSES				(0)	(165)	1	0
	5	6	7	8	9	10	11
DAM NYCA	0	0	0	0	0	0	0
DAM NON-NYCA	0	0	0	0	0	0	0
DAM WHEELS	0	0	0	0	0	0	0
DAM VIRTUAL	0	0	0	0	0	0	0
BALANCING NYCA	0	22	1	(4)	392	928	(192)
BALANCING NON-NYCA	0	0	0	0	0	0	0
BALANCING WHEELS	0	0	0	0	0	0	0
BALANCING VIRTUAL	0	0	0	0	0	0	0
UFE/LOSSES	0	(22)	(1)	4	(114)	(2)	(3)
	12	13	14	15	16	17	18
DAM NYCA	0	0	0	0	0	0	0
DAM NON-NYCA	0	0	0	0	0	0	0
DAM WHEELS	0	0	0	0	0	0	0
DAM VIRTUAL	0	0	0	0	0	0	0
BALANCING NYCA	(252)	5	1	(3)	104	0	0
BALANCING NON-NYCA	0	0	0	0	0	0	0
BALANCING WHEELS	0	0	0	0	0	0	0
BALANCING VIRTUAL	0	0	0	0	0	0	0
UFE/LOSSES	(6)	(1)	1	0	(83)	0	0
	19	20	21	22	23	24	25
DAM NYCA	0	0	0	0	0	0	0
DAM NON-NYCA	0	0	0	0	0	0	0
DAM WHEELS	0	0	0	0	0	0	0
DAM VIRTUAL	0	0	0	0	0	0	0
BALANCING NYCA	0	0	272	18	190	232	234
BALANCING NON-NYCA	0	0	0	0	0	0	0
BALANCING WHEELS	0	0	0	0	0	0	0
BALANCING VIRTUAL	0	0	0	0	0	0	0
UFE/LOSSES	0	0	11	9	(135)	(232)	(234)
	26	27	28	29			
DAM NYCA	0	0	0	0			
DAM NON-NYCA	0	0	0	0			
DAM WHEELS	0	0	0	0			
DAM VIRTUAL	0	0	0	0			
BALANCING NYCA	242	243	259	252			
BALANCING NON-NYCA	0	0	0	0			
BALANCING WHEELS	0	0	0	0			
BALANCING VIRTUAL	0	0	0	0			
UFE/LOSSES	(242)	(243)	(259)	(252)			



SETTLEMENTS REPORT  
February 2024 Settlement Adjustment  
March 7, 2024

**Initial – Market Residuals Delta Analysis**

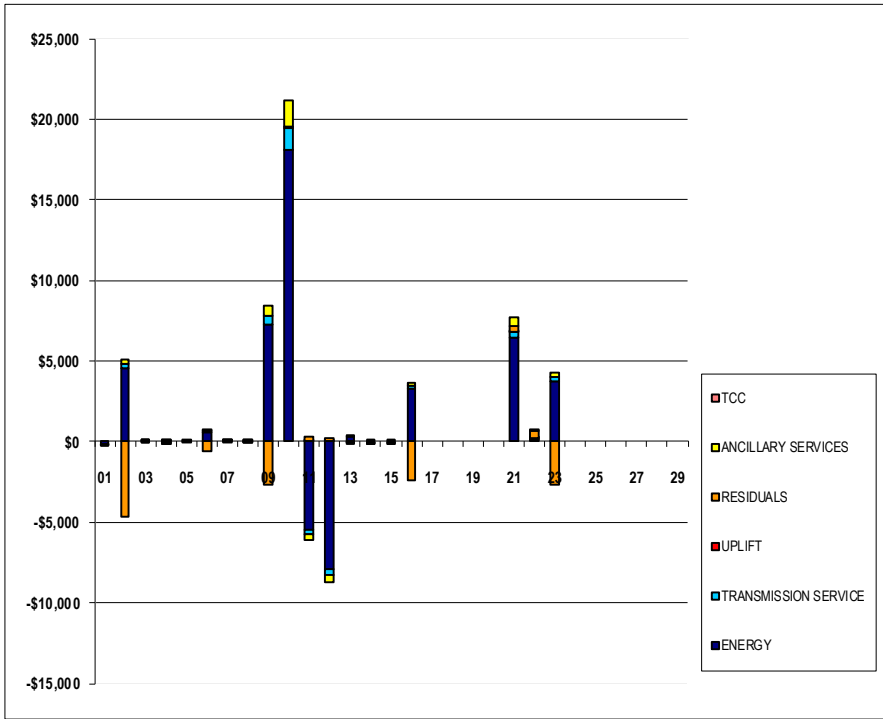
	MONDAY	TUESDAY	WEDNESDAY	THURSDAY	FRIDAY	SATURDAY	SUNDAY
				1	2	3	4
DAM ENERGY				\$0.00	\$0.01	\$0.00	\$0.00
DAM LOSSES				(\$0.01)	\$0.00	\$0.01	\$0.00
BALANCING ENERGY				(\$20.15)	(\$4,708.01)	\$47.48	\$3.33
BALANCING LOSSES				(\$1.93)	(\$152.72)	(\$5.20)	\$0.48
BALANCING CONGESTION				(\$0.05)	\$224.87	\$0.00	(\$0.01)
FINANCIAL IMPACT CHARGE				\$0.00	\$0.00	\$0.00	\$0.00
	5	6	7	8	9	10	11
DAM ENERGY	\$0.00	\$0.01	(\$0.01)	(\$0.01)	\$0.01	\$0.01	\$0.01
DAM LOSSES	\$0.00	\$0.00	\$0.00	\$0.01	\$0.00	\$0.01	\$0.00
BALANCING ENERGY	\$4.00	(\$558.14)	(\$41.94)	\$3.33	(\$2,246.13)	(\$97.17)	\$2.97
BALANCING LOSSES	\$0.11	(\$40.00)	(\$2.47)	(\$0.05)	(\$119.96)	\$160.97	\$228.03
BALANCING CONGESTION	\$0.02	\$0.09	(\$0.30)	\$0.73	(\$341.08)	(\$6.67)	\$29.30
FINANCIAL IMPACT CHARGE	\$0.00	\$0.00	\$0.00	\$0.00	\$0.00	\$0.00	\$0.00
	12	13	14	15	16	17	18
DAM ENERGY	(\$0.01)	\$0.00	\$0.00	\$0.00	\$0.01	\$0.00	\$0.00
DAM LOSSES	\$0.00	(\$0.01)	\$0.00	\$0.01	\$0.00	\$0.00	\$0.00
BALANCING ENERGY	(\$113.84)	(\$16.05)	\$10.18	\$8.92	(\$2,278.68)	\$0.00	\$0.00
BALANCING LOSSES	\$312.76	(\$11.86)	(\$2.93)	\$1.51	(\$138.74)	\$0.00	\$0.00
BALANCING CONGESTION	\$54.89	(\$37.81)	(\$19.67)	\$0.40	\$8.92	\$0.00	\$0.00
FINANCIAL IMPACT CHARGE	\$0.00	\$0.00	\$0.00	\$0.00	\$0.00	\$0.00	\$0.00
	19	20	21	22	23	24	25
DAM ENERGY	\$0.00	\$0.00	\$0.00	\$0.01	\$0.01	\$0.00	\$0.00
DAM LOSSES	\$0.00	\$0.00	\$0.00	\$0.01	\$0.00	\$0.00	\$0.00
BALANCING ENERGY	\$0.00	\$0.00	\$236.90	\$222.06	(\$2,578.87)	\$0.00	\$0.00
BALANCING LOSSES	\$0.00	\$0.00	\$109.41	\$178.51	(\$102.94)	\$0.00	\$0.00
BALANCING CONGESTION	\$0.00	\$0.00	\$29.40	\$120.47	\$26.63	\$0.00	\$0.00
FINANCIAL IMPACT CHARGE	\$0.00	\$0.00	\$0.00	\$0.00	\$0.00	\$0.00	\$0.00
	26	27	28	29			
DAM ENERGY	\$0.00	\$0.00	\$0.00	\$0.00			
DAM LOSSES	\$0.00	\$0.00	\$0.00	\$0.00			
BALANCING ENERGY	\$0.00	\$0.00	\$0.00	\$0.00			
BALANCING LOSSES	\$0.00	\$0.00	\$0.00	\$0.00			
BALANCING CONGESTION	\$0.00	\$0.00	\$0.00	\$0.00			
FINANCIAL IMPACT CHARGE	\$0.00	\$0.00	\$0.00	\$0.00			



SETTLEMENTS REPORT  
February 2024 Settlement Adjustment  
March 7, 2024

**Initial – Market Costs Delta Analysis**

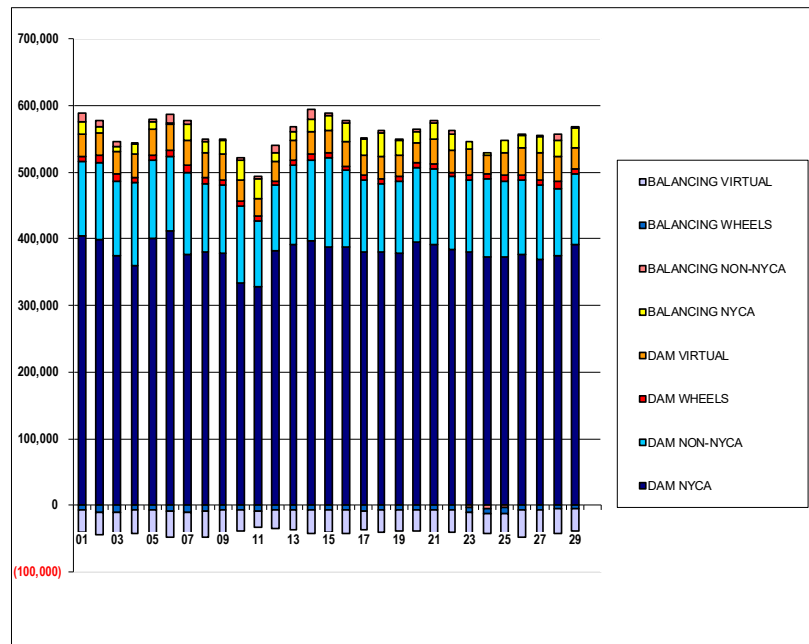
	MONDAY	TUESDAY	WEDNESDAY	THURSDAY	FRIDAY	SATURDAY	SUNDAY
ENERGY				1	2	3	4
TRANSMISSION SERVICE				(\$111.39)	\$4,555.96	\$12.11	(\$51.13)
UPLIFT				(\$1.53)	\$252.54	(\$0.01)	(\$1.43)
RESIDUALS				(\$0.01)	\$0.00	\$0.01	\$0.01
ANCILLARY SERVICES				(\$22.14)	(\$4,635.85)	\$42.29	\$3.80
TCC				(\$1.88)	\$256.17	(\$6.81)	(\$1.79)
	5	6	7	8	9	10	11
ENERGY	(\$4.16)	\$598.32	\$44.45	(\$4.05)	\$7,240.90	\$18,131.76	(\$5,508.83)
TRANSMISSION SERVICE	\$0.00	\$31.68	\$1.44	(\$6.01)	\$565.17	\$1,335.77	(\$276.52)
UPLIFT	\$0.00	\$0.00	\$0.00	\$0.01	\$0.00	\$0.00	\$0.01
RESIDUALS	\$4.13	(\$598.04)	(\$44.72)	\$4.01	(\$2,707.16)	\$57.15	\$260.31
ANCILLARY SERVICES	\$0.00	\$31.73	\$1.45	(\$6.02)	\$666.07	\$1,670.04	(\$347.06)
TCC	\$0.00	\$0.00	\$0.00	\$0.00	\$0.00	\$0.00	\$0.00
	12	13	14	15	16	17	18
ENERGY	(\$7,928.07)	\$315.99	(\$63.45)	(\$76.23)	\$3,320.10	\$0.00	\$0.00
TRANSMISSION SERVICE	(\$363.48)	\$6.96	\$1.26	(\$3.93)	\$140.86	\$0.00	\$0.00
UPLIFT	\$0.01	(\$0.01)	(\$0.01)	\$0.00	\$0.00	\$0.00	\$0.00
RESIDUALS	\$253.80	(\$65.73)	(\$12.42)	\$10.84	(\$2,408.49)	\$0.00	\$0.00
ANCILLARY SERVICES	(\$456.84)	(\$6.59)	(\$4.77)	(\$0.95)	\$140.86	\$0.00	\$0.00
TCC	\$0.00	\$0.00	\$0.00	\$0.00	\$0.00	\$0.00	\$0.00
	19	20	21	22	23	24	25
ENERGY	\$0.00	\$0.00	\$6,412.28	\$147.27	\$3,751.72	\$0.00	\$0.00
TRANSMISSION SERVICE	\$0.00	\$0.00	\$391.56	\$25.32	\$272.89	\$0.00	\$0.00
UPLIFT	\$0.00	\$0.00	\$0.01	\$0.37	\$0.00	\$0.00	\$0.00
RESIDUALS	\$0.00	\$0.00	\$375.71	\$521.06	(\$2,655.17)	\$0.00	\$0.00
ANCILLARY SERVICES	\$0.00	\$0.00	\$489.72	\$31.66	\$289.66	\$0.00	\$0.00
TCC	\$0.00	\$0.00	\$0.00	\$0.00	\$0.00	\$0.00	\$0.00
	26	27	28	29			
ENERGY	\$0.00	\$0.00	\$0.00	\$0.00			
TRANSMISSION SERVICE	\$0.00	\$0.00	\$0.00	\$0.00			
UPLIFT	\$0.00	\$0.00	\$0.00	\$0.00			
RESIDUALS	\$0.00	\$0.00	\$0.00	\$0.00			
ANCILLARY SERVICES	\$0.00	\$0.00	\$0.00	\$0.00			
TCC	\$0.00	\$0.00	\$0.00	\$0.00			



SETTLEMENTS REPORT  
February 2024 Settlement Adjustment  
March 7, 2024

**Weekly Settlement – Market Supply Analysis**

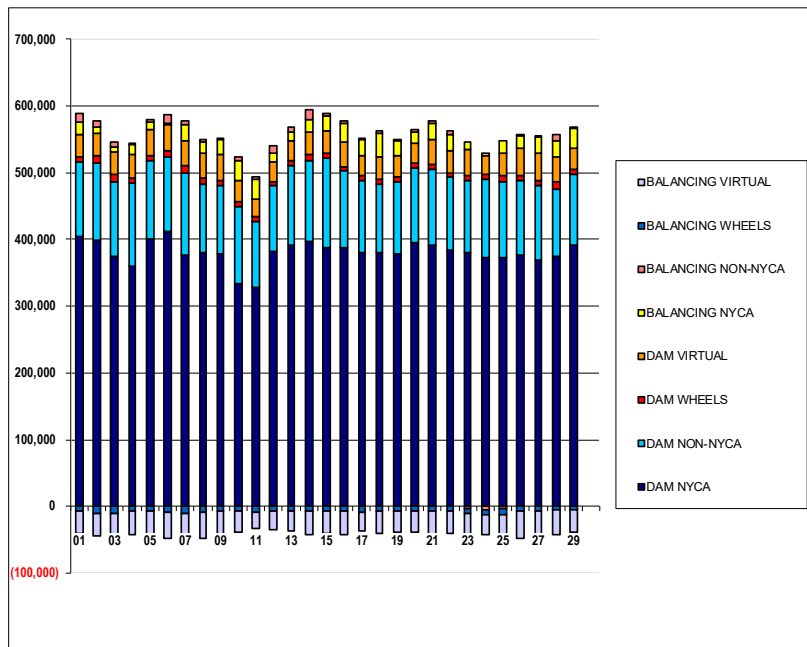
	MONDAY	TUESDAY	WEDNESDAY	THURSDAY	FRIDAY	SATURDAY	SUNDAY
DAM NYCA				1	2	3	4
DAM NON-NYCA				403,808	399,750	374,700	360,372
DAM WHEELS				113,281	115,298	112,605	123,782
DAM VIRTUAL				7,351	10,667	10,386	7,338
BALANCING NYCA				33,809	33,048	33,184	36,233
BALANCING NON-NYCA				17,892	9,256	8,501	13,890
BALANCING WHEELS				12,405	9,326	7,707	1,432
BALANCING VIRTUAL				(7,351)	(10,667)	(10,032)	(7,109)
				(33,809)	(33,048)	(33,184)	(36,233)
	5	6	7	8	9	10	11
DAM NYCA	401,065	412,546	376,966	380,682	379,016	334,478	329,000
DAM NON-NYCA	117,794	111,301	122,595	102,448	101,473	113,976	97,252
DAM WHEELS	7,185	9,405	11,010	9,346	7,491	7,740	8,382
DAM VIRTUAL	37,944	38,570	38,201	37,839	40,076	32,241	25,615
BALANCING NYCA	11,633	1,710	23,641	15,869	20,710	29,371	29,789
BALANCING NON-NYCA	4,032	12,810	5,133	3,441	280	4,995	4,817
BALANCING WHEELS	(6,948)	(8,861)	(10,593)	(9,346)	(7,491)	(6,305)	(8,182)
BALANCING VIRTUAL	(37,944)	(38,570)	(38,201)	(37,839)	(40,076)	(32,241)	(25,615)
	12	13	14	15	16	17	18
DAM NYCA	381,999	391,386	396,411	388,536	387,152	379,668	381,093
DAM NON-NYCA	98,424	120,002	122,511	133,604	115,899	108,058	102,496
DAM WHEELS	7,032	7,411	7,795	7,227	6,618	8,841	6,652
DAM VIRTUAL	28,368	29,903	35,348	34,165	35,848	28,625	33,183
BALANCING NYCA	13,078	12,345	18,591	22,697	29,040	24,703	36,643
BALANCING NON-NYCA	11,143	8,095	13,447	2,311	3,303	1,292	3,525
BALANCING WHEELS	(7,007)	(7,086)	(7,795)	(7,227)	(6,518)	(8,841)	(6,575)
BALANCING VIRTUAL	(28,368)	(29,903)	(35,348)	(34,165)	(35,848)	(28,625)	(33,183)
	19	20	21	22	23	24	25
DAM NYCA	378,831	396,026	391,453	384,645	380,270	373,578	372,165
DAM NON-NYCA	107,477	110,324	113,942	109,016	107,724	116,110	114,968
DAM WHEELS	7,972	7,513	6,408	6,408	7,472	7,519	8,824
DAM VIRTUAL	31,051	30,945	38,545	33,298	38,722	28,720	32,989
BALANCING NYCA	23,147	16,193	22,993	24,292	12,014	4,317	19,177
BALANCING NON-NYCA	1,816	3,521	4,518	5,024	(3,164)	(5,728)	(3,172)
BALANCING WHEELS	(7,762)	(7,119)	(6,189)	(6,373)	(7,472)	(7,419)	(8,720)
BALANCING VIRTUAL	(31,051)	(30,945)	(38,545)	(33,298)	(38,722)	(28,720)	(32,989)
	26	27	28	29			
DAM NYCA	376,149	369,330	375,080	391,876			
DAM NON-NYCA	111,669	111,848	99,473	105,693			
DAM WHEELS	7,424	7,688	11,704	7,941			
DAM VIRTUAL	40,923	40,158	37,171	32,236			
BALANCING NYCA	18,452	25,001	24,750	28,465			
BALANCING NON-NYCA	1,656	165	9,935	2,285			
BALANCING WHEELS	(7,350)	(7,688)	(6,106)	(5,862)			
BALANCING VIRTUAL	(40,923)	(40,158)	(37,171)	(32,236)			



SETTLEMENTS REPORT  
February 2024 Settlement Adjustment  
March 7, 2024

**Initial Settlement Adjustment – Market Supply Analysis**

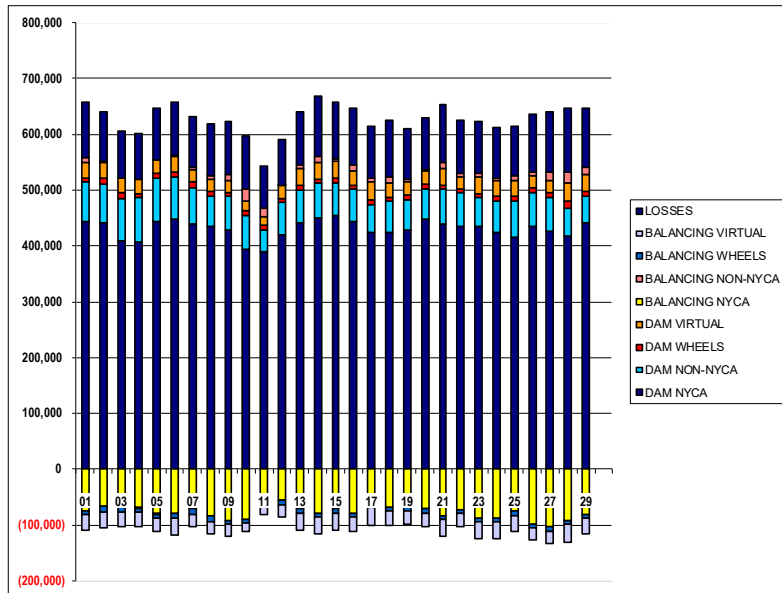
	MONDAY	TUESDAY	WEDNESDAY	THURSDAY	FRIDAY	SATURDAY	SUNDAY
				1	2	3	4
DAM NYCA				403,808	399,750	374,700	360,372
DAM NON-NYCA				113,281	115,298	112,605	123,782
DAM WHEELS				7,351	10,667	10,386	7,338
DAM VIRTUAL				33,809	33,048	33,184	36,233
BALANCING NYCA				17,891	9,265	8,503	13,889
BALANCING NON-NYCA				12,405	9,326	7,707	1,432
BALANCING WHEELS				(7,351)	(10,667)	(10,032)	(7,109)
BALANCING VIRTUAL				(33,809)	(33,048)	(33,184)	(36,233)
	5	6	7	8	9	10	11
DAM NYCA	401,065	412,546	376,966	380,682	379,016	334,478	329,000
DAM NON-NYCA	117,794	111,301	122,695	102,448	101,473	113,976	97,252
DAM WHEELS	7,185	9,405	11,010	9,346	7,491	7,740	8,382
DAM VIRTUAL	37,944	38,570	38,201	37,839	40,076	32,241	25,615
BALANCING NYCA	11,633	1,710	23,641	15,869	20,988	30,297	29,594
BALANCING NON-NYCA	4,032	12,810	5,133	3,441	280	4,995	4,817
BALANCING WHEELS	(6,948)	(8,861)	(10,593)	(9,346)	(7,491)	(6,305)	(8,182)
BALANCING VIRTUAL	(37,944)	(38,570)	(38,201)	(37,839)	(40,076)	(32,241)	(25,615)
	12	13	14	15	16	17	18
DAM NYCA	381,999	391,386	396,411	388,536	387,152	379,668	381,093
DAM NON-NYCA	98,424	120,002	122,511	133,604	115,899	108,058	102,496
DAM WHEELS	7,032	7,411	7,795	7,227	6,618	8,841	6,652
DAM VIRTUAL	28,368	29,903	35,348	34,165	35,848	28,625	33,183
BALANCING NYCA	12,820	12,348	18,593	22,694	29,061	24,703	36,643
BALANCING NON-NYCA	11,143	8,095	13,447	2,311	3,303	1,292	3,525
BALANCING WHEELS	(7,007)	(7,086)	(7,795)	(7,227)	(6,518)	(8,841)	(6,575)
BALANCING VIRTUAL	(28,368)	(29,903)	(35,348)	(34,165)	(35,848)	(28,625)	(33,183)
	19	20	21	22	23	24	25
DAM NYCA	378,831	396,026	391,453	384,645	380,270	373,578	372,165
DAM NON-NYCA	107,477	110,324	113,942	109,016	107,724	116,110	114,968
DAM WHEELS	7,972	7,513	6,408	6,408	7,472	7,519	8,824
DAM VIRTUAL	31,051	30,945	38,545	33,298	38,722	28,720	32,989
BALANCING NYCA	23,147	16,193	23,276	24,319	12,069	4,317	19,177
BALANCING NON-NYCA	1,816	3,521	4,518	5,024	(3,164)	(5,728)	(3,172)
BALANCING WHEELS	(7,762)	(7,119)	(6,189)	(6,373)	(7,472)	(7,419)	(8,720)
BALANCING VIRTUAL	(31,051)	(30,945)	(38,545)	(33,298)	(38,722)	(28,720)	(32,989)
	26	27	28	29			
DAM NYCA	376,149	369,330	375,080	391,876			
DAM NON-NYCA	111,669	111,848	99,473	105,693			
DAM WHEELS	7,424	7,688	11,704	7,941			
DAM VIRTUAL	40,923	40,158	37,171	32,236			
BALANCING NYCA	18,452	25,001	24,750	28,465			
BALANCING NON-NYCA	1,656	165	9,935	2,285			
BALANCING WHEELS	(7,350)	(7,688)	(6,106)	(5,862)			
BALANCING VIRTUAL	(40,923)	(40,158)	(37,171)	(32,236)			



SETTLEMENTS REPORT  
February 2024 Settlement Adjustment  
March 7, 2024

**Weekly Settlement – Market Withdrawals Analysis**

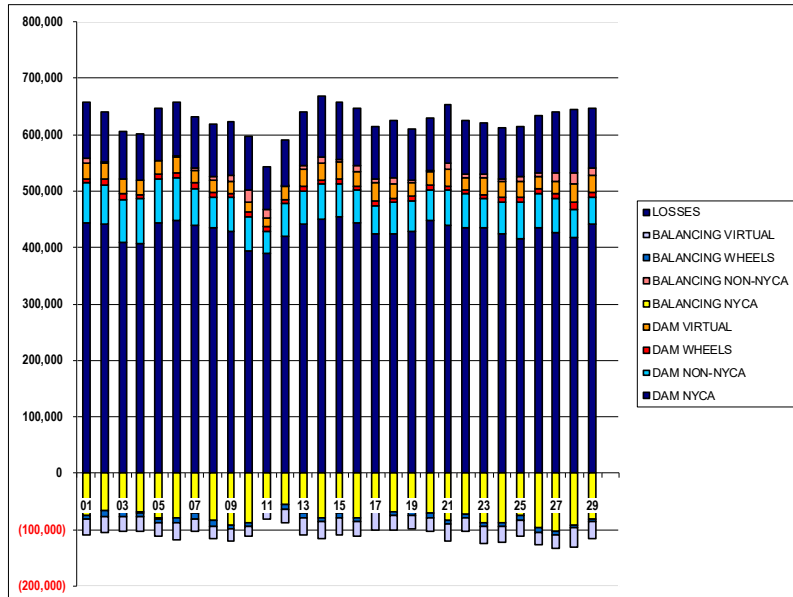
	MONDAY	TUESDAY	WEDNESDAY	THURSDAY	FRIDAY	SATURDAY	SUNDAY
				1	2	3	4
DAM NYCA				444,297	441,199	410,209	406,465
DAM NON-NYCA				69,703	70,374	75,613	79,768
DAM WHEELS				7,351	10,667	10,386	7,338
DAM VIRTUAL				27,922	28,184	26,109	25,006
BALANCING NYCA				(74,438)	(67,229)	(66,379)	(68,490)
BALANCING NON-NYCA				9,438	1,655	(427)	(2,279)
BALANCING WHEELS				(7,351)	(10,667)	(10,032)	(7,109)
BALANCING VIRTUAL				(27,922)	(28,184)	(26,109)	(25,006)
UFE/LOSSES				98,386	87,631	84,496	84,012
	5	6	7	8	9	10	11
DAM NYCA	443,577	448,287	438,362	435,533	428,085	394,159	390,713
DAM NON-NYCA	78,514	74,808	66,252	53,401	60,519	60,893	38,825
DAM WHEELS	7,185	9,405	11,010	9,346	7,491	7,740	8,382
DAM VIRTUAL	24,540	28,729	21,696	21,810	21,593	16,924	15,463
BALANCING NYCA	(79,624)	(80,158)	(70,255)	(84,671)	(92,185)	(89,369)	(57,554)
BALANCING NON-NYCA	(1,487)	1,097	2,602	4,718	11,059	21,819	14,175
BALANCING WHEELS	(6,946)	(8,861)	(10,593)	(9,346)	(7,491)	(6,305)	(8,152)
BALANCING VIRTUAL	(24,540)	(28,729)	(21,696)	(21,810)	(21,593)	(16,924)	(15,463)
UFE/LOSSES	93,544	94,333	91,375	93,458	94,001	95,318	74,698
	12	13	14	15	16	17	18
DAM NYCA	420,264	441,520	449,626	453,755	443,454	424,176	423,364
DAM NON-NYCA	57,085	58,761	62,786	59,480	58,599	50,121	56,952
DAM WHEELS	7,032	7,411	7,795	7,227	6,618	8,841	6,652
DAM VIRTUAL	23,714	30,495	30,352	31,099	26,528	32,262	25,637
BALANCING NYCA	(56,154)	(71,186)	(78,462)	(71,357)	(79,269)	(58,979)	(69,319)
BALANCING NON-NYCA	487	6,130	10,814	5,364	9,867	6,733	12,024
BALANCING WHEELS	(7,007)	(7,086)	(7,795)	(7,227)	(6,518)	(8,841)	(6,575)
BALANCING VIRTUAL	(23,714)	(30,495)	(30,352)	(31,099)	(26,528)	(32,262)	(25,637)
UFE/LOSSES	82,963	96,602	106,196	99,906	102,744	91,671	100,736
	19	20	21	22	23	24	25
DAM NYCA	427,960	447,051	439,665	436,039	434,966	423,790	415,286
DAM NON-NYCA	55,172	55,376	62,956	58,641	51,561	56,835	65,624
DAM WHEELS	7,972	7,513	6,408	6,408	7,472	7,519	8,824
DAM VIRTUAL	24,812	25,251	30,356	22,692	30,248	28,597	28,085
BALANCING NYCA	(66,165)	(71,691)	(83,890)	(73,739)	(87,504)	(87,802)	(75,165)
BALANCING NON-NYCA	4,478	2,261	10,582	7,172	4,951	5,057	7,045
BALANCING WHEELS	(7,762)	(7,119)	(6,189)	(6,373)	(7,472)	(7,419)	(8,720)
BALANCING VIRTUAL	(24,812)	(25,251)	(30,356)	(22,692)	(30,248)	(28,597)	(28,085)
UFE/LOSSES	89,826	93,067	103,592	94,864	92,870	90,398	90,349
	26	27	28	29			
DAM NYCA	434,006	426,093	418,851	441,125			
DAM NON-NYCA	62,522	61,722	49,543	48,299			
DAM WHEELS	7,424	7,688	11,704	7,941			
DAM VIRTUAL	21,972	22,768	33,293	29,900			
BALANCING NYCA	(97,814)	(103,155)	(91,598)	(81,076)			
BALANCING NON-NYCA	7,140	14,668	19,305	14,024			
BALANCING WHEELS	(7,350)	(7,688)	(6,106)	(5,862)			
BALANCING VIRTUAL	(21,972)	(22,768)	(33,293)	(29,900)			
UFE/LOSSES	102,070	107,016	113,137	105,947			



SETTLEMENTS REPORT  
February 2024 Settlement Adjustment  
March 7, 2024

**Initial Settlement Adjustment – Market Withdrawals Analysis**

	MONDAY	TUESDAY	WEDNESDAY	THURSDAY	FRIDAY	SATURDAY	SUNDAY
				1	2	3	4
DAM NYCA				444,297	441,199	410,209	406,465
DAM NON-NYCA				69,703	70,374	75,613	79,768
DAM WHEELS				7,351	10,667	10,386	7,338
DAM VIRTUAL				27,922	28,184	26,109	25,006
BALANCING NYCA				(74,439)	(67,053)	(66,378)	(68,491)
BALANCING NON-NYCA				9,438	1,655	(427)	(2,279)
BALANCING WHEELS				(7,351)	(10,667)	(10,032)	(7,109)
BALANCING VIRTUAL				(27,922)	(28,184)	(26,109)	(25,006)
UFE/LOSSES				98,386	87,466	84,497	84,012
	5	6	7	8	9	10	11
DAM NYCA	443,577	448,287	438,362	435,533	428,085	394,159	390,713
DAM NON-NYCA	78,514	74,808	66,252	53,401	60,519	60,893	38,825
DAM WHEELS	7,185	9,405	11,010	9,346	7,491	7,740	8,382
DAM VIRTUAL	24,540	28,729	21,696	21,810	21,593	16,924	15,463
BALANCING NYCA	(79,624)	(80,136)	(70,254)	(84,675)	(91,792)	(88,441)	(57,746)
BALANCING NON-NYCA	(1,487)	1,097	2,602	4,718	11,059	21,819	14,175
BALANCING WHEELS	(6,948)	(8,861)	(10,593)	(9,346)	(7,491)	(6,305)	(8,182)
BALANCING VIRTUAL	(24,540)	(28,729)	(21,696)	(21,810)	(21,593)	(16,924)	(15,463)
UFE/LOSSES	93,544	94,311	91,374	93,462	93,887	95,317	74,695
	12	13	14	15	16	17	18
DAM NYCA	420,264	441,520	449,626	453,755	443,454	424,176	423,364
DAM NON-NYCA	57,085	58,761	62,786	59,480	58,599	50,121	56,952
DAM WHEELS	7,032	7,411	7,795	7,227	6,618	8,841	6,652
DAM VIRTUAL	23,714	30,495	30,352	31,099	26,528	32,262	25,637
BALANCING NYCA	(56,407)	(71,181)	(78,461)	(71,360)	(79,166)	(58,979)	(69,319)
BALANCING NON-NYCA	487	6,130	10,814	5,364	9,867	6,733	12,024
BALANCING WHEELS	(7,007)	(7,086)	(7,795)	(7,227)	(6,518)	(8,841)	(6,575)
BALANCING VIRTUAL	(23,714)	(30,495)	(30,352)	(31,099)	(26,528)	(32,262)	(25,637)
UFE/LOSSES	82,956	96,601	106,196	99,906	102,661	91,671	100,736
	19	20	21	22	23	24	25
DAM NYCA	427,960	447,051	439,665	436,039	434,966	423,790	415,286
DAM NON-NYCA	55,172	55,376	62,956	58,641	51,561	56,835	65,624
DAM WHEELS	7,972	7,513	6,408	6,408	7,472	7,519	8,824
DAM VIRTUAL	24,812	25,251	30,356	22,692	30,248	28,597	28,085
BALANCING NYCA	(66,165)	(71,691)	(83,618)	(73,722)	(87,314)	(87,570)	(74,932)
BALANCING NON-NYCA	4,478	2,261	10,582	7,172	4,951	5,057	7,045
BALANCING WHEELS	(7,762)	(7,119)	(6,189)	(6,373)	(7,472)	(7,419)	(8,720)
BALANCING VIRTUAL	(24,812)	(25,251)	(30,356)	(22,692)	(30,248)	(28,597)	(28,085)
UFE/LOSSES	89,826	93,067	103,603	94,873	92,734	90,165	90,116
	26	27	28	29			
DAM NYCA	434,006	426,093	418,851	441,125			
DAM NON-NYCA	62,522	61,722	49,543	48,299			
DAM WHEELS	7,424	7,688	11,704	7,941			
DAM VIRTUAL	21,972	22,768	33,293	29,900			
BALANCING NYCA	(97,571)	(102,912)	(91,339)	(80,824)			
BALANCING NON-NYCA	7,140	14,668	19,305	14,024			
BALANCING WHEELS	(7,350)	(7,688)	(6,106)	(5,862)			
BALANCING VIRTUAL	(21,972)	(22,768)	(33,293)	(29,900)			
UFE/LOSSES	101,828	106,773	112,976	105,935			

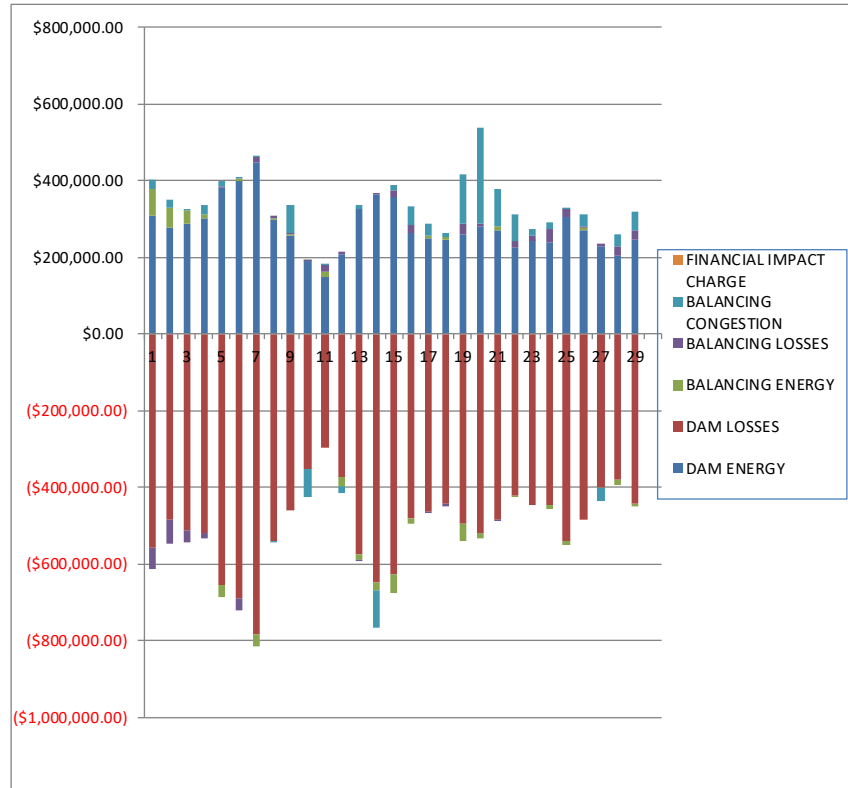




SETTLEMENTS REPORT  
February 2024 Settlement Adjustment  
March 7, 2024

**Weekly Settlement – Market Residuals Analysis**

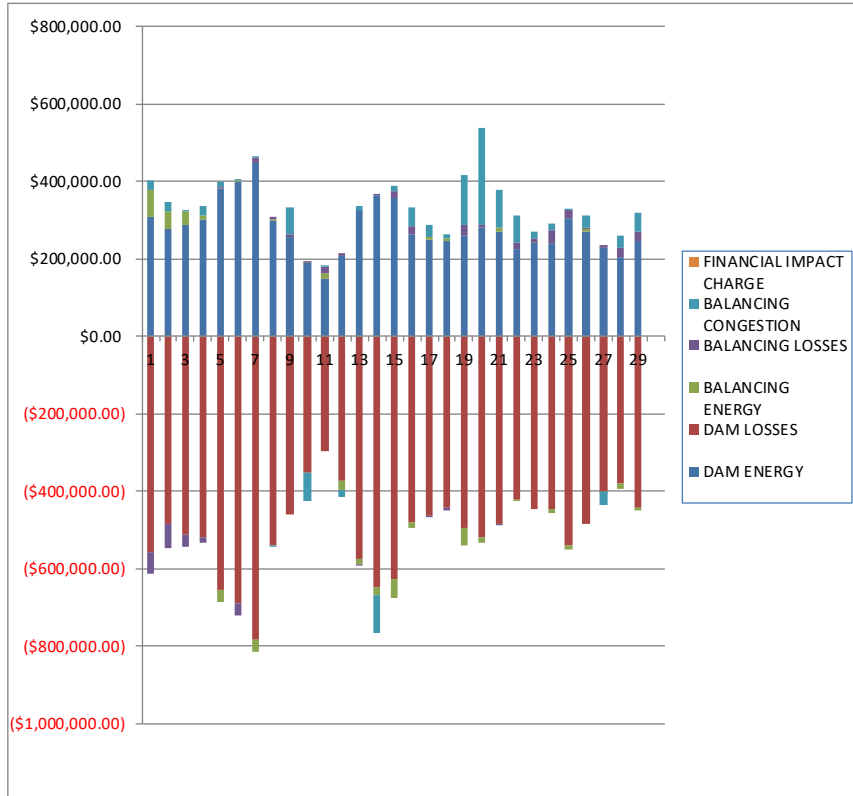
	MONDAY	TUESDAY	WEDNESDAY	THURSDAY	FRIDAY	SATURDAY	SUNDAY
				1	2	3	4
DAM ENERGY				\$309,421.48	\$276,883.70	\$288,554.03	\$300,375.30
DAM LOSSES				(\$557,567.69)	(\$484,025.53)	(\$513,929.80)	(\$520,508.21)
BALANCING ENERGY				\$68,878.78	\$50,591.15	\$32,541.56	\$12,008.15
BALANCING LOSSES				(\$54,425.92)	(\$61,622.30)	(\$31,206.17)	(\$12,382.79)
BALANCING CONGESTION				\$22,475.00	\$22,457.26	\$2,013.64	\$23,593.46
FINANCIAL IMPACT CHARGE				\$0.00	\$0.00	\$0.00	\$0.00
	5	6	7	8	9	10	11
DAM ENERGY	\$381,262.31	\$400,158.85	\$445,928.75	\$299,019.78	\$254,297.94	\$189,731.31	\$149,350.00
DAM LOSSES	(\$653,157.54)	(\$689,328.35)	(\$781,876.90)	(\$538,461.20)	(\$459,408.97)	(\$353,845.24)	(\$297,519.13)
BALANCING ENERGY	(\$32,565.27)	\$3,981.99	(\$32,334.60)	\$1,526.23	\$3,977.45	\$733.37	\$12,911.81
BALANCING LOSSES	\$2,475.86	(\$32,453.60)	\$13,925.39	\$7,723.92	\$5,945.17	\$3,820.79	\$16,220.52
BALANCING CONGESTION	\$14,226.85	\$256.54	\$4,103.39	(\$354.46)	\$72,085.12	(\$71,674.07)	\$3,979.10
FINANCIAL IMPACT CHARGE	\$0.00	\$0.00	\$0.00	\$0.00	\$0.00	\$0.00	\$0.00
	12	13	14	15	16	17	18
DAM ENERGY	\$206,644.74	\$325,222.64	\$364,407.45	\$357,767.36	\$263,645.87	\$248,549.65	\$245,018.33
DAM LOSSES	(\$373,398.43)	(\$574,720.46)	(\$647,849.96)	(\$625,826.65)	(\$481,938.79)	(\$465,256.51)	(\$443,179.77)
BALANCING ENERGY	(\$25,473.80)	(\$15,137.54)	(\$20,487.04)	(\$50,661.12)	(\$12,329.42)	\$8,825.89	\$8,006.64
BALANCING LOSSES	\$6,295.49	(\$3,601.25)	\$2,768.15	\$15,154.53	\$21,546.54	(\$665.38)	(\$6,435.59)
BALANCING CONGESTION	(\$14,967.79)	\$10,600.06	(\$98,409.79)	\$13,759.35	\$46,372.21	\$29,447.28	\$11,303.52
FINANCIAL IMPACT CHARGE	\$0.00	\$0.00	\$0.00	\$0.00	\$0.00	\$0.00	\$0.00
	19	20	21	22	23	24	25
DAM ENERGY	\$257,860.18	\$279,086.07	\$270,138.31	\$225,996.87	\$240,687.96	\$240,276.72	\$305,293.63
DAM LOSSES	(\$493,690.33)	(\$520,058.39)	(\$484,529.87)	(\$422,373.54)	(\$446,008.42)	(\$445,432.09)	(\$540,526.10)
BALANCING ENERGY	(\$46,212.39)	(\$11,438.98)	\$10,631.52	(\$867.78)	\$2,731.44	(\$10,833.69)	(\$10,129.46)
BALANCING LOSSES	\$27,788.90	\$8,336.62	(\$1,117.78)	\$16,350.78	\$11,271.53	\$33,001.62	\$21,549.19
BALANCING CONGESTION	\$131,330.38	\$249,049.35	\$96,628.05	\$69,139.61	\$18,792.59	\$17,113.40	\$1,938.20
FINANCIAL IMPACT CHARGE	\$0.00	\$0.00	\$0.00	\$0.00	\$0.00	\$0.00	\$0.00
	26	27	28	29			
DAM ENERGY	\$269,468.65	\$229,147.82	\$205,004.53	\$243,935.60			
DAM LOSSES	(\$482,927.24)	(\$399,446.73)	(\$380,687.87)	(\$441,667.37)			
BALANCING ENERGY	\$5,858.21	(\$897.76)	(\$15,013.83)	(\$6,477.51)			
BALANCING LOSSES	\$5,907.65	\$5,270.33	\$22,531.47	\$25,606.77			
BALANCING CONGESTION	\$29,118.27	(\$34,722.11)	\$31,324.77	\$47,361.71			
FINANCIAL IMPACT CHARGE	\$0.00	\$0.00	\$0.00	\$0.00			



SETTLEMENTS REPORT  
February 2024 Settlement Adjustment  
March 7, 2024

**Initial Settlement Adjustment – Market Residuals Analysis**

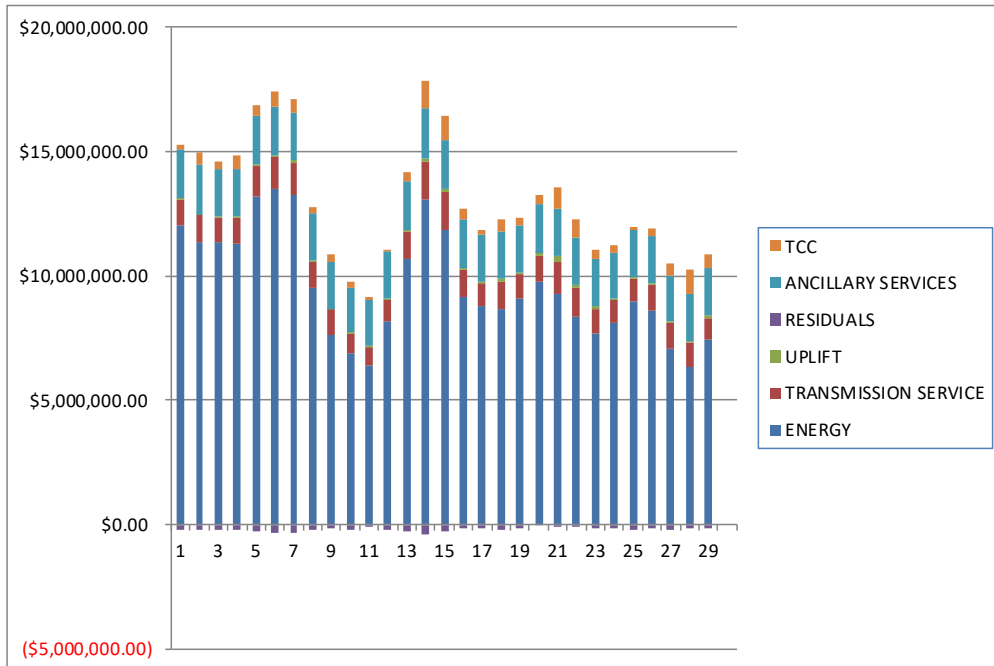
	MONDAY	TUESDAY	WEDNESDAY	THURSDAY	FRIDAY	SATURDAY	SUNDAY
				1	2	3	4
DAM ENERGY				\$309,421.48	\$276,883.71	\$288,554.03	\$300,375.30
DAM LOSSES				(\$557,567.70)	(\$484,025.53)	(\$513,929.79)	(\$520,508.21)
BALANCING ENERGY				\$68,858.63	\$45,883.14	\$32,589.04	\$12,011.48
BALANCING LOSSES				(\$54,427.85)	(\$61,775.02)	(\$31,211.37)	(\$12,382.31)
BALANCING CONGESTION				\$22,474.95	\$22,682.13	\$2,013.64	\$23,593.45
FINACIAL IMPACT CHARGE				\$0.00	\$0.00	\$0.00	\$0.00
	5	6	7	8	9	10	11
DAM ENERGY	\$381,262.31	\$400,158.86	\$445,928.74	\$299,019.77	\$254,297.95	\$189,731.32	\$149,350.01
DAM LOSSES	(\$653,157.54)	(\$689,328.35)	(\$781,876.90)	(\$538,461.19)	(\$459,408.97)	(\$353,845.23)	(\$297,519.13)
BALANCING ENERGY	(\$32,561.27)	\$3,423.85	(\$32,376.54)	\$1,529.56	\$1,731.32	\$636.20	\$12,914.78
BALANCING LOSSES	\$2,475.97	(\$32,493.60)	\$13,922.92	\$7,723.87	\$5,825.21	\$3,981.76	\$16,448.55
BALANCING CONGESTION	\$14,226.87	\$256.63	\$4,103.09	(\$353.73)	\$71,744.04	(\$71,680.74)	\$4,008.40
FINACIAL IMPACT CHARGE	\$0.00	\$0.00	\$0.00	\$0.00	\$0.00	\$0.00	\$0.00
	12	13	14	15	16	17	18
DAM ENERGY	\$206,644.73	\$325,222.64	\$364,407.45	\$357,767.36	\$263,645.88	\$248,549.65	\$245,018.33
DAM LOSSES	(\$373,398.43)	(\$574,720.47)	(\$647,849.96)	(\$625,826.64)	(\$481,938.79)	(\$465,256.51)	(\$443,179.77)
BALANCING ENERGY	(\$25,587.64)	(\$15,153.59)	(\$20,476.86)	(\$50,652.20)	(\$14,608.10)	\$8,825.89	\$8,006.64
BALANCING LOSSES	\$6,608.25	(\$3,613.11)	\$2,765.22	\$15,156.04	\$21,407.80	(\$665.38)	(\$6,435.59)
BALANCING CONGESTION	(\$14,912.90)	\$10,562.25	(\$98,429.46)	\$13,759.75	\$46,381.13	\$29,447.28	\$11,303.52
FINACIAL IMPACT CHARGE	\$0.00	\$0.00	\$0.00	\$0.00	\$0.00	\$0.00	\$0.00
	19	20	21	22	23	24	25
DAM ENERGY	\$257,860.18	\$279,086.07	\$270,138.31	\$225,996.88	\$240,687.97	\$240,276.72	\$305,293.63
DAM LOSSES	(\$493,690.33)	(\$520,058.39)	(\$484,529.87)	(\$422,373.53)	(\$446,008.42)	(\$445,432.09)	(\$540,526.10)
BALANCING ENERGY	(\$46,212.39)	(\$11,438.98)	\$10,868.42	(\$645.72)	\$152.57	(\$10,833.69)	(\$10,129.46)
BALANCING LOSSES	\$27,788.90	\$8,336.62	(\$1,008.37)	\$16,529.29	\$11,168.59	\$33,001.62	\$21,549.19
BALANCING CONGESTION	\$131,330.38	\$249,049.35	\$96,657.45	\$69,260.08	\$18,819.22	\$17,113.40	\$1,938.20
FINACIAL IMPACT CHARGE	\$0.00	\$0.00	\$0.00	\$0.00	\$0.00	\$0.00	\$0.00
	26	27	28	29			
DAM ENERGY	\$269,468.65	\$229,147.82	\$205,004.53	\$243,935.60			
DAM LOSSES	(\$482,927.24)	(\$399,446.73)	(\$380,687.87)	(\$441,667.37)			
BALANCING ENERGY	\$5,858.21	(\$897.76)	(\$15,013.83)	(\$6,477.51)			
BALANCING LOSSES	\$5,907.65	\$5,270.33	\$22,531.47	\$25,606.77			
BALANCING CONGESTION	\$29,118.27	(\$34,722.11)	\$31,324.77	\$47,361.71			
FINACIAL IMPACT CHARGE	\$0.00	\$0.00	\$0.00	\$0.00			



**SETTLEMENTS REPORT**  
**February 2024 Settlement Adjustment**  
**March 7, 2024**

**Weekly Settlement – Market Costs Analysis**

	MONDAY	TUESDAY	WEDNESDAY	THURSDAY	FRIDAY	SATURDAY	SUNDAY
				1	2	3	4
ENERGY				\$12,025,691.80	\$11,356,025.04	\$11,354,843.86	\$11,309,845.31
TRANSMISSION SERVICE				\$1,017,495.25	\$1,101,245.87	\$993,511.85	\$1,040,397.23
UPLIFT				\$64,855.21	\$29,175.78	\$23,012.94	\$52,893.46
RESIDUALS				(\$211,218.35)	(\$195,715.72)	(\$222,026.74)	(\$196,914.09)
ANCILLARY SERVICES				\$1,997,222.40	\$1,974,977.41	\$1,931,339.19	\$1,902,862.76
TCC				\$171,232.28	\$476,634.64	\$297,774.03	\$559,186.38
	5	6	7	8	9	10	11
ENERGY	\$13,222,675.46	\$13,516,176.03	\$13,262,095.19	\$9,535,172.81	\$7,638,993.20	\$6,874,001.32	\$6,387,786.52
TRANSMISSION SERVICE	\$1,164,176.23	\$1,244,607.67	\$1,292,813.79	\$1,023,785.18	\$1,003,974.09	\$813,042.88	\$759,918.58
UPLIFT	\$95,698.24	\$100,209.36	\$78,976.69	\$43,464.53	\$50,019.41	\$31,796.67	\$49,110.35
RESIDUALS	(\$287,757.79)	(\$317,384.57)	(\$350,253.97)	(\$230,545.73)	(\$123,103.29)	(\$231,233.84)	(\$115,057.70)
ANCILLARY SERVICES	\$1,941,302.77	\$1,964,636.24	\$1,933,946.97	\$1,891,999.73	\$1,870,427.12	\$1,830,703.37	\$1,841,751.59
TCC	\$461,778.97	\$591,255.85	\$529,346.84	\$267,051.04	\$300,627.48	\$199,751.13	\$112,140.14
	12	13	14	15	16	17	18
ENERGY	\$8,201,566.83	\$10,686,502.27	\$13,085,243.09	\$11,866,905.16	\$9,180,836.98	\$8,770,860.72	\$8,683,498.80
TRANSMISSION SERVICE	\$845,508.98	\$1,113,106.42	\$1,523,923.88	\$1,489,057.81	\$1,089,177.76	\$933,970.57	\$1,068,060.47
UPLIFT	\$65,259.42	\$54,174.80	\$128,669.79	\$159,385.85	\$70,391.47	\$47,612.56	\$123,234.74
RESIDUALS	(\$200,899.79)	(\$257,636.55)	(\$399,571.19)	(\$289,806.53)	(\$162,703.59)	(\$179,099.07)	(\$185,286.87)
ANCILLARY SERVICES	\$1,895,581.89	\$1,938,244.31	\$1,987,774.37	\$1,962,768.66	\$1,926,880.89	\$1,934,110.47	\$1,890,510.50
TCC	\$48,266.56	\$377,014.26	\$1,095,171.23	\$976,707.22	\$411,496.02	\$180,005.01	\$486,033.65
	19	20	21	22	23	24	25
ENERGY	\$9,091,375.76	\$9,778,005.41	\$9,298,527.92	\$8,373,848.68	\$7,697,336.08	\$8,113,957.38	\$8,941,309.60
TRANSMISSION SERVICE	\$970,266.71	\$1,033,968.13	\$1,233,909.70	\$1,131,043.24	\$983,021.13	\$914,928.08	\$960,320.62
UPLIFT	\$100,781.76	\$128,581.54	\$265,213.93	\$116,436.76	\$112,864.40	\$36,971.59	\$24,772.83
RESIDUALS	(\$122,923.26)	\$4,974.67	(\$108,249.77)	(\$111,754.06)	(\$172,524.90)	(\$165,874.04)	(\$221,874.54)
ANCILLARY SERVICES	\$1,888,760.28	\$1,924,504.67	\$1,897,514.33	\$1,895,705.62	\$1,862,755.69	\$1,887,772.26	\$1,906,113.05
TCC	\$283,823.38	\$361,022.58	\$849,255.74	\$738,814.80	\$371,909.10	\$257,619.85	\$161,140.95
	26	27	28	29			
ENERGY	\$8,591,669.36	\$7,070,766.90	\$6,331,689.37	\$7,428,647.57			
TRANSMISSION SERVICE	\$1,027,795.84	\$1,046,177.52	\$997,499.79	\$895,776.60			
UPLIFT	\$76,556.03	\$35,126.17	\$73,757.38	\$122,738.38			
RESIDUALS	(\$172,574.46)	(\$200,648.45)	(\$136,840.93)	(\$131,240.80)			
ANCILLARY SERVICES	\$1,881,445.18	\$1,866,272.94	\$1,844,882.85	\$1,892,378.55			
TCC	\$359,166.17	\$483,582.01	\$995,998.69	\$533,887.06			



**SETTLEMENTS REPORT**  
**February 2024 Settlement Adjustment**  
**March 7, 2024**

**Initial Settlement Adjustment – Market Costs Analysis**

	MONDAY	TUESDAY	WEDNESDAY	THURSDAY	FRIDAY	SATURDAY	SUNDAY
				1	2	3	4
ENERGY				\$12,025,580.41	\$11,360,581.00	\$11,354,855.97	\$11,309,794.18
TRANSMISSION SERVICE				\$1,017,493.72	\$1,101,498.41	\$993,511.84	\$1,040,395.80
UPLIFT				\$64,855.20	\$29,175.78	\$23,012.95	\$52,893.47
RESIDUALS				(\$211,240.49)	(\$200,351.57)	(\$221,984.45)	(\$196,910.29)
ANCILLARY SERVICES				\$1,997,220.52	\$1,975,233.58	\$1,931,332.38	\$1,902,860.97
TCC				\$171,232.28	\$476,634.64	\$297,774.03	\$559,186.38
	5	6	7	8	9	10	11
ENERGY	\$13,222,671.30	\$13,516,774.35	\$13,262,139.64	\$9,535,168.76	\$7,646,234.10	\$6,892,133.08	\$6,382,277.69
TRANSMISSION SERVICE	\$1,164,176.23	\$1,244,639.35	\$1,292,815.23	\$1,023,779.17	\$1,004,539.26	\$814,378.65	\$759,642.06
UPLIFT	\$95,698.24	\$100,209.36	\$78,976.69	\$43,464.54	\$50,019.41	\$31,796.67	\$49,110.36
RESIDUALS	(\$287,753.66)	(\$317,982.61)	(\$350,298.69)	(\$230,541.72)	(\$125,810.45)	(\$231,176.69)	(\$114,797.39)
ANCILLARY SERVICES	\$1,941,302.77	\$1,964,667.97	\$1,933,948.42	\$1,891,993.71	\$1,871,093.19	\$1,832,373.41	\$1,841,404.53
TCC	\$461,778.97	\$591,255.85	\$529,346.84	\$267,051.04	\$300,627.48	\$199,751.13	\$112,140.14
	12	13	14	15	16	17	18
ENERGY	\$8,193,638.76	\$10,686,818.26	\$13,085,179.64	\$11,866,828.93	\$9,184,157.08	\$8,770,860.72	\$8,683,498.80
TRANSMISSION SERVICE	\$845,145.50	\$1,113,113.38	\$1,523,925.14	\$1,489,053.88	\$1,089,318.62	\$933,970.57	\$1,068,060.47
UPLIFT	\$65,259.43	\$54,174.79	\$128,669.78	\$159,385.85	\$70,391.47	\$47,612.56	\$123,234.74
RESIDUALS	(\$200,645.99)	(\$257,702.28)	(\$399,583.61)	(\$289,795.69)	(\$165,112.08)	(\$179,099.07)	(\$185,286.87)
ANCILLARY SERVICES	\$1,895,125.05	\$1,938,237.72	\$1,987,769.60	\$1,962,767.71	\$1,927,021.75	\$1,934,110.47	\$1,890,510.50
TCC	\$48,266.56	\$377,014.26	\$1,095,171.23	\$976,707.22	\$411,496.02	\$180,005.01	\$486,033.65
	19	20	21	22	23	24	25
ENERGY	\$9,091,375.76	\$9,778,005.41	\$9,304,940.20	\$8,373,995.95	\$7,701,087.80	\$8,113,957.38	\$8,941,309.60
TRANSMISSION SERVICE	\$970,266.71	\$1,033,968.13	\$1,234,301.26	\$1,131,068.56	\$983,294.02	\$914,928.08	\$960,320.62
UPLIFT	\$100,781.76	\$128,581.54	\$265,213.94	\$116,437.13	\$112,864.40	\$36,971.59	\$24,772.83
RESIDUALS	(\$122,923.26)	\$4,974.67	(\$107,874.06)	(\$111,233.00)	(\$175,180.07)	(\$165,874.04)	(\$221,874.54)
ANCILLARY SERVICES	\$1,888,760.28	\$1,924,504.67	\$1,898,004.05	\$1,895,737.28	\$1,863,045.35	\$1,887,772.26	\$1,906,113.05
TCC	\$283,823.38	\$361,022.58	\$849,255.74	\$738,814.80	\$371,909.10	\$257,619.85	\$161,140.95
	26	27	28	29			
ENERGY	\$8,591,669.36	\$7,070,766.90	\$6,331,689.37	\$7,428,647.57			
TRANSMISSION SERVICE	\$1,027,795.84	\$1,046,177.52	\$997,499.79	\$895,776.60			
UPLIFT	\$76,556.03	\$35,126.17	\$73,757.38	\$122,738.38			
RESIDUALS	(\$172,574.46)	(\$200,648.45)	(\$136,840.93)	(\$131,240.80)			
ANCILLARY SERVICES	\$1,881,445.18	\$1,866,272.94	\$1,844,882.85	\$1,892,378.55			
TCC	\$359,166.17	\$483,582.01	\$995,998.69	\$533,887.06			

