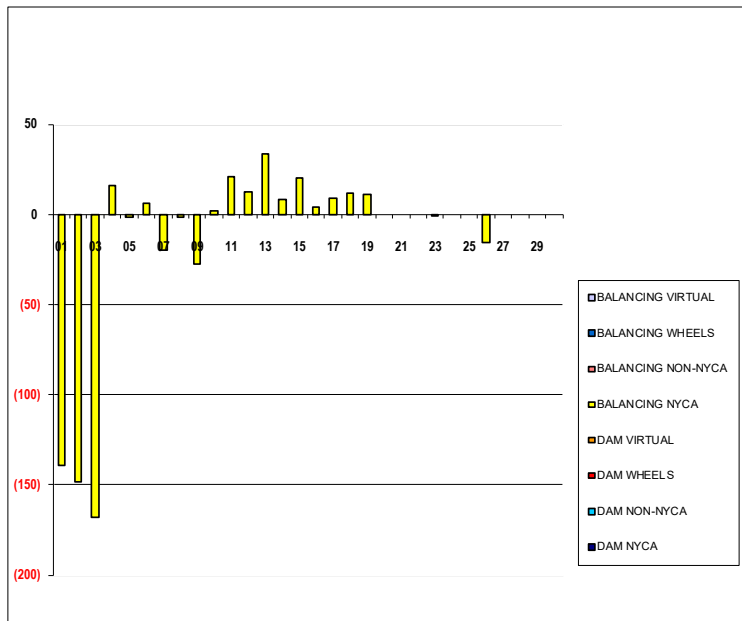


SETTLEMENTS REPORT
 April 2024 Settlement Adjustment
 May 7, 2024

Initial – Market Supply Delta Analysis

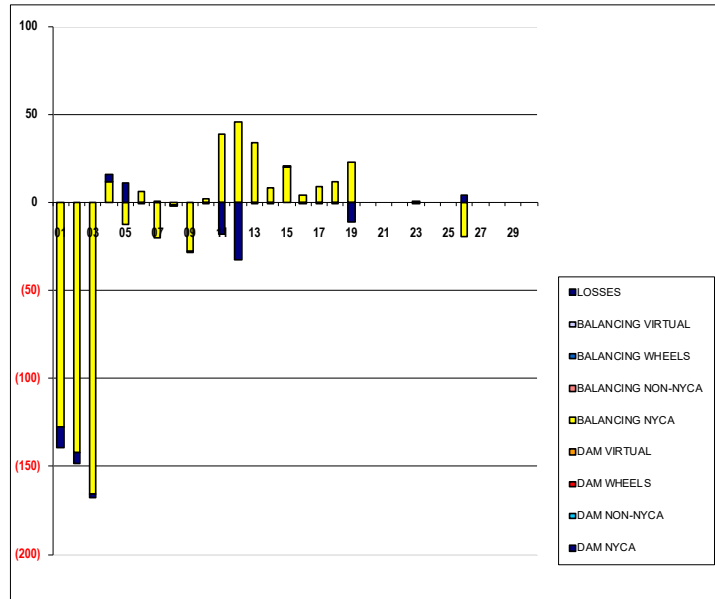
	MONDAY	TUESDAY	WEDNESDAY	THURSDAY	FRIDAY	SATURDAY	SUNDAY
	1	2	3	4	5	6	7
DAM NYCA	0	0	0	0	0	0	0
DAM NON-NYCA	0	0	0	0	0	0	0
DAM WHEELS	0	0	0	0	0	0	0
DAM VIRTUAL	0	0	0	0	0	0	0
BALANCING NYCA	(139)	(148)	(168)	16	(2)	6	(20)
BALANCING NON-NYCA	0	0	0	0	0	0	0
BALANCING WHEELS	0	0	0	0	0	0	0
BALANCING VIRTUAL	0	0	0	0	0	0	0
	8	9	10	11	12	13	14
DAM NYCA	0	0	0	0	0	0	0
DAM NON-NYCA	0	0	0	0	0	0	0
DAM WHEELS	0	0	0	0	0	0	0
DAM VIRTUAL	0	0	0	0	0	0	0
BALANCING NYCA	(2)	(28)	2	21	13	34	8
BALANCING NON-NYCA	0	0	0	0	0	0	0
BALANCING WHEELS	0	0	0	0	0	0	0
BALANCING VIRTUAL	0	0	0	0	0	0	0
	15	16	17	18	19	20	21
DAM NYCA	0	0	0	0	0	0	0
DAM NON-NYCA	0	0	0	0	0	0	0
DAM WHEELS	0	0	0	0	0	0	0
DAM VIRTUAL	0	0	0	0	0	0	0
BALANCING NYCA	20	4	9	12	11	0	0
BALANCING NON-NYCA	0	0	0	0	0	0	0
BALANCING WHEELS	0	0	0	0	0	0	0
BALANCING VIRTUAL	0	0	0	0	0	0	0
	22	23	24	25	26	27	28
DAM NYCA	0	0	0	0	0	0	0
DAM NON-NYCA	0	0	0	0	0	0	0
DAM WHEELS	0	0	0	0	0	0	0
DAM VIRTUAL	0	0	0	0	0	0	0
BALANCING NYCA	0	(0)	0	0	(15)	0	0
BALANCING NON-NYCA	0	0	0	0	0	0	0
BALANCING WHEELS	0	0	0	0	0	0	0
BALANCING VIRTUAL	0	0	0	0	0	0	0
	29	30					
DAM NYCA	0	0					
DAM NON-NYCA	0	0					
DAM WHEELS	0	0					
DAM VIRTUAL	0	0					
BALANCING NYCA	0	0					
BALANCING NON-NYCA	0	0					
BALANCING WHEELS	0	0					
BALANCING VIRTUAL	0	0					



SETTLEMENTS REPORT
 April 2024 Settlement Adjustment
 May 7, 2024

Initial – Market Withdrawals Delta Analysis

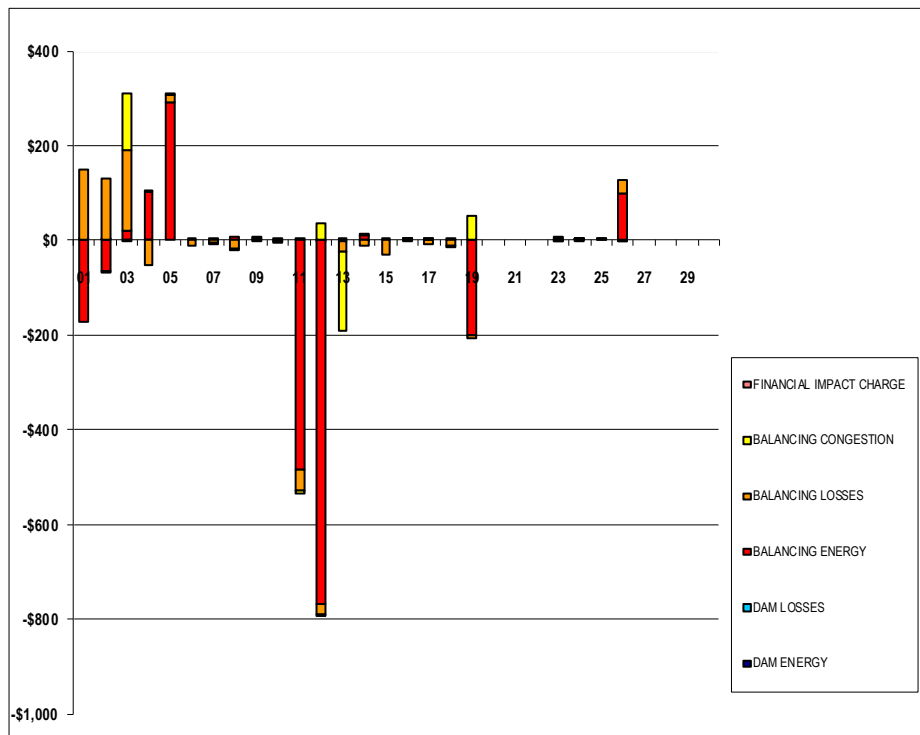
	MONDAY	TUESDAY	WEDNESDAY	THURSDAY	FRIDAY	SATURDAY	SUNDAY
	1	2	3	4	5	6	7
DAM NYCA	0	0	0	0	0	0	0
DAM NON-NYCA	0	0	0	0	0	0	0
DAM WHEELS	0	0	0	0	0	0	0
DAM VIRTUAL	0	0	0	0	0	0	0
BALANCING NYCA	(128)	(142)	(165)	12	(13)	6	(20)
BALANCING NON-NYCA	0	0	0	0	0	0	0
BALANCING WHEELS	0	0	0	0	0	0	0
BALANCING VIRTUAL	0	0	0	0	0	0	0
UFE/LOSSES	(12)	(6)	(3)	4	11	(0)	0
	8	9	10	11	12	13	14
DAM NYCA	0	0	0	0	0	0	0
DAM NON-NYCA	0	0	0	0	0	0	0
DAM WHEELS	0	0	0	0	0	0	0
DAM VIRTUAL	0	0	0	0	0	0	0
BALANCING NYCA	(2)	(28)	2	39	45	34	8
BALANCING NON-NYCA	0	0	0	0	0	0	0
BALANCING WHEELS	0	0	0	0	0	0	0
BALANCING VIRTUAL	0	0	0	0	0	0	0
UFE/LOSSES	(0)	(0)	(0)	(18)	(33)	(0)	(0)
	15	16	17	18	19	20	21
DAM NYCA	0	0	0	0	0	0	0
DAM NON-NYCA	0	0	0	0	0	0	0
DAM WHEELS	0	0	0	0	0	0	0
DAM VIRTUAL	0	0	0	0	0	0	0
BALANCING NYCA	20	4	9	12	23	0	0
BALANCING NON-NYCA	0	0	0	0	0	0	0
BALANCING WHEELS	0	0	0	0	0	0	0
BALANCING VIRTUAL	0	0	0	0	0	0	0
UFE/LOSSES	0	(0)	(0)	(0)	(11)	0	0
	22	23	24	25	26	27	28
DAM NYCA	0	0	0	0	0	0	0
DAM NON-NYCA	0	0	0	0	0	0	0
DAM WHEELS	0	0	0	0	0	0	0
DAM VIRTUAL	0	0	0	0	0	0	0
BALANCING NYCA	0	(0)	0	0	(20)	0	0
BALANCING NON-NYCA	0	0	0	0	0	0	0
BALANCING WHEELS	0	0	0	0	0	0	0
BALANCING VIRTUAL	0	0	0	0	0	0	0
UFE/LOSSES	0	0	0	0	4	0	0
	29	30					
DAM NYCA	0	0					
DAM NON-NYCA	0	0					
DAM WHEELS	0	0					
DAM VIRTUAL	0	0					
BALANCING NYCA	0	0					
BALANCING NON-NYCA	0	0					
BALANCING WHEELS	0	0					
BALANCING VIRTUAL	0	0					
UFE/LOSSES	0	0					



SETTLEMENTS REPORT
 April 2024 Settlement Adjustment
 May 7, 2024

Initial – Market Residuals Delta Analysis

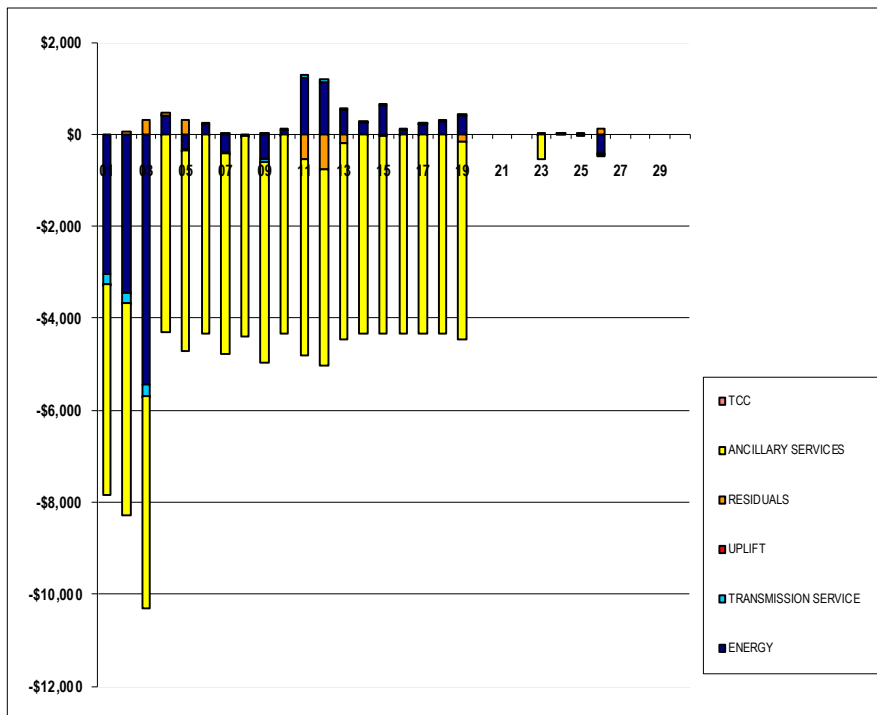
	MONDAY	TUESDAY	WEDNESDAY	THURSDAY	FRIDAY	SATURDAY	SUNDAY
	1	2	3	4	5	6	7
DAM ENERGY	\$0.00	\$0.00	\$0.00	\$0.00	\$0.00	\$0.00	\$0.00
DAM LOSSES	\$0.01	\$0.01	\$0.00	\$0.00	\$0.00	\$0.00	\$0.00
BALANCING ENERGY	(\$172.17)	(\$66.42)	\$19.18	\$101.52	\$290.33	\$0.13	\$1.63
BALANCING LOSSES	\$149.38	\$131.18	\$169.89	(\$52.61)	\$16.59	(\$10.35)	(\$5.38)
BALANCING CONGESTION	\$0.00	(\$0.14)	\$121.67	\$0.12	\$4.54	\$0.00	(\$0.01)
FINANCIAL IMPACT CHARGE	\$0.00	\$0.00	(\$0.01)	\$0.00	\$0.00	\$0.00	\$0.00
	8	9	10	11	12	13	14
DAM ENERGY	\$0.00	\$0.00	\$0.00	\$0.00	\$0.00	\$0.00	\$0.00
DAM LOSSES	\$0.00	(\$0.01)	\$0.01	\$0.01	(\$0.01)	\$0.01	(\$0.01)
BALANCING ENERGY	\$7.93	\$5.71	(\$1.10)	(\$485.98)	(\$769.23)	(\$1.40)	\$10.66
BALANCING LOSSES	(\$17.61)	\$1.70	(\$4.68)	(\$43.41)	(\$19.95)	(\$22.48)	(\$11.19)
BALANCING CONGESTION	(\$2.78)	\$0.00	\$0.00	(\$6.84)	\$35.62	(\$167.83)	\$0.16
FINANCIAL IMPACT CHARGE	\$0.00	\$0.00	\$0.00	\$0.00	(\$0.01)	\$0.00	\$0.00
	15	16	17	18	19	20	21
DAM ENERGY	\$0.00	\$0.01	\$0.00	\$0.00	\$0.00	\$0.00	\$0.00
DAM LOSSES	\$0.00	\$0.00	\$0.00	\$0.00	\$0.00	\$0.00	\$0.00
BALANCING ENERGY	\$0.44	\$1.60	\$0.05	\$0.08	(\$201.73)	\$0.00	\$0.00
BALANCING LOSSES	(\$30.23)	(\$3.56)	(\$8.27)	(\$10.29)	(\$4.01)	\$0.00	\$0.00
BALANCING CONGESTION	\$0.00	\$0.39	\$0.01	(\$1.53)	\$52.33	\$0.00	\$0.00
FINANCIAL IMPACT CHARGE	\$0.00	\$0.00	\$0.00	\$0.00	\$0.00	\$0.00	\$0.00
	22	23	24	25	26	27	28
DAM ENERGY	\$0.00	(\$0.01)	\$0.01	\$0.00	(\$0.01)	\$0.00	\$0.00
DAM LOSSES	\$0.00	\$0.00	(\$0.01)	\$0.00	(\$0.01)	\$0.00	\$0.00
BALANCING ENERGY	\$0.00	\$3.51	\$0.43	\$1.08	\$97.90	\$0.00	\$0.00
BALANCING LOSSES	\$0.00	\$0.22	\$0.15	\$0.06	\$28.67	\$0.00	\$0.00
BALANCING CONGESTION	\$0.00	(\$0.72)	\$0.01	\$0.00	\$0.00	\$0.00	\$0.00
FINANCIAL IMPACT CHARGE	\$0.00	\$0.00	\$0.00	\$0.00	\$0.00	\$0.00	\$0.00
	29	30					
DAM ENERGY	\$0.00	\$0.00					
DAM LOSSES	\$0.00	\$0.00					
BALANCING ENERGY	\$0.00	\$0.00					
BALANCING LOSSES	\$0.00	\$0.00					
BALANCING CONGESTION	\$0.00	\$0.00					
FINANCIAL IMPACT CHARGE	\$0.00	\$0.00					



SETTLEMENTS REPORT
 April 2024 Settlement Adjustment
 May 7, 2024

Initial – Market Costs Delta Analysis

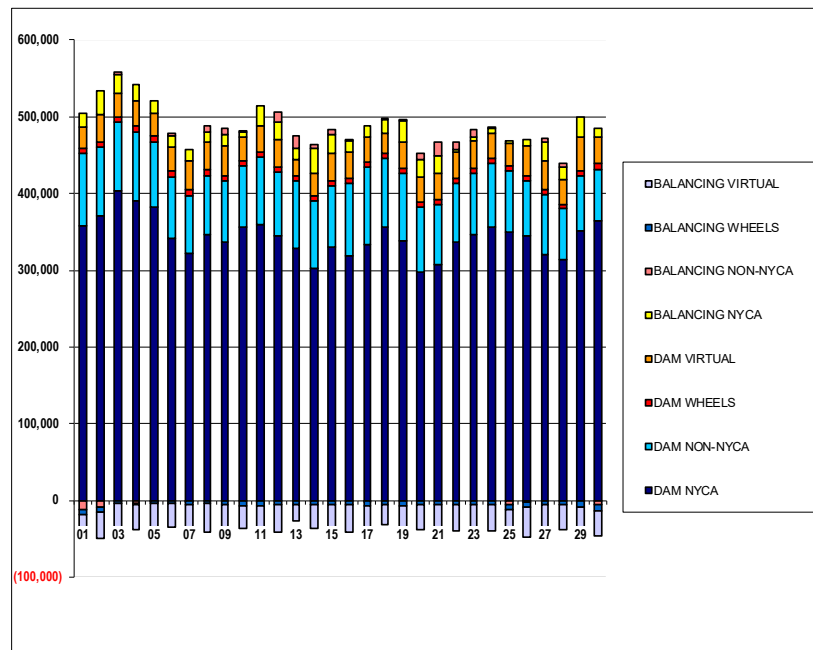
	MONDAY	TUESDAY	WEDNESDAY	THURSDAY	FRIDAY	SATURDAY	SUNDAY
	1	2	3	4	5	6	7
ENERGY	(\$3,049.96)	(\$3,461.06)	(\$5,429.20)	\$394.60	(\$330.01)	\$225.51	(\$381.39)
TRANSMISSION SERVICE	(\$196.48)	(\$219.37)	(\$254.74)	\$18.48	(\$19.45)	\$9.89	(\$30.73)
UPLIFT	(\$0.01)	(\$0.01)	(\$0.01)	(\$0.01)	(\$0.01)	\$0.00	\$0.01
RESIDUALS	(\$22.78)	\$64.63	\$310.73	\$49.03	\$311.46	(\$10.22)	(\$3.76)
ANCILLARY SERVICES	(\$4,575.79)	(\$4,596.21)	(\$4,637.52)	(\$4,316.79)	(\$4,357.16)	(\$4,326.77)	(\$4,374.30)
TCC	\$0.00	\$0.00	\$0.00	\$0.00	\$0.00	\$0.00	\$0.00
	8	9	10	11	12	13	14
ENERGY	(\$28.08)	(\$548.94)	\$72.76	\$1,230.46	\$1,123.92	\$517.76	\$234.37
TRANSMISSION SERVICE	(\$2.66)	(\$42.67)	\$2.80	\$59.79	\$69.86	\$52.12	\$12.23
UPLIFT	\$0.00	(\$0.03)	(\$0.01)	\$0.00	\$0.00	\$0.00	\$0.01
RESIDUALS	(\$12.46)	\$7.40	(\$5.77)	(\$536.22)	(\$753.58)	(\$191.70)	(\$0.38)
ANCILLARY SERVICES	(\$4,341.46)	(\$4,388.26)	(\$4,342.91)	(\$4,274.79)	(\$4,268.34)	(\$4,277.40)	(\$4,324.04)
TCC	\$0.00	\$0.00	\$0.00	\$0.00	\$0.00	\$0.00	\$0.00
	15	16	17	18	19	20	21
ENERGY	\$619.13	\$87.86	\$206.72	\$263.24	\$395.68	\$0.00	\$0.00
TRANSMISSION SERVICE	\$30.52	\$6.37	\$13.91	\$17.98	\$35.04	\$0.00	\$0.00
UPLIFT	(\$0.01)	\$0.00	\$0.01	\$0.00	\$0.00	\$0.00	\$0.00
RESIDUALS	(\$29.79)	(\$1.56)	(\$8.21)	(\$11.74)	(\$153.41)	\$0.00	\$0.00
ANCILLARY SERVICES	(\$4,302.65)	(\$4,330.87)	(\$4,322.06)	(\$4,317.35)	(\$4,301.44)	\$0.00	\$0.00
TCC	\$0.00	\$0.00	\$0.00	\$0.00	\$0.00	\$0.00	\$0.00
	22	23	24	25	26	27	28
ENERGY	\$0.00	(\$8.81)	\$8.15	(\$1.14)	(\$423.87)	\$0.00	\$0.00
TRANSMISSION SERVICE	\$0.00	(\$0.51)	\$0.00	\$0.00	(\$30.16)	\$0.00	\$0.00
UPLIFT	\$0.00	\$0.00	\$0.00	\$0.00	\$0.00	\$0.00	\$0.00
RESIDUALS	\$0.00	\$3.00	\$0.59	\$1.14	\$126.55	\$0.00	\$0.00
ANCILLARY SERVICES	\$0.00	(\$545.82)	\$0.00	\$0.00	(\$39.19)	\$0.00	\$0.00
TCC	\$0.00	\$0.00	\$0.00	\$0.00	\$0.00	\$0.00	\$0.00
	29	30					
ENERGY	\$0.00	\$0.00					
TRANSMISSION SERVICE	\$0.00	\$0.00					
UPLIFT	\$0.00	\$0.00					
RESIDUALS	\$0.00	\$0.00					
ANCILLARY SERVICES	\$0.00	\$0.00					
TCC	\$0.00	\$0.00					



SETTLEMENTS REPORT
 April 2024 Settlement Adjustment
 May 7, 2024

Weekly Settlement – Market Supply Analysis

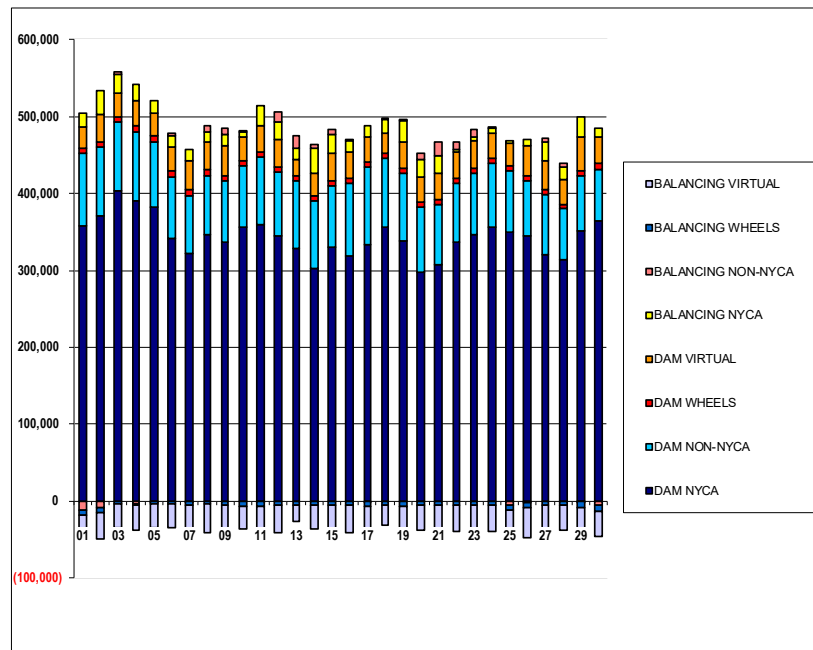
	MONDAY	TUESDAY	WEDNESDAY	THURSDAY	FRIDAY	SATURDAY	SUNDAY
	1	2	3	4	5	6	7
DAM NYCA	358,098	370,629	404,089	390,391	383,007	340,889	321,439
DAM NON-NYCA	93,802	89,706	88,691	90,535	84,581	81,352	76,141
DAM WHEELS	6,408	6,408	6,408	7,958	7,258	7,308	7,308
DAM VIRTUAL	27,683	35,516	31,595	32,758	30,169	30,533	38,064
BALANCING NYCA	18,376	31,087	25,115	20,580	15,912	15,396	15,039
BALANCING NON-NYCA	(12,535)	(8,230)	2,209	(3,333)	(422)	3,515	(515)
BALANCING WHEELS	(5,610)	(6,408)	(3,982)	(2,771)	(4,276)	(3,840)	(5,611)
BALANCING VIRTUAL	(27,683)	(35,516)	(31,595)	(32,758)	(30,169)	(30,533)	(38,064)
	8	9	10	11	12	13	14
DAM NYCA	347,183	337,441	355,483	358,771	344,659	328,140	302,011
DAM NON-NYCA	76,483	78,809	80,846	88,458	83,976	88,328	87,967
DAM WHEELS	7,086	6,408	6,636	6,508	6,408	6,408	6,408
DAM VIRTUAL	36,488	39,859	30,120	34,737	34,598	21,362	29,838
BALANCING NYCA	13,264	13,796	7,559	25,529	23,834	15,348	32,141
BALANCING NON-NYCA	7,519	9,363	845	(578)	12,707	14,906	5,213
BALANCING WHEELS	(4,263)	(6,084)	(6,536)	(6,366)	(6,408)	(6,058)	(6,401)
BALANCING VIRTUAL	(36,488)	(39,859)	(30,120)	(34,737)	(34,598)	(21,362)	(29,838)
	15	16	17	18	19	20	21
DAM NYCA	329,438	319,469	334,114	355,726	338,634	296,868	307,066
DAM NON-NYCA	81,323	93,533	100,029	89,881	87,100	86,252	79,317
DAM WHEELS	6,408	6,408	6,408	6,408	7,008	6,408	6,408
DAM VIRTUAL	35,978	34,716	32,640	25,848	35,103	32,123	34,049
BALANCING NYCA	23,210	13,884	15,181	19,143	26,628	21,935	22,800
BALANCING NON-NYCA	7,482	2,079	(1,014)	1,299	412	8,110	17,221
BALANCING WHEELS	(6,408)	(6,408)	(6,408)	(6,408)	(6,908)	(6,408)	(5,758)
BALANCING VIRTUAL	(35,978)	(34,716)	(32,640)	(25,848)	(35,103)	(32,123)	(34,049)
	22	23	24	25	26	27	28
DAM NYCA	337,319	346,669	355,850	350,264	345,282	320,816	313,266
DAM NON-NYCA	76,742	79,546	83,881	78,925	71,324	77,782	66,714
DAM WHEELS	6,408	6,408	6,408	6,408	6,408	6,408	6,408
DAM VIRTUAL	33,528	36,535	32,973	30,115	38,712	37,531	31,188
BALANCING NYCA	4,024	4,698	6,601	2,345	8,952	24,851	17,505
BALANCING NON-NYCA	8,463	10,185	846	(6,010)	(2,449)	5,129	3,905
BALANCING WHEELS	(6,208)	(6,308)	(6,268)	(6,408)	(6,408)	(6,408)	(6,363)
BALANCING VIRTUAL	(33,528)	(36,535)	(32,973)	(30,115)	(38,712)	(37,531)	(31,188)
	29	30					
DAM NYCA	351,537	364,864					
DAM NON-NYCA	70,946	66,247					
DAM WHEELS	7,658	8,888					
DAM VIRTUAL	43,575	33,177					
BALANCING NYCA	25,335	12,343					
BALANCING NON-NYCA	(800)	(5,211)					
BALANCING WHEELS	(7,458)	(8,663)					
BALANCING VIRTUAL	(43,575)	(33,177)					



SETTLEMENTS REPORT
 April 2024 Settlement Adjustment
 May 7, 2024

Initial Settlement Adjustment – Market Supply Analysis

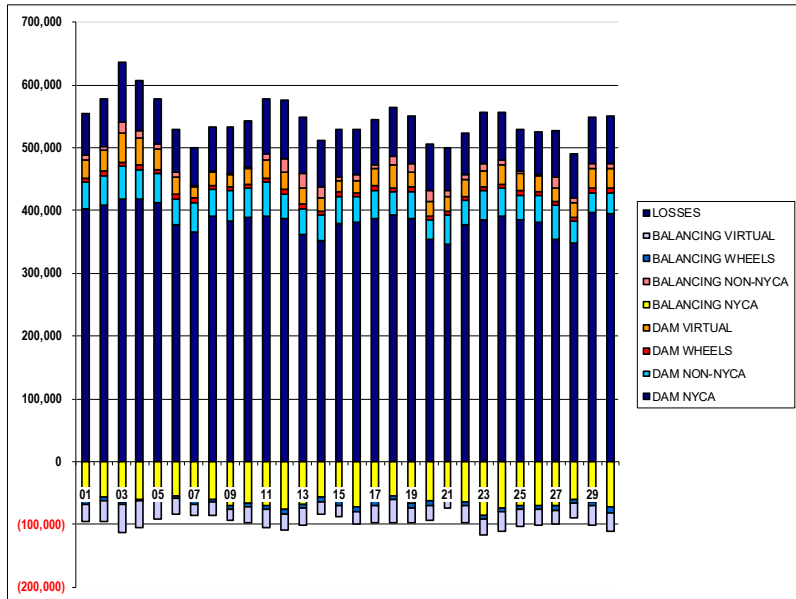
	MONDAY	TUESDAY	WEDNESDAY	THURSDAY	FRIDAY	SATURDAY	SUNDAY
	1	2	3	4	5	6	7
DAM NYCA	358,098	370,629	404,089	390,391	383,007	340,889	321,439
DAM NON-NYCA	93,802	89,706	88,691	90,535	84,581	81,352	76,141
DAM WHEELS	6,408	6,408	6,408	7,958	7,258	7,308	7,308
DAM VIRTUAL	27,683	35,516	31,595	32,758	30,169	30,533	38,064
BALANCING NYCA	18,236	30,938	24,947	20,596	15,910	15,403	15,019
BALANCING NON-NYCA	(12,535)	(8,230)	2,209	(3,333)	(422)	3,515	(515)
BALANCING WHEELS	(5,610)	(6,408)	(3,982)	(2,771)	(4,276)	(3,840)	(5,611)
BALANCING VIRTUAL	(27,683)	(35,516)	(31,595)	(32,758)	(30,169)	(30,533)	(38,064)
	8	9	10	11	12	13	14
DAM NYCA	347,183	337,441	355,483	358,771	344,659	328,140	302,011
DAM NON-NYCA	76,483	78,809	80,846	88,458	83,976	88,328	87,967
DAM WHEELS	7,086	6,408	6,636	6,508	6,408	6,408	6,408
DAM VIRTUAL	36,488	39,859	30,120	34,737	34,598	21,362	29,838
BALANCING NYCA	13,262	13,768	7,561	25,550	23,846	15,382	32,149
BALANCING NON-NYCA	7,519	9,363	845	(578)	12,707	14,906	5,213
BALANCING WHEELS	(4,263)	(6,084)	(6,536)	(6,366)	(6,408)	(6,058)	(6,401)
BALANCING VIRTUAL	(36,488)	(39,859)	(30,120)	(34,737)	(34,598)	(21,362)	(29,838)
	15	16	17	18	19	20	21
DAM NYCA	329,438	319,469	334,114	355,726	338,634	296,868	307,066
DAM NON-NYCA	81,323	93,533	100,029	89,881	87,100	86,252	79,317
DAM WHEELS	6,408	6,408	6,408	6,408	7,008	6,408	6,408
DAM VIRTUAL	35,978	34,716	32,640	25,848	35,103	32,123	34,049
BALANCING NYCA	23,230	13,888	15,190	19,155	26,640	21,935	22,800
BALANCING NON-NYCA	7,482	2,079	(1,014)	1,299	412	8,110	17,221
BALANCING WHEELS	(6,408)	(6,408)	(6,408)	(6,408)	(6,908)	(6,408)	(5,758)
BALANCING VIRTUAL	(35,978)	(34,716)	(32,640)	(25,848)	(35,103)	(32,123)	(34,049)
	22	23	24	25	26	27	28
DAM NYCA	337,319	346,669	355,850	350,264	345,282	320,816	313,266
DAM NON-NYCA	76,742	79,546	83,881	78,925	71,324	77,782	66,714
DAM WHEELS	6,408	6,408	6,408	6,408	6,408	6,408	6,408
DAM VIRTUAL	33,528	36,535	32,973	30,115	38,712	37,531	31,188
BALANCING NYCA	4,024	4,698	6,601	2,345	8,936	24,851	17,505
BALANCING NON-NYCA	8,463	10,185	846	(6,010)	(2,449)	5,129	3,905
BALANCING WHEELS	(6,208)	(6,308)	(6,268)	(6,408)	(6,408)	(6,408)	(6,363)
BALANCING VIRTUAL	(33,528)	(36,535)	(32,973)	(30,115)	(38,712)	(37,531)	(31,188)
	29	30					
DAM NYCA	351,537	364,864					
DAM NON-NYCA	70,946	66,247					
DAM WHEELS	7,658	8,888					
DAM VIRTUAL	43,575	33,177					
BALANCING NYCA	25,335	12,343					
BALANCING NON-NYCA	(800)	(5,211)					
BALANCING WHEELS	(7,458)	(8,653)					
BALANCING VIRTUAL	(43,575)	(33,177)					



SETTLEMENTS REPORT
 April 2024 Settlement Adjustment
 May 7, 2024

Weekly Settlement – Market Withdrawals Analysis

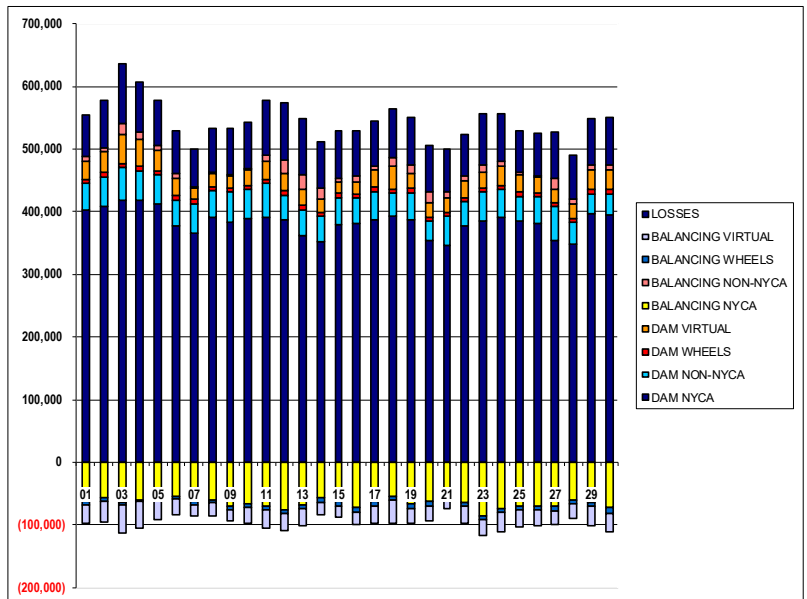
	MONDAY	TUESDAY	WEDNESDAY	THURSDAY	FRIDAY	SATURDAY	SUNDAY
	1	2	3	4	5	6	7
DAM NYCA	402,963	409,195	418,202	418,282	412,224	376,995	366,229
DAM NON-NYCA	42,011	46,645	52,470	46,272	46,076	42,219	45,805
DAM WHEELS	6,408	6,408	6,408	7,958	7,258	7,308	7,308
DAM VIRTUAL	28,952	32,970	45,374	42,051	32,691	27,011	17,879
BALANCING NYCA	(61,583)	(56,011)	(63,861)	(59,530)	(55,095)	(53,722)	(62,620)
BALANCING NON-NYCA	8,202	6,631	18,691	13,142	7,909	8,093	1,684
BALANCING WHEELS	(5,610)	(6,408)	(3,982)	(2,771)	(4,276)	(3,840)	(5,611)
BALANCING VIRTUAL	(28,952)	(32,970)	(45,374)	(42,051)	(32,691)	(27,011)	(17,879)
UFE/LOSSES	66,148	76,731	94,602	80,009	71,965	67,568	61,006
	8	9	10	11	12	13	14
DAM NYCA	391,198	382,936	389,646	391,510	386,396	362,683	352,744
DAM NON-NYCA	42,110	49,064	45,815	54,000	40,547	40,466	40,580
DAM WHEELS	7,086	6,408	6,636	6,508	6,408	6,408	6,408
DAM VIRTUAL	20,719	17,918	24,821	28,139	27,063	26,660	20,373
BALANCING NYCA	(60,630)	(69,287)	(65,797)	(70,026)	(76,233)	(68,563)	(56,962)
BALANCING NON-NYCA	2,613	2,616	2,865	10,064	21,634	22,281	18,437
BALANCING WHEELS	(4,263)	(6,084)	(6,536)	(6,366)	(6,408)	(6,058)	(6,401)
BALANCING VIRTUAL	(20,719)	(17,918)	(24,821)	(28,139)	(27,063)	(26,660)	(20,373)
UFE/LOSSES	69,158	74,079	72,205	86,633	92,832	89,856	72,534
	15	16	17	18	19	20	21
DAM NYCA	379,052	381,787	387,744	392,420	387,567	354,310	346,130
DAM NON-NYCA	43,672	39,472	44,587	36,589	42,195	30,125	46,059
DAM WHEELS	6,408	6,408	6,408	6,408	7,008	6,408	6,408
DAM VIRTUAL	18,089	20,707	27,627	36,359	24,309	23,777	22,657
BALANCING NYCA	(63,079)	(72,475)	(62,942)	(54,497)	(66,321)	(62,919)	(44,831)
BALANCING NON-NYCA	6,745	8,469	6,559	15,160	12,808	17,563	10,218
BALANCING WHEELS	(6,408)	(6,408)	(6,408)	(6,408)	(6,908)	(6,408)	(5,758)
BALANCING VIRTUAL	(18,089)	(20,707)	(27,627)	(36,359)	(24,309)	(23,777)	(22,657)
UFE/LOSSES	75,064	71,711	72,361	76,378	76,526	74,086	68,828
	22	23	24	25	26	27	28
DAM NYCA	376,796	385,607	390,701	385,527	381,369	354,406	348,001
DAM NON-NYCA	38,673	46,621	44,764	39,073	42,368	53,242	35,208
DAM WHEELS	6,408	6,408	6,408	6,408	6,408	6,408	6,408
DAM VIRTUAL	27,100	23,634	30,708	28,495	25,230	22,009	22,307
BALANCING NYCA	(63,620)	(86,026)	(72,980)	(69,040)	(69,643)	(70,415)	(60,662)
BALANCING NON-NYCA	7,256	12,205	7,846	4,070	2,650	16,289	8,929
BALANCING WHEELS	(6,208)	(6,308)	(6,268)	(6,408)	(6,408)	(6,408)	(6,363)
BALANCING VIRTUAL	(27,100)	(23,634)	(30,708)	(28,495)	(25,230)	(22,009)	(22,307)
UFE/LOSSES	67,443	82,690	76,846	65,693	66,365	75,057	69,913
	29	30					
DAM NYCA	397,191	395,564					
DAM NON-NYCA	31,428	31,538					
DAM WHEELS	7,658	8,888					
DAM VIRTUAL	30,026	30,350					
BALANCING NYCA	(63,369)	(72,489)					
BALANCING NON-NYCA	8,247	7,840					
BALANCING WHEELS	(7,458)	(8,663)					
BALANCING VIRTUAL	(30,026)	(30,350)					
UFE/LOSSES	73,522	75,790					



SETTLEMENTS REPORT
 April 2024 Settlement Adjustment
 May 7, 2024

Initial Settlement Adjustment – Market Withdrawals Analysis

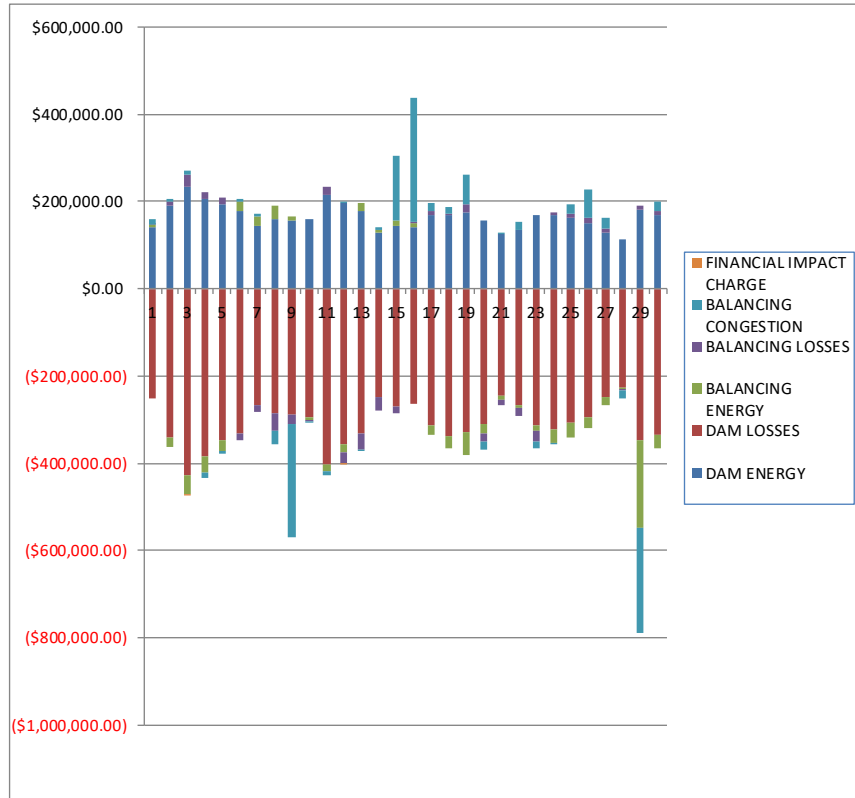
	MONDAY	TUESDAY	WEDNESDAY	THURSDAY	FRIDAY	SATURDAY	SUNDAY
	1	2	3	4	5	6	7
DAM NYCA	402,963	409,195	418,202	418,282	412,224	376,995	366,229
DAM NON-NYCA	42,011	46,645	52,470	46,272	46,076	42,219	45,805
DAM WHEELS	6,408	6,408	6,408	7,958	7,258	7,308	7,308
DAM VIRTUAL	28,952	32,970	45,374	42,051	32,691	27,011	17,879
BALANCING NYCA	(61,711)	(56,153)	(64,027)	(59,518)	(55,108)	(53,716)	(62,640)
BALANCING NON-NYCA	8,202	6,631	18,691	13,142	7,909	8,093	1,684
BALANCING WHEELS	(5,610)	(6,408)	(3,982)	(2,771)	(4,276)	(3,840)	(5,611)
BALANCING VIRTUAL	(28,952)	(32,970)	(45,374)	(42,051)	(32,691)	(27,011)	(17,879)
UFE/LOSSES	66,136	76,725	94,599	80,013	71,976	67,568	61,006
	8	9	10	11	12	13	14
DAM NYCA	391,198	382,936	389,646	391,510	386,396	362,683	352,744
DAM NON-NYCA	42,110	49,064	45,815	54,000	40,547	40,466	40,580
DAM WHEELS	7,086	6,408	6,636	6,508	6,408	6,408	6,408
DAM VIRTUAL	20,719	17,918	24,821	28,139	27,063	26,660	20,373
BALANCING NYCA	(60,631)	(69,315)	(65,796)	(69,987)	(76,188)	(68,530)	(56,954)
BALANCING NON-NYCA	2,613	2,616	2,865	10,064	21,634	22,281	18,437
BALANCING WHEELS	(4,263)	(6,084)	(6,536)	(6,366)	(6,408)	(6,058)	(6,401)
BALANCING VIRTUAL	(20,719)	(17,918)	(24,821)	(28,139)	(27,063)	(26,660)	(20,373)
UFE/LOSSES	69,158	74,079	72,205	86,615	92,799	89,856	72,533
	15	16	17	18	19	20	21
DAM NYCA	379,052	381,787	387,744	392,420	387,567	354,310	346,130
DAM NON-NYCA	43,672	39,472	44,587	36,589	42,195	30,125	46,059
DAM WHEELS	6,408	6,408	6,408	6,408	7,008	6,408	6,408
DAM VIRTUAL	18,089	20,707	27,627	36,359	24,309	23,777	22,657
BALANCING NYCA	(63,059)	(72,471)	(62,932)	(54,485)	(66,298)	(62,919)	(44,831)
BALANCING NON-NYCA	6,745	8,469	6,559	15,160	12,808	17,563	10,218
BALANCING WHEELS	(6,408)	(6,408)	(6,408)	(6,408)	(6,908)	(6,408)	(5,758)
BALANCING VIRTUAL	(18,089)	(20,707)	(27,627)	(36,359)	(24,309)	(23,777)	(22,657)
UFE/LOSSES	75,084	71,711	72,361	76,378	76,514	74,086	68,828
	22	23	24	25	26	27	28
DAM NYCA	376,796	385,607	390,701	385,527	381,369	354,406	348,001
DAM NON-NYCA	38,673	46,621	44,764	39,073	42,368	53,242	35,208
DAM WHEELS	6,408	6,408	6,408	6,408	6,408	6,408	6,408
DAM VIRTUAL	27,100	23,634	30,708	28,495	25,230	22,009	22,307
BALANCING NYCA	(63,620)	(86,026)	(72,980)	(69,040)	(69,663)	(70,415)	(60,662)
BALANCING NON-NYCA	7,256	12,205	7,846	4,070	2,650	16,289	8,929
BALANCING WHEELS	(6,208)	(6,308)	(6,268)	(6,408)	(6,408)	(6,408)	(6,363)
BALANCING VIRTUAL	(27,100)	(23,634)	(30,708)	(28,495)	(25,230)	(22,009)	(22,307)
UFE/LOSSES	67,443	82,690	76,846	65,893	66,369	75,057	69,913
	29	30					
DAM NYCA	397,191	395,564					
DAM NON-NYCA	31,428	31,538					
DAM WHEELS	7,658	8,888					
DAM VIRTUAL	30,026	30,350					
BALANCING NYCA	(63,369)	(72,489)					
BALANCING NON-NYCA	8,247	7,840					
BALANCING WHEELS	(7,458)	(8,663)					
BALANCING VIRTUAL	(30,026)	(30,350)					
UFE/LOSSES	73,522	75,790					



SETTLEMENTS REPORT
 April 2024 Settlement Adjustment
 May 7, 2024

Weekly Settlement – Market Residuals Analysis

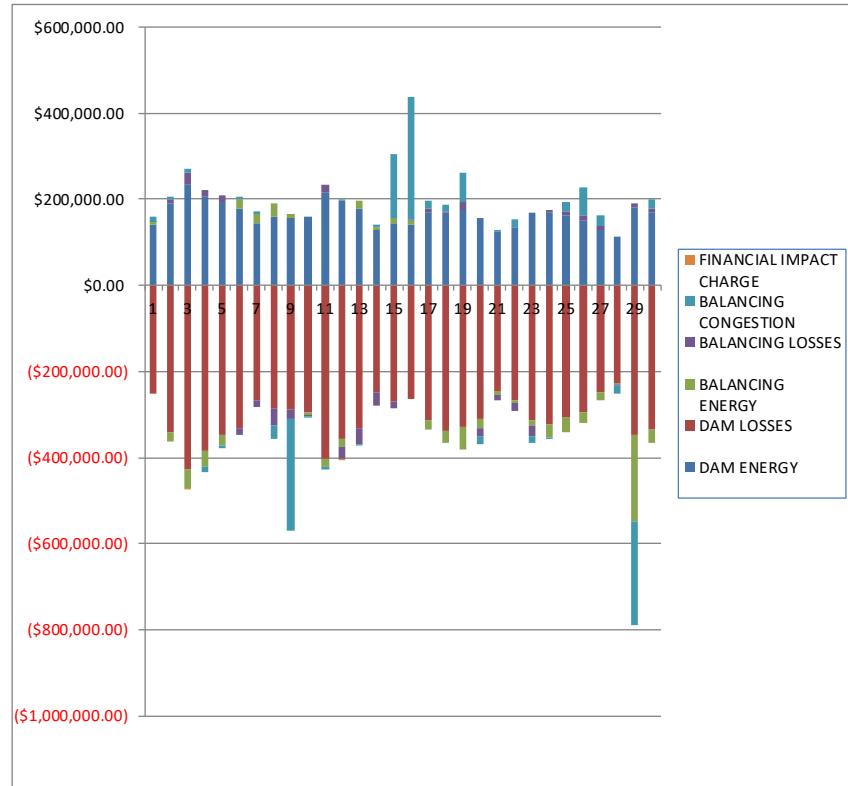
	MONDAY	TUESDAY	WEDNESDAY	THURSDAY	FRIDAY	SATURDAY	SUNDAY
	1	2	3	4	5	6	7
DAM ENERGY	\$142,157.67	\$190,761.53	\$233,724.84	\$204,717.84	\$193,660.01	\$179,004.87	\$143,815.05
DAM LOSSES	(\$252,662.24)	(\$342,326.16)	(\$428,646.23)	(\$384,349.02)	(\$348,077.97)	(\$331,229.19)	(\$266,458.28)
BALANCING ENERGY	\$3,958.90	(\$20,303.86)	(\$43,525.97)	(\$36,179.01)	(\$23,221.10)	\$19,747.65	\$22,264.85
BALANCING LOSSES	\$1,287.85	\$9,239.45	\$27,394.43	\$17,072.81	\$15,557.01	(\$17,243.79)	(\$16,801.29)
BALANCING CONGESTION	\$11,051.75	\$5,185.42	\$10,936.73	(\$12,623.44)	(\$6,635.24)	\$8,564.21	\$5,902.98
FINACIAL IMPACT CHARGE	\$0.00	\$0.00	(\$60.77)	\$0.00	\$0.00	\$0.00	\$0.00
	8	9	10	11	12	13	14
DAM ENERGY	\$158,918.66	\$156,334.16	\$160,644.79	\$215,451.07	\$196,204.02	\$177,162.50	\$129,288.03
DAM LOSSES	(\$286,819.91)	(\$289,235.31)	(\$295,509.39)	(\$402,199.46)	(\$357,026.04)	(\$330,897.41)	(\$247,200.78)
BALANCING ENERGY	\$31,858.01	\$9,730.04	(\$3,951.86)	(\$17,208.59)	(\$16,962.84)	\$20,106.92	\$6,569.33
BALANCING LOSSES	(\$38,979.55)	(\$20,304.57)	(\$2,935.31)	\$17,635.32	(\$26,434.14)	(\$36,557.74)	(\$31,016.65)
BALANCING CONGESTION	(\$31,823.45)	(\$258,673.43)	(\$2,561.05)	(\$8,005.65)	\$1,012.00	(\$4,095.86)	\$5,313.36
FINACIAL IMPACT CHARGE	\$0.00	\$0.00	\$0.00	\$0.00	(\$45.65)	\$0.00	\$0.00
	15	16	17	18	19	20	21
DAM ENERGY	\$143,008.64	\$140,286.90	\$170,407.62	\$169,375.60	\$174,106.48	\$157,497.68	\$127,043.18
DAM LOSSES	(\$270,755.79)	(\$264,426.59)	(\$312,359.22)	(\$338,202.41)	(\$328,657.42)	(\$310,623.49)	(\$244,923.14)
BALANCING ENERGY	\$13,052.58	\$10,774.95	(\$22,454.26)	(\$27,858.78)	(\$53,560.19)	(\$21,651.75)	(\$9,250.89)
BALANCING LOSSES	(\$14,287.34)	\$2,886.44	\$8,797.44	\$3,447.89	\$19,899.00	(\$18,029.44)	(\$13,277.74)
BALANCING CONGESTION	\$148,449.88	\$283,945.46	\$18,614.19	\$15,595.07	\$68,458.12	(\$19,023.63)	\$999.63
FINACIAL IMPACT CHARGE	\$0.00	\$0.00	\$0.00	\$0.00	\$0.00	\$0.00	\$0.00
	22	23	24	25	26	27	28
DAM ENERGY	\$133,790.83	\$168,929.86	\$168,507.44	\$161,678.81	\$151,518.29	\$129,953.49	\$112,981.14
DAM LOSSES	(\$266,386.95)	(\$312,011.10)	(\$322,886.41)	(\$305,885.15)	(\$294,699.84)	(\$248,429.62)	(\$225,620.51)
BALANCING ENERGY	(\$5,111.88)	(\$14,217.36)	(\$28,914.16)	(\$33,884.79)	(\$23,827.61)	(\$17,117.46)	(\$3,514.62)
BALANCING LOSSES	(\$20,257.15)	(\$23,004.51)	\$5,862.78	\$11,346.17	\$10,229.45	\$9,282.91	(\$3,032.45)
BALANCING CONGESTION	\$20,127.12	(\$15,902.11)	(\$3,717.87)	\$21,905.44	\$66,297.96	\$23,694.37	(\$18,581.98)
FINACIAL IMPACT CHARGE	\$0.00	\$0.00	\$0.00	\$0.00	\$0.00	\$0.00	\$0.00
	29	30					
DAM ENERGY	\$181,827.22	\$170,118.59					
DAM LOSSES	(\$345,737.32)	(\$334,410.06)					
BALANCING ENERGY	(\$202,420.70)	(\$30,415.39)					
BALANCING LOSSES	\$9,648.25	\$9,167.58					
BALANCING CONGESTION	(\$241,684.54)	\$19,385.79					
FINACIAL IMPACT CHARGE	\$0.00	\$0.00					



SETTLEMENTS REPORT
April 2024 Settlement Adjustment
May 7, 2024

Initial Settlement Adjustment – Market Residuals Analysis

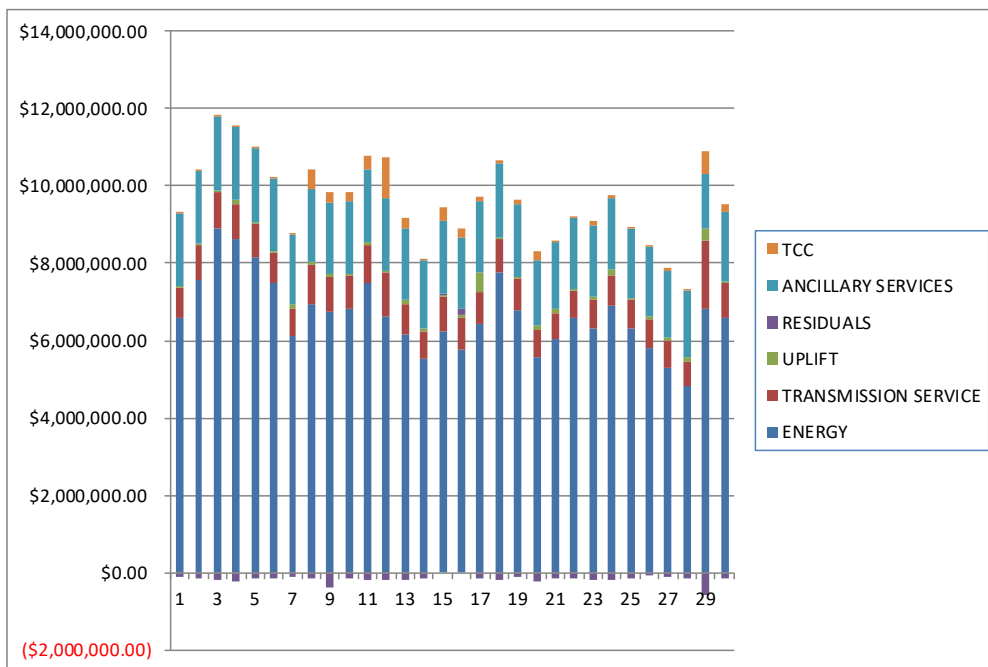
	MONDAY	TUESDAY	WEDNESDAY	THURSDAY	FRIDAY	SATURDAY	SUNDAY
	1	2	3	4	5	6	7
DAM ENERGY	\$142,157.67	\$190,761.53	\$233,724.84	\$204,717.84	\$193,660.01	\$179,004.87	\$143,815.05
DAM LOSSES	(\$252,662.23)	(\$342,326.15)	(\$428,646.23)	(\$384,349.02)	(\$348,077.97)	(\$331,229.19)	(\$266,458.28)
BALANCING ENERGY	\$3,786.73	(\$20,370.28)	(\$43,506.79)	(\$36,077.49)	(\$22,930.77)	\$19,747.78	\$22,266.48
BALANCING LOSSES	\$1,437.23	\$9,370.63	\$27,564.32	\$17,020.20	\$15,573.60	(\$17,254.14)	(\$16,806.67)
BALANCING CONGESTION	\$11,051.75	\$5,185.28	\$11,058.40	(\$12,623.32)	(\$6,630.70)	\$8,564.21	\$5,902.97
FINANCIAL IMPACT CHARGE	\$0.00	\$0.00	(\$60.78)	\$0.00	\$0.00	\$0.00	\$0.00
	8	9	10	11	12	13	14
DAM ENERGY	\$158,918.66	\$156,334.16	\$160,644.79	\$215,451.07	\$196,204.02	\$177,162.50	\$129,288.03
DAM LOSSES	(\$286,819.91)	(\$289,235.32)	(\$295,509.38)	(\$402,199.45)	(\$357,026.05)	(\$330,897.40)	(\$247,200.79)
BALANCING ENERGY	\$31,865.94	\$9,735.75	(\$3,952.96)	(\$17,694.57)	(\$17,732.07)	\$20,105.52	\$6,579.99
BALANCING LOSSES	(\$38,997.16)	(\$20,302.87)	(\$2,939.99)	\$17,591.91	(\$26,454.09)	(\$36,580.22)	(\$31,027.84)
BALANCING CONGESTION	(\$31,826.23)	(\$258,673.43)	(\$2,561.05)	(\$8,012.49)	\$1,047.62	(\$4,263.69)	\$5,313.52
FINANCIAL IMPACT CHARGE	\$0.00	\$0.00	\$0.00	\$0.00	(\$45.66)	\$0.00	\$0.00
	15	16	17	18	19	20	21
DAM ENERGY	\$143,008.64	\$140,286.91	\$170,407.62	\$169,375.60	\$174,106.48	\$157,497.68	\$127,043.18
DAM LOSSES	(\$270,755.79)	(\$264,426.59)	(\$312,359.22)	(\$338,202.41)	(\$328,657.42)	(\$310,623.49)	(\$244,923.14)
BALANCING ENERGY	\$13,053.02	\$10,776.55	(\$22,454.21)	(\$27,858.70)	(\$53,761.92)	(\$21,651.75)	(\$9,250.89)
BALANCING LOSSES	(\$14,317.57)	\$2,882.88	\$8,789.17	\$3,437.60	\$19,894.99	(\$18,029.44)	(\$13,277.74)
BALANCING CONGESTION	\$148,449.88	\$283,945.85	\$18,614.20	\$15,593.54	\$68,510.45	(\$19,023.63)	\$999.63
FINANCIAL IMPACT CHARGE	\$0.00	\$0.00	\$0.00	\$0.00	\$0.00	\$0.00	\$0.00
	22	23	24	25	26	27	28
DAM ENERGY	\$133,790.83	\$168,929.85	\$168,507.45	\$161,678.81	\$151,518.28	\$129,953.49	\$112,981.14
DAM LOSSES	(\$266,386.95)	(\$312,011.10)	(\$322,886.42)	(\$305,885.15)	(\$294,699.85)	(\$248,429.62)	(\$225,620.51)
BALANCING ENERGY	(\$5,111.88)	(\$14,213.85)	(\$28,913.73)	(\$33,883.71)	(\$23,729.71)	(\$17,117.46)	(\$3,514.62)
BALANCING LOSSES	(\$20,257.15)	(\$23,004.29)	\$5,862.93	\$11,346.23	\$10,258.12	\$9,282.91	(\$3,032.45)
BALANCING CONGESTION	\$20,127.12	(\$15,902.83)	(\$3,717.86)	\$21,905.44	\$66,297.96	\$23,694.37	(\$18,581.98)
FINANCIAL IMPACT CHARGE	\$0.00	\$0.00	\$0.00	\$0.00	\$0.00	\$0.00	\$0.00
	29	30					
DAM ENERGY	\$181,827.22	\$170,118.59					
DAM LOSSES	(\$345,737.32)	(\$334,410.06)					
BALANCING ENERGY	(\$202,420.70)	(\$30,415.39)					
BALANCING LOSSES	\$9,648.25	\$9,167.58					
BALANCING CONGESTION	(\$241,684.54)	\$19,385.79					
FINANCIAL IMPACT CHARGE	\$0.00	\$0.00					



SETTLEMENTS REPORT
April 2024 Settlement Adjustment
May 7, 2024

Weekly Settlement – Market Costs Analysis

	MONDAY	TUESDAY	WEDNESDAY	THURSDAY	FRIDAY	SATURDAY	SUNDAY
	1	2	3	4	5	6	7
ENERGY	\$6,574,734.28	\$7,583,354.21	\$8,886,520.62	\$8,613,158.07	\$8,163,309.60	\$7,473,055.19	\$6,127,651.25
TRANSMISSION SERVICE	\$789,814.64	\$875,700.88	\$935,993.58	\$923,002.90	\$867,977.40	\$797,460.76	\$706,720.70
UPLIFT	\$64,400.58	\$63,391.68	\$56,717.37	\$88,823.58	\$42,287.50	\$44,434.91	\$87,070.95
RESIDUALS	(\$94,206.07)	(\$157,443.62)	(\$200,176.97)	(\$211,360.82)	(\$168,717.29)	(\$141,156.25)	(\$111,276.69)
ANCILLARY SERVICES	\$1,842,899.97	\$1,866,126.49	\$1,908,495.33	\$1,893,253.90	\$1,882,894.60	\$1,864,708.50	\$1,810,253.49
TCC	\$34,604.03	\$24,041.07	\$61,460.55	\$34,117.20	\$14,703.10	\$52,799.00	\$21,621.40
	8	9	10	11	12	13	14
ENERGY	\$6,932,884.56	\$6,754,897.63	\$6,810,012.83	\$7,504,240.04	\$6,621,315.07	\$6,158,840.27	\$5,540,704.43
TRANSMISSION SERVICE	\$1,030,029.04	\$887,738.06	\$890,931.97	\$967,111.05	\$1,124,817.92	\$785,856.40	\$695,815.66
UPLIFT	\$73,874.66	\$90,970.30	\$23,907.91	\$69,977.60	\$42,031.58	\$107,499.71	\$76,939.27
RESIDUALS	(\$166,846.24)	(\$402,149.11)	(\$144,312.82)	(\$194,327.31)	(\$203,252.65)	(\$174,281.59)	(\$137,046.71)
ANCILLARY SERVICES	\$1,884,054.28	\$1,830,148.62	\$1,865,071.89	\$1,891,398.40	\$1,885,677.87	\$1,832,094.76	\$1,781,880.30
TCC	\$517,274.53	\$269,129.30	\$248,946.00	\$364,679.35	\$1,069,708.59	\$282,375.01	\$13,729.47
	15	16	17	18	19	20	21
ENERGY	\$6,228,287.74	\$5,759,077.10	\$6,421,978.21	\$7,760,692.94	\$6,775,559.92	\$5,566,946.01	\$6,021,342.20
TRANSMISSION SERVICE	\$920,154.45	\$839,476.20	\$840,865.96	\$854,291.99	\$831,533.51	\$721,015.25	\$700,545.16
UPLIFT	\$36,624.07	\$60,050.66	\$509,962.04	\$49,693.30	\$41,515.75	\$84,490.87	\$86,733.74
RESIDUALS	\$19,467.97	\$173,467.16	(\$136,994.23)	(\$177,642.63)	(\$119,754.01)	(\$211,830.63)	(\$139,408.96)
ANCILLARY SERVICES	\$1,877,617.87	\$1,831,793.83	\$1,824,377.22	\$1,919,427.98	\$1,877,638.78	\$1,699,315.46	\$1,726,503.85
TCC	\$359,921.10	\$221,054.78	\$107,365.74	\$82,606.57	\$104,889.58	\$256,106.30	\$57,621.85
	22	23	24	25	26	27	28
ENERGY	\$6,580,138.91	\$6,297,564.58	\$6,887,585.87	\$6,321,845.20	\$5,804,052.45	\$5,311,518.10	\$4,821,202.50
TRANSMISSION SERVICE	\$693,438.67	\$779,542.57	\$784,097.60	\$739,130.00	\$749,507.85	\$703,065.06	\$638,958.97
UPLIFT	\$46,578.55	\$63,969.23	\$170,408.07	\$51,687.30	\$80,238.39	\$63,857.86	\$93,632.60
RESIDUALS	(\$137,838.03)	(\$196,205.22)	(\$181,148.22)	(\$144,839.52)	(\$90,481.75)	(\$102,616.31)	(\$137,768.42)
ANCILLARY SERVICES	\$1,855,342.07	\$1,841,526.70	\$1,822,525.89	\$1,796,599.98	\$1,779,773.55	\$1,737,501.48	\$1,738,921.51
TCC	\$14,114.99	\$101,276.19	\$81,596.30	\$7,050.74	\$57,819.40	\$50,536.73	\$4,371.86
	29	30					
ENERGY	\$6,807,619.19	\$6,596,480.71					
TRANSMISSION SERVICE	\$1,765,109.08	\$885,004.95					
UPLIFT	\$309,798.70	\$52,980.15					
RESIDUALS	(\$598,367.09)	(\$166,153.49)					
ANCILLARY SERVICES	\$1,428,059.23	\$1,811,708.84					
TCC	\$570,146.65	\$189,490.79					



SETTLEMENTS REPORT
April 2024 Settlement Adjustment
May 7, 2024

Initial Settlement Adjustment – Market Costs Analysis

	MONDAY	TUESDAY	WEDNESDAY	THURSDAY	FRIDAY	SATURDAY	SUNDAY
	1	2	3	4	5	6	7
ENERGY	\$6,571,684.32	\$7,579,893.15	\$8,881,091.42	\$8,613,552.67	\$8,162,979.59	\$7,473,280.70	\$6,127,269.86
TRANSMISSION SERVICE	\$789,618.16	\$875,481.51	\$935,738.84	\$923,021.38	\$867,957.95	\$797,470.65	\$706,689.97
UPLIFT	\$64,400.57	\$63,391.67	\$56,717.36	\$88,823.57	\$42,287.49	\$44,434.91	\$87,070.96
RESIDUALS	(\$94,228.85)	(\$157,378.99)	(\$199,866.24)	(\$211,311.79)	(\$168,405.83)	(\$141,166.47)	(\$111,280.45)
ANCILLARY SERVICES	\$1,838,324.18	\$1,861,530.28	\$1,903,857.81	\$1,888,937.11	\$1,878,537.44	\$1,860,381.73	\$1,805,879.19
TCC	\$34,604.03	\$24,041.07	\$61,460.55	\$34,117.20	\$14,703.10	\$52,799.00	\$21,621.40
	8	9	10	11	12	13	14
ENERGY	\$6,932,856.48	\$6,754,348.69	\$6,810,085.59	\$7,505,470.50	\$6,622,438.99	\$6,159,358.03	\$5,540,938.80
TRANSMISSION SERVICE	\$1,030,026.38	\$887,695.39	\$890,934.77	\$967,170.84	\$1,124,887.78	\$785,908.52	\$695,827.89
UPLIFT	\$73,874.66	\$90,970.27	\$23,907.90	\$69,977.60	\$42,031.58	\$107,499.71	\$76,939.28
RESIDUALS	(\$166,858.70)	(\$402,141.71)	(\$144,318.59)	(\$194,863.53)	(\$204,006.23)	(\$174,473.29)	(\$137,047.09)
ANCILLARY SERVICES	\$1,879,712.82	\$1,825,760.36	\$1,860,728.98	\$1,887,123.61	\$1,881,409.53	\$1,827,817.36	\$1,777,556.26
TCC	\$517,274.53	\$269,129.30	\$248,946.00	\$364,679.35	\$1,069,708.59	\$282,375.01	\$13,729.47
	15	16	17	18	19	20	21
ENERGY	\$6,228,906.87	\$5,759,164.96	\$6,422,184.93	\$7,760,956.18	\$6,775,955.60	\$5,566,946.01	\$6,021,342.20
TRANSMISSION SERVICE	\$920,184.97	\$839,482.57	\$840,879.87	\$854,309.97	\$831,568.55	\$721,015.25	\$700,545.16
UPLIFT	\$36,624.06	\$60,050.66	\$509,962.05	\$49,693.30	\$41,515.75	\$84,490.87	\$86,733.74
RESIDUALS	\$19,438.18	\$173,465.60	(\$137,002.44)	(\$177,654.37)	(\$119,907.42)	(\$211,830.63)	(\$139,408.96)
ANCILLARY SERVICES	\$1,873,315.22	\$1,827,462.96	\$1,820,055.16	\$1,915,110.63	\$1,873,337.34	\$1,699,315.46	\$1,726,503.85
TCC	\$359,921.10	\$221,054.78	\$107,365.74	\$82,606.57	\$104,889.58	\$256,106.30	\$57,621.85
	22	23	24	25	26	27	28
ENERGY	\$6,580,138.91	\$6,297,555.77	\$6,887,594.02	\$6,321,844.06	\$5,803,628.58	\$5,311,518.10	\$4,821,202.50
TRANSMISSION SERVICE	\$693,438.67	\$779,542.06	\$784,097.60	\$739,130.00	\$749,477.69	\$703,065.06	\$638,958.97
UPLIFT	\$46,578.55	\$63,969.23	\$170,408.07	\$51,687.30	\$80,238.39	\$63,857.86	\$93,632.60
RESIDUALS	(\$137,838.03)	(\$196,202.22)	(\$181,147.63)	(\$144,838.38)	(\$90,355.20)	(\$102,616.31)	(\$137,768.42)
ANCILLARY SERVICES	\$1,855,342.07	\$1,840,980.88	\$1,822,525.89	\$1,796,599.98	\$1,779,734.36	\$1,737,501.48	\$1,738,921.51
TCC	\$14,114.99	\$101,276.19	\$81,596.30	\$7,050.74	\$57,819.40	\$50,536.73	\$4,371.86
	29	30					
ENERGY	\$6,807,619.19	\$6,596,480.71					
TRANSMISSION SERVICE	\$1,765,109.08	\$885,004.95					
UPLIFT	\$309,798.70	\$52,980.15					
RESIDUALS	(\$598,367.09)	(\$166,153.49)					
ANCILLARY SERVICES	\$1,428,059.23	\$1,811,708.84					
TCC	\$570,146.65	\$189,490.79					

