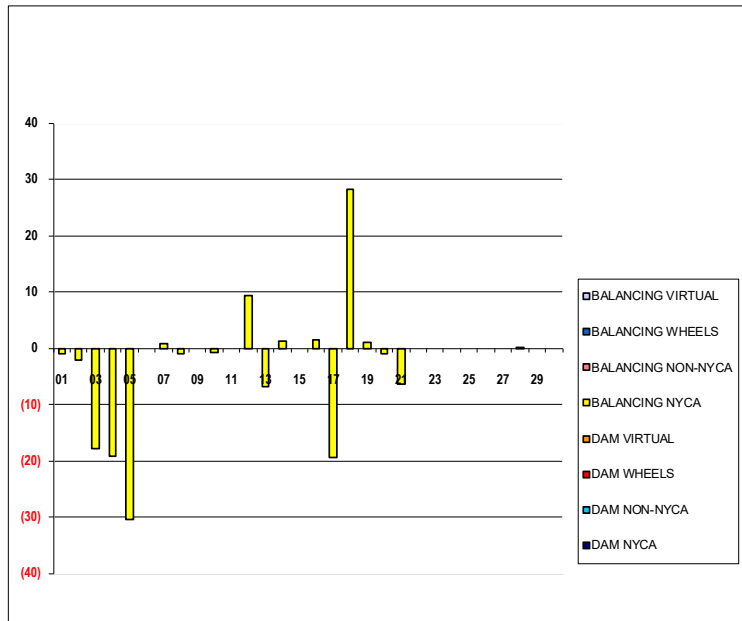


SETTLEMENTS REPORT
 June 2024 Settlement Adjustment
 July 8, 2024

Initial – Market Supply Delta Analysis

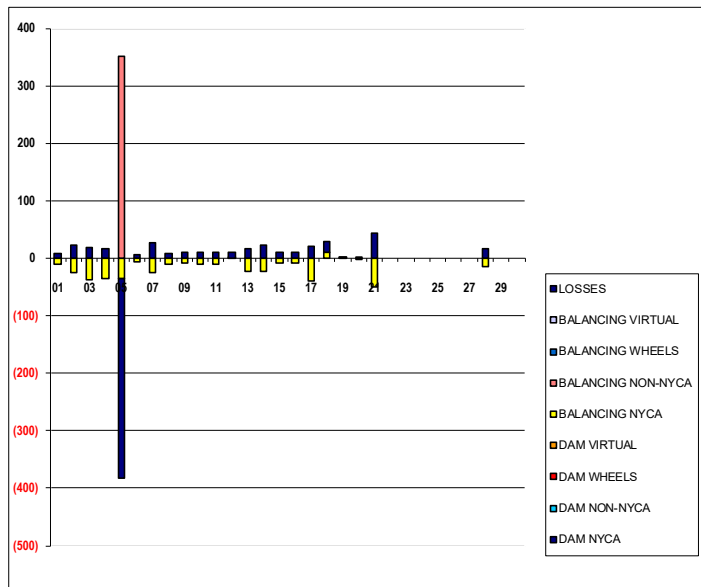
	MONDAY	TUESDAY	WEDNESDAY	THURSDAY	FRIDAY	SATURDAY	SUNDAY
						1	2
DAM NYCA						0	0
DAM NON-NYCA						0	0
DAM WHEELS						0	0
DAM VIRTUAL						0	0
BALANCING NYCA						(1)	(2)
BALANCING NON-NYCA						0	0
BALANCING WHEELS						0	0
BALANCING VIRTUAL						0	0
	3	4	5	6	7	8	9
DAM NYCA	0	0	0	0	0	0	0
DAM NON-NYCA	0	0	0	0	0	0	0
DAM WHEELS	0	0	0	0	0	0	0
DAM VIRTUAL	0	0	0	0	0	0	0
BALANCING NYCA	(18)	(19)	(31)	0	1	(1)	0
BALANCING NON-NYCA	0	0	0	0	0	0	0
BALANCING WHEELS	0	0	0	0	0	0	0
BALANCING VIRTUAL	0	0	0	0	0	0	0
	10	11	12	13	14	15	16
DAM NYCA	0	0	0	0	0	0	0
DAM NON-NYCA	0	0	0	0	0	0	0
DAM WHEELS	0	0	0	0	0	0	0
DAM VIRTUAL	0	0	0	0	0	0	0
BALANCING NYCA	(1)	0	9	(7)	1	0	2
BALANCING NON-NYCA	0	0	0	0	0	0	0
BALANCING WHEELS	0	0	0	0	0	0	0
BALANCING VIRTUAL	0	0	0	0	0	0	0
	17	18	19	20	21	22	23
DAM NYCA	0	0	0	0	0	0	0
DAM NON-NYCA	0	0	0	0	0	0	0
DAM WHEELS	0	0	0	0	0	0	0
DAM VIRTUAL	0	0	0	0	0	0	0
BALANCING NYCA	(19)	28	1	(1)	(6)	0	0
BALANCING NON-NYCA	0	0	0	0	0	0	0
BALANCING WHEELS	0	0	0	0	0	0	0
BALANCING VIRTUAL	0	0	0	0	0	0	0
	24	25	26	27	28	29	30
DAM NYCA	0	0	0	0	0	0	0
DAM NON-NYCA	0	0	0	0	0	0	0
DAM WHEELS	0	0	0	0	0	0	0
DAM VIRTUAL	0	0	0	0	0	0	0
BALANCING NYCA	0	0	0	0	0	0	0
BALANCING NON-NYCA	0	0	0	0	0	0	0
BALANCING WHEELS	0	0	0	0	0	0	0
BALANCING VIRTUAL	0	0	0	0	0	0	0



SETTLEMENTS REPORT
 June 2024 Settlement Adjustment
 July 8, 2024

Initial – Market Withdrawals Delta Analysis

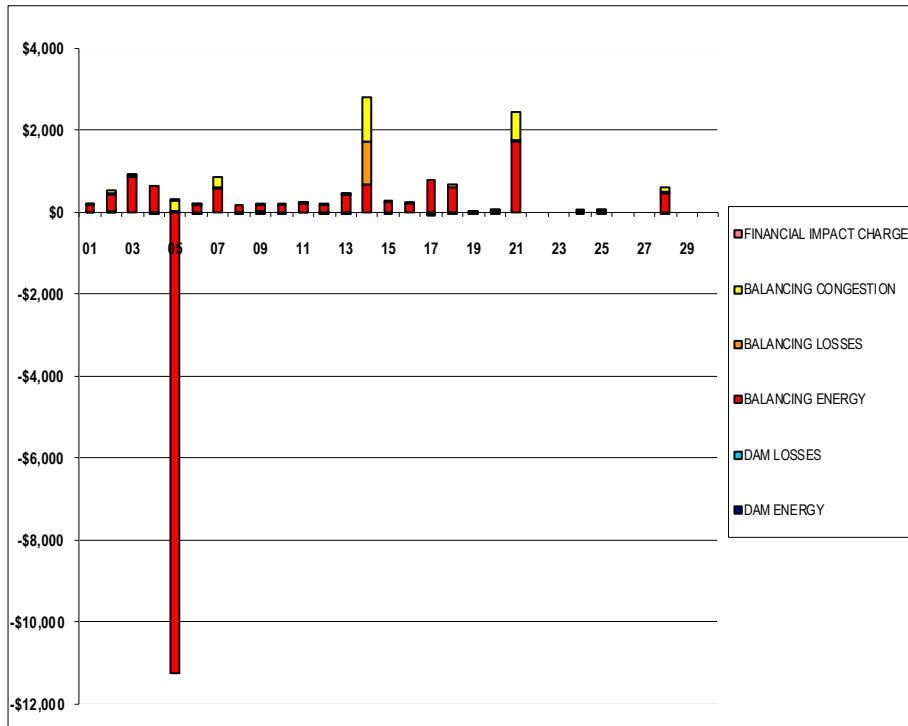
	MONDAY	TUESDAY	WEDNESDAY	THURSDAY	FRIDAY	SATURDAY	SUNDAY
						1	2
DAM NYCA						0	0
DAM NON-NYCA						0	0
DAM WHEELS						0	0
DAM VIRTUAL						0	0
BALANCING NYCA						(10)	(25)
BALANCING NON-NYCA						0	0
BALANCING WHEELS						0	0
BALANCING VIRTUAL						0	0
UFE/LOSSES						9	23
	3	4	5	6	7	8	9
DAM NYCA	0	0	0	0	0	0	0
DAM NON-NYCA	0	0	0	0	0	0	0
DAM WHEELS	0	0	0	0	0	0	0
DAM VIRTUAL	0	0	0	0	0	0	0
BALANCING NYCA	(37)	(35)	(36)	(7)	(26)	(10)	(9)
BALANCING NON-NYCA	0	0	351	0	0	0	0
BALANCING WHEELS	0	0	0	0	0	0	0
BALANCING VIRTUAL	0	0	0	0	0	0	0
UFE/LOSSES	19	16	(346)	7	27	9	9
	10	11	12	13	14	15	16
DAM NYCA	0	0	0	0	0	0	0
DAM NON-NYCA	0	0	0	0	0	0	0
DAM WHEELS	0	0	0	0	0	0	0
DAM VIRTUAL	0	0	0	0	0	0	0
BALANCING NYCA	(10)	(10)	0	(23)	(22)	(9)	(8)
BALANCING NON-NYCA	0	0	0	0	0	0	0
BALANCING WHEELS	0	0	0	0	0	0	0
BALANCING VIRTUAL	0	0	0	0	0	0	0
UFE/LOSSES	10	10	9	16	23	9	9
	17	18	19	20	21	22	23
DAM NYCA	0	0	0	0	0	0	0
DAM NON-NYCA	0	0	0	0	0	0	0
DAM WHEELS	0	0	0	0	0	0	0
DAM VIRTUAL	0	0	0	0	0	0	0
BALANCING NYCA	(40)	10	1	(1)	(51)	0	0
BALANCING NON-NYCA	0	0	0	0	0	0	0
BALANCING WHEELS	0	0	0	0	0	0	0
BALANCING VIRTUAL	0	0	0	0	0	0	0
UFE/LOSSES	21	18	0	0	44	0	0
	24	25	26	27	28	29	30
DAM NYCA	0	0	0	0	0	0	0
DAM NON-NYCA	0	0	0	0	0	0	0
DAM WHEELS	0	0	0	0	0	0	0
DAM VIRTUAL	0	0	0	0	0	0	0
BALANCING NYCA	0	0	0	0	(15)	0	0
BALANCING NON-NYCA	0	0	0	0	0	0	0
BALANCING WHEELS	0	0	0	0	0	0	0
BALANCING VIRTUAL	0	0	0	0	0	0	0
UFE/LOSSES	0	0	0	0	16	0	0



SETTLEMENTS REPORT
 June 2024 Settlement Adjustment
 July 8, 2024

Initial – Market Residuals Delta Analysis

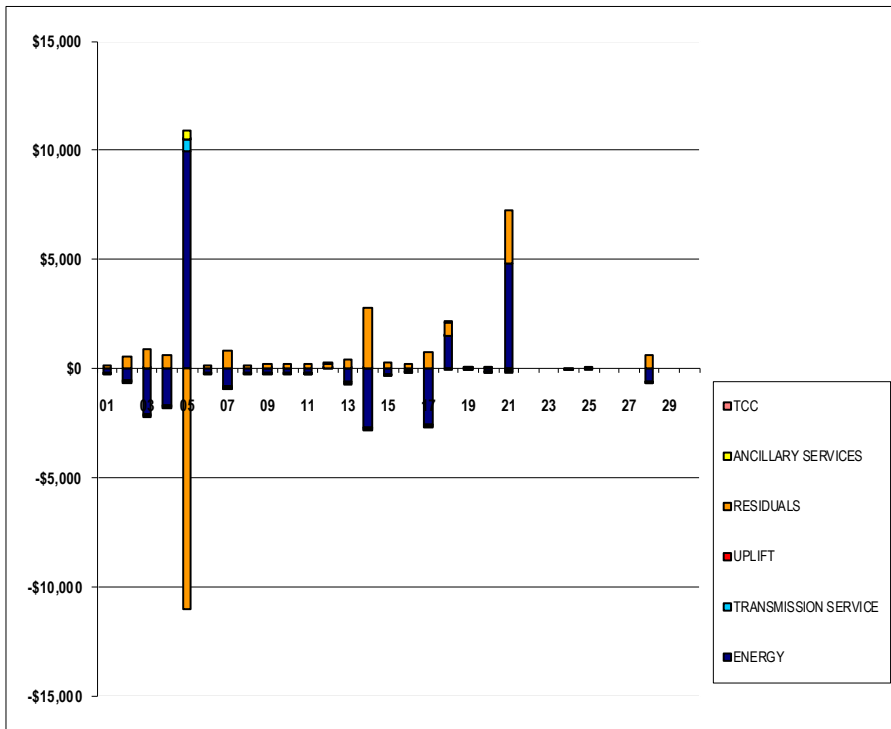
	MONDAY	TUESDAY	WEDNESDAY	THURSDAY	FRIDAY	SATURDAY	SUNDAY
						1	2
DAM ENERGY						\$0.00	\$0.01
DAM LOSSES						\$0.01	\$0.01
BALANCING ENERGY						\$148.65	\$426.19
BALANCING LOSSES						\$0.05	\$20.70
BALANCING CONGESTION						\$0.34	\$61.46
FINANCIAL IMPACT CHARGE						\$0.00	\$0.00
	3	4	5	6	7	8	9
DAM ENERGY	\$0.00	\$0.00	(\$0.01)	(\$0.01)	\$0.00	\$0.00	\$0.01
DAM LOSSES	\$0.00	\$0.00	\$0.01	(\$0.01)	\$0.00	\$0.01	\$0.01
BALANCING ENERGY	\$850.56	\$645.16	(\$11,276.44)	\$154.00	\$571.45	\$167.07	\$157.13
BALANCING LOSSES	\$20.40	(\$2.72)	\$14.30	\$2.16	\$39.31	(\$0.58)	(\$2.36)
BALANCING CONGESTION	\$0.79	(\$5.56)	\$246.05	\$8.74	\$223.53	(\$0.58)	\$23.40
FINANCIAL IMPACT CHARGE	\$0.00	\$0.00	\$0.02	\$0.00	\$0.00	\$0.00	\$0.00
	10	11	12	13	14	15	16
DAM ENERGY	(\$0.01)	\$0.00	(\$0.01)	\$0.00	\$0.00	\$0.00	\$0.00
DAM LOSSES	\$0.00	\$0.01	\$0.01	(\$0.01)	\$0.00	\$0.00	\$0.00
BALANCING ENERGY	\$177.35	\$188.57	\$170.93	\$419.78	\$676.92	\$248.19	\$202.86
BALANCING LOSSES	\$1.13	\$1.92	\$4.40	\$10.40	\$1,052.49	(\$0.96)	\$2.67
BALANCING CONGESTION	(\$0.03)	\$0.02	(\$1.21)	(\$26.46)	\$1,066.80	\$0.56	\$0.00
FINANCIAL IMPACT CHARGE	\$0.00	\$0.00	\$0.00	\$0.03	\$0.00	\$0.00	\$0.00
	17	18	19	20	21	22	23
DAM ENERGY	\$0.00	\$0.00	\$0.01	\$0.00	\$0.00	\$0.00	\$0.00
DAM LOSSES	\$0.00	\$0.00	\$0.00	\$0.01	\$0.00	\$0.00	\$0.00
BALANCING ENERGY	\$777.80	\$611.45	(\$5.95)	(\$4.06)	\$1,708.73	\$0.00	\$0.00
BALANCING LOSSES	(\$39.08)	\$43.01	(\$1.40)	\$5.08	\$38.28	\$0.00	\$0.00
BALANCING CONGESTION	(\$7.30)	(\$35.91)	(\$0.43)	\$13.19	\$691.18	\$0.00	\$0.00
FINANCIAL IMPACT CHARGE	(\$0.05)	\$0.00	\$0.01	\$0.01	\$0.00	\$0.00	\$0.00
	24	25	26	27	28	29	30
DAM ENERGY	\$0.00	\$0.00	\$0.00	\$0.00	\$0.00	\$0.00	\$0.00
DAM LOSSES	\$0.00	\$0.00	\$0.00	\$0.00	(\$0.01)	\$0.00	\$0.00
BALANCING ENERGY	\$0.17	\$0.81	\$0.00	\$0.00	\$466.29	\$0.00	\$0.00
BALANCING LOSSES	\$0.01	\$0.02	\$0.00	\$0.00	\$33.02	\$0.00	\$0.00
BALANCING CONGESTION	(\$1.37)	\$0.03	\$0.00	\$0.00	\$113.12	\$0.00	\$0.00
FINANCIAL IMPACT CHARGE	\$0.00	(\$0.01)	\$0.00	\$0.00	\$0.00	\$0.00	\$0.00



SETTLEMENTS REPORT
 June 2024 Settlement Adjustment
 July 8, 2024

Initial – Market Costs Delta Analysis

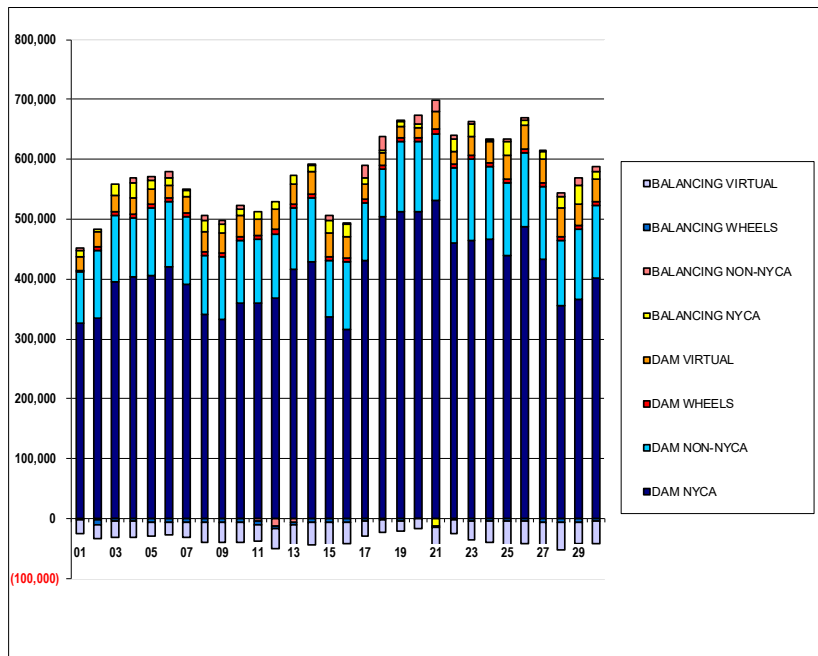
	MONDAY	TUESDAY	WEDNESDAY	THURSDAY	FRIDAY	SATURDAY	SUNDAY
						1	2
ENERGY						(\$179.54)	(\$571.51)
TRANSMISSION SERVICE						(\$16.95)	(\$44.03)
UPLIFT						\$0.00	\$0.00
RESIDUALS						\$149.05	\$508.37
ANCILLARY SERVICES						(\$17.44)	(\$40.29)
TCC						\$0.00	\$0.00
	3	4	5	6	7	8	9
ENERGY	(\$2,108.84)	(\$1,705.67)	\$9,926.92	(\$178.36)	(\$812.13)	(\$184.09)	(\$184.17)
TRANSMISSION SERVICE	(\$65.34)	(\$61.30)	\$552.03	(\$12.29)	(\$45.28)	(\$16.77)	(\$16.28)
UPLIFT	\$0.38	\$0.00	\$0.01	\$0.00	(\$0.01)	\$0.00	\$0.01
RESIDUALS	\$871.75	\$636.88	(\$11,016.07)	\$164.88	\$834.29	\$165.92	\$178.19
ANCILLARY SERVICES	(\$67.26)	(\$63.12)	\$442.18	(\$12.74)	(\$40.09)	(\$17.27)	(\$16.78)
TCC	\$0.00	\$0.00	\$0.00	\$0.00	\$0.00	\$0.00	\$0.00
	10	11	12	13	14	15	16
ENERGY	(\$213.40)	(\$194.79)	\$12.00	(\$605.35)	(\$2,728.91)	(\$247.83)	(\$88.67)
TRANSMISSION SERVICE	(\$18.20)	(\$16.81)	\$0.37	(\$39.69)	(\$39.06)	(\$16.31)	(\$13.89)
UPLIFT	\$0.01	(\$0.02)	\$0.00	\$0.71	\$0.01	\$0.00	(\$0.02)
RESIDUALS	\$178.44	\$190.52	\$174.12	\$403.74	\$2,796.21	\$247.79	\$205.53
ANCILLARY SERVICES	(\$18.74)	(\$17.30)	\$0.37	(\$40.83)	(\$34.08)	(\$16.79)	(\$14.29)
TCC	\$0.00	\$0.00	\$0.00	\$0.00	\$0.00	\$0.00	\$0.00
	17	18	19	20	21	22	23
ENERGY	(\$2,577.43)	\$1,458.09	\$5.12	(\$147.09)	\$4,831.04	\$0.00	\$0.00
TRANSMISSION SERVICE	(\$70.51)	\$15.53	\$1.53	(\$2.16)	(\$88.97)	\$0.00	\$0.00
UPLIFT	\$0.00	\$27.81	(\$0.01)	\$0.01	(\$63.09)	\$0.00	\$0.00
RESIDUALS	\$731.37	\$618.55	(\$7.76)	\$14.23	\$2,438.19	\$0.00	\$0.00
ANCILLARY SERVICES	(\$72.55)	(\$27.15)	\$1.65	(\$2.12)	(\$17.69)	\$0.00	\$0.00
TCC	\$0.00	\$45.15	\$0.00	\$0.00	\$0.00	\$0.00	\$0.00
	24	25	26	27	28	29	30
ENERGY	(\$0.91)	(\$5.39)	\$0.00	\$0.00	(\$612.04)	\$0.00	\$0.00
TRANSMISSION SERVICE	\$0.00	\$0.00	\$0.00	\$0.00	(\$27.09)	\$0.00	\$0.00
UPLIFT	\$0.00	\$0.00	\$0.00	\$0.00	\$0.00	\$0.00	\$0.00
RESIDUALS	(\$1.19)	\$0.85	\$0.00	\$0.00	\$612.42	\$0.00	\$0.00
ANCILLARY SERVICES	\$0.00	\$0.00	\$0.00	\$0.00	(\$22.38)	\$0.00	\$0.00
TCC	\$0.00	\$0.00	\$0.00	\$0.00	\$0.00	\$0.00	\$0.00



SETTLEMENTS REPORT
 June 2024 Settlement Adjustment
 July 8, 2024

Weekly Settlement – Market Supply Analysis

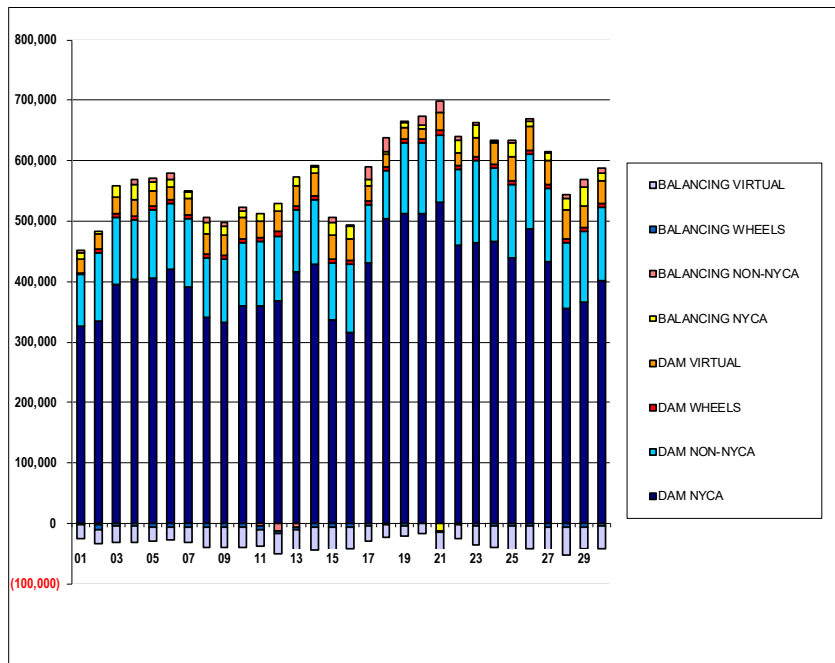
	MONDAY	TUESDAY	WEDNESDAY	THURSDAY	FRIDAY	SATURDAY	SUNDAY
DAM NYCA						1	2
DAM NON-NYCA						325,575	335,534
DAM WHEELS						87,337	111,511
DAM VIRTUAL						1,330	6,864
BALANCING NYCA						23,651	24,578
BALANCING NON-NYCA						10,197	4,391
BALANCING WHEELS						3,603	(2,936)
BALANCING VIRTUAL						(1,330)	(6,864)
						(23,651)	(24,578)
	3	4	5	6	7	8	9
DAM NYCA	395,270	404,020	405,490	420,179	390,410	341,744	332,196
DAM NON-NYCA	111,276	98,081	112,205	107,978	113,881	97,678	104,461
DAM WHEELS	6,384	6,984	7,584	6,984	6,384	6,384	6,384
DAM VIRTUAL	25,900	26,137	24,104	21,106	26,042	32,681	32,931
BALANCING NYCA	19,243	24,832	14,495	12,437	10,273	19,565	16,353
BALANCING NON-NYCA	(1,044)	9,097	6,934	10,933	3,374	7,125	6,331
BALANCING WHEELS	(4,158)	(5,222)	(6,054)	(5,533)	(5,518)	(6,384)	(6,384)
BALANCING VIRTUAL	(25,900)	(26,137)	(24,104)	(21,106)	(26,042)	(32,681)	(32,931)
	10	11	12	13	14	15	16
DAM NYCA	358,708	360,684	367,720	416,313	428,668	337,685	316,240
DAM NON-NYCA	106,037	106,244	108,028	102,290	105,816	93,671	112,235
DAM WHEELS	6,384	6,384	6,384	6,534	6,584	6,384	6,384
DAM VIRTUAL	34,656	27,063	33,724	33,177	38,072	38,713	35,471
BALANCING NYCA	10,378	11,492	14,102	15,347	10,110	21,724	20,689
BALANCING NON-NYCA	6,282	(4,341)	(11,622)	(5,688)	3,254	7,792	2,284
BALANCING WHEELS	(5,835)	(5,724)	(5,456)	(5,367)	(5,716)	(6,384)	(6,384)
BALANCING VIRTUAL	(34,656)	(27,063)	(33,724)	(33,177)	(38,072)	(38,713)	(35,471)
	17	18	19	20	21	22	23
DAM NYCA	430,843	504,833	512,847	512,199	531,469	460,487	463,460
DAM NON-NYCA	95,979	79,573	117,262	116,736	111,068	124,086	136,439
DAM WHEELS	5,764	6,384	6,699	6,664	8,029	6,384	6,384
DAM VIRTUAL	25,338	20,586	16,913	16,695	29,825	22,537	31,158
BALANCING NYCA	10,560	4,490	8,324	6,296	(12,872)	20,307	21,252
BALANCING NON-NYCA	20,655	22,345	2,356	14,396	18,931	6,091	5,164
BALANCING WHEELS	(3,666)	(2,710)	(3,482)	(537)	(2,777)	(3,047)	(3,564)
BALANCING VIRTUAL	(25,338)	(20,586)	(16,913)	(16,695)	(29,825)	(22,537)	(31,158)
	24	25	26	27	28	29	30
DAM NYCA	466,817	438,541	488,218	433,796	355,354	366,429	402,166
DAM NON-NYCA	120,075	121,272	122,437	121,088	109,492	115,904	120,058
DAM WHEELS	6,384	6,984	6,684	6,384	6,384	6,984	6,984
DAM VIRTUAL	35,723	39,363	39,003	38,201	46,540	36,608	37,293
BALANCING NYCA	1,664	23,091	8,757	12,423	19,973	29,885	12,524
BALANCING NON-NYCA	1,091	5,386	4,904	2,597	5,412	12,416	8,395
BALANCING WHEELS	(3,999)	(4,193)	(3,492)	(5,640)	(5,647)	(5,346)	(4,154)
BALANCING VIRTUAL	(35,723)	(39,363)	(39,003)	(38,201)	(46,540)	(36,608)	(37,293)



SETTLEMENTS REPORT
June 2024 Settlement Adjustment
July 8, 2024

Initial Settlement Adjustment – Market Supply Analysis

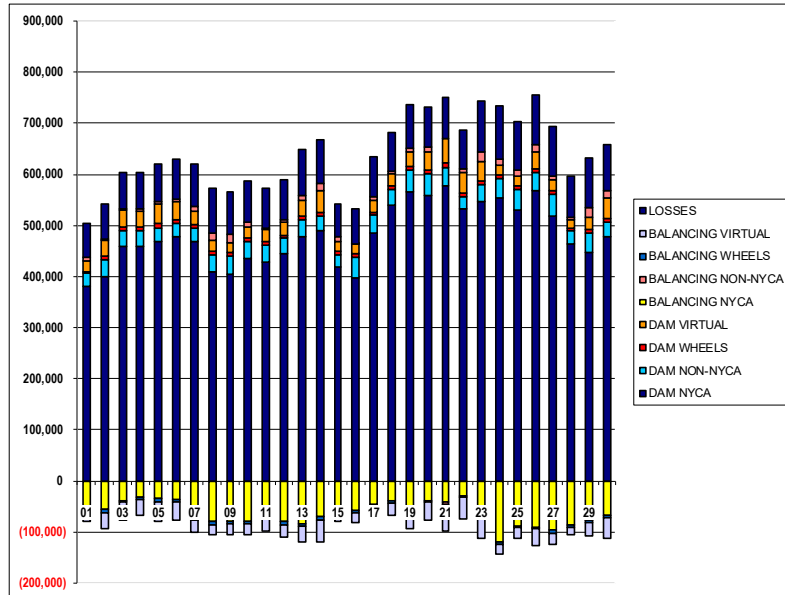
	MONDAY	TUESDAY	WEDNESDAY	THURSDAY	FRIDAY	SATURDAY	SUNDAY
						1	2
DAM NYCA						325,575	335,534
DAM NON-NYCA						87,337	111,511
DAM WHEELS						1,330	6,864
DAM VIRTUAL						23,651	24,578
BALANCING NYCA						10,196	4,389
BALANCING NON-NYCA						3,603	(2,936)
BALANCING WHEELS						(1,330)	(6,864)
BALANCING VIRTUAL						(23,651)	(24,578)
	3	4	5	6	7	8	9
DAM NYCA	395,270	404,020	405,490	420,179	390,410	341,744	332,196
DAM NON-NYCA	111,276	98,081	112,205	107,978	113,881	97,678	104,461
DAM WHEELS	6,384	6,984	7,584	6,984	6,384	6,384	6,384
DAM VIRTUAL	25,900	26,137	24,104	21,106	26,042	32,681	32,931
BALANCING NYCA	19,225	24,813	14,464	12,437	10,274	19,564	16,353
BALANCING NON-NYCA	(1,044)	9,097	6,934	10,933	3,374	7,125	6,331
BALANCING WHEELS	(4,158)	(5,222)	(6,054)	(5,533)	(5,518)	(6,384)	(6,384)
BALANCING VIRTUAL	(25,900)	(26,137)	(24,104)	(21,106)	(26,042)	(32,681)	(32,931)
	10	11	12	13	14	15	16
DAM NYCA	358,708	360,684	367,720	416,313	428,668	337,685	316,240
DAM NON-NYCA	106,037	106,244	108,028	102,290	105,816	93,671	112,235
DAM WHEELS	6,384	6,384	6,384	6,534	6,584	6,384	6,384
DAM VIRTUAL	34,656	27,063	33,724	33,177	38,072	38,713	35,471
BALANCING NYCA	10,377	11,492	14,111	15,340	10,111	21,724	20,691
BALANCING NON-NYCA	6,282	(4,341)	(11,622)	(5,688)	3,254	7,792	2,284
BALANCING WHEELS	(5,835)	(5,724)	(5,456)	(5,367)	(5,716)	(6,384)	(6,384)
BALANCING VIRTUAL	(34,656)	(27,063)	(33,724)	(33,177)	(38,072)	(38,713)	(35,471)
	17	18	19	20	21	22	23
DAM NYCA	430,843	504,833	512,847	512,199	531,469	460,487	463,460
DAM NON-NYCA	95,979	79,573	117,262	116,736	111,068	124,086	136,439
DAM WHEELS	5,764	6,384	6,699	6,664	8,029	6,384	6,384
DAM VIRTUAL	25,338	20,586	16,913	16,695	29,825	22,537	31,158
BALANCING NYCA	10,540	4,518	8,325	6,295	(12,879)	20,307	21,252
BALANCING NON-NYCA	20,655	22,345	2,356	14,396	18,931	6,091	5,164
BALANCING WHEELS	(3,666)	(2,710)	(3,482)	(537)	(2,777)	(3,047)	(3,564)
BALANCING VIRTUAL	(25,338)	(20,586)	(16,913)	(16,695)	(29,825)	(22,537)	(31,158)
	24	25	26	27	28	29	30
DAM NYCA	466,817	438,541	488,218	433,796	355,354	366,429	402,166
DAM NON-NYCA	120,075	121,272	122,437	121,088	109,492	115,904	120,058
DAM WHEELS	6,384	6,984	6,684	6,384	6,384	6,984	6,984
DAM VIRTUAL	35,723	39,363	39,003	38,201	46,540	36,608	37,293
BALANCING NYCA	1,664	23,091	8,757	12,423	19,973	29,885	12,524
BALANCING NON-NYCA	1,091	5,386	4,904	2,597	5,412	12,416	8,395
BALANCING WHEELS	(3,999)	(4,193)	(3,492)	(5,640)	(5,647)	(5,346)	(4,154)
BALANCING VIRTUAL	(35,723)	(39,363)	(39,003)	(38,201)	(46,540)	(36,608)	(37,293)



SETTLEMENTS REPORT
 June 2024 Settlement Adjustment
 July 8, 2024

Weekly Settlement – Market Withdrawals Analysis

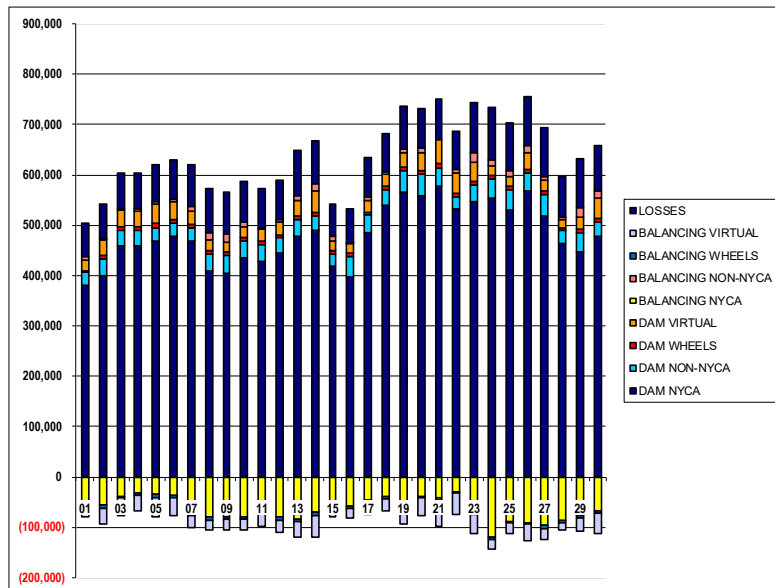
	MONDAY	TUESDAY	WEDNESDAY	THURSDAY	FRIDAY	SATURDAY	SUNDAY
						1	2
DAM NYCA						381,820	399,200
DAM NON-NYCA						25,411	33,001
DAM WHEELS						1,330	6,864
DAM VIRTUAL						23,008	31,893
BALANCING NYCA						(54,323)	(55,059)
BALANCING NON-NYCA						5,908	1,876
BALANCING WHEELS						(1,330)	(6,864)
BALANCING VIRTUAL						(23,008)	(31,893)
UFE/LOSSES						67,896	69,483
	3	4	5	6	7	8	9
DAM NYCA	460,105	458,316	468,728	478,787	469,612	408,742	404,932
DAM NON-NYCA	29,743	32,159	26,851	25,580	25,726	34,430	35,403
DAM WHEELS	6,384	6,984	7,584	6,984	6,384	6,384	6,384
DAM VIRTUAL	33,558	30,185	38,003	35,400	25,143	20,343	20,497
BALANCING NYCA	(38,204)	(31,555)	(34,920)	(35,717)	(70,606)	(79,743)	(78,562)
BALANCING NON-NYCA	3,253	4,032	4,998	5,890	9,836	15,998	15,781
BALANCING WHEELS	(4,158)	(5,222)	(6,054)	(5,533)	(5,518)	(6,384)	(6,384)
BALANCING VIRTUAL	(33,558)	(30,185)	(38,003)	(35,400)	(25,143)	(20,343)	(20,497)
UFE/LOSSES	69,847	73,080	73,466	76,988	83,370	86,685	81,787
	10	11	12	13	14	15	16
DAM NYCA	434,890	428,349	444,601	477,133	490,118	418,403	396,504
DAM NON-NYCA	34,501	33,647	30,394	34,473	28,938	23,945	41,396
DAM WHEELS	6,384	6,384	6,384	6,534	6,584	6,384	6,384
DAM VIRTUAL	21,698	24,784	25,919	30,090	43,582	20,396	18,623
BALANCING NYCA	(78,721)	(67,063)	(79,959)	(83,320)	(70,946)	(53,731)	(57,097)
BALANCING NON-NYCA	8,036	2,631	4,539	10,680	13,906	7,868	1,278
BALANCING WHEELS	(5,835)	(5,724)	(5,456)	(5,367)	(5,716)	(6,384)	(6,384)
BALANCING VIRTUAL	(21,698)	(24,784)	(25,919)	(30,090)	(43,582)	(20,396)	(18,623)
UFE/LOSSES	82,698	76,515	78,652	89,296	86,833	64,387	69,367
	17	18	19	20	21	22	23
DAM NYCA	485,568	538,805	566,143	558,948	578,341	532,331	547,655
DAM NON-NYCA	34,986	32,704	42,385	42,282	35,562	23,696	32,149
DAM WHEELS	5,764	6,384	6,699	6,664	8,029	6,384	6,384
DAM VIRTUAL	24,119	24,706	29,012	35,565	48,178	40,753	38,818
BALANCING NYCA	(46,871)	(39,961)	(60,805)	(40,226)	(42,241)	(29,780)	(71,295)
BALANCING NON-NYCA	5,092	3,278	6,275	10,614	(4,814)	6,902	18,675
BALANCING WHEELS	(3,666)	(2,710)	(3,482)	(537)	(2,777)	(3,047)	(3,564)
BALANCING VIRTUAL	(24,119)	(24,706)	(29,012)	(35,565)	(48,178)	(40,753)	(38,818)
UFE/LOSSES	79,262	76,415	86,791	78,009	81,748	77,823	99,131
	24	25	26	27	28	29	30
DAM NYCA	553,198	530,176	568,234	519,095	463,258	447,755	477,457
DAM NON-NYCA	39,326	39,549	36,639	42,016	26,006	37,374	29,859
DAM WHEELS	6,384	6,984	6,684	6,384	6,384	6,984	6,984
DAM VIRTUAL	18,534	19,885	33,348	21,669	14,687	24,665	40,604
BALANCING NYCA	(119,767)	(88,232)	(90,984)	(96,304)	(86,507)	(76,875)	(67,408)
BALANCING NON-NYCA	12,497	11,487	14,170	7,174	5,667	18,161	13,535
BALANCING WHEELS	(3,999)	(4,193)	(3,492)	(5,640)	(5,647)	(5,346)	(4,154)
BALANCING VIRTUAL	(18,534)	(19,885)	(33,348)	(21,669)	(14,687)	(24,665)	(40,604)
UFE/LOSSES	104,393	95,311	96,256	97,923	80,807	98,218	89,701



SETTLEMENTS REPORT
 June 2024 Settlement Adjustment
 July 8, 2024

Initial Settlement Adjustment – Market Withdrawals Analysis

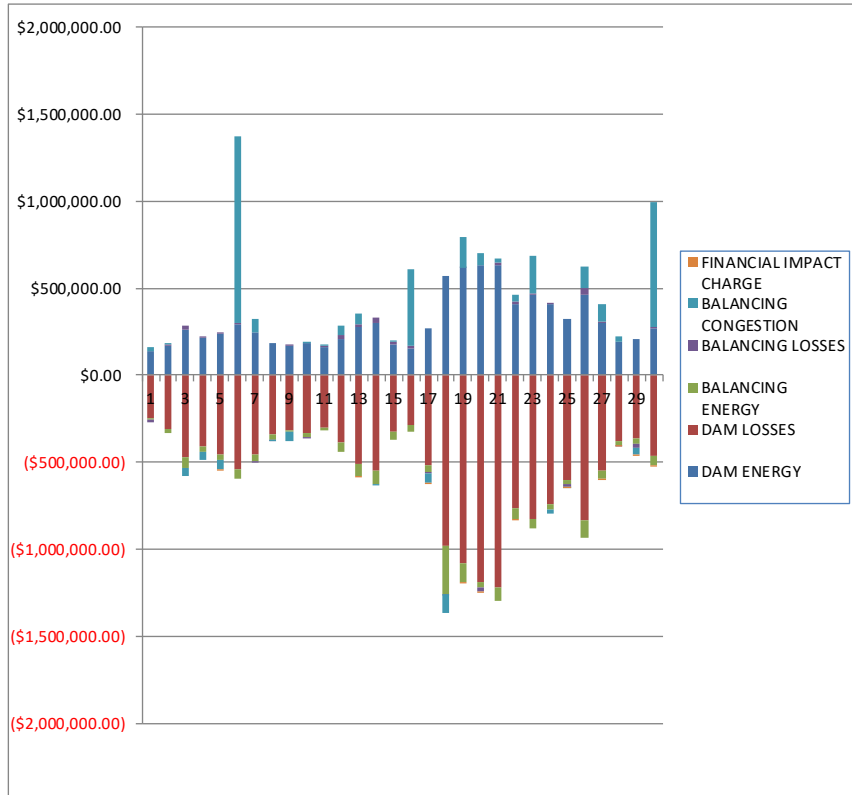
	MONDAY	TUESDAY	WEDNESDAY	THURSDAY	FRIDAY	SATURDAY	SUNDAY
						1	2
DAM NYCA						381,820	399,200
DAM NON-NYCA						25,411	33,001
DAM WHEELS						1,330	6,864
DAM VIRTUAL						23,008	31,893
BALANCING NYCA						(54,333)	(55,084)
BALANCING NON-NYCA						5,908	1,876
BALANCING WHEELS						(1,330)	(6,864)
BALANCING VIRTUAL						(23,008)	(31,893)
UFE/LOSSES						67,905	69,506
	3	4	5	6	7	8	9
DAM NYCA	460,105	458,316	468,728	478,787	469,612	408,742	404,932
DAM NON-NYCA	29,743	32,169	26,851	25,580	25,726	34,430	35,403
DAM WHEELS	6,384	6,984	7,584	6,984	6,384	6,384	6,384
DAM VIRTUAL	33,558	30,185	38,003	35,400	25,143	20,343	20,497
BALANCING NYCA	(38,241)	(31,590)	(34,955)	(35,724)	(70,632)	(79,753)	(78,571)
BALANCING NON-NYCA	3,253	4,032	5,349	5,890	9,836	15,998	15,781
BALANCING WHEELS	(4,158)	(5,222)	(6,054)	(5,533)	(5,518)	(6,384)	(6,384)
BALANCING VIRTUAL	(33,558)	(30,185)	(38,003)	(35,400)	(25,143)	(20,343)	(20,497)
UFE/LOSSES	69,866	73,096	73,120	76,995	83,397	86,694	81,797
	10	11	12	13	14	15	16
DAM NYCA	434,890	428,349	444,601	477,133	490,118	418,403	396,504
DAM NON-NYCA	34,501	33,647	30,394	34,473	28,938	23,945	41,396
DAM WHEELS	6,384	6,384	6,384	6,534	6,584	6,384	6,384
DAM VIRTUAL	21,698	24,784	25,919	30,090	43,582	20,396	18,623
BALANCING NYCA	(78,731)	(67,072)	(79,958)	(83,343)	(70,968)	(53,740)	(57,105)
BALANCING NON-NYCA	8,036	2,631	4,539	10,680	13,906	7,868	1,278
BALANCING WHEELS	(5,835)	(5,724)	(5,456)	(5,367)	(5,716)	(6,384)	(6,384)
BALANCING VIRTUAL	(21,698)	(24,784)	(25,919)	(30,090)	(43,582)	(20,396)	(18,623)
UFE/LOSSES	82,707	76,524	78,661	89,312	85,856	64,396	69,376
	17	18	19	20	21	22	23
DAM NYCA	485,568	538,805	566,143	558,948	578,341	532,331	547,655
DAM NON-NYCA	34,986	32,704	42,385	42,282	35,562	23,696	32,149
DAM WHEELS	5,764	6,384	6,699	6,664	8,029	6,384	6,384
DAM VIRTUAL	24,119	24,706	29,012	35,565	48,178	40,753	38,818
BALANCING NYCA	(46,911)	(39,951)	(60,804)	(40,227)	(42,292)	(29,780)	(71,295)
BALANCING NON-NYCA	5,092	3,278	6,275	10,614	(4,814)	6,902	18,675
BALANCING WHEELS	(3,666)	(2,710)	(3,482)	(537)	(2,777)	(3,047)	(3,564)
BALANCING VIRTUAL	(24,119)	(24,706)	(29,012)	(35,565)	(48,178)	(40,753)	(38,818)
UFE/LOSSES	79,283	76,433	86,791	78,009	81,792	77,823	99,131
	24	25	26	27	28	29	30
DAM NYCA	553,198	530,176	568,234	519,095	463,258	447,755	477,457
DAM NON-NYCA	39,326	39,549	36,639	42,016	26,006	37,374	29,859
DAM WHEELS	6,384	6,984	6,684	6,384	6,384	6,984	6,984
DAM VIRTUAL	18,534	19,885	33,348	21,669	14,687	24,665	40,604
BALANCING NYCA	(119,767)	(88,232)	(90,984)	(96,304)	(85,523)	(76,875)	(67,408)
BALANCING NON-NYCA	12,497	11,487	14,170	7,174	5,667	18,161	13,535
BALANCING WHEELS	(3,999)	(4,193)	(3,492)	(5,640)	(5,647)	(5,346)	(4,154)
BALANCING VIRTUAL	(18,534)	(19,885)	(33,348)	(21,669)	(14,687)	(24,665)	(40,604)
UFE/LOSSES	104,393	95,311	96,256	97,923	80,822	98,218	89,701



SETTLEMENTS REPORT
 June 2024 Settlement Adjustment
 July 8, 2024

Weekly Settlement – Market Residuals Analysis

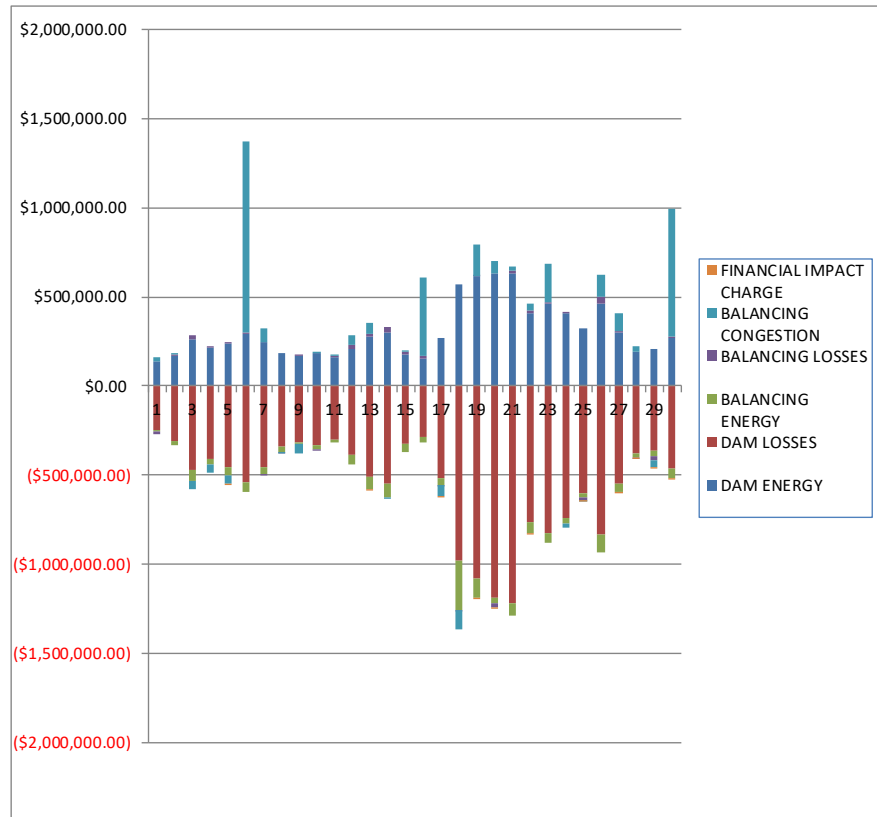
	MONDAY	TUESDAY	WEDNESDAY	THURSDAY	FRIDAY	SATURDAY	SUNDAY
						1	2
DAM ENERGY						\$137,927.78	\$171,168.69
DAM LOSSES						(\$247,322.02)	(\$310,973.48)
BALANCING ENERGY						(\$9,761.11)	(\$18,727.13)
BALANCING LOSSES						(\$10,579.21)	\$2,383.12
BALANCING CONGESTION						\$21,297.85	\$5,301.40
FINANCIAL IMPACT CHARGE						\$0.00	\$0.00
	3	4	5	6	7	8	9
DAM ENERGY	\$259,500.54	\$211,984.37	\$236,168.39	\$290,819.60	\$245,027.60	\$183,167.43	\$170,823.87
DAM LOSSES	(\$475,031.84)	(\$408,098.29)	(\$456,111.77)	(\$539,319.77)	(\$457,300.79)	(\$341,671.49)	(\$314,354.87)
BALANCING ENERGY	(\$60,258.71)	(\$31,421.09)	(\$34,420.37)	(\$58,263.38)	(\$37,526.35)	(\$27,711.30)	(\$13,949.80)
BALANCING LOSSES	\$23,456.14	\$536.81	\$3,176.86	\$11,980.72	(\$4,501.25)	(\$3,712.03)	\$1,448.37
BALANCING CONGESTION	(\$43,358.56)	(\$44,541.84)	(\$49,138.86)	\$1,071,765.72	\$81,092.19	(\$4,610.46)	(\$54,157.99)
FINANCIAL IMPACT CHARGE	\$0.00	\$0.00	(\$32.52)	\$0.00	\$0.00	\$0.00	\$0.00
	10	11	12	13	14	15	16
DAM ENERGY	\$180,738.72	\$164,696.83	\$205,002.52	\$276,159.48	\$302,691.99	\$174,424.18	\$156,989.43
DAM LOSSES	(\$329,215.54)	(\$299,352.60)	(\$386,609.83)	(\$512,681.85)	(\$551,650.98)	(\$327,717.81)	(\$288,228.13)
BALANCING ENERGY	(\$27,191.72)	(\$15,131.20)	(\$51,389.01)	(\$65,013.27)	(\$74,281.33)	(\$40,535.76)	(\$32,927.02)
BALANCING LOSSES	(\$6,123.38)	\$2,297.13	\$25,684.35	\$19,527.39	\$26,355.45	\$13,691.21	\$10,262.31
BALANCING CONGESTION	\$5,355.10	\$12,092.43	\$51,498.21	\$57,815.04	(\$7,051.44)	\$395.67	\$443,951.36
FINANCIAL IMPACT CHARGE	\$0.00	\$0.00	\$0.00	(\$138.39)	\$0.00	\$0.00	\$0.00
	17	18	19	20	21	22	23
DAM ENERGY	\$271,096.65	\$572,532.78	\$612,691.94	\$633,278.37	\$631,083.59	\$410,894.07	\$460,433.56
DAM LOSSES	(\$518,633.86)	(\$980,271.49)	(\$1,082,425.71)	(\$1,186,255.70)	(\$1,222,247.72)	(\$764,003.38)	(\$828,598.21)
BALANCING ENERGY	(\$40,655.52)	(\$278,158.10)	(\$103,870.59)	(\$32,965.35)	(\$70,883.66)	(\$60,007.21)	(\$48,293.33)
BALANCING LOSSES	(\$1,239.88)	(\$2,854.06)	\$6,406.30	(\$24,088.49)	\$12,302.51	\$13,897.43	\$10,811.59
BALANCING CONGESTION	(\$55,201.63)	(\$106,981.35)	\$177,782.65	\$69,235.05	\$28,172.78	\$34,627.26	\$217,113.86
FINANCIAL IMPACT CHARGE	(\$799.88)	\$0.00	(\$27.31)	(\$100.51)	\$0.00	(\$161.84)	\$0.00
	24	25	26	27	28	29	30
DAM ENERGY	\$409,982.06	\$326,349.43	\$463,663.68	\$300,332.34	\$193,934.70	\$204,860.76	\$271,494.00
DAM LOSSES	(\$743,575.57)	(\$602,542.66)	(\$833,337.72)	(\$551,902.68)	(\$376,691.00)	(\$366,930.29)	(\$460,744.90)
BALANCING ENERGY	(\$30,428.42)	(\$21,779.46)	(\$104,749.05)	(\$44,934.52)	(\$26,364.97)	(\$28,177.39)	(\$60,646.19)
BALANCING LOSSES	\$1,957.60	(\$15,584.37)	\$35,042.05	\$6,819.70	(\$944.70)	(\$24,921.84)	\$8,349.85
BALANCING CONGESTION	(\$19,744.45)	(\$2,192.12)	\$127,401.60	\$100,463.19	\$26,122.52	(\$33,742.72)	\$716,523.40
FINANCIAL IMPACT CHARGE	\$0.00	(\$87.26)	\$0.00	(\$814.54)	(\$8.87)	(\$144.88)	(\$1,211.30)



SETTLEMENTS REPORT
June 2024 Settlement Adjustment
July 8, 2024

Initial Settlement Adjustment – Market Residuals Analysis

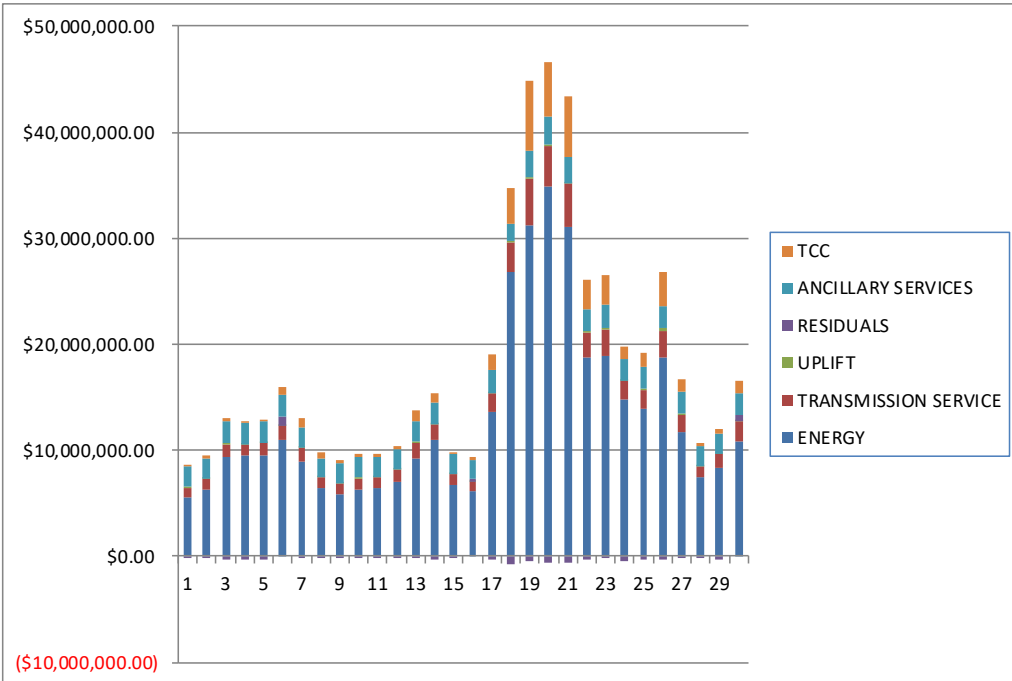
	MONDAY	TUESDAY	WEDNESDAY	THURSDAY	FRIDAY	SATURDAY	SUNDAY
						1	2
DAM ENERGY						\$137,927.78	\$171,168.70
DAM LOSSES						(\$247,322.01)	(\$310,973.47)
BALANCING ENERGY						(\$9,612.46)	(\$18,300.94)
BALANCING LOSSES						(\$10,579.16)	\$2,403.82
BALANCING CONGESTION						\$21,298.19	\$5,362.86
FINANCIAL IMPACT CHARGE						\$0.00	\$0.00
	3	4	5	6	7	8	9
DAM ENERGY	\$259,500.54	\$211,984.37	\$236,168.38	\$290,819.59	\$245,027.60	\$183,167.43	\$170,823.88
DAM LOSSES	(\$475,031.84)	(\$408,098.29)	(\$456,111.76)	(\$539,319.78)	(\$457,300.79)	(\$341,671.48)	(\$314,354.86)
BALANCING ENERGY	(\$59,408.15)	(\$30,775.93)	(\$45,696.81)	(\$58,109.38)	(\$36,954.90)	(\$27,544.23)	(\$13,792.67)
BALANCING LOSSES	\$23,476.54	\$534.09	\$3,191.16	\$11,982.88	(\$4,461.94)	(\$3,712.61)	\$1,446.01
BALANCING CONGESTION	(\$43,357.77)	(\$44,547.40)	(\$48,892.81)	\$1,071,774.46	\$81,315.72	(\$4,611.04)	(\$54,134.59)
FINANCIAL IMPACT CHARGE	\$0.00	\$0.00	(\$32.50)	\$0.00	\$0.00	\$0.00	\$0.00
	10	11	12	13	14	15	16
DAM ENERGY	\$180,738.71	\$164,696.83	\$205,002.51	\$276,159.48	\$302,691.99	\$174,424.18	\$156,989.43
DAM LOSSES	(\$329,215.54)	(\$299,352.59)	(\$386,609.82)	(\$512,681.86)	(\$551,650.98)	(\$327,717.81)	(\$288,228.13)
BALANCING ENERGY	(\$27,014.37)	(\$14,942.63)	(\$51,218.08)	(\$64,593.49)	(\$73,604.41)	(\$40,287.57)	(\$32,724.16)
BALANCING LOSSES	(\$6,122.25)	\$2,299.05	\$25,688.75	\$19,537.79	\$27,407.94	\$13,690.25	\$10,264.98
BALANCING CONGESTION	\$5,355.07	\$12,092.45	\$51,497.00	\$57,788.58	(\$5,984.64)	\$396.23	\$443,951.36
FINANCIAL IMPACT CHARGE	\$0.00	\$0.00	\$0.00	(\$138.36)	\$0.00	\$0.00	\$0.00
	17	18	19	20	21	22	23
DAM ENERGY	\$271,096.65	\$572,532.78	\$612,691.95	\$633,278.37	\$631,083.59	\$410,894.07	\$460,433.56
DAM LOSSES	(\$518,633.86)	(\$980,271.49)	(\$1,082,425.71)	(\$1,186,255.69)	(\$1,222,247.72)	(\$764,003.38)	(\$828,598.21)
BALANCING ENERGY	(\$39,877.72)	(\$277,546.65)	(\$103,876.54)	(\$32,969.45)	(\$69,174.95)	(\$60,007.21)	(\$48,293.33)
BALANCING LOSSES	(\$1,278.96)	(\$2,811.05)	\$6,404.90	(\$24,083.41)	\$12,340.79	\$13,897.43	\$10,811.59
BALANCING CONGESTION	(\$55,208.93)	(\$107,017.26)	\$177,782.22	\$69,248.24	\$28,863.96	\$34,627.26	\$217,113.86
FINANCIAL IMPACT CHARGE	(\$799.93)	\$0.00	(\$27.30)	(\$100.50)	\$0.00	(\$161.84)	\$0.00
	24	25	26	27	28	29	30
DAM ENERGY	\$409,982.06	\$326,349.43	\$463,663.68	\$300,332.34	\$193,934.70	\$204,860.76	\$271,494.00
DAM LOSSES	(\$743,575.57)	(\$602,542.66)	(\$833,337.72)	(\$551,902.68)	(\$376,691.01)	(\$366,930.29)	(\$460,744.90)
BALANCING ENERGY	(\$30,428.25)	(\$21,778.65)	(\$104,749.05)	(\$44,934.52)	(\$25,898.68)	(\$28,177.39)	(\$60,646.19)
BALANCING LOSSES	\$1,957.61	(\$15,584.35)	\$35,042.05	\$6,819.70	(\$911.68)	(\$24,921.84)	\$8,349.85
BALANCING CONGESTION	(\$19,745.82)	(\$2,192.09)	\$127,401.60	\$100,463.19	\$26,235.64	(\$33,742.72)	\$716,523.40
FINANCIAL IMPACT CHARGE	\$0.00	(\$87.27)	\$0.00	(\$814.54)	(\$8.87)	(\$144.88)	(\$1,211.30)



SETTLEMENTS REPORT
 June 2024 Settlement Adjustment
 July 8, 2024

Weekly Settlement – Market Costs Analysis

	MONDAY	TUESDAY	WEDNESDAY	THURSDAY	FRIDAY	SATURDAY	SUNDAY
ENERGY						1	2
TRANSMISSION SERVICE						\$5,587,927.65	\$6,314,476.01
UPLIFT						\$858,779.45	\$985,850.18
RESIDUALS						\$182,540.56	\$32,186.97
ANCILLARY SERVICES						(\$108,436.71)	(\$150,847.40)
TCC						\$1,811,262.24	\$1,852,064.51
						\$200,885.14	\$353,062.47
	3	4	5	6	7	8	9
ENERGY	\$9,395,180.88	\$9,516,986.46	\$9,580,319.37	\$10,959,721.95	\$8,881,306.10	\$6,408,404.05	\$5,876,746.73
TRANSMISSION SERVICE	\$1,220,847.97	\$1,053,473.72	\$1,096,511.11	\$1,372,004.93	\$1,346,856.41	\$1,032,931.48	\$937,795.58
UPLIFT	\$76,905.14	\$14,532.98	\$10,818.25	\$19,695.74	\$11,212.43	\$5,173.91	\$119,329.23
RESIDUALS	(\$295,692.43)	(\$271,540.04)	(\$300,358.27)	\$776,982.89	(\$173,208.60)	(\$194,537.85)	(\$210,190.42)
ANCILLARY SERVICES	\$2,022,210.58	\$2,013,060.30	\$2,023,744.06	\$2,051,766.10	\$1,930,330.88	\$1,847,480.86	\$1,846,159.24
TCC	\$359,380.84	\$81,011.10	\$147,640.68	\$842,931.23	\$878,896.73	\$510,317.34	\$267,017.78
	10	11	12	13	14	15	16
ENERGY	\$6,343,234.57	\$6,404,233.38	\$7,032,366.84	\$9,244,797.07	\$10,954,474.96	\$6,793,197.55	\$6,078,283.59
TRANSMISSION SERVICE	\$1,041,814.69	\$1,013,343.98	\$1,103,208.11	\$1,436,461.43	\$1,520,894.63	\$983,356.35	\$927,434.46
UPLIFT	\$25,986.77	\$65,893.81	\$11,802.91	\$95,129.20	\$16,937.25	\$12,765.94	\$7,634.51
RESIDUALS	(\$176,436.82)	(\$135,397.41)	(\$155,813.76)	(\$224,331.60)	(\$303,936.31)	(\$179,742.51)	\$290,047.95
ANCILLARY SERVICES	\$1,894,984.16	\$1,881,968.69	\$1,904,667.26	\$1,942,235.83	\$1,964,172.98	\$1,841,141.83	\$1,831,080.43
TCC	\$318,763.74	\$301,103.91	\$394,932.50	\$1,011,244.22	\$915,903.99	\$207,080.41	\$220,463.68
	17	18	19	20	21	22	23
ENERGY	\$13,622,412.75	\$26,839,454.42	\$31,157,478.10	\$34,840,276.68	\$31,036,204.40	\$18,738,687.27	\$18,885,423.91
TRANSMISSION SERVICE	\$1,766,537.05	\$2,779,767.37	\$4,521,327.25	\$3,898,247.59	\$4,074,278.23	\$2,362,261.52	\$2,491,530.77
UPLIFT	\$18,053.53	\$184,089.93	\$71,039.71	\$106,111.80	\$106,875.66	\$115,765.93	\$211,534.55
RESIDUALS	(\$345,434.12)	(\$795,732.22)	(\$389,442.72)	(\$540,896.67)	(\$621,572.52)	(\$364,753.67)	(\$188,532.53)
ANCILLARY SERVICES	\$2,111,141.03	\$1,619,687.82	\$2,562,763.10	\$2,625,998.83	\$2,416,038.04	\$2,148,348.39	\$2,130,561.27
TCC	\$1,500,146.30	\$3,323,156.38	\$6,577,819.76	\$5,102,381.98	\$5,721,650.69	\$2,705,529.20	\$2,740,428.93
	24	25	26	27	28	29	30
ENERGY	\$14,759,035.04	\$13,921,838.33	\$18,701,357.27	\$11,649,436.87	\$7,411,647.86	\$8,394,683.60	\$10,818,778.37
TRANSMISSION SERVICE	\$1,752,029.19	\$1,755,280.93	\$2,603,186.62	\$1,684,314.15	\$1,119,272.06	\$1,256,459.33	\$1,880,491.85
UPLIFT	\$47,663.09	\$84,578.34	\$177,863.90	\$119,683.70	\$34,083.67	\$9,841.22	\$96,271.71
RESIDUALS	(\$381,808.78)	(\$315,836.44)	(\$311,979.44)	(\$190,036.51)	(\$183,952.32)	(\$249,056.36)	\$473,764.86
ANCILLARY SERVICES	\$2,052,095.06	\$2,048,062.99	\$2,118,659.74	\$2,011,976.41	\$1,902,627.71	\$1,950,087.43	\$2,047,243.30
TCC	\$1,160,267.73	\$1,345,798.78	\$3,202,780.72	\$1,217,669.82	\$246,881.98	\$369,044.26	\$1,189,293.53



SETTLEMENTS REPORT
 June 2024 Settlement Adjustment
 July 8, 2024

Initial Settlement Adjustment – Market Costs Analysis

	MONDAY	TUESDAY	WEDNESDAY	THURSDAY	FRIDAY	SATURDAY	SUNDAY
						1	2
ENERGY						\$5,587,748.11	\$6,313,904.50
TRANSMISSION SERVICE						\$858,762.50	\$985,806.15
UPLIFT						\$182,540.56	\$32,186.97
RESIDUALS						(\$108,287.66)	(\$150,339.03)
ANCILLARY SERVICES						\$1,811,244.80	\$1,852,024.22
TCC						\$200,885.14	\$353,062.47
	3	4	5	6	7	8	9
ENERGY	\$9,393,072.04	\$9,515,280.79	\$9,590,246.29	\$10,959,543.59	\$8,880,493.97	\$6,408,219.96	\$5,876,562.56
TRANSMISSION SERVICE	\$1,220,782.63	\$1,053,412.42	\$1,097,063.14	\$1,371,992.64	\$1,346,811.13	\$1,032,914.71	\$937,779.30
UPLIFT	\$76,905.52	\$14,532.98	\$10,818.26	\$19,695.74	\$11,212.42	\$5,173.91	\$119,329.24
RESIDUALS	(\$294,820.68)	(\$270,903.16)	(\$311,374.34)	\$777,147.77	(\$172,374.31)	(\$194,371.93)	(\$210,012.23)
ANCILLARY SERVICES	\$2,022,143.32	\$2,012,997.18	\$2,024,186.24	\$2,051,753.36	\$1,930,290.79	\$1,847,463.59	\$1,846,142.46
TCC	\$359,380.84	\$81,011.10	\$147,640.68	\$842,931.23	\$878,896.73	\$510,317.34	\$267,017.78
	10	11	12	13	14	15	16
ENERGY	\$6,343,021.17	\$6,404,038.59	\$7,032,378.84	\$9,244,191.72	\$10,951,746.05	\$6,792,949.72	\$6,078,194.92
TRANSMISSION SERVICE	\$1,041,796.49	\$1,013,327.17	\$1,103,208.48	\$1,436,421.74	\$1,520,855.57	\$983,340.04	\$927,420.57
UPLIFT	\$25,986.78	\$65,893.79	\$11,802.91	\$95,129.91	\$16,937.26	\$12,765.94	\$7,634.49
RESIDUALS	(\$176,258.38)	(\$135,206.89)	(\$155,639.64)	(\$223,927.86)	(\$301,140.10)	(\$179,494.72)	\$290,253.48
ANCILLARY SERVICES	\$1,894,965.42	\$1,881,951.39	\$1,904,667.63	\$1,942,195.00	\$1,964,138.90	\$1,841,125.04	\$1,831,066.14
TCC	\$318,763.74	\$301,103.91	\$394,932.50	\$1,011,244.22	\$915,903.99	\$207,080.41	\$220,463.68
	17	18	19	20	21	22	23
ENERGY	\$13,619,835.32	\$26,840,912.51	\$31,157,483.22	\$34,840,129.59	\$31,041,035.44	\$18,738,687.27	\$18,885,423.91
TRANSMISSION SERVICE	\$1,766,466.54	\$2,779,782.90	\$4,521,328.78	\$3,898,245.43	\$4,074,189.26	\$2,362,261.52	\$2,491,530.77
UPLIFT	\$18,053.53	\$184,117.74	\$71,039.70	\$106,111.81	\$106,812.57	\$115,765.93	\$211,534.55
RESIDUALS	(\$344,702.75)	(\$795,113.67)	(\$389,450.48)	(\$540,882.44)	(\$619,134.33)	(\$364,753.67)	(\$188,532.53)
ANCILLARY SERVICES	\$2,111,068.48	\$1,619,660.67	\$2,562,764.75	\$2,625,996.71	\$2,416,020.35	\$2,148,348.39	\$2,130,561.27
TCC	\$1,500,146.30	\$3,323,201.53	\$6,577,819.76	\$5,102,381.98	\$5,721,650.69	\$2,705,529.20	\$2,740,428.93
	24	25	26	27	28	29	30
ENERGY	\$14,759,034.13	\$13,921,832.94	\$18,701,357.27	\$11,649,436.87	\$7,411,035.82	\$8,394,683.60	\$10,818,778.37
TRANSMISSION SERVICE	\$1,752,029.19	\$1,755,280.93	\$2,603,186.62	\$1,684,314.15	\$1,119,244.97	\$1,256,459.33	\$1,880,491.85
UPLIFT	\$47,663.09	\$84,578.34	\$177,863.90	\$119,683.70	\$34,083.67	\$9,841.22	\$96,271.71
RESIDUALS	(\$381,809.97)	(\$315,835.59)	(\$311,979.44)	(\$190,036.51)	(\$183,339.90)	(\$249,056.36)	\$473,764.86
ANCILLARY SERVICES	\$2,052,095.06	\$2,048,062.99	\$2,118,659.74	\$2,011,976.41	\$1,902,605.33	\$1,950,087.43	\$2,047,243.30
TCC	\$1,160,267.73	\$1,345,798.78	\$3,202,780.72	\$1,217,669.82	\$246,881.98	\$369,044.26	\$1,189,293.53

