

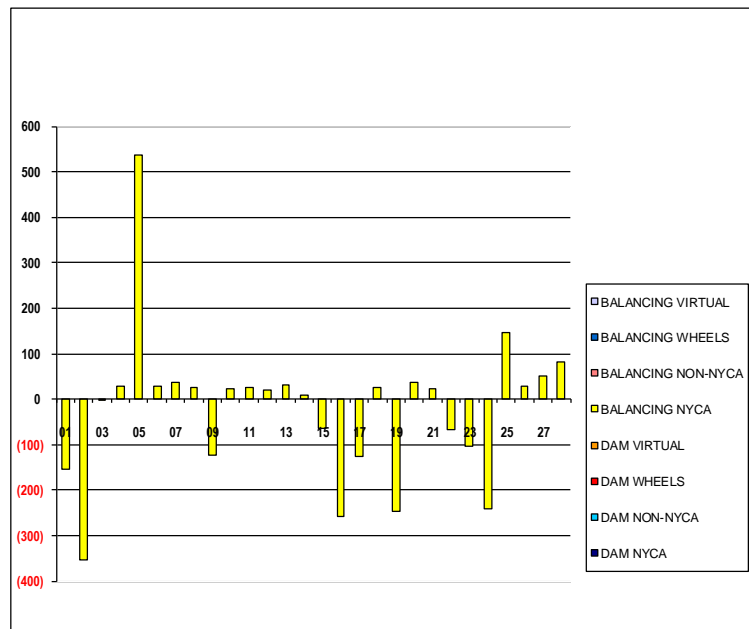
SETTLEMENTS REPORT

February 2019 Settlement Adjustment

July 8, 2019

Settlement Adjustment – Market Supply Delta Analysis

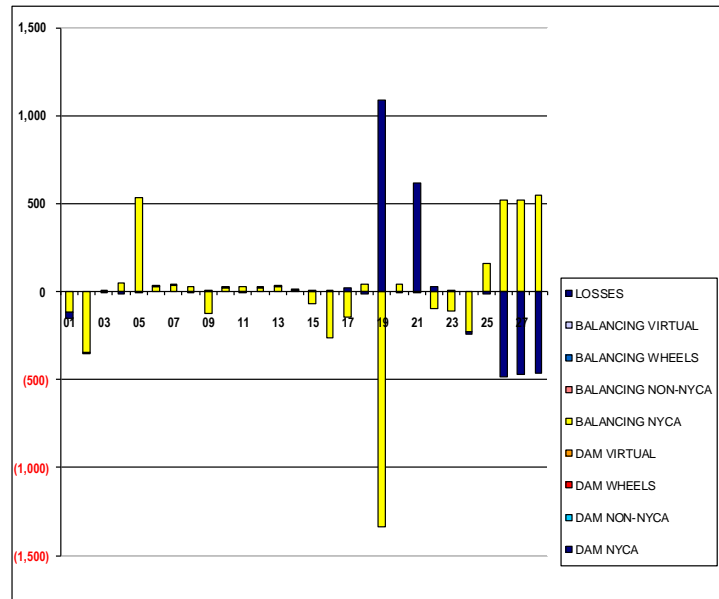
| | MONDAY | TUESDAY | WEDNESDAY | THURSDAY | FRIDAY | SATURDAY | SUNDAY |
|--------------------|--------|---------|-----------|----------|--------|----------|--------|
| | | | | | 1 | 2 | 3 |
| DAM NYCA | | | | | 0 | 0 | 0 |
| DAM NON-NYCA | | | | | 0 | 0 | 0 |
| DAM WHEELS | | | | | 0 | 0 | 0 |
| DAM VIRTUAL | | | | | 0 | 0 | 0 |
| BALANCING NYCA | | | | | (153) | (354) | (3) |
| BALANCING NON-NYCA | | | | | 0 | 0 | 0 |
| BALANCING WHEELS | | | | | 0 | 0 | 0 |
| BALANCING VIRTUAL | | | | | 0 | 0 | 0 |
| | 4 | 5 | 6 | 7 | 8 | 9 | 10 |
| DAM NYCA | 0 | 0 | 0 | 0 | 0 | 0 | 0 |
| DAM NON-NYCA | 0 | 0 | 0 | 0 | 0 | 0 | 0 |
| DAM WHEELS | 0 | 0 | 0 | 0 | 0 | 0 | 0 |
| DAM VIRTUAL | 0 | 0 | 0 | 0 | 0 | 0 | 0 |
| BALANCING NYCA | 30 | 536 | 30 | 36 | 27 | (124) | 21 |
| BALANCING NON-NYCA | 0 | 0 | 0 | 0 | 0 | 0 | 0 |
| BALANCING WHEELS | 0 | 0 | 0 | 0 | 0 | 0 | 0 |
| BALANCING VIRTUAL | 0 | 0 | 0 | 0 | 0 | 0 | 0 |
| | 11 | 12 | 13 | 14 | 15 | 16 | 17 |
| DAM NYCA | 0 | 0 | 0 | 0 | 0 | 0 | 0 |
| DAM NON-NYCA | 0 | 0 | 0 | 0 | 0 | 0 | 0 |
| DAM WHEELS | 0 | 0 | 0 | 0 | 0 | 0 | 0 |
| DAM VIRTUAL | 0 | 0 | 0 | 0 | 0 | 0 | 0 |
| BALANCING NYCA | 26 | 19 | 32 | 10 | (64) | (258) | (125) |
| BALANCING NON-NYCA | 0 | 0 | 0 | 0 | 0 | 0 | 0 |
| BALANCING WHEELS | 0 | 0 | 0 | 0 | 0 | 0 | 0 |
| BALANCING VIRTUAL | 0 | 0 | 0 | 0 | 0 | 0 | 0 |
| | 18 | 19 | 20 | 21 | 22 | 23 | 24 |
| DAM NYCA | 0 | 0 | 0 | 0 | 0 | 0 | 0 |
| DAM NON-NYCA | 0 | 0 | 0 | 0 | 0 | 0 | 0 |
| DAM WHEELS | 0 | 0 | 0 | 0 | 0 | 0 | 0 |
| DAM VIRTUAL | 0 | 0 | 0 | 0 | 0 | 0 | 0 |
| BALANCING NYCA | 25 | (246) | 36 | 24 | (66) | (103) | (241) |
| BALANCING NON-NYCA | 0 | 0 | 0 | 0 | 0 | 0 | 0 |
| BALANCING WHEELS | 0 | 0 | 0 | 0 | 0 | 0 | 0 |
| BALANCING VIRTUAL | 0 | 0 | 0 | 0 | 0 | 0 | 0 |
| | 25 | 26 | 27 | 28 | | | |
| DAM NYCA | 0 | 0 | 0 | 0 | | | |
| DAM NON-NYCA | 0 | 0 | 0 | 0 | | | |
| DAM WHEELS | 0 | 0 | 0 | 0 | | | |
| DAM VIRTUAL | 0 | 0 | 0 | 0 | | | |
| BALANCING NYCA | 145 | 29 | 50 | 81 | | | |
| BALANCING NON-NYCA | 0 | 0 | 0 | 0 | | | |
| BALANCING WHEELS | 0 | 0 | 0 | 0 | | | |
| BALANCING VIRTUAL | 0 | 0 | 0 | 0 | | | |



SETTLEMENTS REPORT
February 2019 Settlement Adjustment
July 8, 2019

Settlement Adjustment – Market Withdrawals Delta Analysis

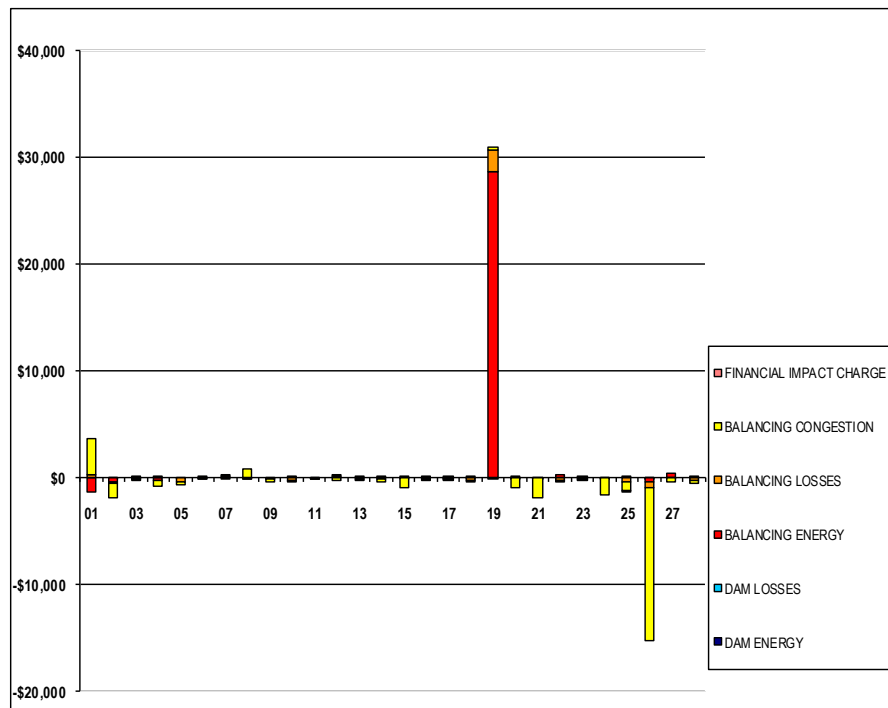
| | MONDAY | TUESDAY | WEDNESDAY | THURSDAY | FRIDAY | SATURDAY | SUNDAY |
|--------------------|--------|---------|-----------|----------|--------|----------|--------|
| | | | | | 1 | 2 | 3 |
| DAM NYCA | | | | | 0 | 0 | 0 |
| DAM NON-NYCA | | | | | 0 | 0 | 0 |
| DAM WHEELS | | | | | 0 | 0 | 0 |
| DAM VIRTUAL | | | | | 0 | 0 | 0 |
| BALANCING NYCA | | | | | (116) | (344) | 4 |
| BALANCING NON-NYCA | | | | | 0 | 0 | 0 |
| BALANCING WHEELS | | | | | 0 | 0 | 0 |
| BALANCING VIRTUAL | | | | | 0 | 0 | 0 |
| UFE/LOSSES | | | | | (37) | (10) | (7) |
| | 4 | 5 | 6 | 7 | 8 | 9 | 10 |
| DAM NYCA | 0 | 0 | 0 | 0 | 0 | 0 | 0 |
| DAM NON-NYCA | 0 | 0 | 0 | 0 | 0 | 0 | 0 |
| DAM WHEELS | 0 | 0 | 0 | 0 | 0 | 0 | 0 |
| DAM VIRTUAL | 0 | 0 | 0 | 0 | 0 | 0 | 0 |
| BALANCING NYCA | 46 | 536 | 30 | 35 | 27 | (124) | 20 |
| BALANCING NON-NYCA | 0 | 0 | 0 | 0 | 0 | 0 | 0 |
| BALANCING WHEELS | 0 | 0 | 0 | 0 | 0 | 0 | 0 |
| BALANCING VIRTUAL | 0 | 0 | 0 | 0 | 0 | 0 | 0 |
| UFE/LOSSES | (16) | (0) | 0 | 1 | (0) | 0 | 1 |
| | 11 | 12 | 13 | 14 | 15 | 16 | 17 |
| DAM NYCA | 0 | 0 | 0 | 0 | 0 | 0 | 0 |
| DAM NON-NYCA | 0 | 0 | 0 | 0 | 0 | 0 | 0 |
| DAM WHEELS | 0 | 0 | 0 | 0 | 0 | 0 | 0 |
| DAM VIRTUAL | 0 | 0 | 0 | 0 | 0 | 0 | 0 |
| BALANCING NYCA | 27 | 19 | 31 | 7 | (71) | (260) | (146) |
| BALANCING NON-NYCA | 0 | 0 | 0 | 0 | 0 | 0 | 0 |
| BALANCING WHEELS | 0 | 0 | 0 | 0 | 0 | 0 | 0 |
| BALANCING VIRTUAL | 0 | 0 | 0 | 0 | 0 | 0 | 0 |
| UFE/LOSSES | (0) | 0 | 1 | 3 | 6 | 2 | 21 |
| | 18 | 19 | 20 | 21 | 22 | 23 | 24 |
| DAM NYCA | 0 | 0 | 0 | 0 | 0 | 0 | 0 |
| DAM NON-NYCA | 0 | 0 | 0 | 0 | 0 | 0 | 0 |
| DAM WHEELS | 0 | 0 | 0 | 0 | 0 | 0 | 0 |
| DAM VIRTUAL | 0 | 0 | 0 | 0 | 0 | 0 | 0 |
| BALANCING NYCA | 42 | (1,335) | 44 | (1) | (96) | (111) | (231) |
| BALANCING NON-NYCA | 0 | 0 | 0 | 0 | 0 | 0 | 0 |
| BALANCING WHEELS | 0 | 0 | 0 | 0 | 0 | 0 | 0 |
| BALANCING VIRTUAL | 0 | 0 | 0 | 0 | 0 | 0 | 0 |
| UFE/LOSSES | (17) | 1,089 | (7) | 614 | 30 | 8 | (10) |
| | 25 | 26 | 27 | 28 | | | |
| DAM NYCA | 0 | 0 | 0 | 0 | | | |
| DAM NON-NYCA | 0 | 0 | 0 | 0 | | | |
| DAM WHEELS | 0 | 0 | 0 | 0 | | | |
| DAM VIRTUAL | 0 | 0 | 0 | 0 | | | |
| BALANCING NYCA | 162 | 517 | 519 | 547 | | | |
| BALANCING NON-NYCA | 0 | 0 | 0 | 0 | | | |
| BALANCING WHEELS | 0 | 0 | 0 | 0 | | | |
| BALANCING VIRTUAL | 0 | 0 | 0 | 0 | | | |
| UFE/LOSSES | (17) | (488) | (469) | (466) | | | |



SETTLEMENTS REPORT
February 2019 Settlement Adjustment
July 8, 2019

Settlement Adjustment – Market Residuals Delta Analysis

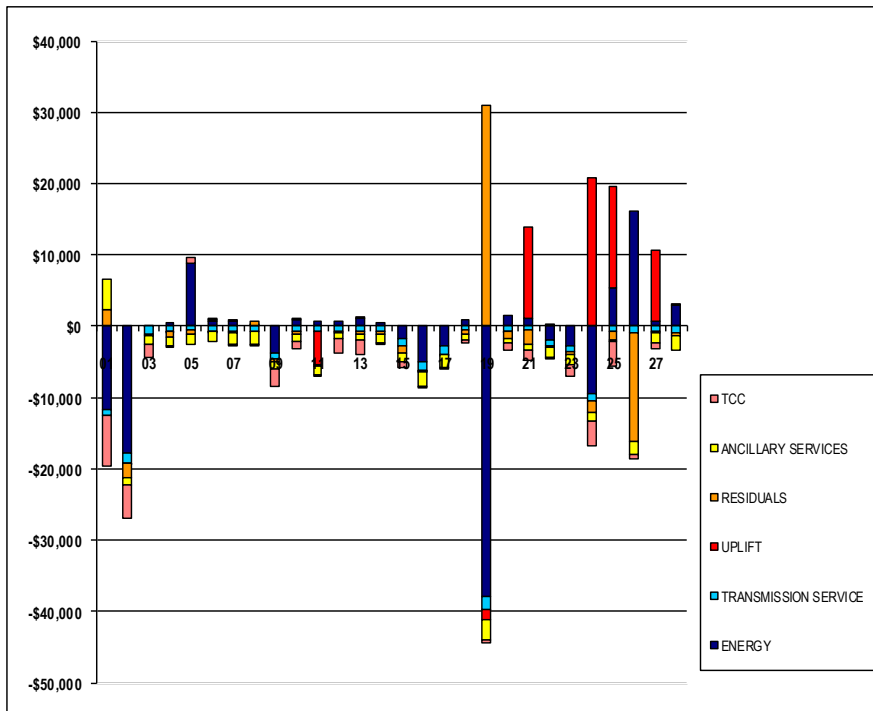
| | MONDAY | TUESDAY | WEDNESDAY | THURSDAY | FRIDAY | SATURDAY | SUNDAY |
|-------------------------|------------|---------------|------------|--------------|--------------|--------------|--------------|
| | | | | | 1 | 2 | 3 |
| DAM ENERGY | | | | | \$0.00 | (\$0.01) | \$0.00 |
| DAM LOSSES | | | | | \$0.00 | (\$0.01) | (\$0.01) |
| BALANCING ENERGY | | | | | (\$1,355.70) | (\$466.06) | (\$144.84) |
| BALANCING LOSSES | | | | | \$223.07 | (\$111.72) | \$19.55 |
| BALANCING CONGESTION | | | | | \$3,350.33 | (\$1,350.99) | (\$213.74) |
| FINANCIAL IMPACT CHARGE | | | | | \$0.00 | \$0.00 | \$0.00 |
| | 4 | 5 | 6 | 7 | 8 | 9 | 10 |
| DAM ENERGY | \$0.00 | \$0.00 | \$0.00 | \$0.00 | \$0.00 | \$0.00 | \$0.00 |
| DAM LOSSES | \$0.01 | \$0.00 | \$0.00 | \$0.00 | \$0.00 | \$0.00 | \$0.00 |
| BALANCING ENERGY | (\$357.59) | (\$3.39) | (\$3.83) | \$14.56 | (\$27.84) | (\$0.40) | \$19.94 |
| BALANCING LOSSES | \$89.40 | (\$430.80) | \$88.50 | \$68.32 | (\$195.39) | (\$218.07) | (\$343.54) |
| BALANCING CONGESTION | (\$530.82) | (\$242.78) | (\$0.99) | (\$238.96) | \$727.83 | (\$220.62) | (\$19.17) |
| FINANCIAL IMPACT CHARGE | \$0.00 | \$0.00 | \$0.00 | \$0.00 | \$0.00 | \$0.00 | \$0.00 |
| | 11 | 12 | 13 | 14 | 15 | 16 | 17 |
| DAM ENERGY | \$0.00 | \$0.01 | \$0.01 | \$0.00 | \$0.00 | (\$0.01) | \$0.00 |
| DAM LOSSES | \$0.00 | \$0.00 | \$0.00 | \$0.00 | \$0.00 | \$0.00 | (\$0.01) |
| BALANCING ENERGY | (\$1.55) | \$0.97 | \$15.92 | \$59.56 | \$96.67 | \$36.92 | \$53.26 |
| BALANCING LOSSES | (\$83.55) | \$42.95 | (\$147.14) | (\$180.52) | (\$132.01) | (\$233.70) | (\$181.33) |
| BALANCING CONGESTION | (\$18.58) | (\$288.88) | (\$189.35) | (\$328.70) | (\$933.93) | (\$89.54) | (\$0.75) |
| FINANCIAL IMPACT CHARGE | \$0.00 | \$0.00 | \$0.00 | \$0.00 | \$0.00 | \$0.00 | \$0.00 |
| | 18 | 19 | 20 | 21 | 22 | 23 | 24 |
| DAM ENERGY | \$0.00 | \$0.00 | \$0.00 | \$0.00 | \$0.00 | \$0.01 | \$0.00 |
| DAM LOSSES | (\$0.01) | (\$0.01) | (\$0.01) | \$0.00 | \$0.00 | \$0.00 | \$0.00 |
| BALANCING ENERGY | \$31.55 | \$28,557.13 | \$5.48 | (\$2.19) | \$220.56 | \$108.27 | (\$3.64) |
| BALANCING LOSSES | (\$289.47) | \$2,018.47 | (\$122.39) | (\$70.78) | (\$316.69) | (\$183.72) | (\$34.16) |
| BALANCING CONGESTION | (\$223.02) | \$359.80 | (\$900.59) | (\$1,861.02) | (\$133.25) | (\$203.23) | (\$1,589.77) |
| FINANCIAL IMPACT CHARGE | \$0.00 | \$0.00 | \$0.00 | \$0.00 | \$0.00 | \$0.00 | \$0.00 |
| | 25 | 26 | 27 | 28 | | | |
| DAM ENERGY | \$0.00 | (\$0.01) | \$0.00 | \$0.00 | | | |
| DAM LOSSES | \$0.01 | (\$0.01) | (\$0.01) | \$0.00 | | | |
| BALANCING ENERGY | \$31.33 | (\$513.94) | \$344.97 | \$48.97 | | | |
| BALANCING LOSSES | (\$515.69) | (\$555.44) | (\$63.64) | (\$379.12) | | | |
| BALANCING CONGESTION | (\$788.55) | (\$14,275.36) | (\$469.29) | (\$233.33) | | | |
| FINANCIAL IMPACT CHARGE | (\$0.04) | \$0.00 | \$0.00 | \$0.00 | | | |



SETTLEMENTS REPORT
February 2019 Settlement Adjustment
July 8, 2019

Settlement Adjustment – Market Costs Delta Analysis

| | MONDAY | TUESDAY | WEDNESDAY | THURSDAY | FRIDAY | SATURDAY | SUNDAY |
|----------------------|--------------|---------------|--------------|--------------|---------------|---------------|--------------|
| | | | | | 1 | 2 | 3 |
| ENERGY | | | | | (\$11,617.58) | (\$17,899.50) | (\$17.60) |
| TRANSMISSION SERVICE | | | | | (\$869.26) | (\$1,347.53) | (\$1,028.42) |
| UPLIFT | | | | | \$0.00 | (\$3.01) | \$0.00 |
| RESIDUALS | | | | | \$2,217.70 | (\$1,928.79) | (\$339.04) |
| ANCILLARY SERVICES | | | | | \$4,264.47 | (\$1,000.42) | (\$1,161.12) |
| TCC | | | | | (\$7,211.71) | (\$4,741.78) | (\$1,755.99) |
| | 4 | 5 | 6 | 7 | 8 | 9 | 10 |
| ENERGY | \$586.28 | \$8,891.34 | \$723.57 | \$741.52 | \$93.45 | (\$3,719.82) | \$826.22 |
| TRANSMISSION SERVICE | (\$802.25) | (\$467.41) | (\$828.18) | (\$799.60) | (\$699.71) | (\$889.11) | (\$787.31) |
| UPLIFT | (\$21.28) | \$0.01 | (\$0.02) | \$0.01 | \$0.00 | \$0.01 | \$0.01 |
| RESIDUALS | (\$799.00) | (\$676.97) | \$83.68 | (\$156.08) | \$504.60 | (\$439.09) | (\$342.77) |
| ANCILLARY SERVICES | (\$1,239.69) | (\$1,318.22) | (\$1,303.25) | (\$1,615.40) | (\$1,862.75) | (\$968.83) | (\$1,022.94) |
| TCC | (\$204.25) | \$711.60 | \$16.40 | (\$7.66) | (\$139.06) | (\$2,389.22) | (\$1,115.28) |
| | 11 | 12 | 13 | 14 | 15 | 16 | 17 |
| ENERGY | \$746.62 | \$777.33 | \$1,152.17 | \$462.03 | (\$1,824.35) | (\$5,045.30) | (\$2,721.02) |
| TRANSMISSION SERVICE | (\$823.77) | (\$764.70) | (\$730.75) | (\$724.47) | (\$887.58) | (\$1,182.14) | (\$1,163.76) |
| UPLIFT | (\$4,648.23) | \$0.00 | \$0.01 | \$0.00 | \$0.00 | (\$0.01) | \$0.00 |
| RESIDUALS | (\$103.68) | (\$244.95) | (\$320.56) | (\$449.66) | (\$969.27) | (\$286.33) | (\$128.83) |
| ANCILLARY SERVICES | (\$1,267.74) | (\$804.97) | (\$818.02) | (\$1,120.91) | (\$1,253.99) | (\$1,899.32) | (\$1,835.06) |
| TCC | (\$277.13) | (\$1,965.78) | (\$2,146.24) | (\$104.91) | (\$783.21) | (\$283.94) | (\$92.15) |
| | 18 | 19 | 20 | 21 | 22 | 23 | 24 |
| ENERGY | \$979.82 | (\$37,973.36) | \$1,521.00 | \$1,026.09 | (\$1,960.29) | (\$2,708.38) | (\$9,536.79) |
| TRANSMISSION SERVICE | (\$621.97) | (\$1,668.30) | (\$635.99) | (\$592.35) | (\$856.75) | (\$937.51) | (\$954.30) |
| UPLIFT | \$0.01 | (\$1,428.93) | (\$0.03) | \$12,874.08 | \$0.03 | \$0.00 | \$20,754.41 |
| RESIDUALS | (\$480.95) | \$30,935.39 | (\$1,017.51) | (\$1,933.99) | (\$229.38) | (\$278.67) | (\$1,627.57) |
| ANCILLARY SERVICES | (\$882.19) | (\$2,939.56) | (\$795.50) | (\$938.66) | (\$1,308.13) | (\$1,422.53) | (\$1,130.36) |
| TCC | (\$323.92) | (\$366.23) | (\$996.96) | (\$1,340.88) | (\$333.98) | (\$1,658.77) | (\$3,487.18) |
| | 25 | 26 | 27 | 28 | | | |
| ENERGY | \$5,291.59 | \$16,106.18 | \$704.87 | \$3,024.04 | | | |
| TRANSMISSION SERVICE | (\$636.54) | (\$840.98) | (\$702.62) | (\$850.41) | | | |
| UPLIFT | \$14,293.45 | \$0.00 | \$9,936.93 | \$0.01 | | | |
| RESIDUALS | (\$1,272.94) | (\$15,344.76) | (\$187.97) | (\$563.48) | | | |
| ANCILLARY SERVICES | (\$192.71) | (\$1,808.78) | (\$1,380.74) | (\$1,892.09) | | | |
| TCC | (\$3,593.01) | (\$553.73) | (\$914.18) | \$173.45 | | | |



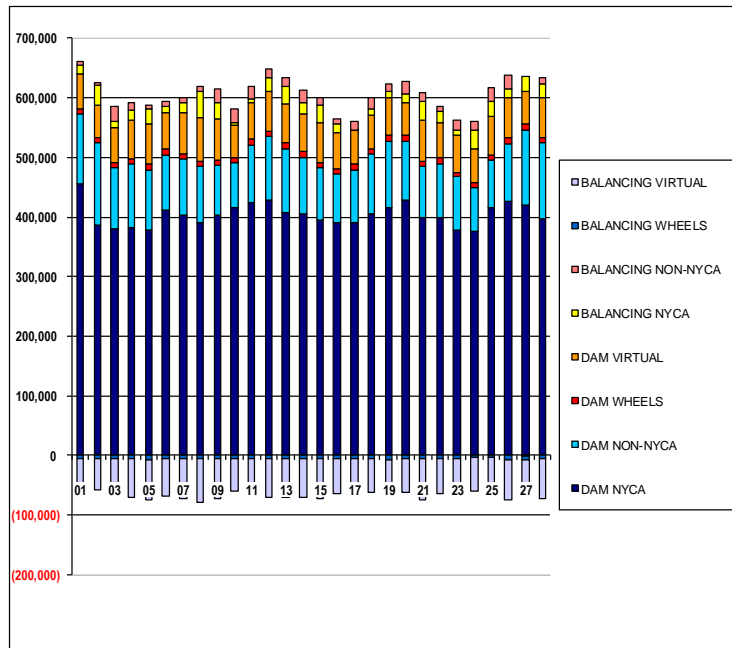
SETTLEMENTS REPORT

February 2019 Settlement Adjustment

July 8, 2019

Initial Settlement – Market Supply Analysis

| | MONDAY | TUESDAY | WEDNESDAY | THURSDAY | FRIDAY | SATURDAY | SUNDAY |
|--------------------|----------|----------|-----------|----------|----------|----------|----------|
| | | | | | 1 | 2 | 3 |
| DAM NYCA | | | | | 456,205 | 385,925 | 380,687 |
| DAM NON-NYCA | | | | | 116,540 | 138,640 | 101,909 |
| DAM WHEELS | | | | | 7,912 | 8,764 | 8,374 |
| DAM VIRTUAL | | | | | 58,973 | 53,478 | 59,282 |
| BALANCING NYCA | | | | | 14,574 | 34,523 | 9,713 |
| BALANCING NON-NYCA | | | | | 7,267 | 4,384 | 24,769 |
| BALANCING WHEELS | | | | | (4,312) | (5,164) | (4,774) |
| BALANCING VIRTUAL | | | | | (58,973) | (53,478) | (59,282) |
| | 4 | 5 | 6 | 7 | 8 | 9 | 10 |
| DAM NYCA | 381,966 | 377,636 | 410,761 | 403,494 | 391,698 | 403,150 | 415,494 |
| DAM NON-NYCA | 106,438 | 101,706 | 93,436 | 94,632 | 93,425 | 84,722 | 75,458 |
| DAM WHEELS | 8,534 | 10,319 | 9,832 | 8,675 | 9,000 | 8,666 | 8,373 |
| DAM VIRTUAL | 65,494 | 67,362 | 61,585 | 67,821 | 73,540 | 67,239 | 55,622 |
| BALANCING NYCA | 17,064 | 25,343 | 10,855 | 16,467 | 43,451 | 28,160 | 2,826 |
| BALANCING NON-NYCA | 12,272 | 6,354 | 7,650 | 8,834 | 8,231 | 23,272 | 23,460 |
| BALANCING WHEELS | (4,934) | (6,719) | (6,232) | (5,075) | (5,400) | (5,066) | (5,073) |
| BALANCING VIRTUAL | (65,494) | (67,362) | (61,585) | (67,821) | (73,540) | (67,239) | (55,622) |
| | 11 | 12 | 13 | 14 | 15 | 16 | 17 |
| DAM NYCA | 424,313 | 428,696 | 407,842 | 406,450 | 393,955 | 390,227 | 390,174 |
| DAM NON-NYCA | 96,982 | 107,119 | 107,570 | 93,905 | 88,741 | 83,060 | 89,427 |
| DAM WHEELS | 8,965 | 8,586 | 9,591 | 10,008 | 9,330 | 8,614 | 9,645 |
| DAM VIRTUAL | 62,513 | 65,624 | 64,892 | 63,469 | 65,895 | 59,023 | 56,038 |
| BALANCING NYCA | 5,704 | 24,665 | 29,305 | 18,797 | 29,988 | 14,947 | 1,427 |
| BALANCING NON-NYCA | 21,196 | 14,195 | 14,143 | 19,754 | 11,942 | 9,212 | 13,580 |
| BALANCING WHEELS | (5,245) | (4,866) | (5,991) | (6,288) | (5,610) | (4,774) | (5,805) |
| BALANCING VIRTUAL | (62,513) | (65,624) | (64,892) | (63,469) | (65,895) | (59,023) | (56,038) |
| | 18 | 19 | 20 | 21 | 22 | 23 | 24 |
| DAM NYCA | 406,078 | 415,212 | 427,935 | 399,646 | 399,929 | 377,304 | 376,481 |
| DAM NON-NYCA | 99,122 | 112,186 | 98,864 | 85,208 | 90,205 | 90,099 | 73,270 |
| DAM WHEELS | 9,195 | 10,824 | 9,878 | 8,109 | 9,918 | 8,214 | 7,757 |
| DAM VIRTUAL | 55,912 | 61,798 | 54,725 | 69,750 | 58,521 | 60,872 | 56,687 |
| BALANCING NYCA | 11,273 | 11,017 | 15,210 | 31,970 | 18,632 | 9,656 | 30,702 |
| BALANCING NON-NYCA | 18,442 | 13,422 | 20,394 | 14,027 | 7,861 | 16,752 | 15,943 |
| BALANCING WHEELS | (5,475) | (7,104) | (6,158) | (4,389) | (6,198) | (4,494) | (4,037) |
| BALANCING VIRTUAL | (55,912) | (61,798) | (54,725) | (69,750) | (58,521) | (60,872) | (56,687) |
| | 25 | 26 | 27 | 28 | 29 | 30 | 31 |
| DAM NYCA | 415,743 | 425,441 | 419,169 | 397,707 | | | |
| DAM NON-NYCA | 80,806 | 97,802 | 127,633 | 126,930 | | | |
| DAM WHEELS | 7,678 | 10,381 | 10,059 | 9,409 | | | |
| DAM VIRTUAL | 64,426 | 66,902 | 54,776 | 66,273 | | | |
| BALANCING NYCA | 24,945 | 15,065 | 24,125 | 23,780 | | | |
| BALANCING NON-NYCA | 23,841 | 22,498 | (628) | 9,472 | | | |
| BALANCING WHEELS | (3,958) | (6,661) | (6,459) | (5,809) | | | |
| BALANCING VIRTUAL | (64,426) | (66,902) | (54,776) | (66,273) | | | |



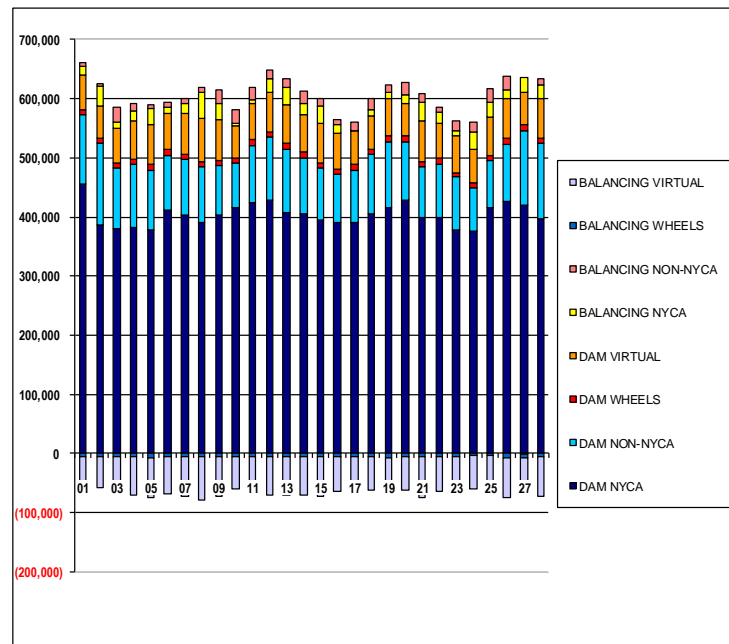
SETTLEMENTS REPORT

February 2019 Settlement Adjustment

July 8, 2019

4-Month Settlement Adjustment – Market Supply Analysis

| | MONDAY | TUESDAY | WEDNESDAY | THURSDAY | FRIDAY | SATURDAY | SUNDAY |
|--------------------|----------|----------|-----------|----------|----------|----------|----------|
| | | | | | 1 | 2 | 3 |
| DAM NYCA | | | | | 456,205 | 385,925 | 380,687 |
| DAM NON-NYCA | | | | | 116,540 | 138,640 | 101,909 |
| DAM WHEELS | | | | | 7,912 | 8,764 | 8,374 |
| DAM VIRTUAL | | | | | 58,973 | 53,478 | 59,282 |
| BALANCING NYCA | | | | | 14,421 | 34,169 | 9,710 |
| BALANCING NON-NYCA | | | | | 7,267 | 4,384 | 24,769 |
| BALANCING WHEELS | | | | | (4,312) | (5,164) | (4,774) |
| BALANCING VIRTUAL | | | | | (58,973) | (53,478) | (59,282) |
| | 4 | 5 | 6 | 7 | 8 | 9 | 10 |
| DAM NYCA | 381,966 | 377,636 | 410,761 | 403,494 | 391,698 | 403,150 | 415,494 |
| DAM NON-NYCA | 106,438 | 101,706 | 93,436 | 94,632 | 93,425 | 84,722 | 75,458 |
| DAM WHEELS | 8,534 | 10,319 | 9,832 | 8,675 | 9,000 | 8,666 | 8,673 |
| DAM VIRTUAL | 65,494 | 67,362 | 61,585 | 67,821 | 73,540 | 67,239 | 55,622 |
| BALANCING NYCA | 17,084 | 25,879 | 10,884 | 16,503 | 43,478 | 28,036 | 2,847 |
| BALANCING NON-NYCA | 12,272 | 6,354 | 7,650 | 8,834 | 8,231 | 23,272 | 23,460 |
| BALANCING WHEELS | (4,934) | (6,719) | (6,232) | (5,075) | (5,400) | (5,066) | (5,073) |
| BALANCING VIRTUAL | (65,494) | (67,362) | (61,585) | (67,821) | (73,540) | (67,239) | (55,622) |
| | 11 | 12 | 13 | 14 | 15 | 16 | 17 |
| DAM NYCA | 424,313 | 428,696 | 407,842 | 406,450 | 393,955 | 390,227 | 390,174 |
| DAM NON-NYCA | 96,382 | 107,119 | 107,570 | 93,905 | 88,741 | 83,050 | 89,427 |
| DAM WHEELS | 8,965 | 8,586 | 9,591 | 10,008 | 9,330 | 8,614 | 9,645 |
| DAM VIRTUAL | 62,513 | 65,624 | 64,892 | 63,469 | 65,895 | 59,023 | 56,038 |
| BALANCING NYCA | 5,731 | 24,685 | 29,337 | 18,807 | 29,924 | 14,689 | 1,302 |
| BALANCING NON-NYCA | 21,196 | 14,195 | 14,143 | 19,754 | 11,942 | 9,212 | 13,580 |
| BALANCING WHEELS | (5,245) | (4,866) | (5,991) | (6,288) | (5,610) | (4,774) | (5,805) |
| BALANCING VIRTUAL | (62,513) | (65,624) | (64,892) | (63,469) | (65,895) | (59,023) | (56,038) |
| | 18 | 19 | 20 | 21 | 22 | 23 | 24 |
| DAM NYCA | 406,078 | 415,212 | 427,935 | 399,646 | 399,929 | 377,304 | 376,481 |
| DAM NON-NYCA | 99,122 | 112,186 | 98,864 | 85,208 | 90,205 | 90,099 | 73,270 |
| DAM WHEELS | 9,195 | 10,824 | 9,878 | 8,109 | 9,918 | 8,214 | 7,757 |
| DAM VIRTUAL | 55,912 | 61,798 | 54,725 | 69,750 | 58,521 | 60,872 | 56,687 |
| BALANCING NYCA | 11,298 | 10,772 | 15,246 | 31,994 | 18,565 | 9,553 | 30,461 |
| BALANCING NON-NYCA | 18,442 | 13,422 | 20,394 | 14,027 | 7,861 | 16,752 | 15,943 |
| BALANCING WHEELS | (5,475) | (7,104) | (6,158) | (4,389) | (6,198) | (4,494) | (4,037) |
| BALANCING VIRTUAL | (55,912) | (61,798) | (54,725) | (69,750) | (58,521) | (60,872) | (56,687) |
| | 25 | 26 | 27 | 28 | 29 | 30 | 31 |
| DAM NYCA | 415,743 | 425,441 | 419,169 | 397,707 | | | |
| DAM NON-NYCA | 80,806 | 97,802 | 127,633 | 126,930 | | | |
| DAM WHEELS | 7,678 | 10,381 | 10,059 | 9,409 | | | |
| DAM VIRTUAL | 64,426 | 66,902 | 54,776 | 66,273 | | | |
| BALANCING NYCA | 25,090 | 15,094 | 24,175 | 23,861 | | | |
| BALANCING NON-NYCA | 23,841 | 22,498 | (628) | 9,472 | | | |
| BALANCING WHEELS | (3,958) | (6,661) | (6,459) | (5,809) | | | |
| BALANCING VIRTUAL | (64,426) | (66,902) | (54,776) | (66,273) | | | |



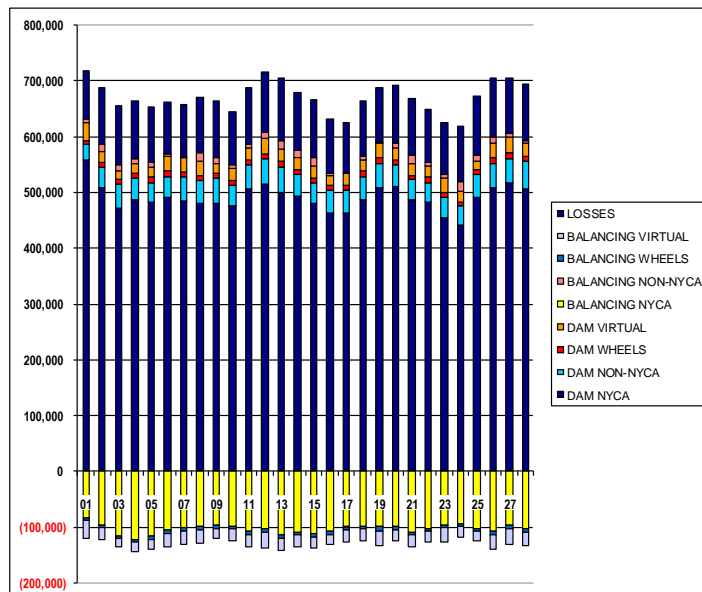
SETTLEMENTS REPORT

February 2019 Settlement Adjustment

July 8, 2019

Initial Settlement – Market Withdrawals Analysis

| | MONDAY | TUESDAY | WEDNESDAY | THURSDAY | FRIDAY | SATURDAY | SUNDAY |
|--------------------|-----------|-----------|-----------|-----------|-----------|-----------|-----------|
| | | | | | 1 | 2 | 3 |
| DAM NYCA | | | | | 558,983 | 507,884 | 471,458 |
| DAM NON-NYCA | | | | | 26,420 | 37,139 | 44,639 |
| DAM WHEELS | | | | | 7,912 | 8,764 | 8,374 |
| DAM VIRTUAL | | | | | 31,836 | 20,643 | 14,786 |
| BALANCING NYCA | | | | | (84,231) | (95,723) | (115,403) |
| BALANCING NON-NYCA | | | | | 5,640 | 11,297 | 9,828 |
| BALANCING WHEELS | | | | | (4,312) | (5,164) | (4,774) |
| BALANCING VIRTUAL | | | | | (31,836) | (20,643) | (14,786) |
| UFE/LOSSES | | | | | 87,774 | 102,875 | 106,555 |
| | 4 | 5 | 6 | 7 | 8 | 9 | 10 |
| DAM NYCA | 487,773 | 481,798 | 491,111 | 484,413 | 480,567 | 480,636 | 475,163 |
| DAM NON-NYCA | 38,611 | 36,238 | 37,118 | 44,183 | 41,090 | 44,426 | 37,587 |
| DAM WHEELS | 8,534 | 10,319 | 9,832 | 8,675 | 9,000 | 8,666 | 8,673 |
| DAM VIRTUAL | 15,970 | 17,229 | 25,821 | 24,732 | 24,749 | 18,429 | 22,006 |
| BALANCING NYCA | (122,982) | (115,135) | (104,534) | (101,563) | (99,630) | (97,180) | (97,886) |
| BALANCING NON-NYCA | 10,470 | 9,299 | 5,399 | 21 | 15,759 | 9,554 | 5,901 |
| BALANCING WHEELS | (4,934) | (6,719) | (6,232) | (5,075) | (5,400) | (5,066) | (5,073) |
| BALANCING VIRTUAL | (15,970) | (17,229) | (25,821) | (24,732) | (24,749) | (18,429) | (22,006) |
| UFE/LOSSES | 103,858 | 98,839 | 93,607 | 96,373 | 99,020 | 101,868 | 96,473 |
| | 11 | 12 | 13 | 14 | 15 | 16 | 17 |
| DAM NYCA | 507,141 | 515,421 | 500,488 | 493,586 | 481,009 | 462,192 | 464,198 |
| DAM NON-NYCA | 42,190 | 44,487 | 45,105 | 38,070 | 35,163 | 41,989 | 40,089 |
| DAM WHEELS | 8,965 | 8,586 | 9,591 | 10,008 | 9,330 | 8,614 | 9,645 |
| DAM VIRTUAL | 22,560 | 28,794 | 22,861 | 20,808 | 21,030 | 16,979 | 20,756 |
| BALANCING NYCA | (108,100) | (104,013) | (113,390) | (108,590) | (111,585) | (108,367) | (99,737) |
| BALANCING NON-NYCA | 5,433 | 11,050 | 13,812 | 12,157 | 16,698 | 4,092 | (596) |
| BALANCING WHEELS | (5,245) | (4,866) | (5,991) | (6,288) | (5,610) | (4,774) | (5,805) |
| BALANCING VIRTUAL | (22,560) | (28,794) | (22,861) | (20,808) | (21,030) | (16,979) | (20,756) |
| UFE/LOSSES | 101,531 | 107,730 | 112,845 | 103,683 | 103,343 | 97,530 | 90,655 |
| | 18 | 19 | 20 | 21 | 22 | 23 | 24 |
| DAM NYCA | 486,424 | 507,763 | 510,052 | 486,015 | 481,675 | 454,990 | 441,027 |
| DAM NON-NYCA | 42,393 | 43,385 | 38,965 | 36,657 | 36,258 | 36,298 | 34,355 |
| DAM WHEELS | 9,195 | 10,824 | 9,878 | 8,109 | 9,918 | 8,214 | 7,757 |
| DAM VIRTUAL | 21,251 | 26,412 | 20,869 | 20,390 | 19,280 | 26,262 | 19,637 |
| BALANCING NYCA | (98,322) | (99,592) | (98,083) | (110,236) | (102,168) | (96,704) | (94,670) |
| BALANCING NON-NYCA | 4,962 | 2,784 | 9,112 | 16,001 | 7,348 | 5,696 | 15,620 |
| BALANCING WHEELS | (5,475) | (7,104) | (6,158) | (4,389) | (6,198) | (4,494) | (4,037) |
| BALANCING VIRTUAL | (21,251) | (26,412) | (20,869) | (20,390) | (19,280) | (26,262) | (19,637) |
| UFE/LOSSES | 99,458 | 97,498 | 102,358 | 102,414 | 93,513 | 93,630 | 100,065 |
| | 25 | 26 | 27 | 28 | 29 | 30 | 31 |
| DAM NYCA | 491,242 | 507,913 | 517,662 | 506,514 | | | |
| DAM NON-NYCA | 41,159 | 43,736 | 43,059 | 48,792 | | | |
| DAM WHEELS | 7,678 | 10,381 | 10,059 | 9,409 | | | |
| DAM VIRTUAL | 16,396 | 26,646 | 28,269 | 23,891 | | | |
| BALANCING NYCA | (103,889) | (106,656) | (96,912) | (103,714) | | | |
| BALANCING NON-NYCA | 11,401 | 11,078 | 7,280 | 5,129 | | | |
| BALANCING WHEELS | (3,958) | (6,661) | (6,459) | (5,809) | | | |
| BALANCING VIRTUAL | (16,396) | (26,646) | (28,269) | (23,891) | | | |
| UFE/LOSSES | 105,422 | 104,735 | 99,211 | 101,167 | | | |



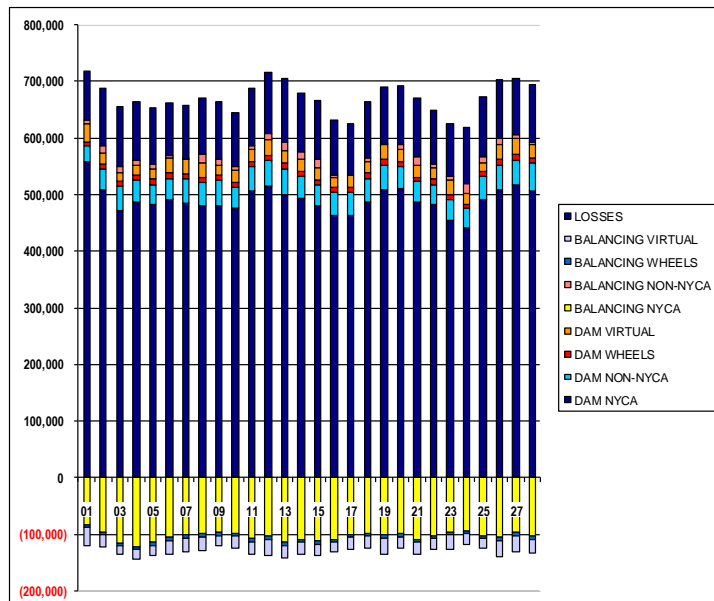
SETTLEMENTS REPORT

February 2019 Settlement Adjustment

July 8, 2019

4-Month Settlement Adjustment – Market Withdrawals Analysis

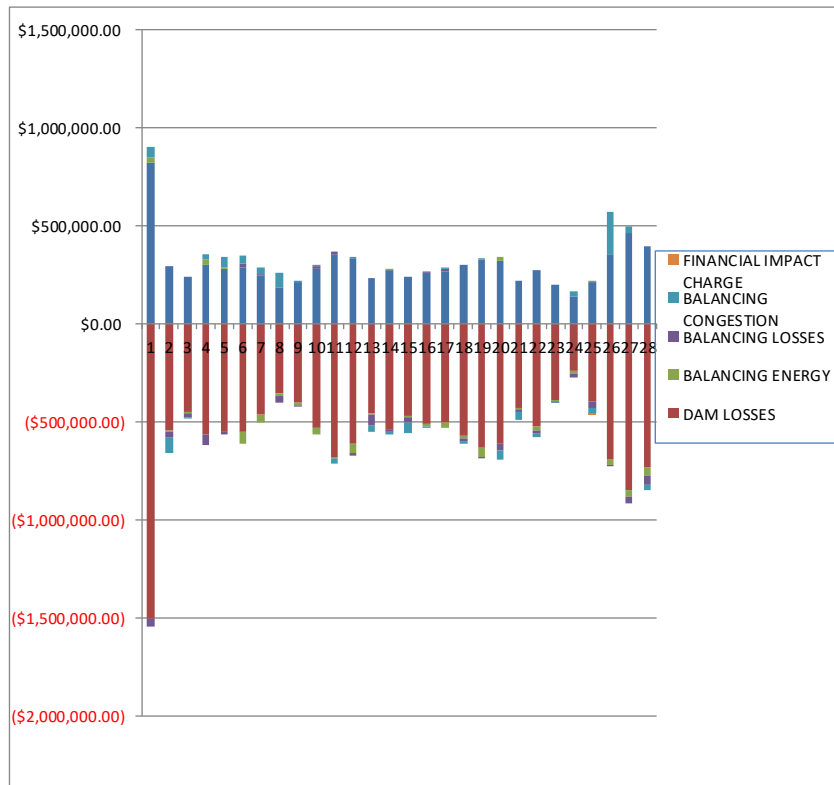
| | MONDAY | TUESDAY | WEDNESDAY | THURSDAY | FRIDAY | SATURDAY | SUNDAY |
|--------------------|-----------|-----------|-----------|-----------|-----------|-----------|-----------|
| | | | | | 1 | 2 | 3 |
| DAM NYCA | | | | | 558,983 | 507,884 | 471,458 |
| DAM NON-NYCA | | | | | 26,420 | 37,139 | 44,639 |
| DAM WHEELS | | | | | 7,912 | 8,764 | 8,374 |
| DAM VIRTUAL | | | | | 31,836 | 20,643 | 14,786 |
| BALANCING NYCA | | | | | (84,347) | (96,067) | (115,398) |
| BALANCING NON-NYCA | | | | | 5,640 | 11,297 | 9,828 |
| BALANCING WHEELS | | | | | (4,312) | (5,164) | (4,774) |
| BALANCING VIRTUAL | | | | | (31,836) | (20,643) | (14,786) |
| UFE/LOSSES | | | | | 87,737 | 102,865 | 106,548 |
| | 4 | 5 | 6 | 7 | 8 | 9 | 10 |
| DAM NYCA | 487,773 | 481,798 | 491,111 | 484,413 | 480,567 | 480,636 | 475,163 |
| DAM NON-NYCA | 38,611 | 36,238 | 37,118 | 44,183 | 41,090 | 44,426 | 37,587 |
| DAM WHEELS | 8,534 | 10,319 | 9,832 | 8,675 | 9,000 | 8,666 | 8,673 |
| DAM VIRTUAL | 15,970 | 17,229 | 25,821 | 24,732 | 24,749 | 18,429 | 22,006 |
| BALANCING NYCA | (122,936) | (114,599) | (104,505) | (101,528) | (99,603) | (97,304) | (97,866) |
| BALANCING NON-NYCA | 10,470 | 9,299 | 5,399 | 21 | 15,759 | 9,554 | 5,901 |
| BALANCING WHEELS | (4,934) | (6,719) | (6,232) | (5,075) | (5,400) | (5,066) | (5,073) |
| BALANCING VIRTUAL | (15,970) | (17,229) | (25,821) | (24,732) | (24,749) | (18,429) | (22,006) |
| UFE/LOSSES | 103,842 | 98,839 | 93,607 | 96,374 | 99,019 | 101,868 | 96,474 |
| | 11 | 12 | 13 | 14 | 15 | 16 | 17 |
| DAM NYCA | 507,141 | 515,421 | 500,488 | 493,586 | 481,009 | 462,192 | 464,198 |
| DAM NON-NYCA | 42,190 | 44,487 | 45,105 | 38,070 | 35,163 | 41,989 | 40,089 |
| DAM WHEELS | 8,965 | 8,586 | 9,591 | 10,008 | 9,330 | 8,614 | 9,645 |
| DAM VIRTUAL | 22,560 | 28,794 | 22,861 | 20,808 | 21,030 | 16,979 | 20,756 |
| BALANCING NYCA | (108,073) | (103,994) | (113,359) | (108,583) | (111,656) | (108,627) | (99,884) |
| BALANCING NON-NYCA | 5,433 | 11,050 | 13,812 | 12,157 | 16,698 | 4,092 | (596) |
| BALANCING WHEELS | (5,245) | (4,866) | (5,991) | (6,288) | (5,610) | (4,774) | (5,805) |
| BALANCING VIRTUAL | (22,560) | (28,794) | (22,861) | (20,808) | (21,030) | (16,979) | (20,756) |
| UFE/LOSSES | 101,531 | 107,730 | 112,846 | 103,686 | 103,349 | 97,532 | 90,676 |
| | 18 | 19 | 20 | 21 | 22 | 23 | 24 |
| DAM NYCA | 486,424 | 507,763 | 510,052 | 486,015 | 481,675 | 454,990 | 441,027 |
| DAM NON-NYCA | 42,393 | 43,385 | 38,965 | 36,657 | 36,258 | 36,298 | 34,355 |
| DAM WHEELS | 9,195 | 10,824 | 9,878 | 8,109 | 9,918 | 8,214 | 7,757 |
| DAM VIRTUAL | 21,251 | 26,412 | 20,869 | 20,390 | 19,280 | 26,262 | 19,637 |
| BALANCING NYCA | (98,279) | (100,927) | (98,039) | (110,237) | (102,264) | (96,815) | (94,902) |
| BALANCING NON-NYCA | 4,962 | 2,784 | 9,112 | 16,001 | 7,348 | 5,596 | 15,620 |
| BALANCING WHEELS | (5,475) | (7,104) | (6,158) | (4,389) | (6,198) | (4,494) | (4,037) |
| BALANCING VIRTUAL | (21,251) | (26,412) | (20,869) | (20,390) | (19,280) | (26,262) | (19,637) |
| UFE/LOSSES | 99,441 | 98,587 | 102,350 | 103,028 | 93,543 | 93,638 | 100,055 |
| | 25 | 26 | 27 | 28 | 29 | 30 | 31 |
| DAM NYCA | 491,242 | 507,913 | 517,662 | 506,514 | | | |
| DAM NON-NYCA | 41,159 | 43,736 | 43,059 | 48,792 | | | |
| DAM WHEELS | 7,678 | 10,381 | 10,059 | 9,409 | | | |
| DAM VIRTUAL | 16,396 | 26,646 | 28,269 | 23,891 | | | |
| BALANCING NYCA | (103,727) | (106,138) | (96,394) | (103,167) | | | |
| BALANCING NON-NYCA | 11,401 | 11,078 | 7,280 | 5,129 | | | |
| BALANCING WHEELS | (3,958) | (6,661) | (6,459) | (5,809) | | | |
| BALANCING VIRTUAL | (16,396) | (26,646) | (28,269) | (23,891) | | | |
| UFE/LOSSES | 105,405 | 104,246 | 98,742 | 100,701 | | | |



SETTLEMENTS REPORT
February 2019 Settlement Adjustment
July 8, 2019

Initial Settlement – Market Residuals Analysis

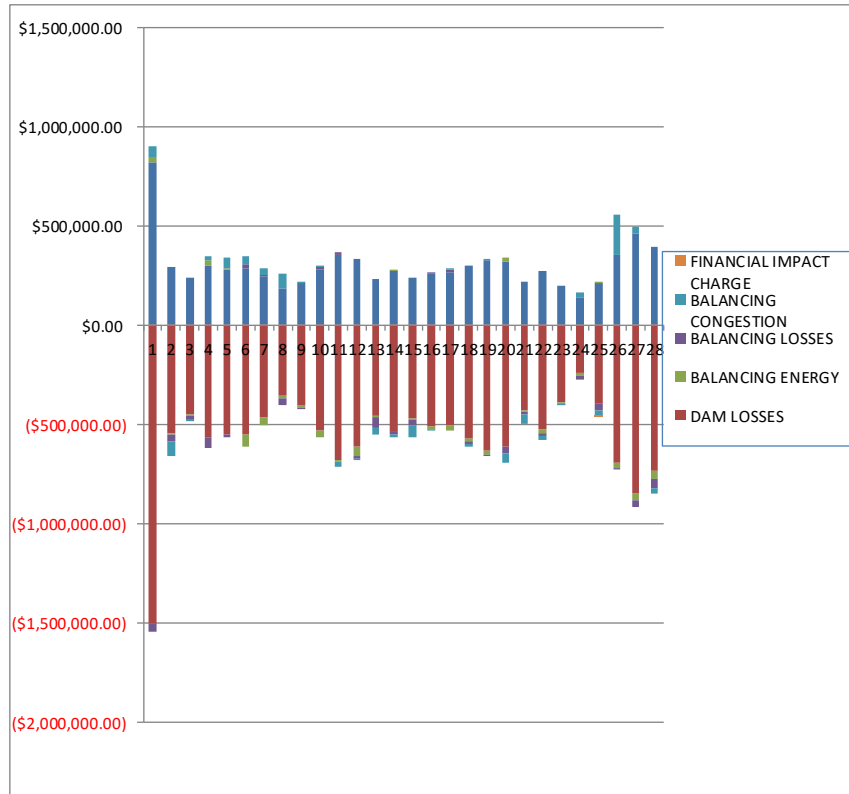
| | MONDAY | TUESDAY | WEDNESDAY | THURSDAY | FRIDAY | SATURDAY | SUNDAY |
|-------------------------|----------------|----------------|----------------|----------------|------------------|----------------|----------------|
| | | | | | 1 | 2 | 3 |
| DAM ENERGY | | | | | \$821,759.90 | \$293,674.98 | \$237,234.19 |
| DAM LOSSES | | | | | (\$1,506,554.39) | (\$547,251.82) | (\$452,427.63) |
| BALANCING ENERGY | | | | | \$25,878.62 | (\$5,358.47) | (\$2,819.37) |
| BALANCING LOSSES | | | | | (\$35,627.84) | (\$28,999.18) | (\$18,996.06) |
| BALANCING CONGESTION | | | | | \$54,904.77 | (\$78,037.79) | (\$3,056.24) |
| FINANCIAL IMPACT CHARGE | | | | | \$0.00 | \$0.00 | \$0.00 |
| | 4 | 5 | 6 | 7 | 8 | 9 | 10 |
| DAM ENERGY | \$297,928.99 | \$283,213.23 | \$286,961.97 | \$244,479.11 | \$185,448.58 | \$211,934.46 | \$281,959.30 |
| DAM LOSSES | (\$565,596.55) | (\$554,797.66) | (\$554,230.16) | (\$462,206.02) | (\$353,360.52) | (\$405,722.18) | (\$532,398.07) |
| BALANCING ENERGY | \$29,068.62 | \$2,063.37 | (\$60,773.05) | (\$41,912.44) | (\$15,921.45) | (\$7,873.02) | (\$34,512.24) |
| BALANCING LOSSES | (\$52,386.66) | (\$12,028.32) | \$21,152.69 | \$7,082.78 | (\$32,760.03) | (\$11,696.19) | \$9,237.45 |
| BALANCING CONGESTION | \$24,631.38 | \$57,610.30 | \$41,428.05 | \$37,695.91 | \$71,840.22 | \$9,479.13 | \$752.76 |
| FINANCIAL IMPACT CHARGE | \$0.00 | \$0.00 | \$0.00 | \$0.00 | \$0.00 | \$0.00 | \$0.00 |
| | 11 | 12 | 13 | 14 | 15 | 16 | 17 |
| DAM ENERGY | \$357,425.95 | \$331,417.88 | \$233,542.44 | \$271,246.34 | \$239,162.68 | \$262,108.91 | \$264,702.28 |
| DAM LOSSES | (\$682,289.32) | (\$614,249.86) | (\$455,872.39) | (\$536,296.75) | (\$470,451.39) | (\$513,310.45) | (\$507,288.49) |
| BALANCING ENERGY | (\$1,725.18) | (\$47,680.22) | (\$9,210.74) | \$22.52 | (\$4,010.84) | (\$10,373.59) | (\$26,834.55) |
| BALANCING LOSSES | \$7,488.45 | (\$10,136.45) | (\$54,929.48) | (\$18,314.38) | (\$31,998.41) | \$1,556.90 | \$16,494.23 |
| BALANCING CONGESTION | (\$29,408.81) | \$203.07 | (\$32,923.51) | (\$12,663.16) | (\$54,643.96) | (\$6,594.14) | \$299.18 |
| FINANCIAL IMPACT CHARGE | \$0.00 | \$0.00 | \$0.00 | \$0.00 | \$0.00 | \$0.00 | \$0.00 |
| | 18 | 19 | 20 | 21 | 22 | 23 | 24 |
| DAM ENERGY | \$298,119.91 | \$328,449.80 | \$322,040.23 | \$220,511.20 | \$272,495.86 | \$200,528.54 | \$136,610.53 |
| DAM LOSSES | (\$570,485.90) | (\$633,872.74) | (\$614,101.65) | (\$426,965.38) | (\$523,210.09) | (\$387,137.30) | (\$241,072.23) |
| BALANCING ENERGY | (\$16,141.78) | (\$46,080.26) | \$15,794.09 | (\$9,366.96) | \$20,883.63 | (\$7,720.39) | (\$15,653.78) |
| BALANCING LOSSES | (\$12,253.25) | (\$4,295.57) | (\$32,421.22) | (\$13,478.99) | (\$12,551.32) | (\$921.85) | (\$17,828.35) |
| BALANCING CONGESTION | (\$11,072.54) | \$6,040.39 | (\$44,158.39) | (\$42,396.26) | (\$21,204.11) | (\$9,196.43) | \$30,855.73 |
| FINANCIAL IMPACT CHARGE | \$0.00 | \$0.00 | \$0.00 | \$0.00 | \$0.00 | \$0.00 | \$0.00 |
| | 25 | 26 | 27 | 28 | 29 | 30 | 31 |
| DAM ENERGY | \$209,881.34 | \$354,842.81 | \$465,234.15 | \$395,927.19 | | | |
| DAM LOSSES | (\$393,942.24) | (\$694,226.98) | (\$850,296.96) | (\$735,904.02) | | | |
| BALANCING ENERGY | \$573.43 | (\$23,527.79) | (\$35,022.23) | (\$39,250.52) | | | |
| BALANCING LOSSES | (\$37,769.65) | (\$2,268.42) | (\$29,914.65) | (\$48,660.22) | | | |
| BALANCING CONGESTION | (\$27,020.94) | \$215,239.15 | \$30,458.92 | (\$22,627.44) | | | |
| FINANCIAL IMPACT CHARGE | (\$6.09) | \$0.00 | \$0.00 | \$0.00 | | | |



SETTLEMENTS REPORT
February 2019 Settlement Adjustment
July 8, 2019

4-Month Settlement Adjustment – Market Residuals Analysis

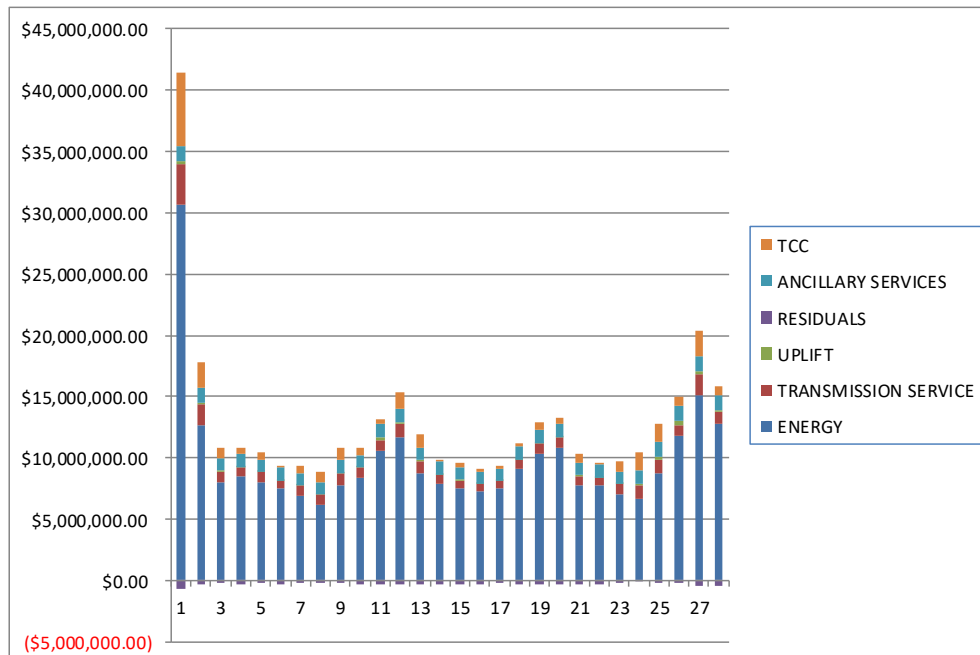
| | MONDAY | TUESDAY | WEDNESDAY | THURSDAY | FRIDAY | SATURDAY | SUNDAY |
|-------------------------|----------------|----------------|----------------|----------------|------------------|----------------|----------------|
| | | | | | 1 | 2 | 3 |
| DAM ENERGY | | | | | \$821,759.90 | \$293,674.97 | \$237,234.19 |
| DAM LOSSES | | | | | (\$1,506,554.39) | (\$547,251.83) | (\$452,427.64) |
| BALANCING ENERGY | | | | | \$24,522.92 | (\$5,824.53) | (\$2,964.21) |
| BALANCING LOSSES | | | | | (\$35,404.77) | (\$29,110.90) | (\$18,976.51) |
| BALANCING CONGESTION | | | | | \$58,255.10 | (\$79,388.78) | (\$3,269.98) |
| FINANCIAL IMPACT CHARGE | | | | | \$0.00 | \$0.00 | \$0.00 |
| | 4 | 5 | 6 | 7 | 8 | 9 | 10 |
| DAM ENERGY | \$297,928.99 | \$283,213.23 | \$286,961.97 | \$244,479.11 | \$185,448.58 | \$211,934.46 | \$281,959.30 |
| DAM LOSSES | (\$565,596.54) | (\$554,797.66) | (\$554,230.16) | (\$462,206.02) | (\$353,360.52) | (\$405,722.18) | (\$532,398.07) |
| BALANCING ENERGY | \$28,711.03 | \$2,059.98 | (\$60,776.88) | (\$41,897.88) | (\$15,949.29) | (\$7,873.42) | (\$34,492.30) |
| BALANCING LOSSES | (\$52,297.26) | (\$12,459.12) | \$21,241.19 | \$7,151.10 | (\$32,955.42) | (\$11,914.26) | \$8,893.91 |
| BALANCING CONGESTION | \$24,100.56 | \$57,367.52 | \$41,427.06 | \$37,456.95 | \$72,568.05 | \$9,258.51 | \$733.59 |
| FINANCIAL IMPACT CHARGE | \$0.00 | \$0.00 | \$0.00 | \$0.00 | \$0.00 | \$0.00 | \$0.00 |
| | 11 | 12 | 13 | 14 | 15 | 16 | 17 |
| DAM ENERGY | \$357,425.95 | \$331,417.89 | \$233,542.45 | \$271,246.34 | \$239,162.68 | \$262,108.90 | \$264,702.28 |
| DAM LOSSES | (\$682,289.32) | (\$614,249.86) | (\$455,872.39) | (\$536,296.75) | (\$470,451.39) | (\$513,310.45) | (\$507,288.50) |
| BALANCING ENERGY | (\$1,726.73) | (\$47,679.25) | (\$9,194.82) | \$82.08 | (\$3,914.17) | (\$10,336.67) | (\$26,781.29) |
| BALANCING LOSSES | \$7,404.90 | (\$10,093.50) | (\$55,076.62) | (\$18,494.90) | (\$32,130.42) | \$1,323.20 | \$16,312.90 |
| BALANCING CONGESTION | (\$29,427.39) | (\$85.81) | (\$33,112.86) | (\$12,991.86) | (\$55,577.89) | (\$6,683.68) | \$298.43 |
| FINANCIAL IMPACT CHARGE | \$0.00 | \$0.00 | \$0.00 | \$0.00 | \$0.00 | \$0.00 | \$0.00 |
| | 18 | 19 | 20 | 21 | 22 | 23 | 24 |
| DAM ENERGY | \$298,119.91 | \$328,449.80 | \$322,040.23 | \$220,511.20 | \$272,495.86 | \$200,528.55 | \$136,610.53 |
| DAM LOSSES | (\$570,485.91) | (\$633,872.75) | (\$614,101.66) | (\$426,965.38) | (\$523,210.09) | (\$387,137.30) | (\$241,072.23) |
| BALANCING ENERGY | (\$16,110.23) | (\$17,523.13) | \$15,799.57 | (\$9,369.15) | (\$20,663.07) | (\$7,612.12) | (\$15,657.42) |
| BALANCING LOSSES | (\$12,542.72) | (\$2,277.10) | (\$32,543.61) | (\$13,549.77) | (\$12,868.01) | (\$1,105.57) | (\$17,862.51) |
| BALANCING CONGESTION | (\$11,295.56) | \$6,400.19 | (\$45,058.98) | (\$44,257.28) | (\$21,337.36) | (\$9,399.66) | \$29,265.96 |
| FINANCIAL IMPACT CHARGE | \$0.00 | \$0.00 | \$0.00 | \$0.00 | \$0.00 | \$0.00 | \$0.00 |
| | 25 | 26 | 27 | 28 | 29 | 30 | 31 |
| DAM ENERGY | \$209,881.34 | \$354,842.80 | \$465,234.15 | \$395,927.19 | | | |
| DAM LOSSES | (\$393,942.23) | (\$694,226.99) | (\$850,296.97) | (\$735,904.02) | | | |
| BALANCING ENERGY | \$604.76 | (\$24,041.73) | (\$34,677.26) | (\$39,201.55) | | | |
| BALANCING LOSSES | (\$38,285.34) | (\$2,823.86) | (\$29,978.29) | (\$49,039.34) | | | |
| BALANCING CONGESTION | (\$27,809.49) | \$200,963.79 | \$29,989.63 | (\$22,860.77) | | | |
| FINANCIAL IMPACT CHARGE | (\$6.13) | \$0.00 | \$0.00 | \$0.00 | | | |



SETTLEMENTS REPORT
February 2019 Settlement Adjustment
July 8, 2019

Initial Settlement – Market Costs Analysis

| | MONDAY | TUESDAY | WEDNESDAY | THURSDAY | FRIDAY | SATURDAY | SUNDAY |
|----------------------|-----------------|-----------------|-----------------|-----------------|-----------------|-----------------|----------------|
| | | | | | 1 | 2 | 3 |
| ENERGY | | | | | \$30,673,942.34 | \$12,656,598.50 | \$7,955,733.47 |
| TRANSMISSION SERVICE | | | | | \$3,334,018.59 | \$1,676,498.74 | \$883,904.96 |
| UPLIFT | | | | | \$193,058.51 | \$203,293.06 | \$112,200.54 |
| RESIDUALS | | | | | (\$639,638.94) | (\$365,972.28) | (\$240,065.11) |
| ANCILLARY SERVICES | | | | | \$1,255,833.59 | \$1,163,229.41 | \$1,057,571.37 |
| TCC | | | | | \$6,024,911.36 | \$2,097,580.52 | \$792,483.71 |
| | 4 | 5 | 6 | 7 | 8 | 9 | 10 |
| ENERGY | \$8,503,953.45 | \$8,061,541.66 | \$7,516,610.93 | \$6,952,970.22 | \$6,112,024.92 | \$7,759,648.30 | \$8,327,356.45 |
| TRANSMISSION SERVICE | \$752,408.46 | \$770,004.72 | \$636,604.13 | \$758,757.10 | \$854,413.65 | \$974,576.60 | \$839,208.81 |
| UPLIFT | \$16,588.85 | \$19,457.11 | \$15,396.97 | \$39,567.32 | \$22,928.59 | \$15,213.01 | \$7,852.47 |
| RESIDUALS | (\$266,354.22) | (\$223,939.08) | (\$265,460.50) | (\$214,860.66) | (\$144,753.20) | (\$203,877.80) | (\$274,960.80) |
| ANCILLARY SERVICES | \$1,039,176.76 | \$1,043,871.26 | \$1,029,478.06 | \$1,033,545.87 | \$1,047,201.51 | \$1,061,791.42 | \$1,046,435.04 |
| TCC | \$487,207.84 | \$601,826.95 | \$77,288.33 | \$539,087.84 | \$798,207.50 | \$987,447.38 | \$540,919.71 |
| | 11 | 12 | 13 | 14 | 15 | 16 | 17 |
| ENERGY | \$10,599,709.08 | \$11,655,469.99 | \$8,748,179.77 | \$7,935,506.74 | \$7,460,118.06 | \$7,232,726.59 | \$7,520,210.24 |
| TRANSMISSION SERVICE | \$887,977.46 | \$1,125,452.92 | \$1,009,949.46 | \$645,818.61 | \$714,011.89 | \$668,281.15 | \$634,585.55 |
| UPLIFT | \$156,399.86 | \$118,982.49 | \$35,340.19 | \$31,814.78 | \$41,676.37 | \$10,490.75 | \$9,606.80 |
| RESIDUALS | (\$348,508.91) | (\$340,445.58) | (\$319,393.68) | (\$296,005.43) | (\$321,941.92) | (\$266,612.37) | (\$252,627.35) |
| ANCILLARY SERVICES | \$1,103,168.88 | \$1,155,873.80 | \$1,065,636.18 | \$1,052,158.91 | \$1,007,220.57 | \$966,199.04 | \$985,580.57 |
| TCC | \$356,109.52 | \$1,295,649.75 | \$1,065,175.50 | \$120,092.08 | \$376,118.31 | \$240,577.20 | \$138,449.44 |
| | 18 | 19 | 20 | 21 | 22 | 23 | 24 |
| ENERGY | \$9,111,010.55 | \$10,299,028.09 | \$10,859,420.98 | \$7,741,459.37 | \$7,714,498.22 | \$7,001,741.09 | \$6,600,061.48 |
| TRANSMISSION SERVICE | \$698,053.90 | \$856,034.59 | \$837,937.12 | \$810,635.22 | \$648,422.56 | \$880,160.47 | \$1,125,063.29 |
| UPLIFT | \$6,499.80 | \$30,562.92 | \$24,535.81 | \$60,829.84 | \$67,138.62 | \$4,217.21 | \$195,109.22 |
| RESIDUALS | (\$311,833.56) | (\$349,758.38) | (\$352,846.94) | (\$271,696.39) | (\$305,353.29) | (\$204,447.43) | (\$107,088.10) |
| ANCILLARY SERVICES | \$1,080,217.74 | \$1,109,716.06 | \$1,102,350.67 | \$1,007,620.56 | \$1,031,284.62 | \$1,012,788.14 | \$1,105,900.78 |
| TCC | \$274,770.87 | \$569,395.96 | \$442,815.06 | \$711,409.12 | \$175,766.34 | \$790,278.97 | \$1,481,399.93 |
| | 25 | 26 | 27 | 28 | 29 | 30 | 31 |
| ENERGY | \$8,755,221.58 | \$11,738,132.59 | \$15,133,026.21 | \$12,759,314.34 | | | |
| TRANSMISSION SERVICE | \$1,139,938.93 | \$954,178.43 | \$1,703,404.15 | \$942,915.28 | | | |
| UPLIFT | \$230,955.46 | \$314,664.77 | \$241,794.98 | \$184,069.66 | | | |
| RESIDUALS | (\$248,284.15) | (\$149,941.23) | (\$419,540.77) | (\$450,515.01) | | | |
| ANCILLARY SERVICES | \$1,161,282.97 | \$1,185,261.84 | \$1,182,452.63 | \$1,161,963.16 | | | |
| TCC | \$1,459,588.02 | \$837,578.52 | \$2,154,055.40 | \$826,523.16 | | | |



SETTLEMENTS REPORT
February 2019 Settlement Adjustment
July 8, 2019

4-Month Settlement Adjustment – Market Costs Analysis

| | MONDAY | TUESDAY | WEDNESDAY | THURSDAY | FRIDAY | SATURDAY | SUNDAY |
|----------------------|-----------------|-----------------|-----------------|-----------------|-----------------|-----------------|----------------|
| | | | | | 1 | 2 | 3 |
| ENERGY | | | | | \$30,662,324.76 | \$12,638,699.00 | \$7,955,715.87 |
| TRANSMISSION SERVICE | | | | | \$3,333,149.33 | \$1,675,151.21 | \$882,876.54 |
| UPLIFT | | | | | \$193,058.51 | \$203,290.05 | \$112,200.54 |
| RESIDUALS | | | | | (\$637,421.24) | (\$367,901.07) | (\$240,404.15) |
| ANCILLARY SERVICES | | | | | \$1,260,098.06 | \$1,162,228.99 | \$1,056,410.25 |
| TCC | | | | | \$6,017,699.65 | \$2,092,838.74 | \$790,727.72 |
| | 4 | 5 | 6 | 7 | 8 | 9 | 10 |
| ENERGY | \$8,504,539.73 | \$8,070,433.00 | \$7,517,334.50 | \$6,953,711.74 | \$6,112,118.37 | \$7,755,928.48 | \$8,328,182.67 |
| TRANSMISSION SERVICE | \$751,606.21 | \$769,537.31 | \$635,775.95 | \$757,957.50 | \$853,713.94 | \$973,687.49 | \$838,421.50 |
| UPLIFT | \$16,567.57 | \$19,457.12 | \$15,396.95 | \$39,567.33 | \$22,928.59 | \$15,213.02 | \$7,852.48 |
| RESIDUALS | (\$267,153.22) | (\$224,616.05) | (\$265,376.82) | (\$215,016.74) | (\$144,248.60) | (\$204,316.89) | (\$275,303.57) |
| ANCILLARY SERVICES | \$1,037,937.07 | \$1,042,553.04 | \$1,028,174.81 | \$1,031,930.47 | \$1,045,338.76 | \$1,060,822.59 | \$1,045,412.10 |
| TCC | \$487,003.59 | \$602,538.55 | \$77,304.73 | \$539,080.18 | \$798,068.44 | \$985,058.16 | \$539,804.43 |
| | 11 | 12 | 13 | 14 | 15 | 16 | 17 |
| ENERGY | \$10,600,455.70 | \$11,656,247.32 | \$8,749,331.94 | \$7,935,968.77 | \$7,458,293.71 | \$7,227,681.29 | \$7,517,489.22 |
| TRANSMISSION SERVICE | \$887,153.69 | \$1,124,688.22 | \$1,009,218.71 | \$645,094.14 | \$713,124.31 | \$667,099.01 | \$633,421.79 |
| UPLIFT | \$151,751.63 | \$118,982.49 | \$35,340.20 | \$31,814.78 | \$41,676.37 | \$10,490.74 | \$9,606.80 |
| RESIDUALS | (\$348,612.59) | (\$340,690.53) | (\$319,714.24) | (\$296,455.09) | (\$322,911.19) | (\$266,898.70) | (\$252,756.18) |
| ANCILLARY SERVICES | \$1,101,901.14 | \$1,155,068.83 | \$1,064,818.16 | \$1,051,038.00 | \$1,005,966.58 | \$964,299.72 | \$983,745.51 |
| TCC | \$355,832.39 | \$1,293,683.97 | \$1,063,029.26 | \$119,987.17 | \$375,335.10 | \$240,293.26 | \$138,357.29 |
| | 18 | 19 | 20 | 21 | 22 | 23 | 24 |
| ENERGY | \$9,111,990.37 | \$10,261,054.73 | \$10,860,941.98 | \$7,742,485.46 | \$7,712,537.93 | \$6,999,032.71 | \$6,590,524.69 |
| TRANSMISSION SERVICE | \$697,431.93 | \$854,366.29 | \$837,301.13 | \$810,042.87 | \$647,565.81 | \$879,222.96 | \$1,124,108.99 |
| UPLIFT | \$6,499.81 | \$29,133.99 | \$24,535.78 | \$73,703.92 | \$67,138.65 | \$4,217.21 | \$215,863.63 |
| RESIDUALS | (\$312,314.51) | (\$318,822.99) | (\$353,864.45) | (\$273,630.38) | (\$305,582.67) | (\$204,726.10) | (\$108,715.67) |
| ANCILLARY SERVICES | \$1,079,335.55 | \$1,106,776.50 | \$1,101,555.17 | \$1,006,681.90 | \$1,029,976.49 | \$1,011,365.61 | \$1,104,770.42 |
| TCC | \$274,446.95 | \$569,029.73 | \$441,818.10 | \$710,068.24 | \$175,432.36 | \$788,620.20 | \$1,477,912.75 |
| | 25 | 26 | 27 | 28 | 29 | 30 | 31 |
| ENERGY | \$8,760,513.17 | \$11,754,238.77 | \$15,133,731.08 | \$12,762,338.38 | | | |
| TRANSMISSION SERVICE | \$1,139,302.39 | \$953,337.45 | \$1,702,701.53 | \$942,064.87 | | | |
| UPLIFT | \$245,248.91 | \$314,664.77 | \$251,731.91 | \$184,069.67 | | | |
| RESIDUALS | (\$249,557.09) | (\$165,285.99) | (\$419,728.74) | (\$451,078.49) | | | |
| ANCILLARY SERVICES | \$1,161,090.26 | \$1,183,453.06 | \$1,181,071.89 | \$1,160,071.07 | | | |
| TCC | \$1,455,995.01 | \$837,024.79 | \$2,153,141.22 | \$826,696.61 | | | |

