

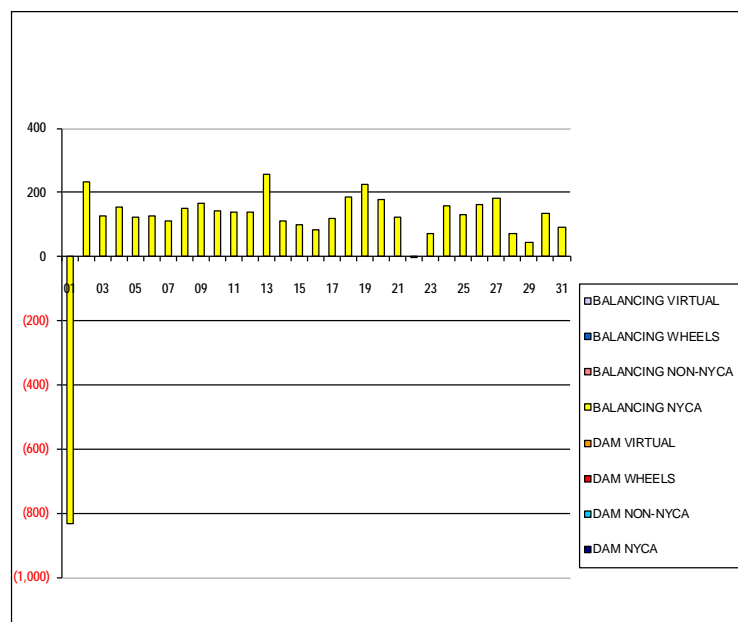
SETTLEMENTS REPORT

August 2019 Settlement Adjustment

January 8, 2020

Settlement Adjustment – Market Supply Delta Analysis

	MONDAY	TUESDAY	WEDNESDAY	THURSDAY	FRIDAY	SATURDAY	SUNDAY
				1	2	3	4
DAM NYCA				0	0	0	0
DAM NON-NYCA				0	0	0	0
DAM WHEELS				0	0	0	0
DAM VIRTUAL				0	0	0	0
BALANCING NYCA				(831)	234	127	152
BALANCING NON-NYCA				0	0	0	0
BALANCING WHEELS				0	0	0	0
BALANCING VIRTUAL				0	0	0	0
	5	6	7	8	9	10	11
DAM NYCA	0	0	0	0	0	0	0
DAM NON-NYCA	0	0	0	0	0	0	0
DAM WHEELS	0	0	0	0	0	0	0
DAM VIRTUAL	0	0	0	0	0	0	0
BALANCING NYCA	123	126	111	149	164	144	139
BALANCING NON-NYCA	0	0	0	0	0	0	0
BALANCING WHEELS	0	0	0	0	0	0	0
BALANCING VIRTUAL	0	0	0	0	0	0	0
	12	13	14	15	16	17	18
DAM NYCA	0	0	0	0	0	0	0
DAM NON-NYCA	0	0	0	0	0	0	0
DAM WHEELS	0	0	0	0	0	0	0
DAM VIRTUAL	0	0	0	0	0	0	0
BALANCING NYCA	138	257	113	99	83	118	186
BALANCING NON-NYCA	0	0	0	0	0	0	0
BALANCING WHEELS	0	0	0	0	0	0	0
BALANCING VIRTUAL	0	0	0	0	0	0	0
	19	20	21	22	23	24	25
DAM NYCA	0	0	0	0	0	0	0
DAM NON-NYCA	0	0	0	0	0	0	0
DAM WHEELS	0	0	0	0	0	0	0
DAM VIRTUAL	0	0	0	0	0	0	0
BALANCING NYCA	224	177	122	(1)	70	160	130
BALANCING NON-NYCA	0	0	0	0	0	0	0
BALANCING WHEELS	0	0	0	0	0	0	0
BALANCING VIRTUAL	0	0	0	0	0	0	0
	26	27	28	29	30	31	
DAM NYCA	0	0	0	0	0	0	
DAM NON-NYCA	0	0	0	0	0	0	
DAM WHEELS	0	0	0	0	0	0	
DAM VIRTUAL	0	0	0	0	0	0	
BALANCING NYCA	161	181	71	45	133	92	
BALANCING NON-NYCA	0	0	0	0	0	0	
BALANCING WHEELS	0	0	0	0	0	0	
BALANCING VIRTUAL	0	0	0	0	0	0	



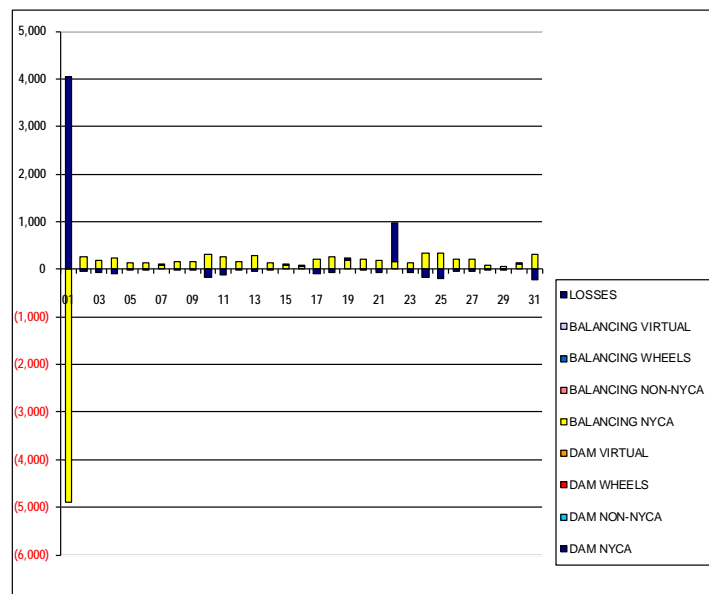
SETTLEMENTS REPORT

August 2019 Settlement Adjustment

January 8, 2020

Settlement Adjustment – Market Withdrawals Delta Analysis

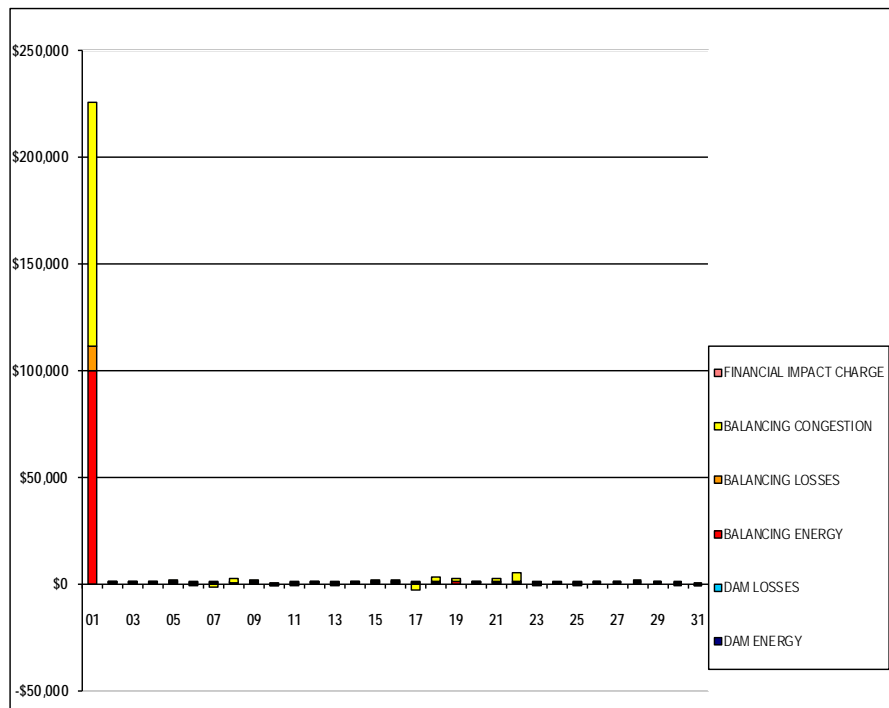
	MONDAY	TUESDAY	WEDNESDAY	THURSDAY	FRIDAY	SATURDAY	SUNDAY
				1	2	3	4
DAM NYCA				0	0	0	0
DAM NON-NYCA				0	0	0	0
DAM WHEELS				0	0	0	0
DAM VIRTUAL				0	0	0	0
BALANCING NYCA				(4,886)	265	193	247
BALANCING NON-NYCA				0	0	0	0
BALANCING WHEELS				0	0	0	0
BALANCING VIRTUAL				0	0	0	0
UFE/LOSSES				4,055	(32)	(66)	(94)
	5	6	7	8	9	10	11
DAM NYCA	0	0	0	0	0	0	0
DAM NON-NYCA	0	0	0	0	0	0	0
DAM WHEELS	0	0	0	0	0	0	0
DAM VIRTUAL	0	0	0	0	0	0	0
BALANCING NYCA	141	141	95	154	165	309	254
BALANCING NON-NYCA	0	0	0	0	0	0	0
BALANCING WHEELS	0	0	0	0	0	0	0
BALANCING VIRTUAL	0	0	0	0	0	0	0
UFE/LOSSES	(18)	(16)	17	(5)	(1)	(165)	(115)
	12	13	14	15	16	17	18
DAM NYCA	0	0	0	0	0	0	0
DAM NON-NYCA	0	0	0	0	0	0	0
DAM WHEELS	0	0	0	0	0	0	0
DAM VIRTUAL	0	0	0	0	0	0	0
BALANCING NYCA	168	292	142	88	65	205	265
BALANCING NON-NYCA	0	0	0	0	0	0	0
BALANCING WHEELS	0	0	0	0	0	0	0
BALANCING VIRTUAL	0	0	0	0	0	0	0
UFE/LOSSES	(29)	(35)	(29)	11	18	(87)	(80)
	19	20	21	22	23	24	25
DAM NYCA	0	0	0	0	0	0	0
DAM NON-NYCA	0	0	0	0	0	0	0
DAM WHEELS	0	0	0	0	0	0	0
DAM VIRTUAL	0	0	0	0	0	0	0
BALANCING NYCA	198	200	184	152	141	339	327
BALANCING NON-NYCA	0	0	0	0	0	0	0
BALANCING WHEELS	0	0	0	0	0	0	0
BALANCING VIRTUAL	0	0	0	0	0	0	0
UFE/LOSSES	26	(23)	(62)	825	(71)	(180)	(197)
	26	27	28	29	30	31	
DAM NYCA	0	0	0	0	0	0	
DAM NON-NYCA	0	0	0	0	0	0	
DAM WHEELS	0	0	0	0	0	0	
DAM VIRTUAL	0	0	0	0	0	0	
BALANCING NYCA	212	215	73	56	115	325	
BALANCING NON-NYCA	0	0	0	0	0	0	
BALANCING WHEELS	0	0	0	0	0	0	
BALANCING VIRTUAL	0	0	0	0	0	0	
UFE/LOSSES	(50)	(34)	(2)	(11)	18	(233)	



SETTLEMENTS REPORT
August 2019 Settlement Adjustment
January 8, 2020

Settlement Adjustment – Market Residuals Delta Analysis

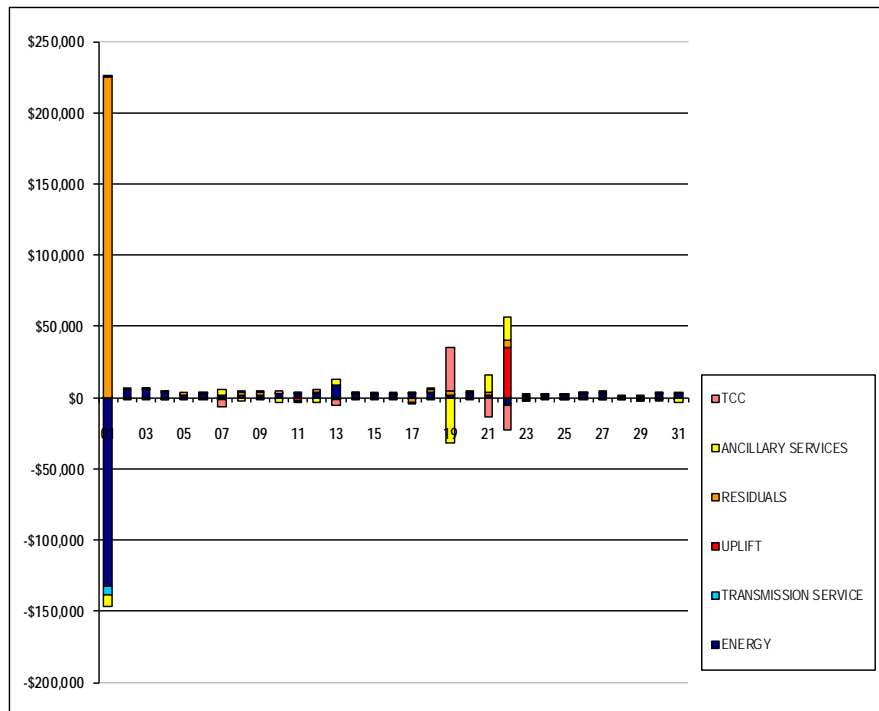
	MONDAY	TUESDAY	WEDNESDAY	THURSDAY	FRIDAY	SATURDAY	SUNDAY
				1	2	3	4
DAM ENERGY				(\$0.01)	\$0.00	\$0.00	\$0.00
DAM LOSSES				\$0.00	\$0.01	\$0.00	(\$0.01)
BALANCING ENERGY				\$99,854.00	\$307.45	\$409.93	\$330.54
BALANCING LOSSES				\$11,556.00	\$275.38	\$173.92	\$235.82
BALANCING CONGESTION				\$113,910.20	\$404.87	\$34.64	\$56.30
FINANCIAL IMPACT CHARGE				\$0.00	\$0.00	\$0.00	\$0.00
	5	6	7	8	9	10	11
DAM ENERGY	\$0.00	\$0.00	\$0.00	\$0.00	\$0.00	\$0.00	\$0.00
DAM LOSSES	\$0.00	\$0.00	\$0.01	\$0.00	\$0.00	\$0.00	\$0.00
BALANCING ENERGY	\$588.68	\$132.43	\$310.05	\$373.48	\$416.18	(\$112.77)	\$17.19
BALANCING LOSSES	\$281.36	\$137.38	\$114.71	\$180.57	\$266.59	\$209.42	\$119.00
BALANCING CONGESTION	\$233.94	(\$137.31)	(\$1,378.17)	\$1,491.79	\$734.63	(\$0.48)	(\$48.99)
FINANCIAL IMPACT CHARGE	\$0.00	\$0.00	\$0.00	\$0.00	\$0.00	\$0.00	\$0.00
	12	13	14	15	16	17	18
DAM ENERGY	(\$0.01)	\$0.01	\$0.00	\$0.00	\$0.00	\$0.00	\$0.01
DAM LOSSES	\$0.00	\$0.00	\$0.00	\$0.00	\$0.00	(\$0.01)	(\$0.01)
BALANCING ENERGY	\$232.36	\$76.78	\$322.67	\$526.81	\$592.05	\$600.14	\$541.13
BALANCING LOSSES	\$276.40	\$37.84	\$218.65	\$219.21	\$313.50	\$331.81	\$289.35
BALANCING CONGESTION	\$96.46	(\$985.19)	\$134.87	\$71.36	\$40.77	(\$3,278.07)	\$1,975.96
FINANCIAL IMPACT CHARGE	\$0.00	(\$0.01)	\$0.00	\$0.00	\$0.00	\$0.00	\$0.00
	19	20	21	22	23	24	25
DAM ENERGY	\$0.00	\$0.00	\$0.00	\$0.00	\$0.00	\$0.00	\$0.00
DAM LOSSES	(\$0.01)	\$0.00	\$0.00	\$0.00	\$0.00	\$0.01	\$0.00
BALANCING ENERGY	\$1,029.69	\$339.56	\$476.93	\$573.50	\$174.23	\$18.89	\$57.12
BALANCING LOSSES	\$302.18	\$167.65	\$391.98	\$536.22	\$169.73	\$69.89	\$53.56
BALANCING CONGESTION	\$1,308.10	\$283.36	\$1,421.08	\$3,657.52	(\$26.23)	\$0.00	(\$0.77)
FINANCIAL IMPACT CHARGE	\$0.00	\$0.00	\$0.00	\$0.01	\$0.01	\$0.00	\$0.00
	26	27	28	29	30	31	
DAM ENERGY	\$0.00	\$0.00	\$0.00	\$0.01	\$0.00	\$0.00	
DAM LOSSES	\$0.00	\$0.00	\$0.00	(\$0.01)	\$0.01	\$0.01	
BALANCING ENERGY	\$205.85	\$97.95	\$549.00	\$453.56	\$94.73	(\$64.88)	
BALANCING LOSSES	\$117.31	\$158.76	\$238.00	\$194.16	\$287.47	\$70.60	
BALANCING CONGESTION	\$341.31	\$42.81	\$16.33	\$198.07	(\$170.10)	(\$304.84)	
FINANCIAL IMPACT CHARGE	\$0.00	\$0.00	\$0.00	\$0.00	\$0.00	(\$0.01)	



SETTLEMENTS REPORT
August 2019 Settlement Adjustment
January 8, 2020

4-Month Settlement Adjustment – Market Costs Delta Analysis

	MONDAY	TUESDAY	WEDNESDAY	THURSDAY	FRIDAY	SATURDAY	SUNDAY
				1	2	3	4
ENERGY				(\$132,305.57)	\$5,585.04	\$5,496.75	\$3,380.39
TRANSMISSION SERVICE				(\$6,108.44)	(\$677.95)	(\$680.10)	(\$574.60)
UPLIFT				\$0.27	(\$0.05)	\$0.05	(\$0.18)
RESIDUALS				\$225,320.19	\$987.71	\$618.49	\$622.65
ANCILLARY SERVICES				(\$8,591.04)	(\$611.50)	(\$1,104.32)	(\$915.28)
TCC				\$11.66	\$0.00	\$509.46	\$402.09
	5	6	7	8	9	10	11
ENERGY	\$2,068.69	\$2,424.07	\$1,876.47	\$1,419.25	\$2,046.73	\$2,802.53	\$2,274.89
TRANSMISSION SERVICE	(\$785.73)	(\$746.09)	(\$833.83)	(\$689.96)	(\$591.45)	(\$736.13)	(\$721.13)
UPLIFT	\$35.75	(\$0.01)	(\$0.08)	(\$0.38)	(\$0.04)	\$0.21	(\$1,219.29)
RESIDUALS	\$1,103.98	\$132.50	(\$953.40)	\$2,045.84	\$1,417.40	\$96.17	\$87.20
ANCILLARY SERVICES	(\$750.57)	(\$782.54)	\$3,768.89	(\$2,225.88)	(\$769.94)	(\$2,713.51)	(\$1,332.86)
TCC	\$0.00	\$1.06	(\$4,673.48)	\$1,506.52	\$170.79	\$2,072.53	\$660.20
	12	13	14	15	16	17	18
ENERGY	\$2,934.32	\$8,761.34	\$2,222.19	\$1,744.60	\$1,858.99	\$2,347.82	\$3,388.84
TRANSMISSION SERVICE	(\$704.72)	(\$462.70)	(\$625.86)	(\$648.85)	(\$705.37)	(\$589.70)	(\$631.16)
UPLIFT	(\$1.02)	(\$1.26)	\$0.16	\$0.87	\$3.44	\$5.74	\$8.43
RESIDUALS	\$605.21	(\$870.57)	\$676.19	\$817.38	\$946.32	(\$2,346.13)	\$2,806.44
ANCILLARY SERVICES	(\$2,342.39)	\$3,613.79	(\$657.33)	(\$869.71)	(\$855.60)	(\$631.73)	(\$569.10)
TCC	\$1,670.74	(\$4,002.26)	\$35.22	\$181.40	\$157.10	\$136.23	\$41.17
	19	20	21	22	23	24	25
ENERGY	\$2,060.96	\$2,977.02	\$1,506.72	(\$4,444.07)	\$1,102.86	\$1,818.10	\$1,469.12
TRANSMISSION SERVICE	(\$591.20)	(\$618.18)	(\$748.82)	(\$661.69)	(\$921.04)	(\$676.23)	(\$692.75)
UPLIFT	\$14.17	\$0.00	(\$0.25)	\$35,439.00	(\$0.25)	\$0.04	(\$0.32)
RESIDUALS	\$2,639.96	\$790.57	\$2,289.99	\$4,767.25	\$317.74	\$88.79	\$109.91
ANCILLARY SERVICES	(\$31,255.61)	(\$622.39)	\$12,161.39	\$16,697.85	(\$1,051.98)	(\$517.14)	(\$1,151.63)
TCC	\$30,744.10	\$22.42	(\$12,853.48)	(\$17,583.56)	\$157.51	\$439.18	\$598.73
	26	27	28	29	30	31	
ENERGY	\$2,303.55	\$2,864.95	\$485.23	(\$88.20)	\$2,641.55	\$2,298.82	
TRANSMISSION SERVICE	(\$673.04)	(\$846.60)	(\$825.66)	(\$820.12)	(\$712.88)	(\$556.52)	
UPLIFT	\$0.23	(\$5.43)	\$0.01	(\$0.17)	\$222.34	(\$0.31)	
RESIDUALS	\$664.47	\$299.52	\$803.33	\$845.79	\$212.11	(\$299.12)	
ANCILLARY SERVICES	(\$935.67)	(\$987.53)	(\$7.95)	(\$1,547.38)	(\$387.70)	(\$2,270.70)	
TCC	\$297.49	\$141.45	(\$832.99)	\$691.83	(\$368.16)	\$1,875.04	



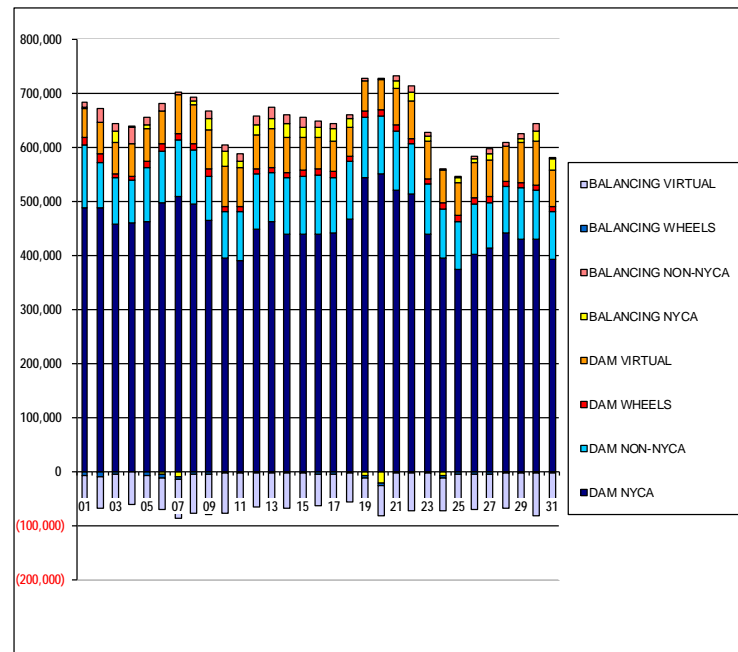
SETTLEMENTS REPORT

August 2019 Settlement Adjustment

January 8, 2020

Initial Settlement – Market Supply Analysis

	MONDAY	TUESDAY	WEDNESDAY	THURSDAY	FRIDAY	SATURDAY	SUNDAY
				1	2	3	4
DAM NYCA				489,242	488,408	458,382	460,548
DAM NON-NYCA				115,223	85,459	87,199	80,815
DAM WHEELS				14,138	14,279	5,675	5,449
DAM VIRTUAL				53,466	59,922	59,705	60,773
BALANCING NYCA				2,433	(1,065)	19,906	(22)
BALANCING NON-NYCA				9,917	23,896	15,056	29,501
BALANCING WHEELS				(6,938)	(7,079)	(4,175)	501
BALANCING VIRTUAL				(53,466)	(59,922)	(59,705)	(60,773)
	5	6	7	8	9	10	11
DAM NYCA	463,742	499,285	509,728	496,886	465,054	396,077	391,636
DAM NON-NYCA	98,900	95,239	104,618	98,816	82,563	85,217	89,701
DAM WHEELS	13,559	14,234	12,000	11,534	12,518	10,409	10,472
DAM VIRTUAL	58,859	59,045	71,900	73,070	73,611	73,019	71,788
BALANCING NYCA	8,607	(4,385)	(9,183)	6,253	21,448	28,010	11,430
BALANCING NON-NYCA	12,714	13,511	4,267	7,277	13,261	13,545	14,904
BALANCING WHEELS	(6,359)	(7,034)	(4,800)	(4,334)	(5,319)	(3,209)	(3,272)
BALANCING VIRTUAL	(58,859)	(59,045)	(71,900)	(73,070)	(73,611)	(73,019)	(71,788)
	12	13	14	15	16	17	18
DAM NYCA	450,469	464,232	439,782	441,078	440,497	441,503	466,926
DAM NON-NYCA	101,144	89,188	104,952	107,100	108,826	104,025	107,558
DAM WHEELS	9,844	9,988	10,099	10,487	11,079	11,473	10,524
DAM VIRTUAL	62,692	72,362	65,243	61,482	58,229	56,429	53,615
BALANCING NYCA	19,033	18,930	25,054	17,394	18,952	22,696	14,985
BALANCING NON-NYCA	15,812	19,483	16,871	19,036	12,390	8,309	8,141
BALANCING WHEELS	(2,644)	(2,788)	(2,899)	(3,287)	(3,879)	(4,273)	(3,324)
BALANCING VIRTUAL	(62,692)	(72,362)	(65,243)	(61,482)	(58,229)	(56,429)	(53,615)
	19	20	21	22	23	24	25
DAM NYCA	544,643	552,665	521,398	515,725	439,020	396,176	374,956
DAM NON-NYCA	111,716	106,762	110,220	93,214	94,122	91,000	87,901
DAM WHEELS	11,845	12,290	9,997	9,318	10,412	10,550	11,207
DAM VIRTUAL	56,489	55,543	68,329	68,908	67,774	61,810	61,635
BALANCING NYCA	(6,776)	(21,134)	13,127	15,071	10,208	(7,296)	8,387
BALANCING NON-NYCA	3,183	1,904	11,510	13,829	7,580	734	2,343
BALANCING WHEELS	(4,645)	(5,090)	(2,797)	(2,118)	(3,212)	(3,350)	(4,007)
BALANCING VIRTUAL	(56,489)	(55,543)	(68,329)	(68,908)	(67,774)	(61,810)	(61,635)
	26	27	28	29	30	31	
DAM NYCA	403,707	414,382	443,069	430,061	429,771	394,701	
DAM NON-NYCA	92,923	83,980	85,505	95,520	92,069	86,916	
DAM WHEELS	10,793	11,310	10,191	9,973	10,029	10,516	
DAM VIRTUAL	66,322	67,921	65,208	73,700	79,634	65,985	
BALANCING NYCA	5,945	10,972	(293)	8,865	19,603	20,604	
BALANCING NON-NYCA	5,743	8,942	6,098	9,062	14,509	1,515	
BALANCING WHEELS	(3,593)	(4,110)	(2,991)	(2,773)	(2,829)	(3,316)	
BALANCING VIRTUAL	(66,322)	(67,921)	(65,208)	(73,700)	(79,634)	(65,985)	



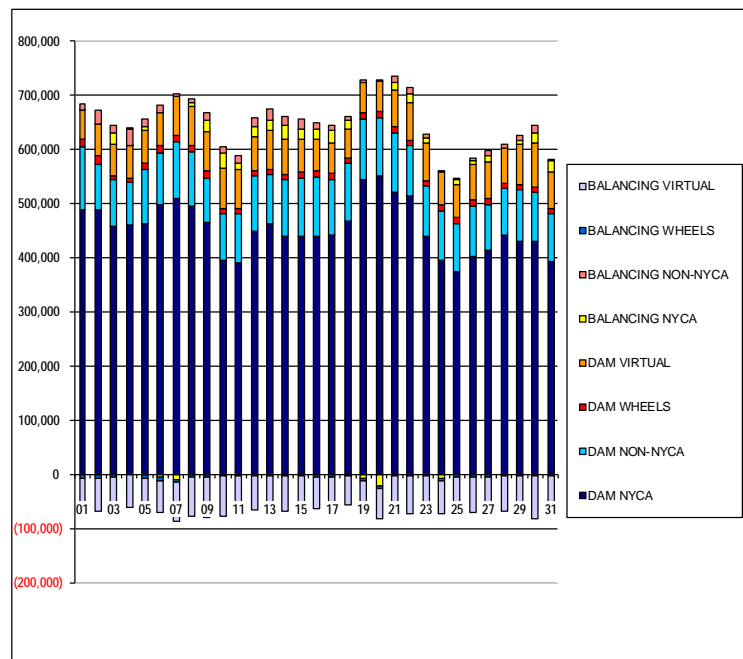
SETTLEMENTS REPORT

August 2019 Settlement Adjustment

January 8, 2020

4-Month Settlement Adjustment – Market Supply Analysis

	MONDAY	TUESDAY	WEDNESDAY	THURSDAY	FRIDAY	SATURDAY	SUNDAY
				1	2	3	4
DAM NYCA				489,242	488,408	458,382	460,548
DAM NON-NYCA				115,223	85,459	87,199	80,815
DAM WHEELS				14,138	14,279	5,675	5,449
DAM VIRTUAL				53,466	59,922	59,705	60,773
BALANCING NYCA				1,602	(832)	20,033	130
BALANCING NON-NYCA				9,917	23,896	15,056	29,501
BALANCING WHEELS				(6,938)	(7,079)	(4,175)	501
BALANCING VIRTUAL				(53,466)	(59,922)	(59,705)	(60,773)
	5	6	7	8	9	10	11
DAM NYCA	463,742	499,285	509,728	496,886	465,054	396,077	391,636
DAM NON-NYCA	98,900	95,239	104,618	98,816	82,563	85,217	89,701
DAM WHEELS	13,559	14,234	12,000	11,534	12,518	10,409	10,472
DAM VIRTUAL	58,859	59,045	71,900	73,070	73,611	73,019	71,788
BALANCING NYCA	8,731	(4,259)	(9,072)	6,402	21,613	28,154	11,569
BALANCING NON-NYCA	12,714	13,511	4,267	7,277	13,261	13,545	14,904
BALANCING WHEELS	(6,359)	(7,034)	(4,800)	(4,334)	(5,318)	(3,209)	(3,272)
BALANCING VIRTUAL	(58,859)	(59,045)	(71,900)	(73,070)	(73,611)	(73,019)	(71,788)
	12	13	14	15	16	17	18
DAM NYCA	450,469	464,232	439,782	441,078	440,497	441,503	466,926
DAM NON-NYCA	101,144	89,188	104,952	107,100	108,826	104,025	107,558
DAM WHEELS	9,844	9,988	10,099	10,487	11,079	11,473	10,524
DAM VIRTUAL	62,692	72,362	65,243	61,482	58,229	56,429	53,615
BALANCING NYCA	19,171	19,187	25,167	17,493	19,035	22,814	15,170
BALANCING NON-NYCA	15,812	19,483	16,871	19,036	12,390	8,309	8,141
BALANCING WHEELS	(2,644)	(2,788)	(2,899)	(3,287)	(3,879)	(4,273)	(3,324)
BALANCING VIRTUAL	(62,692)	(72,362)	(65,243)	(61,482)	(58,229)	(56,429)	(53,615)
	19	20	21	22	23	24	25
DAM NYCA	544,643	552,665	521,398	515,725	439,020	396,176	374,956
DAM NON-NYCA	111,716	106,762	110,220	93,214	94,122	91,000	87,901
DAM WHEELS	11,845	12,290	9,997	9,318	10,412	10,550	11,207
DAM VIRTUAL	56,489	55,543	68,329	68,908	67,774	61,810	61,635
BALANCING NYCA	(6,552)	(20,957)	13,250	15,070	10,279	(7,137)	8,517
BALANCING NON-NYCA	3,183	1,904	11,510	13,829	7,580	734	2,343
BALANCING WHEELS	(4,645)	(5,090)	(2,797)	(2,118)	(3,212)	(3,350)	(4,007)
BALANCING VIRTUAL	(56,489)	(55,543)	(68,329)	(68,908)	(67,774)	(61,810)	(61,635)
	26	27	28	29	30	31	
DAM NYCA	403,707	414,382	443,069	430,061	429,771	394,701	
DAM NON-NYCA	92,923	83,980	85,505	95,520	92,069	86,916	
DAM WHEELS	10,793	11,310	10,191	9,973	10,029	10,516	
DAM VIRTUAL	66,322	67,921	65,208	73,700	79,634	65,985	
BALANCING NYCA	6,106	11,153	(222)	8,911	19,736	20,696	
BALANCING NON-NYCA	5,743	8,942	6,098	9,062	14,509	1,515	
BALANCING WHEELS	(3,593)	(4,110)	(2,991)	(2,773)	(2,829)	(3,316)	
BALANCING VIRTUAL	(66,322)	(67,921)	(65,208)	(73,700)	(79,634)	(65,985)	



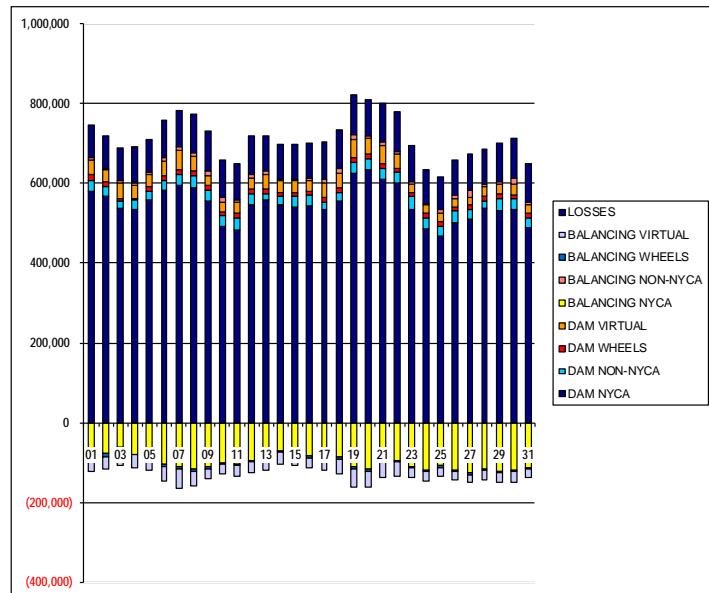
SETTLEMENTS REPORT

August 2019 Settlement Adjustment

January 8, 2020

Initial Settlement – Market Withdrawals Analysis

	MONDAY	TUESDAY	WEDNESDAY	THURSDAY	FRIDAY	SATURDAY	SUNDAY
				1	2	3	4
DAM NYCA				580,166	568,334	537,801	535,302
DAM NON-NYCA				27,297	22,862	16,840	21,987
DAM WHEELS				14,138	14,279	5,675	5,449
DAM VIRTUAL				37,574	30,376	39,586	32,665
BALANCING NYCA				(78,208)	(77,525)	(62,784)	(81,055)
BALANCING NON-NYCA				4,202	1,627	6,632	6,700
BALANCING WHEELS				(6,938)	(7,079)	(4,175)	501
BALANCING VIRTUAL				(37,574)	(30,376)	(39,586)	(32,665)
UFE/LOSSES				83,358	81,400	82,054	87,908
	5	6	7	8	9	10	11
DAM NYCA	558,164	581,608	595,089	588,885	555,460	492,177	483,189
DAM NON-NYCA	20,451	24,058	27,133	29,697	27,318	26,537	31,340
DAM WHEELS	13,559	14,234	12,000	11,534	12,518	10,409	10,472
DAM VIRTUAL	31,250	35,649	49,750	36,647	25,212	23,580	27,406
BALANCING NYCA	(82,089)	(103,935)	(110,002)	(116,356)	(110,818)	(102,008)	(104,810)
BALANCING NON-NYCA	4,880	10,076	6,603	9,776	11,626	11,331	5,627
BALANCING WHEELS	(6,359)	(7,034)	(4,800)	(4,334)	(5,318)	(3,209)	(3,272)
BALANCING VIRTUAL	(31,250)	(35,649)	(49,750)	(36,647)	(25,212)	(23,580)	(27,406)
UFE/LOSSES	82,557	91,843	90,606	97,230	98,740	94,811	92,325
	12	13	14	15	16	17	18
DAM NYCA	547,254	558,052	545,416	539,287	543,970	533,439	554,941
DAM NON-NYCA	27,518	16,843	22,714	28,346	26,218	20,714	22,813
DAM WHEELS	9,844	9,988	10,099	10,487	11,079	11,473	10,524
DAM VIRTUAL	27,277	37,461	29,290	29,355	25,849	36,041	37,880
BALANCING NYCA	(94,573)	(78,791)	(70,396)	(74,113)	(84,192)	(79,133)	(87,060)
BALANCING NON-NYCA	10,297	9,633	3,699	2,872	4,777	9,244	10,629
BALANCING WHEELS	(2,644)	(2,788)	(2,899)	(3,287)	(3,879)	(4,273)	(3,324)
BALANCING VIRTUAL	(27,277)	(37,461)	(29,290)	(29,355)	(25,849)	(36,041)	(37,880)
UFE/LOSSES	95,962	86,096	85,225	88,215	89,892	92,269	96,287
	19	20	21	22	23	24	25
DAM NYCA	624,100	633,412	609,839	600,363	535,671	486,023	468,763
DAM NON-NYCA	27,986	28,521	28,868	27,064	30,902	28,177	23,068
DAM WHEELS	11,845	12,290	9,997	9,318	10,412	10,550	11,207
DAM VIRTUAL	46,910	39,144	46,383	35,804	22,182	23,281	22,325
BALANCING NYCA	(110,773)	(117,561)	(89,382)	(95,443)	(110,461)	(119,846)	(107,648)
BALANCING NON-NYCA	11,485	6,488	8,648	8,299	3,593	1,671	8,409
BALANCING WHEELS	(4,645)	(5,090)	(2,797)	(2,118)	(3,212)	(3,350)	(4,007)
BALANCING VIRTUAL	(46,910)	(39,144)	(46,383)	(35,804)	(22,182)	(23,281)	(22,325)
UFE/LOSSES	99,967	89,339	98,282	97,555	91,225	84,588	80,995
	26	27	28	29	30	31	
DAM NYCA	501,512	511,095	537,677	532,704	535,559	488,991	
DAM NON-NYCA	29,045	24,275	18,719	30,417	25,075	25,735	
DAM WHEELS	10,793	11,310	10,191	9,973	10,029	10,516	
DAM VIRTUAL	21,034	19,183	24,236	23,941	28,100	21,005	
BALANCING NYCA	(119,110)	(125,922)	(117,496)	(122,399)	(119,389)	(112,990)	
BALANCING NON-NYCA	7,509	16,133	8,257	6,059	14,413	6,802	
BALANCING WHEELS	(3,593)	(4,110)	(2,991)	(2,773)	(2,829)	(3,316)	
BALANCING VIRTUAL	(21,034)	(19,183)	(24,236)	(23,941)	(28,100)	(21,005)	
UFE/LOSSES	89,362	92,695	87,222	96,728	100,294	95,199	



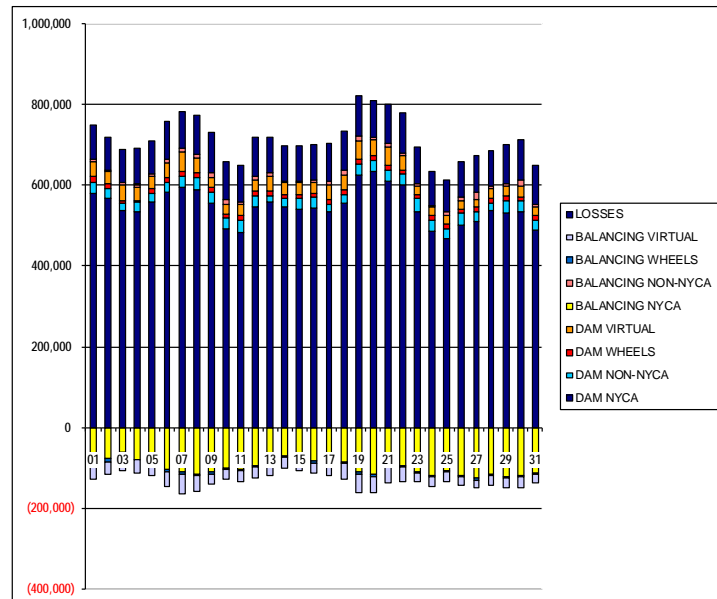
SETTLEMENTS REPORT

August 2019 Settlement Adjustment

January 8, 2020

4-Month Settlement Adjustment – Market Withdrawals Analysis

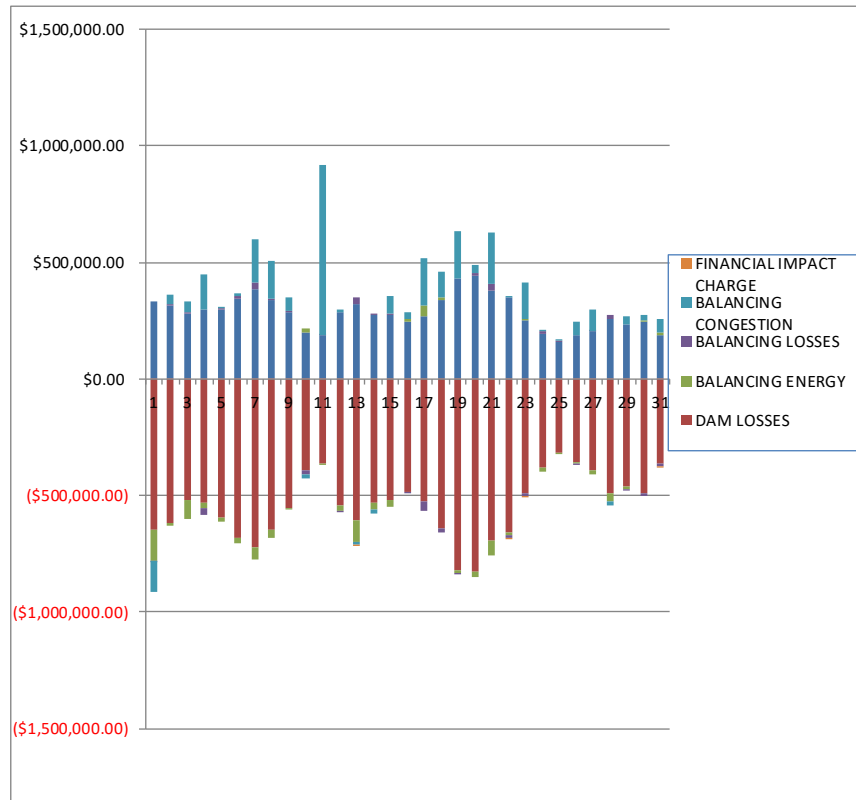
	MONDAY	TUESDAY	WEDNESDAY	THURSDAY	FRIDAY	SATURDAY	SUNDAY
				1	2	3	4
DAM NYCA				580,166	568,334	537,801	535,302
DAM NON-NYCA				27,297	22,862	16,840	21,987
DAM WHEELS				14,138	14,279	5,675	5,449
DAM VIRTUAL				37,574	30,376	39,586	32,665
BALANCING NYCA				(83,094)	(77,259)	(62,591)	(80,808)
BALANCING NON-NYCA				4,202	1,627	6,632	6,700
BALANCING WHEELS				(6,938)	(7,079)	(4,175)	501
BALANCING VIRTUAL				(37,574)	(30,376)	(39,586)	(32,665)
UFE/LOSSES				87,413	81,369	81,988	87,813
	5	6	7	8	9	10	11
DAM NYCA	558,164	581,608	595,089	588,885	555,460	492,177	483,189
DAM NON-NYCA	20,451	24,058	27,133	29,697	27,318	26,537	31,340
DAM WHEELS	13,559	14,234	12,000	11,534	12,518	10,409	10,472
DAM VIRTUAL	31,250	35,649	49,750	36,647	25,212	23,580	27,406
BALANCING NYCA	(81,948)	(103,793)	(109,907)	(116,202)	(110,653)	(101,699)	(104,556)
BALANCING NON-NYCA	4,880	10,076	6,603	9,776	11,626	11,331	5,627
BALANCING WHEELS	(6,359)	(7,034)	(4,800)	(4,334)	(5,318)	(3,209)	(3,272)
BALANCING VIRTUAL	(31,250)	(35,649)	(49,750)	(36,647)	(25,212)	(23,580)	(27,406)
UFE/LOSSES	82,539	91,827	90,622	97,224	98,739	94,647	92,210
	12	13	14	15	16	17	18
DAM NYCA	547,254	558,052	545,416	539,287	543,970	533,439	554,941
DAM NON-NYCA	27,518	16,843	22,714	28,346	26,218	20,714	22,813
DAM WHEELS	9,844	9,988	10,099	10,487	11,079	11,473	10,524
DAM VIRTUAL	27,277	37,461	29,290	29,355	25,849	36,041	37,880
BALANCING NYCA	(94,405)	(78,500)	(70,254)	(74,025)	(84,128)	(78,928)	(86,795)
BALANCING NON-NYCA	10,297	9,633	3,699	2,872	4,777	9,244	10,629
BALANCING WHEELS	(2,644)	(2,788)	(2,899)	(3,287)	(3,879)	(4,273)	(3,324)
BALANCING VIRTUAL	(27,277)	(37,461)	(29,290)	(29,355)	(25,849)	(36,041)	(37,880)
UFE/LOSSES	95,933	86,062	85,196	88,227	89,910	92,183	96,207
	19	20	21	22	23	24	25
DAM NYCA	624,100	633,412	609,839	600,363	535,671	486,023	468,763
DAM NON-NYCA	27,986	28,521	28,868	27,064	30,902	28,177	23,068
DAM WHEELS	11,845	12,290	9,997	9,318	10,412	10,550	11,207
DAM VIRTUAL	46,910	39,144	46,383	35,804	22,182	23,281	22,325
BALANCING NYCA	(110,575)	(117,362)	(89,198)	(95,290)	(110,320)	(119,507)	(107,321)
BALANCING NON-NYCA	11,405	6,488	8,648	8,299	3,593	1,671	8,409
BALANCING WHEELS	(4,645)	(5,090)	(2,797)	(2,118)	(3,212)	(3,350)	(4,007)
BALANCING VIRTUAL	(46,910)	(39,144)	(46,383)	(35,804)	(22,182)	(23,281)	(22,325)
UFE/LOSSES	99,994	89,316	98,220	98,379	91,154	84,408	80,798
	26	27	28	29	30	31	
DAM NYCA	501,512	511,095	537,677	532,704	535,559	488,991	
DAM NON-NYCA	29,045	24,275	18,719	30,417	25,075	25,735	
DAM WHEELS	10,793	11,310	10,191	9,973	10,029	10,516	
DAM VIRTUAL	21,034	19,183	24,236	23,941	28,100	21,005	
BALANCING NYCA	(118,898)	(125,707)	(117,423)	(122,343)	(119,273)	(112,665)	
BALANCING NON-NYCA	7,509	16,133	8,257	6,059	14,413	6,802	
BALANCING WHEELS	(3,593)	(4,110)	(2,991)	(2,773)	(2,829)	(3,316)	
BALANCING VIRTUAL	(21,034)	(19,183)	(24,236)	(23,941)	(28,100)	(21,005)	
UFE/LOSSES	89,312	92,661	87,220	96,717	100,311	94,966	



SETTLEMENTS REPORT
August 2019 Settlement Adjustment
January 8, 2020

Initial Settlement – Market Residuals Analysis

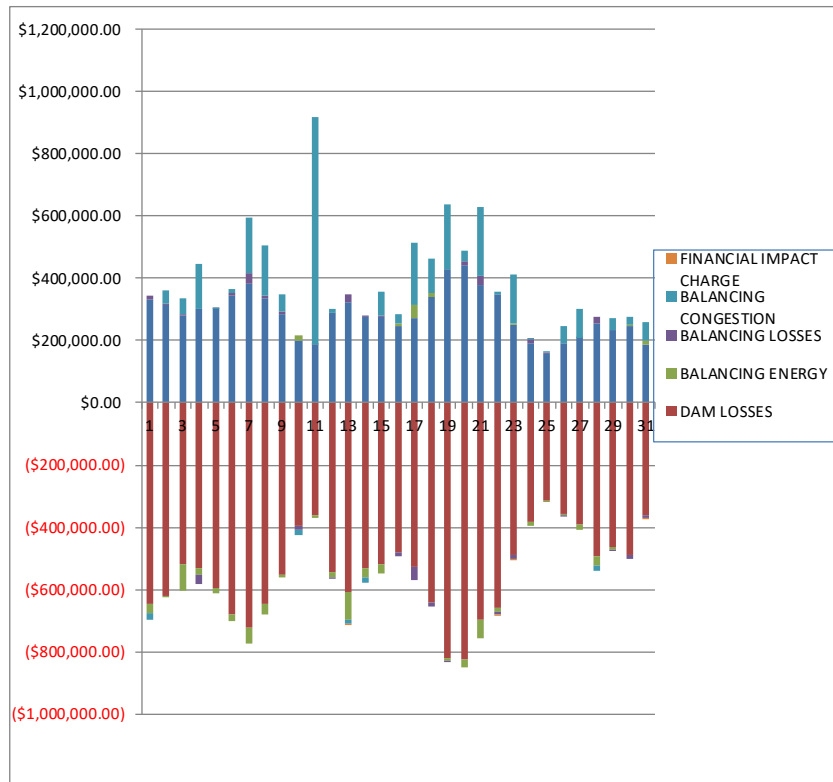
	MONDAY	TUESDAY	WEDNESDAY	THURSDAY	FRIDAY	SATURDAY	SUNDAY
				1	2	3	4
DAM ENERGY				\$333,055.42	\$315,352.28	\$279,551.77	\$300,131.56
DAM LOSSES				(\$647,984.45)	(\$618,739.48)	(\$517,589.56)	(\$533,512.58)
BALANCING ENERGY				(\$129,076.38)	(\$7,776.02)	(\$84,888.57)	(\$18,964.69)
BALANCING LOSSES				(\$1,436.74)	\$3,368.38	\$5,833.38	(\$29,520.54)
BALANCING CONGESTION				(\$135,729.40)	\$41,038.78	\$48,892.91	\$146,975.17
FINACIAL IMPACT CHARGE				\$0.00	\$0.00	\$0.00	\$0.00
	5	6	7	8	9	10	11
DAM ENERGY	\$300,349.10	\$341,923.92	\$383,225.73	\$336,625.72	\$285,144.34	\$201,433.69	\$185,130.08
DAM LOSSES	(\$596,826.85)	(\$682,103.61)	(\$723,404.28)	(\$644,060.45)	(\$553,644.39)	(\$394,369.32)	(\$360,733.62)
BALANCING ENERGY	(\$14,672.09)	(\$20,212.12)	(\$52,399.78)	(\$36,469.62)	(\$8,721.12)	\$17,027.86	(\$8,151.29)
BALANCING LOSSES	\$1,973.33	\$11,657.71	\$31,188.93	\$6,810.94	\$7,857.47	(\$13,365.11)	\$1,171.59
BALANCING CONGESTION	\$2,528.78	\$13,184.19	\$183,183.66	\$160,424.70	\$54,603.60	(\$18,021.42)	\$732,222.48
FINACIAL IMPACT CHARGE	\$0.00	\$0.00	\$0.00	\$0.00	\$0.00	\$0.00	\$0.00
	12	13	14	15	16	17	18
DAM ENERGY	\$286,637.89	\$321,441.31	\$276,015.62	\$276,700.44	\$246,916.36	\$270,935.28	\$339,784.46
DAM LOSSES	(\$542,339.35)	(\$608,344.59)	(\$530,518.73)	(\$518,131.39)	(\$481,936.86)	(\$526,981.98)	(\$641,550.07)
BALANCING ENERGY	(\$20,804.02)	(\$90,176.03)	(\$31,076.49)	(\$30,127.73)	\$9,149.78	\$42,597.89	\$11,984.89
BALANCING LOSSES	(\$3,361.68)	\$25,900.86	\$3,839.81	\$4,064.73	(\$9,475.92)	(\$41,032.00)	(\$15,514.25)
BALANCING CONGESTION	\$14,035.72	(\$12,556.75)	(\$16,668.89)	\$77,105.31	\$28,193.76	\$203,340.97	\$107,861.88
FINACIAL IMPACT CHARGE	\$0.00	(\$30.86)	\$0.00	\$0.00	\$0.00	\$0.00	\$0.00
	19	20	21	22	23	24	25
DAM ENERGY	\$430,822.03	\$440,063.11	\$377,220.98	\$347,924.81	\$249,130.77	\$191,499.22	\$156,203.54
DAM LOSSES	(\$821,071.48)	(\$824,407.89)	(\$695,083.44)	(\$660,825.01)	(\$489,738.63)	(\$380,687.47)	(\$313,738.26)
BALANCING ENERGY	(\$9,411.12)	(\$27,118.08)	(\$60,302.94)	(\$10,954.36)	\$5,315.42	(\$16,489.47)	(\$6,780.37)
BALANCING LOSSES	(\$511.28)	\$15,112.60	\$28,012.23	(\$8,787.65)	(\$11,246.12)	\$14,180.14	\$5,772.04
BALANCING CONGESTION	\$205,102.39	\$32,916.33	\$220,937.14	\$3,481.48	\$157,068.49	\$388.62	\$507.59
FINACIAL IMPACT CHARGE	\$0.00	\$0.00	\$0.00	(\$3.18)	(\$1,438.55)	\$0.00	\$0.00
	26	27	28	29	30	31	
DAM ENERGY	\$190,622.50	\$206,334.33	\$254,929.30	\$234,034.26	\$248,066.28	\$186,054.84	
DAM LOSSES	(\$355,388.67)	(\$392,371.20)	(\$492,852.48)	(\$463,460.69)	(\$488,043.49)	(\$362,424.53)	
BALANCING ENERGY	(\$6,818.04)	(\$15,888.11)	(\$32,592.84)	(\$8,525.08)	\$4,248.50	\$13,090.37	
BALANCING LOSSES	(\$425.47)	\$1,448.37	\$18,955.14	(\$1,868.94)	(\$12,637.77)	(\$9,421.00)	
BALANCING CONGESTION	\$54,704.97	\$92,127.16	(\$14,661.26)	\$36,347.89	\$24,491.13	\$60,811.50	
FINACIAL IMPACT CHARGE	\$0.00	\$0.00	\$0.00	\$0.00	\$0.00	(\$11.76)	



SETTLEMENTS REPORT
August 2019 Settlement Adjustment
January 8, 2020

4-Month Settlement Adjustment – Market Residuals Analysis

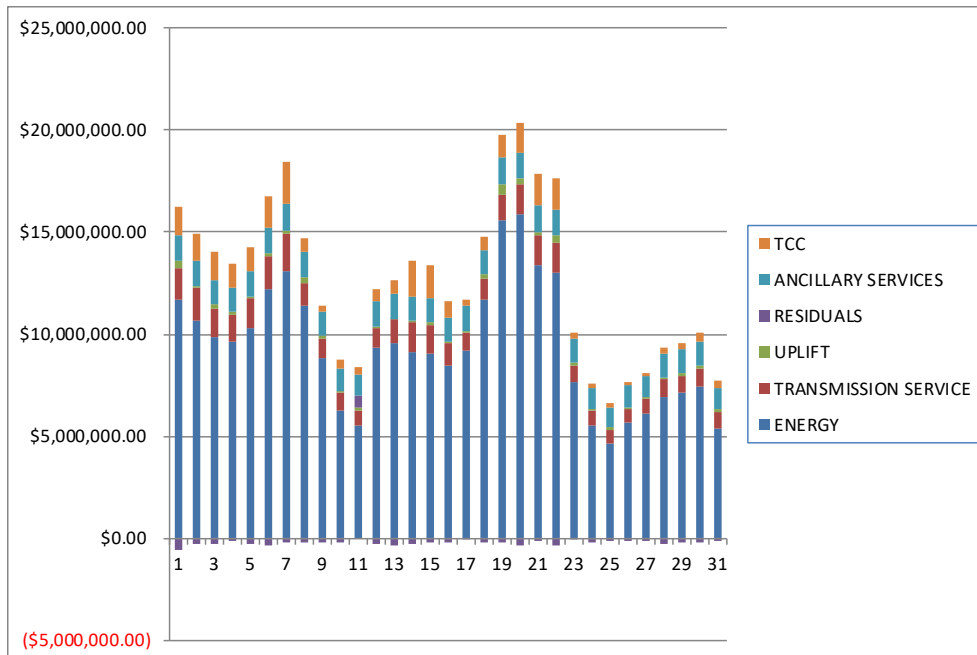
	MONDAY	TUESDAY	WEDNESDAY	THURSDAY	FRIDAY	SATURDAY	SUNDAY
				1	2	3	4
DAM ENERGY				\$333,055.41	\$315,352.28	\$279,551.77	\$300,131.56
DAM LOSSES				(\$647,984.45)	(\$618,739.47)	(\$517,589.56)	(\$533,512.59)
BALANCING ENERGY				(\$29,222.38)	(\$7,468.57)	(\$84,478.64)	(\$18,634.15)
BALANCING LOSSES				\$10,119.26	\$3,643.76	\$6,007.30	(\$29,284.72)
BALANCING CONGESTION				(\$21,819.20)	\$41,443.65	\$48,927.55	\$147,031.47
FINANCIAL IMPACT CHARGE				\$0.00	\$0.00	\$0.00	\$0.00
	5	6	7	8	9	10	11
DAM ENERGY	\$300,349.10	\$341,923.92	\$383,225.73	\$336,625.72	\$285,144.34	\$201,433.69	\$185,130.08
DAM LOSSES	(\$596,826.85)	(\$682,103.61)	(\$723,404.27)	(\$644,060.45)	(\$553,644.39)	(\$394,369.32)	(\$360,733.62)
BALANCING ENERGY	(\$14,083.41)	(\$20,079.69)	(\$52,089.73)	(\$36,096.14)	(\$8,304.94)	\$16,915.09	(\$8,134.10)
BALANCING LOSSES	\$2,254.69	\$11,795.09	\$31,303.64	\$6,991.51	\$8,124.06	(\$13,155.69)	\$1,290.59
BALANCING CONGESTION	\$2,762.72	\$13,046.88	\$181,805.49	\$161,916.49	\$55,338.23	(\$18,021.90)	\$732,173.49
FINANCIAL IMPACT CHARGE	\$0.00	\$0.00	\$0.00	\$0.00	\$0.00	\$0.00	\$0.00
	12	13	14	15	16	17	18
DAM ENERGY	\$286,637.88	\$321,441.32	\$276,015.62	\$276,700.44	\$246,916.36	\$270,935.28	\$339,784.47
DAM LOSSES	(\$542,339.35)	(\$608,344.59)	(\$530,518.73)	(\$518,131.39)	(\$481,936.86)	(\$526,981.99)	(\$641,550.08)
BALANCING ENERGY	(\$20,571.66)	(\$90,099.25)	(\$30,753.82)	(\$29,600.92)	\$9,741.83	\$43,198.03	\$12,526.02
BALANCING LOSSES	(\$3,085.28)	\$25,938.70	\$4,058.46	\$4,283.94	(\$9,162.42)	(\$40,700.19)	(\$15,224.90)
BALANCING CONGESTION	\$14,132.18	(\$13,541.94)	(\$16,534.02)	\$77,176.67	\$28,234.53	\$200,062.90	\$109,837.84
FINANCIAL IMPACT CHARGE	\$0.00	(\$30.87)	\$0.00	\$0.00	\$0.00	\$0.00	\$0.00
	19	20	21	22	23	24	25
DAM ENERGY	\$430,822.03	\$440,063.11	\$377,220.98	\$347,924.81	\$249,130.77	\$191,499.22	\$156,203.54
DAM LOSSES	(\$821,071.49)	(\$824,407.89)	(\$695,083.44)	(\$660,825.01)	(\$489,738.63)	(\$380,687.46)	(\$313,738.26)
BALANCING ENERGY	(\$8,381.43)	(\$26,778.52)	(\$59,826.01)	(\$10,380.86)	\$5,489.65	(\$16,470.58)	(\$6,723.25)
BALANCING LOSSES	(\$209.10)	\$15,280.25	\$28,404.21	(\$8,251.43)	(\$11,076.39)	\$14,250.03	\$5,825.60
BALANCING CONGESTION	\$206,410.49	\$33,199.69	\$222,358.22	\$7,139.00	\$157,042.26	\$388.62	\$506.82
FINANCIAL IMPACT CHARGE	\$0.00	\$0.00	\$0.00	(\$3.17)	(\$1,438.54)	\$0.00	\$0.00
	26	27	28	29	30	31	
DAM ENERGY	\$190,622.50	\$206,334.33	\$254,929.30	\$234,034.27	\$248,066.28	\$186,054.84	
DAM LOSSES	(\$355,388.67)	(\$392,371.20)	(\$492,852.48)	(\$463,460.70)	(\$488,043.48)	(\$362,424.52)	
BALANCING ENERGY	(\$6,612.19)	(\$15,790.16)	(\$32,043.84)	(\$8,071.52)	\$4,343.23	\$13,025.49	
BALANCING LOSSES	(\$308.16)	\$1,607.13	\$19,193.14	(\$1,674.78)	(\$12,350.30)	(\$9,350.40)	
BALANCING CONGESTION	\$55,046.28	\$92,169.97	(\$14,644.93)	\$36,545.96	\$24,321.03	\$60,506.66	
FINANCIAL IMPACT CHARGE	\$0.00	\$0.00	\$0.00	\$0.00	\$0.00	(\$11.77)	



SETTLEMENTS REPORT
August 2019 Settlement Adjustment
January 8, 2020

Initial Settlement – Market Costs Analysis

	MONDAY	TUESDAY	WEDNESDAY	THURSDAY	FRIDAY	SATURDAY	SUNDAY
				1	2	3	4
ENERGY				\$11,689,989.23	\$10,688,371.77	\$9,884,365.12	\$9,604,129.26
TRANSMISSION SERVICE				\$1,578,405.65	\$1,562,426.44	\$1,387,023.19	\$1,327,244.52
UPLIFT				\$312,388.39	\$96,025.88	\$168,113.32	\$149,465.74
RESIDUALS				(\$581,171.55)	(\$266,756.06)	(\$268,200.07)	(\$134,891.08)
ANCILLARY SERVICES				\$1,260,191.28	\$1,224,496.82	\$1,177,968.11	\$1,212,951.53
TCC				\$1,389,972.89	\$1,319,510.51	\$1,395,231.25	\$1,195,443.28
	5	6	7	8	9	10	11
ENERGY	\$10,292,355.05	\$12,186,121.26	\$13,114,417.21	\$11,409,714.46	\$8,838,812.33	\$6,250,281.10	\$5,510,803.73
TRANSMISSION SERVICE	\$1,505,919.49	\$1,656,379.31	\$1,824,941.30	\$1,123,824.28	\$906,356.05	\$853,826.53	\$773,157.03
UPLIFT	\$66,276.13	\$119,595.13	\$149,214.58	\$294,491.62	\$185,002.39	\$139,647.06	\$127,870.69
RESIDUALS	(\$306,647.73)	(\$335,549.91)	(\$178,205.74)	(\$176,668.71)	(\$214,760.10)	(\$207,294.30)	\$549,639.24
ANCILLARY SERVICES	\$1,223,233.87	\$1,244,322.93	\$1,268,382.55	\$1,217,848.58	\$1,176,782.34	\$1,043,362.75	\$1,026,073.90
TCC	\$1,204,892.39	\$1,538,111.97	\$2,084,229.16	\$645,778.14	\$325,217.61	\$478,624.02	\$369,355.78
	12	13	14	15	16	17	18
ENERGY	\$9,314,427.25	\$9,576,657.29	\$9,082,113.68	\$9,057,043.45	\$8,480,952.33	\$9,198,139.40	\$11,724,595.91
TRANSMISSION SERVICE	\$988,813.08	\$1,138,865.49	\$1,480,091.77	\$1,416,078.07	\$1,048,820.08	\$864,263.15	\$994,631.37
UPLIFT	\$62,219.37	\$11,935.83	\$64,608.11	\$92,539.16	\$99,401.66	\$117,869.47	\$191,040.30
RESIDUALS	(\$265,831.44)	(\$363,766.06)	(\$298,408.68)	(\$190,388.64)	(\$207,152.88)	(\$51,139.84)	(\$197,433.09)
ANCILLARY SERVICES	\$1,220,843.74	\$1,238,493.94	\$1,211,054.47	\$1,207,180.10	\$1,186,569.69	\$1,198,716.19	\$1,219,226.15
TCC	\$582,200.48	\$712,216.26	\$1,758,043.52	\$1,574,892.63	\$807,086.23	\$333,386.93	\$681,172.59
	19	20	21	22	23	24	25
ENERGY	\$15,609,708.62	\$15,858,891.45	\$13,388,446.98	\$12,998,029.08	\$7,632,365.18	\$5,521,132.31	\$4,665,803.30
TRANSMISSION SERVICE	\$1,201,312.69	\$1,516,704.02	\$1,488,374.20	\$1,518,077.56	\$843,160.86	\$705,067.11	\$653,906.09
UPLIFT	\$546,831.37	\$265,801.35	\$118,584.47	\$336,623.20	\$151,849.32	\$102,201.71	\$93,589.95
RESIDUALS	(\$195,069.46)	(\$363,433.93)	(\$129,216.03)	(\$329,163.91)	(\$90,908.62)	(\$191,108.96)	(\$158,035.46)
ANCILLARY SERVICES	\$1,335,471.59	\$1,281,999.07	\$1,306,006.18	\$1,275,962.04	\$1,126,367.24	\$1,025,451.24	\$1,007,712.03
TCC	\$1,047,856.70	\$1,456,079.99	\$1,530,635.74	\$1,494,846.56	\$300,921.57	\$247,558.67	\$207,734.56
	26	27	28	29	30	31	
ENERGY	\$5,633,521.68	\$6,119,271.85	\$6,934,725.68	\$7,140,306.53	\$7,412,576.57	\$5,370,024.94	
TRANSMISSION SERVICE	\$698,950.48	\$698,037.04	\$831,008.93	\$817,816.27	\$914,385.68	\$786,842.40	
UPLIFT	\$82,762.21	\$85,651.98	\$116,983.73	\$154,105.78	\$145,236.33	\$146,159.95	
RESIDUALS	(\$117,304.71)	(\$108,349.45)	(\$266,222.14)	(\$203,472.56)	(\$223,875.35)	(\$111,900.58)	
ANCILLARY SERVICES	\$1,060,568.79	\$1,075,372.96	\$1,132,419.17	\$1,127,409.95	\$1,129,896.04	\$1,039,866.20	
TCC	\$174,395.13	\$142,100.31	\$313,720.98	\$286,267.34	\$489,244.02	\$379,779.44	



SETTLEMENTS REPORT
August 2019 Settlement Adjustment
January 8, 2020

4-Month Settlement Adjustment – Market Costs Analysis

	MONDAY	TUESDAY	WEDNESDAY	THURSDAY	FRIDAY	SATURDAY	SUNDAY
				1	2	3	4
ENERGY				\$11,557,683.66	\$10,693,956.81	\$9,889,861.87	\$9,607,509.65
TRANSMISSION SERVICE				\$1,572,297.21	\$1,561,748.49	\$1,386,343.09	\$1,326,669.92
UPLIFT				\$312,388.66	\$96,025.83	\$168,113.37	\$149,465.56
RESIDUALS				(\$355,851.36)	(\$265,768.35)	(\$267,581.58)	(\$134,268.43)
ANCILLARY SERVICES				\$1,251,600.24	\$1,223,885.32	\$1,176,863.79	\$1,212,036.25
TCC				\$1,389,984.55	\$1,319,510.51	\$1,395,740.71	\$1,195,845.37
	5	6	7	8	9	10	11
ENERGY	\$10,294,423.74	\$12,188,545.33	\$13,116,293.68	\$11,411,133.71	\$8,840,859.06	\$6,253,083.63	\$5,513,078.62
TRANSMISSION SERVICE	\$1,505,133.76	\$1,655,633.22	\$1,824,107.47	\$1,123,134.32	\$905,764.60	\$853,090.40	\$772,435.90
UPLIFT	\$66,311.88	\$119,595.12	\$149,214.50	\$294,491.24	\$185,002.35	\$139,647.27	\$126,651.40
RESIDUALS	(\$305,543.75)	(\$335,417.41)	(\$179,159.14)	(\$174,622.87)	(\$213,342.70)	(\$207,198.13)	\$549,726.44
ANCILLARY SERVICES	\$1,222,483.30	\$1,243,540.39	\$1,272,151.44	\$1,215,622.70	\$1,176,012.40	\$1,040,649.24	\$1,024,741.04
TCC	\$1,204,892.39	\$1,538,113.03	\$2,079,555.68	\$647,284.66	\$325,388.40	\$480,696.55	\$370,015.98
	12	13	14	15	16	17	18
ENERGY	\$9,317,361.57	\$9,585,418.63	\$9,084,335.87	\$9,058,788.05	\$8,482,811.32	\$9,200,487.22	\$11,727,984.75
TRANSMISSION SERVICE	\$988,108.36	\$1,138,402.79	\$1,479,465.91	\$1,415,429.22	\$1,048,114.71	\$863,673.45	\$994,000.21
UPLIFT	\$62,218.35	\$11,934.57	\$64,608.27	\$92,540.03	\$99,405.10	\$117,875.21	\$191,048.73
RESIDUALS	(\$265,226.23)	(\$364,636.63)	(\$297,732.49)	(\$189,571.26)	(\$206,206.56)	(\$53,485.97)	(\$194,626.65)
ANCILLARY SERVICES	\$1,218,501.35	\$1,242,107.73	\$1,210,397.14	\$1,206,310.39	\$1,185,714.09	\$1,198,084.46	\$1,218,657.05
TCC	\$583,871.22	\$708,214.00	\$1,758,078.74	\$1,575,074.03	\$807,243.33	\$333,523.16	\$681,213.76
	19	20	21	22	23	24	25
ENERGY	\$15,611,769.58	\$15,861,868.47	\$13,389,953.70	\$12,993,585.01	\$7,633,468.04	\$5,522,950.41	\$4,667,272.42
TRANSMISSION SERVICE	\$1,200,721.49	\$1,516,085.84	\$1,487,625.38	\$1,517,415.87	\$842,239.82	\$704,390.88	\$653,213.34
UPLIFT	\$546,845.54	\$265,801.35	\$118,584.22	\$372,062.20	\$151,849.07	\$102,201.75	\$93,589.63
RESIDUALS	(\$192,429.50)	(\$362,643.36)	(\$126,926.04)	(\$324,396.66)	(\$90,590.88)	(\$191,020.17)	(\$157,925.55)
ANCILLARY SERVICES	\$1,304,215.98	\$1,281,376.68	\$1,318,167.57	\$1,292,659.89	\$1,125,315.26	\$1,024,934.10	\$1,006,560.40
TCC	\$1,078,600.80	\$1,456,102.41	\$1,517,782.26	\$1,477,263.00	\$301,079.08	\$247,997.85	\$208,333.29
	26	27	28	29	30	31	
ENERGY	\$5,635,825.23	\$6,122,136.80	\$6,935,210.91	\$7,140,218.33	\$7,415,218.12	\$5,372,323.76	
TRANSMISSION SERVICE	\$698,277.44	\$697,190.44	\$830,183.27	\$816,996.15	\$913,672.80	\$786,285.88	
UPLIFT	\$82,762.44	\$85,646.55	\$116,983.74	\$154,105.61	\$145,458.67	\$146,159.64	
RESIDUALS	(\$116,640.24)	(\$108,049.93)	(\$265,418.81)	(\$202,626.77)	(\$223,663.24)	(\$112,199.70)	
ANCILLARY SERVICES	\$1,059,633.12	\$1,074,385.43	\$1,132,411.22	\$1,125,862.57	\$1,129,508.34	\$1,037,595.50	
TCC	\$174,692.62	\$142,241.76	\$312,887.99	\$286,959.17	\$488,875.86	\$381,654.48	

