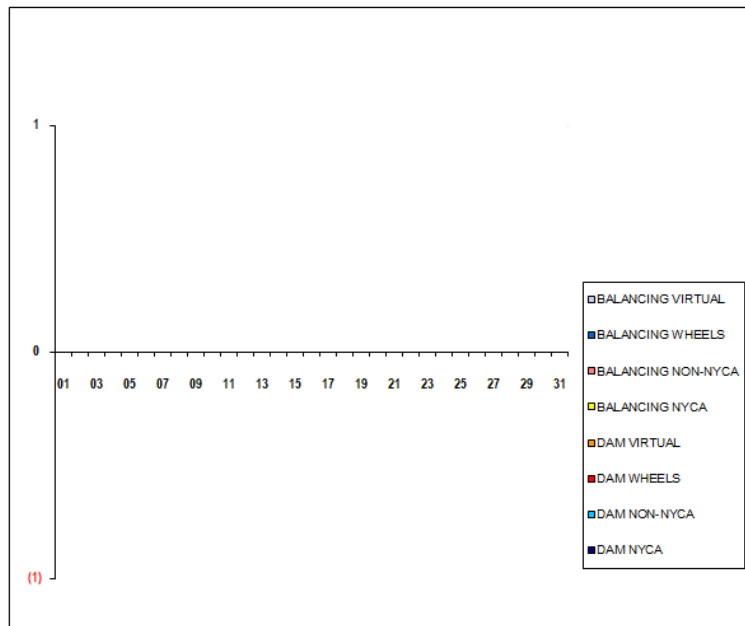


SETTLEMENTS REPORT  
 August 2018 Close-Out Settlement  
 May 7, 2019

Close-Out Settlement – Market Supply Delta Analysis

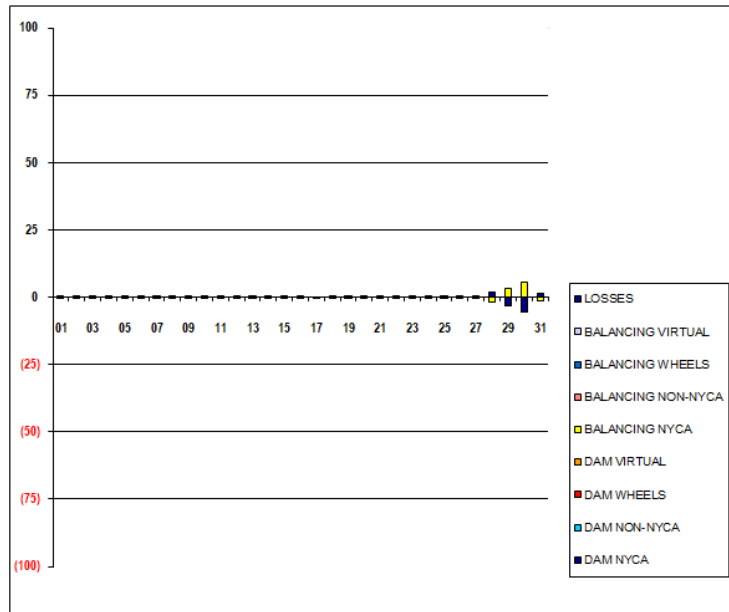
	MONDAY	TUESDAY	WEDNESDAY	THURSDAY	FRIDAY	SATURDAY	SUNDAY
			1	2	3	4	5
DAM NYCA			0	0	0	0	0
DAM NON-NYCA			0	0	0	0	0
DAM WHEELS			0	0	0	0	0
DAM VIRTUAL			0	0	0	0	0
BALANCING NYCA			0	0	0	0	0
BALANCING NON-NYCA			0	0	0	0	0
BALANCING WHEELS			0	0	0	0	0
BALANCING VIRTUAL			0	0	0	0	0
	6	7	8	9	10	11	12
DAM NYCA	0	0	0	0	0	0	0
DAM NON-NYCA	0	0	0	0	0	0	0
DAM WHEELS	0	0	0	0	0	0	0
DAM VIRTUAL	0	0	0	0	0	0	0
BALANCING NYCA	0	0	0	0	0	0	0
BALANCING NON-NYCA	0	0	0	0	0	0	0
BALANCING WHEELS	0	0	0	0	0	0	0
BALANCING VIRTUAL	0	0	0	0	0	0	0
	13	14	15	16	17	18	19
DAM NYCA	0	0	0	0	0	0	0
DAM NON-NYCA	0	0	0	0	0	0	0
DAM WHEELS	0	0	0	0	0	0	0
DAM VIRTUAL	0	0	0	0	0	0	0
BALANCING NYCA	0	0	0	0	0	0	0
BALANCING NON-NYCA	0	0	0	0	0	0	0
BALANCING WHEELS	0	0	0	0	0	0	0
BALANCING VIRTUAL	0	0	0	0	0	0	0
	20	21	22	23	24	25	26
DAM NYCA	0	0	0	0	0	0	0
DAM NON-NYCA	0	0	0	0	0	0	0
DAM WHEELS	0	0	0	0	0	0	0
DAM VIRTUAL	0	0	0	0	0	0	0
BALANCING NYCA	0	0	0	0	0	0	0
BALANCING NON-NYCA	0	0	0	0	0	0	0
BALANCING WHEELS	0	0	0	0	0	0	0
BALANCING VIRTUAL	0	0	0	0	0	0	0
	27	28	29	30	31		
DAM NYCA	0	0	0	0	0		
DAM NON-NYCA	0	0	0	0	0		
DAM WHEELS	0	0	0	0	0		
DAM VIRTUAL	0	0	0	0	0		
BALANCING NYCA	0	0	0	0	0		
BALANCING NON-NYCA	0	0	0	0	0		
BALANCING WHEELS	0	0	0	0	0		
BALANCING VIRTUAL	0	0	0	0	0		



SETTLEMENTS REPORT  
 August 2018 Close-Out Settlement  
 May 7, 2019

Close-Out Settlement – Market Withdrawals Delta Analysis

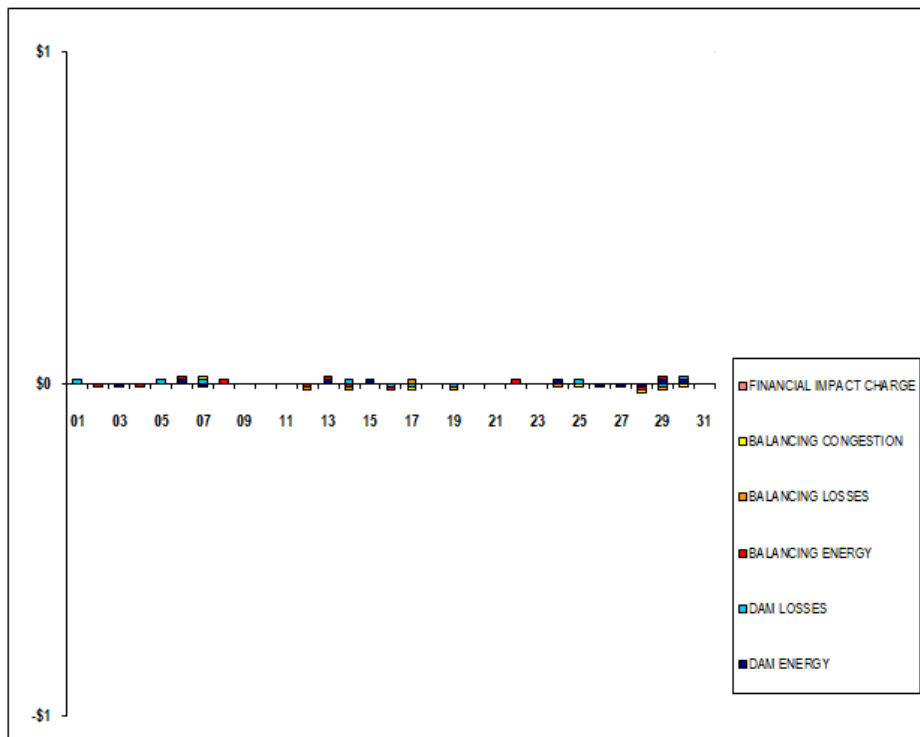
	MONDAY	TUESDAY	WEDNESDAY	THURSDAY	FRIDAY	SATURDAY	SUNDAY
			1	2	3	4	5
DAM NYCA			0	0	0	0	0
DAM NON-NYCA			0	0	0	0	0
DAM WHEELS			0	0	0	0	0
DAM VIRTUAL			0	0	0	0	0
BALANCING NYCA			0	(0)	(0)	(0)	(0)
BALANCING NON-NYCA			0	0	0	0	0
BALANCING WHEELS			0	0	0	0	0
BALANCING VIRTUAL			0	0	0	0	0
UFE/LOSSES			(0)	0	0	0	0
	6	7	8	9	10	11	12
DAM NYCA	0	0	0	0	0	0	0
DAM NON-NYCA	0	0	0	0	0	0	0
DAM WHEELS	0	0	0	0	0	0	0
DAM VIRTUAL	0	0	0	0	0	0	0
BALANCING NYCA	(0)	(0)	(0)	0	(0)	(0)	0
BALANCING NON-NYCA	0	0	0	0	0	0	0
BALANCING WHEELS	0	0	0	0	0	0	0
BALANCING VIRTUAL	0	0	0	0	0	0	0
UFE/LOSSES	0	0	0	(0)	0	0	(0)
	13	14	15	16	17	18	19
DAM NYCA	0	0	0	0	0	0	0
DAM NON-NYCA	0	0	0	0	0	0	0
DAM WHEELS	0	0	0	0	0	0	0
DAM VIRTUAL	0	0	0	0	0	0	0
BALANCING NYCA	0	(0)	(0)	0	0	(0)	(0)
BALANCING NON-NYCA	0	0	0	0	0	0	0
BALANCING WHEELS	0	0	0	0	0	0	0
BALANCING VIRTUAL	0	0	0	0	0	0	0
UFE/LOSSES	(0)	0	0	(0)	(0)	0	0
	20	21	22	23	24	25	26
DAM NYCA	0	0	0	0	0	0	0
DAM NON-NYCA	0	0	0	0	0	0	0
DAM WHEELS	0	0	0	0	0	0	0
DAM VIRTUAL	0	0	0	0	0	0	0
BALANCING NYCA	(0)	(0)	0	(0)	0	(0)	(0)
BALANCING NON-NYCA	0	0	0	0	0	0	0
BALANCING WHEELS	0	0	0	0	0	0	0
BALANCING VIRTUAL	0	0	0	0	0	0	0
UFE/LOSSES	0	0	(0)	0	(0)	0	0
	27	28	29	30	31		
DAM NYCA	0	0	0	0	0		
DAM NON-NYCA	0	0	0	0	0		
DAM WHEELS	0	0	0	0	0		
DAM VIRTUAL	0	0	0	0	0		
BALANCING NYCA	0	(2)	3	5	(1)		
BALANCING NON-NYCA	0	0	0	0	0		
BALANCING WHEELS	0	0	0	0	0		
BALANCING VIRTUAL	0	0	0	0	0		
UFE/LOSSES	(0)	2	(3)	(5)	1		



SETTLEMENTS REPORT  
 August 2018 Close-Out Settlement  
 May 7, 2019

Close-Out Settlement – Market Residuals Delta Analysis

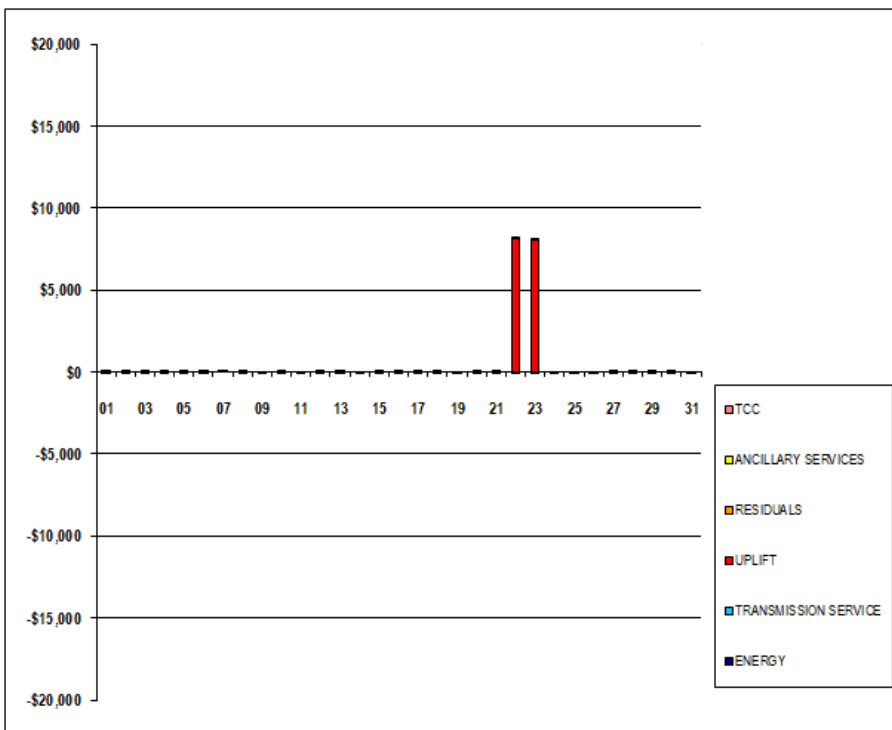
	MONDAY	TUESDAY	WEDNESDAY	THURSDAY	FRIDAY	SATURDAY	SUNDAY
			1	2	3	4	5
DAM ENERGY			\$0.00	\$0.00	(\$0.01)	\$0.00	\$0.00
DAM LOSSES			\$0.01	\$0.00	\$0.00	\$0.00	\$0.01
BALANCING ENERGY			\$0.00	(\$0.01)	\$0.00	(\$0.01)	\$0.00
BALANCING LOSSES			\$0.00	\$0.00	\$0.00	\$0.00	\$0.00
BALANCING CONGESTION			\$0.00	\$0.00	\$0.00	\$0.00	\$0.00
FINANCIAL IMPACT CHARGE			\$0.00	\$0.00	\$0.00	\$0.00	\$0.00
	6	7	8	9	10	11	12
DAM ENERGY	\$0.01	(\$0.01)	\$0.00	\$0.00	\$0.00	\$0.00	\$0.00
DAM LOSSES	\$0.00	\$0.01	\$0.00	\$0.00	\$0.00	\$0.00	\$0.00
BALANCING ENERGY	\$0.01	\$0.00	\$0.01	\$0.00	\$0.00	\$0.00	(\$0.01)
BALANCING LOSSES	\$0.00	\$0.00	\$0.00	\$0.00	\$0.00	\$0.00	(\$0.01)
BALANCING CONGESTION	\$0.00	\$0.01	\$0.00	\$0.00	\$0.00	\$0.00	\$0.00
FINANCIAL IMPACT CHARGE	\$0.00	\$0.00	\$0.00	\$0.00	\$0.00	\$0.00	\$0.00
	13	14	15	16	17	18	19
DAM ENERGY	\$0.01	\$0.00	\$0.01	\$0.00	\$0.00	\$0.00	\$0.00
DAM LOSSES	\$0.00	\$0.01	\$0.00	(\$0.01)	(\$0.01)	\$0.00	(\$0.01)
BALANCING ENERGY	\$0.01	(\$0.01)	\$0.00	(\$0.01)	\$0.00	\$0.00	\$0.00
BALANCING LOSSES	\$0.00	(\$0.01)	\$0.00	\$0.00	\$0.01	\$0.00	(\$0.01)
BALANCING CONGESTION	\$0.00	\$0.00	\$0.00	\$0.00	(\$0.01)	\$0.00	\$0.00
FINANCIAL IMPACT CHARGE	\$0.00	\$0.00	\$0.00	\$0.00	\$0.00	\$0.00	\$0.00
	20	21	22	23	24	25	26
DAM ENERGY	\$0.00	\$0.00	\$0.00	\$0.00	\$0.01	\$0.00	(\$0.01)
DAM LOSSES	\$0.00	\$0.00	\$0.00	\$0.00	\$0.00	\$0.01	\$0.00
BALANCING ENERGY	\$0.00	\$0.00	\$0.01	\$0.00	\$0.00	\$0.00	\$0.00
BALANCING LOSSES	\$0.00	\$0.00	\$0.00	\$0.00	(\$0.01)	\$0.00	\$0.00
BALANCING CONGESTION	\$0.00	\$0.00	\$0.00	\$0.00	\$0.00	(\$0.01)	\$0.00
FINANCIAL IMPACT CHARGE	\$0.00	\$0.00	\$0.00	\$0.00	\$0.00	\$0.00	\$0.00
	27	28	29	30	31		
DAM ENERGY	(\$0.01)	(\$0.01)	\$0.01	\$0.01	\$0.00		
DAM LOSSES	\$0.00	\$0.00	(\$0.01)	\$0.01	\$0.00		
BALANCING ENERGY	\$0.00	(\$0.01)	\$0.01	\$0.00	\$0.00		
BALANCING LOSSES	\$0.00	\$0.00	(\$0.01)	\$0.00	\$0.00		
BALANCING CONGESTION	\$0.00	(\$0.01)	\$0.00	(\$0.01)	\$0.00		
FINANCIAL IMPACT CHARGE	\$0.00	\$0.00	\$0.00	\$0.00	\$0.00		



SETTLEMENTS REPORT  
 August 2018 Close-Out Settlement  
 May 7, 2019

Close-Out Settlement – Market Costs Delta Analysis

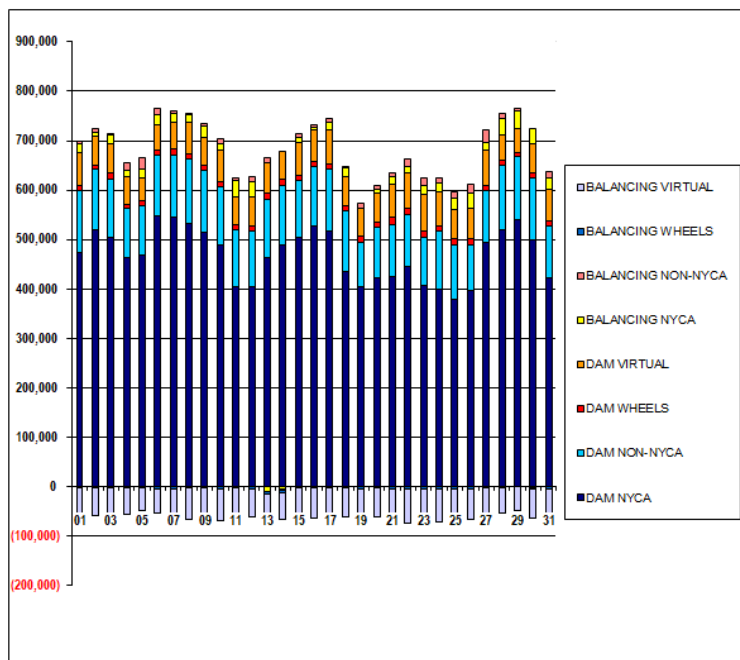
	MONDAY	TUESDAY	WEDNESDAY	THURSDAY	FRIDAY	SATURDAY	SUNDAY
			1	2	3	4	5
ENERGY			(\$0.23)	\$0.23	\$0.05	\$0.18	\$0.38
TRANSMISSION SERVICE			(\$1.08)	\$0.69	(\$0.36)	(\$0.10)	\$1.94
UPLIFT			\$0.00	\$0.00	\$0.00	(\$0.05)	(\$0.02)
RESIDUALS			\$0.01	(\$0.01)	(\$0.01)	(\$0.01)	\$0.01
ANCILLARY SERVICES			(\$1.61)	\$1.04	(\$0.54)	(\$0.14)	\$2.92
TCC			\$0.00	\$0.00	\$0.00	\$0.00	\$0.00
	6	7	8	9	10	11	12
ENERGY	(\$0.19)	\$0.00	(\$0.10)	(\$0.29)	(\$0.03)	(\$0.02)	\$0.10
TRANSMISSION SERVICE	\$2.49	\$2.13	\$1.57	(\$1.43)	(\$0.30)	(\$1.46)	(\$2.93)
UPLIFT	\$0.00	\$0.00	(\$0.01)	\$0.00	\$0.05	\$0.00	\$0.02
RESIDUALS	\$0.02	\$0.01	\$0.01	\$0.00	\$0.00	\$0.00	(\$0.02)
ANCILLARY SERVICES	\$3.73	\$3.18	\$2.33	(\$2.15)	(\$0.44)	(\$2.20)	(\$4.40)
TCC	\$0.00	\$0.00	\$0.00	\$0.00	\$0.00	\$0.00	\$0.00
	13	14	15	16	17	18	19
ENERGY	\$0.31	(\$0.04)	\$0.09	\$0.05	\$0.26	(\$0.12)	(\$0.14)
TRANSMISSION SERVICE	(\$0.94)	(\$1.29)	(\$0.20)	\$0.95	\$0.83	\$0.01	(\$1.11)
UPLIFT	(\$0.01)	(\$0.01)	\$0.00	(\$0.01)	\$0.00	\$0.00	\$0.00
RESIDUALS	\$0.02	(\$0.01)	\$0.01	(\$0.02)	(\$0.01)	\$0.00	(\$0.02)
ANCILLARY SERVICES	(\$1.42)	(\$1.92)	(\$0.30)	\$1.43	\$1.24	\$0.00	(\$1.66)
TCC	\$0.00	\$0.00	\$0.00	\$0.00	\$0.00	\$0.00	\$0.00
	20	21	22	23	24	25	26
ENERGY	\$0.11	(\$0.23)	(\$0.26)	(\$0.15)	(\$0.24)	(\$0.24)	(\$0.12)
TRANSMISSION SERVICE	(\$0.03)	\$0.64	(\$0.96)	\$0.08	(\$2.71)	(\$2.07)	(\$3.22)
UPLIFT	(\$0.01)	\$0.00	\$8,082.45	\$8,059.76	(\$0.03)	(\$0.01)	\$0.00
RESIDUALS	\$0.00	\$0.00	\$0.01	\$0.00	\$0.00	\$0.00	(\$0.01)
ANCILLARY SERVICES	(\$0.05)	\$0.98	(\$1.44)	\$0.11	(\$4.05)	(\$3.10)	(\$4.82)
TCC	\$0.00	\$0.00	\$0.00	\$0.00	\$0.00	\$0.00	\$0.00
	27	28	29	30	31		
ENERGY	(\$0.41)	\$0.17	\$0.00	(\$0.23)	(\$0.13)		
TRANSMISSION SERVICE	\$0.08	\$4.00	\$5.45	\$2.96	(\$1.08)		
UPLIFT	\$0.01	\$0.00	(\$0.01)	(\$0.05)	\$0.00		
RESIDUALS	(\$0.01)	(\$0.03)	\$0.00	\$0.01	\$0.00		
ANCILLARY SERVICES	\$0.11	\$5.01	\$8.19	\$4.43	(\$1.62)		
TCC	\$0.00	\$0.00	\$0.00	\$0.00	\$0.00		



SETTLEMENTS REPORT  
 August 2018 Close-Out Settlement  
 May 7, 2019

4-Month Settlement Adjustment – Market Supply Analysis

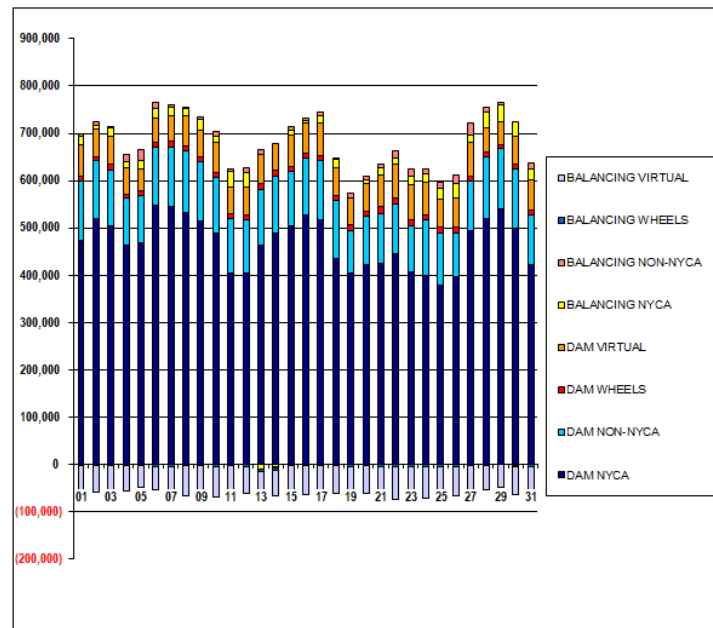
	MONDAY	TUESDAY	WEDNESDAY	THURSDAY	FRIDAY	SATURDAY	SUNDAY
			1	2	3	4	5
DAM NYCA			472,527	520,474	503,846	464,022	469,474
DAM NON-NYCA			127,530	121,106	119,056	98,959	98,701
DAM WHEELS			9,951	9,346	11,118	9,040	9,392
DAM VIRTUAL			64,710	57,360	59,962	54,446	45,670
BALANCING NYCA			16,782	6,993	16,394	13,230	19,350
BALANCING NON-NYCA			4,552	7,551	1,541	15,091	21,809
BALANCING WHEELS			(2,751)	(2,146)	(3,918)	(1,840)	(2,192)
BALANCING VIRTUAL			(64,710)	(57,360)	(59,962)	(54,446)	(45,670)
	6	7	8	9	10	11	12
DAM NYCA	547,261	544,409	531,670	514,177	488,226	403,731	404,450
DAM NON-NYCA	123,049	126,443	130,804	126,193	117,471	116,092	111,665
DAM WHEELS	11,647	12,346	11,433	11,034	11,858	11,109	12,340
DAM VIRTUAL	48,922	55,072	63,806	55,071	63,715	55,368	57,992
BALANCING NYCA	22,806	16,148	13,705	24,353	19,533	32,250	29,829
BALANCING NON-NYCA	10,505	6,033	608	4,749	9,408	6,766	10,233
BALANCING WHEELS	(4,447)	(5,146)	(4,233)	(3,834)	(4,658)	(3,909)	(5,140)
BALANCING VIRTUAL	(48,922)	(55,072)	(63,806)	(55,071)	(63,715)	(55,368)	(57,992)
	13	14	15	16	17	18	19
DAM NYCA	462,776	488,779	504,546	528,245	516,525	433,899	405,480
DAM NON-NYCA	118,705	120,587	115,307	120,406	126,156	124,515	87,628
DAM WHEELS	11,834	12,277	10,337	9,807	10,643	9,717	12,689
DAM VIRTUAL	62,694	56,135	66,320	63,013	68,757	59,403	56,855
BALANCING NYCA	(9,934)	(4,325)	9,815	4,348	15,352	16,865	1,475
BALANCING NON-NYCA	10,478	(2,739)	7,107	6,534	7,213	3,655	9,684
BALANCING WHEELS	(4,634)	(5,077)	(3,137)	(2,607)	(3,443)	(2,517)	(5,489)
BALANCING VIRTUAL	(62,694)	(56,135)	(66,320)	(63,013)	(68,757)	(59,403)	(56,855)
	20	21	22	23	24	25	26
DAM NYCA	422,455	425,953	445,737	405,893	398,385	378,343	395,641
DAM NON-NYCA	101,273	104,183	105,604	99,066	117,405	109,747	93,315
DAM WHEELS	11,289	14,049	12,107	13,010	12,618	13,674	12,081
DAM VIRTUAL	58,737	66,490	70,131	73,440	67,037	59,257	61,169
BALANCING NYCA	6,819	17,192	12,780	17,920	19,794	22,114	31,059
BALANCING NON-NYCA	7,328	5,890	16,962	14,339	9,510	12,396	18,231
BALANCING WHEELS	(4,089)	(6,849)	(4,907)	(5,810)	(5,418)	(6,474)	(4,881)
BALANCING VIRTUAL	(58,737)	(66,490)	(70,131)	(73,440)	(67,037)	(59,257)	(61,169)
	27	28	29	30	31		
DAM NYCA	494,130	519,836	540,768	498,851	422,190		
DAM NON-NYCA	103,529	130,080	126,455	126,668	104,129		
DAM WHEELS	10,663	10,516	8,258	10,505	11,979		
DAM VIRTUAL	72,174	51,636	49,147	57,743	64,111		
BALANCING NYCA	16,575	32,810	35,184	31,451	21,255		
BALANCING NON-NYCA	24,985	9,233	6,617	(3,384)	13,461		
BALANCING WHEELS	(3,463)	(3,616)	(1,056)	(3,305)	(4,779)		
BALANCING VIRTUAL	(72,174)	(51,636)	(49,147)	(57,743)	(64,111)		



SETTLEMENTS REPORT  
 August 2018 Close-Out Settlement  
 May 7, 2019

Close-Out Settlement – Market Supply Analysis

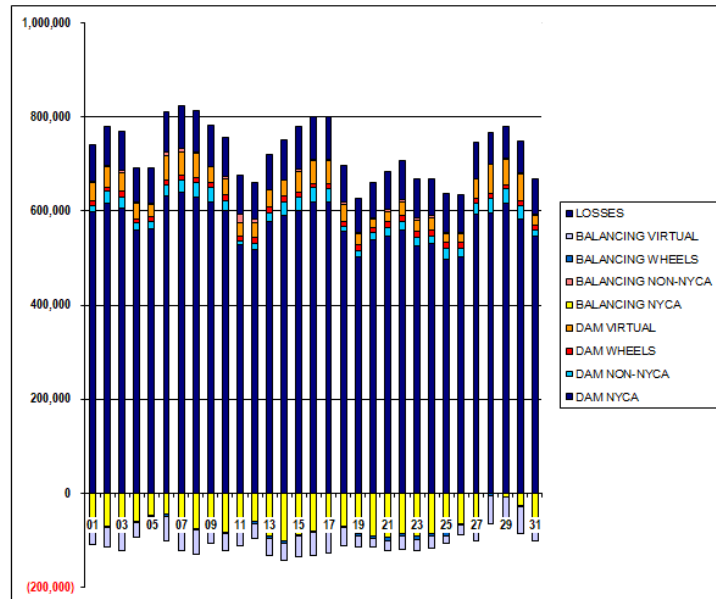
	MONDAY	TUESDAY	WEDNESDAY	THURSDAY	FRIDAY	SATURDAY	SUNDAY
			1	2	3	4	5
DAM NYCA			472,527	520,474	503,846	464,022	469,474
DAM NON-NYCA			127,530	121,106	119,056	98,959	99,701
DAM WHEELS			9,951	9,346	11,118	9,040	9,392
DAM VIRTUAL			64,710	57,360	59,962	54,446	45,670
BALANCING NYCA			18,782	8,993	16,394	13,230	19,350
BALANCING NON-NYCA			4,552	7,551	1,541	15,091	21,809
BALANCING WHEELS			(2,751)	(2,146)	(3,918)	(1,840)	(2,192)
BALANCING VIRTUAL			(64,710)	(57,360)	(59,962)	(54,446)	(45,670)
	6	7	8	9	10	11	12
DAM NYCA	547,261	544,409	531,670	514,177	488,226	403,731	404,450
DAM NON-NYCA	123,049	126,443	130,804	126,193	117,471	116,092	111,685
DAM WHEELS	11,647	12,346	11,433	11,034	11,858	11,109	12,340
DAM VIRTUAL	48,922	55,072	63,806	55,071	63,715	55,368	57,992
BALANCING NYCA	22,806	16,148	13,705	24,353	13,533	32,250	29,829
BALANCING NON-NYCA	10,505	6,033	608	4,749	9,408	6,766	10,233
BALANCING WHEELS	(4,447)	(5,148)	(4,233)	(3,834)	(4,659)	(3,909)	(5,140)
BALANCING VIRTUAL	(48,922)	(55,072)	(63,806)	(55,071)	(63,715)	(55,368)	(57,992)
	13	14	15	16	17	18	19
DAM NYCA	462,776	488,779	504,546	528,245	516,525	433,899	405,480
DAM NON-NYCA	116,705	120,587	115,307	120,406	126,156	124,515	87,628
DAM WHEELS	11,834	12,277	10,337	9,807	10,643	9,717	12,689
DAM VIRTUAL	62,694	56,135	66,320	63,013	68,757	59,403	56,855
BALANCING NYCA	(9,934)	(4,925)	9,915	4,348	15,352	16,865	1,475
BALANCING NON-NYCA	10,478	(2,739)	7,107	6,534	7,213	3,655	9,684
BALANCING WHEELS	(4,634)	(5,077)	(3,137)	(2,607)	(3,443)	(2,517)	(5,489)
BALANCING VIRTUAL	(62,694)	(56,135)	(66,320)	(63,013)	(68,757)	(59,403)	(56,855)
	20	21	22	23	24	25	26
DAM NYCA	422,455	425,953	445,737	405,893	398,385	378,343	395,641
DAM NON-NYCA	101,273	104,183	105,604	99,066	117,405	109,747	93,315
DAM WHEELS	11,289	14,049	12,107	13,010	12,618	13,674	12,081
DAM VIRTUAL	58,737	66,490	70,131	73,440	67,037	59,257	61,169
BALANCING NYCA	6,819	17,192	12,780	17,920	19,794	22,114	31,059
BALANCING NON-NYCA	7,328	5,890	16,962	14,339	9,510	12,386	18,231
BALANCING WHEELS	(4,089)	(6,849)	(4,907)	(5,810)	(5,418)	(6,474)	(4,881)
BALANCING VIRTUAL	(58,737)	(66,490)	(70,131)	(73,440)	(67,037)	(59,257)	(61,169)
	27	28	29	30	31		
DAM NYCA	484,130	519,836	540,768	498,851	422,190		
DAM NON-NYCA	103,529	130,080	126,455	126,668	104,129		
DAM WHEELS	10,663	10,516	8,256	10,505	11,979		
DAM VIRTUAL	72,174	51,636	49,147	57,743	64,111		
BALANCING NYCA	16,575	32,810	35,184	31,451	21,255		
BALANCING NON-NYCA	24,985	9,233	6,817	(3,384)	13,481		
BALANCING WHEELS	(3,463)	(3,618)	(1,056)	(3,305)	(4,779)		
BALANCING VIRTUAL	(72,174)	(51,636)	(49,147)	(57,743)	(64,111)		



SETTLEMENTS REPORT  
 August 2018 Close-Out Settlement  
 May 7, 2019

4-Month Settlement Adjustment – Market Withdrawals Analysis

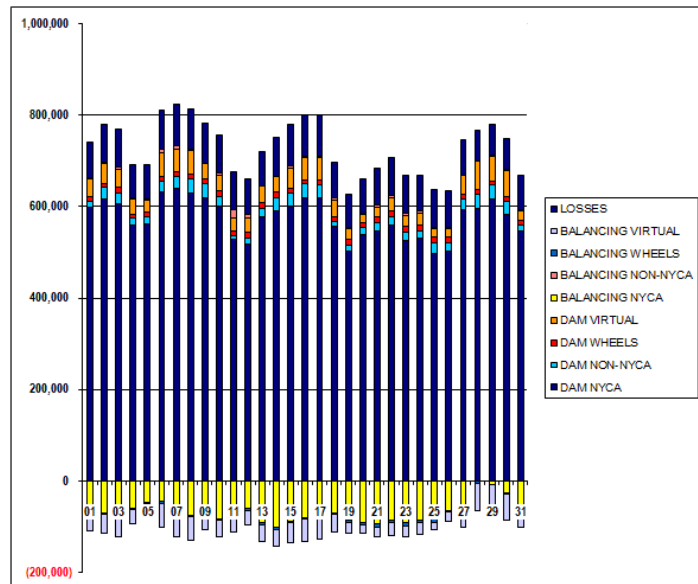
	MONDAY	TUESDAY	WEDNESDAY	THURSDAY	FRIDAY	SATURDAY	SUNDAY
			1	2	3	4	5
DAM NYCA			598,956	617,022	607,223	560,054	561,537
DAM NON-NYCA			13,141	24,394	23,206	14,662	16,297
DAM WHEELS			9,951	9,346	11,116	9,040	9,392
DAM VIRTUAL			39,187	43,457	39,201	31,638	26,115
BALANCING NYCA			(67,503)	(70,087)	(78,885)	(60,976)	(47,015)
BALANCING NON-NYCA			2,945	1,629	4,740	4,232	3,920
BALANCING WHEELS			(2,751)	(2,146)	(3,918)	(1,840)	(2,192)
BALANCING VIRTUAL			(39,187)	(43,457)	(39,201)	(31,638)	(26,115)
UFE/LOSSES			75,853	85,167	84,553	73,330	75,595
	6	7	8	9	10	11	12
DAM NYCA	631,732	639,224	630,760	619,313	599,746	528,831	519,052
DAM NON-NYCA	23,159	25,612	29,204	29,894	23,203	7,888	12,379
DAM WHEELS	11,647	12,346	11,433	11,034	11,858	11,109	12,340
DAM VIRTUAL	51,375	48,093	51,554	33,284	33,864	26,575	32,021
BALANCING NYCA	(45,459)	(70,095)	(75,086)	(69,256)	(82,837)	(80,695)	(59,352)
BALANCING NON-NYCA	5,981	7,094	2,976	800	3,860	18,373	6,728
BALANCING WHEELS	(4,447)	(5,146)	(4,233)	(3,834)	(4,658)	(3,909)	(5,140)
BALANCING VIRTUAL	(51,375)	(48,093)	(51,554)	(33,284)	(33,864)	(26,575)	(32,021)
UFE/LOSSES	87,209	91,199	88,933	88,720	84,667	84,442	77,371
	13	14	15	16	17	18	19
DAM NYCA	577,915	589,717	600,157	619,728	620,228	556,925	502,998
DAM NON-NYCA	18,482	29,264	30,632	29,616	28,186	11,105	12,926
DAM WHEELS	11,834	12,277	10,337	9,807	10,643	9,717	12,589
DAM VIRTUAL	36,238	34,362	43,911	49,403	48,567	37,079	23,739
BALANCING NYCA	(90,474)	(103,095)	(87,960)	(81,789)	(76,547)	(71,580)	(85,017)
BALANCING NON-NYCA	(402)	700	3,859	2,102	2,231	5,117	2,326
BALANCING WHEELS	(4,634)	(5,077)	(3,137)	(2,607)	(3,443)	(2,517)	(5,489)
BALANCING VIRTUAL	(36,238)	(34,362)	(43,911)	(49,403)	(48,567)	(37,079)	(23,739)
UFE/LOSSES	76,504	85,716	90,087	89,877	91,148	77,367	71,035
	20	21	22	23	24	25	26
DAM NYCA	539,102	546,338	559,729	524,611	530,777	497,584	501,946
DAM NON-NYCA	14,459	18,249	19,117	18,303	16,677	21,972	18,974
DAM WHEELS	11,289	14,049	12,107	13,010	12,618	13,674	12,081
DAM VIRTUAL	18,858	21,060	29,453	24,823	24,712	17,269	18,869
BALANCING NYCA	(92,199)	(95,359)	(85,432)	(92,725)	(87,215)	(84,269)	(64,386)
BALANCING NON-NYCA	2,190	3,568	2,922	4,481	4,813	3,881	3,121
BALANCING WHEELS	(4,089)	(6,849)	(4,907)	(5,810)	(5,418)	(6,474)	(4,881)
BALANCING VIRTUAL	(18,858)	(21,060)	(29,453)	(24,823)	(24,712)	(17,269)	(18,869)
UFE/LOSSES	74,323	80,421	84,746	82,549	80,042	83,432	78,590
	27	28	29	30	31		
DAM NYCA	594,087	596,165	617,074	581,851	545,879		
DAM NON-NYCA	22,356	31,476	31,435	29,699	12,998		
DAM WHEELS	10,863	10,516	8,256	10,505	11,979		
DAM VIRTUAL	40,956	60,276	53,803	56,395	19,970		
BALANCING NYCA	(54,807)	(1,768)	(7,511)	(26,917)	(75,943)		
BALANCING NON-NYCA	(1,471)	745	1,841	2,852	2,726		
BALANCING WHEELS	(3,463)	(3,616)	(1,056)	(3,305)	(4,779)		
BALANCING VIRTUAL	(40,956)	(60,276)	(53,803)	(56,395)	(19,970)		
UFE/LOSSES	79,054	66,986	67,995	66,948	75,395		



SETTLEMENTS REPORT  
 August 2018 Close-Out Settlement  
 May 7, 2019

Close-Out Settlement – Market Withdrawals Analysis

	MONDAY	TUESDAY	WEDNESDAY	THURSDAY	FRIDAY	SATURDAY	SUNDAY
			1	2	3	4	5
DAM NYCA			598,956	617,022	607,223	560,054	561,537
DAM NON-NYCA			13,141	24,394	23,206	14,662	16,297
DAM WHEELS			9,951	9,346	11,118	9,040	9,392
DAM VIRTUAL			39,187	43,457	39,201	31,638	26,115
BALANCING NYCA			(67,503)	(70,087)	(78,885)	(60,976)	(47,015)
BALANCING NON-NYCA			2,945	1,629	4,740	4,232	3,920
BALANCING WHEELS			(2,751)	(2,146)	(3,918)	(1,840)	(2,192)
BALANCING VIRTUAL			(39,187)	(43,457)	(39,201)	(31,638)	(26,115)
UFE/LOSSES			75,853	85,167	84,563	73,330	75,965
	6	7	8	9	10	11	12
DAM NYCA	631,732	639,224	630,760	619,313	599,746	528,831	519,052
DAM NON-NYCA	23,159	25,612	29,204	29,894	23,203	7,888	12,379
DAM WHEELS	11,647	12,346	11,433	11,034	11,858	11,109	12,340
DAM VIRTUAL	51,375	48,093	51,554	33,284	33,864	26,575	32,021
BALANCING NYCA	(45,459)	(70,095)	(75,086)	(69,256)	(82,837)	(80,695)	(59,352)
BALANCING NON-NYCA	6,981	7,094	2,976	800	3,860	18,373	6,728
BALANCING WHEELS	(4,447)	(5,146)	(4,233)	(3,834)	(4,658)	(3,909)	(5,140)
BALANCING VIRTUAL	(51,375)	(48,093)	(51,554)	(33,284)	(33,864)	(26,575)	(32,021)
UFE/LOSSES	87,209	91,199	88,933	88,720	84,667	84,442	77,371
	13	14	15	16	17	18	19
DAM NYCA	577,915	589,717	600,157	619,728	620,228	556,925	502,998
DAM NON-NYCA	18,482	29,264	30,632	29,616	28,186	11,105	12,926
DAM WHEELS	11,834	12,277	10,337	9,807	10,643	9,717	12,689
DAM VIRTUAL	36,238	34,362	43,911	49,403	48,567	37,079	23,739
BALANCING NYCA	(90,474)	(103,095)	(87,960)	(81,789)	(76,547)	(71,580)	(85,017)
BALANCING NON-NYCA	(602)	700	3,859	2,102	2,231	5,117	2,326
BALANCING WHEELS	(4,634)	(5,077)	(3,137)	(2,807)	(3,443)	(2,517)	(5,489)
BALANCING VIRTUAL	(36,238)	(34,362)	(43,911)	(49,403)	(48,567)	(37,079)	(23,739)
UFE/LOSSES	76,504	85,716	90,087	89,877	91,148	77,367	71,035
	20	21	22	23	24	25	26
DAM NYCA	539,102	546,338	559,729	524,611	530,777	497,584	501,946
DAM NON-NYCA	14,459	18,249	19,117	18,303	16,677	21,972	18,974
DAM WHEELS	11,289	14,049	12,107	13,010	12,618	13,674	12,081
DAM VIRTUAL	18,858	21,060	29,453	24,823	24,712	17,269	18,869
BALANCING NYCA	(92,199)	(95,359)	(85,432)	(92,725)	(87,215)	(84,269)	(64,386)
BALANCING NON-NYCA	2,190	3,568	2,922	4,481	4,813	3,881	3,121
BALANCING WHEELS	(4,089)	(6,849)	(4,907)	(5,810)	(5,418)	(6,474)	(4,881)
BALANCING VIRTUAL	(18,858)	(21,060)	(29,453)	(24,823)	(24,712)	(17,269)	(18,869)
UFE/LOSSES	74,323	80,421	84,746	82,549	80,042	83,432	78,560
	27	28	29	30	31		
DAM NYCA	594,087	596,165	617,074	581,851	545,879		
DAM NON-NYCA	22,356	31,476	31,435	29,699	12,998		
DAM WHEELS	10,663	10,516	8,256	10,505	11,979		
DAM VIRTUAL	40,956	60,276	53,803	56,395	19,970		
BALANCING NYCA	(54,807)	(1,770)	(7,500)	(26,911)	(75,944)		
BALANCING NON-NYCA	(1,471)	745	1,841	2,852	2,726		
BALANCING WHEELS	(3,463)	(3,616)	(1,056)	(3,305)	(4,779)		
BALANCING VIRTUAL	(40,956)	(60,276)	(53,803)	(56,395)	(19,970)		
UFE/LOSSES	79,054	66,988	67,992	66,943	75,396		

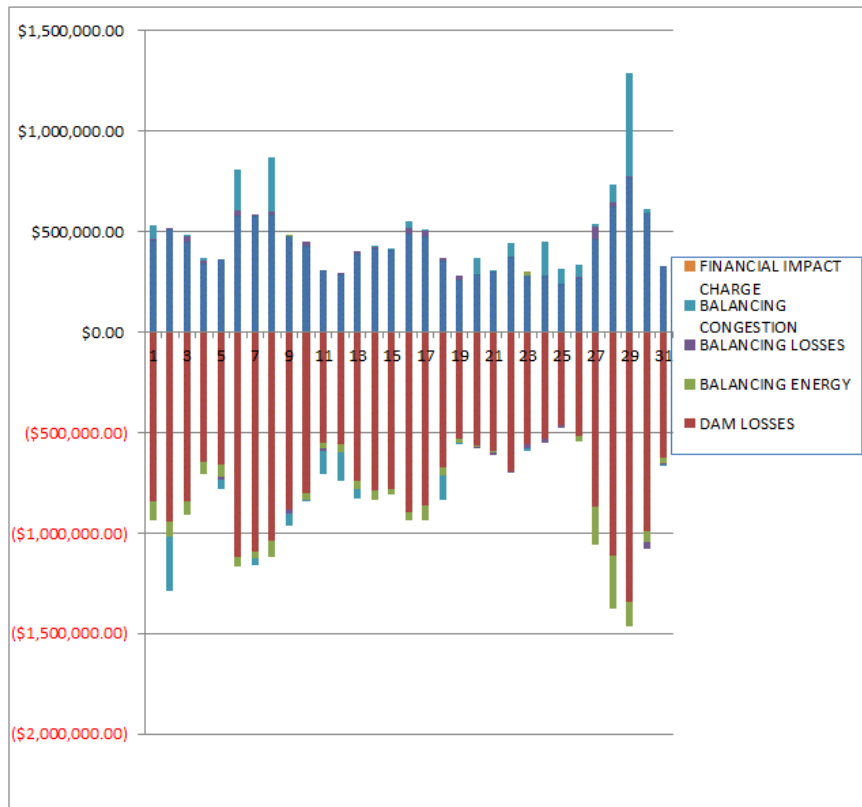




SETTLEMENTS REPORT  
 August 2018 Close-Out Settlement  
 May 7, 2019

4-Month Settlement Adjustment – Market Residuals Analysis

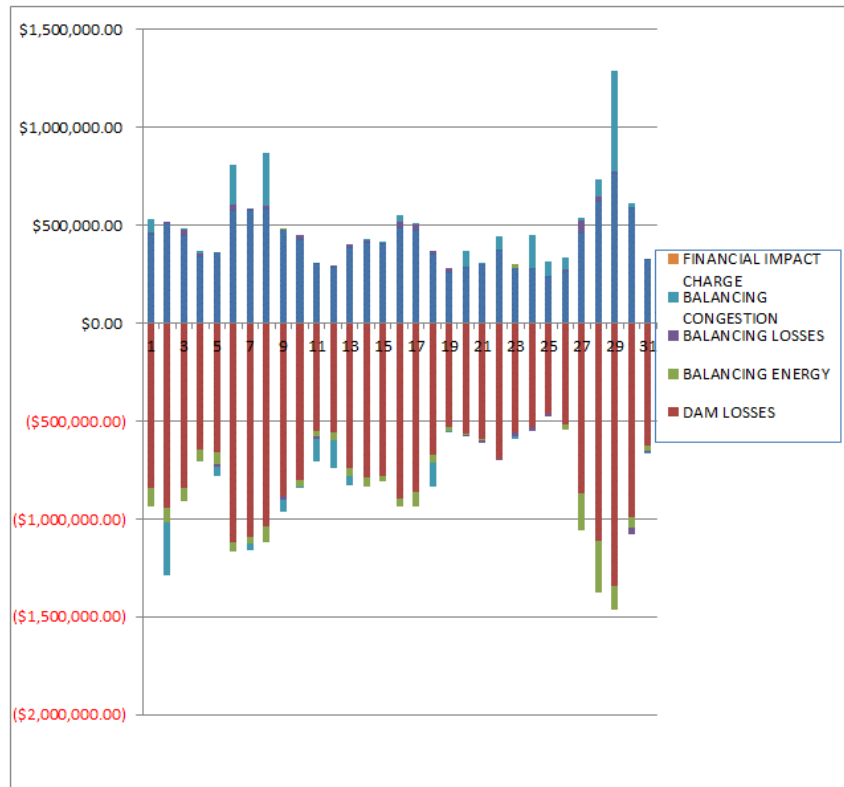
	MONDAY	TUESDAY	WEDNESDAY	THURSDAY	FRIDAY	SATURDAY	SUNDAY
			1	2	3	4	5
DAM ENERGY			\$455,113.95	\$510,494.18	\$446,704.72	\$339,764.16	\$360,099.37
DAM LOSSES			(\$842,778.43)	(\$945,505.78)	(\$840,119.48)	(\$646,392.74)	(\$660,098.55)
BALANCING ENERGY			(\$96,810.59)	(\$73,588.84)	(\$67,497.19)	(\$60,622.48)	(\$58,580.52)
BALANCING LOSSES			\$10,619.60	\$6,153.68	\$28,076.32	\$17,669.52	(\$15,875.30)
BALANCING CONGESTION			\$61,221.10	(\$268,684.72)	\$6,447.40	\$13,409.14	(\$43,450.22)
FINANCIAL IMPACT CHARGE			\$0.00	\$0.00	\$0.00	\$0.00	\$0.00
	6	7	8	9	10	11	12
DAM ENERGY	\$578,632.85	\$574,826.61	\$581,898.57	\$475,436.90	\$430,932.24	\$304,859.81	\$284,973.73
DAM LOSSES	(\$1,119,550.29)	(\$1,093,897.14)	(\$1,039,957.09)	(\$883,960.98)	(\$801,470.41)	(\$554,053.03)	(\$558,173.90)
BALANCING ENERGY	(\$44,820.93)	(\$32,795.03)	(\$79,778.72)	\$1,475.69	(\$32,614.50)	(\$21,725.78)	(\$40,768.96)
BALANCING LOSSES	\$28,646.61	\$7,330.46	\$15,311.15	(\$21,335.10)	\$16,021.44	(\$12,953.34)	\$3,183.89
BALANCING CONGESTION	\$202,039.34	(\$31,143.82)	\$273,376.25	(\$59,501.14)	(\$3,130.11)	(\$115,939.88)	(\$138,912.75)
FINANCIAL IMPACT CHARGE	\$0.00	\$0.00	\$0.00	\$0.00	\$0.00	\$0.00	\$0.00
	13	14	15	16	17	18	19
DAM ENERGY	\$386,686.79	\$412,081.26	\$408,965.31	\$489,907.39	\$475,762.78	\$353,275.93	\$259,873.31
DAM LOSSES	(\$740,026.27)	(\$787,694.21)	(\$784,248.59)	(\$896,948.84)	(\$860,060.52)	(\$673,654.58)	(\$528,103.90)
BALANCING ENERGY	(\$41,277.09)	(\$49,813.51)	(\$23,929.65)	(\$41,466.83)	(\$79,083.95)	(\$37,583.33)	(\$25,117.28)
BALANCING LOSSES	\$13,029.31	\$12,905.38	\$2,447.00	\$26,963.65	\$24,705.61	\$14,173.84	\$19,882.15
BALANCING CONGESTION	(\$45,073.60)	\$6,494.44	\$5,272.48	\$32,544.26	\$7,362.05	(\$122,640.35)	(\$1,287.61)
FINANCIAL IMPACT CHARGE	\$0.00	\$0.00	\$0.00	\$0.00	\$0.00	\$0.00	\$0.00
	20	21	22	23	24	25	26
DAM ENERGY	\$287,497.97	\$303,264.52	\$373,327.68	\$279,854.73	\$281,879.16	\$236,297.63	\$263,910.28
DAM LOSSES	(\$562,421.90)	(\$595,221.72)	(\$694,754.67)	(\$557,779.20)	(\$528,212.39)	(\$460,526.61)	(\$520,928.96)
BALANCING ENERGY	(\$10,435.23)	(\$4,585.81)	\$168.53	\$20,438.57	(\$877.44)	(\$4,856.19)	(\$23,198.95)
BALANCING LOSSES	(\$1,822.64)	(\$10,438.44)	(\$2,945.96)	(\$18,627.58)	(\$21,672.46)	(\$13,366.14)	\$9,647.81
BALANCING CONGESTION	\$78,980.49	\$5,931.52	\$67,995.51	(\$17,893.08)	\$167,853.11	\$80,859.15	\$58,464.15
FINANCIAL IMPACT CHARGE	\$0.00	\$0.00	\$0.00	\$0.00	\$0.00	\$0.00	\$0.00
	27	28	29	30	31		
DAM ENERGY	\$464,115.46	\$624,914.85	\$769,329.57	\$590,371.45	\$328,086.06		
DAM LOSSES	(\$869,063.73)	(\$1,113,230.49)	(\$1,345,807.03)	(\$963,985.10)	(\$625,034.54)		
BALANCING ENERGY	(\$191,836.04)	(\$262,640.52)	(\$115,254.32)	(\$50,280.72)	(\$24,605.42)		
BALANCING LOSSES	\$60,475.36	\$22,091.55	\$2,198.60	(\$31,790.99)	(\$8,224.64)		
BALANCING CONGESTION	\$14,573.89	\$87,810.95	\$513,408.67	\$18,950.64	(\$4,237.12)		
FINANCIAL IMPACT CHARGE	\$0.00	\$0.00	\$0.00	\$0.00	\$0.00		



SETTLEMENTS REPORT  
 August 2018 Close-Out Settlement  
 May 7, 2019

Close-Out Settlement – Market Residuals Analysis

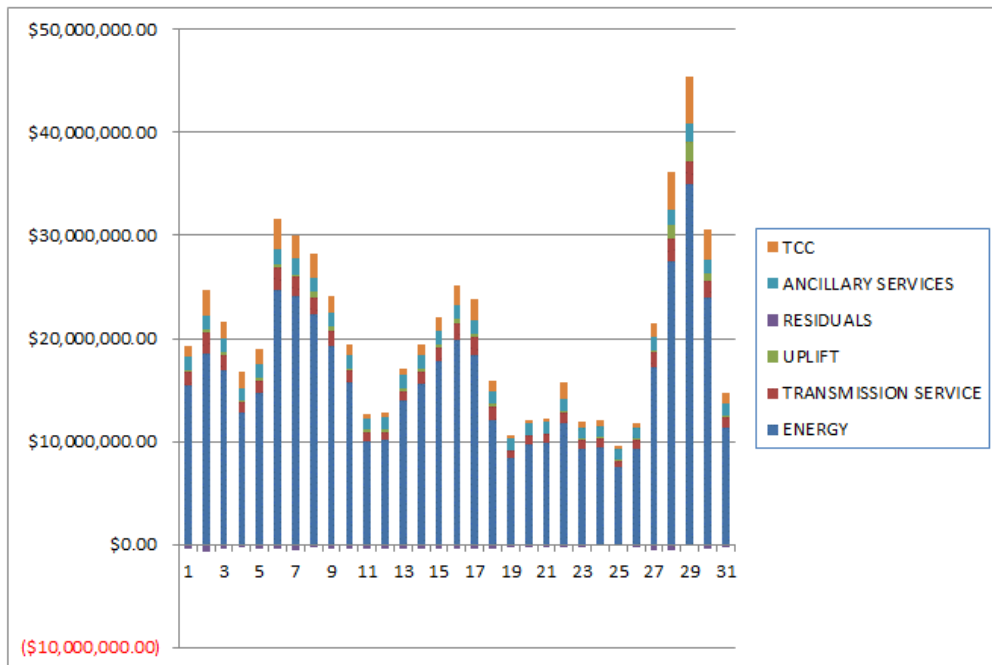
	MONDAY	TUESDAY	WEDNESDAY	THURSDAY	FRIDAY	SATURDAY	SUNDAY
			1	2	3	4	5
DAM ENERGY			\$455,113.95	\$510,494.18	\$446,704.71	\$339,764.16	\$360,099.37
DAM LOSSES			(\$842,778.42)	(\$945,505.78)	(\$840,119.48)	(\$646,392.74)	(\$660,098.54)
BALANCING ENERGY			(\$96,810.59)	(\$73,588.85)	(\$67,497.19)	(\$60,622.49)	(\$58,580.52)
BALANCING LOSSES			\$10,619.60	\$6,153.68	\$28,076.32	\$17,669.52	(\$15,875.30)
BALANCING CONGESTION			\$61,221.10	(\$268,684.72)	\$6,447.40	\$13,409.14	(\$43,450.22)
FINANCIAL IMPACT CHARGE			\$0.00	\$0.00	\$0.00	\$0.00	\$0.00
	6	7	8	9	10	11	12
DAM ENERGY	\$578,632.86	\$574,826.60	\$581,898.57	\$475,436.90	\$430,932.24	\$304,859.81	\$284,973.73
DAM LOSSES	(\$1,119,550.29)	(\$1,093,897.13)	(\$1,039,957.09)	(\$883,960.98)	(\$801,470.41)	(\$554,053.03)	(\$558,173.90)
BALANCING ENERGY	(\$44,820.92)	(\$32,795.03)	(\$79,778.71)	\$1,475.69	(\$32,614.50)	(\$21,725.78)	(\$40,768.87)
BALANCING LOSSES	\$28,646.61	\$7,330.46	\$15,311.15	(\$21,335.10)	\$16,021.44	(\$12,953.34)	\$3,183.88
BALANCING CONGESTION	\$202,039.34	(\$31,143.81)	\$273,376.25	(\$59,501.14)	(\$3,130.11)	(\$115,939.88)	(\$138,912.75)
FINANCIAL IMPACT CHARGE	\$0.00	\$0.00	\$0.00	\$0.00	\$0.00	\$0.00	\$0.00
	13	14	15	16	17	18	19
DAM ENERGY	\$386,686.80	\$412,081.26	\$408,965.32	\$489,907.39	\$475,762.78	\$353,275.93	\$259,873.31
DAM LOSSES	(\$740,026.27)	(\$787,694.20)	(\$784,248.59)	(\$896,948.85)	(\$860,060.53)	(\$673,654.58)	(\$528,103.91)
BALANCING ENERGY	(\$41,277.08)	(\$49,813.52)	(\$23,929.65)	(\$41,466.84)	(\$79,083.95)	(\$37,583.33)	(\$25,117.28)
BALANCING LOSSES	\$13,029.31	\$12,905.37	\$2,447.00	\$26,963.65	\$24,705.62	\$14,173.84	\$19,882.14
BALANCING CONGESTION	(\$45,073.60)	\$6,494.44	\$5,272.48	\$32,544.26	\$7,362.04	(\$122,640.35)	(\$1,287.61)
FINANCIAL IMPACT CHARGE	\$0.00	\$0.00	\$0.00	\$0.00	\$0.00	\$0.00	\$0.00
	20	21	22	23	24	25	26
DAM ENERGY	\$287,497.97	\$303,264.52	\$373,327.68	\$279,854.73	\$281,879.17	\$236,297.63	\$263,910.27
DAM LOSSES	(\$562,421.90)	(\$595,221.72)	(\$694,754.87)	(\$557,779.20)	(\$528,212.39)	(\$460,526.60)	(\$520,928.86)
BALANCING ENERGY	(\$10,435.23)	(\$4,585.81)	\$168.54	\$20,438.57	(\$877.44)	(\$4,856.19)	(\$23,198.95)
BALANCING LOSSES	(\$1,622.64)	(\$10,438.44)	(\$2,945.96)	(\$18,627.58)	(\$21,672.47)	(\$13,366.14)	\$9,647.81
BALANCING CONGESTION	\$78,980.49	\$5,931.52	\$67,965.51	(\$17,893.08)	\$167,853.11	\$80,859.14	\$58,464.15
FINANCIAL IMPACT CHARGE	\$0.00	\$0.00	\$0.00	\$0.00	\$0.00	\$0.00	\$0.00
	27	28	29	30	31		
DAM ENERGY	\$464,115.45	\$624,914.84	\$769,329.58	\$590,371.46	\$328,086.06		
DAM LOSSES	(\$869,063.73)	(\$1,113,230.49)	(\$1,345,807.04)	(\$993,965.09)	(\$625,034.54)		
BALANCING ENERGY	(\$191,836.04)	(\$262,640.53)	(\$115,254.31)	(\$50,280.72)	(\$24,605.42)		
BALANCING LOSSES	\$60,475.36	\$22,091.55	\$2,198.59	(\$31,790.99)	(\$8,224.64)		
BALANCING CONGESTION	\$14,573.89	\$87,810.94	\$513,408.67	\$18,950.63	(\$4,237.12)		
FINANCIAL IMPACT CHARGE	\$0.00	\$0.00	\$0.00	\$0.00	\$0.00		



SETTLEMENTS REPORT  
August 2018 Close-Out Settlement  
May 7, 2019

4-Month Settlement Adjustment – Market Costs Analysis

	MONDAY	TUESDAY	WEDNESDAY	THURSDAY	FRIDAY	SATURDAY	SUNDAY
			1	2	3	4	5
ENERGY			\$15,473,276.11	\$18,579,321.46	\$16,944,737.33	\$12,760,388.84	\$14,753,903.72
TRANSMISSION SERVICE			\$1,291,290.64	\$2,078,899.76	\$1,423,315.56	\$1,073,893.12	\$1,196,175.02
UPLIFT			\$178,166.30	\$195,709.02	\$315,624.59	\$171,441.60	\$293,699.95
RESIDUALS			(\$412,634.37)	(\$771,131.48)	(\$426,388.23)	(\$336,172.40)	(\$417,905.22)
ANCILLARY SERVICES			\$1,293,349.11	\$1,315,926.63	\$1,278,308.01	\$1,168,902.71	\$1,234,256.54
TCC			\$1,030,552.34	\$2,514,047.16	\$1,651,043.73	\$1,617,245.17	\$1,509,733.47
	6	7	8	9	10	11	12
ENERGY	\$24,772,459.96	\$24,125,062.07	\$22,278,358.93	\$19,200,397.31	\$15,668,869.53	\$10,077,648.92	\$10,090,301.67
TRANSMISSION SERVICE	\$2,154,524.89	\$1,852,400.54	\$1,737,420.77	\$1,524,658.25	\$1,223,455.92	\$775,997.61	\$789,166.74
UPLIFT	\$299,886.28	\$264,146.08	\$479,347.67	\$401,952.07	\$191,991.77	\$273,543.60	\$334,392.82
RESIDUALS	(\$355,052.42)	(\$575,678.92)	(\$249,149.84)	(\$487,884.63)	(\$390,261.34)	(\$399,812.22)	(\$449,697.89)
ANCILLARY SERVICES	\$1,474,328.57	\$1,564,603.63	\$1,330,766.06	\$1,305,780.74	\$1,264,494.35	\$1,119,780.48	\$1,135,009.23
TCC	\$2,881,650.24	\$2,179,914.38	\$2,358,393.93	\$1,699,324.86	\$1,054,857.75	\$346,416.19	\$418,380.04
	13	14	15	16	17	18	19
ENERGY	\$13,948,984.41	\$15,616,518.30	\$17,744,915.11	\$19,806,867.92	\$18,432,367.44	\$12,089,431.28	\$8,336,434.02
TRANSMISSION SERVICE	\$976,897.33	\$1,189,832.24	\$1,351,712.34	\$1,638,913.15	\$1,650,460.32	\$1,231,925.78	\$746,866.19
UPLIFT	\$280,026.18	\$302,042.82	\$306,267.16	\$395,030.44	\$346,366.28	\$293,071.29	\$99,816.61
RESIDUALS	(\$426,660.86)	(\$406,026.64)	(\$391,493.45)	(\$389,000.37)	(\$431,314.03)	(\$466,428.49)	(\$274,753.33)
ANCILLARY SERVICES	\$1,239,590.84	\$1,216,213.13	\$1,259,872.44	\$1,341,835.80	\$1,289,639.64	\$1,175,447.48	\$1,049,390.14
TCC	\$644,973.52	\$1,140,740.29	\$1,451,419.16	\$1,981,073.54	\$2,090,296.91	\$1,140,512.22	\$361,263.40
	20	21	22	23	24	25	26
ENERGY	\$9,726,106.33	\$9,882,709.73	\$11,708,401.20	\$9,230,343.77	\$9,418,891.03	\$7,441,271.63	\$9,266,887.13
TRANSMISSION SERVICE	\$807,547.41	\$800,942.53	\$1,114,668.17	\$894,960.23	\$831,544.31	\$670,906.12	\$820,068.05
UPLIFT	\$100,452.40	\$93,070.98	\$132,646.56	\$117,210.54	\$176,047.19	\$166,758.12	\$156,559.85
RESIDUALS	(\$208,001.31)	(\$301,049.93)	(\$256,209.11)	(\$294,006.56)	(\$101,030.02)	(\$161,592.16)	(\$212,105.57)
ANCILLARY SERVICES	\$1,089,167.74	\$1,090,918.12	\$1,173,768.57	\$1,092,576.36	\$1,097,925.48	\$1,045,056.30	\$1,100,584.43
TCC	\$408,863.43	\$415,278.25	\$1,591,507.85	\$551,382.35	\$553,652.50	\$236,120.12	\$454,457.62
	27	28	29	30	31		
ENERGY	\$17,222,155.26	\$27,477,064.35	\$35,038,387.24	\$23,905,844.18	\$11,325,172.15		
TRANSMISSION SERVICE	\$1,404,352.89	\$2,208,399.40	\$2,101,078.74	\$1,675,932.82	\$1,043,051.55		
UPLIFT	\$251,306.77	\$1,358,795.15	\$1,947,911.49	\$672,829.67	\$78,171.14		
RESIDUALS	(\$521,735.06)	(\$641,053.66)	(\$176,124.51)	(\$466,734.72)	(\$334,015.66)		
ANCILLARY SERVICES	\$1,324,033.19	\$1,436,843.79	\$1,767,947.73	\$1,353,234.16	\$1,190,330.77		
TCC	\$1,318,135.40	\$3,696,679.93	\$4,567,335.13	\$3,014,761.76	\$1,018,652.30		



SETTLEMENTS REPORT  
August 2018 Close-Out Settlement  
May 7, 2019

Close-Out Settlement – Market Costs Analysis

	MONDAY	TUESDAY	WEDNESDAY	THURSDAY	FRIDAY	SATURDAY	SUNDAY
			1	2	3	4	5
ENERGY			\$15,473,275.88	\$18,579,321.69	\$16,944,737.38	\$12,760,389.02	\$14,753,904.10
TRANSMISSION SERVICE			\$1,291,289.56	\$2,078,900.45	\$1,423,315.20	\$1,073,893.02	\$1,196,176.96
UPLIFT			\$178,166.30	\$195,709.02	\$315,624.59	\$171,441.55	\$293,659.93
RESIDUALS			(\$412,634.36)	(\$771,131.49)	(\$426,388.24)	(\$336,172.41)	(\$417,905.21)
ANCILLARY SERVICES			\$1,293,347.50	\$1,315,927.67	\$1,278,307.47	\$1,168,902.57	\$1,234,259.46
TCC			\$1,030,552.34	\$2,514,047.16	\$1,651,043.73	\$1,617,245.17	\$1,509,733.47
	6	7	8	9	10	11	12
ENERGY	\$24,772,459.77	\$24,125,062.07	\$22,278,358.83	\$19,200,397.02	\$15,668,869.50	\$10,077,648.90	\$10,090,301.77
TRANSMISSION SERVICE	\$2,154,527.38	\$1,852,402.67	\$1,737,422.34	\$1,524,656.82	\$1,223,455.62	\$775,996.15	\$789,163.81
UPLIFT	\$299,886.28	\$264,146.08	\$479,347.66	\$401,952.07	\$191,991.82	\$273,543.60	\$334,392.84
RESIDUALS	(\$355,052.40)	(\$575,678.91)	(\$249,149.83)	(\$487,884.63)	(\$390,261.34)	(\$399,812.22)	(\$449,697.91)
ANCILLARY SERVICES	\$1,474,332.30	\$1,564,606.81	\$1,330,770.39	\$1,305,778.59	\$1,264,493.91	\$1,119,778.28	\$1,135,004.83
TCC	\$2,881,650.24	\$2,179,914.38	\$2,358,393.93	\$1,699,324.86	\$1,054,857.75	\$346,416.19	\$418,380.04
	13	14	15	16	17	18	19
ENERGY	\$13,948,984.72	\$15,616,518.26	\$17,744,915.20	\$19,806,867.97	\$18,432,367.70	\$12,089,431.16	\$8,336,433.88
TRANSMISSION SERVICE	\$976,896.39	\$1,189,830.95	\$1,351,712.14	\$1,638,914.10	\$1,650,461.15	\$1,231,925.79	\$746,865.08
UPLIFT	\$280,026.17	\$302,042.81	\$306,267.16	\$395,030.43	\$346,366.28	\$293,071.29	\$99,816.61
RESIDUALS	(\$426,660.84)	(\$406,026.65)	(\$391,493.44)	(\$389,000.39)	(\$431,314.04)	(\$466,428.49)	(\$274,753.35)
ANCILLARY SERVICES	\$1,239,589.42	\$1,216,211.21	\$1,259,872.14	\$1,341,837.23	\$1,289,640.88	\$1,175,447.48	\$1,049,388.48
TCC	\$644,973.52	\$1,140,740.29	\$1,451,419.16	\$1,991,073.54	\$2,090,296.91	\$1,140,512.22	\$361,263.40
	20	21	22	23	24	25	26
ENERGY	\$9,726,106.44	\$9,882,709.50	\$11,708,400.94	\$9,230,343.62	\$9,418,890.79	\$7,441,271.39	\$9,266,887.01
TRANSMISSION SERVICE	\$807,547.38	\$800,943.17	\$1,114,667.21	\$894,960.31	\$831,541.60	\$670,904.05	\$820,064.83
UPLIFT	\$100,452.39	\$93,070.98	\$140,729.01	\$125,270.30	\$176,047.16	\$166,758.11	\$156,559.85
RESIDUALS	(\$208,001.31)	(\$301,049.93)	(\$256,209.10)	(\$294,006.56)	(\$101,030.02)	(\$161,592.16)	(\$212,105.58)
ANCILLARY SERVICES	\$1,089,167.69	\$1,090,919.10	\$1,173,767.13	\$1,092,576.47	\$1,097,921.43	\$1,045,053.20	\$1,100,579.61
TCC	\$408,863.43	\$415,278.25	\$1,591,507.85	\$551,382.35	\$553,652.50	\$236,120.12	\$454,457.62
	27	28	29	30	31		
ENERGY	\$17,222,154.85	\$27,477,064.52	\$35,038,387.24	\$23,905,843.95	\$11,325,172.02		
TRANSMISSION SERVICE	\$1,404,352.97	\$2,208,403.40	\$2,101,084.19	\$1,675,935.78	\$1,043,050.47		
UPLIFT	\$251,306.78	\$1,358,795.15	\$1,947,911.48	\$672,829.62	\$78,171.14		
RESIDUALS	(\$521,735.07)	(\$641,053.69)	(\$176,124.51)	(\$466,734.71)	(\$334,015.66)		
ANCILLARY SERVICES	\$1,324,033.30	\$1,436,849.80	\$1,767,955.92	\$1,353,238.59	\$1,190,329.15		
TCC	\$1,318,135.40	\$3,696,679.93	\$4,567,335.13	\$3,014,761.76	\$1,018,652.30		

