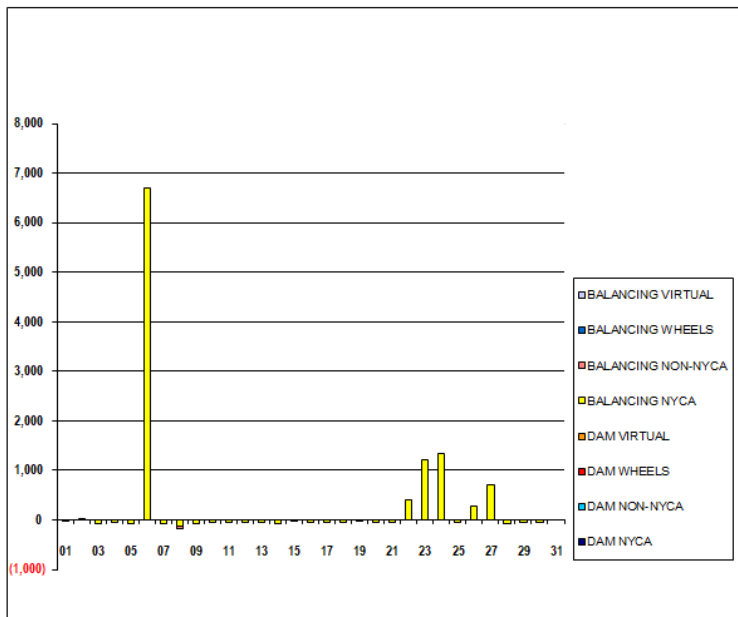


SETTLEMENTS REPORT  
November 2018 Settlement Adjustment  
April 5, 2019

Settlement Adjustment – Market Supply Delta Analysis

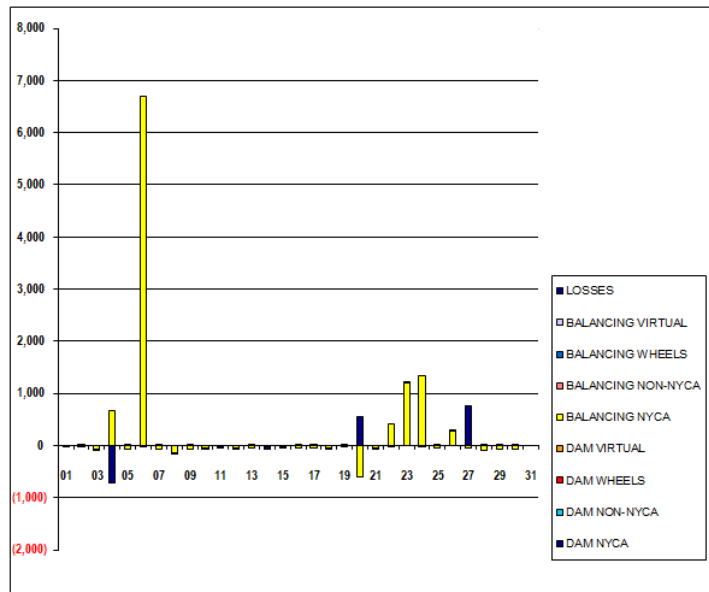
	MONDAY	TUESDAY	WEDNESDAY	THURSDAY	FRIDAY	SATURDAY	SUNDAY
				1	2	3	4
DAM NYCA				0	0	0	0
DAM NON-NYCA				0	0	0	0
DAM WHEELS				0	0	0	0
DAM VIRTUAL				0	0	0	0
BALANCING NYCA				(15)	17	(56)	(51)
BALANCING NON-NYCA				0	0	0	0
BALANCING WHEELS				0	0	0	0
BALANCING VIRTUAL				0	0	0	0
	5	6	7	8	9	10	11
DAM NYCA	0	0	0	0	0	0	0
DAM NON-NYCA	0	0	0	0	0	0	0
DAM WHEELS	0	0	0	0	0	0	0
DAM VIRTUAL	0	0	0	0	0	0	0
BALANCING NYCA	(67)	6,698	(70)	(132)	(66)	(61)	(49)
BALANCING NON-NYCA	0	0	0	(38)	0	0	0
BALANCING WHEELS	0	0	0	0	0	0	0
BALANCING VIRTUAL	0	0	0	0	0	0	0
	12	13	14	15	16	17	18
DAM NYCA	0	0	0	0	0	0	0
DAM NON-NYCA	0	0	0	0	0	0	0
DAM WHEELS	0	0	0	0	0	0	0
DAM VIRTUAL	0	0	0	0	0	0	0
BALANCING NYCA	(58)	(55)	(76)	(39)	(48)	(47)	(53)
BALANCING NON-NYCA	0	0	0	0	0	0	0
BALANCING WHEELS	0	0	0	0	0	0	0
BALANCING VIRTUAL	0	0	0	0	0	0	0
	19	20	21	22	23	24	25
DAM NYCA	0	0	0	0	0	0	0
DAM NON-NYCA	0	0	0	0	0	0	0
DAM WHEELS	0	0	0	0	0	0	0
DAM VIRTUAL	0	0	0	0	0	0	0
BALANCING NYCA	(33)	(40)	(55)	402	1,204	1,335	(51)
BALANCING NON-NYCA	0	0	0	0	0	0	0
BALANCING WHEELS	0	0	0	0	0	0	0
BALANCING VIRTUAL	0	0	0	0	0	0	0
	26	27	28	29	30	31	
DAM NYCA	0	0	0	0	0	0	
DAM NON-NYCA	0	0	0	0	0	0	
DAM WHEELS	0	0	0	0	0	0	
DAM VIRTUAL	0	0	0	0	0	0	
BALANCING NYCA	265	699	(85)	(59)	(62)	0	
BALANCING NON-NYCA	0	0	0	0	0	0	
BALANCING WHEELS	0	0	0	0	0	0	
BALANCING VIRTUAL	0	0	0	0	0	0	



SETTLEMENTS REPORT  
November 2018 Settlement Adjustment  
April 5, 2019

Settlement Adjustment – Market Withdrawals Delta Analysis

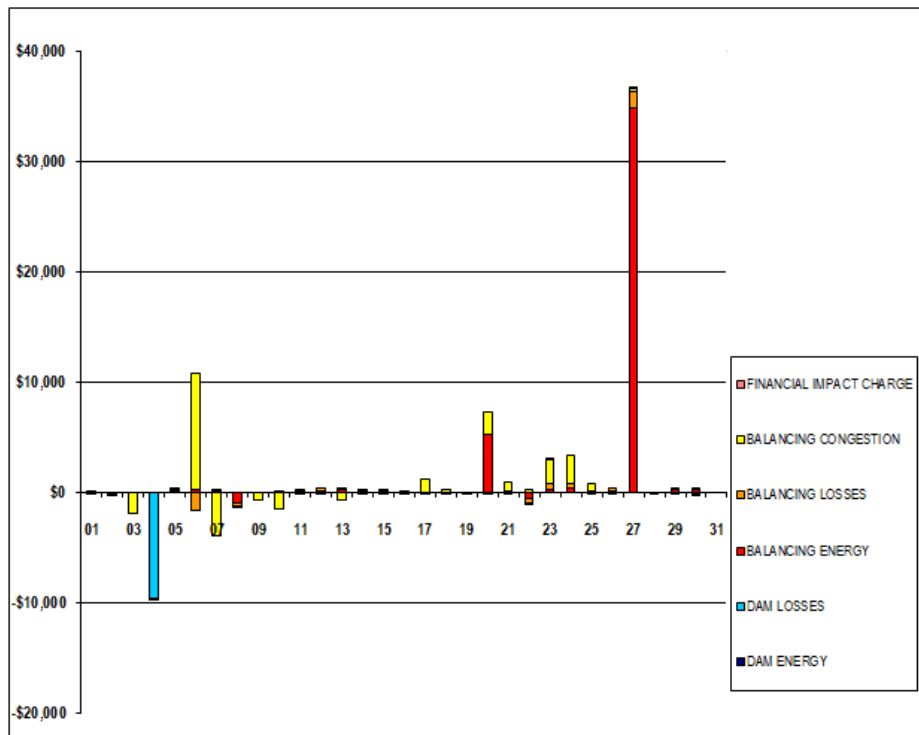
	MONDAY	TUESDAY	WEDNESDAY	THURSDAY	FRIDAY	SATURDAY	SUNDAY
				1	2	3	4
DAM NYCA				0	0	0	0
DAM NON-NYCA				0	0	0	0
DAM WHEELS				0	0	0	0
DAM VIRTUAL				0	0	0	0
BALANCING NYCA				(15)	17	(66)	659
BALANCING NON-NYCA				0	0	0	0
BALANCING WHEELS				0	0	0	0
BALANCING VIRTUAL				0	0	0	0
UFE/LOSSES				0	(0)	(0)	(710)
	5	6	7	8	9	10	11
DAM NYCA	0	0	0	0	0	0	0
DAM NON-NYCA	0	0	0	0	0	0	0
DAM WHEELS	0	0	0	0	0	0	0
DAM VIRTUAL	0	0	0	0	0	0	0
BALANCING NYCA	(68)	6,699	(72)	(132)	(67)	(56)	(33)
BALANCING NON-NYCA	0	0	0	0	0	0	0
BALANCING WHEELS	0	0	0	0	0	0	0
BALANCING VIRTUAL	0	0	0	0	0	0	0
UFE/LOSSES	1	(1)	2	(38)	1	(5)	(15)
	12	13	14	15	16	17	18
DAM NYCA	0	0	0	0	0	0	0
DAM NON-NYCA	0	0	0	0	0	0	0
DAM WHEELS	0	0	0	0	0	0	0
DAM VIRTUAL	0	0	0	0	0	0	0
BALANCING NYCA	(55)	(59)	(37)	(20)	(49)	(47)	(52)
BALANCING NON-NYCA	0	0	0	0	0	0	0
BALANCING WHEELS	0	0	0	0	0	0	0
BALANCING VIRTUAL	0	0	0	0	0	0	0
UFE/LOSSES	(3)	4	(40)	(20)	1	0	(1)
	19	20	21	22	23	24	25
DAM NYCA	0	0	0	0	0	0	0
DAM NON-NYCA	0	0	0	0	0	0	0
DAM WHEELS	0	0	0	0	0	0	0
DAM VIRTUAL	0	0	0	0	0	0	0
BALANCING NYCA	(33)	(501)	(50)	415	1,196	1,345	(53)
BALANCING NON-NYCA	0	0	0	0	0	0	0
BALANCING WHEELS	0	0	0	0	0	0	0
BALANCING VIRTUAL	0	0	0	0	0	0	0
UFE/LOSSES	0	561	(5)	(13)	8	(10)	1
	26	27	28	29	30	31	
DAM NYCA	0	0	0	0	0	0	
DAM NON-NYCA	0	0	0	0	0	0	
DAM WHEELS	0	0	0	0	0	0	
DAM VIRTUAL	0	0	0	0	0	0	
BALANCING NYCA	264	(54)	(65)	(64)	(67)	0	
BALANCING NON-NYCA	0	0	0	0	0	0	
BALANCING WHEELS	0	0	0	0	0	0	
BALANCING VIRTUAL	0	0	0	0	0	0	
UFE/LOSSES	1	753	0	5	5	0	



SETTLEMENTS REPORT  
November 2018 Settlement Adjustment  
April 5, 2019

Settlement Adjustment – Market Residuals Delta Analysis

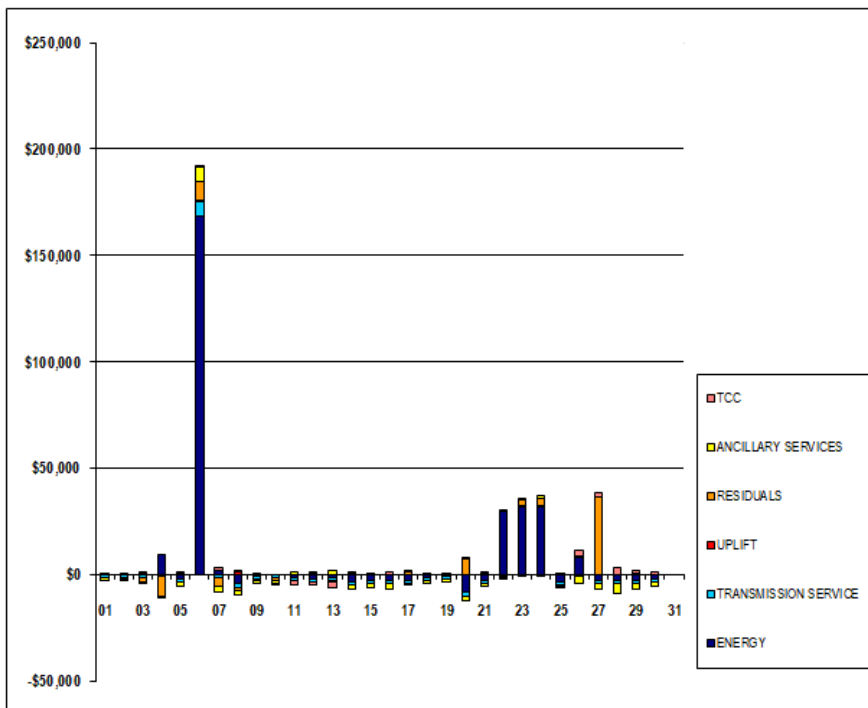
	MONDAY	TUESDAY	WEDNESDAY	THURSDAY	FRIDAY	SATURDAY	SUNDAY
				1	2	3	4
DAM ENERGY				\$0.00	(\$0.01)	\$0.01	\$0.00
DAM LOSSES				\$0.00	\$0.00	\$0.00	(\$9,702.54)
BALANCING ENERGY				(\$16.02)	(\$61.86)	(\$4.51)	\$0.00
BALANCING LOSSES				(\$157.57)	(\$95.75)	(\$53.08)	\$0.01
BALANCING CONGESTION				\$1.55	(\$49.74)	(\$1,922.16)	(\$123.35)
FINANCIAL IMPACT CHARGE				\$0.00	\$0.00	\$0.00	(\$0.01)
	5	6	7	8	9	10	11
DAM ENERGY	\$0.00	\$0.00	(\$0.01)	\$0.00	\$0.00	\$0.01	\$0.01
DAM LOSSES	\$0.00	\$0.00	(\$0.01)	(\$0.01)	\$0.01	\$0.00	\$0.01
BALANCING ENERGY	\$36.58	\$209.73	\$24.33	(\$1,023.18)	(\$0.28)	\$1.74	(\$123.09)
BALANCING LOSSES	\$102.51	(\$1,669.16)	\$8.03	(\$195.39)	(\$31.56)	(\$104.78)	\$99.04
BALANCING CONGESTION	\$0.01	\$10,530.22	(\$3,981.74)	(\$96.13)	(\$769.01)	(\$1,407.68)	\$104.99
FINANCIAL IMPACT CHARGE	\$0.00	\$0.00	\$0.00	\$0.00	\$0.00	\$0.00	\$0.00
	12	13	14	15	16	17	18
DAM ENERGY	\$0.00	\$0.00	\$0.01	\$0.00	\$0.00	\$0.00	(\$0.01)
DAM LOSSES	(\$0.01)	(\$0.01)	(\$0.01)	\$0.00	\$0.00	\$0.01	(\$0.01)
BALANCING ENERGY	\$112.28	\$179.20	\$21.78	(\$217.55)	(\$95.57)	(\$4.47)	(\$44.46)
BALANCING LOSSES	\$188.15	\$96.70	\$50.74	\$119.75	(\$9.85)	(\$84.19)	(\$6.69)
BALANCING CONGESTION	(\$3.68)	(\$767.01)	\$138.28	\$18.85	\$89.17	\$1,143.67	\$145.93
FINANCIAL IMPACT CHARGE	\$0.00	\$0.00	\$0.00	\$0.00	\$0.00	\$0.00	\$0.00
	19	20	21	22	23	24	25
DAM ENERGY	\$0.00	\$0.00	(\$0.01)	(\$0.01)	\$0.00	\$0.00	\$0.00
DAM LOSSES	(\$0.01)	\$0.00	\$0.00	\$0.00	\$0.00	\$0.00	\$0.00
BALANCING ENERGY	(\$11.97)	\$5,205.44	\$20.58	(\$638.70)	\$195.59	\$358.27	\$67.68
BALANCING LOSSES	(\$6.12)	(\$93.32)	(\$82.96)	(\$355.72)	\$584.95	\$396.62	(\$72.75)
BALANCING CONGESTION	(\$166.81)	\$1,963.52	\$815.16	\$153.02	\$2,142.68	\$2,556.23	\$621.94
FINANCIAL IMPACT CHARGE	\$0.00	\$0.00	\$0.00	(\$0.03)	\$0.03	\$0.00	\$0.00
	26	27	28	29	30	31	
DAM ENERGY	\$0.00	\$0.00	\$0.00	\$0.00	\$0.00	\$0.00	
DAM LOSSES	\$0.00	\$0.00	\$0.00	\$0.00	\$0.00	\$0.00	
BALANCING ENERGY	\$36.09	\$34,833.92	(\$41.74)	\$215.40	\$207.15	\$0.00	
BALANCING LOSSES	\$264.13	\$1,479.03	(\$14.30)	(\$83.92)	(\$226.87)	\$0.00	
BALANCING CONGESTION	(\$5.84)	\$227.72	(\$150.60)	\$12.40	\$6.48	\$0.00	
FINANCIAL IMPACT CHARGE	\$0.00	\$0.02	\$0.00	(\$0.11)	(\$0.01)	\$0.00	



SETTLEMENTS REPORT  
November 2018 Settlement Adjustment  
April 5, 2019

Settlement Adjustment – Market Costs Delta Analysis

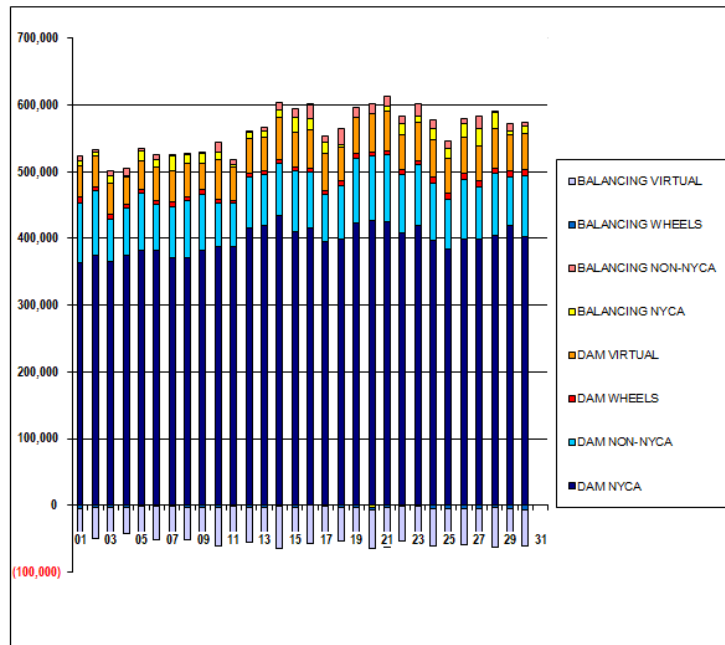
	MONDAY	TUESDAY	WEDNESDAY	THURSDAY	FRIDAY	SATURDAY	SUNDAY
ENERGY				1	2	3	4
TRANSMISSION SERVICE				(\$227.36)	(\$398.46)	\$399.63	\$8,943.94
UPLIFT				(\$1,358.91)	(\$1,338.27)	(\$1,370.13)	(\$604.95)
RESIDUALS				(\$0.02)	(\$0.05)	\$0.00	\$0.00
ANCILLARY SERVICES				(\$172.04)	(\$207.36)	(\$1,979.74)	(\$9,916.74)
TCC				(\$1,254.77)	(\$1,212.26)	(\$1,272.56)	(\$490.00)
				\$49.20	\$33.66	\$14.58	\$0.00
	5	6	7	8	9	10	11
ENERGY	(\$2,207.19)	\$168,347.48	\$2,075.58	(\$4,411.61)	(\$1,001.73)	(\$225.23)	(\$1,315.79)
TRANSMISSION SERVICE	(\$1,639.16)	\$6,979.30	(\$1,696.09)	(\$1,964.09)	(\$1,356.99)	(\$1,491.19)	(\$1,352.63)
UPLIFT	\$0.04	\$290.09	\$0.01	\$931.79	(\$0.01)	\$0.02	\$0.00
RESIDUALS	\$139.10	\$9,070.79	(\$3,949.40)	(\$1,314.71)	(\$800.84)	(\$1,510.71)	\$80.96
ANCILLARY SERVICES	(\$1,864.94)	\$6,810.57	(\$2,524.60)	(\$1,964.37)	(\$1,465.96)	(\$1,172.82)	\$1,078.56
TCC	\$396.75	\$922.38	\$1,005.12	\$180.90	\$247.53	(\$159.30)	(\$2,281.89)
	12	13	14	15	16	17	18
ENERGY	(\$2,418.81)	(\$1,476.88)	(\$3,361.92)	(\$2,634.21)	(\$2,838.43)	(\$2,683.54)	(\$1,680.88)
TRANSMISSION SERVICE	(\$1,231.74)	(\$1,407.84)	(\$1,463.98)	(\$1,432.23)	(\$1,397.93)	(\$1,290.71)	(\$1,270.92)
UPLIFT	(\$1.15)	\$0.00	\$0.01	\$0.05	\$0.00	\$0.00	(\$0.01)
RESIDUALS	\$296.74	(\$491.12)	\$210.80	(\$78.95)	(\$16.25)	\$1,055.02	\$94.76
ANCILLARY SERVICES	\$543.11	\$1,843.41	(\$1,968.21)	(\$1,860.90)	(\$2,427.24)	(\$1,275.07)	(\$1,217.83)
TCC	(\$1,646.22)	(\$3,103.65)	\$680.97	\$597.60	\$1,177.74	\$120.90	\$80.19
	19	20	21	22	23	24	25
ENERGY	(\$1,066.14)	(\$8,301.58)	(\$2,799.11)	\$29,479.05	\$31,789.78	\$31,858.04	(\$3,736.59)
TRANSMISSION SERVICE	(\$1,341.70)	(\$2,089.65)	(\$1,361.01)	(\$809.03)	\$186.19	\$516.57	(\$1,257.99)
UPLIFT	(\$0.02)	\$0.00	\$0.00	(\$0.01)	\$0.00	\$0.00	\$5.59
RESIDUALS	(\$184.91)	\$7,075.64	\$752.77	(\$841.44)	\$2,923.25	\$3,311.12	\$616.87
ANCILLARY SERVICES	(\$1,239.44)	(\$1,984.83)	(\$1,488.34)	(\$626.26)	\$711.04	\$1,164.59	(\$924.48)
TCC	\$43.65	\$126.30	\$273.45	\$26.07	(\$215.94)	(\$347.25)	(\$202.11)
	26	27	28	29	30	31	
ENERGY	\$8,062.38	(\$2,691.49)	(\$2,882.99)	(\$3,141.45)	(\$2,530.26)	\$0.00	
TRANSMISSION SERVICE	(\$866.91)	(\$1,552.32)	(\$1,499.01)	(\$1,313.44)	(\$1,351.88)	\$0.00	
UPLIFT	\$0.00	\$0.00	(\$0.01)	(\$7.66)	\$3.10	\$0.00	
RESIDUALS	\$294.38	\$36,540.69	(\$206.64)	\$143.77	(\$13.25)	\$0.00	
ANCILLARY SERVICES	(\$3,407.80)	(\$3,029.69)	(\$4,719.58)	(\$2,694.81)	(\$2,082.14)	\$0.00	
TCC	\$2,714.34	\$1,850.19	\$3,370.62	\$1,516.62	\$869.70	\$0.00	



SETTLEMENTS REPORT  
November 2018 Settlement Adjustment  
April 5, 2019

Initial Settlement – Market Supply Analysis

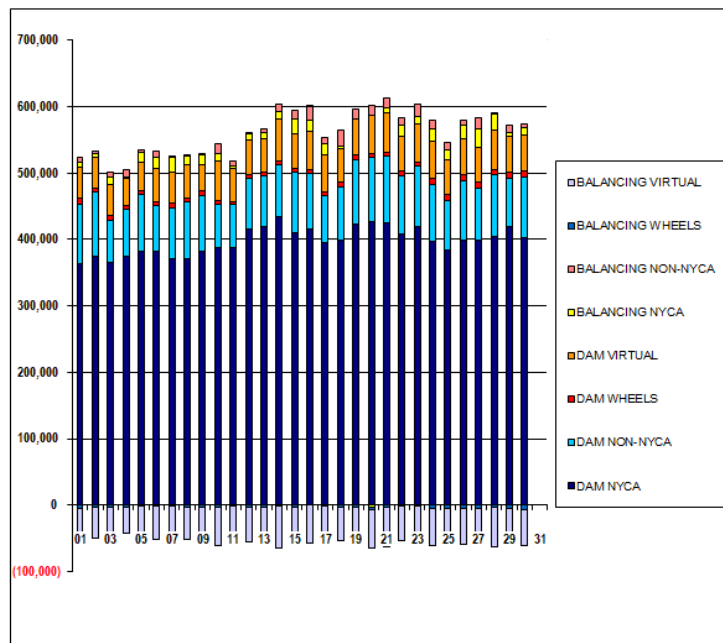
	MONDAY	TUESDAY	WEDNESDAY	THURSDAY	FRIDAY	SATURDAY	SUNDAY
DAM NYCA				1	2	3	4
DAM NON-NYCA				363,026	374,759	366,115	375,018
DAM WHEELS				89,913	96,210	62,684	70,305
DAM VIRTUAL				9,163	6,800	7,346	6,536
BALANCING NYCA				46,691	46,743	46,268	40,229
BALANCING NON-NYCA				7,417	5,282	12,392	1,821
BALANCING WHEELS				8,562	3,422	5,945	10,633
BALANCING VIRTUAL				(5,563)	(3,200)	(3,746)	(2,786)
				(46,691)	(46,743)	(46,268)	(40,229)
	5	6	7	8	9	10	11
DAM NYCA	383,085	383,187	371,179	371,735	381,508	387,882	388,132
DAM NON-NYCA	84,255	68,850	77,216	84,302	85,520	65,498	64,677
DAM WHEELS	5,344	5,053	5,916	6,073	6,061	5,693	4,579
DAM VIRTUAL	44,512	50,632	47,231	49,861	40,161	59,224	50,553
BALANCING NYCA	13,792	10,203	21,573	13,629	13,503	10,299	2,185
BALANCING NON-NYCA	3,440	8,484	144	1,996	410	15,182	8,898
BALANCING WHEELS	(1,744)	(1,453)	(2,316)	(2,473)	(2,460)	(2,531)	(2,167)
BALANCING VIRTUAL	(44,512)	(50,632)	(47,231)	(49,861)	(40,161)	(59,224)	(50,553)
	12	13	14	15	16	17	18
DAM NYCA	416,227	419,717	434,119	409,672	415,281	396,167	398,587
DAM NON-NYCA	75,509	75,758	78,655	91,251	85,267	70,815	80,401
DAM WHEELS	6,340	6,131	5,407	5,517	4,837	5,608	7,710
DAM VIRTUAL	52,514	49,562	63,768	52,035	57,765	54,234	50,154
BALANCING NYCA	8,164	9,792	11,006	23,400	17,463	18,287	4,410
BALANCING NON-NYCA	1,313	5,951	11,501	13,332	19,176	9,032	23,978
BALANCING WHEELS	(2,727)	(2,530)	(1,807)	(2,517)	514	(2,008)	(4,110)
BALANCING VIRTUAL	(52,514)	(49,562)	(63,768)	(52,035)	(57,765)	(54,234)	(50,154)
	19	20	21	22	23	24	25
DAM NYCA	423,992	427,735	425,843	408,629	419,990	398,098	384,905
DAM NON-NYCA	96,140	96,245	99,191	88,151	90,931	85,380	73,941
DAM WHEELS	7,326	5,527	6,922	5,802	6,263	8,778	8,675
DAM VIRTUAL	53,855	58,554	58,667	52,528	57,731	56,007	52,476
BALANCING NYCA	648	(3,341)	7,502	17,233	8,341	16,829	15,102
BALANCING NON-NYCA	14,933	13,212	15,145	10,964	18,638	13,265	10,760
BALANCING WHEELS	(3,642)	(2,975)	(3,602)	(1,953)	(1,374)	(5,122)	(5,075)
BALANCING VIRTUAL	(53,855)	(58,554)	(58,667)	(52,528)	(57,731)	(56,007)	(52,476)
	26	27	28	29	30		
DAM NYCA	399,834	399,488	405,010	419,467	403,387		
DAM NON-NYCA	89,339	77,756	93,293	73,512	90,241		
DAM WHEELS	8,357	8,931	7,816	7,995	9,880		
DAM VIRTUAL	54,076	52,008	57,862	53,837	54,283		
BALANCING NYCA	20,555	27,195	25,006	7,000	10,558		
BALANCING NON-NYCA	7,015	18,071	1,039	11,177	5,995		
BALANCING WHEELS	(4,757)	(5,331)	(4,216)	(4,345)	(6,280)		
BALANCING VIRTUAL	(54,076)	(52,008)	(57,862)	(53,837)	(54,283)		



SETTLEMENTS REPORT  
November 2018 Settlement Adjustment  
April 5, 2019

4-Month Settlement Adjustment – Market Supply Analysis

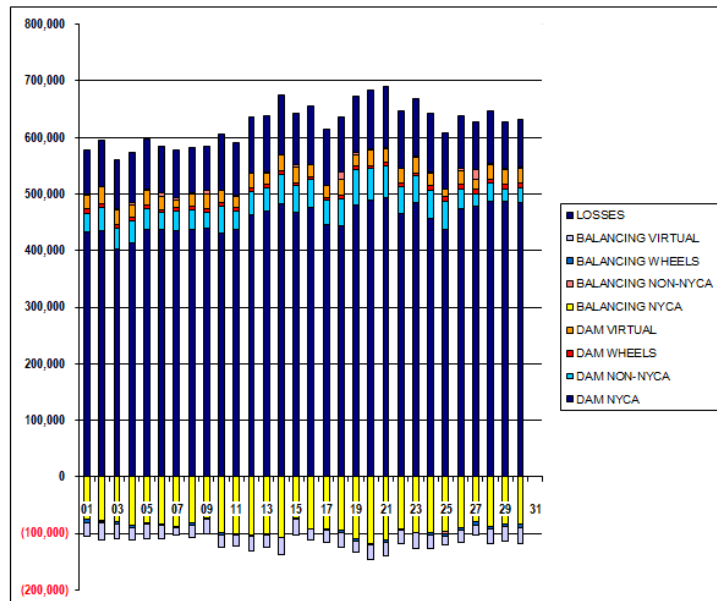
	MONDAY	TUESDAY	WEDNESDAY	THURSDAY	FRIDAY	SATURDAY	SUNDAY
DAM NYCA				1	2	3	4
DAM NON-NYCA				363,026	374,759	366,115	375,018
DAM WHEELS				89,913	96,210	62,684	70,305
DAM VIRTUAL				9,163	6,800	7,346	6,536
BALANCING NYCA				46,691	46,743	46,268	40,229
BALANCING NON-NYCA				7,402	5,289	12,326	1,770
BALANCING WHEELS				8,562	3,422	5,945	10,633
BALANCING VIRTUAL				(5,563)	(3,200)	(3,746)	(2,786)
				(46,691)	(46,743)	(46,268)	(40,229)
	5	6	7	8	9	10	11
DAM NYCA	383,085	383,187	371,179	371,735	381,508	387,882	388,132
DAM NON-NYCA	84,255	68,850	77,216	84,302	85,520	65,499	64,677
DAM WHEELS	5,344	5,053	5,916	6,073	6,061	5,693	4,579
DAM VIRTUAL	44,512	50,632	47,231	49,861	40,161	59,224	50,553
BALANCING NYCA	13,695	16,901	21,503	13,497	13,437	10,238	2,136
BALANCING NON-NYCA	3,440	8,484	144	1,959	410	15,182	8,898
BALANCING WHEELS	(1,744)	(1,453)	(2,316)	(2,473)	(2,460)	(2,531)	(2,167)
BALANCING VIRTUAL	(44,512)	(50,632)	(47,231)	(49,861)	(40,161)	(59,224)	(50,553)
	12	13	14	15	16	17	18
DAM NYCA	416,227	419,717	434,119	409,672	415,281	396,167	398,587
DAM NON-NYCA	75,509	75,756	78,655	91,251	85,257	70,815	80,401
DAM WHEELS	6,340	6,131	5,407	5,517	4,837	5,608	7,710
DAM VIRTUAL	52,514	49,562	63,768	52,035	57,765	54,234	50,154
BALANCING NYCA	8,106	9,738	10,929	23,361	17,415	18,240	4,357
BALANCING NON-NYCA	1,313	5,951	11,501	13,332	19,176	9,032	23,976
BALANCING WHEELS	(2,727)	(2,530)	(1,807)	(2,517)	514	(2,008)	(4,110)
BALANCING VIRTUAL	(52,514)	(49,562)	(63,768)	(52,035)	(57,765)	(54,234)	(50,154)
	19	20	21	22	23	24	25
DAM NYCA	423,992	427,735	425,843	408,629	419,990	398,098	384,905
DAM NON-NYCA	96,140	96,245	99,191	88,151	90,931	85,380	73,941
DAM WHEELS	7,325	5,527	6,922	5,802	6,253	8,778	6,675
DAM VIRTUAL	53,855	58,554	58,667	52,528	57,731	56,007	52,476
BALANCING NYCA	615	(3,381)	7,446	17,635	9,545	18,164	15,051
BALANCING NON-NYCA	14,933	13,212	15,145	10,964	18,638	13,285	10,760
BALANCING WHEELS	(3,842)	(2,975)	(3,602)	(1,953)	(1,374)	(5,122)	(5,075)
BALANCING VIRTUAL	(53,855)	(58,554)	(58,667)	(52,528)	(57,731)	(56,007)	(52,476)
	26	27	28	29	30		
DAM NYCA	399,834	399,488	405,010	419,467	403,367		
DAM NON-NYCA	89,339	77,756	93,293	73,512	90,241		
DAM WHEELS	8,357	8,931	7,816	7,995	9,880		
DAM VIRTUAL	54,076	52,008	57,862	53,837	54,283		
BALANCING NYCA	20,820	27,893	24,921	6,941	10,496		
BALANCING NON-NYCA	7,015	18,071	1,039	11,177	5,995		
BALANCING WHEELS	(4,757)	(5,331)	(4,215)	(4,345)	(6,280)		
BALANCING VIRTUAL	(54,076)	(52,008)	(57,862)	(53,837)	(54,283)		



SETTLEMENTS REPORT  
November 2018 Settlement Adjustment  
April 5, 2019

Initial Settlement – Market Withdrawals Analysis

	MONDAY	TUESDAY	WEDNESDAY	THURSDAY	FRIDAY	SATURDAY	SUNDAY
				1	2	3	4
DAM NYCA				433,082	434,074	402,953	413,576
DAM NON-NYCA				32,029	41,051	36,422	38,523
DAM WHEELS				9,163	6,800	7,346	6,536
DAM VIRTUAL				23,566	31,250	25,083	22,819
BALANCING NYCA				(75,056)	(76,617)	(79,851)	(86,691)
BALANCING NON-NYCA				2,083	(1,748)	2,297	3,157
BALANCING WHEELS				(5,563)	(3,200)	(3,746)	(2,786)
BALANCING VIRTUAL				(23,566)	(31,250)	(25,083)	(22,819)
UFELOSSES				76,780	82,913	85,316	89,212
	5	6	7	8	9	10	11
DAM NYCA	437,041	436,422	434,259	438,113	439,437	431,645	437,833
DAM NON-NYCA	37,278	30,529	35,291	34,177	28,806	47,326	32,767
DAM WHEELS	5,344	5,053	5,916	6,073	6,061	5,693	4,579
DAM VIRTUAL	25,959	23,762	14,300	21,928	26,306	21,683	20,889
BALANCING NYCA	(81,008)	(84,302)	(87,257)	(82,361)	(71,934)	(99,127)	(100,501)
BALANCING NON-NYCA	3,493	5,424	2,607	1,080	4,791	(405)	1,993
BALANCING WHEELS	(1,744)	(1,453)	(2,316)	(2,473)	(2,460)	(2,531)	(2,167)
BALANCING VIRTUAL	(25,959)	(23,762)	(14,300)	(21,928)	(26,306)	(21,683)	(20,889)
UFELOSSES	87,738	82,651	85,212	80,653	79,842	99,422	91,799
	12	13	14	15	16	17	18
DAM NYCA	484,032	470,731	483,635	468,128	475,519	444,972	444,021
DAM NON-NYCA	41,074	39,673	51,334	46,046	50,800	43,719	46,784
DAM WHEELS	6,340	6,131	5,407	5,517	4,837	5,608	7,710
DAM VIRTUAL	25,773	21,124	28,293	27,360	20,381	21,832	27,247
BALANCING NYCA	(102,886)	(100,212)	(106,674)	(72,489)	(91,580)	(92,545)	(93,625)
BALANCING NON-NYCA	(64)	1,361	1,015	4,872	686	(471)	13,007
BALANCING WHEELS	(2,727)	(2,530)	(1,807)	(2,517)	514	(2,008)	(4,110)
BALANCING VIRTUAL	(25,773)	(21,124)	(28,293)	(27,360)	(20,381)	(21,832)	(27,247)
UFELOSSES	99,055	99,664	105,972	91,096	101,752	98,626	97,187
	19	20	21	22	23	24	25
DAM NYCA	480,800	489,247	493,783	464,904	483,807	457,622	436,639
DAM NON-NYCA	61,506	55,538	55,515	49,869	47,491	49,004	50,398
DAM WHEELS	7,326	5,527	6,922	5,802	6,263	8,778	8,675
DAM VIRTUAL	20,411	26,602	23,355	24,844	26,960	22,236	13,771
BALANCING NYCA	(110,380)	(117,568)	(112,675)	(92,270)	(98,324)	(98,616)	(96,234)
BALANCING NON-NYCA	3,077	2,135	3,042	1,949	3,149	2,065	(4,389)
BALANCING WHEELS	(3,642)	(2,975)	(3,602)	(1,953)	(1,374)	(5,122)	(5,075)
BALANCING VIRTUAL	(20,411)	(26,602)	(23,355)	(24,844)	(26,960)	(22,236)	(13,771)
UFELOSSES	100,710	104,496	108,016	101,526	101,777	103,496	98,296
	26	27	28	29	30		
DAM NYCA	474,729	477,590	487,143	486,419	483,718		
DAM NON-NYCA	34,859	23,106	31,441	22,425	26,085		
DAM WHEELS	8,357	8,931	7,816	7,995	9,880		
DAM VIRTUAL	22,073	17,013	26,297	26,334	26,653		
BALANCING NYCA	(90,228)	(79,788)	(87,910)	(82,579)	(84,298)		
BALANCING NON-NYCA	4,846	16,643	1,699	2,710	765		
BALANCING WHEELS	(4,757)	(5,331)	(4,216)	(4,345)	(6,280)		
BALANCING VIRTUAL	(22,073)	(17,013)	(26,297)	(26,334)	(26,653)		
UFELOSSES	92,537	84,955	91,975	82,182	83,912		

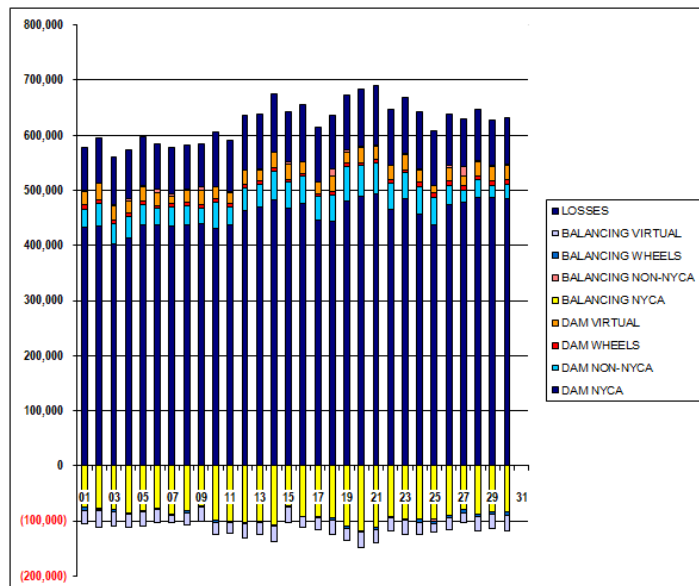




SETTLEMENTS REPORT  
November 2018 Settlement Adjustment  
April 5, 2019

4-Month Settlement Adjustment – Market Withdrawals Analysis

	MONDAY	TUESDAY	WEDNESDAY	THURSDAY	FRIDAY	SATURDAY	SUNDAY
				1	2	3	4
DAM NYCA				433,082	434,074	402,953	413,576
DAM NON-NYCA				32,029	41,051	36,422	38,523
DAM WHEELS				9,163	6,800	7,346	6,536
DAM VIRTUAL				23,566	31,250	25,083	22,819
BALANCING NYCA				(75,071)	(76,600)	(79,917)	(86,031)
BALANCING NON-NYCA				2,083	(1,748)	2,297	3,157
BALANCING WHEELS				(5,553)	(3,200)	(3,749)	(2,789)
BALANCING VIRTUAL				(23,566)	(31,250)	(25,083)	(22,819)
UFE/LOSSES				76,780	82,913	85,316	88,501
	5	6	7	8	9	10	11
DAM NYCA	437,041	436,422	434,259	438,113	439,437	431,645	437,833
DAM NON-NYCA	37,278	30,529	35,291	34,177	28,806	47,326	32,767
DAM WHEELS	5,344	5,053	5,916	6,073	6,061	5,693	4,579
DAM VIRTUAL	25,959	23,762	14,300	21,928	26,306	21,683	20,889
BALANCING NYCA	(81,076)	(77,603)	(87,329)	(82,493)	(72,001)	(99,184)	(100,534)
BALANCING NON-NYCA	3,493	5,424	2,607	1,080	4,791	(405)	1,993
BALANCING WHEELS	(1,744)	(1,453)	(2,316)	(2,473)	(2,460)	(2,531)	(2,167)
BALANCING VIRTUAL	(25,959)	(23,762)	(14,300)	(21,928)	(26,306)	(21,683)	(20,889)
UFE/LOSSES	87,740	82,650	85,214	80,616	79,843	99,418	91,784
	12	13	14	15	16	17	18
DAM NYCA	464,032	470,731	483,635	468,128	475,519	444,972	444,021
DAM NON-NYCA	41,074	39,673	51,334	46,046	50,800	43,719	46,784
DAM WHEELS	6,340	6,131	5,407	5,517	4,837	5,608	7,710
DAM VIRTUAL	25,773	21,124	28,293	27,360	20,381	21,832	27,247
BALANCING NYCA	(102,941)	(100,271)	(106,711)	(72,509)	(91,629)	(92,592)	(93,677)
BALANCING NON-NYCA	(64)	1,361	1,015	4,872	686	(471)	13,007
BALANCING WHEELS	(2,727)	(2,530)	(1,807)	(2,517)	514	(2,008)	(4,110)
BALANCING VIRTUAL	(25,773)	(21,124)	(28,293)	(27,360)	(20,381)	(21,832)	(27,247)
UFE/LOSSES	98,052	98,668	105,932	91,079	101,753	98,626	97,186
	19	20	21	22	23	24	25
DAM NYCA	480,800	489,247	493,783	464,904	483,807	457,622	436,639
DAM NON-NYCA	61,506	55,538	55,515	48,869	47,491	49,004	50,396
DAM WHEELS	7,326	5,527	6,922	5,802	6,263	6,778	6,675
DAM VIRTUAL	20,411	26,602	23,355	24,844	26,960	22,236	13,771
BALANCING NYCA	(110,413)	(118,169)	(112,725)	(91,855)	(97,129)	(97,271)	(96,286)
BALANCING NON-NYCA	3,077	2,135	3,042	1,949	3,149	2,065	(4,389)
BALANCING WHEELS	(3,842)	(2,975)	(3,802)	(1,953)	(1,374)	(5,122)	(5,075)
BALANCING VIRTUAL	(20,411)	(26,602)	(23,355)	(24,844)	(26,960)	(22,236)	(13,771)
UFE/LOSSES	100,710	105,060	108,011	101,513	101,786	103,486	98,297
	26	27	28	29	30		
DAM NYCA	474,729	477,590	487,143	486,419	483,718		
DAM NON-NYCA	34,858	23,108	31,441	22,425	26,085		
DAM WHEELS	8,357	8,931	7,816	7,995	9,880		
DAM VIRTUAL	22,073	17,013	26,297	26,334	26,653		
BALANCING NYCA	(89,963)	(79,842)	(87,995)	(82,643)	(84,365)		
BALANCING NON-NYCA	4,846	16,643	1,699	2,710	765		
BALANCING WHEELS	(4,757)	(5,331)	(4,216)	(4,345)	(6,280)		
BALANCING VIRTUAL	(22,073)	(17,013)	(26,297)	(26,334)	(26,653)		
UFE/LOSSES	92,538	85,708	91,975	82,186	83,917		

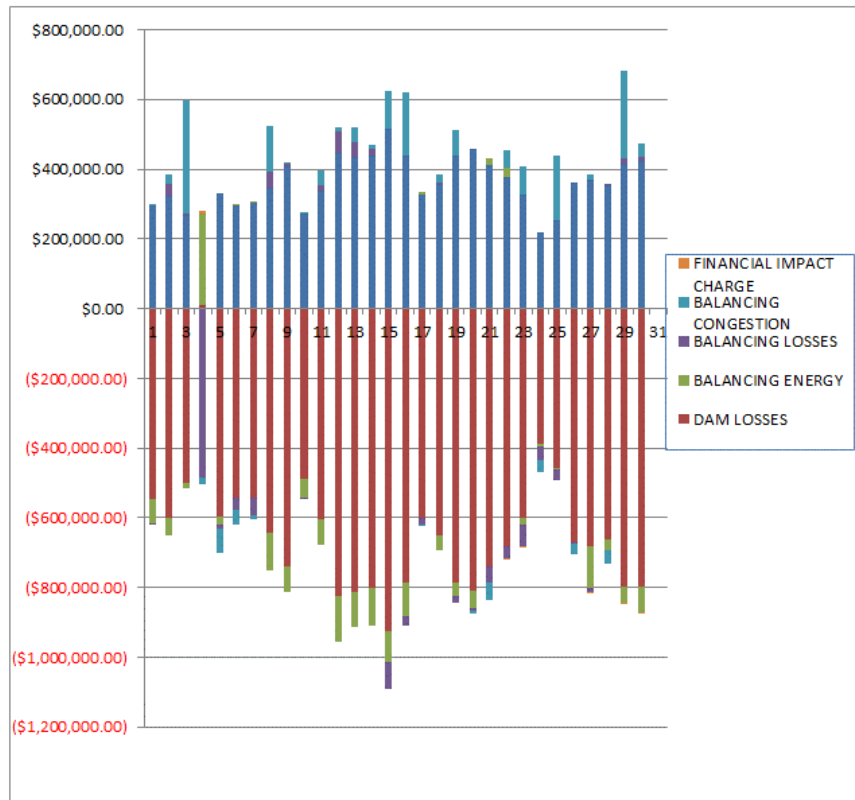




SETTLEMENTS REPORT  
November 2018 Settlement Adjustment  
April 5, 2019

Initial Settlement – Market Residuals Analysis

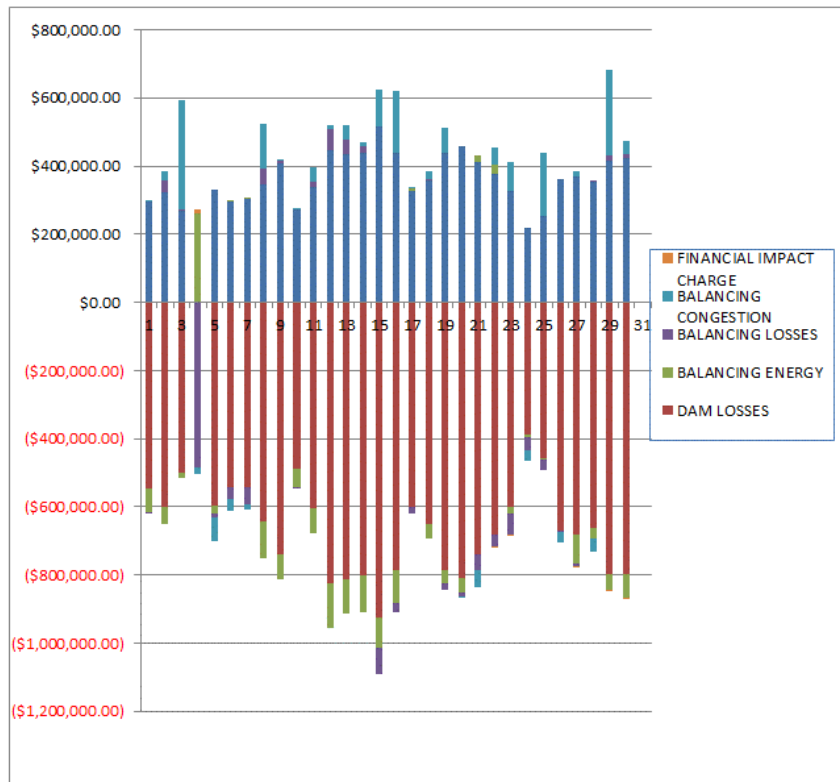
	MONDAY	TUESDAY	WEDNESDAY	THURSDAY	FRIDAY	SATURDAY	SUNDAY
				1	2	3	4
DAM ENERGY				\$294,496.24	\$322,972.64	\$268,280.91	\$207.18
DAM LOSSES				(\$547,263.12)	(\$598,818.32)	(\$499,081.02)	\$8,620.66
BALANCING ENERGY				(\$68,150.77)	(\$49,760.84)	(\$17,661.54)	\$262,872.75
BALANCING LOSSES				(\$4,319.05)	\$33,071.68	\$4,702.60	(\$484,397.74)
BALANCING CONGESTION				\$700.60	\$27,597.20	\$323,579.60	(\$19,544.16)
FINANCIAL IMPACT CHARGE				\$0.00	\$0.00	\$0.00	\$8,707.24
	5	6	7	8	9	10	11
DAM ENERGY	\$329,644.37	\$297,732.92	\$303,788.70	\$345,385.37	\$409,649.79	\$272,002.10	\$338,673.29
DAM LOSSES	(\$596,418.52)	(\$540,574.95)	(\$542,153.91)	(\$644,577.07)	(\$737,800.28)	(\$487,589.95)	(\$605,534.71)
BALANCING ENERGY	(\$22,796.19)	\$1,155.17	\$5,573.50	(\$106,731.46)	(\$75,028.54)	(\$56,315.69)	(\$71,348.63)
BALANCING LOSSES	(\$12,323.32)	(\$35,956.03)	(\$50,402.35)	\$46,124.26	\$4,529.78	(\$1,353.99)	\$15,962.66
BALANCING CONGESTION	(\$70,850.53)	(\$43,224.66)	(\$10,468.37)	\$134,013.48	\$6,994.11	\$2,552.41	\$41,475.14
FINANCIAL IMPACT CHARGE	\$0.00	\$0.00	\$0.00	\$0.00	\$0.00	\$0.00	\$0.00
	12	13	14	15	16	17	18
DAM ENERGY	\$447,637.93	\$434,648.72	\$438,715.60	\$514,529.76	\$440,693.93	\$325,379.40	\$358,021.34
DAM LOSSES	(\$823,077.55)	(\$813,542.53)	(\$801,991.44)	(\$923,101.01)	(\$785,185.92)	(\$598,748.28)	(\$648,737.03)
BALANCING ENERGY	(\$133,682.36)	(\$98,276.74)	(\$107,315.82)	(\$91,275.10)	(\$98,249.80)	\$9,094.86	(\$43,665.76)
BALANCING LOSSES	\$61,084.38	\$43,799.86	\$20,784.74	(\$75,452.87)	(\$25,785.26)	(\$20,943.34)	\$1,867.06
BALANCING CONGESTION	\$12,848.66	\$43,088.62	\$10,028.49	\$110,059.73	\$179,024.75	(\$622.30)	\$26,125.90
FINANCIAL IMPACT CHARGE	\$0.00	\$0.00	\$0.00	\$0.00	\$0.00	\$0.00	\$0.00
	19	20	21	22	23	24	25
DAM ENERGY	\$438,798.73	\$457,068.83	\$412,817.94	\$376,111.59	\$327,945.45	\$218,766.92	\$251,805.04
DAM LOSSES	(\$786,558.02)	(\$810,493.09)	(\$739,020.71)	(\$683,149.29)	(\$599,819.00)	(\$388,683.19)	(\$458,751.99)
BALANCING ENERGY	(\$36,185.72)	(\$46,709.99)	\$17,503.55	\$27,872.01	(\$20,153.01)	(\$7,830.02)	(\$2,494.04)
BALANCING LOSSES	(\$21,524.58)	(\$10,984.14)	(\$46,132.85)	(\$33,854.93)	(\$60,319.71)	(\$36,989.30)	(\$30,002.25)
BALANCING CONGESTION	\$73,504.75	(\$5,119.17)	(\$51,173.85)	\$52,330.40	\$80,178.99	(\$34,627.36)	\$185,250.64
FINANCIAL IMPACT CHARGE	\$0.00	\$0.00	\$0.00	(\$30.88)	(\$825.32)	\$0.00	\$0.00
	26	27	28	29	30		
DAM ENERGY	\$361,384.55	\$369,554.07	\$354,256.83	\$416,010.04	\$424,104.52		
DAM LOSSES	(\$669,523.99)	(\$681,694.63)	(\$662,417.16)	(\$795,709.68)	(\$795,589.22)		
BALANCING ENERGY	(\$2,071.00)	(\$119,033.02)	(\$30,162.84)	(\$49,778.62)	(\$73,276.24)		
BALANCING LOSSES	(\$2,493.55)	(\$11,326.56)	\$1,270.90	\$14,987.27	\$11,936.84		
BALANCING CONGESTION	(\$31,285.30)	\$16,927.84	(\$39,220.72)	\$252,514.57	\$39,338.92		
FINANCIAL IMPACT CHARGE	\$0.00	(\$0.75)	\$0.00	(\$46.50)	(\$267.56)		



SETTLEMENTS REPORT  
November 2018 Settlement Adjustment  
April 5, 2019

4-Month Settlement Adjustment – Market Residuals Analysis

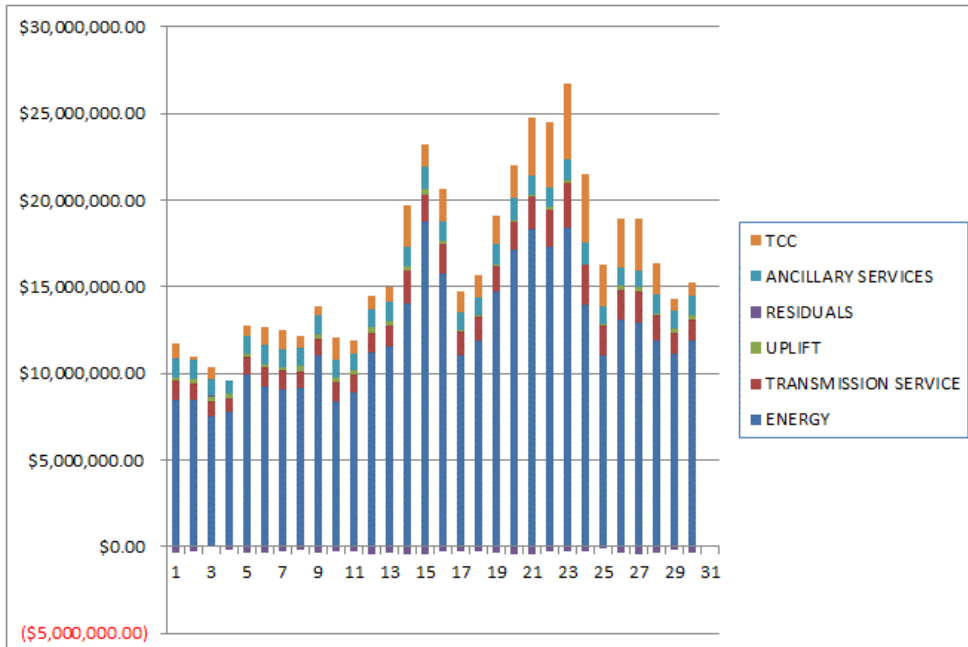
	MONDAY	TUESDAY	WEDNESDAY	THURSDAY	FRIDAY	SATURDAY	SUNDAY
				1	2	3	4
DAM ENERGY				\$294,496.24	\$322,972.63	\$268,280.92	\$207.18
DAM LOSSES				(\$547,263.12)	(\$598,818.32)	(\$498,081.02)	(\$1,081.88)
BALANCING ENERGY				(\$68,166.79)	(\$49,822.70)	(\$17,666.05)	\$262,872.75
BALANCING LOSSES				(\$4,476.62)	\$32,975.93	\$4,649.52	(\$484,397.73)
BALANCING CONGESTION				\$702.15	\$27,547.46	\$321,657.44	(\$19,667.51)
FINANCIAL IMPACT CHARGE				\$0.00	\$0.00	\$0.00	\$8,707.23
	5	6	7	8	9	10	11
DAM ENERGY	\$329,644.37	\$297,732.92	\$303,788.69	\$345,385.37	\$409,649.79	\$272,002.11	\$338,673.30
DAM LOSSES	(\$586,418.52)	(\$540,574.95)	(\$542,153.92)	(\$644,577.08)	(\$737,800.27)	(\$487,589.95)	(\$605,534.70)
BALANCING ENERGY	(\$22,759.61)	\$1,364.90	\$5,597.83	(\$107,754.64)	(\$75,028.82)	(\$56,313.95)	(\$71,471.72)
BALANCING LOSSES	(\$12,220.81)	(\$37,625.19)	(\$50,394.32)	\$45,928.87	\$4,498.22	(\$1,458.77)	\$16,061.70
BALANCING CONGESTION	(\$70,850.52)	(\$32,694.44)	(\$14,450.11)	\$133,917.35	\$6,225.10	\$1,144.73	\$41,580.13
FINANCIAL IMPACT CHARGE	\$0.00	\$0.00	\$0.00	\$0.00	\$0.00	\$0.00	\$0.00
	12	13	14	15	16	17	18
DAM ENERGY	\$447,637.93	\$434,648.72	\$438,715.61	\$514,529.76	\$440,693.93	\$325,379.40	\$358,021.33
DAM LOSSES	(\$823,077.56)	(\$813,542.54)	(\$801,991.45)	(\$923,101.01)	(\$785,185.92)	(\$598,748.27)	(\$646,737.04)
BALANCING ENERGY	(\$133,570.08)	(\$98,097.54)	(\$107,294.04)	(\$91,492.65)	(\$98,345.37)	\$9,090.39	(\$43,710.22)
BALANCING LOSSES	\$61,272.53	\$43,896.56	\$20,835.48	(\$75,333.12)	(\$25,795.11)	(\$21,027.53)	\$1,860.37
BALANCING CONGESTION	\$12,844.98	\$42,321.61	\$10,166.77	\$110,078.58	\$179,113.92	\$521.37	\$26,271.83
FINANCIAL IMPACT CHARGE	\$0.00	\$0.00	\$0.00	\$0.00	\$0.00	\$0.00	\$0.00
	19	20	21	22	23	24	25
DAM ENERGY	\$438,798.73	\$457,068.83	\$412,817.93	\$376,111.58	\$327,945.45	\$218,766.92	\$251,805.04
DAM LOSSES	(\$786,558.03)	(\$810,493.09)	(\$739,020.71)	(\$683,149.29)	(\$599,819.00)	(\$388,683.19)	(\$458,751.99)
BALANCING ENERGY	(\$36,197.69)	(\$41,504.55)	\$17,524.13	\$27,233.31	(\$19,957.42)	(\$7,471.75)	(\$2,426.36)
BALANCING LOSSES	(\$21,530.70)	(\$11,077.46)	(\$46,215.81)	(\$34,210.65)	(\$59,734.76)	(\$36,592.68)	(\$30,075.00)
BALANCING CONGESTION	\$73,337.94	(\$3,155.65)	(\$50,358.69)	\$52,483.42	\$62,321.67	(\$32,071.13)	\$165,872.58
FINANCIAL IMPACT CHARGE	\$0.00	\$0.00	\$0.00	(\$30.91)	(\$825.29)	\$0.00	\$0.00
	26	27	28	29	30		
DAM ENERGY	\$361,384.55	\$369,554.07	\$354,256.83	\$416,010.04	\$424,104.52		
DAM LOSSES	(\$669,523.99)	(\$681,694.63)	(\$662,417.16)	(\$795,709.68)	(\$795,589.22)		
BALANCING ENERGY	(\$2,034.91)	(\$84,199.10)	(\$30,204.58)	(\$49,563.22)	(\$73,069.09)		
BALANCING LOSSES	(\$2,229.42)	(\$9,847.53)	\$1,256.60	\$14,903.35	\$11,709.97		
BALANCING CONGESTION	(\$31,291.14)	\$17,155.56	(\$39,371.32)	\$252,526.97	\$39,345.40		
FINANCIAL IMPACT CHARGE	\$0.00	(\$0.73)	\$0.00	(\$46.61)	(\$267.57)		



SETTLEMENTS REPORT  
November 2018 Settlement Adjustment  
April 5, 2019

Initial Settlement – Market Costs Analysis

	MONDAY	TUESDAY	WEDNESDAY	THURSDAY	FRIDAY	SATURDAY	SUNDAY
ENERGY				1	2	3	4
TRANSMISSION SERVICE				\$8,435,376.47	\$8,475,887.45	\$7,549,171.41	\$7,793,689.12
UPLIFT				\$1,113,726.65	\$907,310.41	\$860,519.97	\$792,657.50
RESIDUALS				\$214,222.95	\$300,107.57	\$222,547.91	\$205,892.47
ANCILLARY SERVICES				(\$324,536.10)	(\$264,937.64)	\$79,820.55	(\$220,309.28)
TCC				\$1,151,006.77	\$1,087,772.97	\$972,715.36	\$826,140.90
				\$856,464.65	\$208,987.23	\$632,135.55	\$0.00
	5	6	7	8	9	10	11
ENERGY	\$9,970,123.27	\$9,260,238.38	\$9,099,940.33	\$9,123,603.18	\$11,030,036.63	\$8,370,172.15	\$8,909,549.09
TRANSMISSION SERVICE	\$989,471.10	\$1,111,158.50	\$1,096,764.97	\$996,362.20	\$998,343.71	\$1,156,327.46	\$1,054,046.36
UPLIFT	\$161,833.82	\$156,819.39	\$183,572.96	\$296,831.72	\$238,666.36	\$272,880.82	\$191,427.26
RESIDUALS	(\$372,744.19)	(\$320,867.55)	(\$293,662.43)	(\$225,785.42)	(\$391,655.14)	(\$270,705.12)	(\$280,772.25)
ANCILLARY SERVICES	\$1,064,657.48	\$1,074,299.88	\$1,041,640.10	\$1,048,920.38	\$1,131,160.58	\$1,016,893.65	\$1,009,478.66
TCC	\$556,794.91	\$1,102,029.74	\$1,103,631.66	\$718,328.08	\$505,376.98	\$1,280,129.60	\$762,531.02
	12	13	14	15	16	17	18
ENERGY	\$11,200,620.35	\$11,559,135.10	\$14,071,493.30	\$18,738,429.14	\$15,773,006.51	\$11,077,405.62	\$11,879,118.28
TRANSMISSION SERVICE	\$1,163,222.44	\$1,238,466.22	\$1,848,167.93	\$1,525,906.17	\$1,688,516.26	\$1,309,425.32	\$1,356,015.49
UPLIFT	\$312,605.79	\$255,375.34	\$253,841.64	\$357,506.53	\$141,332.89	\$72,231.42	\$117,835.66
RESIDUALS	(\$435,188.94)	(\$390,282.07)	(\$439,778.43)	(\$465,239.49)	(\$289,502.30)	(\$285,839.66)	(\$306,388.49)
ANCILLARY SERVICES	\$1,047,866.46	\$1,057,524.34	\$1,102,970.29	\$1,298,979.28	\$1,170,874.86	\$1,093,774.97	\$1,022,054.67
TCC	\$754,287.01	\$896,156.46	\$2,420,114.32	\$1,312,175.42	\$1,854,340.26	\$1,168,644.01	\$1,336,383.76
	19	20	21	22	23	24	25
ENERGY	\$14,713,439.43	\$17,136,831.59	\$18,290,073.40	\$17,314,500.81	\$18,413,711.91	\$13,961,916.07	\$11,000,329.41
TRANSMISSION SERVICE	\$1,480,954.44	\$1,589,700.46	\$1,919,625.17	\$2,159,031.65	\$2,538,085.54	\$2,299,428.92	\$1,773,469.72
UPLIFT	\$116,822.12	\$130,503.60	\$67,831.32	\$135,741.83	\$234,994.24	\$39,230.61	\$33,891.36
RESIDUALS	(\$331,964.84)	(\$416,237.56)	(\$406,005.92)	(\$260,721.10)	(\$272,992.60)	(\$249,362.95)	(\$54,192.60)
ANCILLARY SERVICES	\$1,196,761.69	\$1,262,817.46	\$1,162,288.48	\$1,103,511.78	\$1,209,120.97	\$1,248,689.18	\$1,030,787.49
TCC	\$1,569,635.82	\$1,899,154.25	\$3,304,673.09	\$3,796,305.20	\$4,326,382.09	\$3,917,223.34	\$2,461,064.15
	26	27	28	29	30		
ENERGY	\$13,089,914.66	\$12,965,278.10	\$11,875,589.53	\$11,109,566.89	\$11,890,522.97		
TRANSMISSION SERVICE	\$1,751,481.20	\$1,781,753.62	\$1,491,942.87	\$1,242,992.14	\$1,241,854.69		
UPLIFT	\$196,330.28	\$199,466.08	\$116,714.84	\$191,784.76	\$244,791.95		
RESIDUALS	(\$343,989.29)	(\$425,573.05)	(\$376,272.99)	(\$162,022.92)	(\$393,752.74)		
ANCILLARY SERVICES	\$1,084,970.30	\$1,014,725.10	\$1,075,790.52	\$1,059,411.51	\$1,133,470.61		
TCC	\$2,762,616.67	\$2,978,990.69	\$1,765,165.00	\$726,127.62	\$744,526.67		



SETTLEMENTS REPORT  
November 2018 Settlement Adjustment  
April 5, 2019

4-Month Settlement Adjustment – Market Costs Analysis

	MONDAY	TUESDAY	WEDNESDAY	THURSDAY	FRIDAY	SATURDAY	SUNDAY
ENERGY				1	2	3	4
TRANSMISSION SERVICE				\$8,435,149.11	\$8,475,488.99	\$7,549,571.04	\$7,802,633.06
UPLIFT				\$1,112,367.74	\$905,972.14	\$859,149.84	\$792,052.55
RESIDUALS				\$214,222.93	\$300,107.52	\$222,547.91	\$205,892.47
ANCILLARY SERVICES				(\$324,708.14)	(\$265,145.00)	\$77,840.81	(\$230,226.02)
TCC				\$1,149,752.00	\$1,086,560.71	\$971,442.80	\$825,650.90
				\$856,513.85	\$209,020.89	\$632,150.13	\$0.00
	5	6	7	8	9	10	11
ENERGY	\$9,967,916.08	\$9,428,585.86	\$9,102,015.91	\$9,119,191.57	\$11,029,034.90	\$8,369,946.92	\$8,908,233.30
TRANSMISSION SERVICE	\$997,831.94	\$1,118,137.80	\$1,095,068.88	\$994,398.11	\$996,986.72	\$1,154,836.27	\$1,052,693.73
UPLIFT	\$161,833.86	\$157,109.48	\$183,572.97	\$297,763.51	\$238,666.35	\$272,880.84	\$191,427.26
RESIDUALS	(\$372,605.09)	(\$311,796.76)	(\$297,511.83)	(\$327,100.13)	(\$392,455.98)	(\$272,215.83)	(\$280,691.29)
ANCILLARY SERVICES	\$1,062,792.54	\$1,081,110.45	\$1,039,115.50	\$1,046,956.01	\$1,129,694.62	\$1,015,720.83	\$1,010,557.22
TCC	\$557,191.66	\$1,102,952.12	\$1,104,636.78	\$718,508.98	\$505,624.51	\$1,279,970.30	\$760,249.13
	12	13	14	15	16	17	18
ENERGY	\$11,198,201.54	\$11,557,658.22	\$14,068,131.38	\$18,735,794.93	\$15,770,168.08	\$11,074,722.08	\$11,877,437.40
TRANSMISSION SERVICE	\$1,161,990.70	\$1,237,058.38	\$1,846,723.95	\$1,524,473.94	\$1,687,118.33	\$1,308,134.61	\$1,354,744.57
UPLIFT	\$312,604.64	\$255,375.34	\$253,841.65	\$357,506.58	\$141,332.89	\$72,231.42	\$117,835.65
RESIDUALS	(\$434,892.20)	(\$390,773.19)	(\$439,567.63)	(\$465,318.44)	(\$289,518.55)	(\$284,784.64)	(\$306,293.73)
ANCILLARY SERVICES	\$1,048,409.57	\$1,059,367.75	\$1,101,002.08	\$1,297,118.38	\$1,168,447.62	\$1,092,499.90	\$1,020,836.84
TCC	\$752,640.79	\$893,052.81	\$2,420,795.29	\$1,312,773.02	\$1,855,518.00	\$1,168,764.91	\$1,336,463.95
	19	20	21	22	23	24	25
ENERGY	\$14,712,373.29	\$17,128,530.01	\$18,287,274.29	\$17,343,979.86	\$18,445,501.69	\$13,993,774.11	\$10,996,592.82
TRANSMISSION SERVICE	\$1,479,612.74	\$1,587,610.81	\$1,918,264.16	\$2,158,222.62	\$2,538,271.73	\$2,299,945.49	\$1,772,211.73
UPLIFT	\$116,822.10	\$130,503.60	\$67,831.32	\$135,741.82	\$234,994.24	\$39,230.61	\$33,896.95
RESIDUALS	(\$332,149.75)	(\$409,161.92)	(\$405,253.15)	(\$261,562.54)	(\$270,069.35)	(\$246,051.83)	(\$53,575.73)
ANCILLARY SERVICES	\$1,195,522.25	\$1,260,832.63	\$1,160,800.14	\$1,102,885.52	\$1,209,832.01	\$1,249,853.77	\$1,029,863.01
TCC	\$1,569,679.47	\$1,899,280.55	\$3,304,946.54	\$3,796,331.27	\$4,326,166.15	\$3,916,876.09	\$2,460,862.04
	26	27	28	29	30		
ENERGY	\$13,097,977.04	\$12,962,586.61	\$11,872,706.54	\$11,106,425.44	\$11,887,992.71		
TRANSMISSION SERVICE	\$1,750,614.29	\$1,780,201.30	\$1,490,443.86	\$1,241,678.70	\$1,240,502.81		
UPLIFT	\$196,330.28	\$199,466.08	\$116,714.83	\$191,777.10	\$244,795.05		
RESIDUALS	(\$343,694.91)	(\$389,032.36)	(\$376,479.63)	(\$161,879.15)	(\$393,765.99)		
ANCILLARY SERVICES	\$1,081,562.50	\$1,011,695.41	\$1,071,070.94	\$1,056,716.70	\$1,131,388.47		
TCC	\$2,765,331.01	\$2,980,840.88	\$1,768,535.62	\$727,644.24	\$745,396.37		

