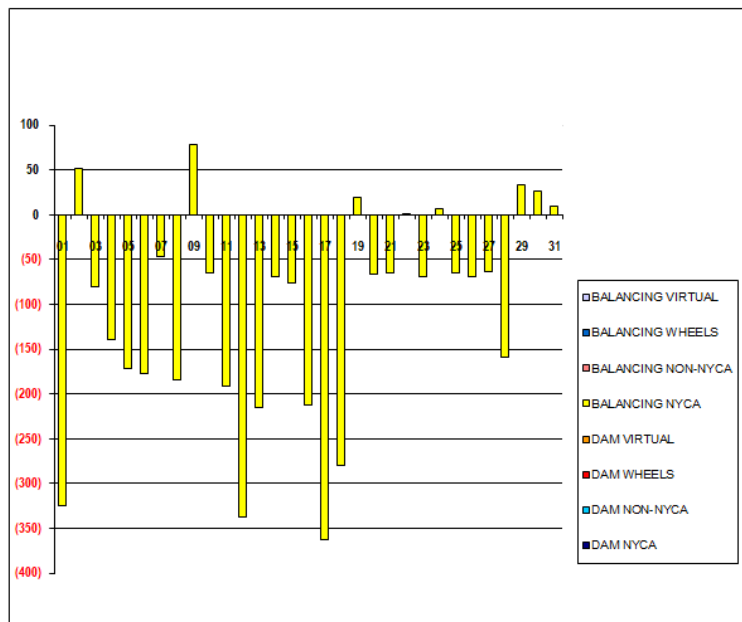


SETTLEMENTS REPORT
 January 2019 Settlement Adjustment
 June 7, 2019

Settlement Adjustment – Market Supply Delta Analysis

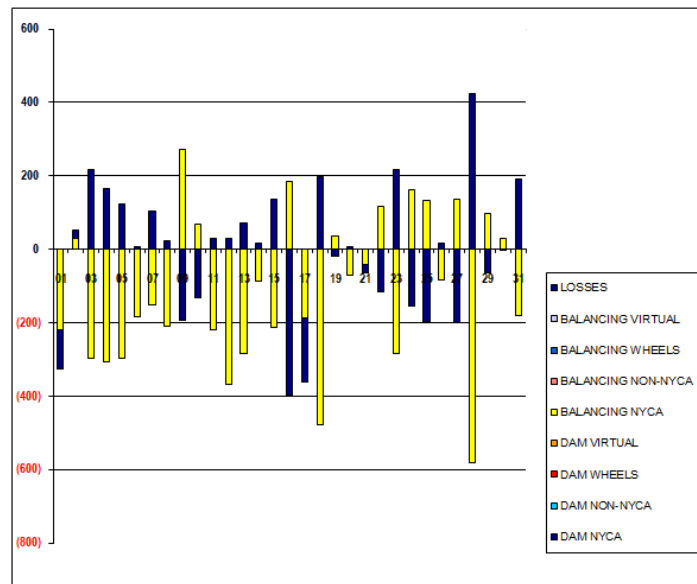
	MONDAY	TUESDAY	WEDNESDAY	THURSDAY	FRIDAY	SATURDAY	SUNDAY
		1	2	3	4	5	6
DAM NYCA		0	0	0	0	0	0
DAM NON-NYCA		0	0	0	0	0	0
DAM WHEELS		0	0	0	0	0	0
DAM VIRTUAL		0	0	0	0	0	0
BALANCING NYCA		(325)	51	(81)	(140)	(172)	(177)
BALANCING NON-NYCA		0	0	0	0	0	0
BALANCING WHEELS		0	0	0	0	0	0
BALANCING VIRTUAL		0	0	0	0	0	0
	7	8	9	10	11	12	13
DAM NYCA	0	0	0	0	0	0	0
DAM NON-NYCA	0	0	0	0	0	0	0
DAM WHEELS	0	0	0	0	0	0	0
DAM VIRTUAL	0	0	0	0	0	0	0
BALANCING NYCA	(46)	(184)	78	(66)	(192)	(338)	(216)
BALANCING NON-NYCA	0	0	0	0	0	0	0
BALANCING WHEELS	0	0	0	0	0	0	0
BALANCING VIRTUAL	0	0	0	0	0	0	0
	14	15	16	17	18	19	20
DAM NYCA	0	0	0	0	0	0	0
DAM NON-NYCA	0	0	0	0	0	0	0
DAM WHEELS	0	0	0	0	0	0	0
DAM VIRTUAL	0	0	0	0	0	0	0
BALANCING NYCA	(69)	(76)	(212)	(362)	(279)	19	(66)
BALANCING NON-NYCA	0	0	0	0	0	0	0
BALANCING WHEELS	0	0	0	0	0	0	0
BALANCING VIRTUAL	0	0	0	0	0	0	0
	21	22	23	24	25	26	27
DAM NYCA	0	0	0	0	0	0	0
DAM NON-NYCA	0	0	0	0	0	0	0
DAM WHEELS	0	0	0	0	0	0	0
DAM VIRTUAL	0	0	0	0	0	0	0
BALANCING NYCA	(65)	1	(69)	6	(65)	(69)	(64)
BALANCING NON-NYCA	0	0	0	0	0	0	0
BALANCING WHEELS	0	0	0	0	0	0	0
BALANCING VIRTUAL	0	0	0	0	0	0	0
	28	29	30	31			
DAM NYCA	0	0	0	0			
DAM NON-NYCA	0	0	0	0			
DAM WHEELS	0	0	0	0			
DAM VIRTUAL	0	0	0	0			
BALANCING NYCA	(159)	34	26	10			
BALANCING NON-NYCA	0	0	0	0			
BALANCING WHEELS	0	0	0	0			
BALANCING VIRTUAL	0	0	0	0			



SETTLEMENTS REPORT
January 2019 Settlement Adjustment
June 7, 2019

Settlement Adjustment – Market Withdrawals Delta Analysis

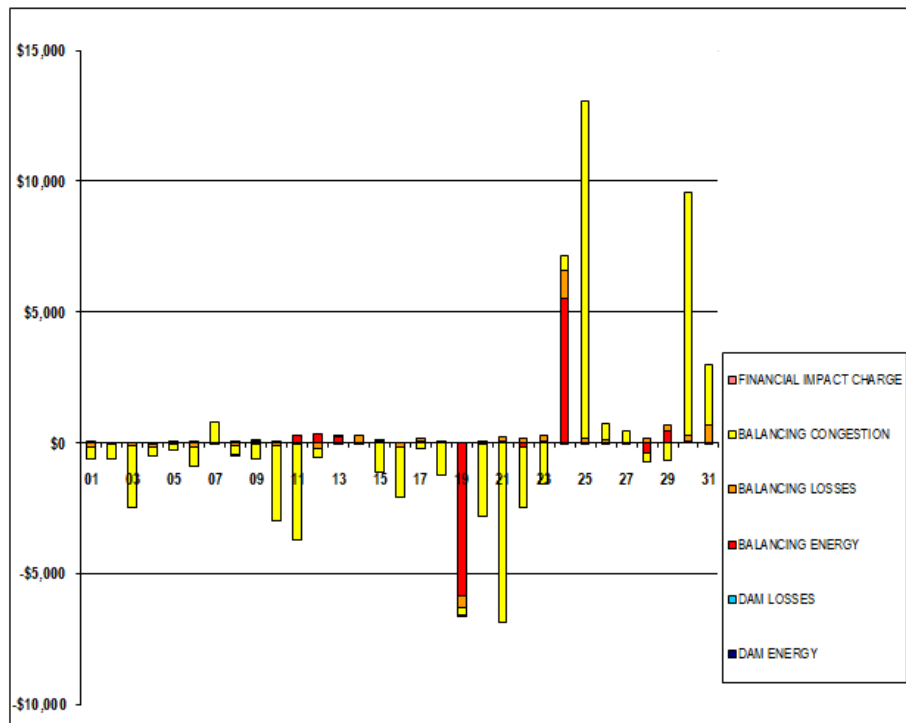
	MONDAY	TUESDAY	WEDNESDAY	THURSDAY	FRIDAY	SATURDAY	SUNDAY
		1	2	3	4	5	6
DAM NYCA		0	0	0	0	0	0
DAM NON-NYCA		0	0	0	0	0	0
DAM WHEELS		0	0	0	0	0	0
DAM VIRTUAL		0	0	0	0	0	0
BALANCING NYCA		(219)	31	(297)	(306)	(296)	(184)
BALANCING NON-NYCA		0	0	0	0	0	0
BALANCING WHEELS		0	0	0	0	0	0
BALANCING VIRTUAL		0	0	0	0	0	0
UFELOSSES		(106)	21	216	166	124	7
	7	8	9	10	11	12	13
DAM NYCA	0	0	0	0	0	0	0
DAM NON-NYCA	0	0	0	0	0	0	0
DAM WHEELS	0	0	0	0	0	0	0
DAM VIRTUAL	0	0	0	0	0	0	0
BALANCING NYCA	(151)	(209)	272	67	(220)	(366)	(286)
BALANCING NON-NYCA	0	0	0	0	0	0	0
BALANCING WHEELS	0	0	0	0	0	0	0
BALANCING VIRTUAL	0	0	0	0	0	0	0
UFELOSSES	105	24	(194)	(133)	28	30	70
	14	15	16	17	18	19	20
DAM NYCA	0	0	0	0	0	0	0
DAM NON-NYCA	0	0	0	0	0	0	0
DAM WHEELS	0	0	0	0	0	0	0
DAM VIRTUAL	0	0	0	0	0	0	0
BALANCING NYCA	(86)	(212)	185	(186)	(477)	37	(72)
BALANCING NON-NYCA	0	0	0	0	0	0	0
BALANCING WHEELS	0	0	0	0	0	0	0
BALANCING VIRTUAL	0	0	0	0	0	0	0
UFELOSSES	17	137	(397)	(177)	197	(19)	6
	21	22	23	24	25	26	27
DAM NYCA	0	0	0	0	0	0	0
DAM NON-NYCA	0	0	0	0	0	0	0
DAM WHEELS	0	0	0	0	0	0	0
DAM VIRTUAL	0	0	0	0	0	0	0
BALANCING NYCA	(41)	118	(286)	162	134	(85)	137
BALANCING NON-NYCA	0	0	0	0	0	0	0
BALANCING WHEELS	0	0	0	0	0	0	0
BALANCING VIRTUAL	0	0	0	0	0	0	0
UFELOSSES	(24)	(117)	216	(156)	(198)	16	(201)
	28	29	30	31			
DAM NYCA	0	0	0	0			
DAM NON-NYCA	0	0	0	0			
DAM WHEELS	0	0	0	0			
DAM VIRTUAL	0	0	0	0			
BALANCING NYCA	(582)	97	30	(181)			
BALANCING NON-NYCA	0	0	0	0			
BALANCING WHEELS	0	0	0	0			
BALANCING VIRTUAL	0	0	0	0			
UFELOSSES	423	(63)	(4)	191			



SETTLEMENTS REPORT
January 2019 Settlement Adjustment
June 7, 2019

Settlement Adjustment – Market Residuals Delta Analysis

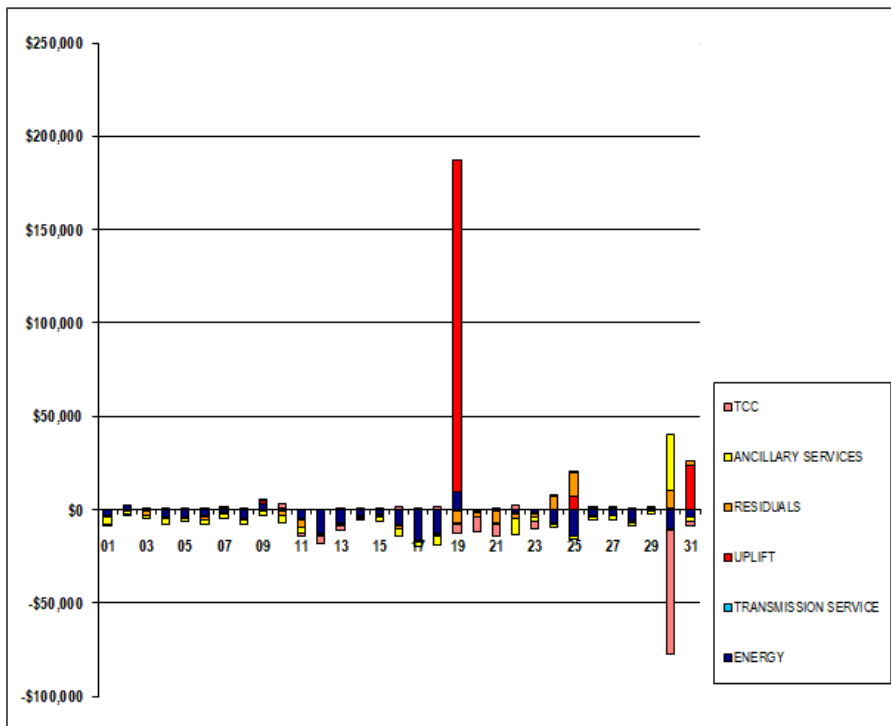
	MONDAY	TUESDAY	WEDNESDAY	THURSDAY	FRIDAY	SATURDAY	SUNDAY
		1	2	3	4	5	6
DAM ENERGY		\$0.00	\$0.00	(\$0.01)	\$0.00	(\$0.01)	\$0.00
DAM LOSSES		\$0.00	\$0.00	\$0.00	\$0.00	\$0.00	\$0.00
BALANCING ENERGY		(\$1.94)	(\$13.65)	(\$0.63)	(\$70.38)	\$13.10	\$0.06
BALANCING LOSSES		(\$164.40)	(\$62.26)	(\$109.20)	(\$80.45)	(\$82.87)	(\$156.42)
BALANCING CONGESTION		(\$464.59)	(\$570.27)	(\$2,377.58)	(\$356.49)	(\$187.86)	(\$761.90)
FINANCIAL IMPACT CHARGE		\$0.26	\$0.00	\$0.00	\$0.00	\$0.10	\$0.00
	7	8	9	10	11	12	13
DAM ENERGY	\$0.00	\$0.00	(\$0.01)	\$0.01	\$0.00	\$0.00	\$0.00
DAM LOSSES	\$0.01	\$0.01	\$0.00	\$0.00	\$0.00	\$0.00	(\$0.01)
BALANCING ENERGY	(\$7.15)	\$1.05	(\$75.16)	(\$4.95)	\$270.25	\$331.29	\$228.18
BALANCING LOSSES	(\$1.22)	(\$115.68)	\$45.18	(\$95.44)	(\$62.68)	(\$236.86)	\$4.81
BALANCING CONGESTION	\$793.65	(\$362.23)	(\$533.85)	(\$2,895.12)	(\$3,633.71)	(\$315.34)	\$42.48
FINANCIAL IMPACT CHARGE	(\$0.03)	(\$0.08)	\$0.07	\$0.00	\$0.00	\$0.00	\$0.00
	14	15	16	17	18	19	20
DAM ENERGY	\$0.00	\$0.00	(\$0.01)	\$0.00	\$0.01	\$0.00	\$0.01
DAM LOSSES	\$0.00	\$0.00	\$0.00	\$0.00	\$0.00	\$0.00	\$0.00
BALANCING ENERGY	(\$0.08)	\$26.66	(\$6.56)	\$37.99	(\$14.22)	(\$5,834.42)	(\$0.54)
BALANCING LOSSES	\$260.53	\$49.72	(\$152.84)	\$100.88	\$45.69	(\$487.56)	(\$60.50)
BALANCING CONGESTION	(\$64.35)	(\$1,116.44)	(\$1,946.44)	(\$216.14)	(\$1,230.05)	(\$258.34)	(\$2,738.53)
FINANCIAL IMPACT CHARGE	\$0.00	\$0.05	\$0.00	\$0.00	\$0.00	(\$0.05)	\$0.01
	21	22	23	24	25	26	27
DAM ENERGY	\$0.00	\$0.00	\$0.00	\$0.00	\$0.00	\$0.00	\$0.00
DAM LOSSES	\$0.00	\$0.00	\$0.01	(\$0.01)	\$0.01	\$0.00	\$0.00
BALANCING ENERGY	\$57.91	(\$151.00)	\$68.48	\$5,515.72	(\$11.53)	(\$0.20)	\$6.43
BALANCING LOSSES	\$169.75	\$141.10	\$181.27	\$1,056.86	\$148.51	\$127.00	(\$29.15)
BALANCING CONGESTION	(\$6,896.76)	(\$2,335.93)	(\$1,592.89)	\$547.14	\$12,917.62	\$626.42	\$440.79
FINANCIAL IMPACT CHARGE	\$0.00	\$0.00	\$0.00	(\$0.13)	\$0.00	\$0.00	\$0.00
	28	29	30	31			
DAM ENERGY	\$0.01	\$0.00	\$0.00	(\$0.01)			
DAM LOSSES	\$0.00	\$0.00	\$0.01	\$0.00			
BALANCING ENERGY	(\$415.01)	\$436.74	\$22.65	(\$69.59)			
BALANCING LOSSES	\$178.27	\$226.93	\$241.09	\$689.51			
BALANCING CONGESTION	(\$337.33)	(\$695.15)	\$9,311.53	\$2,284.79			
FINANCIAL IMPACT CHARGE	\$0.00	\$0.00	\$0.00	\$0.00			



SETTLEMENTS REPORT
January 2019 Settlement Adjustment
June 7, 2019

Settlement Adjustment – Market Costs Delta Analysis

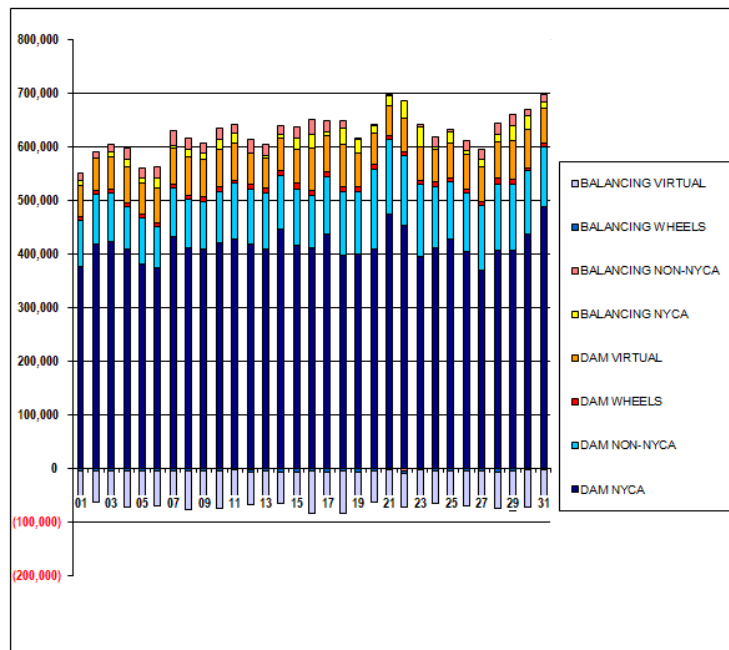
	MONDAY	TUESDAY	WEDNESDAY	THURSDAY	FRIDAY	SATURDAY	SUNDAY
		1	2	3	4	5	6
ENERGY		(\$2,845.55)	\$2,050.81	\$7.95	(\$3,878.62)	(\$3,651.21)	(\$3,606.93)
TRANSMISSION SERVICE		(\$801.04)	(\$572.36)	(\$574.01)	(\$606.06)	(\$687.44)	(\$732.50)
UPLIFT		(\$0.01)	\$0.05	(\$0.01)	\$0.01	\$0.01	(\$0.01)
RESIDUALS		(\$630.67)	(\$646.18)	(\$2,487.42)	(\$507.32)	(\$257.54)	(\$918.26)
ANCILLARY SERVICES		(\$3,936.30)	(\$1,313.38)	(\$1,854.75)	(\$2,818.82)	(\$1,966.11)	(\$2,538.14)
TCC		(\$258.48)	(\$53.59)	\$167.59	\$865.91	\$49.11	\$110.80
	7	8	9	10	11	12	13
ENERGY	(\$2,022.16)	(\$4,472.63)	\$2,861.87	\$607.16	(\$5,141.44)	(\$12,419.65)	(\$7,134.77)
TRANSMISSION SERVICE	(\$658.07)	(\$525.34)	(\$365.51)	(\$494.20)	(\$658.07)	(\$761.98)	(\$686.49)
UPLIFT	\$0.01	\$0.01	\$1,908.99	\$309.89	(\$0.10)	\$0.00	\$0.00
RESIDUALS	\$785.26	(\$476.93)	(\$563.77)	(\$2,995.50)	(\$3,426.14)	(\$220.91)	\$275.46
ANCILLARY SERVICES	(\$2,259.64)	(\$2,390.81)	(\$1,995.65)	(\$3,953.66)	(\$3,093.18)	(\$880.96)	(\$1,032.92)
TCC	\$337.10	\$644.37	\$675.69	\$2,057.56	(\$2,118.08)	(\$3,751.49)	(\$2,009.00)
	14	15	16	17	18	19	20
ENERGY	(\$3,281.08)	(\$2,497.94)	(\$7,819.72)	(\$16,978.76)	(\$12,374.55)	\$9,694.63	(\$699.02)
TRANSMISSION SERVICE	(\$575.26)	(\$569.51)	(\$540.15)	(\$708.11)	(\$765.55)	(\$623.34)	(\$650.87)
UPLIFT	(\$0.02)	(\$0.01)	\$0.01	\$0.02	\$0.00	\$177,203.75	\$0.01
RESIDUALS	\$196.10	(\$1,040.01)	(\$2,105.85)	(\$77.27)	(\$1,198.57)	(\$6,580.37)	(\$2,799.55)
ANCILLARY SERVICES	(\$1,271.20)	(\$1,997.35)	(\$3,899.81)	(\$1,884.72)	(\$4,411.00)	(\$542.04)	(\$228.87)
TCC	(\$276.34)	\$348.71	\$1,281.55	\$180.05	\$1,471.22	(\$4,755.43)	(\$7,279.65)
	21	22	23	24	25	26	27
ENERGY	\$75.09	(\$1,593.96)	(\$1,808.32)	(\$7,189.86)	(\$14,049.72)	(\$3,121.74)	(\$3,008.21)
TRANSMISSION SERVICE	(\$667.50)	(\$666.21)	(\$578.23)	(\$540.50)	(\$444.12)	(\$579.37)	(\$553.44)
UPLIFT	(\$0.07)	\$0.00	\$0.01	\$0.00	\$6,923.04	\$0.00	\$0.00
RESIDUALS	(\$6,659.10)	(\$2,345.83)	(\$1,343.13)	\$7,119.58	\$13,054.61	\$753.22	\$418.07
ANCILLARY SERVICES	(\$476.38)	(\$8,832.05)	(\$2,644.79)	(\$1,915.15)	(\$1,665.73)	(\$2,173.20)	(\$2,127.56)
TCC	(\$6,454.48)	\$2,329.10	(\$3,941.16)	\$123.19	\$138.23	\$88.30	\$93.14
	28	29	30	31			
ENERGY	(\$5,918.53)	\$600.59	(\$10,158.79)	(\$3,632.85)			
TRANSMISSION SERVICE	(\$715.51)	(\$494.88)	(\$628.06)	(\$714.54)			
UPLIFT	\$0.01	(\$0.02)	\$713.72	\$23,506.52			
RESIDUALS	(\$574.06)	(\$31.48)	\$9,575.28	\$2,904.70			
ANCILLARY SERVICES	(\$1,667.51)	(\$2,276.30)	\$29,557.98	(\$2,227.49)			
TCC	\$45.45	\$466.48	(\$66,564.06)	(\$2,298.92)			



SETTLEMENTS REPORT
January 2019 Settlement Adjustment
June 7, 2019

Initial Settlement – Market Supply Analysis

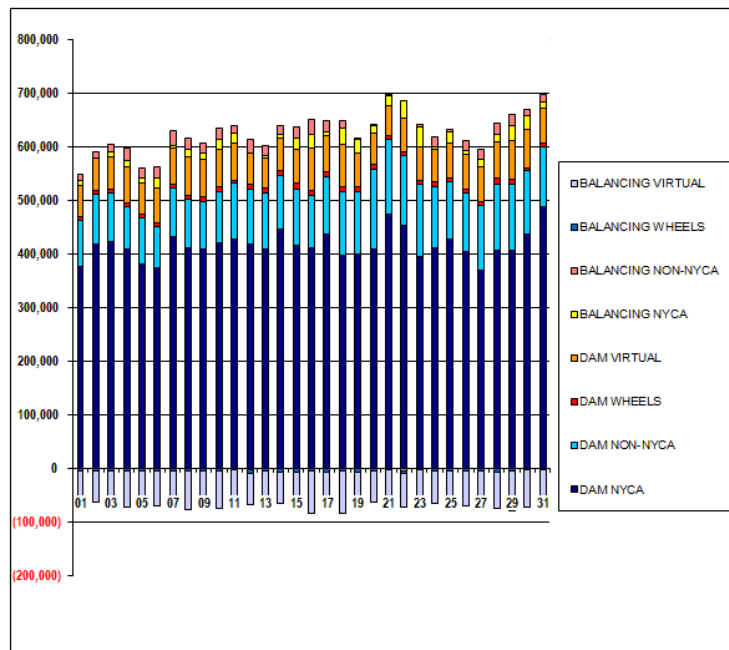
	MONDAY	TUESDAY	WEDNESDAY	THURSDAY	FRIDAY	SATURDAY	SUNDAY
		1	2	3	4	5	6
DAM NYCA		377,093	418,762	422,755	409,581	380,916	374,785
DAM NON-NYCA		86,349	92,874	90,750	78,330	86,393	76,309
DAM WHEELS		7,777	8,785	8,521	8,072	8,036	8,435
DAM VIRTUAL		57,953	58,307	60,549	67,540	57,303	64,476
BALANCING NYCA		9,225	402	9,076	12,938	9,870	18,829
BALANCING NON-NYCA		12,512	11,903	14,445	21,971	18,261	21,464
BALANCING WHEELS		(4,176)	(5,185)	(4,881)	(4,472)	(4,436)	(4,835)
BALANCING VIRTUAL		(57,953)	(58,307)	(60,549)	(67,540)	(57,303)	(64,476)
	7	8	9	10	11	12	13
DAM NYCA	432,466	413,130	409,709	422,385	427,536	419,222	410,692
DAM NON-NYCA	91,310	89,079	88,479	95,540	106,144	102,132	104,265
DAM WHEELS	8,220	8,126	8,848	9,058	4,779	8,790	9,206
DAM VIRTUAL	66,839	72,284	69,964	68,194	70,279	59,585	55,145
BALANCING NYCA	3,958	13,868	11,349	19,931	17,858	(2,735)	4,825
BALANCING NON-NYCA	27,396	19,865	19,725	19,572	14,977	26,087	20,224
BALANCING WHEELS	(4,620)	(4,526)	(5,248)	(5,458)	(1,179)	(5,190)	(5,808)
BALANCING VIRTUAL	(66,839)	(72,284)	(69,964)	(68,194)	(70,279)	(59,585)	(55,145)
	14	15	16	17	18	19	20
DAM NYCA	446,955	416,504	411,097	438,203	398,766	399,522	410,967
DAM NON-NYCA	100,209	105,584	99,553	106,394	119,118	117,801	148,748
DAM WHEELS	10,461	10,589	8,472	9,655	8,328	9,186	8,391
DAM VIRTUAL	58,916	62,977	78,916	67,691	78,834	62,435	58,735
BALANCING NYCA	6,772	21,438	26,542	6,635	30,057	25,079	12,947
BALANCING NON-NYCA	16,956	21,381	28,568	21,938	14,377	2,195	3,584
BALANCING WHEELS	(6,861)	(6,989)	(4,392)	(6,065)	(4,248)	(6,303)	(4,941)
BALANCING VIRTUAL	(58,916)	(62,977)	(78,916)	(67,691)	(78,834)	(62,435)	(58,735)
	21	22	23	24	25	26	27
DAM NYCA	475,403	453,776	396,158	411,473	427,762	404,688	369,920
DAM NON-NYCA	138,846	129,645	135,212	115,601	107,100	108,799	120,881
DAM WHEELS	6,751	7,651	7,201	8,969	8,596	9,086	8,705
DAM VIRTUAL	54,586	63,609	61,525	59,378	65,449	64,756	63,351
BALANCING NYCA	19,543	32,470	38,202	6,364	19,008	5,881	13,754
BALANCING NON-NYCA	1,146	(4,493)	3,836	17,318	6,495	20,367	20,147
BALANCING WHEELS	(3,021)	(4,051)	(3,121)	(4,889)	(4,516)	(5,006)	(4,625)
BALANCING VIRTUAL	(54,586)	(63,609)	(61,525)	(59,378)	(65,449)	(64,756)	(63,351)
	28	29	30	31			
DAM NYCA	407,973	406,697	438,922	490,084			
DAM NON-NYCA	123,528	123,857	116,536	111,155			
DAM WHEELS	10,029	8,737	6,223	6,483			
DAM VIRTUAL	68,998	74,319	70,700	65,274			
BALANCING NYCA	14,394	27,846	25,919	10,549			
BALANCING NON-NYCA	19,860	20,289	12,619	15,762			
BALANCING WHEELS	(5,899)	(4,657)	(1,802)	(2,578)			
BALANCING VIRTUAL	(68,998)	(74,319)	(70,700)	(65,274)			



SETTLEMENTS REPORT
January 2019 Settlement Adjustment
June 7, 2019

4-Month Settlement Adjustment – Market Supply Analysis

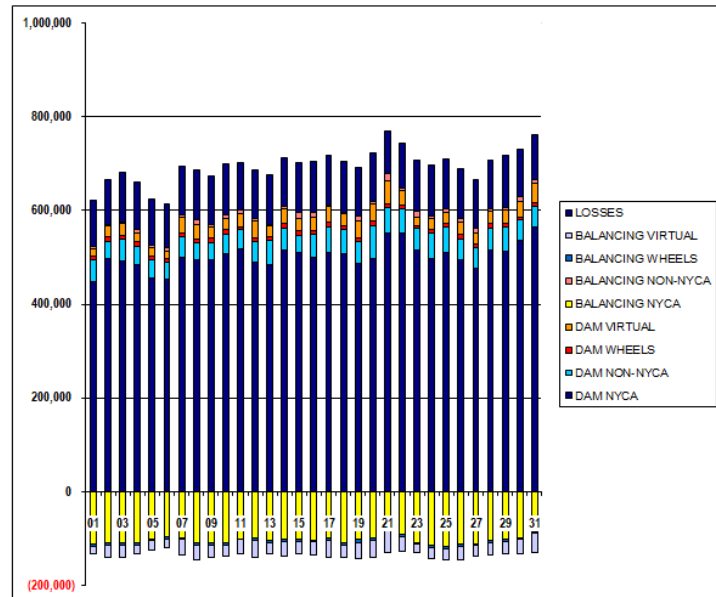
	MONDAY	TUESDAY	WEDNESDAY	THURSDAY	FRIDAY	SATURDAY	SUNDAY
		1	2	3	4	5	6
DAM NYCA		377,093	418,762	422,755	409,581	380,916	374,785
DAM NON-NYCA		86,349	92,874	90,750	78,330	86,393	76,309
DAM WHEELS		7,777	8,785	8,521	8,072	8,036	8,435
DAM VIRTUAL		57,953	58,307	60,549	67,540	57,303	64,476
BALANCING NYCA		8,900	453	8,995	12,798	9,698	18,649
BALANCING NON-NYCA		12,512	11,903	14,445	21,971	18,261	21,464
BALANCING WHEELS		(4,176)	(5,185)	(4,881)	(4,472)	(4,436)	(4,835)
BALANCING VIRTUAL		(57,953)	(58,307)	(60,549)	(67,540)	(57,303)	(64,476)
	7	8	9	10	11	12	13
DAM NYCA	432,466	413,130	409,709	422,385	427,536	419,222	410,892
DAM NON-NYCA	91,310	89,079	88,479	95,540	106,144	102,132	104,265
DAM WHEELS	8,220	8,126	8,848	9,058	4,779	8,790	9,206
DAM VIRTUAL	66,839	72,284	69,964	68,194	70,279	59,585	55,145
BALANCING NYCA	3,921	13,703	11,427	19,865	17,666	(3,073)	4,610
BALANCING NON-NYCA	27,396	19,865	19,725	19,572	14,977	26,087	20,224
BALANCING WHEELS	(4,620)	(4,526)	(5,248)	(5,458)	(1,179)	(5,190)	(5,806)
BALANCING VIRTUAL	(66,839)	(72,284)	(69,964)	(68,194)	(70,279)	(59,585)	(55,145)
	14	15	16	17	18	19	20
DAM NYCA	446,955	416,504	411,097	438,203	398,766	399,522	410,967
DAM NON-NYCA	100,209	105,584	99,553	106,394	119,118	117,801	148,748
DAM WHEELS	10,461	10,589	8,472	9,665	8,328	9,186	8,391
DAM VIRTUAL	58,916	62,977	78,916	67,691	78,834	62,435	58,735
BALANCING NYCA	6,703	21,362	26,330	6,273	29,777	25,098	12,880
BALANCING NON-NYCA	16,956	21,381	28,568	21,938	14,377	2,195	3,594
BALANCING WHEELS	(6,861)	(6,989)	(4,392)	(6,065)	(4,248)	(6,303)	(4,941)
BALANCING VIRTUAL	(58,916)	(62,977)	(78,916)	(67,691)	(78,834)	(62,435)	(58,735)
	21	22	23	24	25	26	27
DAM NYCA	475,403	453,776	396,158	411,473	427,762	404,688	369,920
DAM NON-NYCA	139,846	129,645	135,212	115,601	107,100	108,799	120,881
DAM WHEELS	6,751	7,651	7,201	8,969	8,596	9,086	8,705
DAM VIRTUAL	54,586	63,609	61,525	59,378	65,449	64,756	63,351
BALANCING NYCA	19,477	32,471	38,133	6,370	18,944	5,612	13,690
BALANCING NON-NYCA	1,146	(4,493)	3,836	17,318	6,495	20,367	20,147
BALANCING WHEELS	(3,021)	(4,051)	(3,121)	(4,889)	(4,516)	(5,006)	(4,625)
BALANCING VIRTUAL	(54,586)	(63,609)	(61,525)	(59,378)	(65,449)	(64,756)	(63,351)
	28	29	30	31			
DAM NYCA	407,973	406,697	438,922	490,084			
DAM NON-NYCA	123,528	123,857	116,536	111,155			
DAM WHEELS	10,029	8,737	6,223	6,483			
DAM VIRTUAL	68,998	74,319	70,700	65,274			
BALANCING NYCA	14,235	27,860	25,945	10,558			
BALANCING NON-NYCA	19,860	20,289	12,619	15,762			
BALANCING WHEELS	(5,899)	(4,657)	(1,802)	(2,578)			
BALANCING VIRTUAL	(68,998)	(74,319)	(70,700)	(65,274)			



SETTLEMENTS REPORT
January 2019 Settlement Adjustment
June 7, 2019

Initial Settlement – Market Withdrawals Analysis

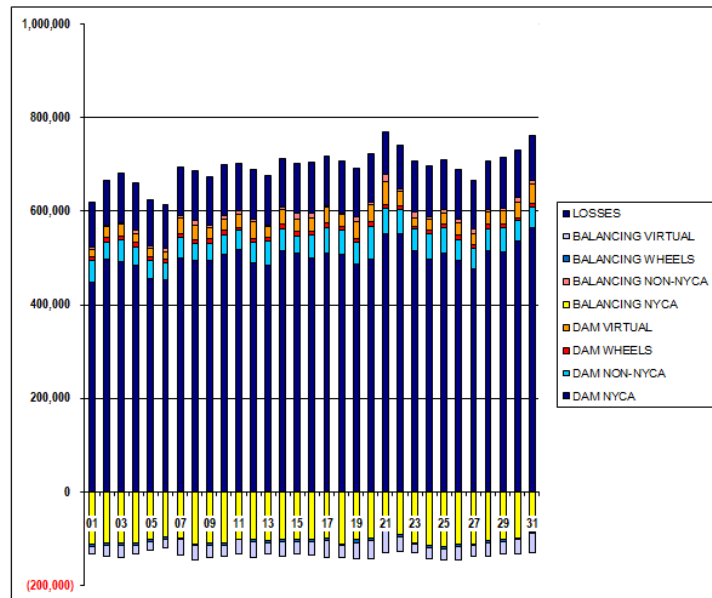
	MONDAY	TUESDAY	WEDNESDAY	THURSDAY	FRIDAY	SATURDAY	SUNDAY
		1	2	3	4	5	6
DAM NYCA		448,315	496,217	491,348	485,112	454,678	453,253
DAM NON-NYCA		47,417	38,284	47,005	39,109	40,304	35,262
DAM WHEELS		7,777	8,785	8,521	8,072	8,036	8,435
DAM VIRTUAL		15,477	24,237	24,322	19,364	18,795	16,582
BALANCING NYCA		(112,060)	(110,073)	(110,400)	(109,722)	(101,230)	(97,543)
BALANCING NON-NYCA		3,574	2,275	4,723	6,621	2,786	5,965
BALANCING WHEELS		(4,176)	(5,185)	(4,881)	(4,472)	(4,436)	(4,835)
BALANCING VIRTUAL		(15,477)	(24,237)	(24,322)	(19,364)	(18,795)	(16,582)
UFE/LOSSES		97,933	97,238	104,349	101,700	98,902	94,448
	7	8	9	10	11	12	13
DAM NYCA	499,887	493,405	493,559	508,355	517,980	489,577	485,173
DAM NON-NYCA	44,910	37,988	37,683	41,450	41,064	44,273	50,071
DAM WHEELS	8,220	8,128	8,848	9,059	4,779	8,790	9,206
DAM VIRTUAL	33,681	31,049	24,365	23,529	30,331	33,981	22,590
BALANCING NYCA	(98,265)	(110,777)	(110,826)	(108,487)	(100,962)	(100,402)	(104,284)
BALANCING NON-NYCA	3,678	9,809	6,723	9,087	5,652	5,673	2,768
BALANCING WHEELS	(4,620)	(4,526)	(5,248)	(5,458)	(1,179)	(5,190)	(5,606)
BALANCING VIRTUAL	(33,681)	(31,049)	(24,365)	(23,529)	(30,331)	(33,981)	(22,590)
UFE/LOSSES	104,929	105,537	102,123	107,022	102,781	105,585	106,279
	14	15	16	17	18	19	20
DAM NYCA	516,215	509,940	500,005	508,155	506,625	487,051	496,328
DAM NON-NYCA	45,623	37,136	49,277	56,055	52,592	45,366	72,123
DAM WHEELS	10,461	10,589	8,472	9,665	8,328	9,186	8,391
DAM VIRTUAL	30,953	24,706	28,537	35,141	24,884	34,873	37,128
BALANCING NYCA	(100,643)	(100,925)	(103,186)	(98,784)	(110,512)	(102,841)	(99,971)
BALANCING NON-NYCA	5,401	13,868	9,743	1,593	4,527	11,747	5,467
BALANCING WHEELS	(6,861)	(6,809)	(4,392)	(6,065)	(4,248)	(6,303)	(4,941)
BALANCING VIRTUAL	(30,953)	(24,706)	(28,537)	(35,141)	(24,884)	(34,873)	(37,128)
UFE/LOSSES	104,297	104,888	109,921	105,152	109,085	103,274	102,309
	21	22	23	24	25	26	27
DAM NYCA	552,869	550,441	515,982	497,005	509,559	493,564	476,892
DAM NON-NYCA	53,435	52,051	45,248	54,041	54,266	45,747	43,886
DAM WHEELS	6,751	7,651	7,201	8,969	8,596	9,086	8,705
DAM VIRTUAL	49,867	31,109	17,884	22,761	23,300	26,644	22,102
BALANCING NYCA	(76,289)	(92,251)	(108,381)	(114,925)	(118,564)	(113,331)	(111,205)
BALANCING NON-NYCA	16,605	6,724	11,054	4,228	6,823	7,236	9,314
BALANCING WHEELS	(3,021)	(4,051)	(3,121)	(4,889)	(4,516)	(5,006)	(4,625)
BALANCING VIRTUAL	(49,867)	(31,109)	(17,884)	(22,761)	(23,300)	(26,644)	(22,102)
UFE/LOSSES	89,318	94,434	109,505	110,408	108,281	106,519	105,814
	28	29	30	31			
DAM NYCA	514,522	511,912	536,180	565,314			
DAM NON-NYCA	46,840	52,109	44,085	44,317			
DAM WHEELS	10,029	8,737	6,223	6,483			
DAM VIRTUAL	26,879	27,615	32,679	42,803			
BALANCING NYCA	(103,731)	(101,424)	(98,925)	(85,075)			
BALANCING NON-NYCA	5,898	6,194	11,309	6,533			
BALANCING WHEELS	(5,899)	(4,657)	(1,802)	(2,578)			
BALANCING VIRTUAL	(26,879)	(27,615)	(32,679)	(42,803)			
UFE/LOSSES	102,225	109,898	101,347	96,461			



SETTLEMENTS REPORT
January 2019 Settlement Adjustment
June 7, 2019

4-Month Settlement Adjustment – Market Withdrawals Analysis

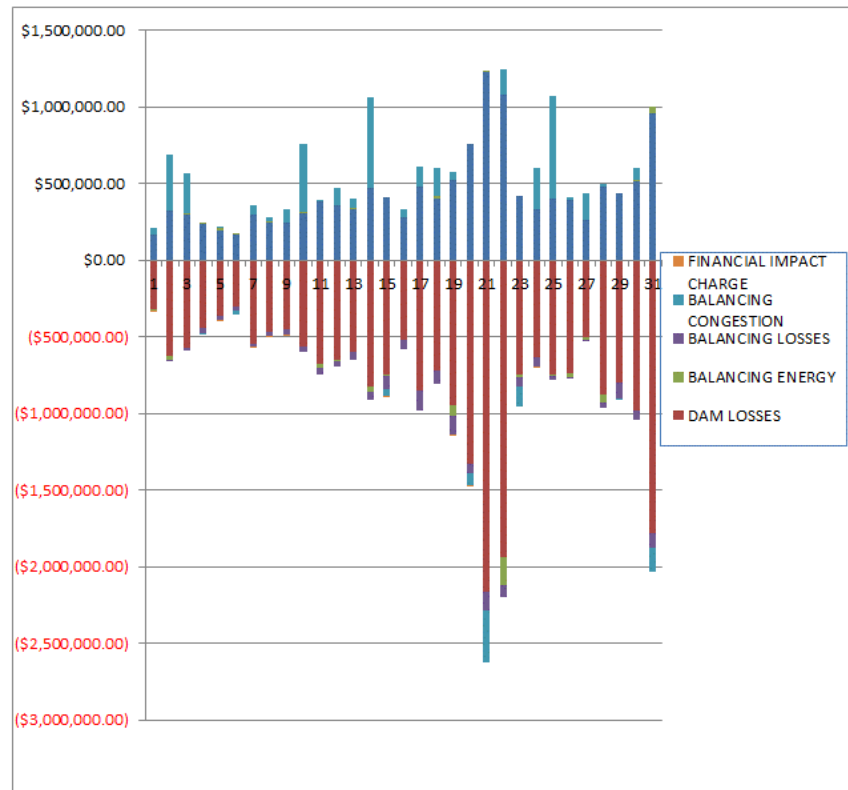
	MONDAY	TUESDAY	WEDNESDAY	THURSDAY	FRIDAY	SATURDAY	SUNDAY
		1	2	3	4	5	6
DAM NYCA		448,315	496,217	491,348	485,112	454,678	453,253
DAM NON-NYCA		47,417	38,284	47,005	39,109	40,304	35,262
DAM WHEELS		7,777	8,785	8,521	6,072	8,036	8,435
DAM VIRTUAL		15,477	24,237	24,322	19,384	18,795	16,582
BALANCING NYCA		(112,279)	(110,042)	(110,697)	(110,028)	(101,526)	(97,727)
BALANCING NON-NYCA		3,574	2,275	4,723	6,621	2,786	5,965
BALANCING WHEELS		(4,176)	(5,185)	(4,881)	(4,472)	(4,436)	(4,835)
BALANCING VIRTUAL		(15,477)	(24,237)	(24,322)	(19,384)	(18,795)	(16,582)
UFE/LOSSES		97,827	97,259	104,566	101,867	99,026	94,454
	7	8	9	10	11	12	13
DAM NYCA	499,887	493,405	493,559	508,355	517,980	489,577	485,173
DAM NON-NYCA	44,910	37,988	37,683	41,450	41,064	44,273	50,071
DAM WHEELS	8,220	8,126	8,848	9,059	4,779	8,790	9,206
DAM VIRTUAL	33,681	31,049	24,365	23,529	30,331	33,981	22,590
BALANCING NYCA	(98,416)	(110,986)	(110,555)	(108,420)	(101,182)	(100,770)	(104,570)
BALANCING NON-NYCA	3,678	9,809	6,723	9,087	5,652	5,673	2,768
BALANCING WHEELS	(4,620)	(4,526)	(5,248)	(5,458)	(1,179)	(5,190)	(5,606)
BALANCING VIRTUAL	(33,681)	(31,049)	(24,365)	(23,529)	(30,331)	(33,981)	(22,590)
UFE/LOSSES	105,033	105,561	101,929	106,889	102,809	105,615	106,348
	14	15	16	17	18	19	20
DAM NYCA	516,215	509,940	500,005	509,155	506,625	487,051	496,328
DAM NON-NYCA	45,623	37,136	49,277	56,055	52,592	45,366	72,123
DAM WHEELS	10,461	10,589	8,472	9,665	8,328	9,186	8,391
DAM VIRTUAL	30,953	24,706	28,537	35,141	24,884	34,873	37,128
BALANCING NYCA	(100,729)	(101,137)	(103,001)	(98,970)	(110,989)	(102,803)	(100,043)
BALANCING NON-NYCA	5,401	13,868	9,743	1,593	4,527	11,747	5,467
BALANCING WHEELS	(6,861)	(6,809)	(4,392)	(6,055)	(4,248)	(8,303)	(4,941)
BALANCING VIRTUAL	(30,953)	(24,706)	(28,537)	(35,141)	(24,884)	(34,873)	(37,128)
UFE/LOSSES	104,313	105,025	109,525	104,975	109,283	103,255	102,315
	21	22	23	24	25	26	27
DAM NYCA	552,869	550,441	515,982	497,005	509,559	493,564	476,892
DAM NON-NYCA	53,435	52,051	45,248	54,041	54,266	45,747	43,886
DAM WHEELS	6,751	7,651	7,201	8,969	8,596	9,086	8,705
DAM VIRTUAL	49,867	31,109	17,884	22,761	23,300	26,644	22,102
BALANCING NYCA	(76,330)	(92,133)	(108,667)	(114,763)	(118,430)	(113,416)	(111,068)
BALANCING NON-NYCA	16,605	6,724	11,054	4,228	6,823	7,236	9,314
BALANCING WHEELS	(3,021)	(4,051)	(3,121)	(4,889)	(4,516)	(5,006)	(4,625)
BALANCING VIRTUAL	(49,867)	(31,109)	(17,884)	(22,761)	(23,300)	(26,644)	(22,102)
UFE/LOSSES	89,294	94,317	109,721	110,251	108,083	106,534	105,613
	28	29	30	31			
DAM NYCA	514,522	511,912	536,180	565,314			
DAM NON-NYCA	46,840	52,109	44,085	44,317			
DAM WHEELS	10,029	8,737	6,223	6,483			
DAM VIRTUAL	26,879	27,615	32,679	42,803			
BALANCING NYCA	(104,313)	(101,328)	(98,896)	(85,256)			
BALANCING NON-NYCA	5,898	6,194	11,309	6,533			
BALANCING WHEELS	(5,898)	(4,657)	(1,802)	(2,578)			
BALANCING VIRTUAL	(26,879)	(27,615)	(32,679)	(42,803)			
UFE/LOSSES	102,648	109,835	101,344	96,652			



SETTLEMENTS REPORT
January 2019 Settlement Adjustment
June 7, 2019

Initial Settlement – Market Residuals Analysis

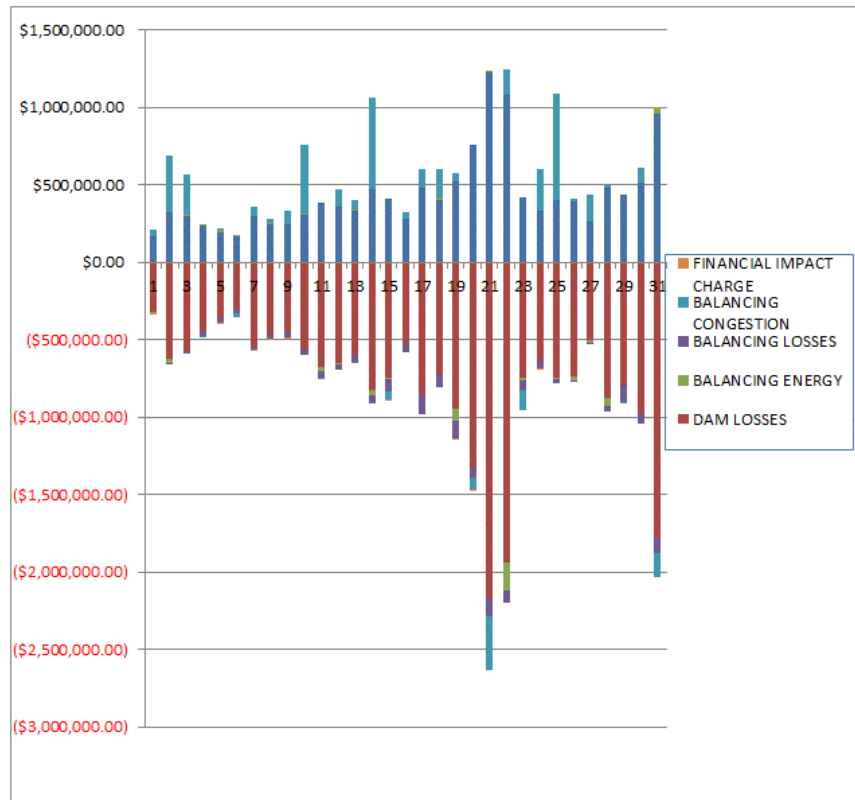
	MONDAY	TUESDAY	WEDNESDAY	THURSDAY	FRIDAY	SATURDAY	SUNDAY
		1	2	3	4	5	6
DAM ENERGY		\$170,020.00	\$323,694.83	\$294,681.46	\$237,341.70	\$194,121.35	\$163,265.53
DAM LOSSES		(\$323,279.73)	(\$620,764.59)	(\$570,586.58)	(\$442,427.50)	(\$365,822.19)	(\$306,946.49)
BALANCING ENERGY		(\$5,959.77)	(\$25,839.59)	\$10,164.72	\$6,618.23	\$17,291.45	\$7,923.46
BALANCING LOSSES		(\$1,542.41)	(\$6,027.71)	(\$23,296.44)	(\$31,837.66)	(\$24,634.79)	(\$18,281.27)
BALANCING CONGESTION		\$37,187.80	\$360,652.93	\$263,875.80	(\$12,668.17)	\$5,644.53	(\$26,915.38)
FINANCIAL IMPACT CHARGE		(\$277.40)	\$0.00	\$0.00	\$0.00	(\$591.60)	\$0.00
	7	8	9	10	11	12	13
DAM ENERGY	\$297,070.38	\$245,056.30	\$243,081.14	\$304,669.55	\$384,257.10	\$360,809.32	\$334,962.92
DAM LOSSES	(\$542,914.39)	(\$466,194.81)	(\$450,355.46)	(\$559,990.49)	(\$680,798.42)	(\$651,232.37)	(\$600,448.20)
BALANCING ENERGY	\$1,204.85	\$3,736.11	(\$4,397.25)	\$6,943.29	(\$23,653.89)	(\$10,057.66)	\$2,423.29
BALANCING LOSSES	(\$25,039.05)	(\$25,193.19)	(\$27,878.20)	(\$39,783.28)	(\$39,106.43)	(\$29,697.34)	(\$49,972.20)
BALANCING CONGESTION	\$61,766.88	\$33,299.65	\$89,360.73	\$444,213.14	\$2,249.18	\$113,629.64	\$60,290.11
FINANCIAL IMPACT CHARGE	(\$8.78)	(\$23.07)	(\$727.15)	\$0.00	\$0.00	\$0.00	\$0.00
	14	15	16	17	18	19	20
DAM ENERGY	\$466,108.48	\$407,837.47	\$278,910.59	\$475,077.76	\$397,348.44	\$519,444.96	\$752,863.17
DAM LOSSES	(\$822,240.13)	(\$746,820.24)	(\$518,582.99)	(\$848,254.75)	(\$724,119.28)	(\$945,114.27)	(\$1,326,634.79)
BALANCING ENERGY	(\$34,799.49)	(\$5,435.04)	\$3,811.77	(\$6,010.18)	\$24,765.40	(\$70,357.67)	(\$5,272.01)
BALANCING LOSSES	(\$56,267.21)	(\$85,549.98)	(\$64,767.14)	(\$127,525.93)	(\$81,449.36)	(\$118,694.35)	(\$61,353.33)
BALANCING CONGESTION	\$594,335.55	(\$45,494.98)	\$45,609.58	\$130,123.24	\$177,237.87	\$52,401.64	(\$70,426.18)
FINANCIAL IMPACT CHARGE	\$0.00	(\$8,052.05)	\$0.00	\$0.00	\$0.00	(\$31.90)	(\$269.71)
	21	22	23	24	25	26	27
DAM ENERGY	\$1,222,837.64	\$1,078,848.84	\$416,437.73	\$327,702.60	\$397,588.99	\$395,189.00	\$263,413.93
DAM LOSSES	(\$2,159,598.73)	(\$1,938,725.04)	(\$743,919.06)	(\$630,803.03)	(\$750,566.65)	(\$738,832.57)	(\$501,938.87)
BALANCING ENERGY	\$11,926.39	(\$182,443.84)	(\$17,883.02)	(\$3,698.15)	(\$7,796.76)	(\$23,678.33)	(\$14,472.03)
BALANCING LOSSES	(\$122,465.35)	(\$77,370.70)	(\$67,206.39)	(\$56,940.94)	(\$21,723.93)	(\$14,318.84)	(\$6,615.97)
BALANCING CONGESTION	(\$340,757.30)	\$168,848.08	(\$122,899.55)	\$270,506.58	\$674,675.20	\$17,753.23	\$175,621.23
FINANCIAL IMPACT CHARGE	\$0.00	\$0.00	\$0.00	(\$40.02)	\$0.00	\$0.00	\$0.00
	28	29	30	31			
DAM ENERGY	\$478,270.18	\$435,669.04	\$512,686.96	\$953,145.20			
DAM LOSSES	(\$879,000.56)	(\$796,838.64)	(\$983,213.55)	(\$1,779,167.11)			
BALANCING ENERGY	(\$46,430.35)	(\$2,249.22)	\$5,808.17	\$47,344.61			
BALANCING LOSSES	(\$34,333.69)	(\$105,299.00)	(\$57,068.51)	(\$96,268.00)			
BALANCING CONGESTION	\$14,937.69	(\$8,170.15)	\$83,769.41	(\$156,709.60)			
FINANCIAL IMPACT CHARGE	\$0.00	\$0.00	\$0.00	\$0.00			



SETTLEMENTS REPORT
January 2019 Settlement Adjustment
June 7, 2019

4-Month Settlement Adjustment – Market Residuals Analysis

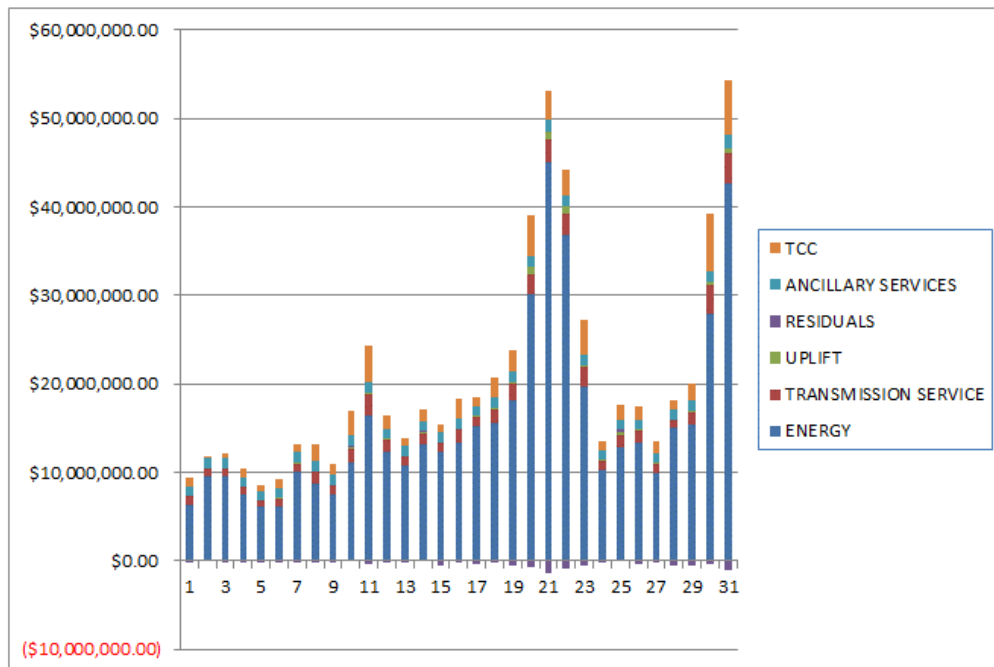
	MONDAY	TUESDAY	WEDNESDAY	THURSDAY	FRIDAY	SATURDAY	SUNDAY
		1	2	3	4	5	6
DAM ENERGY		\$170,020.00	\$323,694.83	\$294,681.45	\$237,341.70	\$194,121.34	\$163,265.53
DAM LOSSES		(\$323,279.73)	(\$620,764.59)	(\$570,586.58)	(\$442,427.50)	(\$365,822.19)	(\$306,946.49)
BALANCING ENERGY		(\$5,961.71)	(\$25,853.24)	\$10,164.09	\$6,547.85	\$17,304.55	\$7,923.52
BALANCING LOSSES		(\$1,706.81)	(\$6,089.97)	(\$23,405.64)	(\$31,918.11)	(\$24,717.66)	(\$18,437.69)
BALANCING CONGESTION		\$36,723.21	\$360,082.66	\$261,498.22	(\$13,024.66)	\$5,456.67	(\$27,677.28)
FINANCIAL IMPACT CHARGE		(\$277.14)	\$0.00	\$0.00	\$0.00	(\$591.50)	\$0.00
	7	8	9	10	11	12	13
DAM ENERGY	\$297,070.38	\$245,056.30	\$243,081.13	\$304,669.56	\$384,257.10	\$360,809.32	\$334,962.92
DAM LOSSES	(\$542,914.38)	(\$466,194.80)	(\$450,355.46)	(\$559,990.49)	(\$680,798.42)	(\$651,232.37)	(\$600,448.21)
BALANCING ENERGY	\$1,197.70	\$3,737.16	(\$4,472.41)	\$6,938.34	(\$23,383.64)	(\$9,726.37)	\$2,651.47
BALANCING LOSSES	(\$25,040.27)	(\$25,308.87)	(\$27,833.02)	(\$39,878.72)	(\$39,169.11)	(\$29,934.20)	(\$49,967.39)
BALANCING CONGESTION	\$62,560.53	\$32,937.42	\$88,826.88	\$441,318.02	(\$1,384.53)	\$113,314.30	\$60,332.59
FINANCIAL IMPACT CHARGE	(\$8.81)	(\$23.15)	(\$727.08)	\$0.00	\$0.00	\$0.00	\$0.00
	14	15	16	17	18	19	20
DAM ENERGY	\$466,108.48	\$407,837.47	\$278,910.58	\$475,077.76	\$397,348.45	\$519,444.96	\$752,863.18
DAM LOSSES	(\$822,240.13)	(\$746,820.24)	(\$518,582.99)	(\$848,254.75)	(\$724,119.28)	(\$945,114.27)	(\$1,326,634.79)
BALANCING ENERGY	(\$34,799.57)	(\$5,408.38)	\$3,805.21	(\$5,972.19)	\$24,751.18	(\$76,192.09)	(\$5,272.55)
BALANCING LOSSES	(\$56,006.68)	(\$85,500.26)	(\$64,919.98)	(\$127,425.05)	(\$81,403.67)	(\$119,181.91)	(\$61,413.83)
BALANCING CONGESTION	\$594,271.20	(\$46,611.42)	\$43,663.14	\$129,907.10	\$176,007.82	\$52,143.30	(\$73,164.71)
FINANCIAL IMPACT CHARGE	\$0.00	(\$8,052.00)	\$0.00	\$0.00	\$0.00	(\$31.95)	(\$269.70)
	21	22	23	24	25	26	27
DAM ENERGY	\$1,222,837.64	\$1,078,848.84	\$416,437.73	\$327,702.60	\$397,588.99	\$395,169.00	\$263,413.93
DAM LOSSES	(\$2,159,598.73)	(\$1,938,725.04)	(\$743,919.05)	(\$630,803.04)	(\$750,566.64)	(\$738,832.57)	(\$501,938.87)
BALANCING ENERGY	\$11,984.30	(\$182,594.84)	(\$17,814.54)	\$1,817.57	(\$7,808.29)	(\$23,678.53)	(\$14,465.60)
BALANCING LOSSES	(\$122,295.60)	(\$77,229.60)	(\$67,025.12)	(\$55,884.08)	(\$21,575.42)	(\$14,191.84)	(\$6,845.12)
BALANCING CONGESTION	(\$347,644.06)	\$166,512.15	(\$124,492.44)	\$271,053.72	\$687,592.82	\$18,379.65	\$176,062.02
FINANCIAL IMPACT CHARGE	\$0.00	\$0.00	\$0.00	(\$40.15)	\$0.00	\$0.00	\$0.00
	28	29	30	31			
DAM ENERGY	\$478,270.19	\$435,669.04	\$512,686.96	\$953,145.19			
DAM LOSSES	(\$879,000.56)	(\$796,838.64)	(\$983,213.54)	(\$1,779,167.11)			
BALANCING ENERGY	(\$46,845.36)	(\$1,812.48)	\$5,830.82	\$47,275.02			
BALANCING LOSSES	(\$34,155.42)	(\$105,072.07)	(\$56,847.42)	(\$95,578.49)			
BALANCING CONGESTION	\$14,600.36	(\$9,865.30)	\$93,080.84	(\$154,424.81)			
FINANCIAL IMPACT CHARGE	\$0.00	\$0.00	\$0.00	\$0.00			



SETTLEMENTS REPORT
January 2019 Settlement Adjustment
June 7, 2019

Initial Settlement – Market Costs Analysis

	MONDAY	TUESDAY	WEDNESDAY	THURSDAY	FRIDAY	SATURDAY	SUNDAY
		1	2	3	4	5	6
ENERGY		\$6,388,362.16	\$9,593,588.90	\$9,546,837.28	\$7,534,358.88	\$6,155,571.43	\$6,208,549.19
TRANSMISSION SERVICE		\$879,729.57	\$751,495.15	\$828,547.88	\$814,289.63	\$697,117.42	\$837,053.84
UPLIFT		\$62,831.98	\$85,134.63	\$89,247.45	\$47,135.25	\$48,523.13	\$62,875.21
RESIDUALS		(\$123,851.51)	\$31,715.87	(\$25,161.04)	(\$242,973.40)	(\$173,991.25)	(\$180,954.15)
ANCILLARY SERVICES		\$993,784.80	\$1,107,823.91	\$1,116,621.00	\$1,067,830.64	\$1,007,900.33	\$1,138,897.26
TCC		\$1,044,199.46	\$291,679.18	\$598,365.47	\$916,565.86	\$575,318.07	\$951,913.56
	7	8	9	10	11	12	13
ENERGY	\$10,089,588.71	\$8,711,975.80	\$7,537,978.60	\$11,100,389.02	\$16,465,547.44	\$12,320,830.97	\$10,783,594.17
TRANSMISSION SERVICE	\$915,460.57	\$1,302,572.76	\$967,507.13	\$1,580,567.02	\$2,388,164.67	\$1,347,276.74	\$1,010,834.19
UPLIFT	\$83,622.00	\$41,295.76	\$115,814.47	\$187,551.67	\$120,863.67	\$133,303.69	\$64,899.42
RESIDUALS	(\$207,920.11)	(\$209,319.01)	(\$150,916.19)	\$156,052.21	(\$357,052.46)	(\$216,548.41)	(\$252,744.08)
ANCILLARY SERVICES	\$1,166,984.13	\$1,189,455.91	\$1,045,460.22	\$1,106,412.23	\$1,150,961.42	\$1,053,020.19	\$1,063,517.12
TCC	\$882,594.93	\$1,971,087.56	\$1,320,448.57	\$2,753,940.74	\$4,208,669.39	\$1,603,772.67	\$989,310.33
	14	15	16	17	18	19	20
ENERGY	\$13,169,467.11	\$12,330,970.68	\$13,423,212.79	\$15,267,379.43	\$15,544,317.85	\$18,105,484.05	\$30,088,182.47
TRANSMISSION SERVICE	\$1,206,297.73	\$946,714.06	\$1,454,583.50	\$1,026,983.63	\$1,541,363.35	\$1,847,729.09	\$2,339,723.21
UPLIFT	\$141,171.66	\$107,296.05	\$90,303.95	\$78,747.41	\$231,524.83	\$191,916.38	\$786,628.44
RESIDUALS	\$147,137.20	(\$483,514.82)	(\$255,018.19)	(\$376,589.86)	(\$206,216.93)	(\$562,351.59)	(\$711,092.85)
ANCILLARY SERVICES	\$1,149,718.66	\$1,151,614.84	\$1,139,379.84	\$1,096,187.43	\$1,202,014.32	\$1,249,593.44	\$1,232,514.08
TCC	\$1,285,154.18	\$837,472.87	\$2,180,581.01	\$962,509.64	\$2,253,895.78	\$2,320,642.31	\$4,539,257.54
	21	22	23	24	25	26	27
ENERGY	\$45,033,119.54	\$36,866,285.53	\$19,615,699.32	\$10,289,967.41	\$12,893,268.47	\$13,413,622.76	\$9,874,010.67
TRANSMISSION SERVICE	\$2,565,587.67	\$2,391,075.36	\$2,342,982.77	\$987,531.24	\$1,353,263.94	\$1,303,444.59	\$1,125,651.25
UPLIFT	\$884,341.11	\$761,062.73	\$151,212.98	\$127,872.35	\$270,900.41	\$173,059.46	\$54,468.47
RESIDUALS	(\$1,388,057.35)	(\$950,842.66)	(\$535,470.29)	(\$93,272.96)	\$292,176.85	(\$363,887.51)	(\$83,991.71)
ANCILLARY SERVICES	\$1,390,314.96	\$1,274,110.21	\$1,237,362.87	\$1,087,689.98	\$1,114,634.40	\$1,092,600.20	\$1,127,067.32
TCC	\$3,238,658.43	\$2,969,185.24	\$3,826,753.89	\$1,072,489.86	\$1,687,247.33	\$1,549,687.52	\$1,326,617.03
	28	29	30	31			
ENERGY	\$14,996,422.64	\$15,468,106.68	\$27,862,599.89	\$42,630,553.89			
TRANSMISSION SERVICE	\$953,363.86	\$1,377,278.39	\$3,321,973.56	\$3,522,285.98			
UPLIFT	\$30,579.14	\$149,415.78	\$310,289.65	\$499,707.52			
RESIDUALS	(\$466,556.73)	(\$476,887.97)	(\$438,037.52)	(\$1,031,654.90)			
ANCILLARY SERVICES	\$1,205,672.24	\$1,139,205.20	\$1,296,670.44	\$1,489,278.00			
TCC	\$972,823.52	\$1,947,641.13	\$6,429,272.37	\$6,238,564.57			



SETTLEMENTS REPORT
January 2019 Settlement Adjustment
June 7, 2019

4-Month Settlement Adjustment – Market Costs Analysis

	MONDAY	TUESDAY	WEDNESDAY	THURSDAY	FRIDAY	SATURDAY	SUNDAY
		1	2	3	4	5	6
ENERGY		\$6,385,516.61	\$9,595,639.71	\$9,546,845.23	\$7,530,480.26	\$6,151,920.22	\$6,204,942.26
TRANSMISSION SERVICE		\$878,928.53	\$750,922.79	\$827,973.87	\$813,683.57	\$696,429.98	\$836,321.34
UPLIFT		\$62,831.97	\$85,134.68	\$89,247.44	\$47,135.26	\$48,523.14	\$62,875.20
RESIDUALS		(\$124,482.18)	\$31,069.69	(\$27,648.46)	(\$243,480.72)	(\$174,248.79)	(\$181,872.41)
ANCILLARY SERVICES		\$989,848.50	\$1,106,510.53	\$1,114,766.25	\$1,065,011.82	\$1,005,934.22	\$1,136,359.12
TCC		\$1,043,940.98	\$291,625.59	\$598,533.06	\$917,431.77	\$575,367.18	\$952,024.36
	7	8	9	10	11	12	13
ENERGY	\$10,087,566.55	\$8,707,503.17	\$7,540,840.47	\$11,100,996.18	\$16,480,406.00	\$12,308,411.32	\$10,776,459.40
TRANSMISSION SERVICE	\$914,802.50	\$1,302,047.42	\$967,141.62	\$1,580,072.82	\$2,387,506.60	\$1,346,514.76	\$1,010,147.70
UPLIFT	\$83,622.01	\$41,295.77	\$117,723.46	\$187,861.56	\$120,863.57	\$133,303.69	\$64,899.41
RESIDUALS	(\$207,134.85)	(\$209,795.94)	(\$151,479.96)	\$153,056.71	(\$360,478.60)	(\$216,769.32)	(\$252,468.62)
ANCILLARY SERVICES	\$1,164,724.49	\$1,187,065.10	\$1,043,464.57	\$1,102,458.55	\$1,147,868.24	\$1,052,139.23	\$1,062,484.20
TCC	\$882,932.03	\$1,971,731.93	\$1,321,124.26	\$2,755,998.30	\$4,206,551.31	\$1,600,021.18	\$987,301.33
	14	15	16	17	18	19	20
ENERGY	\$13,166,186.03	\$12,328,472.74	\$13,415,393.07	\$15,250,400.67	\$15,531,943.30	\$18,115,178.68	\$30,087,483.45
TRANSMISSION SERVICE	\$1,205,722.47	\$946,144.55	\$1,454,043.35	\$1,026,275.52	\$1,540,597.80	\$1,847,105.75	\$2,339,072.34
UPLIFT	\$141,171.64	\$107,296.04	\$90,303.96	\$78,747.43	\$231,524.83	\$369,120.13	\$786,628.45
RESIDUALS	\$147,333.30	(\$484,554.83)	(\$257,124.04)	(\$376,667.13)	(\$207,415.50)	(\$568,931.96)	(\$713,892.40)
ANCILLARY SERVICES	\$1,148,447.46	\$1,149,617.49	\$1,135,480.03	\$1,094,302.71	\$1,197,603.32	\$1,249,051.40	\$1,232,285.21
TCC	\$1,284,877.84	\$837,821.58	\$2,181,862.56	\$962,689.69	\$2,255,367.00	\$2,315,886.88	\$4,531,977.89
	21	22	23	24	25	26	27
ENERGY	\$45,033,194.63	\$36,864,691.57	\$19,613,891.00	\$10,282,777.55	\$12,879,218.75	\$13,410,501.02	\$9,871,002.46
TRANSMISSION SERVICE	\$2,564,920.17	\$2,390,409.15	\$2,342,404.54	\$986,990.74	\$1,352,819.82	\$1,302,865.22	\$1,125,097.81
UPLIFT	\$884,341.04	\$761,062.73	\$151,212.99	\$127,872.35	\$277,823.45	\$173,059.46	\$54,468.47
RESIDUALS	(\$1,394,716.45)	(\$953,188.49)	(\$536,813.42)	(\$86,153.38)	\$305,231.46	(\$363,134.29)	(\$83,573.64)
ANCILLARY SERVICES	\$1,389,838.58	\$1,265,278.16	\$1,234,718.08	\$1,085,774.83	\$1,112,968.67	\$1,090,427.00	\$1,124,939.76
TCC	\$3,232,203.95	\$2,971,514.34	\$3,822,812.73	\$1,072,613.05	\$1,687,385.56	\$1,549,775.82	\$1,326,710.17
	28	29	30	31			
ENERGY	\$14,990,504.11	\$15,468,707.27	\$27,852,441.10	\$42,626,921.04			
TRANSMISSION SERVICE	\$952,648.35	\$1,376,783.51	\$3,321,345.50	\$3,521,571.44			
UPLIFT	\$30,579.15	\$149,415.76	\$311,003.37	\$523,214.04			
RESIDUALS	(\$467,130.79)	(\$476,919.45)	(\$428,462.24)	(\$1,028,750.20)			
ANCILLARY SERVICES	\$1,204,004.73	\$1,136,928.90	\$1,326,228.42	\$1,487,050.51			
TCC	\$972,868.97	\$1,948,107.61	\$6,362,708.31	\$6,236,265.65			

