



# Class Year/Interconnection Queue Redesign

---

Thinh Nguyen

Senior Manager, Interconnection Projects

**Joint ESPWG/TPAS/ICAP WG**

August 20, 2019

DRAFT – FOR DISCUSSION PURPOSES ONLY



# Agenda

- **Background**
- **Meeting Objective**
- **NYISO's Proposals**
  - Deliverability Redesign
  - Class Year Study Efficiencies
- **Tariff Language**
- **Next Steps**

Red text denotes areas of substantive changes/additions from August 6, 2019

DRAFT – FOR DISCUSSION PURPOSES ONLY



# Background

Date	Working Group	Discussion Points
03-06-19	Transmission Planning Advisory Subcommittee (TPAS)	Class Year Study: Lessons Learned and Discussion Regarding Potential Process Improvements/Redesign
04-01-19	TPAS	Class Year/Interconnection Queue Redesign Discussion <ul style="list-style-type: none"> <li>• Potential Areas for Improvement</li> <li>• Ideas for Process Improvements/Redesign</li> </ul>
05-03-19	Joint TPAS/Installed Capacity Working Group (ICAP WG)	Class Year/Interconnection Queue Redesign <ul style="list-style-type: none"> <li>• Feedback on Ideas for Process Improvements Discussed 4/1/2019</li> <li>• NYISO's Preliminary Proposals</li> </ul>
06-10-19 07-08-19 08-06-19	Joint TPAS/ESPWG/ ICAP WG	Class Year/Interconnection Queue Redesign <ul style="list-style-type: none"> <li>• Detailed Proposals for Deliverability Redesign and Class Year Study Efficiencies</li> </ul>

DRAFT – FOR DISCUSSION PURPOSES ONLY



# Meeting Objective

- Discuss feedback, further vet proposals **and review proposed tariff revisions**
- Ensure that proposals address the following key areas for improvement identified by stakeholders:
  - Need to expedite the interconnection study process overall, particularly Class Year Study
  - Limit the possibility for unique issues related to a single or few projects to cause delays to numerous other projects
- **Maintain qualities of current process most important to stakeholders:**
  - Identification of SUFs for projects to reliably interconnect, including detailed design, engineering and construction estimates
  - Binding, good faith cost estimates that provide reasonable closure on upgrade costs
  - Equitable allocation of upgrade costs

DRAFT – FOR DISCUSSION PURPOSES ONLY



# NYISO's Proposals

DRAFT – FOR DISCUSSION PURPOSES ONLY

© COPYRIGHT NYISO 2019. ALL RIGHTS RESERVED.



# NYISO's Proposals

## I. Deliverability Redesign

- A. Require Deliverability Evaluation in SRIS
- B. Remove Additional SDU Studies from Class Year Study
- C. Mini Deliverability Study for CRIS-Only Projects
- D. CRIS Expiration Rules\*

## II. Class Year Clarifications/Efficiencies

- A. Frontload Class Year Study Work into Part 1 Studies
- B. Eliminate Duplication in SRIS and Class Year
- C. Require **Class Year Agreements, Deposits and** Project Data Earlier in Class Year Process
- D. Revise and Clarify Regulatory Milestones **and Treatment of Deposits**
- E. Revise Definition of Class Year Transmission Project

\*Being discussed separately with ICAP WG

DRAFT - FOR DISCUSSION PURPOSES ONLY



# Deliverability Redesign

DRAFT – FOR DISCUSSION PURPOSES ONLY

© COPYRIGHT NYISO 2019. ALL RIGHTS RESERVED.

# Deliverability Redesign

## A. Require Deliverability Evaluation in the SRIS

### Overview

- For all Large Facilities, require a deliverability evaluation in the project's SRIS
  - If the need for any SDU is identified in the SRIS, the SRIS will identify potential SDUs at a high level and provide preliminary SDU cost estimates
  - These high-level SDU designs and cost estimates can be further evaluated in the Class Year Part 1 Studies for the individual project

DRAFT – FOR DISCUSSION PURPOSES ONLY





# Deliverability Redesign

## A. Require Deliverability Evaluation in the SRIS Overview (continued)

- If the SDUs are not “new” SDUs (*i.e.*, ~~not~~ evaluated previously or substantially similar to SDUs studied previously and, therefore), don’t require additional detailed studies):
  - The SDUs and cost estimates can be refined in the Part 1 Class Year Study (without the need for additional detailed SDU studies)

# Deliverability Redesign

## A. Require Deliverability Evaluation in the SRIS

### Overview (continued)

- For “new” SDUs (neither evaluated previously nor substantially similar to SDUs studied previously):
  - With high-level information from the SRIS, NYISO can also include this “new” SDU in the individual project’s Part 1 study in the Class Year, and provide refined cost estimates in the Class Year (~~without requiring~~ potentially eliminating the need for an additional SDU study)

# Deliverability Redesign

## A. Require Deliverability Evaluation in the SRIS

### Overview (continued)

- For “new” SDUs (neither evaluated previously nor substantially similar to SDUs studied previously) (continued):
  - If additional SDU studies are needed or, if a larger or alternative SDU is required due to the collective impact of multiple Class Year projects, the NYISO will notify the Class Year projects as soon as such SDU is identified and provide them with the election to move forward. Upon such election, the SDUs and cost estimates will need to be refined in an additional SDU study performed in parallel with the Class Year Study (See Proposal I(B))

DRAFT – FOR DISCUSSION PURPOSES ONLY



# Deliverability Redesign

## A. Require Deliverability Evaluation in the SRIS

### Benefits of this Proposal

- Potential to shorten the duration of Class Year Studies because deliverability evaluations in the SRIS provide information that can be used in the Class Year Study
- May allow Developers to consider changes to projects that might make the project more deliverable
- Not expected to prolong the SRIS in light of a related proposal – Proposal II(B) – to narrow the scope of other SRIS analyses

DRAFT – FOR DISCUSSION PURPOSES ONLY



# Deliverability Redesign

## A. Require Deliverability Evaluation in the SRIS (continued)

### Details

- Scope of the SRIS deliverability analysis
  - For projects proposing to interconnect in areas of ~~known~~ potential deliverability constraints, the SRIS will include a full deliverability analysis
  - ~~– For other projects, the SRIS will include a limited deliverability analysis (e.g., only byways, only applicable Highways/Other Interfaces, etc.)~~
  - The deliverability analysis requirement will be documented in the SRIS scope reviewed and approved by TPAS and the OC
  - The need and scope for a deliverability analysis will be identified in the SRIS scoping meeting and documented in the Operating Committee-approved scope

# Deliverability Redesign

## A. Require Deliverability Evaluation in the SRIS (continued)

### Details (continued)

- SRIS deliverability analysis will be a preliminary, nonbinding evaluation of deliverability, including identification of conceptual potential SDUs to address indicated deliverability issues
- Deliverability evaluation in the SRIS will:
  - State the assumptions upon which it is based
  - State the results of the preliminary analyses
  - Identify potential SDUs at a high level
  - Provide preliminary SDU cost estimates



DRAFT – FOR DISCUSSION PURPOSES ONLY



# Deliverability Redesign

## A. Require Deliverability Evaluation in the SRIS (continued)

### Details (continued)

- Developers would be responsible for the additional study costs related to the deliverability evaluation studied as part of the SRIS
  - NYISO would not require an additional \$30,000 deposit toward the cost of evaluation because the scope of the other analyses in the SRIS is being narrowed pursuant to a complementary proposal under “Class Year Study Efficiencies” (See Proposal II(B))
- Projects not requesting CRIS would be exempt from this requirement, but would be foreclosed from requesting CRIS in the Class Year Study

DRAFT – FOR DISCUSSION PURPOSES ONLY



# Deliverability Redesign

## A. Require Deliverability Evaluation in the SRIS (continued)

### Details (continued)

- Transition rule for projects in the queue
  - Applicable to all projects that do not have an OC-approved SRIS scope within 30 days after the effective date of the tariff revisions
  - If a project's SRIS scope is approved by the OC before FERC issues an order or within 30 days after an order, the scope would not be revised to include this deliverability requirement
  - If, however, a project's SRIS scope is not yet approved by the OC within 30 days after a FERC order:
    - Scope would be revised to include this deliverability evaluation if the NYISO determines such an evaluation is required
    - Revised scope would proceed to the next TPAS/OC

DRAFT – FOR DISCUSSION PURPOSES ONLY





# Deliverability Redesign

## A. Require Deliverability Evaluation in the SRIS (continued)

### Tariff Revisions

- See proposed tariff revisions attached to the meeting materials:
  - OATT § 25.7.7.1
  - OATT § 30.4.4.2
  - OATT § 30.7.2.1
  - OATT § 30.7.3
  - New OATT § 30.7.3.1
  - New OATT § 30.7.3.2
  - OATT § 30.7.4
  - OATT § 30.8.3
  - OATT § 30.14, Appx 1 & Att 1
  - OATT § 30.14 Appx 2

DRAFT - FOR DISCUSSION PURPOSES ONLY

# Deliverability Redesign

## B. Remove Additional SDU Studies from the Rest of the Class Year Study

### Overview

- Starting with Class Year 2019, remove additional SDU studies from the Class Year in lieu of the current bifurcation rules
- Background: Additional SDU studies are required for the following subset of SDUs:
  - SDU not previously identified and cost allocated in a Class Year Study and not substantially similar to a SDU previously identified and cost allocated in a Class Year Study

DRAFT – FOR DISCUSSION PURPOSES ONLY



# Deliverability Redesign

## B. Remove Additional SDU Study (continued)

### Overview (continued)

- Under this proposal, at the point in the Class Year Study when the need for additional SDU studies is identified:
  - If the project requiring such SDUs elects to proceed with cost allocation for those SDUs, the impacted Developers must pursue such studies outside the normal Class Year process
  - Allow rest of Class Year to proceed to decision and settlement and allow next Class Year to begin

DRAFT – FOR DISCUSSION PURPOSES ONLY



# Deliverability Redesign

## B. Remove Additional SDU Study (continued)

### Benefits of this Proposal

- Potential to shorten duration of Class Year Studies and expedite commencement of next Class Year Study (allowing for more frequent Class Year Studies)
- Will apply to Class Year 2019
  - ~~If FERC order~~ NYISO anticipates that a FERC order will predate the point at which projects must elect to proceed with additional SDU studies, this proposal will apply to Class Year 2019
    - NYISO anticipates that an early estimate for this point in the Class Year will be May 2020
    - FERC order is expected by end of February 2020, before this point in the Class Year 2019 schedule

DRAFT - FOR DISCUSSION PURPOSES ONLY



# Deliverability Redesign

## B. Remove Additional SDU Study (continued)

### Details

- Point in Class Year when this separation will occur:
  - Currently NYISO issues a formal Notice of SDUs Requiring Additional Studies after OC-approval of the Class Year Study
  - Starting with Class Year 2019, NYISO proposes to provide such notice earlier in the Class Year process
    - Rather than waiting until OC-approval, NYISO proposes to provide this notice as soon as the NYISO has identified the need for an SDU that would require additional SDU studies

DRAFT – FOR DISCUSSION PURPOSES ONLY



# Deliverability Redesign

## B. Remove Additional SDU Study (continued)

### Details

- Developer of project requiring an SDU that triggers additional SDU studies will be provided with a limited number of possible deliverability solutions reviewed at a high level
  - Developer **may** select one option to be analyzed in detail by the NYISO and CTO
  - Essential that CTOs timely provide NYISO with required data in order to identify potential solutions early in the Class Year Study

DRAFT – FOR DISCUSSION PURPOSES ONLY



# Deliverability Redesign

## B. Remove Additional SDU Study (continued)

### Details (continued)

- Decision Period for Projects Subject to Additional SDU Studies and Base Case implications for next Class Year
  - If additional SDU study is completed prior to completion of its Class Year, project completes decision round with its Class Year for both SUFs and SDUs
    - Project, its SUFs and its SDUs are all modeled in the base case for the next Class Year

# Deliverability Redesign

## B. Remove Additional SDU Study (continued)

### Details (continued)

- Decision Period for Projects Subject to Additional SDU Studies and Base Case implications for next Class Year (continued)
  - If additional SDU study is not completed at the time the project’s “original” Class Year settles, the project may, but is not required to, accept its SUF cost allocation in its original Class Year
    - Project may wish to do this in order that its Point of Interconnection is modeled in the next Class Year’s base case
    - Project can settle its SUFs and then continue with the ongoing additional SDU study
  - If project rejects SUFs project is treated same as projects that rejected SUF cost in their Class Year (*i.e.*, project is not modeled in the base case (ATBA) for the next Class Year)



# Deliverability Redesign

## B. Remove Additional SDU Study (continued)

### Details (continued)

- Decision Period for Projects Subject to Additional SDU Studies and Base Case implications for next Class Year (continued)
  - If additional SDU study is completed after completion of its Class Year, but before next Class Year’s ATBA lockdown date:
    - The “additional SDU project” has its own separate decision period
    - In that decision period, if the project did not accept its SUF cost allocation in the prior Class Year, then it would have to make decisions on both SUFs and SDUs
    - If SUFs not already accepted in the prior Class Year decision period, its SUF cost allocation for will be based on a post-Class Year base case (reflecting decisions from Class Year projects that settled prior to this decision period)
    - If project has already accepted or accepts its SUF cost allocation, it may accept or reject its SDU cost allocation

# Deliverability Redesign

## B. Remove Additional SDU Study (continued)

### Details (continued)

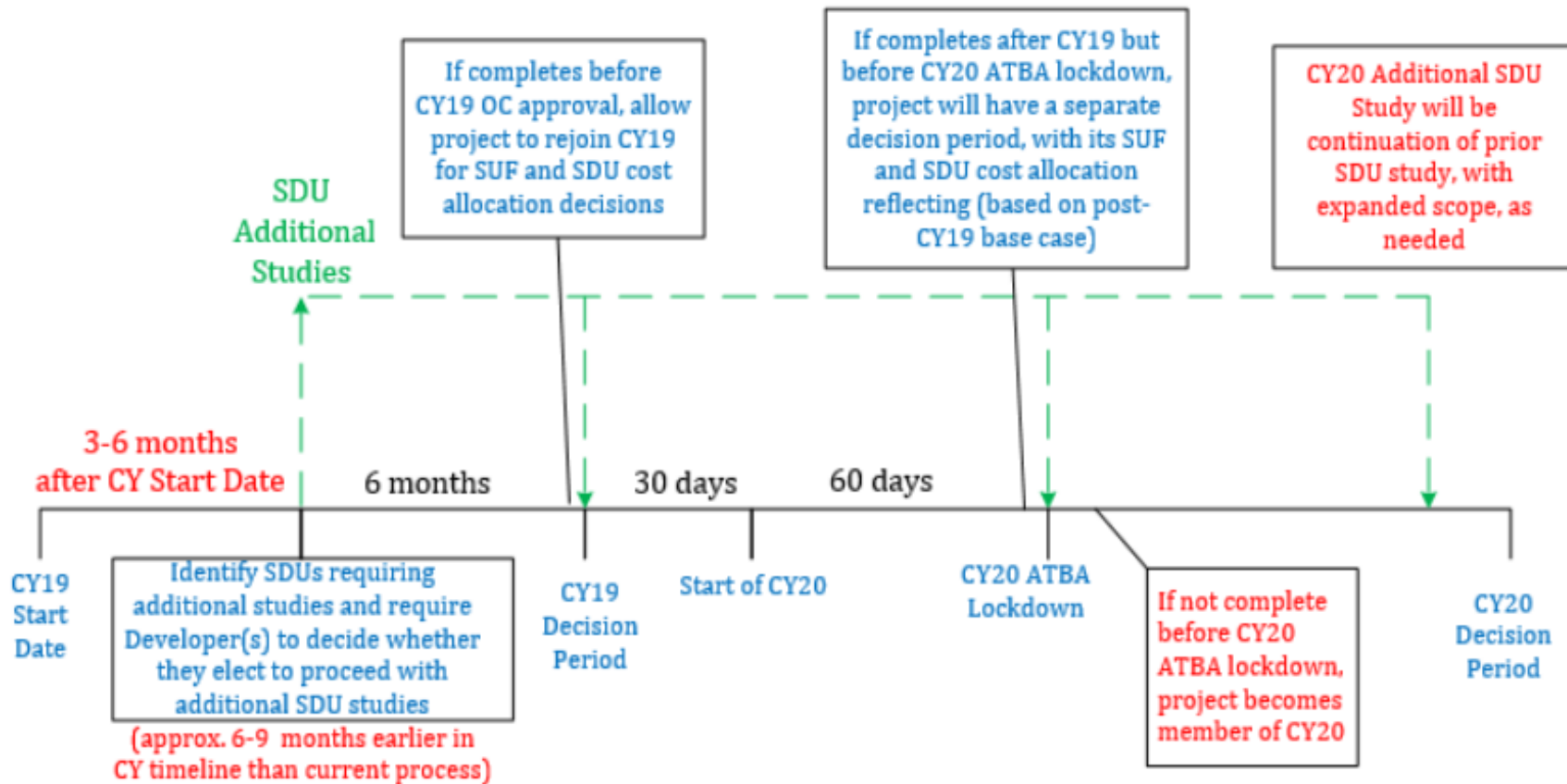
- Decision Period for Projects Subject to Additional SDU Studies and Base Case implications for next Class Year (continued)
  - If additional SDU study is not completed until after the ATBA lockdown of next Class Year:
    - Project's additional SDU study will continue in parallel with the next Class Year
    - Project will be included in the next Class Year base case (as a member of that Class Year)
    - Being part of that next Class Year will not counting as another Class Year strike (i.e., one of the project's two opportunities to enter a Class Year Study)

DRAFT – FOR DISCUSSION PURPOSES ONLY



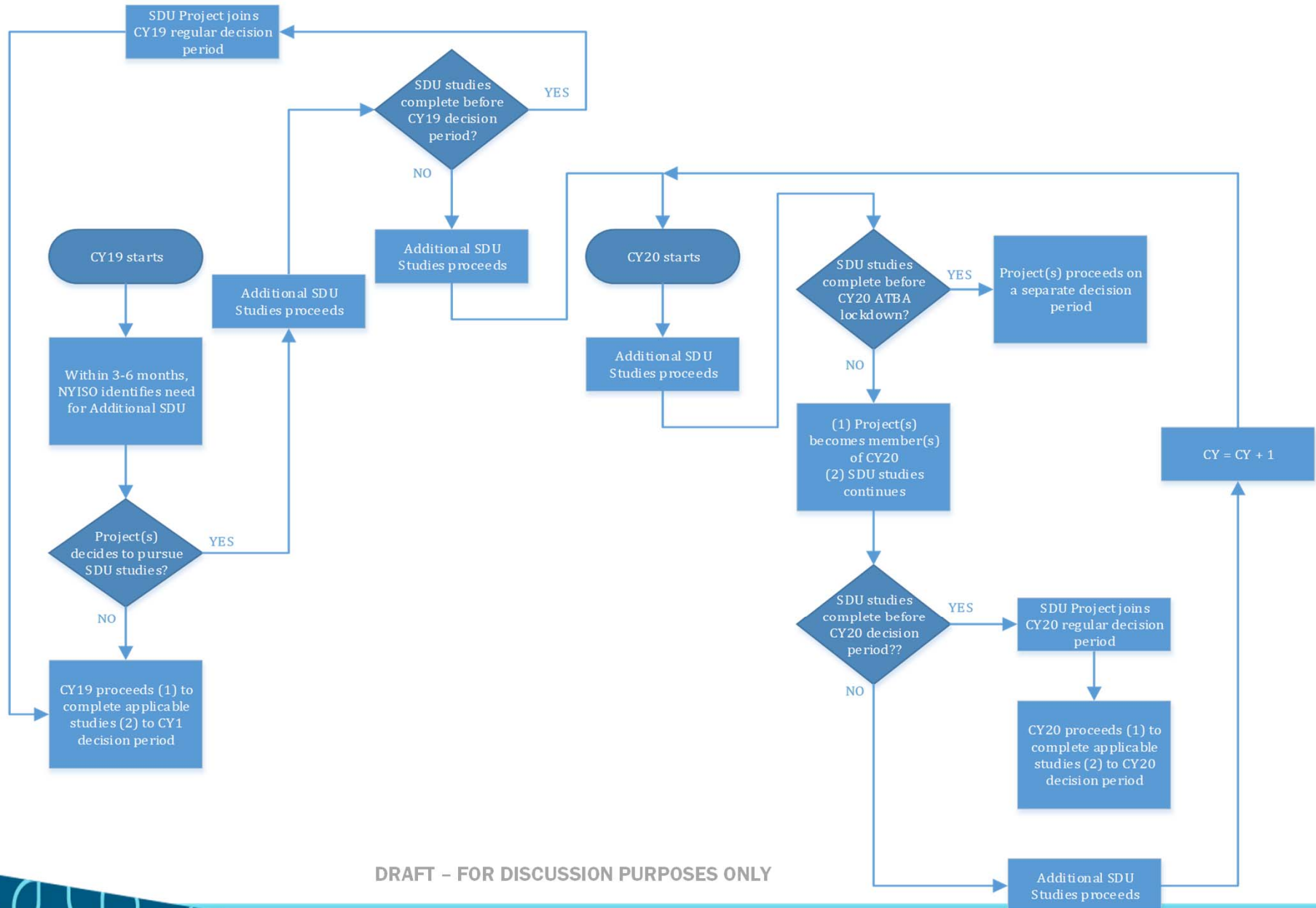
# Deliverability Redesign

## Anticipated CY Schedule (no changes to this slide)



DRAFT – FOR DISCUSSION PURPOSES ONLY

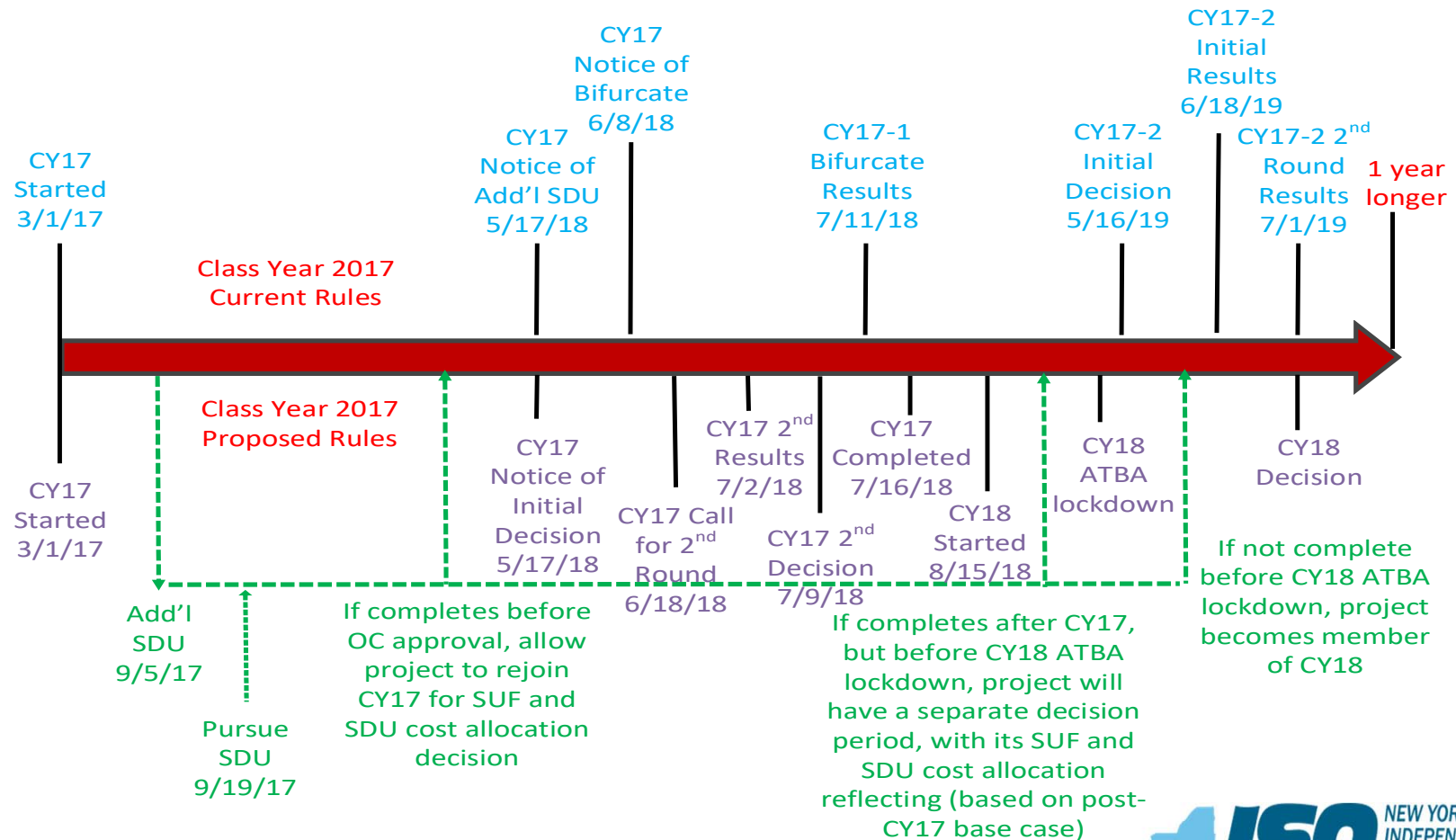
# CY Flowchart for Add'l SDU Studies



DRAFT – FOR DISCUSSION PURPOSES ONLY

# Deliverability Redesign

## Potential Impact on CY Schedule (no changes to this slide)



DRAFT - FOR DISCUSSION PURPOSES ONLY



# Deliverability Redesign

## B. Remove Additional SDU Study (continued)

### Details (continued)

- Cost allocation for the SDU if multiple projects contribute to the need for the SDU
  - If more than one project requires SDUs for which additional studies are required, the additional SDU study will study them collectively and cost allocation will be **among the projects requiring the SDU that triggered the additional SDU Study in the Class Year that is open at the time the additional SDU study is complete**
  - Projects can only proceed in separate additional SDU studies if they require different SDUs (e.g., one project in Long Island requiring an SDU and another project in NYC requiring a different SDU)

# Deliverability Redesign

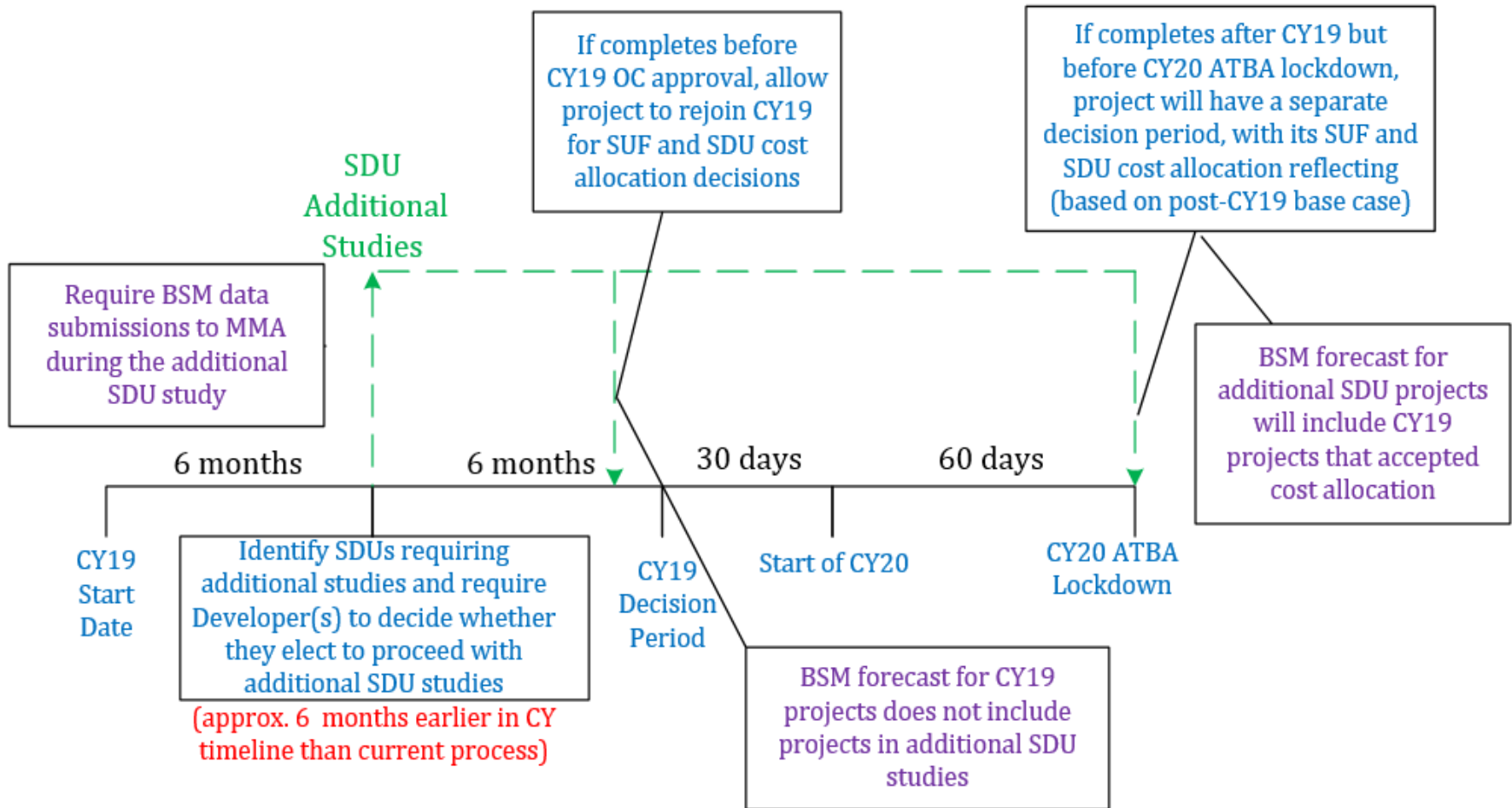
## B. Remove Additional SDU Study (continued)

### Details (continued)

- Impact on BSM evaluations
  - Separation of additional SDU studies from other projects requires enhancements to the forecast assumptions
  - If project electing to pursue additional SDU studies outside the Class Year Study process does not complete the additional SDU studies prior to completion of the Class Year:
    - It will not be included in the BSM forecast for projects remaining in the current Class Year
  - If project does complete the additional SDU studies prior to completion of the Class Year:
    - Project would be able to rejoin the Class Year with their cost allocated SDU and complete the Class Year decision and be subject to BSM rules similar to or the same as current rules
    - Project would be required to continue data submissions needed for BSM evaluations

# Deliverability Redesign

## BSM Schedule in Relation CY Schedule (no changes to this slide)





# Deliverability Redesign

## B. Remove Additional SDU Study (continued)

### Tariff Revisions

- See proposed tariff revisions attached to the meeting materials:
  - OATT § 25.1
  - OATT § 25.5.9
  - OATT § 25.5.10
  - OATT § 25.7.7
  - OATT § 25.8.2
  - OATT § 25.8.3
  - OATT § 25.8.4
  - OATT § 30.1
  - OATT § 30.7.3
  - OATT § 30.8.2
  - OATT § 30.14

# Deliverability Redesign

## C. Perform “Mini Deliverability Study” Outside the Class Year Process for CRIS-only projects

### Overview

- Perform “mini” deliverability analysis outside of Class Year for facilities seeking only CRIS:
  - All CRIS-only requests, regardless of requested MW level, including:
    - CRIS request for new facilities or existing facilities with no CRIS
    - Small generators (larger than 2 MW) subject to NYISO’s Small Generator Interconnection Procedures
    - Non-FERC jurisdictional facilities not subject to NYISO’s interconnection procedures
    - Increased CRIS requests (for facilities with existing CRIS)
- Only a determination of deliverable MW
- \$30,000 deposit and execution of a *pro forma* study agreement

DRAFT – FOR DISCUSSION PURPOSES ONLY



# Deliverability Redesign

## C. Mini Deliverability Study (continued)

### Benefits of this Proposal

- Expedited deliverability analysis
- Lower study deposit than Class Year CRIS-only evaluation

### Details (continued)

- ~~• CRIS-only requests eligible for this “mini” deliverability study will be limited to facilities that already have corresponding ERIS
  - ~~—Facilities going through uprates, for example, must have approved ERIS corresponding to the increased CRIS~~~~
- NYISO does not propose to cap the amount of CRIS that may be evaluated in the “mini” deliverability study
- NYISO does not propose to limit the eligible projects to those under a specified MW level

DRAFT – FOR DISCUSSION PURPOSES ONLY



# Deliverability Redesign

## C. Mini Deliverability Study (continued)

### Details (continued)

- Base Case Assumptions
  - Base case for the “mini” deliverability study will include CRIS requests for projects in current Class Year
  - Deliverability base cases will be “trued up” before commencement of next “mini” deliverability study or next Class Year Study, whichever occurs earlier
  - Base case for the “mini” deliverability study will be revised and deliverability reevaluated for potentially impacts projects if:
    - Pending Class Year completes during the “mini” deliverability study,
    - Class Year project rejects deliverability MW or SDUs, and
    - NYISO determines that the above may impact deliverability of a project in the mini study

DRAFT – FOR DISCUSSION PURPOSES ONLY



# Deliverability Redesign

## C. Mini Deliverability Study (continued)

### Details (continued)

- Process
  - The first “mini” deliverability study will commence on **March 25, 2020 (approximately 30 days after a FERC order)**
  - Mini deliverability studies will be performed as frequently as possible thereafter subject to the following:
    - “Mini” deliverability study cannot begin during the Class Year decision window (i.e., between posting of the Class Year Study to the OC and the commencement of the following CY)
    - **Parties to use Reasonable Efforts to complete the study within 4 months**

DRAFT – FOR DISCUSSION PURPOSES ONLY



# Deliverability Redesign

## C. Mini Deliverability Study (continued)

### Details (continued)

- Process
  - “Mini” deliverability study will begin the first Business Day after thirty (30) Calendar Days following the completion of the prior “mini” deliverability study
  - If the above date falls on a date within the pending Class Year decision and settlement period, the “mini” deliverability study Study will begin on the first Business Day after ten (10) Calendar Days following the completion of the Class Year Study
  - Entry requirements: Must request to enter by study start date and submit required deposit and technical data within 10 Calendar Days of tender of study agreement

DRAFT – FOR DISCUSSION PURPOSES ONLY



# Deliverability Redesign

## C. Mini Deliverability Study (continued)

### Details (continued)

- Process (continued)
  - No decision period upon completion of the “mini” deliverability study
  - Projects requesting CRIS through this study will be deemed to accept any deliverable MW
  - If project is not fully deliverable, project can accept its deliverable MWs, but for its full requested CRIS level, must proceed through a Class Year Study

DRAFT – FOR DISCUSSION PURPOSES ONLY



# Deliverability Redesign

## C. Mini Deliverability Study (continued)

### Details (continued)

- Required Enhancements to BSM Rules
  - The BSM evaluation for facilities being evaluated in the “mini” deliverability study will be performed in parallel with the “mini” deliverability study
  - This expedited BSM evaluation would evaluate facilities 2 MW or less as well (subject to FERC Order accepting NYISO’s Order No. 841 compliance revisions)
  - BSM Forecast Assumptions
    - Projects in ongoing Class Year will not be included in BSM forecast for projects in the “mini” deliverability study
    - Projects requesting CRIS in the “mini” deliverability study will have to have ERIS before requesting CRIS, and thus are more likely to go in-service prior to projects in the ongoing Class Year

DRAFT – FOR DISCUSSION PURPOSES ONLY





# Deliverability Redesign

## C. Mini Deliverability Study (continued)

### Details (continued)

- Required Enhancements to BSM Rules (continued)
  - Data required for BSM evaluations must be received and deemed complete prior to the “mini” deliverability start date
  - The starting capability year of the Mitigation Study Period for facilities being evaluated in the “mini” deliverability study will be the same as the starting capability year for Examined Facilities in the on-going Class Year
    - Currently, the starting Capability Period for all Examined Facilities is assumed to be 3 years from the start of the Class Year
    - The 2020 BSM Mitigation Study Period enhancement project will consider changes to the Starting Capability Period

# Deliverability Redesign

## C. Mini Deliverability Study (continued)

### Details (continued)

- Required Enhancements to BSM Rules (continued)
  - Facilities being evaluated in the “mini” deliverability study will be eligible to request a Competitive Entry Exemption or Renewable Exemption
    - Renewable Exemptions will limited to eligible “Exempt Renewable Technologies”, as identified by the NYISO each ICAP Demand Curve Reset filing year
      - Case specific analysis of facilities that are not an Exempt Renewable Technology will not be performed during a “mini” deliverability study
    - Renewable Exemptions in “mini” deliverability study will count towards the proposed 1,000 MW Class Year Cap
  - Facilities being evaluated in the “mini” deliverability study will not be eligible to request a Self-Supply Exemption



DRAFT – FOR DISCUSSION PURPOSES ONLY

# Deliverability Redesign

## C. Mini Deliverability Study (continued)

### Tariff Revisions

- See proposed tariff revisions attached to the meeting materials:
  - OATT § 25.1
  - OATT § 25.3.1
  - OATT § 25.5.2
  - OATT § 25.5.8
  - OATT § 25.5.9
  - OATT § 25.6
  - OATT § 25.7.1
  - OATT § 25.7.4
  - OATT § 25.7.7
  - OATT § 25.7.8
  - OATT § 25.7.9
  - OATT § 25.9.1
  - Att. S, 25 .11, Appx. 2 (new pro forma study agreement)

DRAFT – FOR DISCUSSION PURPOSES ONLY



# Class Year Study Efficiencies

DRAFT – FOR DISCUSSION PURPOSES ONLY

© COPYRIGHT NYISO 2019. ALL RIGHTS RESERVED.

# Class Year Study Efficiencies

## A. Frontload Class Year Study Work in Part 1 Studies

### Overview

- Evaluation of SUFs for projects on or near tie lines require additional time in the “Part 2” Class Year Study due to involvement of Affected Systems
- Starting with the Class Year 2019, frontload analyses to Part 1 Study
  - Evaluate non-local elective SUFs in Part 1 Studies
  - If a project’s SRIS identifies potential transfer analysis and/or non-local SUF for an external interface, require the Part 1 for this project to include the potential SUF

DRAFT – FOR DISCUSSION PURPOSES ONLY



# Class Year Study Efficiencies

## A. Frontload Part 1 Study Analyses (continued)

### Benefits of this Proposal

- Could shorten the duration of the Class Year
  - Part 1 Class Year Studies can leverage SRIS analysis
  - Affected Systems can be brought into the process earlier
- Starts required analyses earlier in the Class Year process
- Could expedite analyses required in iterative decision process
  - For example, an SUF identified to mitigate impacts of 5 projects may need to be resized, or an alternative identified, if only 2 of these projects accept their cost allocation
- Could provide “bookend” cost estimates earlier in the Class Year Process

DRAFT - FOR DISCUSSION PURPOSES ONLY



# Class Year Study Efficiencies

## A. Frontload Part 1 Study Analyses (continued)

### Details

- When performing Part 1 Class Year Studies, NYISO will leverage non-Local SUFs identified in SRIS
- NYISO will involve Affected Systems in the Part 1 Studies to commence their work earlier in the Class Year process
- Developer will be responsible for costs of evaluating non-Local SUF studies within the Part 1 Study
  - Currently, Developer is only allocated costs for Local SUF studies in the Part 1 analysis
  - For non-Local SUFs required by multiple projects, NYISO would divide the total study costs by the number of contributing projects

# Class Year Study Efficiencies

## A. Frontload Part 1 Study Analyses (continued)

### Details (continued)

- If alternative or larger non-Local SUFs are required as a result of the collective impact of Class Year projects identified in the Part 2 Study:
  - Analyses performed in Part 1 studies for the contributing projects can be utilized in the analysis of larger upgrades
  - Analyses performed in Part 1 studies will also be required for iterative decision rounds should all projects triggering the larger or alternative SUF reject their SUF cost allocation



# Class Year Study Efficiencies

## A. Frontload Part 1 Study Analyses (continued)

### Tariff Revisions

- This proposal does not require tariff revisions; it can be accomplished through scope of work to be performed as part of Part 1 Studies
- NYISO is already implementing this proposal in Class Year 2019 Part 1 Studies

DRAFT – FOR DISCUSSION PURPOSES ONLY



# Class Year Study Efficiencies

## B. Eliminate Duplication in SRIS and Class Year Studies

### Overview

- Starting with Class Year 2019, focus Class Year analysis on incremental "system and/or projects' interaction analysis"
- Eliminate above analysis from the SRIS stage when project is unlikely to require SUFs
- Class Year can leverage applicable SRIS analysis for Class Year project's individual system impact
- If there is a significant change in the vicinity of a Class Year project compared to that of the SRIS stage, apply engineering judgment to determine scope of local analysis

# Class Year Study Efficiencies

## B. Eliminate Duplication in SRIS and Class Year Studies (continued)

### Benefits of this Proposal

- Could shorten duration of Class Year Study
- Could expedite SRIS by avoiding detailed analyses in SRIS that are duplicated in the Class Year Study
- Can offset study time and costs for deliverability analysis in the SRIS

DRAFT – FOR DISCUSSION PURPOSES ONLY



# Class Year Study Efficiencies

## B. Eliminate Duplication in SRIS and Class Year Studies (continued)

### Details (continued)

- Specific analyses to be eliminated from Class Year Study, starting in Class Year 2019:
  - Resource Adequacy analysis (already covered in the RNA and CRP)
  - Following analyses from SRIS (**unless relevant project or system changes** or multiple projects in same area join the same Class Year):
    - Local thermal, voltage and stability analysis (N-0, N-1, N-1-1 if conducted in SRIS)

# Class Year Study Efficiencies

## B. Eliminate Duplication in SRIS and Class Year Studies (continued)

### Details (continued)

- Scope of SRIS
  - SRIS Specific analyses to be eliminated from scope of SRIS (e.g., transfer limit and N-1-1 analyses)
    - Thermal transfer, voltage transfer and stability transfer analyses for all for internal interfaces unless reasonable potential for SUFs
    - Full N-1-1 analysis (only limited local N-1-1 analysis to be performed)
  - SRIS to include short circuit, local steady state, local stability and additional analysis if reasonably expected to identify reliability violations requiring SUFs

# Class Year Study Efficiencies

## B. Eliminate Duplication in SRIS and Class Year Studies (continued)

### Tariff Revisions

- See proposed tariff revisions attached to the meeting materials:
  - OATT § 25.6.1.1.1.4
  - OATT § 25.6.1.1.1.5
  - OATT § 30.7.3.1

DRAFT – FOR DISCUSSION PURPOSES ONLY



# Class Year Study Efficiencies

## C. Require **Class Year Agreements, Deposits and Project Data** Earlier in Class Year Process

### Overview

- Currently, **execution of the Class Year Study Agreement, required deposits and** project data need not be submitted until 30 days after the agreement is tendered
  - Project data needs to be validated, and if deficient, additional information/clarification is required from the Developer
- Proposal would require **execution of the Class Year Study Agreement, submission of required deposits and** project data on the earlier of the Class Year Start Date or **~~30 days~~ 10 Calendar Days** after the Class Year Study Agreement is tendered

### Benefits of this Proposal

- Potential to shorten duration of Class Year Study



DRAFT – FOR DISCUSSION PURPOSES ONLY

# Class Year Study Efficiencies

## C. Require Class Year Agreements, Deposits and Project Data Earlier in Class Year Process (continued)

### Details

- Would not be applicable to Class Year 2019
- Require Developer to submit **executed Class Year Study agreement, required deposits and** data requested on Attachment B to the Facilities Study Agreement and data required by the Connecting Transmission Owner **by the earlier of the Class Year Start Date or 10 Calendars Days after the NYISO tenders the Class Year Study Agreement**
  - **Data required by Connecting Transmission Owner is required within 10 Calendar Days to the extent such data is requested when the NYISO issues its notice of a Class Year Start Date or in the email tendering the Facilities Study Agreement**



DRAFT - FOR DISCUSSION PURPOSES ONLY



# Class Year Study Efficiencies

## C. Require Class Year Agreements, Deposits and Project Data Earlier in Class Year Process (continued)

### Details (continued)

- TO-required data that will be required for Class Year Study to be identified in the SRIS scoping meeting
- Consequence to Developer that fails to provide **executed agreement, required deposits and** required data is withdrawal from the Class Year
  - Counting as one of Developer’s two Class Year “strikes”

DRAFT – FOR DISCUSSION PURPOSES ONLY

# Class Year Study Efficiencies

## C. Require Class Year Agreements, Deposits and Project Data Earlier in Class Year Process (continued)

### Tariff Revisions

- See proposed tariff revisions attached to the meeting materials:
  - OATT § 25.5.9
  - OATT § 30.8.1

DRAFT – FOR DISCUSSION PURPOSES ONLY

# Class Year Study Efficiencies

## D. Revise & Clarify Regulatory Milestone Requirements and Treatment of Deposits

### Overview

- Permit a project to rely on certain agreements and alternative milestones in lieu of a regulatory milestone deposit
- Clarify application of regulatory milestone for offshore wind and projects undergoing an uncoordinated SEQRA review
- Permit return of deposit in lieu of regulatory milestone at completion of Class Year Study
- Clarify how **all interconnection study** deposits are refunded

# Class Year Study Efficiencies

## D. Revise & Clarify Regulatory Milestone Requirements and Treatment of Deposits

### Benefits of this Proposal

- Adds additional flexibility to allow projects to enter a Class Year Study prior to satisfaction of a regulatory milestone
- Adds clarity to required regulatory milestones and the manner in which regulatory milestone deposits are handled
- Provides consistency among OATT tariff provisions regarding the refund of study deposits, consistent with FERC's treatment of deposits in other regions

DRAFT – FOR DISCUSSION PURPOSES ONLY



# Class Year Study Efficiencies

## D. Revise & Clarify Regulatory Milestone Requirements and Treatment of Deposits

### Details

- Alternative milestones in lieu of regulatory milestone deposit
  - NYISO proposes the following milestones that could be used in lieu of the \$100,000 + \$3,000/MW deposit in lieu of an applicable regulatory milestone:
    - NYSERDA Renewable Energy Credit (REC) contract
    - NYSERDA “Market Bridge Incentive” contract
    - Power purchase agreement
    - Article VII application deemed complete (for portions of a generation project subject to Article VII)



DRAFT – FOR DISCUSSION PURPOSES ONLY

# Class Year Study Efficiencies

## D. Revise & Clarify Regulatory Milestone Requirements and Treatment of Deposits

### Details

- Alternative milestones in lieu of regulatory milestone deposit (continued)
  - NYISO does not propose to allow such alternative milestones to satisfy the regulatory milestone itself
    - A financial contract is not a milestone in project development akin to a the permitting milestones currently used as regulatory milestone requirements
  - Transition rule allowing projects in CY19 to get a refund of deposits paid in lieu of regulatory milestone if they meet one of these alternative milestones on or before 30 days of FERC order



DRAFT - FOR DISCUSSION PURPOSES ONLY

# Class Year Study Efficiencies

## D. Revise & Clarify Regulatory Milestone Requirements and Treatment of Deposits

### Details (continued)

- Clarify regulatory milestone requirement for offshore wind
  - Applicable federal regulatory milestones for offshore wind facilities on the Outer Continental Shelf (“OCS”):
    - Construction and Operations Plan (“COP”) deemed complete and sufficient by Bureau of Ocean Energy Management (“BOEM”)
    - Notice of Availability of a Draft Environmental Impact Statement filed with the U.S. Environmental Protection Agency pursuant to the National Policy Act of 1969 (“NEPA”) and implementing regulations
    - Final Finding of No Significant Impact for the project issued by the lead agency (i.e., BOEM) pursuant to the NEPA and implementing regulations

# Class Year Study Efficiencies

## D. Revise & Clarify Regulatory Milestone Requirements and Treatment of Deposits

### Details (continued)

- Clarify application of regulatory milestone for offshore wind (continued)
  - Applicable NYS regulatory milestones for offshore wind facilities greater than 25 MW and within NYS jurisdictional waters:
    - a determination pursuant to Article 10 of the Public Service Law that the Article 10 application filed for the Large Generator is in compliance with Public Service Law § 164
  - NYISO proposes to add additional detail in the tariff or Transmission Expansion and Interconnection Manual to explain the manner in which the current regulatory milestone requirements apply to offshore wind

DRAFT – FOR DISCUSSION PURPOSES ONLY





# Class Year Study Efficiencies

## D. Revise & Clarify Regulatory Milestone Requirements and Treatment of Deposits

### Details (continued)

- Clarify application of regulatory milestone for uncoordinated SEQRA review
  - NYISO proposes to clarify existing language to account for projects undergoing an uncoordinated SEQRA review (i.e., where no lead agency is designated)
  - Clarify that a negative declaration issued by any entity in accordance with SEQRA will satisfy the regulatory milestone application

# Class Year Study Efficiencies

## D. Revise & Clarify Regulatory Milestone Requirements and Treatment of Deposits

### Details (continued)

- Additional clarification regarding deposit in lieu of regulatory milestone
  - For uprates, the deposit is only required for the incremental MW
  - Revise Attachment S to mirror Attachment X with regard to when the regulatory milestone deposit is due
  - Regulatory milestone must be met by the earlier of (1) tender of a Class Year Study Agreement; or (2) the Class Year Start Date
  - If the Developer elects to submit a deposit in lieu of the regulatory milestone, that deposit is not due until 30 days after the Class Year Study Agreement is tendered
    - A Developer must, however, advise the NYISO within 5 Business Days after the Class Year Start Date, whether it will submit a deposit in lieu of the regulatory milestone

DRAFT - FOR DISCUSSION PURPOSES ONLY



# Class Year Study Efficiencies

## D. Revise & Clarify Regulatory Milestone Requirements and Treatment of Deposits

### Details (continued)

- Return of **interconnection study deposits, including the** deposit in lieu of regulatory milestone
  - Currently, \$3,000/MW portion of the deposit in lieu of regulatory milestone is returned upon the earlier of satisfaction of the milestone or withdrawal from the queue
    - NYISO proposes to change this to allow deposit to be returned at earlier of satisfaction of regulatory milestone or completion of Class Year
  - NYISO also proposes that whenever **an interconnection study deposit, including** the deposit in lieu of regulatory milestone is returned, the deposit will be returned without interest (currently, refundable deposits are returned with interest upon a project's withdrawal from the queue)
  - **NYISO proposes to clarify language regarding refundability of site control deposit**

DRAFT - FOR DISCUSSION PURPOSES ONLY



# Class Year Study Efficiencies

## D. Revise & Clarify Regulatory Milestone Requirements and Treatment of Deposits

### Tariff Revisions

- See proposed tariff revisions attached to the meeting materials:
  - OATT § 25.5.9
  - OATT § 25.6.2.3.1.1
  - New OATT § 25.6.2.3.1.1.8
  - New OATT § 25.6.2.3.1.1.9
  - OATT § 30.3.3.1
  - OATT § 30.3.6
  - OATT § 30.8.1

DRAFT – FOR DISCUSSION PURPOSES ONLY



# Class Year Study Efficiencies

## E. Expand Definition of Class Year Transmission Project

### Overview

- Expand the definition of Class Year Transmission Project to include controllable transmission not eligible for or requesting CRIS but that wishes to proceed through Attachment X and the Class Year Study for ERIS only

### Benefits of this Proposal

- Aligns definition of Class Year Transmission Project with previous definition of Merchant Transmission Project that did not limit Class Year entry to transmission projects based on their CRIS eligibility



DRAFT – FOR DISCUSSION PURPOSES ONLY

# Class Year Study Efficiencies

## E. Expand Definition of Class Year Transmission Project

### Details

- Revise definition of Class Year Transmission Project to include all controllable merchant transmission project requesting only ERIS

### Tariff Revisions

- See proposed tariff revisions attached to the meeting materials:
  - OATT § 25.1.2
  - OATT § 25.3.1
  - OATT § 30.1

DRAFT – FOR DISCUSSION PURPOSES ONLY



# Next Steps

DRAFT – FOR DISCUSSION PURPOSES ONLY

© COPYRIGHT NYISO 2019. ALL RIGHTS RESERVED.



# Next Steps

## ■ Anticipated Schedule Going Forward

- Through October 2019
  - Continue to refine proposals
  - Vet tariff language
- November/December 2019
  - Stakeholder and Board approvals
  - FERC filing
- February/March 2020
  - FERC order prior to Class Year 2019 Notice of Additional SDU Studies

DRAFT – FOR DISCUSSION PURPOSES ONLY





# Feedback?

- Email feedback to:  
[InterconnectionSupport@nyiso.com](mailto:InterconnectionSupport@nyiso.com)

## The Mission of the New York Independent System Operator, in collaboration with its stakeholders, is to serve the public interest and provide benefits to consumers by:

- Maintaining and enhancing regional reliability
- Operating open, fair and competitive wholesale electricity markets
- Planning the power system for the future
- Providing factual information to policy makers, stakeholders and investors in the power system



[www.nyiso.com](http://www.nyiso.com)

DRAFT – FOR DISCUSSION PURPOSES ONLY