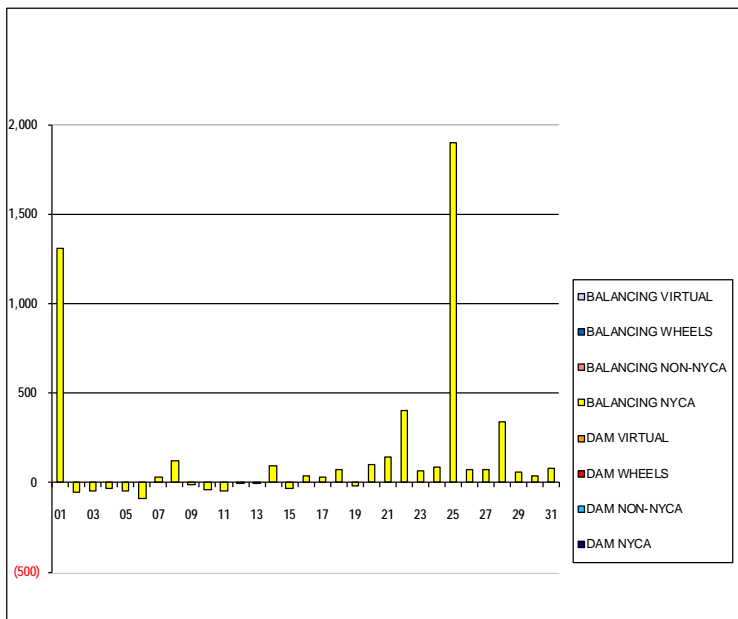


SETTLEMENTS REPORT  
 May 2019 Settlement Adjustment  
 October 7, 2019

Settlement Adjustment – Market Supply Delta Analysis

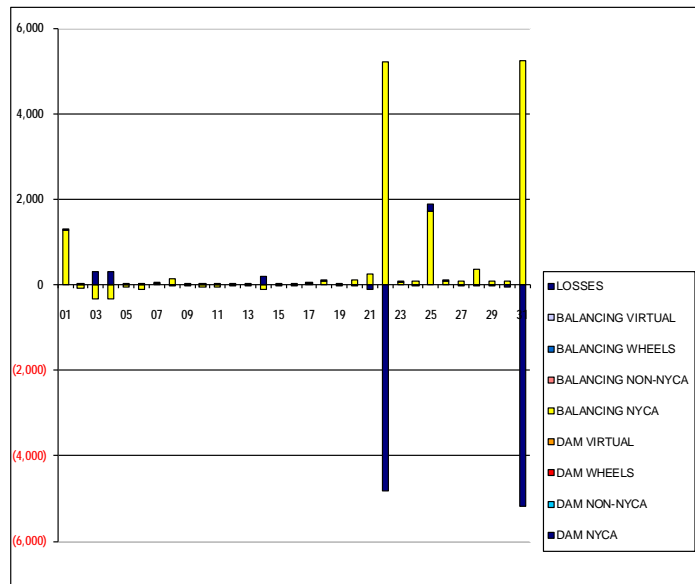
	MONDAY	TUESDAY	WEDNESDAY	THURSDAY	FRIDAY	SATURDAY	SUNDAY
			1	2	3	4	5
DAM NYCA			0	0	0	0	0
DAM NON-NYCA			0	0	0	0	0
DAM WHEELS			0	0	0	0	0
DAM VIRTUAL			0	0	0	0	0
BALANCING NYCA			1,306	(57)	(48)	(33)	(45)
BALANCING NON-NYCA			0	0	0	0	0
BALANCING WHEELS			0	0	0	0	0
BALANCING VIRTUAL			0	0	0	0	0
	6	7	8	9	10	11	12
DAM NYCA	0	0	0	0	0	0	0
DAM NON-NYCA	0	0	0	0	0	0	0
DAM WHEELS	0	0	0	0	0	0	0
DAM VIRTUAL	0	0	0	0	0	0	0
BALANCING NYCA	(88)	32	123	(14)	(43)	(49)	(8)
BALANCING NON-NYCA	0	0	0	0	0	0	0
BALANCING WHEELS	0	0	0	0	0	0	0
BALANCING VIRTUAL	0	0	0	0	0	0	0
	13	14	15	16	17	18	19
DAM NYCA	0	0	0	0	0	0	0
DAM NON-NYCA	0	0	0	0	0	0	0
DAM WHEELS	0	0	0	0	0	0	0
DAM VIRTUAL	0	0	0	0	0	0	0
BALANCING NYCA	(4)	92	(30)	35	28	75	(19)
BALANCING NON-NYCA	0	0	0	0	0	0	0
BALANCING WHEELS	0	0	0	0	0	0	0
BALANCING VIRTUAL	0	0	0	0	0	0	0
	20	21	22	23	24	25	26
DAM NYCA	0	0	0	0	0	0	0
DAM NON-NYCA	0	0	0	0	0	0	0
DAM WHEELS	0	0	0	0	0	0	0
DAM VIRTUAL	0	0	0	0	0	0	0
BALANCING NYCA	102	146	401	63	87	1,897	71
BALANCING NON-NYCA	0	0	0	0	0	0	0
BALANCING WHEELS	0	0	0	0	0	0	0
BALANCING VIRTUAL	0	0	0	0	0	0	0
	27	28	29	30	31		
DAM NYCA	0	0	0	0	0		
DAM NON-NYCA	0	0	0	0	0		
DAM WHEELS	0	0	0	0	0		
DAM VIRTUAL	0	0	0	0	0		
BALANCING NYCA	70	343	60	37	77		
BALANCING NON-NYCA	0	0	0	0	0		
BALANCING WHEELS	0	0	0	0	0		
BALANCING VIRTUAL	0	0	0	0	0		



SETTLEMENTS REPORT  
 May 2019 Settlement Adjustment  
 October 7, 2019

Settlement Adjustment – Market Withdrawals Delta Analysis

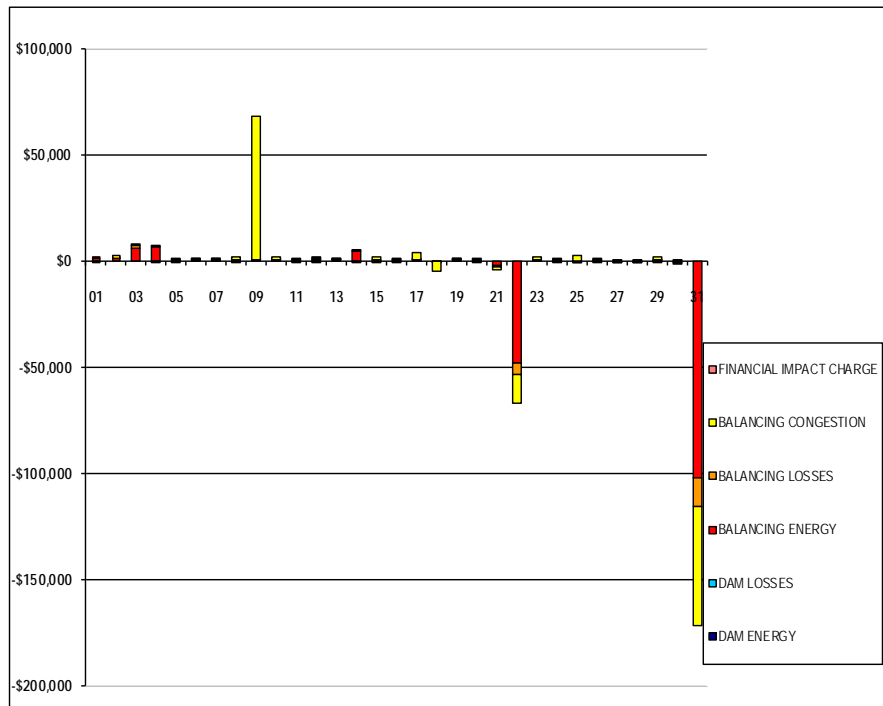
	MONDAY	TUESDAY	WEDNESDAY	THURSDAY	FRIDAY	SATURDAY	SUNDAY
			1	2	3	4	5
DAM NYCA			0	0	0	0	0
DAM NON-NYCA			0	0	0	0	0
DAM WHEELS			0	0	0	0	0
DAM VIRTUAL			0	0	0	0	0
BALANCING NYCA			1,274	(95)	(342)	(327)	(45)
BALANCING NON-NYCA			0	0	0	0	0
BALANCING WHEELS			0	0	0	0	0
BALANCING VIRTUAL			0	0	0	0	0
UFE/LOSSES			32	38	294	294	0
	6	7	8	9	10	11	12
DAM NYCA	0	0	0	0	0	0	0
DAM NON-NYCA	0	0	0	0	0	0	0
DAM WHEELS	0	0	0	0	0	0	0
DAM VIRTUAL	0	0	0	0	0	0	0
BALANCING NYCA	(102)	26	131	(14)	(44)	(49)	(8)
BALANCING NON-NYCA	0	0	0	0	0	0	0
BALANCING WHEELS	0	0	0	0	0	0	0
BALANCING VIRTUAL	0	0	0	0	0	0	0
UFE/LOSSES	14	6	(8)	0	2	0	0
	13	14	15	16	17	18	19
DAM NYCA	0	0	0	0	0	0	0
DAM NON-NYCA	0	0	0	0	0	0	0
DAM WHEELS	0	0	0	0	0	0	0
DAM VIRTUAL	0	0	0	0	0	0	0
BALANCING NYCA	(4)	(99)	6	35	28	73	(19)
BALANCING NON-NYCA	0	0	0	0	0	0	0
BALANCING WHEELS	0	0	0	0	0	0	0
BALANCING VIRTUAL	0	0	0	0	0	0	0
UFE/LOSSES	0	191	(36)	(0)	0	2	0
	20	21	22	23	24	25	26
DAM NYCA	0	0	0	0	0	0	0
DAM NON-NYCA	0	0	0	0	0	0	0
DAM WHEELS	0	0	0	0	0	0	0
DAM VIRTUAL	0	0	0	0	0	0	0
BALANCING NYCA	123	248	5,223	49	87	1,718	71
BALANCING NON-NYCA	0	0	0	0	0	0	0
BALANCING WHEELS	0	0	0	0	0	0	0
BALANCING VIRTUAL	0	0	0	0	0	0	0
UFE/LOSSES	(21)	(102)	(4,823)	15	(0)	179	0
	27	28	29	30	31		
DAM NYCA	0	0	0	0	0		
DAM NON-NYCA	0	0	0	0	0		
DAM WHEELS	0	0	0	0	0		
DAM VIRTUAL	0	0	0	0	0		
BALANCING NYCA	70	362	96	88	5,247		
BALANCING NON-NYCA	0	0	0	0	0		
BALANCING WHEELS	0	0	0	0	0		
BALANCING VIRTUAL	0	0	0	0	0		
UFE/LOSSES	(0)	(19)	(36)	(52)	(5,171)		



SETTLEMENTS REPORT  
 May 2019 Settlement Adjustment  
 October 7, 2019

Settlement Adjustment – Market Residuals Delta Analysis

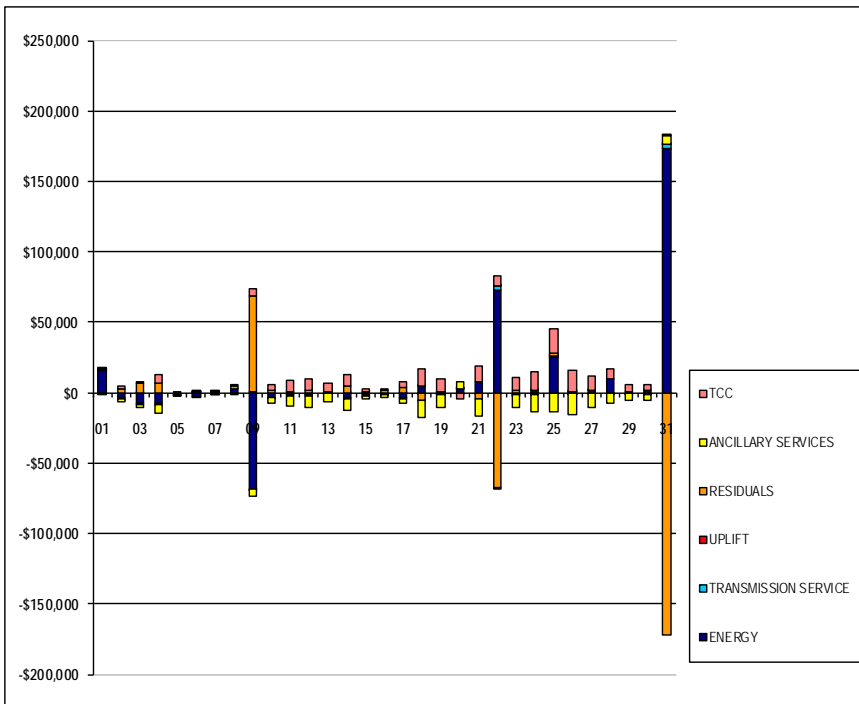
	MONDAY	TUESDAY	WEDNESDAY	THURSDAY	FRIDAY	SATURDAY	SUNDAY
			1	2	3	4	5
DAM ENERGY			\$0.01	\$0.00	\$0.00	\$0.00	\$0.00
DAM LOSSES			\$0.00	(\$0.01)	(\$0.01)	\$0.00	\$0.00
BALANCING ENERGY			\$724.85	\$720.17	\$6,008.57	\$6,422.23	\$7.80
BALANCING LOSSES			\$142.21	\$255.94	\$760.33	\$590.65	\$123.03
BALANCING CONGESTION			(\$481.18)	\$1,487.31	\$5.00	(\$69.06)	(\$196.34)
FINANCIAL IMPACT CHARGE			\$0.00	\$0.00	\$0.00	\$0.00	\$0.00
	6	7	8	9	10	11	12
DAM ENERGY	\$0.00	\$0.00	\$0.00	\$0.00	\$0.00	\$0.00	\$0.00
DAM LOSSES	(\$0.01)	\$0.01	(\$0.01)	\$0.01	\$0.00	\$0.00	(\$0.01)
BALANCING ENERGY	\$197.84	\$92.28	(\$171.11)	\$32.50	\$23.66	(\$16.74)	(\$1.98)
BALANCING LOSSES	\$256.35	\$48.16	\$24.20	\$587.38	\$62.86	\$110.23	\$90.20
BALANCING CONGESTION	\$545.73	\$628.49	\$1,430.67	\$67,373.50	\$1,544.13	\$873.22	\$1,046.86
FINANCIAL IMPACT CHARGE	\$0.00	\$0.00	\$0.00	\$0.00	\$0.00	\$0.00	\$0.01
	13	14	15	16	17	18	19
DAM ENERGY	(\$0.01)	\$0.00	\$0.00	\$0.00	\$0.01	\$0.00	\$0.01
DAM LOSSES	\$0.00	\$0.00	\$0.00	\$0.00	\$0.00	\$0.00	\$0.00
BALANCING ENERGY	\$0.62	\$4,204.60	(\$616.65)	(\$6.54)	\$25.35	(\$372.68)	\$20.16
BALANCING LOSSES	\$114.00	\$641.79	\$113.80	\$125.18	\$362.18	(\$24.25)	\$1.67
BALANCING CONGESTION	\$13.56	(\$11.61)	\$1,378.44	\$1,082.33	\$3,649.25	(\$4,562.76)	\$86.78
FINANCIAL IMPACT CHARGE	\$0.00	\$0.00	\$0.00	\$0.00	\$0.00	(\$0.05)	\$0.00
	20	21	22	23	24	25	26
DAM ENERGY	(\$0.01)	\$0.00	(\$0.01)	(\$0.01)	\$0.00	\$0.00	\$0.01
DAM LOSSES	\$0.01	\$0.01	\$0.00	\$0.00	\$0.00	\$0.00	\$0.00
BALANCING ENERGY	(\$394.97)	(\$2,660.51)	(\$48,379.40)	\$195.29	\$6.12	(\$47.78)	\$2.37
BALANCING LOSSES	\$18.21	(\$426.24)	(\$5,322.66)	\$147.25	\$167.69	(\$113.83)	\$66.46
BALANCING CONGESTION	\$473.04	(\$1,100.88)	(\$13,283.26)	\$1,411.25	(\$496.52)	\$2,570.71	(\$27.93)
FINANCIAL IMPACT CHARGE	\$0.00	\$0.00	\$0.00	\$0.00	\$0.00	\$0.00	\$0.00
	27	28	29	30	31		
DAM ENERGY	\$0.00	\$0.00	\$0.01	\$0.00	\$0.00		
DAM LOSSES	\$0.00	(\$0.01)	\$0.01	\$0.00	\$0.00		
BALANCING ENERGY	(\$2.50)	(\$420.48)	(\$576.26)	(\$727.06)	(\$102,310.24)		
BALANCING LOSSES	\$210.23	\$154.21	\$168.95	\$92.64	(\$13,502.12)		
BALANCING CONGESTION	(\$157.59)	(\$220.98)	\$1,496.45	(\$247.24)	(\$55,913.18)		
FINANCIAL IMPACT CHARGE	\$0.00	\$0.00	\$0.00	\$0.00	\$0.00		



SETTLEMENTS REPORT  
 May 2019 Settlement Adjustment  
 October 7, 2019

Settlement Adjustment – Market Costs Delta Analysis

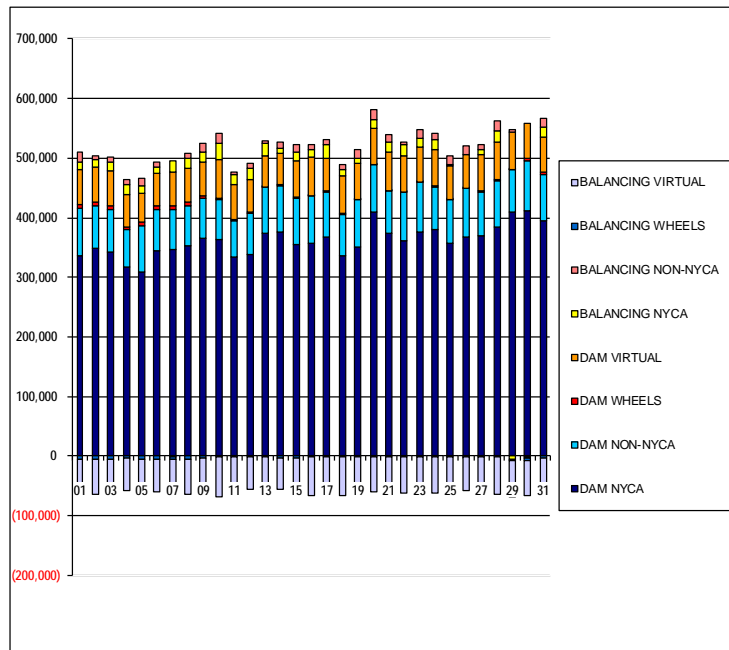
	MONDAY	TUESDAY	WEDNESDAY	THURSDAY	FRIDAY	SATURDAY	SUNDAY
			1	2	3	4	5
ENERGY			\$15,363.25	(\$3,741.32)	(\$7,789.58)	(\$7,661.50)	(\$975.16)
TRANSMISSION SERVICE			\$276.98	(\$831.86)	(\$1,022.08)	(\$1,065.55)	(\$927.96)
UPLIFT			(\$2.45)	(\$54.93)	\$0.71	\$0.01	(\$0.13)
RESIDUALS			\$385.89	\$2,463.41	\$6,773.89	\$6,943.82	(\$65.51)
ANCILLARY SERVICES			\$462.95	(\$1,969.55)	(\$1,472.29)	(\$6,107.06)	\$72.99
TCC			\$1,840.41	\$2,229.69	\$1,313.02	\$5,886.23	\$0.00
	6	7	8	9	10	11	12
ENERGY	(\$2,442.54)	(\$396.51)	\$2,845.22	(\$68,041.55)	(\$3,031.98)	(\$1,838.90)	(\$1,364.15)
TRANSMISSION SERVICE	(\$799.21)	(\$811.01)	(\$670.27)	(\$851.69)	(\$769.92)	(\$719.52)	(\$719.52)
UPLIFT	\$8.58	\$5.22	\$182.87	\$839.40	(\$0.01)	\$0.00	(\$0.02)
RESIDUALS	\$999.91	\$768.94	\$1,283.75	\$67,993.39	\$1,630.65	\$966.71	\$1,135.08
ANCILLARY SERVICES	\$251.71	\$272.28	\$517.73	(\$4,969.93)	(\$3,946.48)	(\$6,920.85)	(\$8,272.64)
TCC	\$0.00	\$0.00	\$0.00	\$5,168.26	\$4,260.09	\$7,309.83	\$8,580.64
	13	14	15	16	17	18	19
ENERGY	(\$273.24)	(\$3,533.29)	(\$1,514.57)	(\$623.00)	(\$3,518.75)	\$4,712.82	(\$717.37)
TRANSMISSION SERVICE	(\$614.48)	(\$804.41)	(\$802.44)	(\$857.76)	(\$632.24)	(\$699.84)	(\$711.26)
UPLIFT	(\$0.01)	\$1.56	(\$5.47)	(\$37.66)	\$0.11	\$26.23	\$43.83
RESIDUALS	\$128.17	\$4,834.78	\$875.59	\$1,200.97	\$4,036.79	(\$4,959.74)	\$108.62
ANCILLARY SERVICES	(\$5,701.25)	(\$7,974.16)	(\$1,738.18)	(\$1,674.35)	(\$2,963.46)	(\$11,763.41)	(\$9,261.11)
TCC	\$6,265.73	\$8,218.97	\$2,017.44	\$1,878.69	\$3,508.40	\$12,217.69	\$9,671.61
	20	21	22	23	24	25	26
ENERGY	\$2,224.53	\$7,231.23	\$72,307.09	(\$1,047.77)	\$1,499.25	\$24,973.15	\$217.32
TRANSMISSION SERVICE	(\$524.74)	(\$529.10)	\$3,312.73	(\$620.65)	(\$597.81)	\$616.79	(\$630.13)
UPLIFT	\$1.37	\$0.01	\$29.88	(\$39.71)	\$0.03	\$0.04	(\$0.01)
RESIDUALS	\$96.28	(\$4,187.62)	(\$66,985.33)	\$1,753.78	(\$322.71)	\$2,409.10	\$40.91
ANCILLARY SERVICES	\$4,993.19	(\$11,485.67)	(\$1,345.19)	(\$8,681.56)	(\$13,056.25)	(\$13,972.58)	(\$14,855.06)
TCC	(\$4,255.45)	\$12,152.79	\$6,971.03	\$9,246.48	\$13,670.88	\$16,923.75	\$15,415.86
	27	28	29	30	31		
ENERGY	\$1,186.82	\$9,592.05	(\$112.16)	\$1,386.03	\$173,105.68		
TRANSMISSION SERVICE	(\$607.29)	(\$363.63)	(\$637.95)	(\$520.02)	\$3,432.14		
UPLIFT	\$0.00	(\$10.53)	\$0.00	\$0.02	\$0.26		
RESIDUALS	\$50.14	(\$487.26)	\$1,089.16	(\$881.66)	(\$171,725.54)		
ANCILLARY SERVICES	(\$9,859.35)	(\$6,207.07)	(\$4,530.10)	(\$3,651.16)	\$6,164.32		
TCC	\$10,454.70	\$7,267.84	\$5,094.63	\$4,387.79	\$600.40		



SETTLEMENTS REPORT  
 May 2019 Settlement Adjustment  
 October 7, 2019

Initial Settlement – Market Supply Analysis

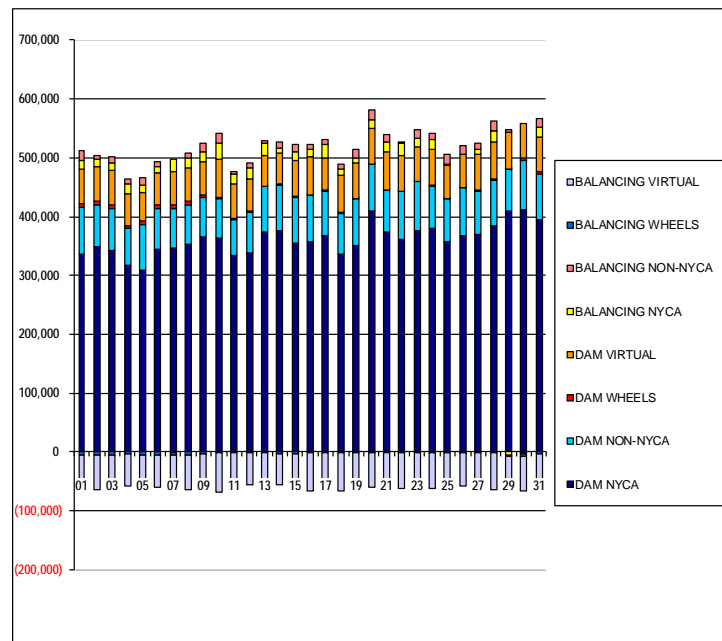
	MONDAY	TUESDAY	WEDNESDAY	THURSDAY	FRIDAY	SATURDAY	SUNDAY
			1	2	3	4	5
DAM NYCA			336,313	348,575	342,303	317,476	308,455
DAM NON-NYCA			79,136	71,560	71,842	63,877	78,276
DAM WHEELS			7,567	5,770	6,395	4,062	5,835
DAM VIRTUAL			57,559	59,123	57,534	54,045	49,223
BALANCING NYCA			12,794	12,621	14,373	17,035	11,939
BALANCING NON-NYCA			17,404	5,465	9,350	7,506	13,514
BALANCING WHEELS			(5,947)	(4,420)	(5,045)	(4,062)	(5,835)
BALANCING VIRTUAL			(57,559)	(59,123)	(57,534)	(54,045)	(49,223)
	6	7	8	9	10	11	12
DAM NYCA	345,386	347,138	353,200	365,875	364,357	333,611	337,420
DAM NON-NYCA	68,868	66,329	66,955	66,555	65,533	61,398	70,864
DAM WHEELS	6,175	5,770	5,634	3,509	2,077	1,675	2,117
DAM VIRTUAL	55,036	57,873	57,860	57,354	66,646	59,973	53,238
BALANCING NYCA	9,765	19,503	16,922	17,888	25,327	16,327	19,421
BALANCING NON-NYCA	7,537	(597)	8,117	13,254	18,369	3,728	8,118
BALANCING WHEELS	(5,223)	(4,910)	(5,634)	(3,384)	(1,777)	(1,675)	(2,117)
BALANCING VIRTUAL	(55,036)	(57,873)	(57,860)	(57,354)	(66,646)	(59,973)	(53,238)
	13	14	15	16	17	18	19
DAM NYCA	374,831	376,830	355,981	357,806	367,576	336,994	350,864
DAM NON-NYCA	76,236	76,753	76,681	78,320	75,173	68,222	78,747
DAM WHEELS	1,544	2,816	2,739	1,534	1,596	1,514	1,130
DAM VIRTUAL	50,500	52,586	59,697	63,678	56,010	64,476	60,353
BALANCING NYCA	22,585	8,312	14,505	13,347	23,039	8,941	8,911
BALANCING NON-NYCA	2,954	10,475	13,548	8,161	7,323	8,581	13,845
BALANCING WHEELS	(1,544)	(2,816)	(2,739)	(1,534)	(1,596)	(1,514)	(992)
BALANCING VIRTUAL	(50,500)	(52,586)	(59,697)	(63,678)	(56,010)	(64,476)	(60,353)
	20	21	22	23	24	25	26
DAM NYCA	409,021	373,361	360,413	376,092	379,825	357,059	367,944
DAM NON-NYCA	79,867	71,620	81,781	83,969	72,654	73,800	81,036
DAM WHEELS	710	1,040	1,647	608	1,911	540	410
DAM VIRTUAL	59,665	65,016	60,411	57,315	59,961	55,406	56,235
BALANCING NYCA	15,045	16,376	19,355	14,743	17,028	1,474	(365)
BALANCING NON-NYCA	17,704	11,507	3,314	15,890	11,139	15,740	14,421
BALANCING WHEELS	(510)	(1,040)	(1,647)	(608)	(1,911)	(540)	(200)
BALANCING VIRTUAL	(59,665)	(65,016)	(60,411)	(57,315)	(59,961)	(55,406)	(56,235)
	27	28	29	30	31		
DAM NYCA	369,955	384,669	410,236	411,226	394,677		
DAM NON-NYCA	73,584	78,325	69,782	84,359	77,812		
DAM WHEELS	1,040	1,216	1,907	3,572	4,079		
DAM VIRTUAL	61,186	62,453	61,126	58,303	58,409		
BALANCING NYCA	7,715	19,210	(4,923)	(139)	18,134		
BALANCING NON-NYCA	10,325	17,220	4,631	(4,029)	13,504		
BALANCING WHEELS	(990)	(1,216)	(1,757)	(3,472)	(4,079)		
BALANCING VIRTUAL	(61,186)	(62,453)	(61,126)	(58,303)	(58,409)		



SETTLEMENTS REPORT  
 May 2019 Settlement Adjustment  
 October 7, 2019

4-Month Settlement Adjustment – Market Supply Analysis

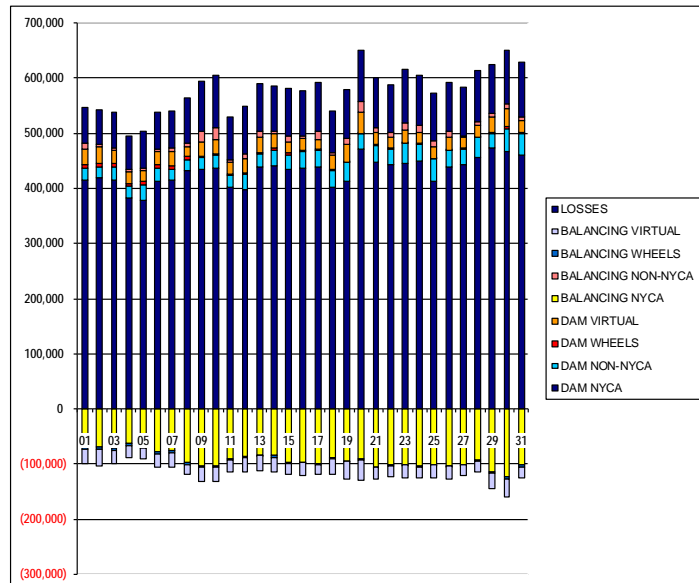
	MONDAY	TUESDAY	WEDNESDAY	THURSDAY	FRIDAY	SATURDAY	SUNDAY
			1	2	3	4	5
DAM NYCA			336,313	348,575	342,303	317,476	308,455
DAM NON-NYCA			79,136	71,560	71,842	63,877	78,276
DAM WHEELS			7,567	5,770	6,395	4,062	5,835
DAM VIRTUAL			57,559	59,123	57,534	54,045	49,223
BALANCING NYCA			14,100	12,563	14,325	17,002	11,895
BALANCING NON-NYCA			17,404	5,465	9,350	7,506	13,514
BALANCING WHEELS			(5,947)	(4,420)	(5,045)	(4,062)	(5,835)
BALANCING VIRTUAL			(57,559)	(59,123)	(57,534)	(54,045)	(49,223)
	6	7	8	9	10	11	12
DAM NYCA	345,386	347,138	353,200	365,875	364,357	333,611	337,420
DAM NON-NYCA	68,868	66,329	66,955	66,555	65,533	61,398	70,864
DAM WHEELS	6,175	5,770	5,634	3,509	2,077	1,675	2,117
DAM VIRTUAL	55,036	57,873	57,860	57,354	66,646	59,973	53,238
BALANCING NYCA	9,677	19,535	17,046	17,874	25,285	16,279	19,413
BALANCING NON-NYCA	7,537	(597)	8,117	13,254	18,369	3,728	8,118
BALANCING WHEELS	(5,223)	(4,910)	(5,634)	(3,384)	(1,777)	(1,675)	(2,117)
BALANCING VIRTUAL	(55,036)	(57,873)	(57,860)	(57,354)	(66,646)	(59,973)	(53,238)
	13	14	15	16	17	18	19
DAM NYCA	374,831	376,830	355,981	357,806	367,576	336,994	350,864
DAM NON-NYCA	76,236	76,753	76,681	78,320	75,173	68,222	78,747
DAM WHEELS	1,544	2,816	2,739	1,534	1,596	1,514	1,130
DAM VIRTUAL	50,500	52,586	59,697	63,678	56,010	64,476	60,353
BALANCING NYCA	22,581	8,404	14,476	13,383	23,068	9,017	8,893
BALANCING NON-NYCA	2,954	10,475	13,548	8,161	7,323	8,581	13,845
BALANCING WHEELS	(1,544)	(2,816)	(2,739)	(1,534)	(1,596)	(1,514)	(992)
BALANCING VIRTUAL	(50,500)	(52,586)	(59,697)	(63,678)	(56,010)	(64,476)	(60,353)
	20	21	22	23	24	25	26
DAM NYCA	409,021	373,361	360,413	376,092	379,825	357,059	367,944
DAM NON-NYCA	79,867	71,620	81,781	83,969	72,654	73,800	81,036
DAM WHEELS	710	1,040	1,647	608	1,911	540	410
DAM VIRTUAL	59,665	65,016	60,411	57,315	59,961	55,406	56,235
BALANCING NYCA	15,148	16,522	19,756	14,806	17,115	3,371	(293)
BALANCING NON-NYCA	17,704	11,507	3,314	15,890	11,139	15,740	14,421
BALANCING WHEELS	(510)	(1,040)	(1,647)	(608)	(1,911)	(540)	(200)
BALANCING VIRTUAL	(59,665)	(65,016)	(60,411)	(57,315)	(59,961)	(55,406)	(56,235)
	27	28	29	30	31		
DAM NYCA	369,955	384,669	410,236	411,226	394,677		
DAM NON-NYCA	73,584	78,325	69,782	84,359	77,812		
DAM WHEELS	1,040	1,216	1,907	3,572	4,079		
DAM VIRTUAL	61,186	62,453	61,126	58,303	58,409		
BALANCING NYCA	7,785	19,553	(4,863)	(103)	18,211		
BALANCING NON-NYCA	10,325	17,220	4,631	(4,029)	13,504		
BALANCING WHEELS	(990)	(1,216)	(1,757)	(3,472)	(4,079)		
BALANCING VIRTUAL	(61,186)	(62,453)	(61,126)	(58,303)	(58,409)		



SETTLEMENTS REPORT  
 May 2019 Settlement Adjustment  
 October 7, 2019

**Initial Settlement – Market Withdrawals Analysis**

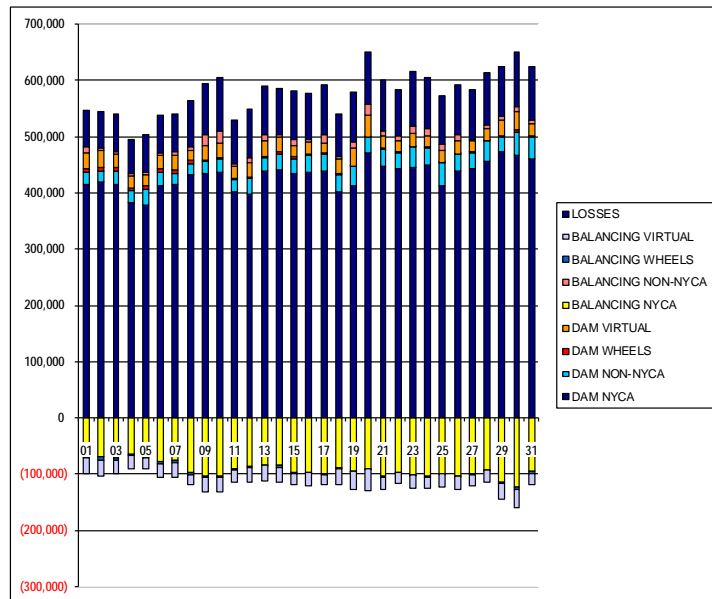
	MONDAY	TUESDAY	WEDNESDAY	THURSDAY	FRIDAY	SATURDAY	SUNDAY
			1	2	3	4	5
DAM NYCA			415,732	418,968	415,520	382,822	377,770
DAM NON-NYCA			20,308	20,593	22,392	22,420	29,720
DAM WHEELS			7,567	5,770	6,395	4,062	5,835
DAM VIRTUAL			27,206	29,660	24,128	21,945	19,162
BALANCING NYCA			(67,061)	(69,985)	(70,684)	(63,374)	(66,276)
BALANCING NON-NYCA			10,227	5,197	6,034	2,678	3,124
BALANCING WHEELS			(5,947)	(4,420)	(5,045)	(4,062)	(5,835)
BALANCING VIRTUAL			(27,206)	(29,660)	(24,128)	(21,945)	(19,162)
UFE/LOSSES			66,441	63,448	64,605	61,349	67,846
	6	7	8	9	10	11	12
DAM NYCA	411,909	415,206	431,902	434,041	437,538	402,216	398,538
DAM NON-NYCA	24,317	20,325	19,916	21,006	22,963	21,656	27,334
DAM WHEELS	6,175	5,770	5,634	3,509	2,077	1,675	2,117
DAM VIRTUAL	23,911	26,678	17,422	25,225	26,133	21,578	25,103
BALANCING NYCA	(77,531)	(74,616)	(96,473)	(102,685)	(103,970)	(91,408)	(86,484)
BALANCING NON-NYCA	4,555	4,494	7,172	20,217	21,151	4,808	9,429
BALANCING WHEELS	(5,223)	(4,910)	(5,634)	(3,384)	(1,777)	(1,675)	(2,117)
BALANCING VIRTUAL	(23,911)	(26,678)	(17,422)	(25,225)	(26,133)	(21,578)	(25,103)
UFE/LOSSES	68,306	66,963	82,677	90,994	95,904	77,793	87,007
	13	14	15	16	17	18	19
DAM NYCA	437,852	441,213	435,182	436,197	439,507	401,859	413,789
DAM NON-NYCA	25,246	28,396	25,885	31,268	30,140	30,186	33,220
DAM WHEELS	1,544	2,816	2,739	1,534	1,596	1,514	1,130
DAM VIRTUAL	27,497	25,866	20,629	21,910	18,057	27,397	31,293
BALANCING NYCA	(83,563)	(84,728)	(96,433)	(96,556)	(99,533)	(89,399)	(94,622)
BALANCING NON-NYCA	10,803	5,018	9,807	4,272	13,454	4,695	11,226
BALANCING WHEELS	(1,544)	(2,816)	(2,739)	(1,534)	(1,596)	(1,514)	(992)
BALANCING VIRTUAL	(27,497)	(25,866)	(20,629)	(21,910)	(18,057)	(27,397)	(31,293)
UFE/LOSSES	86,267	82,472	86,274	82,453	89,544	75,397	88,755
	20	21	22	23	24	25	26
DAM NYCA	471,077	447,168	443,771	445,926	450,092	412,694	437,852
DAM NON-NYCA	27,599	31,118	28,109	35,988	29,982	40,346	30,163
DAM WHEELS	710	1,040	1,647	608	1,911	540	410
DAM VIRTUAL	37,858	21,351	19,592	23,086	19,905	22,636	25,260
BALANCING NYCA	(91,288)	(104,858)	(101,596)	(101,593)	(103,203)	(101,159)	(102,895)
BALANCING NON-NYCA	19,477	9,733	7,546	13,231	11,701	10,816	10,863
BALANCING WHEELS	(510)	(1,040)	(1,647)	(608)	(1,911)	(540)	(200)
BALANCING VIRTUAL	(37,858)	(21,351)	(19,592)	(23,086)	(19,905)	(22,636)	(25,260)
UFE/LOSSES	94,773	89,703	87,033	97,142	92,074	85,376	87,053
	27	28	29	30	31		
DAM NYCA	442,089	456,362	473,584	467,655	460,537		
DAM NON-NYCA	29,866	36,049	25,849	40,526	37,848		
DAM WHEELS	1,040	1,216	1,907	3,572	4,079		
DAM VIRTUAL	20,384	20,370	28,542	32,653	19,652		
BALANCING NYCA	(100,490)	(93,019)	(114,285)	(123,525)	(101,033)		
BALANCING NON-NYCA	2,507	7,278	6,481	8,913	6,594		
BALANCING WHEELS	(990)	(1,216)	(1,757)	(3,472)	(4,079)		
BALANCING VIRTUAL	(20,384)	(20,370)	(28,542)	(32,653)	(19,652)		
UFE/LOSSES	87,607	92,754	88,098	97,847	100,181		



SETTLEMENTS REPORT  
 May 2019 Settlement Adjustment  
 October 7, 2019

4-Month Settlement Adjustment – Market Withdrawals Analysis

	MONDAY	TUESDAY	WEDNESDAY	THURSDAY	FRIDAY	SATURDAY	SUNDAY
			1	2	3	4	5
DAM NYCA			415,732	418,968	415,520	382,822	377,770
DAM NON-NYCA			20,308	20,593	22,392	22,420	29,720
DAM WHEELS			7,567	5,770	6,395	4,062	5,835
DAM VIRTUAL			27,206	29,660	24,128	21,945	19,162
BALANCING NYCA			(65,787)	(70,081)	(71,026)	(63,701)	(66,321)
BALANCING NON-NYCA			10,227	5,197	6,034	2,678	3,124
BALANCING WHEELS			(5,947)	(4,420)	(5,045)	(4,062)	(5,835)
BALANCING VIRTUAL			(27,206)	(29,660)	(24,128)	(21,945)	(19,162)
UFE/LOSSES			66,472	63,486	64,899	61,643	67,846
	6	7	8	9	10	11	12
DAM NYCA	411,909	415,206	431,902	434,041	437,538	402,216	398,538
DAM NON-NYCA	24,317	20,325	19,916	21,006	22,963	21,656	27,334
DAM WHEELS	6,175	5,770	5,634	3,509	2,077	1,675	2,117
DAM VIRTUAL	23,911	26,678	17,422	25,225	26,133	21,578	25,103
BALANCING NYCA	(7,633)	(74,589)	(96,342)	(102,699)	(104,014)	(91,457)	(86,492)
BALANCING NON-NYCA	4,555	4,494	7,172	20,217	21,151	4,808	9,429
BALANCING WHEELS	(5,223)	(4,910)	(5,634)	(3,384)	(1,777)	(1,675)	(2,117)
BALANCING VIRTUAL	(23,911)	(26,678)	(17,422)	(25,225)	(26,133)	(21,578)	(25,103)
UFE/LOSSES	68,320	66,969	82,669	90,994	95,905	77,793	87,007
	13	14	15	16	17	18	19
DAM NYCA	437,852	441,213	435,182	436,197	439,507	401,859	413,789
DAM NON-NYCA	25,246	28,396	25,885	31,268	30,140	30,186	33,220
DAM WHEELS	1,544	2,816	2,739	1,534	1,596	1,514	1,130
DAM VIRTUAL	27,497	25,866	20,629	21,910	18,057	27,397	31,293
BALANCING NYCA	(83,566)	(84,827)	(96,426)	(96,521)	(99,505)	(89,326)	(94,641)
BALANCING NON-NYCA	10,803	5,018	9,807	4,272	13,454	4,695	11,226
BALANCING WHEELS	(1,544)	(2,816)	(2,739)	(1,534)	(1,596)	(1,514)	(992)
BALANCING VIRTUAL	(27,497)	(25,866)	(20,629)	(21,910)	(18,057)	(27,397)	(31,293)
UFE/LOSSES	86,267	82,663	86,238	82,453	89,544	75,399	88,755
	20	21	22	23	24	25	26
DAM NYCA	471,077	447,168	443,771	445,926	450,092	412,694	437,852
DAM NON-NYCA	27,599	31,118	28,109	35,988	29,982	40,346	30,163
DAM WHEELS	710	1,040	1,647	608	1,911	540	410
DAM VIRTUAL	37,858	21,351	19,592	23,086	19,905	22,636	25,260
BALANCING NYCA	(91,165)	(104,609)	(96,373)	(101,544)	(103,116)	(99,441)	(102,824)
BALANCING NON-NYCA	19,477	9,733	7,546	13,231	11,701	10,816	10,863
BALANCING WHEELS	(510)	(1,040)	(1,647)	(608)	(1,911)	(540)	(200)
BALANCING VIRTUAL	(37,858)	(21,351)	(19,592)	(23,086)	(19,905)	(22,636)	(25,260)
UFE/LOSSES	94,752	89,601	82,210	97,157	92,074	85,555	87,054
	27	28	29	30	31		
DAM NYCA	442,089	456,362	473,584	467,655	460,537		
DAM NON-NYCA	29,866	36,049	25,849	40,526	37,848		
DAM WHEELS	1,040	1,216	1,907	3,572	4,079		
DAM VIRTUAL	20,384	20,370	28,542	32,653	19,652		
BALANCING NYCA	(100,419)	(92,657)	(114,189)	(123,436)	(95,786)		
BALANCING NON-NYCA	2,507	7,278	6,481	8,913	6,594		
BALANCING WHEELS	(990)	(1,216)	(1,757)	(3,472)	(4,079)		
BALANCING VIRTUAL	(20,384)	(20,370)	(28,542)	(32,653)	(19,652)		
UFE/LOSSES	87,607	92,735	88,062	97,795	95,011		

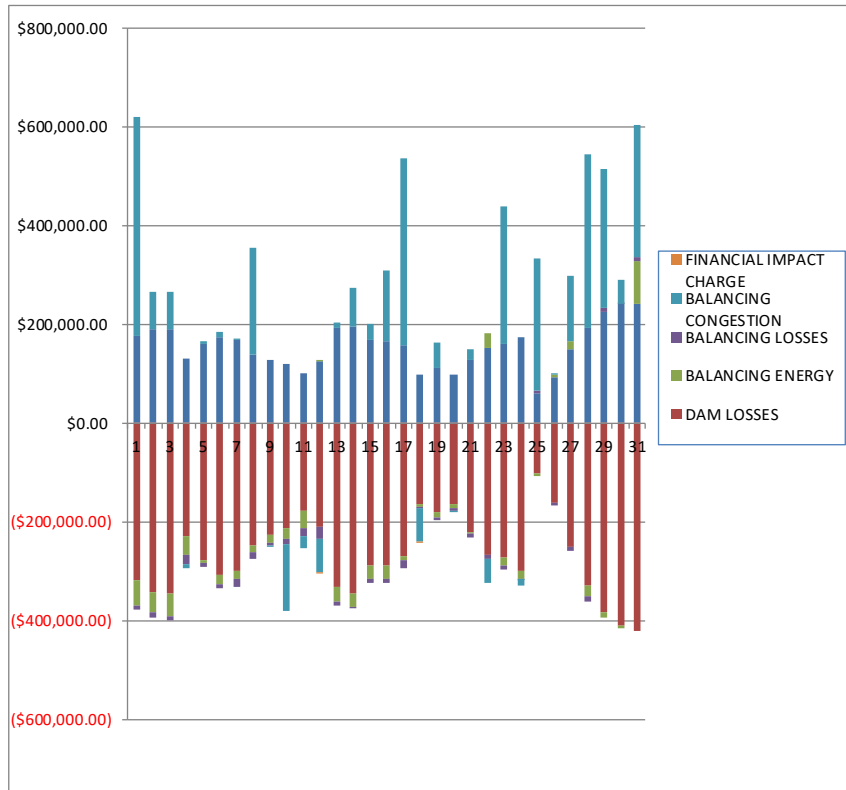




SETTLEMENTS REPORT  
 May 2019 Settlement Adjustment  
 October 7, 2019

Initial Settlement – Market Residuals Analysis

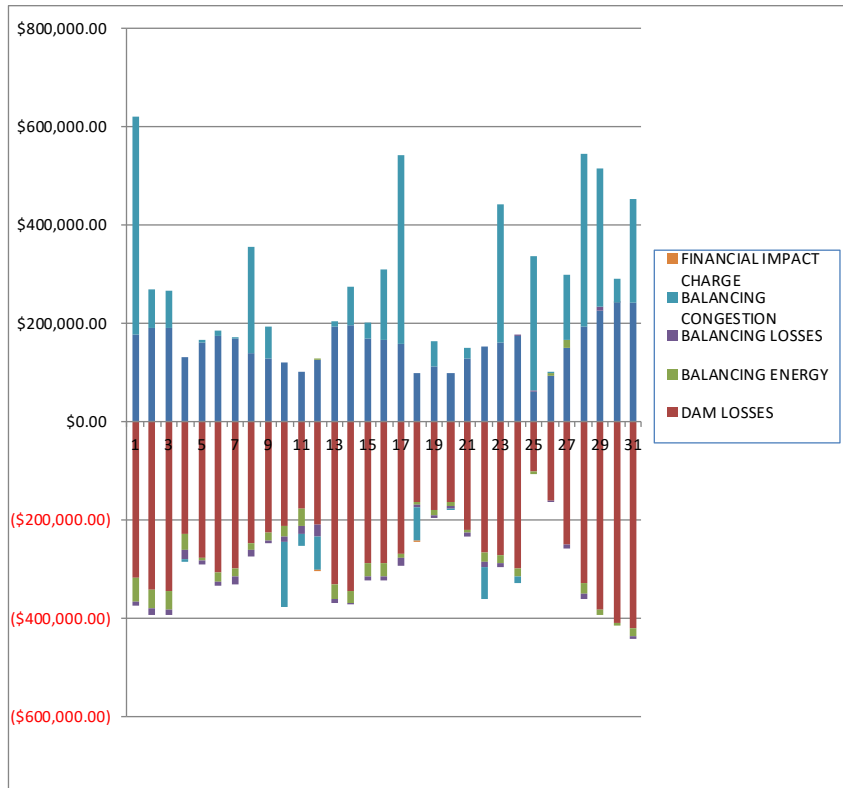
	MONDAY	TUESDAY	WEDNESDAY	THURSDAY	FRIDAY	SATURDAY	SUNDAY
			1	2	3	4	5
DAM ENERGY			\$176,987.86	\$189,604.00	\$191,662.50	\$131,987.21	\$160,810.50
DAM LOSSES			(\$319,348.05)	(\$342,977.58)	(\$345,773.86)	(\$228,092.09)	(\$276,390.62)
BALANCING ENERGY			(\$48,980.33)	(\$38,642.38)	(\$44,523.98)	(\$38,896.64)	(\$6,891.09)
BALANCING LOSSES			(\$8,291.66)	(\$13,128.99)	(\$10,022.79)	(\$19,796.62)	(\$8,343.86)
BALANCING CONGESTION			\$444,608.34	\$76,753.09	\$74,551.42	(\$6,477.24)	\$5,483.05
FINANCIAL IMPACT CHARGE			\$0.00	\$0.00	\$0.00	\$0.00	\$0.00
	6	7	8	9	10	11	12
DAM ENERGY	\$173,567.19	\$167,578.28	\$138,695.94	\$126,976.23	\$120,595.85	\$101,937.18	\$124,093.80
DAM LOSSES	(\$306,373.49)	(\$299,810.17)	(\$248,856.00)	(\$227,179.23)	(\$212,380.85)	(\$178,590.58)	(\$209,424.49)
BALANCING ENERGY	(\$19,764.11)	(\$16,823.75)	(\$11,196.62)	(\$14,516.63)	(\$21,252.68)	(\$34,972.28)	\$3,736.83
BALANCING LOSSES	(\$8,994.11)	(\$14,952.96)	(\$14,023.38)	(\$5,334.04)	(\$11,641.87)	(\$15,831.99)	(\$25,483.73)
BALANCING CONGESTION	\$11,020.73	\$2,314.48	\$216,081.84	(\$163.43)	(\$134,472.84)	(\$23,982.35)	(\$68,006.50)
FINANCIAL IMPACT CHARGE	\$0.00	\$0.00	\$0.00	\$0.00	\$0.00	\$0.00	(\$0.40)
	13	14	15	16	17	18	19
DAM ENERGY	\$193,295.29	\$194,445.79	\$167,831.68	\$165,416.06	\$157,997.64	\$97,486.94	\$111,418.83
DAM LOSSES	(\$332,310.22)	(\$344,782.59)	(\$287,950.95)	(\$288,544.42)	(\$270,343.01)	(\$163,230.82)	(\$181,155.54)
BALANCING ENERGY	(\$28,038.54)	(\$28,061.48)	(\$26,632.79)	(\$27,566.96)	(\$7,073.73)	(\$6,960.70)	(\$10,871.79)
BALANCING LOSSES	(\$10,199.45)	(\$1,776.87)	(\$7,845.50)	(\$6,182.69)	(\$16,983.58)	(\$3,064.61)	(\$3,656.44)
BALANCING CONGESTION	\$10,710.18	\$78,714.33	\$33,131.59	\$143,509.94	\$379,702.53	(\$65,346.60)	\$51,440.46
FINANCIAL IMPACT CHARGE	\$0.00	\$0.00	\$0.00	\$0.00	\$0.00	(\$5.86)	\$0.00
	20	21	22	23	24	25	26
DAM ENERGY	\$99,374.81	\$127,792.91	\$152,638.79	\$159,355.79	\$175,172.22	\$59,403.51	\$92,996.03
DAM LOSSES	(\$163,735.93)	(\$221,717.95)	(\$267,160.82)	(\$273,300.80)	(\$300,217.32)	(\$102,276.43)	(\$161,142.08)
BALANCING ENERGY	(\$9,052.63)	(\$552.95)	\$30,269.11	(\$14,081.94)	(\$14,606.31)	(\$5,550.78)	\$4,248.15
BALANCING LOSSES	(\$3,768.75)	(\$8,721.25)	(\$6,409.18)	(\$8,088.43)	(\$93.49)	\$5,233.44	(\$4,165.15)
BALANCING CONGESTION	(\$1,635.60)	\$23,041.06	(\$51,145.55)	\$280,336.86	(\$13,487.55)	\$267,939.38	\$3,445.94
FINANCIAL IMPACT CHARGE	\$0.00	\$0.00	\$0.00	\$0.00	\$0.00	\$0.00	\$0.00
	27	28	29	30	31		
DAM ENERGY	\$149,005.03	\$193,760.73	\$224,201.31	\$241,418.11	\$241,706.90		
DAM LOSSES	(\$250,147.26)	(\$329,666.11)	(\$381,775.83)	(\$410,085.20)	(\$421,140.52)		
BALANCING ENERGY	\$17,582.27	(\$21,707.79)	(\$11,671.70)	(\$4,439.57)	\$85,818.25		
BALANCING LOSSES	(\$7,527.91)	(\$10,501.38)	\$8,699.15	\$410.55	\$9,169.05		
BALANCING CONGESTION	\$132,284.65	\$351,171.25	\$280,740.55	\$47,806.03	\$266,994.21		
FINANCIAL IMPACT CHARGE	\$0.00	\$0.00	\$0.00	\$0.00	\$0.00		



SETTLEMENTS REPORT  
 May 2019 Settlement Adjustment  
 October 7, 2019

4-Month Settlement Adjustment – Market Residuals Analysis

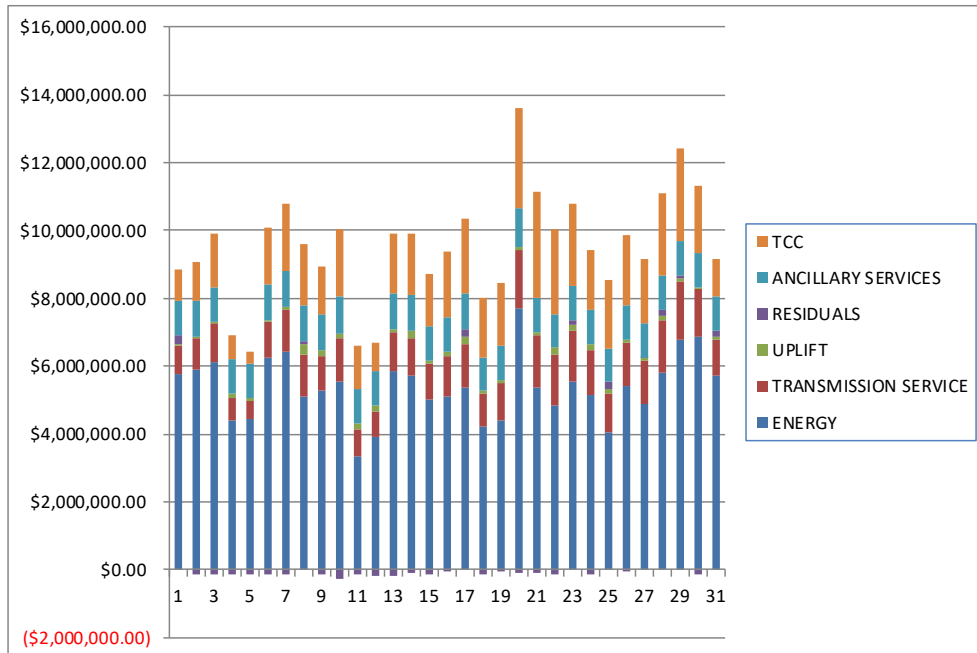
	MONDAY	TUESDAY	WEDNESDAY	THURSDAY	FRIDAY	SATURDAY	SUNDAY
			1	2	3	4	5
DAM ENERGY			\$176,987.87	\$189,604.00	\$191,662.50	\$131,987.21	\$160,810.50
DAM LOSSES			(\$319,348.05)	(\$342,977.59)	(\$345,773.87)	(\$228,092.09)	(\$276,390.62)
BALANCING ENERGY			(\$48,255.48)	(\$37,922.21)	(\$38,515.41)	(\$32,474.41)	(\$6,883.29)
BALANCING LOSSES			(\$8,149.45)	(\$12,873.05)	(\$9,262.46)	(\$19,205.97)	(\$8,220.83)
BALANCING CONGESTION			\$444,127.16	\$78,240.40	\$74,556.42	(\$6,546.30)	\$5,286.71
FINANCIAL IMPACT CHARGE			\$0.00	\$0.00	\$0.00	\$0.00	\$0.00
	6	7	8	9	10	11	12
DAM ENERGY	\$173,567.19	\$167,578.28	\$138,695.94	\$126,976.23	\$120,595.85	\$101,937.18	\$124,093.80
DAM LOSSES	(\$306,373.50)	(\$299,810.16)	(\$248,856.01)	(\$227,179.22)	(\$212,380.85)	(\$178,590.58)	(\$209,424.50)
BALANCING ENERGY	(\$19,566.27)	(\$16,731.47)	(\$11,367.73)	(\$14,484.13)	(\$21,229.02)	(\$34,989.02)	\$3,734.85
BALANCING LOSSES	(\$8,737.76)	(\$14,904.80)	(\$13,999.18)	(\$4,746.66)	(\$11,579.01)	(\$15,721.76)	(\$25,393.53)
BALANCING CONGESTION	\$11,566.46	\$2,942.97	\$217,512.51	\$67,210.07	(\$132,928.71)	(\$23,109.13)	(\$66,959.64)
FINANCIAL IMPACT CHARGE	\$0.00	\$0.00	\$0.00	\$0.00	\$0.00	\$0.00	(\$0.39)
	13	14	15	16	17	18	19
DAM ENERGY	\$193,295.28	\$194,445.79	\$167,831.68	\$165,416.06	\$157,997.65	\$97,486.94	\$111,418.84
DAM LOSSES	(\$332,310.22)	(\$344,782.59)	(\$287,950.95)	(\$288,544.42)	(\$270,343.01)	(\$163,230.82)	(\$181,155.54)
BALANCING ENERGY	(\$28,037.92)	(\$23,856.88)	(\$27,249.44)	(\$27,573.50)	(\$7,048.38)	(\$7,333.38)	(\$10,851.63)
BALANCING LOSSES	(\$10,085.45)	(\$1,135.08)	(\$7,731.70)	(\$6,057.51)	(\$16,621.40)	(\$3,088.86)	(\$3,654.77)
BALANCING CONGESTION	\$10,723.74	\$78,702.72	\$34,510.03	\$144,592.27	\$383,351.78	(\$69,909.36)	\$51,527.24
FINANCIAL IMPACT CHARGE	\$0.00	\$0.00	\$0.00	\$0.00	\$0.00	(\$5.91)	\$0.00
	20	21	22	23	24	25	26
DAM ENERGY	\$99,374.80	\$127,792.91	\$152,638.78	\$159,355.78	\$175,172.22	\$59,403.51	\$92,996.04
DAM LOSSES	(\$163,735.92)	(\$221,717.94)	(\$267,160.82)	(\$273,300.80)	(\$300,217.32)	(\$102,276.43)	(\$161,142.08)
BALANCING ENERGY	(\$9,447.60)	(\$3,213.46)	(\$18,110.29)	(\$13,886.65)	(\$14,600.19)	(\$5,598.56)	\$4,250.52
BALANCING LOSSES	(\$3,750.54)	(\$9,147.49)	(\$11,731.84)	(\$7,941.18)	\$74.20	\$5,119.61	(\$4,098.69)
BALANCING CONGESTION	(\$1,162.56)	\$21,940.18	(\$64,428.81)	\$281,748.11	(\$13,984.07)	\$270,510.09	\$3,418.01
FINANCIAL IMPACT CHARGE	\$0.00	\$0.00	\$0.00	\$0.00	\$0.00	\$0.00	\$0.00
	27	28	29	30	31		
DAM ENERGY	\$149,005.03	\$193,760.73	\$224,201.32	\$241,418.11	\$241,706.90		
DAM LOSSES	(\$250,147.26)	(\$329,666.12)	(\$381,775.82)	(\$410,085.20)	(\$421,140.52)		
BALANCING ENERGY	\$17,579.77	(\$22,128.27)	(\$12,247.96)	(\$5,166.63)	(\$16,491.99)		
BALANCING LOSSES	(\$7,317.68)	(\$10,347.17)	\$8,868.10	\$503.19	(\$4,333.07)		
BALANCING CONGESTION	\$132,127.06	\$350,950.27	\$282,237.00	\$47,558.79	\$211,081.03		
FINANCIAL IMPACT CHARGE	\$0.00	\$0.00	\$0.00	\$0.00	\$0.00		



SETTLEMENTS REPORT  
 May 2019 Settlement Adjustment  
 October 7, 2019

**Initial Settlement – Market Costs Analysis**

	MONDAY	TUESDAY	WEDNESDAY	THURSDAY	FRIDAY	SATURDAY	SUNDAY
			1	2	3	4	5
ENERGY			\$5,747,698.74	\$5,877,370.40	\$6,107,481.63	\$4,413,523.84	\$4,448,658.81
TRANSMISSION SERVICE			\$843,866.50	\$958,073.11	\$1,160,329.83	\$643,325.77	\$542,749.32
UPLIFT			\$67,186.69	\$34,296.05	\$26,856.59	\$117,202.69	\$48,690.53
RESIDUALS			\$244,976.16	(\$128,391.86)	(\$134,106.71)	(\$161,275.38)	(\$125,332.02)
ANCILLARY SERVICES			\$1,039,261.26	\$1,040,144.27	\$1,017,536.23	\$1,017,045.16	\$1,016,243.43
TCC			\$917,135.75	\$1,151,623.30	\$1,599,002.09	\$703,529.72	\$381,134.42
	6	7	8	9	10	11	12
ENERGY	\$6,248,987.82	\$6,422,784.91	\$5,107,653.80	\$5,284,209.36	\$5,560,561.36	\$3,348,643.74	\$3,896,033.03
TRANSMISSION SERVICE	\$1,072,586.61	\$1,247,205.93	\$1,229,000.76	\$1,032,567.85	\$1,285,108.60	\$808,182.64	\$763,153.60
UPLIFT	\$46,923.59	\$78,852.34	\$305,842.60	\$133,642.65	\$128,027.03	\$163,066.78	\$181,208.72
RESIDUALS	(\$150,543.79)	(\$161,694.12)	\$80,701.78	(\$120,217.10)	(\$259,152.39)	(\$151,440.02)	(\$175,084.49)
ANCILLARY SERVICES	\$1,040,606.57	\$1,057,503.38	\$1,060,153.05	\$1,059,556.55	\$1,084,936.81	\$1,001,371.21	\$1,011,226.68
TCC	\$1,673,964.97	\$1,966,551.41	\$1,812,017.95	\$1,408,812.56	\$1,989,042.73	\$1,294,129.92	\$857,352.65
	13	14	15	16	17	18	19
ENERGY	\$5,844,127.39	\$5,705,586.79	\$5,005,576.80	\$5,098,074.84	\$5,356,633.74	\$4,219,250.68	\$4,406,293.34
TRANSMISSION SERVICE	\$1,174,006.47	\$1,131,842.10	\$1,049,583.93	\$1,213,452.66	\$1,288,749.65	\$972,029.44	\$1,103,799.91
UPLIFT	\$87,836.95	\$211,964.77	\$126,581.60	\$121,027.87	\$207,109.86	\$104,613.13	\$83,010.63
RESIDUALS	(\$166,542.74)	(\$101,460.82)	(\$121,465.97)	(\$13,368.07)	\$243,299.85	(\$141,121.65)	(\$32,824.48)
ANCILLARY SERVICES	\$1,042,444.34	\$1,035,652.99	\$1,002,124.91	\$986,793.96	\$1,036,411.76	\$949,811.53	\$991,532.24
TCC	\$1,764,711.92	\$1,831,265.37	\$1,522,715.32	\$1,942,591.45	\$2,219,277.38	\$1,755,591.32	\$1,855,118.79
	20	21	22	23	24	25	26
ENERGY	\$7,714,747.13	\$5,389,794.89	\$4,846,998.25	\$5,538,603.79	\$5,132,073.62	\$4,064,948.98	\$5,404,978.03
TRANSMISSION SERVICE	\$1,709,485.97	\$1,537,364.83	\$1,484,975.38	\$1,517,201.69	\$1,317,189.69	\$1,142,535.31	\$1,286,166.48
UPLIFT	\$102,880.09	\$86,553.44	\$226,178.02	\$148,287.89	\$186,316.33	\$117,914.81	\$87,994.43
RESIDUALS	(\$78,818.10)	(\$80,158.18)	(\$141,807.65)	\$144,221.48	(\$153,232.45)	\$224,749.12	(\$64,617.11)
ANCILLARY SERVICES	\$1,114,328.23	\$988,924.68	\$960,167.88	\$1,000,048.26	\$1,018,841.34	\$946,956.51	\$1,010,498.16
TCC	\$2,989,737.78	\$3,152,695.06	\$2,518,596.72	\$2,451,145.32	\$1,751,859.99	\$2,028,816.49	\$2,081,023.61
	27	28	29	30	31		
ENERGY	\$4,884,386.54	\$5,788,324.70	\$6,774,863.44	\$6,884,417.37	\$5,739,773.62		
TRANSMISSION SERVICE	\$1,258,588.91	\$1,575,705.20	\$1,702,796.27	\$1,375,804.07	\$1,032,658.72		
UPLIFT	\$85,784.11	\$109,756.50	\$89,915.33	\$79,276.32	\$89,927.67		
RESIDUALS	\$41,196.78	\$183,056.70	\$120,193.48	(\$124,890.08)	\$182,547.89		
ANCILLARY SERVICES	\$984,453.30	\$1,032,245.82	\$1,018,187.07	\$1,007,990.28	\$1,014,367.55		
TCC	\$1,893,228.36	\$2,399,475.54	\$2,732,276.53	\$1,988,513.86	\$1,099,623.22		



SETTLEMENTS REPORT  
 May 2019 Settlement Adjustment  
 October 7, 2019

4-Month Settlement Adjustment – Market Costs Analysis

	MONDAY	TUESDAY	WEDNESDAY	THURSDAY	FRIDAY	SATURDAY	SUNDAY
			1	2	3	4	5
ENERGY			\$5,763,061.99	\$5,873,629.08	\$6,099,692.05	\$4,405,862.34	\$4,447,683.65
TRANSMISSION SERVICE			\$844,143.48	\$957,241.25	\$1,159,307.75	\$642,260.22	\$541,821.36
UPLIFT			\$67,184.24	\$34,241.12	\$26,857.30	\$117,202.70	\$48,690.40
RESIDUALS			\$245,362.05	(\$125,928.45)	(\$127,332.82)	(\$154,331.56)	(\$125,397.53)
ANCILLARY SERVICES			\$1,039,724.21	\$1,038,174.72	\$1,016,063.94	\$1,010,938.10	\$1,016,316.42
TCC			\$918,976.16	\$1,153,852.99	\$1,600,315.11	\$709,415.95	\$381,134.42
	6	7	8	9	10	11	12
ENERGY	\$6,246,545.28	\$6,422,388.40	\$5,110,499.02	\$5,216,167.81	\$5,557,529.38	\$3,346,804.84	\$3,894,668.88
TRANSMISSION SERVICE	\$1,071,787.40	\$1,246,394.92	\$1,228,330.49	\$1,031,716.16	\$1,284,338.68	\$807,463.12	\$762,372.89
UPLIFT	\$46,932.17	\$78,857.56	\$306,025.47	\$134,482.05	\$128,027.02	\$163,066.78	\$181,208.70
RESIDUALS	(\$149,543.88)	(\$160,925.18)	\$81,985.53	(\$52,223.71)	(\$257,521.74)	(\$150,473.31)	(\$173,949.41)
ANCILLARY SERVICES	\$1,040,858.28	\$1,057,775.66	\$1,060,670.78	\$1,054,586.62	\$1,080,990.33	\$994,450.36	\$1,002,954.04
TCC	\$1,673,964.97	\$1,966,551.41	\$1,812,017.95	\$1,413,980.82	\$1,993,302.82	\$1,301,439.75	\$865,933.29
	13	14	15	16	17	18	19
ENERGY	\$5,843,854.15	\$5,702,053.50	\$5,004,062.23	\$5,097,451.84	\$5,353,114.99	\$4,223,963.50	\$4,405,575.97
TRANSMISSION SERVICE	\$1,173,391.99	\$1,131,037.69	\$1,048,781.49	\$1,212,594.90	\$1,288,117.41	\$971,329.60	\$1,103,088.65
UPLIFT	\$87,836.94	\$211,966.33	\$126,576.13	\$120,990.21	\$207,109.97	\$104,639.36	\$83,054.46
RESIDUALS	(\$166,414.57)	(\$96,626.04)	(\$120,590.38)	(\$12,167.10)	\$247,336.64	(\$146,081.39)	(\$32,715.86)
ANCILLARY SERVICES	\$1,036,743.09	\$1,027,678.83	\$1,000,386.73	\$985,119.61	\$1,033,448.30	\$938,048.12	\$982,271.13
TCC	\$1,770,977.65	\$1,839,484.34	\$1,524,732.76	\$1,944,470.14	\$2,222,785.78	\$1,767,809.01	\$1,864,790.40
	20	21	22	23	24	25	26
ENERGY	\$7,716,971.66	\$5,397,026.12	\$4,919,305.34	\$5,537,556.02	\$5,133,572.87	\$4,089,922.13	\$5,405,195.35
TRANSMISSION SERVICE	\$1,708,961.23	\$1,536,835.73	\$1,488,288.11	\$1,516,581.04	\$1,316,591.88	\$1,143,152.10	\$1,285,536.35
UPLIFT	\$102,881.46	\$86,553.45	\$226,207.90	\$148,248.18	\$186,316.36	\$117,914.85	\$87,994.42
RESIDUALS	(\$78,721.82)	(\$84,345.80)	(\$208,792.98)	\$145,975.26	(\$153,555.16)	\$227,158.22	(\$64,576.20)
ANCILLARY SERVICES	\$1,119,321.42	\$977,439.01	\$958,822.69	\$991,366.70	\$1,005,785.09	\$932,983.93	\$995,643.10
TCC	\$2,985,482.33	\$3,164,847.85	\$2,525,567.75	\$2,460,391.80	\$1,765,530.87	\$2,045,740.24	\$2,096,439.47
	27	28	29	30	31		
ENERGY	\$4,885,573.36	\$5,797,916.75	\$6,774,751.28	\$6,885,803.40	\$5,912,879.30		
TRANSMISSION SERVICE	\$1,257,981.62	\$1,575,341.57	\$1,702,158.32	\$1,375,284.05	\$1,036,090.86		
UPLIFT	\$85,784.11	\$109,745.97	\$89,915.33	\$79,276.34	\$89,927.93		
RESIDUALS	\$41,246.92	\$182,569.44	\$121,282.64	(\$125,771.74)	\$10,822.35		
ANCILLARY SERVICES	\$974,593.95	\$1,026,038.75	\$1,013,656.97	\$1,004,339.12	\$1,020,531.87		
TCC	\$1,903,683.06	\$2,406,743.38	\$2,737,371.16	\$1,992,901.65	\$1,100,223.62		

