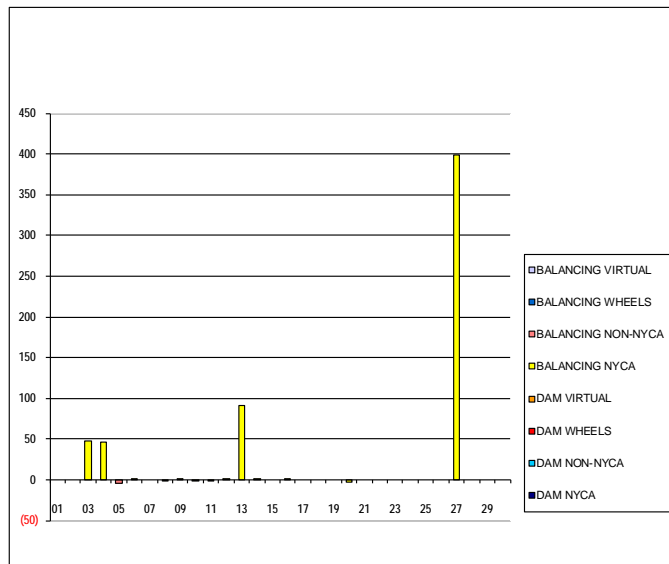


SETTLEMENTS REPORT  
 September 2019 Settlement Adjustment  
 October 7, 2019

Initial – Market Supply Delta Analysis

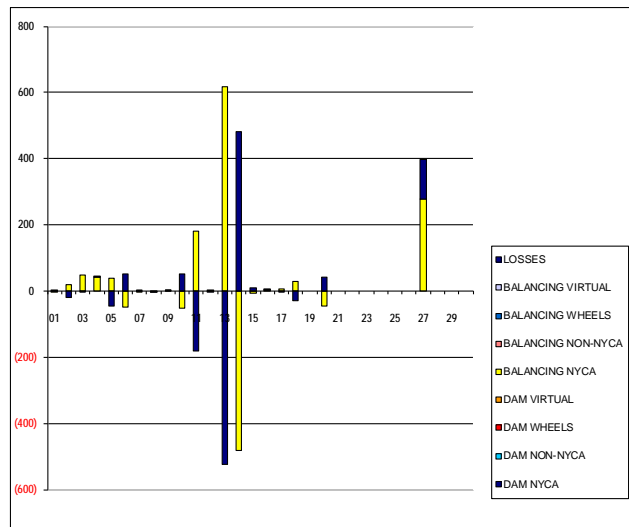
	MONDAY	TUESDAY	WEDNESDAY	THURSDAY	FRIDAY	SATURDAY	SUNDAY
DAM NYCA							1
DAM NON-NYCA							0
DAM WHEELS							0
DAM VIRTUAL							0
BALANCING NYCA							0
BALANCING NON-NYCA							0
BALANCING WHEELS							0
BALANCING VIRTUAL							0
	2	3	4	5	6	7	8
DAM NYCA	0	0	0	0	0	0	0
DAM NON-NYCA	0	0	0	0	0	0	0
DAM WHEELS	0	0	0	0	0	0	0
DAM VIRTUAL	0	0	0	0	0	0	0
BALANCING NYCA	0	47	46	0	1	0	(0)
BALANCING NON-NYCA	0	0	0	(5)	0	0	0
BALANCING WHEELS	0	0	0	0	0	0	0
BALANCING VIRTUAL	0	0	0	0	0	0	0
	9	10	11	12	13	14	15
DAM NYCA	0	0	0	0	0	0	0
DAM NON-NYCA	0	0	0	0	0	0	0
DAM WHEELS	0	0	0	0	0	0	0
DAM VIRTUAL	0	0	0	0	0	0	0
BALANCING NYCA	0	(1)	(1)	0	91	0	0
BALANCING NON-NYCA	0	0	0	0	0	0	0
BALANCING WHEELS	0	0	0	0	0	0	0
BALANCING VIRTUAL	0	0	0	0	0	0	0
	16	17	18	19	20	21	22
DAM NYCA	0	0	0	0	0	0	0
DAM NON-NYCA	0	0	0	0	0	0	0
DAM WHEELS	0	0	0	0	0	0	0
DAM VIRTUAL	0	0	0	0	0	0	0
BALANCING NYCA	1	0	0	0	(4)	0	0
BALANCING NON-NYCA	0	0	0	0	0	0	0
BALANCING WHEELS	0	0	0	0	0	0	0
BALANCING VIRTUAL	0	0	0	0	0	0	0
	23	24	25	26	27	28	29
DAM NYCA	0	0	0	0	0	0	0
DAM NON-NYCA	0	0	0	0	0	0	0
DAM WHEELS	0	0	0	0	0	0	0
DAM VIRTUAL	0	0	0	0	0	0	0
BALANCING NYCA	0	0	0	0	398	0	0
BALANCING NON-NYCA	0	0	0	0	0	0	0
BALANCING WHEELS	0	0	0	0	0	0	0
BALANCING VIRTUAL	0	0	0	0	0	0	0
	30						
DAM NYCA	0						
DAM NON-NYCA	0						
DAM WHEELS	0						
DAM VIRTUAL	0						
BALANCING NYCA	0						
BALANCING NON-NYCA	0						
BALANCING WHEELS	0						
BALANCING VIRTUAL	0						



SETTLEMENTS REPORT  
September 2019 Settlement Adjustment  
October 7, 2019

Initial – Market Withdrawals Delta Analysis

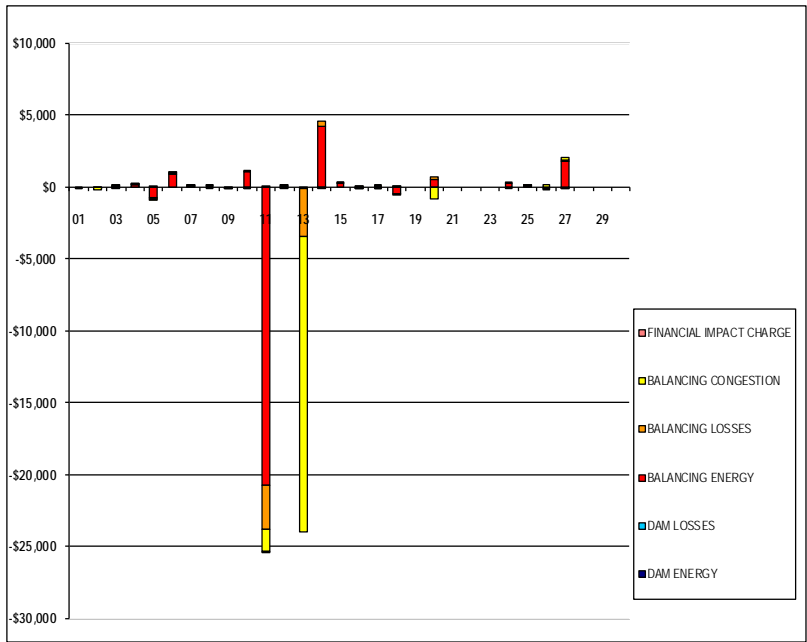
	MONDAY	TUESDAY	WEDNESDAY	THURSDAY	FRIDAY	SATURDAY	SUNDAY
DAM NYCA							1
DAM NON-NYCA							0
DAM WHEELS							0
DAM VIRTUAL							0
BALANCING NYCA							(0)
BALANCING NON-NYCA							0
BALANCING WHEELS							0
BALANCING VIRTUAL							0
UFE/LOSSES							0
DAM NYCA	2	3	4	5	6	7	8
DAM NON-NYCA	0	0	0	0	0	0	0
DAM WHEELS	0	0	0	0	0	0	0
DAM VIRTUAL	0	0	0	0	0	0	0
BALANCING NYCA	20	47	43	40	(49)	(0)	(0)
BALANCING NON-NYCA	0	0	0	0	0	0	0
BALANCING WHEELS	0	0	0	0	0	0	0
BALANCING VIRTUAL	0	0	0	0	0	0	0
UFE/LOSSES	(20)	(0)	3	(45)	50	0	(0)
DAM NYCA	9	10	11	12	13	14	15
DAM NON-NYCA	0	0	0	0	0	0	0
DAM WHEELS	0	0	0	0	0	0	0
DAM VIRTUAL	0	0	0	0	0	0	0
BALANCING NYCA	0	(53)	181	0	617	(482)	(8)
BALANCING NON-NYCA	0	0	0	0	0	0	0
BALANCING WHEELS	0	0	0	0	0	0	0
BALANCING VIRTUAL	0	0	0	0	0	0	0
UFE/LOSSES	0	52	(182)	(0)	(525)	482	8
DAM NYCA	16	17	18	19	20	21	22
DAM NON-NYCA	0	0	0	0	0	0	0
DAM WHEELS	0	0	0	0	0	0	0
DAM VIRTUAL	0	0	0	0	0	0	0
BALANCING NYCA	1	5	28	0	(45)	0	0
BALANCING NON-NYCA	0	0	0	0	0	0	0
BALANCING WHEELS	0	0	0	0	0	0	0
BALANCING VIRTUAL	0	0	0	0	0	0	0
UFE/LOSSES	0	(5)	(28)	0	41	0	0
DAM NYCA	23	24	25	26	27	28	29
DAM NON-NYCA	0	0	0	0	0	0	0
DAM WHEELS	0	0	0	0	0	0	0
DAM VIRTUAL	0	0	0	0	0	0	0
BALANCING NYCA	0	0	0	0	277	0	0
BALANCING NON-NYCA	0	0	0	0	0	0	0
BALANCING WHEELS	0	0	0	0	0	0	0
BALANCING VIRTUAL	0	0	0	0	0	0	0
UFE/LOSSES	0	0	0	0	121	0	0
DAM NYCA	30						
DAM NON-NYCA	0						
DAM WHEELS	0						
DAM VIRTUAL	0						
BALANCING NYCA	0						
BALANCING NON-NYCA	0						
BALANCING WHEELS	0						
BALANCING VIRTUAL	0						
UFE/LOSSES	0						



SETTLEMENTS REPORT  
September 2019 Settlement Adjustment  
October 7, 2019

Initial – Market Residuals Delta Analysis

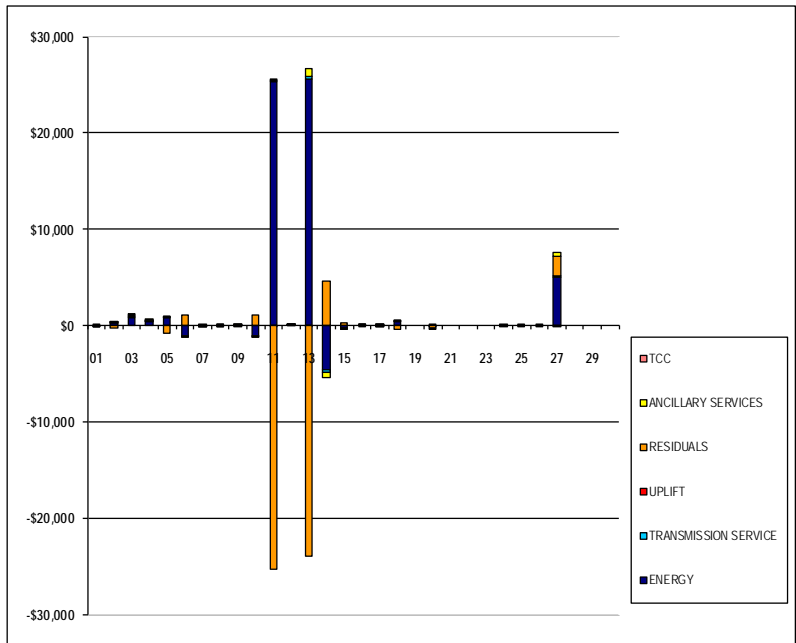
	MONDAY	TUESDAY	WEDNESDAY	THURSDAY	FRIDAY	SATURDAY	SUNDAY
							1
DAM ENERGY							\$0.00
DAM LOSSES							\$0.00
BALANCING ENERGY							(\$0.54)
BALANCING LOSSES							\$0.00
BALANCING CONGESTION							(\$0.65)
FINANCIAL IMPACT CHARGE							\$0.00
	2	3	4	5	6	7	8
DAM ENERGY	\$0.00	\$0.00	\$0.01	\$0.01	\$0.00	\$0.01	\$0.00
DAM LOSSES	(\$0.01)	\$0.00	\$0.00	\$0.00	\$0.00	\$0.00	(\$0.01)
BALANCING ENERGY	(\$45.34)	(\$0.54)	\$100.30	(\$767.70)	\$844.12	\$0.93	\$18.06
BALANCING LOSSES	(\$3.51)	\$11.50	\$13.09	(\$53.35)	\$79.09	\$0.12	\$3.00
BALANCING CONGESTION	(\$187.50)	\$127.27	\$27.64	(\$50.55)	\$155.02	\$18.56	\$109.07
FINANCIAL IMPACT CHARGE	\$0.00	\$0.00	\$0.00	\$0.00	\$0.00	\$0.00	\$0.00
	9	10	11	12	13	14	15
DAM ENERGY	\$0.00	(\$0.01)	\$0.01	\$0.00	\$0.00	\$0.00	\$0.00
DAM LOSSES	(\$0.01)	\$0.00	\$0.00	\$0.00	(\$0.01)	\$0.01	\$0.00
BALANCING ENERGY	(\$0.08)	\$1,059.94	(\$20,752.04)	\$81.87	(\$168.21)	\$4,212.47	\$196.45
BALANCING LOSSES	\$0.00	(\$11.20)	(\$3,097.31)	\$2.48	(\$3,342.20)	\$376.43	\$25.92
BALANCING CONGESTION	(\$0.55)	\$20.93	(\$1,495.31)	(\$82.67)	(\$20,525.01)	(\$1.63)	\$6.42
FINANCIAL IMPACT CHARGE	\$0.00	\$0.00	(\$0.02)	\$0.00	\$0.00	\$0.00	\$0.00
	16	17	18	19	20	21	22
DAM ENERGY	\$0.01	(\$0.01)	\$0.00	\$0.00	\$0.00	\$0.00	\$0.00
DAM LOSSES	(\$0.01)	(\$0.01)	\$0.01	\$0.00	\$0.00	\$0.00	\$0.00
BALANCING ENERGY	(\$0.88)	(\$9.31)	(\$451.59)	\$0.00	\$524.24	\$0.00	\$0.00
BALANCING LOSSES	\$0.46	\$11.27	(\$18.47)	\$0.00	\$114.15	\$0.00	\$0.00
BALANCING CONGESTION	(\$0.66)	\$0.18	\$23.03	\$0.00	(\$845.85)	\$0.00	\$0.00
FINANCIAL IMPACT CHARGE	\$0.00	\$0.00	\$0.00	\$0.00	\$0.00	\$0.00	\$0.00
	23	24	25	26	27	28	29
DAM ENERGY	\$0.00	\$0.00	\$0.00	\$0.00	(\$0.01)	\$0.00	\$0.00
DAM LOSSES	\$0.00	\$0.00	\$0.00	\$0.00	(\$0.01)	\$0.00	\$0.00
BALANCING ENERGY	\$0.00	\$224.88	\$71.27	(\$177.40)	\$1,779.29	\$0.00	\$0.00
BALANCING LOSSES	\$0.00	\$23.05	\$2.28	(\$23.87)	\$73.48	\$0.00	\$0.00
BALANCING CONGESTION	\$0.00	(\$69.48)	\$68.49	\$172.97	\$159.59	\$0.00	\$0.00
FINANCIAL IMPACT CHARGE	\$0.00	\$0.00	\$0.00	\$0.00	\$0.00	\$0.00	\$0.00
	30						
DAM ENERGY	\$0.00						
DAM LOSSES	\$0.00						
BALANCING ENERGY	\$0.00						
BALANCING LOSSES	\$0.00						
BALANCING CONGESTION	\$0.00						
FINANCIAL IMPACT CHARGE	\$0.00						



SETTLEMENTS REPORT  
 September 2019 Settlement Adjustment  
 October 7, 2019

Initial – Market Costs Delta Analysis

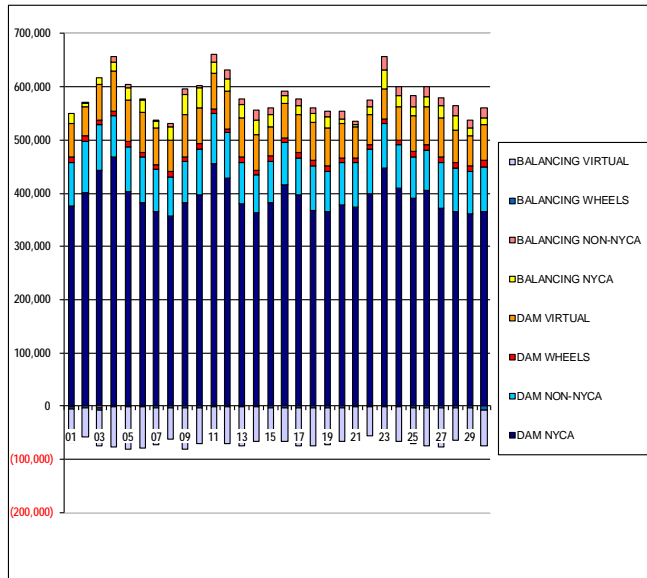
	MONDAY	TUESDAY	WEDNESDAY	THURSDAY	FRIDAY	SATURDAY	SUNDAY
ENERGY							1
TRANSMISSION SERVICE							\$1.28
UPLIFT							(\$0.06)
RESIDUALS							\$0.00
ANCILLARY SERVICES							(\$1.19)
TCC							(\$0.12)
							\$0.00
	2	3	4	5	6	7	8
ENERGY	\$236.18	\$862.48	\$388.87	\$815.50	(\$1,069.70)	(\$19.56)	\$42.01
TRANSMISSION SERVICE	\$10.46	\$24.57	\$22.41	\$20.72	(\$25.74)	(\$0.04)	(\$0.06)
UPLIFT	\$0.00	\$0.00	\$0.00	\$0.00	\$0.00	\$0.01	\$0.00
RESIDUALS	(\$236.36)	\$138.23	\$141.04	(\$671.59)	\$1,078.23	\$19.62	\$130.12
ANCILLARY SERVICES	\$23.56	\$69.51	\$64.36	\$45.16	(\$57.58)	(\$0.08)	(\$0.18)
TCC	\$0.00	\$0.00	\$0.00	\$0.00	\$0.00	\$0.00	\$0.00
	9	10	11	12	13	14	15
ENERGY	\$3.22	(\$1,092.34)	\$25,336.48	\$10.99	\$25,608.28	(\$4,588.18)	(\$228.85)
TRANSMISSION SERVICE	\$0.03	(\$27.67)	\$94.20	\$0.10	\$320.61	(\$250.60)	(\$4.16)
UPLIFT	\$0.00	\$0.01	(\$0.01)	\$0.01	(\$0.01)	\$0.00	\$0.00
RESIDUALS	(\$0.64)	\$1,069.66	(\$25,344.67)	\$1.68	(\$24,035.43)	\$4,587.28	\$228.79
ANCILLARY SERVICES	\$0.07	(\$78.25)	\$211.98	\$0.59	\$749.46	(\$564.34)	(\$9.37)
TCC	\$0.00	\$0.00	\$0.00	\$0.00	\$0.00	\$0.00	\$0.00
	16	17	18	19	20	21	22
ENERGY	\$22.48	(\$2.20)	\$447.04	\$0.00	\$151.84	\$0.00	\$0.00
TRANSMISSION SERVICE	\$0.76	\$2.60	\$14.60	\$0.00	(\$23.29)	\$0.00	\$0.00
UPLIFT	\$0.00	(\$0.02)	\$0.00	\$0.00	(\$0.01)	\$0.00	\$0.00
RESIDUALS	(\$1.08)	\$2.12	(\$447.02)	\$0.00	(\$207.46)	\$0.00	\$0.00
ANCILLARY SERVICES	\$2.13	\$5.84	\$32.85	\$0.00	(\$53.53)	\$0.00	\$0.00
TCC	\$0.00	\$0.00	\$0.00	\$0.00	\$0.00	\$0.00	\$0.00
	23	24	25	26	27	28	29
ENERGY	\$0.00	(\$178.56)	(\$141.94)	\$28.44	\$4,996.37	\$0.00	\$0.00
TRANSMISSION SERVICE	\$0.00	\$0.00	\$0.00	\$0.00	\$143.92	\$0.00	\$0.00
UPLIFT	\$0.00	\$0.00	\$0.00	\$0.00	(\$0.01)	\$0.00	\$0.00
RESIDUALS	\$0.00	\$178.45	\$142.04	(\$28.30)	\$2,012.34	\$0.00	\$0.00
ANCILLARY SERVICES	\$0.00	\$0.00	\$0.00	\$0.00	\$443.55	\$0.00	\$0.00
TCC	\$0.00	\$0.00	\$0.00	\$0.00	\$0.00	\$0.00	\$0.00
	30						
ENERGY	\$0.00						
TRANSMISSION SERVICE	\$0.00						
UPLIFT	\$0.00						
RESIDUALS	\$0.00						
ANCILLARY SERVICES	\$0.00						
TCC	\$0.00						



SETTLEMENTS REPORT  
September 2019 Settlement Adjustment  
October 7, 2019

Weekly Settlement – Market Supply Analysis

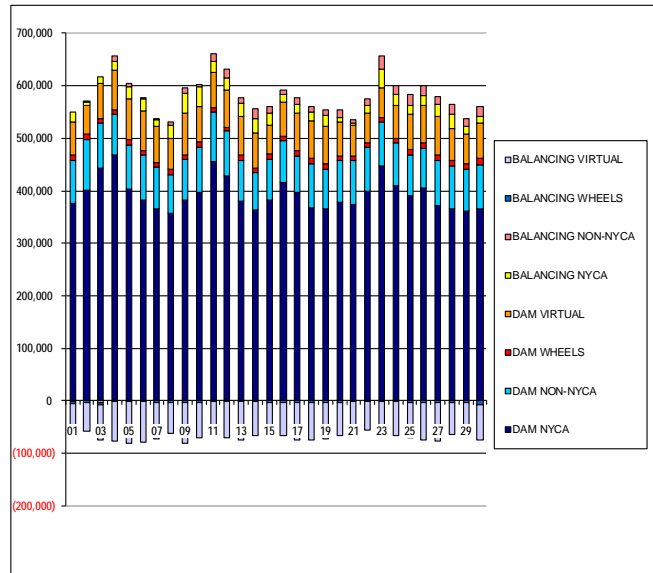
	MONDAY	TUESDAY	WEDNESDAY	THURSDAY	FRIDAY	SATURDAY	SUNDAY
							1
DAM NYCA							375,692
DAM NON-NYCA							82,529
DAM WHEELS							9,907
DAM VIRTUAL							63,545
BALANCING NYCA							19,372
BALANCING NON-NYCA							(1,836)
BALANCING WHEELS							(2,707)
BALANCING VIRTUAL							(63,545)
	2	3	4	5	6	7	8
DAM NYCA	402,280	442,474	468,082	404,162	382,585	365,560	357,409
DAM NON-NYCA	95,890	86,048	77,490	83,996	84,940	78,959	73,028
DAM WHEELS	9,587	9,770	8,526	8,936	9,118	9,613	10,062
DAM VIRTUAL	54,868	66,919	75,566	78,137	76,502	69,057	58,916
BALANCING NYCA	6,184	12,142	15,965	23,640	22,420	12,917	26,211
BALANCING NON-NYCA	431	(2,402)	12,292	5,088	962	1,524	5,688
BALANCING WHEELS	(2,362)	(4,970)	(1,326)	(1,736)	(1,918)	(2,413)	(2,862)
BALANCING VIRTUAL	(54,868)	(66,919)	(75,566)	(78,137)	(76,502)	(69,057)	(58,916)
	9	10	11	12	13	14	15
DAM NYCA	383,267	397,579	456,619	428,495	381,162	364,055	382,321
DAM NON-NYCA	76,304	85,263	94,353	85,309	77,293	71,238	77,927
DAM WHEELS	9,417	9,613	7,459	7,488	9,117	8,813	9,810
DAM VIRTUAL	78,268	67,757	66,799	69,817	73,105	65,435	55,875
BALANCING NYCA	37,804	37,410	20,288	24,148	25,256	28,601	22,399
BALANCING NON-NYCA	11,080	4,906	16,423	15,897	12,296	17,769	11,545
BALANCING WHEELS	(2,217)	(2,413)	(184)	(288)	(1,917)	(1,613)	(2,610)
BALANCING VIRTUAL	(78,268)	(67,757)	(66,799)	(69,817)	(73,105)	(65,435)	(55,875)
	16	17	18	19	20	21	22
DAM NYCA	416,061	396,248	367,037	365,196	378,558	373,464	399,785
DAM NON-NYCA	78,974	69,003	84,809	76,530	78,631	83,669	83,835
DAM WHEELS	9,698	11,167	10,257	9,614	9,560	8,919	8,327
DAM VIRTUAL	63,165	71,041	71,347	70,599	63,655	58,091	55,359
BALANCING NYCA	15,940	17,306	15,604	21,686	9,294	5,856	14,382
BALANCING NON-NYCA	8,239	11,580	10,751	10,299	14,219	4,675	13,926
BALANCING WHEELS	(2,498)	(3,967)	(3,057)	(2,414)	(2,360)	(1,694)	(1,127)
BALANCING VIRTUAL	(63,165)	(71,041)	(71,347)	(70,599)	(63,655)	(58,091)	(55,359)
	23	24	25	26	27	28	29
DAM NYCA	447,875	410,589	390,856	406,063	372,075	365,765	361,984
DAM NON-NYCA	82,785	80,242	78,038	74,321	84,894	82,523	79,179
DAM WHEELS	8,559	9,125	10,554	10,597	11,058	10,141	9,517
DAM VIRTUAL	57,472	63,591	67,149	70,785	73,643	61,186	57,521
BALANCING NYCA	34,703	20,282	16,769	20,617	23,185	26,520	15,422
BALANCING NON-NYCA	24,577	16,571	20,106	18,620	13,763	19,193	14,871
BALANCING WHEELS	(1,359)	(1,875)	(3,354)	(3,397)	(3,858)	(2,941)	(2,317)
BALANCING VIRTUAL	(57,472)	(63,591)	(67,149)	(70,785)	(73,643)	(61,186)	(57,521)
	30						
DAM NYCA	364,953						
DAM NON-NYCA	85,365						
DAM WHEELS	11,509						
DAM VIRTUAL	66,968						
BALANCING NYCA	12,387						
BALANCING NON-NYCA	19,128						
BALANCING WHEELS	(8,185)						
BALANCING VIRTUAL	(66,968)						



SETTLEMENTS REPORT  
September 2019 Settlement Adjustment  
October 7, 2019

Initial Settlement Adjustment – Market Supply Analysis

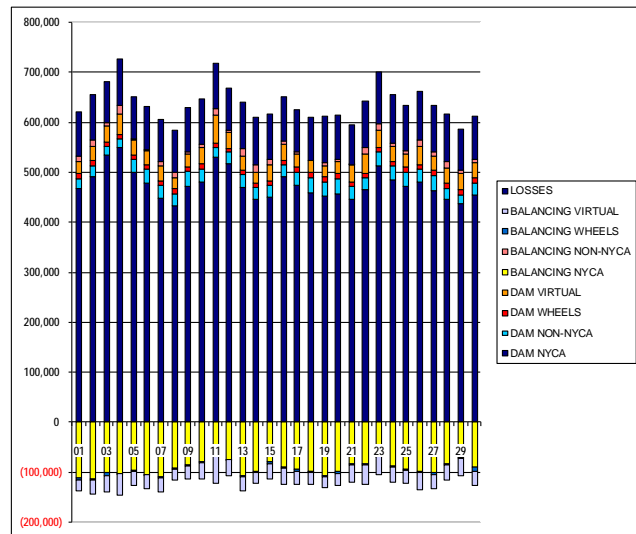
	MONDAY	TUESDAY	WEDNESDAY	THURSDAY	FRIDAY	SATURDAY	SUNDAY
							1
DAM NYCA							375,692
DAM NON-NYCA							82,529
DAM WHEELS							9,907
DAM VIRTUAL							63,545
BALANCING NYCA							19,372
BALANCING NON-NYCA							(1,836)
BALANCING WHEELS							(2,707)
BALANCING VIRTUAL							(63,545)
	2	3	4	5	6	7	8
DAM NYCA	402,280	442,474	468,082	404,162	382,585	365,560	357,409
DAM NON-NYCA	95,890	86,048	77,490	83,996	84,940	78,959	73,028
DAM WHEELS	9,587	9,770	8,526	8,936	9,118	9,513	10,062
DAM VIRTUAL	54,868	66,919	75,566	78,137	76,502	69,057	58,916
BALANCING NYCA	6,184	12,189	16,012	23,640	22,421	12,917	26,211
BALANCING NON-NYCA	431	(2,402)	12,292	5,083	962	1,524	5,688
BALANCING WHEELS	(2,362)	(4,970)	(1,326)	(1,736)	(1,918)	(2,413)	(2,862)
BALANCING VIRTUAL	(54,868)	(66,919)	(75,566)	(78,137)	(76,502)	(69,057)	(58,916)
	9	10	11	12	13	14	15
DAM NYCA	383,267	397,579	456,619	428,495	381,162	364,055	382,321
DAM NON-NYCA	76,304	85,263	94,353	85,309	77,293	71,238	77,927
DAM WHEELS	9,417	9,613	7,459	7,488	9,117	8,813	9,810
DAM VIRTUAL	78,268	67,757	66,799	69,817	73,105	65,435	55,875
BALANCING NYCA	37,804	37,409	20,287	24,148	25,347	28,601	22,399
BALANCING NON-NYCA	11,080	4,906	16,423	15,897	12,296	17,769	11,545
BALANCING WHEELS	(2,217)	(2,413)	(184)	(288)	(1,917)	(1,613)	(2,610)
BALANCING VIRTUAL	(78,268)	(67,757)	(66,799)	(69,817)	(73,105)	(65,435)	(55,875)
	16	17	18	19	20	21	22
DAM NYCA	416,061	396,248	367,037	365,196	378,558	373,464	399,785
DAM NON-NYCA	78,974	69,003	84,809	76,530	78,631	83,669	83,035
DAM WHEELS	9,698	11,167	10,257	9,614	9,560	8,919	8,327
DAM VIRTUAL	63,165	71,041	71,347	70,599	63,655	58,091	55,359
BALANCING NYCA	15,941	17,306	15,604	21,686	9,291	5,856	14,382
BALANCING NON-NYCA	8,239	11,580	10,751	10,299	14,219	4,675	13,926
BALANCING WHEELS	(2,498)	(3,967)	(3,057)	(2,414)	(2,360)	(1,694)	(1,127)
BALANCING VIRTUAL	(63,165)	(71,041)	(71,347)	(70,599)	(63,655)	(58,091)	(55,359)
	23	24	25	26	27	28	29
DAM NYCA	447,875	410,589	390,856	406,063	372,075	365,765	361,984
DAM NON-NYCA	82,785	80,242	78,038	74,321	84,894	82,523	79,179
DAM WHEELS	8,559	9,125	10,554	10,597	11,058	10,141	9,517
DAM VIRTUAL	57,472	63,591	67,149	70,785	73,643	61,186	57,521
BALANCING NYCA	34,703	20,282	16,769	20,617	23,584	26,520	15,422
BALANCING NON-NYCA	24,577	16,571	20,106	18,620	13,763	19,193	14,871
BALANCING WHEELS	(1,359)	(1,875)	(3,354)	(3,397)	(3,858)	(2,941)	(2,317)
BALANCING VIRTUAL	(57,472)	(63,591)	(67,149)	(70,785)	(73,643)	(61,186)	(57,521)
	30						
DAM NYCA	364,953						
DAM NON-NYCA	85,365						
DAM WHEELS	11,509						
DAM VIRTUAL	66,968						
BALANCING NYCA	12,387						
BALANCING NON-NYCA	19,128						
BALANCING WHEELS	(8,185)						
BALANCING VIRTUAL	(66,968)						



SETTLEMENTS REPORT  
September 2019 Settlement Adjustment  
October 7, 2019

Weekly Settlement – Market Withdrawals Analysis

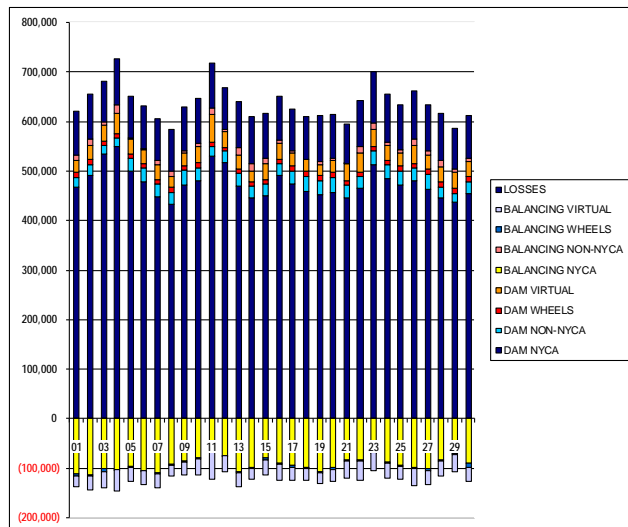
	MONDAY	TUESDAY	WEDNESDAY	THURSDAY	FRIDAY	SATURDAY	SUNDAY
DAM NYCA							1
DAM NON-NYCA							467,159
DAM WHEELS							19,909
DAM VIRTUAL							9,907
BALANCING NYCA							23,542
BALANCING NON-NYCA							(112,484)
BALANCING WHEELS							11,395
BALANCING VIRTUAL							(2,707)
UFE/LOSSES							(23,542)
	2	3	4	5	6	7	8
DAM NYCA	491,370	533,438	548,612	500,848	478,535	447,306	433,614
DAM NON-NYCA	22,048	17,980	18,512	25,685	27,708	26,304	23,599
DAM WHEELS	9,587	9,770	8,526	8,936	9,118	9,613	10,062
DAM VIRTUAL	28,252	32,539	41,855	28,674	27,149	28,775	21,267
BALANCING NYCA	(113,213)	(101,847)	(102,228)	(96,804)	(104,239)	(109,257)	(91,570)
BALANCING NON-NYCA	13,445	6,127	15,385	2,176	3,437	10,536	10,332
BALANCING WHEELS	(2,362)	(4,970)	(1,326)	(1,736)	(1,918)	(2,413)	(2,862)
BALANCING VIRTUAL	(28,252)	(32,539)	(41,855)	(28,674)	(27,149)	(28,775)	(21,267)
UFE/LOSSES	91,134	82,565	93,548	84,981	85,466	84,070	86,361
	9	10	11	12	13	14	15
DAM NYCA	472,080	481,361	530,740	516,346	468,864	444,840	450,845
DAM NON-NYCA	29,067	25,482	19,868	24,249	26,274	25,467	22,427
DAM WHEELS	9,417	9,613	7,459	7,488	9,117	8,813	9,810
DAM VIRTUAL	25,983	32,419	55,477	32,557	27,235	20,682	31,737
BALANCING NYCA	(86,246)	(78,668)	(67,082)	(75,229)	(108,188)	(99,183)	(80,309)
BALANCING NON-NYCA	4,978	7,420	14,807	4,454	15,451	14,416	9,975
BALANCING WHEELS	(2,171)	(2,413)	(184)	(288)	(1,917)	(1,613)	(2,610)
BALANCING VIRTUAL	(25,983)	(32,419)	(55,477)	(32,557)	(27,235)	(20,682)	(31,737)
UFE/LOSSES	88,576	89,562	89,349	84,029	93,605	96,122	91,254
	16	17	18	19	20	21	22
DAM NYCA	490,714	473,468	459,739	451,627	457,659	445,148	466,041
DAM NON-NYCA	23,280	26,208	30,312	29,748	29,879	26,788	23,655
DAM WHEELS	9,698	11,167	10,257	9,614	9,560	8,919	8,327
DAM VIRTUAL	32,253	25,894	23,445	21,829	23,830	33,511	38,431
BALANCING NYCA	(89,403)	(93,832)	(96,884)	(106,372)	(99,703)	(84,347)	(84,463)
BALANCING NON-NYCA	6,134	3,247	(52)	6,927	4,900	778	12,834
BALANCING WHEELS	(2,498)	(3,967)	(3,057)	(2,414)	(2,360)	(1,694)	(1,127)
BALANCING VIRTUAL	(32,253)	(25,894)	(23,445)	(21,829)	(23,830)	(33,511)	(38,431)
UFE/LOSSES	88,489	85,045	87,086	91,781	87,967	79,297	93,862
	23	24	25	26	27	28	29
DAM NYCA	512,927	484,332	472,844	481,015	463,002	445,090	436,504
DAM NON-NYCA	27,560	27,967	27,354	24,339	29,796	22,501	18,738
DAM WHEELS	8,559	9,125	10,554	10,597	11,058	10,141	9,517
DAM VIRTUAL	35,274	30,347	25,147	34,910	27,588	29,767	33,224
BALANCING NYCA	(67,624)	(87,425)	(93,443)	(97,907)	(101,924)	(83,265)	(71,122)
BALANCING NON-NYCA	13,945	6,892	7,562	13,895	9,114	14,873	5,285
BALANCING WHEELS	(1,359)	(1,875)	(3,354)	(3,397)	(3,859)	(2,941)	(2,317)
BALANCING VIRTUAL	(35,274)	(30,347)	(25,147)	(34,910)	(27,588)	(29,767)	(33,224)
UFE/LOSSES	103,131	95,918	91,452	98,279	93,930	94,803	82,052
	30						
DAM NYCA	455,368						
DAM NON-NYCA	22,744						
DAM WHEELS	11,509						
DAM VIRTUAL	29,490						
BALANCING NYCA	(89,748)						
BALANCING NON-NYCA	7,251						
BALANCING WHEELS	(8,185)						
BALANCING VIRTUAL	(29,490)						
UFE/LOSSES	86,217						



SETTLEMENTS REPORT  
September 2019 Settlement Adjustment  
October 7, 2019

Initial Settlement Adjustment – Market Withdrawals Analysis

	MONDAY	TUESDAY	WEDNESDAY	THURSDAY	FRIDAY	SATURDAY	SUNDAY
DAM NYCA							1
DAM NON-NYCA							467,159
DAM WHEELS							19,905
DAM VIRTUAL							9,907
BALANCING NYCA							23,542
BALANCING NON-NYCA							(112,484)
BALANCING WHEELS							11,395
BALANCING VIRTUAL							(2,707)
UFE/LOSSES							(23,542)
							89,778
	2	3	4	5	6	7	8
DAM NYCA	491,370	533,438	548,612	500,848	478,535	447,306	433,614
DAM NON-NYCA	22,048	17,980	18,512	25,685	27,708	26,304	23,599
DAM WHEELS	9,587	9,770	8,526	8,936	9,118	9,613	10,062
DAM VIRTUAL	28,252	32,539	41,855	28,674	27,149	28,775	21,267
BALANCING NYCA	(113,193)	(101,800)	(102,185)	(96,764)	(104,288)	(109,257)	(91,570)
BALANCING NON-NYCA	13,445	6,127	15,385	2,176	3,437	10,536	10,332
BALANCING WHEELS	(2,362)	(4,970)	(1,326)	(1,736)	(1,918)	(2,413)	(2,862)
BALANCING VIRTUAL	(28,252)	(32,539)	(41,855)	(28,674)	(27,149)	(28,775)	(21,267)
UFE/LOSSES	91,114	82,565	93,551	84,936	85,517	84,070	86,361
	9	10	11	12	13	14	15
DAM NYCA	472,080	481,361	530,740	516,346	468,864	444,840	450,845
DAM NON-NYCA	29,067	25,482	19,868	24,249	26,274	25,467	22,427
DAM WHEELS	9,417	9,613	7,459	7,488	9,117	8,813	9,810
DAM VIRTUAL	25,983	32,419	55,477	32,557	27,235	20,682	31,737
BALANCING NYCA	(86,246)	(78,721)	(66,900)	(75,229)	(107,571)	(99,665)	(80,317)
BALANCING NON-NYCA	4,978	7,420	14,807	4,454	15,451	14,416	9,975
BALANCING WHEELS	(2,217)	(2,413)	(184)	(288)	(1,917)	(1,613)	(2,610)
BALANCING VIRTUAL	(25,983)	(32,419)	(55,477)	(32,557)	(27,235)	(20,682)	(31,737)
UFE/LOSSES	88,576	89,614	89,167	84,029	93,080	96,604	91,262
	16	17	18	19	20	21	22
DAM NYCA	490,714	473,468	459,739	451,627	457,659	445,148	466,041
DAM NON-NYCA	23,280	26,208	30,312	29,748	29,879	26,788	23,655
DAM WHEELS	9,698	11,167	10,257	9,614	9,560	8,919	8,327
DAM VIRTUAL	32,253	25,894	23,445	21,829	23,830	33,511	38,431
BALANCING NYCA	(89,402)	(93,827)	(98,856)	(106,372)	(99,748)	(84,347)	(84,463)
BALANCING NON-NYCA	6,134	3,247	(52)	6,927	4,900	778	12,834
BALANCING WHEELS	(2,498)	(3,967)	(3,057)	(2,414)	(2,360)	(1,694)	(1,127)
BALANCING VIRTUAL	(32,253)	(25,894)	(23,445)	(21,829)	(23,830)	(33,511)	(38,431)
UFE/LOSSES	88,489	85,040	87,058	91,781	88,008	79,297	93,862
	23	24	25	26	27	28	29
DAM NYCA	512,927	484,332	472,844	481,015	463,002	445,090	436,504
DAM NON-NYCA	27,560	27,967	27,354	24,339	29,796	22,501	18,738
DAM WHEELS	8,559	9,125	10,554	10,597	11,058	10,141	9,517
DAM VIRTUAL	35,274	30,347	25,147	34,910	27,588	29,767	33,224
BALANCING NYCA	(67,624)	(87,425)	(93,443)	(97,907)	(101,648)	(83,265)	(71,122)
BALANCING NON-NYCA	13,945	6,892	7,562	13,895	9,114	14,873	5,285
BALANCING WHEELS	(1,359)	(1,875)	(3,354)	(3,397)	(3,858)	(2,941)	(2,317)
BALANCING VIRTUAL	(35,274)	(30,347)	(25,147)	(34,910)	(27,588)	(29,767)	(33,224)
UFE/LOSSES	103,131	95,918	91,452	98,279	94,051	94,803	82,052
	30						
DAM NYCA	455,368						
DAM NON-NYCA	22,744						
DAM WHEELS	11,509						
DAM VIRTUAL	29,490						
BALANCING NYCA	(89,748)						
BALANCING NON-NYCA	7,251						
BALANCING WHEELS	(8,185)						
BALANCING VIRTUAL	(29,490)						
UFE/LOSSES	86,217						

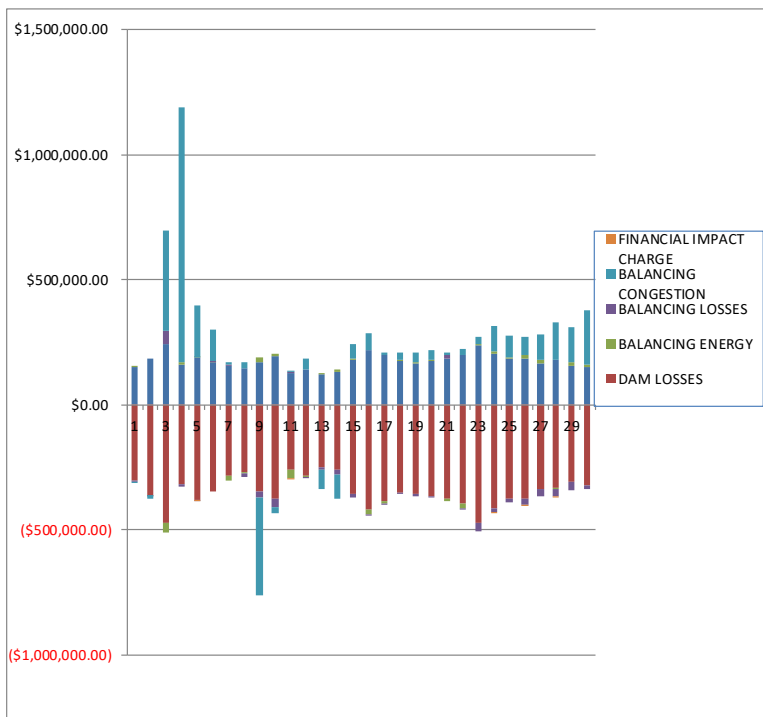




SETTLEMENTS REPORT  
September 2019 Settlement Adjustment  
October 7, 2019

Weekly Settlement – Market Residuals Analysis

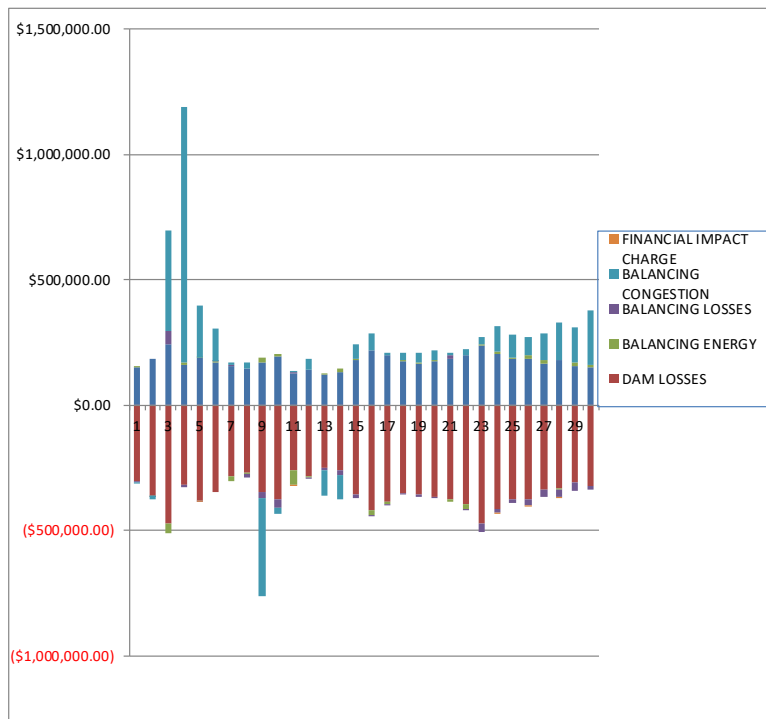
	MONDAY	TUESDAY	WEDNESDAY	THURSDAY	FRIDAY	SATURDAY	SUNDAY
							1
DAM ENERGY							\$152,625.08
DAM LOSSES							(\$304,199.45)
BALANCING ENERGY							\$759.09
BALANCING LOSSES							(\$4,506.55)
BALANCING CONGESTION							(\$726.77)
FINANCIAL IMPACT CHARGE							\$0.00
	2	3	4	5	6	7	8
DAM ENERGY	\$184,064.24	\$241,802.75	\$158,300.51	\$187,136.06	\$169,735.97	\$157,114.47	\$145,196.73
DAM LOSSES	(\$360,594.07)	(\$472,248.11)	(\$316,802.90)	(\$379,848.45)	(\$345,779.71)	(\$286,282.82)	(\$268,534.60)
BALANCING ENERGY	(\$971.72)	(\$36,737.70)	\$9,481.20	\$2,974.26	\$2,348.70	(\$15,511.51)	(\$4,423.23)
BALANCING LOSSES	(\$1,836.02)	\$52,166.08	(\$10,169.83)	(\$654.23)	\$3,258.82	\$697.29	(\$14,719.67)
BALANCING CONGESTION	(\$13,197.50)	\$402,342.09	\$1,019,689.13	\$207,978.37	\$126,795.38	\$13,928.86	\$23,994.62
FINANCIAL IMPACT CHARGE	\$0.00	\$0.00	\$0.00	(\$86.42)	\$0.00	\$0.00	\$0.00
	9	10	11	12	13	14	15
DAM ENERGY	\$170,106.64	\$195,586.68	\$124,217.60	\$138,648.63	\$119,650.99	\$128,852.57	\$177,135.51
DAM LOSSES	(\$348,927.76)	(\$375,873.51)	(\$260,774.98)	(\$285,845.13)	(\$249,099.07)	(\$262,053.28)	(\$357,264.65)
BALANCING ENERGY	\$20,174.88	\$6,448.53	(\$34,904.70)	(\$4,637.24)	\$7,985.01	\$10,733.23	\$6,871.62
BALANCING LOSSES	(\$23,986.16)	(\$35,206.05)	\$8,908.89	(\$514.91)	(\$9,333.78)	(\$16,118.88)	(\$15,967.28)
BALANCING CONGESTION	(\$388,559.44)	(\$22,772.32)	\$3,343.89	\$45,528.10	(\$79,338.02)	(\$99,672.79)	\$55,902.40
FINANCIAL IMPACT CHARGE	\$0.00	\$0.00	(\$23.12)	\$0.00	\$0.00	\$0.00	\$0.00
	16	17	18	19	20	21	22
DAM ENERGY	\$218,861.79	\$198,082.32	\$173,083.34	\$166,462.45	\$176,701.30	\$186,395.25	\$196,920.53
DAM LOSSES	(\$418,084.50)	(\$384,410.32)	(\$351,616.72)	(\$355,835.63)	(\$365,907.79)	(\$375,262.84)	(\$395,594.86)
BALANCING ENERGY	(\$21,386.69)	(\$11,452.23)	\$7,019.07	\$4,602.28	\$940.39	(\$11,790.20)	(\$20,711.03)
BALANCING LOSSES	(\$5,218.88)	(\$3,636.04)	(\$5,363.26)	(\$8,823.28)	(\$2,691.09)	\$12,208.42	(\$4,776.73)
BALANCING CONGESTION	\$68,453.59	\$12,581.02	\$27,566.66	\$39,280.67	\$42,883.07	\$9,653.83	\$27,850.57
FINANCIAL IMPACT CHARGE	\$0.00	\$0.00	\$0.00	\$0.00	\$0.00	\$0.00	\$0.00
	23	24	25	26	27	28	29
DAM ENERGY	\$238,249.97	\$205,044.66	\$185,210.38	\$183,299.65	\$167,158.78	\$180,594.71	\$154,270.65
DAM LOSSES	(\$472,217.17)	(\$413,291.57)	(\$373,761.96)	(\$377,466.15)	(\$338,589.46)	(\$334,750.10)	(\$310,427.71)
BALANCING ENERGY	\$2,028.65	\$8,515.77	\$6,091.91	\$16,896.53	\$12,726.83	(\$650.85)	\$14,063.00
BALANCING LOSSES	(\$32,492.01)	(\$15,687.89)	(\$15,734.53)	(\$24,792.79)	(\$27,835.66)	(\$31,207.85)	(\$30,711.99)
BALANCING CONGESTION	\$28,948.00	\$99,144.68	\$87,101.63	\$70,093.09	\$102,164.26	\$147,917.21	\$142,896.48
FINANCIAL IMPACT CHARGE	\$0.00	(\$19.21)	\$0.00	(\$259.99)	\$0.00	(\$137.71)	\$0.00
	30						
DAM ENERGY		\$149,130.40					
DAM LOSSES		(\$323,990.39)					
BALANCING ENERGY		\$13,131.07					
BALANCING LOSSES		(\$13,729.31)					
BALANCING CONGESTION		\$213,313.52					
FINANCIAL IMPACT CHARGE		\$0.00					



SETTLEMENTS REPORT  
September 2019 Settlement Adjustment  
October 7, 2019

Initial Settlement Adjustment – Market Residuals Analysis

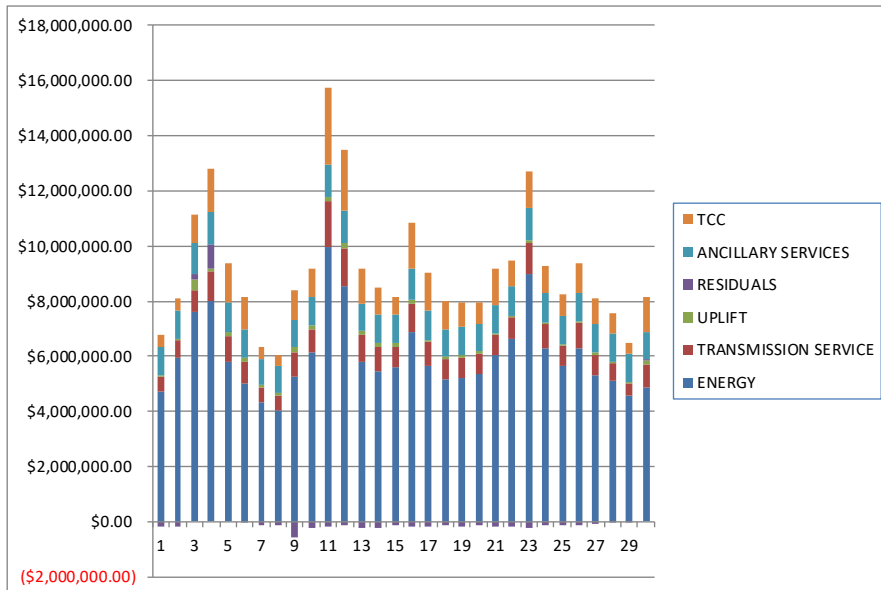
	MONDAY	TUESDAY	WEDNESDAY	THURSDAY	FRIDAY	SATURDAY	SUNDAY
							1
DAM ENERGY							\$152,625.08
DAM LOSSES							(\$304,199.45)
BALANCING ENERGY							\$758.55
BALANCING LOSSES							(\$4,506.55)
BALANCING CONGESTION							(\$727.42)
FINANCIAL IMPACT CHARGE							\$0.00
	2	3	4	5	6	7	8
DAM ENERGY	\$184,064.24	\$241,802.75	\$158,300.52	\$187,136.07	\$169,735.97	\$157,114.48	\$145,196.73
DAM LOSSES	(\$360,594.08)	(\$472,248.11)	(\$316,802.90)	(\$379,848.45)	(\$345,779.71)	(\$286,282.82)	(\$268,534.61)
BALANCING ENERGY	(\$1,017.06)	(\$36,738.24)	\$9,581.50	\$2,206.56	\$3,192.82	(\$15,510.58)	(\$4,405.17)
BALANCING LOSSES	(\$1,839.53)	\$52,177.58	(\$10,156.74)	(\$707.58)	\$3,337.91	\$697.41	(\$14,716.67)
BALANCING CONGESTION	(\$13,385.00)	\$402,469.36	\$1,019,716.77	\$207,927.82	\$126,950.40	\$13,947.42	\$24,103.69
FINANCIAL IMPACT CHARGE	\$0.00	\$0.00	\$0.00	(\$86.42)	\$0.00	\$0.00	\$0.00
	9	10	11	12	13	14	15
DAM ENERGY	\$170,106.64	\$195,586.67	\$124,217.61	\$138,648.63	\$119,650.99	\$128,852.57	\$177,135.51
DAM LOSSES	(\$348,927.77)	(\$375,873.51)	(\$260,774.98)	(\$285,845.13)	(\$249,099.08)	(\$262,053.27)	(\$357,264.65)
BALANCING ENERGY	\$20,174.80	\$7,508.47	(\$55,656.74)	(\$4,555.37)	\$7,816.80	\$14,945.70	\$7,068.07
BALANCING LOSSES	(\$23,986.16)	(\$35,217.25)	\$5,811.58	(\$512.43)	(\$12,675.98)	(\$15,742.45)	(\$15,941.36)
BALANCING CONGESTION	(\$388,559.99)	(\$22,751.39)	\$1,848.58	\$45,445.43	(\$99,863.03)	(\$99,674.42)	\$55,908.82
FINANCIAL IMPACT CHARGE	\$0.00	\$0.00	(\$23.14)	\$0.00	\$0.00	\$0.00	\$0.00
	16	17	18	19	20	21	22
DAM ENERGY	\$218,861.80	\$198,082.31	\$173,083.34	\$166,462.45	\$176,701.30	\$186,395.25	\$196,920.53
DAM LOSSES	(\$418,084.51)	(\$384,410.33)	(\$351,616.71)	(\$355,835.63)	(\$365,907.79)	(\$375,262.84)	(\$395,594.86)
BALANCING ENERGY	(\$21,387.57)	(\$11,461.54)	\$6,567.48	\$4,602.28	\$1,464.63	(\$11,790.20)	(\$20,711.03)
BALANCING LOSSES	(\$5,218.42)	(\$3,624.77)	(\$5,381.73)	(\$8,823.28)	(\$2,576.94)	\$12,208.42	(\$4,776.73)
BALANCING CONGESTION	\$68,452.93	\$12,581.20	\$27,589.69	\$39,280.67	\$42,037.22	\$9,653.83	\$27,850.57
FINANCIAL IMPACT CHARGE	\$0.00	\$0.00	\$0.00	\$0.00	\$0.00	\$0.00	\$0.00
	23	24	25	26	27	28	29
DAM ENERGY	\$238,249.97	\$205,044.66	\$185,210.38	\$183,299.65	\$167,158.77	\$180,594.71	\$154,270.65
DAM LOSSES	(\$472,217.17)	(\$413,291.57)	(\$373,761.96)	(\$377,466.15)	(\$338,589.47)	(\$334,750.10)	(\$310,427.71)
BALANCING ENERGY	\$2,028.65	\$8,740.65	\$6,163.18	\$16,719.13	\$14,506.12	(\$650.85)	\$14,063.00
BALANCING LOSSES	(\$2,492.01)	(\$15,664.84)	(\$15,732.25)	(\$24,816.66)	(\$27,762.18)	(\$31,207.85)	(\$30,711.99)
BALANCING CONGESTION	\$28,948.00	\$99,075.20	\$87,170.12	\$70,266.06	\$102,323.85	\$147,917.21	\$142,896.48
FINANCIAL IMPACT CHARGE	\$0.00	(\$19.21)	\$0.00	(\$259.99)	\$0.00	(\$137.71)	\$0.00
	30						
DAM ENERGY		\$149,130.40					
DAM LOSSES		(\$323,990.39)					
BALANCING ENERGY		\$13,131.07					
BALANCING LOSSES		(\$13,729.31)					
BALANCING CONGESTION		\$213,313.52					
FINANCIAL IMPACT CHARGE		\$0.00					



SETTLEMENTS REPORT  
September 2019 Settlement Adjustment  
October 7, 2019

Weekly Settlement – Market Costs Analysis

	MONDAY	TUESDAY	WEDNESDAY	THURSDAY	FRIDAY	SATURDAY	SUNDAY
ENERGY							1
TRANSMISSION SERVICE							\$4,694,756.35
UPLIFT							\$562,106.97
RESIDUALS							\$66,827.33
ANCILLARY SERVICES							(\$156,048.60)
TCC							\$998,559.96
							\$450,172.33
	2	3	4	5	6	7	8
ENERGY	\$5,964,051.23	\$7,593,349.38	\$8,010,097.89	\$5,813,244.31	\$5,002,990.18	\$4,331,091.96	\$4,033,903.35
TRANSMISSION SERVICE	\$603,026.27	\$784,244.83	\$1,069,554.15	\$920,267.05	\$817,594.37	\$537,243.74	\$543,267.72
UPLIFT	\$51,580.98	\$419,010.76	\$100,760.91	\$132,040.73	\$136,411.67	\$78,384.21	\$86,955.78
RESIDUALS	(\$192,535.07)	\$187,325.11	\$860,498.11	\$17,499.59	(\$43,640.84)	(\$130,053.71)	(\$118,486.15)
ANCILLARY SERVICES	\$1,051,562.18	\$1,144,361.86	\$1,189,573.68	\$1,072,807.97	\$1,007,316.87	\$952,094.70	\$963,923.05
TCC	\$408,611.39	\$1,010,956.84	\$1,562,791.13	\$1,415,057.15	\$1,193,210.33	\$413,369.49	\$415,288.29
	9	10	11	12	13	14	15
ENERGY	\$5,277,465.96	\$6,149,321.20	\$9,945,578.09	\$8,521,798.21	\$5,799,371.85	\$5,453,467.66	\$5,600,542.44
TRANSMISSION SERVICE	\$837,857.63	\$838,821.59	\$1,666,851.72	\$1,394,370.85	\$973,476.24	\$888,177.08	\$719,383.16
UPLIFT	\$203,797.25	\$118,527.50	\$135,243.80	\$176,741.33	\$127,201.93	\$125,008.65	\$143,787.90
RESIDUALS	(\$571,191.84)	(\$231,816.67)	(\$159,232.42)	(\$106,820.55)	(\$210,134.87)	(\$238,259.15)	(\$133,322.40)
ANCILLARY SERVICES	\$1,013,015.86	\$1,054,663.31	\$1,210,276.37	\$1,166,169.80	\$1,005,286.20	\$1,025,406.73	\$1,030,519.32
TCC	\$1,072,805.88	\$1,034,493.28	\$2,800,385.92	\$2,214,431.32	\$1,284,347.37	\$975,626.38	\$676,160.45
	16	17	18	19	20	21	22
ENERGY	\$6,887,383.27	\$5,667,530.20	\$5,137,699.64	\$5,198,072.48	\$5,351,162.52	\$6,022,898.61	\$6,628,061.16
TRANSMISSION SERVICE	\$1,027,018.86	\$844,220.29	\$739,172.32	\$764,558.55	\$729,359.38	\$776,657.87	\$776,974.23
UPLIFT	\$150,372.38	\$83,300.80	\$114,052.97	\$96,914.87	\$87,177.72	\$45,334.48	\$36,563.88
RESIDUALS	(\$157,374.69)	(\$188,835.25)	(\$149,310.91)	(\$154,313.51)	(\$148,074.12)	(\$178,795.54)	(\$196,311.52)
ANCILLARY SERVICES	\$1,093,514.08	\$1,037,696.27	\$993,375.95	\$991,385.17	\$999,934.83	\$1,023,482.54	\$1,080,861.68
TCC	\$1,657,908.72	\$1,372,613.42	\$1,008,792.23	\$912,316.48	\$764,161.55	\$1,283,035.84	\$949,893.41
	23	24	25	26	27	28	29
ENERGY	\$8,983,965.95	\$6,265,358.57	\$5,642,280.31	\$6,309,509.09	\$5,306,492.79	\$5,106,892.62	\$4,553,436.51
TRANSMISSION SERVICE	\$1,104,900.42	\$899,804.63	\$736,307.70	\$887,350.63	\$739,118.62	\$646,329.83	\$470,379.31
UPLIFT	\$97,453.49	\$54,756.36	\$63,496.70	\$80,851.96	\$104,420.12	\$60,058.58	\$59,407.17
RESIDUALS	(\$235,482.56)	(\$116,293.56)	(\$111,092.57)	(\$132,229.66)	(\$84,375.25)	(\$38,234.59)	(\$29,909.57)
ANCILLARY SERVICES	\$1,180,967.97	\$1,065,768.90	\$1,041,235.51	\$1,038,570.89	\$1,024,890.89	\$1,032,227.47	\$1,028,678.24
TCC	\$1,321,127.36	\$1,010,191.42	\$774,432.72	\$1,078,000.02	\$924,197.12	\$715,658.54	\$358,596.33
	30						
ENERGY	\$4,878,761.25						
TRANSMISSION SERVICE	\$841,099.02						
UPLIFT	\$123,076.59						
RESIDUALS	\$37,855.29						
ANCILLARY SERVICES	\$1,013,635.53						
TCC	\$1,267,737.84						



SETTLEMENTS REPORT  
September 2019 Settlement Adjustment  
October 7, 2019

Initial Settlement Adjustment – Market Costs Analysis

	MONDAY	TUESDAY	WEDNESDAY	THURSDAY	FRIDAY	SATURDAY	SUNDAY
ENERGY							1
TRANSMISSION SERVICE							\$4,694,757.63
UPLIFT							\$562,106.91
RESIDUALS							\$66,827.33
ANCILLARY SERVICES							(\$156,049.79)
TCC							\$998,559.84
	2	3	4	5	6	7	8
ENERGY	\$5,964,287.41	\$7,594,211.86	\$8,010,486.76	\$5,814,059.81	\$5,001,920.48	\$4,331,072.40	\$4,033,945.36
TRANSMISSION SERVICE	\$603,036.73	\$784,269.40	\$1,069,576.56	\$920,287.77	\$817,568.63	\$537,243.70	\$543,267.66
UPLIFT	\$51,580.98	\$419,010.76	\$100,760.91	\$132,040.73	\$136,411.67	\$78,384.22	\$86,955.78
RESIDUALS	(\$192,771.43)	\$187,463.34	\$860,639.15	\$16,628.00	(\$42,562.61)	(\$130,034.09)	(\$118,356.03)
ANCILLARY SERVICES	\$1,051,585.74	\$1,144,431.37	\$1,189,638.04	\$1,072,853.13	\$1,007,259.29	\$952,094.62	\$963,922.87
TCC	\$408,611.39	\$1,010,956.84	\$1,562,791.13	\$1,415,057.15	\$1,193,210.33	\$413,369.49	\$415,288.29
	9	10	11	12	13	14	15
ENERGY	\$5,277,469.18	\$6,148,228.86	\$9,970,914.57	\$8,521,809.20	\$5,824,980.13	\$5,448,879.48	\$5,600,313.59
TRANSMISSION SERVICE	\$837,857.66	\$838,793.92	\$1,666,945.92	\$1,394,370.95	\$973,796.85	\$887,926.48	\$719,379.00
UPLIFT	\$203,797.25	\$118,527.51	\$135,243.79	\$176,741.34	\$127,201.92	\$125,008.65	\$143,787.90
RESIDUALS	(\$571,192.48)	(\$230,747.01)	(\$184,577.09)	(\$106,818.87)	(\$234,170.30)	(\$233,671.87)	(\$133,093.61)
ANCILLARY SERVICES	\$1,013,015.93	\$1,054,585.06	\$1,210,488.35	\$1,166,170.39	\$1,006,035.66	\$1,024,842.39	\$1,030,509.95
TCC	\$1,072,805.88	\$1,034,493.28	\$2,800,385.92	\$2,214,431.32	\$1,284,347.37	\$975,626.38	\$676,160.45
	16	17	18	19	20	21	22
ENERGY	\$6,887,405.75	\$5,667,528.00	\$5,138,146.68	\$5,198,072.48	\$5,351,314.36	\$6,022,898.61	\$6,628,061.16
TRANSMISSION SERVICE	\$1,027,019.62	\$844,222.89	\$739,186.92	\$764,558.55	\$729,336.09	\$776,657.87	\$776,974.23
UPLIFT	\$150,372.38	\$83,300.78	\$114,052.97	\$96,914.87	\$87,177.71	\$45,334.48	\$36,563.88
RESIDUALS	(\$157,375.77)	(\$188,833.13)	(\$149,757.93)	(\$154,313.51)	(\$148,281.58)	(\$178,795.54)	(\$196,311.52)
ANCILLARY SERVICES	\$1,093,516.21	\$1,037,702.11	\$993,408.80	\$991,385.17	\$999,881.33	\$1,023,482.54	\$1,080,861.68
TCC	\$1,657,908.72	\$1,372,613.42	\$1,008,792.23	\$912,316.48	\$764,161.55	\$1,283,035.84	\$949,893.41
	23	24	25	26	27	28	29
ENERGY	\$8,983,965.95	\$6,265,180.01	\$5,642,138.37	\$6,309,537.53	\$5,311,489.16	\$5,106,892.62	\$4,553,436.51
TRANSMISSION SERVICE	\$1,104,900.42	\$899,804.63	\$736,307.70	\$887,350.63	\$739,262.54	\$646,329.83	\$470,379.31
UPLIFT	\$97,453.49	\$54,756.36	\$63,496.70	\$80,851.96	\$104,420.11	\$60,058.58	\$59,407.17
RESIDUALS	(\$235,482.56)	(\$116,115.11)	(\$110,950.53)	(\$132,257.96)	(\$82,362.91)	(\$38,234.59)	(\$29,909.57)
ANCILLARY SERVICES	\$1,180,967.97	\$1,065,768.90	\$1,041,235.51	\$1,038,570.89	\$1,025,334.44	\$1,032,227.47	\$1,028,678.24
TCC	\$1,321,127.36	\$1,010,191.42	\$774,432.72	\$1,078,000.02	\$924,197.12	\$715,658.54	\$358,596.33
	30						
ENERGY	\$4,878,761.25						
TRANSMISSION SERVICE	\$841,099.02						
UPLIFT	\$123,076.59						
RESIDUALS	\$37,855.29						
ANCILLARY SERVICES	\$1,013,635.53						
TCC	\$1,267,737.84						

