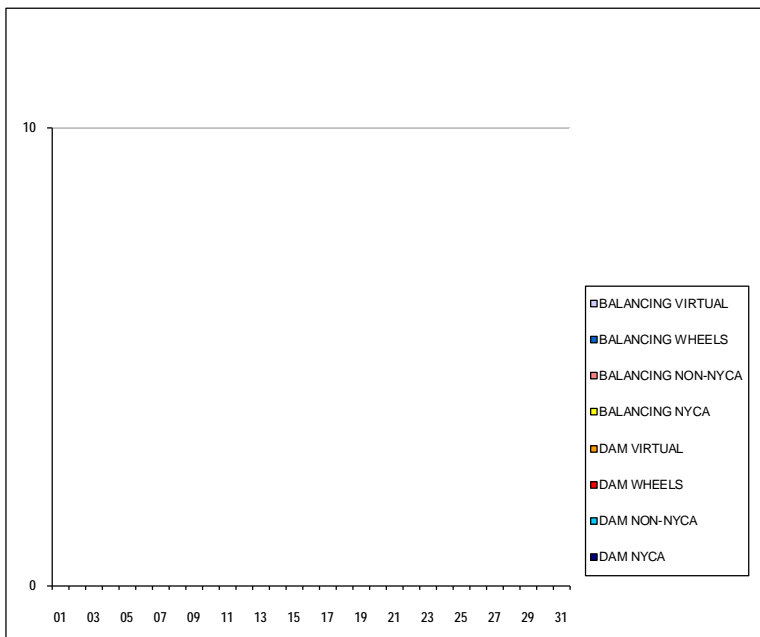


SETTLEMENTS REPORT
 March 2019 Close-Out Settlement
 December 6, 2019

Close-Out Settlement – Market Supply Delta Analysis

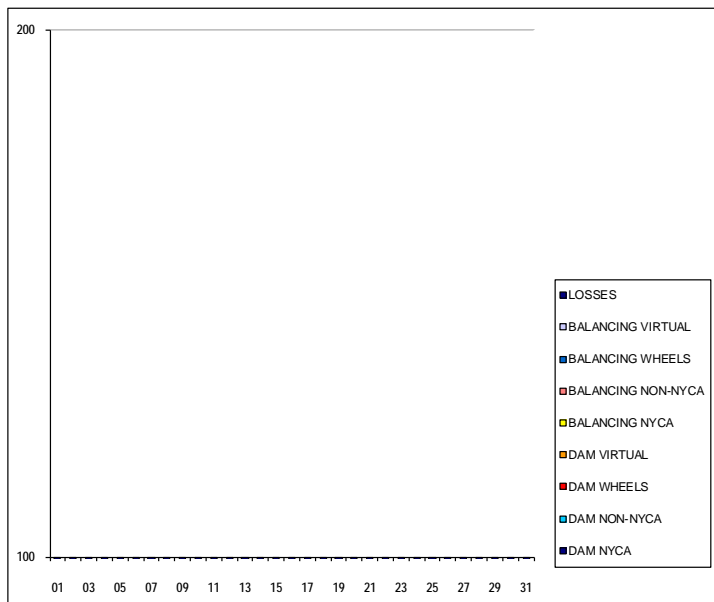
	MONDAY	TUESDAY	WEDNESDAY	THURSDAY	FRIDAY	SATURDAY	SUNDAY
					1	2	3
DAM NYCA					0	0	0
DAM NON-NYCA					0	0	0
DAM WHEELS					0	0	0
DAM VIRTUAL					0	0	0
BALANCING NYCA					0	0	0
BALANCING NON-NYCA					0	0	0
BALANCING WHEELS					0	0	0
BALANCING VIRTUAL					0	0	0
	4	5	6	7	8	9	10
DAM NYCA	0	0	0	0	0	0	0
DAM NON-NYCA	0	0	0	0	0	0	0
DAM WHEELS	0	0	0	0	0	0	0
DAM VIRTUAL	0	0	0	0	0	0	0
BALANCING NYCA	0	0	0	0	0	0	0
BALANCING NON-NYCA	0	0	0	0	0	0	0
BALANCING WHEELS	0	0	0	0	0	0	0
BALANCING VIRTUAL	0	0	0	0	0	0	0
	11	12	13	14	15	16	17
DAM NYCA	0	0	0	0	0	0	0
DAM NON-NYCA	0	0	0	0	0	0	0
DAM WHEELS	0	0	0	0	0	0	0
DAM VIRTUAL	0	0	0	0	0	0	0
BALANCING NYCA	0	0	0	0	0	0	0
BALANCING NON-NYCA	0	0	0	0	0	0	0
BALANCING WHEELS	0	0	0	0	0	0	0
BALANCING VIRTUAL	0	0	0	0	0	0	0
	18	19	20	21	22	23	24
DAM NYCA	0	0	0	0	0	0	0
DAM NON-NYCA	0	0	0	0	0	0	0
DAM WHEELS	0	0	0	0	0	0	0
DAM VIRTUAL	0	0	0	0	0	0	0
BALANCING NYCA	0	0	0	0	0	0	0
BALANCING NON-NYCA	0	0	0	0	0	0	0
BALANCING WHEELS	0	0	0	0	0	0	0
BALANCING VIRTUAL	0	0	0	0	0	0	0
	25	26	27	28	29	30	31
DAM NYCA	0	0	0	0	0	0	0
DAM NON-NYCA	0	0	0	0	0	0	0
DAM WHEELS	0	0	0	0	0	0	0
DAM VIRTUAL	0	0	0	0	0	0	0
BALANCING NYCA	0	0	0	0	0	0	0
BALANCING NON-NYCA	0	0	0	0	0	0	0
BALANCING WHEELS	0	0	0	0	0	0	0
BALANCING VIRTUAL	0	0	0	0	0	0	0



SETTLEMENTS REPORT
 March 2019 Close-Out Settlement
 December 6, 2019

Close-Out Settlement – Market Withdrawals Delta Analysis

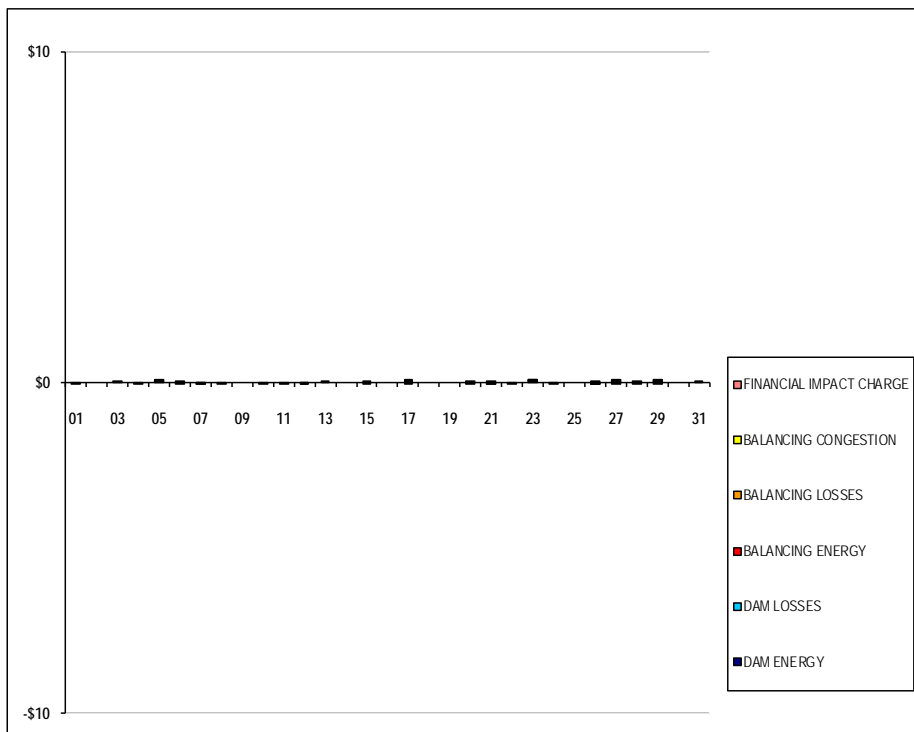
	MONDAY	TUESDAY	WEDNESDAY	THURSDAY	FRIDAY	SATURDAY	SUNDAY
					1	2	3
DAM NYCA					0	0	0
DAM NON-NYCA					0	0	0
DAM WHEELS					0	0	0
DAM VIRTUAL					0	0	0
BALANCING NYCA					(0)	0	(0)
BALANCING NON-NYCA					0	0	0
BALANCING WHEELS					0	0	0
BALANCING VIRTUAL					0	0	0
UFE/LOSSES					0	(0)	0
	4	5	6	7	8	9	10
DAM NYCA	0	0	0	0	0	0	0
DAM NON-NYCA	0	0	0	0	0	0	0
DAM WHEELS	0	0	0	0	0	0	0
DAM VIRTUAL	0	0	0	0	0	0	0
BALANCING NYCA	(0)	0	0	(0)	0	(0)	(0)
BALANCING NON-NYCA	0	0	0	0	0	0	0
BALANCING WHEELS	0	0	0	0	0	0	0
BALANCING VIRTUAL	0	0	0	0	0	0	0
UFE/LOSSES	0	(0)	(0)	0	(0)	0	0
	11	12	13	14	15	16	17
DAM NYCA	0	0	0	0	0	0	0
DAM NON-NYCA	0	0	0	0	0	0	0
DAM WHEELS	0	0	0	0	0	0	0
DAM VIRTUAL	0	0	0	0	0	0	0
BALANCING NYCA	(0)	(0)	0	0	0	(0)	0
BALANCING NON-NYCA	0	0	0	0	0	0	0
BALANCING WHEELS	0	0	0	0	0	0	0
BALANCING VIRTUAL	0	0	0	0	0	0	0
UFE/LOSSES	0	0	(0)	(0)	(0)	0	(0)
	18	19	20	21	22	23	24
DAM NYCA	0	0	0	0	0	0	0
DAM NON-NYCA	0	0	0	0	0	0	0
DAM WHEELS	0	0	0	0	0	0	0
DAM VIRTUAL	0	0	0	0	0	0	0
BALANCING NYCA	0	(0)	(0)	0	0	(0)	(0)
BALANCING NON-NYCA	0	0	0	0	0	0	0
BALANCING WHEELS	0	0	0	0	0	0	0
BALANCING VIRTUAL	0	0	0	0	0	0	0
UFE/LOSSES	(0)	0	0	(0)	(0)	0	0
	25	26	27	28	29	30	31
DAM NYCA	0	0	0	0	0	0	0
DAM NON-NYCA	0	0	0	0	0	0	0
DAM WHEELS	0	0	0	0	0	0	0
DAM VIRTUAL	0	0	0	0	0	0	0
BALANCING NYCA	0	0	(0)	0	0	(0)	(0)
BALANCING NON-NYCA	0	0	0	0	0	0	0
BALANCING WHEELS	0	0	0	0	0	0	0
BALANCING VIRTUAL	0	0	0	0	0	0	0
UFE/LOSSES	(0)	(0)	0	(0)	(0)	0	0



SETTLEMENTS REPORT
 March 2019 Close-Out Settlement
 December 6, 2019

Close-Out Settlement – Market Residuals Delta Analysis

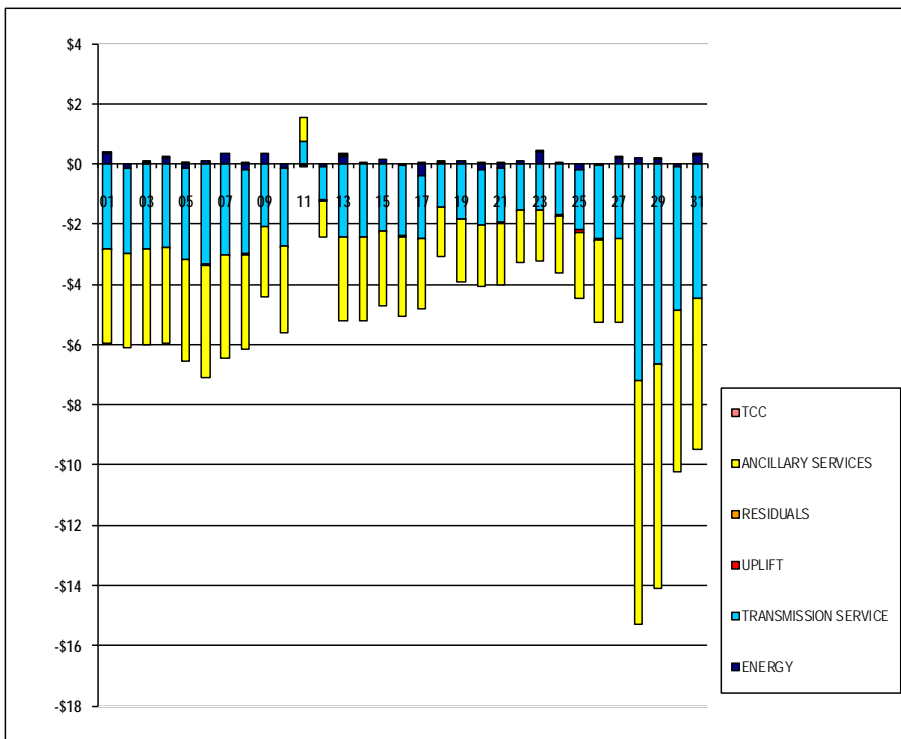
	MONDAY	TUESDAY	WEDNESDAY	THURSDAY	FRIDAY	SATURDAY	SUNDAY
					1	2	3
DAM ENERGY					\$0.00	\$0.00	\$0.01
DAM LOSSES					(\$0.01)	\$0.00	\$0.00
BALANCING ENERGY					\$0.00	\$0.00	\$0.00
BALANCING LOSSES					\$0.00	\$0.00	\$0.00
BALANCING CONGESTION					\$0.00	\$0.00	\$0.00
FINANCIAL IMPACT CHARGE					\$0.00	\$0.00	\$0.00
	4	5	6	7	8	9	10
DAM ENERGY	\$0.00	\$0.00	\$0.00	\$0.00	\$0.00	\$0.00	\$0.00
DAM LOSSES	\$0.00	\$0.01	\$0.00	(\$0.01)	\$0.00	\$0.00	\$0.00
BALANCING ENERGY	\$0.00	\$0.00	\$0.01	\$0.00	(\$0.01)	\$0.00	\$0.00
BALANCING LOSSES	(\$0.01)	\$0.00	\$0.00	\$0.00	\$0.00	\$0.00	(\$0.01)
BALANCING CONGESTION	\$0.00	\$0.01	(\$0.01)	(\$0.01)	\$0.00	\$0.00	\$0.00
FINANCIAL IMPACT CHARGE	\$0.00	\$0.00	\$0.00	\$0.00	\$0.00	\$0.00	\$0.00
	11	12	13	14	15	16	17
DAM ENERGY	\$0.00	\$0.00	\$0.00	\$0.00	\$0.00	\$0.00	\$0.01
DAM LOSSES	\$0.00	(\$0.01)	\$0.00	\$0.00	\$0.00	\$0.00	\$0.00
BALANCING ENERGY	\$0.00	\$0.00	\$0.01	\$0.00	(\$0.01)	\$0.00	(\$0.01)
BALANCING LOSSES	(\$0.01)	(\$0.01)	\$0.00	\$0.00	\$0.00	\$0.00	\$0.01
BALANCING CONGESTION	\$0.00	\$0.00	\$0.00	\$0.00	\$0.01	\$0.00	\$0.00
FINANCIAL IMPACT CHARGE	\$0.00	\$0.00	\$0.00	\$0.00	\$0.00	\$0.00	\$0.00
	18	19	20	21	22	23	24
DAM ENERGY	\$0.00	\$0.00	\$0.01	\$0.01	(\$0.01)	\$0.01	(\$0.01)
DAM LOSSES	\$0.00	\$0.00	\$0.00	\$0.00	\$0.00	\$0.00	\$0.00
BALANCING ENERGY	\$0.00	\$0.00	\$0.00	(\$0.01)	\$0.00	\$0.01	\$0.00
BALANCING LOSSES	\$0.00	\$0.00	(\$0.01)	(\$0.01)	\$0.00	\$0.00	\$0.00
BALANCING CONGESTION	\$0.00	\$0.00	\$0.00	\$0.00	\$0.00	\$0.01	\$0.00
FINANCIAL IMPACT CHARGE	\$0.00	\$0.00	\$0.00	\$0.00	\$0.00	\$0.00	\$0.00
	25	26	27	28	29	30	31
DAM ENERGY	\$0.00	(\$0.01)	\$0.00	\$0.01	\$0.00	\$0.00	\$0.00
DAM LOSSES	\$0.00	(\$0.01)	(\$0.01)	\$0.00	(\$0.01)	\$0.00	\$0.01
BALANCING ENERGY	\$0.00	\$0.00	\$0.01	\$0.00	\$0.01	\$0.00	\$0.00
BALANCING LOSSES	\$0.00	\$0.01	\$0.00	\$0.00	\$0.00	\$0.00	\$0.00
BALANCING CONGESTION	\$0.00	(\$0.01)	\$0.01	\$0.00	\$0.01	\$0.00	\$0.00
FINANCIAL IMPACT CHARGE	\$0.00	\$0.00	\$0.00	(\$0.01)	\$0.00	\$0.00	\$0.00



SETTLEMENTS REPORT
 March 2019 Close-Out Settlement
 December 6, 2019

Close-Out Settlement – Market Costs Delta Analysis

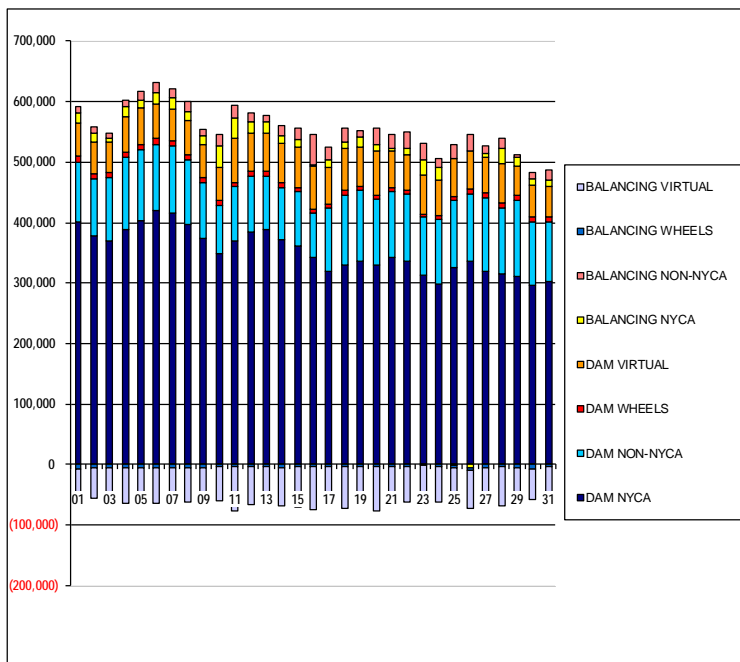
	MONDAY	TUESDAY	WEDNESDAY	THURSDAY	FRIDAY	SATURDAY	SUNDAY
					1	2	3
ENERGY					\$0.33	(\$0.17)	\$0.02
TRANSMISSION SERVICE					(\$2.81)	(\$2.79)	(\$2.82)
UPLIFT					\$0.01	\$0.00	\$0.01
RESIDUALS					(\$0.01)	\$0.00	\$0.01
ANCILLARY SERVICES					(\$3.15)	(\$3.14)	(\$3.18)
TCC					\$0.00	\$0.00	\$0.00
	4	5	6	7	8	9	10
ENERGY	\$0.19	(\$0.15)	\$0.08	\$0.35	(\$0.19)	\$0.36	(\$0.17)
TRANSMISSION SERVICE	(\$2.79)	(\$3.02)	(\$3.34)	(\$3.03)	(\$2.81)	(\$2.07)	(\$2.54)
UPLIFT	\$0.01	\$0.01	(\$0.01)	\$0.00	\$0.01	\$0.00	\$0.00
RESIDUALS	(\$0.01)	\$0.02	\$0.00	(\$0.02)	(\$0.01)	\$0.00	(\$0.01)
ANCILLARY SERVICES	(\$3.15)	(\$3.39)	(\$3.77)	(\$3.41)	(\$3.16)	(\$2.34)	(\$2.87)
TCC	\$0.00	\$0.00	\$0.00	\$0.00	\$0.00	\$0.00	\$0.00
	11	12	13	14	15	16	17
ENERGY	(\$0.06)	(\$0.10)	\$0.27	\$0.04	\$0.13	(\$0.06)	(\$0.39)
TRANSMISSION SERVICE	\$0.74	(\$1.09)	(\$2.45)	(\$2.44)	(\$2.22)	(\$2.33)	(\$2.09)
UPLIFT	\$0.00	(\$0.01)	\$0.02	(\$0.01)	(\$0.01)	(\$0.02)	(\$0.01)
RESIDUALS	(\$0.01)	(\$0.02)	\$0.01	\$0.00	\$0.00	\$0.00	\$0.01
ANCILLARY SERVICES	\$0.82	(\$1.23)	(\$2.76)	(\$2.75)	(\$2.51)	(\$2.63)	(\$2.34)
TCC	\$0.00	\$0.00	\$0.00	\$0.00	\$0.00	\$0.00	\$0.00
	18	19	20	21	22	23	24
ENERGY	\$0.04	\$0.12	(\$0.18)	(\$0.13)	\$0.11	\$0.41	\$0.03
TRANSMISSION SERVICE	(\$1.46)	(\$1.83)	(\$1.84)	(\$1.82)	(\$1.55)	(\$1.53)	(\$1.69)
UPLIFT	\$0.01	(\$0.01)	\$0.01	\$0.01	\$0.00	\$0.00	(\$0.03)
RESIDUALS	\$0.00	\$0.00	\$0.00	(\$0.01)	(\$0.01)	\$0.03	(\$0.01)
ANCILLARY SERVICES	(\$1.64)	(\$2.06)	(\$2.06)	(\$2.07)	(\$1.74)	(\$1.70)	(\$1.91)
TCC	\$0.00	\$0.00	\$0.00	\$0.00	\$0.00	\$0.00	\$0.00
	25	26	27	28	29	30	31
ENERGY	(\$0.22)	(\$0.04)	\$0.21	\$0.22	\$0.15	(\$0.08)	\$0.30
TRANSMISSION SERVICE	(\$1.98)	(\$2.45)	(\$2.47)	(\$7.21)	(\$6.63)	(\$4.77)	(\$4.46)
UPLIFT	(\$0.07)	(\$0.02)	\$0.00	\$0.00	(\$0.01)	\$0.00	\$0.00
RESIDUALS	\$0.00	(\$0.02)	\$0.01	\$0.00	\$0.01	\$0.00	\$0.01
ANCILLARY SERVICES	(\$2.22)	(\$2.75)	(\$2.78)	(\$8.10)	(\$7.46)	(\$5.39)	(\$5.03)
TCC	\$0.00	\$0.00	\$0.00	\$0.00	\$0.00	\$0.00	\$0.00



SETTLEMENTS REPORT
 March 2019 Close-Out Settlement
 December 6, 2019

4-Month Settlement Adjustment – Market Supply Analysis

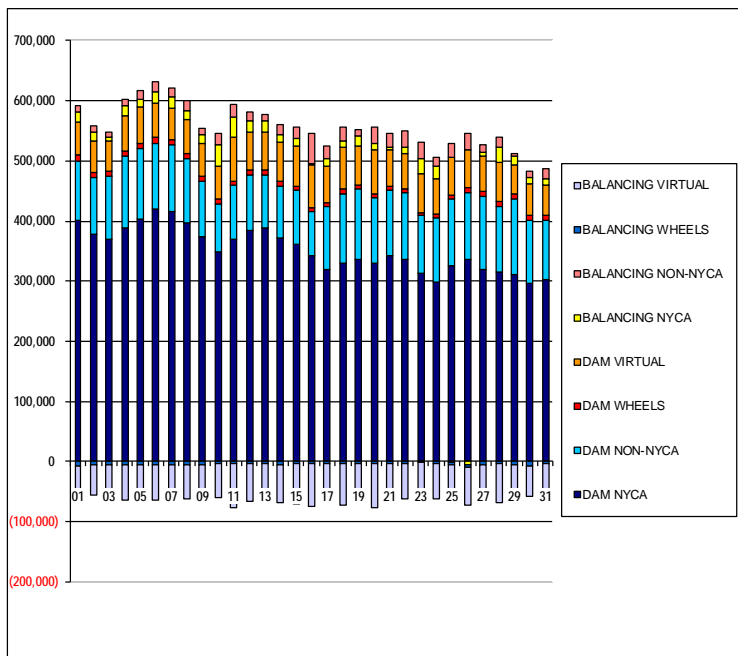
	MONDAY	TUESDAY	WEDNESDAY	THURSDAY	FRIDAY	SATURDAY	SUNDAY
					1	2	3
DAM NYCA					401,883	378,056	370,287
DAM NON-NYCA					98,817	94,984	104,430
DAM WHEELS					10,275	8,585	7,905
DAM VIRTUAL					54,225	51,782	50,224
BALANCING NYCA					16,480	14,615	5,887
BALANCING NON-NYCA					10,033	10,216	8,254
BALANCING WHEELS					(6,555)	(4,865)	(4,305)
BALANCING VIRTUAL					(54,225)	(51,782)	(50,224)
	4	5	6	7	8	9	10
DAM NYCA	387,697	403,552	419,770	415,840	396,371	373,417	349,368
DAM NON-NYCA	120,577	118,159	110,132	111,476	107,902	93,280	79,155
DAM WHEELS	7,996	8,305	8,760	8,782	8,632	8,386	7,431
DAM VIRTUAL	59,842	59,499	58,295	52,402	56,745	54,803	55,845
BALANCING NYCA	16,269	12,401	17,659	18,420	14,202	13,182	36,180
BALANCING NON-NYCA	9,637	14,941	17,085	14,844	17,446	10,554	18,390
BALANCING WHEELS	(4,396)	(4,705)	(5,160)	(5,182)	(5,048)	(4,786)	(4,056)
BALANCING VIRTUAL	(59,842)	(59,499)	(58,295)	(52,402)	(56,745)	(54,803)	(55,845)
	11	12	13	14	15	16	17
DAM NYCA	370,400	383,974	388,736	372,289	360,469	342,166	319,562
DAM NON-NYCA	88,976	93,561	88,816	85,955	90,470	73,330	104,877
DAM WHEELS	7,569	7,027	7,399	8,165	5,945	6,389	6,467
DAM VIRTUAL	72,071	63,658	62,645	64,528	68,179	72,481	59,617
BALANCING NYCA	33,379	18,724	18,431	11,974	12,425	377	13,234
BALANCING NON-NYCA	22,539	14,974	11,750	16,648	18,240	50,213	22,203
BALANCING WHEELS	(3,969)	(3,427)	(3,679)	(4,445)	(2,225)	(2,669)	(2,747)
BALANCING VIRTUAL	(72,071)	(63,658)	(62,645)	(64,528)	(68,179)	(72,481)	(59,617)
	18	19	20	21	22	23	24
DAM NYCA	329,478	336,597	329,123	341,901	335,656	312,852	297,719
DAM NON-NYCA	116,720	117,703	109,202	110,697	111,456	96,026	107,232
DAM WHEELS	7,633	6,455	6,917	5,800	6,010	5,412	6,749
DAM VIRTUAL	67,972	64,482	74,143	60,753	60,057	65,289	58,127
BALANCING NYCA	11,745	15,669	9,673	4,478	8,903	24,229	20,630
BALANCING NON-NYCA	23,801	11,410	27,872	21,201	27,460	27,483	15,993
BALANCING WHEELS	(3,913)	(2,735)	(3,197)	(2,200)	(2,410)	(1,812)	(3,149)
BALANCING VIRTUAL	(67,972)	(64,482)	(74,143)	(60,753)	(60,057)	(65,289)	(58,127)
	25	26	27	28	29	30	31
DAM NYCA	325,199	336,115	319,671	314,402	310,294	297,425	301,858
DAM NON-NYCA	111,576	111,674	121,639	110,874	126,417	103,007	100,074
DAM WHEELS	6,999	7,061	8,160	7,396	8,285	10,177	7,548
DAM VIRTUAL	62,408	63,453	58,231	64,948	48,235	50,508	49,489
BALANCING NYCA	(1,251)	(5,735)	6,292	25,751	14,240	11,698	10,742
BALANCING NON-NYCA	22,286	27,163	12,859	16,853	4,536	11,060	17,715
BALANCING WHEELS	(3,399)	(3,461)	(4,560)	(3,796)	(4,685)	(6,577)	(3,948)
BALANCING VIRTUAL	(62,408)	(63,453)	(58,231)	(64,948)	(48,235)	(50,508)	(49,489)



SETTLEMENTS REPORT
 March 2019 Close-Out Settlement
 December 6, 2019

Close-Out Settlement – Market Supply Analysis

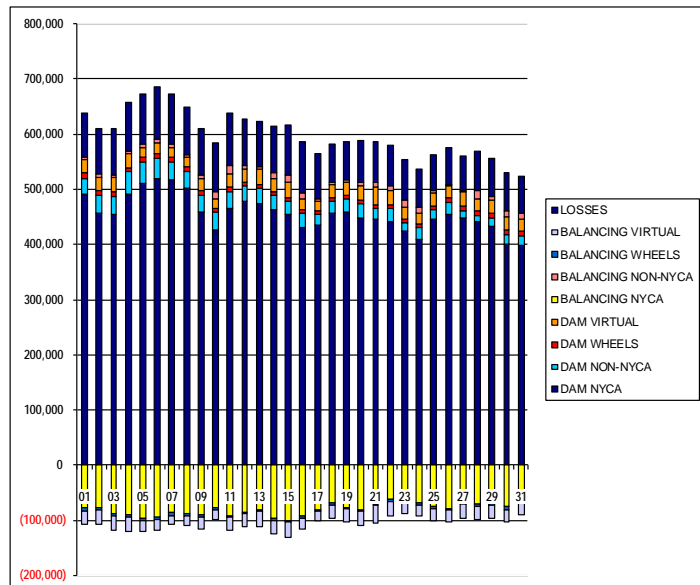
	MONDAY	TUESDAY	WEDNESDAY	THURSDAY	FRIDAY	SATURDAY	SUNDAY
					1	2	3
DAM NYCA					401,883	378,056	370,287
DAM NON-NYCA					98,817	94,984	104,430
DAM WHEELS					10,275	8,585	7,905
DAM VIRTUAL					54,225	51,782	50,224
BALANCING NYCA					16,480	14,615	5,887
BALANCING NON-NYCA					10,033	10,216	8,254
BALANCING WHEELS					(6,555)	(4,865)	(4,305)
BALANCING VIRTUAL					(54,225)	(51,782)	(50,224)
	4	5	6	7	8	9	10
DAM NYCA	387,697	403,552	419,770	415,840	396,371	373,417	349,368
DAM NON-NYCA	120,577	118,159	110,132	111,476	107,902	93,280	79,155
DAM WHEELS	7,996	8,305	8,760	8,782	8,632	8,386	7,431
DAM VIRTUAL	59,842	59,499	58,295	52,402	56,745	54,803	55,845
BALANCING NYCA	16,269	12,401	17,659	18,420	14,202	13,182	36,180
BALANCING NON-NYCA	9,637	14,941	17,085	14,844	17,446	10,554	18,390
BALANCING WHEELS	(4,396)	(4,705)	(5,160)	(5,182)	(5,048)	(4,786)	(4,056)
BALANCING VIRTUAL	(59,842)	(59,499)	(58,295)	(52,402)	(56,745)	(54,803)	(55,845)
	11	12	13	14	15	16	17
DAM NYCA	370,400	383,974	388,736	372,289	360,469	342,166	319,562
DAM NON-NYCA	88,976	93,561	88,816	85,955	90,470	73,330	104,877
DAM WHEELS	7,569	7,027	7,399	8,165	5,945	6,389	6,467
DAM VIRTUAL	72,071	63,658	62,645	64,528	68,179	72,481	59,617
BALANCING NYCA	33,379	18,724	18,431	11,974	12,425	377	13,234
BALANCING NON-NYCA	22,539	14,974	11,750	16,648	18,240	50,213	22,203
BALANCING WHEELS	(3,969)	(3,427)	(3,679)	(4,445)	(2,225)	(2,669)	(2,747)
BALANCING VIRTUAL	(72,071)	(63,658)	(62,645)	(64,528)	(68,179)	(72,481)	(59,617)
	18	19	20	21	22	23	24
DAM NYCA	329,478	336,597	329,123	341,901	335,656	312,852	297,719
DAM NON-NYCA	116,720	117,703	109,202	110,697	111,456	96,026	107,232
DAM WHEELS	7,633	6,455	6,917	5,800	6,010	5,412	6,749
DAM VIRTUAL	67,972	64,482	74,143	60,753	60,057	65,289	58,127
BALANCING NYCA	11,745	15,669	9,673	4,478	8,903	24,229	20,630
BALANCING NON-NYCA	23,801	11,410	27,872	21,201	27,460	27,483	15,993
BALANCING WHEELS	(3,913)	(2,735)	(3,197)	(2,200)	(2,410)	(1,812)	(3,149)
BALANCING VIRTUAL	(67,972)	(64,482)	(74,143)	(60,753)	(60,057)	(65,289)	(58,127)
	25	26	27	28	29	30	31
DAM NYCA	325,199	336,115	319,671	314,402	310,294	297,425	301,858
DAM NON-NYCA	111,576	111,674	121,639	110,874	126,417	103,007	100,074
DAM WHEELS	6,999	7,061	8,160	7,396	8,285	10,177	7,548
DAM VIRTUAL	62,408	63,453	58,231	64,948	48,235	50,508	49,489
BALANCING NYCA	(1,251)	(5,735)	6,292	25,751	14,240	11,698	10,742
BALANCING NON-NYCA	22,286	27,163	12,859	16,853	4,536	11,060	17,715
BALANCING WHEELS	(3,399)	(3,461)	(4,560)	(3,796)	(4,685)	(6,577)	(3,948)
BALANCING VIRTUAL	(62,408)	(63,453)	(58,231)	(64,948)	(48,235)	(50,508)	(49,489)



SETTLEMENTS REPORT
 March 2019 Close-Out Settlement
 December 6, 2019

4-Month Settlement Adjustment – Market Withdrawals Analysis

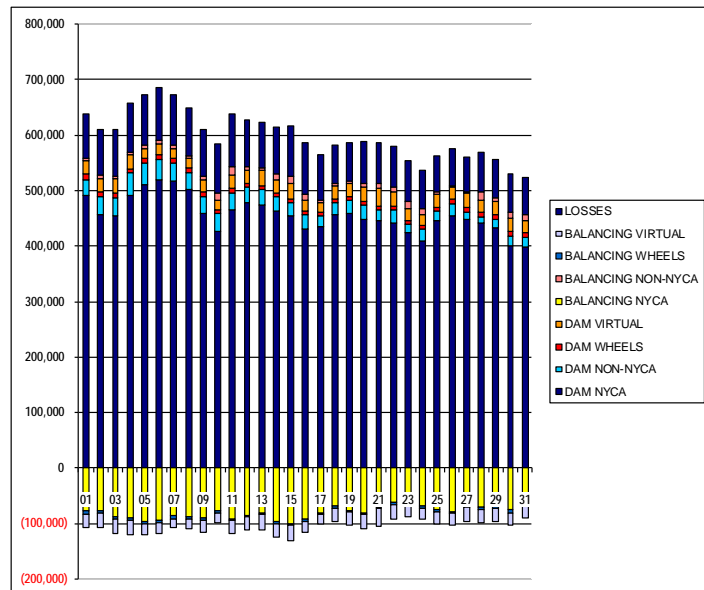
	MONDAY	TUESDAY	WEDNESDAY	THURSDAY	FRIDAY	SATURDAY	SUNDAY
					1	2	3
DAM NYCA					490,349	457,012	453,617
DAM NON-NYCA					28,708	31,353	34,420
DAM WHEELS					10,275	8,585	7,905
DAM VIRTUAL					25,348	25,642	26,218
BALANCING NYCA					(76,119)	(77,236)	(86,985)
BALANCING NON-NYCA					3,709	4,762	3,139
BALANCING WHEELS					(6,555)	(4,965)	(4,305)
BALANCING VIRTUAL					(25,348)	(25,642)	(26,218)
UFE/LOSSES					80,567	81,980	84,667
	4	5	6	7	8	9	10
DAM NYCA	491,715	511,056	520,076	517,489	501,424	458,915	427,428
DAM NON-NYCA	39,585	38,360	35,855	32,960	29,893	29,827	30,402
DAM WHEELS	7,996	8,305	8,760	8,782	8,632	8,386	7,431
DAM VIRTUAL	25,722	18,834	18,692	16,218	17,916	21,731	16,627
BALANCING NYCA	(90,210)	(95,932)	(93,930)	(86,577)	(87,088)	(90,006)	(77,054)
BALANCING NON-NYCA	3,326	4,772	7,796	6,407	5,501	6,312	12,927
BALANCING WHEELS	(4,396)	(4,705)	(5,160)	(5,182)	(5,048)	(4,786)	(4,056)
BALANCING VIRTUAL	(25,722)	(18,834)	(18,692)	(16,218)	(17,916)	(21,731)	(16,627)
UFE/LOSSES	89,763	90,797	94,849	90,300	86,191	85,384	89,389
	11	12	13	14	15	16	17
DAM NYCA	465,527	477,389	474,250	463,700	453,500	430,690	434,222
DAM NON-NYCA	31,046	28,570	27,611	24,406	25,326	25,419	20,144
DAM WHEELS	7,569	7,027	7,399	8,165	5,945	6,389	6,467
DAM VIRTUAL	23,425	23,955	27,362	23,581	27,204	19,735	16,580
BALANCING NYCA	(91,396)	(85,432)	(80,419)	(96,572)	(100,848)	(93,144)	(81,489)
BALANCING NON-NYCA	14,912	6,254	4,805	10,040	12,929	11,596	6,280
BALANCING WHEELS	(3,969)	(3,427)	(3,679)	(4,445)	(2,225)	(2,669)	(2,747)
BALANCING VIRTUAL	(23,425)	(23,955)	(27,362)	(23,581)	(27,204)	(19,735)	(16,580)
UFE/LOSSES	95,206	84,453	81,486	85,292	90,697	91,524	80,710
	18	19	20	21	22	23	24
DAM NYCA	455,922	458,067	447,738	445,855	442,350	423,549	410,029
DAM NON-NYCA	21,330	25,009	26,807	20,121	22,417	16,833	19,871
DAM WHEELS	7,633	6,455	6,917	5,800	6,010	5,412	6,749
DAM VIRTUAL	24,039	22,916	24,758	32,877	27,926	22,166	19,904
BALANCING NYCA	(68,513)	(76,490)	(80,861)	(69,607)	(63,010)	(64,944)	(69,334)
BALANCING NON-NYCA	3,943	3,990	6,526	8,850	7,489	12,288	10,421
BALANCING WHEELS	(3,913)	(2,735)	(3,197)	(2,200)	(2,410)	(1,812)	(3,149)
BALANCING VIRTUAL	(24,039)	(22,916)	(24,758)	(32,877)	(27,926)	(22,166)	(19,904)
UFE/LOSSES	69,063	70,803	75,660	73,057	74,229	72,864	70,587
	25	26	27	28	29	30	31
DAM NYCA	444,997	454,025	448,853	440,991	433,243	400,525	397,714
DAM NON-NYCA	18,223	22,684	13,218	12,012	14,687	16,675	18,656
DAM WHEELS	6,999	7,061	8,160	7,396	8,285	10,177	7,548
DAM VIRTUAL	23,194	21,685	24,900	23,127	23,966	21,781	22,430
BALANCING NYCA	(75,024)	(78,509)	(66,102)	(71,021)	(67,686)	(75,767)	(64,115)
BALANCING NON-NYCA	4,181	2,428	2,852	13,171	7,837	11,291	9,746
BALANCING WHEELS	(3,399)	(3,461)	(4,560)	(3,796)	(4,685)	(6,577)	(3,948)
BALANCING VIRTUAL	(23,194)	(21,685)	(24,900)	(23,127)	(23,966)	(21,781)	(22,430)
UFE/LOSSES	65,434	68,587	61,640	72,727	67,405	70,466	68,388



SETTLEMENTS REPORT
 March 2019 Close-Out Settlement
 December 6, 2019

Close-Out Settlement – Market Withdrawals Analysis

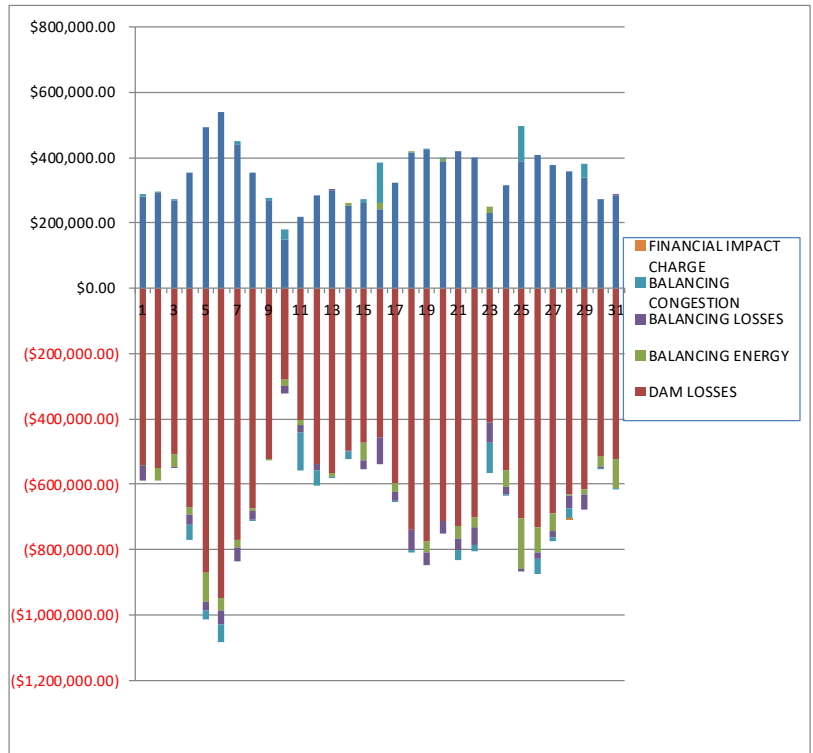
	MONDAY	TUESDAY	WEDNESDAY	THURSDAY	FRIDAY	SATURDAY	SUNDAY
					1	2	3
DAM NYCA					490,349	457,012	453,617
DAM NON-NYCA					28,708	31,353	34,420
DAM WHEELS					10,275	9,585	7,905
DAM VIRTUAL					25,348	25,642	26,218
BALANCING NYCA					(76,119)	(77,236)	(86,985)
BALANCING NON-NYCA					3,709	4,762	3,139
BALANCING WHEELS					(6,555)	(4,865)	(4,305)
BALANCING VIRTUAL					(25,348)	(25,642)	(26,218)
UFE/LOSSES					80,567	81,980	84,667
	4	5	6	7	8	9	10
DAM NYCA	491,715	511,056	520,076	517,489	501,424	458,915	427,428
DAM NON-NYCA	39,585	38,360	35,855	32,960	29,893	29,827	30,402
DAM WHEELS	7,996	8,305	8,760	8,782	8,632	8,386	7,431
DAM VIRTUAL	25,722	18,834	18,692	16,218	17,916	21,731	16,627
BALANCING NYCA	(90,210)	(95,932)	(93,930)	(86,577)	(87,088)	(90,006)	(77,054)
BALANCING NON-NYCA	3,326	4,772	7,796	6,407	5,501	6,312	12,927
BALANCING WHEELS	(4,396)	(4,705)	(5,160)	(5,182)	(5,048)	(4,786)	(4,056)
BALANCING VIRTUAL	(25,722)	(18,834)	(18,692)	(16,218)	(17,916)	(21,731)	(16,627)
UFE/LOSSES	89,763	90,797	94,849	90,300	86,191	85,384	89,389
	11	12	13	14	15	16	17
DAM NYCA	465,527	477,389	474,250	463,700	453,500	430,690	434,222
DAM NON-NYCA	31,046	28,570	27,611	24,406	25,326	25,419	20,144
DAM WHEELS	7,569	7,027	7,399	8,165	5,945	6,389	6,467
DAM VIRTUAL	23,425	23,955	27,362	23,581	27,204	19,735	16,580
BALANCING NYCA	(91,396)	(85,432)	(80,419)	(96,572)	(100,848)	(93,144)	(81,489)
BALANCING NON-NYCA	14,912	6,254	4,805	10,040	12,929	11,596	6,280
BALANCING WHEELS	(3,969)	(3,427)	(3,679)	(4,445)	(2,225)	(2,669)	(2,747)
BALANCING VIRTUAL	(23,425)	(23,955)	(27,362)	(23,581)	(27,204)	(19,735)	(16,580)
UFE/LOSSES	95,206	84,453	81,486	85,292	90,697	91,524	80,718
	18	19	20	21	22	23	24
DAM NYCA	455,922	458,067	447,738	445,855	442,350	423,549	410,029
DAM NON-NYCA	21,330	25,009	26,807	20,121	22,417	16,833	19,871
DAM WHEELS	7,633	6,455	6,917	5,800	6,010	5,412	6,749
DAM VIRTUAL	24,039	22,916	24,758	32,877	27,926	22,166	19,904
BALANCING NYCA	(68,513)	(76,490)	(80,861)	(69,606)	(63,010)	(64,944)	(69,334)
BALANCING NON-NYCA	3,943	3,990	6,526	8,850	7,489	12,288	10,421
BALANCING WHEELS	(3,913)	(2,735)	(3,197)	(2,200)	(2,410)	(1,812)	(3,149)
BALANCING VIRTUAL	(24,039)	(22,916)	(24,758)	(32,877)	(27,926)	(22,166)	(19,904)
UFE/LOSSES	69,063	70,803	75,660	73,057	74,229	72,864	70,587
	25	26	27	28	29	30	31
DAM NYCA	444,997	454,025	448,853	440,991	433,243	400,525	397,714
DAM NON-NYCA	18,223	22,684	13,218	12,012	14,687	16,675	18,656
DAM WHEELS	6,999	7,061	8,160	7,396	8,285	10,177	7,548
DAM VIRTUAL	23,194	21,685	24,900	23,127	23,966	21,781	22,430
BALANCING NYCA	(75,024)	(78,509)	(66,102)	(71,021)	(67,686)	(75,767)	(64,115)
BALANCING NON-NYCA	4,181	2,420	2,852	13,171	7,837	11,291	9,746
BALANCING WHEELS	(3,399)	(3,461)	(4,560)	(3,796)	(4,685)	(6,577)	(3,948)
BALANCING VIRTUAL	(23,194)	(21,685)	(24,900)	(23,127)	(23,966)	(21,781)	(22,430)
UFE/LOSSES	65,434	68,587	61,640	72,727	67,405	70,466	68,388



SETTLEMENTS REPORT
 March 2019 Close-Out Settlement
 December 6, 2019

4-Month Settlement Adjustment – Market Residuals Analysis

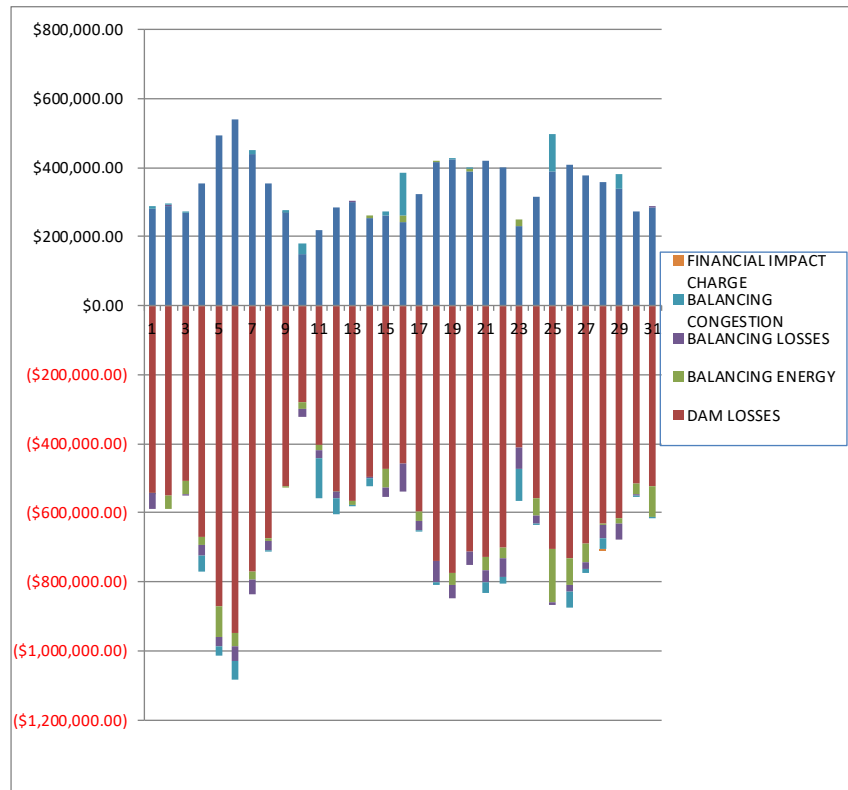
	MONDAY	TUESDAY	WEDNESDAY	THURSDAY	FRIDAY	SATURDAY	SUNDAY
					1	2	3
DAM ENERGY					\$279,677.73	\$290,022.76	\$269,750.88
DAM LOSSES					(\$541,639.05)	(\$549,773.83)	(\$506,770.50)
BALANCING ENERGY					(\$619.02)	(\$39,955.57)	(\$39,613.53)
BALANCING LOSSES					(\$47,538.63)	\$2,211.15	(\$4,650.04)
BALANCING CONGESTION					\$7,523.03	\$4,375.23	\$3,098.22
FINANCIAL IMPACT CHARGE					\$0.00	\$0.00	\$0.00
	4	5	6	7	8	9	10
DAM ENERGY	\$355,038.96	\$491,499.42	\$538,307.36	\$437,214.05	\$352,185.29	\$267,910.65	\$151,116.50
DAM LOSSES	(\$670,726.04)	(\$870,631.47)	(\$948,869.83)	(\$771,986.03)	(\$672,239.67)	(\$521,678.53)	(\$280,139.86)
BALANCING ENERGY	(\$20,946.41)	(\$88,368.08)	(\$36,482.60)	(\$20,842.36)	(\$9,669.51)	(\$6,916.70)	(\$17,240.43)
BALANCING LOSSES	(\$33,709.26)	(\$27,968.38)	(\$43,650.73)	(\$44,157.22)	(\$25,403.71)	\$2,029.39	(\$22,976.65)
BALANCING CONGESTION	(\$46,494.31)	(\$25,495.85)	(\$52,261.71)	\$12,118.58	(\$61.97)	\$5,508.85	\$29,176.51
FINANCIAL IMPACT CHARGE	\$0.00	\$0.00	\$0.00	\$0.00	\$0.00	(\$0.04)	\$0.00
	11	12	13	14	15	16	17
DAM ENERGY	\$217,539.25	\$284,517.22	\$298,455.20	\$254,147.99	\$262,635.65	\$242,983.98	\$323,507.17
DAM LOSSES	(\$404,760.72)	(\$537,681.56)	(\$565,669.50)	(\$494,702.91)	(\$473,445.41)	(\$457,339.95)	(\$596,802.14)
BALANCING ENERGY	(\$12,807.72)	(\$1,043.41)	(\$12,676.79)	\$5,481.07	(\$52,291.21)	\$16,395.12	(\$24,999.17)
BALANCING LOSSES	(\$24,074.64)	(\$18,406.54)	\$611.80	(\$5,162.04)	(\$26,235.57)	(\$79,821.09)	(\$27,717.26)
BALANCING CONGESTION	(\$114,950.94)	(\$46,584.58)	(\$2,592.61)	(\$24,410.48)	\$11,205.71	\$125,601.08	(\$1,671.83)
FINANCIAL IMPACT CHARGE	\$0.00	\$0.00	\$0.00	\$0.00	\$0.00	\$0.00	\$0.00
	18	19	20	21	22	23	24
DAM ENERGY	\$414,871.26	\$422,418.83	\$390,171.23	\$420,950.74	\$401,830.87	\$229,928.09	\$315,294.29
DAM LOSSES	(\$740,339.73)	(\$772,131.04)	(\$712,236.89)	(\$729,290.58)	(\$702,031.35)	(\$412,217.41)	(\$558,007.90)
BALANCING ENERGY	\$1,099.46	(\$38,255.01)	\$6,352.71	(\$35,686.10)	(\$31,010.96)	\$19,919.24	(\$51,595.88)
BALANCING LOSSES	(\$61,932.18)	(\$38,413.72)	(\$38,517.01)	(\$34,811.22)	(\$50,889.29)	(\$60,281.63)	(\$22,905.35)
BALANCING CONGESTION	(\$6,801.73)	\$2,048.92	\$5,710.74	(\$31,391.39)	(\$20,382.29)	(\$91,957.63)	(\$2,388.62)
FINANCIAL IMPACT CHARGE	\$0.00	\$0.00	\$0.00	\$0.00	\$0.00	\$0.00	\$0.00
	25	26	27	28	29	30	31
DAM ENERGY	\$388,020.48	\$408,375.96	\$375,478.73	\$357,136.03	\$339,310.69	\$273,820.70	\$285,783.18
DAM LOSSES	(\$704,469.56)	(\$731,352.77)	(\$689,662.73)	(\$632,149.98)	(\$614,206.87)	(\$513,795.63)	(\$521,625.22)
BALANCING ENERGY	(\$153,603.76)	(\$79,240.30)	(\$52,245.93)	(\$1,135.63)	(\$18,546.98)	(\$32,505.55)	(\$88,239.30)
BALANCING LOSSES	(\$7,439.81)	(\$18,429.50)	(\$21,174.92)	(\$39,216.37)	(\$43,941.53)	(\$4,231.41)	\$3,807.88
BALANCING CONGESTION	\$107,265.94	(\$44,639.70)	(\$12,414.80)	(\$31,980.65)	\$40,193.43	(\$674.50)	(\$1,459.96)
FINANCIAL IMPACT CHARGE	\$0.00	\$0.00	\$0.00	(\$1,042.61)	\$0.00	\$0.00	\$0.00



SETTLEMENTS REPORT
 March 2019 Close-Out Settlement
 December 6, 2019

Close-Out Settlement – Market Residuals Analysis

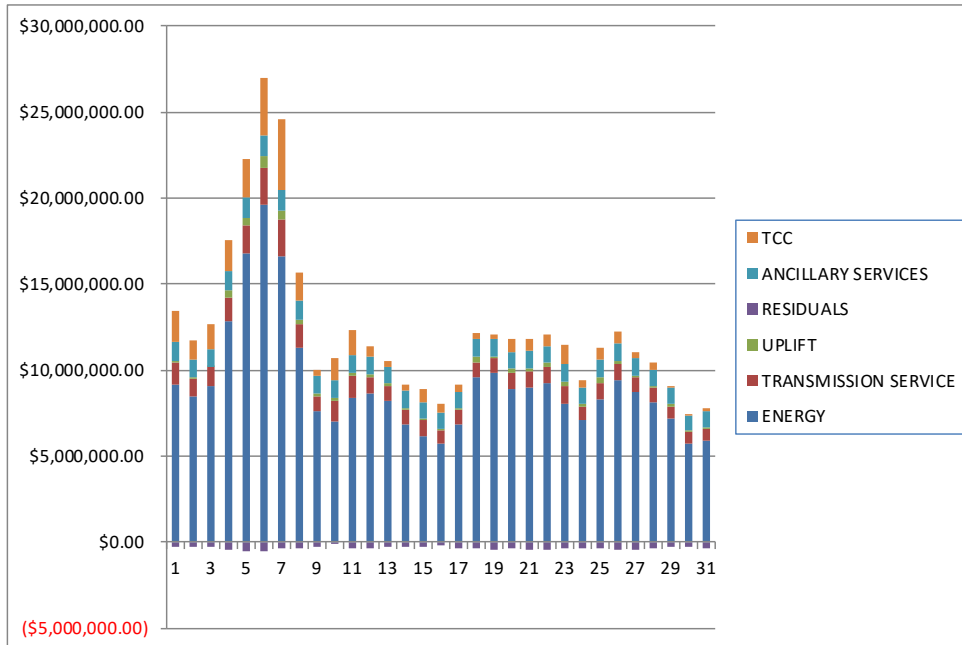
	MONDAY	TUESDAY	WEDNESDAY	THURSDAY	FRIDAY	SATURDAY	SUNDAY
					1	2	3
DAM ENERGY					\$279,677.73	\$290,022.76	\$269,750.89
DAM LOSSES					(\$541,639.06)	(\$549,773.83)	(\$506,770.50)
BALANCING ENERGY					(\$619.02)	(\$39,955.57)	(\$39,613.53)
BALANCING LOSSES					(\$47,538.63)	\$2,211.15	(\$4,650.04)
BALANCING CONGESTION					\$7,523.03	\$4,375.23	\$3,098.22
FINANCIAL IMPACT CHARGE					\$0.00	\$0.00	\$0.00
	4	5	6	7	8	9	10
DAM ENERGY	\$355,038.96	\$491,499.42	\$538,307.36	\$437,214.05	\$352,185.29	\$267,910.65	\$151,116.50
DAM LOSSES	(\$670,726.04)	(\$870,631.46)	(\$948,869.83)	(\$771,986.04)	(\$672,239.67)	(\$521,678.53)	(\$280,139.86)
BALANCING ENERGY	(\$20,946.41)	(\$88,368.08)	(\$36,482.59)	(\$20,842.36)	(\$9,669.52)	(\$6,916.70)	(\$17,240.43)
BALANCING LOSSES	(\$33,709.27)	(\$27,968.38)	(\$43,650.73)	(\$44,157.22)	(\$25,403.71)	\$2,029.39	(\$22,976.66)
BALANCING CONGESTION	(\$46,494.31)	(\$25,495.84)	(\$52,261.72)	\$12,118.57	(\$61.97)	\$5,508.85	\$29,176.51
FINANCIAL IMPACT CHARGE	\$0.00	\$0.00	\$0.00	\$0.00	\$0.00	(\$0.04)	\$0.00
	11	12	13	14	15	16	17
DAM ENERGY	\$217,539.25	\$284,517.22	\$298,455.20	\$254,147.99	\$262,635.65	\$242,983.98	\$323,507.18
DAM LOSSES	(\$404,760.72)	(\$537,681.57)	(\$565,669.50)	(\$494,702.91)	(\$473,445.41)	(\$457,339.95)	(\$596,802.14)
BALANCING ENERGY	(\$12,807.72)	(\$1,043.41)	(\$12,676.78)	\$5,481.07	(\$52,291.22)	\$16,395.12	(\$24,999.18)
BALANCING LOSSES	(\$24,074.65)	(\$18,406.55)	\$611.80	(\$5,162.04)	(\$26,235.57)	(\$79,821.09)	(\$27,717.25)
BALANCING CONGESTION	(\$114,950.94)	(\$46,584.58)	(\$2,592.61)	(\$24,410.48)	\$11,205.72	\$125,601.08	(\$1,671.83)
FINANCIAL IMPACT CHARGE	\$0.00	\$0.00	\$0.00	\$0.00	\$0.00	\$0.00	\$0.00
	18	19	20	21	22	23	24
DAM ENERGY	\$414,871.26	\$422,418.83	\$390,171.24	\$420,950.75	\$401,830.86	\$229,928.10	\$315,294.28
DAM LOSSES	(\$740,339.73)	(\$772,131.04)	(\$712,236.89)	(\$729,290.58)	(\$702,031.35)	(\$412,217.41)	(\$558,007.90)
BALANCING ENERGY	\$1,099.46	(\$38,255.01)	\$6,352.71	(\$35,686.11)	(\$31,010.96)	\$19,919.25	(\$51,595.88)
BALANCING LOSSES	(\$61,932.18)	(\$38,413.72)	(\$38,517.02)	(\$34,811.23)	(\$50,889.29)	(\$60,281.63)	(\$22,905.35)
BALANCING CONGESTION	(\$6,801.73)	\$2,048.92	\$5,710.74	(\$31,391.39)	(\$20,382.29)	(\$91,957.62)	(\$2,388.62)
FINANCIAL IMPACT CHARGE	\$0.00	\$0.00	\$0.00	\$0.00	\$0.00	\$0.00	\$0.00
	25	26	27	28	29	30	31
DAM ENERGY	\$388,020.48	\$408,375.95	\$375,478.73	\$357,136.04	\$339,310.69	\$273,820.70	\$285,783.18
DAM LOSSES	(\$704,469.56)	(\$731,352.78)	(\$689,662.74)	(\$632,149.98)	(\$614,206.88)	(\$513,795.63)	(\$521,625.21)
BALANCING ENERGY	(\$153,603.76)	(\$79,240.30)	(\$52,245.92)	(\$1,135.63)	(\$18,546.97)	(\$32,505.55)	(\$88,239.30)
BALANCING LOSSES	(\$7,439.81)	(\$18,429.49)	(\$21,174.92)	(\$39,216.37)	(\$43,941.53)	(\$4,231.41)	\$3,807.88
BALANCING CONGESTION	\$107,265.94	(\$44,639.71)	(\$12,414.79)	(\$31,980.65)	\$40,193.44	(\$674.50)	(\$1,459.96)
FINANCIAL IMPACT CHARGE	\$0.00	\$0.00	\$0.00	(\$1,042.62)	\$0.00	\$0.00	\$0.00



SETTLEMENTS REPORT
 March 2019 Close-Out Settlement
 December 6, 2019

4-Month Settlement Adjustment – Market Costs Analysis

	MONDAY	TUESDAY	WEDNESDAY	THURSDAY	FRIDAY	SATURDAY	SUNDAY
					1	2	3
ENERGY					\$9,141,697.18	\$8,510,130.74	\$9,044,784.04
TRANSMISSION SERVICE					\$1,309,494.30	\$1,028,608.80	\$1,125,979.27
UPLIFT					\$96,647.22	\$52,423.87	\$57,686.09
RESIDUALS					(\$302,595.94)	(\$293,120.26)	(\$278,184.97)
ANCILLARY SERVICES					\$1,061,764.54	\$1,001,447.58	\$993,640.50
TCC					\$1,807,325.73	\$1,131,088.95	\$1,416,554.04
	4	5	6	7	8	9	10
ENERGY	\$12,854,475.29	\$16,801,505.69	\$19,574,141.21	\$16,585,781.13	\$11,303,437.72	\$7,596,364.18	\$7,050,663.75
TRANSMISSION SERVICE	\$1,357,686.94	\$1,643,059.71	\$2,154,110.62	\$2,187,693.35	\$1,328,813.62	\$886,730.21	\$1,201,054.33
UPLIFT	\$406,248.60	\$419,792.27	\$670,378.25	\$513,498.86	\$298,391.27	\$170,875.98	\$171,880.68
RESIDUALS	(\$416,837.06)	(\$520,964.36)	(\$542,957.51)	(\$387,652.98)	(\$355,189.57)	(\$253,146.38)	(\$140,063.93)
ANCILLARY SERVICES	\$1,112,221.75	\$1,186,832.97	\$1,225,699.14	\$1,220,731.99	\$1,084,858.71	\$978,203.39	\$960,209.80
TCC	\$1,788,571.84	\$2,228,103.71	\$3,346,676.91	\$4,093,353.07	\$1,666,404.69	\$420,702.08	\$1,340,744.33
	11	12	13	14	15	16	17
ENERGY	\$8,394,652.33	\$8,617,496.31	\$8,245,627.77	\$6,841,936.30	\$6,142,125.55	\$5,718,896.11	\$6,867,579.73
TRANSMISSION SERVICE	\$1,288,006.57	\$962,119.33	\$817,006.76	\$841,971.23	\$916,551.40	\$793,800.11	\$856,420.95
UPLIFT	\$157,859.10	\$176,768.39	\$149,829.21	\$131,905.66	\$156,320.21	\$65,369.92	\$74,305.61
RESIDUALS	(\$339,054.77)	(\$319,198.87)	(\$281,871.90)	(\$264,646.37)	(\$278,130.83)	(\$152,180.86)	(\$327,683.23)
ANCILLARY SERVICES	\$1,033,517.60	\$1,010,902.06	\$992,607.12	\$962,397.43	\$956,423.27	\$970,262.56	\$970,152.67
TCC	\$1,490,092.34	\$619,423.56	\$291,157.53	\$337,146.64	\$768,580.27	\$492,182.78	\$353,022.39
	18	19	20	21	22	23	24
ENERGY	\$9,583,338.97	\$9,814,039.69	\$8,933,220.87	\$9,011,919.28	\$9,263,482.54	\$8,019,547.05	\$7,100,268.86
TRANSMISSION SERVICE	\$902,080.69	\$846,031.27	\$900,210.56	\$898,858.18	\$947,025.55	\$1,029,923.74	\$814,673.57
UPLIFT	\$294,202.20	\$88,568.70	\$238,608.66	\$199,872.94	\$204,880.82	\$313,763.33	\$142,983.44
RESIDUALS	(\$393,102.92)	(\$424,332.02)	(\$348,519.22)	(\$410,228.55)	(\$402,483.02)	(\$314,609.34)	(\$319,603.46)
ANCILLARY SERVICES	\$1,038,419.72	\$1,049,127.00	\$988,380.90	\$986,155.81	\$996,489.20	\$969,844.91	\$956,584.12
TCC	\$297,343.17	\$315,078.99	\$714,723.95	\$722,622.63	\$683,655.76	\$1,142,856.97	\$362,895.75
	25	26	27	28	29	30	31
ENERGY	\$8,302,357.35	\$9,449,419.55	\$8,738,717.75	\$8,103,457.27	\$7,178,451.41	\$5,755,810.05	\$5,920,228.83
TRANSMISSION SERVICE	\$902,434.33	\$912,430.60	\$834,795.41	\$855,119.81	\$725,696.27	\$649,922.04	\$670,900.41
UPLIFT	\$360,050.72	\$125,190.82	\$120,052.09	\$103,350.46	\$108,289.38	\$59,803.15	\$74,443.98
RESIDUALS	(\$370,226.71)	(\$465,286.31)	(\$400,019.65)	(\$348,389.21)	(\$297,191.26)	(\$277,386.39)	(\$321,733.42)
ANCILLARY SERVICES	\$1,006,961.52	\$1,046,440.71	\$1,016,722.43	\$985,652.41	\$973,536.27	\$901,442.85	\$930,672.32
TCC	\$711,088.88	\$688,983.08	\$305,911.86	\$426,244.73	\$117,125.07	\$78,824.58	\$157,872.84



SETTLEMENTS REPORT
 March 2019 Close-Out Settlement
 December 6, 2019

Close-Out Settlement – Market Costs Analysis

	MONDAY	TUESDAY	WEDNESDAY	THURSDAY	FRIDAY	SATURDAY	SUNDAY
					1	2	3
ENERGY					\$9,141,697.51	\$8,510,130.57	\$9,044,784.06
TRANSMISSION SERVICE					\$1,309,491.49	\$1,028,606.01	\$1,125,976.45
UPLIFT					\$96,647.23	\$52,423.87	\$57,686.10
RESIDUALS					(\$302,595.95)	(\$293,120.26)	(\$278,184.96)
ANCILLARY SERVICES					\$1,061,761.39	\$1,001,444.44	\$993,637.32
TCC					\$1,807,325.73	\$1,131,088.95	\$1,416,554.04
	4	5	6	7	8	9	10
ENERGY	\$12,854,475.48	\$16,801,505.54	\$19,574,141.29	\$16,585,781.48	\$11,303,437.53	\$7,596,364.54	\$7,050,663.58
TRANSMISSION SERVICE	\$1,357,684.15	\$1,643,056.69	\$2,154,107.28	\$2,187,690.32	\$1,328,810.81	\$886,728.14	\$1,201,051.79
UPLIFT	\$406,248.61	\$419,792.28	\$670,378.24	\$513,498.86	\$298,391.28	\$170,875.98	\$171,880.68
RESIDUALS	(\$416,837.07)	(\$520,964.34)	(\$542,957.51)	(\$387,653.00)	(\$355,189.58)	(\$253,146.38)	(\$140,063.94)
ANCILLARY SERVICES	\$1,112,218.60	\$1,186,829.58	\$1,225,695.37	\$1,220,728.58	\$1,084,855.55	\$978,201.05	\$960,206.93
TCC	\$1,788,571.84	\$2,228,103.71	\$3,346,676.91	\$4,093,353.07	\$1,666,404.69	\$420,702.08	\$1,340,744.33
	11	12	13	14	15	16	17
ENERGY	\$8,394,652.27	\$8,617,496.21	\$8,245,628.04	\$6,841,936.34	\$6,142,125.68	\$5,718,896.05	\$6,867,579.34
TRANSMISSION SERVICE	\$1,288,007.31	\$962,118.24	\$817,004.31	\$841,968.79	\$916,549.18	\$793,797.78	\$856,418.86
UPLIFT	\$157,859.10	\$176,768.38	\$149,829.23	\$131,905.65	\$156,320.20	\$65,369.90	\$74,305.60
RESIDUALS	(\$339,054.78)	(\$319,198.89)	(\$281,871.89)	(\$264,646.37)	(\$278,130.83)	(\$152,180.86)	(\$327,683.22)
ANCILLARY SERVICES	\$1,033,518.42	\$1,010,900.83	\$992,604.36	\$962,394.68	\$956,420.76	\$970,259.93	\$970,150.33
TCC	\$1,490,092.34	\$619,423.56	\$291,157.53	\$337,146.64	\$768,580.27	\$492,182.78	\$353,022.39
	18	19	20	21	22	23	24
ENERGY	\$9,583,339.01	\$9,814,039.81	\$8,933,220.69	\$9,011,919.15	\$9,263,482.65	\$8,019,547.46	\$7,100,268.89
TRANSMISSION SERVICE	\$902,079.23	\$846,029.44	\$900,208.72	\$898,856.36	\$947,024.00	\$1,029,922.21	\$814,671.88
UPLIFT	\$294,202.21	\$88,568.69	\$238,608.67	\$199,872.95	\$204,880.82	\$313,763.33	\$142,983.41
RESIDUALS	(\$393,102.92)	(\$424,332.02)	(\$348,519.22)	(\$410,228.56)	(\$402,483.03)	(\$314,609.31)	(\$319,603.47)
ANCILLARY SERVICES	\$1,038,418.08	\$1,049,124.94	\$988,378.84	\$986,153.74	\$996,487.46	\$969,843.21	\$956,582.21
TCC	\$297,343.17	\$315,078.99	\$714,723.95	\$722,622.63	\$683,655.76	\$1,142,856.97	\$362,895.75
	25	26	27	28	29	30	31
ENERGY	\$8,302,357.13	\$9,449,419.51	\$8,738,717.96	\$8,103,457.49	\$7,178,451.56	\$5,755,809.97	\$5,920,229.13
TRANSMISSION SERVICE	\$902,432.35	\$912,428.15	\$834,792.94	\$855,112.60	\$725,689.64	\$649,917.27	\$670,895.95
UPLIFT	\$360,050.65	\$125,190.80	\$120,052.09	\$103,350.46	\$108,289.37	\$59,803.15	\$74,443.98
RESIDUALS	(\$370,226.71)	(\$465,286.33)	(\$400,019.64)	(\$348,389.21)	(\$297,191.25)	(\$277,386.39)	(\$321,733.41)
ANCILLARY SERVICES	\$1,006,959.30	\$1,046,437.96	\$1,016,719.65	\$985,644.31	\$973,528.81	\$901,437.46	\$930,667.29
TCC	\$711,088.88	\$688,983.08	\$305,911.86	\$426,244.73	\$117,125.07	\$78,824.58	\$157,872.84

