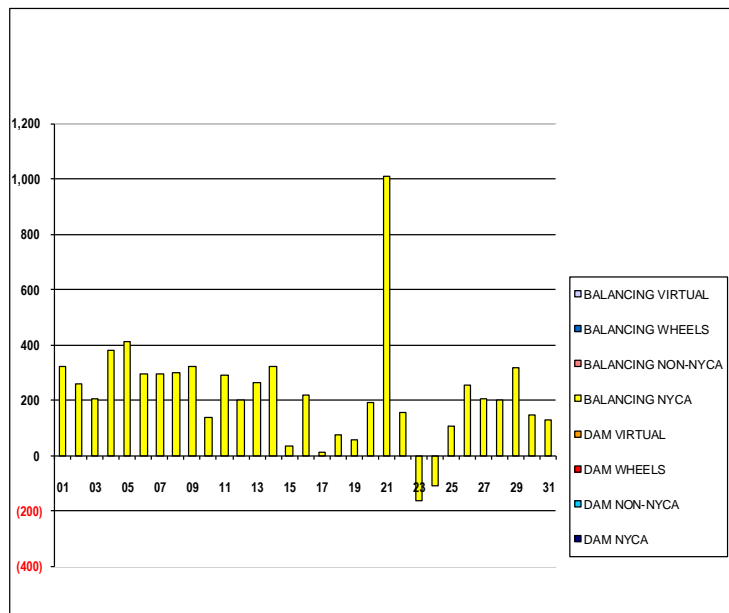


SETTLEMENTS REPORT  
 July 2019 Settlement Adjustment  
 December 6, 2019

**Settlement Adjustment – Market Supply Delta Analysis**

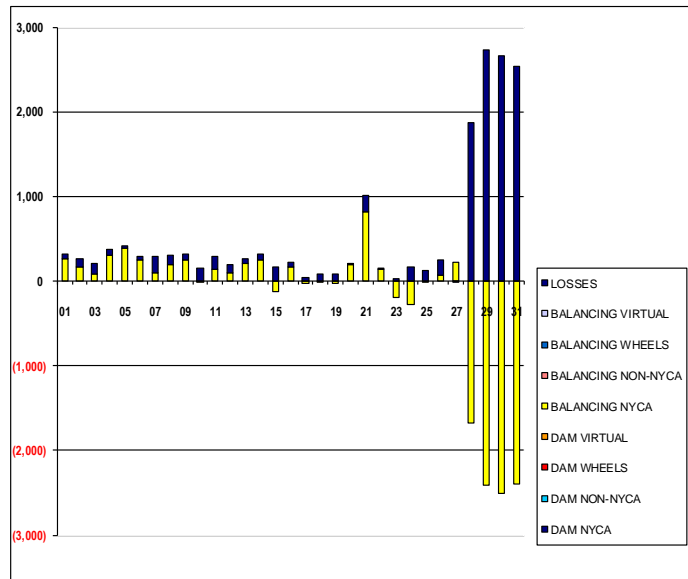
	MONDAY	TUESDAY	WEDNESDAY	THURSDAY	FRIDAY	SATURDAY	SUNDAY
	1	2	3	4	5	6	7
DAM NYCA	0	0	0	0	0	0	0
DAM NON-NYCA	0	0	0	0	0	0	0
DAM WHEELS	0	0	0	0	0	0	0
DAM VIRTUAL	0	0	0	0	0	0	0
BALANCING NYCA	320	257	205	381	410	295	293
BALANCING NON-NYCA	0	0	0	0	0	0	0
BALANCING WHEELS	0	0	0	0	0	0	0
BALANCING VIRTUAL	0	0	0	0	0	0	0
	<b>8</b>	<b>9</b>	<b>10</b>	<b>11</b>	<b>12</b>	<b>13</b>	<b>14</b>
DAM NYCA	0	0	0	0	0	0	0
DAM NON-NYCA	0	0	0	0	0	0	0
DAM WHEELS	0	0	0	0	0	0	0
DAM VIRTUAL	0	0	0	0	0	0	0
BALANCING NYCA	300	323	135	288	199	261	323
BALANCING NON-NYCA	0	0	0	0	0	0	0
BALANCING WHEELS	0	0	0	0	0	0	0
BALANCING VIRTUAL	0	0	0	0	0	0	0
	<b>15</b>	<b>16</b>	<b>17</b>	<b>18</b>	<b>19</b>	<b>20</b>	<b>21</b>
DAM NYCA	0	0	0	0	0	0	0
DAM NON-NYCA	0	0	0	0	0	0	0
DAM WHEELS	0	0	0	0	0	0	0
DAM VIRTUAL	0	0	0	0	0	0	0
BALANCING NYCA	35	216	11	74	58	191	1,009
BALANCING NON-NYCA	0	0	0	0	0	0	0
BALANCING WHEELS	0	0	0	0	0	0	0
BALANCING VIRTUAL	0	0	0	0	0	0	0
	<b>22</b>	<b>23</b>	<b>24</b>	<b>25</b>	<b>26</b>	<b>27</b>	<b>28</b>
DAM NYCA	0	0	0	0	0	0	0
DAM NON-NYCA	0	0	0	0	0	0	0
DAM WHEELS	0	0	0	0	0	0	0
DAM VIRTUAL	0	0	0	0	0	0	0
BALANCING NYCA	156	(164)	(108)	107	254	203	201
BALANCING NON-NYCA	0	0	0	0	0	0	0
BALANCING WHEELS	0	0	0	0	0	0	0
BALANCING VIRTUAL	0	0	0	0	0	0	0
	<b>29</b>	<b>30</b>	<b>31</b>				
DAM NYCA	0	0	0				
DAM NON-NYCA	0	0	0				
DAM WHEELS	0	0	0				
DAM VIRTUAL	0	0	0				
BALANCING NYCA	318	144	129				
BALANCING NON-NYCA	0	0	0				
BALANCING WHEELS	0	0	0				
BALANCING VIRTUAL	0	0	0				



SETTLEMENTS REPORT  
 July 2019 Settlement Adjustment  
 December 6, 2019

**Settlement Adjustment – Market Withdrawals Delta Analysis**

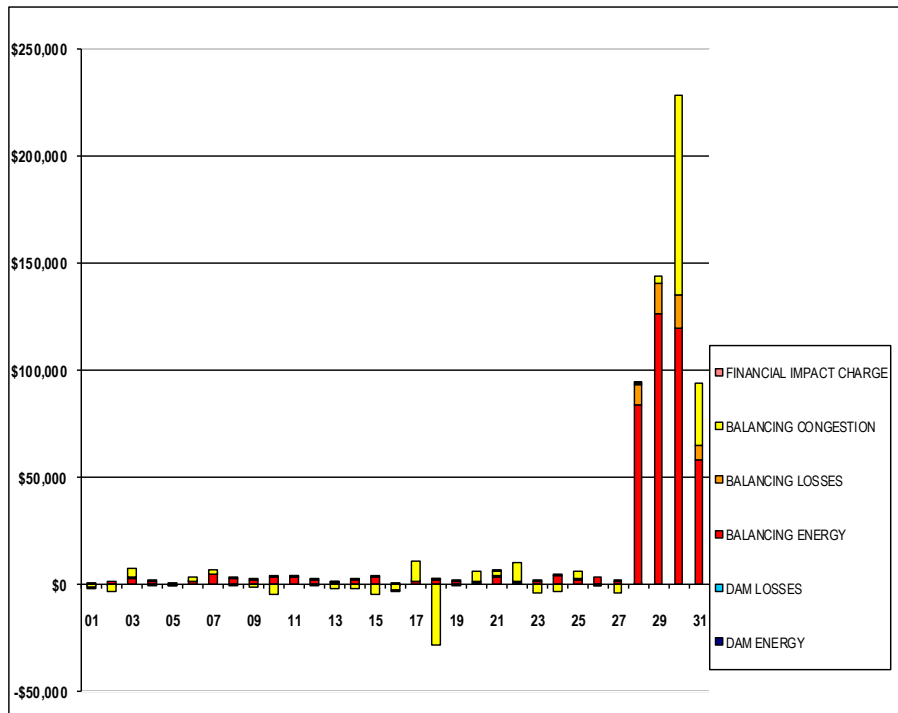
	MONDAY	TUESDAY	WEDNESDAY	THURSDAY	FRIDAY	SATURDAY	SUNDAY
	1	2	3	4	5	6	7
DAM NYCA	0	0	0	0	0	0	0
DAM NON-NYCA	0	0	0	0	0	0	0
DAM WHEELS	0	0	0	0	0	0	0
DAM VIRTUAL	0	0	0	0	0	0	0
BALANCING NYCA	262	162	83	307	385	245	102
BALANCING NON-NYCA	0	0	0	0	0	0	0
BALANCING WHEELS	0	0	0	0	0	0	0
BALANCING VIRTUAL	0	0	0	0	0	0	0
UFE/LOSSES	58	95	122	73	25	50	191
	8	9	10	11	12	13	14
DAM NYCA	0	0	0	0	0	0	0
DAM NON-NYCA	0	0	0	0	0	0	0
DAM WHEELS	0	0	0	0	0	0	0
DAM VIRTUAL	0	0	0	0	0	0	0
BALANCING NYCA	188	248	(14)	145	103	214	253
BALANCING NON-NYCA	0	0	0	0	0	0	0
BALANCING WHEELS	0	0	0	0	0	0	0
BALANCING VIRTUAL	0	0	0	0	0	0	0
UFE/LOSSES	112	75	149	143	95	47	70
	15	16	17	18	19	20	21
DAM NYCA	0	0	0	0	0	0	0
DAM NON-NYCA	0	0	0	0	0	0	0
DAM WHEELS	0	0	0	0	0	0	0
DAM VIRTUAL	0	0	0	0	0	0	0
BALANCING NYCA	(127)	160	(24)	(10)	(30)	189	819
BALANCING NON-NYCA	0	0	0	0	0	0	0
BALANCING WHEELS	0	0	0	0	0	0	0
BALANCING VIRTUAL	0	0	0	0	0	0	0
UFE/LOSSES	163	67	35	84	88	1	190
	22	23	24	25	26	27	28
DAM NYCA	0	0	0	0	0	0	0
DAM NON-NYCA	0	0	0	0	0	0	0
DAM WHEELS	0	0	0	0	0	0	0
DAM VIRTUAL	0	0	0	0	0	0	0
BALANCING NYCA	142	(194)	(280)	(18)	74	220	(1,673)
BALANCING NON-NYCA	0	0	0	0	0	0	0
BALANCING WHEELS	0	0	0	0	0	0	0
BALANCING VIRTUAL	0	0	0	0	0	0	0
UFE/LOSSES	14	30	172	125	180	(17)	1,874
	29	30	31				
DAM NYCA	0	0	0				
DAM NON-NYCA	0	0	0				
DAM WHEELS	0	0	0				
DAM VIRTUAL	0	0	0				
BALANCING NYCA	(2,414)	(2,513)	(2,399)				
BALANCING NON-NYCA	0	0	0				
BALANCING WHEELS	0	0	0				
BALANCING VIRTUAL	0	0	0				
UFE/LOSSES	2,733	2,657	2,529				



SETTLEMENTS REPORT  
 July 2019 Settlement Adjustment  
 December 6, 2019

**Settlement Adjustment – Market Residuals Delta Analysis**

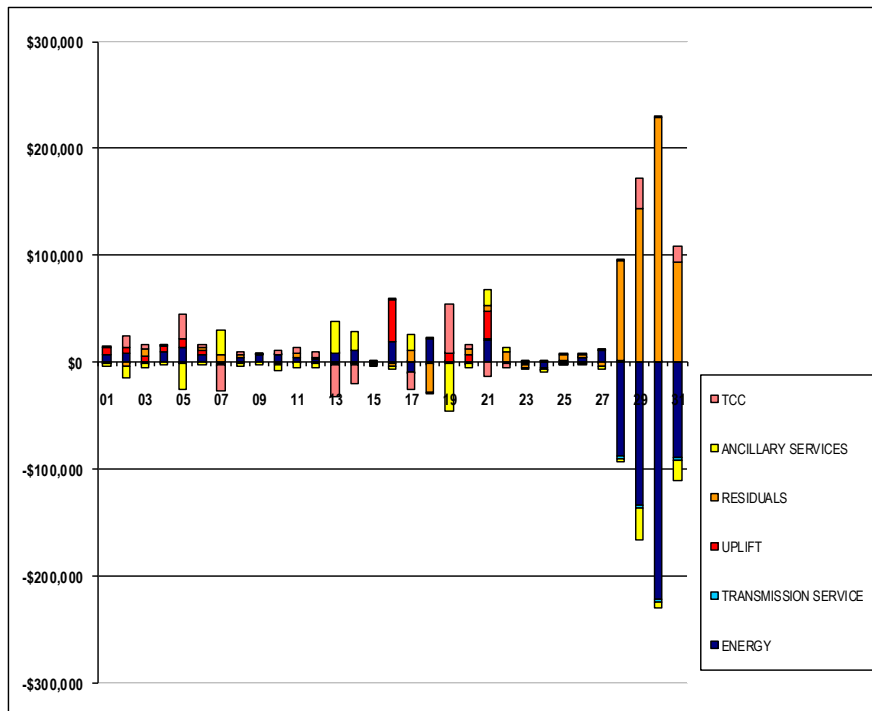
	MONDAY	TUESDAY	WEDNESDAY	THURSDAY	FRIDAY	SATURDAY	SUNDAY
	1	2	3	4	5	6	7
DAM ENERGY	\$0.00	\$0.00	\$0.00	\$0.00	\$0.00	(\$0.01)	\$0.00
DAM LOSSES	\$0.00	\$0.00	\$0.00	\$0.00	\$0.00	\$0.00	\$0.00
BALANCING ENERGY	\$571.48	\$778.03	\$2,384.06	\$1,057.34	\$342.89	\$749.04	\$4,251.09
BALANCING LOSSES	(\$52.93)	(\$61.61)	\$332.98	\$110.84	(\$65.80)	\$6.41	\$75.98
BALANCING CONGESTION	(\$1,663.16)	(\$3,669.32)	\$4,119.97	(\$351.58)	(\$1,230.13)	\$2,139.24	\$1,921.71
FINANCIAL IMPACT CHARGE	(\$0.04)	(\$0.04)	\$0.00	\$0.00	\$0.00	\$0.00	\$0.00
	8	9	10	11	12	13	14
DAM ENERGY	\$0.00	(\$0.01)	\$0.01	\$0.00	\$0.00	\$0.00	(\$0.01)
DAM LOSSES	\$0.00	\$0.01	\$0.00	\$0.00	\$0.00	\$0.00	\$0.00
BALANCING ENERGY	\$2,175.58	\$1,405.38	\$3,052.05	\$2,878.77	\$1,823.02	\$30.77	\$1,457.86
BALANCING LOSSES	\$60.70	\$97.67	\$179.65	\$22.43	\$275.22	\$58.31	\$101.48
BALANCING CONGESTION	(\$120.09)	(\$1,490.75)	(\$5,296.94)	\$395.68	(\$338.93)	(\$2,124.62)	(\$2,626.39)
FINANCIAL IMPACT CHARGE	\$0.00	\$0.00	\$0.00	\$0.00	\$0.00	\$0.08	\$0.00
	15	16	17	18	19	20	21
DAM ENERGY	\$0.00	\$0.00	\$0.00	\$0.01	\$0.00	\$0.00	\$0.00
DAM LOSSES	(\$0.01)	\$0.01	\$0.00	\$0.00	\$0.00	\$0.00	\$0.00
BALANCING ENERGY	\$2,987.41	(\$202.56)	\$956.52	\$1,446.12	\$1,228.70	\$480.50	\$3,106.43
BALANCING LOSSES	\$217.00	\$174.99	\$309.28	\$313.86	\$220.10	\$409.66	\$609.59
BALANCING CONGESTION	(\$4,820.02)	(\$3,058.82)	\$9,472.64	(\$28,753.77)	(\$647.99)	\$4,942.21	\$2,114.29
FINANCIAL IMPACT CHARGE	\$0.00	(\$0.07)	\$0.00	\$0.07	\$0.00	\$0.00	\$0.13
	22	23	24	25	26	27	28
DAM ENERGY	\$0.00	\$0.00	\$0.00	\$0.00	(\$0.01)	\$0.00	\$0.01
DAM LOSSES	\$0.01	\$0.00	\$0.01	\$0.01	\$0.00	\$0.00	\$0.01
BALANCING ENERGY	\$411.99	\$1,104.60	\$3,572.13	\$1,813.01	\$3,056.62	\$729.83	\$83,318.93
BALANCING LOSSES	\$283.49	\$220.50	\$268.64	\$215.07	(\$25.79)	\$33.04	\$9,896.43
BALANCING CONGESTION	\$8,913.32	(\$4,526.19)	(\$3,646.08)	\$3,557.06	(\$443.76)	(\$4,652.38)	\$210.28
FINANCIAL IMPACT CHARGE	\$0.00	\$0.00	\$0.00	\$0.00	\$0.00	\$0.01	\$0.06
	29	30	31				
DAM ENERGY	\$0.00	\$0.00	\$0.00				
DAM LOSSES	\$0.00	(\$0.01)	\$0.00				
BALANCING ENERGY	\$125,924.40	\$119,488.05	\$57,900.85				
BALANCING LOSSES	\$14,305.45	\$15,318.97	\$6,399.67				
BALANCING CONGESTION	\$3,654.50	\$93,517.84	\$29,044.48				
FINANCIAL IMPACT CHARGE	\$0.00	\$0.00	\$0.00				



**SETTLEMENTS REPORT**  
**July 2019 Settlement Adjustment**  
**December 6, 2019**

**4-Month Settlement Adjustment – Market Costs Delta Analysis**

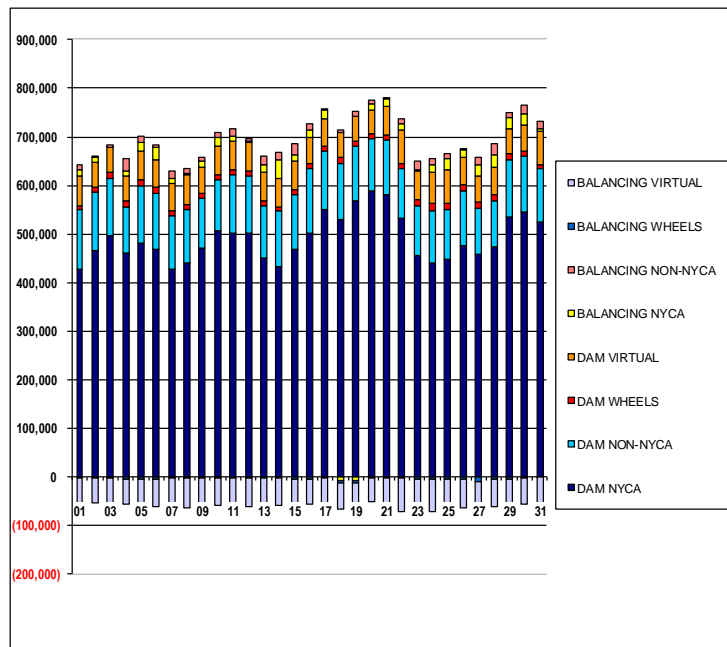
	MONDAY	TUESDAY	WEDNESDAY	THURSDAY	FRIDAY	SATURDAY	SUNDAY
	1	2	3	4	5	6	7
ENERGY	\$6,216.45	\$7,490.34	(\$802.94)	\$9,114.54	\$13,849.40	\$7,106.55	(\$1,419.67)
TRANSMISSION SERVICE	(\$463.43)	(\$521.95)	(\$628.98)	(\$510.27)	(\$302.72)	(\$536.36)	(\$744.24)
UPLIFT	\$6,923.39	\$5,389.45	\$5,259.93	\$5,261.98	\$7,329.98	\$4,084.76	(\$500.52)
RESIDUALS	(\$1,144.65)	(\$2,952.94)	\$6,837.01	\$816.60	(\$953.04)	\$2,894.68	\$6,248.78
ANCILLARY SERVICES	(\$2,176.54)	(\$11,925.48)	(\$4,282.72)	(\$1,861.99)	(\$24,409.57)	(\$2,604.89)	\$23,666.95
TCC	\$1,827.22	\$11,512.18	\$3,921.40	\$1,306.61	\$23,540.07	\$2,108.31	(\$23,828.99)
	8	9	10	11	12	13	14
ENERGY	\$4,404.15	\$6,973.23	\$6,405.92	\$4,673.66	\$2,706.27	\$7,826.82	\$10,357.60
TRANSMISSION SERVICE	(\$675.31)	(\$594.34)	(\$709.79)	(\$537.69)	(\$642.29)	(\$719.87)	(\$590.91)
UPLIFT	(\$16.64)	\$0.72	\$348.01	(\$78.16)	(\$316.15)	\$343.69	(\$844.70)
RESIDUALS	\$2,116.19	\$12.30	(\$2,065.23)	\$3,296.88	\$1,759.31	(\$2,035.46)	(\$1,067.06)
ANCILLARY SERVICES	(\$3,088.58)	(\$1,877.26)	(\$4,726.91)	(\$5,118.60)	(\$4,774.16)	\$29,198.71	\$18,029.67
TCC	\$2,712.08	\$1,370.19	\$4,668.41	\$5,345.61	\$4,689.24	(\$29,779.33)	(\$17,889.98)
	15	16	17	18	19	20	21
ENERGY	\$451.32	\$19,088.21	(\$8,995.05)	\$21,706.71	\$207.21	(\$927.66)	\$20,691.10
TRANSMISSION SERVICE	(\$1,122.36)	(\$887.67)	(\$955.17)	(\$1,071.24)	(\$783.87)	(\$271.08)	\$351.38
UPLIFT	(\$127.76)	\$38,673.84	\$245.61	(\$25.07)	\$7,420.00	\$6,169.51	\$26,178.59
RESIDUALS	(\$1,615.62)	(\$3,086.45)	\$10,738.44	(\$26,993.71)	\$800.81	\$5,832.37	\$5,830.44
ANCILLARY SERVICES	(\$837.48)	(\$3,265.09)	\$14,938.78	(\$1,078.47)	(\$45,665.14)	(\$4,619.02)	\$14,756.89
TCC	\$696.07	\$2,499.29	(\$15,870.00)	\$579.81	\$45,300.90	\$4,391.54	(\$14,133.11)
	22	23	24	25	26	27	28
ENERGY	(\$1,217.40)	(\$1,464.52)	(\$5,411.90)	\$1,430.62	\$3,801.31	\$10,430.15	(\$87,676.70)
TRANSMISSION SERVICE	(\$668.14)	(\$1,276.33)	(\$1,319.13)	(\$928.94)	(\$755.62)	(\$520.72)	(\$2,548.34)
UPLIFT	(\$0.01)	\$6.36	(\$508.43)	(\$0.22)	\$2.51	\$6.79	\$1,590.12
RESIDUALS	\$9,608.81	(\$3,201.09)	\$194.70	\$5,585.15	\$2,587.06	(\$3,889.50)	\$93,425.72
ANCILLARY SERVICES	\$3,616.33	(\$1,126.61)	(\$1,655.08)	(\$977.76)	(\$670.62)	(\$2,084.66)	(\$3,752.53)
TCC	(\$3,762.65)	\$120.82	\$333.27	\$103.86	\$263.40	\$1,405.74	\$1,151.95
	29	30	31				
ENERGY	(\$133,556.88)	(\$221,579.10)	(\$88,901.25)				
TRANSMISSION SERVICE	(\$3,400.66)	(\$3,536.48)	(\$3,417.50)				
UPLIFT	\$0.05	\$1.95	\$0.02				
RESIDUALS	\$143,884.35	\$228,324.85	\$93,345.00				
ANCILLARY SERVICES	(\$30,260.77)	(\$5,271.03)	(\$18,747.54)				
TCC	\$27,550.71	\$1,473.49	\$15,087.95				



SETTLEMENTS REPORT  
 July 2019 Settlement Adjustment  
 December 6, 2019

**Initial Settlement – Market Supply Analysis**

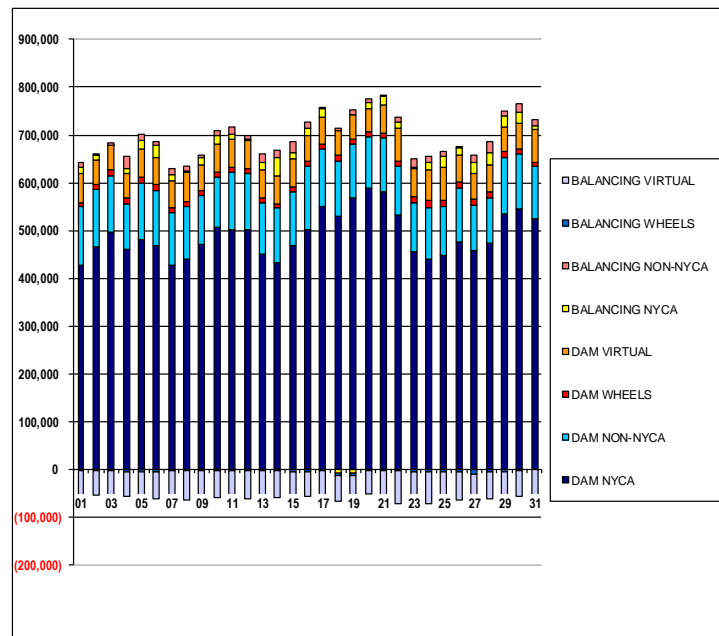
	MONDAY	TUESDAY	WEDNESDAY	THURSDAY	FRIDAY	SATURDAY	SUNDAY
	1	2	3	4	5	6	7
DAM NYCA	427,214	466,153	497,609	461,519	480,064	467,941	427,478
DAM NON-NYCA	122,098	120,447	117,736	94,435	120,111	115,942	109,002
DAM WHEELS	9,824	10,915	11,021	13,329	11,559	12,200	10,806
DAM VIRTUAL	59,443	51,011	51,331	51,018	59,631	56,596	56,451
BALANCING NYCA	13,129	8,958	72	8,909	16,052	25,570	11,668
BALANCING NON-NYCA	10,298	541	4,739	24,871	12,843	6,215	13,652
BALANCING WHEELS	(2,624)	(3,715)	(3,821)	(6,129)	(4,359)	(5,000)	(3,606)
BALANCING VIRTUAL	(59,443)	(51,011)	(51,331)	(51,018)	(59,631)	(56,596)	(56,451)
	8	9	10	11	12	13	14
DAM NYCA	440,579	469,723	507,463	502,650	500,900	449,868	432,649
DAM NON-NYCA	108,932	103,116	105,138	120,160	119,044	107,705	114,369
DAM WHEELS	10,918	9,991	10,160	10,478	10,038	9,655	9,458
DAM VIRTUAL	60,420	54,683	57,082	56,964	59,566	59,045	58,280
BALANCING NYCA	2,576	13,787	19,414	12,008	1,962	17,080	38,828
BALANCING NON-NYCA	12,147	6,588	9,926	14,817	5,870	15,785	13,498
BALANCING WHEELS	(3,718)	(2,791)	(2,960)	(4,113)	(2,838)	(2,445)	(2,258)
BALANCING VIRTUAL	(60,420)	(54,683)	(57,082)	(56,964)	(59,566)	(59,045)	(58,280)
	15	16	17	18	19	20	21
DAM NYCA	467,848	502,640	549,661	530,837	568,524	589,136	582,101
DAM NON-NYCA	112,319	131,266	120,251	115,171	111,213	107,662	111,722
DAM WHEELS	11,891	12,203	10,031	11,231	11,348	10,623	9,624
DAM VIRTUAL	58,381	51,754	58,299	52,550	52,013	48,110	58,464
BALANCING NYCA	12,023	17,135	17,697	(9,283)	(9,378)	12,818	16,650
BALANCING NON-NYCA	24,572	11,143	1,520	4,985	9,426	7,095	3,502
BALANCING WHEELS	(4,691)	(5,003)	(2,831)	(4,031)	(4,088)	(3,423)	(2,364)
BALANCING VIRTUAL	(58,381)	(51,754)	(58,299)	(52,550)	(52,013)	(48,110)	(58,464)
	22	23	24	25	26	27	28
DAM NYCA	532,258	455,086	439,086	447,398	477,146	459,119	473,077
DAM NON-NYCA	102,900	101,960	109,877	103,122	112,176	93,349	96,163
DAM WHEELS	10,053	13,069	13,827	13,454	11,566	12,441	12,060
DAM VIRTUAL	68,504	59,810	64,546	68,410	57,672	54,559	56,493
BALANCING NYCA	12,578	2,332	14,806	23,678	13,633	22,595	24,605
BALANCING NON-NYCA	11,626	18,638	13,789	8,974	445	14,595	22,672
BALANCING WHEELS	(2,853)	(5,869)	(6,627)	(6,254)	(5,941)	(10,941)	(4,860)
BALANCING VIRTUAL	(68,504)	(59,810)	(64,546)	(68,410)	(57,672)	(54,559)	(56,493)
	29	30	31				
DAM NYCA	534,352	546,038	524,810				
DAM NON-NYCA	118,835	113,486	108,903				
DAM WHEELS	11,918	11,018	8,276				
DAM VIRTUAL	50,755	52,855	68,609				
BALANCING NYCA	24,070	24,186	7,378				
BALANCING NON-NYCA	9,200	17,382	14,162				
BALANCING WHEELS	(4,718)	(3,818)	(1,076)				
BALANCING VIRTUAL	(50,755)	(52,855)	(68,609)				



SETTLEMENTS REPORT  
 July 2019 Settlement Adjustment  
 December 6, 2019

**4-Month Settlement Adjustment – Market Supply Analysis**

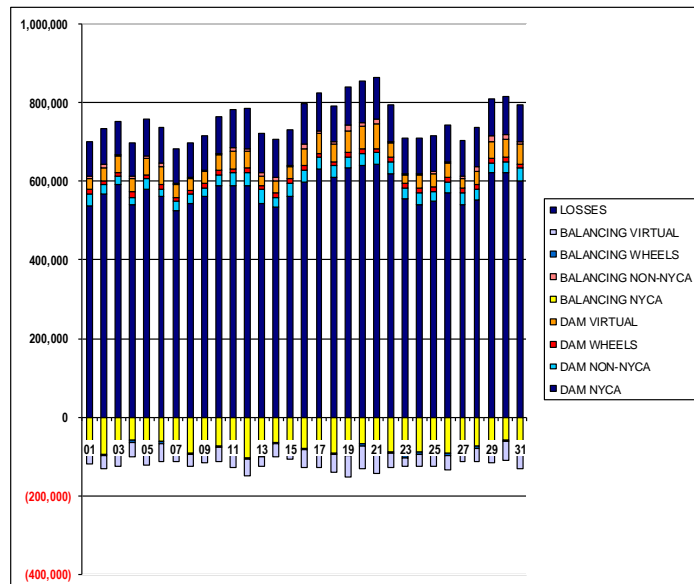
	MONDAY	TUESDAY	WEDNESDAY	THURSDAY	FRIDAY	SATURDAY	SUNDAY
	1	2	3	4	5	6	7
DAM NYCA	427,214	466,153	497,609	461,519	480,064	467,941	427,478
DAM NON-NYCA	122,098	120,447	117,736	94,435	120,111	115,942	109,002
DAM WHEELS	9,824	10,915	11,021	13,329	11,559	12,200	10,806
DAM VIRTUAL	59,443	51,011	51,331	51,018	59,631	56,596	56,451
BALANCING NYCA	13,449	9,215	277	9,289	16,462	25,965	11,961
BALANCING NON-NYCA	10,298	541	4,739	24,871	12,843	6,215	13,652
BALANCING WHEELS	(2,624)	(3,715)	(3,821)	(6,129)	(4,359)	(5,000)	(3,606)
BALANCING VIRTUAL	(59,443)	(51,011)	(51,331)	(51,018)	(59,631)	(56,596)	(56,451)
	8	9	10	11	12	13	14
DAM NYCA	440,579	469,723	507,463	502,650	500,900	449,868	432,649
DAM NON-NYCA	108,932	103,116	105,138	120,160	119,044	107,705	114,369
DAM WHEELS	10,918	9,991	10,160	10,478	10,038	9,655	9,458
DAM VIRTUAL	60,420	54,683	57,082	56,964	59,566	59,045	58,280
BALANCING NYCA	2,876	14,110	19,549	12,296	2,161	17,342	39,151
BALANCING NON-NYCA	12,147	6,588	9,926	14,817	5,870	15,785	13,498
BALANCING WHEELS	(3,718)	(2,791)	(2,960)	(4,113)	(2,838)	(2,445)	(2,258)
BALANCING VIRTUAL	(60,420)	(54,683)	(57,082)	(56,964)	(59,566)	(59,045)	(58,280)
	15	16	17	18	19	20	21
DAM NYCA	467,848	502,640	549,661	530,837	568,524	589,136	582,101
DAM NON-NYCA	112,319	131,266	120,251	115,171	111,213	107,662	111,722
DAM WHEELS	11,891	12,203	10,031	11,231	11,348	10,623	9,624
DAM VIRTUAL	58,381	51,754	58,299	52,550	52,013	48,110	58,464
BALANCING NYCA	12,059	17,351	17,708	(9,209)	(9,320)	13,008	17,659
BALANCING NON-NYCA	24,572	11,143	1,520	4,985	9,426	7,095	3,502
BALANCING WHEELS	(4,691)	(5,003)	(2,831)	(4,031)	(4,088)	(3,423)	(2,364)
BALANCING VIRTUAL	(58,381)	(51,754)	(58,299)	(52,550)	(52,013)	(48,110)	(58,464)
	22	23	24	25	26	27	28
DAM NYCA	532,258	455,086	439,086	447,398	477,146	459,119	473,077
DAM NON-NYCA	102,900	101,960	109,877	103,122	112,176	93,349	96,163
DAM WHEELS	10,053	13,069	13,827	13,454	11,566	12,441	12,060
DAM VIRTUAL	68,504	59,810	64,546	68,410	57,672	54,559	56,493
BALANCING NYCA	12,735	2,167	14,698	23,786	13,887	22,799	24,806
BALANCING NON-NYCA	11,626	18,638	13,789	8,974	445	14,595	22,672
BALANCING WHEELS	(2,853)	(5,869)	(6,627)	(6,254)	(5,941)	(10,941)	(4,880)
BALANCING VIRTUAL	(68,504)	(59,810)	(64,546)	(68,410)	(57,672)	(54,559)	(56,493)
	29	30	31				
DAM NYCA	534,352	546,038	524,810				
DAM NON-NYCA	118,835	113,486	108,903				
DAM WHEELS	11,918	11,018	8,276				
DAM VIRTUAL	50,755	52,855	68,609				
BALANCING NYCA	24,388	24,330	7,507				
BALANCING NON-NYCA	9,200	17,382	14,162				
BALANCING WHEELS	(4,718)	(3,818)	(1,076)				
BALANCING VIRTUAL	(50,755)	(52,855)	(68,609)				



**SETTLEMENTS REPORT**  
 July 2019 Settlement Adjustment  
 December 6, 2019

**Initial Settlement – Market Withdrawals Analysis**

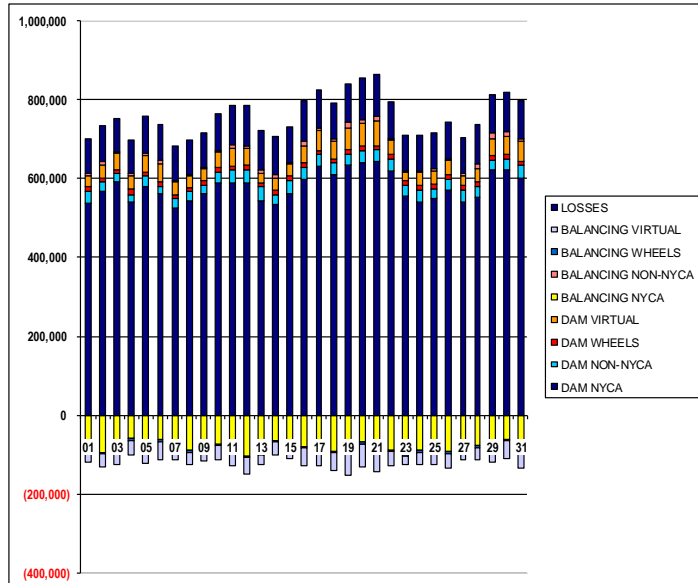
	MONDAY	TUESDAY	WEDNESDAY	THURSDAY	FRIDAY	SATURDAY	SUNDAY
	1	2	3	4	5	6	7
DAM NYCA	536,400	566,559	591,821	540,802	579,997	561,186	526,366
DAM NON-NYCA	32,385	24,435	20,833	18,348	25,715	20,120	22,418
DAM WHEELS	9,824	10,915	11,021	13,329	11,559	12,200	10,806
DAM VIRTUAL	28,148	33,933	40,466	35,630	40,816	45,316	31,724
BALANCING NYCA	(89,129)	(94,485)	(79,606)	(58,725)	(77,774)	(62,811)	(78,437)
BALANCING NON-NYCA	5,039	9,106	3,373	5,047	7,432	7,720	4,810
BALANCING WHEELS	(2,624)	(3,715)	(3,821)	(6,129)	(4,359)	(5,000)	(3,609)
BALANCING VIRTUAL	(28,148)	(33,933)	(40,466)	(35,630)	(40,816)	(45,316)	(31,724)
UFE/LOSSES	88,044	90,485	83,734	84,262	93,699	89,553	86,643
	8	9	10	11	12	13	14
DAM NYCA	543,455	562,524	587,830	590,234	588,960	544,331	534,282
DAM NON-NYCA	23,261	21,628	29,755	31,666	34,714	34,733	25,792
DAM WHEELS	10,918	9,991	10,160	10,478	10,038	9,655	9,458
DAM VIRTUAL	30,822	30,672	38,685	45,066	41,790	25,367	32,290
BALANCING NYCA	(90,454)	(81,478)	(72,659)	(78,910)	(105,210)	(98,064)	(65,780)
BALANCING NON-NYCA	2,967	4,206	3,731	8,073	7,999	8,288	9,550
BALANCING WHEELS	(3,718)	(2,791)	(2,960)	(4,113)	(2,838)	(2,445)	(2,258)
BALANCING VIRTUAL	(30,822)	(30,672)	(38,685)	(45,066)	(41,790)	(25,367)	(32,290)
UFE/LOSSES	85,004	86,334	93,284	98,572	101,312	101,150	95,499
	15	16	17	18	19	20	21
DAM NYCA	561,997	597,348	630,364	611,283	635,767	640,904	644,706
DAM NON-NYCA	32,296	30,844	30,905	27,791	26,792	30,243	28,381
DAM WHEELS	11,891	12,203	10,031	11,231	11,348	10,623	9,624
DAM VIRTUAL	31,580	43,531	50,734	45,288	54,708	57,791	62,446
BALANCING NYCA	(72,139)	(78,414)	(74,501)	(92,210)	(93,498)	(69,088)	(78,493)
BALANCING NON-NYCA	1,826	10,476	5,106	3,879	15,156	10,378	14,311
BALANCING WHEELS	(4,691)	(5,003)	(2,831)	(4,031)	(4,088)	(3,423)	(2,364)
BALANCING VIRTUAL	(31,580)	(43,531)	(50,734)	(45,288)	(54,708)	(57,791)	(62,446)
UFE/LOSSES	92,782	101,930	97,255	90,967	95,568	104,274	105,070
	22	23	24	25	26	27	28
DAM NYCA	620,105	555,745	539,583	549,231	569,991	539,862	552,572
DAM NON-NYCA	30,680	27,530	30,661	24,056	28,746	31,031	27,297
DAM WHEELS	10,053	13,069	13,827	13,454	11,566	12,441	12,060
DAM VIRTUAL	37,830	20,877	30,766	33,909	35,612	23,593	32,679
BALANCING NYCA	(88,549)	(97,289)	(87,882)	(85,250)	(92,153)	(78,856)	(74,852)
BALANCING NON-NYCA	2,978	2,573	3,753	5,979	4,474	6,503	13,317
BALANCING WHEELS	(2,853)	(5,869)	(6,627)	(6,254)	(5,941)	(10,941)	(4,860)
BALANCING VIRTUAL	(37,830)	(20,877)	(30,766)	(33,909)	(35,612)	(23,593)	(32,679)
UFE/LOSSES	94,148	89,457	91,442	89,157	92,342	91,119	98,184
	29	30	31				
DAM NYCA	623,220	622,864	600,190				
DAM NON-NYCA	24,079	28,031	33,555				
DAM WHEELS	11,918	11,018	8,276				
DAM VIRTUAL	42,215	46,025	54,064				
BALANCING NYCA	(69,579)	(59,150)	(77,409)				
BALANCING NON-NYCA	13,474	11,014	5,645				
BALANCING WHEELS	(4,718)	(3,818)	(1,076)				
BALANCING VIRTUAL	(42,215)	(46,025)	(54,064)				
UFE/LOSSES	95,263	98,333	93,272				



**SETTLEMENTS REPORT**  
 July 2019 Settlement Adjustment  
 December 6, 2019

**4-Month Settlement Adjustment – Market Withdrawals Analysis**

	MONDAY	TUESDAY	WEDNESDAY	THURSDAY	FRIDAY	SATURDAY	SUNDAY
	1	2	3	4	5	6	7
DAM NYCA	536,400	566,559	591,821	540,802	579,997	561,186	526,366
DAM NON-NYCA	32,385	24,435	20,833	18,348	25,715	20,120	22,418
DAM WHEELS	9,824	10,915	11,021	13,329	11,559	12,200	10,806
DAM VIRTUAL	28,148	33,933	40,466	35,630	40,816	45,316	31,724
BALANCING NYCA	(88,868)	(94,324)	(79,523)	(58,418)	(77,389)	(62,565)	(78,335)
BALANCING NON-NYCA	5,039	9,106	3,373	5,047	7,432	7,720	4,810
BALANCING WHEELS	(2,624)	(3,715)	(3,821)	(6,129)	(4,359)	(5,000)	(3,606)
BALANCING VIRTUAL	(28,148)	(33,933)	(40,466)	(35,630)	(40,816)	(45,316)	(31,724)
UFE/LOSSES	88,102	90,580	83,856	84,335	93,724	89,603	86,834
	8	9	10	11	12	13	14
DAM NYCA	543,455	562,524	587,830	590,234	588,960	544,331	534,282
DAM NON-NYCA	23,261	21,628	29,755	31,666	34,714	34,733	25,792
DAM WHEELS	10,918	9,991	10,160	10,478	10,038	9,655	9,458
DAM VIRTUAL	30,822	30,672	38,685	45,066	41,790	25,367	32,290
BALANCING NYCA	(90,266)	(81,230)	(72,673)	(78,765)	(105,107)	(97,850)	(65,527)
BALANCING NON-NYCA	2,967	4,206	3,731	8,073	7,999	8,288	9,550
BALANCING WHEELS	(3,718)	(2,791)	(2,960)	(4,113)	(2,838)	(2,445)	(2,258)
BALANCING VIRTUAL	(30,822)	(30,672)	(38,685)	(45,066)	(41,790)	(25,367)	(32,290)
UFE/LOSSES	85,116	86,409	93,433	98,715	101,408	101,197	95,569
	15	16	17	18	19	20	21
DAM NYCA	561,997	597,348	630,364	611,283	635,767	640,904	644,706
DAM NON-NYCA	32,296	30,844	30,905	27,791	26,792	30,243	28,381
DAM WHEELS	11,891	12,203	10,031	11,231	11,348	10,623	9,624
DAM VIRTUAL	31,580	43,531	50,734	45,288	54,708	57,791	62,446
BALANCING NYCA	(72,256)	(78,254)	(74,525)	(92,220)	(93,528)	(68,899)	(77,674)
BALANCING NON-NYCA	1,826	10,476	5,106	3,879	15,156	10,378	14,311
BALANCING WHEELS	(4,691)	(5,003)	(2,831)	(4,031)	(4,088)	(3,423)	(2,364)
BALANCING VIRTUAL	(31,580)	(43,531)	(50,734)	(45,288)	(54,708)	(57,791)	(62,446)
UFE/LOSSES	92,944	101,987	97,290	91,051	95,656	104,275	105,280
	22	23	24	25	26	27	28
DAM NYCA	620,105	555,745	539,583	549,231	569,991	539,862	552,572
DAM NON-NYCA	30,680	27,530	30,661	24,056	28,746	31,031	27,297
DAM WHEELS	10,053	13,069	13,827	13,454	11,566	12,441	12,060
DAM VIRTUAL	37,830	20,877	30,766	33,909	35,612	23,593	32,679
BALANCING NYCA	(88,406)	(97,484)	(88,162)	(85,268)	(92,079)	(78,636)	(76,525)
BALANCING NON-NYCA	2,978	2,573	3,753	5,979	4,474	6,503	13,317
BALANCING WHEELS	(2,853)	(5,869)	(6,627)	(6,254)	(5,941)	(10,941)	(4,860)
BALANCING VIRTUAL	(37,830)	(20,877)	(30,766)	(33,909)	(35,612)	(23,593)	(32,679)
UFE/LOSSES	94,162	89,488	91,615	89,282	92,522	91,102	100,058
	29	30	31				
DAM NYCA	623,220	622,864	600,190				
DAM NON-NYCA	24,079	28,031	33,555				
DAM WHEELS	11,918	11,018	8,276				
DAM VIRTUAL	42,215	46,025	54,064				
BALANCING NYCA	(71,994)	(61,663)	(79,808)				
BALANCING NON-NYCA	13,474	11,014	5,645				
BALANCING WHEELS	(4,718)	(3,818)	(1,076)				
BALANCING VIRTUAL	(42,215)	(46,025)	(54,064)				
UFE/LOSSES	97,996	100,990	95,801				

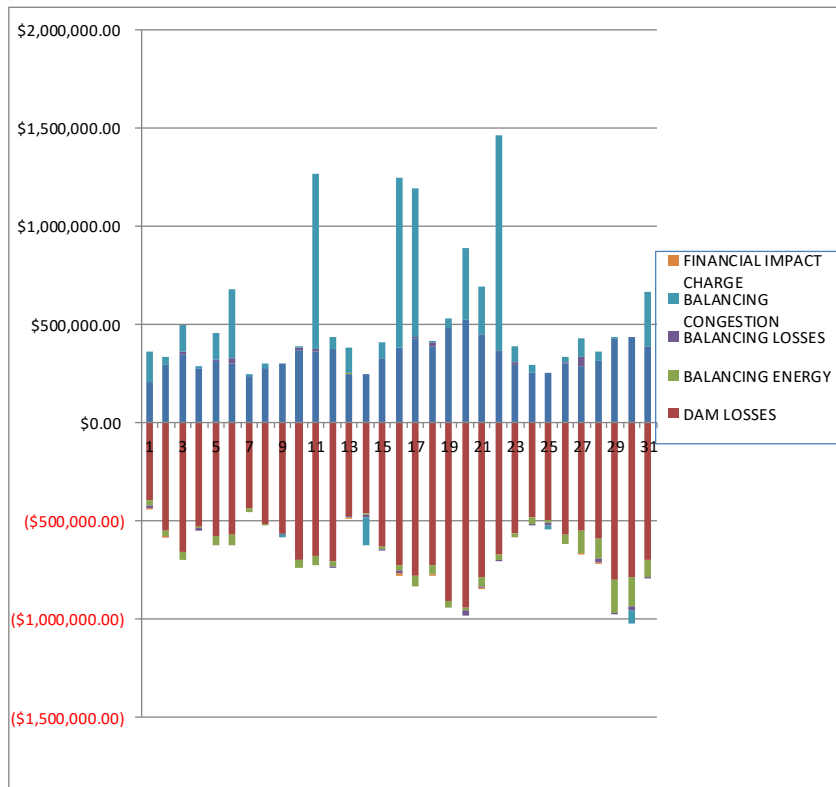




SETTLEMENTS REPORT  
 July 2019 Settlement Adjustment  
 December 6, 2019

**Initial Settlement – Market Residuals Analysis**

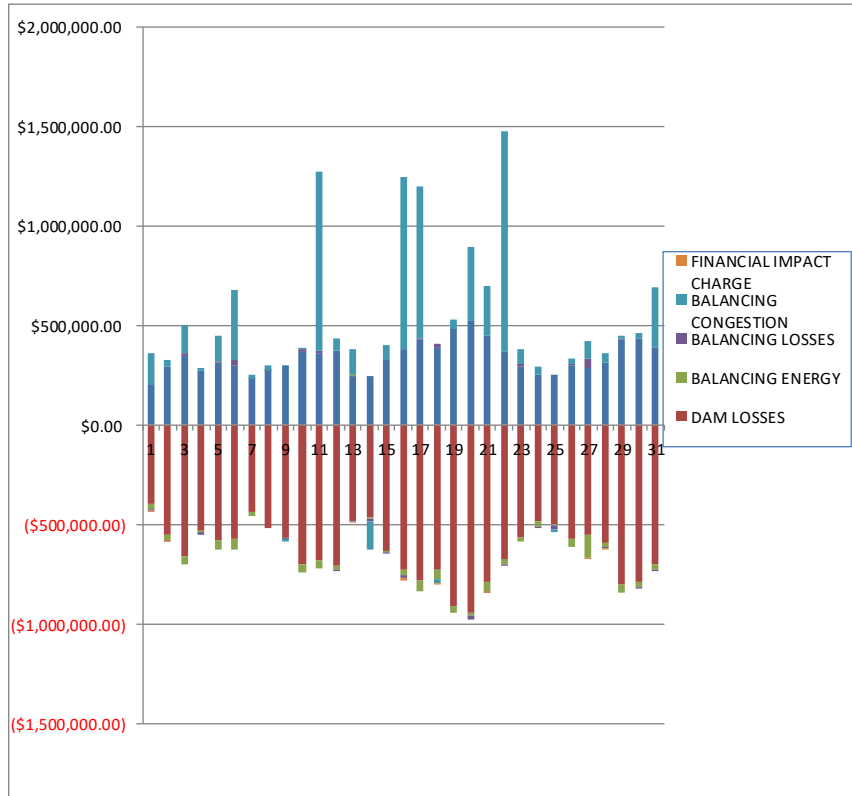
	MONDAY	TUESDAY	WEDNESDAY	THURSDAY	FRIDAY	SATURDAY	SUNDAY
	1	2	3	4	5	6	7
DAM ENERGY	\$206,195.50	\$290,811.37	\$350,029.70	\$275,769.13	\$311,560.33	\$299,846.16	\$231,610.23
DAM LOSSES	(\$396,608.87)	(\$550,105.99)	(\$656,703.20)	(\$532,838.10)	(\$581,319.50)	(\$568,994.40)	(\$438,279.38)
BALANCING ENERGY	(\$26,939.60)	(\$26,357.14)	(\$46,271.68)	(\$5,115.05)	(\$47,689.94)	(\$58,552.95)	(\$21,872.68)
BALANCING LOSSES	(\$10,233.75)	(\$1,812.56)	\$9,565.17	(\$15,029.57)	\$6,861.90	\$24,557.52	\$3,287.84
BALANCING CONGESTION	\$154,956.81	\$43,261.68	\$138,638.21	\$9,434.85	\$134,283.04	\$352,709.47	\$13,139.95
FINANCIAL IMPACT CHARGE	(\$983.52)	(\$90.62)	\$0.00	\$0.00	\$0.00	\$0.00	\$0.00
	8	9	10	11	12	13	14
DAM ENERGY	\$273,564.28	\$299,155.89	\$370,381.49	\$358,986.77	\$375,945.63	\$249,262.89	\$243,848.03
DAM LOSSES	(\$517,032.09)	(\$564,175.50)	(\$699,102.81)	(\$678,350.36)	(\$705,083.45)	(\$479,834.51)	(\$465,759.81)
BALANCING ENERGY	(\$1,338.61)	(\$3,424.68)	(\$43,946.03)	(\$47,259.37)	(\$27,042.95)	\$4,462.45	(\$6,328.35)
BALANCING LOSSES	\$1,698.09	(\$6,548.37)	\$8,697.41	\$13,720.07	(\$4,522.55)	(\$3,043.97)	(\$14,757.04)
BALANCING CONGESTION	\$23,208.64	(\$9,308.52)	\$10,941.15	\$897,387.88	\$58,979.21	\$128,619.72	(\$137,979.46)
FINANCIAL IMPACT CHARGE	\$0.00	\$0.00	\$0.00	\$0.00	\$0.00	(\$51.17)	\$0.00
	15	16	17	18	19	20	21
DAM ENERGY	\$327,306.92	\$383,045.67	\$430,660.32	\$389,041.50	\$482,129.24	\$524,951.48	\$449,822.96
DAM LOSSES	(\$629,637.15)	(\$727,452.94)	(\$779,746.58)	(\$725,334.31)	(\$912,257.96)	(\$944,922.25)	(\$787,116.49)
BALANCING ENERGY	(\$16,258.80)	(\$23,838.29)	(\$56,581.27)	(\$49,103.93)	(\$32,458.25)	(\$14,794.15)	(\$48,535.45)
BALANCING LOSSES	(\$234.73)	(\$14,457.22)	\$5,821.24	\$21,073.77	\$979.51	(\$21,856.49)	(\$6,561.58)
BALANCING CONGESTION	\$81,804.48	\$864,601.40	\$755,572.60	\$4,708.82	\$45,696.02	\$366,472.37	\$243,933.44
FINANCIAL IMPACT CHARGE	\$0.00	(\$17,851.85)	\$0.00	(\$692.90)	\$0.00	\$0.00	(\$555.99)
	22	23	24	25	26	27	28
DAM ENERGY	\$368,704.90	\$292,731.33	\$249,528.98	\$249,513.87	\$296,971.13	\$286,020.45	\$315,456.98
DAM LOSSES	(\$676,061.92)	(\$564,412.31)	(\$483,305.07)	(\$499,304.84)	(\$572,896.36)	(\$549,339.62)	(\$590,767.07)
BALANCING ENERGY	(\$22,498.29)	(\$22,590.70)	(\$31,580.29)	(\$9,502.37)	(\$45,360.16)	(\$117,627.15)	(\$103,634.54)
BALANCING LOSSES	(\$1,925.14)	\$15,452.68	(\$897.28)	(\$14,814.77)	\$7,419.84	\$47,123.01	(\$19,690.71)
BALANCING CONGESTION	\$1,095,727.15	\$80,461.33	\$45,799.88	(\$23,520.73)	\$29,555.39	\$92,731.50	\$44,518.32
FINANCIAL IMPACT CHARGE	\$0.00	\$0.00	\$0.00	\$0.00	\$0.00	(\$10.86)	(\$49.28)
	29	30	31				
DAM ENERGY	\$430,186.19	\$432,120.07	\$386,034.04				
DAM LOSSES	(\$800,659.82)	(\$791,489.99)	(\$698,687.84)				
BALANCING ENERGY	(\$169,358.60)	(\$146,656.43)	(\$87,880.16)				
BALANCING LOSSES	(\$5,891.58)	(\$17,940.20)	(\$7,364.13)				
BALANCING CONGESTION	\$6,372.44	(\$66,409.83)	\$276,752.83				
FINANCIAL IMPACT CHARGE	\$0.00	\$0.00	\$0.00				



**SETTLEMENTS REPORT**  
**July 2019 Settlement Adjustment**  
**December 6, 2019**

**4-Month Settlement Adjustment – Market Residuals Analysis**

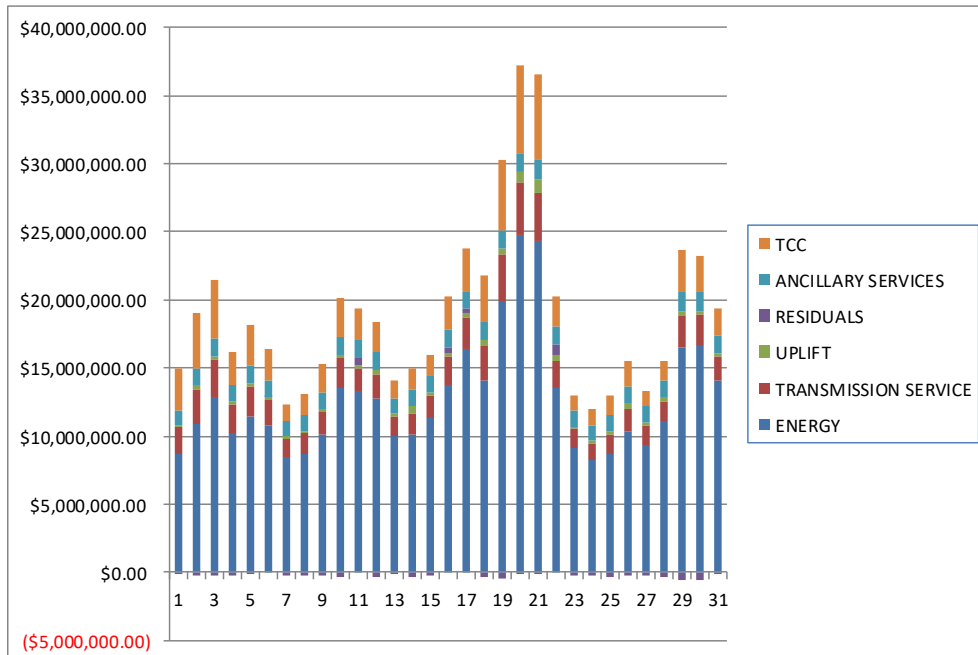
	MONDAY	TUESDAY	WEDNESDAY	THURSDAY	FRIDAY	SATURDAY	SUNDAY
	1	2	3	4	5	6	7
DAM ENERGY	\$206,195.50	\$290,811.37	\$350,029.70	\$275,769.13	\$311,560.33	\$299,846.15	\$231,610.23
DAM LOSSES	(\$396,608.87)	(\$550,105.99)	(\$656,703.20)	(\$532,838.10)	(\$581,319.50)	(\$568,994.40)	(\$438,279.38)
BALANCING ENERGY	(\$26,368.12)	(\$25,579.11)	(\$43,887.62)	(\$4,057.71)	(\$47,347.05)	(\$57,803.91)	(\$17,621.59)
BALANCING LOSSES	(\$10,286.68)	(\$1,874.17)	\$9,898.15	(\$14,918.73)	\$6,796.10	\$24,563.93	\$3,363.82
BALANCING CONGESTION	\$153,293.65	\$39,592.36	\$142,758.18	\$9,083.27	\$133,052.91	\$354,848.71	\$15,061.66
FINANCIAL IMPACT CHARGE	(\$983.56)	(\$90.66)	\$0.00	\$0.00	\$0.00	\$0.00	\$0.00
	8	9	10	11	12	13	14
DAM ENERGY	\$273,564.28	\$299,155.88	\$370,381.50	\$358,986.77	\$375,945.63	\$249,262.89	\$243,848.02
DAM LOSSES	(\$517,032.09)	(\$564,175.49)	(\$699,102.81)	(\$678,350.36)	(\$705,083.45)	(\$479,834.51)	(\$465,759.81)
BALANCING ENERGY	\$836.97	(\$2,019.30)	(\$40,893.98)	(\$44,380.60)	(\$25,219.93)	\$4,493.22	(\$4,870.49)
BALANCING LOSSES	\$1,758.79	(\$6,450.70)	\$8,877.06	\$13,742.50	(\$4,247.33)	(\$2,985.66)	(\$14,655.56)
BALANCING CONGESTION	\$23,088.55	(\$10,799.27)	\$5,644.21	\$897,783.56	\$58,640.28	\$126,495.10	(\$140,605.85)
FINANCIAL IMPACT CHARGE	\$0.00	\$0.00	\$0.00	\$0.00	\$0.00	(\$51.09)	\$0.00
	15	16	17	18	19	20	21
DAM ENERGY	\$327,306.92	\$383,045.67	\$430,660.32	\$389,041.51	\$482,129.24	\$524,951.48	\$449,822.96
DAM LOSSES	(\$629,637.16)	(\$727,452.93)	(\$779,746.58)	(\$725,334.31)	(\$912,257.96)	(\$944,922.25)	(\$787,116.49)
BALANCING ENERGY	(\$13,271.39)	(\$24,040.85)	(\$55,624.75)	(\$47,857.81)	(\$31,229.55)	(\$14,313.65)	(\$45,429.02)
BALANCING LOSSES	(\$17.73)	(\$14,282.23)	\$6,130.52	\$21,387.63	\$1,199.61	(\$21,446.83)	(\$5,951.99)
BALANCING CONGESTION	\$76,984.46	\$861,542.58	\$765,045.24	(\$24,044.95)	\$45,048.03	\$371,414.58	\$246,047.73
FINANCIAL IMPACT CHARGE	\$0.00	(\$17,851.92)	\$0.00	(\$692.83)	\$0.00	\$0.00	(\$555.86)
	22	23	24	25	26	27	28
DAM ENERGY	\$368,704.90	\$292,731.33	\$249,528.98	\$249,513.87	\$296,971.12	\$286,020.45	\$315,456.99
DAM LOSSES	(\$676,061.91)	(\$564,412.31)	(\$483,305.06)	(\$499,304.83)	(\$572,896.36)	(\$549,339.62)	(\$590,767.06)
BALANCING ENERGY	(\$22,086.30)	(\$21,486.10)	(\$28,008.16)	(\$7,689.36)	(\$42,303.54)	(\$116,897.32)	(\$20,315.61)
BALANCING LOSSES	(\$1,641.65)	\$15,673.18	(\$628.64)	(\$14,599.70)	\$7,394.05	\$47,156.05	(\$9,794.28)
BALANCING CONGESTION	\$1,104,640.47	\$75,935.14	\$42,153.80	(\$19,963.67)	\$29,111.63	\$88,079.12	\$44,728.60
FINANCIAL IMPACT CHARGE	\$0.00	\$0.00	\$0.00	\$0.00	\$0.00	(\$10.85)	(\$49.22)
	29	30	31				
DAM ENERGY	\$430,186.19	\$432,120.07	\$386,034.04				
DAM LOSSES	(\$800,659.82)	(\$791,490.00)	(\$698,687.84)				
BALANCING ENERGY	(\$43,434.20)	(\$27,168.38)	(\$29,979.31)				
BALANCING LOSSES	\$8,413.87	(\$2,621.23)	(\$964.46)				
BALANCING CONGESTION	\$10,026.94	\$27,108.01	\$305,797.31				
FINANCIAL IMPACT CHARGE	\$0.00	\$0.00	\$0.00				



**SETTLEMENTS REPORT**  
 July 2019 Settlement Adjustment  
 December 6, 2019

**Initial Settlement – Market Costs Analysis**

	MONDAY	TUESDAY	WEDNESDAY	THURSDAY	FRIDAY	SATURDAY	SUNDAY
	1	2	3	4	5	6	7
ENERGY	\$8,655,223.38	\$10,849,663.98	\$12,861,914.24	\$10,230,116.43	\$11,494,187.55	\$10,785,363.14	\$8,413,849.64
TRANSMISSION SERVICE	\$2,028,621.94	\$2,568,164.94	\$2,732,799.38	\$2,049,244.54	\$2,181,641.70	\$1,823,945.54	\$1,394,267.52
UPLIFT	\$107,346.63	\$296,397.62	\$296,459.31	\$232,295.27	\$193,132.58	\$241,081.20	\$175,112.90
RESIDUALS	(\$73,613.43)	(\$244,293.26)	(\$204,741.80)	(\$267,778.74)	(\$176,304.17)	\$49,565.80	(\$212,114.04)
ANCILLARY SERVICES	\$1,118,358.44	\$1,211,664.38	\$1,293,814.35	\$1,196,446.23	\$1,289,154.73	\$1,208,133.40	\$1,113,750.33
TCC	\$3,061,199.54	\$4,163,046.13	\$4,295,689.83	\$2,469,301.06	\$2,964,586.69	\$2,255,624.89	\$1,254,961.89
	8	9	10	11	12	13	14
ENERGY	\$8,709,021.67	\$10,092,719.75	\$13,548,820.06	\$13,265,173.02	\$12,733,305.56	\$10,008,688.55	\$10,157,020.34
TRANSMISSION SERVICE	\$1,539,875.53	\$1,698,836.84	\$2,229,770.89	\$1,735,029.16	\$1,827,578.94	\$1,398,534.26	\$1,544,589.17
UPLIFT	\$90,645.47	\$217,886.76	\$158,786.49	\$156,136.68	\$312,145.42	\$228,259.14	\$511,490.71
RESIDUALS	(\$219,899.69)	(\$284,301.18)	(\$353,028.79)	\$544,484.99	(\$301,724.11)	(\$100,584.59)	(\$380,976.63)
ANCILLARY SERVICES	\$1,165,522.11	\$1,216,036.57	\$1,294,799.47	\$1,317,712.78	\$1,261,629.75	\$1,141,551.80	\$1,178,562.72
TCC	\$1,632,828.63	\$2,079,822.92	\$2,863,936.66	\$2,340,097.29	\$2,277,989.48	\$1,259,429.78	\$1,595,484.51
	15	16	17	18	19	20	21
ENERGY	\$11,342,934.11	\$13,800,053.62	\$16,449,069.76	\$14,120,834.50	\$19,912,696.53	\$24,815,930.57	\$24,346,554.34
TRANSMISSION SERVICE	\$1,662,640.82	\$2,080,162.42	\$2,236,067.91	\$2,547,792.22	\$3,390,833.31	\$3,813,890.74	\$3,543,077.47
UPLIFT	\$191,591.83	\$219,133.01	\$344,566.85	\$398,382.29	\$427,007.32	\$747,802.74	\$997,202.76
RESIDUALS	(\$237,019.28)	\$464,046.77	\$355,726.31	(\$360,307.05)	(\$415,911.44)	(\$90,149.04)	(\$149,013.11)
ANCILLARY SERVICES	\$1,238,177.75	\$1,302,053.84	\$1,234,008.43	\$1,270,668.91	\$1,384,429.19	\$1,377,170.59	\$1,394,548.86
TCC	\$1,562,146.67	\$2,377,735.86	\$3,107,994.58	\$3,494,874.48	\$5,216,168.82	\$6,506,895.40	\$6,255,646.96
	22	23	24	25	26	27	28
ENERGY	\$13,572,787.79	\$9,142,225.74	\$8,236,173.74	\$8,731,344.01	\$10,368,016.46	\$9,399,774.35	\$11,056,828.46
TRANSMISSION SERVICE	\$1,990,860.64	\$1,364,552.43	\$1,254,492.75	\$1,424,531.35	\$1,665,468.49	\$1,358,944.30	\$1,509,517.08
UPLIFT	\$439,950.45	\$185,265.90	\$133,832.15	\$217,506.50	\$373,820.22	\$261,335.63	\$347,975.35
RESIDUALS	\$763,946.70	(\$198,357.67)	(\$220,453.78)	(\$297,628.84)	(\$284,310.16)	(\$241,102.67)	(\$354,166.30)
ANCILLARY SERVICES	\$1,232,720.93	\$1,171,471.19	\$1,145,045.22	\$1,175,473.22	\$1,204,267.20	\$1,177,390.75	\$1,215,452.76
TCC	\$2,271,060.37	\$1,143,803.74	\$1,173,426.20	\$1,432,232.13	\$1,859,503.46	\$1,167,415.07	\$1,431,591.10
	29	30	31				
ENERGY	\$16,499,757.31	\$16,629,202.29	\$14,031,263.34				
TRANSMISSION SERVICE	\$2,377,344.90	\$2,268,261.07	\$1,783,344.97				
UPLIFT	\$279,037.05	\$277,985.20	\$249,088.34				
RESIDUALS	(\$539,351.37)	(\$590,376.38)	(\$131,145.26)				
ANCILLARY SERVICES	\$1,417,184.66	\$1,390,557.53	\$1,328,633.83				
TCC	\$3,062,875.45	\$2,686,614.98	\$1,948,147.70				



**SETTLEMENTS REPORT**  
 July 2019 Settlement Adjustment  
 December 6, 2019

**4-Month Settlement Adjustment – Market Costs Analysis**

	MONDAY	TUESDAY	WEDNESDAY	THURSDAY	FRIDAY	SATURDAY	SUNDAY
	1	2	3	4	5	6	7
ENERGY	\$8,661,439.83	\$10,857,154.32	\$12,861,111.30	\$10,239,230.97	\$11,508,036.95	\$10,792,469.69	\$8,412,429.97
TRANSMISSION SERVICE	\$2,028,158.51	\$2,567,642.99	\$2,732,170.40	\$2,048,734.27	\$2,181,338.98	\$1,823,409.18	\$1,393,523.28
UPLIFT	\$114,270.02	\$301,787.07	\$301,719.24	\$237,557.25	\$200,462.56	\$245,165.96	\$174,612.38
RESIDUALS	(\$74,758.08)	(\$247,246.20)	(\$197,904.79)	(\$266,962.14)	(\$177,257.21)	\$52,460.48	(\$205,865.26)
ANCILLARY SERVICES	\$1,116,181.90	\$1,199,738.90	\$1,289,531.63	\$1,194,584.24	\$1,264,745.16	\$1,205,528.51	\$1,137,417.28
TCC	\$3,063,026.76	\$4,174,558.31	\$4,299,611.23	\$2,470,607.67	\$2,988,126.76	\$2,257,733.20	\$1,231,132.90
	8	9	10	11	12	13	14
ENERGY	\$8,713,425.82	\$10,099,692.98	\$13,555,225.98	\$13,269,846.68	\$12,736,011.83	\$10,016,515.37	\$10,167,377.94
TRANSMISSION SERVICE	\$1,539,200.22	\$1,698,242.50	\$2,229,061.10	\$1,734,491.47	\$1,826,936.65	\$1,397,814.39	\$1,543,998.26
UPLIFT	\$90,628.83	\$217,887.48	\$159,134.50	\$156,058.52	\$311,829.27	\$228,602.83	\$510,646.01
RESIDUALS	(\$217,783.50)	(\$284,288.88)	(\$355,094.02)	\$547,781.87	(\$299,964.80)	(\$102,620.05)	(\$382,043.69)
ANCILLARY SERVICES	\$1,162,433.53	\$1,214,159.31	\$1,290,072.56	\$1,312,594.18	\$1,256,855.59	\$1,170,750.51	\$1,196,592.39
TCC	\$1,635,540.71	\$2,081,193.11	\$2,868,605.07	\$2,345,442.90	\$2,282,678.72	\$1,229,650.45	\$1,577,594.53
	15	16	17	18	19	20	21
ENERGY	\$11,343,385.43	\$13,819,141.83	\$16,440,074.71	\$14,142,541.21	\$19,912,903.74	\$24,815,002.91	\$24,367,245.44
TRANSMISSION SERVICE	\$1,661,518.46	\$2,079,274.75	\$2,235,112.74	\$2,546,720.98	\$3,390,049.44	\$3,813,619.66	\$3,543,428.85
UPLIFT	\$191,464.07	\$257,806.85	\$344,812.46	\$398,357.22	\$434,427.32	\$753,972.25	\$1,023,381.35
RESIDUALS	(\$238,634.90)	\$460,960.32	\$366,464.75	(\$387,300.76)	(\$415,110.63)	(\$84,316.67)	(\$143,182.67)
ANCILLARY SERVICES	\$1,237,340.27	\$1,298,788.75	\$1,248,947.21	\$1,269,590.44	\$1,338,764.05	\$1,372,551.57	\$1,409,305.75
TCC	\$1,562,842.74	\$2,380,235.15	\$3,092,124.58	\$3,495,454.29	\$5,261,469.72	\$6,511,286.94	\$6,241,513.85
	22	23	24	25	26	27	28
ENERGY	\$13,571,570.39	\$9,140,761.22	\$8,230,761.84	\$8,732,774.63	\$10,371,817.77	\$9,410,204.50	\$10,969,151.76
TRANSMISSION SERVICE	\$1,990,192.50	\$1,363,276.10	\$1,253,173.62	\$1,423,602.41	\$1,664,712.87	\$1,358,423.58	\$1,506,968.74
UPLIFT	\$439,950.44	\$185,272.26	\$133,323.72	\$217,506.28	\$373,822.73	\$261,342.42	\$349,565.47
RESIDUALS	\$773,555.51	(\$201,558.76)	(\$220,259.08)	(\$292,043.69)	(\$281,723.10)	(\$244,992.17)	(\$260,740.58)
ANCILLARY SERVICES	\$1,236,337.26	\$1,170,344.58	\$1,143,390.14	\$1,174,495.46	\$1,203,596.58	\$1,175,306.09	\$1,211,700.23
TCC	\$2,267,297.72	\$1,143,924.56	\$1,173,759.47	\$1,432,335.99	\$1,859,766.86	\$1,168,820.81	\$1,432,743.05
	29	30	31				
ENERGY	\$16,366,200.43	\$16,407,623.19	\$13,942,362.09				
TRANSMISSION SERVICE	\$2,373,944.24	\$2,264,724.59	\$1,779,927.47				
UPLIFT	\$279,037.10	\$277,987.15	\$249,088.36				
RESIDUALS	(\$395,467.02)	(\$362,051.53)	(\$37,800.26)				
ANCILLARY SERVICES	\$1,386,923.89	\$1,385,286.50	\$1,309,886.29				
TCC	\$3,090,426.16	\$2,688,088.47	\$1,963,235.65				

